

TERMINATION OF AN AXIS

By

Shantanu Kirtikar

Thesis submitted to the Faculty of the
Virginia Polytechnic Institute and State University
in partial fulfillment of the requirements for the degree of

Master of Architecture

Approved

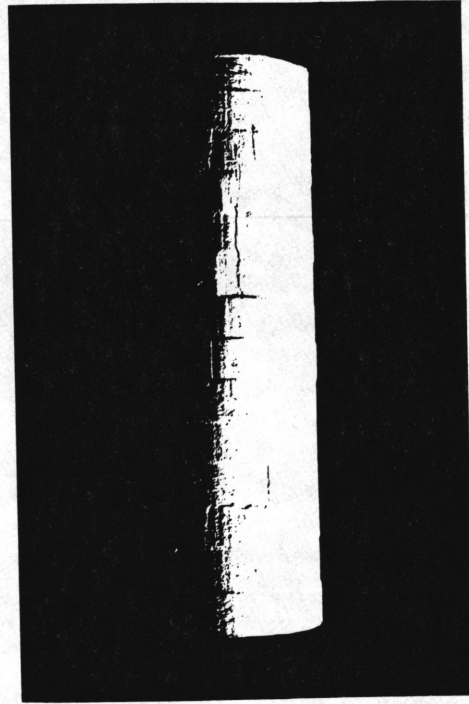
J. Scott Poole.

Deana Dunay, Chairperson

William U. Galloway

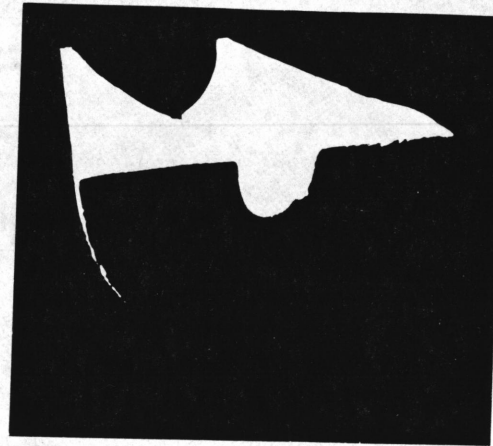
August 1992.
Blacksburg, Virginia.

ABSTRACT



'Architecture does not exist, only the spirit of architecture exists
What has presence is a work of architecture
which should be made in a way that is worthy
of an offering to architecture.'
Louis Kahn.

ACKNOWLEDGEMENTS



To
Family,
Friends,
Guides,

too many to name, who made this endeavor possible.

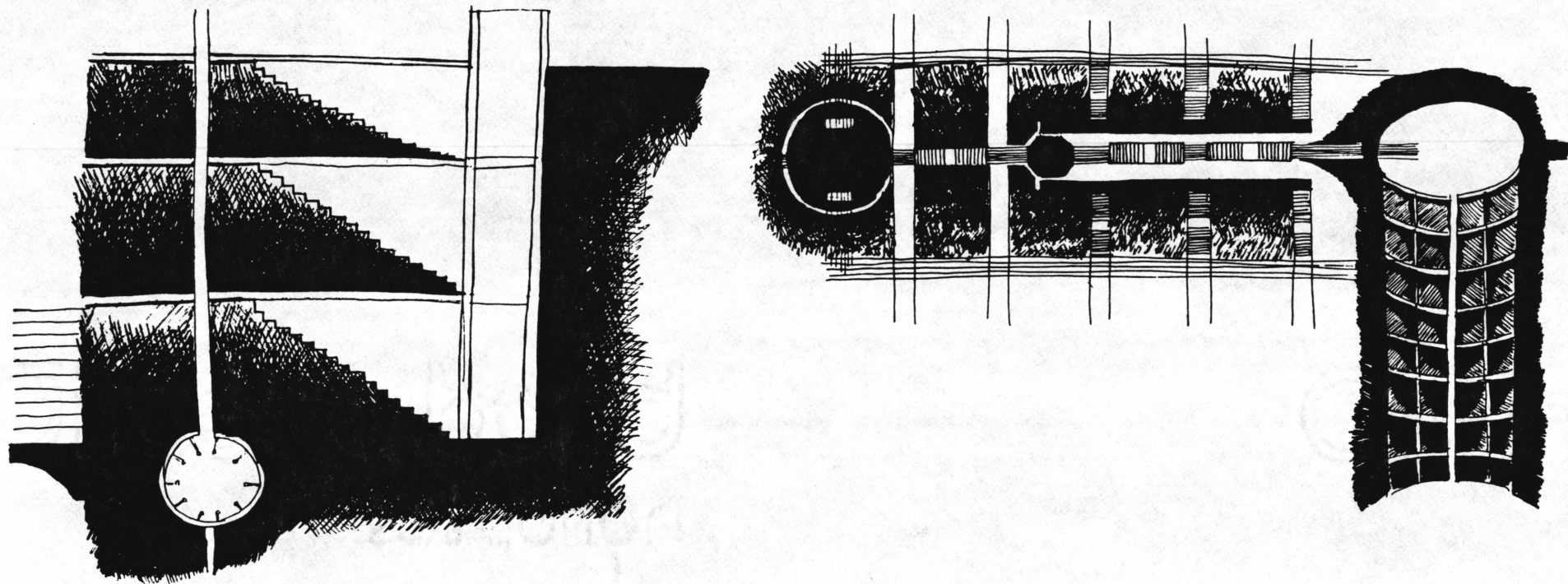
thanks

TABLE OF CONTENTS

Title	i
Abstract	ii
Acknowledgements	iii
Table of contents	iv
The inspiration	1
The manifestation	3
Bibliography	18
Vita	19



THE INSPIRATION

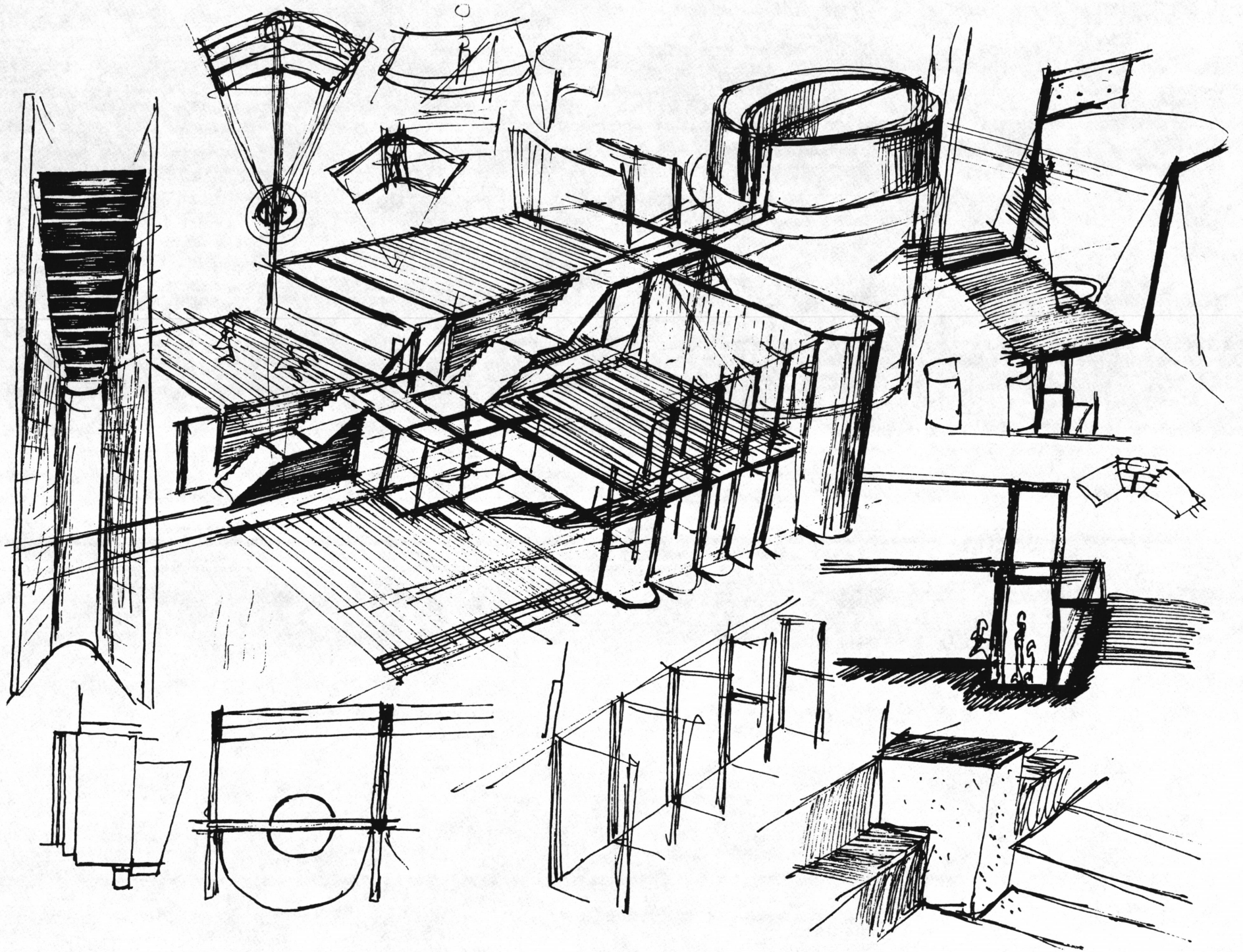


In a hot arid landscape the value of water can not be overstated. But stop for a minute and imagine the landscape. Its hot, the wind is dry and warm, sucking the moisture out of your being. Above, the sky is a pale blue, faded by the intense light of the sun. The light beats against your skin, slowly burning it, burning your eyes. Against that intense heat and light, your being seeks respite, a cool refuge of shade and icy cold water.

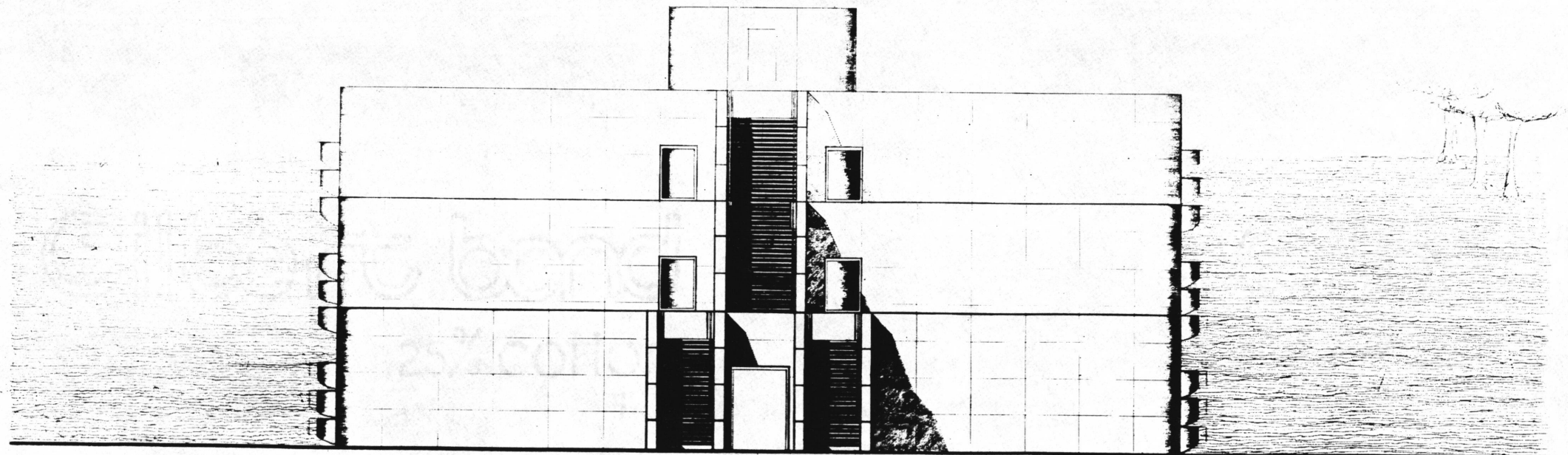
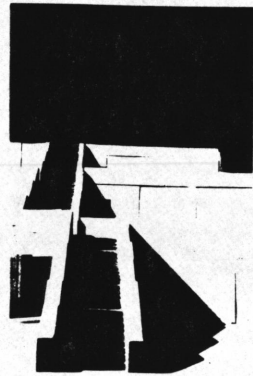
The Stepped Well at Adalaj, India.

A subterranean structure that forces the earth apart to create a series of rooms, stepping down into the earth, down to icy cold waters.

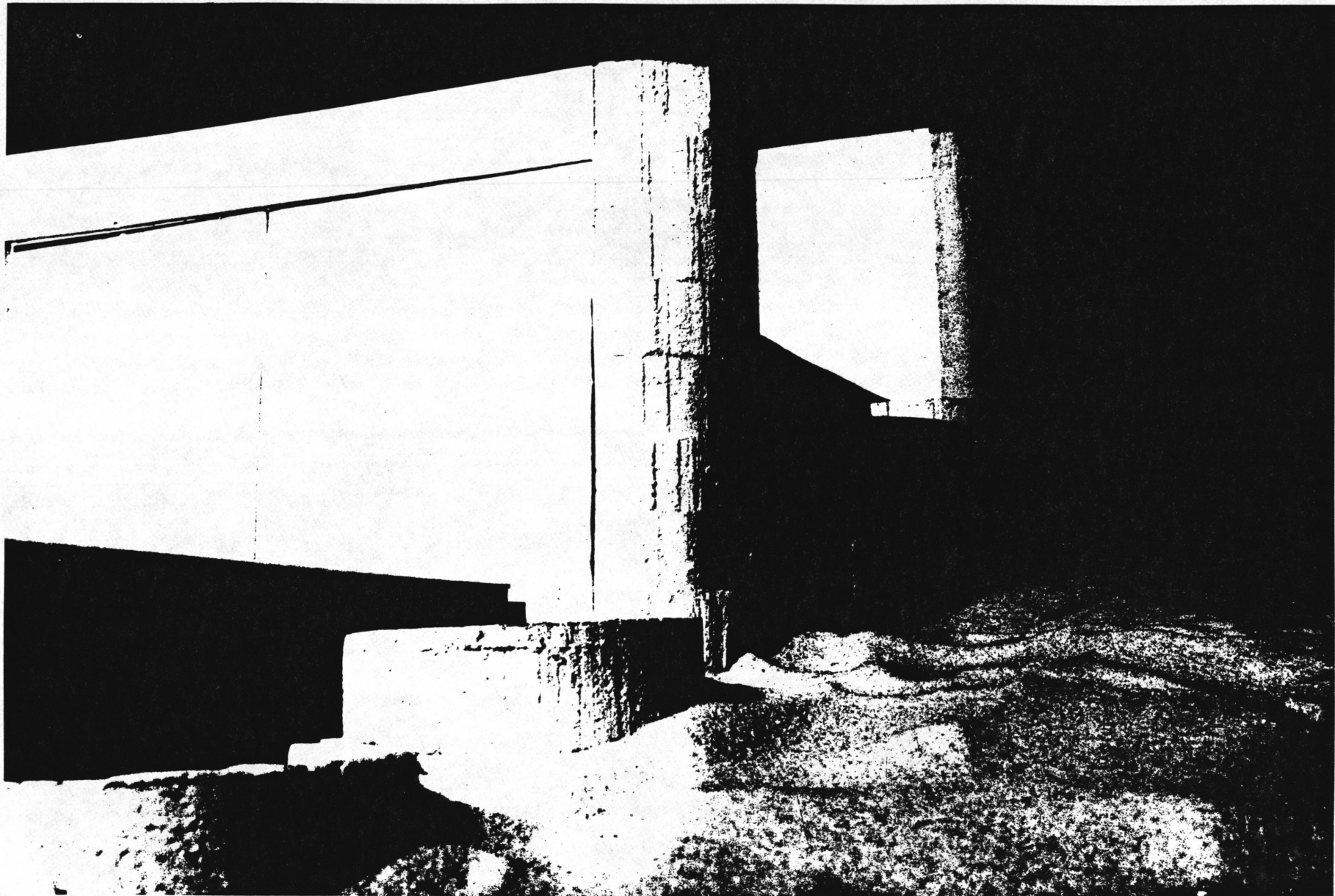
A structure that softens the light and prepares it for the human eye.



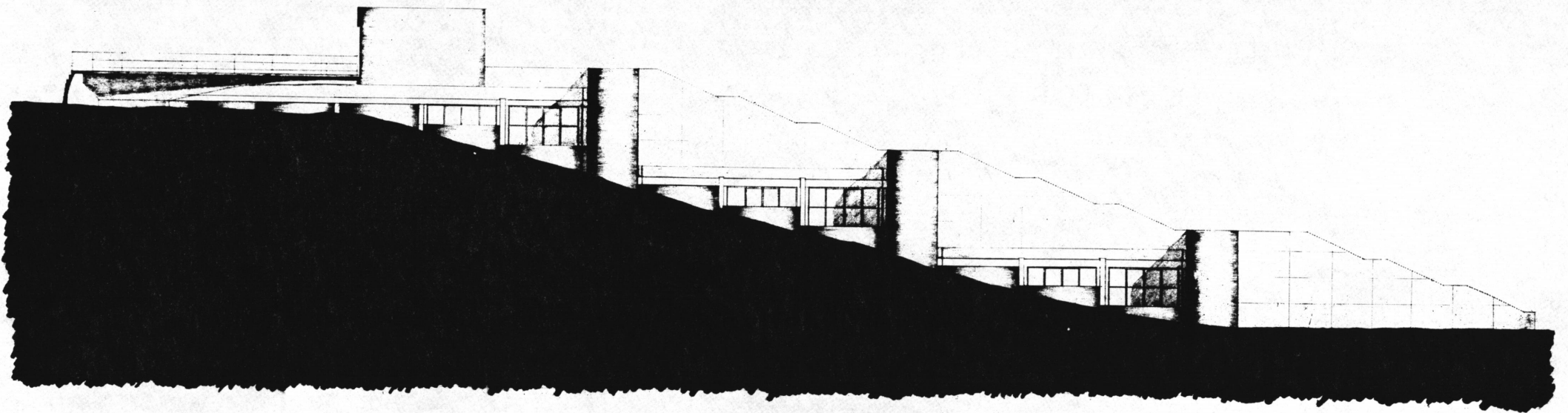
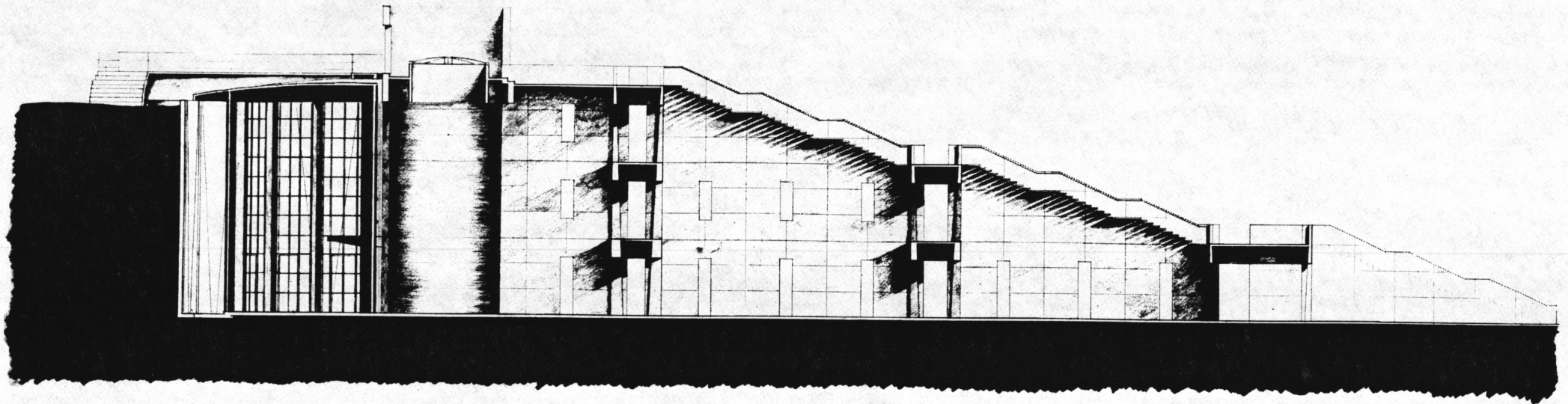
THE MANIFESTATION



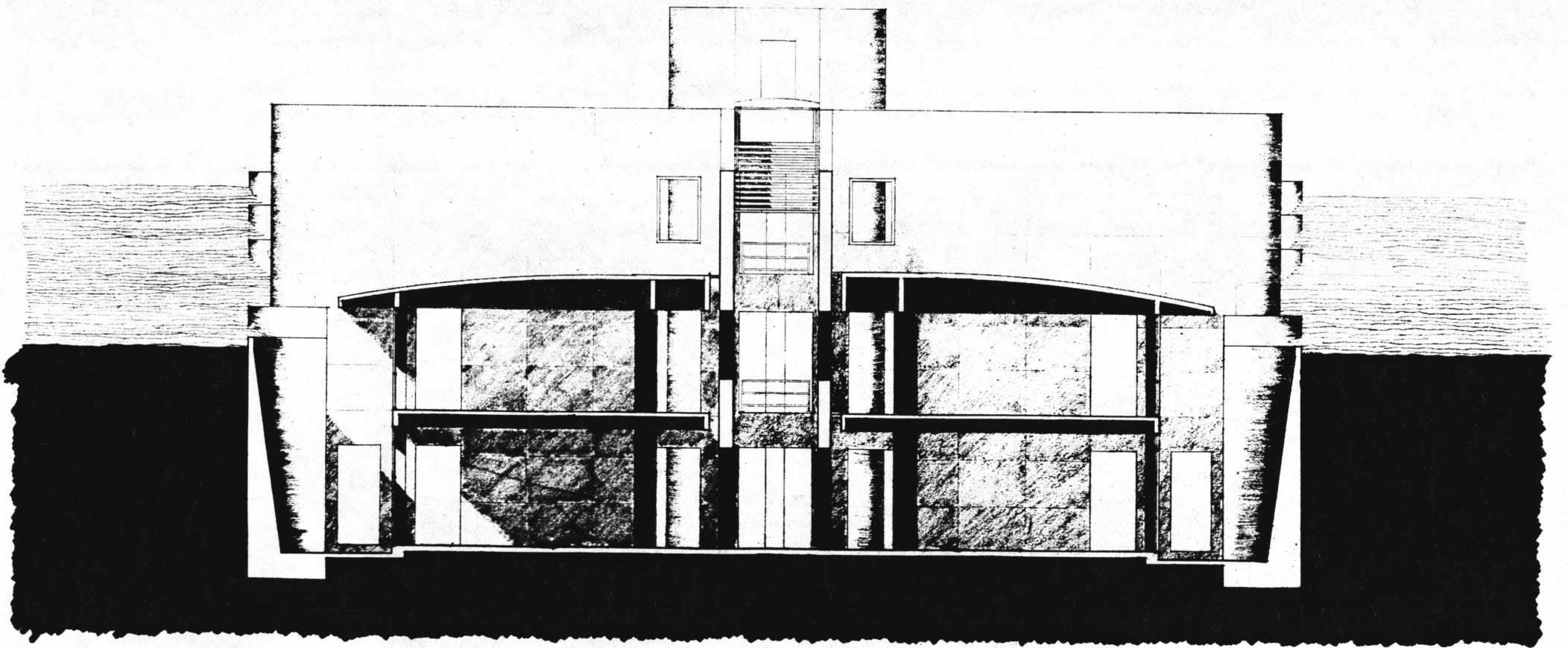
The structure is designed as the termination of an Axis



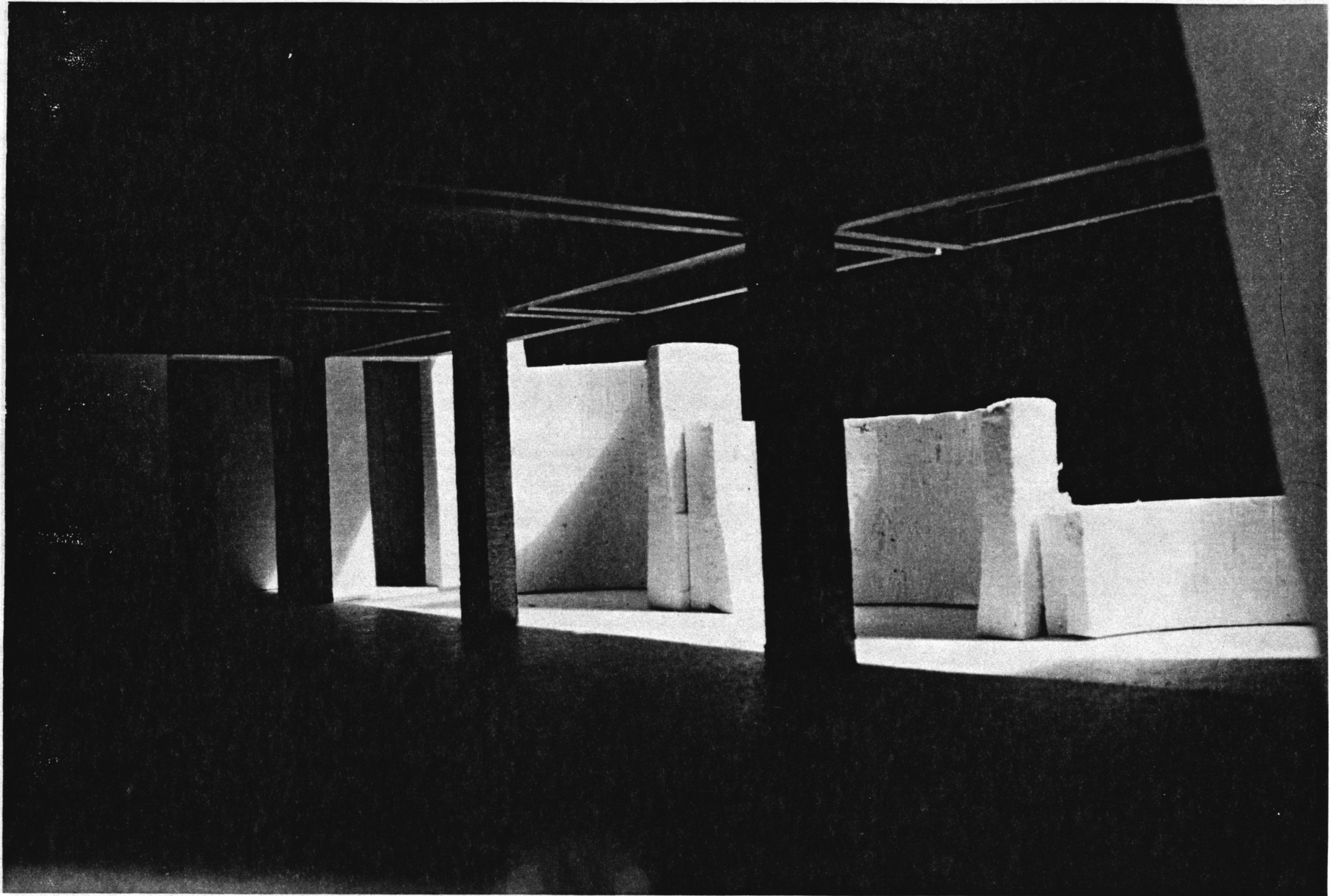
It is built into the side of a hill.....



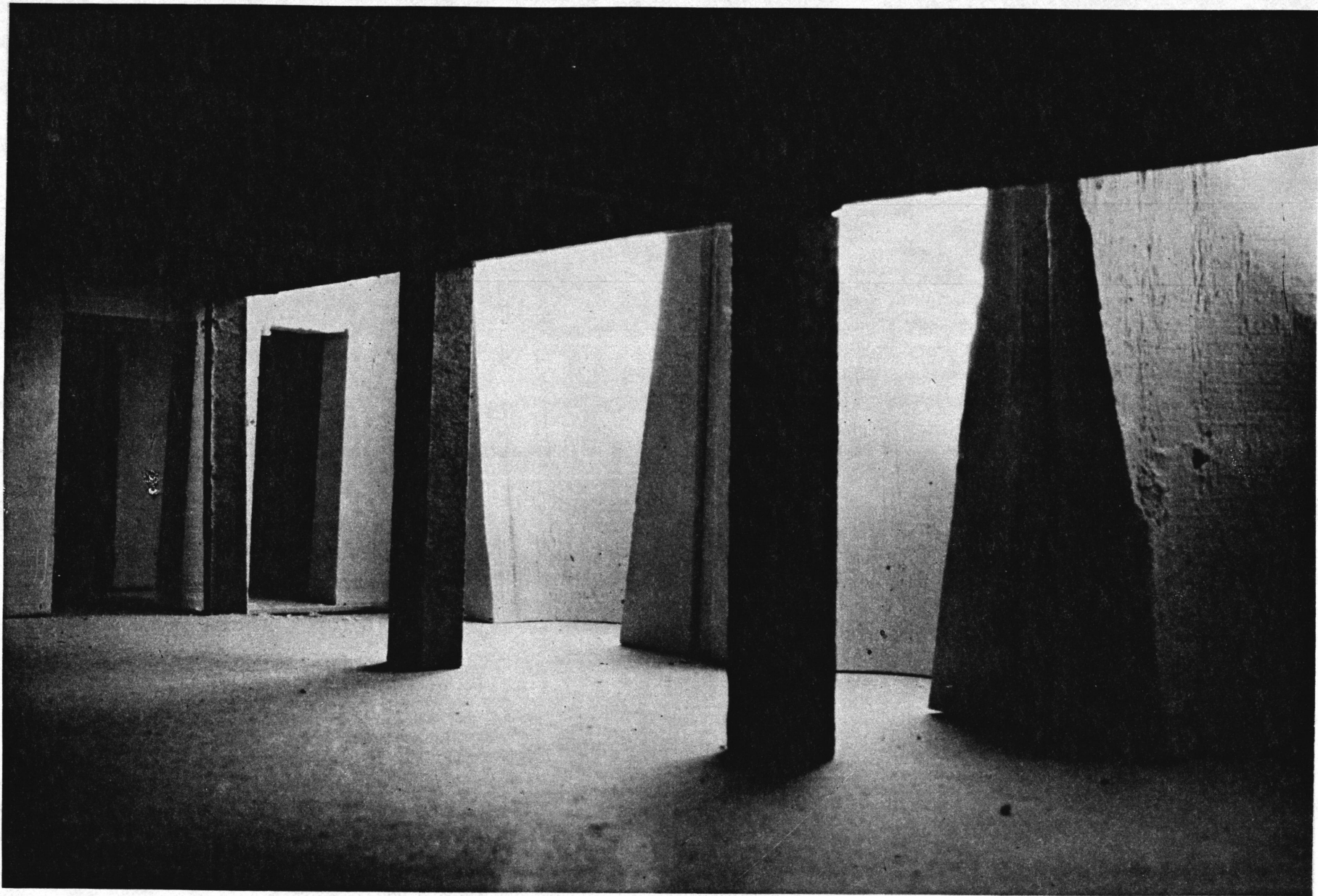
.....to set up a measure against which the mass of the earth can be experienced



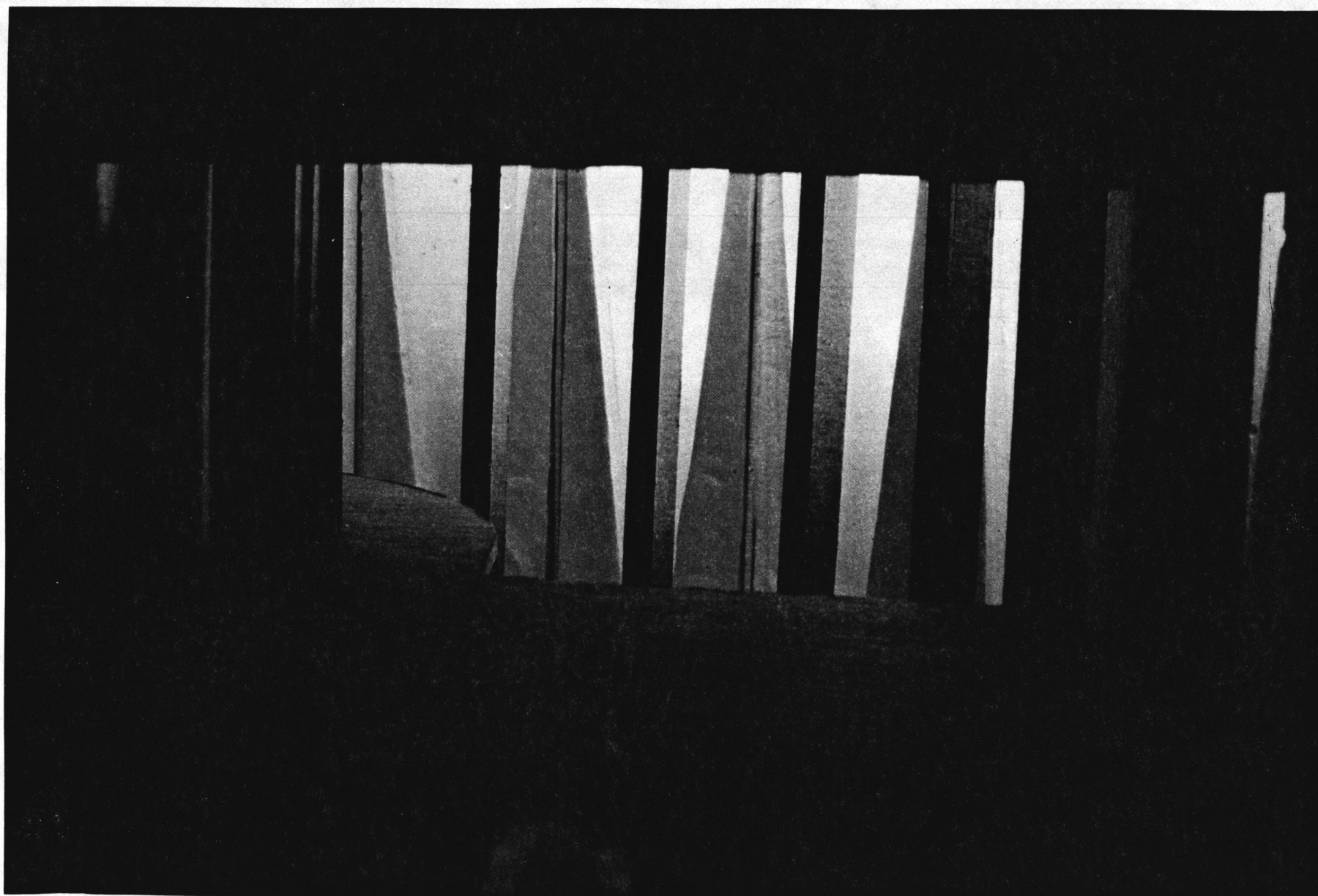
The earth is held back by a series of concrete elements creating a wall.



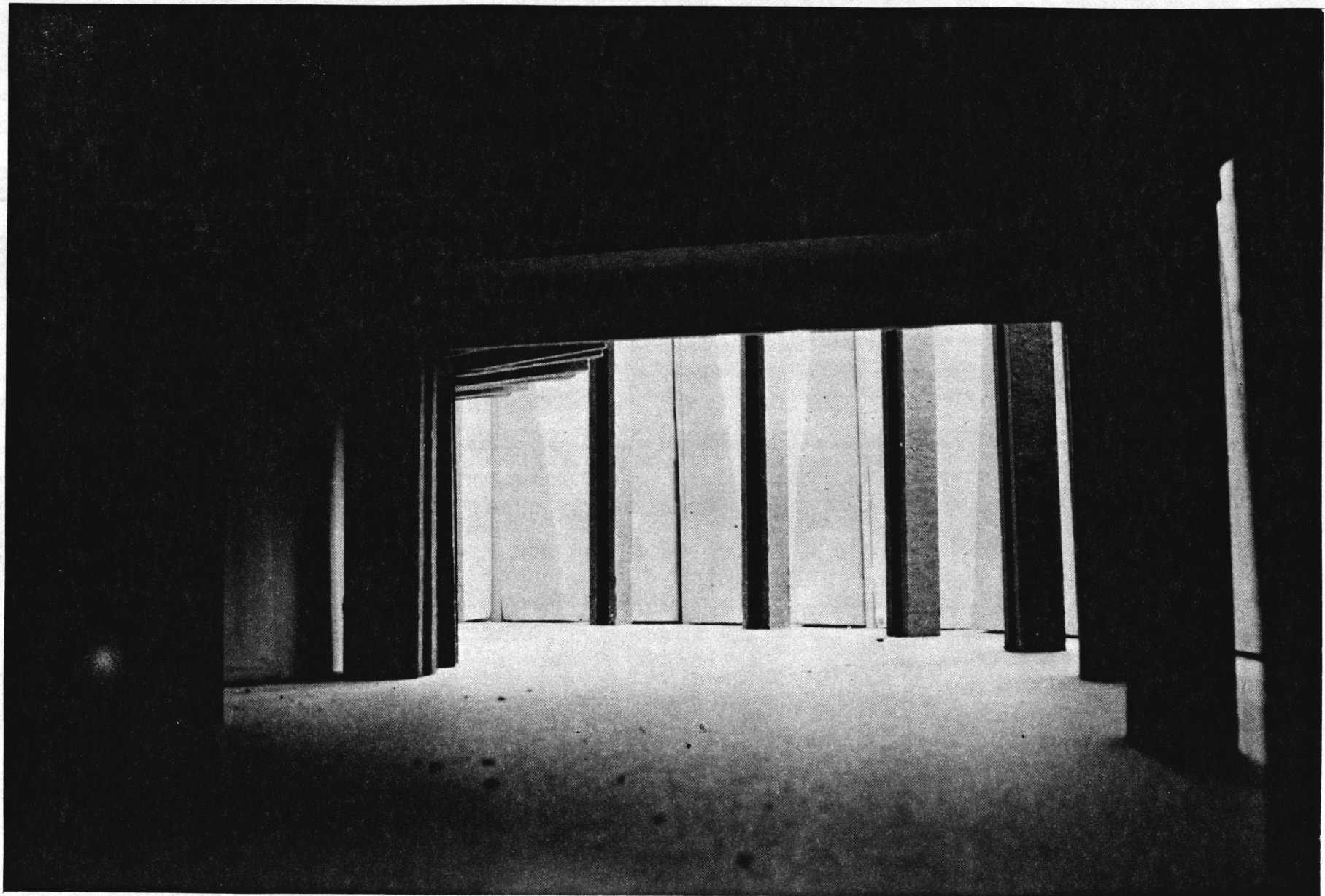
These elements, and thus the wall, alter as one moves deeper into the hill



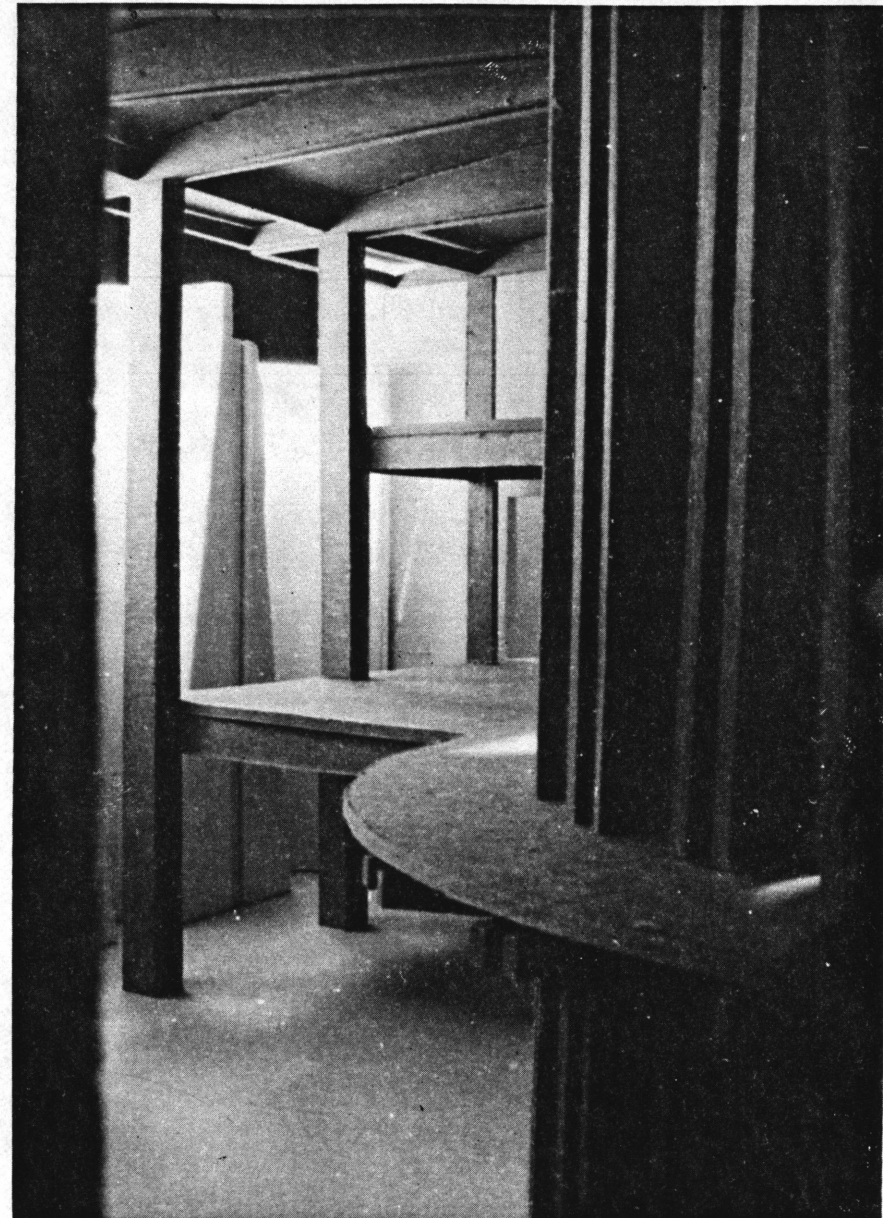
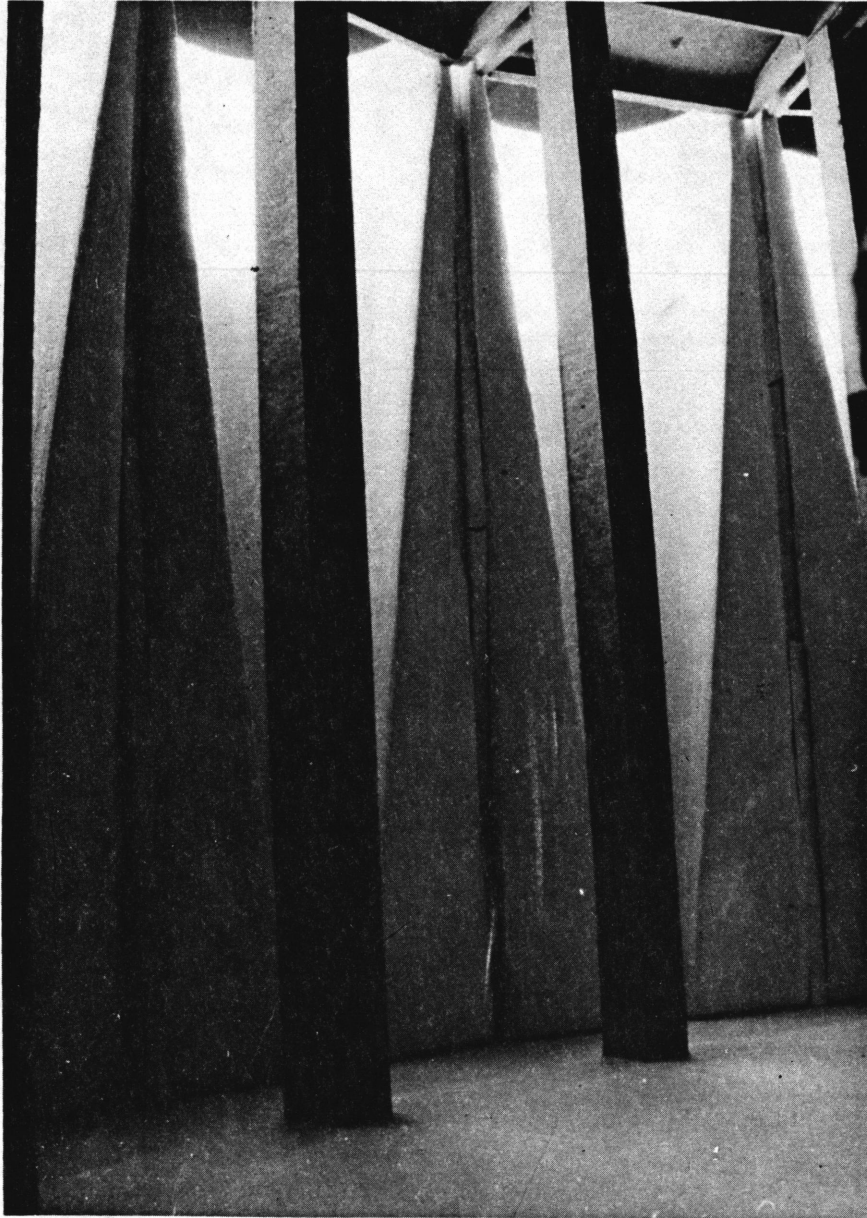
Thus providing the additional effort required to hold back the increasing mass of earth



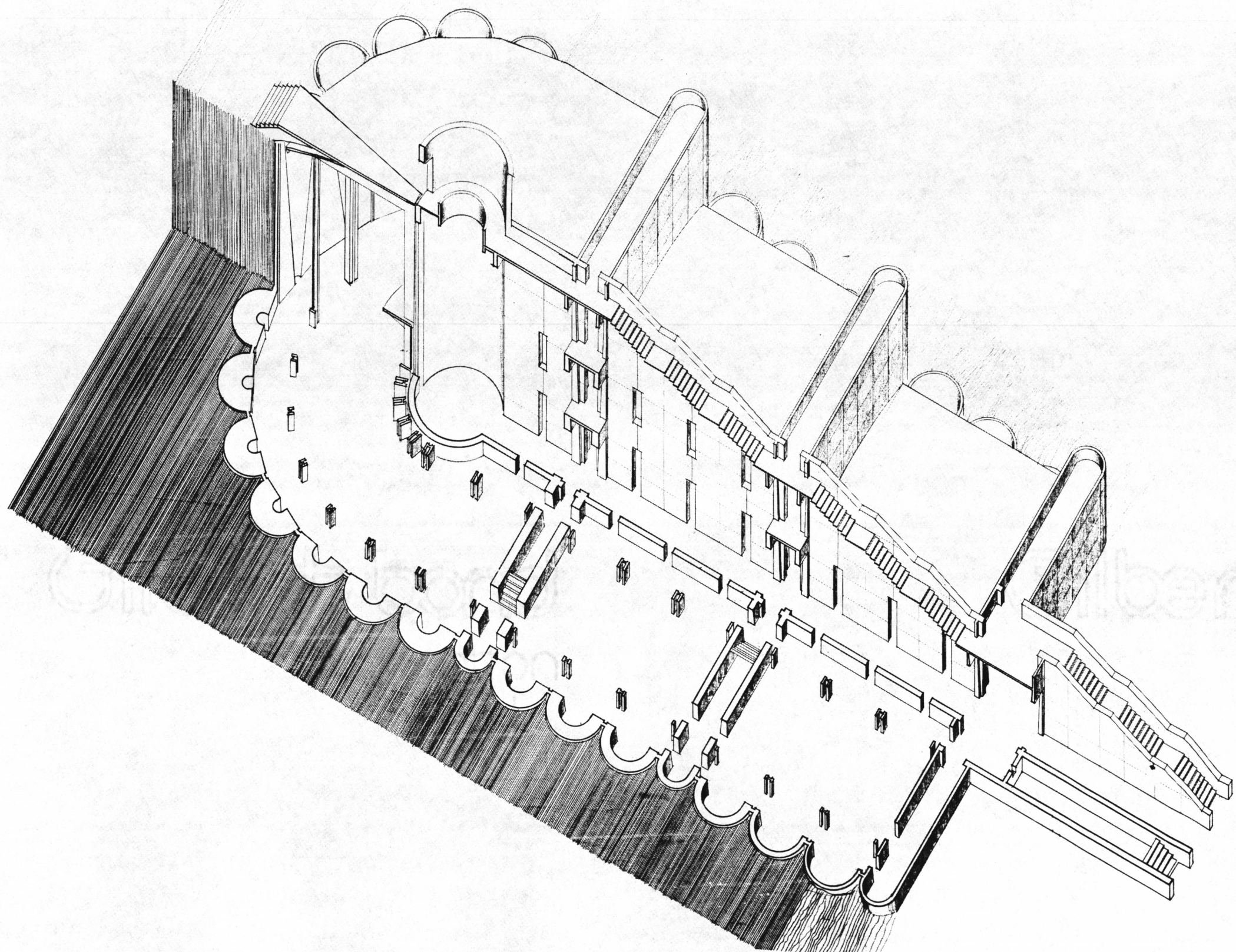
The elements, due to their form, reduce the light...



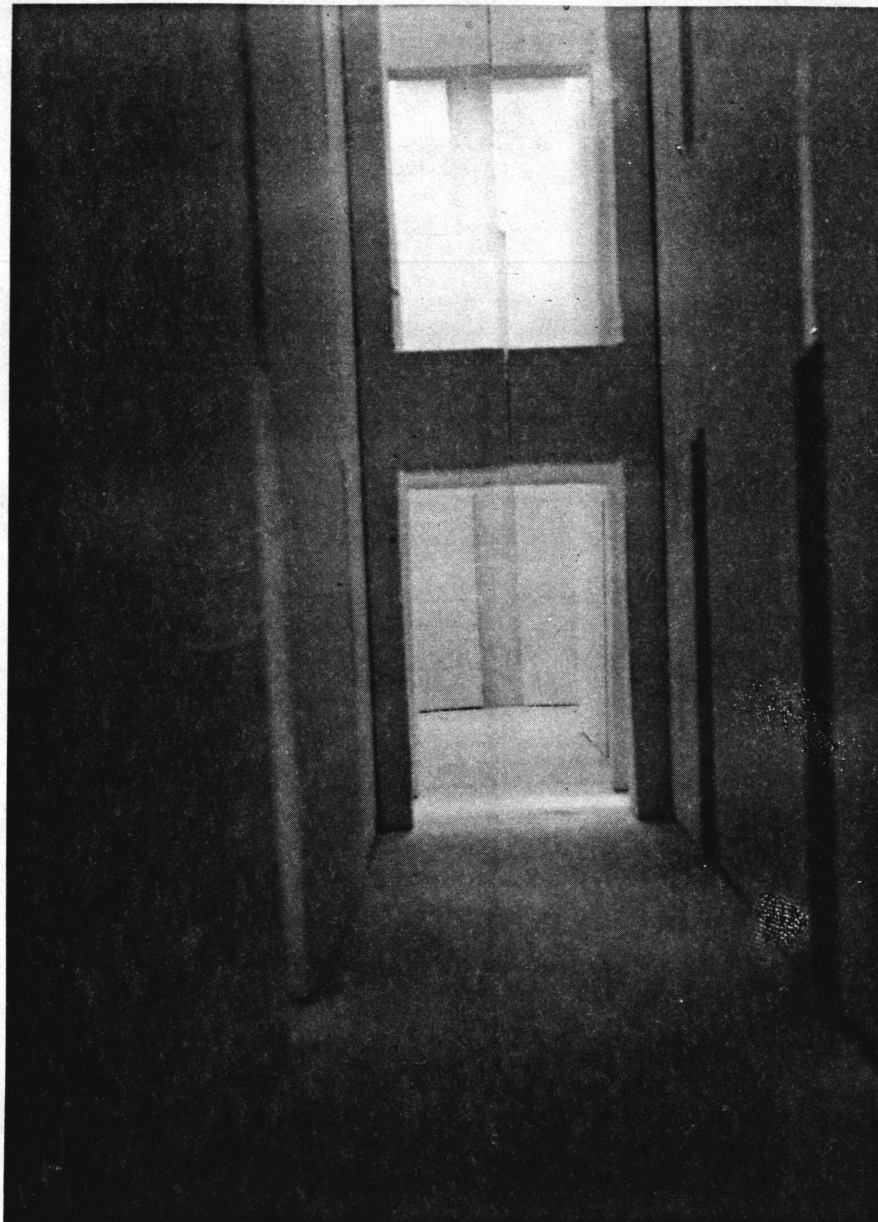
...as one goes deeper into the hill.



The volume enclosed within this wall contain the elements that effect the termination of the axis.



The termination is done by a simple passage connected to the space created within a concrete cylinder



This space is illuminated only through the roof above.



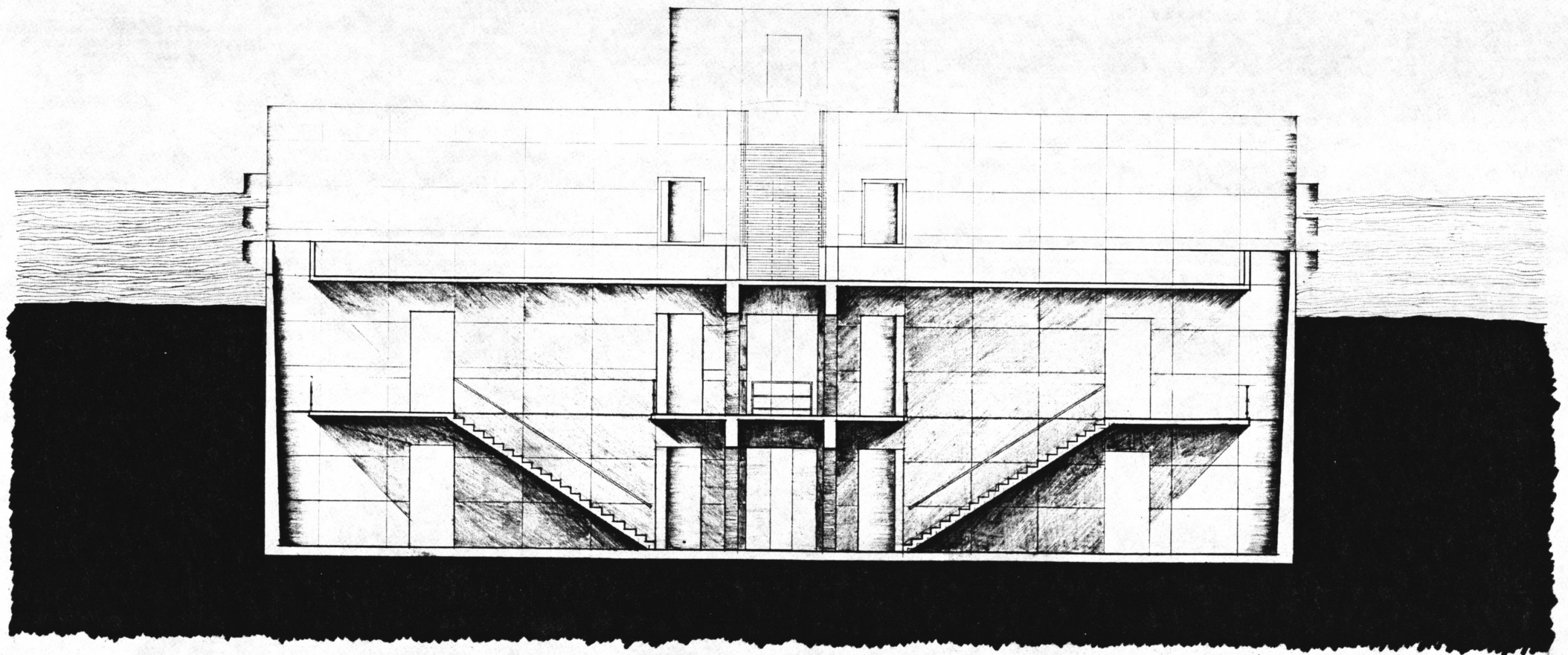
The passage to this space is illuminated through the stairs that form its roof.

Gilbert bond

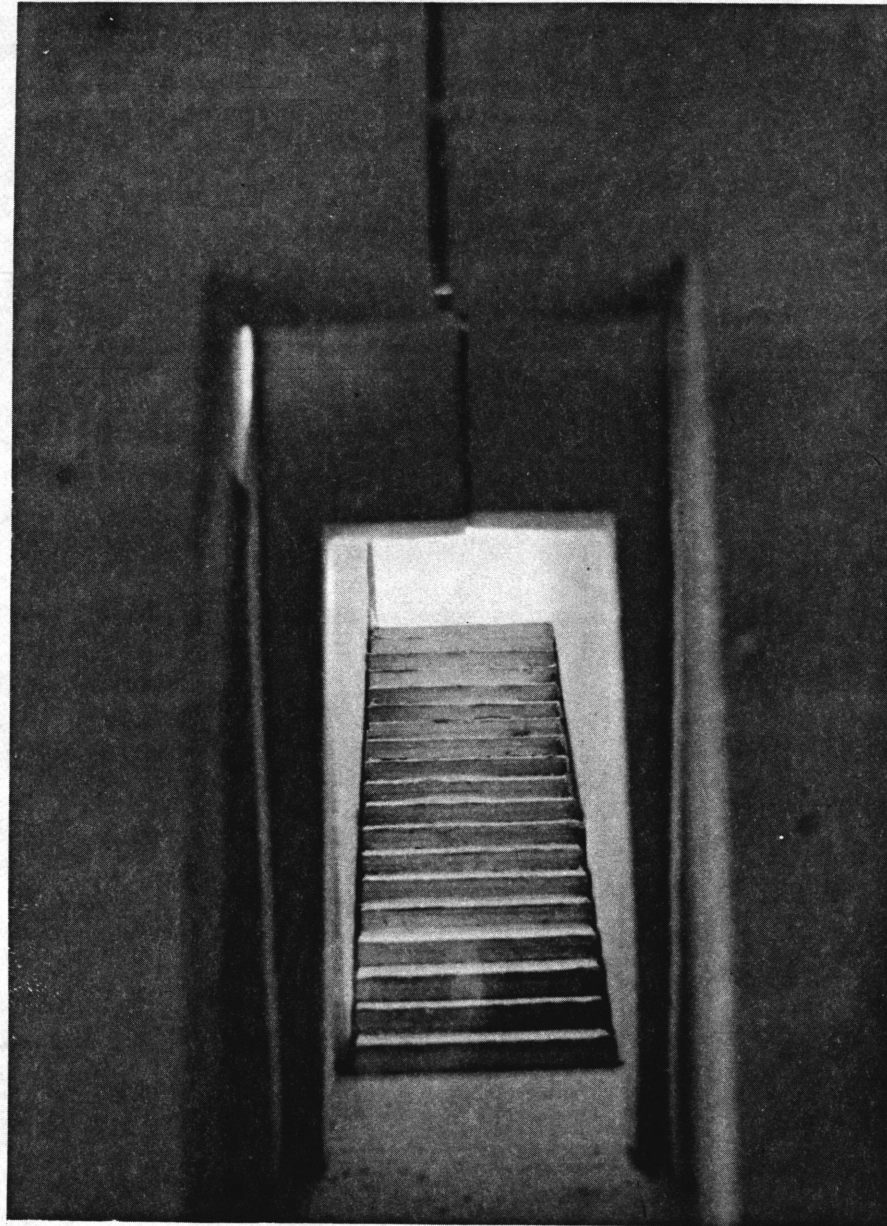
25% cotton

Gilbert

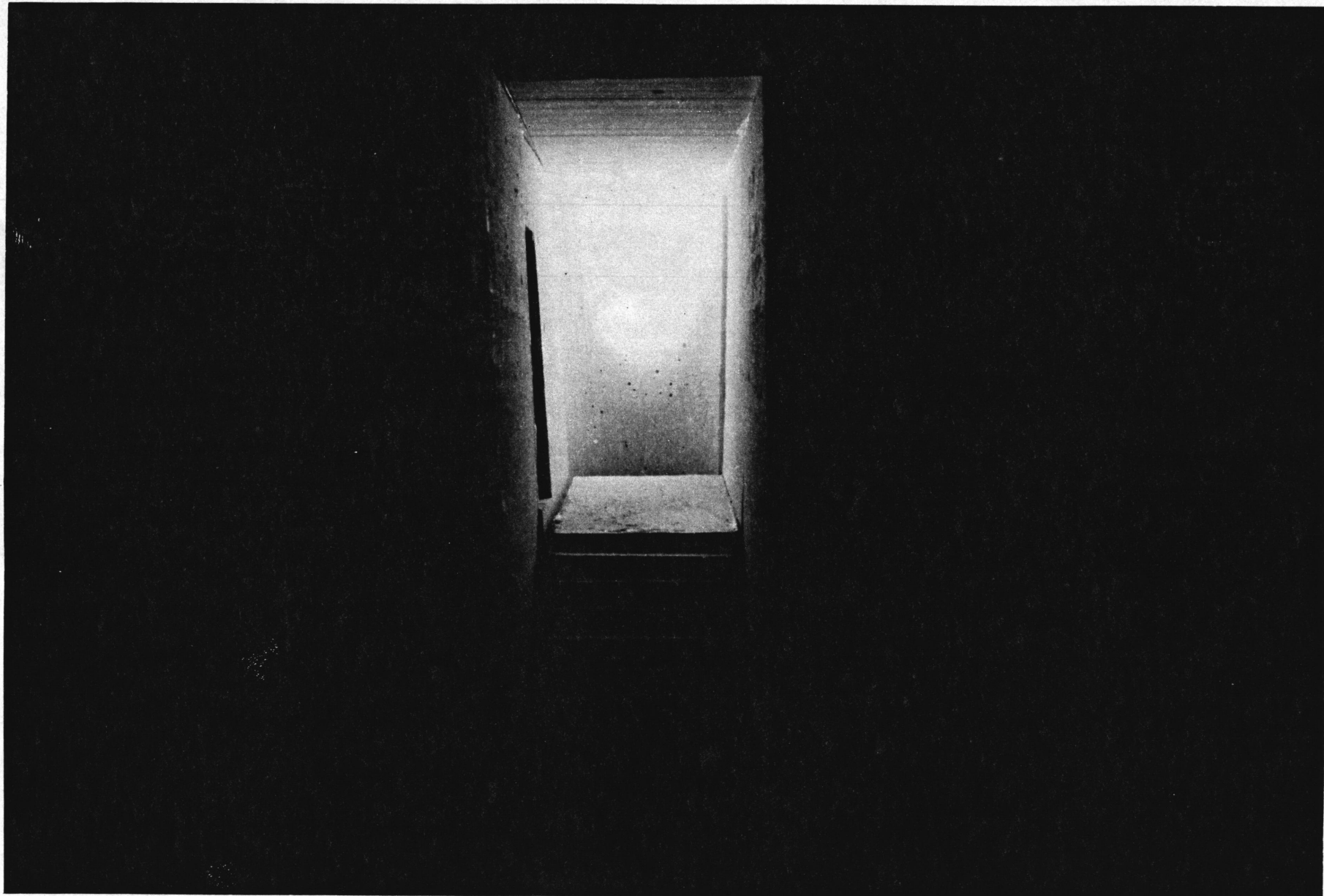
25



This passage is punctuated by cross walls that extend upto the earth,
and like the elements, taper towards the top.



These walls offer the opportunity to make stairs within them, stairs that widen as they rise, due to the taper of the walls.



The power of architecture lies in its capacity to evoke memories,
associations, images and visions of opportunity,
and by doing so transcends its designer.

BIBLIOGRAPHY

- * What Will Be Has Always Been :- The words of Louis Kahn
Richard Saul Wurman, Access Press Ltd. & Rizzoli International
- * Light is the theme :- Comments on Architecture by Louis Kahn.
Compiled by Nell E. Johnson.
Kimbell Art Foundation, Fort Worth, Texas 1975
- * Genius Loci :- Norberg - Shulz, Christian
Rizzoli, New York, 1979.

**The vita has been removed from
the scanned document**