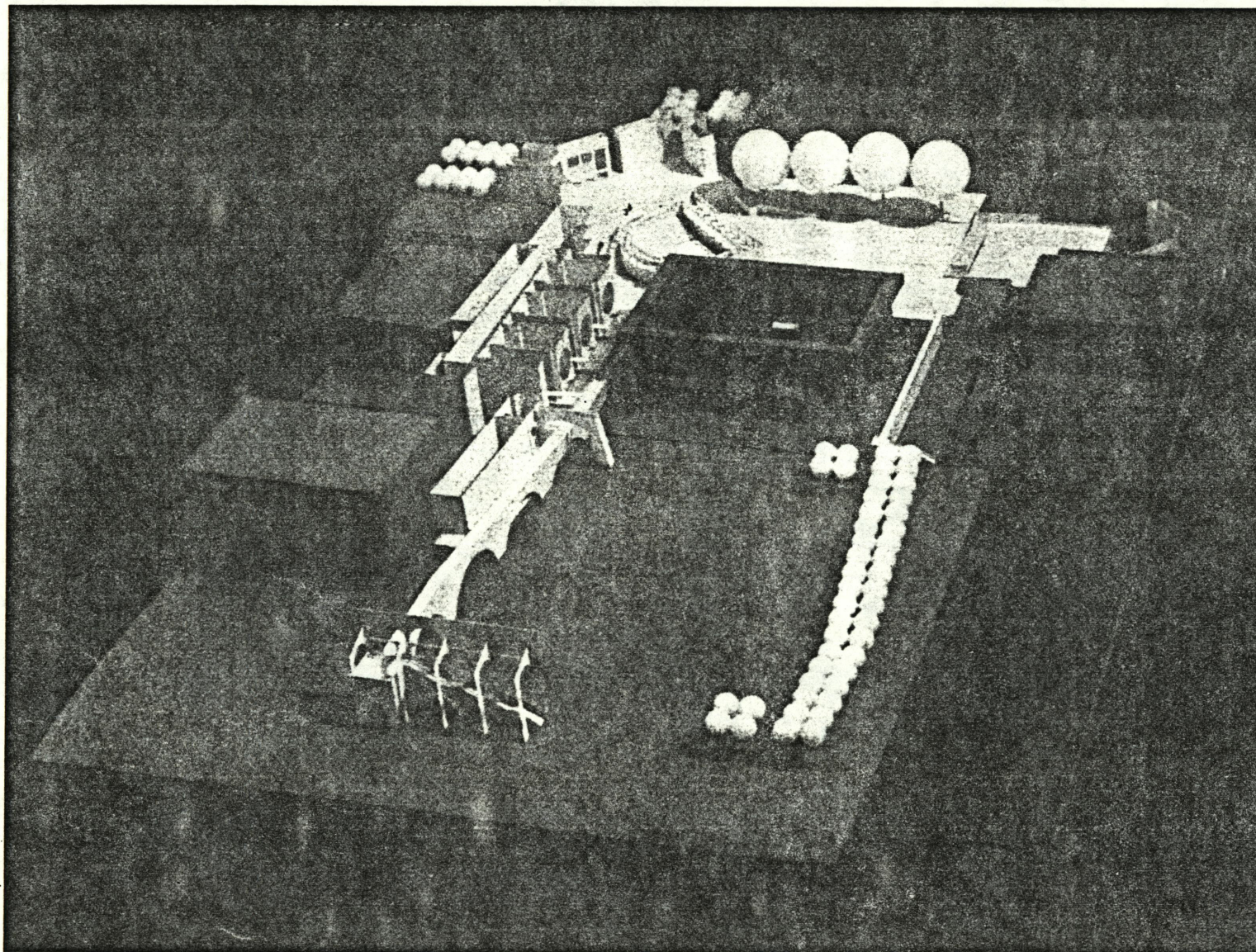


MAKING A *PLACE*
AN INFILL PROPOSAL AT VPI&SU
BLACKSBURG, VIRGINIA, USA

by
Shamim Javed

The proposal



Thesis submitted to the
faculty of the
Virginia Polytechnic Institute
and State University
in partial fulfillment of the
requirements of the degree of
MASTER IN ARCHITECTURE

approved by:

Gregory K. Hunt, Chairman

William W. Brown

Jane Britt Greenwood

Mans C. Rott

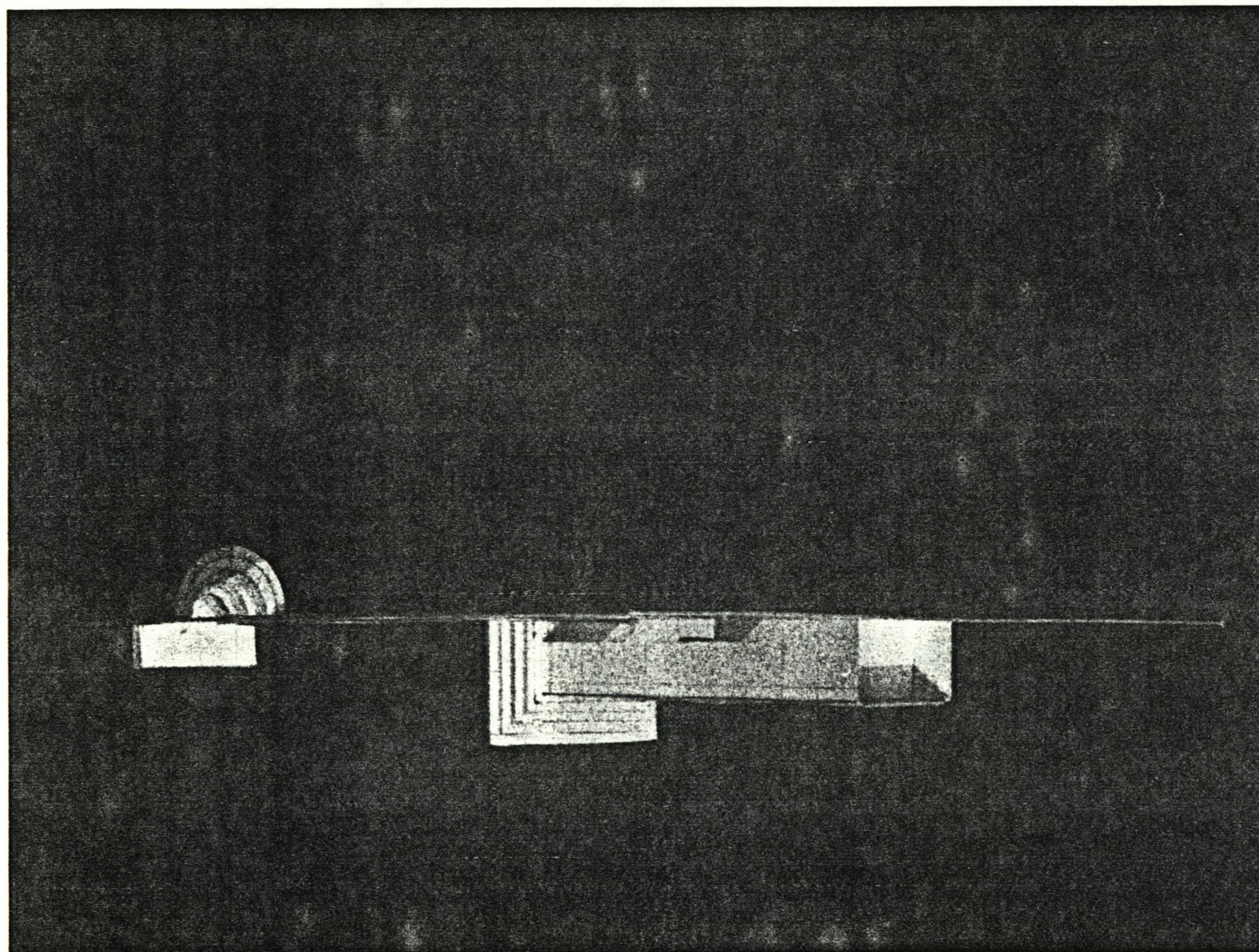
May, 1985
Blacksburg, Virginia, USA

98-551
H00

MAKING A PLACE
AN INFILL PROPOSAL AT VPI&SU
BLACKSBURG, VIRGINIA, USA

by
Shamim Javed

*A portion of the north wall,
House of Arts*



(ABSTRACT)

A pathway to go from the profane to a village of higher aspirations.

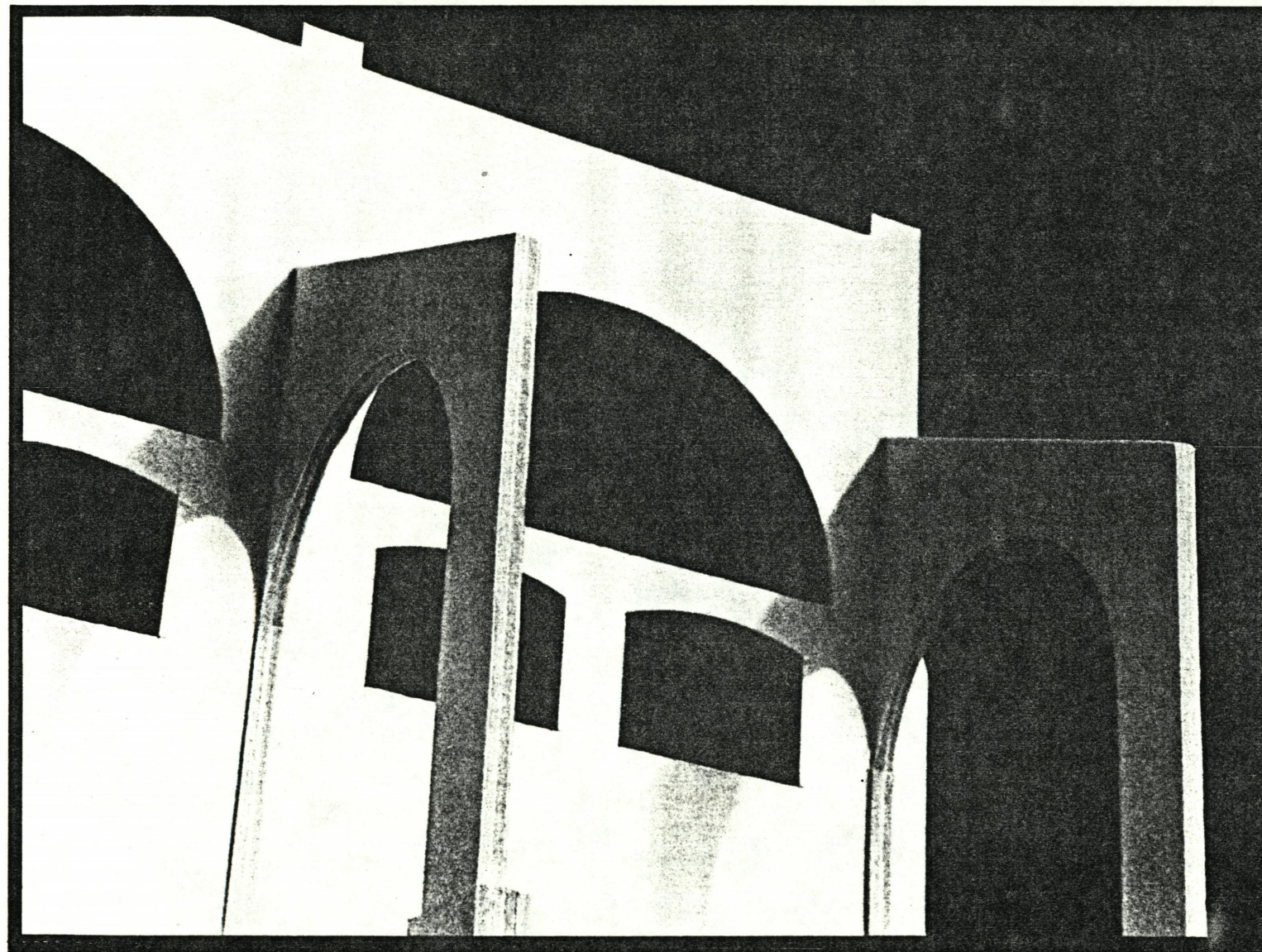
A House of Visual Arts and an existing school of architecture flank the pathway as the realm of the mundane is received into the world of the sublime.

Rows of trees define streams of space flowing into a reservoir of space, gateways marking the points of transition. From the reservoir, these gateways frame the distant mountains giving the urban room a location. The room itself is essentially empty, for it is hardly a statement but, rather, the preparation for one. The room is for the life of the academic village.

Giving order where disorder reigned, providing clarity where ambiguity prevailed, bringing unity where discord was the norm, furnishing hierarchy, meaning, moments of movement and pause, **MAKING A PLACE.**

ACKNOWLEDGEMENTS

*Detail from the stair case,
west end of the Pathway*



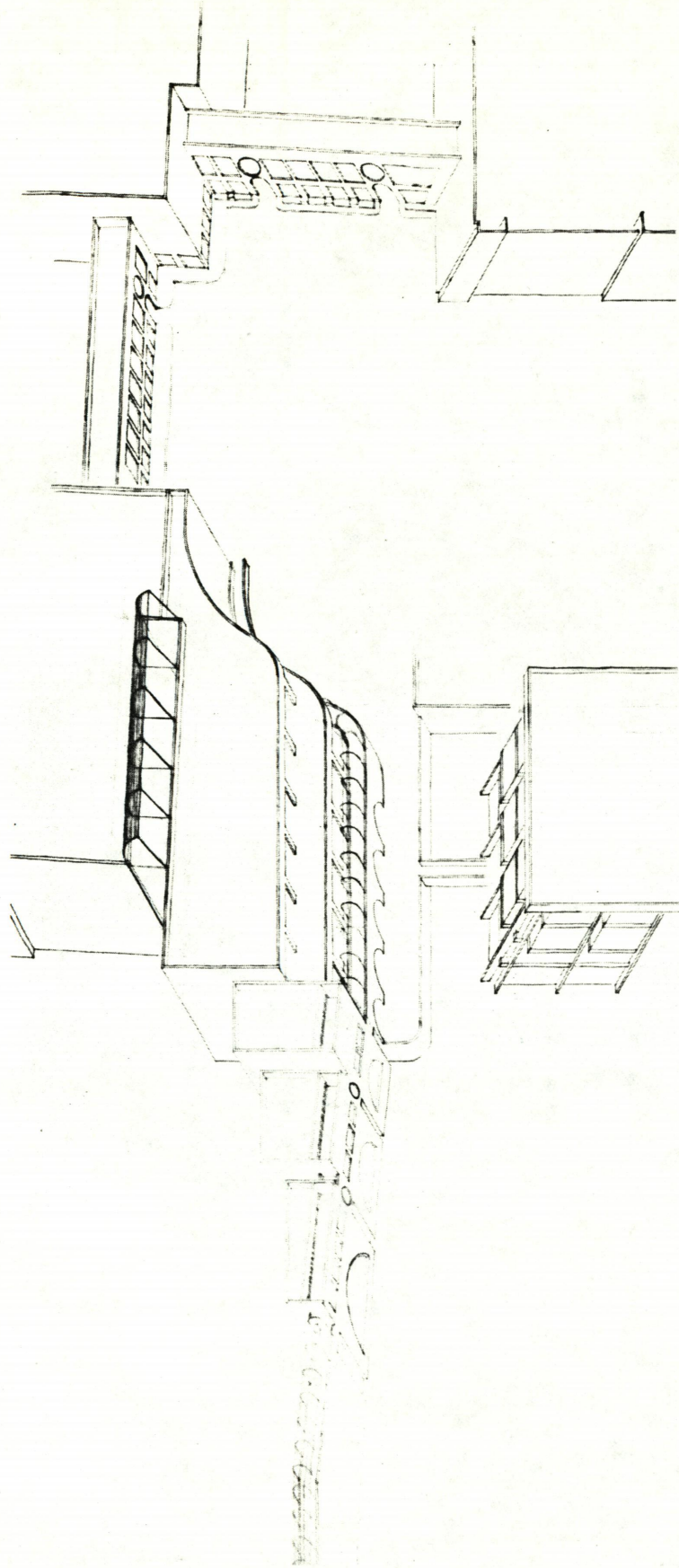
The thesis was a vehicle to a learning experience. My sincere thanks to

for the initial direction;
for the journey;
for the ending when going had gone tough; and
for being there all of the way.

for many of the road maps;
, and for their
companionship; and
for the realization that in
all endings is a beginning.

For the profound love that let me go
when hearts had ached to have me near,
to my father and sisters, - Thank you!

CONTENTS

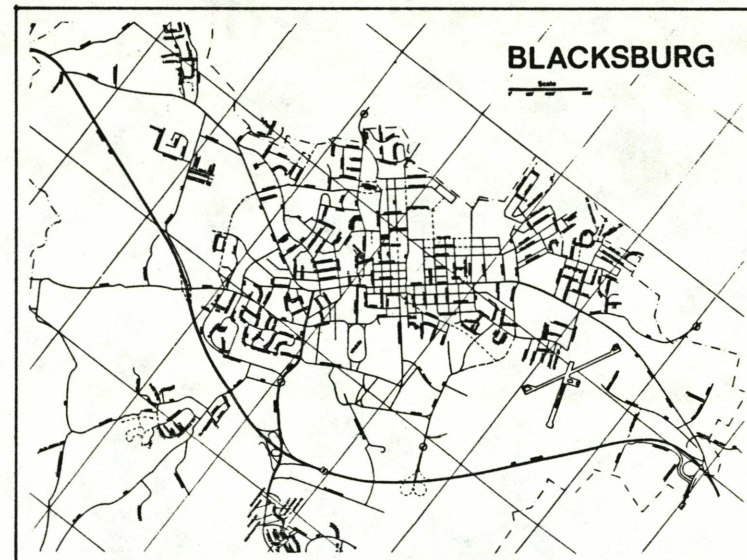
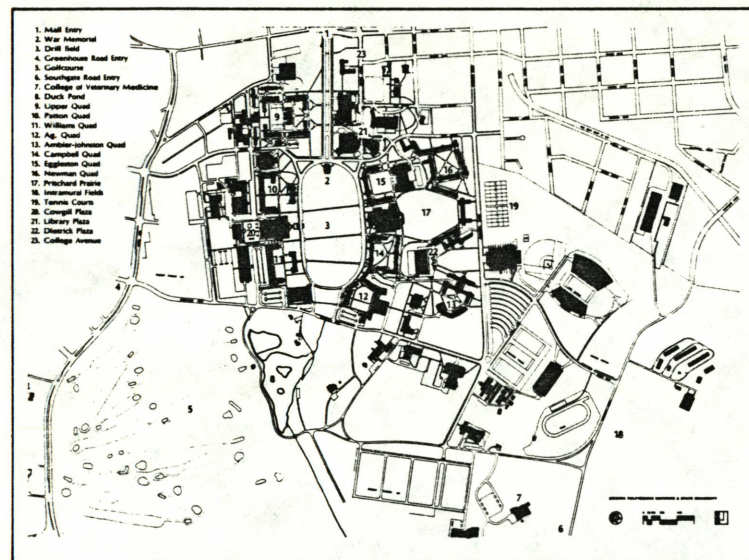


Title	i
Abstract	ii
Acknowledgements	iii
Table of Contents	iv
I. CANVAS:	
INTRODUCTION	1
CHARACTER/TEXTURE	2
BEGINNING OF AN IDEA	4
II. PAINTS:	
PATHWAY	6
HOUSE OF ARTS	8
GATEWAY	13
III. PAINTING	16
IV. PAINTER	18

*Earlier scheme:
the "infill" volumes*

I. CANVAS

Location of the site



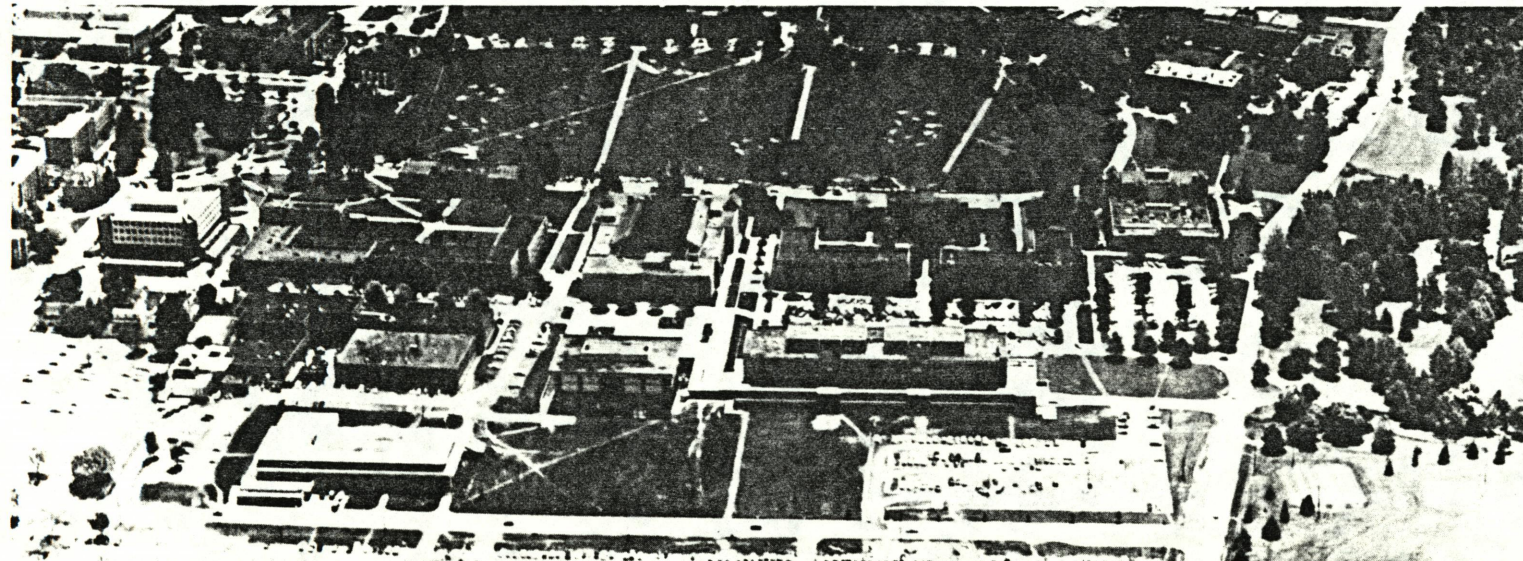
INTRODUCTION

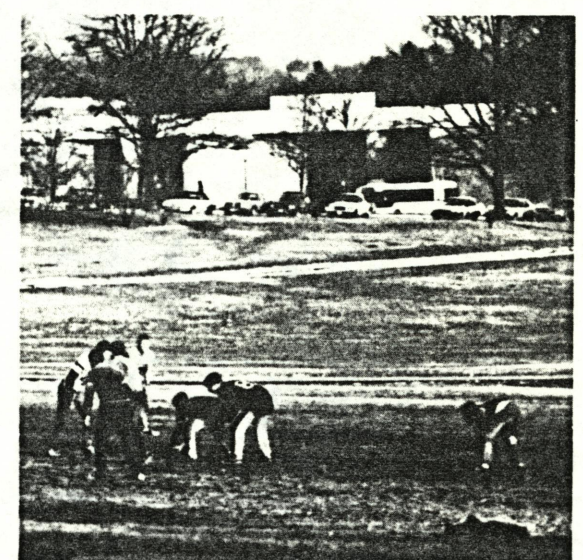
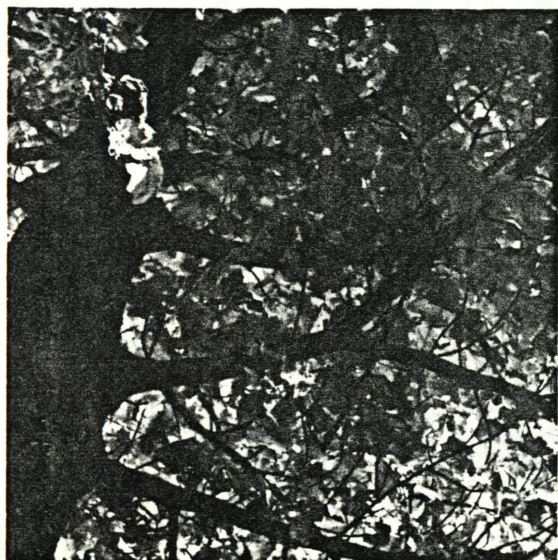
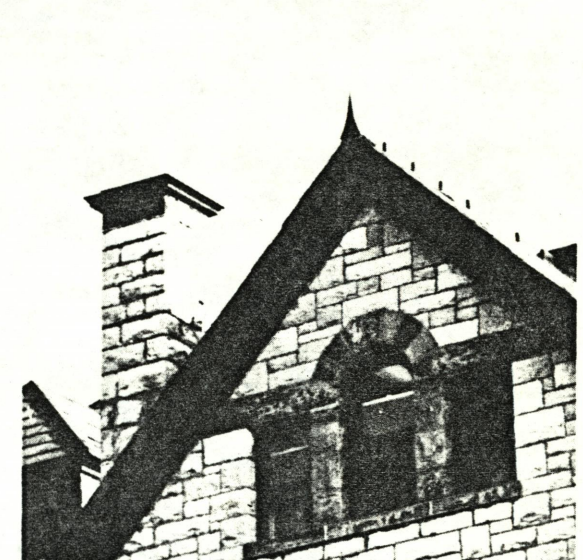
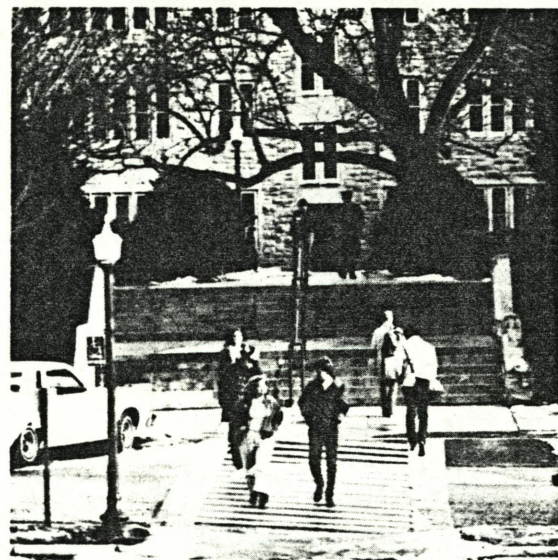
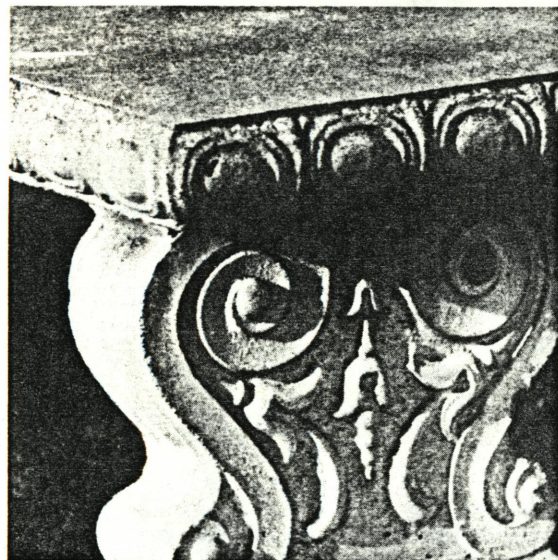
There is a “canvas” (site), some “paints” (designed elements), and a “painter” (the designer). All three come together to make a “painting.”

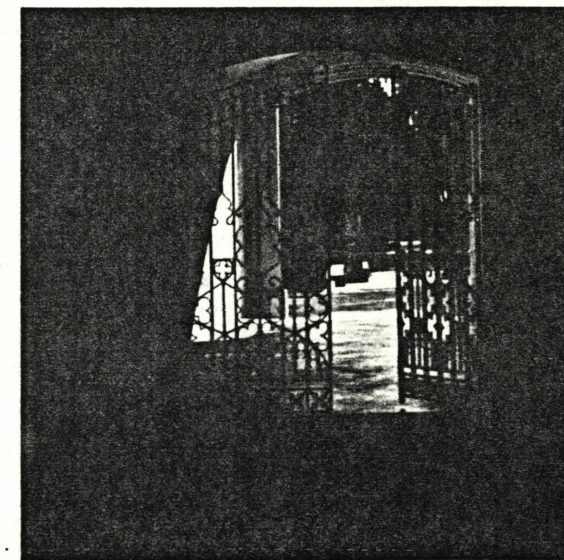
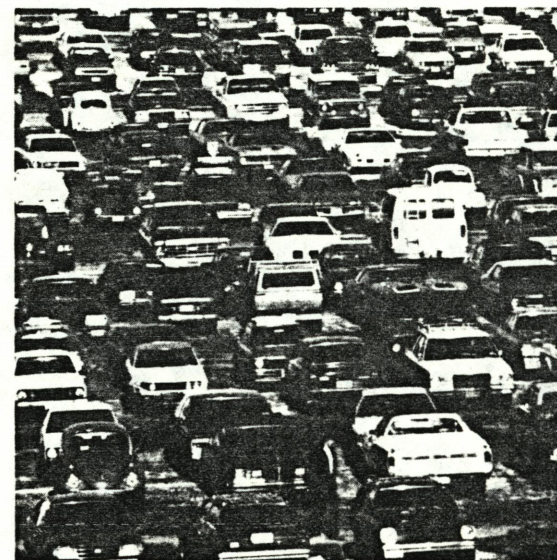
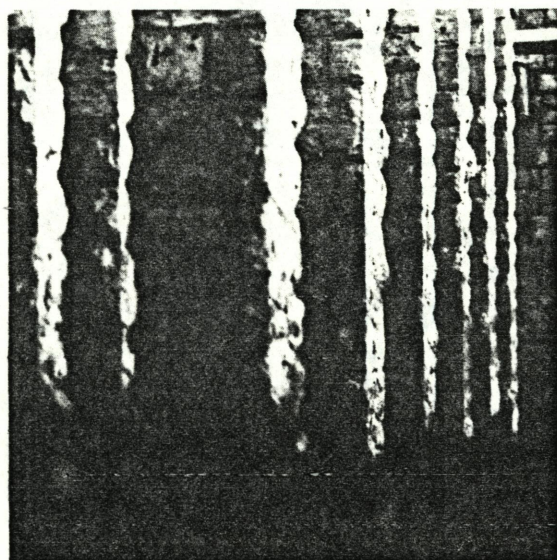
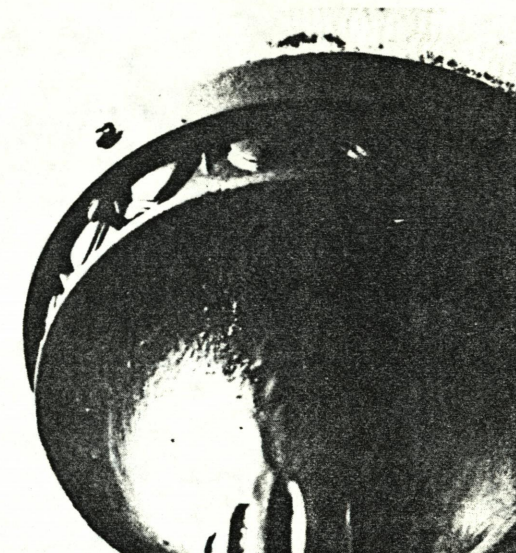
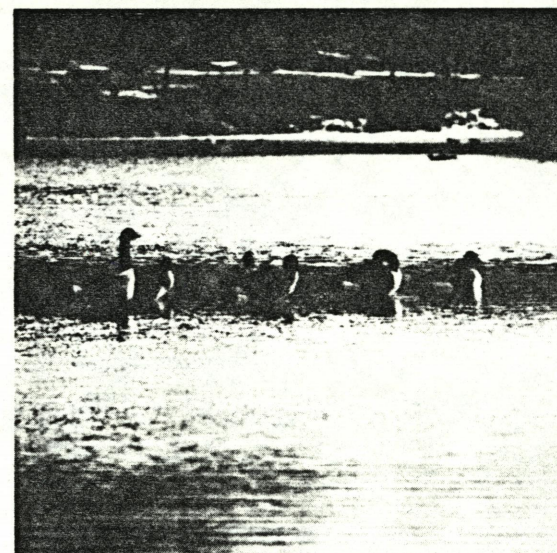
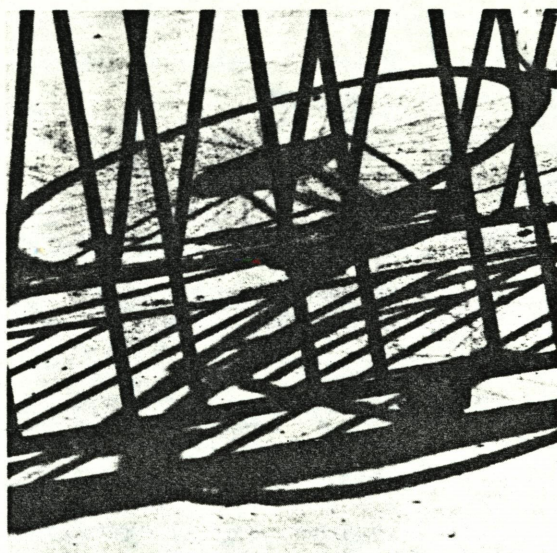
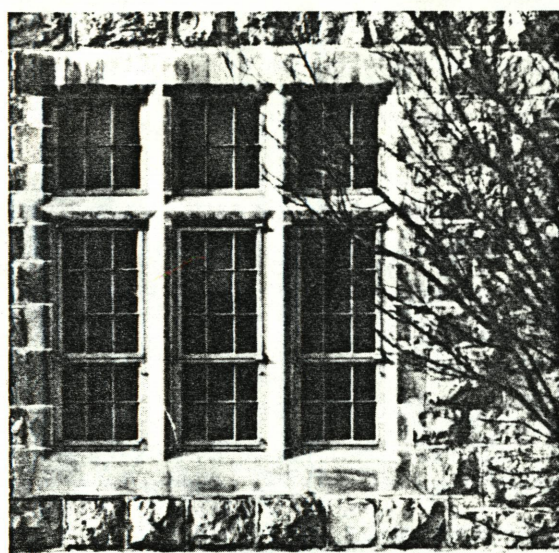
The “canvas” is a portion of the Virginia Polytechnic Institute and State University’s campus at Blacksburg, Virginia, USA. The university was established on October 1, 1872 as Virginia Agricultural and Mechanical College. Today, it is the biggest educational institution in the state with 21,000 students studying in eight colleges: Arts and Sciences, Agriculture, Architecture, Business, Engineering Education, Human Resources, and Veterinary Medicine.

The core campus consists of a set of buildings in the Collegiate Gothic style surrounding the drillfield—the central open space of the campus. Over the years the campus has expanded with additional buildings of different styles and materials until, particularly at the north-west portion of the campus, it is now a hotchpotch of bad architecture. It is for this portion of the campus that this design proposal was developed.

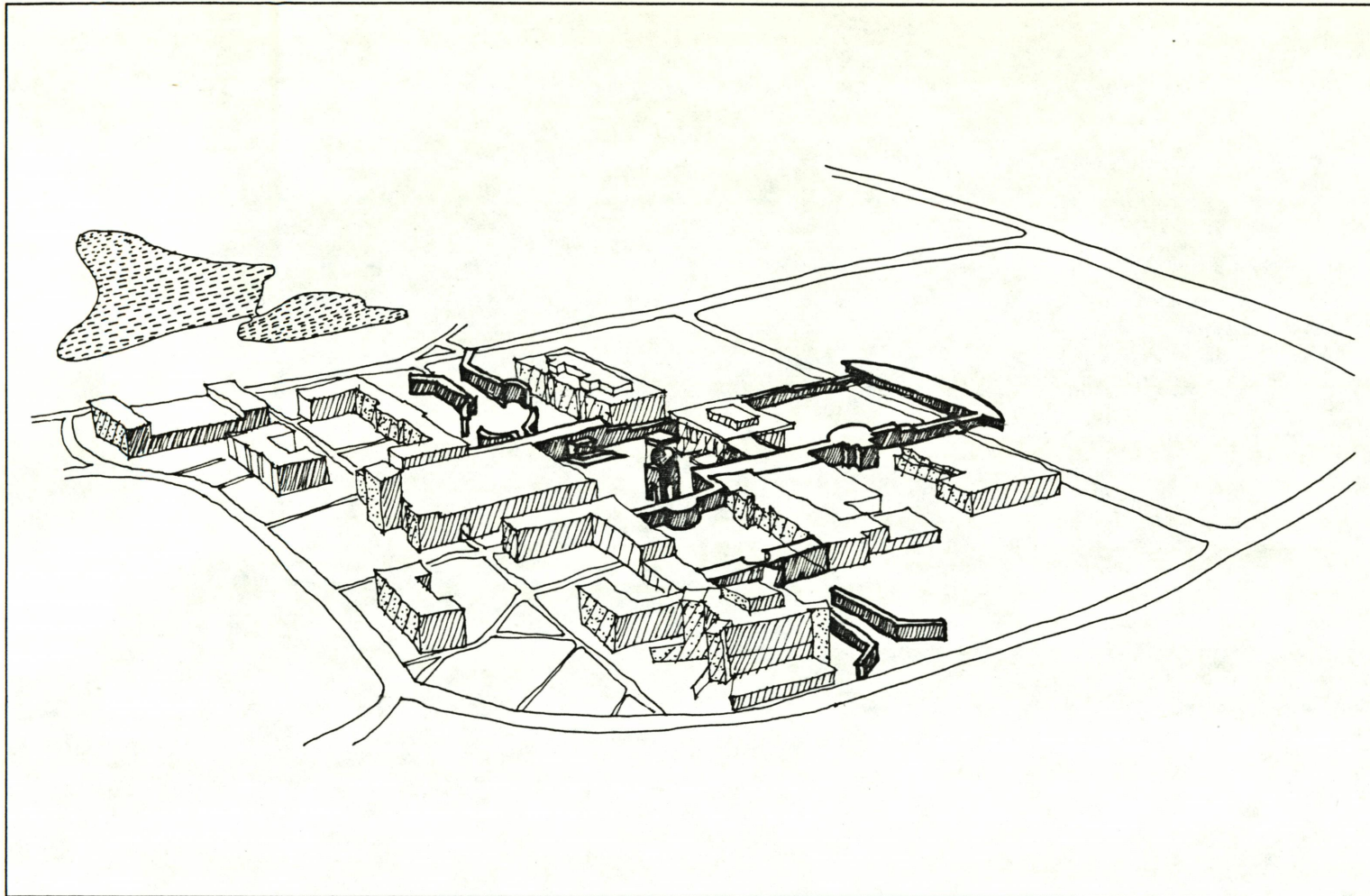
Due to the increased awareness about the optimum use of resources in the last decade or so, the university has adopted the “infill” approach for all future expansion of the campus. The design idea presented here respects that concept.



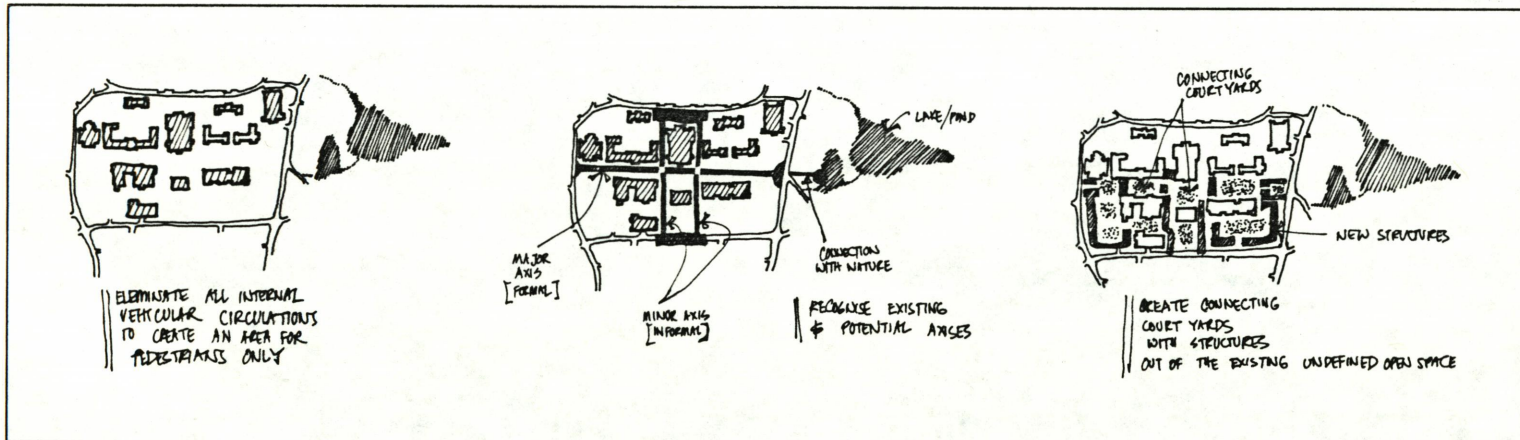




BEGINNING OF AN IDEA



"Infill" volume

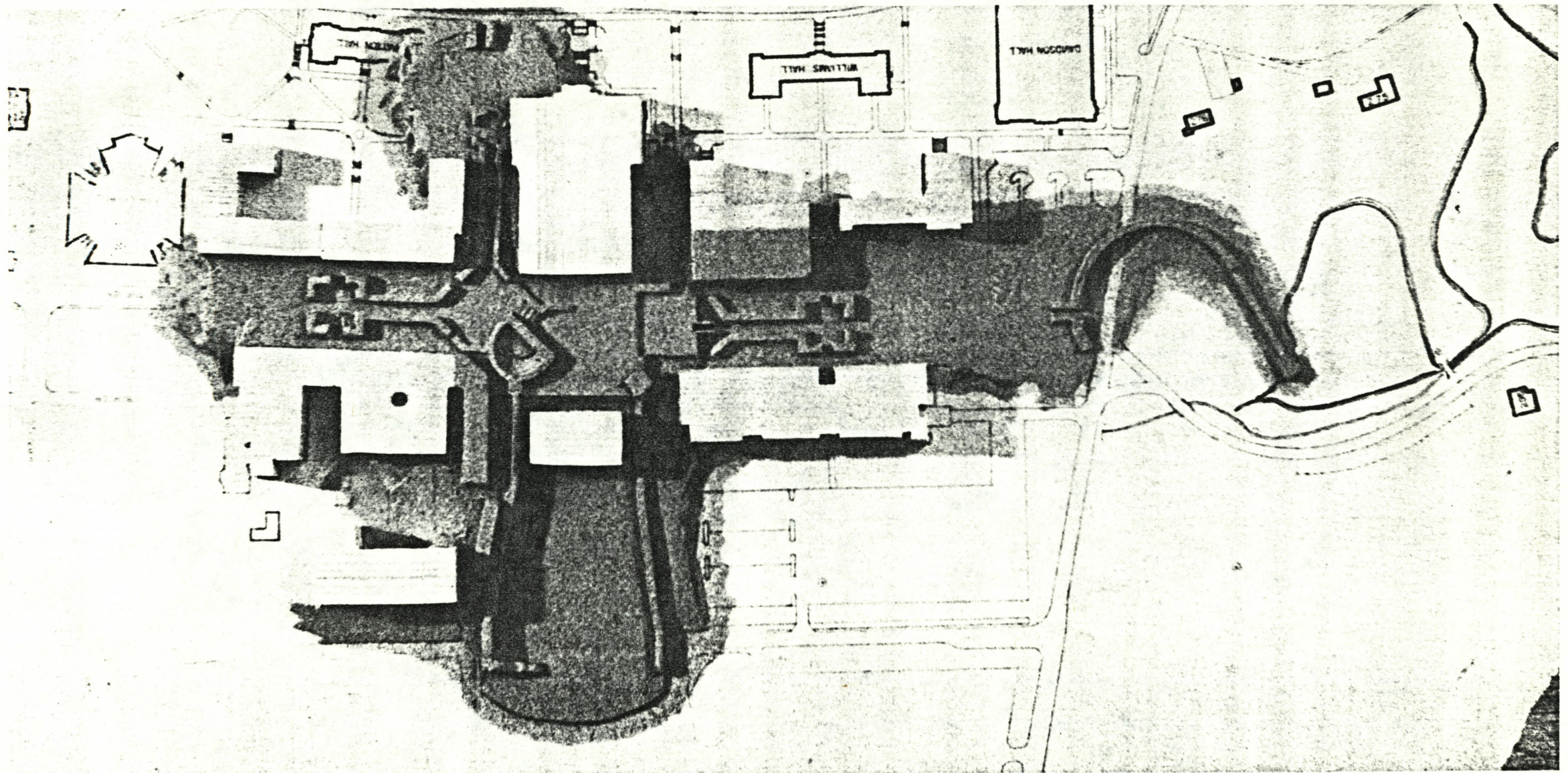


Initial assumptions:
 - a pedestrian zone
 - major and minor axes
 - connecting courtyards

360 degree view
 from the midpoint of the site

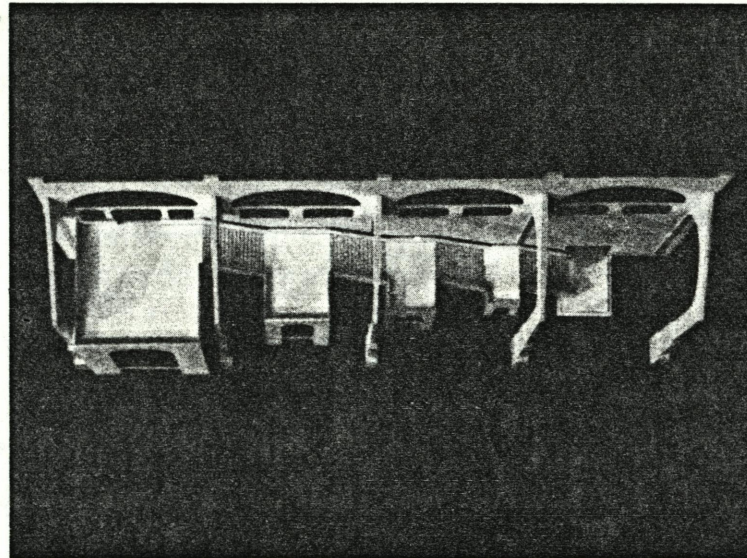
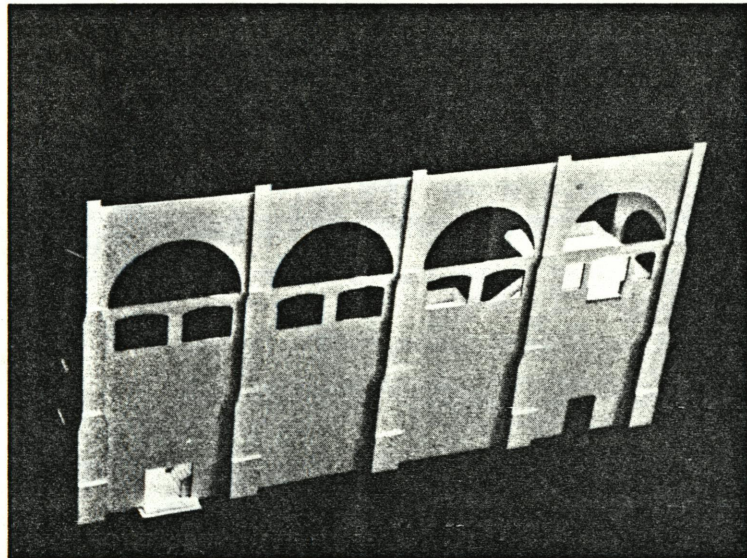


The "structure" of the proposal



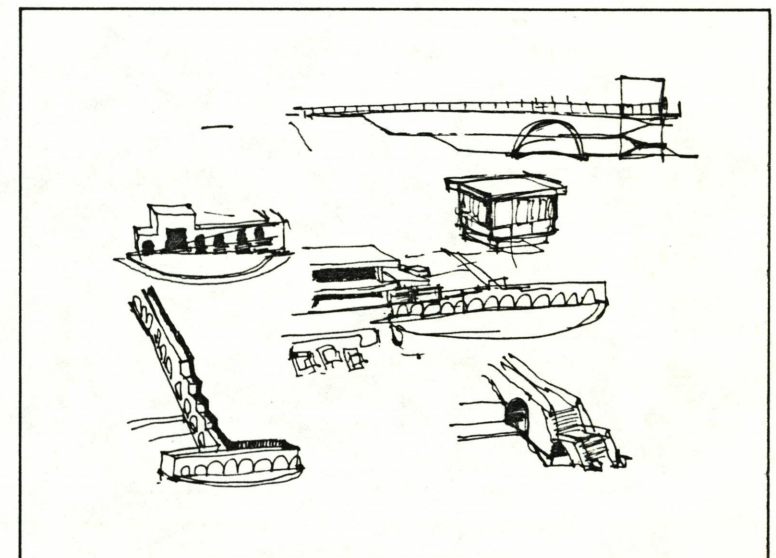
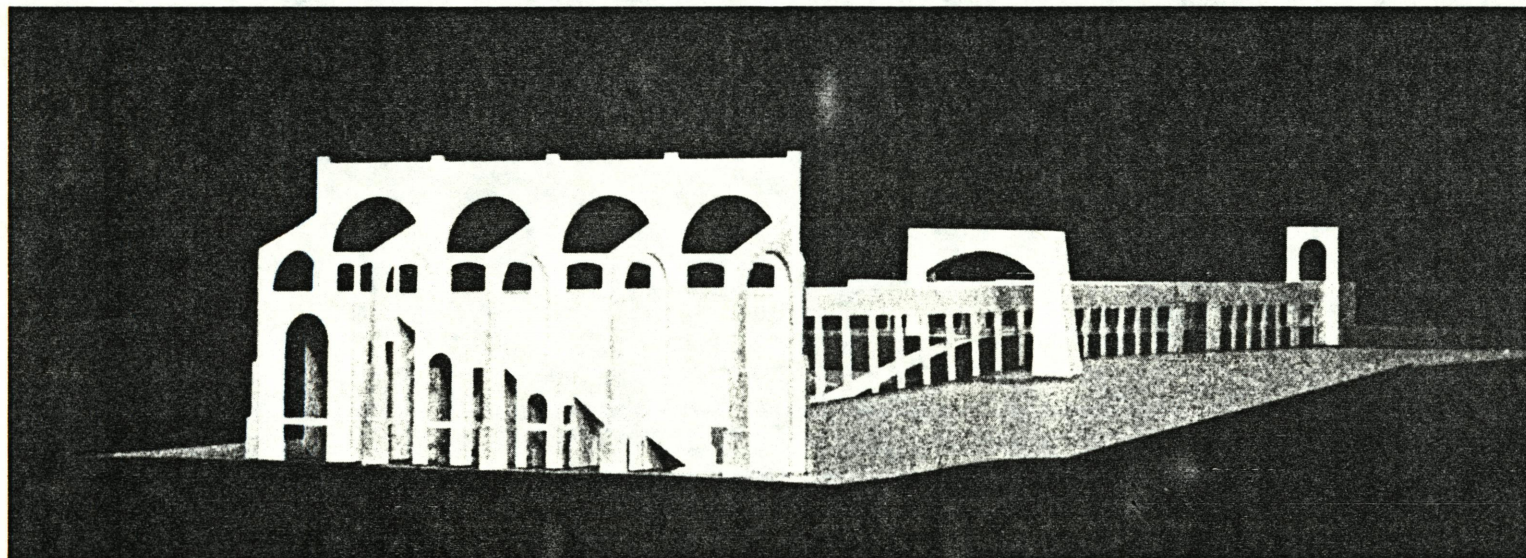
II ELEMENT: THE PATHWAY

the Pathway

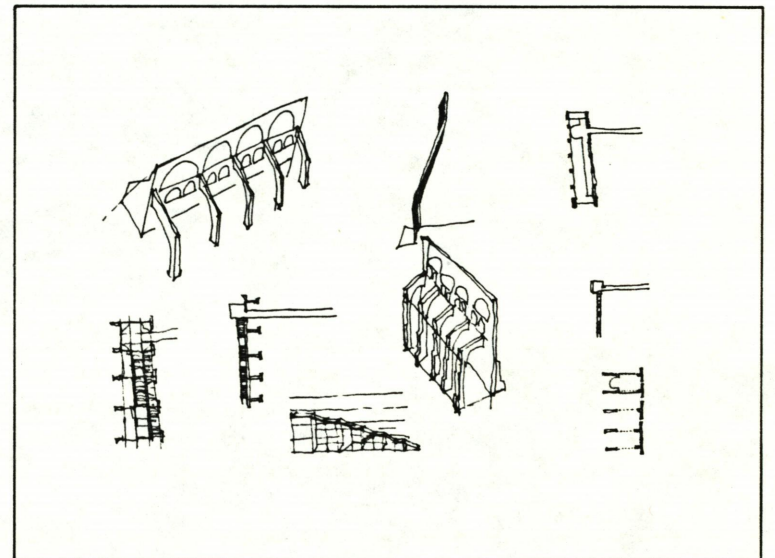
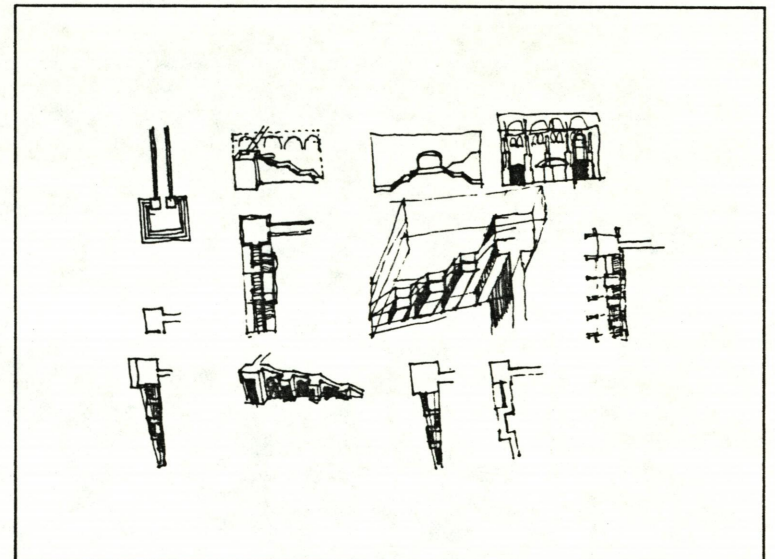
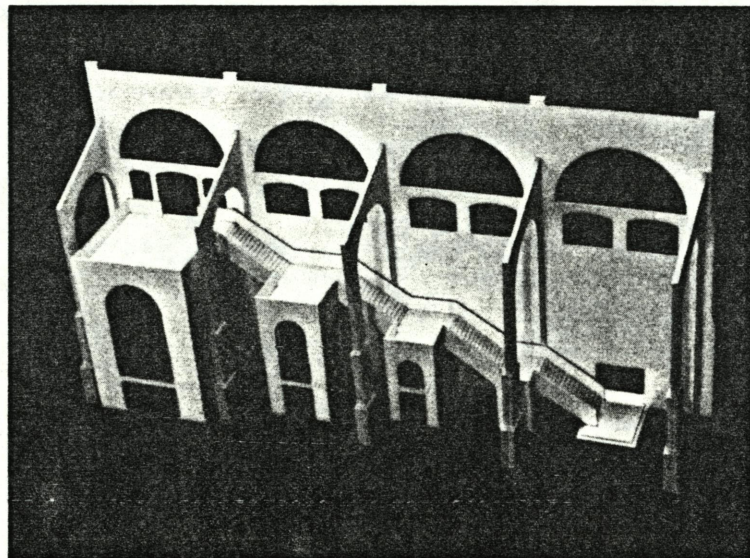
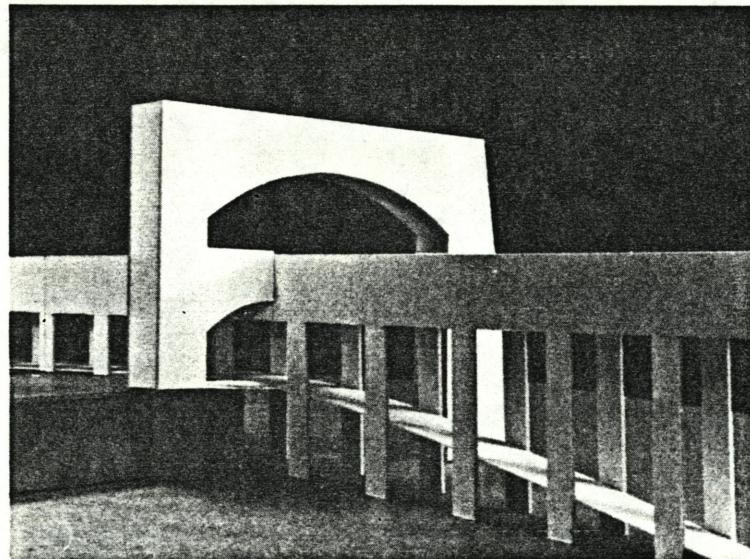
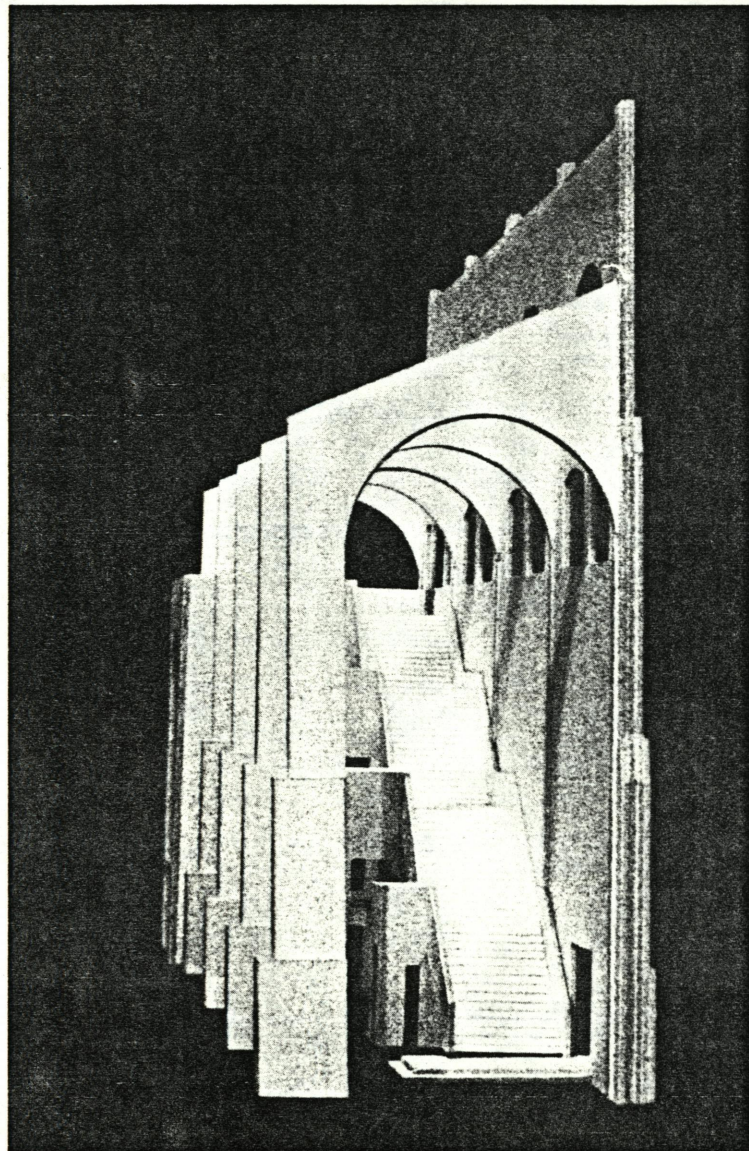


A huge parking area and a village of academic buildings sit next to each other. The path was conceived as a link between these two. Its location is not arbitrary, for it sits where there is already a well established pedestrian route.

The pathway begins with a set of stairs at the parking-lot. A conscious place was created for the stairs. This structure is also a "window" to frame the distant mountains. An Exhibition Gallery, a House of Arts and a School of Architecture occur along the way as the path moves to terminate in an amphitheatre.

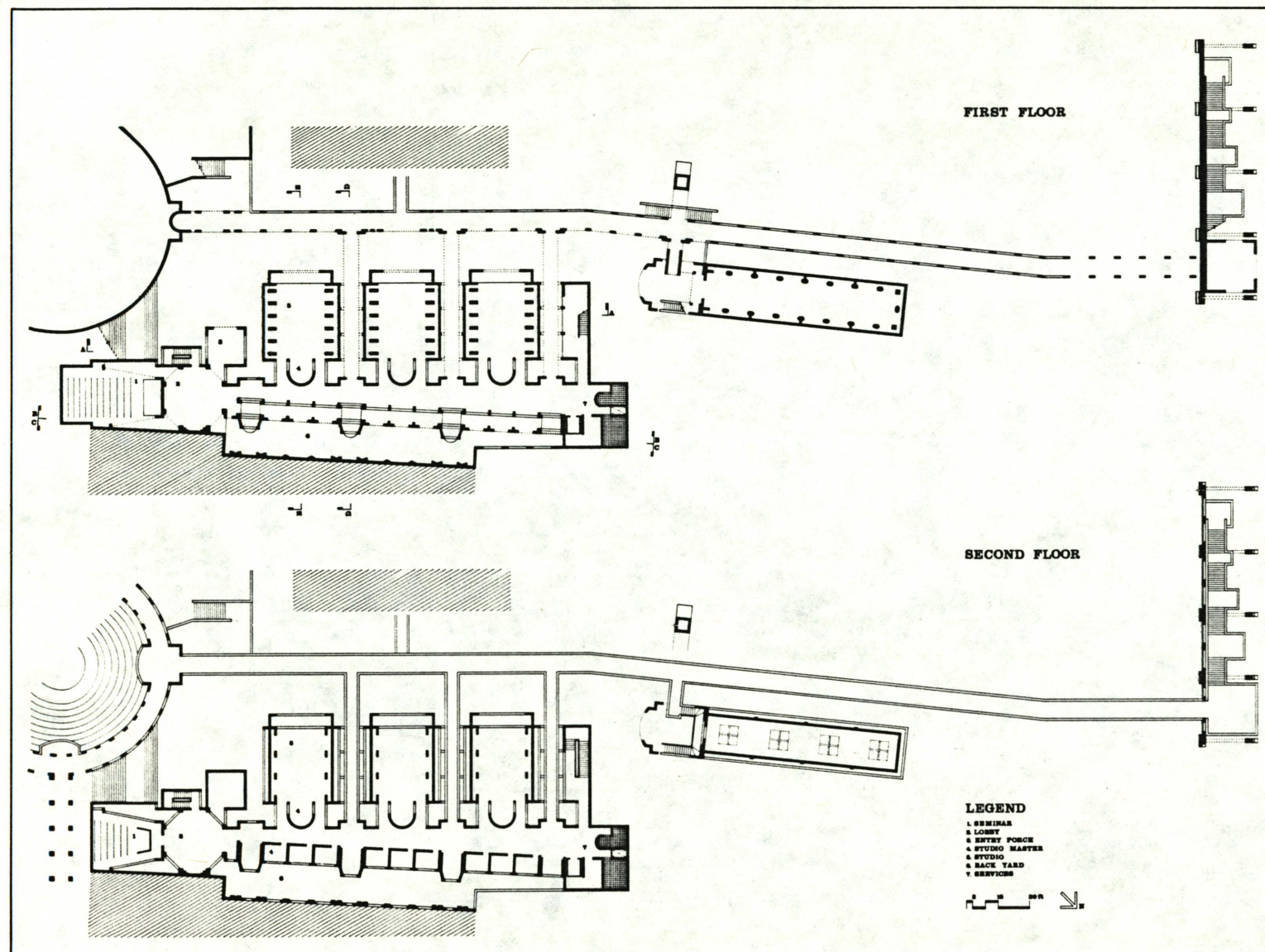


the Pathway



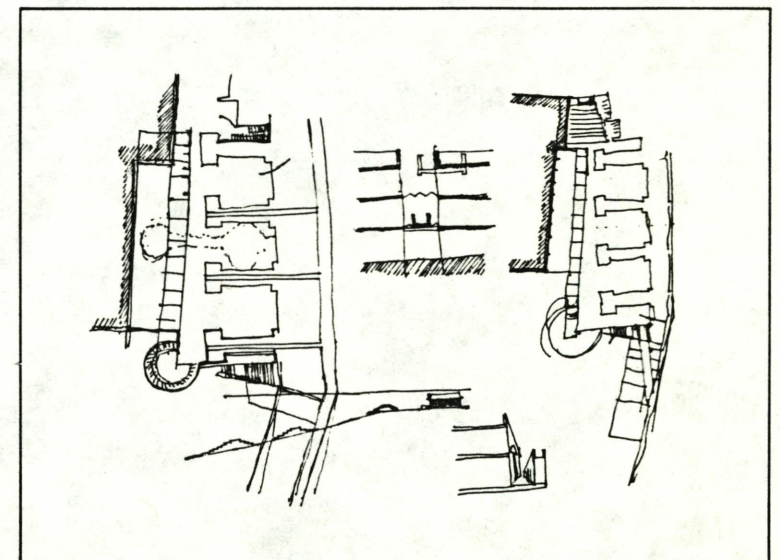
II. ELEMENT:
HOUSE OF ARTS

Plan, House of Arts

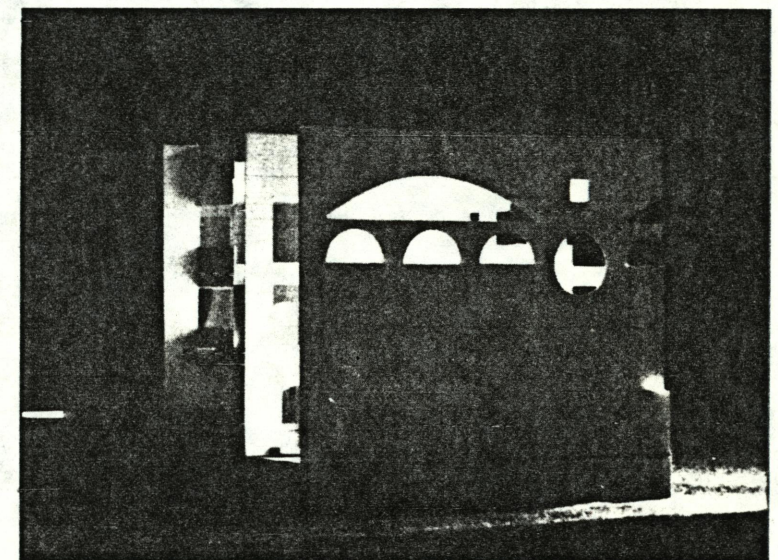
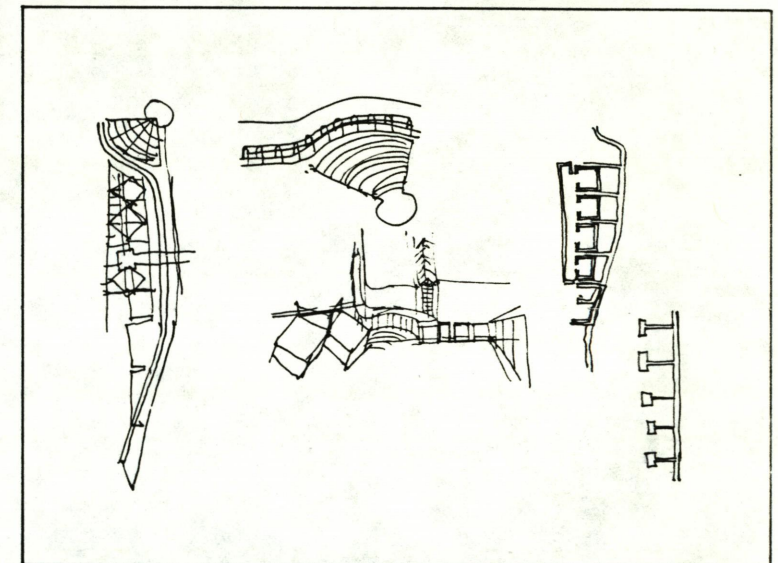
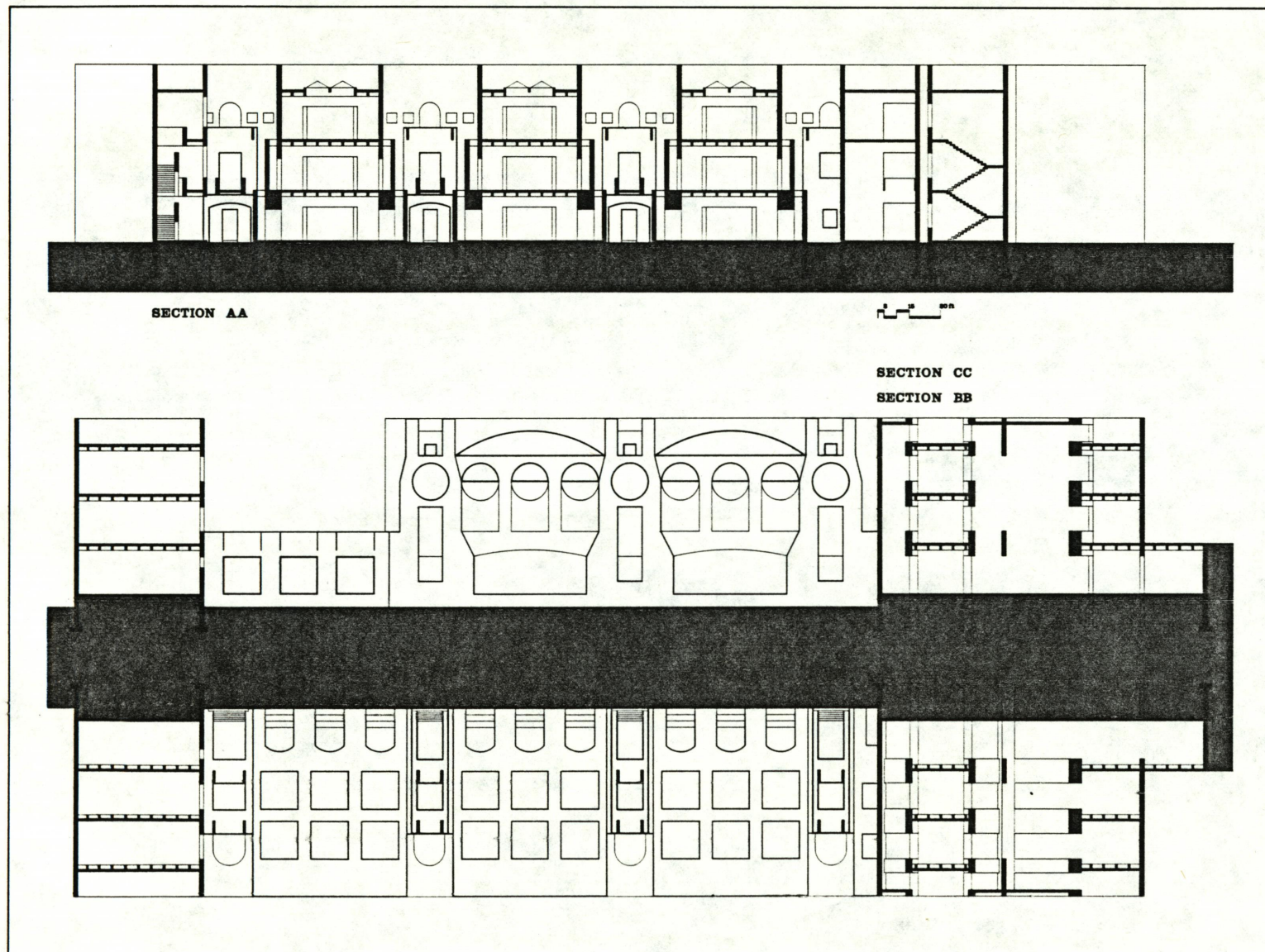


The design is an attempt to bring natural light into the studios of the school for the visual arts, respecting the nature of the brick-construction. A "back yard" acts as a buffer between the school and an existing building. This would be a good place for the "children" of the House to meet in small groups.

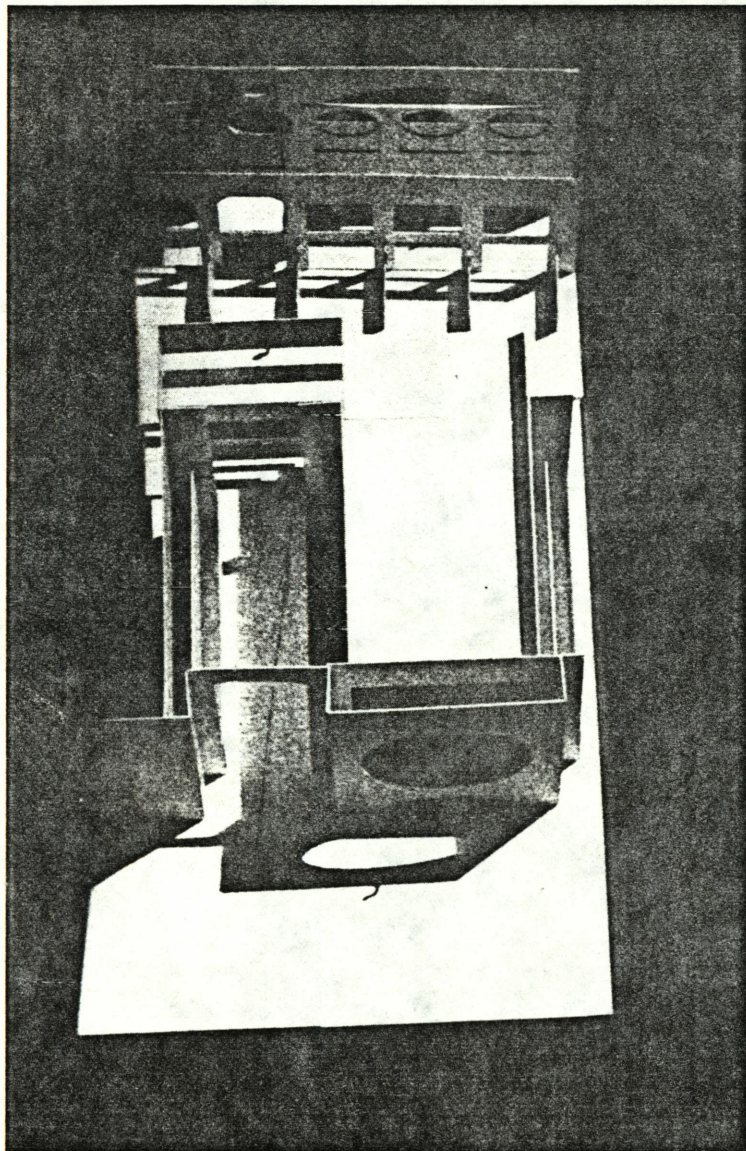
Adjacent to the House is an Exhibition Gallery, to display students' works as well as visiting exhibitions to the university. Directly approachable from the Pathway, the Gallery with its exhibits would be an interesting 'rain shelter' for the passersby in bad weather. A walk through the exhibits would be a refreshing break from the daily pace at other times, too.



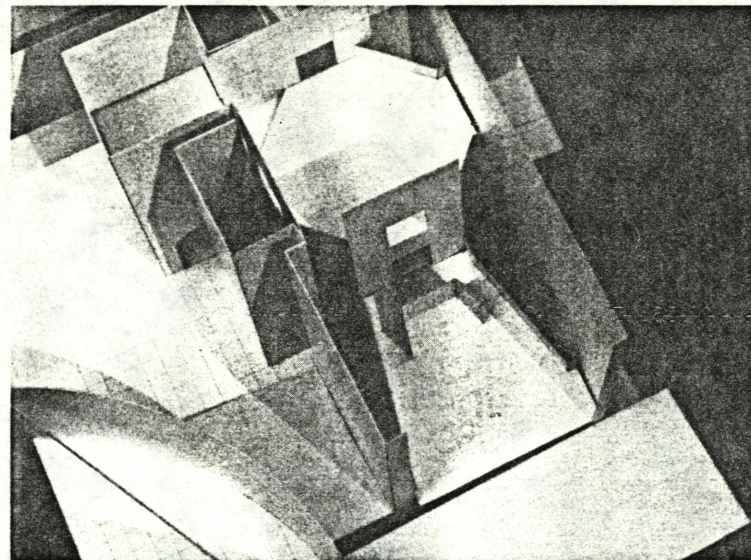
*Vertical Sections,
House of Arts*



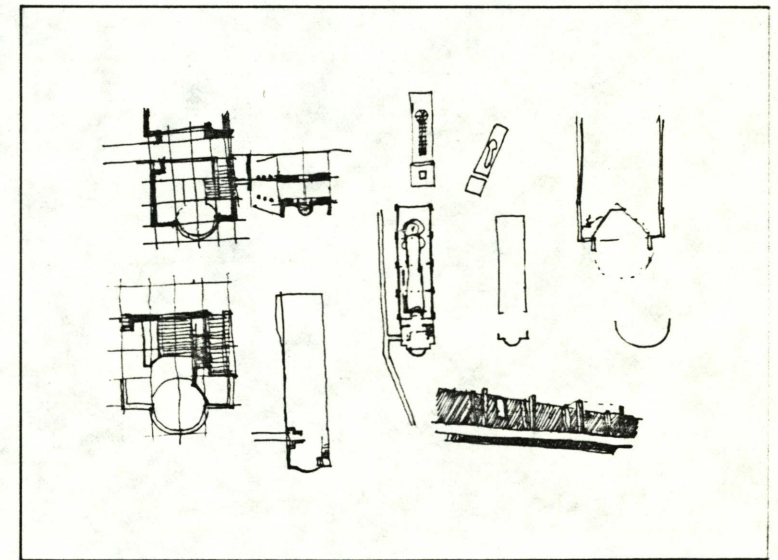
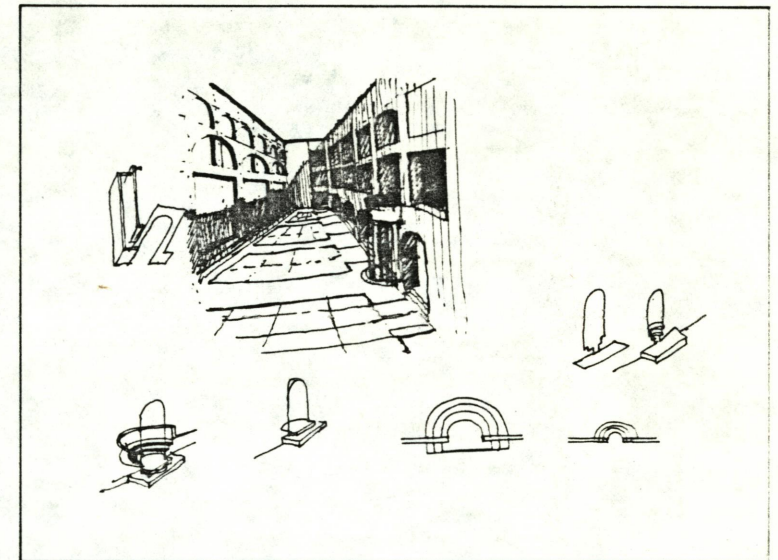
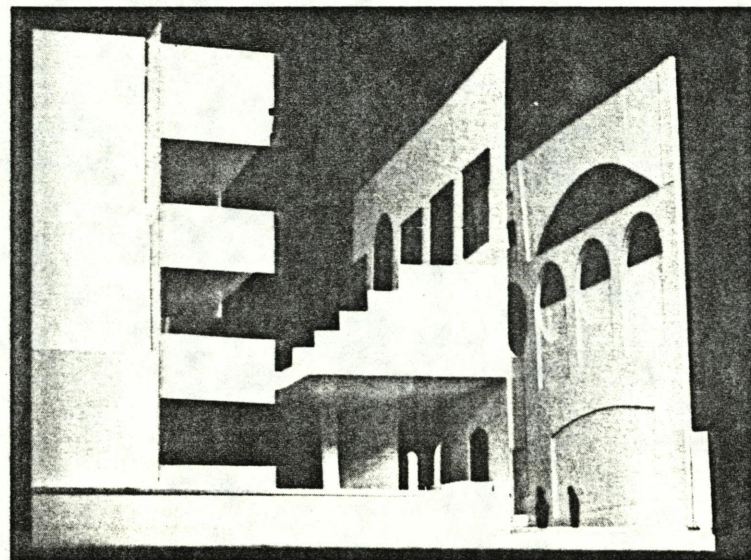
Layers in the building cross-section



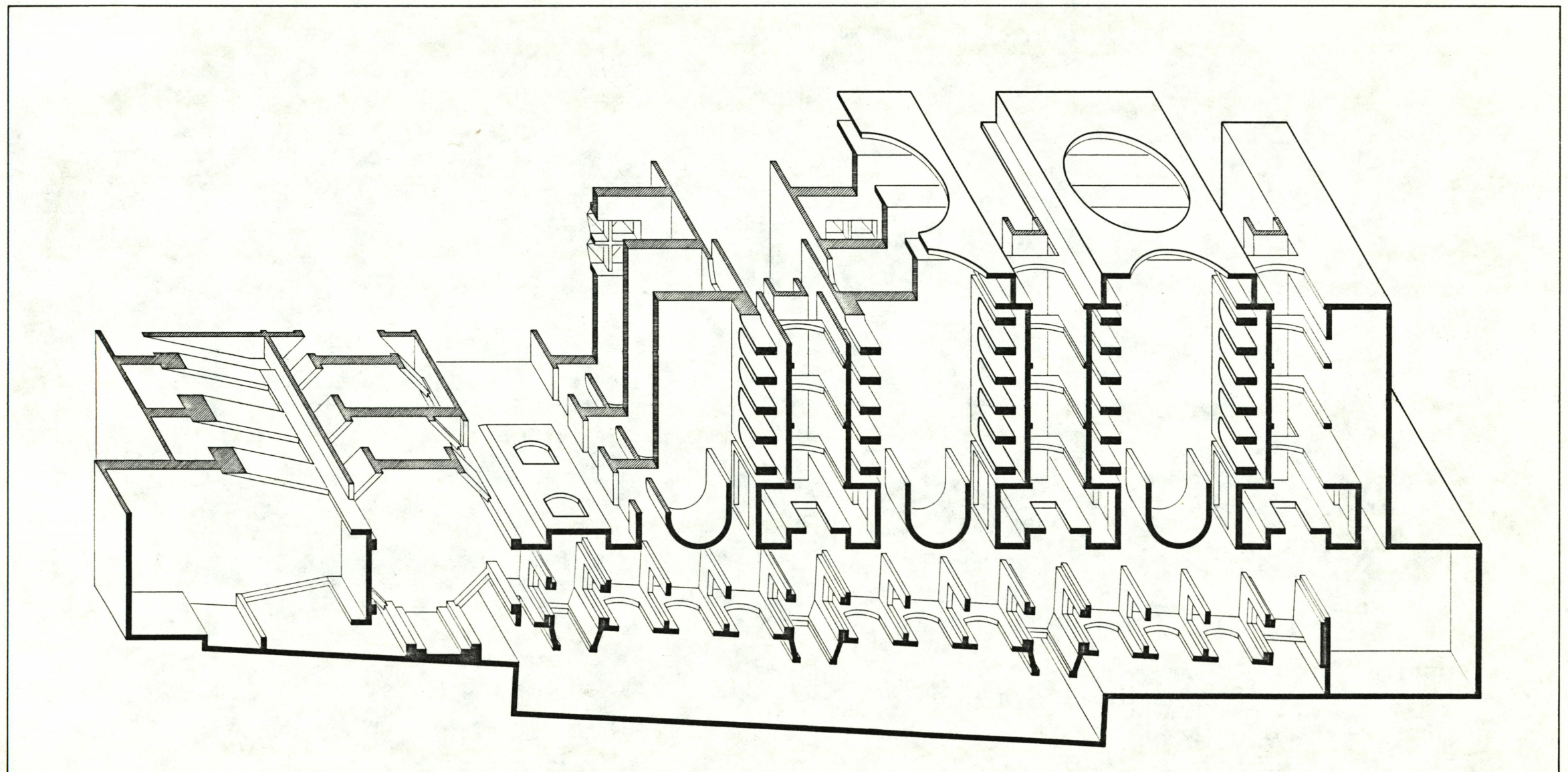
Lobby and seminar floors



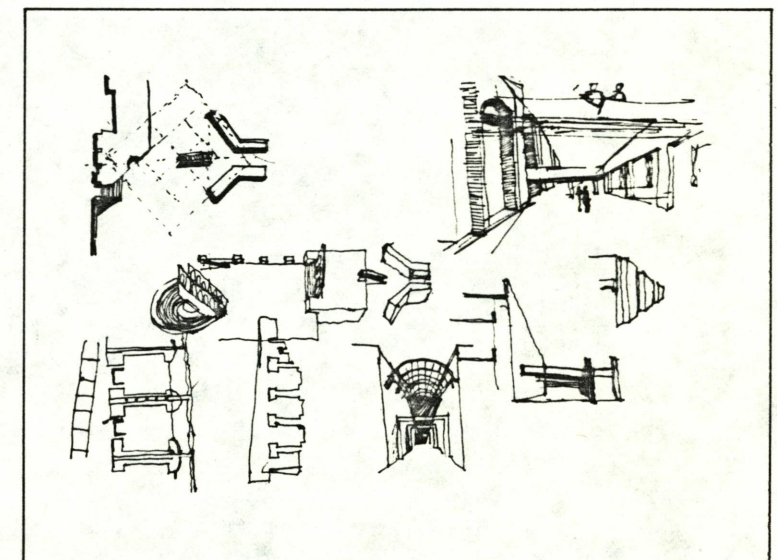
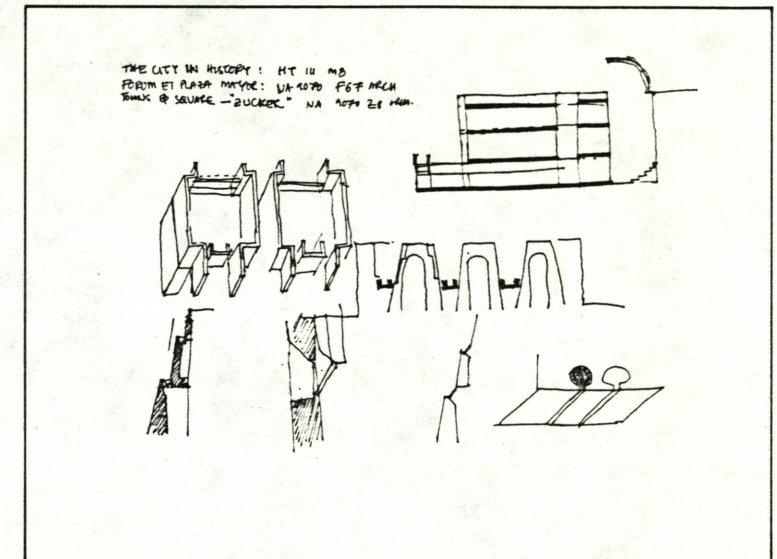
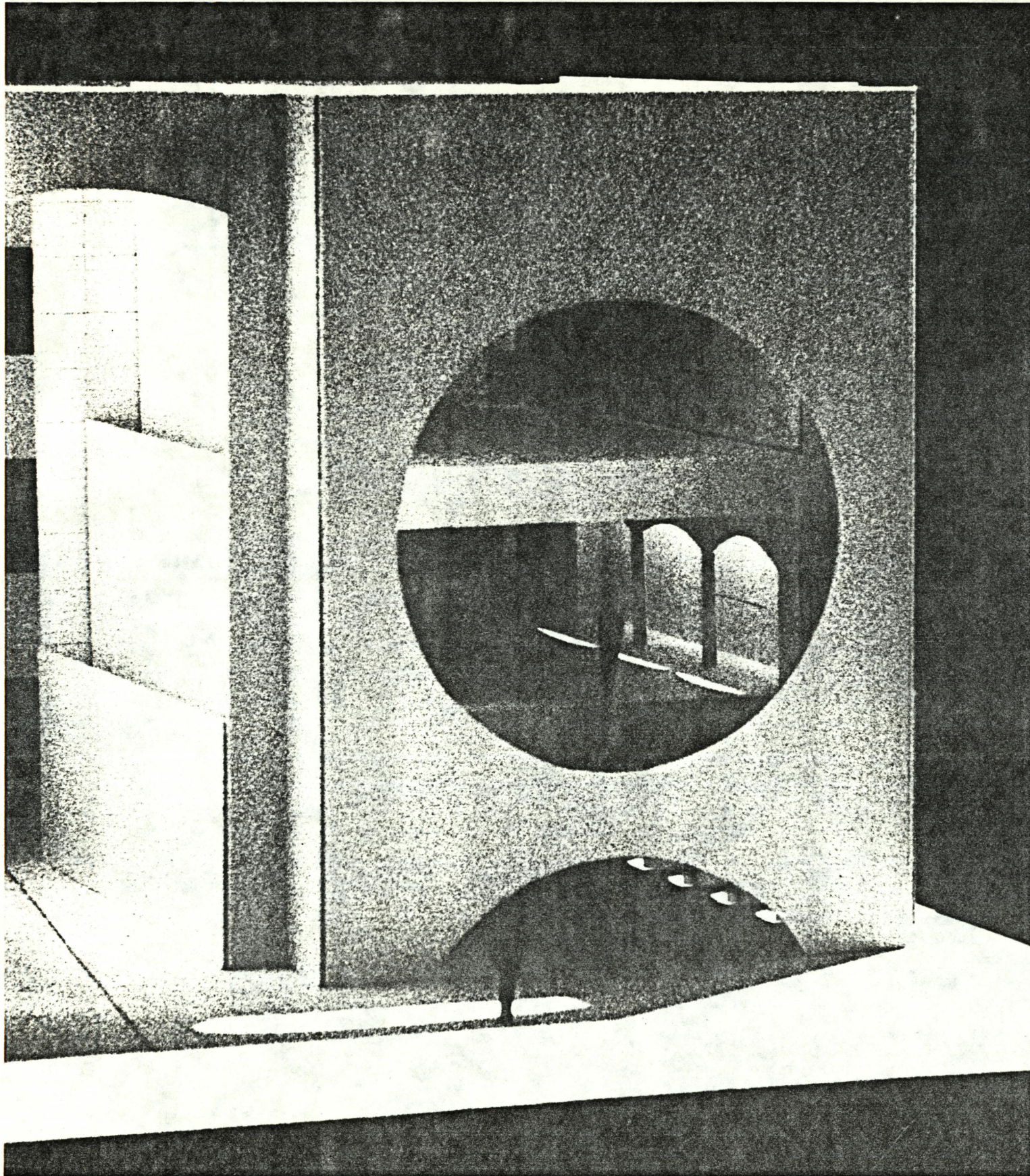
'Back Yard' walls



*Sectional Isometric,
House of Arts*

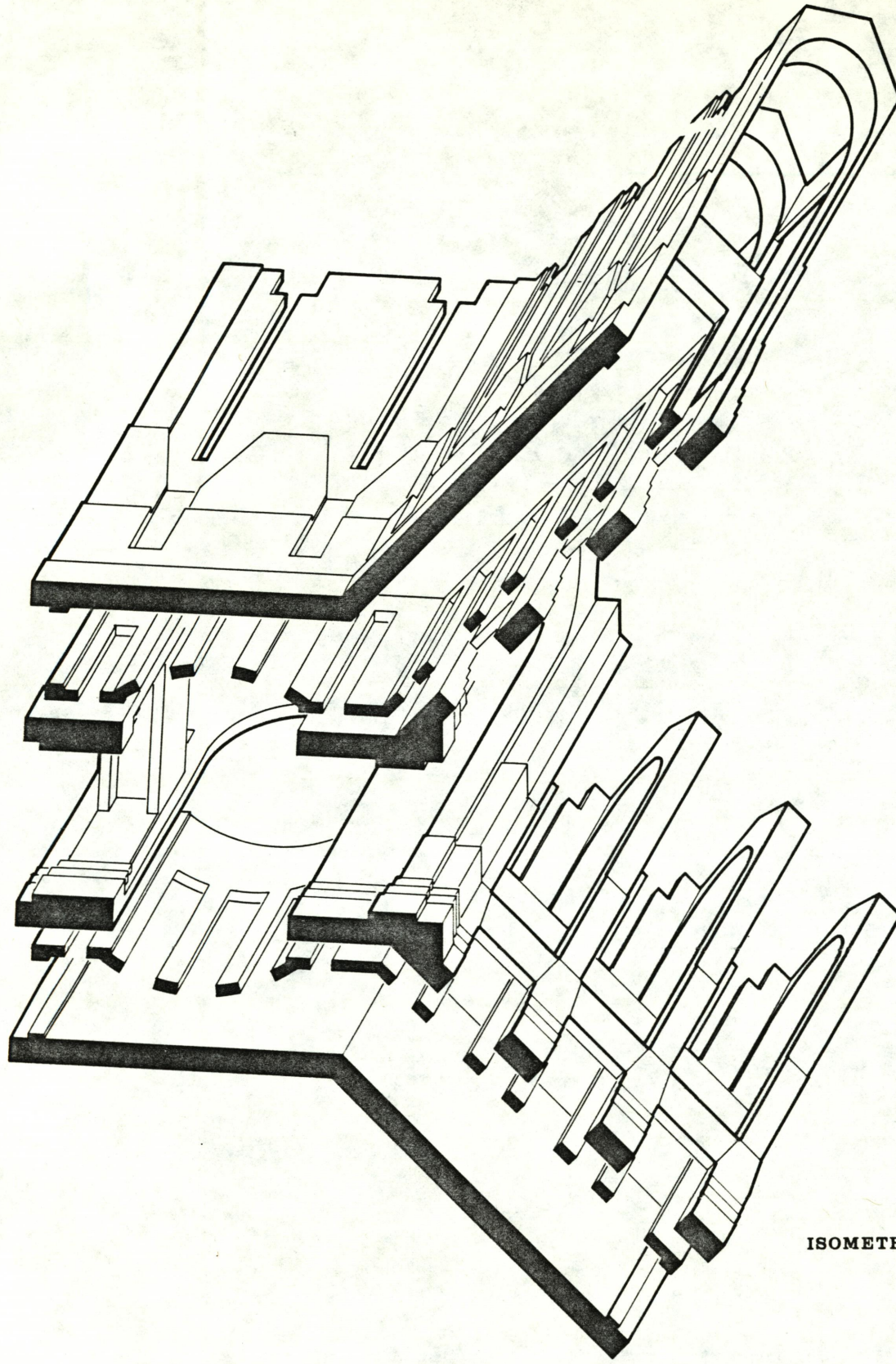


A block of studio floors showing natural lighting indoors

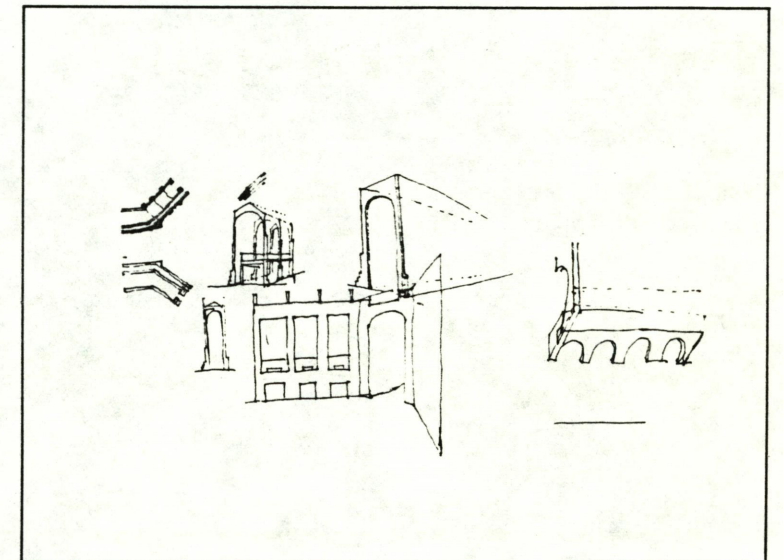


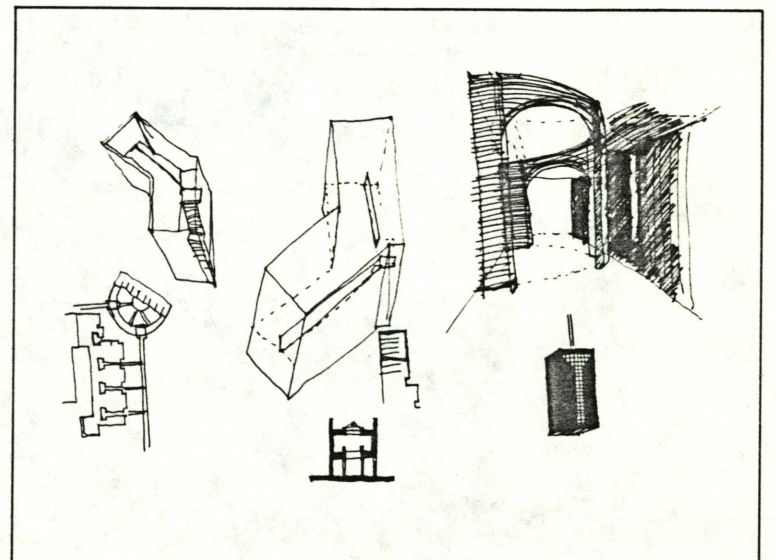
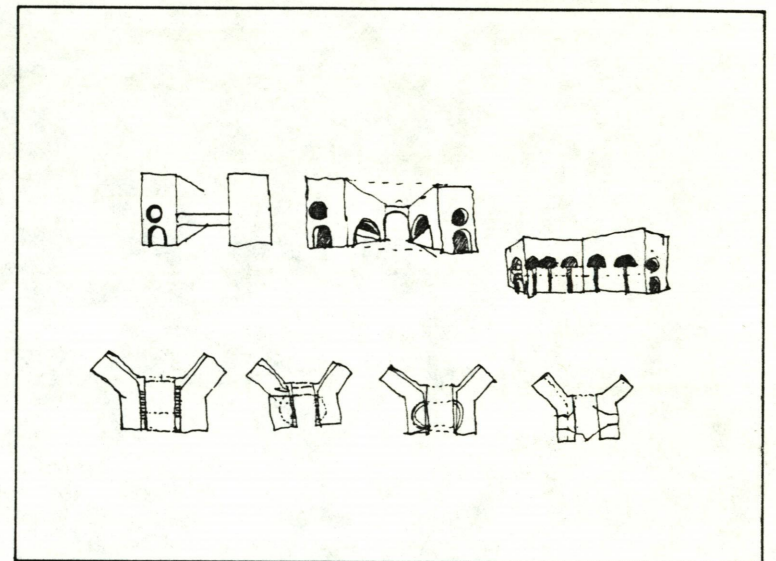
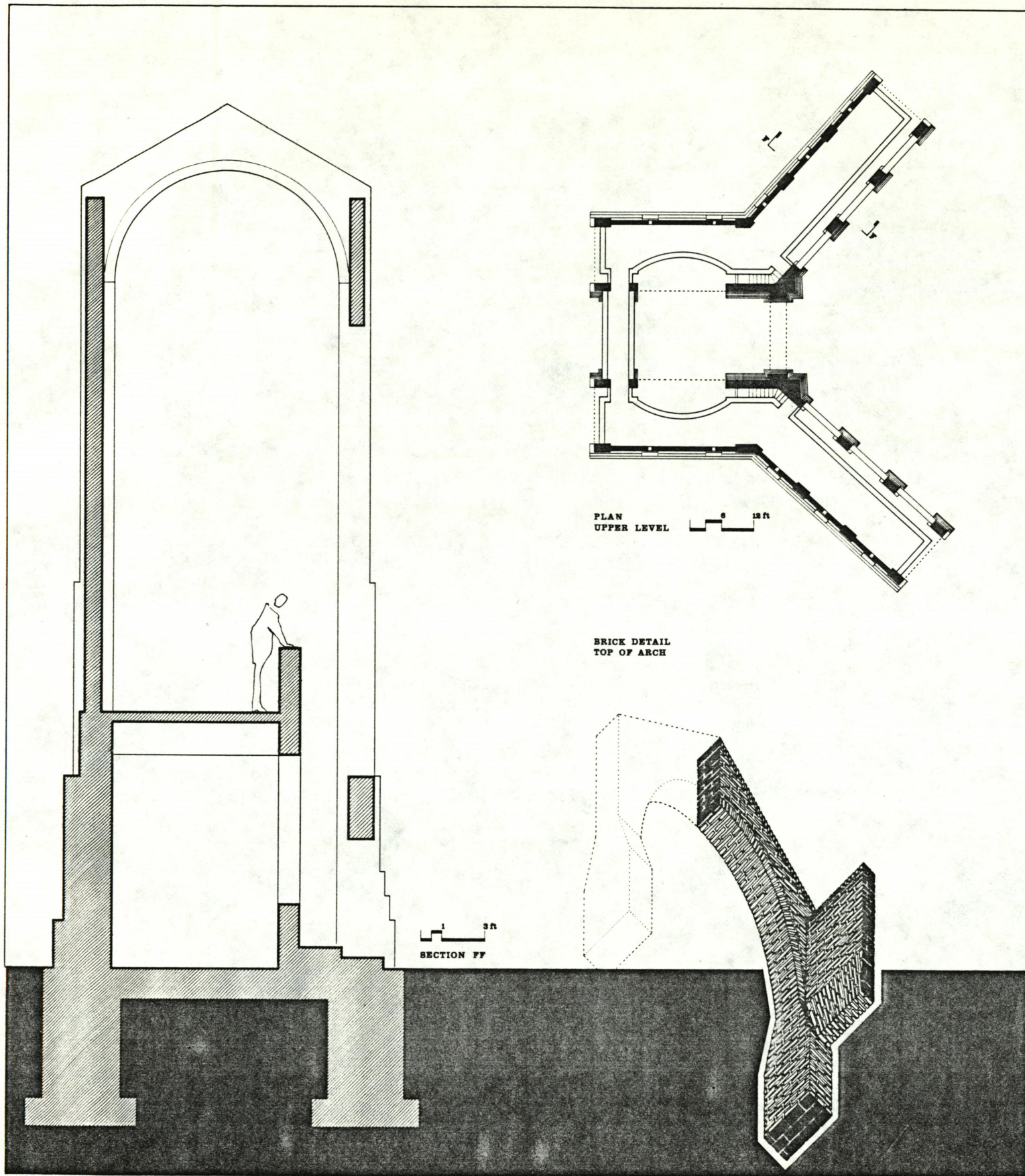
II ELEMENT: GATEWAY

The Gateway is a point of pause before streams of space meet a reservoir of space. It is a window to frame the distant mountains and bring them into an 'urban' plaza. In the Gateway, layers of masonry offer a perfect setting for the play of light, each layer receiving the shadow of the one in front. Here, spaces of various scale provide variety and choice. Above all, it is a structure for the earth and the sky to come together.

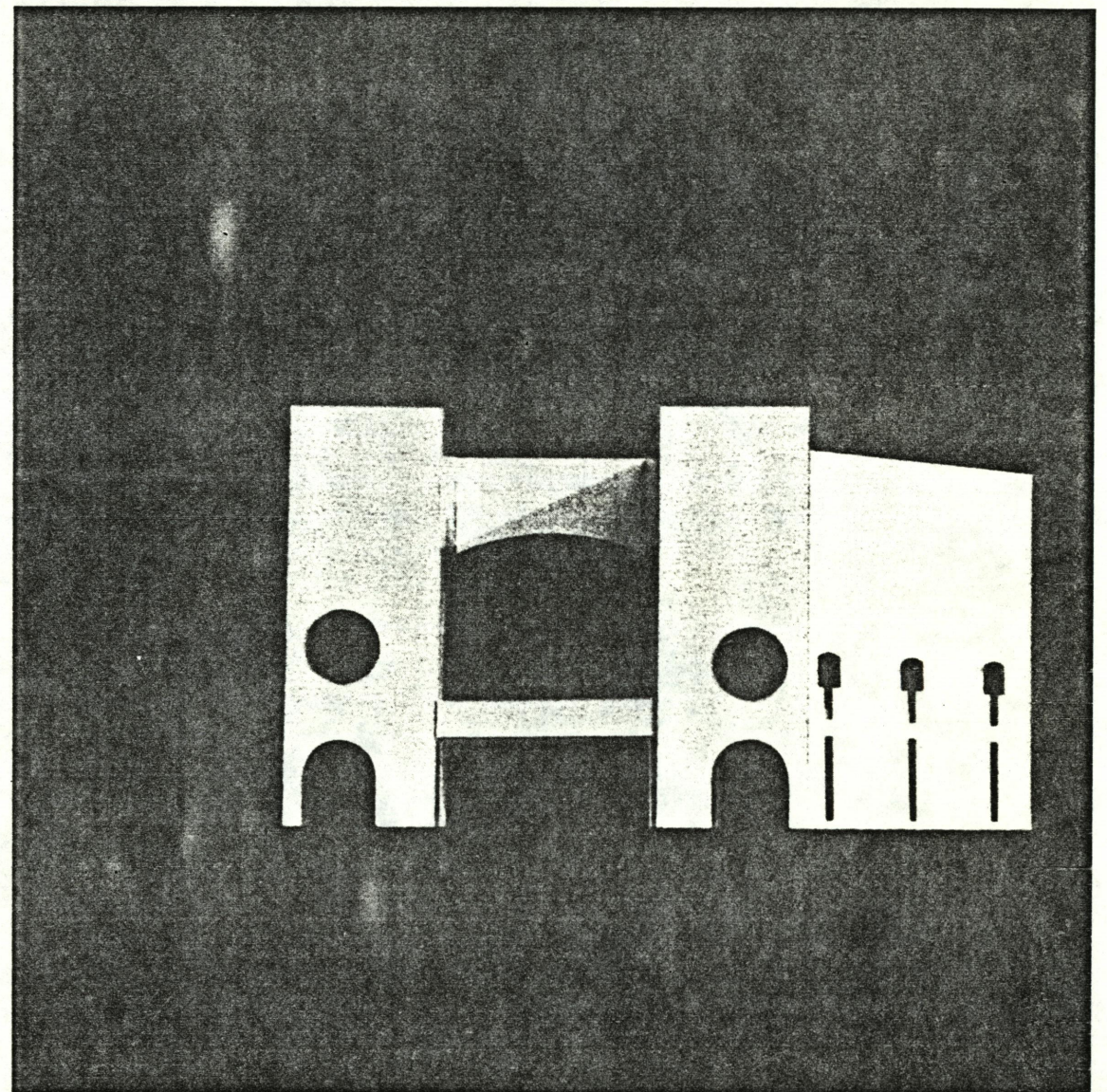
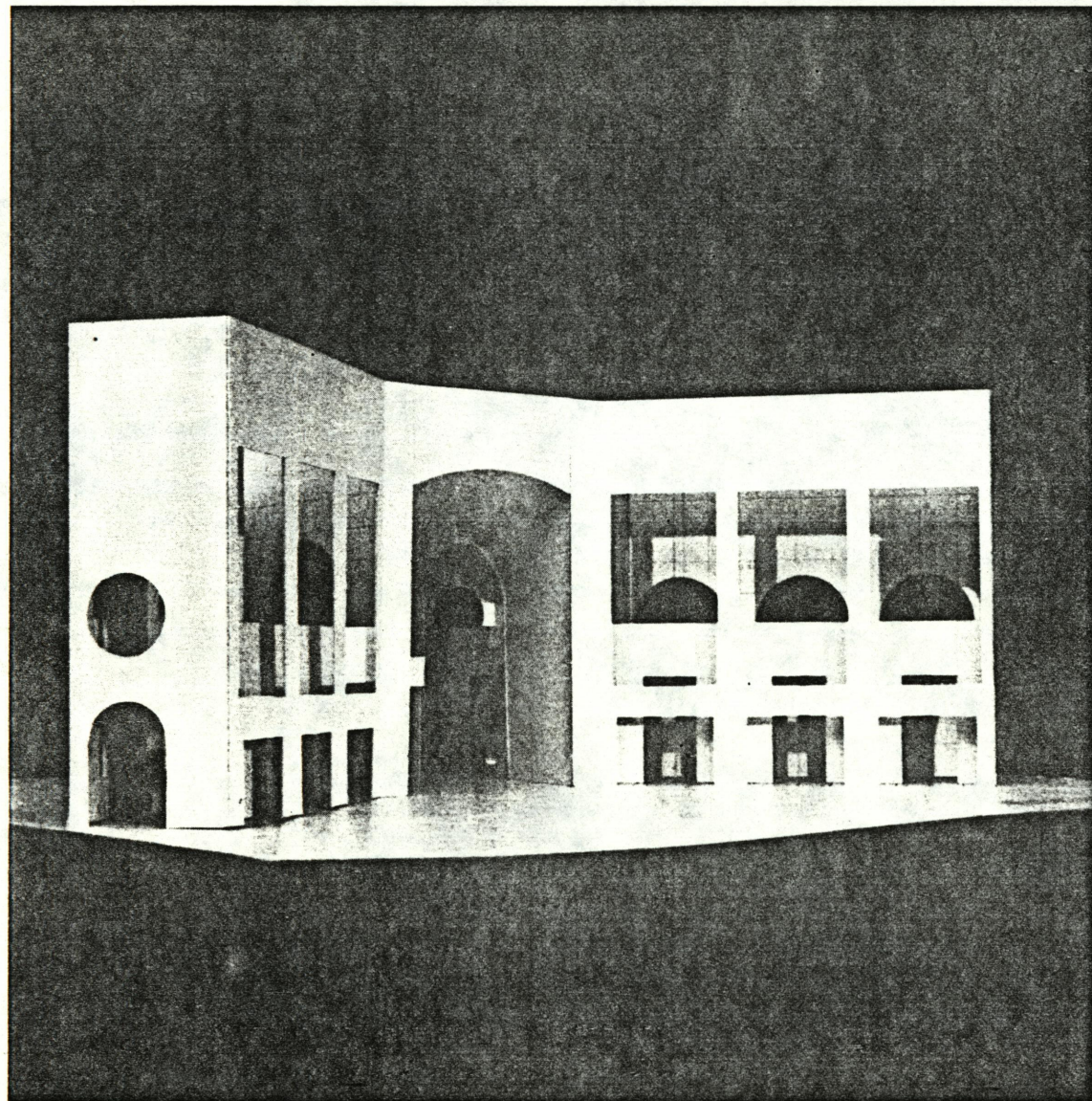


ISOMETRIC





Gateway elevations



III THE PAINTING:

A place for the
life of the village.

Stages in design development:

Stage I:

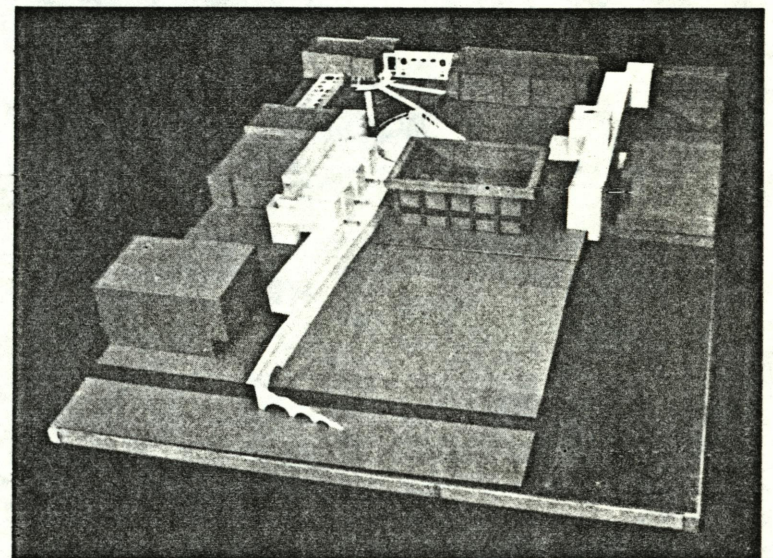
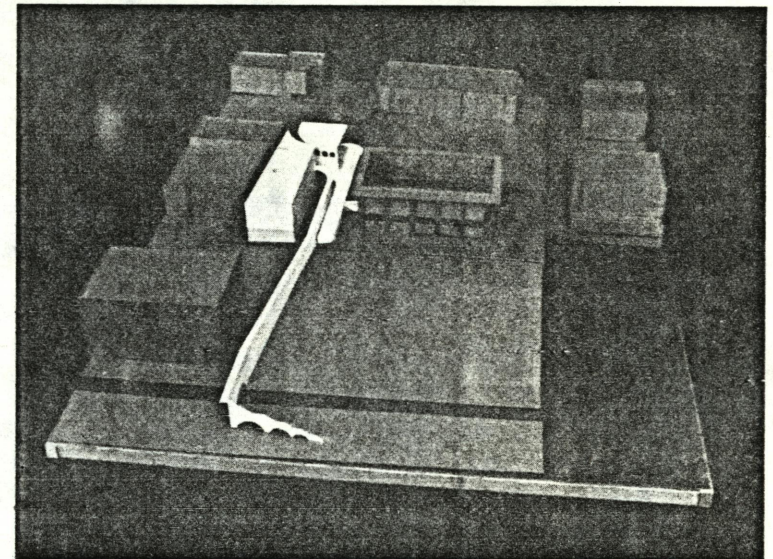
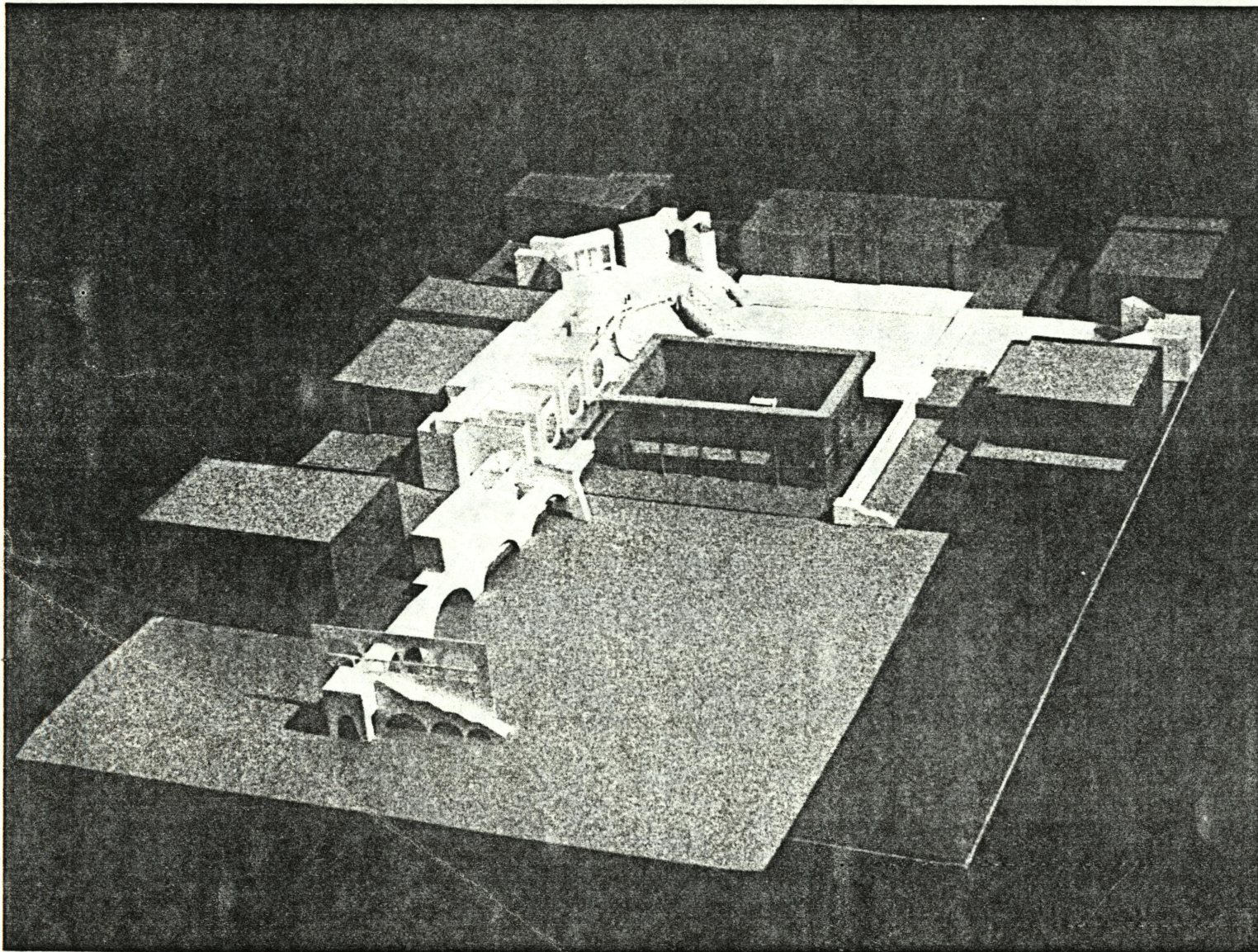
The pathway slices through the House of Arts. The Ampitheatre is part of the House, flowing out into the plaza.

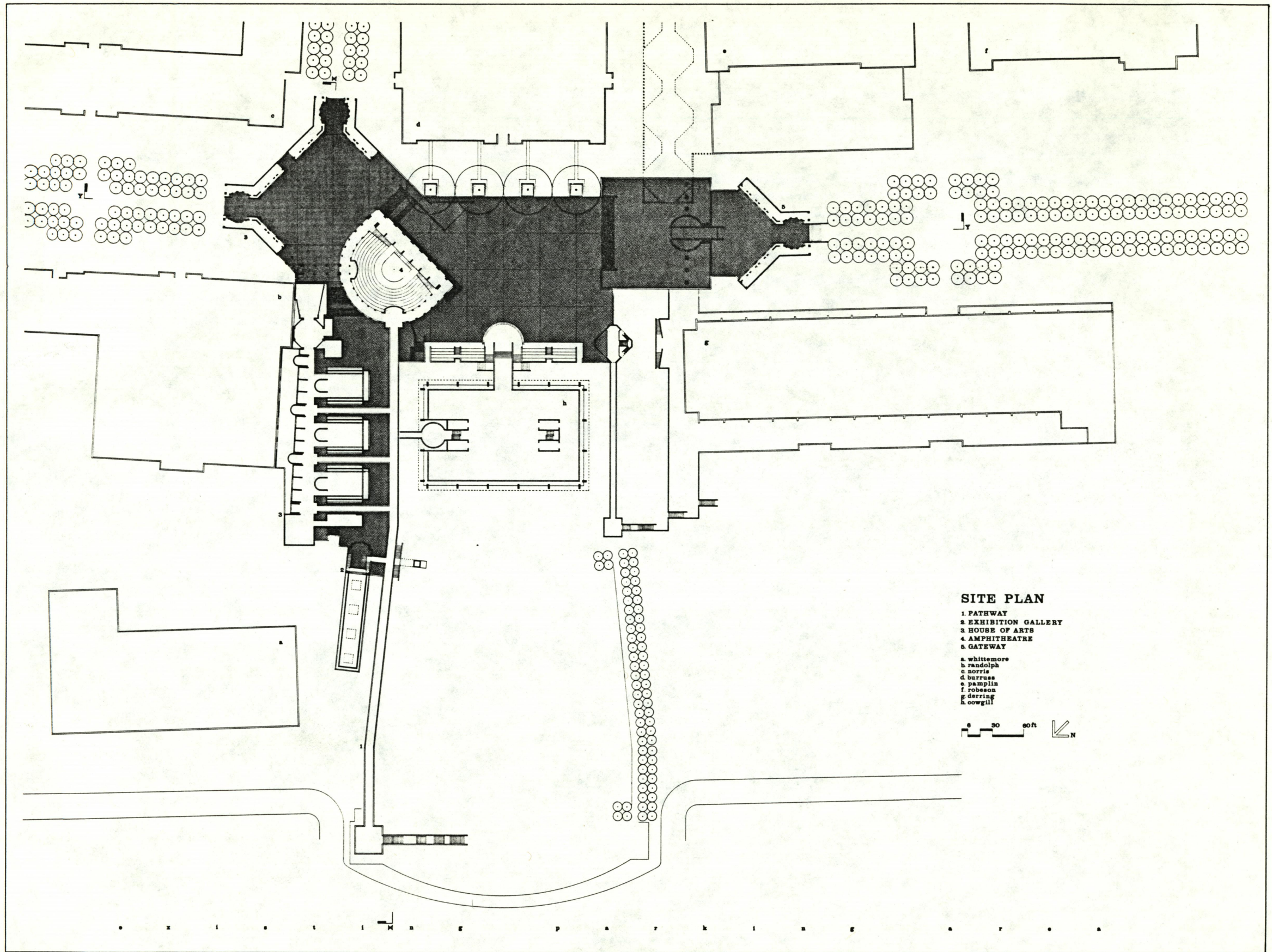
Stage II:

The ampitheatre is independent of the House of Arts, acting as a centre for the design proposal. The House grows from the order of the Pathway. Links between buildings and a student service building create a sense of enclosure.

Stage III:

Gateways give a sense of enclosure and are points of transition in and out of the plaza. A distant place begins to develop where the stair case at the beginning of the Pathway occurs.

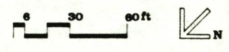




SITE PLAN

- 1. PATHWAY
- 2. EXHIBITION GALLERY
- 3. HOUSE OF ARTS
- 4. AMPHITHEATRE
- 5. GATEWAY

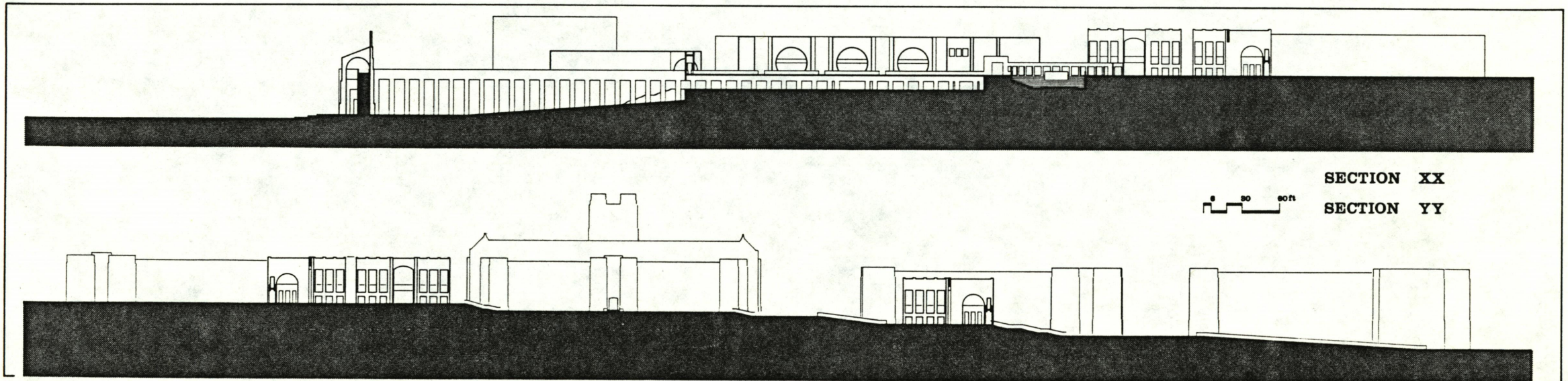
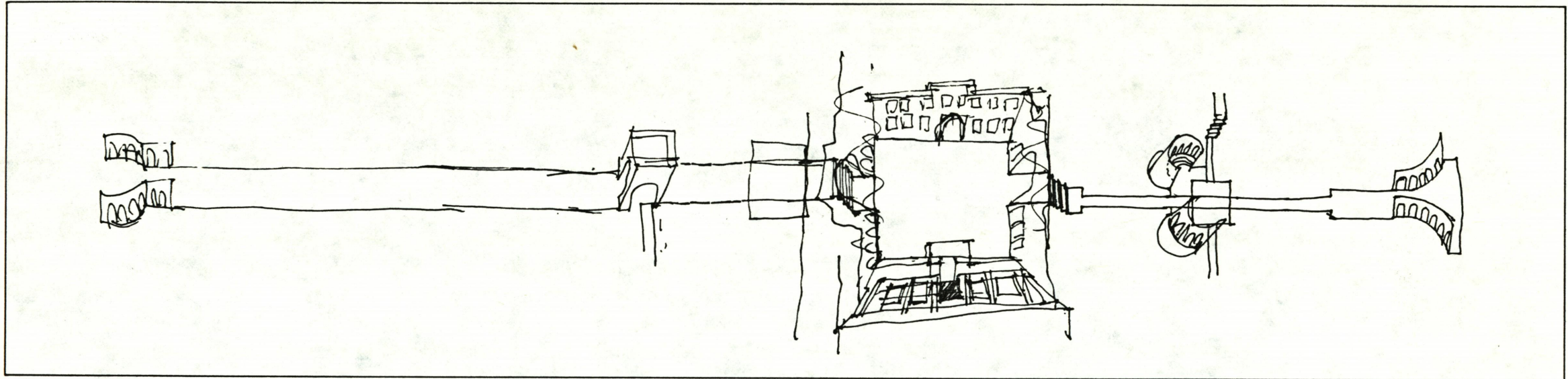
- a. whittemore
- b. randolph
- c. norris
- d. barruss
- e. pamplin
- f. robeson
- g. derring
- h. cowgill



• x i . . i i . . . p . . r . . k . . i . . n . . e . . r . . .

Early sketch:
East-West axis of the project

Sections through the
final proposal



**The vita has been removed from
the scanned document**