



Virginia  
Master  
Naturalist

**Basic Training Course**

**Botany**  
(Introductory Version)

---

*W. John Hayden, Professor, Biology, University of Richmond*



**Virginia Cooperative Extension**  
Virginia Tech • Virginia State University

[www.ext.vt.edu](http://www.ext.vt.edu)

**Publication ANR-12NP**

Produced by Communications and Marketing, College of Agriculture and Life Sciences,  
Virginia Polytechnic Institute and State University, 2013

Virginia Cooperative Extension programs and employment are open to all, regardless of race, color, national origin, sex, religion, age, disability, political beliefs, sexual orientation, genetic information, marital, family, or veteran status, or any other basis protected by law. An equal opportunity/affirmative action employer. Issued in furtherance of Cooperative Extension work, Virginia Polytechnic Institute and State University, Virginia State University, and the U.S. Department of Agriculture cooperating. Edwin J. Jones, Director, Virginia Cooperative Extension, Virginia Tech, Blacksburg; Jewel E. Hairston, Administrator, 1890 Extension Program, Virginia State, Petersburg.

The Virginia Master Naturalist Program is jointly sponsored by:



# Botany

## Diversity and Distribution of Plants in Virginia

### Diversity

Plants can be defined as multicellular photosynthetic organisms with reproductive structures that are more complex than single cells. By this definition, algae are not considered plants because they are either unicellular or their reproductive structures are essentially unicellular, and fungi, too, are excluded because they are not photosynthetic. At least 400 million years of diversification has resulted in a wide diversity of taxonomically distinct major groups of plants. Some of the most important groups of plants found in Virginia are described below.

### Vascular Plants

Vascular plants are internally complex plants with specialized conductive tissues (xylem and phloem).

- Angiosperms, or flowering plants (fig. 1) – Most trees, shrubs and herbs encountered in nature (or in cultivation) belong to this, the youngest—most recently evolved—group of plants. They can be characterized as reproducing by flowers in a process that involves pollen, ovules, and seeds; the ovules develop into seeds while contained within an ovary, which matures into a fruit. There are



Figure 1. Sweet bay magnolia (*Magnolia virginiana*), a flowering plant (Britton and Brown 1913).

approximately 3,500 species of flowering plants that occur spontaneously in the state of Virginia, approximately 25 to 30 percent of which are native to other regions of the world but now live here, too.

- Conifers (fig. 2) – These are the cone-bearing woody plants with scale or needle-like leaves. They also reproduce via pollen, ovules, and seeds, but the ovules and seeds develop as part of a cone organ that leaves the ovules directly exposed to the environment, at least for part of their development. Conifers are thus one group of gymnosperms, literally, plants with “naked seeds.” Other living gymnosperm groups include the cycads, Gnetophytes, and *Ginkgo*; of these, only *Ginkgo*, or maidenhair tree, native to China, is commonly encountered in cultivation in Virginia. There are 22 species of conifer native to Virginia; about a dozen other species can be found in cultivation.

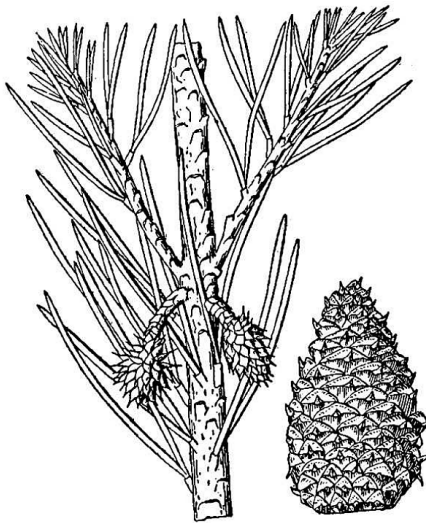


Figure 2. Scrub or Virginia pine (*Pinus virginiana*), a conifer (Britton and Brown 1913).

- Ferns (fig. 3) – Ferns are vascular plants that do not reproduce via pollen, ovules, and seeds. Instead, familiar fern plants make multicellular sporangia that release dust-like unicellular spores. Fern spores grow into a small and easily overlooked gametophyte generation within which

## Objectives

1. Describe the diversity and distribution of plants in Virginia.
2. Describe the role of plants in Virginia’s ecosystems.
3. Describe the natural history and basic biology of plants.
4. Describe the adaptations of plants and how they relate to environmental factors.
5. Describe the taxonomy of plants.
6. Describe the key characteristics used to identify plants.
7. Describe threats and/or issues related to plants in Virginia, such as invasive species.
8. Recognize some common plants occurring in the local ecosystems.
9. Recognize rare or special species that indicate habitat qualities.
10. Understand appropriate techniques and methods for studying plants.



eggs are fertilized by swimming sperm cells. The resulting zygote eventually grows into the familiar fern plant, which represents the sporophyte generation. Horsetails (genus *Equisetum*) (fig. 4) are now classified among the ferns. There are nearly 80 fern species native to Virginia, as well as some 14 naturally occurring hybrids and perhaps 4 naturalized species.



Figure 3. Dissected grape fern (*Sceptridium dissectum*; Britton and Brown 1913).

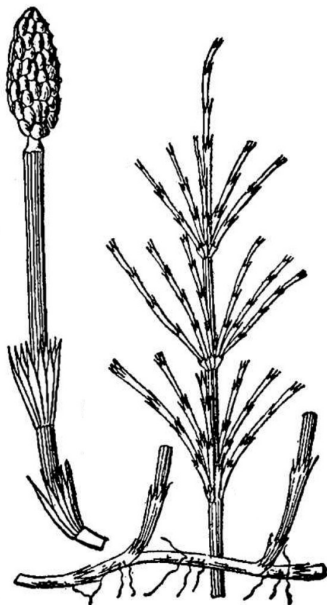


Figure 4. Horsetail (*Equisetum arvense*), now classified among the ferns (Britton and Brown 1913).

- Club mosses (fig. 5) – In general terms, club mosses are reasonably similar to ferns, but they differ in many details: the leaves are smaller, often scale-like, and have just a single unbranched vein; the sporangia are grouped in a cone-like strobilus, and internal tissue layers are

organized differently. Until recently club mosses were classified in a single genus, *Lycopodium*; Virginia has 14 club moss species and four naturally occurring hybrids, now classified in seven genera.



Figure 5. Princess pine (*Dendrolycopodium obscurum*), a club moss (Britton and Brown 1913).

- Spike mosses (fig. 6) – Spike mosses are like delicate club mosses but differ in making two different kinds of spores (heterospory) and by the presence of a microscopic ligule associated with each minute leaf. The two species of spike moss native to Virginia are *Bryodesma rupestre* and *Lycopodioides apodum*.

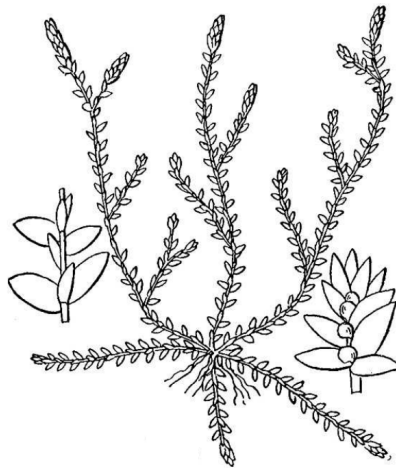


Figure 6. Meadow spikemoss (*Lycopodioides apodum*; Britton and Brown 1913).

- Quillworts (fig. 7) – At first glance quillworts look like a tuft of grass growing in or near water. Although they don't look much like spikemosses, these groups are related as attested by the shared presence of ligules and two types of spores. There

are 11 species and four hybrids of *Isoetes* (quillwort) native to Virginia.

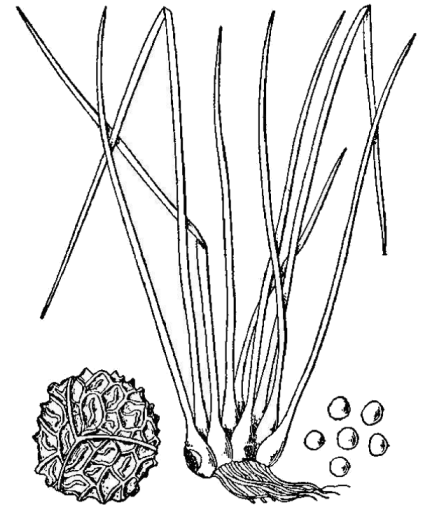


Figure 7. Quillwort (*Isoetes engelmannii*; Britton and Brown 1913).

### Nonvascular Plants

Nonvascular plants have a relatively simple internal organization; neither xylem nor phloem are present.

- Mosses (fig. 8) – Mosses tend to grow in moist places or have the ability to go dormant when dry. The familiar small, leafy moss plant is the gametophyte generation and, periodically, it produces a spore-bearing capsule atop a thin bristle-like stalk.

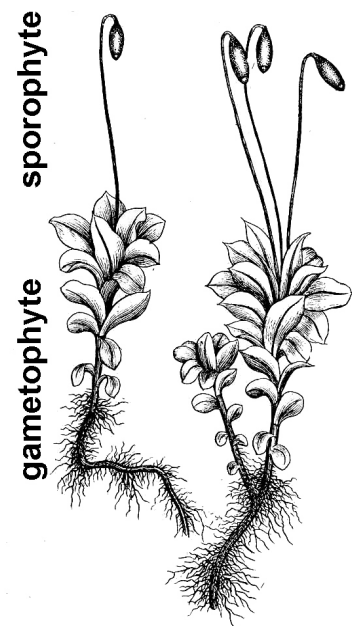


Figure 8. Moss (*Mnium affine*; Grout 1903, text added).

- Hornworts (fig. 9) – These obscure, small plants consist of a sheet-like patch of cells on moist ground that eventually form cylindrical spore-bearing spikes.

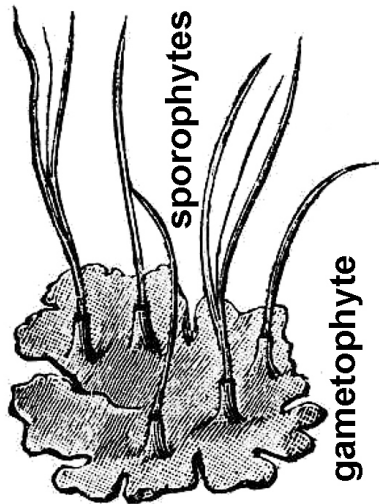


Figure 9. Hornwort (*Anthoceros laevis*; Goebel 1905, text edited).

- Liverworts (fig. 10) – Liverworts generally consist of flat, ribbon-like plants that grow horizontally on moist surfaces but there is one group that superficially resembles a creeping leafy moss plant (these never have a leaf midrib that mosses always have). Like mosses, liverwort plants consist of the gametophyte generation; the spore-bearing structures can resemble those of mosses but differ in detail.

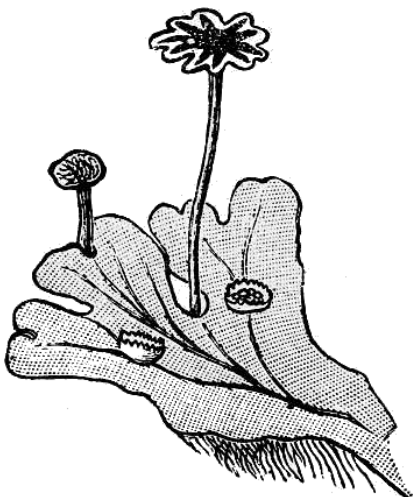


Figure 10. Liverwort (*Marchantia polymorpha*; Goebel 1905).

## Distribution

One of the first things we notice is that plant species are not distributed uniformly in the environment. Some are common and widespread while others are much less frequent or even rare. Plants don't necessarily grow wherever a seed happens to land. Instead, we notice that the same species tend to occupy places with similar environmental conditions: swamp forest, old field, limestone rock outcrop, etc. In other words, every species of plant has its own particular environmental requirements for survival.

A plant can exist in a particular spot only if temperature, moisture, nutrient availability, and interactions with other organisms (to name just a few of these factors) permit its survival. Seldom do the factors controlling plant distribution act in isolation; elevation, for example, is correlated with length of growing season, average daily temperature, and daily extremes in temperature. On Virginia mountaintops, growing seasons are shorter, temperatures are cooler, and day-to-night temperature fluctuations are greater than what a plant would encounter on the shores of Chesapeake Bay.

Geological factors — including the type of bedrock and how it weathers to soil — can influence plant distribution, especially in terms of soil depth, nutrient content, pH, water-holding capacity, and presence (or absence) of heavy metals. As a general rule, limits of tolerance are defined by extreme conditions rather than average values. Thus coldest winter temperature has a greater influence on plant distribution than average winter temperature.

Extreme low winter temperatures vary with latitude and altitude and constitute the basis for the **U.S. Department of Agriculture's plant hardiness zones** — in essence, a system of geographic zones that share similar extreme winter cold temperatures, mapped in 10-degree intervals. Virginia occupies portions of USDA zones 5 (high mountains), 6 (mountains and Shenandoah Valley), 7 (most of the state), and 8 (eastern Tidewater and the Eastern Shore.)

Some plants have very narrow environmental tolerances and other plants are much wider in their adaptability. Some species we would consider generalists, that is they

tolerate a wide variety of conditions allowing them to occupy a diversity of habitats. In terms of plant distribution within Virginia, some species occur essentially throughout the state (and well beyond), for example red maple (*Acer rubrum*) and jack-in-the-pulpit (*Arisaema triphyllum*), whereas others are much more limited in their distribution.

Restricted distributions — as opposed to statewide occurrence — often correlate well with the major physiographic regions of the state. Thus, plants like summer sweet (*Clethra alnifolia*) occur mainly in the coastal plain; *Hexastylis lewisii* is found only in the piedmont (and just the southern portion, at that); and the flame azalea (*Rhododendron calendulaceum*) and rose bay (*R. catawbiense*) are nearly restricted to the mountains.

Other species might only rarely be found outside of a narrow set of conditions and thereby are limited geographically by the frequency of those conditions in the landscape. Virginia sneezeweed (*Helonium virginicum*) — restricted to a few sinkhole ponds in the Shenandoah Valley, and similar habitats in Missouri — is a good example of a rare species with narrow environmental tolerance.

Some plant species widespread to the North reach their southern limit in the mountains of Virginia. Some of these plants (for example, *Potentilla tridentata*) probably reached Virginia from the north while retreating from the advancing Pleistocene glaciers and now persist in the mountains as relicts. Other species widespread in the Southeastern U.S. reach their northern limit in the Tidewater region, where zone 8 climatic conditions prevail.

A major resource for study of plant distribution in the state is the "Digital Atlas of the Virginia Flora" ([www.vaplantatlas.org/](http://www.vaplantatlas.org/)). This website maps the known occurrence, county by county, of all species of vascular plants found in Virginia. Each county occurrence is documented by at least one specimen preserved in a museum (herbarium) collection. For each species included, the Atlas also indicates whether it is a native member of the Virginia flora or whether it has been introduced from elsewhere.

## Climate Change

Climate change has always been an important factor in plant distribution. When climate change brings about unfavorable conditions, plants have two options: adapt/evolve to accommodate the new conditions or migrate (for example, by seed dispersal) to colonize new regions that match their requirements. While it seems clear that some degree of human-induced climate change is occurring or will soon occur, there is no certainty about the rate at which that change will take place or how extreme its full extent will be.

Climate change presents rare plants with especially large challenges. It remains to be seen whether rare plants have sufficient genetic diversity to adapt in place or whether they can produce enough seeds to colonize efficiently favorable sites for growth in a changing landscape.

Most commonly, we associate plant species with specific soil types or substrates, certain hydrological conditions, sun or shade, and disturbed or undisturbed conditions. The degree to which a species adheres to these parameters varies, of course, across the full spectrum. As a consequence, the patterns that emerge are complex and tend to be fuzzy.

Observations of a species over its whole geographic range help to develop a concept of its “preferred” habitat. These observations will often include common associates, other species occupying the same or similar environmental conditions. These associations along with their defining environmental parameters may be recognized on a landscape scale as **plant communities**. Communities that are not greatly affected by activities of man we call **natural communities**. The process of delimiting and classifying natural communities is an ongoing process, but Virginia is fortunate to have an excellent resource in “The Natural Communities of Virginia” (see Additional Resources), which provides descriptions as well as typical or defining plant species for each community type. Because plants are typically the most conspicuous and stable biotic component of a natural community, they are important in describing and characterizing it.

In the same way that plant species vary in the abundance in the landscape, so also, natural communities vary in their frequency. To choose an example familiar to nearly everyone, let’s consider a coastal beach or strand. The physical parameters in this case frame a rather extreme and harsh environment for most plant species. The substrate is sand, loose and shifting by the action of wind and waves, creating a naturally disturbed and unstable habitat. Saltwater and salt spray require special adaptations for water uptake and to prevent desiccation.

The leaves of a plant from the coastal strand community are often succulent or tough and in-rolled. The open, windy conditions favor the wind-pollinated grasses such as sea oats (*Uniola paniculata*), beach grass (*Ammophila breviligulata*), and salt-marsh cordgrass (*Spartina patens*). On the beach we find searocket (*Cakile edentula*) and Carolina saltwort (*Salsola caroliniana*). In one sense, the habitat is rare in that it is limited to the near-shore environment, but geographically it is widespread and many of its plant components range all the way up and down the East Coast and well beyond.

## Role of Plants in Virginia Ecosystems

The ecological roles of plants are many. Plants comprise the base of the **food chain**. The vast majority of plants are **photosynthetic**: via a complicated series of reactions, they use sunlight to synthesize sugar from carbon dioxide and water. These sugar molecules provide both the energy and chemical starting material for plant metabolism and growth. In essence, plants make their own food; therefore, in ecological terms, they are often characterized as **autotrophic** (literally, self-feeding).

In most familiar ecosystems, plants ultimately provide the food consumed by all other organisms: **Herbivores** eat plants, and **carnivores** eat the herbivores that once ate plants. And when plants die, or shed dead leaves or flakes of bark, etc., microorganisms (e.g., bacteria and fungi) derive their sustenance from these once living plants or plant parts.

Plants require more than water and carbon dioxide to survive, however. Plant roots absorb up to 14 different elements from the soil and incorporate them into the biochemistry of their cells. Other forms of life require these elements, too, and ultimately these elements enter the **biosphere** largely by way of plants.

Finally, it is of vital importance that plants release oxygen as a byproduct of the photosynthetic process. Ultimately, every breath we take, every breath of every animal, and every passage of water over gills, serves to deliver life-giving oxygen made and continually renewed by plants. In summary, plant photosynthesis captures energy and builds nutritious tissues that eventually feed all other organisms and in doing so plants also release oxygen upon which the efficient utilization of that food energy depends for plants and animals and human beings, too.

Plant life defines ecological communities. Forest, marsh, meadow, and bog are recognizably distinct in large part because of the nature of their plant life. The presence of certain plants, the absence of others, determine not only the overall appearance of any given habitat, plants also dictate much about the availability of food, nesting sites, and hiding places for animals. Plants create multiple **niches** within any given community; consider for example the different environmental aspects exploited by animals that live in a forest canopy versus those that occupy the forest floor or those that burrow into the soil and live among the roots of trees.

## Natural History and Basic Biology of Plants

While plants and animals share a great many fundamental aspects of their biology, they also differ in profound ways. Perhaps one of the most obvious differences is that plants are **sessile (nonmotile)** because their roots anchor them. In contrast, many animals are capable of **locomotion**. While animals appear active, dynamic, and engaged in all manner of fascinating behaviors, plants seem static and nonchanging on first impression.

That impression, of course, is an artifact of our perception of time. Plants are dynamic, they do undergo growth and change, but their rates of change are usually too slow for impatient humans to take much notice.

Nevertheless, it is common knowledge that an apple tree will be leafless in winter, covered in flowers in early spring, leafy all summer, and bear delicious ripe apples in the fall. These seasonal transformations are profound and, further, as the years go by, that apple tree greatly increases its size, far surpassing the growth capacity of most animals. Plants are, indeed, dynamic!

Familiar terrestrial animals have a determinate body plan; after birth or hatching, they grow to a certain size and attain a stereotyped form characteristic of their particular species. All monarch butterflies are very nearly the same size and they all have six legs and four wings, etc.

Plants, on the other hand, have an **indeterminate body plan**; their overall size and growth form depend to a large degree on age, the environment, and chance factors. No two maple trees in a forest will have exactly the same height, trunk diameter, or number of branches, even if they happen to be of the same age. Plants may continue growing over extended periods of time — years, decades, centuries, or millennia — depending on the plant species.

## Reproduction

Despite their sedentary nature, populations of plants are capable of dispersal and migration across the landscape, but usually in the form of **seeds**, seed-bearing **fruits**, or **spores** (in the case of mosses, ferns and similar plants), not by migration of individual mature plants! Again, it is useful to think about plant dispersal in relatively long time frames as generation after generation of a particular species disperses its seeds. Of course, large jumps covering vast distances, though rare, can happen—consider the native plants of Hawaii that reached that oceanic island via long-distance dispersal.

Seeds are fundamental to reproduction of many plants, and reproduction is one of the general characteristics of all living things. There are certain similarities about the

nature of sexual reproduction in plants and animals, but there are also some profound differences.

At its core, sexual reproduction involves processes that deliver portions of the genetic characteristics of both parents to their offspring while also subtly altering how those characteristics are combined in successive offspring. This shuffling of genetic characteristics between generations occurs essentially the same way in plants and animals and depends upon the process of **meiosis** leading to **gamete** (**sperm** and **egg**) formation coupled with the random combination of gametes to form the new generation. In animals, gamete formation follows directly from meiosis whereas in plants there are a number of intervening stages, the details of which involve **pollen** as the male component of sexual reproduction and structures inside **ovules** that function as the female counterpart. Pollen releases sperm cells that fertilize eggs located inside the ovule; from that union arises the **embryo**, an immature plantlet located inside the **seed**.

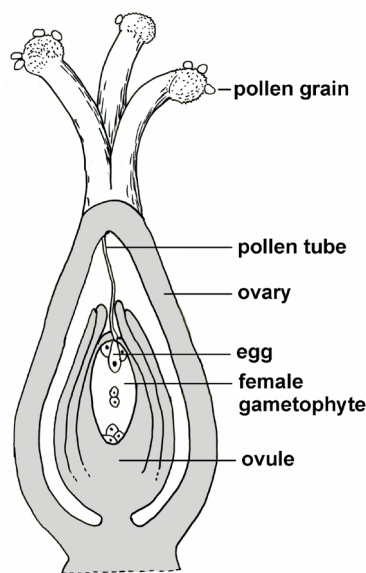


Figure 11. Flower internal structures: reproductive structures inside a flower. Pollen grains and pollen tubes constitute male structures. Pollen tubes deliver sperm cells to eggs. Ovules contain the female structures, including the female gamete or egg. After the flowering stage, ovaries become fruits, and ovules become seeds that include new plants in embryo form (Gray 1868).

## Physiology

One of the subtle differences between plants and animals has to do with **nitrogen**

**metabolism**. In general, animals are relatively limited in their biochemical capacity to process molecules containing nitrogen. Consequently, animals generate significant amounts of nitrogen-based waste products that must be excreted, either as ammonia, urea, or uric acid.

Plants, in contrast, are much more versatile in their biochemical repertoire concerning nitrogen compounds. In essence, plant cells can recycle nitrogen-containing compounds more or less indefinitely. Consequently, because plants consume no bulky food-stuffs the way animals do and because they generate no nitrogenous wastes, plants have no real excretory system. Nor do they have any specialized cells directly comparable to the muscles and nerves of animals. A few plants (e.g. the Venus flytrap) are capable of rapid leaf movements, but the resemblance to nerves and muscles is only rudimentary. There are no synapses, and rapid leaf movements are always driven by abrupt changes in **turgor pressure** (intracellular water pressure), not contraction of muscle fibers.

The complementary nature of **gas exchange** in plants and animals is widely appreciated. Plants use **carbon dioxide** as a raw material for photosynthesis, yielding **oxygen** as a byproduct; animals inhale oxygen and use it to break down food molecules to yield energy (via **cell respiration**), releasing carbon dioxide as a byproduct.

It is somewhat less well-known that plant cells also perform a nearly identical process of cell respiration — burning food molecules, consuming oxygen, and releasing carbon dioxide. A healthy and actively growing plant during the daytime, however, does more photosynthesis than cell respiration and thus releases more oxygen than it consumes. At night, of course, there is no photosynthesis and cell respiration with its “animal-like” gas exchange process predominates.

Photosynthetic algae, though technically not plants, are biochemically similar. Hence the paradoxical situation of photosynthetic algae being responsible for depletion of oxygen from the water column can be readily understood, especially when undergoing a population explosion known as an algal bloom. During such conditions, all the algal

cells are consuming oxygen at night and the masses of dead and dying cells and the microbes that are busy decomposing them are consuming oxygen all the time.

## Growth

Plants grow by means of special structures called **meristems**. A meristem is a group or layer of cells that has a long-term capacity to undergo the process of **cell division**; thus, meristems add new cells to the body of the plant. It is the nature of plant growth that new cells (organized as stems, leaves, or roots) are continuously added to the plant body.

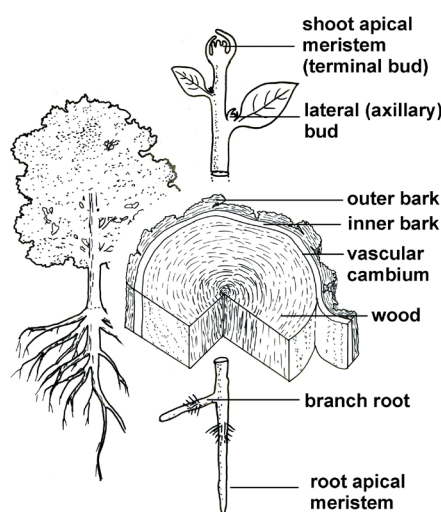


Figure 12. Meristems and plant growth. Shoot and root apical meristems, responsible for primary (extension) growth, are located at the extremities of the shoot and root systems. Lateral (axillary) buds are meristems that produce branch stems. Branch roots originate from inside young roots at some short distance from its apex. The vascular cambium increases stem and root diameter by adding cells to wood and inner bark. Cork cambium, located at the junction of inner and outer bark, adds cells to the outer bark. Figure by author.

Most plants have meristems located at the tips of stems and at the tips of roots. These **apical meristems** are responsible for **primary growth** — the elongation of roots and shoots. Woody plants have additional meristems responsible for **secondary growth**, or growth in thickness by producing **wood**, the **inner or living bark**, and the **outer bark**.

## Hormones

Many details of plant growth are regulated at the biochemical level by molecules

known as **hormones**. Typically, a hormone is a molecule that is present in small quantities but exerts large, easily observed effects as it influences the pattern of growth. Several different plant hormones regulate plant growth and development. For example, many plants experience a springtime surge in the production of **auxin**, a hormone with multiple influences on growth and development. This auxin surge stimulates the activity of plant meristems, thus initiating a new season of growth.

Auxin also affects the response of stems and roots to aspects of the environment such as light, gravity, and touch. For example, stems typically grow towards bright sources of light because excess amounts of auxin accumulate on the shaded side of a stem, causing cells on the shaded side to elongate more than those on the sunny side, resulting in a gradual bending of the stem in the direction of the light.

## Nutrients

Plant growth is fueled by photosynthesis and the uptake of water and mineral nutrients from the soil. Water and dissolved minerals are absorbed from the soil by roots and transported through the plant by the water-conducting system or **xylem** tissue.

The three most important nutrient elements include:

1. **Nitrogen (N)** – Essential for building proteins, nucleic acids like DNA, and energy-processing molecules.
2. **Phosphorus (P)** – Also essential for nucleic acids and energy-processing molecules.
3. **Potassium (K)** – Important in many enzymatic reactions and for maintenance of proper ionic balance in cells.

The importance of these three elements — N, P, and K — is illustrated by the fact that these are the components of commercial plant fertilizers. Other important nutrients are **calcium**, **iron**, and **magnesium**.

Though also essential, **micronutrients** required in small amounts by plants

include boron, manganese, nickel, copper, zinc, molybdenum, and chlorine.

When present in appropriate amounts, plants generally can absorb mineral nutrients directly from the soil. However, it is not unusual for some elements to be scarce in the soil, and certain plants have developed **symbiotic relationships** with various microbes to assist in nutrient procurement. For example, **legumes** and a few other plants harbor bacteria that are capable of performing **nitrogen fixation** — the conversion of nitrogen gas from the air into ammonia. Whereas nitrogen gas is completely inert to plant and animal cells, ammonia is readily incorporated into other organic molecules. In general, symbiotic nitrogen fixation involves the plant feeding sugars to the bacterium and providing an oxygen-free space for the bacterium to live. In return, the bacterium allows the plant to absorb some of the ammonia it produces. In the case of legumes, nitrogen-fixing bacteria live in tight little knots of cells known as **root nodules**.

**Mycorrhizae** represent another widespread nutrient-procurement symbiosis. Mycorrhizae, literally “fungus-roots,” represent close associations of plant root and fungal cells. Again, the plant feeds the fungus with sugars produced via photosynthesis. In return, the fungus provides the plant with a wide range of mineral nutrients that it obtains from the decomposition of dead organic matter elsewhere in the soil. Mycorrhizal associations are extremely widespread.

## Transport via Phloem and Xylem

**Phloem** tissue in vascular plants transports sugar that is made by photosynthesis to actively growing parts of the plant. In woody stems, phloem constitutes the inner or living bark.

**Xylem** tissue transports water from the soil to the stems and leaves of a plant. It also transports dissolved mineral nutrients taken up from the soil. In addition, xylem tissue provides a strong structural framework inside the plant body. The cell walls of xylem tissue cells contain appreciable amounts of **lignin**, rendering them hard and physically strong. Wood is xylem, and its role in providing mechanical strength



to trees is obvious. However, much smaller strands of xylem penetrate the finest twigs, stems, and leaves where their structural properties are no less important.

## Flowering

Growth and development in plants is often coordinated with environmental signals so that phases of active growth, reproduction, and dormancy occur at the appropriate season. The most important environmental signals are seasonal fluctuations in temperature and the relative length of daylight and night, also known as **photoperiodism**. Many plants use the seasonal changes in photoperiod as a cue to initiate flowering.

**Long-day plants** flower when the **photoperiod** (daylight hours) exceeds some genetically determined threshold value; typically, long-day plants in Virginia flower in the summer. **Short-day plants** flower when the photoperiod is less than some genetically determined threshold value. In Virginia, short-day plants may flower in the spring or fall. In so-called day-neutral plants, flowering is not influenced by photoperiod; these plants may flower in any season once they are sufficiently mature and if the weather permits.

## Dormancy

Successful flowering results in the formation of a crop of seeds. In the temperate zone, many seeds mature and disperse with the embryo in a dormant condition. Depending on the species, germination may require rehydration of a desiccated seed, physical wearing away of a tough seed coat, temporary exposure to cold temperatures, or even a drastic alteration of the environment, such as a fire. Because release from dormancy can be slow, viable but dormant seeds can accumulate in the soil and constitute what is known as a **seed bank**. The longevity of seeds in soil seed banks varies tremendously with the type of plant and the physical conditions of the soil. Certainly, survival for many years is possible.

Toward the end of the growing season, many plants undergo processes to prepare for dormancy through the winter season. For example, food reserves are transported to the root system or to underground

stems for safe storage. Both primary and secondary growth stops and shoot apical meristems become covered with protective **bud scales**.

Finally, many plants undergo leaf drop or **abscission** as one strategy for surviving via dormancy. Many dormancy-inducing phenomena are controlled by the plant hormones **ethylene** and/or **abscissic acid**. In the case of leaf abscission, auxin also plays a role. Vigorous, healthy leaves generate an auxin supply that inhibits leaf abscission; as the plant enters dormancy, auxin production wanes and the effects of ethylene and/or abscissic acid predominate.

This shift in hormones causes changes in a zone of cells (**abscission zone**) located at the point of petiole attachment to the stem. These cells become weak and eventually the leaf falls away, leaving behind another layer of newly exposed cells, the **leaf scar**. Plants that drop their leaves in the autumn are termed **deciduous**. **Evergreen** plants retain their leaves through the winter; nevertheless, their level of biochemical activity is greatly diminished during periods of low temperature so they, too, can be considered at least somewhat winter dormant.

## Adaptations of Plants to Environmental Factors

### Water

Among the myriad forms of plants are a number of common themes that illustrate adaptations to environmental factors. For example, availability of water varies tremendously across the environment, and different plants have various strategies that permit survival in conditions ranging from very wet to very dry.

Most terrestrial habitats in Virginia can be considered **mesic**, with moderate moisture availability. While plants in mesic environments often have adequate water supplies, they still have some water-saving adaptations — such as a moderately thick **cuticle** and **stomata** (surface pores) — that are open only during daylight hours.

Environments that experience frequent dry conditions are described as **xeric**. In Virginia, xeric environments are encountered

where soil conditions are such that rainwater quickly evaporates or runs off, resulting in stressfully dry conditions. Common xeric environments include rocky cliffs and ledges with small bits of soil in pockets or crevices, talus slopes composed of loose stones and gravel, and coastal sand dunes. Plants in these conditions may exhibit various water-conserving adaptations, such as thick cuticles, **succulent** leaves, and **stomata** that are sunken below the leaf surface to slow the rate of water loss.

Wetland environments may be characterized as **hydric**. Wetland plants usually have plenty of water, so cuticle layers tend to be thin and stomata tend to be abundant and well-exposed.

However, the presence of abundant water provides other challenges. For example, waterlogged soils often lack oxygen, yet the cells of plant roots require oxygen to stay alive. In many wetland plants, there are internal tissues with air pockets and passageways that serve as a sort of internal ventilation system. In water lilies, for example, air flows from mature leaves down to the stems located in the mud and back out the young leaves — all through these spongy tissues.

### Pollination

The diverse forms of flowers often prove to be adaptations to facilitate pollination.

- ♦ **Wind-pollinated flowers** tend to be stripped to the essentials: pollen-bearing stamens, often produced in abundance, and large, feathery, pollen-catching stigmas. Floral visitors are not needed, so both showy petals and nectar-producing structures are absent.
- ♦ **Flowers pollinated by animals** typically have attractive features that serve to catch the animal's attention and orient its behavior to the flower. Attractive features may be visual, such as bright, nongreen petals, or they may be chemical fragrances wafted into the air.
- ♦ Bees see well in the blue and ultraviolet end of the light spectrum. Consequently, the petals of **bee-pollinated flowers** are often shades of blue, purple, or violet, and they often bear patterns of lines or

spots called **nectar guides** that direct the bee to the center of the flower. These flowers reward the bees by providing nectar and excess pollen that the bees collect to support their growth. Many bee-pollinated flowers will release a shower of pollen in response to the bee's "buzz" behavior as it pushes into the flower to reach the nectar.

- Hummingbirds see well in the red end of the spectrum, and red is a common color found in many **hummingbird-pollinated flowers**. Hummingbirds have very high metabolic rates, and hummingbird-pollinated flowers provide abundant sweet nectar as their pollinator reward. The nectar is often located near the bottom of long, tubular corollas the humming bird can reach via its long beak and tongue. Stamens and stigmas are typically oriented to brush against the hummingbird's head in order to bring about pollen transfer.
- Butterfly-adapted flowers are similar to those pollinated by hummingbirds in terms of their petal color and their nectar production and location, which the butterflies reach via their long coiled mouthparts.
- Moths have mouthparts similar to butterflies so **moth-pollinated flowers** also tend to be tubular and produce nectar rewards. Because most moths are active at night, moth-pollinated flowers tend to have pale or white petals that show up in dim light and they often emit fragrances that the moths can detect from long distances.

### Seed Dispersal

In seed plants, pollination leads directly to the formation of a crop of seeds contained in cones of conifers or fruits of angiosperms. In some plants, there is scarcely any dispersal of seeds; they merely drop passively from the parent plants. Many plants, however, possess adaptations that promote the dispersal of these seeds away from the parent plant. These adaptations include wing- or plume-like structures to help seeds disperse on the wind (as in dandelions or maples), fleshy fruits that are attractive to animals, and seeds with spines or bristles that are adapted for dispersal by

"hitch-hiking" on fur, feathers, or the clothing of human beings.

## Taxonomy of Plants

### Classifications of Plants Change Over Time

Major taxonomic categories of vascular plants are described below. Angiosperms (flowering plants) are very diverse, and there is no single classification of this group. A classification is a hypothesis about the evolutionary relationships among species, and it is in the nature of science that hypotheses are modified to reflect the discovery of new data. It should not be surprising, therefore, to realize that classifications have changed — sometimes rather drastically — with the passage of time and the advance of botanical study. While older classification systems rely on comparing plant morphology such as flower parts, modern classification systems use DNA data and statistical models of evolutionary relationships.

One important insight derived from these DNA studies is the recognition that flowering plants fall into three major groups:

1. **Basal angiosperms** – A somewhat heterogeneous group of plants that represent the modern descendants of some very early branches of the evolutionary tree.
2. **Monocots** – More or less as traditionally defined, plants with one cotyledon, scattered stem bundles, pollen with a single pore, and flower parts in threes.
3. **Eudicots** – Plants with two cotyledons, stem bundles in a ring, pollen with (usually) three pores, and flower parts mostly in fours or fives.

### Some Prominent Flowering Plant Families

One convenient way to assimilate flowering plant diversity is to begin by learning how to recognize several common and distinctive plant families. There are approximately 200 families of vascular plants found spontaneously in Virginia. Following are a few examples of prominent angiosperm (flowering plant) families.

- **Poaceae** – Grass family (fig. 13). Monocot herbs with round stems and leaves in two ranks; flowers minute and organized into spikelets containing one or more flowers; each spikelet enclosed at its base by two more-or-less similar bract-like glumes; each flower enclosed by a pair of dissimilar bracts — the palea and lemma.



Figure 13. River oats (*Chasmanthium latifolium*); Poaceae or grass family (Britton and Brown 1913).

- **Cyperaceae** – Sedge family (fig. 14). Monocot herbs often with triangular stems and leaves in three ranks; flowers minute and organized into spikelets, each reduced flower subtended by a scale-like bract.



Figure 14. Flatsedge (*Cyperus compressus*); Cyperaceae or sedge family (Britton and Brown 1913).

- **Juncaceae** – Rush family (fig. 15). Monocot herbs; flowers small, greenish, complete; three sepals; three petals; three

or six stamens; three-lobed pistil; ovary superior; seeds numerous.

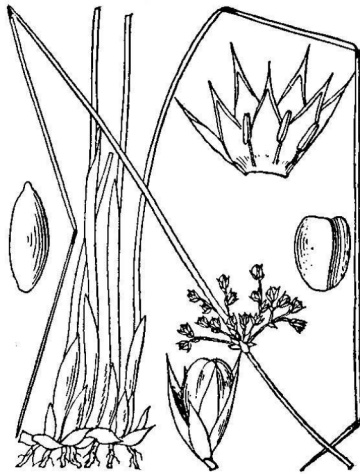


Figure 15. Soft rush (*Juncus effusus*); Juncaceae or rush family (Britton and Brown 1913).

- Orchidaceae – Orchids (fig. 16). Monocot herbs, terrestrial in Virginia but often epiphytic in the tropics; flowers with three sepals and three petals, one of which specialized as a prominent “lip”; pollen shed in compact masses called pollinia; ovary inferior; seeds minute and dust-like.

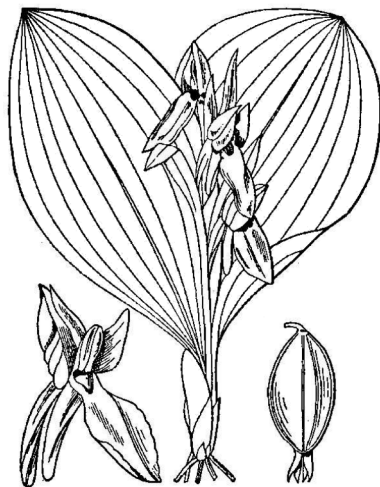


Figure 16. Showy orchid (*Galearis spectabilis*); Orchidaceae or orchid family (Britton and Brown 1913).

- Asteraceae – Daisy family (fig. 17). Eudicots, often shrubby or herbaceous; flowers small, grouped into daisy-like clusters; ovaries inferior, maturing into single-seeded fruits.

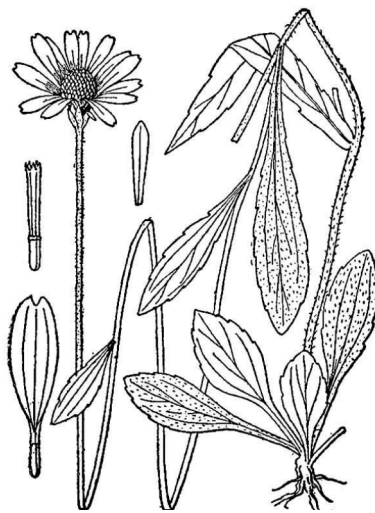


Figure 17. Black-eyed Susan or orange cone-flower (*Rudbeckia fulgida*); Asteraceae or daisy family (Britton and Brown 1913).

- Fabaceae – Legume family (fig. 18). Eudicots of various habits; roots bear nodules containing symbiotic nitrogen-fixing bacteria; leaves typically compound, with a hinge-like pulvinus at the base and below each leaflet; flowers pea-like, with one vertical “standard” petal, two lateral “wing” petals, and two forward-projecting “keel” petals that enclose the stamens and single carpel; fruit a dry pod.



Figure 18. Black locust (*Robinia pseudoacacia*); Fabaceae or legume family (Britton and Brown 1913).

- Lamiaceae – Mint family (fig. 19). Fragrant eudicot herbs; stem often square in cross-section; leaves opposite; flowers usually arranged in whorled clusters; petals fused forming upper and lower “lips”; fruit consists of four small nutlets enclosed within the persistent sepals.

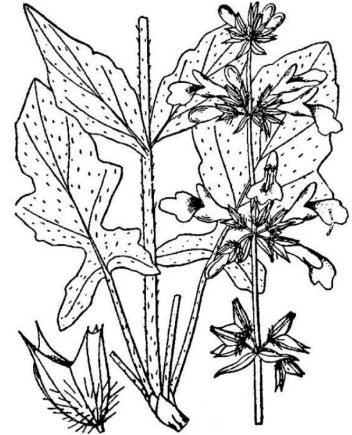


Figure 19. Lyre-leaved sage (*Salvia lyrata*); Lamiaceae or mint family (Britton and Brown 1913).

- Rubiaceae – Madder family (fig. 20). Eudicot herbs or shrubs (or trees in the tropics); leaves opposite, with stipules often extending between the petiole bases; flowers with fused petals; ovary inferior.



Figure 20. Partridge berry (*Mitchella repens*); Rubiaceae or madder family (Britton and Brown 1913).

- Brassicaceae – Mustard family (fig. 21). Eudicot herbs containing pungent glucosinolate molecules; leaves alternate; flowers in flat-topped clusters that elongate into raceme-like patterns of fruits; four petals; six stamens, often of unequal length; ovary superior, consisting of two carpels; fruits dry, dehiscent.



Figure 21. Wild radish (*Raphanus raphanistrum*); Brassicaceae or mustard family (Britton and Brown 1913).

- ♦ **Apiaceae** – Carrot family (fig. 22). Eudicot herbs, often aromatic; leaves often compound with a sheathing leaf base; flowers small, produced in simple or compound umbels (flat-topped clusters); ovary inferior; fruit splitting in two halves, each containing a single seed.



Figure 22. Wild carrot (*Daucus carota*); Apiaceae or carrot family (Britton and Brown 1913).

- ♦ **Rosaceae** – Rose family (fig. 23). Eudicot herbs, shrubs, or trees; leaves alternate, toothed, either simple or compound, associated with stipules at the base; flowers with separate petals and many stamens; ovary and fruit highly variable.

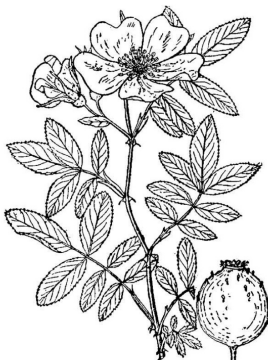


Figure 23. Carolina rose (*Rosa carolina*); Rosaceae or rose family (Britton and Brown 1913).

## Key Characters Used to Identify Plants

### Habit

The overall growth habit of plants can vary tremendously from the minute green blobs that constitute duckweeds floating on a pond to towering forest trees. A few basic categories are fundamental.

- ♦ **Herbs** are plants that produce very little woody tissue in their stems and/or produce aboveground stems that persist for just a single growing season.
- ♦ **Shrubs** are smallish woody plants whose stems often grow in clumped fashion and are generally less than 25 feet tall.
- ♦ **Trees** are woody plants, usually single-stemmed and taller than 25 feet.
- ♦ **Subshrubs** are intermediate between herbs and shrubs.
- ♦ **Lianas** are plants with a vine-like habit.

### Duration

- ♦ **Annuals** complete their life cycle (seed to seed) in a single growing season.
- ♦ **Biennials** require two years, typically growing as a **rosette** — a cluster of leaves at ground level attached to a short stubby stem — the first year and then **bolting** the second year, producing a tall stem bearing flowers, fruits, and seeds.
- ♦ **Perennials** persist for many years. Herbaceous perennials often die back at the end of the growing season and survive the winter months as a dormant underground structure. These so-called **rootstocks** take various forms, many of which are actually modified stems. **Rhizomes** and **tubers** are horizontally oriented stems.

- **Rhizomes** are moderately thick and decidedly elongate (fig. 24). **Tubers** are very thick and fleshy, generally not much longer than they are wide (fig. 25).

- A **corm** is a vertically oriented underground stem in which the food is stored in stem tissue; it is often protected by papery scale-like leaves (fig. 26).

- A **bulb** is also a vertically oriented underground stem, but in a bulb the food is stored in a series of fleshy leaves (fig. 27).

- In addition, some perennial plants produce **stolons** or **runners** that are elongate and more-or-less leafless horizontal stems at the soil surface or at a shallow depth in the soil, the tips of which generate new plants (fig. 28).

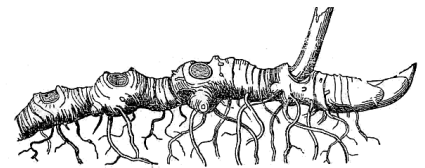


Figure 24. Rhizome of Solomon's seal (*Polygonatum* sp.; Gray 1868).

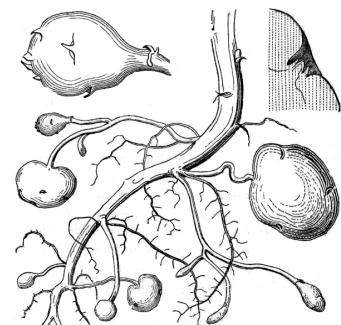


Figure 25. Tuber of potato (*Solanum tuberosum*; Gray 1868).

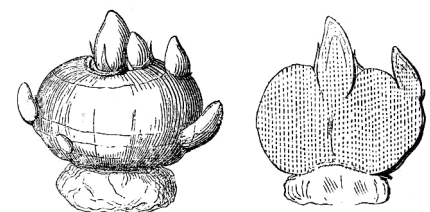


Figure 26. Corm of crocus (*Crocus* sp.; Gray 1868).

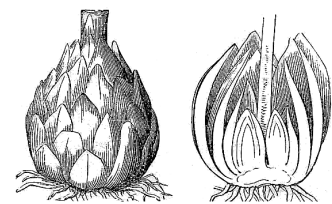


Figure 27. Bulb of lily (*Lilium* sp.; Gray 1868).



Figure 28. Stolons or runners of peppermint (*Mentha piperita*; Gray 1868).

## Root Systems

Although often out of sight and out of mind, root systems provide important clues for the identification of plants.

- A **diffuse root system** consists of numerous highly branched, more-or-less fine-textured roots, none of which is appreciably larger than the rest.
- A **tap root system** is dominated by a single large root modified for food storage.

In many plants the root system is derived completely from the first root that emerges from a germinating seed. In other plants, additional **adventitious roots** arise from within stems (and less commonly, leaves). Adventitious roots may have specific functions indicated by descriptive names, for example, **prop roots** or **climbing roots**.

## Leaves

Stems bear leaves. The portion of a stem to which a leaf is attached is known as a **node**; the intervening leafless portions of the stem constitute the **internodes**. Nodes can be very close together, resulting in a clustering of leaves, or the internodes can be elongate, resulting in well-separated leaves. Also, the number of leaves per node is often a useful character in plant identification. The basic patterns of leaf arrangement/attachment are:

- **Alternate** – One leaf per node (fig. 29).
- **Opposite** – Two leaves per node, typically on opposite sides of the stem (fig. 30).
- **Whorled** (or **verticillate**) – Three or more leaves per node (fig. 31).



Figure 29. Alternate arrangement of simple leaves in spicebush (*Lindera benzoin*; USDA).

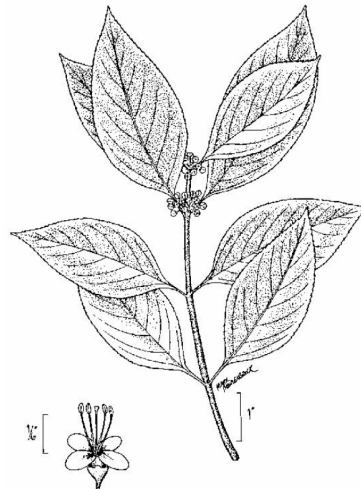


Figure 30. Opposite arrangement of simple leaves in American beautyberry (*Callicarpa americana*; USDA).

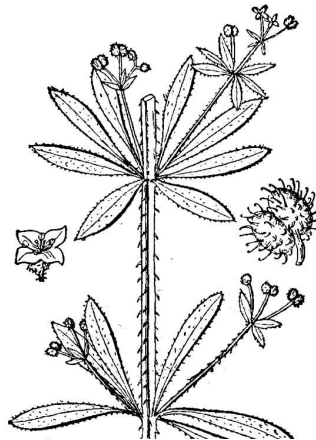


Figure 31. Whorled arrangement of simple leaves in bedstraw (*Galium aparine*; Britton and Brown 1913).

Leaves are typically organized into a broad, photosynthetic portion (**leaf blade** or **lamina**) and a more slender portion (**petiole** or **leaf sheath**) that connects the leaf to the stem. Leaves lacking petioles or sheathing bases are said to be **sessile**. In a **simple leaf**, the blade is an undivided single structure (figs. 29, 30, and 31). In a **compound leaf**, the blade is subdivided into multiple **leaflets**. The leaflets of compound leaves can occur in several different patterns, but it is useful to note that they generally are all oriented in the same flat plane.

**Pinnately compound** leaves (fig. 32) have the leaflets attached laterally along the sides of an extension of the petiole known as the **rachis**.

**Palmately compound** leaves have multiple leaflets that diverge from the apex of the petiole (fig. 32D). A compound leaf consisting of three leaflets is termed **trifoliolate** (fig. 33D). Lobed leaves are morphologically intermediate between simple and compound leaves (fig. 33A-C). Leaf blade tissue is continuous between the lobes of a simple leaf but is discontinuous between the leaflets of compound leaves.

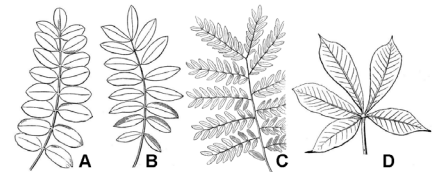


Figure 32. Compound leaves; A, once pinnately compound and odd-pinnate; B, once pinnately compound and even-pinnate; C, twice pinnately compound; D, palmately compound (Gray 1868).

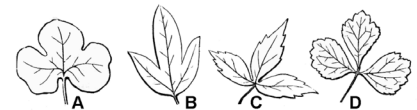


Figure 33. Lobed and trifoliolate compound leaves (Gray 1868).

Many leaves are associated with flaps of tissue called **stipules**, usually located at the node or along the basal portion of the petiole. Stipules can assume many different forms. Though usually small, they can be large and resemble leaf blades; in other cases, they are modified into sharp-pointed **spines**, as in the black locust (*Robinia pseudoacacia*). They may function to cover

young tissues at the stem tip, and they may persist on the plant or be shed as soon as its associated leaf is fully mature. Sometimes they are small and difficult to see without magnification. Plants lacking stipules are said to be **estipulate**.

Many additional details of leaf structure can be useful in distinguishing different species of plants. Important characters can be found in the overall shape of the leaf blade and the detailed configuration of the apex, base, and margin. It is important to remember that leaf size and shape can be somewhat variable within a species or even within an individual plant. Many species can be recognized on the basis of leaf characters alone, but it is often the case that features of flowers and fruits prove to be definitive in the identification of plant species.

### Inflorescence

An **inflorescence** is the pattern of flower production by a plant. The simplest inflorescence is a **solitary flower**. Solitary flowers are produced in two different ways, either at the end of the main stem (**terminal**; fig. 34A) or in the angle between a stem and a leaf (**axillary**; fig. 34B). Often, plants produce multiple flowers in an inflorescence, and there are a number of different forms of multiple-flowered inflorescences.

Elongate, unbranched inflorescences include the **raceme** (each flower has a stalk), the **spike** (individual flower stalks absent), and the **corymb** (flower stalks of variable length resulting in a flat-topped group of flowers).

A **cyme** is a branched inflorescence with a terminal flower that opens first and a pair of lateral flowers that arise below the first one and flower somewhat later. **Compound cymes** repeat this pattern over and over.

An **umbel** consists of many stalked flowers arising from a common point. A **compound umbel** repeats this pattern, with several individual umbels arising from a common point. A tight mass of stalkless flowers is termed a **head**.

A number of additional inflorescence types are restricted to particular plant families

or genera and will not be considered here. However, one additional type, the **ament** or **catkin**, deserves mention. Although the details can vary, these inflorescences are elongate and consist of numerous reduced, unisexual flowers.



Figure 34. Solitary flowers; A, solitary and terminal; B, solitary and axillary (Gray 1868).

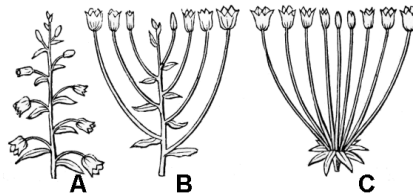


Figure 35. Indeterminate inflorescences; A, raceme; B, corymb; C, umbel (Gray 1868).

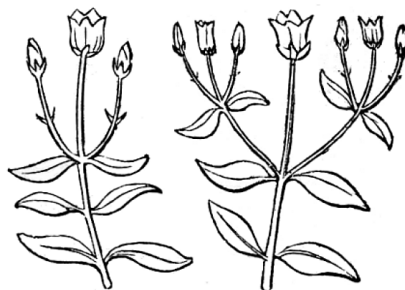


Figure 36. Determinate inflorescences; A, cyme; B, compound cyme (Gray 1868).

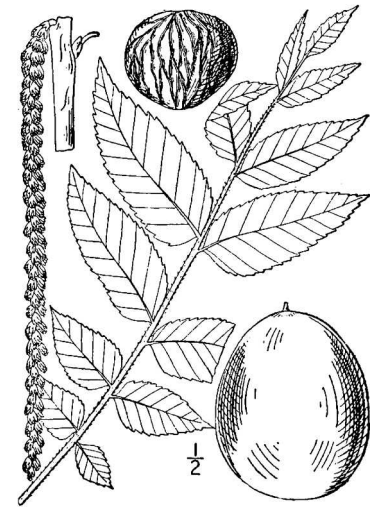


Figure 37. Black walnut (*Juglans nigra*); note the catkin of staminate flowers, left (Britton and Brown 1913).

### Flowers

Flowers occur in myriad forms. Potentially, each flower possesses four floral organs attached to the end (**receptacle**) of a flower-bearing stem or **pedicel**. When all four organs are present, they occur in a stereotypical sequence (fig. 38).

1. The **sepals** are attached lowermost on the pedicel, and therefore, they occur outermost in the flower bud they serve to protect. Sepals are often green and quite leaf-like in appearance, but in many plants, they can also be brightly colored. Collectively, all the sepals of a flower constitute the **calyx**.
2. **Petals** are next, and they are typically brightly colored, serving to attract pollinators to the flower. The collective term for all petals in a single flower is **corolla**.
3. Next are the **stamens**, consisting of a stalk-like **filament** tipped with an enlarged **pollen-containing anther**. Because the pollen grains will eventually release sperm cells, stamens are commonly considered “male.”
4. The innermost floral organ is the **pistil**, which consists of three distinct regions: (1) a terminal **stigma** that functions to receive pollen grains, (2) a basal **ovary** that contains the **ovules**, and a usually elongate **style** that functions to connect stigma and ovary.

Because each ovule contained within the ovary will eventually produce an egg, the pistil is commonly considered “female.” Eventually, the ovary region of the pistil will mature to produce a **fruit** that will contain one or more **seeds** derived from the ovules after becoming transformed by the plant’s sexual reproductive process.

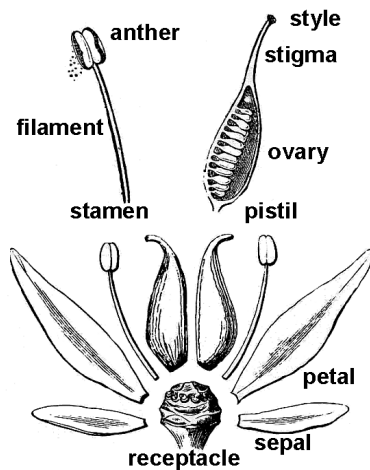


Figure 38. Diagrammatic rendition of dissected flower of woodland stonecrop (*Sedum ternatum*); this flower is complete and perfect (Gray 1868).

A flower that possesses all four floral organs is said to be **complete** (fig. 38). One or more floral organs may be absent, in which case the flower is said to be **incomplete** (fig. 39).

Whether complete or incomplete, if the flower contains both stamens and pistils, it is said to be **perfect** (or **bisexual**; figs. 38, 39B). **Imperfect** (or **unisexual**) flowers possess either stamens or pistils, not both. Thus, imperfect flowers are often referred to as either **staminate** (male) or **pistillate** (female; fig. 39A).

Some species that form unisexual flowers produce them on different parts of the same plant; such plants are termed **monoecious** (sexes separate, but contained on *one* plant). Other species with unisexual flowers are **dioecious**, producing staminate and pistillate flowers on different plants (sexes separate, contained on *two* plants).

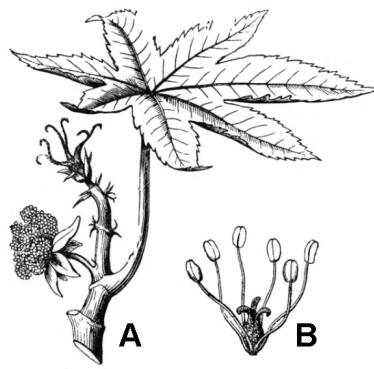


Figure 39. Incomplete flowers; A, unisexual flowers of castor bean (*Ricinus communis*), below, staminate (male); above, pistillate (female); B, incomplete perfect flower of lizard’s tail (*Saururus cernuus*; Gray 1868).

The numbers of floral organs per flower can vary tremendously among different species. It is common for the various floral organs to occur in multiples of small whole numbers; thus, one speaks of flowers that are **3-merous**, **4-merous**, or **5-merous**. Other numbers can occur, and sometimes one of the floral organs can be present in very large numbers.

Floral organs of different species may occur in two basic patterns of symmetry:

1. **Radial symmetry** (an **actinomorphic** flower) is characterized by symmetry about a central point, often visualized as the multiple pieces of a pie (fig. 40A).
2. **Bilateral symmetry** (a **zygomorphic** flower) occurs as symmetrical halves or symmetry of reflection across a midline; like many familiar animals, such flowers have distinct right and left sides (fig. 40B).

In many flowers, the four floral organs (sepals, petals, stamens, carpels) are completely separate from each other, while in others, these organs can be **fused** together or to each other.

Ovary position relative to the other floral organ also varies. A **superior ovary** (figs. 41, 42A) is located above the sepals, petals, and stamens, whereas an **inferior ovary** (fig. 42D) is located below them. Intermediate conditions, including ovaries surrounded by a **hypanthium** (fig. 42B) and ovaries that are **half-inferior** (fig. 42C), also occur.

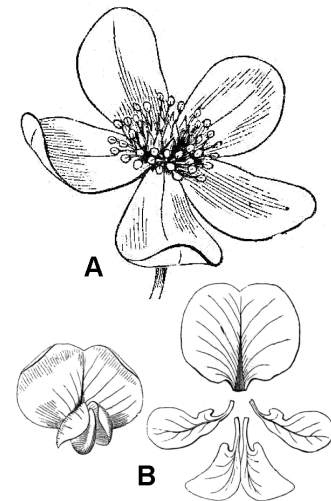


Figure 40. Floral symmetry; A, radial or actinomorphic symmetry, anemone (*Anemone* sp.); B, bilateral or zygomorphic symmetry, black locust (*Robinia pseudoacacia*; Gray 1868).

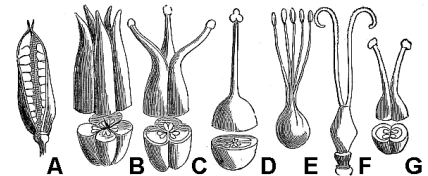


Figure 41. Variations in pistil structure; note variation in number of carpels, degree of fusion of styles and/or stigmas. All of these represent superior ovaries (Wood 1889).

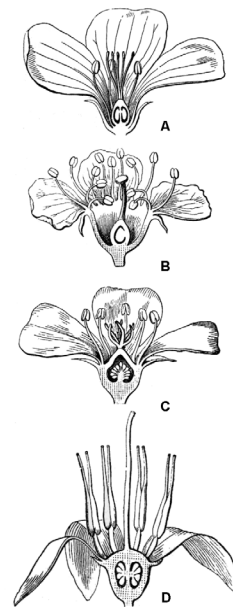


Figure 42. Ovary position; A, superior ovary of flax (*Linum* sp.); B, ovary surrounded by a hypanthium, cherry (*Prunus* sp.); C, half-inferior ovary of purslane (*Portulaca oleracea*); D, inferior ovary of cranberry (*Vaccinium macrocarpum*; Gray 1868).

## Fruits

Typically, fruits mature either as dry or fleshy structures. Some familiar dry fruits include **capsules** (containing many seeds) and **nuts** (a single seed contained in a hard fruit wall). Some familiar fleshy fruits include the **drupe** (one seed inside) and **berry** (many seeds inside).

**Simple fruits** are the product of a single ovary of a single flower, whether that ovary consists of one or multiple carpels. The terms in the preceding paragraph refer to such simple fruits.

**Aggregate fruits** (fig. 43C) develop from multiple closely spaced but ultimately separate carpels that were produced by a single flower.

**Multiple fruits** (fig. 43D) develop from the ovaries of multiple closely clustered flowers. As with simple fruits, the individual units of aggregate or multiple fruits can mature as dry or fleshy elements.

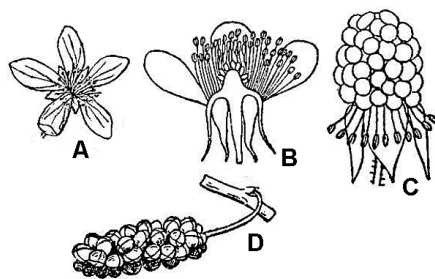


Figure 43. Aggregate and multiple fruits; A, flower; B, flower diagram; C, aggregate fruit of raspberry (*Rubus* sp.); D, multiple fruit of red mulberry (*Morus rubra*; Britton and Brown 1913).

## Threats to Plants in Virginia

### Habitat

There can be little doubt that the single greatest threat to plants in Virginia is alteration of habitat — a process that is an inevitable consequence of human life. The current human population of the world and civilization as we know it came to exist because of the successful ways that we alter and exploit the habitats in which we live.

We live in houses and tend yards that seldom mirror local natural habitat. Our work and pursuit of recreation frequently take place in unnatural, man-made settings.

We travel hither and yon, requiring roads, railroad tracks, and airports. To fuel our bodies, we farm vast acreages of land; to fuel our economy, we cut forests, dig mines, drill oil wells, and create large industrial complexes. We also need space to dump our trash.

Collectively, these activities alter natural environments and constitute our collective “human footprint.” Clearly, our presence on the planet comes at the expense of vast amounts of space that once functioned with little or no human impact. Our existence displaces plants and animals.

Despite the extent of our footprint on nature, the future of many common species seems secure; natural habitats are still extensive, and many organisms can tolerate some degree of co-existence with people. However, rare species — simply because there are few individuals present and their geographic extent is limited — are especially vulnerable to habitat alteration by human activity.

### Exotic Plants and Animals

One aspect of the human footprint requires special mention: our propensity to introduce organisms outside their natural range of occurrence. Any species present in an area outside its natural range can be considered **exotic** or **alien**. In the case of farming, horticulture, or the pet trade, the introduction of aliens is often intentional, but organisms can also be transported around the globe as unintended consequences of human travel and the trade and transport of merchandise and commodities.

While many exotic species can be considered beneficial, for example, agricultural crops, others can “run wild” and impact native plants and animals in a wide variety of ways, chiefly by occupying habitat, i.e., taking up space that otherwise would be available to natives, and by altering the natural ecological function of that habitat. Exotic alien plants such as Japanese honeysuckle (*Lonicera japonica*), garlic mustard (*Alliaria petiolata*), kudzu (*Pueraria lobata*), Japanese stilt grass (*Microstegium vimineum*), Oriental bittersweet (*Celastrus orbiculatus*), and others are particularly threatening to native plants and animals

because they actively and vigorously invade natural habitats. These species are often called **invasive exotics**.

Exotic animals can also threaten plant diversity. For example, the emerald ash borer, an insect, threatens serious impact on stands of our native ash trees. Depredation of our forest trees by the imported gypsy moth is another well-known example. Threatening exotics can also include pathogens such as the fungi that cause Dutch elm disease, chestnut blight, and dogwood anthracnose.

### Overcollection

Another important threat to certain native plant species comes directly from humans: **overcollection**. Because most organisms have a reproductive capacity greater than what the environment can support, it should, in theory, be possible to collect or remove some number of individuals from nature with minimal impact on the long-term sustainability of the population.

However, if demand is sufficiently great or the financial incentive is sufficiently strong, people can and do collect wild plants in volumes that can threaten the future of the species. Ginseng — collected and sold for medicinal purposes — is one pertinent example, as are various wildflowers unscrupulously dug from the wild and sold to naïve (or uncaring) gardeners. From a conservation perspective, the best policy is to leave natural communities intact. As the saying goes, “Take nothing but photographs, leave nothing but footprints.”

### Common Plant Species

Common plant species are too numerous to discuss individually within the structure of a chapter focused generally on botany. Considered here are some strategies for gaining familiarity with the plants that will be encountered most frequently in Virginia. The diversity of plants in Virginia is sufficiently great that semester-long college-level courses focused on local flora represent one strategy toward assimilating a working knowledge of our most common plants. Avid naturalists, however, can take advantage of readily available resources and learn much of the same information on their own.



Naturalists can learn much by using illustrated guides and matching pictures of plants encountered in the field. The Virginia Department of Forestry publishes a booklet on the “Common Forest Trees of Virginia” (see Additional Resources). Given the prominence of forests in the natural vegetation of the state, learning to recognize common trees should be a goal for every naturalist. There are numerous published guides to trees, trees and shrubs, wildflowers, and ferns targeted to the motivated amateur. It is important to select guides that are geographically appropriate to Virginia. Because many of our most common plants also occur widely throughout Eastern North America, it is generally easy to select an appropriate plant guide.

“Newcomb’s Wildflower Guide” (see Additional Resources) stands apart from many of the popular picture-matching guides in that it introduces the use of keys requiring close examination of flower structure. Although it may be more challenging than some other guides written for amateurs, it has the advantage of bringing the user closer to the sophistication of formal botanical floras.

Joining the Virginia Native Plant Society, attending local chapter meetings, and participating in society-led field trips are great ways to learn from others who share an interest in the plant life of Virginia.

## Rare Species, Rare Communities, and Endemic Species

### Rare Habitats in the Eastern Deciduous Forest

Though hard to explain, for many, the novelty of rare species holds a certain fascination. Many rare species also are found in uncommon and aesthetically pleasing natural communities. To understand rare species and communities, it is helpful to consider what the landscape may have been like before European settlers arrived in the New World.

Without debating the role of fire and Native Americans’ use of fire, it is reasonably safe to say that Europeans found a “sea

of trees” — especially once they ascended beyond the coastal marshes. The **deciduous forest biome** stretched across the land, and it would be more than two centuries before they knew what lay beyond. For the most part, a shady, forested environment dominated the landscape. While many differences existed over this immense area, most forest- and shade-loving herbaceous species would have been common.

In contrast, species favoring high light environments would have been much more limited. Open, sunlit conditions occurred in marshes, around ponds, at rock outcrops, along the flood-scour zone of hard-bottom rivers, and where extreme edaphic conditions didn’t allow a full canopy to develop. In short, only the environmental extremes created a break in the forest — too wet, too rocky, too strongly basic, etc., to allow a permanent forest to develop.

In this region, such conditions are usually small, patchy, and effectively isolated from one another. They would have to have occurred with sufficient frequency and over a broad enough geographical area to be able to maintain viable populations or develop endemic species.

### Shale Barrens

Good examples of a rare habitat from this area are the mid-Appalachian **shale barrens**. Stretching in a narrow elliptical pattern within the ridge and valley physiographic province, areas underlain by Devonian age shales occur.

Where certain combinations of slope aspect and proximity to an undercutting stream exist, relatively barren natural communities occur that are characterized by loose shale fragments covering most of the ground, sparse herbaceous cover, and a thin canopy of low, scraggly, red cedar, Virginia pine, and several hardwood species. The loose shale fragments creep downslope by gravity and the continuous undercutting of the adjacent stream, creating unfavorable conditions for seed germination and establishment. For the same reasons, these harsh-looking environments are also relatively fragile and easily damaged by hiking on them.

The shale barrens are home to about a dozen endemic species and a number of

rare plant species from the Midwest and West. The **endemics** include three species of clematis (*Clematis albicoma*, *C. viticaulis*, and *C. coactilis*), Kate’s Mountain clover (*Trifolium virginicum*), shale barren ragwort (*Packera antennariifolia*), a buckwheat (*Eriogonum allenii*), an evening-primrose (*Oenothera argillicola*), and the endangered shale barren rockcress (*Boechera serotina*), to name the best known. Other species, known as **long-range disjuncts**, occur hundreds of miles from their next nearest populations. A few of these are chestnut lipfern (*Cheilanthes eatonii*), forked spleenwort (*Asplenium septentrionale*; so far known only from West Virginia), western wallflower (*Erysimum capitatum*), and bent milkvetch (*Astragalus distortus*).

As is often the case with extreme environmental conditions, these tracts of land have little or no agricultural or timber value and are, thus, pristine natural communities. Not only are they aesthetically pleasing but they can also give one the sensation of being transported to arid regions a thousand miles or more to the west. The shale barrens have even been described as the “deserts” of the Appalachians; however, research has shown that the endemic plant species do not experience drought stress. In fact, several even flower during July and August, the hottest and driest months of the year!

There are many additional reasons why a species might be rare, and their distributions and habitats may be clues. As naturalists, an understanding of some of these factors and patterns enriches our outdoor experience and provides a fuller appreciation for and a greater commitment to conserving and preserving what remains.

### Rare Plants in Common Habitats

Some species seem to be naturally rare. Typically, these species occur over a broad geographical area but are found very infrequently within that region. A good example is swamp pink (*Helonias bullata*), which ranges from northern Pennsylvania and New Jersey to northern Georgia, but it has fewer than about 50 populations. *Helonias* is a **monotypic genus**, that is, a genus with only a single species. Because it has no close relatives, it is thought to be an ancient species that once occurred with

much greater frequency but has now died out over much of its range — a species on its way to extinction, you could say.

Although infrequent, populations can be very large, containing many thousands of individuals. In this sense, it may not seem rare, but even a slight change in hydrology could eliminate entire populations very quickly. If undisturbed, these populations may persist thousands of years. We don't want to be the agents to cause its demise!

Other rare species seem to be naturally rare and have adopted this life history strategy. A number of orchids fit this scenario. The small whorled pogonia (*Isotria medeoloides*), for example, occurs at widely scattered locations over much of the deciduous forest biome. Its habitat is relatively abundant and doesn't seem very special.

Why should it be so rare? Monitoring and life history studies have not answered this question, but we have learned that the species can persist for years without flowering, and individuals may remain dormant for one to several years, producing no above-ground parts. Individual plants may produce many thousands of tiny seeds, each requiring an association with soil fungi (a mycorrhizal association) for survival. Land-use patterns on a landscape scale make it very difficult to assess the long-term threats for this species.

### Marl Marsh Wetlands

Getting back to the idea we began with, many — if not most — rare species in our region are rare because their preferred habitat is rare or has become rare due to man's impacts on the environment. One of the best examples pertains to species that occur in **marl marsh wetlands**, mostly in the limestone valleys of Western Virginia. Drainage is impeded by the development of a layer of relatively pure, lime-rich clay (marl) over long periods of time.

These habitats were once common in the region but have been lost or badly degraded as landowners have attempted to reclaim the land for agricultural purposes. Only a few, mostly small sites remain intact. Many others have persisted in a degraded condition due primarily to the fact that

groundwater seepage, springs, and artesian wells were so strong that attempts at drainage have failed. Many rare species occur in these communities: water horsetail (*Equisetum fluviatile*), tufted hairgrass (*Deschampsia caespitosa*), sedges (*Carex schweinitzii*, *Carex prairea*, *Carex suberecta*), smooth loosestrife (*Lysimachia quadriflora*), buckbean (*Menyanthes trifoliata*), rough avens (*Geum laciniatum*), and queen of the prairie (*Filipendula rubra*). Many of these find their primary areas of occurrence north and west of the Appalachians.

### Rare Habitats of Southeast Virginia

While there are many other examples we could touch on, we should mention the **pine barren** and **longleaf pine-turkey oak communities** of Southeastern Virginia. Though located at the northern end of their natural range in Southeastern Virginia, these communities occupied thousands of acres in presettlement times. They have been eliminated by a combination of the pine tar industry, subsequent conversion to pine plantation for timber production, and fire suppression.

Fire is the natural agent that maintains these communities in a more-or-less perpetual disclimax, i.e., a stalled succession. The elimination of natural fires has led to succession from open pine savanna supporting many sun-loving species to densely vegetated forests where the latter are not able to survive.

Man's effect on the environment is two-sided in this case. While on one hand we have virtually eliminated a whole segment of our natural heritage, we inadvertently preserved remnants of this flora in power line and pipeline corridors where mowing and spraying provided open, sunny conditions where some of these species have been able to survive.

### Richness of Virginia Plant Life

Virginia plant life is rich due primarily to a great diversity of climate, elevation, and substrates creating a wealth of habitats. Over thousands of years, as plant species migrated in response to changes in climate, the unglaciated terrain we now know as

Virginia has, in a sense, been collecting elements from the north, south, and west to produce a fascinating array of species and natural communities that continue to be revealed. Much awaits the curious naturalist!

## Techniques and Methods for the Study of Plants

### Inventories and Checklists

Ecologists and land managers often need descriptive statistics of plant communities. One critical piece of information is the basic **inventory** or **checklist of species**, a simple list of every single plant species that occurs within the prescribed boundaries of the study site. Inventories can be assembled through repeated observation of the vegetation, recording the different species as they are encountered. Because some species are ephemeral or highly seasonal in their appearance, especially in the temperate zone, it is often necessary to extend observations through at least one year. One proceeds with observing and compiling until the whole site has been observed multiple times and the rate of encountering species new to the list drops to a negligible level.

For very large study areas, a **sampling strategy** may be needed because perusing every nook and cranny of a large region is impractical. The sampling strategy might profitably include examination of each distinctive type of habitat within the large area, and it might include adoption of some of the quantitative procedures such as quadrats or transects, described below. Any inventory or checklist should be supported by at least one **voucher herbarium specimen** for each species included in the list.

Beyond a basic inventory or checklist, it is often useful to have additional information about each of the plant species present in the region. This additional information is often obtained by recording quantitative data following a particular sampling strategy. Some basic **quantitative statistics** used in vegetation analysis include the following:

- ♦ **Abundance** is an estimation of the numbers of individuals present, often

using arbitrarily defined abundance classes, such as rare, occasional, frequent, abundant, and very abundant.

- ♦ **Density** can be expressed in terms of number of individuals per unit area.
- ♦ **Relative density** is expressed as a ratio of the number of individuals for each species divided by the number of all individuals in the sample.
- ♦ **Cover** — like density and abundance — reflects the number of individuals present but it also takes into account the effect of plant size because one or two large trees may have far greater impact on a local community than dozens of very small herbs. Cover can be estimated or measured as the surface area of foliage for a given species projected on the ground. Cover is often used to express the ecological **dominance** of a given species of plant.

### Sampling Methods

Quantitative methods generally require adoption of a defined sampling method. Two of the most commonly used sampling methods are based on quadrats and transects.

#### Quadrats/Study Plots

A quadrat or **study plot** is a defined area within which all the plants are recorded and measured. As the name implies, quadrats are often four-sided geometric figures, either squares or rectangles.

#### Transects

**Transect methods** involve sampling along a line. End points of the line are fixed, a string is stretched between the two end points, and every plant intercepted by the transect is recorded and measured. This technique works well for herbaceous plants because it is easy to superimpose the string-defined transect over the vegetation.

For woody vegetation, one way to use a strictly linear transect would be to characterize the canopy directly over the string, recording the identity and numbers of each canopy species that occurs overhead, and then tallying the distance along the transect that is occupied by each species of canopy tree.

### Other Sampling Methods

#### Herbarium Specimens

Any serious attempt to document plant life in a defined region requires accurate and verifiable identifications. Herbarium specimens can serve as vouchers for the identifications used in any such study. These are pressed and dried museum specimens that represent each kind of plant studied in the field. It is not always possible to identify species in the field, and the voucher provides a means for identification at a later date. Moreover, identifications made in the field that are not backed by vouchers are little more than assertions made by the ecologist. Names of organisms used in an ecological study that are tied to voucher specimens can always be verified.

Making herbarium specimens starts with taking data in a **field notebook**. It is usually convenient to start with **date** and **locality** information. Locality information is usually recorded sequentially from the most inclusive geographic category to the smallest or most specific. Hence, one might start with the state and county and proceed to site-specific details. Given the widespread availability of GPS systems, latitude and longitude should also be recorded. Each specimen should receive a unique field number; duplicate (or multiple) specimens of the same plant taken at the same location on the same date should all receive the same field number.

Following locality data, it is often useful to note ecological observations, nature of habitat, soils, exposure, associated vegetation, etc. If anything is known about the plant's identity, the name or group to which it belongs should be noted next to the field number.

Finally, the collector should record any aspect of the plant that will not be preserved in the pressed and dried specimen. For trees, it is standard practice to record height and DBH; as needed, it is good practice to record flower and fruit colors, fragrances, presence of colored sap or latex, and any pollinators observed visiting the flowers.

Once the field notes are complete, the specimen should be collected. Every effort

should be made to make the collection as complete as possible, including roots for herbaceous plants, as well as flowers and/or fruits and seeds (or spore-bearing organs for ferns and fern allies). The amount taken should be sufficiently generous to allow identification of the pressed and mounted specimen.

HOWEVER, one must always be sensitive to conservation issues when collecting specimens; plants listed as rare or threatened or any plant present in local populations consisting of fewer than 20 individuals should be documented by non-destructive means, such as photography. Often, collections are held in plastic bags until they can be pressed and dried.

A standard plant press consists of two sturdy wooden frames and a series of cardboard corrugates, blotting papers, and sheets of folded newsprint. Folded newsprint may be a little smaller, but the other elements of a standard plant press are 12 inches by 18 inches. The plant is inserted inside the folded newsprint that is then sandwiched between blotters and cardboard. The press is built in successive repeating layers of newsprint-blotter-corrugate, with the press frames at the top and bottom of the stack.

Care should be taken while pressing to arrange the plant to maximum advantage so both leaf surfaces (upper and lower), flowers, and fruits (or spores) are well-exposed. When all plants have been inserted into the press, the frames are strapped down securely and the press is exposed to warm dry air until the plants are warm and dry to the touch. Specimen labels are prepared from the field notes and collated with the proper specimens that are then deposited with an herbarium curator for study, identification, and storage.

#### Photography

Photography is an important adjunct to the study of plant diversity and its documentation in ecological settings. Whether film or digital cameras are used, a few basic principles will help in the production of good quality photographs of plants.

- ♦ Lens and camera quality are important. Many consumer-level cameras designed

for candid snapshots of people lack the ability to resolve sufficient detail or focus for close-ups (or both) and are of limited utility in serious plant photography. Specially defined “macro” lenses are excellent for close-ups, but good results can be obtained from other devices like attachment lenses (in several degrees of “+” magnification) or lens extension tubes.

- Good lenses, however, cannot compensate for bad lighting. Generally, for detailed close-up work, bright but flat (low-contrast) light is best. Bright overcast conditions are generally better than direct full sunlight. Use of reflectors to increase light intensity or to fill in shadows cast by high-contrast light sources is very beneficial.
- Camera stability is also critical. Any movement of the camera during exposure will result in blurred images. As light intensity decreases, both exposure (open shutter) time and the need for rock-solid stability increase. Tripods (or monopods) become indispensable for exposure times less than 1/60th of a second.
- Finally, one of the easiest ways to take better photographs is to take a lot of them and be particular about which ones you keep or use. You may only need one image, but if you take 20 shots, you have the luxury of selecting the best of 20.

### BioBlitz

A popular way to highlight biodiversity in a defined geographic area is to conduct a **BioBlitz** — a concerted effort by a team of specialists to locate and identify all the living organisms in the study area. Usually there is a defined time limit to the event, often a single 24-hour period. Botanists who participate in BioBlitz events often focus on particular groups of plants. Many botanists have wide expertise among the vascular plants, but specialists are often required to inventory bryophytes (mosses and liverworts), lichens, or fungi with reasonable accuracy. Sampling techniques (quadrats and transects) and herbarium specimens are often made as part of the effort. In addition to much camaraderie, the end product of a BioBlitz is a detailed inventory of all organisms found in the study area.

## Study and Review Questions



1. What are the major taxonomic groups of plants found in Virginia? Which of these groups is, by far, both the most abundant and diverse? What environmental factors are important in determining the geographic distribution of plants in Virginia?
2. What are the major roles of plants in the flow of food and energy through the ecosystem? In what ways do plants both form and define distinctive ecological communities?
3. In what fundamental ways does the basic biology of plants and animals differ? In what ways are their basic biology similar?
4. What are some of the noteworthy adaptations of plants to dry habitats? To wet habitats? What aspects of flower structural diversity can be interpreted as adaptations to different modes of pollination? What different adaptations for seed dispersal can be found in plants?
5. Why have classifications of plants changed over the centuries? What sorts of evidence form the basis of modern plant classifications?
6. Of the diverse aspects of stem morphology found in different plants, which are useful in providing insights to identification? For leaves? For flowers? For fruits?
7. What are the most urgent threats to the plant life of Virginia?
8. What are some of the most abundant and diverse families of plants found in Virginia? What characters can be used to recognize these families?
9. While many plants are common and abundant, for those that are not, what explains their rarity? Do rare plants always occur in rare or uncommon habitats? What is an endemic species?
10. How do botanists compile inventories of plant species for a given geographic area?
11. What aspects of plant community structure can be elucidated by transect- and quadrat-based measurements?

## Acknowledgments

Ruth Douglas assisted in planning and outlining topics for inclusion in the botany chapter. Thomas Wieboldt contributed to the sections on plant distributions, rare species, rare communities, and endemic species.

## Sources of Illustrations

Britton, N. L., and A. Brown. 1913. *An Illustrated Flora of the Northern United States, Canada and the British*

*possessions*, 2nd ed. 3 vols. New York: Charles Scribner's Sons.

Goebel, K. (1900) 1905. *Organography of Plants: Especially of the Archegoniatae and Spermaphyta*. 2 vols. English edition by I. B. Balfour. Oxford: Clarendon Press. [Available as a 1969 reprint by Hafner Press, New York.]

Gray, A. 1868. *Gray's School and Field Book of Botany*. New York: Ivison, Blakeman, Taylor & Co.

- Grout, A. J. 1903. *Mosses With a Hand Lens and Microscope*. New York: published by the author.
- USDA (U.S. Department of Agriculture). National Resources and Consumer Services. "PLANTS Database." <http://plants.usda.gov/index.html>.
- Wood, A. (1870) 1889. *The New American Botanist and Florist*, rev. ed. Revised and edited by Oliver R. Willis. New York: A. S. Barnes and Company.
- Virginia Department of Conservation and Recreation, Division of Natural Heritage, Richmond, Va. 2009. *Invasive Alien Plant Species of Virginia*. [www.dcr.virginia.gov/natural\\_heritage/invspinfo.shtml](http://www.dcr.virginia.gov/natural_heritage/invspinfo.shtml).
- Virginia Department of Forestry. 2010. "Common Native Trees of Virginia." [www.dof.virginia.gov/trees/index.shtml](http://www.dof.virginia.gov/trees/index.shtml).
- Weakley, A. S., J. C. Ludwig, and J. F. Townsend, 2012. *Flora of Virginia*, Fort Worth: BRIT Press.

## Additional Resources

- Fleming, G. P., and K. D. Patterson. 2012. *Natural Communities of Virginia: Ecological Groups and Community Types*. Natural Heritage Technical Report 12-04. Virginia Department of Conservation and Recreation, Division of Natural Heritage, Richmond, Va. [www.dcr.virginia.gov/natural\\_heritage/documents/comlist02\\_12.pdf](http://www.dcr.virginia.gov/natural_heritage/documents/comlist02_12.pdf).
- Kent, M. 1992. *Vegetation Description and Analysis: A Practical Approach*. Boca Raton, Fla.: CRC Press.
- Newcomb, L. 1977. *Newcomb's Wildflower Guide*. New York: Little, Brown and Company.
- Raven, P. H., R. F. Evert, and S. E. Eichorn. 2005. *Biology of Plants*, 7th ed. San Francisco: W. H. Freeman.
- Stern, K. R., J. E. Bidlick, and S. Jansky. 2008. *Introductory Plant Biology*, 11th ed. Boston: McGraw-Hill.
- Townsend, J. 2009. *Natural Heritage Resources of Virginia: Rare Plants*. National Heritage Technical Report 09-07. Virginia Department of Conservation and Recreation, Division of Natural Heritage, Richmond, Va. [www.dcr.virginia.gov/natural\\_heritage/documents/plantlist09.pdf](http://www.dcr.virginia.gov/natural_heritage/documents/plantlist09.pdf).
- Virginia Botanical Associates. 2011. "Digital Atlas of the Virginia Flora." [www.vaplantatlas.org/](http://www.vaplantatlas.org/).