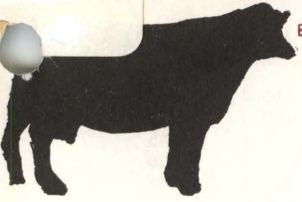


LD  
5655  
A762  
no. 77F  
c.2

# Dairy guidelines

EXTENSION DIVISION VIRGINIA POLYTECHNIC INSTITUTE BLACKSBURG, VIRGINIA

VIRGINIA POLYTECHNIC INSTITUTE  
AND STATE UNIVERSITY LIBRARIES



Series 77F - February 1969  
Replaces 77E

## Proven Holstein Sire Directory\*

James R. Nichols, Head, Dairy Science Department  
Ron Buffington, Extension Specialist  
John M. White, Research Geneticist

### V.P.I.'s Suggested Breeding Practices

1. Know your herd; keep accurate identification, production, and breeding records.
2. Study list of available AI proven bulls.
3. Understand the meaning of Predicted Difference and Reliability of a sire's proof.
4. Eliminate bulls with serious type defects or with other objectionable characteristics.
5. Eliminate bulls with low or negative predicted differences. From the remaining bulls, select those which you think should correct faults in your own herd. It is not necessary to confine your choice to the bull that actually has the highest Predicted Difference.
6. Breed 80% of your herd to these bulls.
7. Breed remainder to young bulls being sampled in AI.
8. Cull according to individual needs and from the bottom group of cows.
9. Provide environment conducive to profitable herd production.
10. Put cowmanship back into your operation. Be a dairyman! Place priority on cows, not "farm chores."

Predicted Difference rating for Proven bulls is the most accurate method yet devised for evaluating the genetic merits for milk production of a sire. It has been calculated to remove known environmental effects arising from herd, year, season of freshening, and number of daughters and herdmates. A "Plus" Pred. Diff. indicates a sire has the ability to improve the herd genetically, and a "Minus" Pred. Diff. means just the opposite.

Reliability of a sire's proof is a measure of the relationship between this proof and his true breeding value. A-I and non-A-I proven sires are no longer listed separately, but rather all are listed together with the number of daughters and number of herds represented in the proof. In essence, the more daughters and herds represented in the proof, the higher will be his reliability, and the more accurate his proof. Bulls with less than 40% reliability are not included in this report.

\*The data is from the January 1969 USDA Report and the February 1969 Holstein Report.

PRODUCTION AND TYPE INFORMATION ON PROVEN HOLSTEIN SIREs AVAILABLE TO VIRGINIA DAIRYMEN

February 1969

UNITED SEMEN EXCHANGE SIREs (USE)

Name of Sire	Stud	Daus.	Herds	#Milk	#Fat	% Reliability	Pred. Diff.	Pairs	Type Score Avg.	Diff/Exp.
Romandale Dividend Performer	VABA	341	217	15,664	556	95%	+1421	57	80.2	+1.50
Thonyma Stylemaster	NOBA	366	188	15,583	532	94%	+1379	103	80.0	+ .35
B D I Skokie Champ Abel	Md-W.Va	38	30	16,091	561	64%	+1294	14	77.1	-2.45
Whirlhill Kingpin	VABA	2909	940	15,452	566	99%	+1210	608	78.5	- .20
Sunnyside Standout	VABA	38	19	16,753	576	61%	+1202	33	80.9	+1.85
Harborcrest Sunshine	NOBA	1215	448	15,571	572	98%	+1188	616	79.4	- .45
Collins-Crest Buddy Burke	VABA	85	82	16,221	548	86%	+1168	17	80.5	+ .75
Wis Symbol Pride	NEBA	214	138	15,368	531	91%	+1079	39	80.5	+ .70
Naches Hoogland Flashy Boy	ABC	460	296	15,321	567	96%	+1046	98	79.1	- .50
Glenafton Clarion	VABA	102	65	15,294	521	84%	+1042	11	79.5	+ .05
Ivan-Nan Dictator Eden	MICH	71	53	15,318	549	75%	+ 965	15	81.7	+ .60
Harden Farms Noel Standard	VABA	424	202	15,015	527	95%	+ 844	161	80.0	+ .00
Roburke Ormsby Fobes Pabst	VABA	129	36	14,789	506	77%	+ 840	27	79.8	- .20
Foxlease Pontiac Leader	VABA	173	105	15,272	535	88%	+ 775	45	78.5	- .30
Kilinsdale Ivanhoe Jack	ABC	36	9	17,691	613	53%	+ 761	29	82.7	+2.15
Sheffield Climax Imperial	MICH	161	86	15,009	519	87%	+ 740	80	81.1	+1.30
Ideal Fury Reflector	NOBA	31	10	18,076	663	50%	+ 733	123	82.0	+2.70
Provin Mtn Ivanhoe Jewel	VABA	78	22	16,512	635	65%	+ 717	44	81.4	+ .90
Mookown Optimist	ABC	319	186	14,817	535	94%	+ 711	50	79.7	+1.45
Penstate Ivanhoe Star	VABA	338	227	14,708	555	94%	+ 703	46	79.5	+1.85
Lime Hollow Burkgov Sensation	VABA	413	229	14,893	546	95%	+ 662	63	78.7	-1.05
Northmoor Leader Hector	ABC	235	141	15,458	588	89%	+ 638	91	78.3	-1.15
Jewelholm Supreme Cyclone	NOBA	706	266	14,812	510	95%	+ 583	183	79.5	+ .20
Skokie Milkway	MICH	66	60	14,600	501	78%	+ 581			
Rosni Letitia Rambler	NEBA	27	22	15,369	549	56%	+ 496			
Druswood Zeus Burke Triune	Md-W.Va	453	190	14,596	527	93%	+ 494	139	79.2	+ .30
Oregon Challenger Zenith	VABA	47	13	16,647	560	52%	+ 494	37	80.9	+ .25
Oregon Challenger Baron	VABA	1426	400	14,633	512	98%	+ 430	405	79.4	+ .35
Fultonway Ivanhoe Wylwyn	NEBA	150	98	14,707	563	87%	+ 399	27	79.0	+ .40
Fultonway Ivanhoe Royal	NEBA	90	66	14,753	562	81%	+ 361	21	79.1	+ .95
Fair Hill Della Dart	Md-W.Va	204	126	13,802	509	91%	+ 323	29	79.8	-1.05
Chinook Fury Hal	Md-W.Va	40	13	16,297	581	53%	+ 325	34	79.5	- .95
Gray View Sky Successor	Louis	46	4	15,142	557	48%	+ 318	35	81.9	+1.15
Pineyhill Galaxy	VABA	642	253	14,548	549	96%	+ 289	186	80.0	+1.10
Corlan Farms Ivanhoe Pioneer	VABA	51	24	15,417	566	59%	+ 289	35	82.6	+1.25
Skokie Regent Duke	NEBA	438	279	14,344	536	96%	+ 259	60	77.7	-1.00
Edgehill Treasure Kit	NOBA	80	11	16,482	623	53%	+ 241	49	82.4	+2.70
Simpson Farm Tidy Gent	VABA	247	158	14,982	552	92%	+ 202	52	81.1	+2.55
Maroy Ivanhoe Leader	NEBA	212	157	14,432	532	91%	+ 188	52	79.4	+ .45
Rosemere Magician Rightoa	NOBA	64	43	14,347	529	75%	+ 187	16	81.1	+3.00
Carnation Ideal Moss Idol	MICH	22	20	13,946	488	54%	+ 164			
Willmil A.B.R. Roxanna Supreme	VABA	279	143	14,448	548	90%	+ 74	54	77.7	-1.35
Lavacres Dictator Defiance	NOBA	205	44	15,736	565	48%	+ 70	196	81.2	+ .10
Milk and Honey Ivanhoe	ABC	730	445	14,508	554	97%	+ 61	214	79.4	+ .85
Hilltop Explorer Climax	MICH	120	91	13,799	502	87%	+ 57	16	78.9	- .70
Pencor G. Ivanhoe Pabst	NEBA	33	24	14,514	515	60%	+ 38			
Segis Spring Farm Surprise	Md-W.Va	82	37	13,429	503	65%	+ 32	53	80.5	+ .45
Bessie B. F. Gypsie Leader	Louis	207	73	14,279	522	86%	+ 30	63	82.0	+ .10
Hayssen Shamrock Rebel	MICH	22	20	14,111	489	52%	+ 29	23	77.8	- .45
Doncroft Majesty	ABC	36	14	15,917	573	46%	+ 22	36	83.3	+2.55
Adohr Golden Beautiboy	MICH	15	14	13,809	483	42%	+ 21	15	81.7	+2.45
Aylmer Olla Maple Bud	NEBA	29	27	14,468	531	59%	- 29	18	78.1	- .55
Harborcrest Smokey	ABC	216	129	14,372	547	90%	- 126	70	79.7	+ .75
Harborcrest Royal Merit	NOBA	56	33	14,151	518	69%	- 143	59	80.3	+1.05
Horse Pen Hill King Sovereign	VABA	378	190	13,651	474	94%	- 180	74	80.8	+1.25
A-Citation Sovereign	Md-W.Va	33	15	13,466	504	53%	- 182	23	82.4	+2.40
Willmil Ivanhoe Bellringer	NEBA	560	246	14,214	537	95%	- 218	179	79.0	- .20
Weavers Sovereign Chief	MICH	15	15	13,503	476	43%	- 265	20	79.1	+ .70
Lime Hollow Burkgov Majesty	NEBA	202	138	14,215	524	91%	- 265	41	77.6	- .85
Hallcrest Follow On Leader	E. Tenn	249	81	13,031	472	90%	- 276	28	79.9	- .50
Rich-Herd Texal Noble	NOBA	88	63	13,969	478	80%	- 298	39	78.7	- .95
Prilly Burke Verman	E. Tenn	19	16	12,347	439	49%	- 338			
Piebe Korndyke Pauline King	Md-W.Va	54	42	13,275	478	71%	- 346	10	78.1	-1.65
Seiling Wayne Rocket	NEBA	105	77	13,845	509	84%	- 349	23	80.2	+1.40
Woodbourne Rag Admiral	NEBA	187	147	13,666	502	90%	- 415	26	80.2	+1.40
Hoosier Magic Cross	E.Tenn	20	12	12,196	439	45%	- 426			
Big Rock Ormsby Triune	NEBA	749	348	13,706	541	97%	- 478	111	78.8	-1.20
Howacres Reflector Model	ABC	66	38	14,495	578	74%	- 498	48	80.4	+ .90
Wis Roburke	NEBA	221	142	13,396	512	91%	- 501			
Woodbourne Con-Man	NOBA	35	7	14,284	568	54%	- 525	25	82.8	+1.15
Sheldon-Mel Ivanhoe Reflection	MICH	74	20	16,357	628	53%	- 646	99	81.9	+1.60
Lavacres Dusty Destiny	ABC	58	42	13,357	463	73%	- 680	10	76.9	-2.75
Salute Summit View	NEBA	193	134	13,671	529	91%	- 719	38	77.9	-1.25
Ebyholme Reflection Master A	NEBA	231	154	13,462	493	91%	- 752	95	80.0	+1.45
Waybrook Paramount	ABC	56	23	14,359	560	66%	- 890	48	81.8	+1.15
Swampy Hollow R. A. Champion	NEBA	34	29	12,683	514	62%	- 963			
Milk and Honey *Rag Apple Hope	ABC	14	13	13,206	519	41%	-1016			

PRODUCTION AND TYPE INFORMATION ON PROVEN HOLSTEIN SIRES AVAILABLE TO VIRGINIA DAIRYMEN

February 1969

CARNATION BREEDING SERVICE (CBS)

Name of Sire	Stud	Daus.	Herds	#Milk	#Fat	% Reli- ability	Pred. Diff.	Type Score		
								Pairs	Avg.	Dif/Exp
Polytechnic Master Bond	CBS	25	6	19,424	647	41%	+1008	17	82.8	+2.90
Luxwood Carnation Master	CBS	233	131	14,201	490	90%	+ 686	4	81.0	+1.85
Kyland Crescent Premier	CBS	30	14	15,151	553	58%	+ 656			
Carnation Pilot He-Man	CBS	95	12	15,894	532	49%	+ 627	11	82.0	+2.45
Pineyhill Majority	CBS	463	239	14,788	576	93%	+ 240	162	89.9	+2.25
Hayssen Fond Master	CBS	400	275	14,513	535	93%	+ 76	154	80.1	+ .45
Carnation Peace-Maker	CBS	29	10	15,670	559	52%	+ 28	17	81.5	+ .15
Carnation Butter Boy Count	CBS	485	241	14,059	500	95%	- 16	152	81.6	+1.90
Willards Revelon	CBS	42	6	15,000	575	43%	- 21	37	81.4	+1.50
Verpana Farm Regent Mark	CBS	20	5	15,354	575	40%	- 31	20	83.7	+2.55
Kyland Gallant Count	CBS	35	13	14,541	571	49%	- 175	27	81.6	+ .40
Willards Homestead Revelation	CBS	124	25	13,320	476	56%	- 212	29	83.9	+3.65
Gorlib Ivanhoe Major	CBS	50	40	14,275	490	69%	- 249	37	79.7	+ .35
Carnation Homestead Reflection	CBS	20	11	14,406	562	41%	- 269	25	81.4	+1.70
Arwyn Strathmore George	CBS	195	110	13,552	489	89%	- 299	41	81.2	+1.40
Glenafton Rag Apple Priority	CBS	122	83	13,791	486	86%	- 284	25	80.7	- .40
Gray View X Nanking	CBS	68	43	13,136	485	75%	- 298			
Rock River Paragon	CBS	145	89	13,423	488	86%	- 336			
Rock River Pacemaker	CBS	46	37	12,655	463	70%	- 577			
Carnation Ideal Newcomer	CBS	65	46	13,299	481	74%	- 632	20	80.0	- .25

CURTISS BREEDING SERVICE (CURT)

Name of Sire	Stud	Daus.	Herds	#Milk	#Fat	% Reli- ability	Pred. Diff.	Type Score		
								Pairs	Avg.	Dif/Exp
Council Rock Admiral Stylist	Curt	99	69	15,632	535	81%	+1001	45	78.5	- .25
Skokie Champion	Curt	277	192	15,413	541	93%	+ 889	55	77.9	-1.25
Mooseheart Alliance	Curt	384	270	15,172	553	95%	+ 787	80	79.8	+ .75
Skokie Famous Duke	Curt	1473	874	15,108	560	99%	+ 785	331	79.2	- .50
Winfarm Rag Apple Magic	Curt	49	12	17,243	619	53%	+ 772	44	82.8	+2.10
Skyway Valla Vista Double	Curt	50	17	15,699	575	57%	+ 671	50	81.9	- .15
Ellbank Admiral Burke Ideal	Curt	72	26	15,929	570	54%	+ 546	55	81.5	+1.25
Paclamar Ivanhoe Black Eagle	Curt	22	10	15,853	587	40%	+ 399	20	84.2	+3.20
Glenafton Rag Apple Charmer	Curt	389	223	15,171	540	89%	+ 287	412	80.3	+ .75
Rosafe Citation R	Curt	359	235	14,795	521	94%	+ 180	105	83.9	+2.75
Cloverbrook Prince	Curt	257	171	15,173	557	90%	+ 154	188	80.3	+1.00
Tidy Burke Culmination	Curt	276	207	14,472	492	93%	+ 139	88	79.0	-1.20
King Ormsby Osborndale	Curt	496	344	14,046	508	96%	+ 103	46	78.3	-1.60
Crescent Beauty Triumph	Curt	731	422	14,223	519	96%	+ 26	358	80.9	+1.10
Ravenglen Admiral Triune	Curt	44	4	14,753	558	41%	- 15	38	80.7	+ .75
Citation Chambric Marshall	Curt	176	134	14,517	527	89%	- 33	159	79.6	+ .35
Woodbourne Emphasis	Curt	51	18	13,133	477	45%	- 49	66	80.1	+ .55
Brigeen Chief Flying Cloud	Curt	432	131	15,258	579	89%	- 63	329	81.5	+1.10
Skokie Black Magic	Curt	36	18	14,060	559	54%	- 88	41	79.9	- .65
Lavacres Dawn Merrimac	Curt	93	54	14,444	522	72%	- 185	58	81.6	+2.00
Athlone Admiral Cochise	Curt	155	124	13,866	506	90%	- 232	13	77.2	-3.55
Archambault Sovereign Symbol	Curt	34	14	14,082	515	58%	- 356	24	80.5	- .30
Gray View X Skylander	Curt	62	52	13,482	485	74%	- 478	24	79.1	+1.05
Penstate Star Man	Curt	1358	777	14,104	525	98%	- 478	599	80.3	+1.50
Gray View Skycross	Curt	268	206	13,903	519	93%	- 516	206	80.1	+1.30
Ormsby Mechthide Seymour	Curt	123	97	13,508	465	86%	- 525	14	79.4	- .70
Skokie Satellite	Curt	52	39	13,697	509	70%	- 631	30	78.4	- .20
Gray View Criscross	Curt	269	173	14,235	572	89%	- 790	286	83.1	+1.75
Dee Ann Roebuck Baron	Curt	37	11	12,171	490	41%	- 910	32	84.3	+2.80

PRODUCTION AND TYPE INFORMATION ON PROVEN HOLSTEIN SIRES AVAILABLE TO VIRGINIA DAIRYMEN

February 1969

AMERICAN BREEDERS SERVICE (ABS)

Name of Sire	Stud	Daus.	Herds	#Milk	#Fat	% Reli- ability	Pred. Diff.	Type Score		
								Pairs	Avg.	Dif/Exp
Westside AB Seaman	ABS	15	12	19,917	705	41%	+1689			
Gettie Lancer Piebe	ABS	25	17	18,037	657	52%	+1310			
Bradstead Rosni Pabst Tony	ABS	31	17	17,769	619	55%	+1278	12	76.9	-1.90
FleetrIDGE Monitor	ABS	42	6	17,545	653	48%	+1203	12	82.1	+ .35
Diamond S Mr. Copia Var D	ABS	34	6	18,394	634	40%	+1185	34	81.6	+ .35
Kyland Premier Segis Leader	ABS	129	76	15,978	553	83%	+ 912	54	79.3	- .05
Utag Dagon Ex Alan	ABS	18	16	17,297	610	47%	+ 828			
Forest Greene Sears Mary	ABS	41	28	17,376	611	66%	+ 783			
Birdlawn Togus Remes	ABS	24	22	15,739	588	54%	+ 736			
Zimmerman Alstar Pilot	ABS	217	68	16,195	631	84%	+ 730	60	79.8	+ .75
Dairy Lou Mataul Paul	ABS	22	18	16,095	564	52%	+ 688			
Frickles Jule Butter Boy	ABS	25	9	15,631	563	41%	+ 651			
Macintire Pathfinder Prince	ABS	223	142	15,669	560	88%	+ 600	75	76.9	-2.70
Gray View Skyliner Nat	ABS	285	149	15,370	573	91%	+ 575	58	78.4	-1.00
Fredelyn Farms Inka Revelation	ABS	34	25	16,022	590	61%	+ 554			
Forest Lee Centurion Rocket	ABS	35	16	16,043	565	47%	+ 520	34	82.4	+2.80
Lone Ranch Ideal Kate Ward	ABS	30	8	17,277	593	45%	+ 516	22	80.7	+1.75
Don Augur True Type Model	ABS	21	13	17,427	624	50%	+ 510	17	82.6	+2.75
Genegiant Confident Traveler	ABS	22	18	16,236	573	52%	+ 446			
SRD Advancer Three	ABS	394	178	15,062	506	92%	+ 403	171	81.7	+2.00
Eastside Dean Masterpiece	ABS	21	13	16,997	614	49%	+ 390			
Lavacres Dusty Merit	ABS	78	23	15,095	565	43%	+ 380	63	79.9	- .10
Skokie Design Mister Joy	ABS	32	9	15,159	587	44%	+ 365	33	81.6	+1.05
Creek Curve Dunloggin Piebe	ABS	19	14	16,395	600	48%	+ 327			
Bud Ranch ABS De Kal	ABS	16	13	15,379	578	43%	+ 327			
Fultonway Schoolmaster	ABS	35	27	15,520	590	63%	+ 302	13	77.5	-2.85
Sunny R Glamour Boy Amos	ABS	18	17	15,458	538	47%	+ 270			
Don Augur Mother Marthas Pride	ABS	33	16	17,140	618	59%	+ 266	23	82.0	+2.80
Busy Acres Roburke Sears	ABS	15	14	14,991	526	42%	+ 263			
Howard Farm Sir Roburke TV	ABS	161	91	14,591	550	84%	+ 236	36	78.2	-1.70
Fobes Monogram King	ABS	41	23	15,015	533	58%	+ 219			
Willands Canary Prince	ABS	355	203	14,876	538	94%	+ 213	68	79.0	+ .05
Patsy Mammoth Spring Progress	ABS	24	22	15,309	562	54%	+ 196			
Chairalane RA Transmitter	ABS	675	386	14,397	529	97%	+ 193	43	78.8	- .25
Skokie Famous Vicar	ABS	62	11	15,498	612	44%	+ 133	49	81.3	+1.00
Saxojac Beulah Span Saxie	ABS	21	15	14,654	537	49%	+ 88			
Fultonway Electra	ABS	16	14	15,297	548	43%	+ 61			
Mallory Admiral Lucifer	ABS	26	17	15,541	580	55%	+ 51	26	79.7	- .65
Star Plain View Profile	ABS	68	41	14,941	552	75%	+ 47	23	80.6	+ .95
Miller Supreme Duke	ABS	15	12	14,342	525	41%	+ 11			
Irvington Hansel	ABS	29	5	16,427	601	40%	+ 0	21	83.5	+3.50
Ray Zel Tex Milestone Burkgov	ABS	27	22	15,127	534	57%	- 32			
Sandhurst Neptune Jason	ABS	20	17	15,200	578	50%	- 41			
Hasselkus Transmitter Skyliner	ABS	21	17	14,806	539	51%	- 83			
Lane Elm Dean Wayne	ABS	678	390	13,842	495	97%	- 160	82	80.5	+ .20
Don Augur Wis Ideal	ABS	22	13	16,395	588	53%	- 168	12	81.3	+1.00
Starland Span Black Rock	ABS	18	16	14,324	531	47%	- 257			
Kremeier Lochinvar Ormsby Dan	ABS	50	12	14,389	515	51%	- 261			
Bud Ranch Aldean Rag Apple	ABS	21	17	14,517	538	50%	- 356			
Gladtime Sunny Knight	ABS	21	17	13,959	497	50%	- 459			