



US008624541B2

(12) **United States Patent**
Ramu et al.

(10) **Patent No.:** **US 8,624,541 B2**
(45) **Date of Patent:** **Jan. 7, 2014**

(54) **SYSTEM AND METHOD FOR CONTROLLING FOUR-QUADRANT OPERATION OF A SWITCHED RELUCTANCE MOTOR DRIVE THROUGH A SINGLE CONTROLLABLE SWITCH**

(75) Inventors: **Krishnan Ramu**, Blacksburg, VA (US); **Keunsoo Ha**, Seoul (KR); **Sung-Yeul Park**, Blacksburg, VA (US)

(73) Assignee: **Virginia Tech Intellectual Properties, Inc.**, Blacksburg, VA (US)

(*) Notice: Subject to any disclaimer, the term of this patent is extended or adjusted under 35 U.S.C. 154(b) by 10 days.

(21) Appl. No.: **13/460,911**

(22) Filed: **May 1, 2012**

(65) **Prior Publication Data**

US 2013/0009589 A1 Jan. 10, 2013

Related U.S. Application Data

(62) Division of application No. 11/718,326, filed as application No. PCT/US2005/035423 on Oct. 3, 2005, now Pat. No. 8,203,302.

(60) Provisional application No. 60/614,547, filed on Oct. 1, 2004.

(51) **Int. Cl.**

H02P 1/46 (2006.01)
H02P 3/18 (2006.01)
H02P 6/00 (2006.01)

(52) **U.S. Cl.**

USPC **318/701**; 318/254.1; 318/258; 318/261; 318/703

(58) **Field of Classification Search**

USPC 318/701, 703, 254.1, 258, 261
See application file for complete search history.

(56) **References Cited**

U.S. PATENT DOCUMENTS

4,500,824 A *	2/1985	Miller	318/701
4,684,867 A	8/1987	Miller et al.	
4,763,056 A	8/1988	Byrne et al.	
4,812,728 A *	3/1989	Yang	318/760
4,862,053 A *	8/1989	Jordan et al.	318/786
5,075,610 A	12/1991	Harris	
5,864,477 A	1/1999	Webster	

(Continued)

OTHER PUBLICATIONS

International Search Report with Written Opinion issued Mar. 21, 2006 in counterpart International Application No. PCT/US2005/035423.

(Continued)

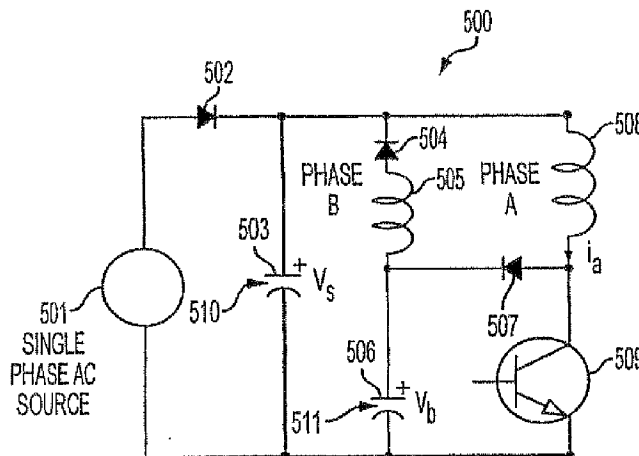
Primary Examiner — Erick Glass

(74) *Attorney, Agent, or Firm* — NSIP Law

(57) **ABSTRACT**

Regulating the speed of a two-phase switched reluctance machine (TPSRM) rotor includes selecting either a motoring mode or braking mode of operation for the TPSRM, regulating the rotor speed, when the motoring mode is selected, using a control signal cooperatively produced by a speed control feedback loop and a current control feedback loop; and regulating the rotor speed, when the braking mode is selected, using a control signal produced by the current control feedback loop without the cooperation of the speed control feedback loop. The speed control feedback loop uses an established speed control signal and a signal indicative of the rotor's speed to dynamically adjust a first parameter governing the control signal. The current control feedback loop uses an established current control signal and a signal indicative of the current flowing through a stator winding of the TPSRM to dynamically adjust a second parameter governing the control signal.

8 Claims, 16 Drawing Sheets



(56)

References Cited

7,747,146 B2 * 6/2010 Milano et al. 388/811

U.S. PATENT DOCUMENTS

OTHER PUBLICATIONS

5,900,712 A 5/1999 Disser et al.

6,181,092 B1 1/2001 Turner

6,201,368 B1 3/2001 Webster

7,590,334 B2 * 9/2009 Yabusaki et al. 388/811

Krishnan Ramu, "Switched Reluctance Motor Drives," CRC Press, pp. 1-7, 2001.

* cited by examiner

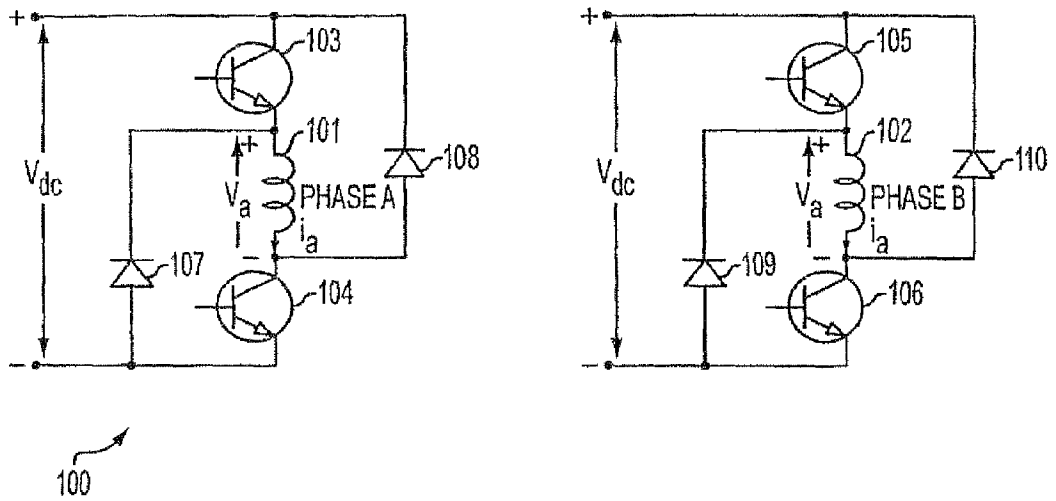


FIG. 1
RELATED ART

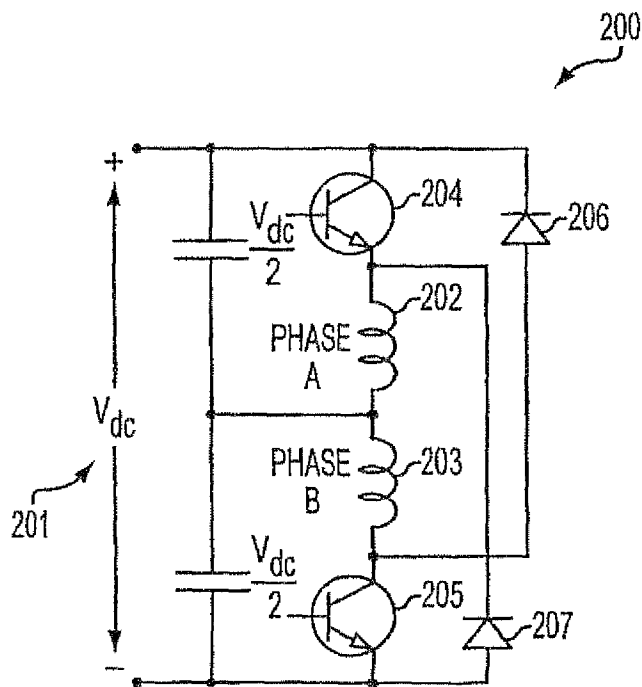


FIG. 2
RELATED ART

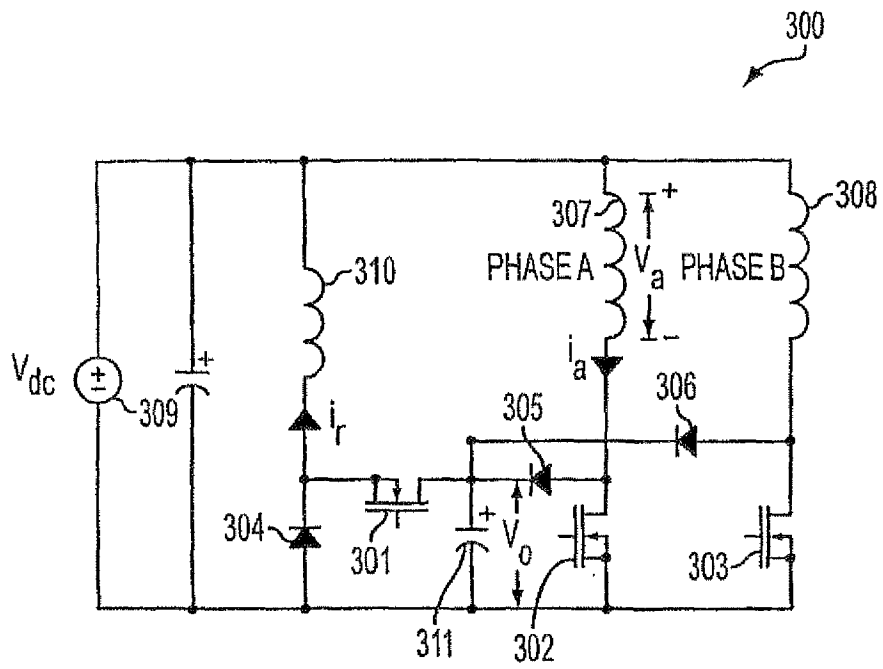


FIG. 3
RELATED ART

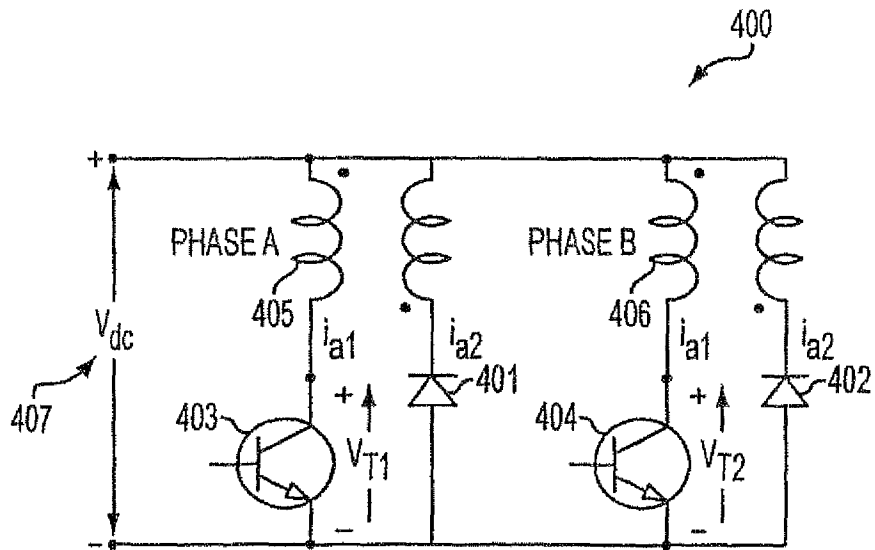


FIG. 4
RELATED ART

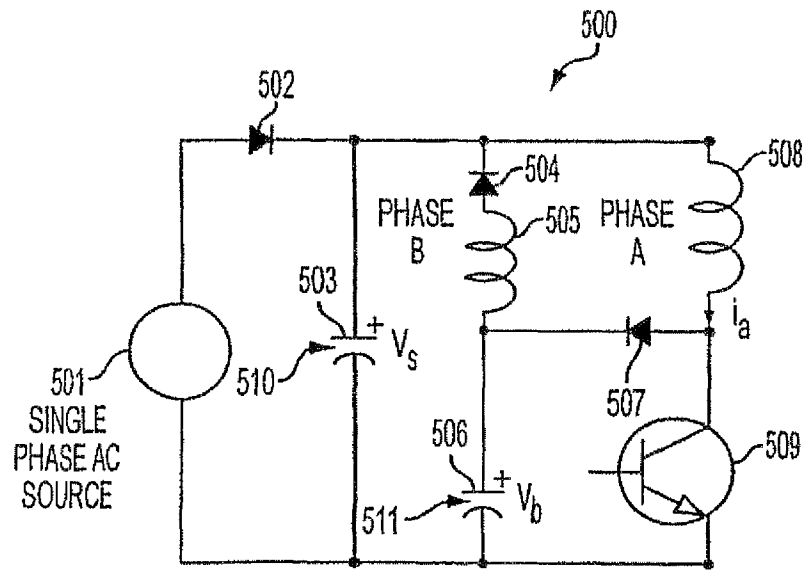


FIG. 5

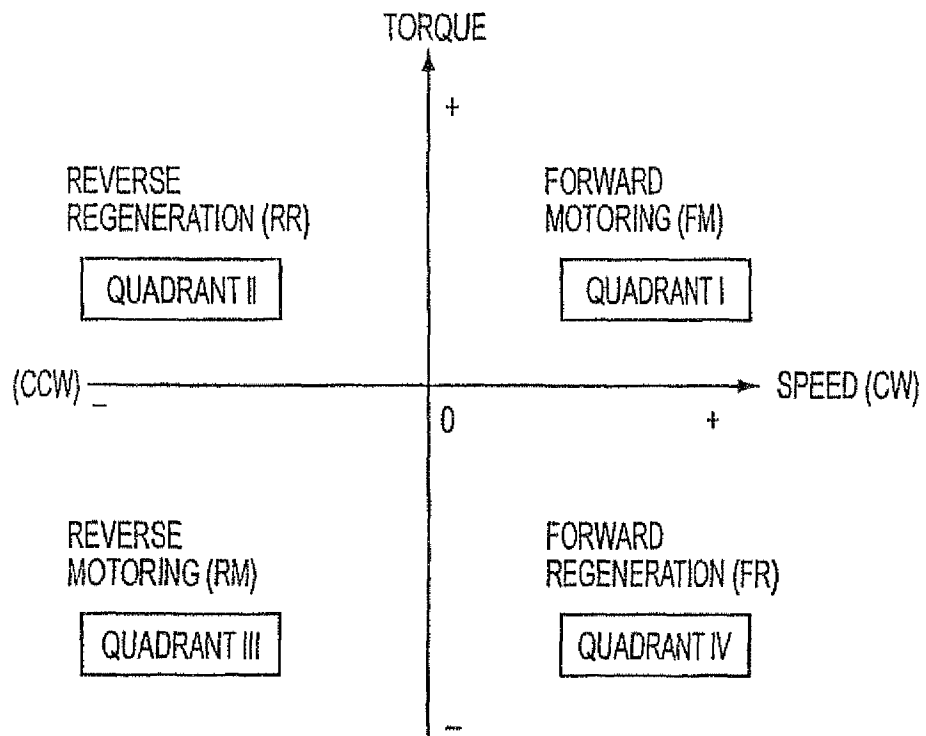
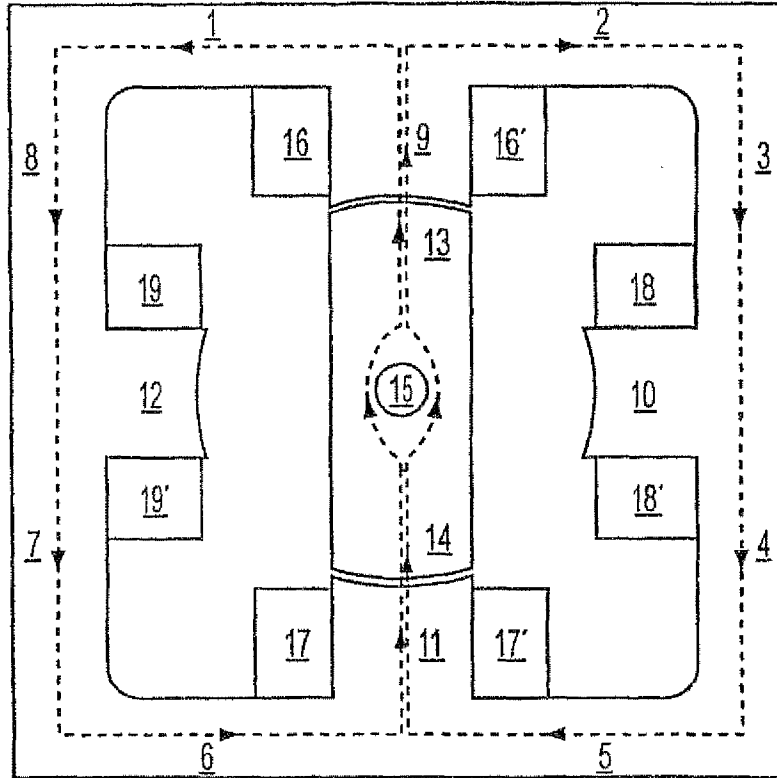


FIG. 6



LEGEND

1 TO 8: SEGMENTS OF BACK IRON
 9 AND 11: STATOR POLES FOR PHASE A
 10 AND 12: STATOR POLES FOR PHASE B
 13 AND 14: ROTOR POLES
 15: ROTOR SHAFT
 REGION AROUND 15: ROTOR BACK IRON
 16 AND 16': STATOR COIL FOR POLE 9 WITH CURRENT
 POLARITIES OF POSITIVE AND NEGATIVE,
 RESPECTIVELY (PART OF PHASE A)
 17 AND 17': SAME AS FOR POLE 11 (PART OF PHASE A)
 18 AND 18': SAME AS FOR POLE 10 (PART OF PHASE B)
 19 AND 19': SAME AS FOR POLE 12 (PART OF PHASE B)

FIG. 7A
 RELATED ART

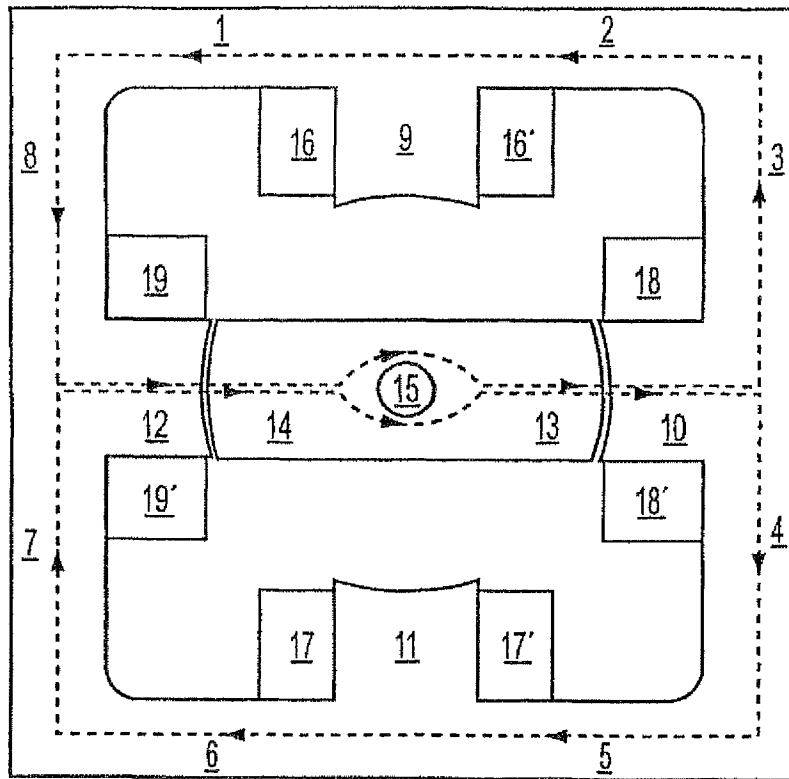


FIG. 7B
RELATED ART

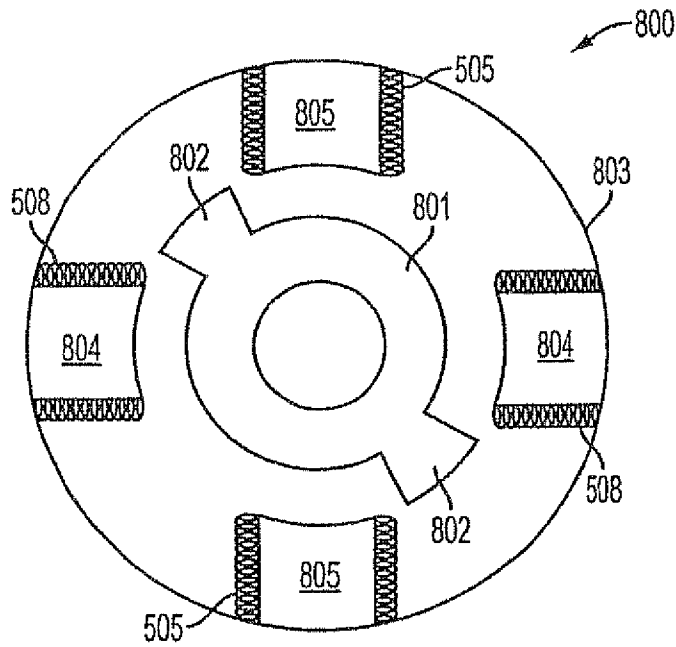


FIG. 8

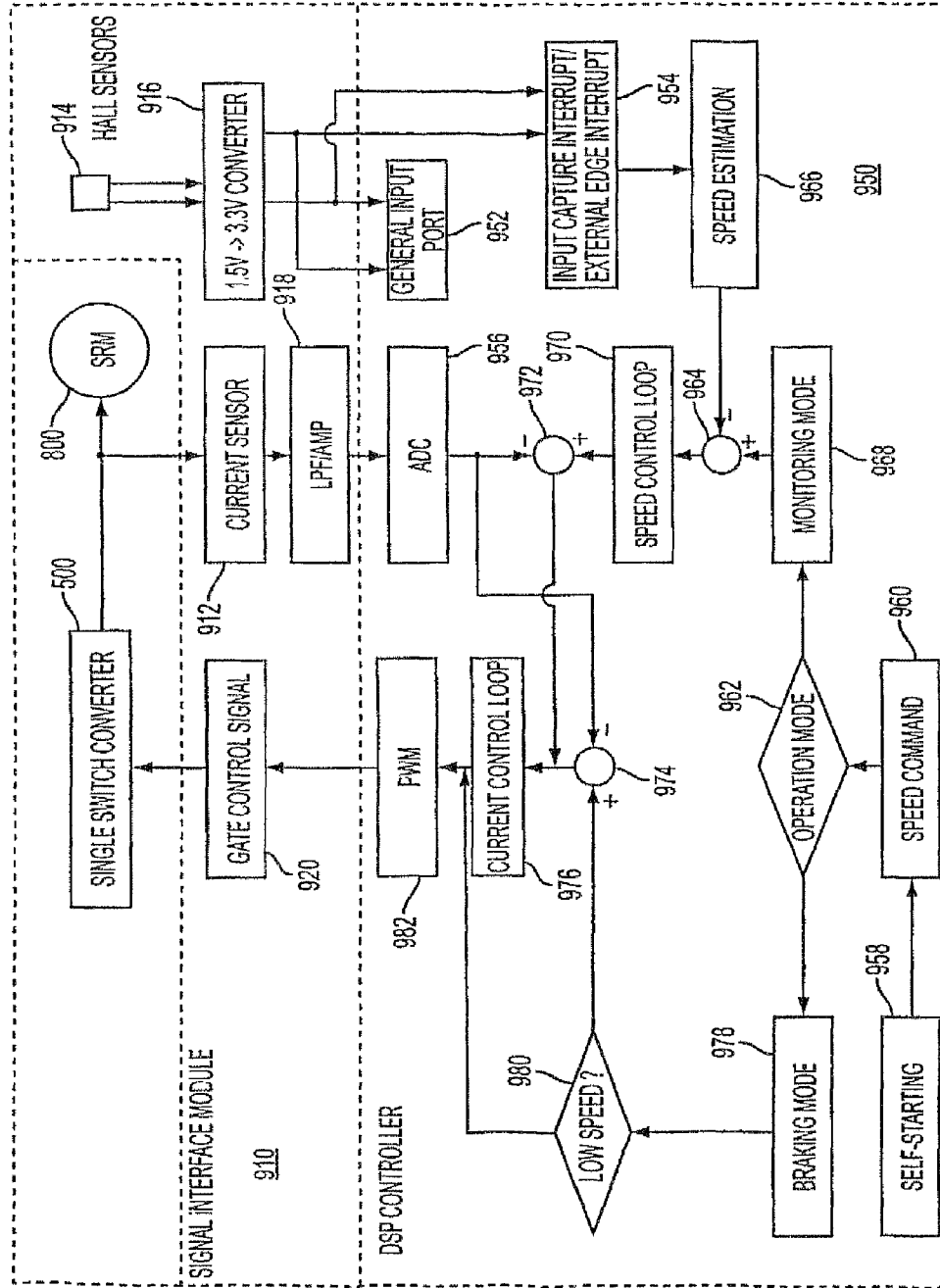


FIG. 9

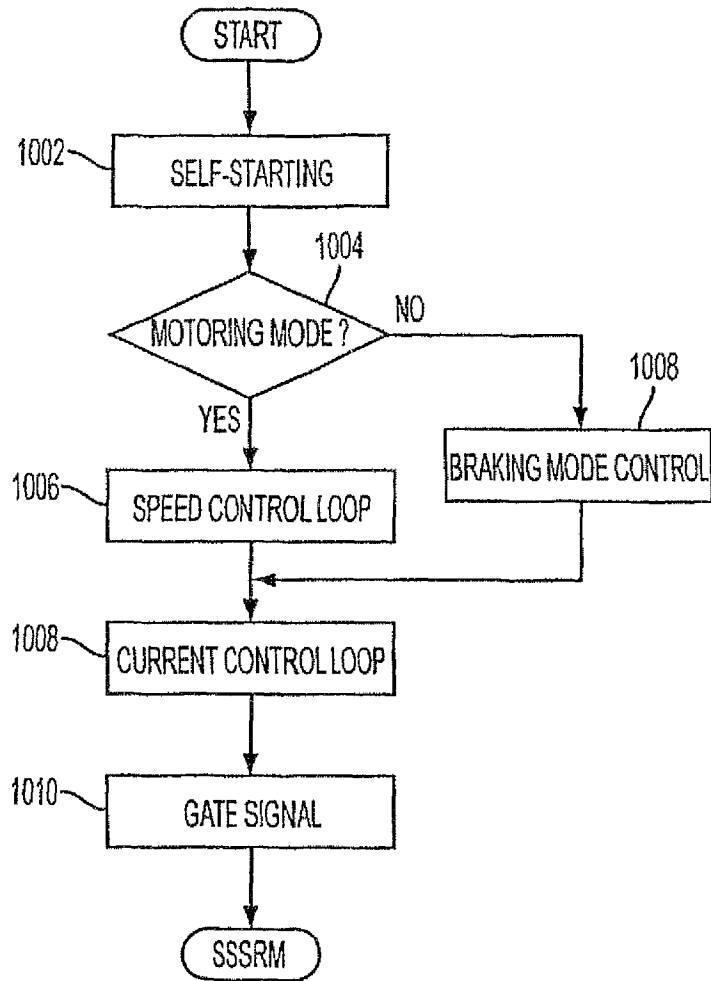


FIG. 10

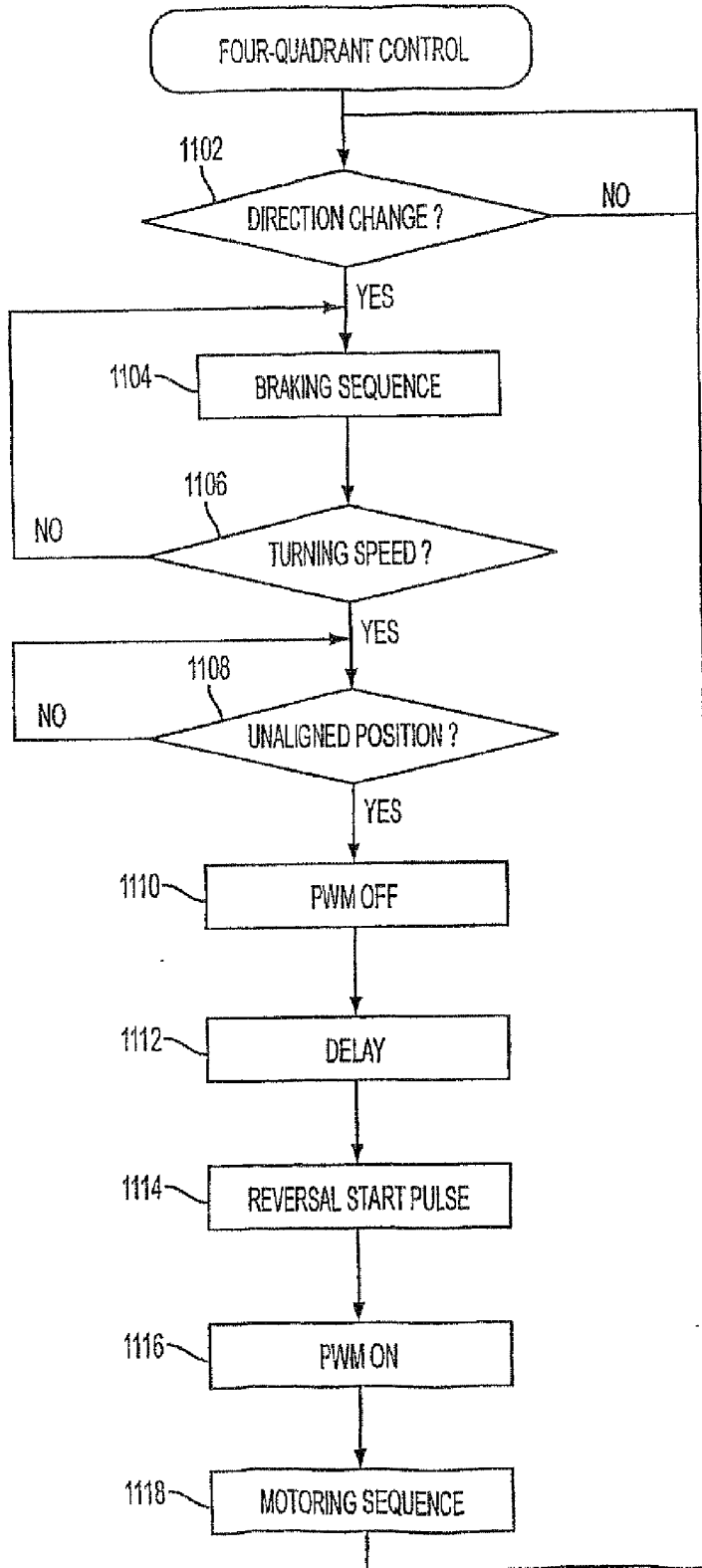


FIG. 11

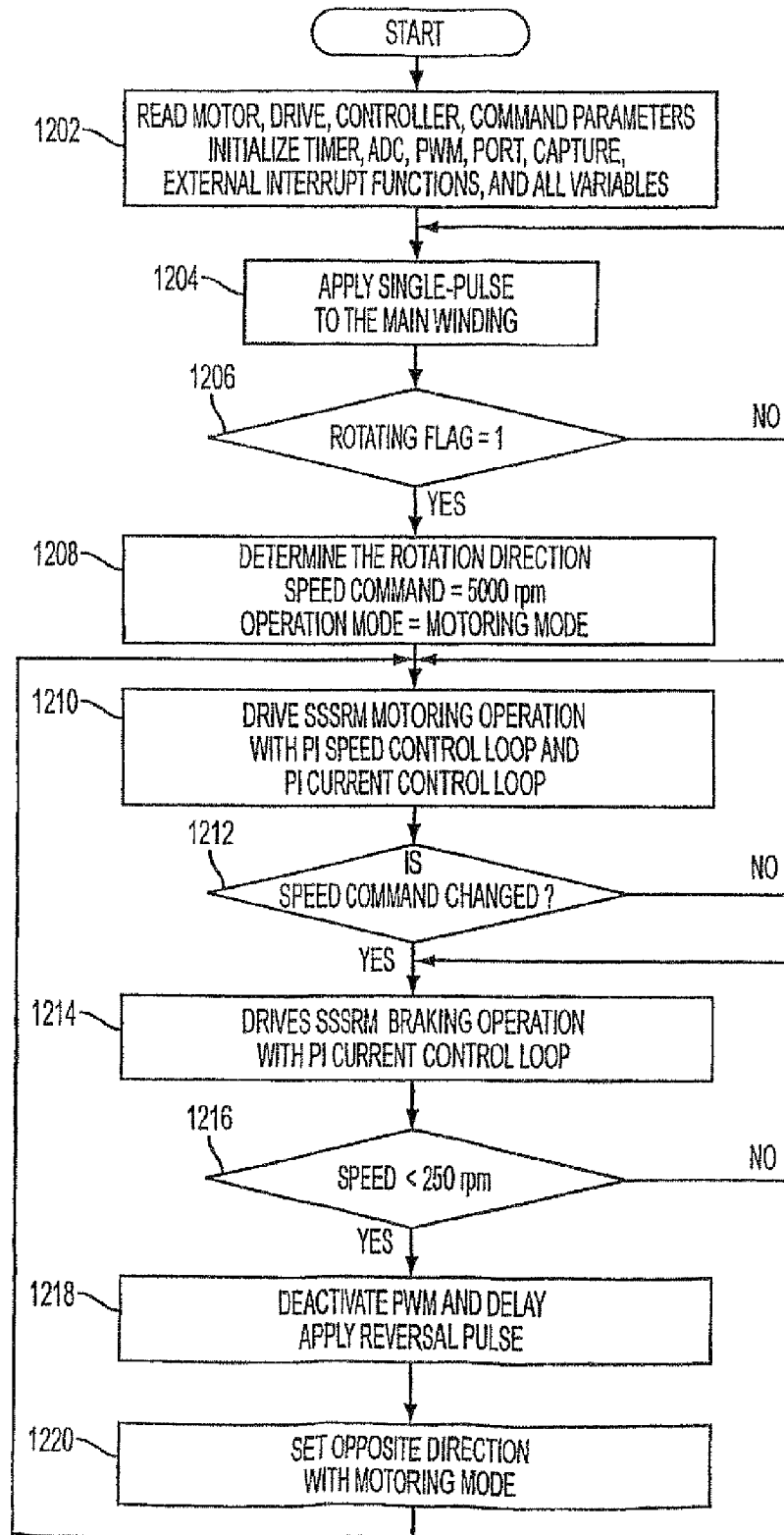


FIG 12

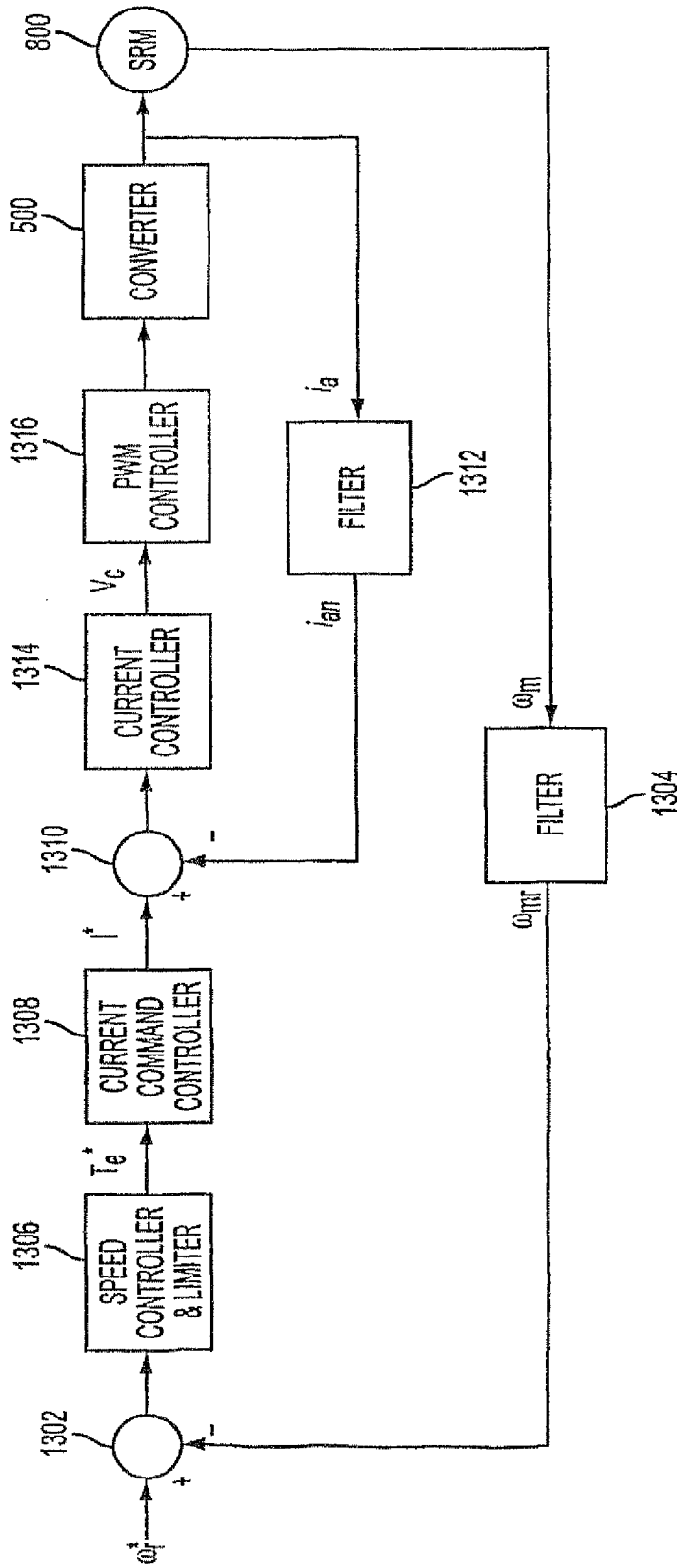


FIG. 13

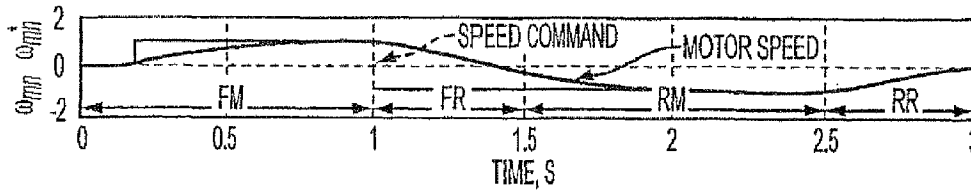


FIG. 14A

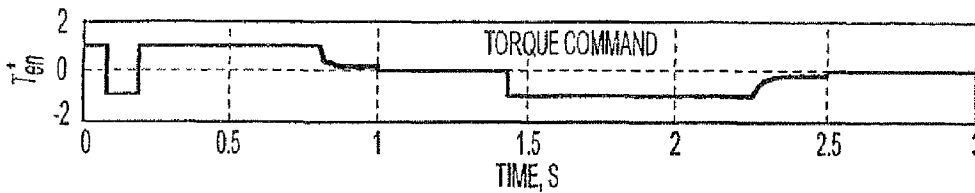


FIG. 14B

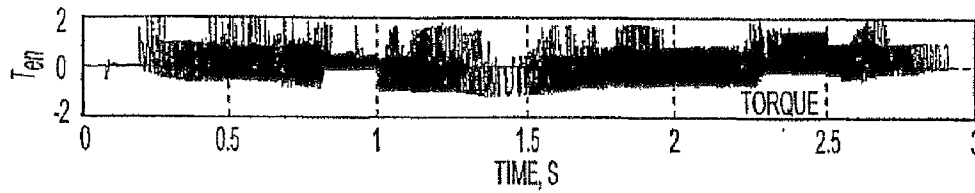


FIG. 14C

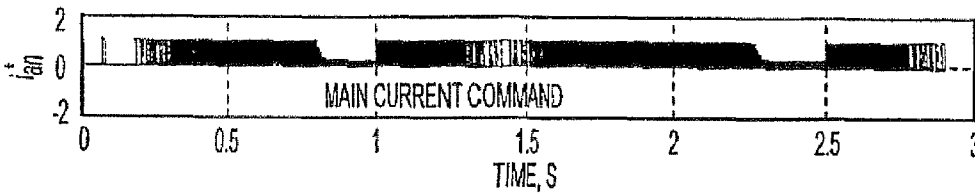


FIG. 14D

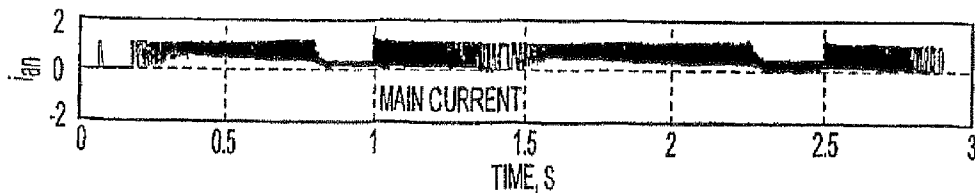


FIG. 14E

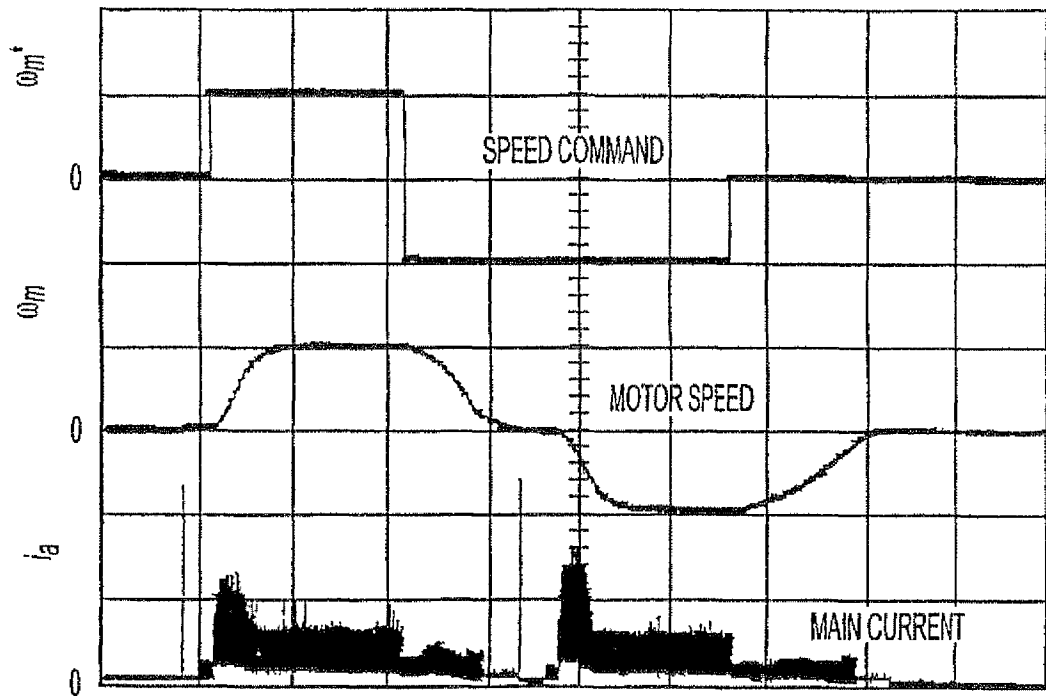


FIG. 15

1

**SYSTEM AND METHOD FOR
CONTROLLING FOUR-QUADRANT
OPERATION OF A SWITCHED
RELUCTANCE MOTOR DRIVE THROUGH A
SINGLE CONTROLLABLE SWITCH**

CROSS-REFERENCE TO RELATED
APPLICATIONS

This application: (a) is a divisional application of U.S. patent application Ser. No. 11/718,326, filed Apr. 30, 2007 and having a 35 USC §371(c) date of Feb. 9, 2009, which is a national phase application of international application PCT/US2005/035423, filed Oct. 3, 2005, and claims priority to U.S. Provisional Application No. 60/614,547, filed Oct. 1, 2004, (b) claims the priority of these prior applications, and (c) incorporates by reference these prior applications in their entirety. Additionally, the application incorporates by reference the disclosures provided in Applicant's PCT International Application Nos. PCT/US03/16627, PCT/US03/16628, PCT/US03/16629, PCT/US03/16630, and PCT/US03/16631.

FIELD OF THE INVENTION

The present invention relates to a method and system for controlling the operation of a two-phase switched reluctance machine (TPSRM). More specifically, the invention relates to controlling the TPSRM with a power converter employing a single controllable switch.

BACKGROUND OF THE RELATED ART

A two-phase switched reluctance machine (TPSRM) is a switched reluctance machine (SRM) with two phases, phases A and B, displaced from each other by 180 degrees/n, where n is the number of stator poles per phase. FIGS. 7(a) and 7(b) illustrate a two-phase SRM 700 of the related art. TPSRM 700 has four stator poles 9-12 and two rotor poles 13, 14 and is characterized as a two-phase machine with a 4/2 stator/rotor pole combination (i.e., 4 stator poles and 2 rotor poles). The rotor rotates about a rotor shaft 15.

FIG. 7(a) illustrates TPSRM 700 and its flux paths through back iron segments 1-8, stator poles 9, 11, and rotor poles 13, 14 during the excitation of phase A. FIG. 7(b) illustrates TPSRM 700 and its flux paths through back iron segments 1-8, stator poles 10, 12, and rotor poles 13, 14 during the excitation of phase B. The phase A excitation is induced by winding 16, 16' around stator pole 9 and another winding 17, 17' on the diametrically opposed stator pole 11. Winding 16, 16' and winding 17, 17' may be connected in series or in parallel. The phase B excitation is induced by winding 18, 18' around stator pole 10 and another winding 19, 19' on the diametrically opposed stator pole 12. Winding 18, 18' and winding 19, 19' may similarly be connected in series or in parallel. In each of FIGS. 7(a) and 7(b), the rotor poles are positioned in alignment with the stator poles whose windings are being energized.

Excitation of the phase B windings is initiated when rotor pole 14 is positioned between stator poles 9 and 10 and rotor pole 13 is positioned between stator poles 11 and 12. The rate of change of inductance will be positive in this region and, hence, positive torque will be produced. As a result, rotor poles 14 and 13 will rotate clockwise (CW) toward the phase B stator poles 10 and 12, respectively. When rotor poles 14 and 13 pass around phase B stator poles 10 and 12, respec-

2

tively, the phase A windings will be excited, causing rotor poles 14 and 13 to rotate CW toward the phase stator poles 11 and 9, respectively.

To reverse the direction of rotation, phase B windings 18, 18' and 19, 19' are excited when rotor pole 14 is between stator poles 12 and 9 and rotor pole 13 is between stator poles 10 and 11. If the rotor poles are closer to phase B stator poles 10 and 12, the rotor will rotate toward them resulting in counter-clockwise (CCW) rotation. Therefore, controlling the rotor's direction of rotation involves the independent control of the phase A and B excitations. If such independent control of individual phase excitation is not possible, there is no control method that can reverse the machine's rotor rotation from one direction to another.

Related art TPSRMs are driven by two or four controllable switch-based power converters. Some examples are described below.

FIG. 1 illustrates a related art asymmetric power converter 100 for driving a two-phase SRM. Power converter 100 has two controllable and two uncontrollable power devices for each phase winding 101, 102 of the SRM. Therefore, four controllable 103-106 and four uncontrollable 107-110 power devices are required for power converter 100 to operate. The primary advantage of power converter 100 is that it gives full controllability in terms of its ability to apply full positive or negative direct current (dc) link voltage, and, therefore, it does not diminish or restrict any operating mode of the SRM. The disadvantage of this power converter topology is that it uses eight power devices. A more detailed description of power converter 100's circuit operation may be found in "Switched Reluctance Motor Drives", R. Krishnan, CRC Press, June 2001.

FIG. 2 illustrates a related art single switch-per-phase power converter 200 for driving a two-phase SRM. Power converter 200's circuit topology is based on splitting a dc input source voltage 201 equally to the machine side power converter. This results in a circuit requiring one controllable and one uncontrollable power device per phase winding 202, 203. Therefore, overall, power converter 200 requires two controllable power devices 204, 205 and two uncontrollable power devices 206, 207 for a two-phase SRM. The major advantage of this circuit design is that it uses a reduced number of power devices (e.g., a total of four) compared to the asymmetric converter. The disadvantage of this circuit is that it reduces the available dc source voltage by half and, therefore, doubles the current rating required for the devices and for the machine, resulting in low efficiency machine operation. A fuller description of this circuit may be found in "Switched Reluctance Motor Drives", R. Krishnan, CRC Press, June 2001.

Some variations of the single-switch-per-phase topologies are described by Harris in U.S. Pat. No. 5,075,610, by Webster in U.S. Pat. No. 5,864,477, and by Disser et al. in U.S. Pat. No. 5,900,712. Harris describes a circuit with a single-switch-per-phase topology that requires more than one diode per phase and additionally requires more than one dc link capacitor. Also, the commutating voltages to the phase windings of Harris' power converter are always less than the source dc voltage in this circuit. These are severe limitations.

Webster and Disser each describe a single-switch-per-phase topology requiring two capacitors for storing energy in the circuit. Moreover, these topologies do not provide for a common emitter connection of the switches, thereby creating an isolation requirement for the gate drive circuits and a higher cost for the additional components. As a result of the above-mention and other factors, these circuits are strongly limited to low cost variable speed applications.

FIG. 3 illustrates a related art C-Dump power converter 300 for driving a two-phase SRM. Power converter 300's circuit uses three controllable power devices 301-303 and three uncontrollable diodes 304-306, resulting in the use of six power devices. This is an intermediate circuit between those illustrated in FIGS. 1 and 2. The operating modes are somewhat restricted for this circuit, since it can apply a full dc source voltage 309 to machine windings 307, 308 only in the positive direction. Furthermore, this circuit requires an external inductor 310 or a resistor (not shown) to dissipate the energy stored in a C-dump capacitor 311. Use of external inductor 310 increases the cost, whereas the use of the power resistor (not shown) will result in a lower efficiency of the system and higher package volume, due to increased thermal considerations. Therefore, this circuit is not ideal for use with two-phase SRMs. A more detailed description of this circuit may be found in "Switched Reluctance Motor Drives", R. Krishnan, CRC Press, June 2001 and in Miller et al., U.S. Pat. No. 4,684,867, dated Aug. 4, 1987.

FIG. 4 illustrates a related art single switch-per-phase power converter 400 for driving a two-phase SRM. Power converter 400 requires one uncontrolled power device 401, 402 and one controlled power device 403, 404 per phase 405, 406, and therefore, requires four power devices to function. Furthermore, power converter 400 requires a special winding in the machine, known as a bifilar winding. This special winding increases the copper volume in the machine windings, resulting in increased cost for the machine. Additionally, power switches 403, 404 experience higher voltage stresses due to the leakage inductance between the windings of each respective phase. This leakage inductance can be minimized but cannot be eliminated in a practical machine. Therefore, this converter circuit is not widely used, despite the fact that a full dc source voltage 407 can be impressed on the machine with full controllability of the current. A more in depth description of this circuit may be found in "Switched Reluctance Motor Drives", R. Krishnan, CRC Press, June 2001 and in Miller, U.S. Pat. No. 4,500,824, dated Feb. 19, 1985.

All other heretofore known two-phase power converter circuit topologies fall into one of the above-described categories, in terms of the total number of power devices required for their operation. From the foregoing, it may be seen that a minimum of two controllable power devices are required for operating a related art two-phase SRM.

Generally speaking though, commercial power converters used to drive a two-phase SRM usually have more than two controllable switches and more than two diodes. Circuits requiring only two controllable switches and two diodes have the disadvantages of high power loss, low efficiency, and a bifilar winding in the machine, thereby reducing the power density of the machine. Therefore, existing solutions are not attractive with regard to considerations of high efficiency operation, full range of speed control, compactness in the converter's packaging and, most importantly of all, the overall cost of the system.

A fundamental challenge in power converter development has been to reduce the number of power devices, both controllable and uncontrollable, to a level corresponding to that of a single-quadrant chopper drive, such as is commonly used in a dc motor drive or in a universal motor drive. A description of these drives is provided in "Switched Reluctance Motor Drives", R. Krishnan, CRC Press, June 2001. When the number of power devices has been reduced to this level, a brushless SRM drive becomes commercially competitive for variable speed applications. Moreover, the brushless SRM has the superior advantage of high efficiency, since there are no brushes and commutators in the SRM. Also, the brushless

SRM is further endowed with high-speed operability, high reliability, maintenance-free operation, greater overload capability and, most of all, a cost advantage over the dc motor drive.

All reference material cited herein is hereby incorporated into this disclosure by reference.

SUMMARY OF THE INVENTION

An object of the present invention is to overcome the above-described problems and limitations of the related art.

Another object of the invention is to provide a method and system for controlling the speed of a two-phase switched reluctance machine (TPSRM) with a power converter having only one controllable switch.

Still another object of the invention is to provide speed control for a TPSRM, controlled by a power converter having only one controllable switch, during the transition from clockwise to counter-clockwise rotation and vice versa when the TPSRM is operating as a generator.

A further object of the invention is to provide speed control for a TPSRM, controlled by a power converter having only one controllable switch, so as to recover mechanical energy from the machine's inertia and that of its load and convert this energy to electrical energy so as to achieve the effect of an electric brake.

A further object of the invention is to provide speed control for a TPSRM, controlled by a power converter having only one controllable switch, so as to operate the TPSRM in all or a subset of its four-quadrant torque-versus-speed modes of operation, which are forward motoring, forward regeneration, reverse motoring, and reverse regeneration.

These and other objects of the invention may be achieved in whole or in part by a method of regulating the speed of a two-phase switched reluctance machine (TPSRM) rotor. According to this method, a motoring mode or a braking mode of operation is selected for the TPSRM. The rotor speed is regulated, when the motoring mode is selected, using a control signal cooperatively produced by a speed control feedback loop and a current control feedback loop. When the braking mode is selected, the rotor speed is regulated using a control signal produced by the current control feedback loop without the cooperation of the speed control feedback loop. The speed control feedback loop uses an established speed control signal and a signal indicative of the rotor's speed to dynamically adjust a first parameter governing the control signal. The current control feedback loop uses an established current control signal and a signal indicative of the current flowing through a stator winding of the TPSRM to dynamically adjust a second parameter governing the control signal. The braking mode of operation converts the TPSRM's mechanical energy into electrical energy to produce a braking effect on the rotation of the rotor.

The objects of the invention may also be achieved in whole or in part by a drive system for regulating the speed of a two-phase switched reluctance machine (TPSRM) rotor. The system includes a speed control feedback loop component that uses an established speed control signal and a signal indicative of the rotor's speed to dynamically adjust a first parameter, and a current control feedback loop component that uses an established current control signal and a signal indicative of the current flowing through a stator winding of the TPSRM to dynamically adjust a second parameter. A control signal for regulating the speed of the TPSRM rotor is produced in accordance with the first and second parameters when the TPSRM is operated in a motoring mode, and the control signal for regulating the speed of the TPSRM rotor is

5

produced in accordance with the second parameter but not the first parameter when the TPSRM's braking mode is selected. The braking mode of operation converts the TPSRM's mechanical energy into electrical energy to produce a braking effect on the rotation of the rotor.

The objects of the invention may be further achieved in whole or in part by a method of reversing the rotational direction of a two-phase switched reluctance machine (TPSRM) rotor. According to this method, the flow of current through a single controllable current valve is regulated to maintain a forward motoring mode of operation for the TPSRM. Then, the flow of current through the single controllable current valve is regulated to cause the TPSRM's mechanical energy to be converted into electrical energy so as to produce a braking effect on the rotation of the rotor. Thereafter, the flow of current through the single controllable current valve is interrupted for a period of time. After the period of time has expired, the flow of current through the single controllable current valve is regulated to induce the TPSRM's rotor to reverse its direction of rotation.

The objects of the invention may be further achieved in whole or in part by a system for reversing the rotational direction of a two-phase switched reluctance machine (TPSRM) rotor. The system includes a controller and a single controllable current valve that regulates, under the control of the controller, the current flowing through the current valve so as to establish the rotational direction and speed of the rotor. Together, the controller and the current valve cooperate to maintain a forward motoring mode of operation for the TPSRM, when the TPSRM's rotor is to continue rotating in its current direction. Also, the controller and the current valve cooperate to cause the TPSRM's mechanical energy to be converted into electrical energy so as to produce a braking effect on the rotation of the rotor, when a reversal in the rotor's direction of rotation is to be achieved. After the rotor has been braked, the controller and the current valve cooperate to interrupt the flow of current through the single controllable current valve for a period of time. Then the controller and the current valve cooperate to regulate the flow of current through the single controllable current valve to induce the TPSRM's rotor to reverse its direction of rotation.

The objects of the invention may be further achieved in whole or in part by a method of starting the rotation of a rotor of a two-phase switched reluctance machine (TPSRM) whose main and auxiliary phase windings are energized under the control of a single controllable current valve. According to this method, current is conducted through the current valve in a single conduction pulse. Then, a determination is made as to whether the TPSRM's rotor is rotating. If not, current is again conducted through the current valve in a single conduction pulse.

BRIEF DESCRIPTION OF THE DRAWINGS

Preferred embodiments of the present invention will now be further described in the following paragraphs of the specification and may be better understood when read in conjunction with the attached drawings, in which:

FIG. 1 illustrates a related art asymmetric power converter for driving a two-phase SRM;

FIG. 2 illustrates another related art single switch-per-phase power converter for driving a two-phase SRM;

FIG. 3 illustrates still another related art C-Dump power converter for driving a two-phase SRM;

FIG. 4 illustrates still another related art single switch-per-phase power converter for driving a two-phase SRM;

6

FIG. 5 illustrates a single-switch power controller in the form of a converter for driving a two-phase switched reluctance machine (SRM);

FIG. 6 illustrates the four quadrants of torque versus speed operation for a TPSRM;

FIG. 7(a) illustrates a TPSRM and its flux paths during the excitation of its phase A windings;

FIG. 7(b) illustrates the TPSRM of FIG. 7(a) and its flux paths during the excitation of its phase B windings;

FIG. 8 illustrates a rotor and stator of a two-phase SRM motor with main and auxiliary windings wound on respective stator poles;

FIG. 9 illustrates a drive system for a TPSRM;

FIG. 10 illustrates an algorithm for controlling the drive system, illustrated in FIGS. 9 and 13, while motoring or braking the TPSRM illustrated in FIG. 8;

FIG. 11 illustrates a four-quadrant control algorithm for the drive system illustrated by FIG. 9;

FIG. 12 illustrates an algorithm for the operation of the drive system illustrated in FIG. 9;

FIG. 13 illustrates a block diagram of a system for implementing the speed control loop and current control loop within the drive system illustrated in FIG. 9;

FIG. 14 illustrates simulated operational parameters of the drive system illustrated by FIG. 13; and

FIG. 15 illustrates the measured experimental results corresponding to the simulation results illustrated in FIG. 14.

DETAILED DESCRIPTION OF THE INVENTION

FIG. 5 illustrates a single-switch power controller in the form of a power converter 500 for driving a two-phase switched reluctance machine (SRM). One winding of the SRM is alternatively referred to as a main or phase A winding 508, while the other winding is referred to as an auxiliary or phase B winding 505. Although phase windings 505, 508 of the SRM may be spatially separated from power converter 500 and may also be considered to form a part of the machine (also referred to herein as a motor) rather than part of the power converter, these windings 505, 508 are illustrated in the power converter circuit for the purpose of simplifying the description of their cooperative functionality with power converter 500.

When power converter 500 is activated by the application of an alternating current (ac) source voltage 501, a dc source 510 comes into effect through the rectification and filtering provided by a diode 502 and a dc source capacitor 503, respectively. As dc source 510 comes into effect, current begins flowing through electrical paths that are parallel to capacitor 503. These parallel paths are provided by: (1) auxiliary phase B winding 505 and an auxiliary capacitor 506, provided that an optional diode 504 is not included in the circuit, and (2) main phase A winding 508, a diode 507, and auxiliary capacitor 506. The flow of current through these parallel paths charges auxiliary capacitor 506, and the energy stored in auxiliary capacitor 506 generates a current in auxiliary phase B winding 505 and dc source capacitor 503.

Because of the current flow in auxiliary winding 505, there will be a positive or negative torque produced in the SRM, depending on the SRM's rotor position with respect to auxiliary phase B winding 505's stator poles. If the rotor poles are coming toward the stator poles, the inductance slope is positive, and if the rotor poles are moving away from the stator poles, the inductance slope is negative. If there is a negative inductance slope, the torque produced will be negative and the machine will be generating and sending energy to source capacitor 503. If the inductance slope is positive, auxiliary

phase B winding **505** will produce positive or motoring torque, which is torque output by the SEW.

When the current in auxiliary phase B winding **505** is constant and flows continuously, the average torque produced by auxiliary winding **505** is zero. However, current flow through auxiliary winding **505** will not remain constant. After a period of conduction, the current in auxiliary winding **505** discontinues, and this occurs when the voltages across auxiliary capacitor **506** and dc source capacitor **503** equalize. Thereafter, another way must be provided to charge auxiliary capacitor **506**. A transistor switch **509** provides this other way.

Transistor switch **509** is turned on to provide power to main winding **508**. In response to turning on transistor switch **509**, a current path is established through dc source **510**, main winding **508**, and transistor switch **509**. During the period transistor switch **509** is turned on, main winding **508** is operating in its energization mode. Transistor switch **509** is turned off either to regulate the current through main winding **508** or to stop its flow completely.

Due to the inductive nature of main winding **508**, it is important to provide a path for the current to flow away from main winding **508** when transistor switch **509** is turned off. This path is provided by diode **507**, auxiliary capacitor **506**, dc source capacitor **503**, and main winding **508** itself. The current flowing out of main winding **508** charges auxiliary capacitor **506**, and this flow of current is the predominant way in which auxiliary capacitor **506** receives a charge, when operating the SRM.

The energy flow in auxiliary capacitor **506** and, hence, in auxiliary winding **505** is dependent on main winding **508**'s energy flow and, therefore, its duty cycle. As the speed of the SRM increases, the controllable duty cycle of transistor switch **509** increases, thereby increasing the duration of the voltage applied to main winding **508**. Therefore, less charging of auxiliary capacitor **506** occurs, and, hence, less power is provided to auxiliary winding **505**. During times of operating transistor switch **509** with a high duty cycle, the SRM behaves as though it is a single-phase SRM, with auxiliary winding **505** serving as a window to find the rotor position of the machine through its inductance. Auxiliary winding **505**'s inductance can be obtained from its current and voltage waveform or by some other technique known to those skilled in the art.

Auxiliary winding **505** returns to dc source capacitor **503** the energy it receives from main winding **508**, when transistor switch **509** is turned off. During low speed operation, transistor **509**'s duty cycle is low and both auxiliary winding **505** and main winding **508** are active and produce motive power. Therefore, the SRM serves as a two-phase SRM. This resembles a capacitor-start and capacitor-run single-phase induction motor. It should be noted that such a single-phase induction motor has two phase windings.

FIG. 6 illustrates the four quadrants of torque versus speed operation for a TPSRM. Quadrants I, II, III, and IV correspond respectively to the operational modes of forward motoring (FM), reverse regeneration (RR), reverse motoring (RM), and forward regeneration (FR).

Speed control is achieved in the clockwise (CW) direction of rotation by forward motoring and in the counter-clockwise (CCW) direction of rotation by reverse motoring. During forward and reverse motoring operation, the TPSRM produces mechanical power from the input of electrical power.

Also, speed control may be achieved when operating the TPSRM as a generator, during the transition from CW rotation to CCW rotation direction or vice versa. This operational mode provides the effect of an electric brake in that mechani-

cal energy is recovered from the stored energy in the machine's inertia and its load inertia for conversion to electrical energy. By recovering the mechanical energy, the machine may be quickly slowed down without the use of a mechanical brake (use of a mechanical brake dissipates the energy resulting in low efficiency). When the mechanical energy is not recovered for conversion to electrical energy, the machine rotation will slow down by its inertia alone, but this may take longer since the mechanical energy is not harvested.

The transition from forward to reverse motoring is known as forward regeneration, and the reverse transition is known as reverse regeneration. A more complete description of an SRM's operational modes may be found in each of "Switched Reluctance Motor Drives", R. Krishnan, CRC Press, June 2001, and "A Sensorless Switched Reluctance Drive," Electric Machines and Drives, C E B Green and J M Stephenson, 1997, pp. 64-68.

FIG. 8 illustrates a rotor and stator of a two-phase SRM motor with main and auxiliary windings wound on respective stator poles. Referring to FIG. 8, a two-phase SRM motor **800** is shown having a rotor **801** and a stator **803**. Rotor **801** has two salient poles **802**, and stator **803** has four salient poles **804**, **805**. Stator poles **805** have auxiliary winding **505** wound around them, and stator poles **804** have main winding **508** wound around them.

Power converter **500** provides a single-controllable-switch converter to control the speed of TPSRM **800** in all four quadrants of torque versus speed operation. Two issues related to controlling the four-quadrant operation of TPSRM **800** with power converter **500** are discussed below.

A first issue concerns starting the rotation of the TPSRM's rotor both for instances where the main stator poles are in alignment with the rotor poles and not. Though the invention is not limited to an embodiment in which the main and auxiliary windings are equal in number or size, assume for the purpose of explaining this operational issue that TPSRM **800** is used. Main winding **508** primarily produces the motive power and auxiliary winding **505** is used for start-up and for reversing the rotational direction of the motor.

When rotor poles **802** are aligned with stator poles **804** and main phase winding **508** is excited, the machine will not produce any torque since the rate of change of inductance is zero in this position. An SRM produces torque only when there is a change of inductance with respect to rotor position. But it is not possible to excite auxiliary phase winding **505** independently when TPSRM **800** is operated with a single-controllable-switch converter. Therefore, the rotor and stator poles must be moved away from an aligned position at the time of starting.

Power converter **500** may be used to move the rotor and stator poles away from an aligned position in the following way. Transistor switch **509** is pulsed on for a considerable period of time, and if the machine does not start, then a second pulse is applied after about one second to make the rotor move. No further pulses are needed to start the movement of TPSRM **800**'s rotor.

The second issue concerns, assuming that the machine is reliably started, keeping the machine running in quadrants I, II, III and IV in light of the fact that there is no independent way to energize the main **508** and auxiliary **505** phases of TPSRM **800** with power converter **500**, since it has only one controllable switch **509**. This issue is discussed more fully below.

A large amount of literature exists concerning the four-quadrant control of SRM drives, such as described by R. Krishnan, "Switched reluctance motor drives", CRC Press, June 2001; Syed Hossain, Iqbal Husain, Harald Klode, Bruno

Lequesne, and Avoki Omekanda, "Four-Quadrant Control of a Switched Reluctance Motor for a Highly Dynamic Actuator Load", APEC, 2002, pp. 41-47, C E B Green and J M Stephenson, "A Sensorless Switched Reluctance Drive", Electric Machines and Drives, 1997, pp. 64-68; B. Fahimi and Raymond. B Sepe Jr., "Development of 4-Quadrant Sensorless Control of SRM Drives Over the Entire Speed Range", IEEE-IAS, 2002, pp. 1625-1632; and G. Suresh, B. Fahimi, K. M. Rahman, M. Ehsani, and I. Panahi, "Four-quadrant Sensorless SRM Drive with High Accuracy at All Speeds", APEC, 1999, pp. 1226-1231. However, no literature is known to exist for SRM drives having a single-controllable-switch power converter, excluding applicant's patent applications. This is due to the absence of such a power converter in the related art. Significant features peculiar to this converter are its limited degree of direct-current control of a TPSRM's main phase and its heavy dependence on the auxiliary phase winding and auxiliary capacitor state. Additionally, the degree of control that may be exerted over the current flowing through the auxiliary winding is dependent on the duty cycle of the controllable switch, motor speed and load, and state of the auxiliary capacitor. These constraints on the current control through the auxiliary winding have to be managed very tightly to implement four-quadrant variable-speed operation of a TPSRM, as described below.

Once TPSRM **800** is started up, the normal running control involves turning on transistor switch **509** when rotor poles **802** are unaligned with respect to the main stator poles **804** (i.e., the rotor poles are more nearly aligned with the auxiliary stator poles) and turning off transistor switch **509** just before or at the complete alignment of the main stator and rotor poles **804** and **802**, respectively. The running control is described more fully below with respect to the four speed-versus-torque operational modes.

Assume the intended direction of rotation for rotor **801** is clockwise (CW). Main winding **508** on main stator poles **804** is energized with a current, and this current is commutated when the rotor and main stator poles **802**, **804** align or are close to alignment. During this energization period, the inductance slope of main winding **508** is positive. Hence, the torque produced is positive and in the direction of rotor **801**'s movement. Assuming that a CW rotation is positive, motor **800** is delivering positive output power (i.e., motoring torque). In other words, when the torque and speed are positive, so too is the power output of motor **800**. This condition indicates quadrant one operation.

For quadrant four operation, the torque has to be negative when the speed is positive. As a result, motor **800** delivers negative power in quadrant four operation. That is, the power is taken from SRM **800** and fed to dc source capacitor **503**. This is called regeneration in the CW direction of rotation. In order to produce negative torque, the current in main winding **508** is injected when rotor poles **802** move away from alignment with respect to main stator poles **804**.

For quadrant three operation, rotor **801** rotates in the counter-clockwise (CCW) direction and torque is applied in this direction, resulting in negative speed and negative torque and contributing to positive power. Therefore, this is motoring in the reverse direction. Reverse direction motoring is achieved by energizing main winding **508** when rotor poles **802** start to move CCW from a completely unaligned position with respect to main stator poles **804**. The current is commutated in main winding **508** when the rotor and main stator poles **802**, **804** align or are near alignment.

Quadrant two operation is very similar to that of quadrant four, but the torque is positive (CW) and the speed is negative (CCW). Quadrant two operation, therefore, provides negative

output power. This is regeneration in the CCW direction of rotation and is realized by energizing main winding **508** with a current when rotor poles **802** start moving CCW away from alignment with main stator poles **804**.

FIG. **9** illustrates a drive system **900** for a TPSRM. Drive system **900** includes power converter **500**, SRM **800**, a signal interface module **910**, and a digital signal processor (DSP) controller **950**. Signal interface module **910** has a current sensor **912** for sensing the current flowing through main phase winding **508** (or some signal indicative of this current) and Hall-effect sensors **914** for detecting two discrete positions, spaced 90° apart, of SRM **800**'s rotor. A voltage converter **916** of signal interface module **910** converts the output signals of Hall-effect sensors **914** before providing the converted signals to a general and an interrupt component **954** of DSP controller **950**. A signal indicative of the current sensed by current sensor **912** is filtered and amplified by a low-pass filter/amplifier **918** and provided to DSP controller **950** through its analog-to-digital converter (ADC) **956**. DSP controller **950** estimates the rotational speed of SRM **800**'s rotor from successively sensed rotor position signals provided by interrupt component **954**.

A self-starting component **958** outputs a start-up signal to a speed command component **960** so as to activate a speed command, which consists of the intended magnitude and direction for SRM **800**'s rotor. The operational mode, corresponding to motoring or braking, of SRM **800** is determined by an operational mode component **962** based on the speed command. If the mode is determined to be the motoring mode, a summer **964** calculates a speed error from the difference between the speed estimated by DSP controller **950**, in speed estimator component **966**, and the speed command provided by operational mode component **962** via a motoring mode component **968**. The speed error is provided to a speed control loop component **970**, which may be a proportional plus integral (PI) controller. Speed control loop component **970** produces a current command that is regulated by a current feedback control component, which may also be a proportional plus integral type controller.

The current feedback control component comprises a summer **972**, a summer **974**, and a current control loop component **976**. Summer **972** determines the difference between the current command and a digital representation of the current signal provided to ADC **956**. The difference value output by summer **972** is provided to current control loop component **976** to produce a control signal that is proportional to the duty cycle of transistor switch **509** in power converter **500**. This control signal is provided to a pulse width modulator (PWM) **982** and updated for every carrier period of pulse width modulation control exerted on SRM **800**. PWM **982** generates a pulse width modulation signal, from the control signal, that is provided to a gate control signal component **920** of signal interface module **910**. Gate control signal component **920** produces a gate control signal that turns transistor switch **509** of power converter **500** on and off.

If the speed command produced by speed command component **960** indicates that regenerative braking is to be performed, then DSP controller **950** produces the control signal in a different way. Operation mode component **962** indicates to a braking mode component **978** that the regenerative braking mode is in effect. Braking mode component **978** provides an indication of SRM **800**'s rotor speed to a low speed component **980**. If SRM **800**'s rotor speed is above a threshold low speed, summer **974** determines a difference between a current command that is output by low speed component **980** and the digital representation of the sensed current signal output by ADC **956**. The difference signal determined by

summer 974 is provided to current control loop 976 to generate the control signal for the braking mode of operation, which controls pulse width modulator 982 so as to regulate transistor switch 509. If SRM 800's rotor speed is lower than the threshold low speed, then low speed component 980 provides a reversal pulse to PWM 982 that overrides the control signal output by current control loop 976 so that this reversal pulse regulates the pulse width modulated signal produced by PWM 982.

Once SRM 800's rotor speed is reversed, the controller automatically goes into motoring mode in the opposite direction and current control loop 976, again, dynamically determines and controls the pulse width modulation signal that serves as the gate control signal for transistor switch 509.

FIG. 10 illustrates an algorithm for controlling the drive system, illustrated in FIGS. 9 and 13, while motoring or braking the TPSRM illustrated in FIG. 8. Operational control of SRM 800 begins with the execution by self-starting component 958 of a self-starting operation 1002 that sets SRM 800's rotor in rotational motion. After self-starting operation 1002 is complete, operation mode component 962 determines 1004 whether the motoring mode is in effect. If so, then monitoring mode component 968 regulates 1006 the generation of the current command by speed control loop component 970. Otherwise, braking mode component 978 regulates 1008 the generation of the current command. In either case, current control loop component 976 regulates 1010 the pulse width modulation signal generated by PWM 982 based on the current command and the control signal generated therefrom.

FIG. 11 illustrates a four-quadrant control algorithm for the drive system illustrated by FIG. 9. According to this control implementation, drive system 900 continuously monitors the operation of SRM 800 to determine 1102 whether SRM 800's rotor should change its direction of rotation. When a change of direction is indicated, a braking sequence is executed 1104 to slow the rotational speed of SRM 800's rotor. If the turning speed of SRM 800's rotor is below a threshold speed 1106, then a determination 1108 of the alignment between SRM 800's rotor and stator poles is made. Otherwise, the braking sequence 1104 is continued. If SRM 800's rotor and stator poles are unaligned, then the pulse width modulation signal applied to transistor switch 509 is discontinued 1110. Otherwise, drive system 900 waits until SRM 800's rotor and stator poles have rotated to an unaligned position. After the pulse width modulation signal is discontinued 1110, drive system 900 executes a delay operation 1112, for a particular period of time, before generating a reversal start pulse 1114. Thereafter, the pulse width modulation signal is reactivated 1116 so that a motoring sequence 1118 may be executed for controlling SRM 800's rotor.

Accordingly, a purpose of the four-quadrant control algorithm is to set up a PWM sequence with respect to a quadrant command and to generate a start pulse for reversal. After the rotor speed reaches the desired speed, the starting signal for reversal will be applied to the power converter.

DSP controller 950 checks 1108 for an unaligned position of SRM 800's rotor and stator poles, in the four-quadrant control algorithm illustrated in FIG. 11, so as to obtain a huge negative torque with short delay. The maximum negative torque can be produced after the rotor passes the unaligned position (90°) (i.e., preferably more than half way between adjacent stator poles in its rotation). PWM off 1110 indicates the deactivation of the PWM function, so as to slow and decrease the current flow in main winding 508. Delay 1112 is the time duration needed to move rotor 801 to the maximum negative torque position.

FIG. 12 illustrates an algorithm for the operation of drive system 900. According to this algorithm, DSP controller 950 initializes 1202 its mode of operation by examining SRM 700's rotor position and the sensed current provided by Hall-effect sensors 914. Additionally, DSP controller 950 determines its operational command parameters and initializes a timer, ADC 956, general input port 952, interrupt component 954, its external interrupt functions, and its operating variables. After initialization, DSP controller 950 applies 1204 a single pulse to transistor switch 509 via signal interface module 910. If this pulse does not cause SRM 800's rotor to begin turning, as determined in step 1206, another pulse is applied 1204. If rotor 901 is determined 1206 to be turning, DSP controller 950 determines 1208 the rotor's direction of rotation, sets 1208 a speed command, such as 5000 revolutions per minute (rpm), and sets 1208 SRM 800's operational mode to the motoring mode. Thereafter, DSP controller 950 drives 1210 the single switch SRM (SSSRM) 800's motoring operation in accordance with a proportional integrator (PI) speed control loop and a PI current control loop, until the speed command is determined 1212 to have changed. When the speed command is changed to indicate a reversal of rotational direction for SSSRM 800's rotor, DSP controller 950 drives 1214 a braking operation for SSSRM 800 using a PI current control loop, until the rotational speed of SSSRM 800's rotor is determined 1216 to be rotating at less than a threshold speed, such as 250 rpm. When the rotor's speed falls below this threshold, DSP controller 950 deactivates 1218 the PWM control of transistor switch 509 and waits 1218 an established delay time before applying 1218 a reversal pulse to SSSRM 800's rotor. Then, DSP controller 950 establishes 1220 this reverse direction of rotation as the desired direction and re-establishes the motoring operation drive 1210 for the new direction of the rotor's rotation.

FIG. 13 illustrates a block diagram of a system for implementing the speed control loop and current control loop within the drive system illustrated in FIG. 9. A summer 1302 determines a speed error signal by subtracting a filtered speed indication signal from a speed command. This speed error signal is provided to a speed controller and limiter 1306, which generally is a proportional plus integral type controller. Speed controller and limiter 1306 performs a predetermined operation on the speed error signal and outputs the result to a current command controller 1308. Current command controller 1308 performs a predetermined operation on the signal provided by speed controller and limiter 1306 to generate a current command.

The current command can be determined in many ways. The standard method is to set the current command proportional to the square root of a torque command, which is the output of the speed controller and limiter 1306. The present invention is not restricted by the algorithm that may be used in the current command generator.

A summer 1310 determines a current error signal by subtracting a filtered indicator of the current flowing through transistor switch 509 from the current command. Current controller 1314 performs a predetermined operation on the current error signal and outputs the result to a PWM controller 1316. PWM controller 1316 generates a pulse width modulation signal from the signal received from current controller 1316. The pulse width modulation signal is provided to power converter 500 for turning on and off transistor switch 509 and thereby controlling the energization of SRM 800's phase windings. A current filter 1312 filters, using a low pass filter, the sensed indicator of the current flowing between power converter 500 and SRM 800, and a filter 1304 filters the rotor

13

speed obtained from processing the rotor position signals, sensed from SRM 800, in a DSP or from a hardware circuit.

FIG. 14 illustrates simulated operational parameters of the drive system illustrated by FIG. 13. Torque and current parameters are graphed as a function of an applied speed command for the four-quadrant operational modes of forward motoring, forward regeneration, reverse motoring, and reverse regeneration. The units of measure for the parameters illustrated in FIG. 14 are presented in normalized units (e.g., 1 p.u. means 100% times the base value of the variable).

As may be seen in FIG. 14, when the rotor speed and its command are positive, then SRM 800 is in its quadrant I mode of operation of forward motoring. Note that during this time, the power is positive as the machine is being powered by the positive torque to keep it running in the CW direction (by the convention used herein, CW speed is positive speed).

When the command speed is made negative so as to make SRM 800 run in the negative direction (CCW), the torque of the machine is made negative. Hence, the power output is negative, indicating that the machine is operating as a generator by transferring mechanical energy from the machine to the power supply as electrical energy. This brakes the machine rotor resulting in a faster decrease in speed. The speed is positive (CW) but torque is negative. Therefore, SRM 800 is in its quadrant IV mode of operation of forward regeneration.

When the machine rotor reaches zero speed, the machine continues to produce negative torque, thus causing the motor rotor to rotate in the CCW direction (because positive torque runs the rotor in the CW direction), which is negative speed (as CW speed is positive). This corresponds to the quadrant III mode of operation, as the speed and torque are both negative and the resulting power is positive. That is, the machine produces mechanical power while taking in electrical power (same as in quadrant I). Therefore, this operational mode is reverse motoring.

When the speed command is made to go from negative speed to say zero speed, while SRM 800 is operating in the quadrant III mode of operation, the machine is slowed down by applying a torque that is opposite to what was previously being applied (that is negative). Therefore, a positive torque has to be generated and applied. The torque command goes from negative to positive and the torque becomes positive as soon as the speed is commanded. The torque is positive and the speed is negative at this time, thus producing negative power. That is, the output power is electrical and the input power is mechanical power resulting in the slowing down of the machine. This is the quadrant II operational mode of reverse regeneration.

FIG. 15 illustrates the measured experimental results corresponding to the simulation results illustrated in FIG. 14. The units of measure for the graphed rotor speed and its command are 5,000 rpm/division, the unit of measure for the current is 10 A/division, and the unit of measure for the time is 5 s/division. As may be determined by comparison of FIGS. 14 and 15, the simulation results correspond closely to the experimental results.

The foregoing description illustrates and describes the present invention. However, the disclosure shows and describes only the preferred embodiments of the invention, but it is to be understood that the invention is capable of use in various other combinations, modifications, and environments. Also, the invention is capable of change or modification, within the scope of the inventive concept, as expressed herein, that is commensurate with the above teachings and the skill or knowledge of one skilled in the relevant art.

14

The embodiments described herein are further intended to explain best modes known of practicing the invention and to enable others skilled in the art to utilize the invention in these and other embodiments, with the various modifications that may be required by the particular applications or uses of the invention. Accordingly, the description is not intended to limit the invention to the form disclosed herein.

What is claimed is:

1. A method of reversing the rotational direction of a two-phase switched reluctance machine (TPSRM) rotor, the method comprising:

regulating the flow of current through a single controllable current valve to maintain a forward motoring mode of operation for the TPSRM;

regulating the flow of current through the single controllable current valve to cause the TPSRM's mechanical energy to be converted into electrical energy so as to produce a braking effect on the rotation of the rotor; interrupting the flow of current through the single controllable current valve for a period of time; and regulating the flow of current through the single controllable current valve, after the period of time has expired, to induce the TPSRM's rotor to reverse its direction of rotation.

2. The method of claim 1 further comprising:

determining the position of the TPSRM's rotor poles with respect to the TPSRM's stator poles; and determining the period of time for interrupting the flow of current through the single controllable current valve in accordance with the determined position of the rotor poles.

3. The method of claim 2, wherein the flow of current through the single controllable current valve remains interrupted until the rotor poles are expected to have rotated more than half way between adjacent stator poles.

4. The method of claim 2, wherein the period of time during which the flow of current through the single controllable current valve is interrupted is no less than the period of time expected for the rotor poles to have rotated more than half way between adjacent stator poles.

5. A system for reversing the rotational direction of a two-phase switched reluctance machine (TPSRM) rotor, the system comprising:

a controller; and a single controllable current valve that regulates, under the control of the controller, the current flowing through the current valve so as to establish the rotational direction and speed of the rotor, wherein:

the controller and the current valve cooperate to maintain a forward motoring mode of operation for the TPSRM, when the TPSRM's rotor is to continue rotating in its current direction,

the controller and the current valve cooperate to cause the TPSRM's mechanical energy to be converted into electrical energy so as to produce a braking effect on the rotation of the rotor, when a reversal in the rotor's direction of rotation is to be achieved,

the controller and the current valve cooperate to interrupt the flow of current through the single controllable current valve for a period of time, after the rotor speed has been reduced by the braking effect, and

the controller and the current valve cooperate to regulate the flow of current through the single controllable current valve, after the period of time has expired, to induce the TPSRM's rotor to reverse its direction of rotation.

6. The system of claim 5, wherein:
the controller determines the position of the TPSRM's
rotor poles with respect to the TPSRM's stator poles;
and
the controller determines the period of time for interrupting 5
the flow of current through the single controllable cur-
rent valve in accordance with the determined position of
the rotor poles.

7. The system of claim 6, wherein the flow of current
through the single controllable current valve remains inter- 10
rupted until the rotor poles are expected to have rotated more
than half way between adjacent stator poles.

8. The system of claim 6, wherein the period of time during
which the flow of current through the single controllable
current valve is interrupted is no less than the period of time 15
expected for the rotor poles to have rotated more than half
way between adjacent stator poles.

* * * * *