



US00D435375S

United States Patent [19] Cromer, III et al.

[11] Patent Number: Des. 435,375
[45] Date of Patent: ** Dec. 26, 2000

[54] **PORTION OF A CRIB**
[75] Inventors: **Archie E. Cromer, III; Bonnie K. Johnson**, both of Blacksburg, Va.
[73] Assignee: **Virginia Tech Intellectual Properties, Inc.**, Blacksburg, Va.
[**] Term: **14 Years**

D. 395,559 6/1998 Almborg et al. .
D. 403,174 12/1998 Beaumont D6/390
D. 403,542 1/1999 Feldstein D6/503
2,471,762 5/1949 Merrett .
2,524,483 10/1950 Shealey .
2,679,055 5/1954 Ball et al. .
3,135,973 6/1964 Spencer .
5,410,765 5/1995 Dicken .

[21] Appl. No.: **29/113,719**
[22] Filed: **Nov. 12, 1999**
[51] **LOC (7) Cl.** **06-06**
[52] **U.S. Cl.** **D6/505; D6/390**
[58] **Field of Search** D6/382, 385, 388-395,
D6/505-508; 5/53.1, 93.1, 93.2, 98.1, 101,
907

OTHER PUBLICATIONS

Lullabye, c1936, p. 32, #6117 crib at top.
Lullabye, c1936, p. 30, #5718 crib at top.
Primary Examiner—Janice E. Seeger
Attorney, Agent, or Firm—Banner & Witcoff, Ltd.

[57] CLAIM

The ornamental design for a portion of a crib, as shown and described.

[56] References Cited

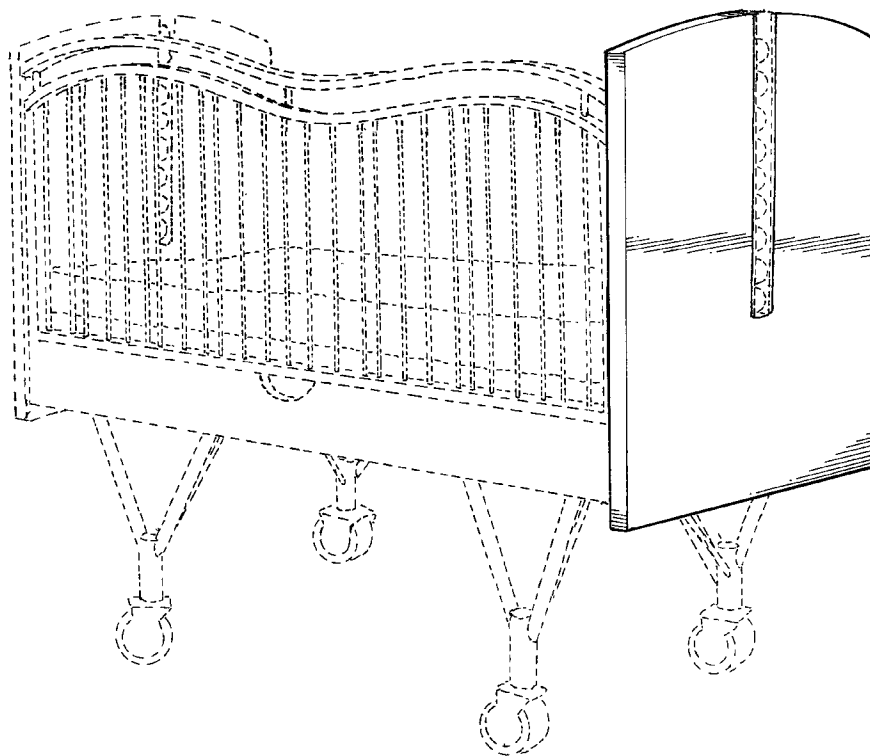
U.S. PATENT DOCUMENTS

D. 21,530 5/1892 Hannahs .
D. 88,521 12/1932 Fuller et al. .
D. 88,523 12/1932 Fuller et al. .
D. 105,934 9/1937 Bukolt .
D. 124,427 12/1940 Feldman .
D. 153,335 4/1949 Brand .
D. 227,426 6/1973 Jacobs .
D. 292,952 12/1987 Mercurio .
D. 323,589 2/1992 Mariol .
D. 328,207 7/1992 White .
D. 377,871 2/1997 Pollard .
D. 378,640 4/1997 Yeh .

DESCRIPTION

FIG. 1 is a front perspective view of a portion of a crib showing our new design;
FIG. 2 is an elevational view of a first side of the portion of a crib;
FIG. 3 is an elevational view of a second side of the portion of a crib opposite that shown in FIG. 2; and,
FIG. 4 is a bottom plan view of the portion of a crib.
The broken line showing of the remainder of the crib is for illustrative purposes only and forms no part of the claimed design.

1 Claim, 2 Drawing Sheets



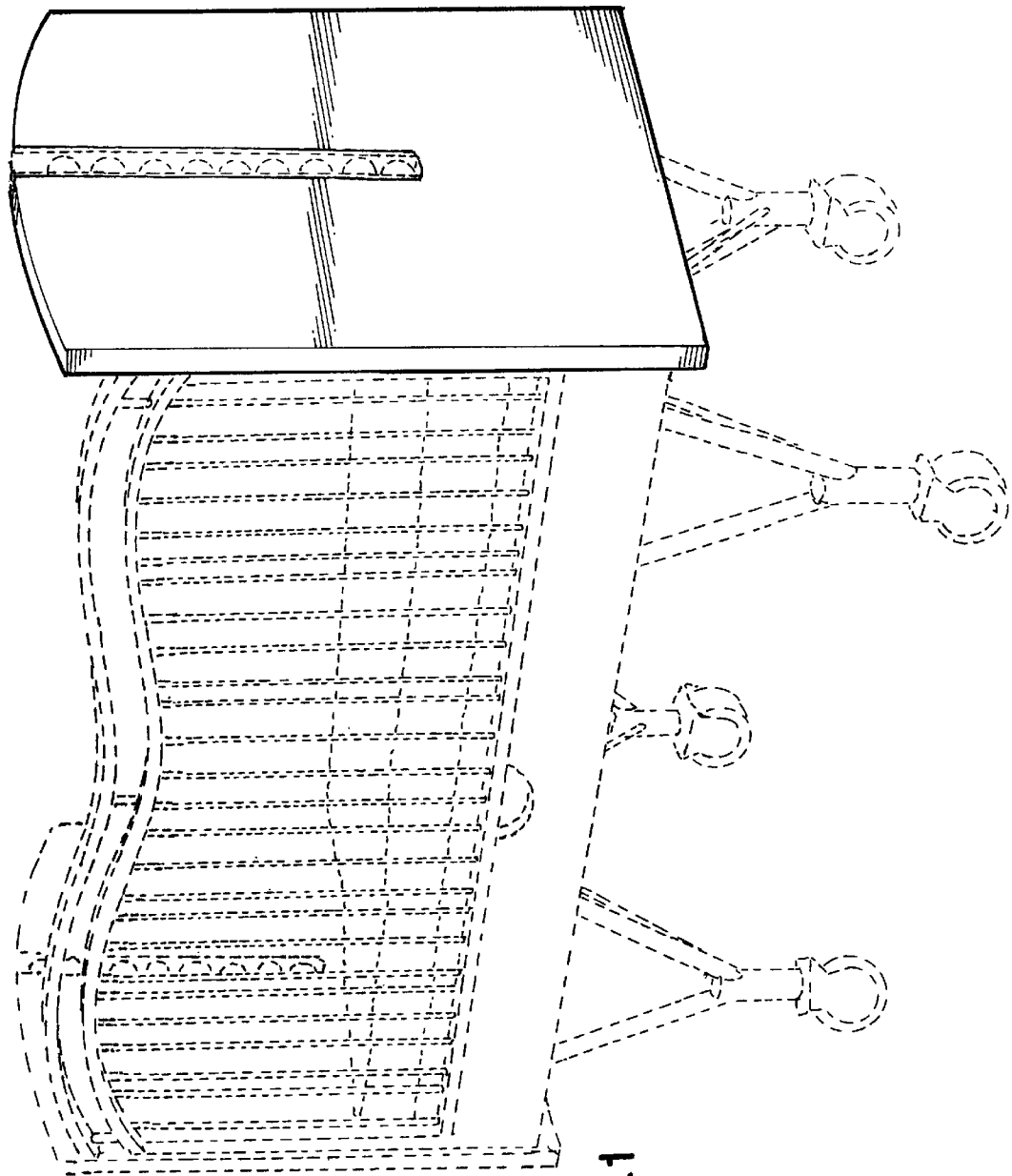


FIG.1

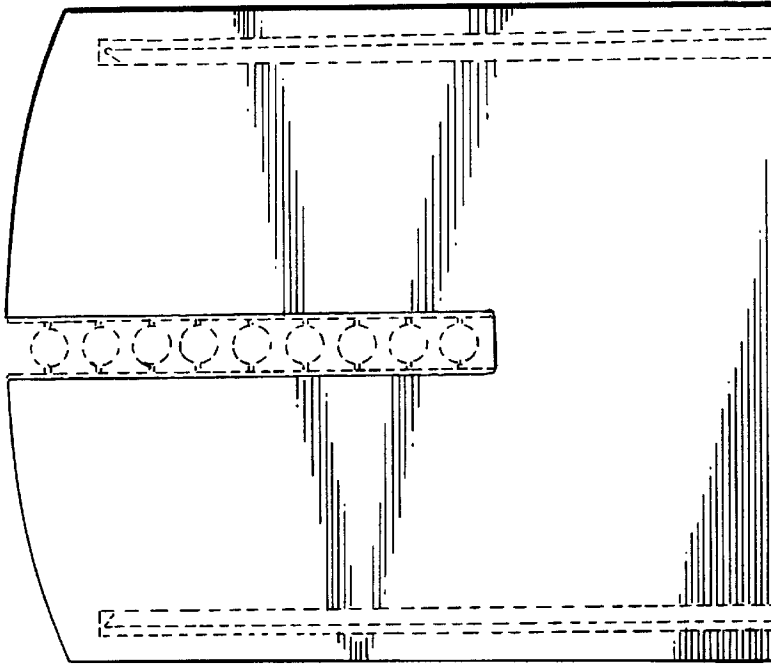


FIG. 2

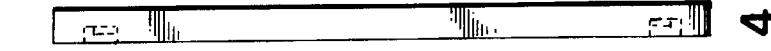


FIG. 3



FIG. 4