

*CHUARIA, VENDOTAENIA, AND THE TAPHONOMY OF THE CARBONACEOUS
COMPRESSION*

Evan Pelzner Anderson

Thesis submitted to the faculty of the Virginia Polytechnic Institute and State University in
partial fulfillment of the requirements for the degree of

Master of Science
In
Geosciences

Shuhai Xiao, Chair
Michal J. Kowalewski
J. Fred Read

May 3, 2010
Blacksburg, VA

Keywords: *Vendotaenia*, *Chuarina*, Carbonaceous Compression, Taphonomy, Elemental Mapping

Figure Repository A2. ESEM images taken in BSE and SE modes of samples and specimens used in this study.

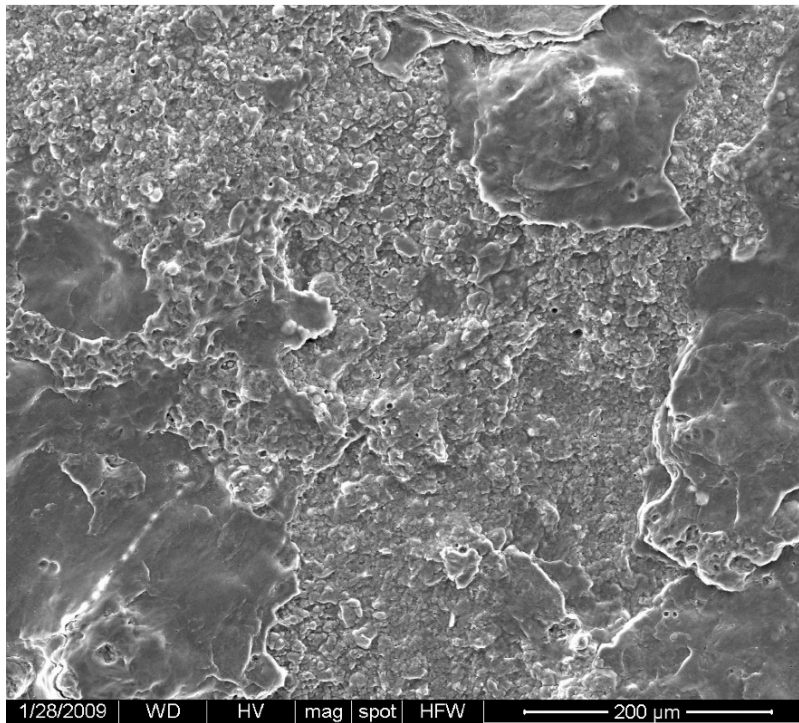


Figure A2.1- Zoom-in BSE image of specimen 08-SX-DST3-3B3-#5

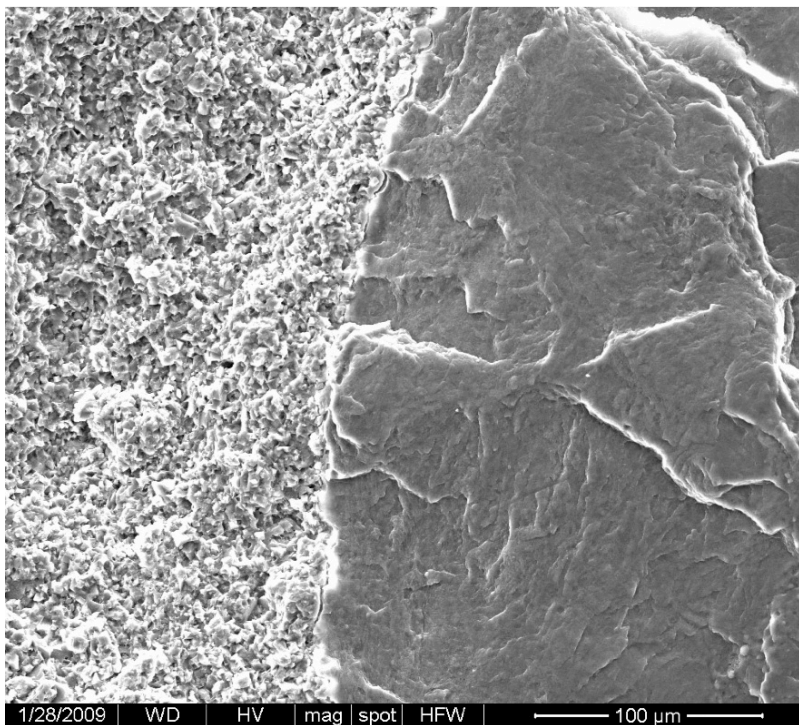


Figure A2.2- Zoom-in BSE image of edge of specimen 08-SX-DST3-3B3-#5

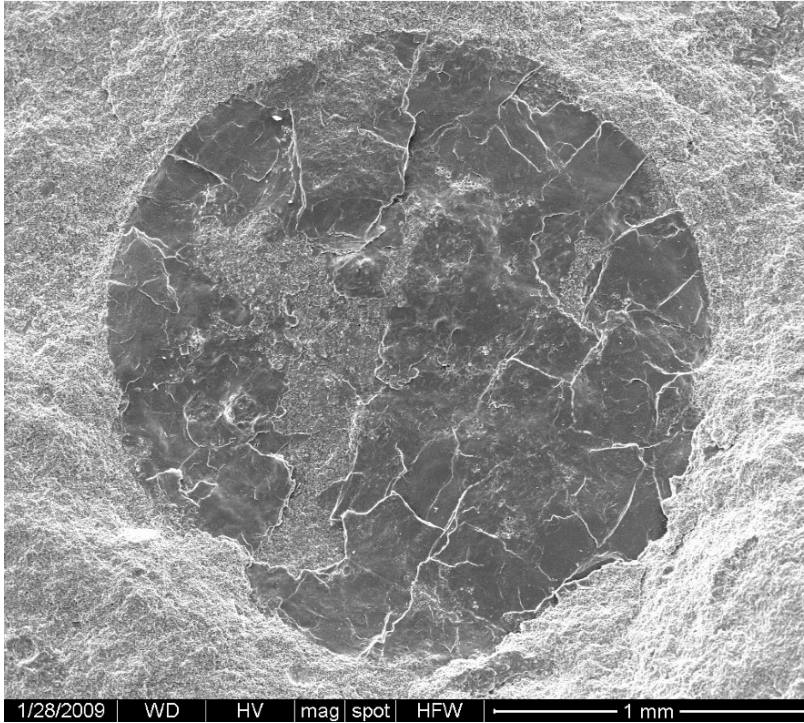


Figure A2.3- BSE image of specimen 08-SX-DST3-3B3-#5

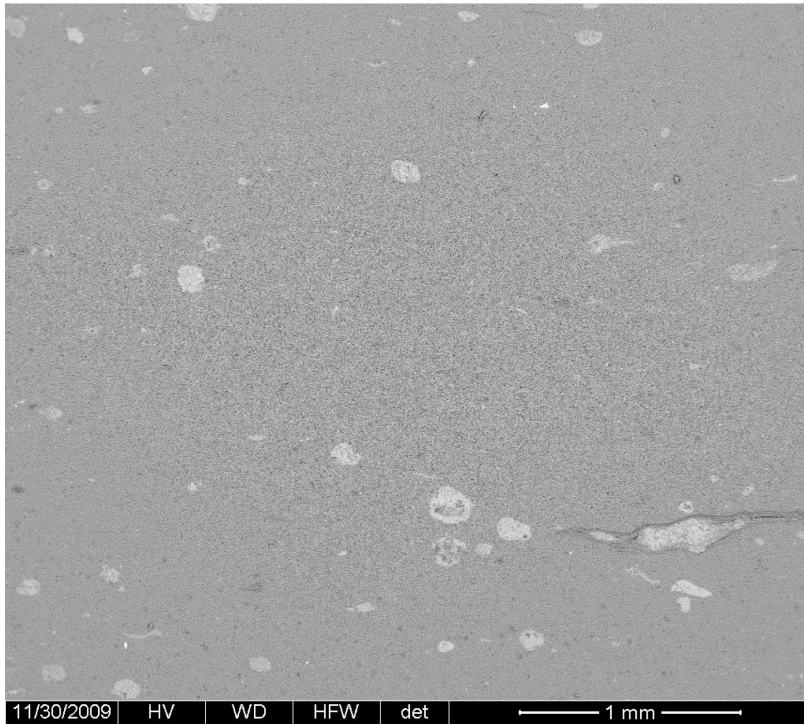


Figure A2.4- BSE image of left half of specimen 08-SX-DST3-3D1e-#1

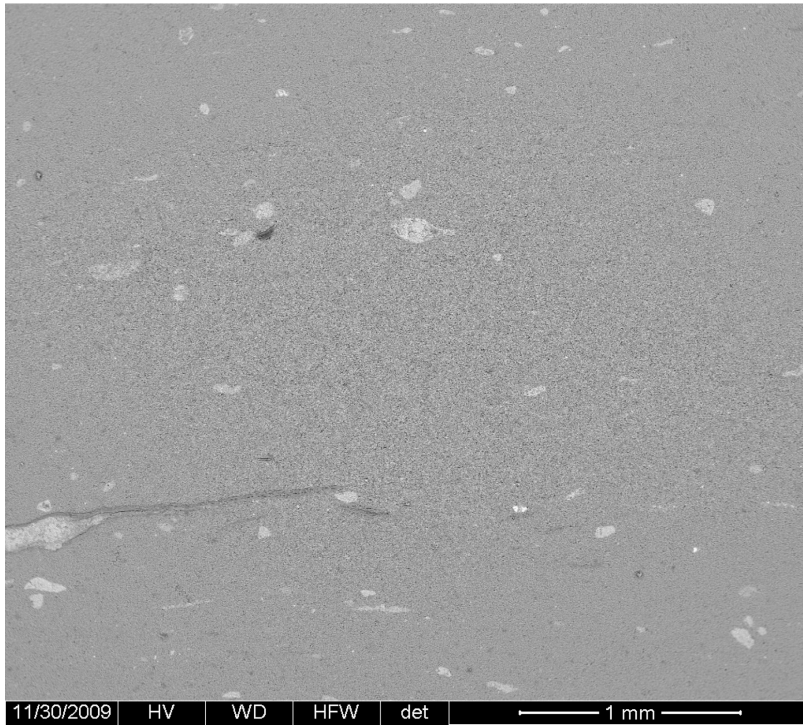


Figure A2.5- BSE image of right half of specimen 08-SX-DST3-3D1e-#1

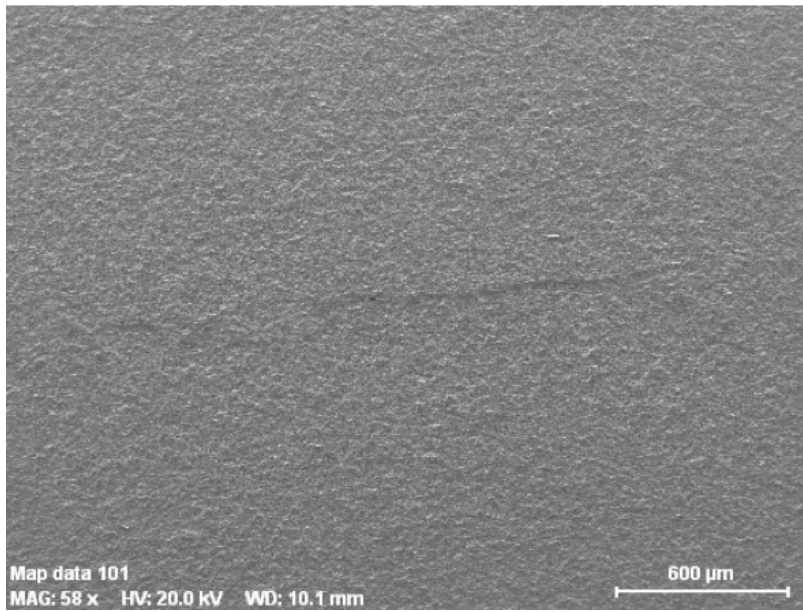


Figure A2.6- SE image of specimen 08-SX-DST3-3D1e-#1

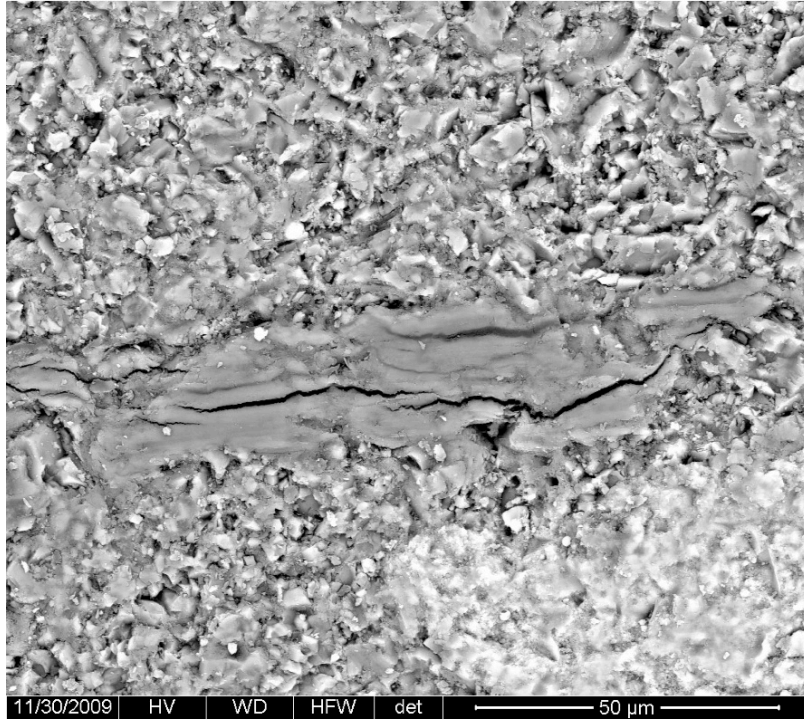


Figure A2.7- Zoom-in BSE image of specimen 08-SX-DST3-3D1e-#1

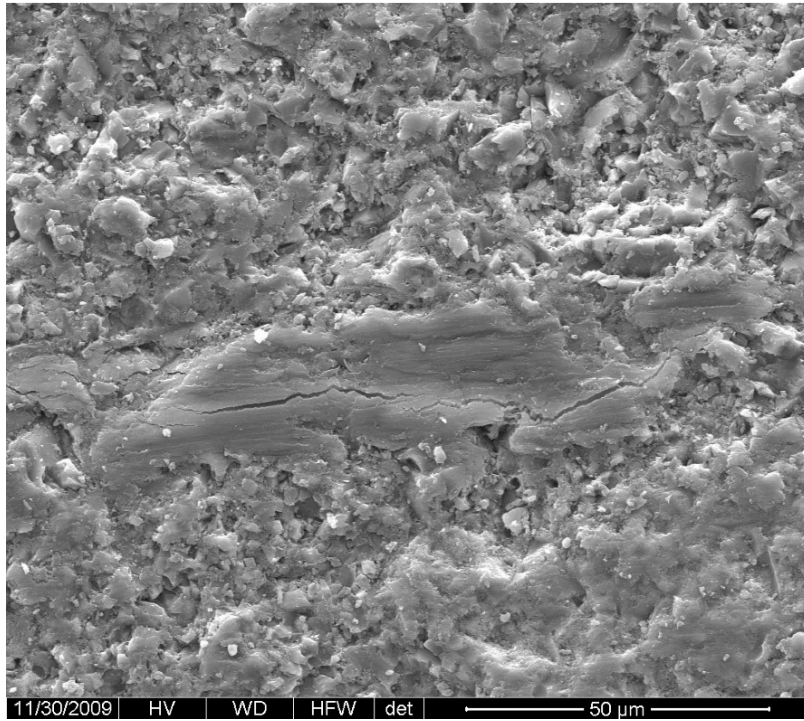


Figure A2.8- Zoom-in SE image of specimen 08-SX-DST3-3D1e-#1

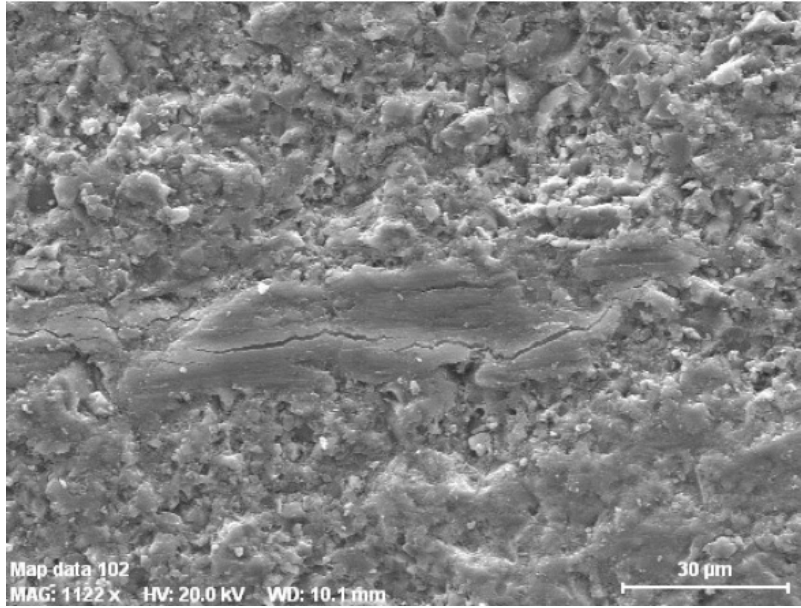


Figure A2.9- Additional zoom-in SE image of specimen 08-SX-DST3-3D1e-#1

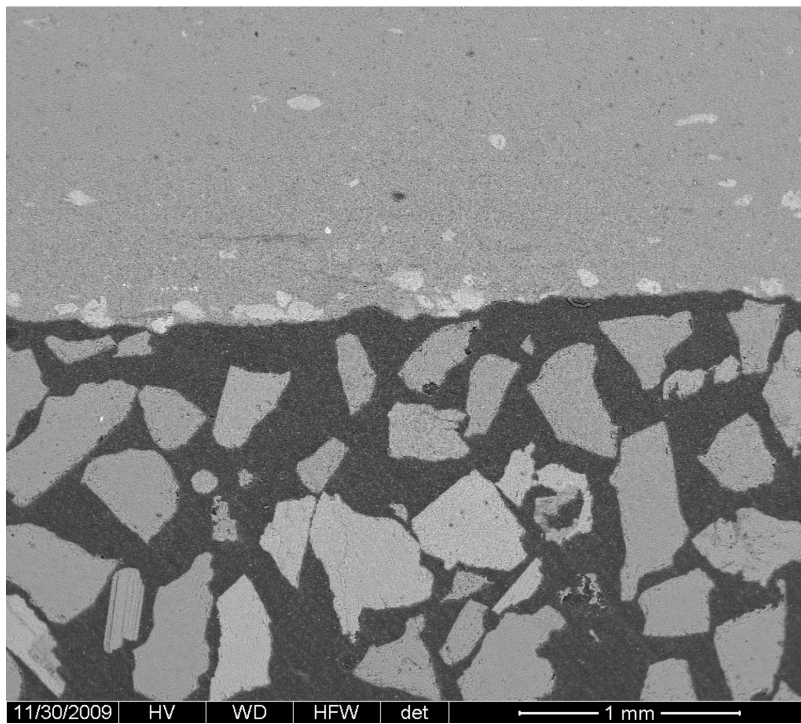


Figure A2.10- BSE image of specimen 08-SX-DST3-3D1e-#2

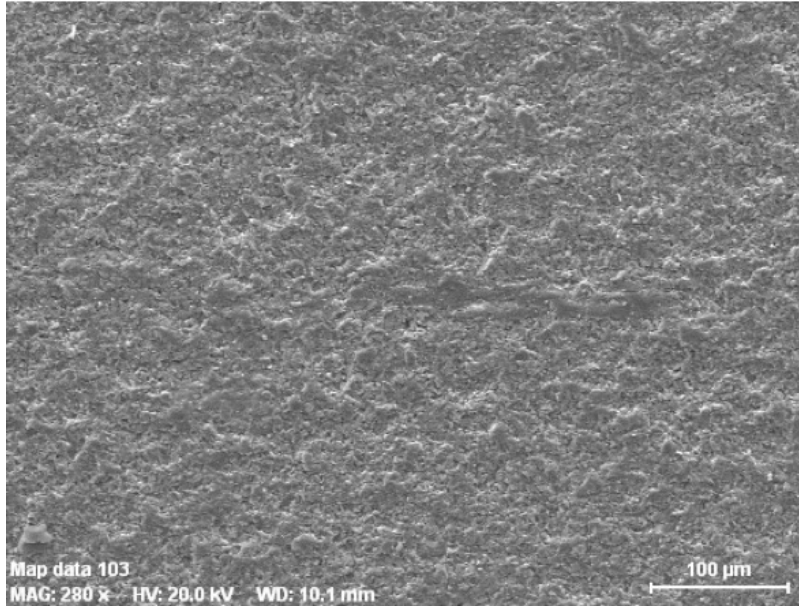


Figure A2.11- SE image of specimen 08-SX-DST3-3D1e-#2

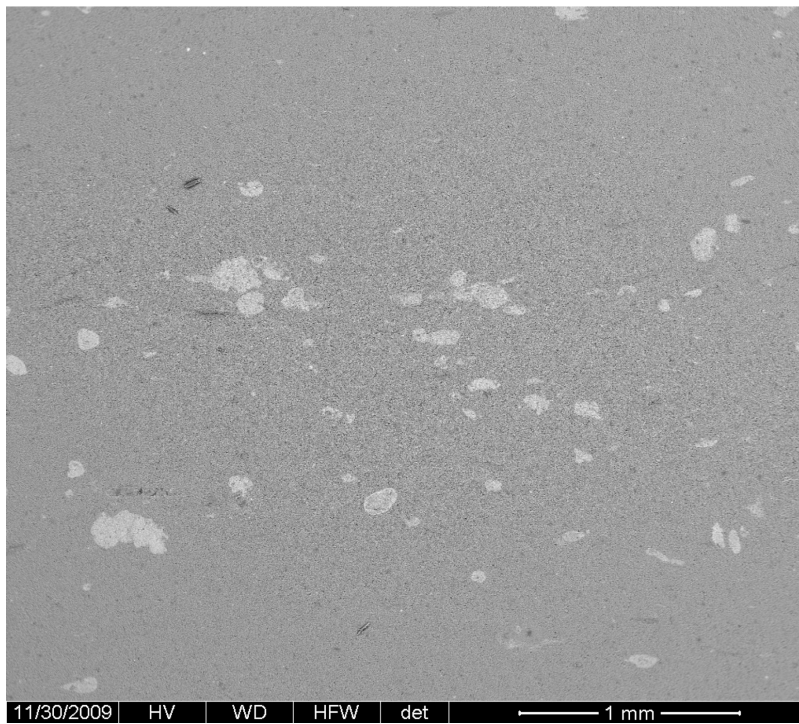


Figure A2.12- BSE image of specimen 08-SX-DST3-3D1e-#3 and phosphatic grains

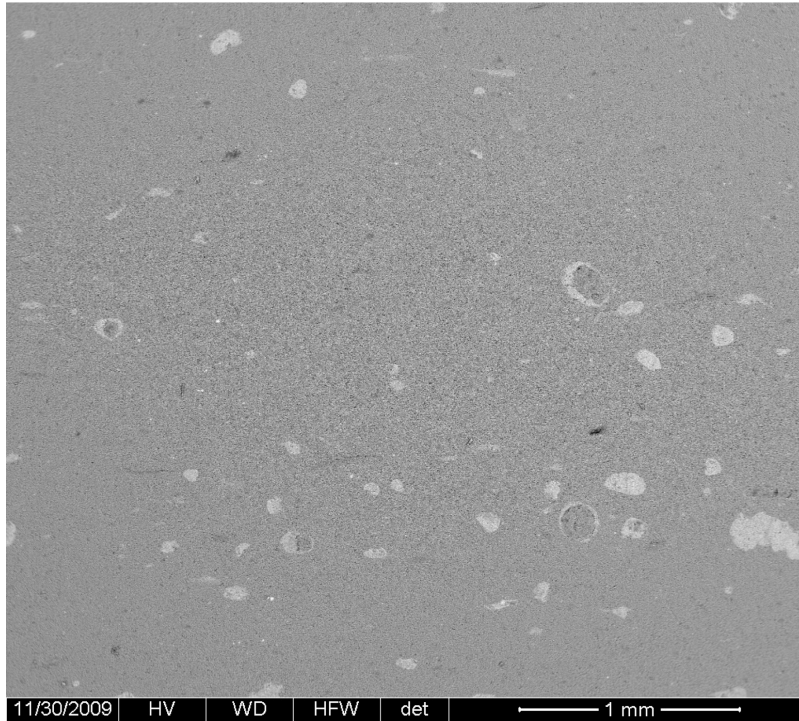


Figure A2.13- BSE image of specimen 08-SX-DST3-3D1e-#3 and silica-cored phosphatic grains

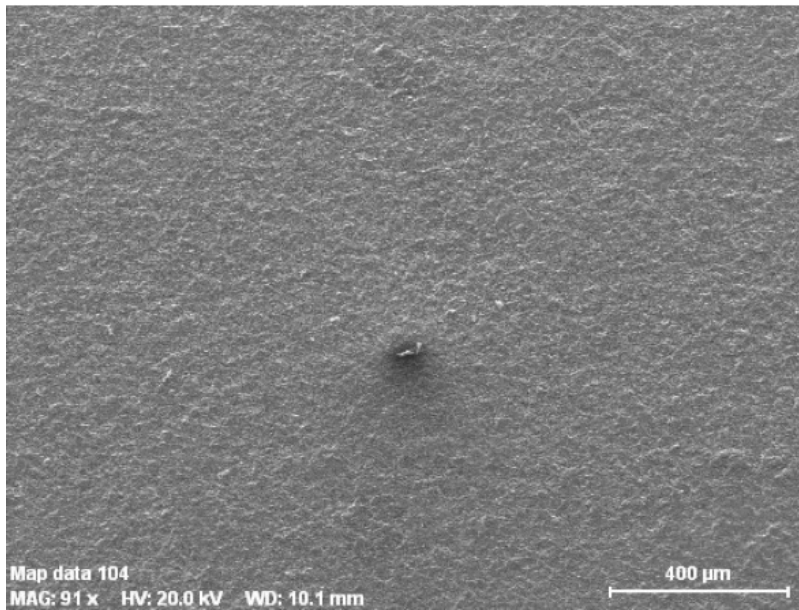


Figure A2.14- SE image of specimen 08-SX-DST3-3D1e-#3 and silica-cored phosphatic grains

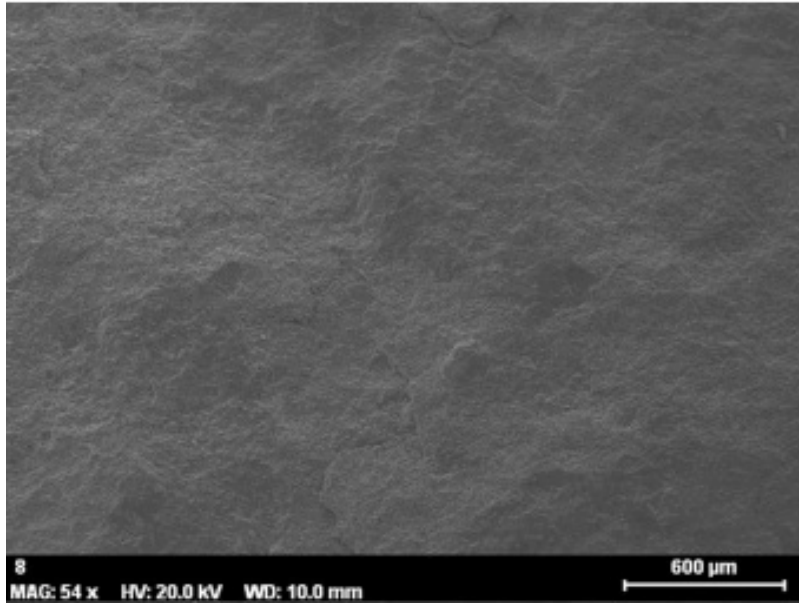


Figure A2.15- SE image of specimen 08-SX-DST3-3E1a-#4

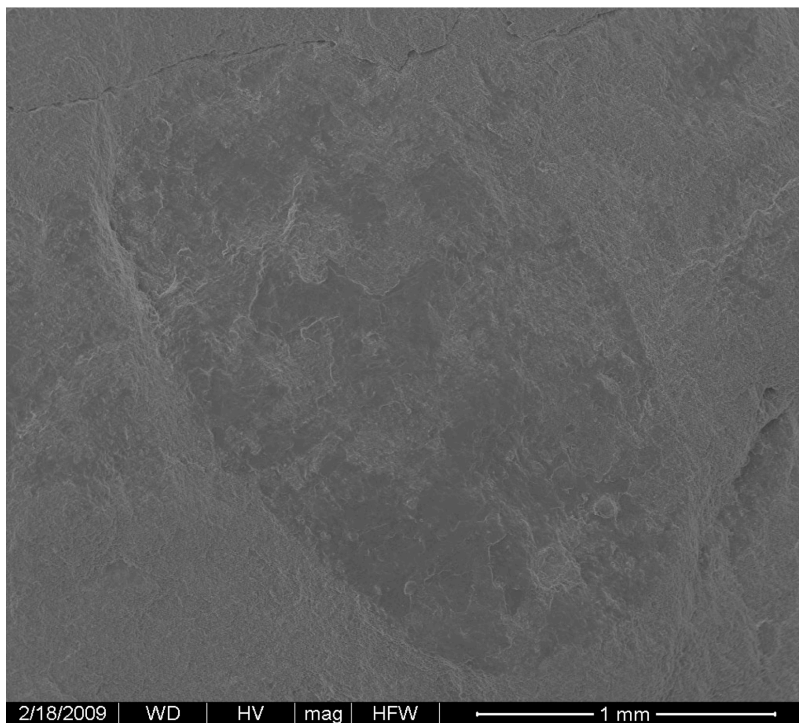


Figure A2.16- BSE image of specimen 08-SX-DST3-3E1b-#1

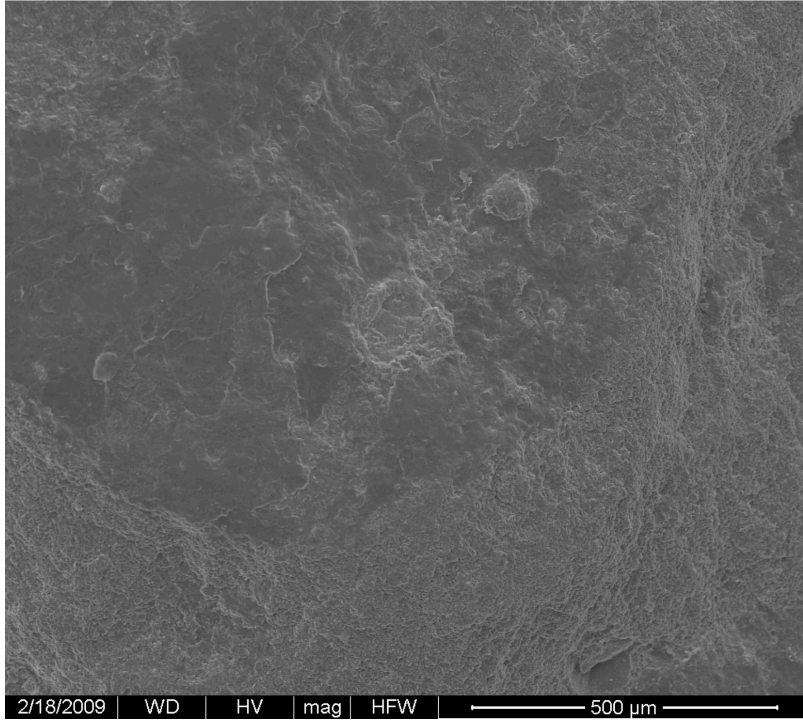


Figure A2.17- Zoom-in BSE image of specimen 08-SX-DST3-3E1b-#1

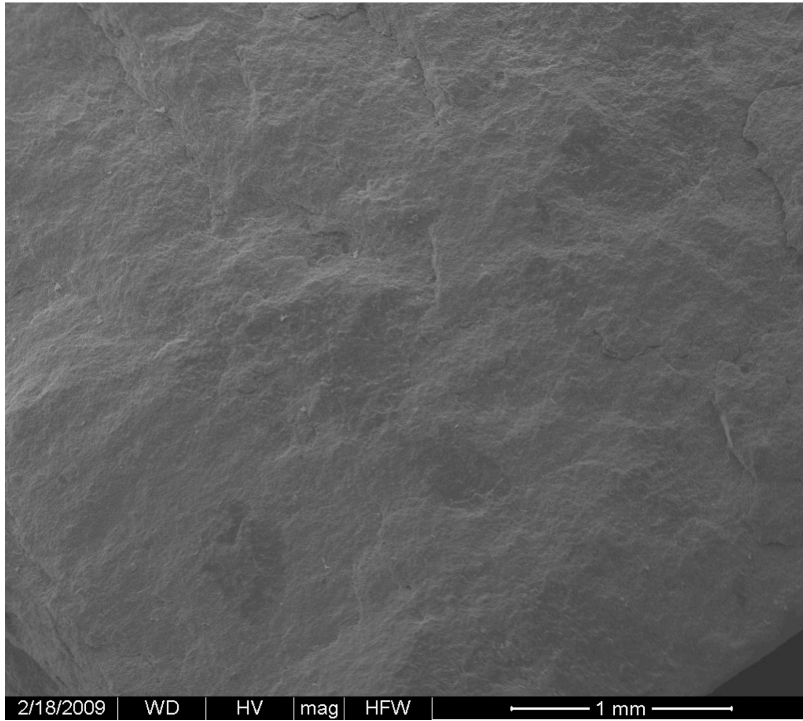


Figure A2.18- BSE image of specimen 08-SX-DST3-3E1d-#1

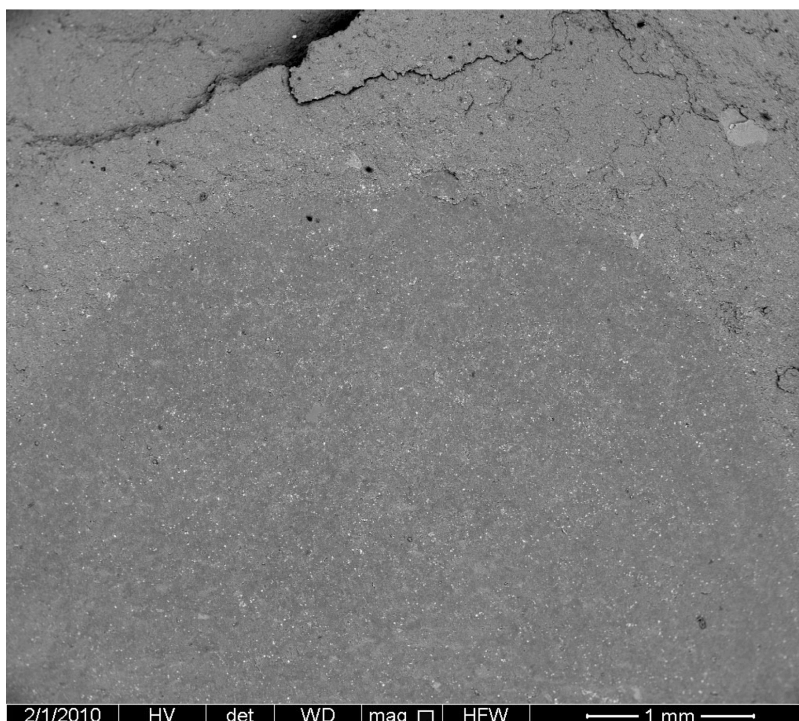


Figure A2.19- BSE image of top portion of specimen JLW-18F-#1

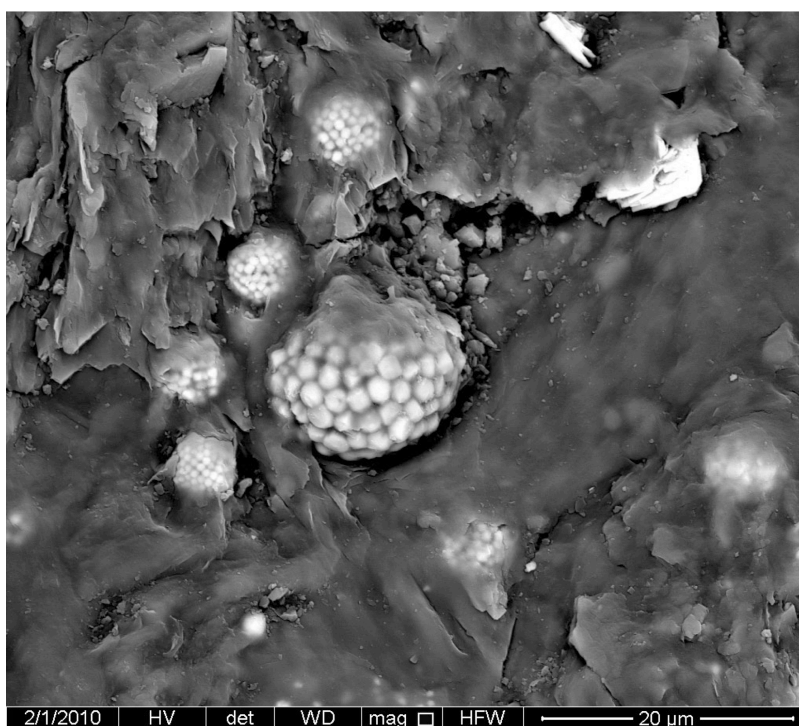


Figure A2.20- Zoom-in BSE image of specimen JLW-18F-#1 showing individual framboids

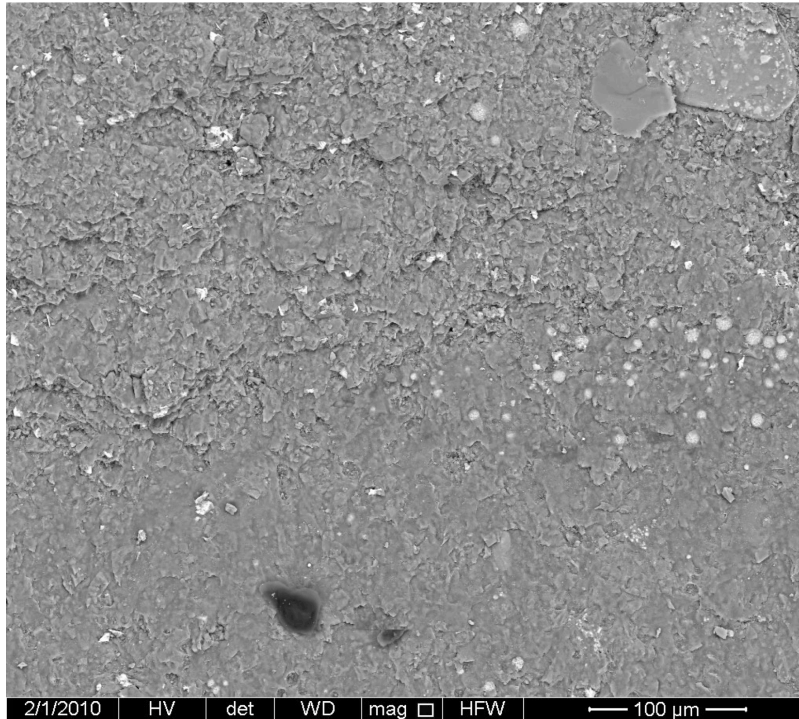


Figure A2.21- Zoom-in BSE image of specimen JLW-18F-#1 showing the upper margin of the fossil of *Tawuia*

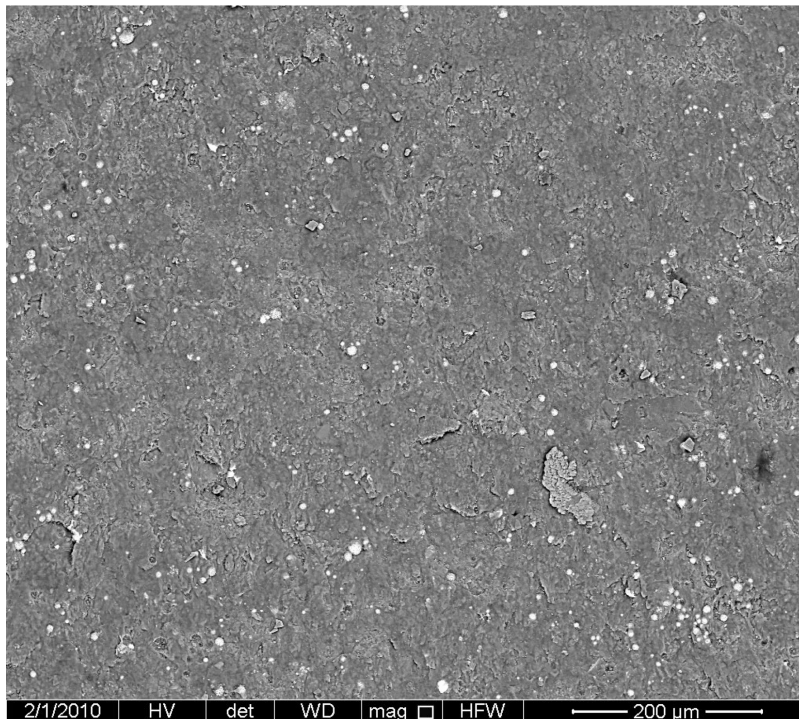


Figure A2.22- Zoom-in BSE image of the central portion of specimen JLW-18F-#1

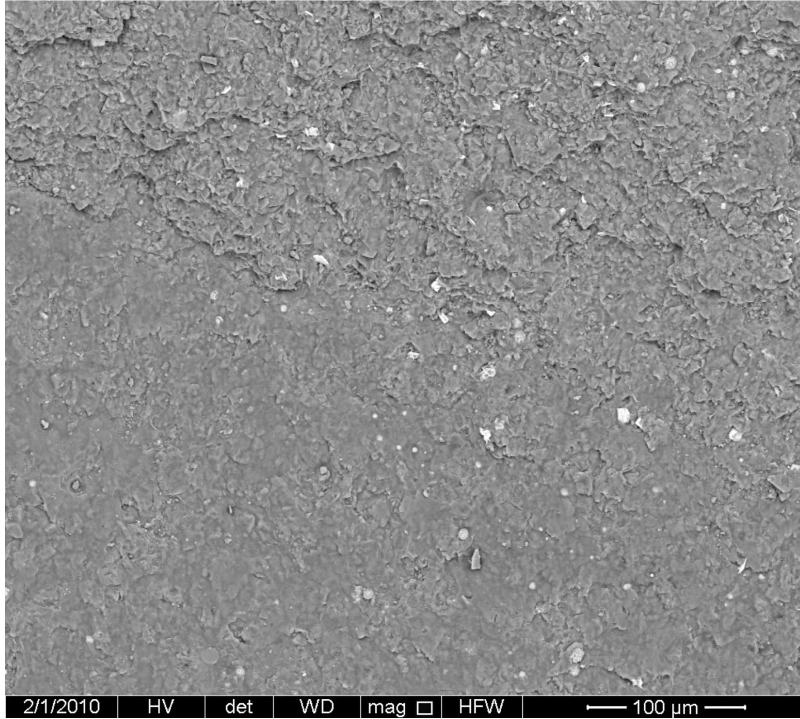


Figure A2.23- Zoom-in BSE image of the portion of specimen JLW-18F-#1 where elemental maps were made

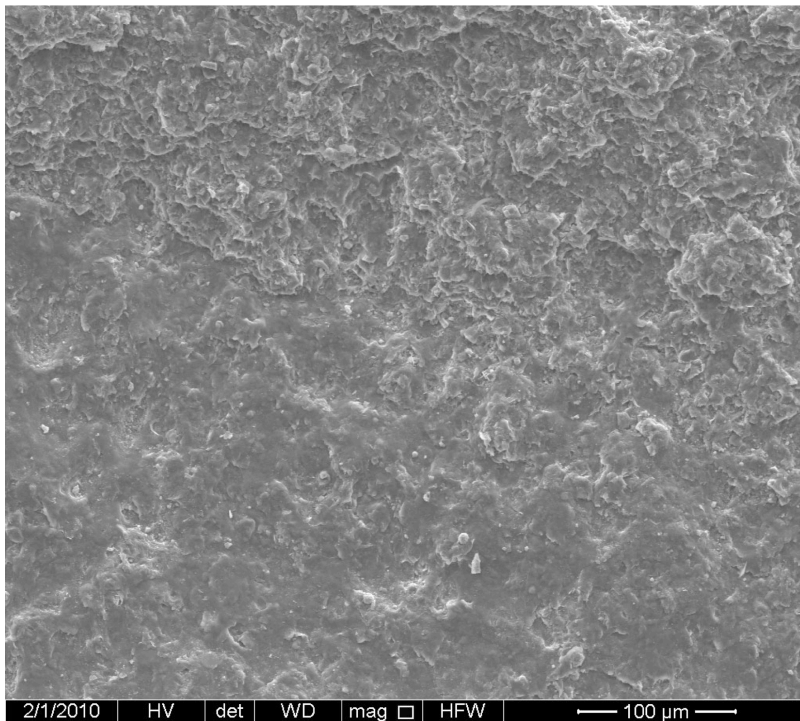


Figure A2.24- Zoom-in SE image of the portion of specimen JLW-18F-#1 where elemental maps were made

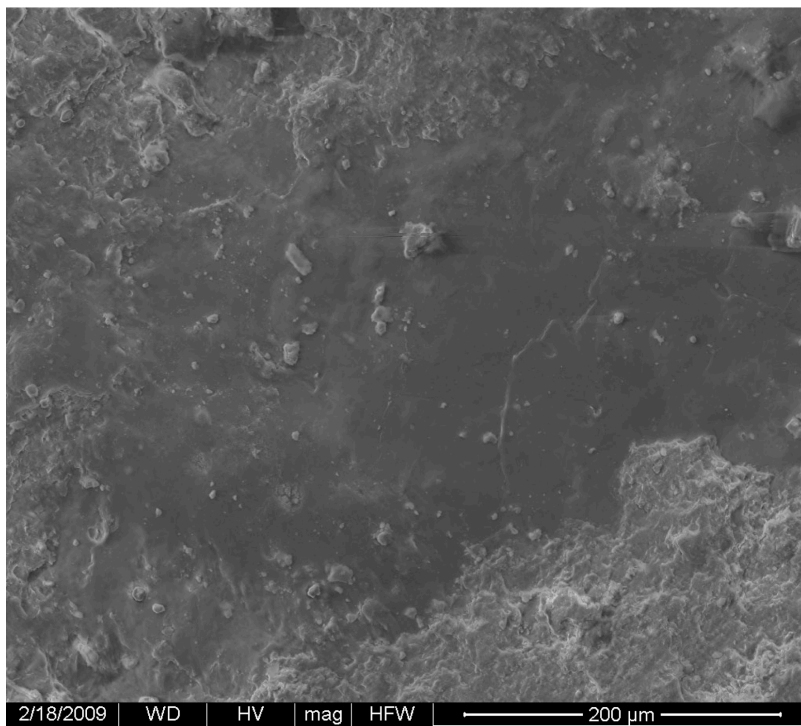


Figure A2.25- BSE image of specimen JLW-27Af-#1

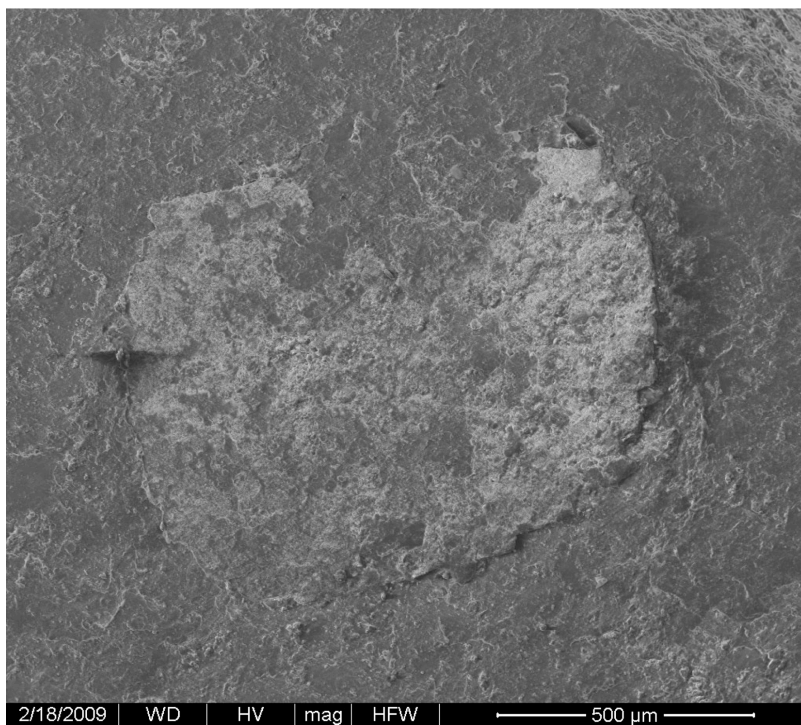


Figure A2.26- BSE image of specimen JLW-27Af-#2

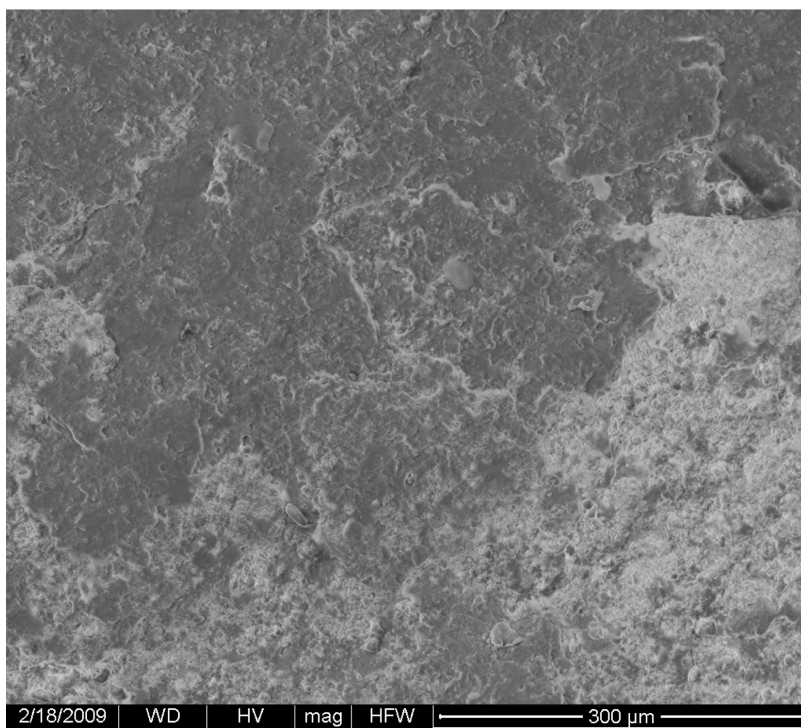


Figure A2.27- Zoom-in BSE image of specimen JLW-27Af-#2

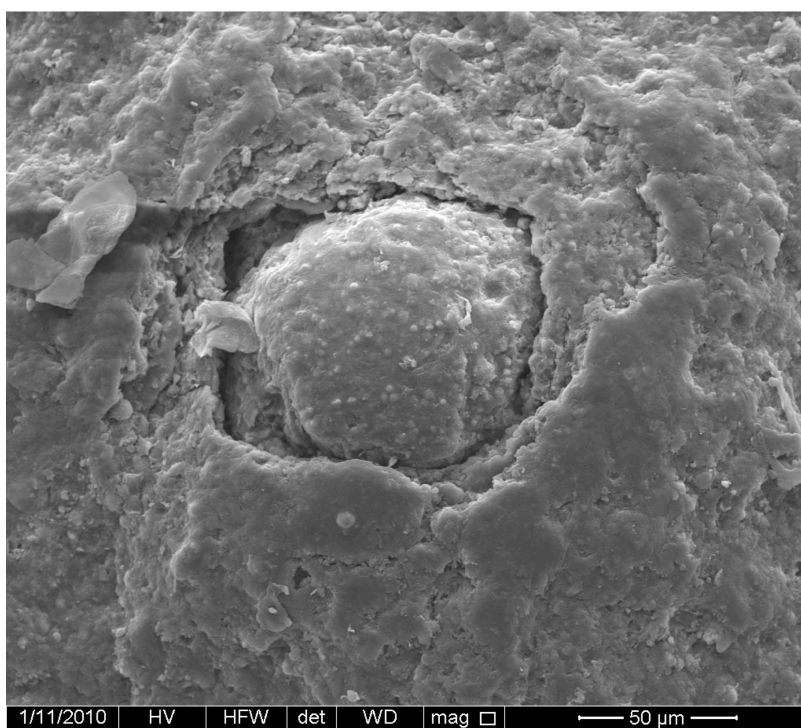


Figure A2.28- BSE image of spherical object on JLW-F10-1

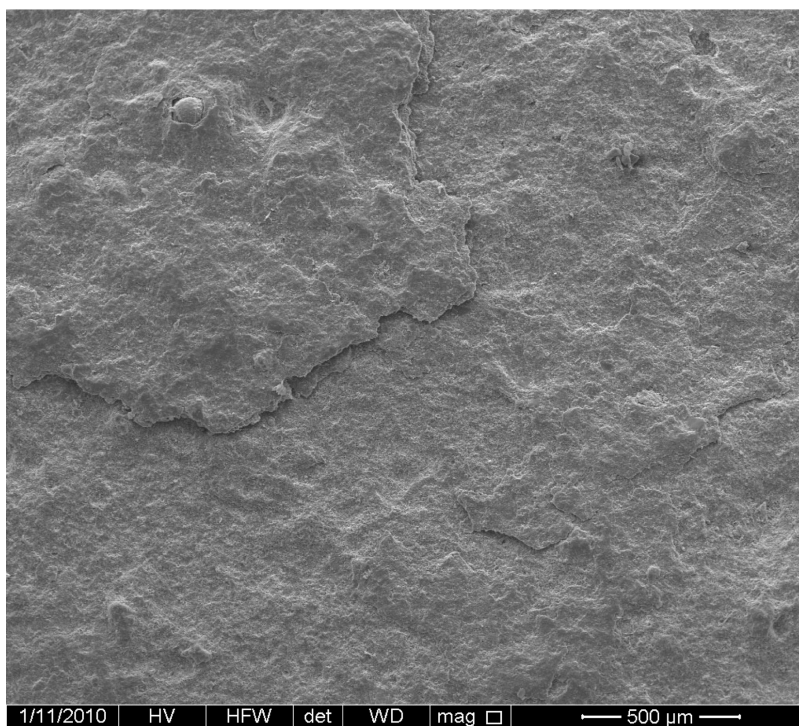


Figure A2.29- BSE image of specimen JLW-F10-1-#1

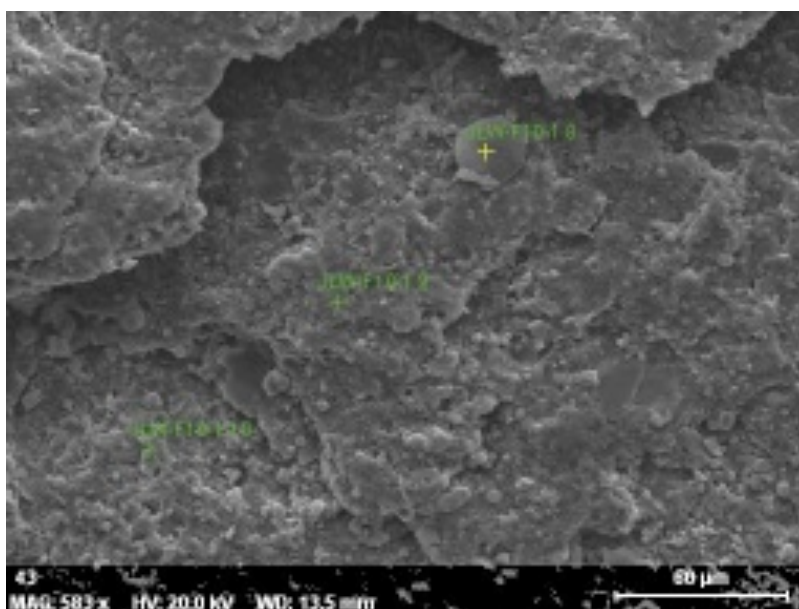


Figure A2.30- Zoom-in SE image of the portion of specimen JLW-F10-1-#1 where elemental maps were made

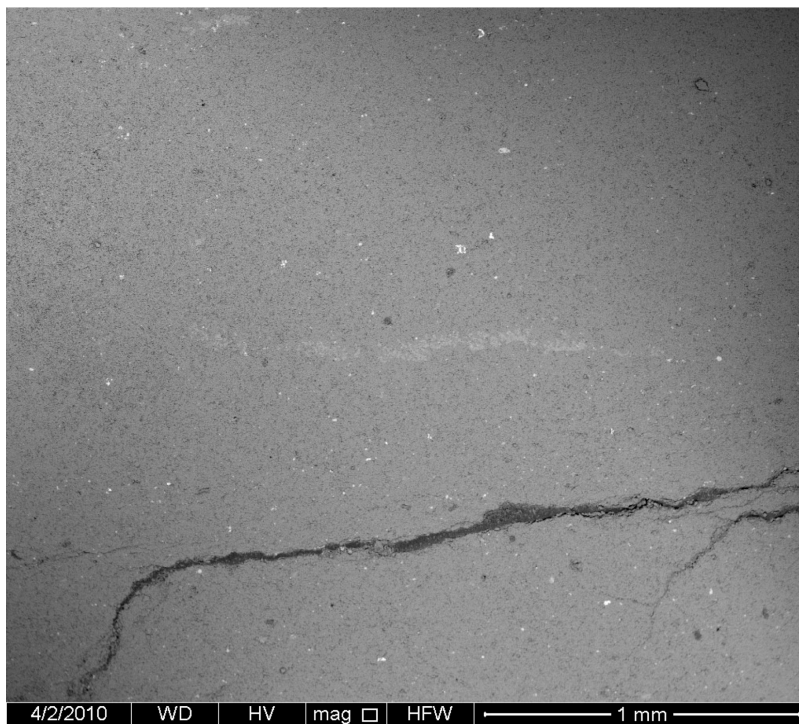


Figure A2.31- BSE image of specimen JLW-42.5-1-#1

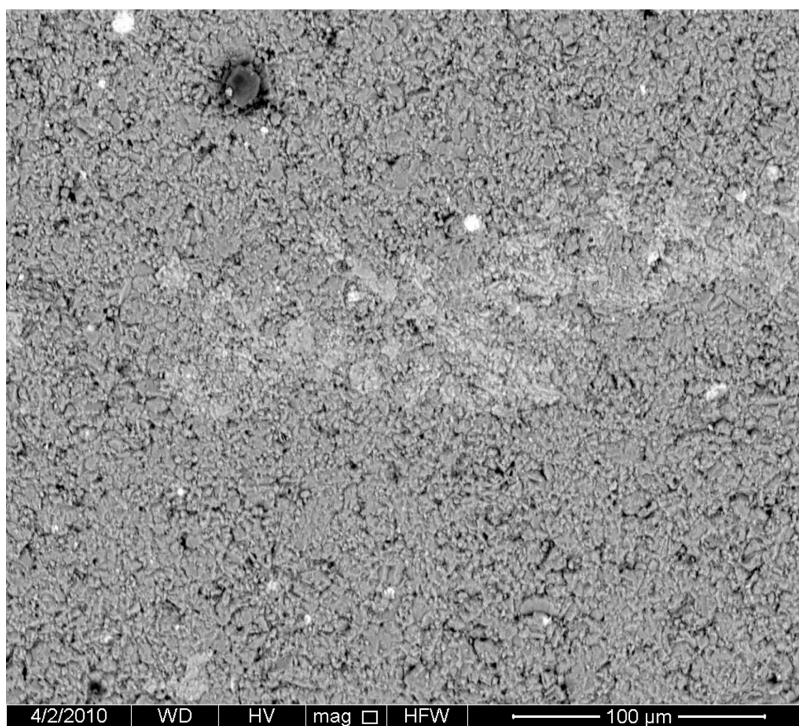


Figure A2.32- Zoom-in BSE image of specimen JLW-42.5-1-#1

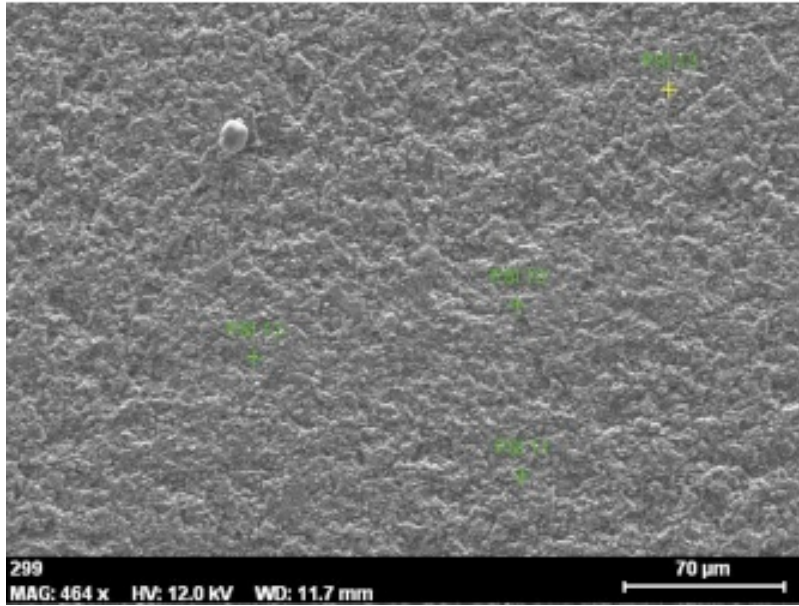


Figure A2.33- Zoom-in SE image of specimen JLW-42.5-#1 where elemental point analyses were done

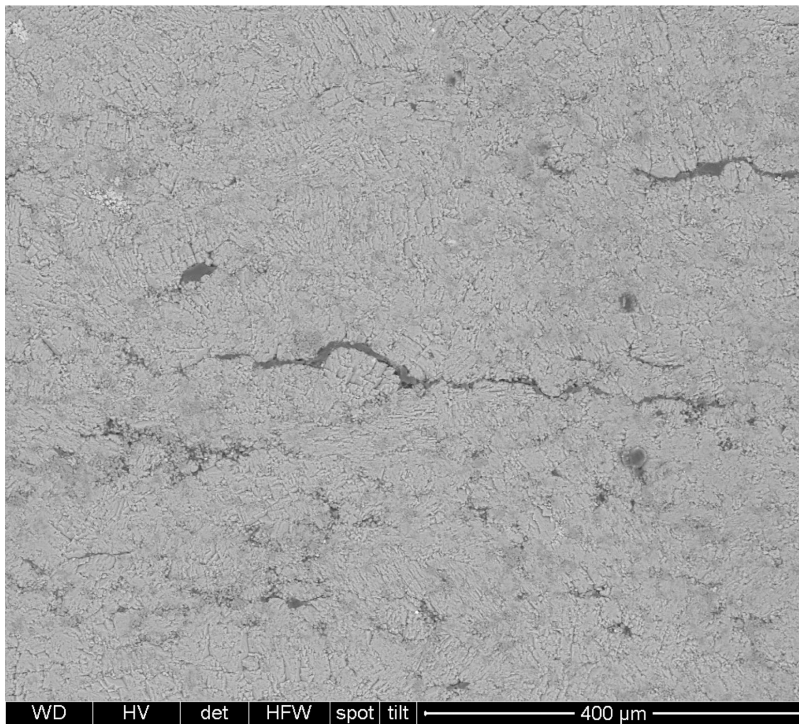


Figure A2.34- BSE image of specimen SBT-9-#3

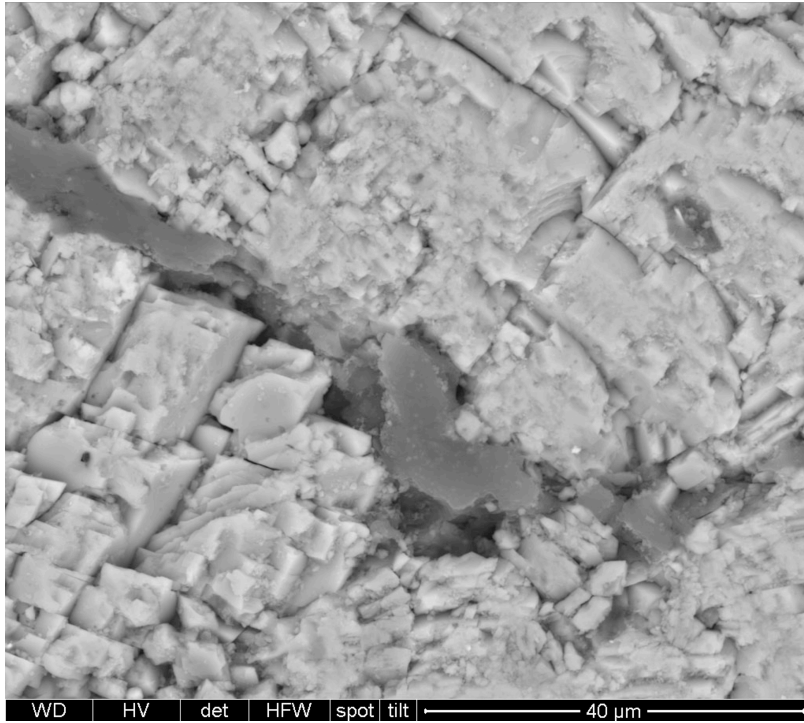


Figure A2.35- Zoom-in BSE image of specimen SBT-9-#3

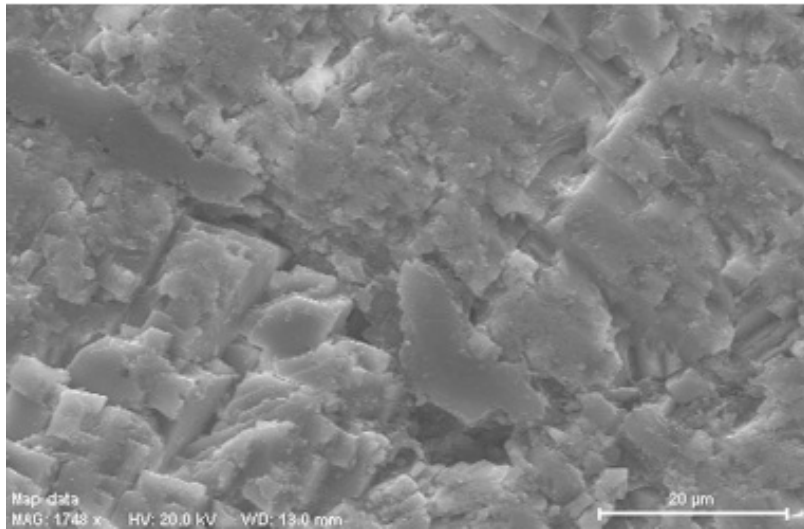


Figure A2.36- Zoom-in SE image of specimen SBT-9-#3