

*CHUARIA, VENDOTAENIA, AND THE TAPHONOMY OF THE CARBONACEOUS
COMPRESSION*

Evan Pelzner Anderson

Thesis submitted to the faculty of the Virginia Polytechnic Institute and State University in
partial fulfillment of the requirements for the degree of

Master of Science
In
Geosciences

Shuhai Xiao, Chair
Michal J. Kowalewski
J. Fred Read

May 3, 2010
Blacksburg, VA

Keywords: *Vendotaenia*, *Chuarina*, Carbonaceous Compression, Taphonomy, Elemental Mapping

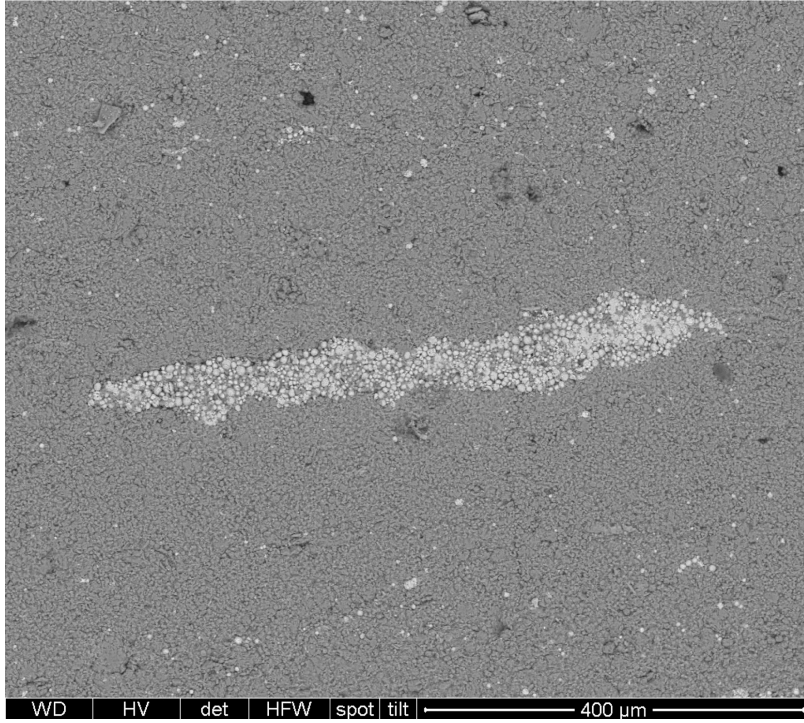


Figure A2.37- BSE image of specimen SFT-15-2-#9

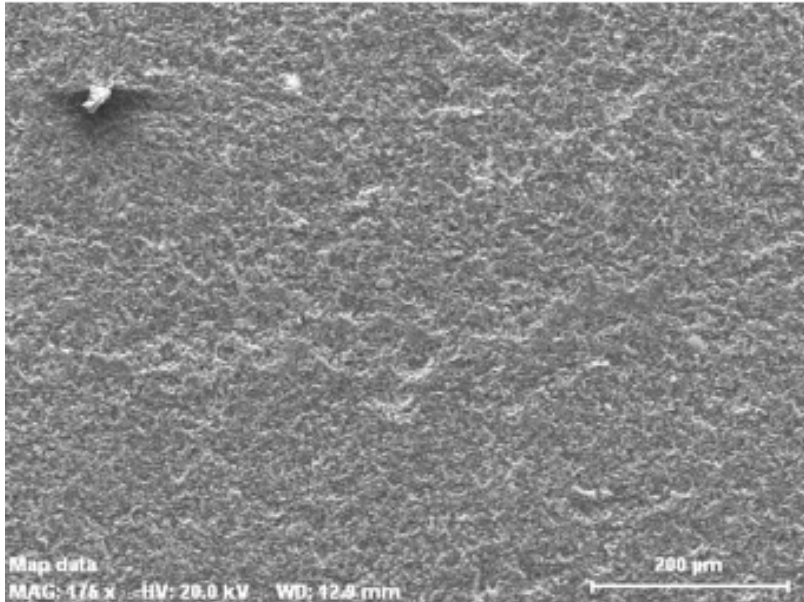


Figure A2.38- SE image of specimen SFT-15-2-#9

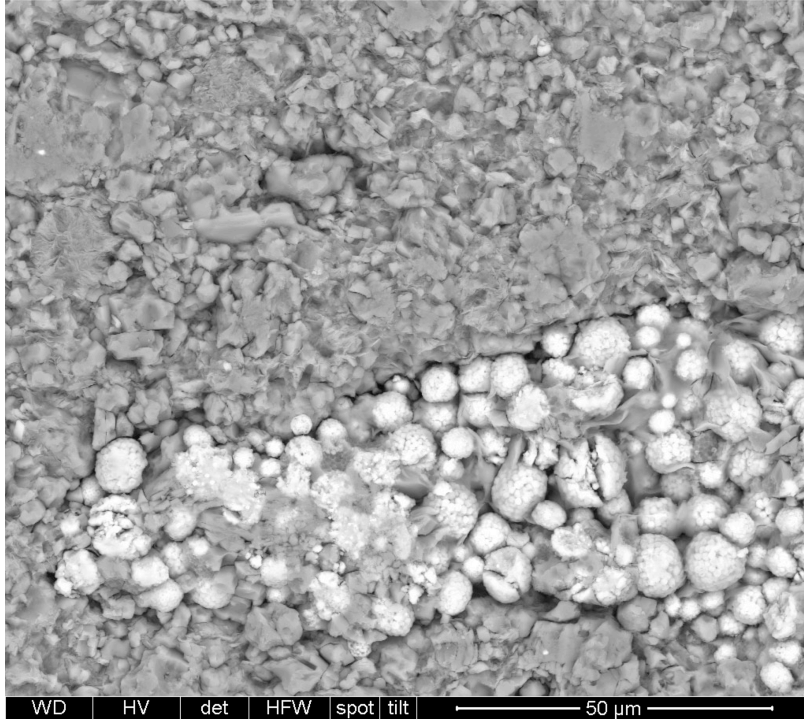


Figure A2.39- Zoom-in BSE image of specimen SFT-15-2-#9

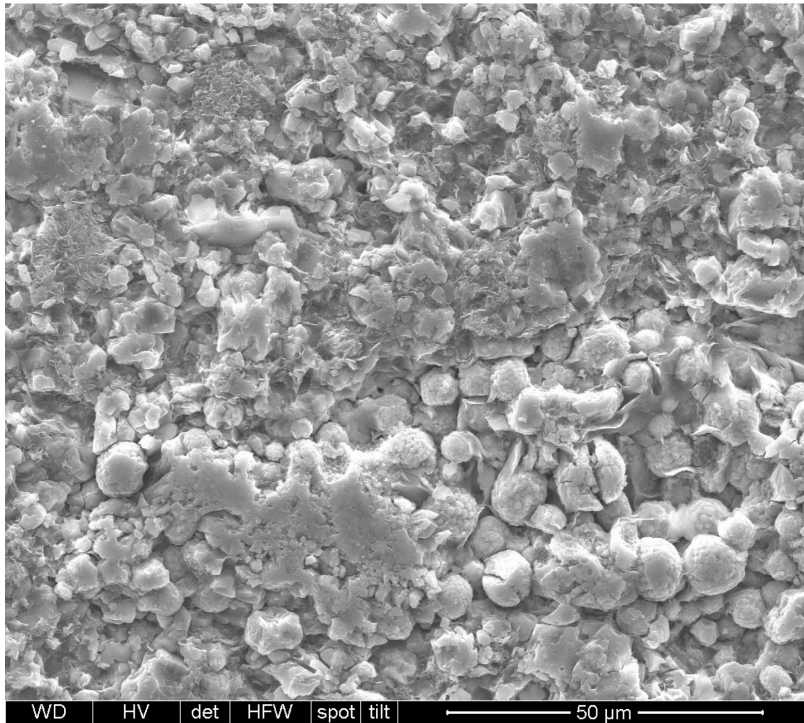


Figure A2.40- Zoom-in SE image of specimen SFT-15-2-#9

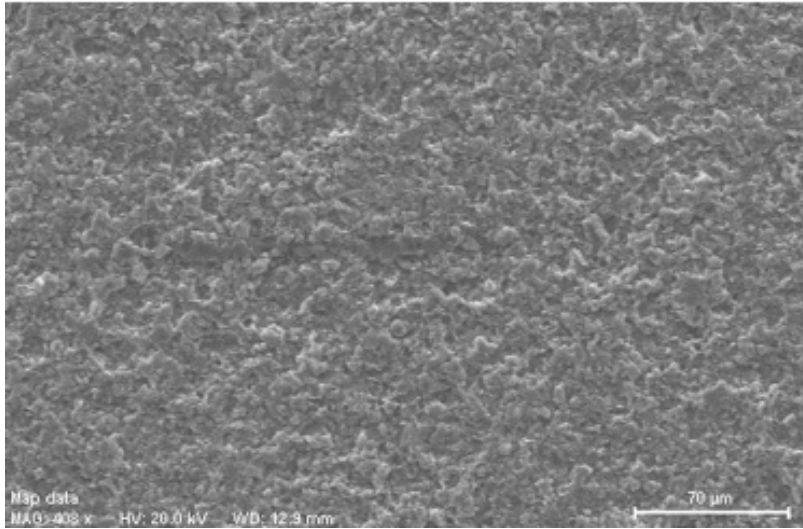


Figure A2.41- SE image of specimen SFT-15-2-#11

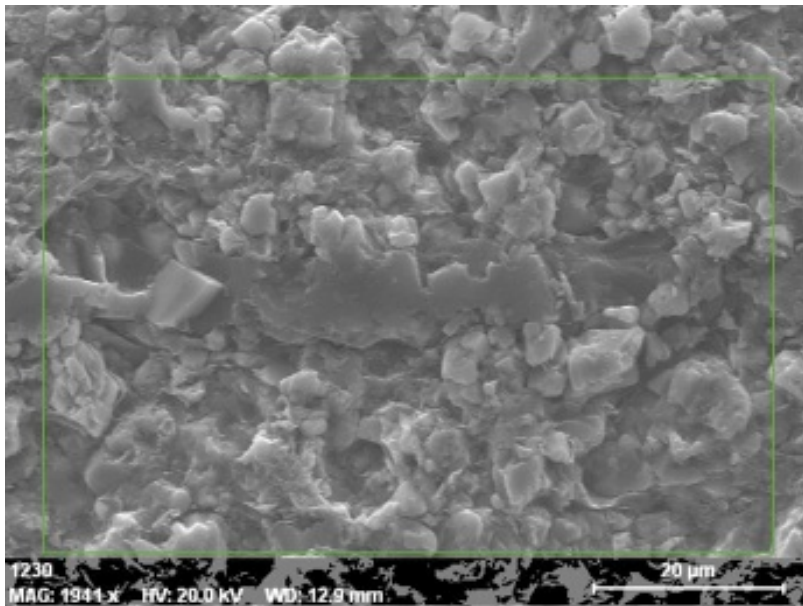


Figure A2.42- Zoom-in SE image of the portion of specimen SFT-15-2-#11 where elemental maps were made

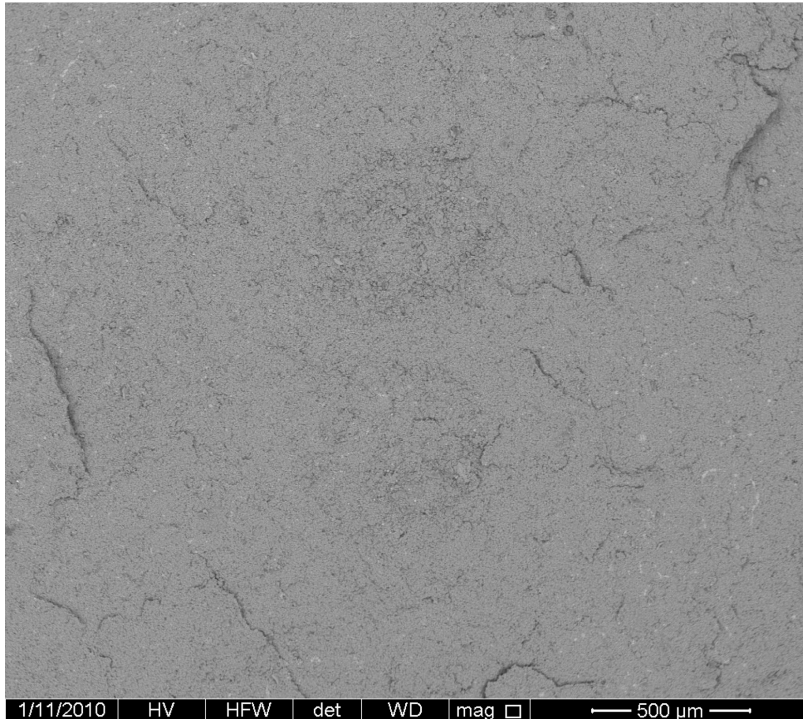


Figure A2.43- BSE image of specimens SFT-24-1-#6-7

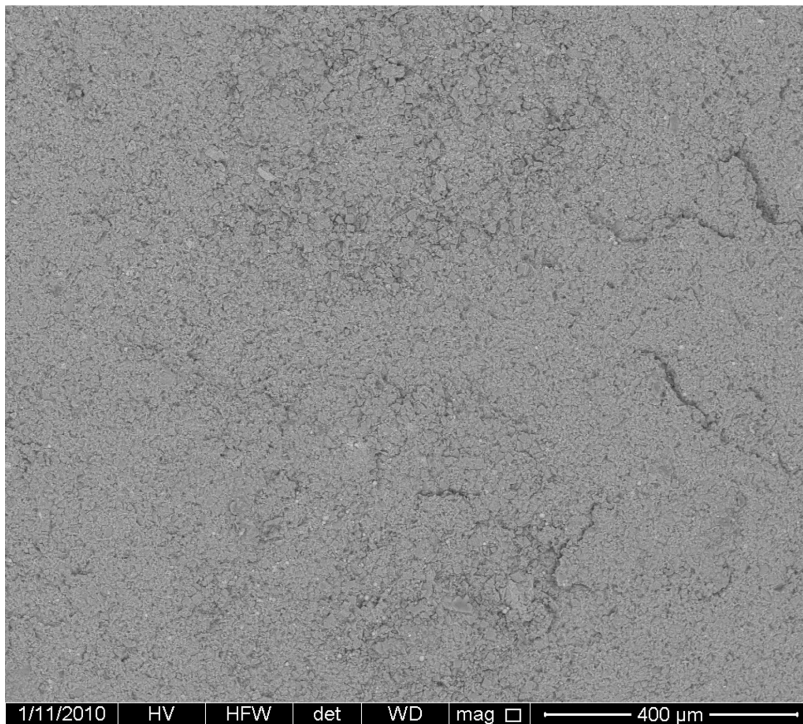


Figure A2.44- Zoom-in BSE image of specimens SFT-24-1-#6-7

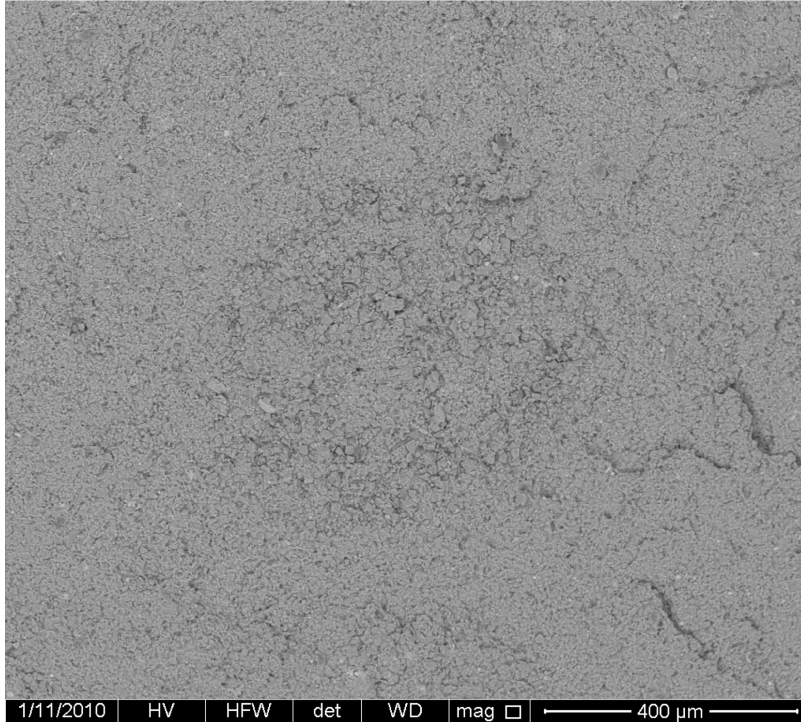


Figure A2.45- Zoom-in BSE image of specimen SFT-24-1-#7 with SFT-24-1-#6 on the bottom margin of the image

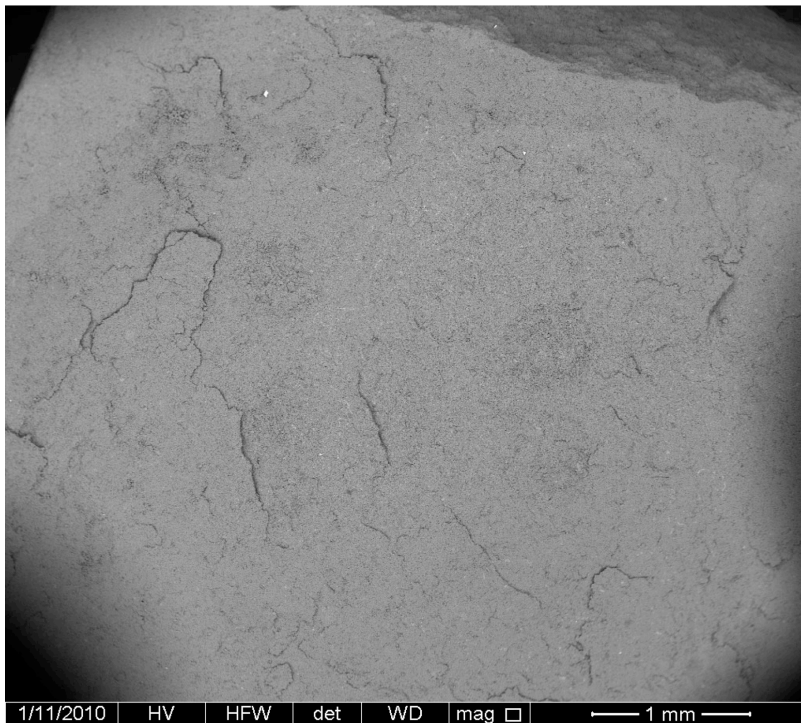


Figure A2.46- BSE image of specimens SFT-24-1-#4 and 6-7

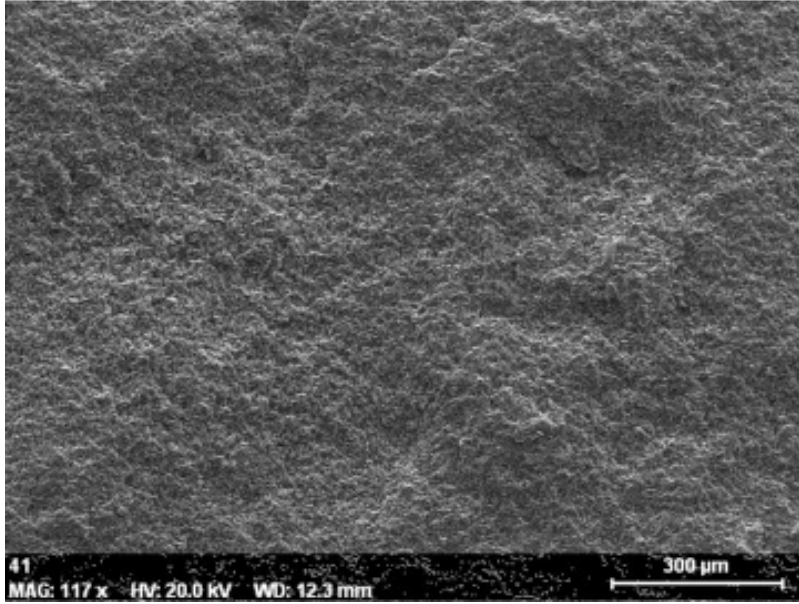


Figure A2.47- SE image of specimens SFT-24-1-#6-7

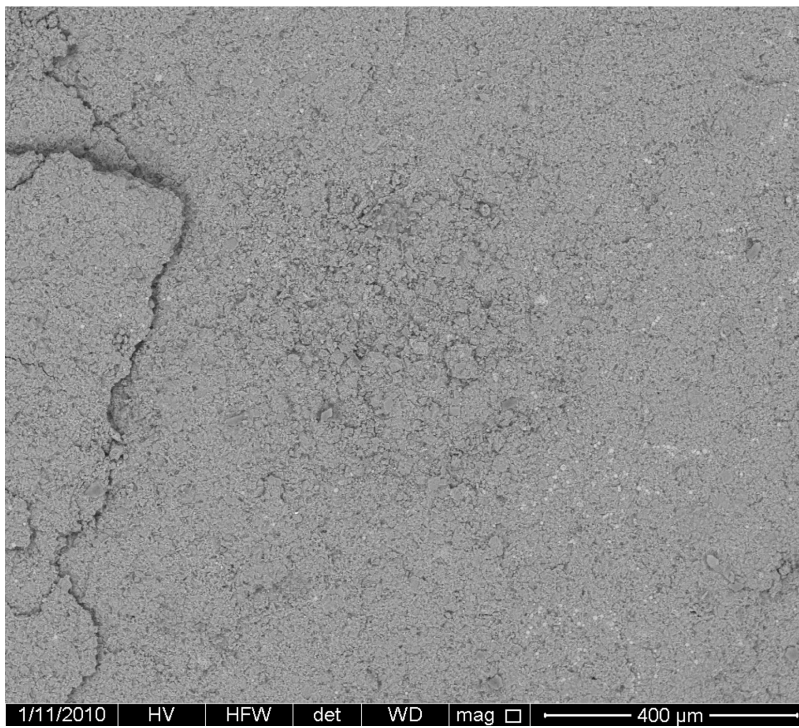


Figure A2.48- BSE image of specimen SFT-24-1-#4

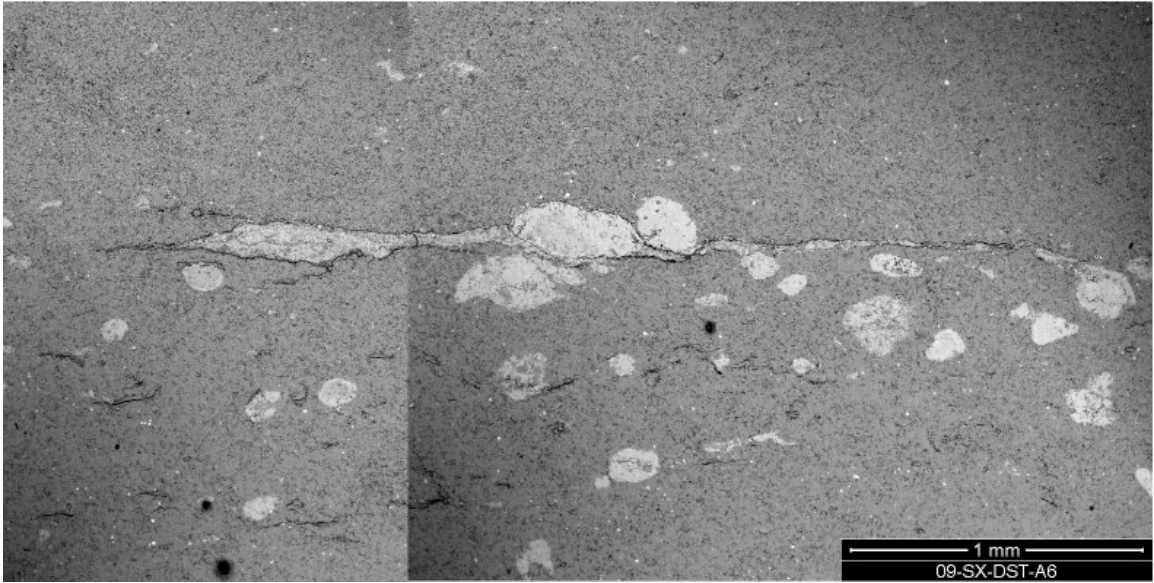


Figure A2.49- BSE image of 09-SX-DST-A6-#1

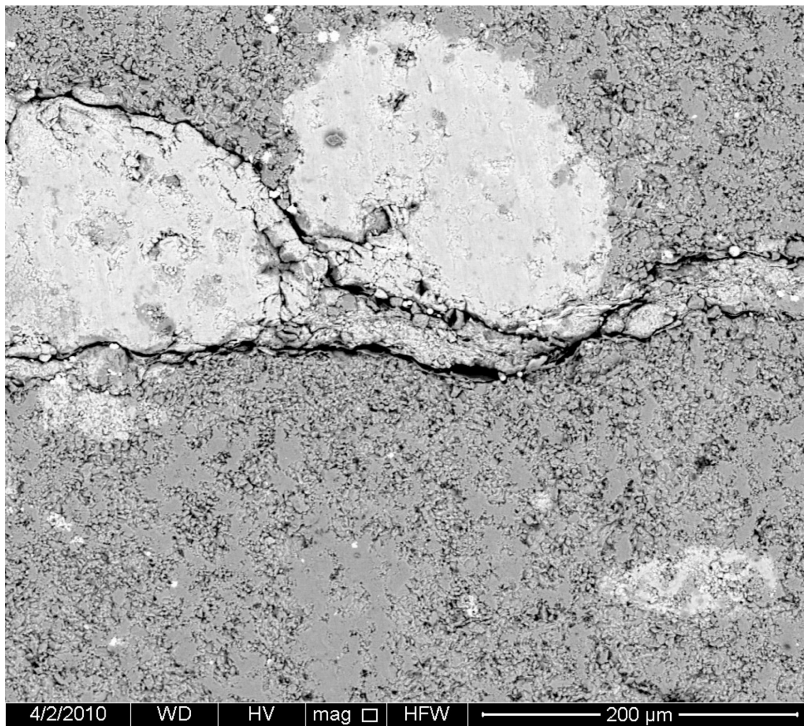


Figure A2.50- Zoom-in BSE image of 09-SX-DST-A6-#1

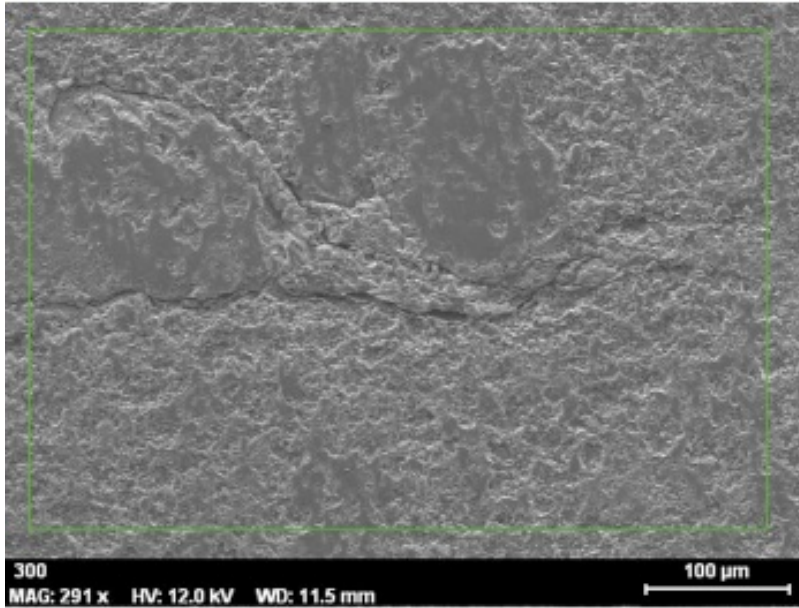


Figure A2.51- Zoom-in BSE image of the portion of specimen 09-SX-DST-A6-#1 where elemental maps were made



Figure A2.52- BSE image of specimen 09-SX-DST-F-#1

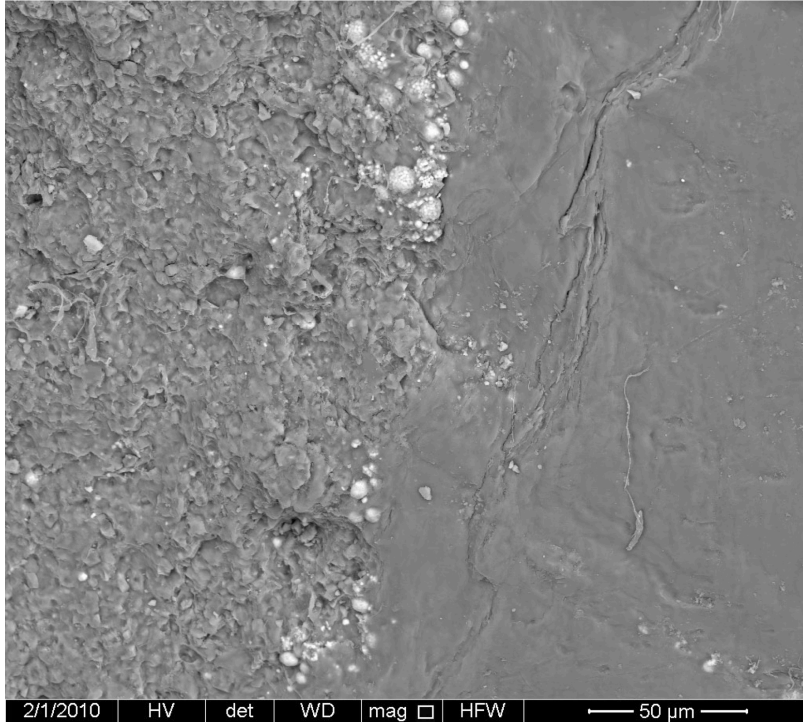


Figure A2.53- Zoom-in BSE image of specimen 09-SX-DST-F-#1

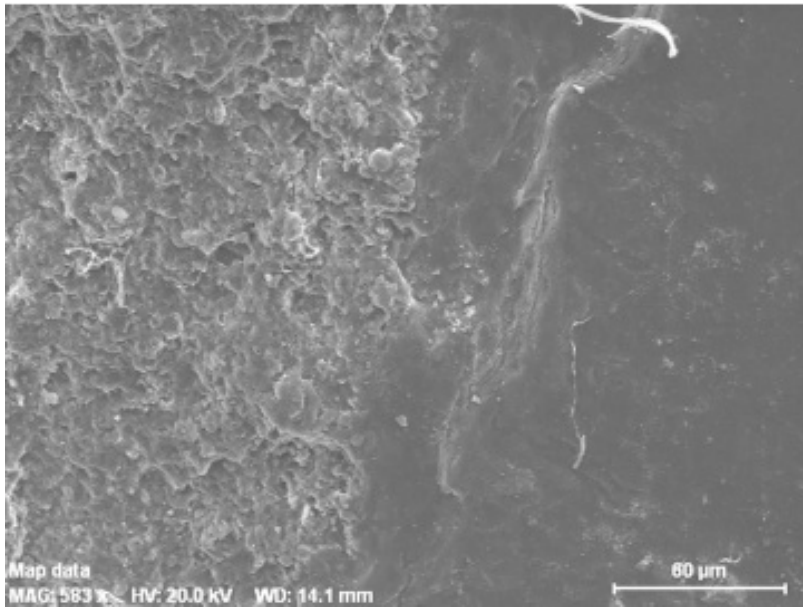


Figure A2.54- Zoom-in SE image of specimen 09-SX-DST-F-#1

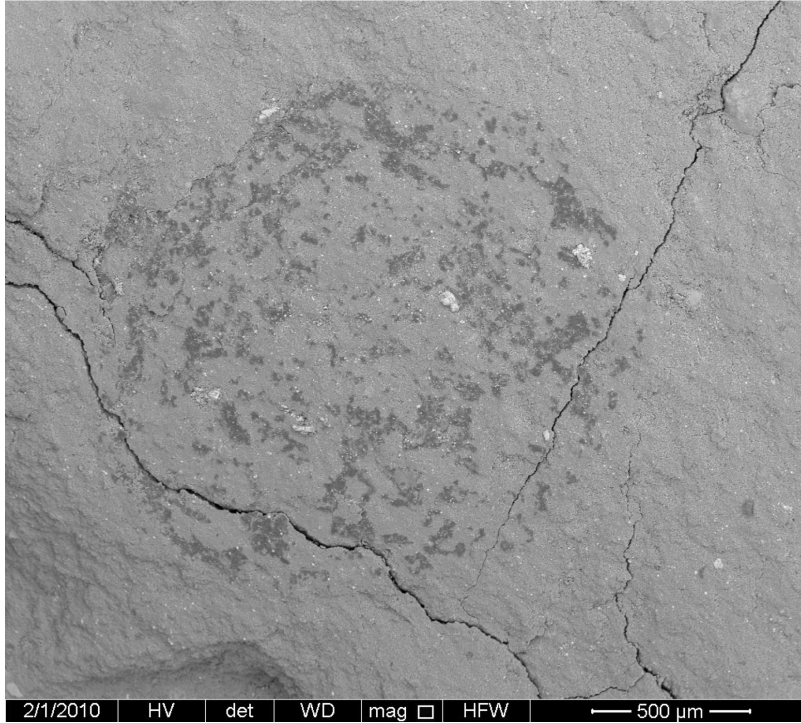


Figure A2.55- BSE image of specimen 09-SX-DST-F-#2

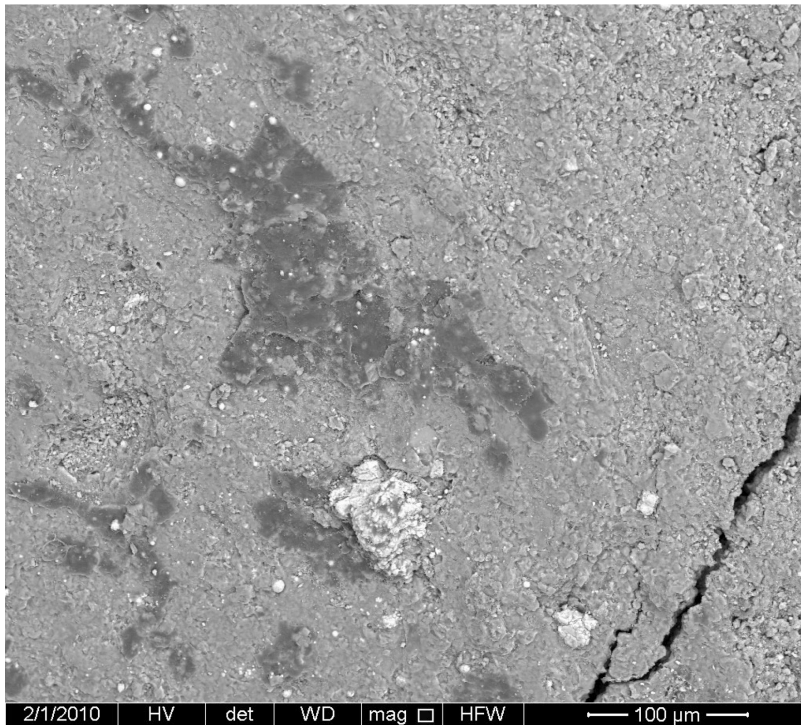


Figure A2.56- Zoom-in BSE image of specimen 09-SX-DST-F-#2

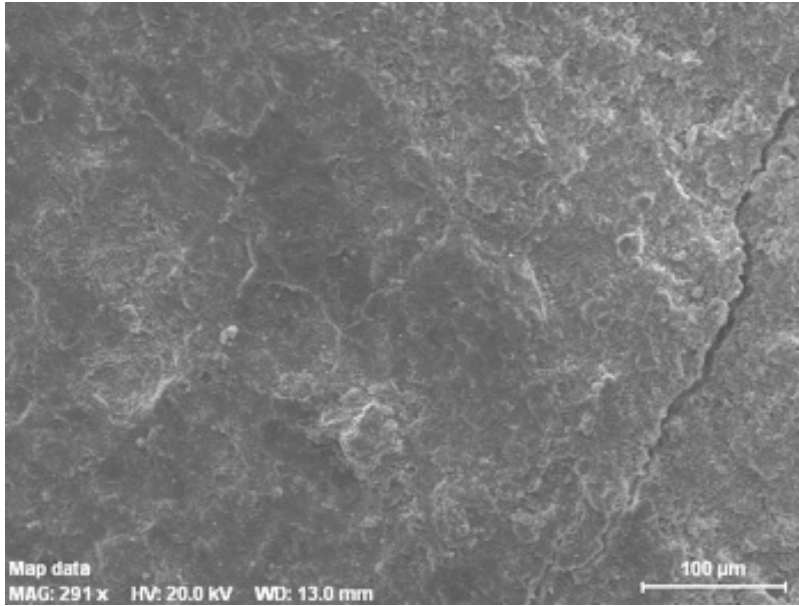


Figure A2.57- Zoom-in SE image of specimen 09-SX-DST-F-#2

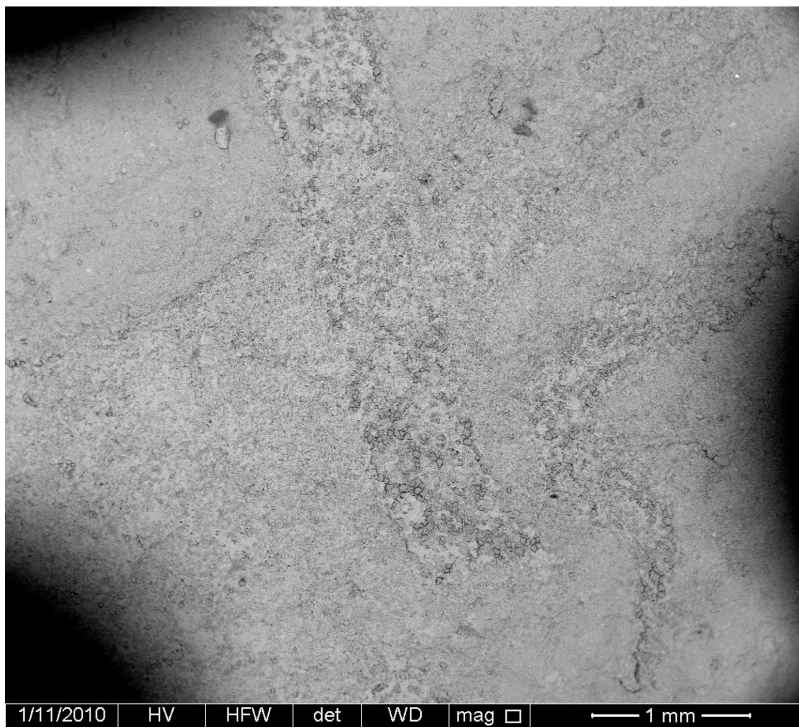


Figure A2.58- BSE image of specimen MH-7-#1

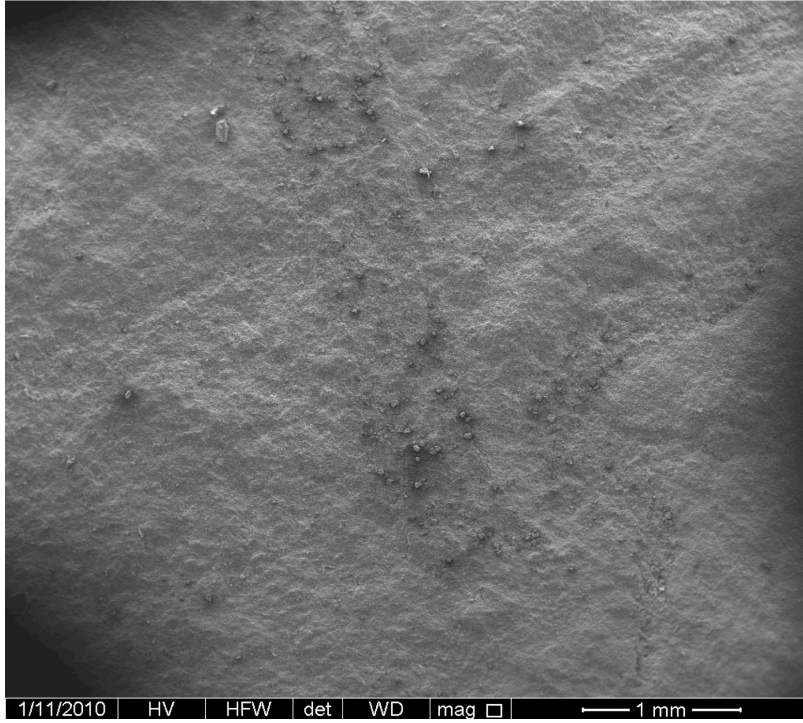


Figure A2.59- SE image of specimen MH-7-#1

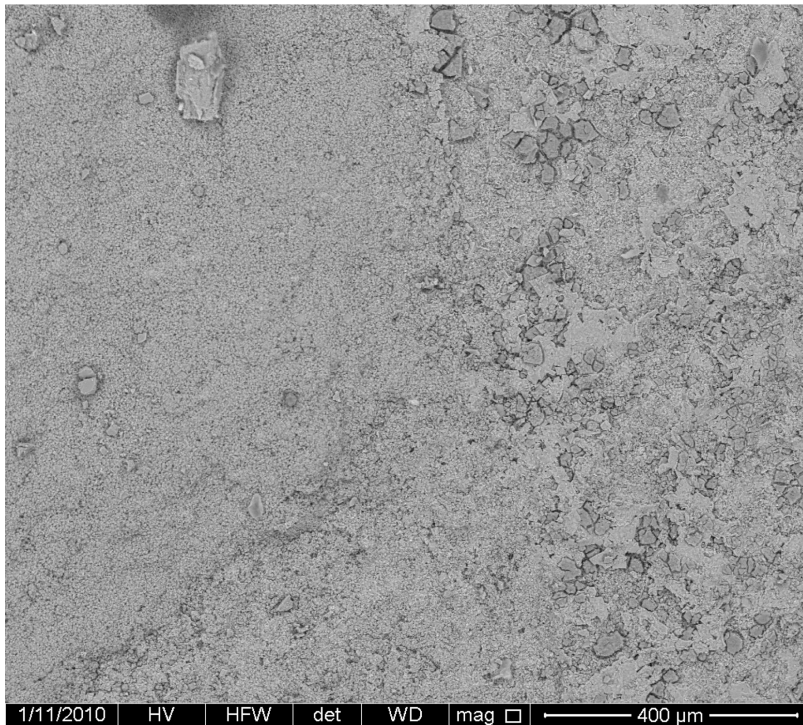


Figure A2.60- Zoom-in BSE image of specimen MH-7-#1

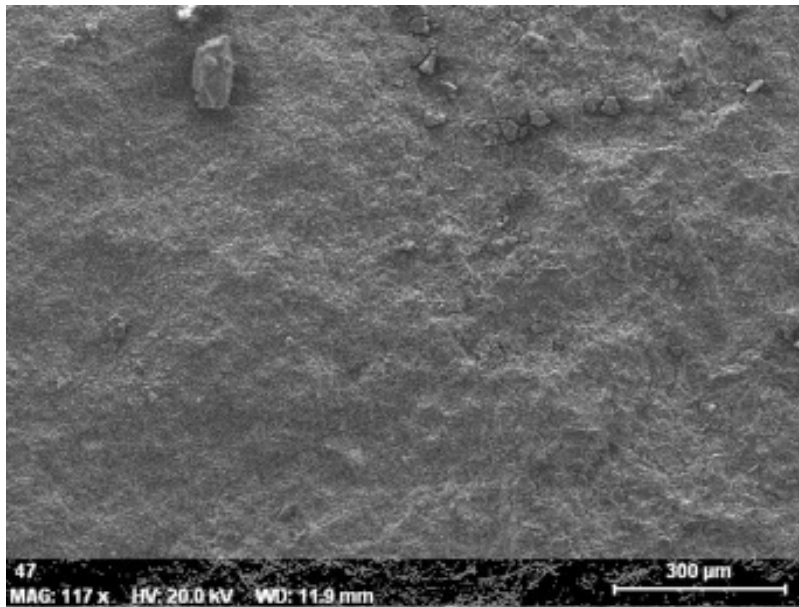


Figure A2.61- Zoom-in SE image of specimen MH-7-#1

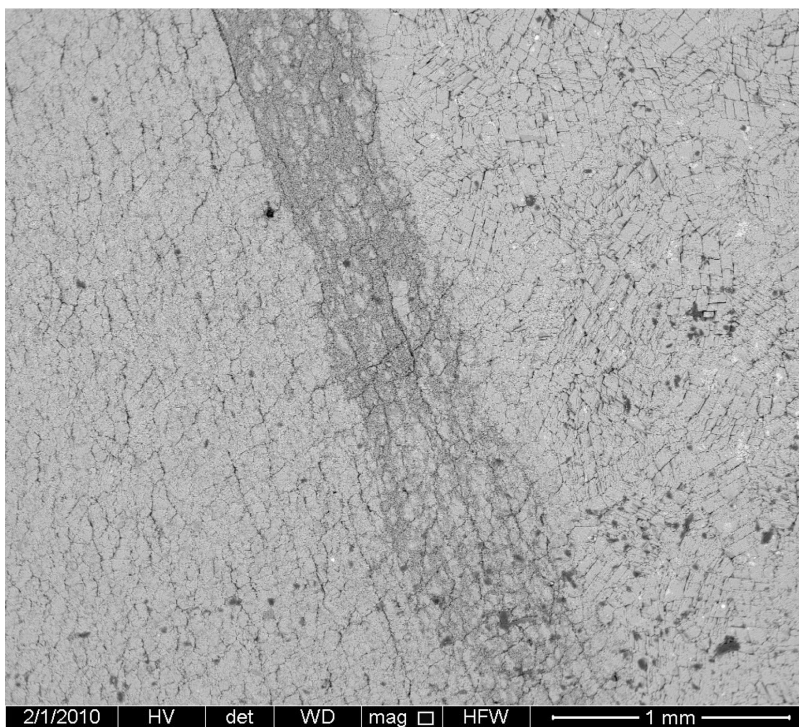


Figure A2.62- Siltstone layer with *Vendotaenia* ribbons in 03-WH-1

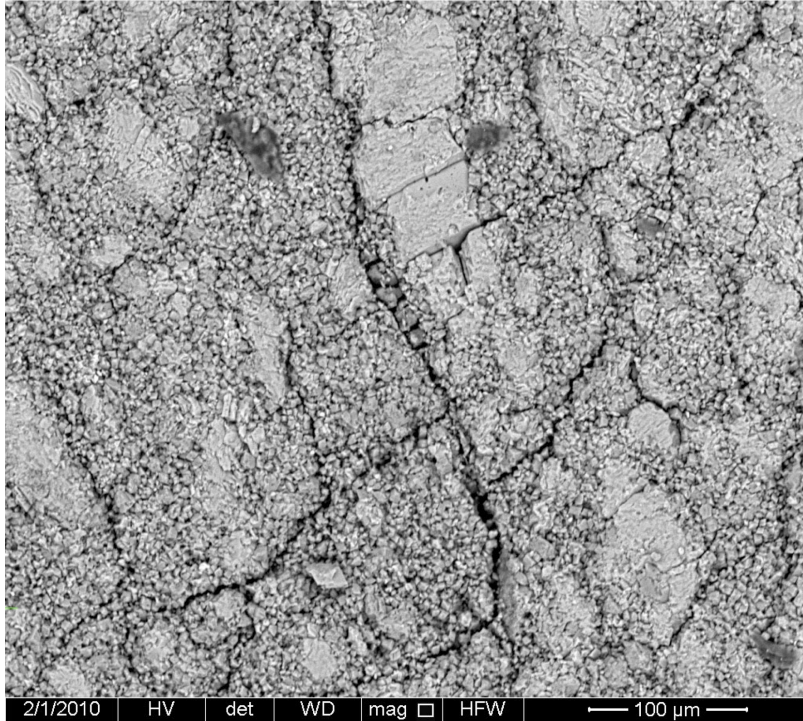


Figure A2.63- Zoom-in of siltstone layer showing a possible *Vendotaenia* ribbon in 03-WH-1

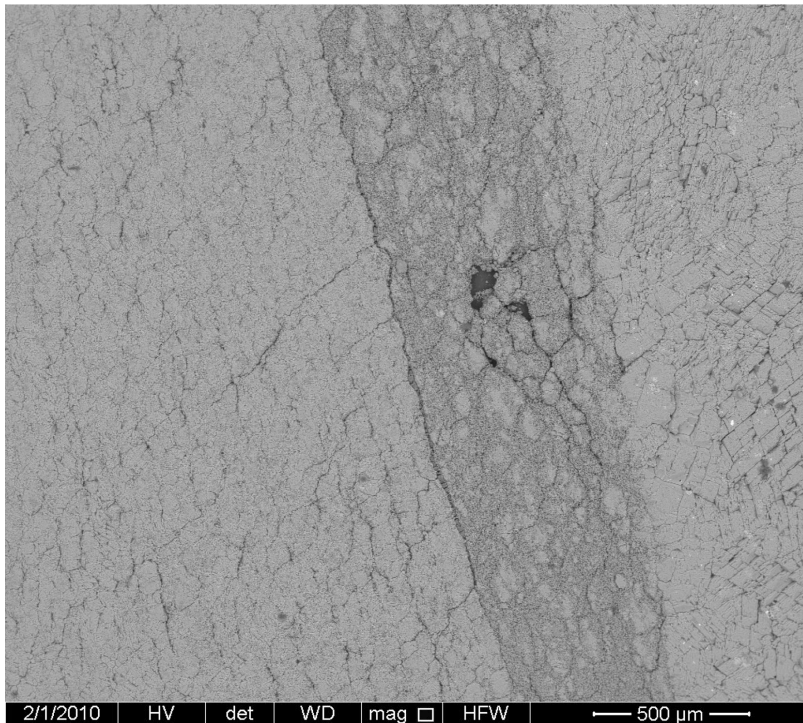


Figure A2.64- BSE image of specimen 03-WH-1-#1 on the left margin of the siltstone layer

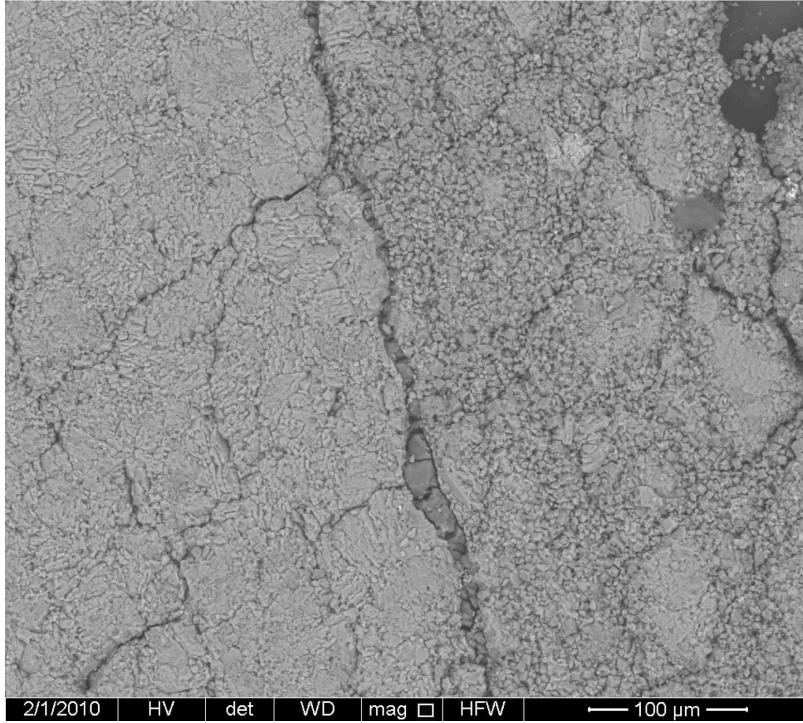


Figure A2.65- Zoom-in BSE image of specimen 03-WH-1-#1

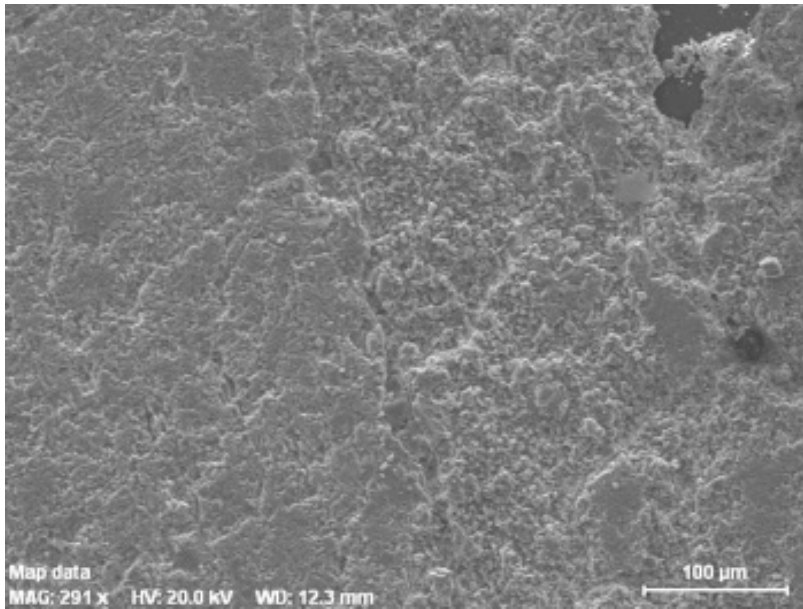


Figure A2.66- Zoom-in SE image of specimen 03-WH-1-#1