



Pleasure Gardens

Laura Grant





TABLE OF CONTENTS

Title Page	i
Table of Contents	ii
List of Images	iii
Introduction	1
Paintings	2-15
Sketches	18-39
References	42-52



LIST OF IMAGES

- img 01 Oriental Poppy, 20" x 24", Acrylic on Canvas, 2016
- img 02 Untitled 20" x 24", Acrylic on Canvas, 2016
- img 03 You can learn a lot of things from the flowers, 42"X 55", Acrylic on Canvas, 2016
- img 04 Dinosaur Garden, 61"X 55", Acrylic on Canvas, 2016
- img 05 Cheeto Portal, 20" x 24", Acrylic on Canvas, 2016
- img 06 Eyeball Fence, 20" x 24", Acrylic on Canvas, 2016
- img 07 Untitled, 20" x 24", Acrylic on Canvas, 2016
- img 08 Untitled, 24" x 36", Acrylic on Canvas, 2016
- img 09 Untitled, 24" x 36", Acrylic on Canvas, 2016
- img 10 Untitled, 24" x 36", Acrylic on Canvas, 2016
- img 11 Untitled, 36" x 36", Acrylic on Canvas, 2016
- img 12 Untitled, 36" x 36", Acrylic on Canvas, 2016
- img 13 Untitled, 36" x 36", Acrylic on Canvas, 2016
- img 14 Untitled, 24" x 36", Acrylic on Canvas, 2016

img 15- 36 Sketches

- img 37 Fluted fountain. Garden Painting Detail. (now in Museo Nazionale, Naples)
- img 38 Conifer in recess. From Livia's garden room from Prima Porta (now in the museo Nazionale delle Terme, Rome.
- img 39 Garden Representation. Pompeii
- img 40 Hell Mouth, 1552-1585, Bomarzo, Italy
- img 41 Fifteenth - century BC fresco from a tomb of a dignitary Thebes.
- img 42 Representations of trees from Nimrud, A major Assyrian city between approximately 1250 BC and 610 BC. The ruins of the city were found half a mile from modern-day Assyrian village of Noomanea in Nineveh Province, Iraq
- img 43 Shah Goli, Tabriz an unusaula garden consisting of a pavillion (A) in the middle of an artificial lake, connected by causeway to a series of terraces (B) planted with fir trees
- img 44 Florence, Boboli Gardens. Grotto, 1583-1593
- img 45 Miniature from the late seventeenth-century Shahnameh manuscript. The background shows a chahar-bagh with cypress-lined alleyway.
- img 46 Miniature from the late seventeenth-century Shahnameh manuscript. The background shows a chahar-bagh with cypress-lined alleyway.
- img 47 Miniature from the late seventeenth-century Shahnameh manuscript. The background shows a chahar-bagh with cypress-lined alleyway.





INTRODUCTION

This thesis is comprised of a series of paintings that study historical representations of styles, forms and symbols found in gardens. It is less a research project into the history, meaning, and rules of these different gardens throughout time and more of an appreciation, appropriation and reinvention in fantastical form. There is no attempt in these paintings to represent objects or things that exist in the physical world, but instead a desire to create a new fantasy world. The image of 'garden as paradise' has been part of our human mythos for a very long time. The image of 'garden of eden' appears in the old testament of the Bible. There was a similar early image of 'garden as paradise' in Zoroastrian beliefs in ancient 'Persia'.

The paintings will reference an array of dates, places and perspectives. The reference section is a guide to the variety of source materials. Some references are merely compositional and stylistic and some are direct. Specific plants will be copies of the ones I saw in a book about ancient egypt. The image of pink camel is directly from the one I saw at the MET: Cloister Museum and Gardens in NYC which I visited this fall. Some references are more stylistic as in the tilted up flat perspective.



Img. 01-
Oriental Poppy 20" x 24", Acrylic on Canvas, 2016





Img. 02-
Untitled 20" x 24", Acrylic on Canvas, 2016

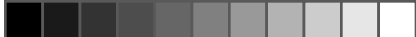




Img.03-

"You can learn a lot of things from the flowers", 42"X 55", Acrylic on Canvas, 2016





Img.04

Dinosaur Garden 61"X 55", Acrylic on Canvas, 2016





Img. 5-
CEye Balla Fenceheeto Portal 20" x 24", Acrylic on Canvas, 2016





Img. 6-
Eyeball Fence ,20" x 24", Acrylic on Canvas, 2016





Img. 7-
Untitled 20" x 24", Acrylic on Canvas, 2016





Img. 8-
24" x 36", Acrylic on Canvas, 2016





Img. 9-
Untitled 24" x 36", Acrylic on Canvas, 2016





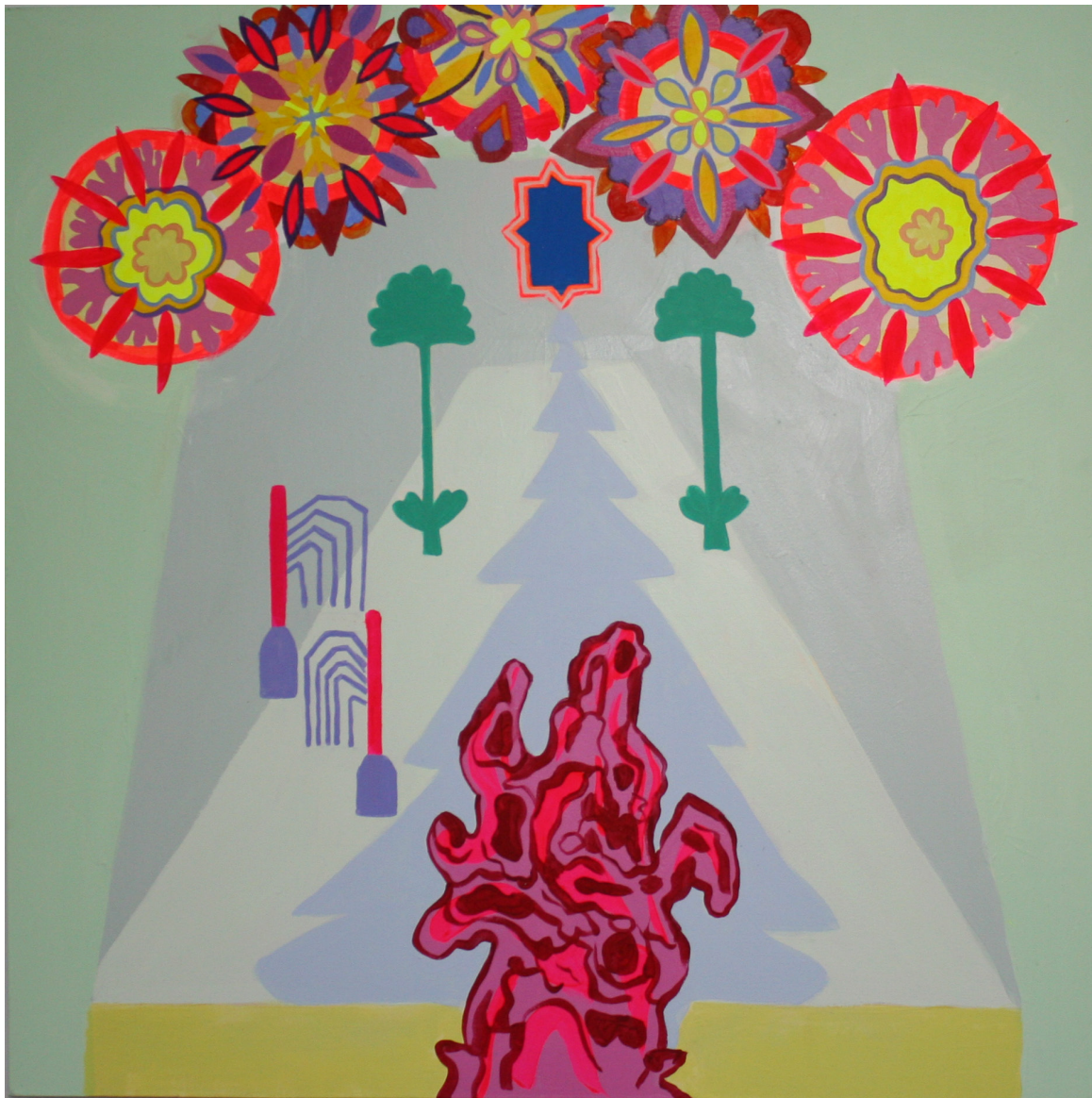
Img. 10-
Untitled , 24" x 36", Acrylic on Canvas, 2016





Img. 11-
Untitled, 36" x 36", Acrylic on Canvas, 2016





Img. 12-
36" x 36", Acrylic on Canvas, 2016





Img. 13-
36" x 36", Acrylic on Canvas, 2016





Img. 14-
24" x 36", Acrylic on Canvas, 2016

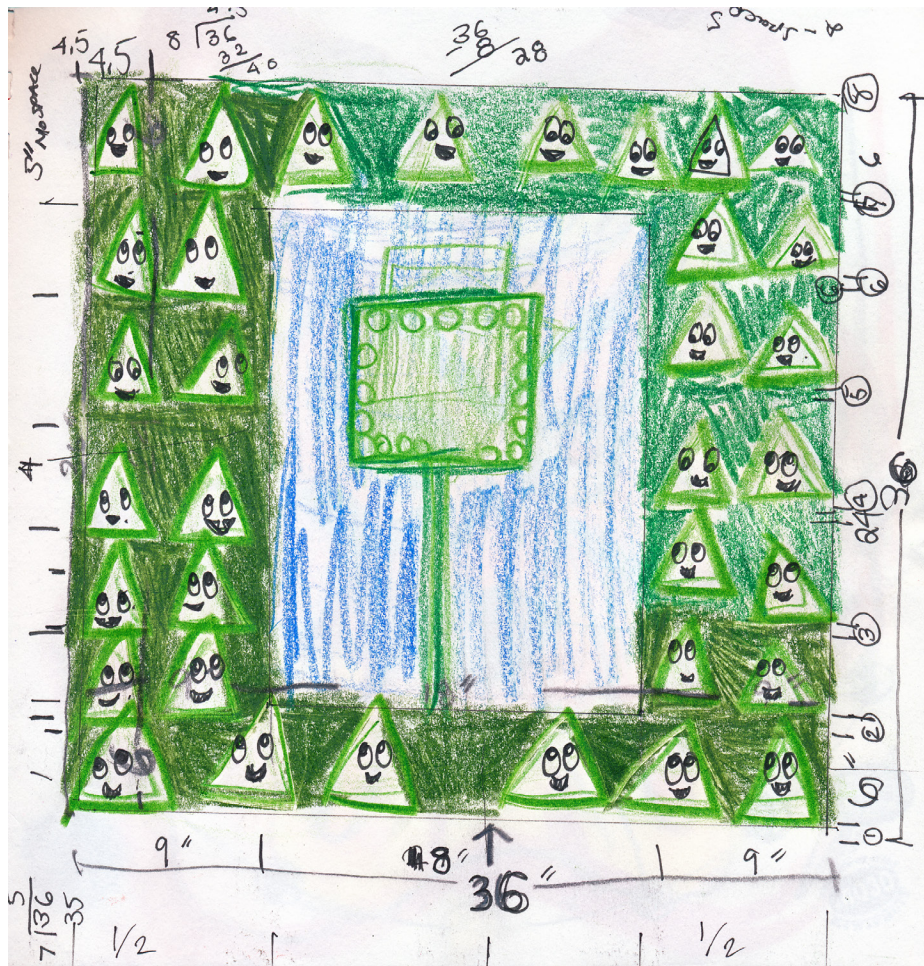






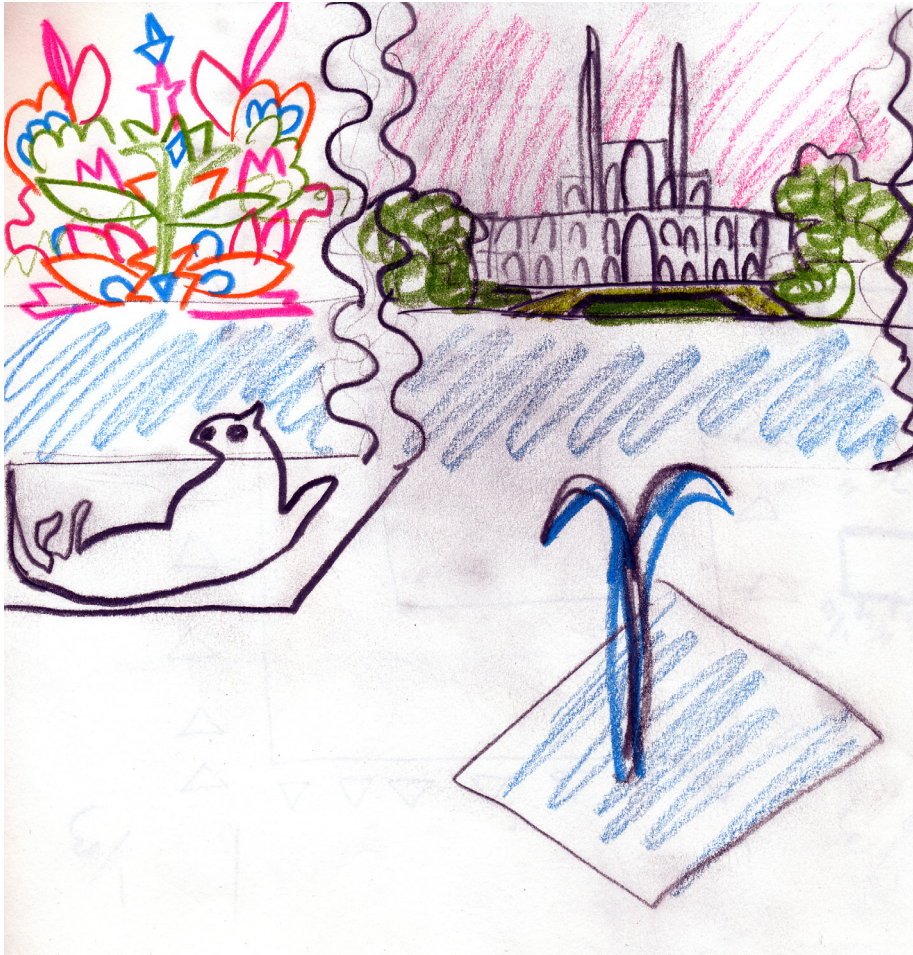
Sketches





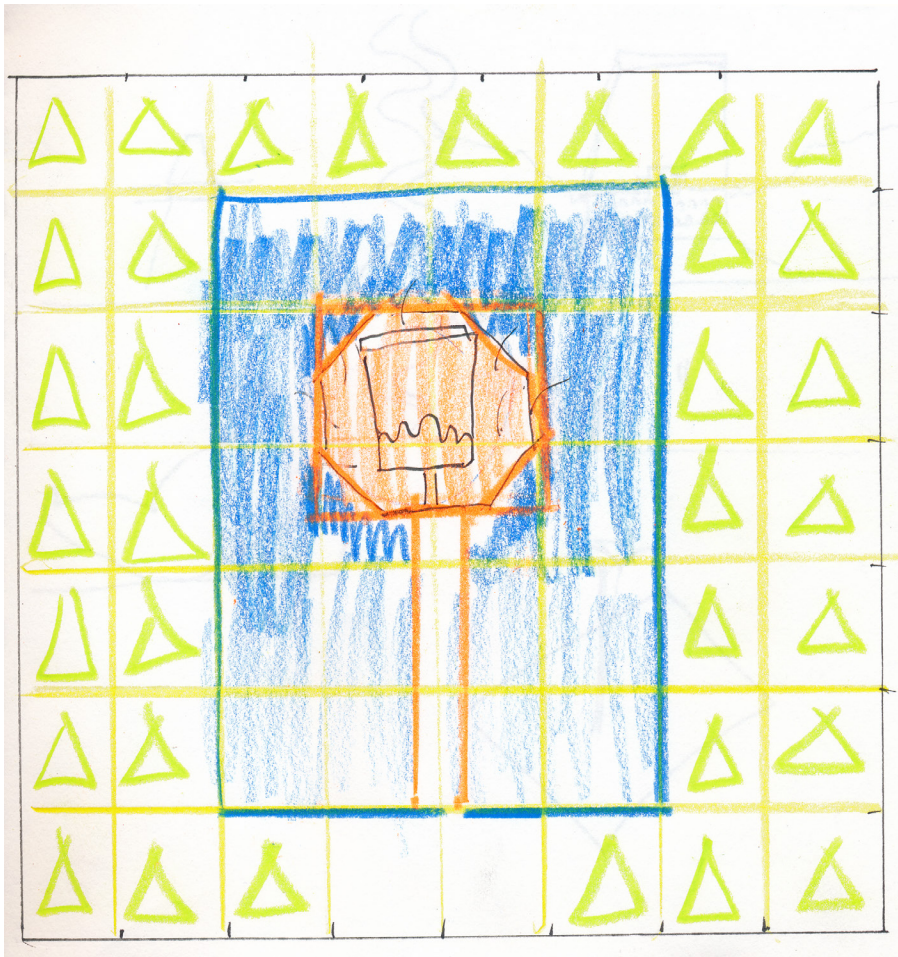
Img. 15





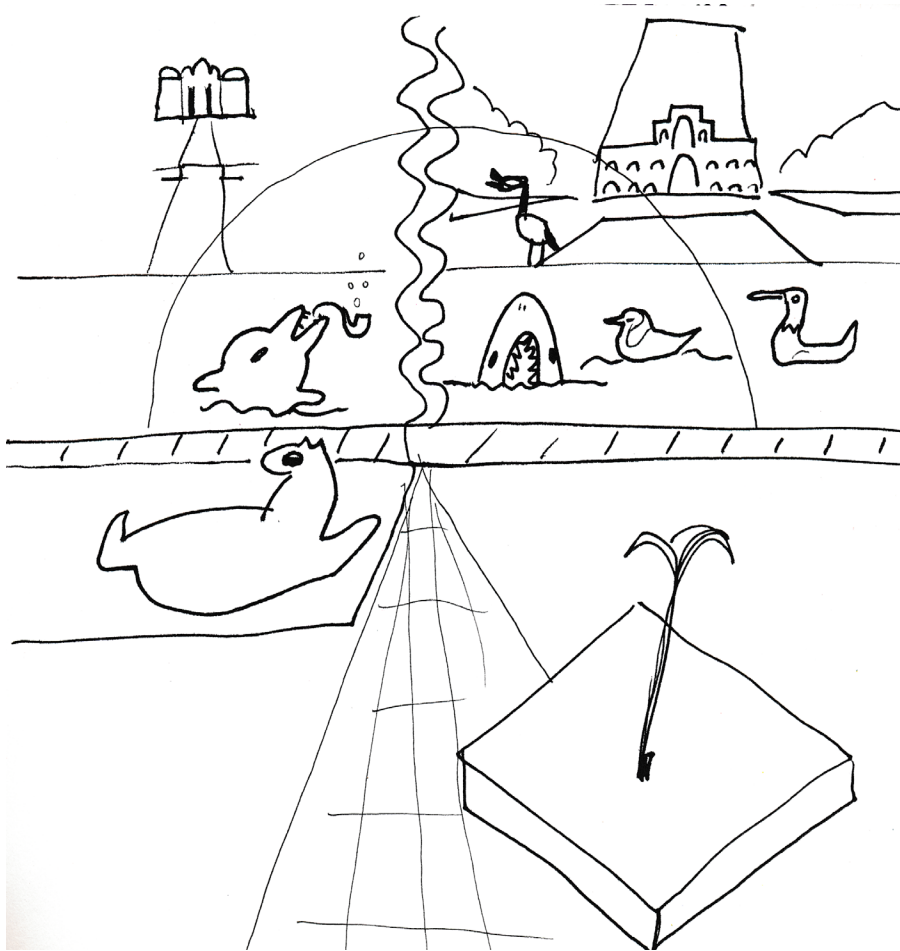
Img. 16





Img. 17 - sketch for painting





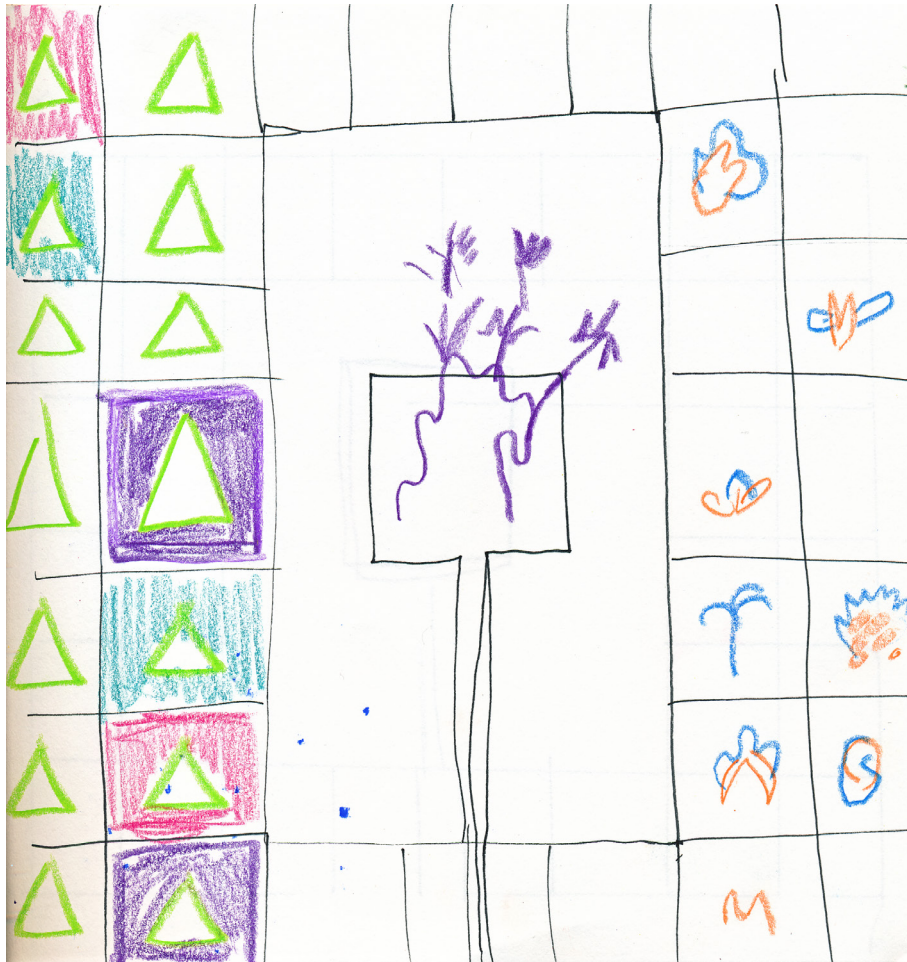
Img. 18 - sketch for painting





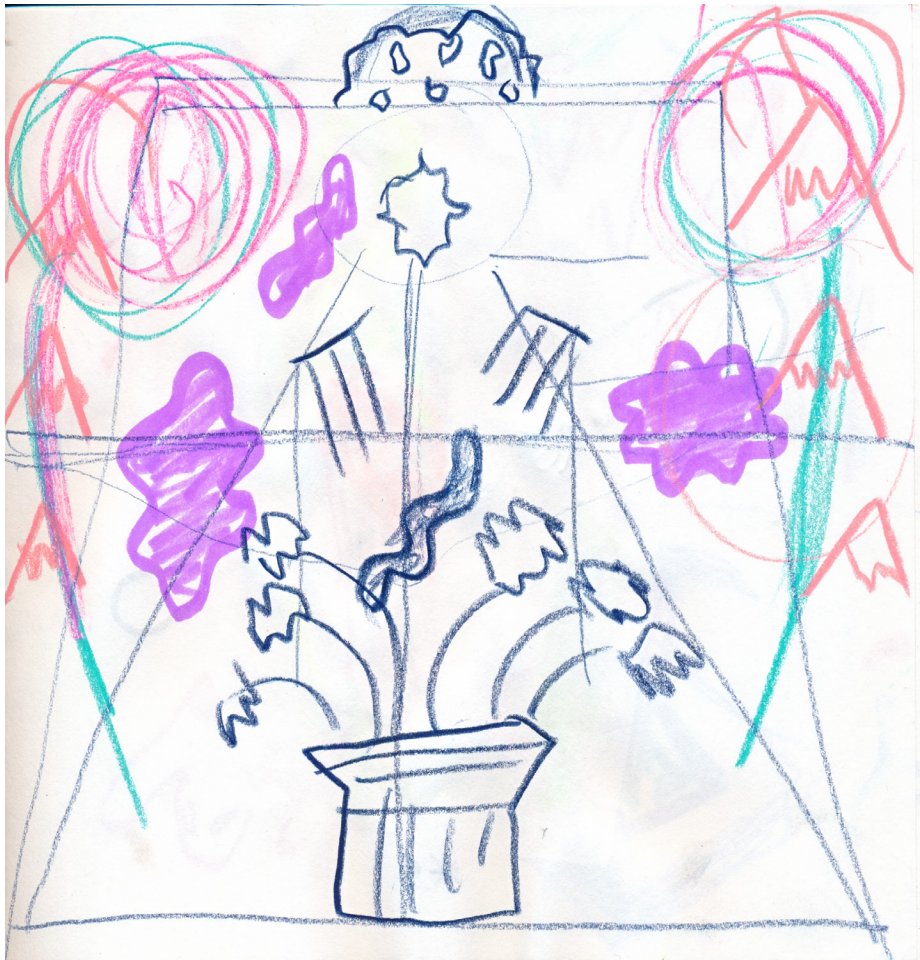
Img. 19 - sketch for painting





Img.20 - sketch for painting





Img.21 - sketch for painting





Img. 22- sketch for painting





Img.23 - sketch for painting





Img.24- sketch for painting





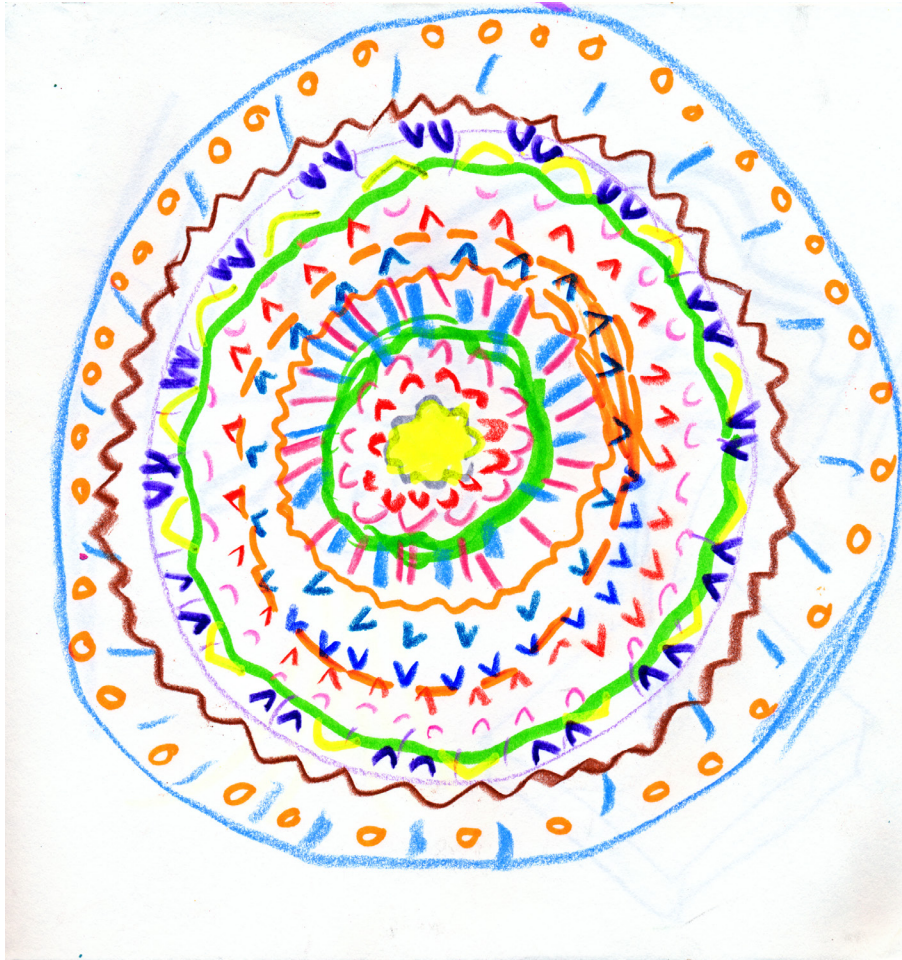
Img.-25 sketch for painting





Img.26- sketch for painting





Img.27- sketch for painting





Img.28 - sketch for painting





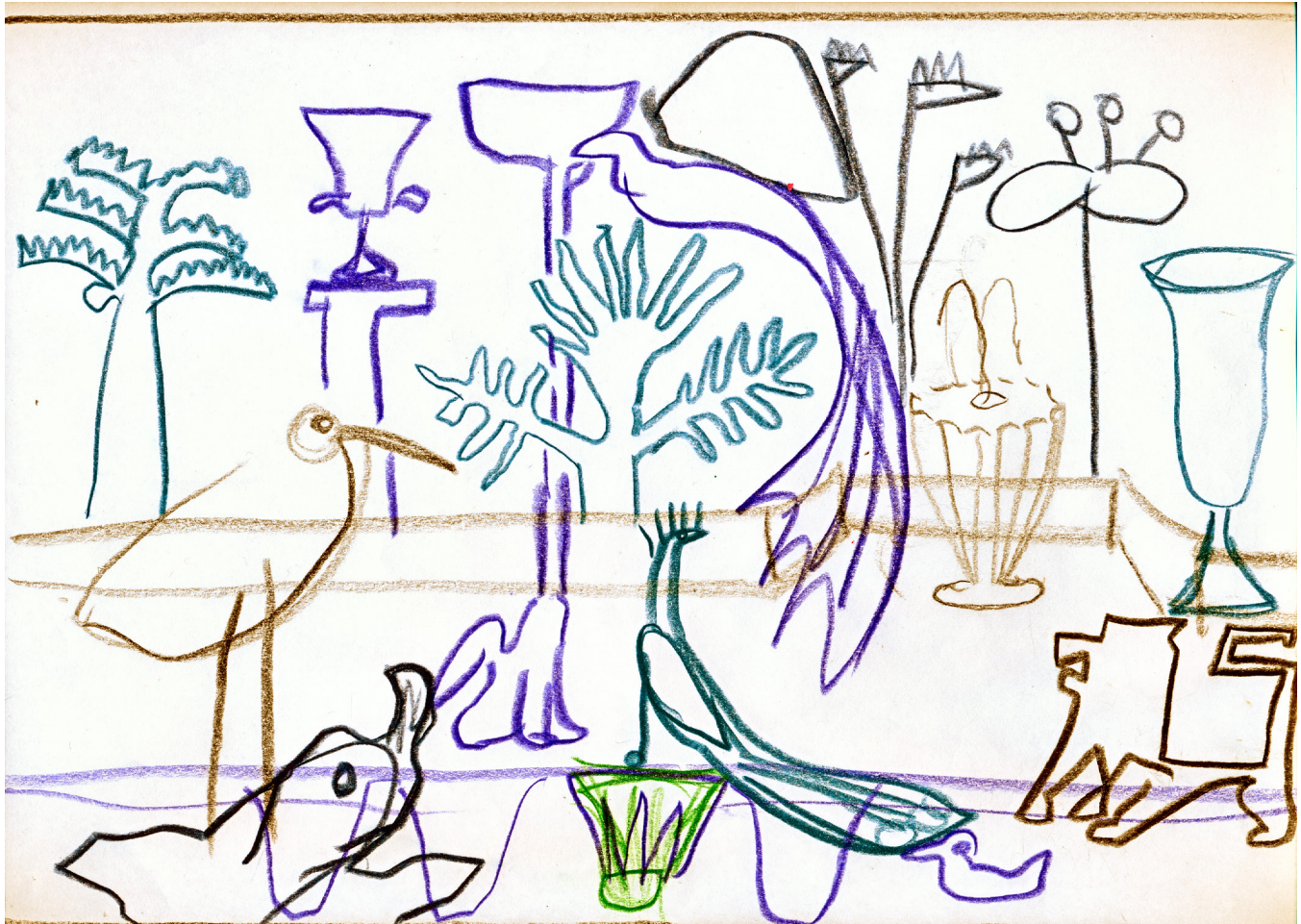
Img.29- sketch for painting





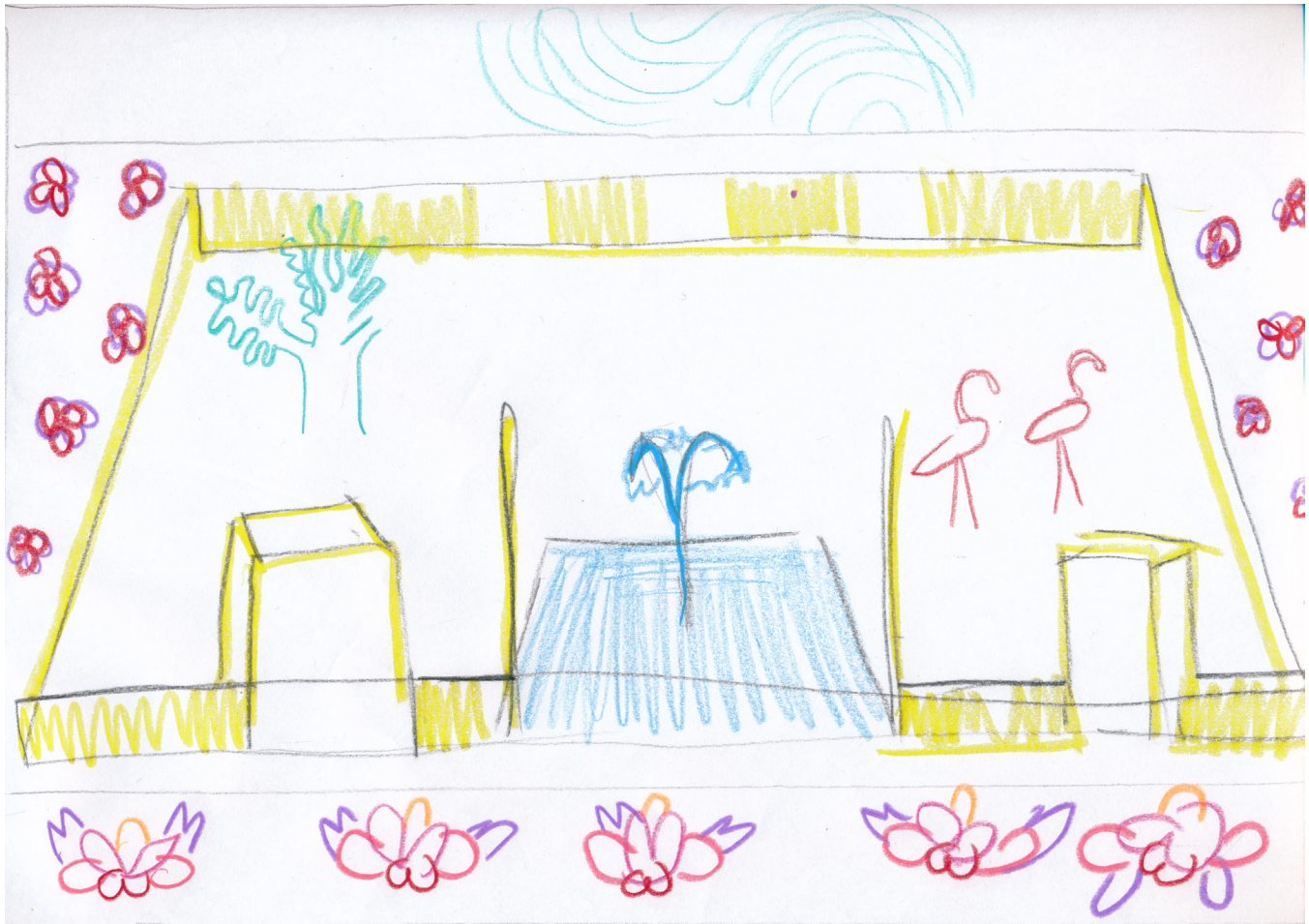
Img. 30 - sketch for painting





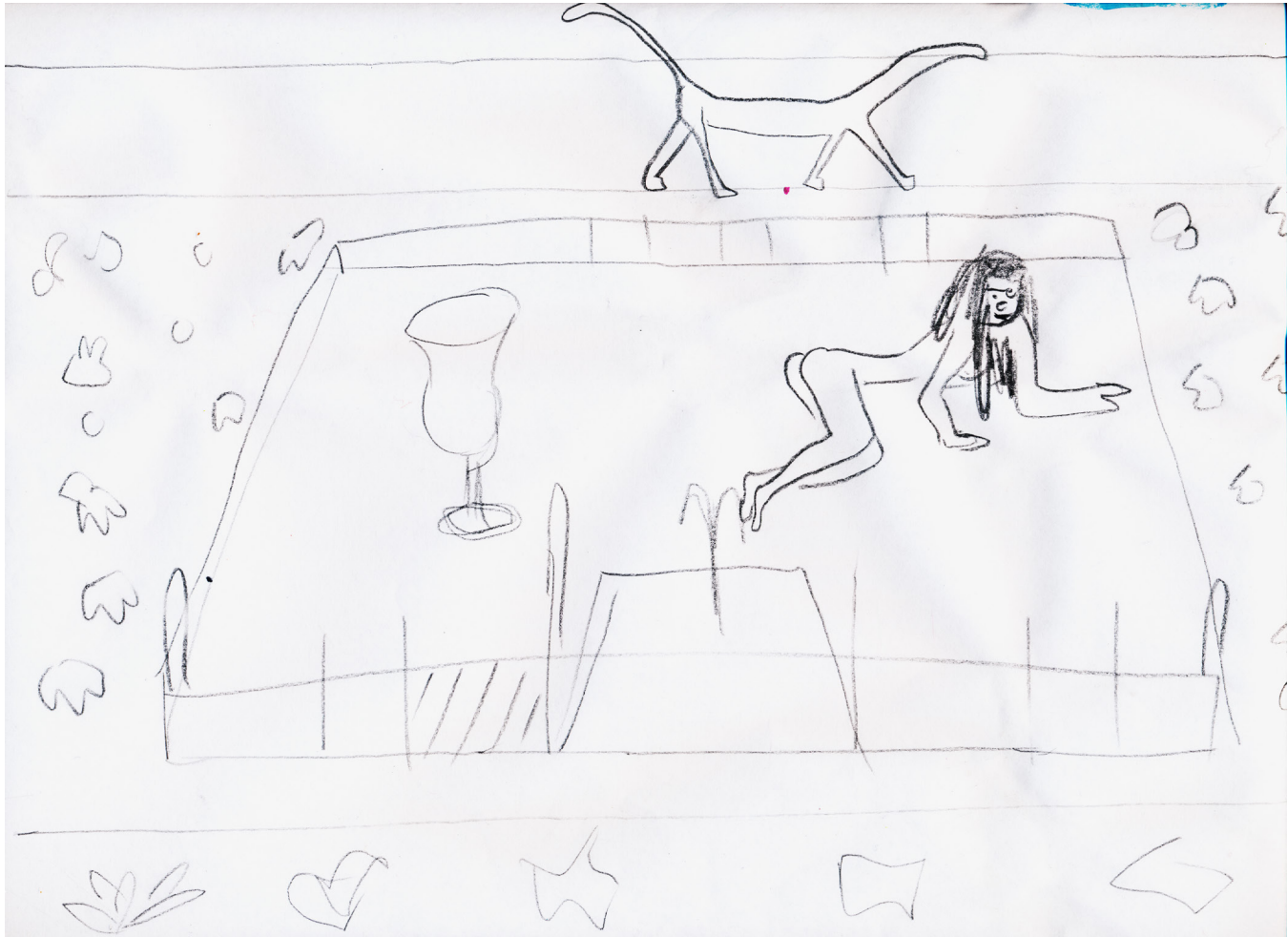
Img.31- sketch for painting





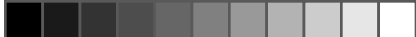
Img.32- sketch for painting





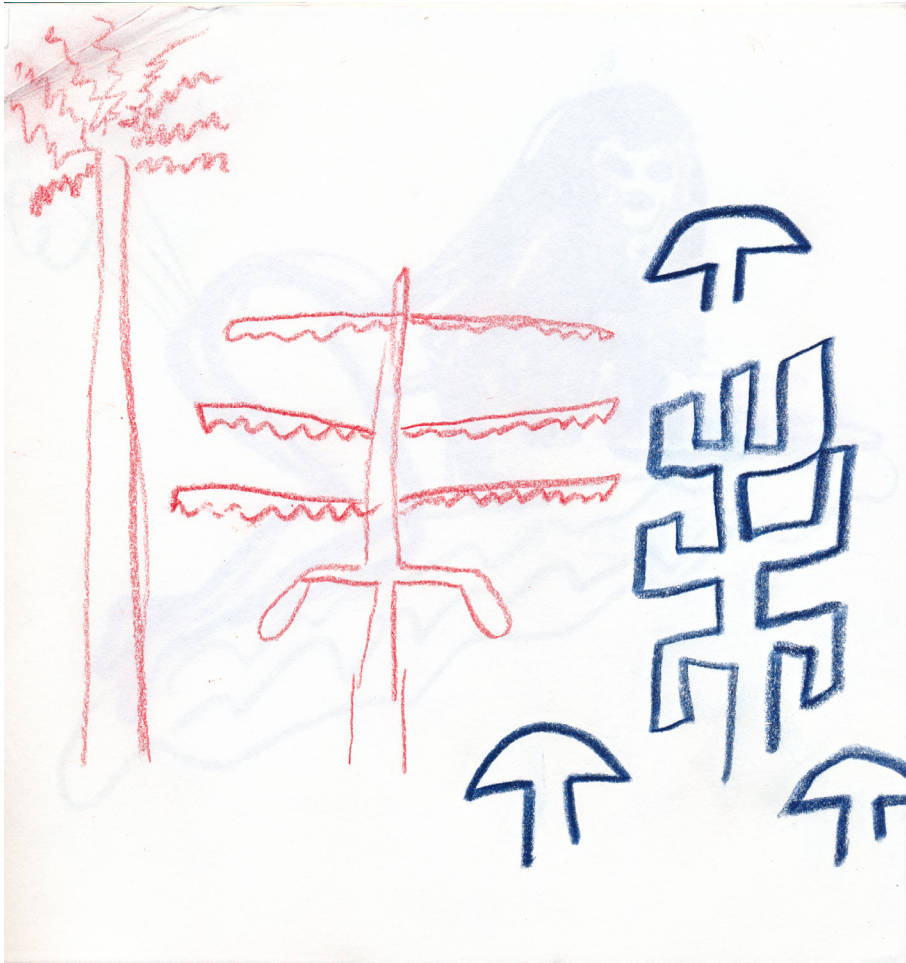
Img.33- sketch for painting





Img.34- sketch for painting





Img.35- sketch for painting





Img.36- sketch for painting

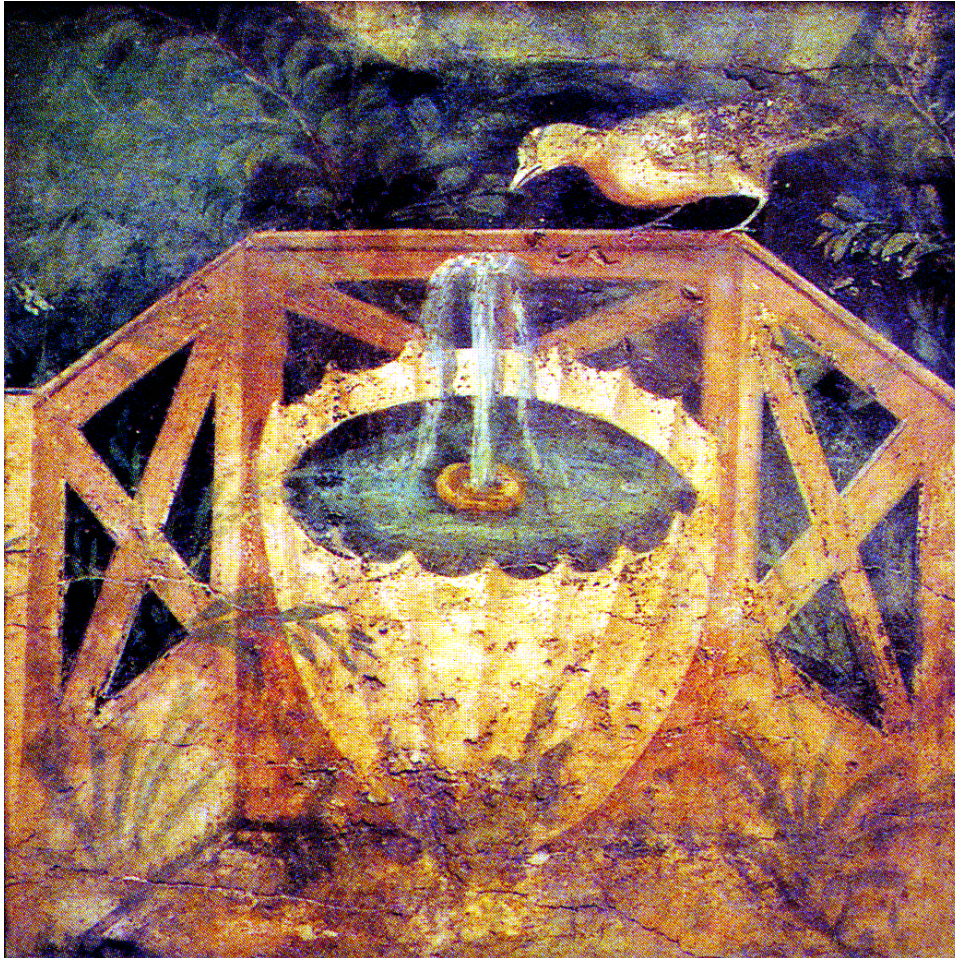






A selection of Source material





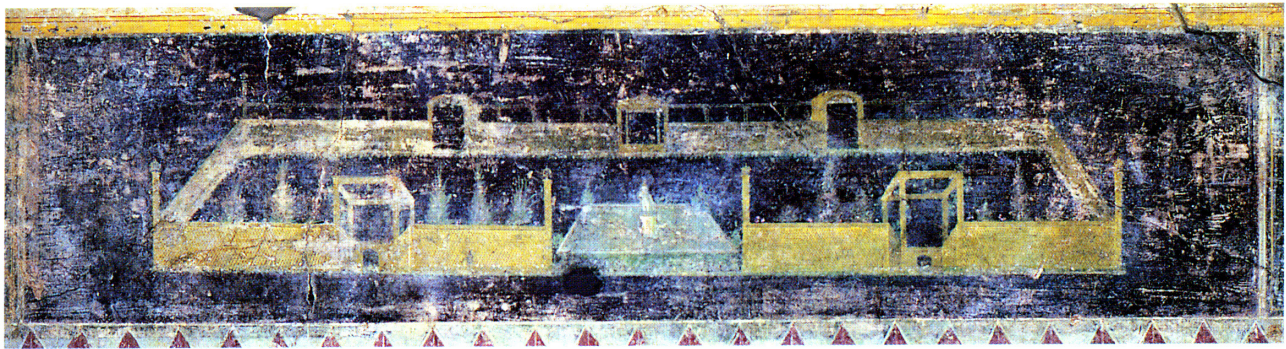
Img.37 -Fluted fountain. Garden Painting Detail. (now in Museo Nazionale, Naples)
Jashemski, Wilhelmina F., and Stanley A. Jashemski. 1979. *The Gardens of Pompeii: Herculaneum and the Villas Destroyed by Vesuvius*. New Rochelle, N.Y: Caratzas Bros.





Img. 38 -Conifer in recess. From Livia's garden room from Prima Porta the wife of Augustus(now in the museo Nazionale delle Terme, Rome). Jashemski, Wilhelmina F., and Stanley A. Jashemski. 1979. *The Gardens of Pompeii: Herculaneum and the Villas Destroyed by Vesuvius*. New Rochelle, N.Y: Caratzas Bros.





Img. 39-Garden Representation. Pompeii

Jashemski, Wilhelmina F., and Stanley A. Jashemski. 1979. *The Gardens of Pompeii: Herculaneum and the Villas Destroyed by Vesuvius*. New Rochelle, N.Y: Caratzas Bros.





Img. 40-Hell Mouth, 1552-1585, Bomarzo, Italy

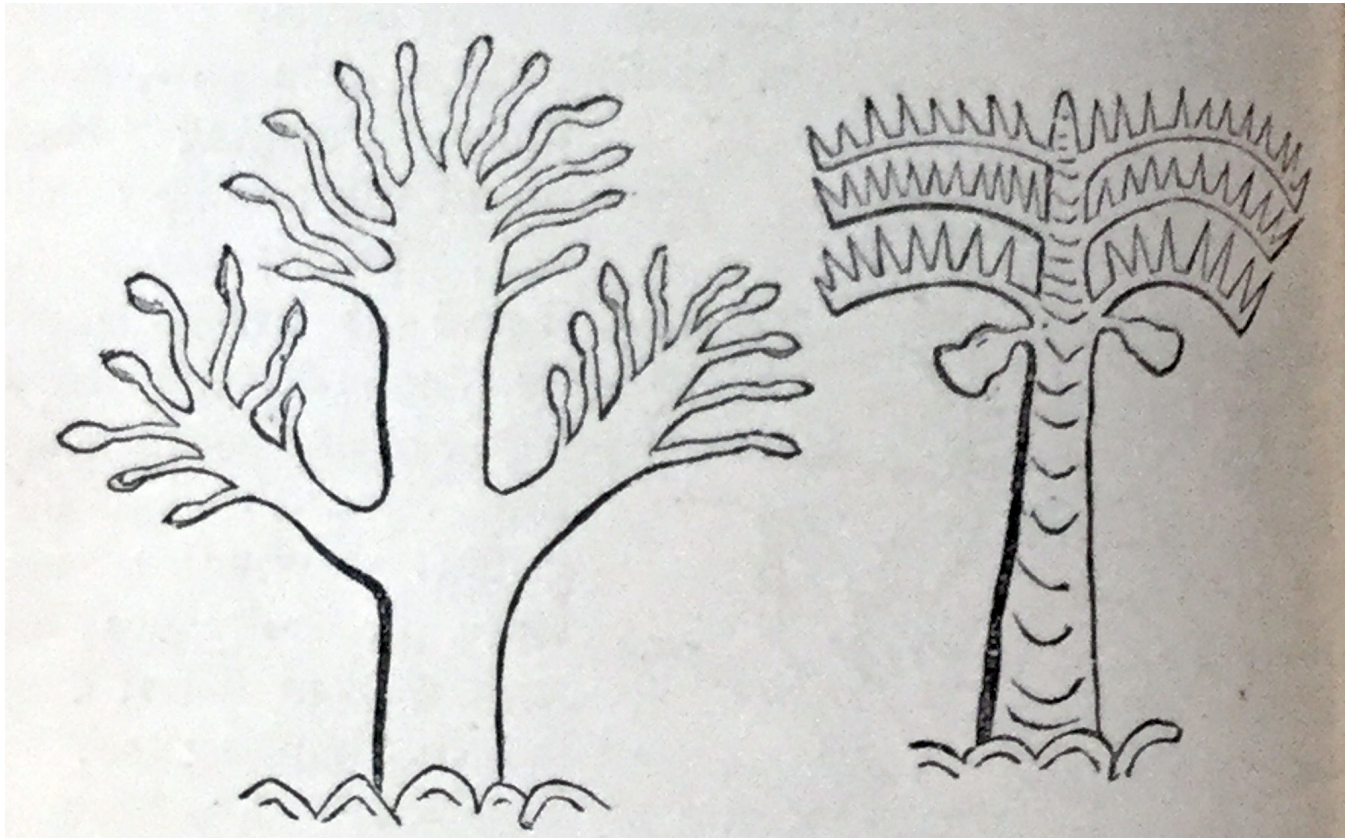
Morgan, Luke, and Project Muse. 2016. *The Monster in the Garden Reframing Renaissance Landscape Design*. Philadelphia: University of Pennsylvania Press.
<https://muse.jhu.edu/books/9780812291872/>.





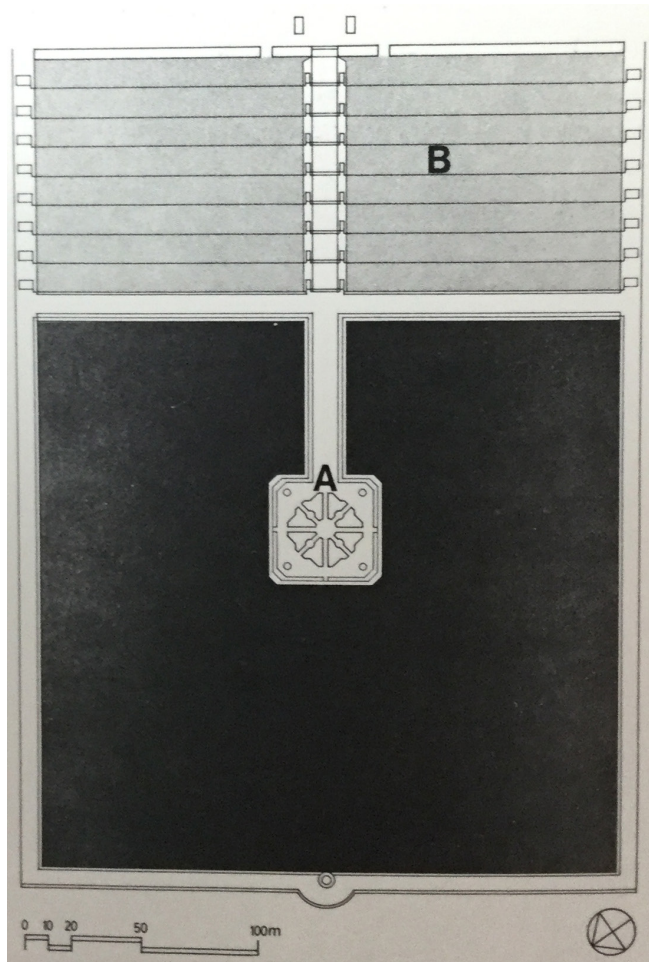
Img. 41-Fifteenth - century BC fresco from a tomb of a dignitary Thebes.
Khansari, Mehdi. 1998. *The Persian Garden : Echoes of Paradise*. Washington, DC : Washington, DC :





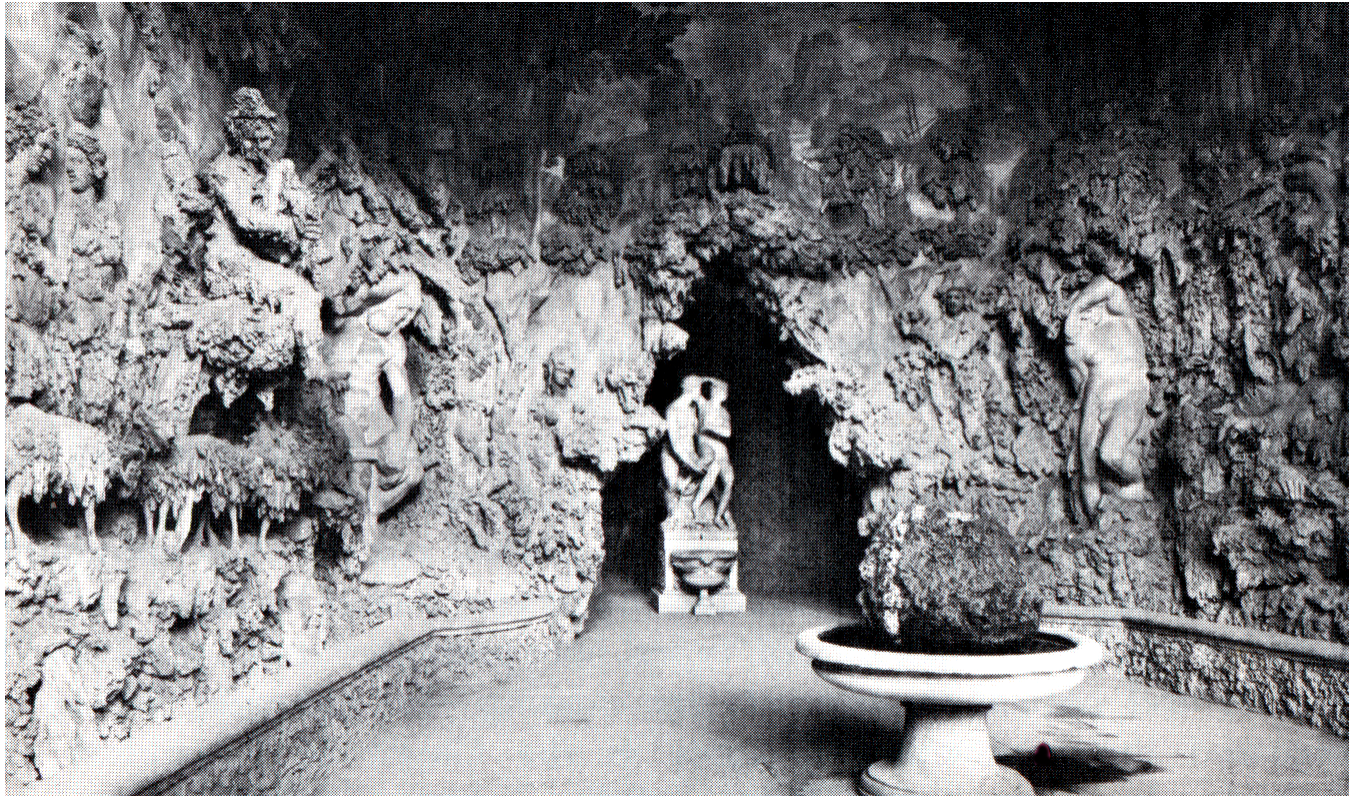
Img. 42 Representations of trees from Nimrud, A major Assyrian city between approximately 1250 BC and 610 BC. The ruins of the city were found half a mile from modern-day Assyrian village of Noomanea in Nineveh Province, Iraq
Rawlinson, George. 190AD. *The Five Great Monarchies of the Ancient Eastern World; Or, The History, Geography, and Antiquities of Chaldaea, Assyria, Babylon, Media, and Persia.* New York: Dodd, Mead.





Img. 43-- Shah Goli, Tabriz an unusaula garden consisting of a pavillion (A)in the middle of an artificial lake, connected by causeway to a series of terraces (B) planted with fir trees
Lehrman, Jonas Benzion. 1980. *Earthy Paradise: Garden and Courtyard in Islam*. Berkeley: University of California Press.





Img. 44-- Florence, Boboli Gardens. Grotto, 1583-1593

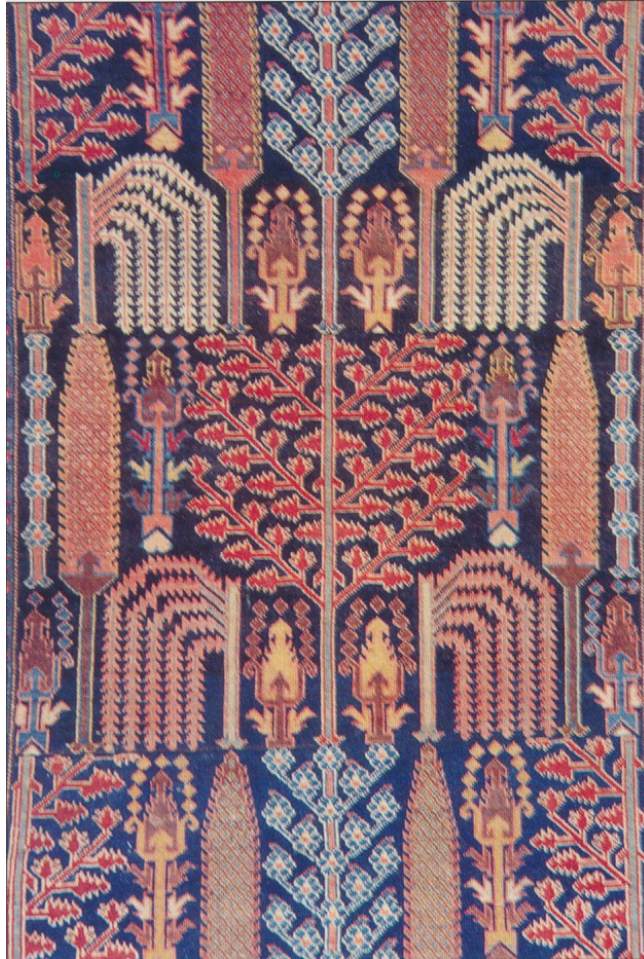
Miller, Naomi. 1982. *Heavenly Caves: Reflections on the Garden Grotto*. 1st ed. New York: G. Braziller.





Img. 45--Miniature from the late seventeenth-century Shahnameh manuscript. The background shows a chahar-bagh with cypress-lined alleyway. Khansari, Mehdi. 1998. *The Persian Garden : Echoes of Paradise*. Washington, DC : Washington, DC :





Img. 46-- A fragment from a nineteenth-century Persian garden carpet from the Malayer area.
Khansari, Mehdi. 1998. *The Persian Garden : Echoes of Paradise*. Washington, DC : Washington, DC :





Img.47 -- Seventeenth-century Persian carpet from Kerman in the Safavid period. Known as the Wagner Garden Carpet. Khansari, Mehdi. 1998. *The Persian Garden : Echoes of Paradise*. Washington, DC : Washington, DC :



