

LA MARGINAL:
a Coastal Promenade Park

Roxana de Jesús

Thesis submitted to the faculty of the
Virginia Polytechnic Institute and State University
in partial fulfillment of the requirements for the degree of

Master of Architecture in Architecture

Hans Rott, Committee Chair
Steve Thompson, RA
H. Scott Gartner

May 10, 2017 Blacksburg, VA

Keywords: coastal park, promenade, park, landscape

© 2017, Roxana de Jesús

LA MARGINAL:
a Coastal Promenade Park

Roxana de Jesús

ABSTRACT:

This thesis explores alternate typologies for a coastal promenade park in the town of Arecibo, Puerto Rico. The proposal acts as a link between the town, the park and the coastal edge. The coastal promenade park is created as a connector, defined mostly by the concrete walls that resemble the coastal edge. The concrete walls are used as connecting and defining elements of this entities.



"La Marginal", Coastal edge

ACKNOWLEDGEMENTS

To my mother, for your unconditional love and support.

To my committee, for your patience and encouragement to remain true to my ideas.

To God, for sending me angels throughout this journey.



Layers of Memory, Concrete wall

TABLE OF CONTENTS

THE SITE	1
THE WALL	12
“LA MARGINAL”	18
THE PROMENADE	24
THE PARK	36
THE COASTAL EDGE	48

THE SITE

The site converges with the force of the Atlantic Ocean.



“The ocean’s mist,
the sound of the waves crashing on the edge,
the salty smell of the ocean,
the sunsets that disappear on the horizon...”







Site aerial view





Coastal Edge panoramic view, North



Coastal Edge panoramic view, North



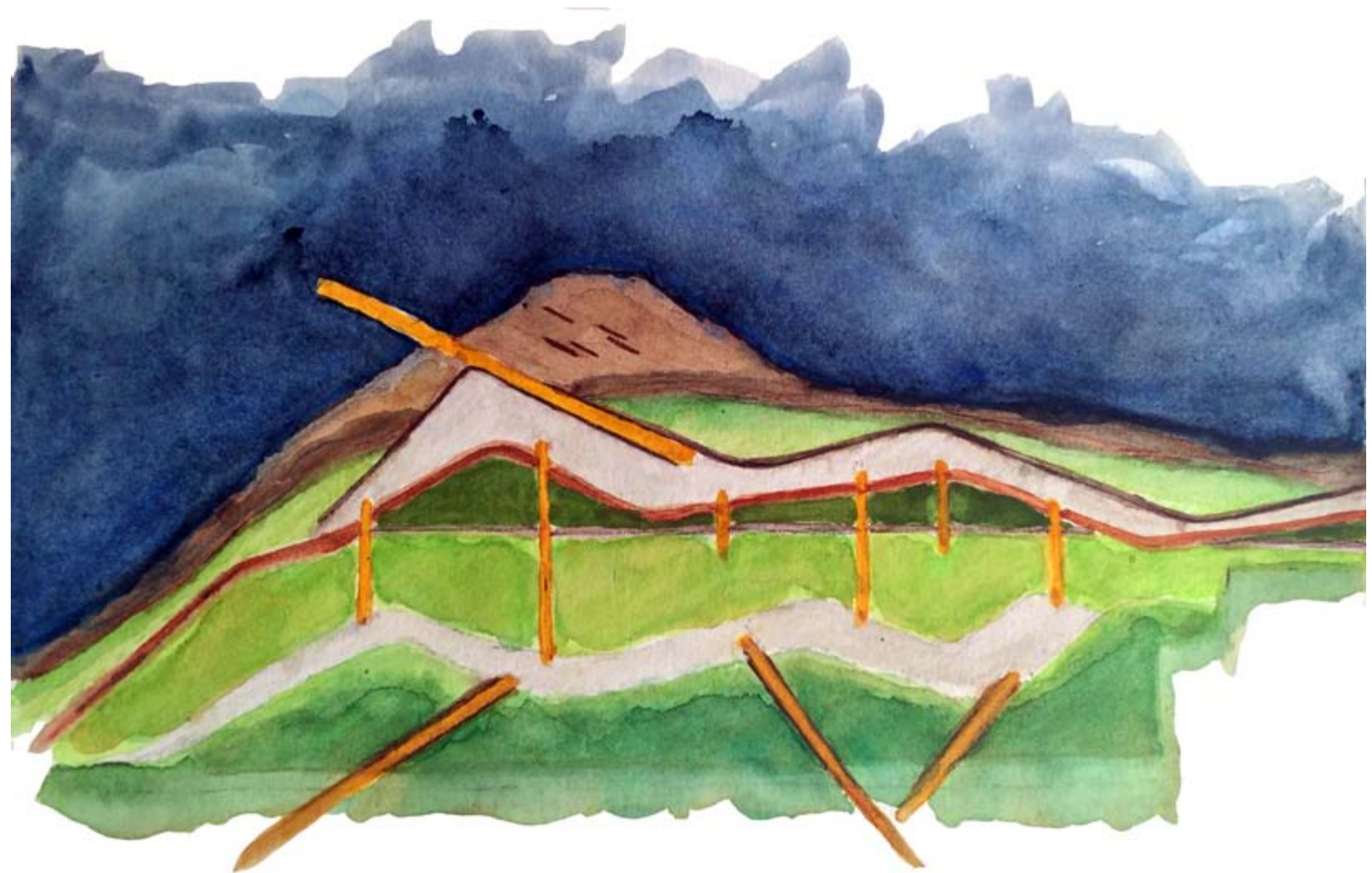
Coastal Edge panoramic view, North



Coastal Edge panoramic view, North East



Coastal Edge panoramic view to site, East





THE WALL

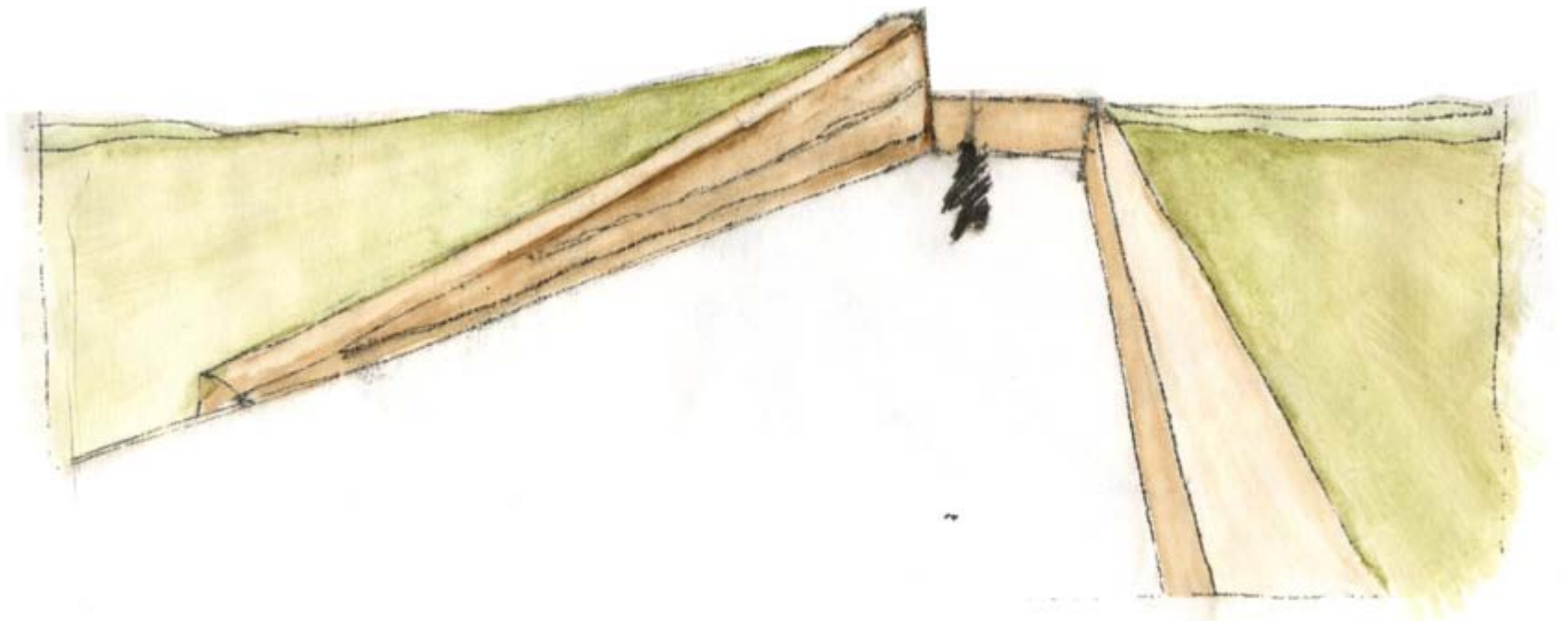
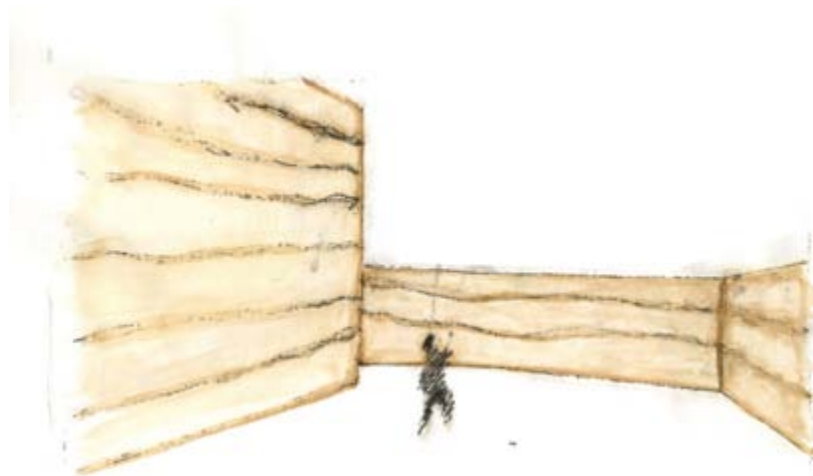
Layers of memory defined through the pass of time.

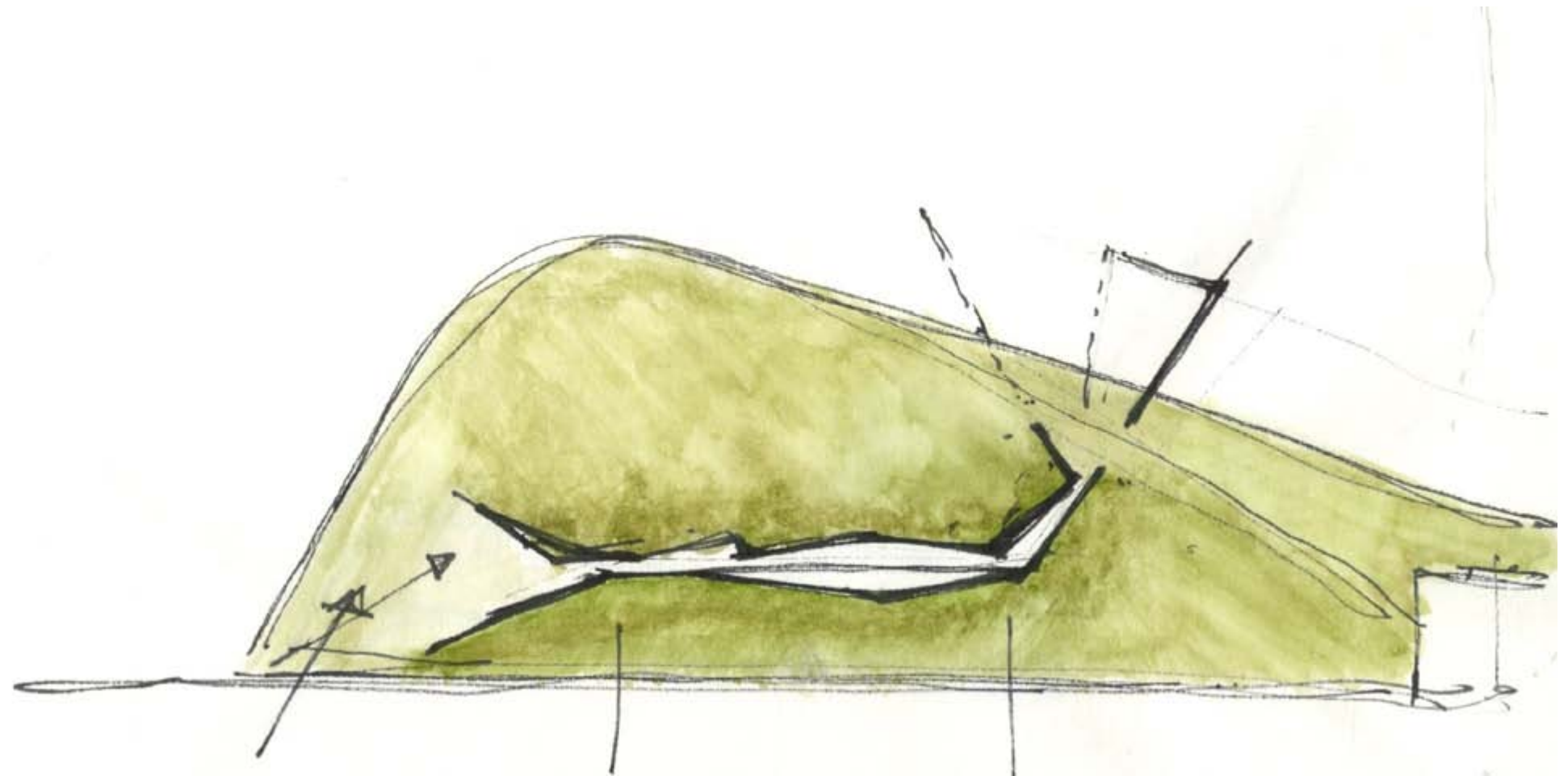




Concrete Wall model, removed from formwork {pre-wash}





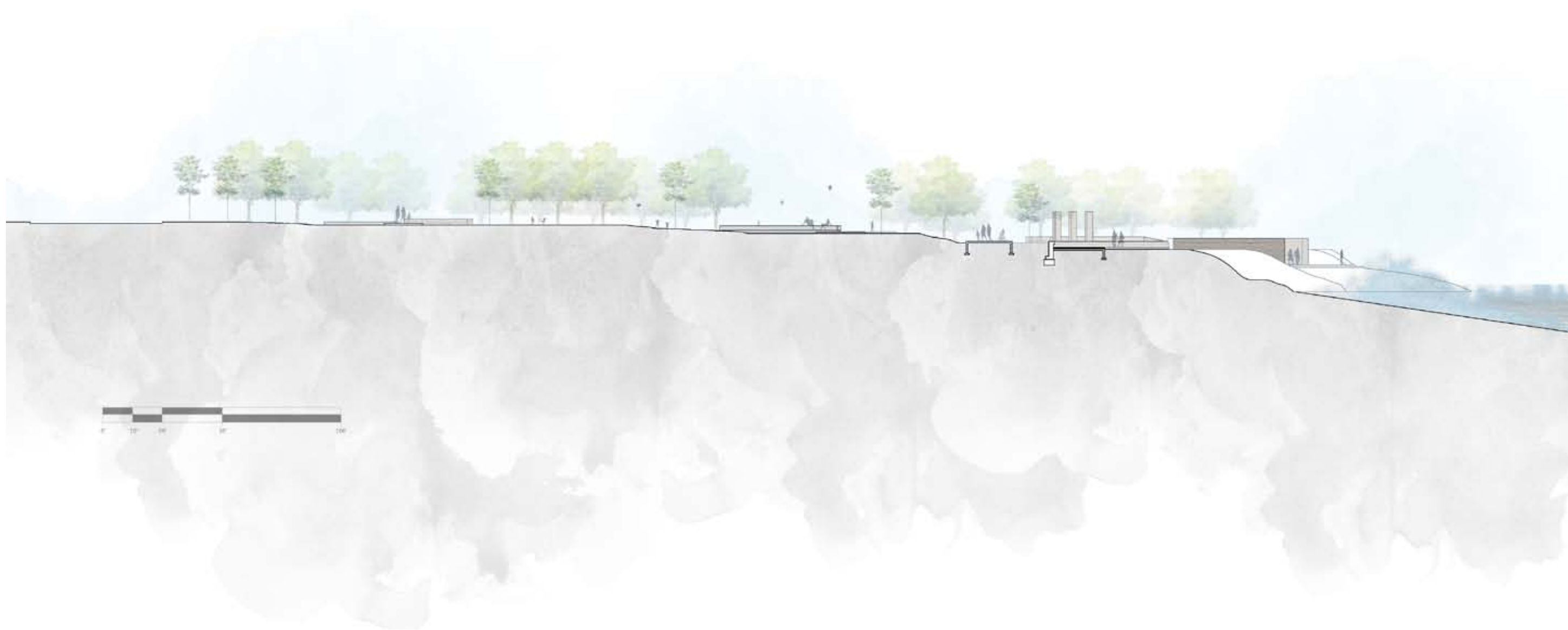


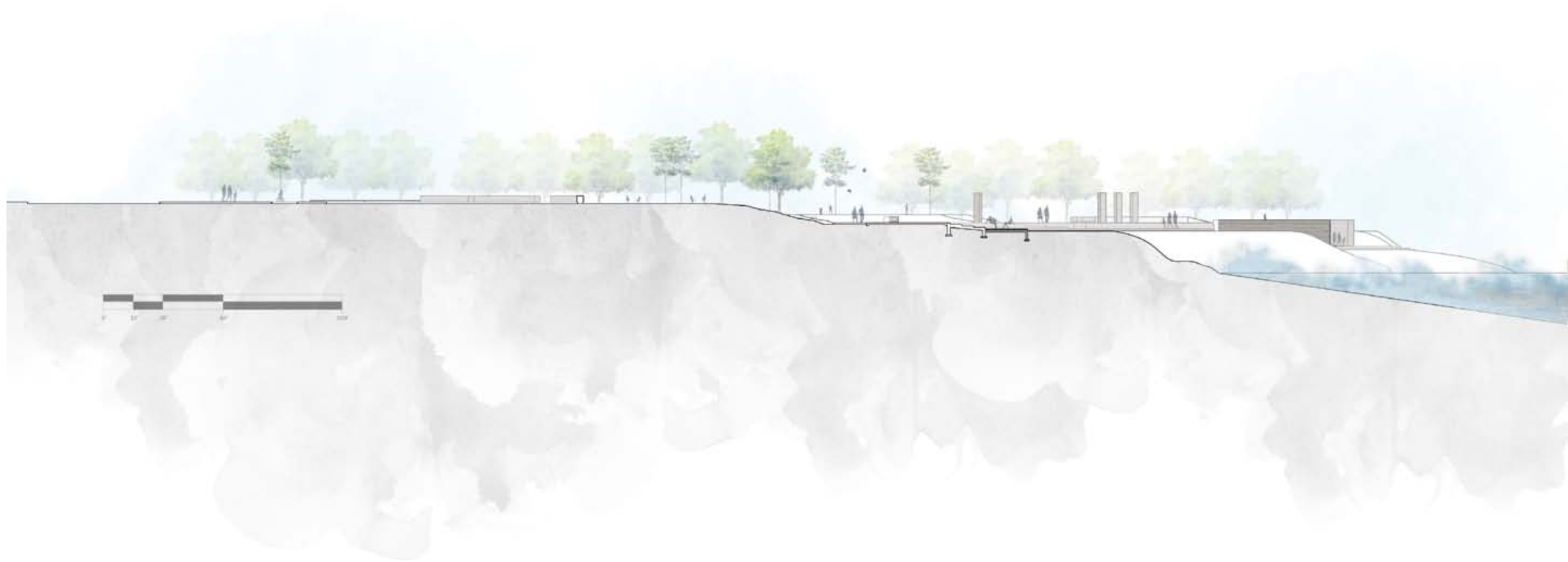
“LA MARGINAL”

“La Marginal”, a coastal promenade park defined by the integration of the town, the park, and the coastal edge.











THE PROMENADE

A pedestrian path that connects the park and the coastal edge.

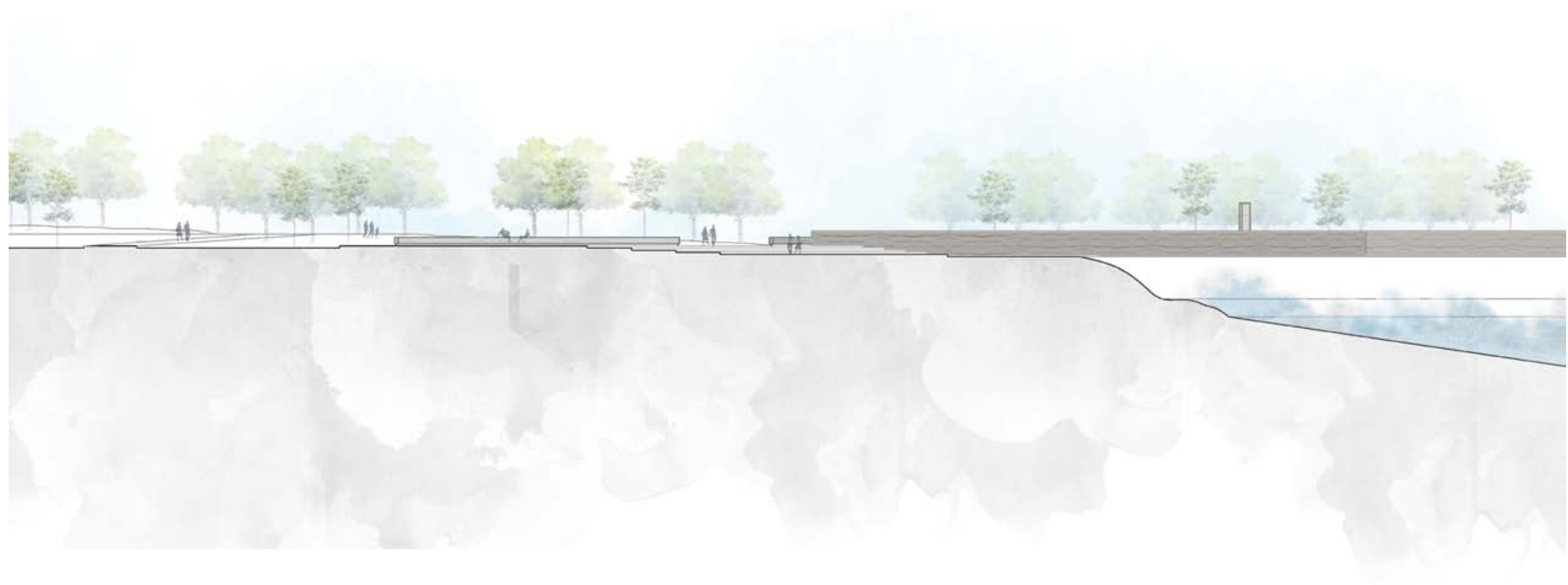




Promenade steps facing East and concrete benches, perspective

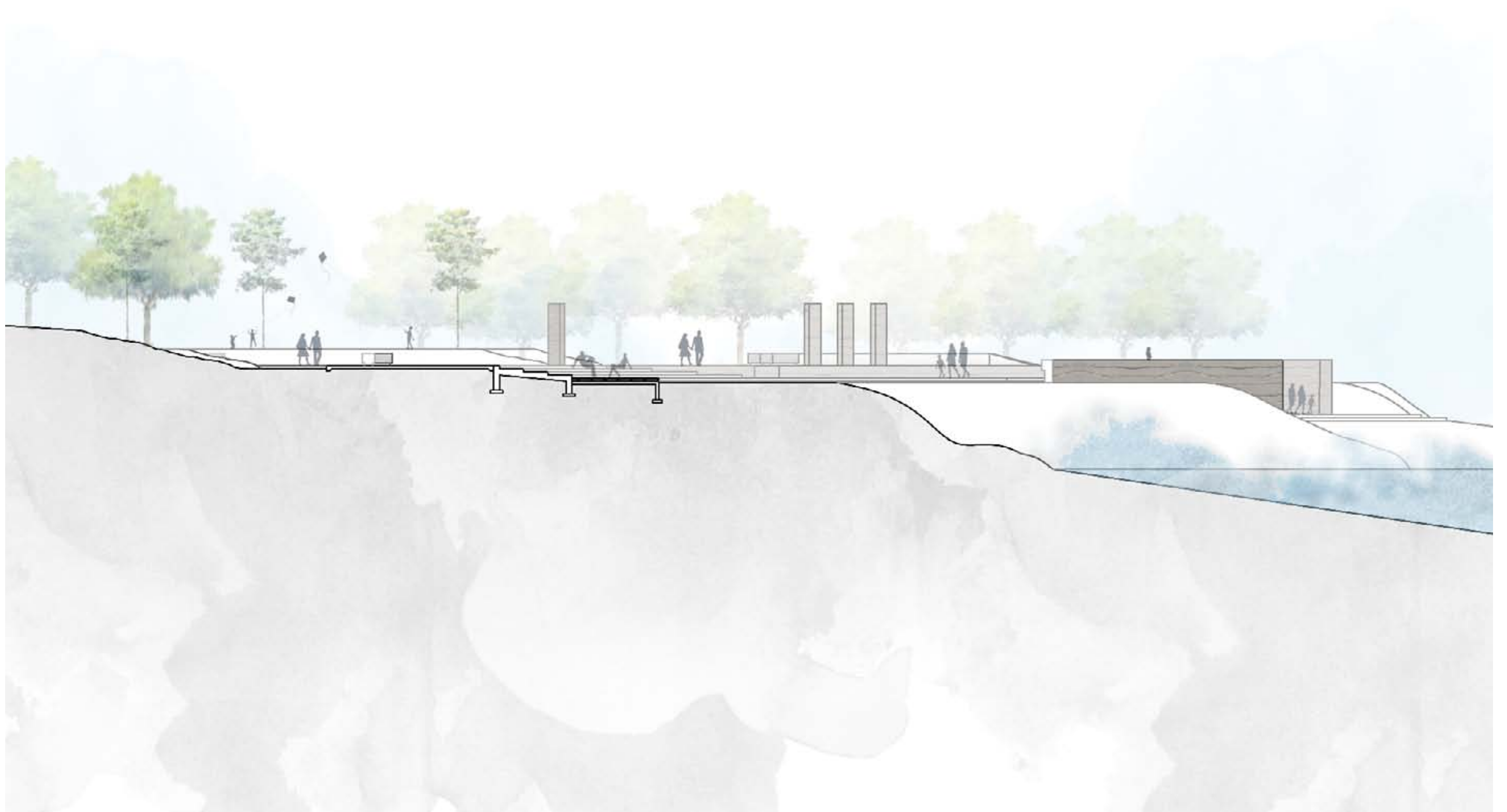


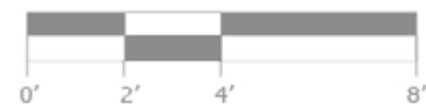
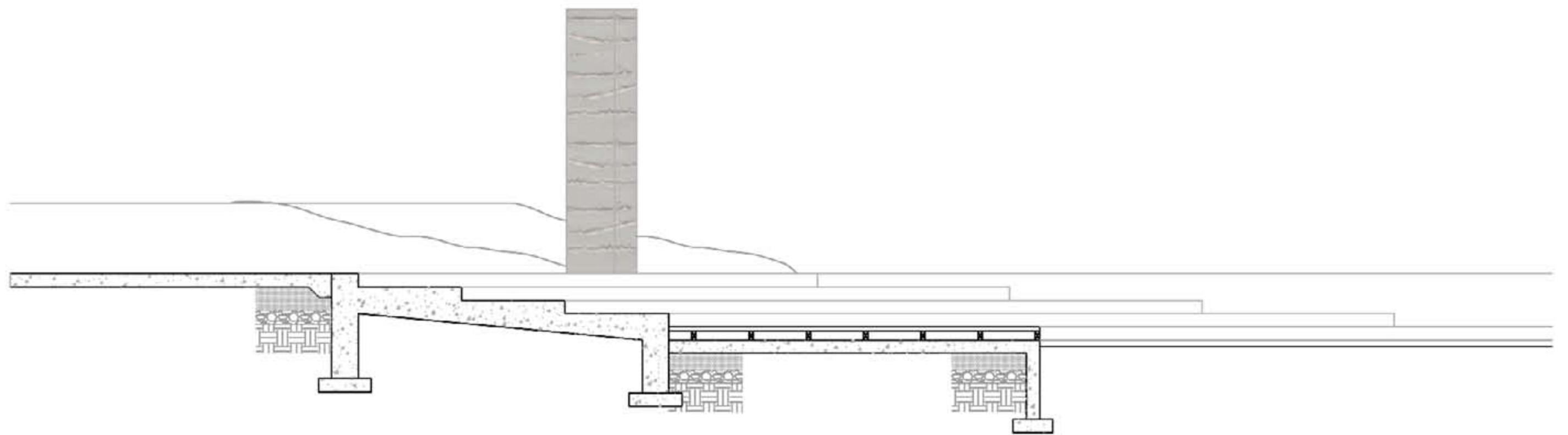
Promenade steps facing East.

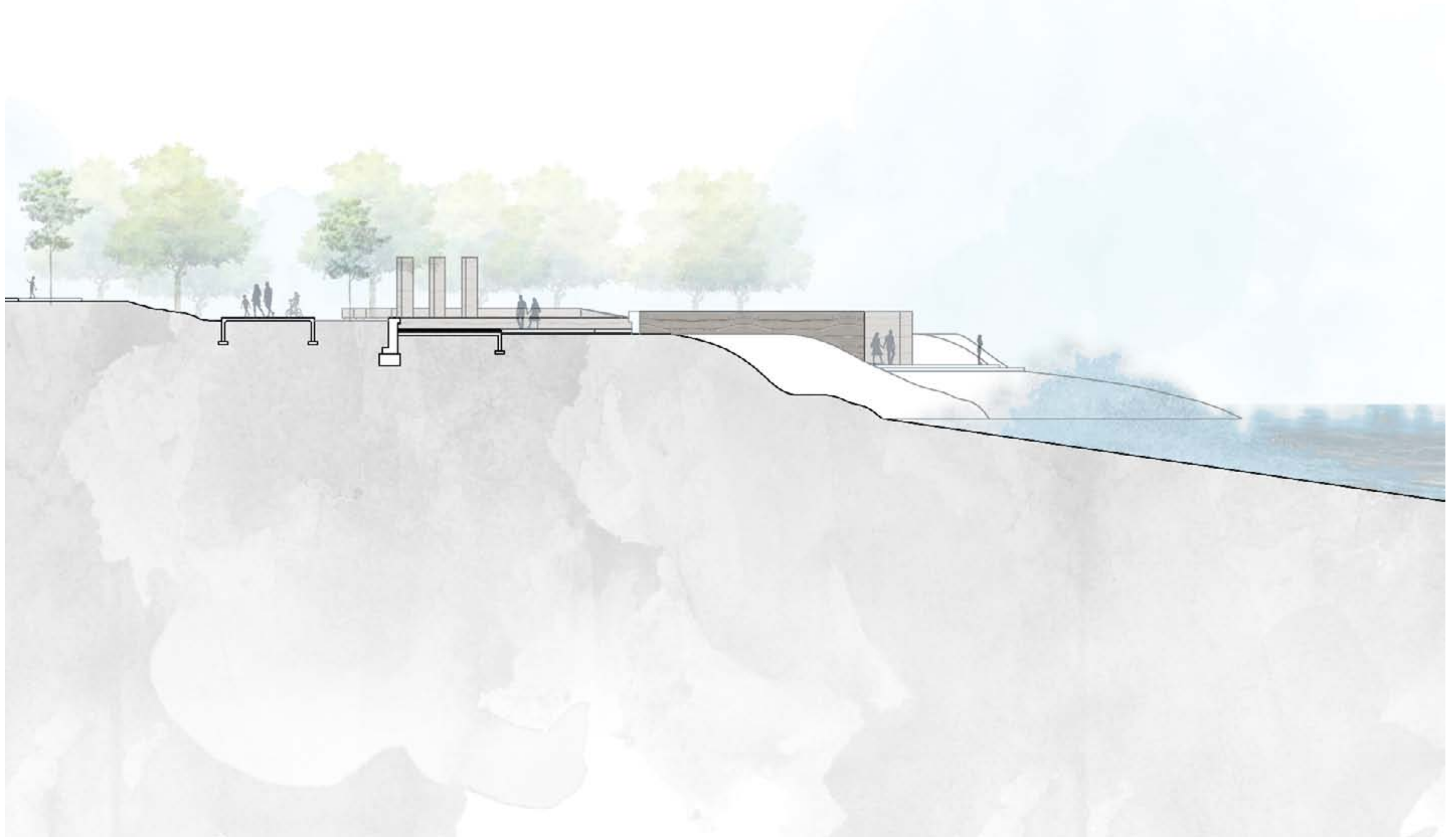


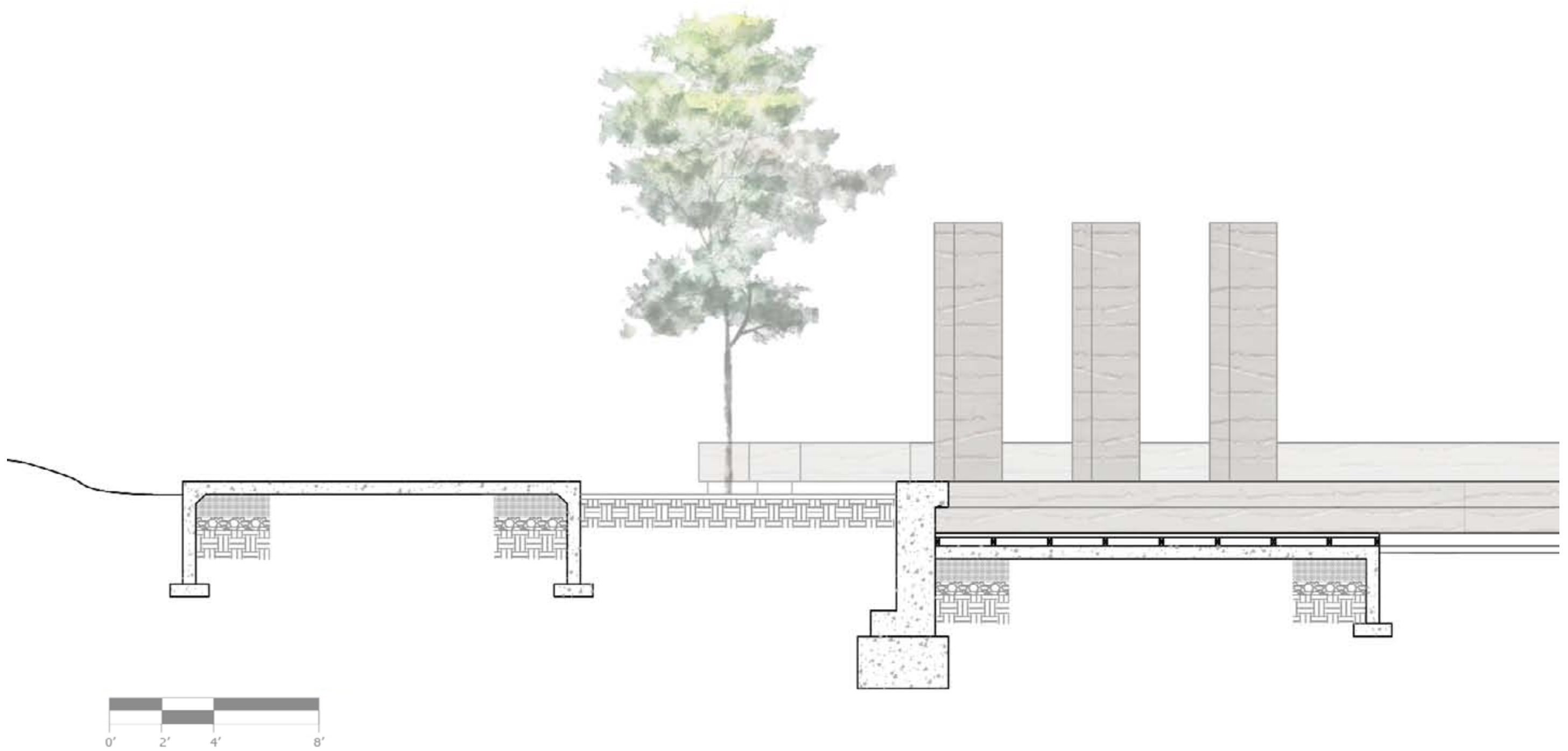


Promenade steps facing North and Park entrance from promenade.

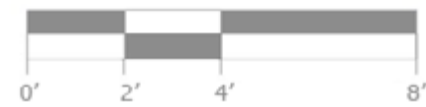
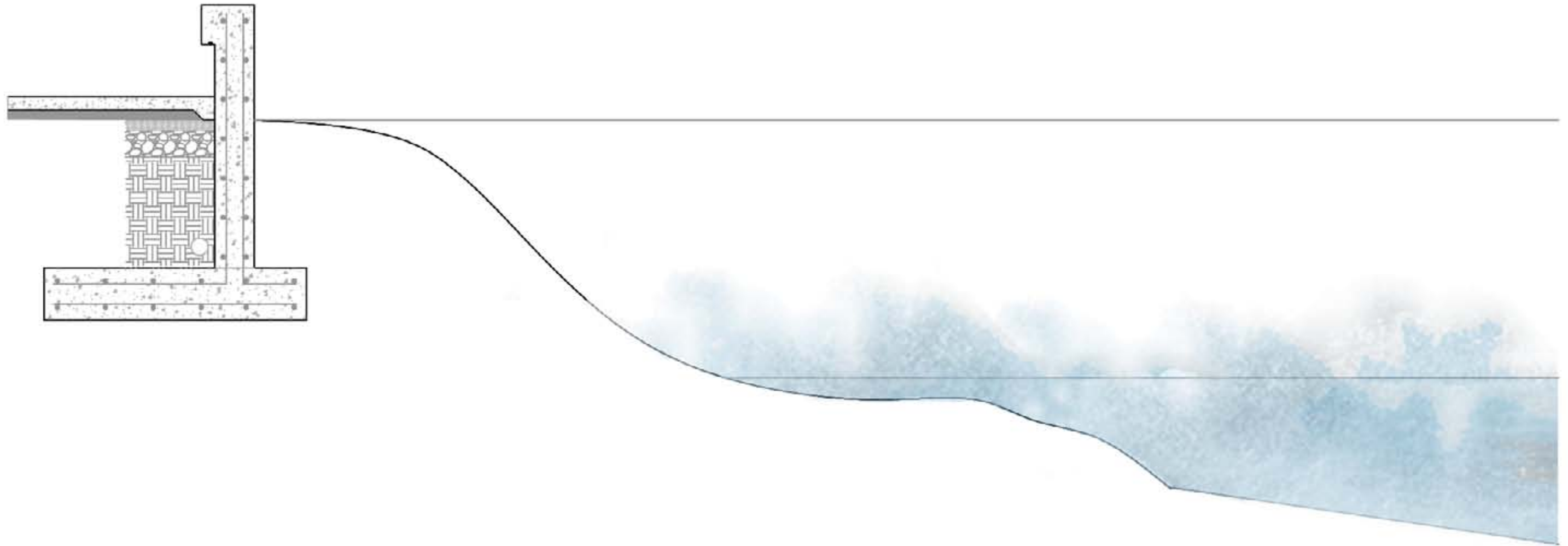








Upper and Lower Promenade detail section

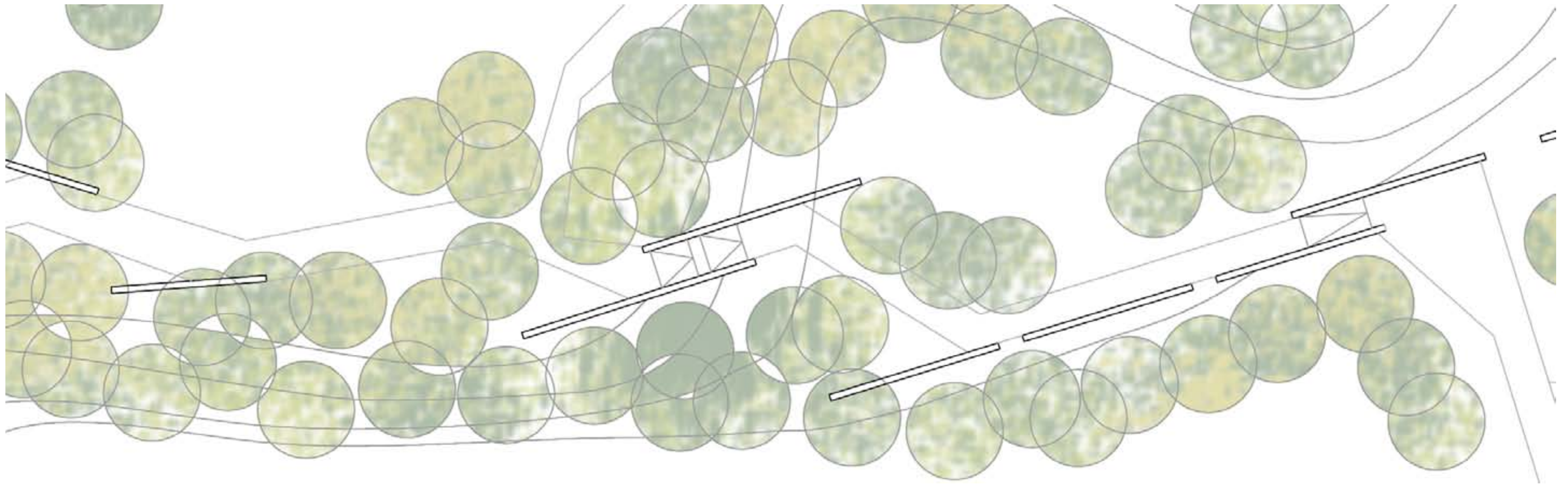


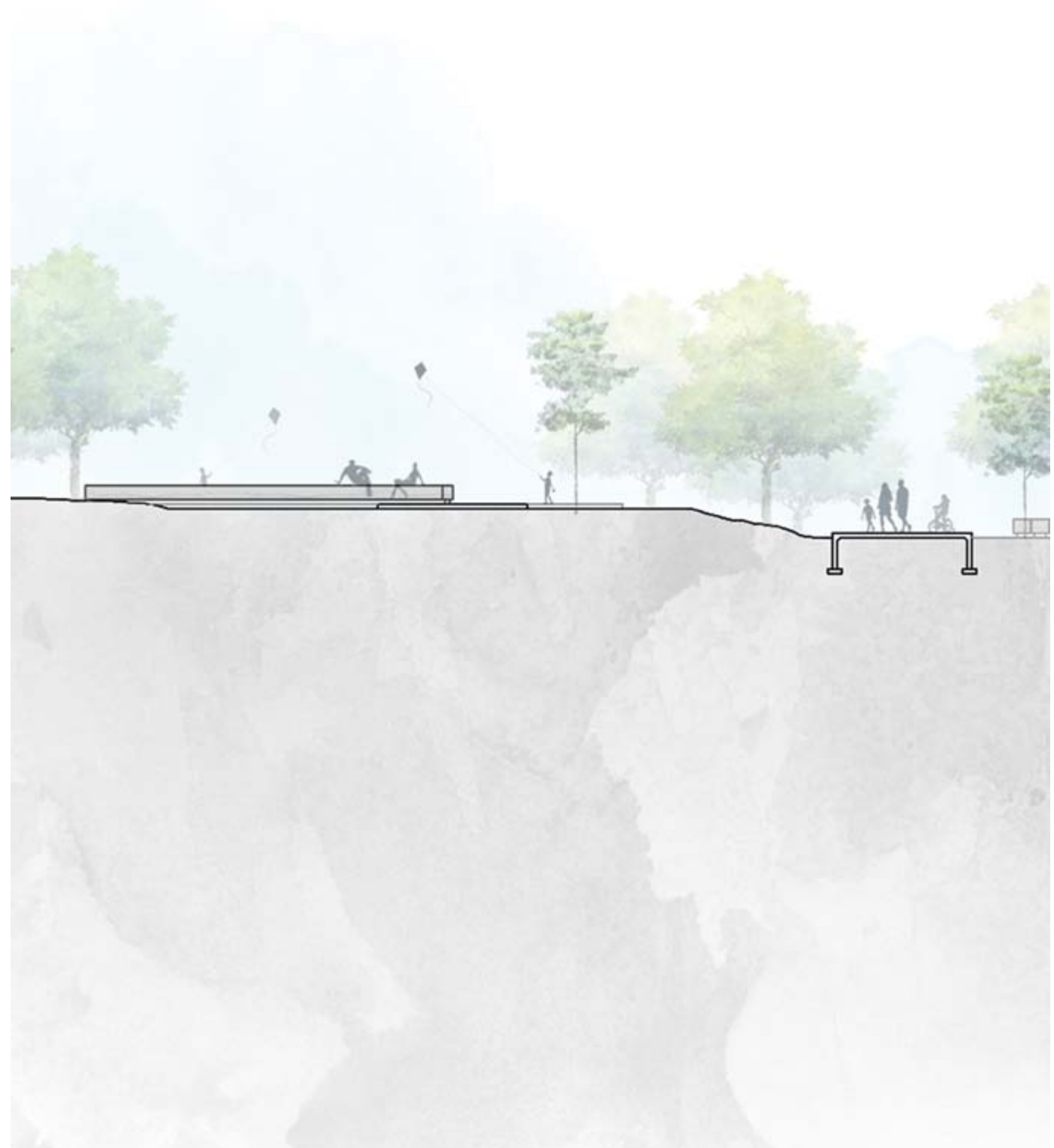


THE PARK

A natural link between the town and the coastal edge.



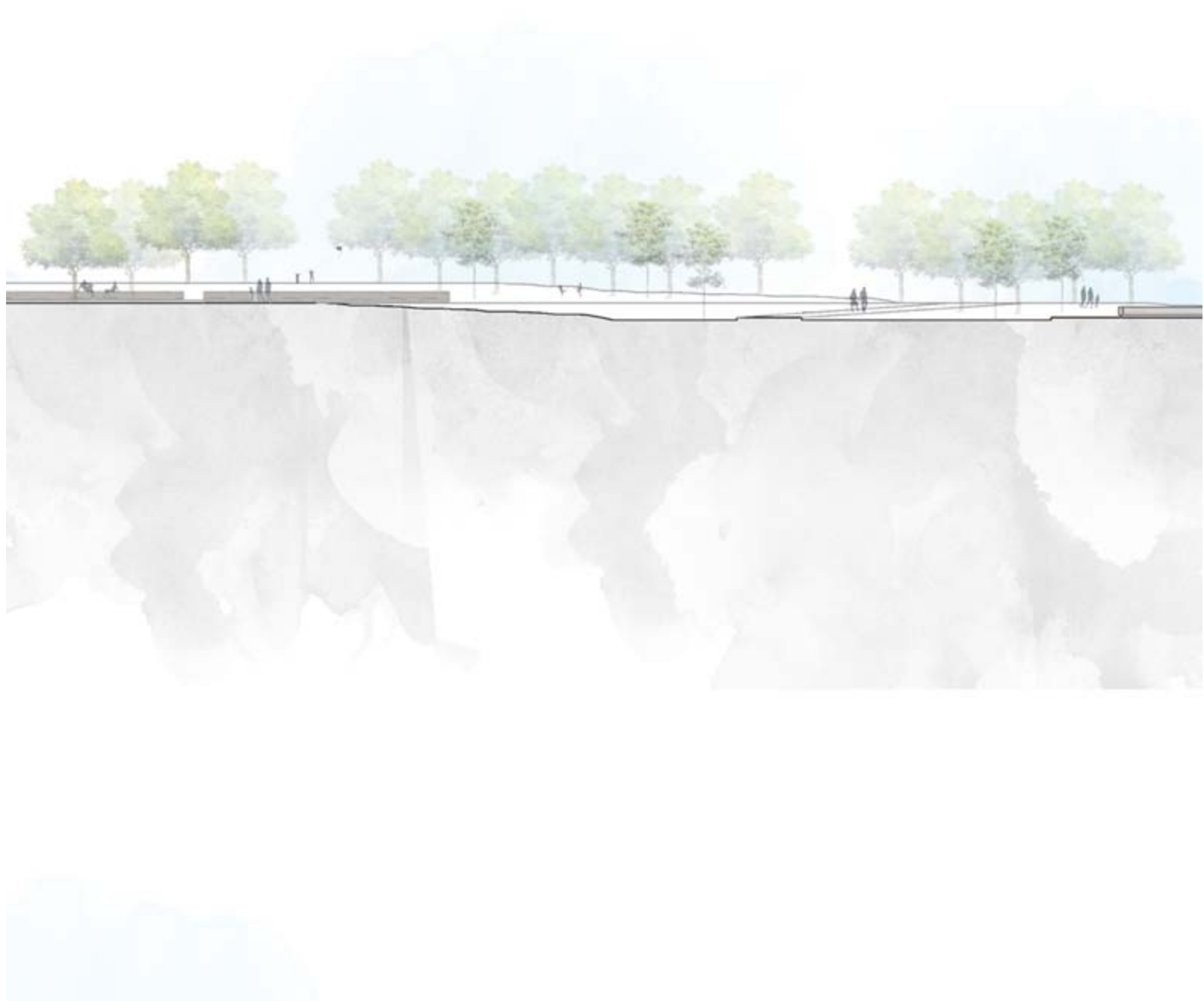




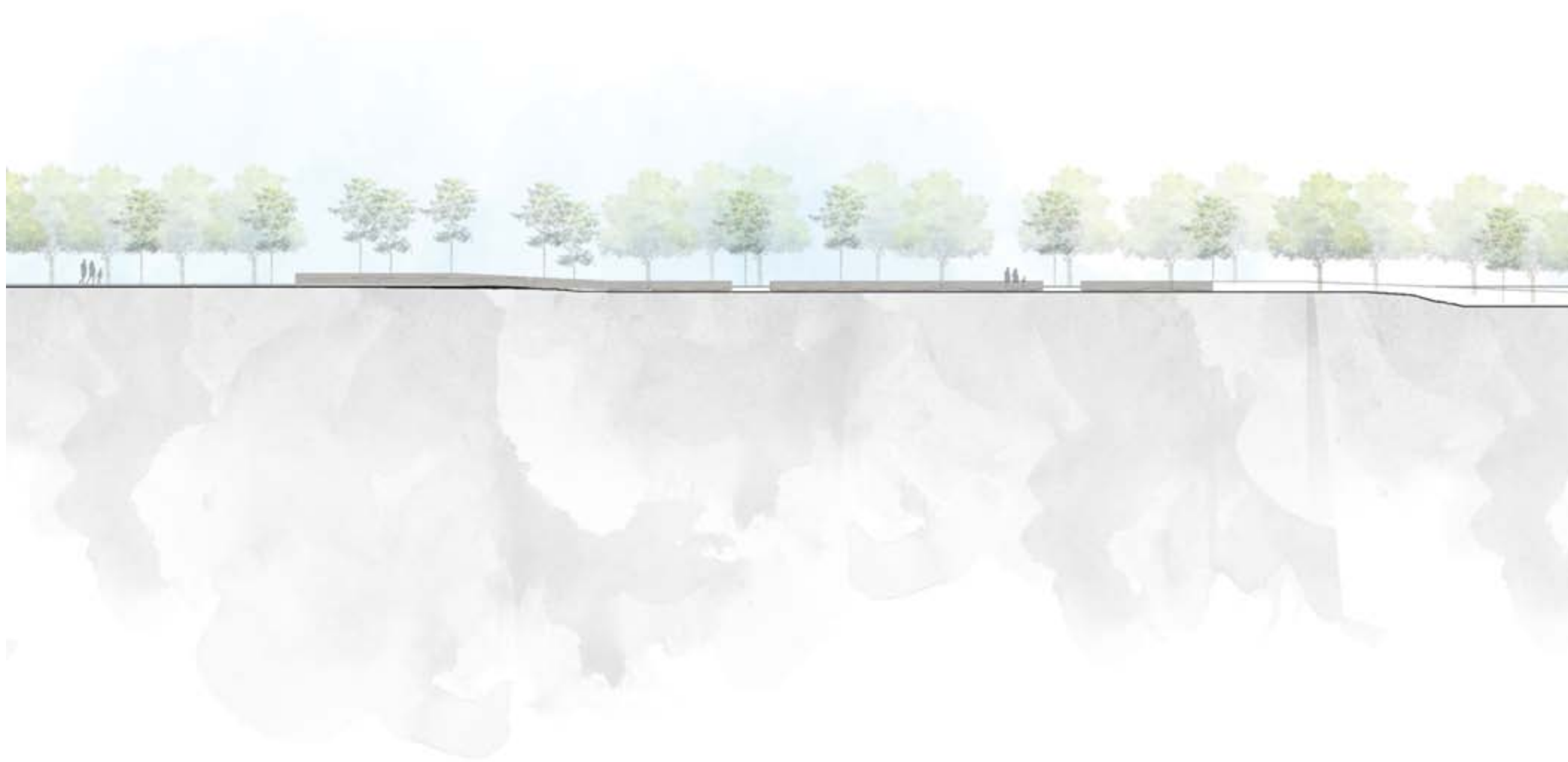




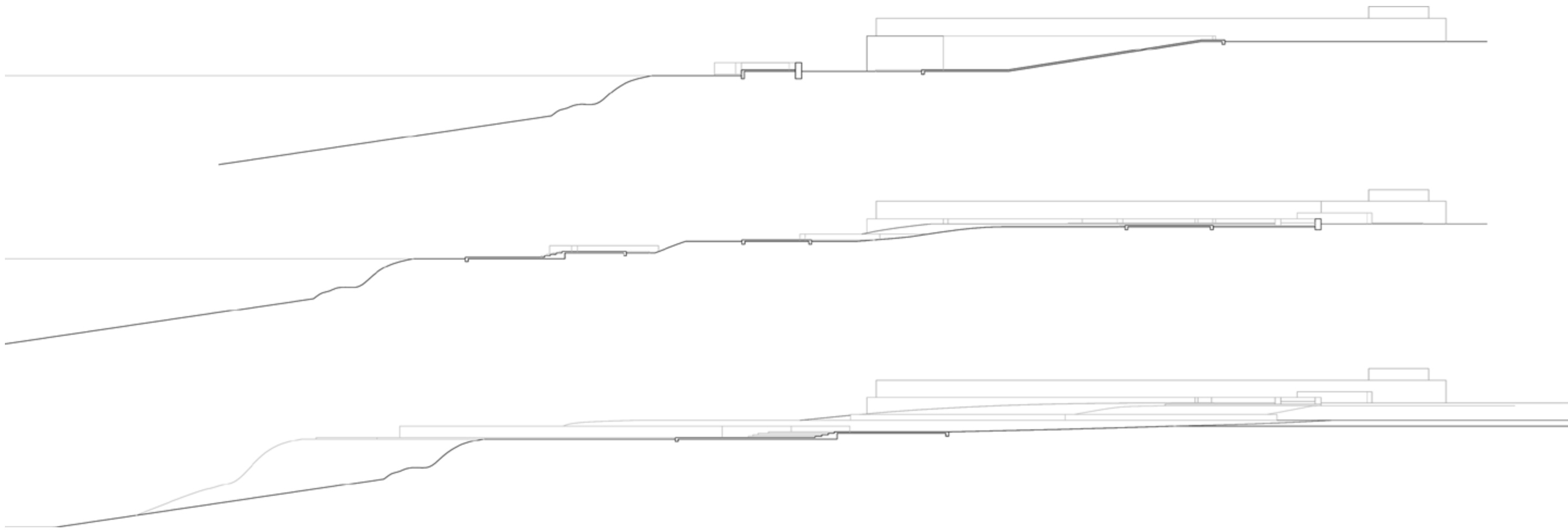
South East entrance to Park from residential area.







Park entrance from residential area.

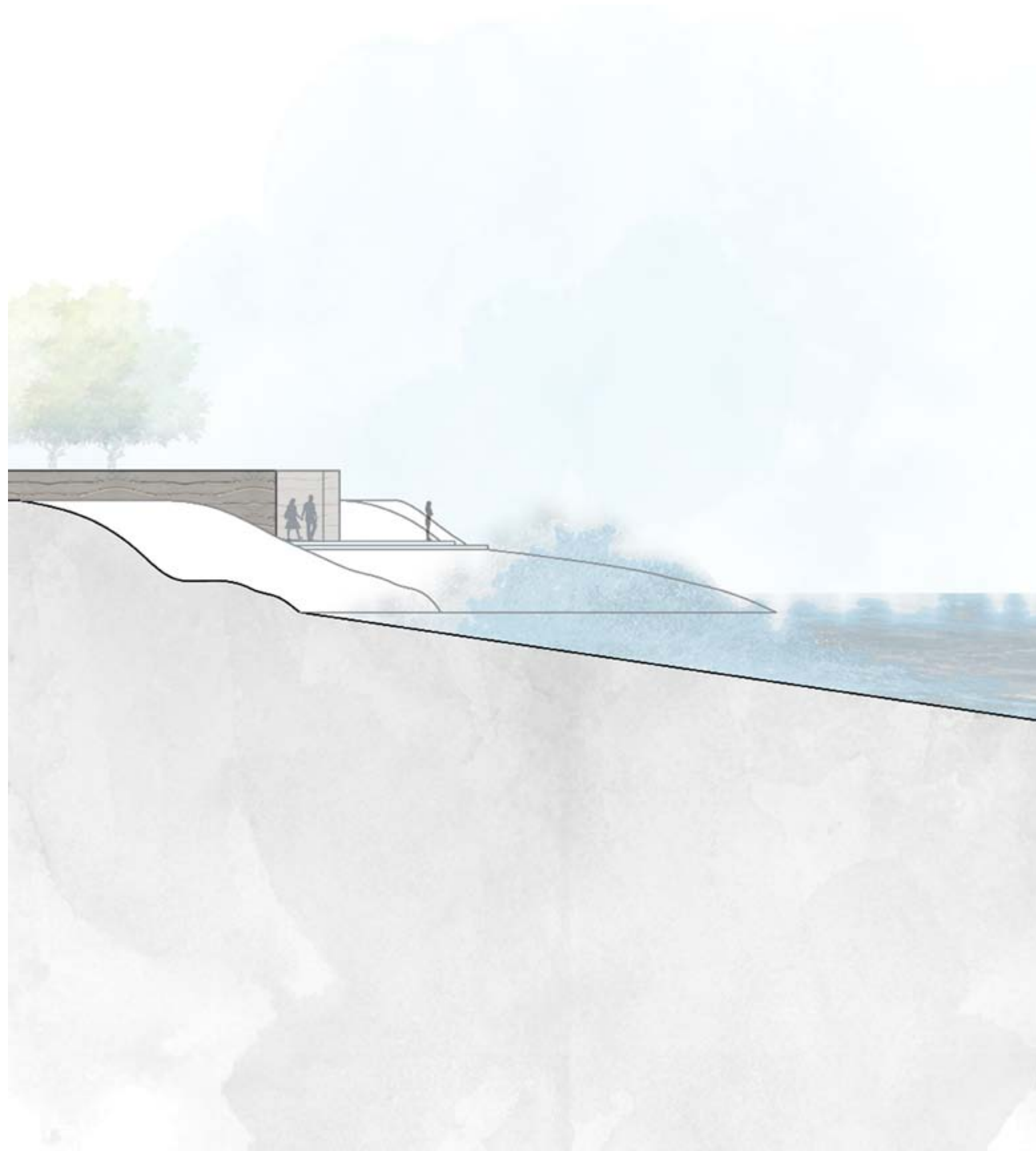






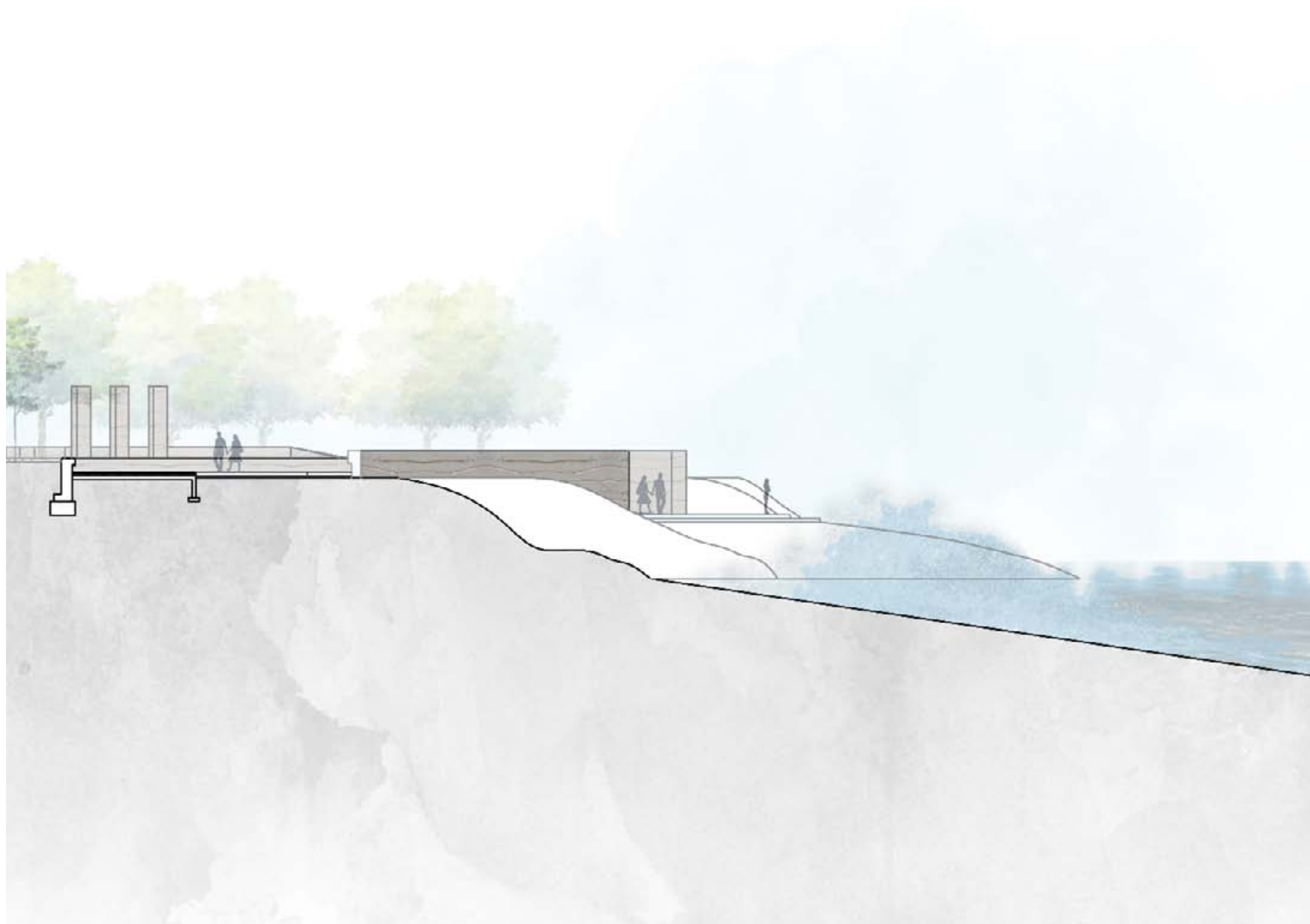
THE COASTAL EDGE

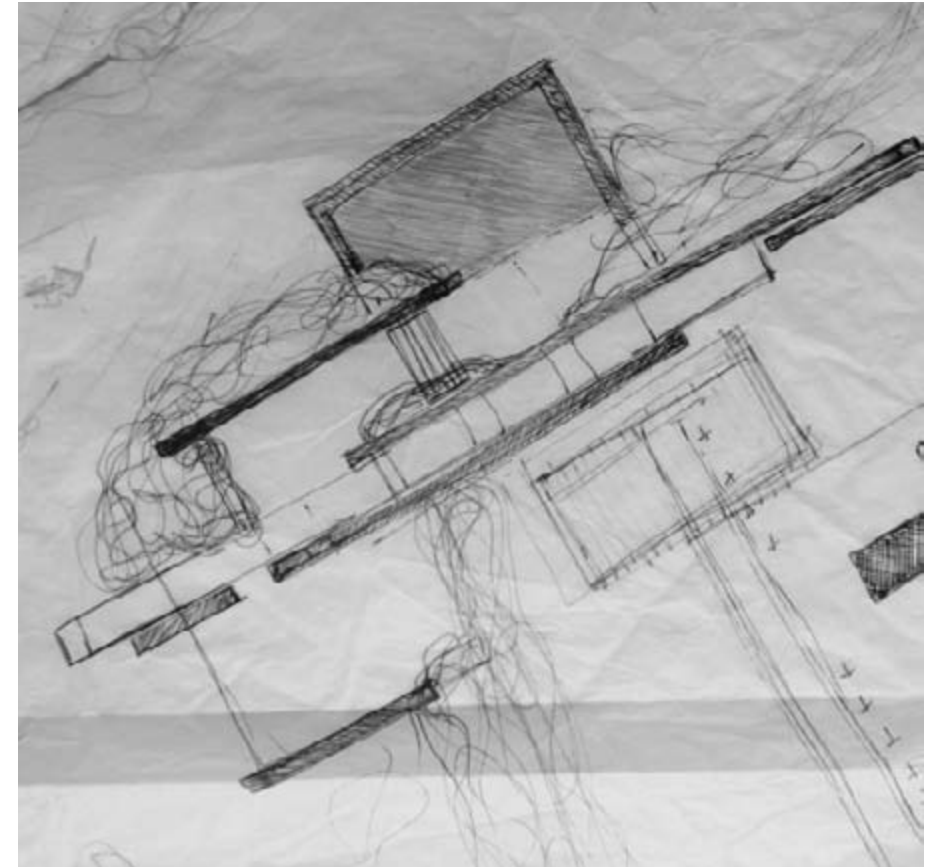
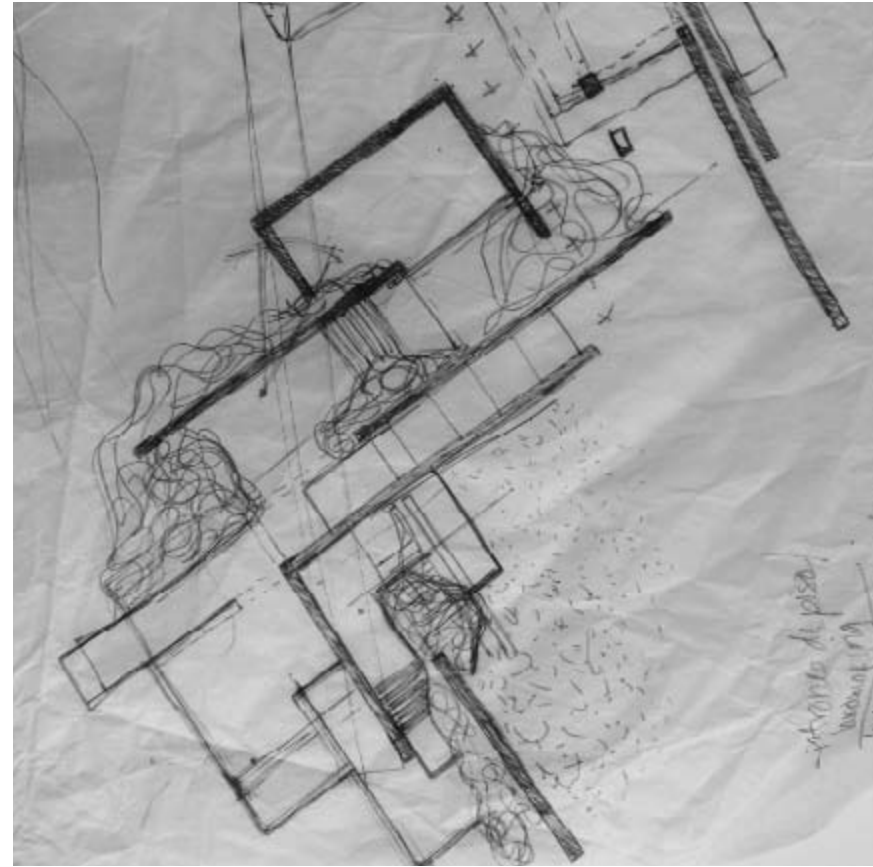
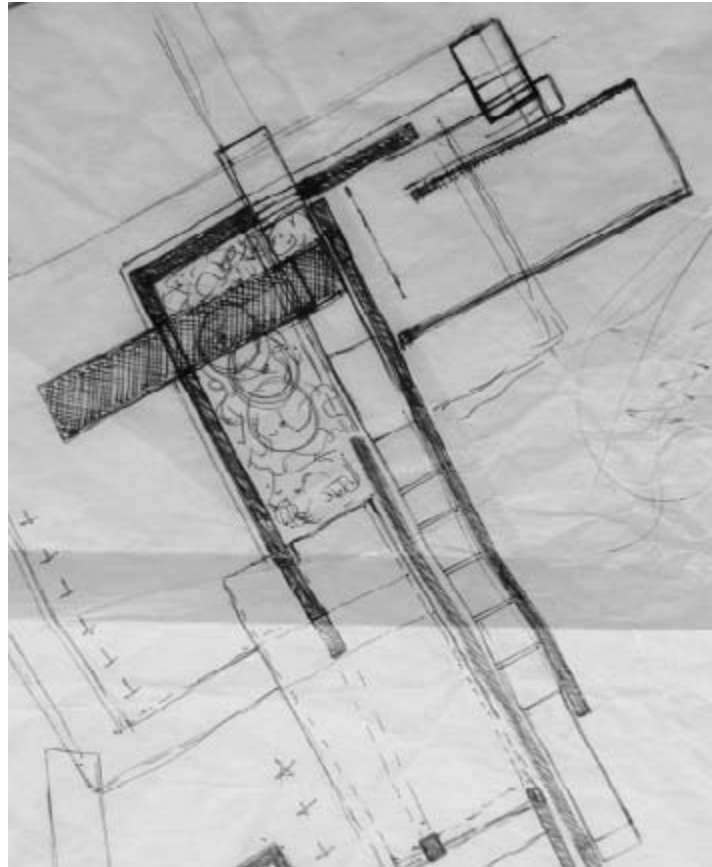
A place to feel and connect with the Ocean.

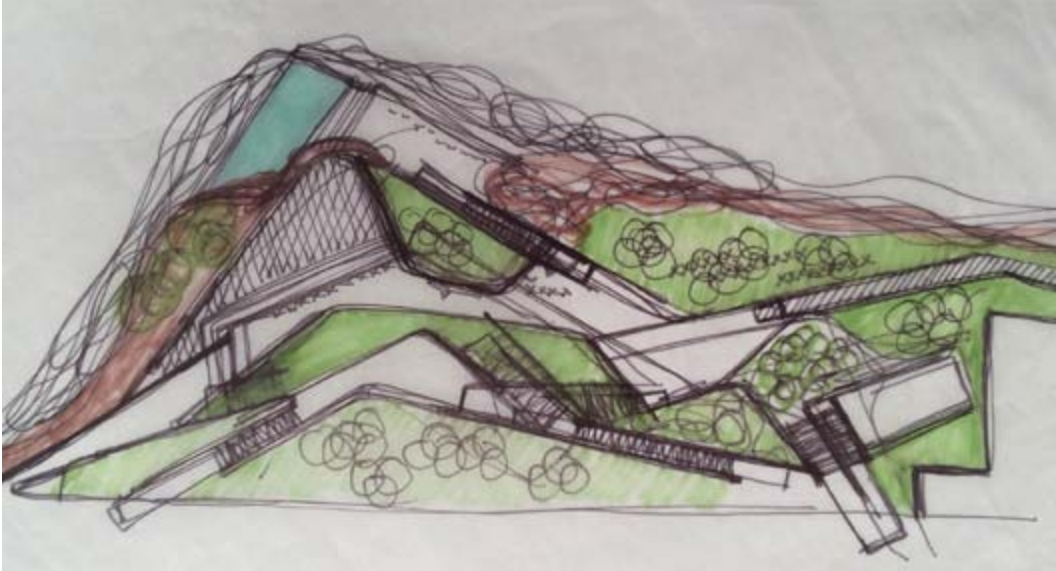
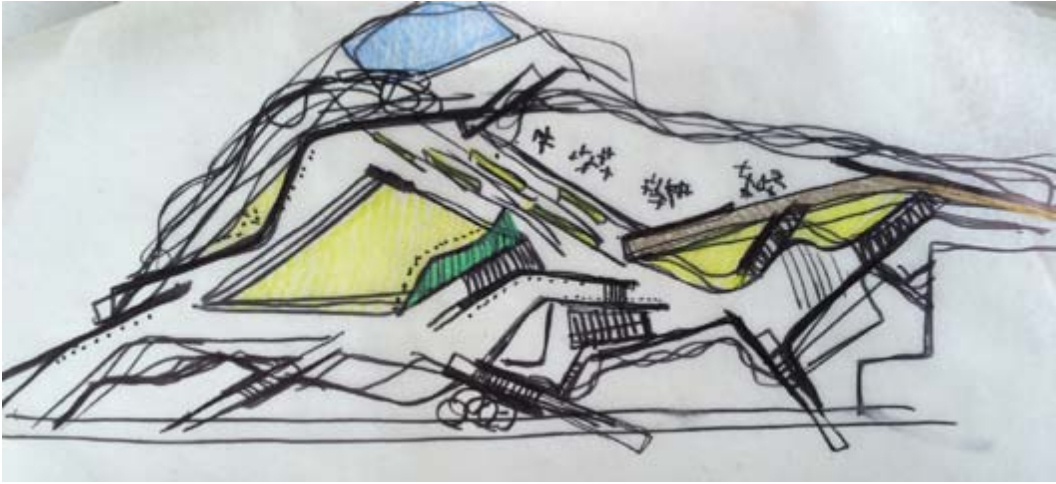




Coastal Edge lookout, a place to feel the ocean









Site aerial view