

# Community and Sustainability Along the New River

Tom Hansell, Co-Director, University Documentary Film Services,  
Assistant Professor, Center for Appalachian Studies

Mary Anne Redding, Assistant Director & Curator, Turchin Center  
for the Visual Arts

Kelsey Wagner, Graduate Student, Center for Appalachian Studies

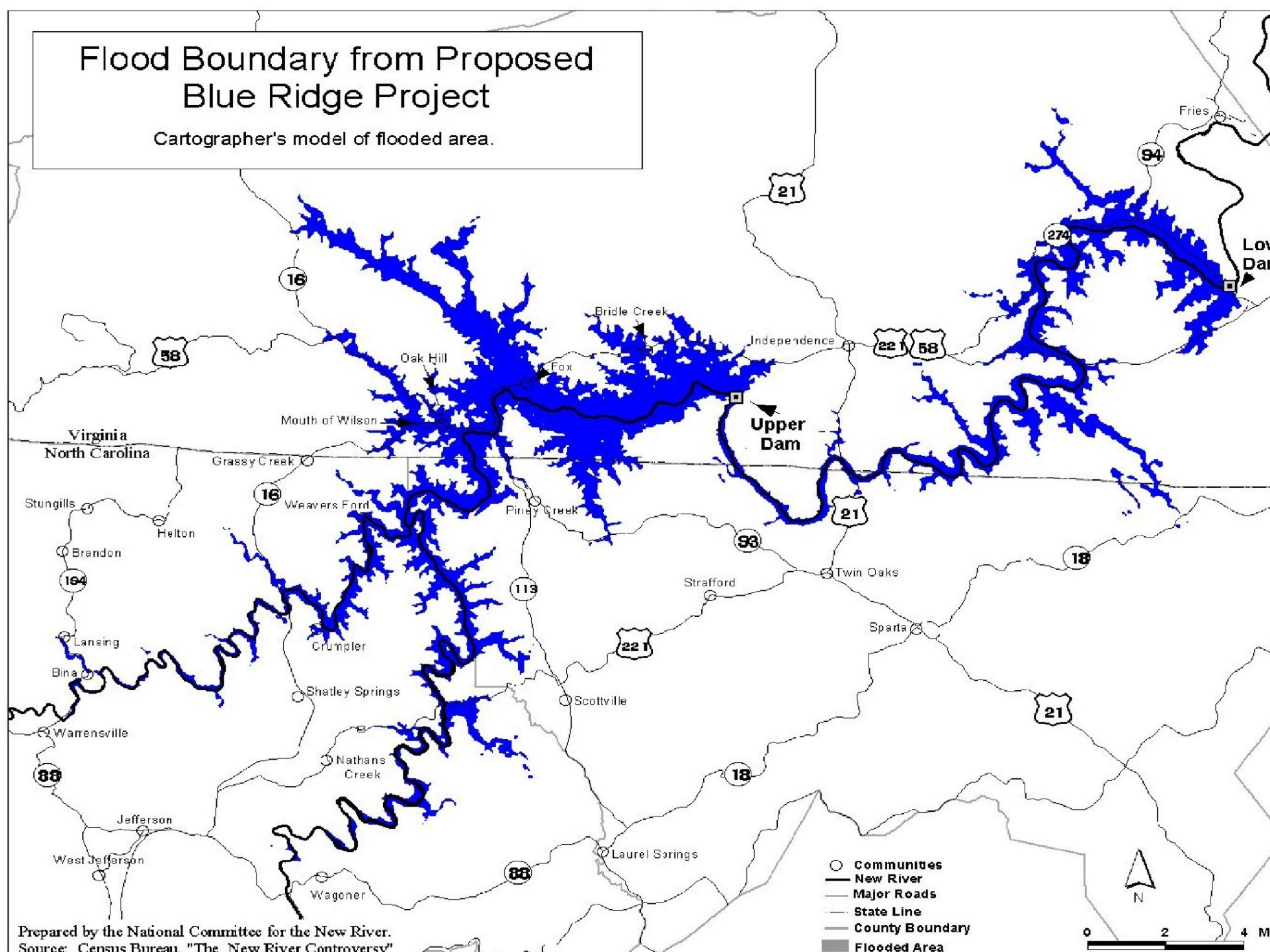


Photo Credit: Kelsey Wagner



# Flood Boundary from Proposed Blue Ridge Project

Cartographer's model of flooded area.



North Carolina State Scenic River - 1975  
National Wild and Scenic River - 1976  
An American Heritage River - 1998





# New River Basin

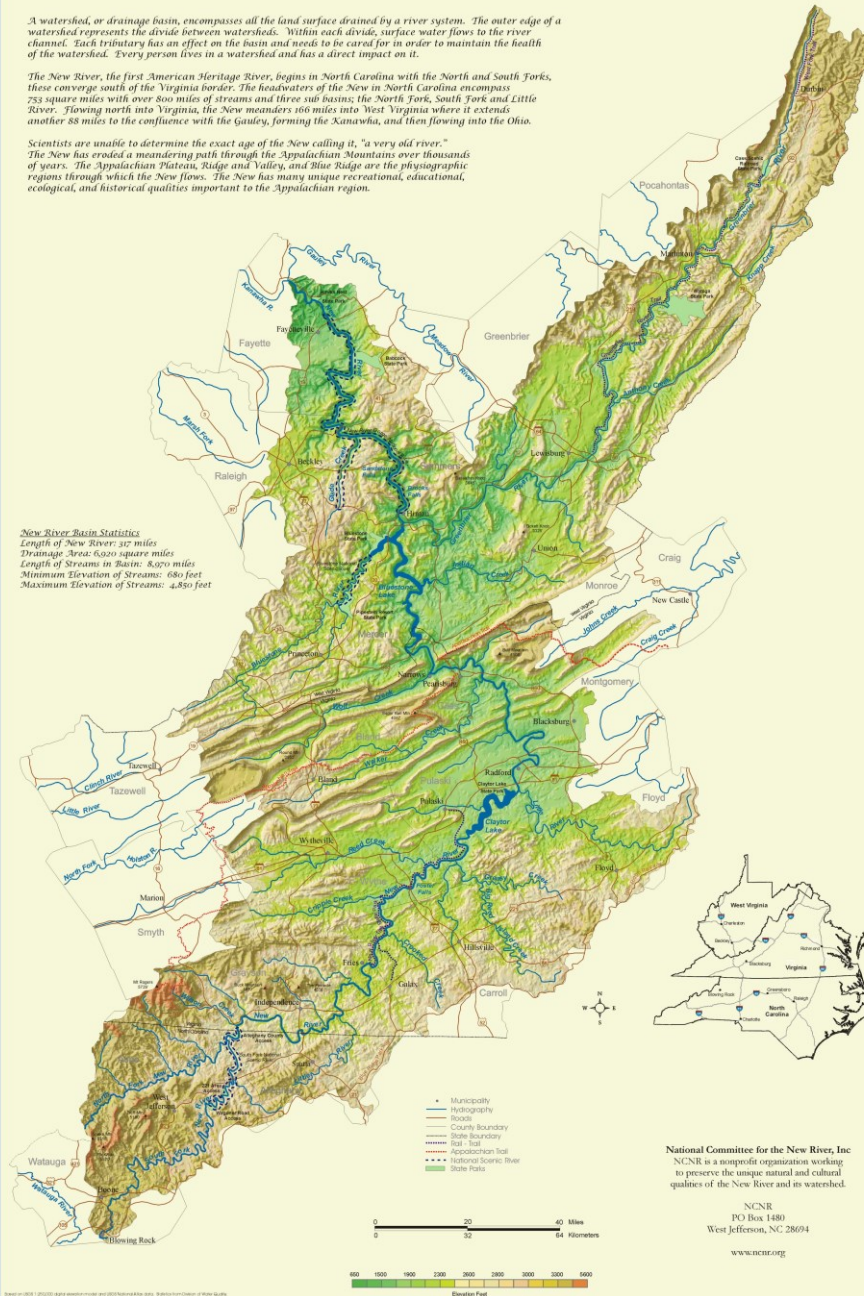
North Carolina, Virginia, West Virginia

A watershed, or drainage basin, encompasses all the land surface drained by a river system. The outer edge of a watershed represents the divide between watersheds. Within each divide, surface water flows to the river channel. Each tributary has an effect on the basin and needs to be cared for in order to maintain the health of the watershed. Every person lives in a watershed and has a direct impact on it.

The New River, the first American Heritage River, begins in North Carolina with the North and South Forks, these converge south of the Virginia border. The headwaters of the New in North Carolina encompass 753 square miles with over 800 miles of streams and three sub basins; the North Fork, South Fork and Little River. Flowing north into Virginia, the New meanders 166 miles into West Virginia where it extends another 88 miles to the confluence with the Gauley, forming the Kanawha, and then flowing into the Ohio.

Scientists are unable to determine the exact age of the New calling it, "a very old river."  
The New has eroded a meandering path through the Appalachian Mountains over thousands of years. The Appalachian Plateau, Ridge and Valley, and Blue Ridge are the physiographic regions through which the New flows. The New has many unique recreational, educational, ecological, and historical qualities important to the Appalachian region.

**New River Basin Statistics**  
 Length of New River: 317 miles  
 Drainage Area: 6,020 square miles  
 Length of Streams in Basin: 8,070 miles  
 Minimum Elevation of Streams: 680 feet  
 Maximum Elevation of Streams: 4,850 feet



National Committee for the New River, Inc  
 NCNR is a nonprofit organization working to preserve the unique natural and cultural qualities of the New River and its watershed.

NCNR  
 PO Box 1480  
 West Jefferson, NC 28694

[www.ncnr.org](http://www.ncnr.org)





Photo Credit: Mary Anne Redding





Photo Credit: Tom Hansell





Photo Credit: Tom Hansell





Photo Credit: Mary Anne Redding





Photo Credit: Mary Anne Redding





Photo Credit: Tom Hansell





Photo Credit: Tom Hansell





Photo Credit: Tom Hansell





Photo Credit: Mary Anne Redding





Photo Credit: Mary Anne Redding





Photo Credit: Tom Hansell





Photo Credit: Mary Anne Redding





Photo Credit: Tom Hansell





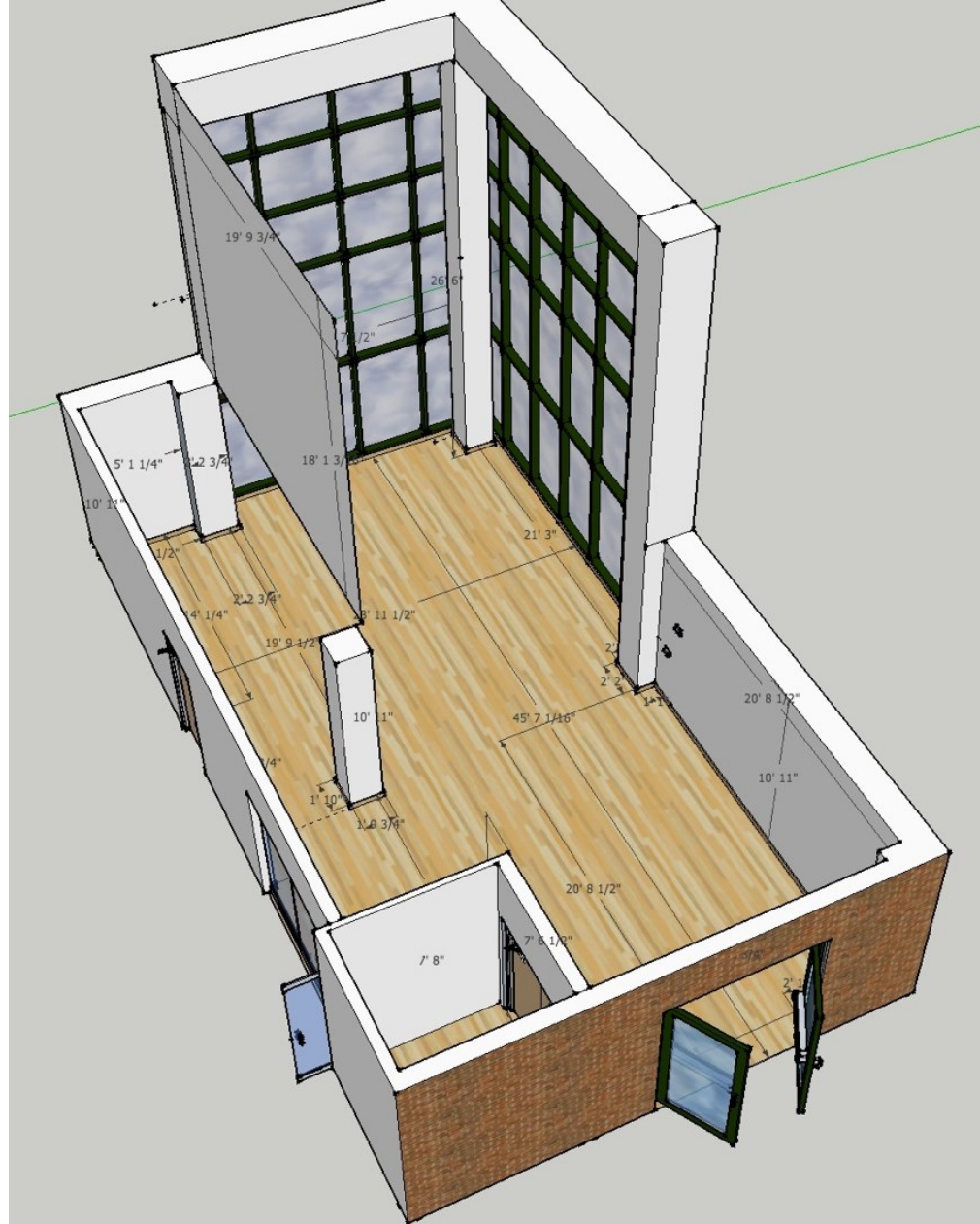
Photo Credit: Tom Hansell





Photo Credit: Tom Hansell





Mayer Gallery, Turchin Center for the Visual Arts





Photo Credit: Tom Hansell





Photo Credit: Tom Hansell





Photo Credit: Tom Hansell





Photo Credit: Tom Hansell





Photo Credit: Tom Hansell





Photo Credit: Tom Hansell





Photo Credit: Tom Hansell





Photo Credit: Tom Hansell





Photo Credit: Tom Hansell





Photo Credit: Craig Dillenbeck





Photo Credit: Craig Dillenbeck





Photo Credit: Kelsey Wagner





EXIT

### Collective Vigilance:

The 200 miles New River begins right in the mountains of southwestern North Carolina, along in the heart of the Southern Appalachian. The river, which is an extraordinary water resource, flows through the North Park in Ashe County and South Park in Watauga County. The river flows north to West Virginia and then back from North Carolina Blue Ridge into Virginia and West Virginia. One of the major rivers in the world, it provides the water in the United States. The headwaters of the New River come from the mountains of the North Carolina Blue Ridge. The New River continues to provide water to the people who live through mountains in the area and West Virginia and the mountains and the river who make mountains the heart of history by way of the Appalachian River.

Partnership with the Center for Appalachian Studies, the Mountain State Park Service, and the Mountain State Park Service in Appalachia and New River Conservancy (NRC) to address the importance of the New River to the North Carolina people both the citizens of the NRC and Appalachian State University in an ongoing project which includes the development of sustainable communities. We envision that "New River" health and environmental justice needs to be addressed by creating a sustainable future people can live with and love.

We hope that you, our visitors, will get involved with our community partners and to get back out into the world with the river with more information and a commitment to preserving this important natural and cultural resource.

- New River Conservancy
- Center for Appalachian Studies
- Appalachian Regional Council
- Appalachian Regional Commission
- Blue Ridge Conservancy
- Mountain State Park Service
- New River State Park
- Elk River State Park
- Mountain State Park
- River to River

### Speaking for the New River

Photo Credit: Kelsey Wagner





Photo Credit: Chelsea Blount





Photo Credit: Kelsey Wagner





Photo Credit: Kelsey Wagner





Photo Credit: Tom Hansell





Millions of tons of trash end up in our waters every year. The trash is not just floating in the water, it is also being eaten by marine life. The trash is a problem of just a small portion of all the trash that was pulled out of the New York and its tributaries during the fall 2014 academic semester. Students, faculty, staff and members of the community worked with the staff of the New York Conservancy for Clearing up the River in 2010, 2011, 2012, 2013 and 2014 to clean up the river and its tributaries. The trash was pulled out of the river and was put in a landfill.

Water 2015 at the US Environmental Protection Agency. The water is not clean. The water is not safe. The water is not healthy. The water is not good for the environment. The water is not good for the people who live in the area.

Photo Credit: Chelsea Blount





Photo Credit: Kelsey Wagner





Photo Credit: Tom Hansell





Photo Credit: Tom Hansell





the rock...  
covered in  
MOSS.  
THE MOSS covered  
THE  
RAVENS breaks into the  
fog blankets my narrow  
VALLEY full of beer cans  
~~best~~ washed.  
strong willed moss clings to  
the

Photo Credit: Tom Hansell





Photo Credit: Tom Hansell





Photo Credit: Kelsey Wagner





Photo Credit: Tom Hansell





Photo Credit: Tom Hansell





Photo Credit: Kelsey Wagner





Photo Credit: Tom Hansell





Photo Credit: Kelsey Wagner





Photo Credit: Kelsey Wagner





Photo Credit: Kelsey Wagner





Photo Credit: Kelsey Wagner



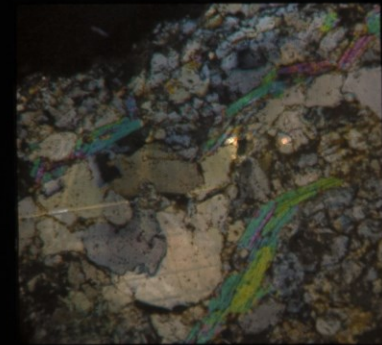
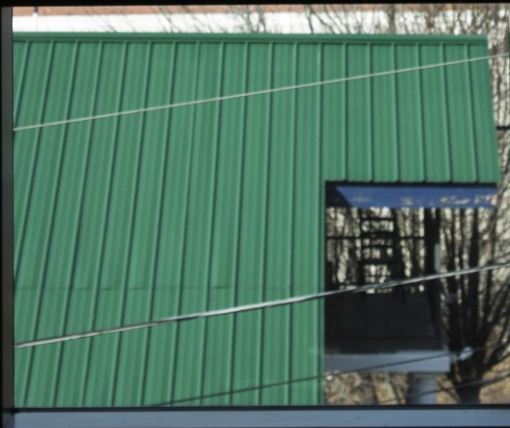
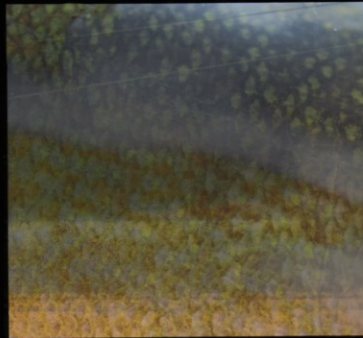
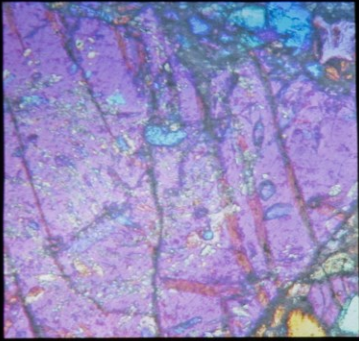


Photo Credit: Tom Hansell





Photo Credit: Kelsey Wagner





Photo Credit: Kelsey Wagner





Photo Credit: Chelsea Blount





Photo Credit: Tom Hansell





Photo Credit: Chelsea Blount



Celebrate the New River with the Turchin Center!

# WEEKEND-ON-THE-RIVER

## New River State Park, 221 Access

358 New River State Park Rd, Laurel Springs, NC 28644 in Ashe County

Friday May 5 - Sunday May 7, 2017



Friends of the river and the arts are invited outdoors to celebrate the river, experience the park and relax with family and friends.

Join us for a few hours, a day or for the weekend.

The park offers opportunities to play in the river, picnic, hike, and camp.



### Site Specific Art Installation

Sculptor Keith Bryant will install a site-specific art installation of 365 colorful ceramic spheres on the banks of the river just for this event.

### Scheduled Activities on Saturday

- 10:30 a.m. **Water analysis** with the New River Conservancy
- 1:30 p.m. **Aquatic sampling** in the river  
Prepare to get wet!
- 4:30 p.m. **Artist talk** with Keith Bryant, sculptor and artist of the site-specific installation



Bad weather event updates will be posted on Facebook @turchincenter. Updates can also be obtained by calling the New River State Park or Turchin Center during business hours at the numbers below.



Turchin Center for the Visual Arts  
423 West King Street, Boone, NC 28608  
828.262.3017 turchincenter@tcva.org

New River State Park, 221 Access  
336.982.2587

[tcva.org/calendar/events](http://tcva.org/calendar/events)







Photo Credit: Crista Cammaroto



1976-2016 wild and scenic river  
40  
YEARS



## New River Conservancy

*Protecting the waters, woodlands and wildlife  
of the New River Watershed*