

# Campus Beautification Projects



Summer 2015



# STATEMENT OF PURPOSE

Virginia Tech will *create physical spaces*, both indoors and outdoors, which *support* a culture of *community* and connection for *meaningful interactions* and *relationships* among students, staff, and faculty.

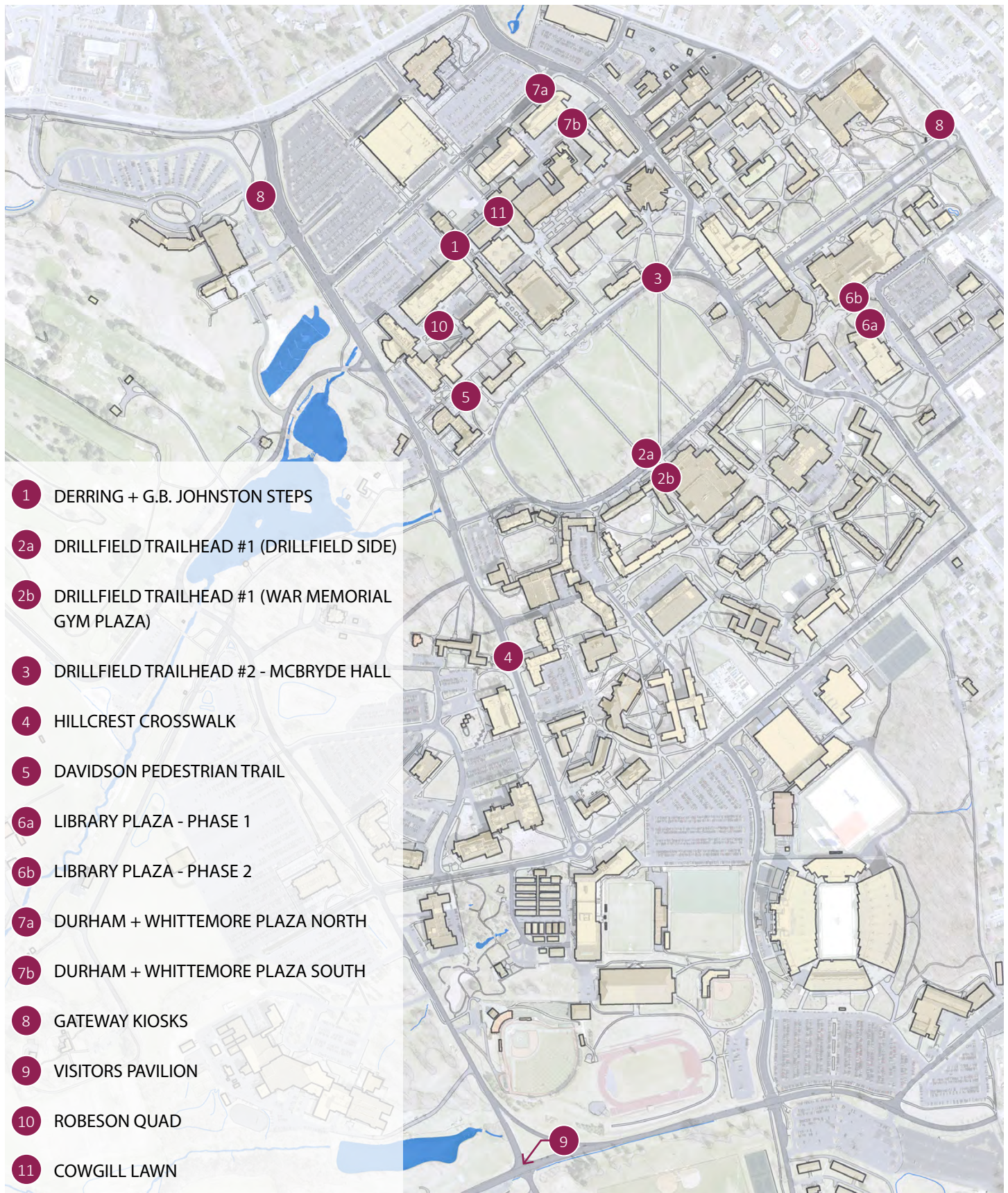
Virginia Tech's *beautiful landscape, iconic architecture*, and relationship between *buildings and open spaces* creates a powerful ***"sense of place."***



# PROJECT CONCEPTS



# PROJECT CONCEPT LOCATION MAP



# DERRING + G.B. JOHNSTON STEPS



*Lower Site - Derring Steps*

Located in an area historically used as the “back-door” to campus, the Derring / GBJ Steps project seeks to make this entrance more welcoming to the public. This project also aims to activate the under-utilized intermediate plaza levels at each surrounding building by developing them into public spaces. Other goals include improving access to and screening an existing service area.



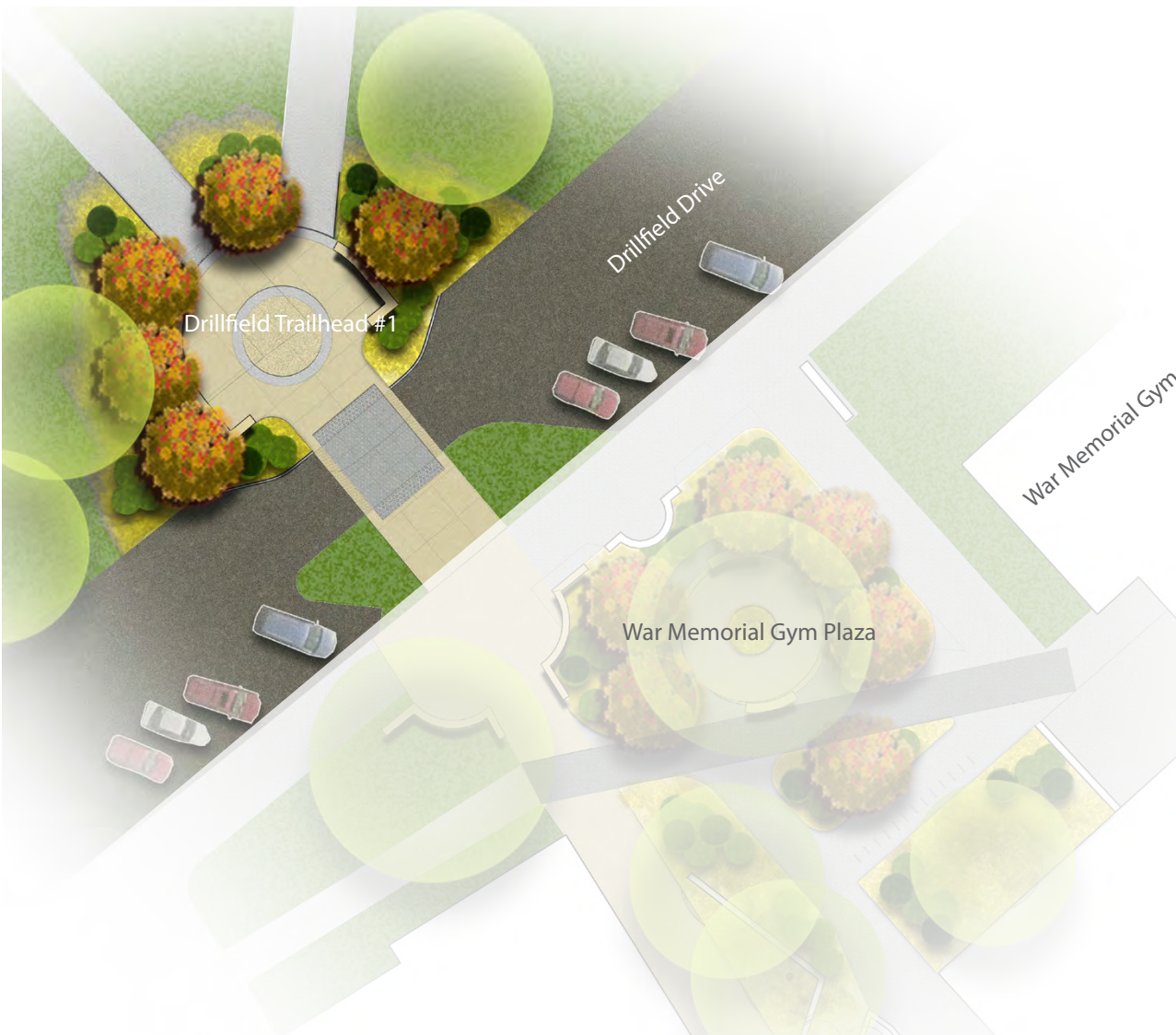
*Upper Site - G.B. Johnston Steps*

# DRILLFIELD TRAILHEAD #1 (DRILLFIELD SIDE)

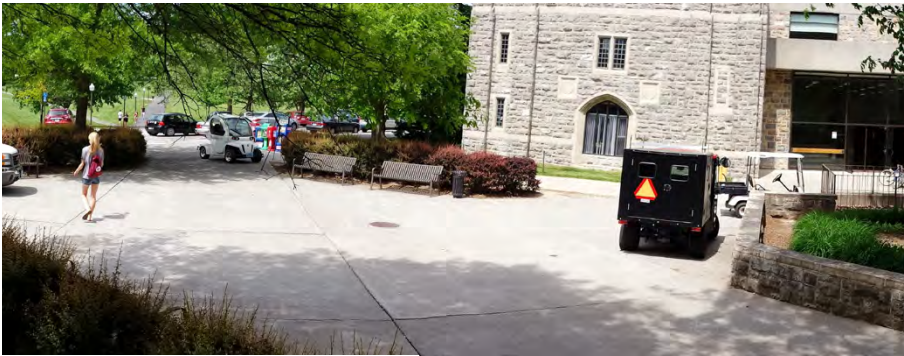


Drillfield Trailhead #1

The Trailhead projects are a primary component of the Drillfield Master Plan. The goals of the Trailheads are to enhance the street presence on Drillfield Drive and to highlight existing pedestrian entry portals onto the Drillfield. Trailhead #1 specifically aims to make a stronger physical connection between War Memorial Gym and the south side of the Drillfield. This project series will accomplish its goals by providing more seating opportunities with improved site furnishings and amenities, upgrading pathway materials and light fixtures, enhanced pedestrian safety at crosswalks, and cultivating higher level landscape treatments.



# DRILLFIELD TRAILHEAD #1 (WAR MEMORIAL GYM PLAZA)



War Memorial Gym Entry Plaza

Capitalizing on the momentum of the Drillfield Trailhead Projects, a design concept has been developed for the War Memorial Gymnasium's North Entry Plaza. The design at War Memorial Gym seeks to reinforce the improved pedestrian circulation pattern proposed in the Trailhead #1 concept. Beyond this, the project will provide upgraded amenities such as an improved bicycle parking area, new seating, and a higher level landscape treatment.

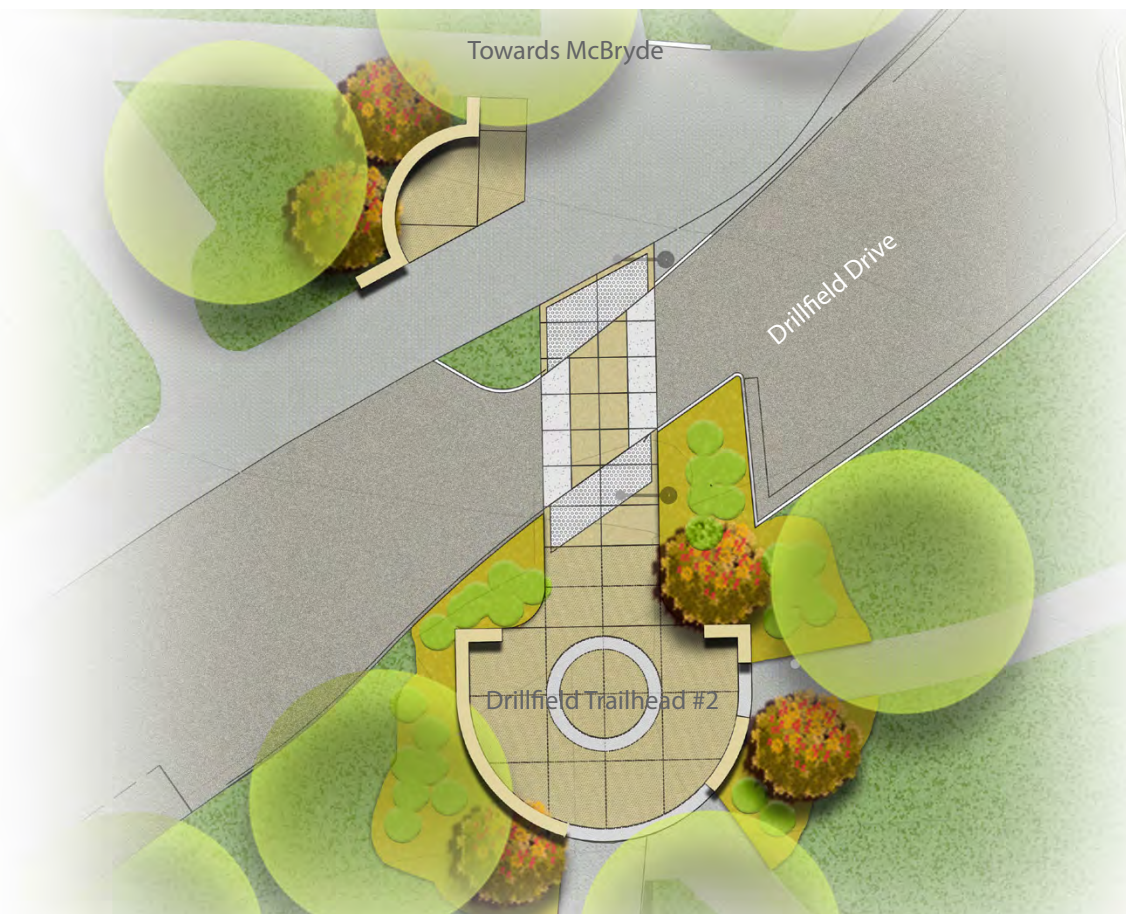


# DRILLFIELD TRAILHEAD #2 (MCBRYDE HALL)



Existing Conditions

The Trailhead projects are a primary component of the Drillfield Master Plan. The goals of the Trailheads are to enhance the street presence on Drillfield Drive and highlight existing pedestrian entry portals onto the Drillfield. Trailhead #2 specifically aims to make a stronger physical connection to the highly utilized McBryde Hall. This project series will accomplish its goals by providing more seating opportunities with improved site furnishings and amenities; upgrading pathway materials and light fixtures, enhancing pedestrians safety at crosswalks, and cultivating higher level landscape treatments.





# Campus Beautification Projects

## HILLCREST CROSSWALK

The Hillcrest Crosswalk project is part of an overall mission on campus to enhance the pedestrian experience by implementing a higher level of safety standards. The project achieves this goal by relocating an existing crosswalk on West Campus Drive, which has already been built, and with a much wider and more prominently located crosswalk in front of Engel Hall. Its presence will be reinforced with other enhancements, including improved pathway materials, landscape, and lighting. A new seating area with high quality materials and landscape treatments will also be developed outside of Hillcrest Hall.



Existing Conditions



NOTE: PARTIAL CONSTRUCTION COMPLETED SPRING, 2015

# DAVIDSON PEDESTRIAN TRAIL



The Davidson Pedestrian Trail project is part of an overall goal on campus to enhance the pedestrian experience by implementing a higher level of pathway materials and landscape treatments. This project is a response to pedestrian desire lines created from the Davidson Hall Capital Project. Like the Drillfield Trailhead projects, this project will provide more seating opportunities with improved site furnishings and amenities, upgraded pathway materials, and higher level landscape treatments.



New Paths

Seating

Landscaping

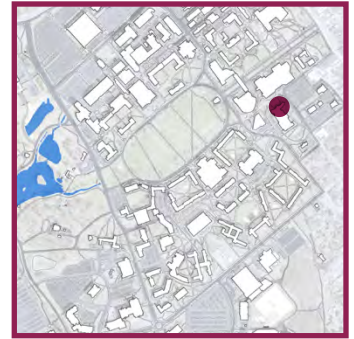
Trailhead Detail



Existing Conditions

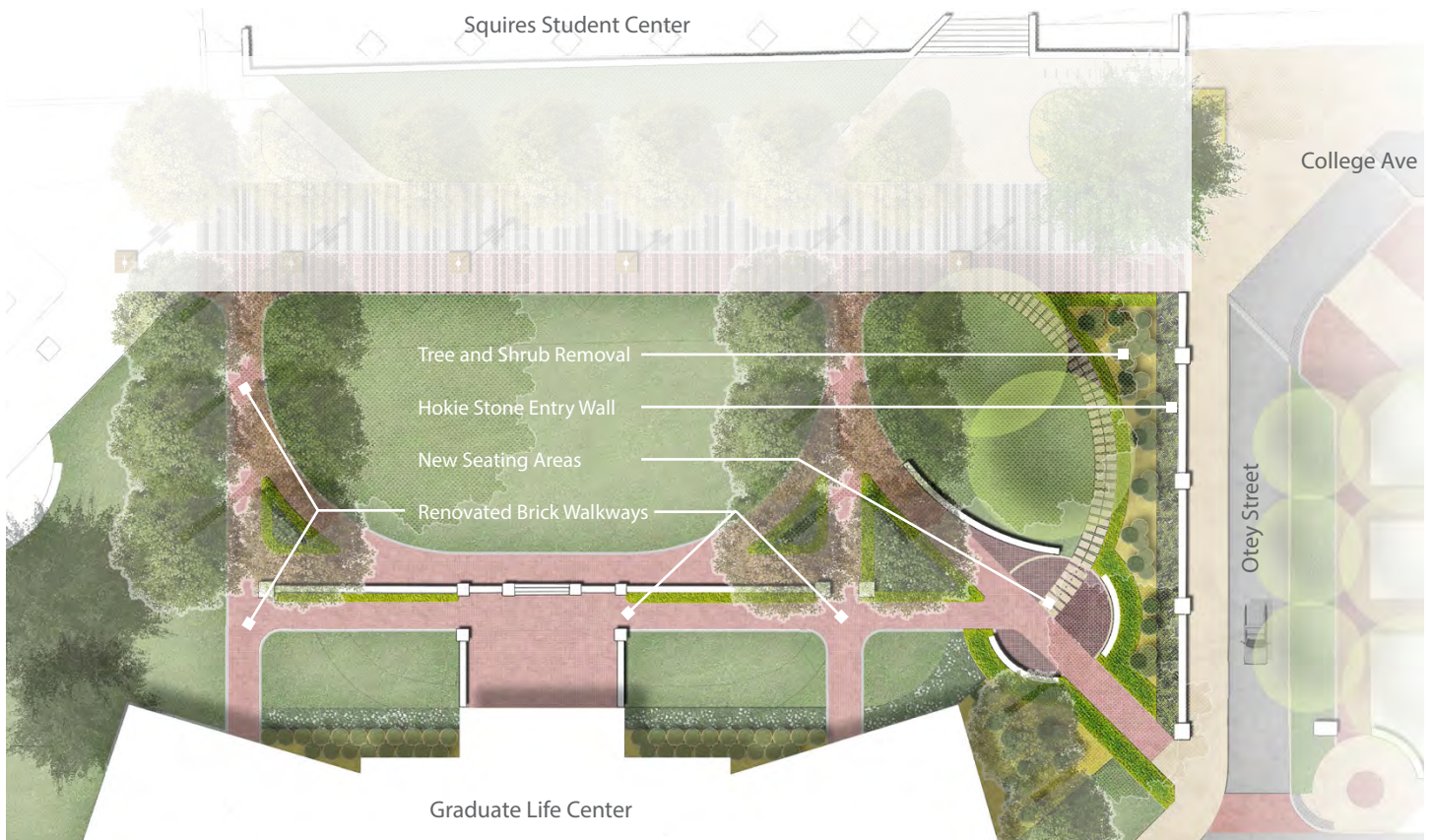


# LIBRARY PLAZA (PHASE I)



Existing Conditions

The Library Plaza concept seeks to capitalize on the success of the streetscape improvements on College Avenue by enhancing the visual and physical connectivity from downtown Blacksburg to Virginia Tech's campus. Phase One of this project will emphasize this campus gateway with a new Hokie Stone entry wall and sign along Otey Street. A visual connection to the historic Graduate Life Center (GLC) building will be re-established through strategic tree and shrub removal. New seat walls and furniture will also provide opportunities for social engagement. The GLC's lawn and brick walkways will be renovated during this phase as well.



# LIBRARY PLAZA (PHASE II)

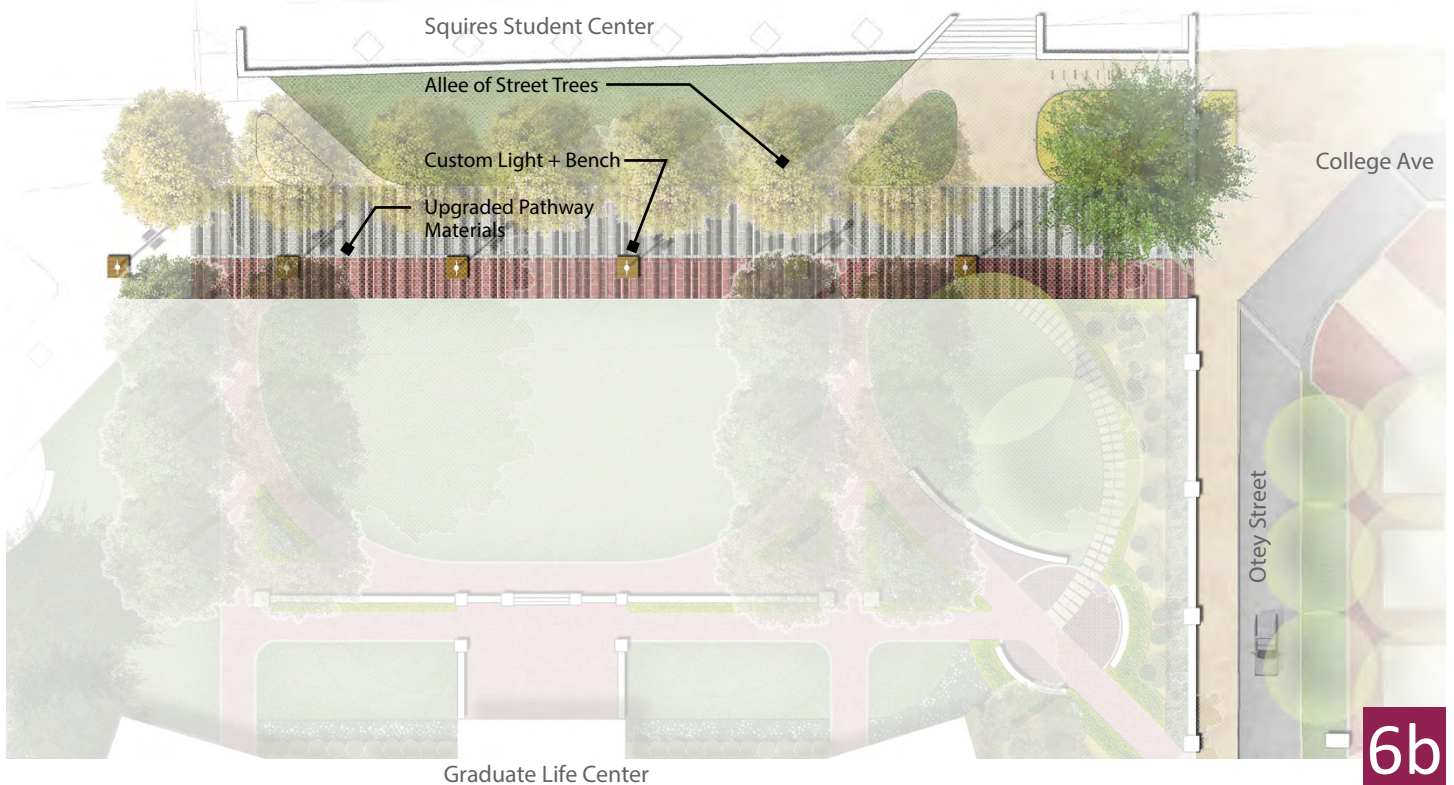


Existing Conditions

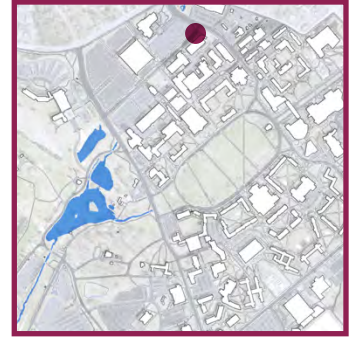


Existing Conditions

The Library Plaza concept seeks to capitalize on the success of the streetscape improvements on College Avenue by enhancing the visual and physical connectivity from downtown Blacksburg to Virginia Tech's campus. Phase Two of this project aims to enhance the pedestrian corridor by extending the streetscape framework beyond College Avenue and into the Virginia Tech campus. This project will accomplish its goals by providing more seating opportunities with improved site furnishings and amenities, upgrading pathway materials and light fixtures, and cultivating higher level landscape treatments.



# DURHAM / WHITTEMORE NORTH PLAZA

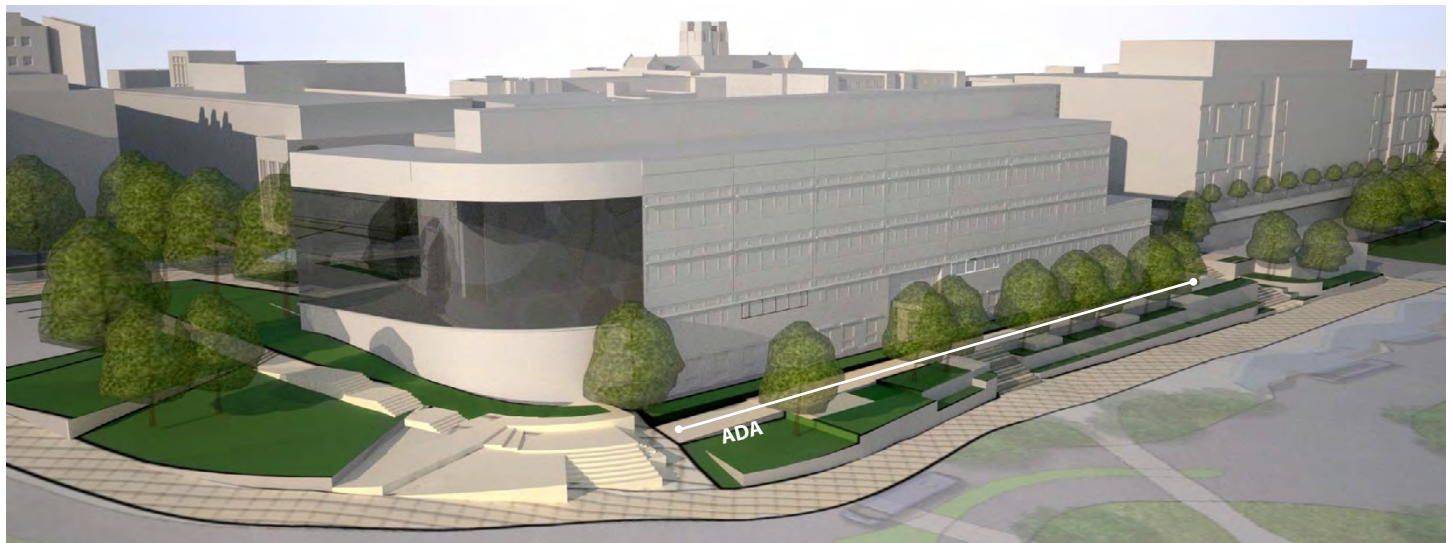


Existing Conditions

The Durham /Whittemore North Plaza project is part of an overall mission on campus to enhance the pedestrian experience. This project aims to achieve this mission by creating an accessible path to the Durham / Whittemore South Plaza from the intersection of Stanger and Perry Street. This new connection will be bolstered by upgraded pathway materials, improved site furnishings, and a high level landscape buffer between the pedestrian streetscape and Durham Hall. Also, a set of existing stairs will be reconstructed into a more visually prominent architectural feature that will connect the new multimodal pedestrian plaza to the Durham / Whittemore South Plaza.



View of Future Stairs from Perry Street



View from Corner of Stanger Street + Perry Street

# DURHAM / WHITTEMORE SOUTH PLAZA



The Durham / Whittemore South Plaza project is part of an overall mission on campus to enhance the pedestrian experience by implementing a higher level of safety standards. This project aims to achieve this mission by separating vehicular and pedestrian circulation along an access road through development of a continuous streetscape equipped with upgraded pathway materials, seating, site furnishing, and a higher level landscape treatment.



*Concept Image*

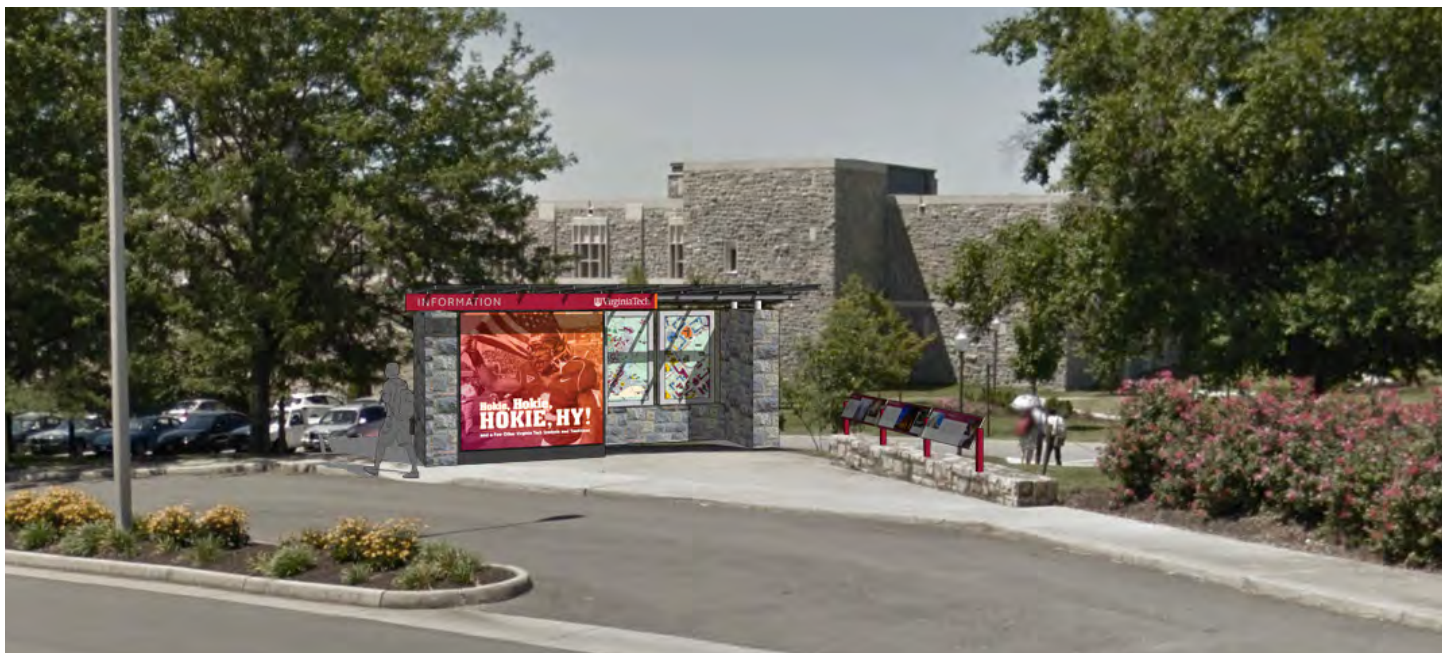


*View along Access Road*

# GATEWAY KIOSKS



The Gateway Kiosks provide an opportunity to welcome visitors. They act as a second or self-serve "Visitors Center." Currently the kiosks are uninviting, out of date, and under-utilized. The new kiosks will be built in the same locations to take advantage of existing vehicular roadway alignments. Existing graphics will be replaced in order to be uniform with the new Virginia Tech Campus Standards. Each kiosk contains a campus map, a district and zone map, promotional displays, and interpretive signage. The updated infrastructure will also be built to house future electronic displays.

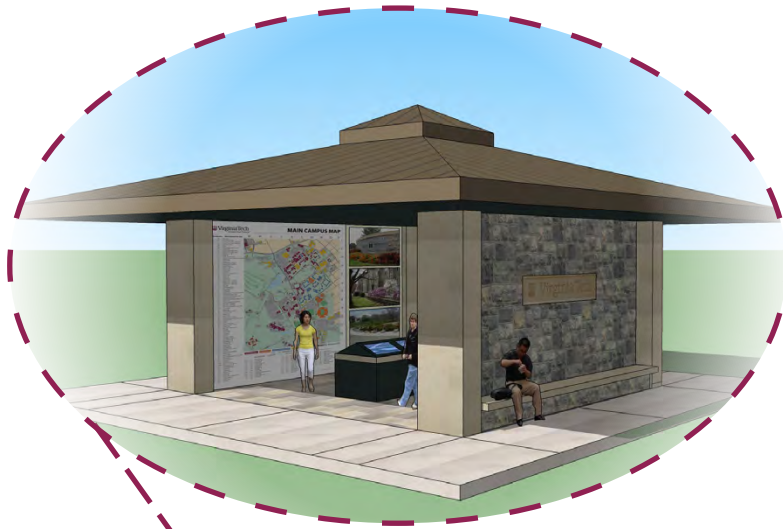


# Campus Beautification Projects

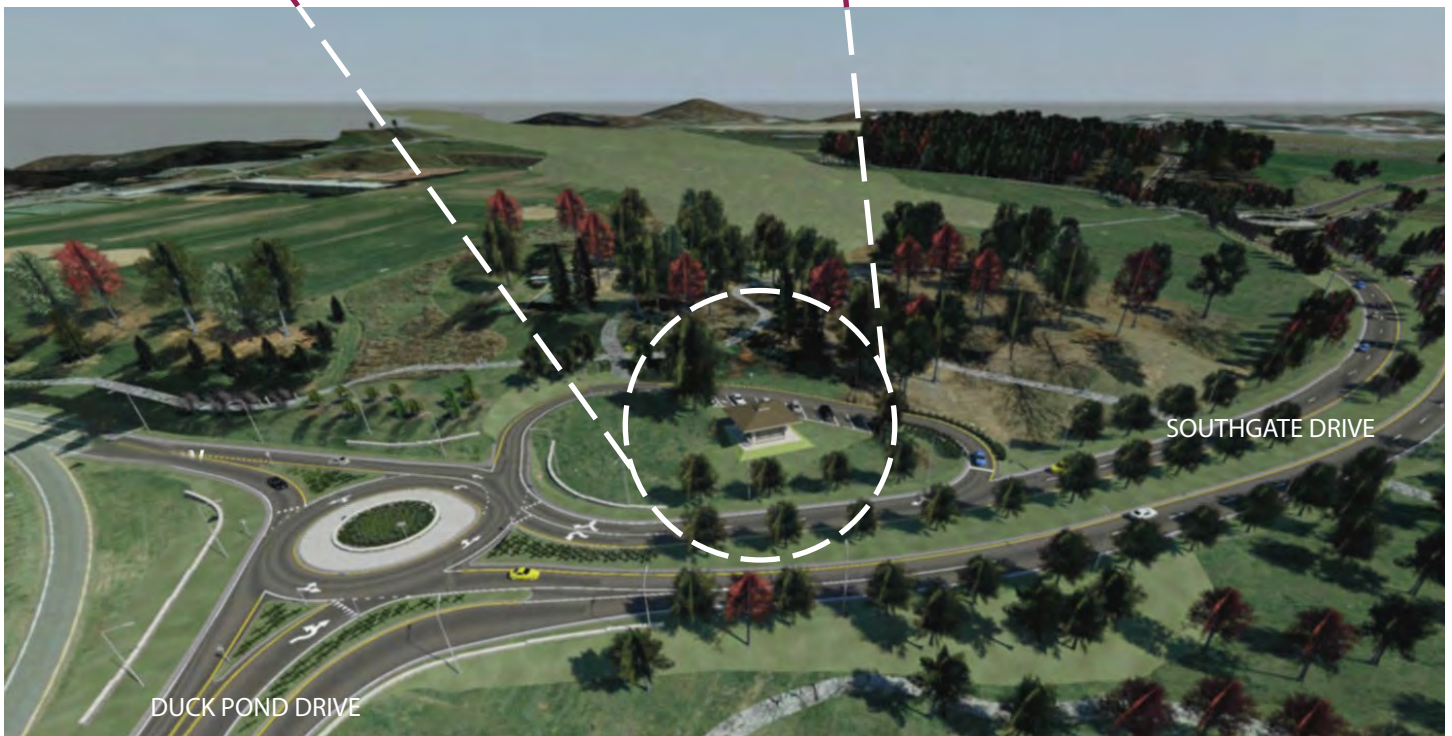
## VISITORS PAVILION



The Visitors Pavilion, which serves as a district gateway to campus, will provide a one-stop information center to campus visitors. The pavilion, located near the entrance to Route 460 and Southgate Drive, will contain a campus map, a district & zone map, promotional displays, and interpretive signage. The pavilion will also contain an interactive mapping and wayfinding display.



*Visitors Pavilion*



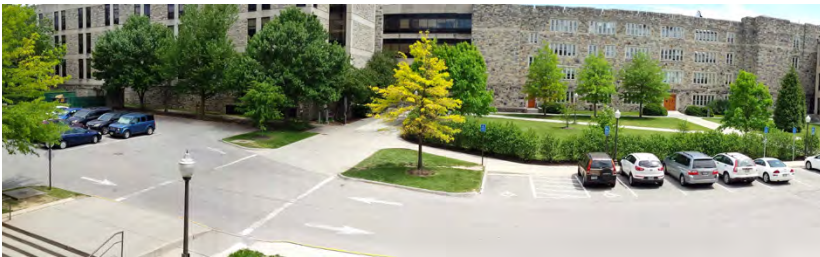


# Campus Beautification Projects

## ROBESON QUAD



Existing Conditions

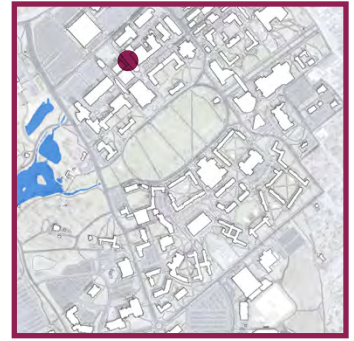


Existing Conditions

The Robeson Quad design seeks to create a more efficient parking area without losing any parking spaces. The reclaimed area will be returned to green space in an effort to continue the enhancement of the overall user experience on campus. This space will be equipped with new seating opportunities and high quality site furnishings, upgraded pathway materials and light fixtures, and a high level landscape treatment.

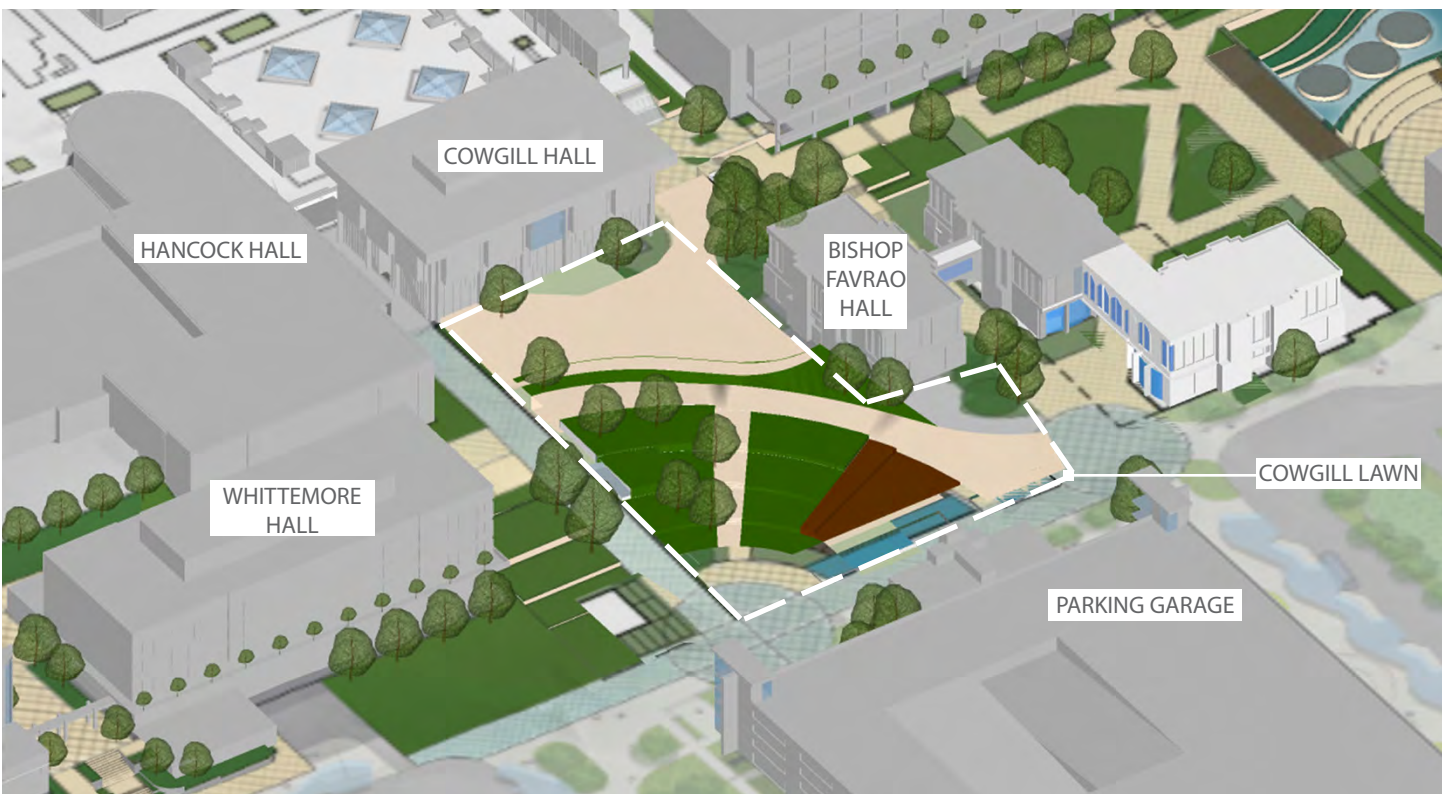


# COWGILL LAWN



Existing Conditions

The new Cowgill Lawn design will enhance the campus experience and aid in providing a pleasant transition from the new Multi-Modal Transit Facility / Perry Street Pedestrian Area to the rest of campus. With terraced seating and an accessible pathway, this lawn will help create the characteristic spatial branding that helps define Virginia Tech's campus. The Cowgill Lawn will also be available for special events, open classroom activities, and exhibitions.



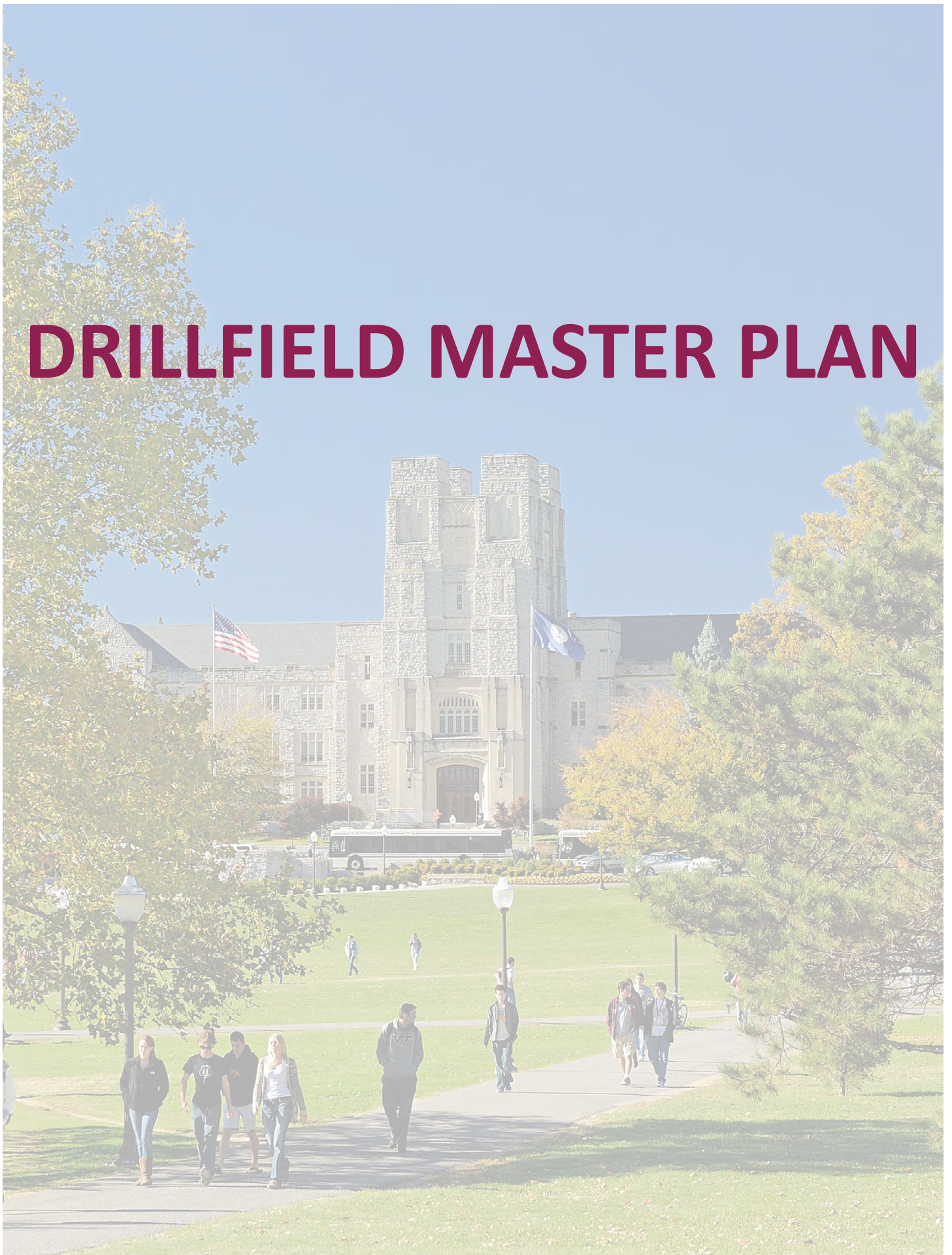
# PROJECT CONCEPT LIST

## ESTIMATED COSTS



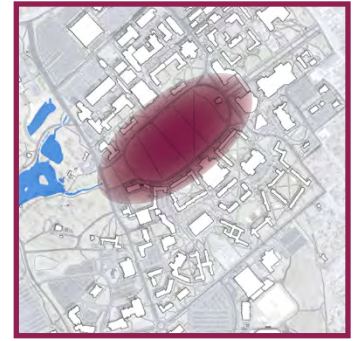
1.	DERRING + G. BURKE JOHNSTON STEPS	\$850,000
2a.	DRILLFIELD TRAILHEAD #1 (DRILLFIELD SIDE)	\$350,000
2b.	DRILLFIELD TRAILHEAD #1 (WAR MEMORIAL GYM PLAZA)	\$425,000
3.	DRILLFIELD TRAILHEAD #2 - MCBRYDE HALL	\$275,000
4.	HILLCREST CROSSWALK	\$125,000
5.	DAVIDSON PEDESTRIAN TRAIL	\$75,000
6a.	LIBRARY PLAZA - PHASE 1	\$450,000
6b.	LIBRARY PLAZA - PHASE 2	\$525,000
7a.	DURHAM + WHITTEMORE NORTH PLAZA	\$1,650,000
7b.	DURHAM + WHITTEMORE SOUTH PLAZA	\$950,000
8.	GATEWAY KIOSKS	\$475,000
9.	VISITORS PAVILION	\$525,000
10.	ROBESON QUAD	\$1,200,000
11.	COWGILL LAWN	\$1,700,000

# DRILLFIELD MASTER PLAN



# Campus Beautification Projects

## DRILLFIELD MASTER PLAN



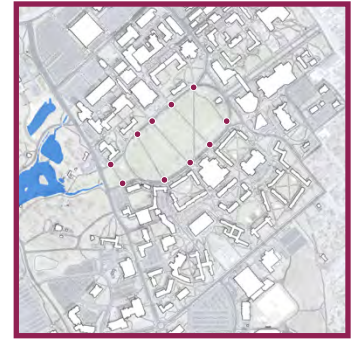
The Virginia Tech Drillfield serves as the center of campus, as well as being the most well known landmark at the university. The visual and spatial character of the Drillfield in its existing condition does not reflect the high quality of the institution that is Virginia Tech. Existing pathways are in poor condition or do not exist at all in a defined manner. Existing turf and grades are poor, landscaping is sparse, parking dominates the visual experience, and there is a lack of seating opportunities to promote collaborative engagement.

Based on an analysis of existing conditions, a master plan was developed as part of an ongoing planning process to raise the quality of the Drillfield experience to a level commensurate with its stature as a campus space. The following series of pages summarizes the key components involved in the Drillfield Master Plan.



# DRILLFIELD MASTER PLAN

## TRAILHEADS



*Improved Site Furnishings and Amenities*

The Trailhead projects are a primary component of the Drillfield Master Plan. The goals of the Trailheads are to enhance the street presence on Drillfield Drive and highlight existing pedestrian entry portals onto the Drillfield. This project series will accomplish its goals by providing more seating opportunities with improved site furnishings and amenities, upgrading pathway materials and light fixtures, enhancing pedestrian safety at crosswalks, and cultivating higher level landscape treatments.



# DRILLFIELD MASTER PLAN PATHS



*Major Path Material Example*

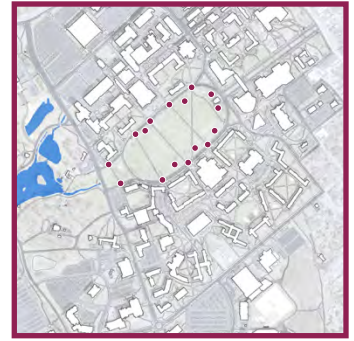


*Minor Path Material Example*

Path material quality is key to improving the overall experience of the Drillfield. Use of varying finishes and material types allows the opportunity to create path hierarchy (major vs. minor paths). A Drillfield Paths Committee is currently leading an investigation that explores, tests, and evaluates all-weather and ADA compliant solutions to paths on the Drillfield, in an effort to enhance the green space aesthetic and multi-use purpose of the iconic Drillfield. At the end of the testing and exploration period, the committee will provide its recommendations for pathway materials.



# DRILLFIELD MASTER PLAN SEATING



*Improved Site Furnishings and Amenities*

While the Trailheads provide seating and amenities at the perimeter, there are opportunities to develop seating pockets on the interior areas of the Drillfield as well. These seating pockets will provide an opportunity for more quiet, 'off-line' seating, located away from paths and crossing points. These are places where collaboration, and 'productive collisions' will occur. Two forms of interior Drillfield seating will be developed - Amphitheater and Plaza seating - and these will vary based mainly on terrain.



*Typical Plaza Area Example*



*Typical Amphitheater Example*



# DRILLFIELD MASTER PLAN LANDSCAPING



*Chapel Area Landscape*

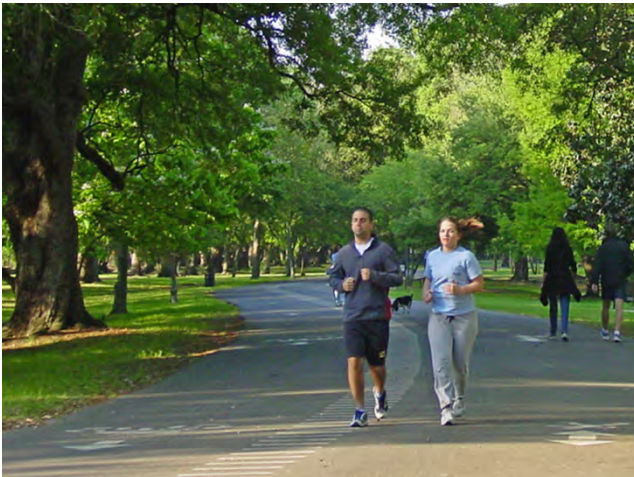
Master plan guidance has promoted an open ground plan at the Drillfield, free from shrubs and other obstructions. However, a series of perimeter landscape areas is proposed to guide pedestrians to the new paths, reduce erosion, and beautify the Drillfield edge. These areas will be developed with a character similar to the existing landscape at the Chapel area.



*Potential Phasing of Landscape Edge*

# DRILLFIELD MASTER PLAN

## *OUTER LOOP RUNNING TRAIL*



*Trail Example*

The Drillfield is a hub of the campus' outdoor recreation. Providing a path along the outer edge of the Drillfield, the Outer Loop Running Trail will provide an opportunity for the community, faculty/staff, and student populations to enjoy the benefits of the open green space without being a hindrance to students on their way to classes, while keeping the open grassy spaces available for other forms of recreation. This space will also provide a safe, continuous trail for those walking and running, separate from the often crowded sidewalks lining the Drillfield. Additionally, the trail can be programmed for special events by the Department of Recreational Sports.



*Potential Location of Outer Loop Running Trail*

# DRILLFIELD MASTER PLAN

## ESTIMATED COSTS



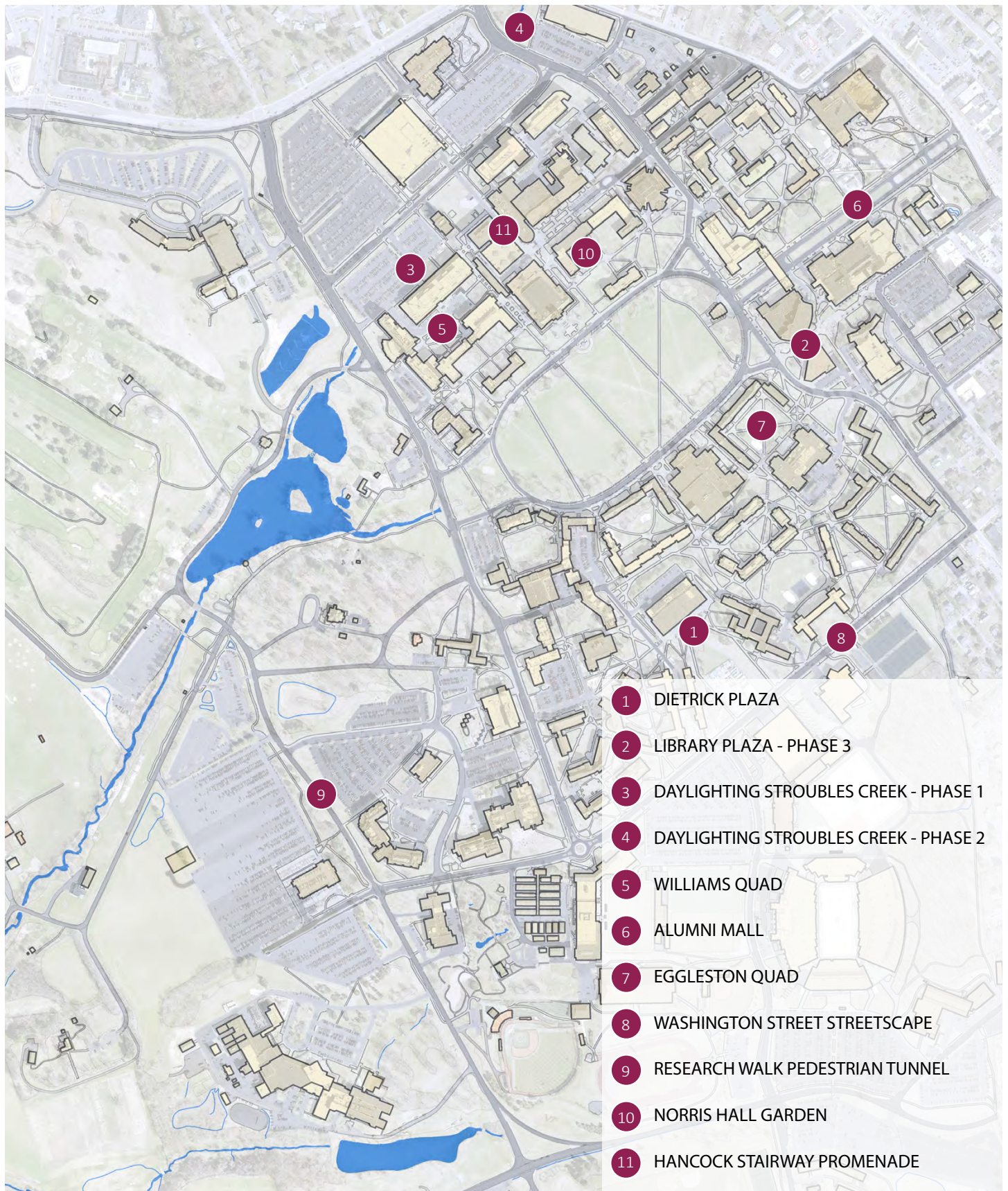
<b>TRAILHEADS</b>	11 @ \$225,000 ea.	<b>\$3,250,000</b>
<b>CROSSWALK PAVING</b>	9 @ \$35,000 ea.	<b>\$450,000</b>
<b>SEATING (TERRACED)</b>	4 @ \$60,000 ea.	<b>\$350,000</b>
<b>SEATING (PLAZA)</b>	5 @ \$100,000 ea.	<b>\$675,000</b>
<b>DRILL FIELD EDGE LANDSCAPE</b>		<b>\$725,000</b>
<b>TRAILS (MAJOR)</b>		<b>\$TBD</b>
<b>TRAILS (MINOR)</b>		<b>\$TBD</b>
<b>TRAILS (OUTER LOOP RUNNING TRAIL)</b>		<b>\$TBD</b>
<b>LIGHTS</b>		<b>\$TBD</b>
<b>TURF RESTORATION</b>		<b>\$TBD</b>
<b>TOTAL</b>		<b>\$TBD</b>



# POTENTIAL PROJECTS

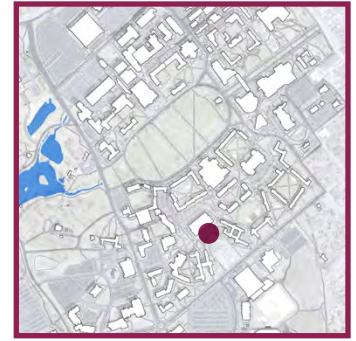
(DESIGN + COSTS TBD)

# POTENTIAL PROJECT LOCATION MAP\*



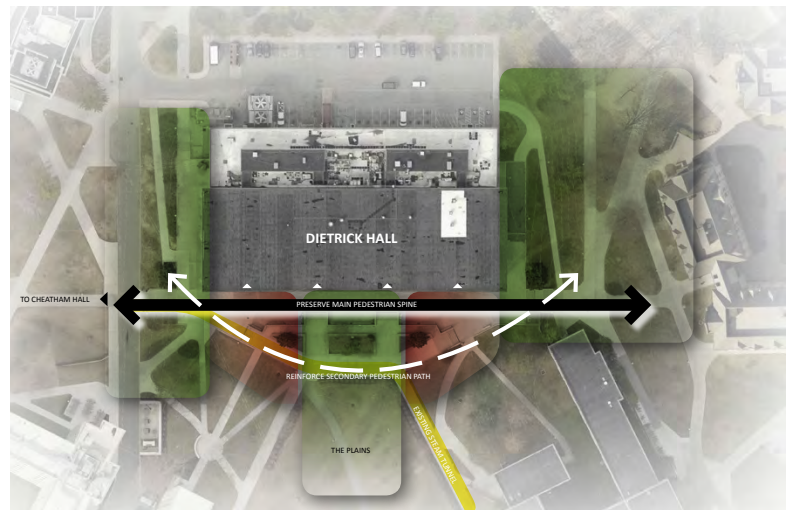
\*No priority listing

# DIETRICK PLAZA

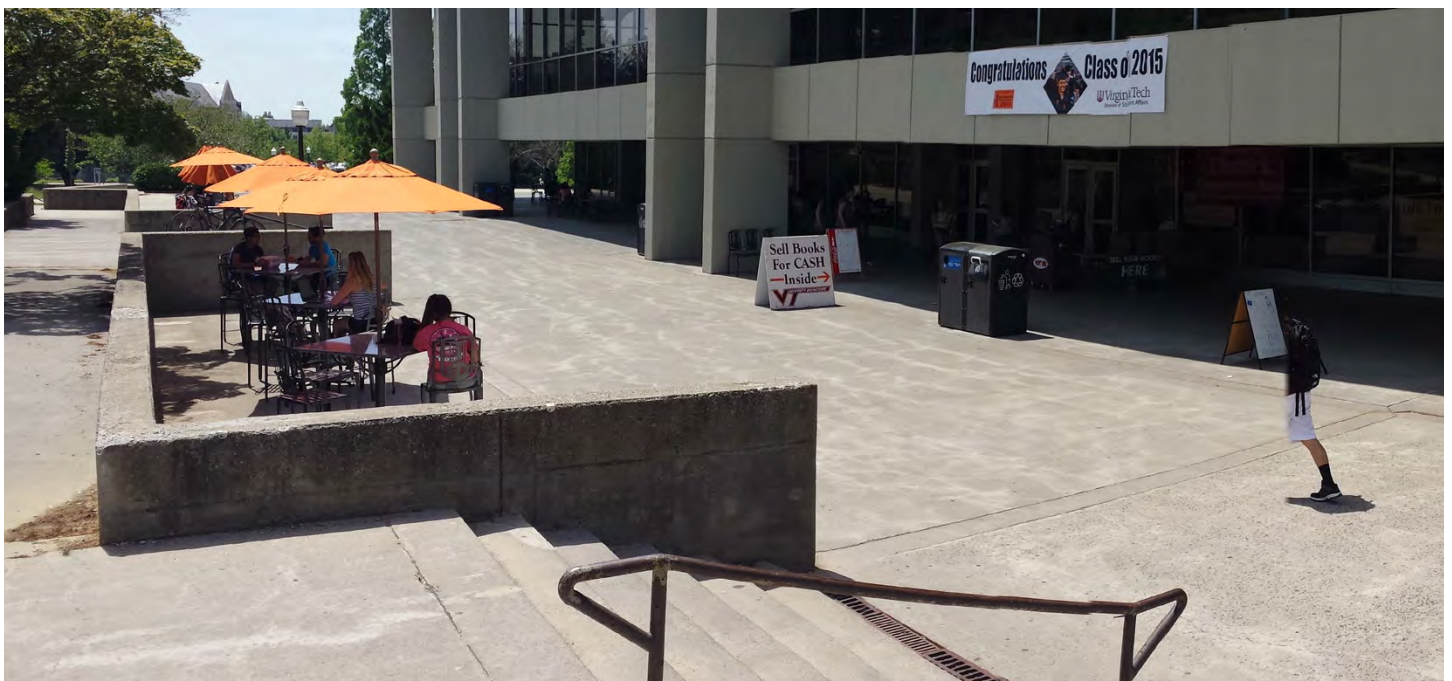


As one of the most highly utilized areas on campus, Dietrick Plaza has many opportunities to be developed into a more inviting and dynamic space:

- *Replace existing paving with higher grade surface treatments*
- *Provide more shade*
- *Provide alternative seating*
- *Create more visual interest*
- *Create a stronger connection to adjacent sections of campus*
- *Utilize wasted space*



Preliminary Concept Diagram



Existing Conditions

# LIBRARY PLAZA (PHASE III)



The Library Plaza concept seeks to capitalize on the success of the streetscape improvements on College Avenue, by enhancing the visual and physical connectivity from downtown Blacksburg to Virginia Tech's campus. Phase Three will aim to:

- *Replace existing paving with higher grade surface treatments*
- *Expand on previous phases*
- *Improve pedestrian connection to Drillfield*
- *Improve entrances to Library and Bookstore*



Existing Conditions

# DAYLIGHTING STROUBLES CREEK (PHASE I)



Stroubles Creek has been identified as an impaired waterway by the State of Virginia. Phase One of this project seeks to improve the overall health of the creek by:

- *Daylighting a section as a way to promote Best Management Practices*
- *Providing a unique space for outdoor education*



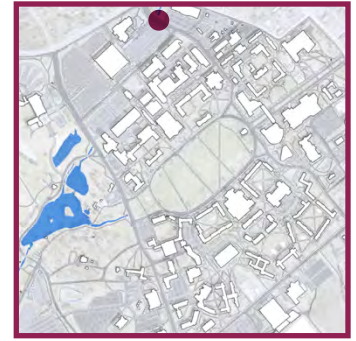
Precedent Image - VMware Headquarters, Palo Alto CA



Precedent Image - Tanner Springs Park, Portland OR



# DAYLIGHTING STROUBLES CREEK (PHASE II)



Stroubles Creek has been identified as an impaired waterway by the State of Virginia. Phase Two of this project seeks to improve the overall health of the creek and establish a greater street presence by:

- *Daylighting a section as a way to promote Best Management Practices*
- *Creating an entry feature to this section of campus*



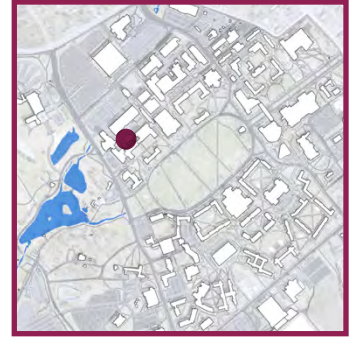
*Existing Conditions*



*Entry Feature Example*

# Campus Beautification Projects

## WILLIAMS QUAD



Williams Quad is a highly used academic quad with potential to capture the Virginia Tech experience by:

- *Providing higher quality landscape and surface treatments*
- *Providing seating and amenities that promote greater social engagement*



*Existing Conditions*

# ALUMNI MALL



Alumni Mall is the ceremonial entrance from Main Street in Blacksburg into the Virginia Tech Campus. The potentials for this project are to:

- *Create a positive first impression*
- *Establish the Virginia Tech identity*
- *Interface with the downtown Blacksburg streetscape*



Existing Conditions

# Campus Beautification Projects

## EGGLESTON QUAD



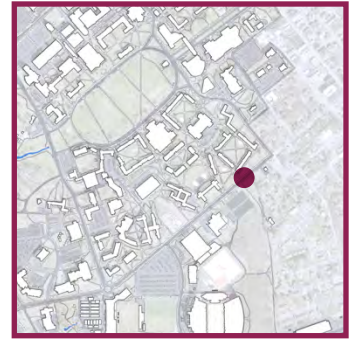
Eggleston Quad is a highly used residential quad with potential to capture the Virginia Tech experience by:

- *Screening maintenance areas*
- *Providing higher quality landscape and surface treatments*
- *Providing seating and amenities that promote greater social engagement*



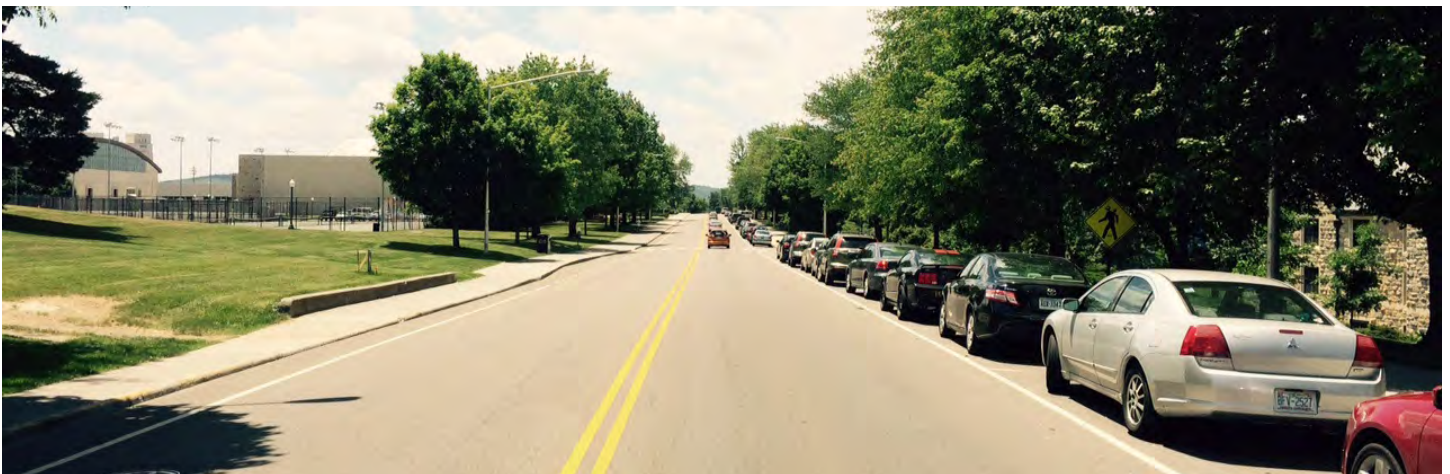
*Existing Conditions*

# WASHINGTON STREET STREETScape



Washington Street is a primary vehicular corridor on campus. The main goal for this project is to create a positive first impression for visitors to the Virginia Tech Campus who enter on this corridor. This experience can be enhanced by:

- *Highlighting prominent architecture*
- *Framing views to other sections of campus*
- *Utilizing features from successful streetscape precedents*



Existing Conditions - Washington Street (Facing West)



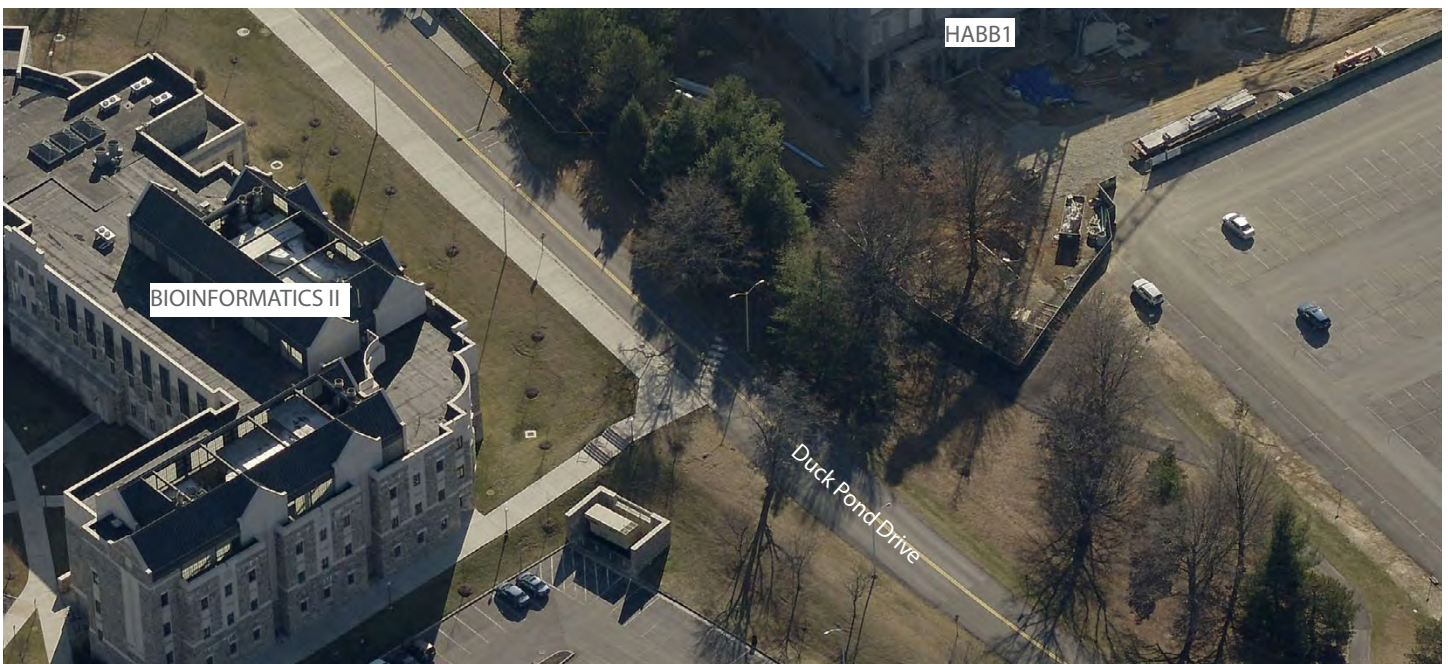
Existing Conditions - Washington Street (Facing East)

# RESEARCH WALK PEDESTRIAN TUNNEL

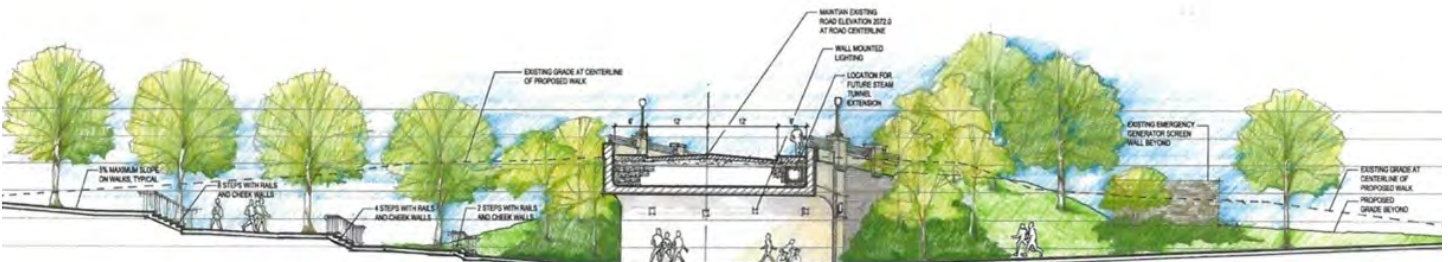


The Pedestrian Tunnel, as a part of the Research Walk, plans to safely connect campus users from the Life Science Precinct to Virginia Tech's main campus. The key attributes of this project aim to:

- Create a physical separation between pedestrian and vehicular traffic
- Develop a gateway connection from the Academic Core to the Life Science Precinct
- Promote opportunities to develop socially charged public spaces



Existing Conditions



Proposed Tunnel - Section

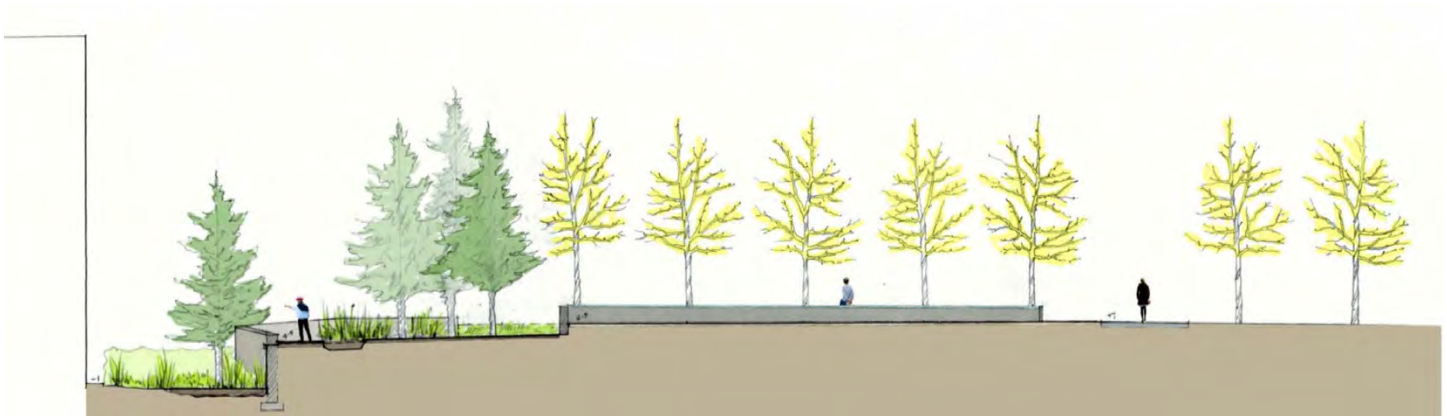
# Campus Beautification Projects

## NORRIS HALL GARDEN

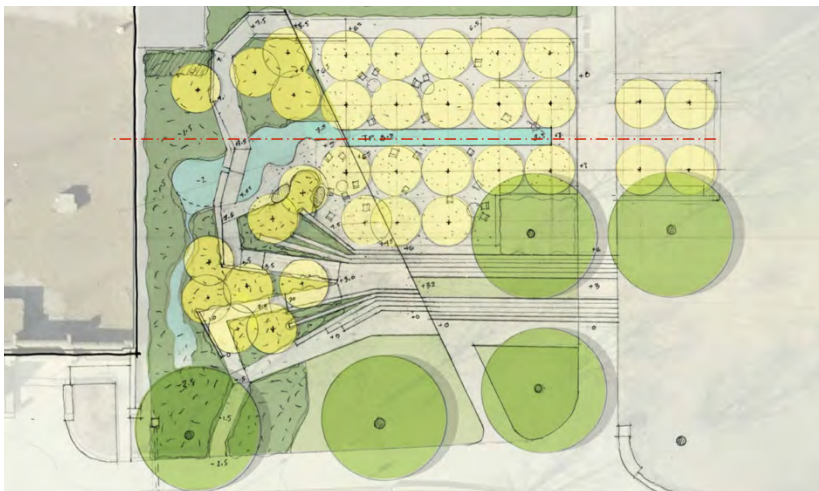


The Norris Hall Garden seeks to implement a contemplative space in an otherwise under-utilized area of campus. It will accomplish this by:

- Providing a peaceful setting with ample shade and a water feature
- Ensuring universal accessibility
- Providing a combination of fixed and movable site furnishings
- Promoting Green Infrastructure with a significant rain garden element



Proposed Concept Section

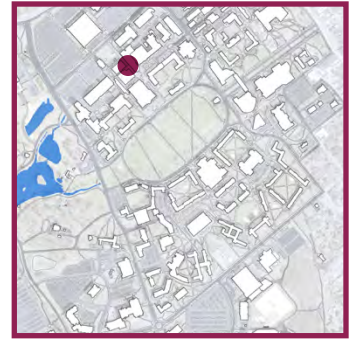


Proposed Concept Plan



Precedent Image

# HANCOCK STAIRWAY PROMENADE



The Hancock Stairway is currently an active thoroughfare and a 'pinch point' due to its high level of pedestrian traffic. As the Multi-Modal Transit Facility finishes, this stairway will see a surge in use - as pedestrians use this corridor to traffic between transit and their destination. A design to meet the traffic need and enhance the experience seeks to do this by:

- *Opening the staircase base to create a more welcoming entry*
- *Expanding the amount of walking space and daylight, with an open promenade*
- *Introducing a small level of seating in the outdoor promenade*
- *Reducing the utilitarian feel of the space by adding greenery and shielding loading dock from view*



Early Proposed Concept



Existing Conditions



# Campus Beautification Projects

## CONTACT INFORMATION

This document represents the dynamic and ongoing growth of the Virginia Tech campus, and will be updated frequently in order to reflect the most recent developments.

If you have questions, comments, or concerns, please feel free to contact us:

**Jason Soileau**  
**Assistant Vice President**

*Office of University Planning*  
Sterrett Center, STE 48, Virginia Tech  
230 Sterrett Drive  
Blacksburg, VA 24061  
(540) 231-2400

**Matt Gart**  
**Campus Landscape Architect**

*Office of University Planning*  
Sterrett Center, STE 48, Virginia Tech  
230 Sterrett Drive  
Blacksburg, VA 24061  
(540) 231-4186

**Jack Rosenberger**  
**Site Planner**

*Office of University Planning*  
Sterrett Center, STE 48, Virginia Tech  
230 Sterrett Drive  
Blacksburg, VA 24061  
(540) 231-1844