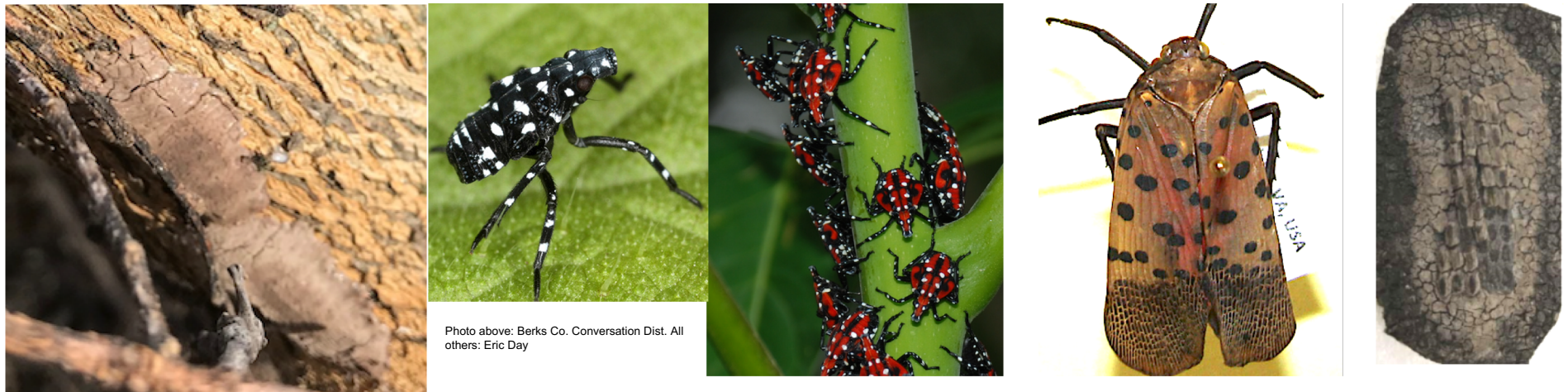


Spotted Lanternfly Lifecycle in Virginia

ENTO-268NP

Prepared by Eric Day, Theresa Dellinger and Linda Melton

The Spotted Lanternfly (SLF) overwinters in an egg mass (gray bars) that starts out shiny gray and quickly turns to a dull brownish gray. The eggs hatch in late April or early May and the immatures or nymphs (red bars) are present until late July when the adults (yellow bars) emerge. Adults lay eggs in the fall. The life stages can overlap and depending on the time of year, multiple stages can be found at the same time.



Eggs

Nymphs

Adults

Eggs

