

THESIS SUBMITTED TO THE FACULTY OF
VIRGINIA POLYTECHNIC INSTITUTE
AND STATE UNIVERSITY
IN PARTIAL FULFILLMENT OF THE DEGREE OF

MASTER OF ARCHITECTURE
IN
ARCHITECTURE

JAAH HOLT, CHAIR

SUSAN C. PIEDMONT-PALLADINO

PAUL F. EMMONS

OCTOBER 30, 2009
ALEXANDRIA, VIRGINIA

KEYWORDS: BOUNDARY, IN-BETWEEN,
COMMUNITY

LIVE|WORK STUDIOS: A CONTINUATION OF CADY'S ALLEY

RACHEL I. WILLIAMS

ABSTRACT

THE BOUNDARY BETWEEN PUBLIC AND PRIVATE DWELLING PRESENTS A COMPLEX ARCHITECTURAL PROBLEM IN THAT IT MUST PROVIDE SEPARATION AND TRANSITION, EXPOSURE AND ENCLOSURE, PRIVACY AND INTERACTION, AND EMBODIMENT AND ORIENTATION. THIS THESIS EXPLORES THIS BOUNDARY AND ITS ROLE IN DEVELOPING A SENSE OF COMMUNITY IN THE CONTEXT OF ARTIST LIVE/WORK STUDIOS IN A DENSE URBAN BLOCK.

GENERAL AUDIENCE

ABSTRACT

THIS THESIS EXPLORES THE PHYSICAL BOUNDARY BETWEEN PUBLIC AND PRIVATE SPACE AND HOW ARCHITECTURAL ELEMENTS CAN HELP TRANSITION THE SPACES TO CREATE A BETTER CONNECTION BETWEEN INDIVIDUALS AND THEIR COMMUNITIES, RESULTING IN STRONGER COMMUNITIES. THIS CONCEPT IS EXPLORED IN THE CONTEXT OF ARTIST LIVE/WORK STUDIOS WHERE YOU HAVE PRIVATE RESIDENCES OVERLAPPING MORE PUBLIC WORK AND DISPLAY AREAS.

CONTENTS

INTRODUCTION	1
SITE	2
PROGRAM	6
IMPLEMENTATION	7
IMAGE CREDITS	29

INTRODUCTION

THE BOUNDARY IS BOTH AN ENTRY AND AN EXIT, A BEGINNING AND AN END. WHEN MAN LEAVES THE PUBLIC REALM OF THE STREET, HE IMMEDIATELY ENTERS THE PRIVATE REALM ENCLOSED BY OR WITHIN THE BUILT FORM. THE NATURE OF THIS BOUNDARY BETWEEN PUBLIC AND PRIVATE DWELLING REQUIRES A WALL CAPABLE OF SATISFYING ITS CONTRADICTIONARY NEEDS. MAN'S NEED FOR SECURITY IN A PUBLIC PLACE REQUIRES HIGH VISIBILITY WHILE A SENSE OF SECURITY IN A PRIVATE SPACE CAN ONLY BE ACHIEVED BY LIMITING VISIBILITY. MAN'S NEED FOR PROTECTION REQUIRES A SOLID WALL, WHILE HIS MOBILE AND SOCIAL NATURE REQUIRES A PERMEABLE WALL PROMOTING MOVEMENT AND INTERACTION BETWEEN THE TWO MODES OF DWELLING. SINCE MAN'S MOST FUNDAMENTAL NEED IS FOR PROTECTION FROM THE ELEMENTS, IT IS THE PRIORITY. AS A RESULT OF THE SOLIDITY NECESSARY TO ACCOMMODATE THIS BASIC NEED, ALL OTHER NEEDS AND THE RELATIONSHIP BETWEEN THE TWO ZONES OF DWELLING MUST BE EXPRESSED THROUGH THE TREATMENT OF THE OPENINGS IN THE WALL.

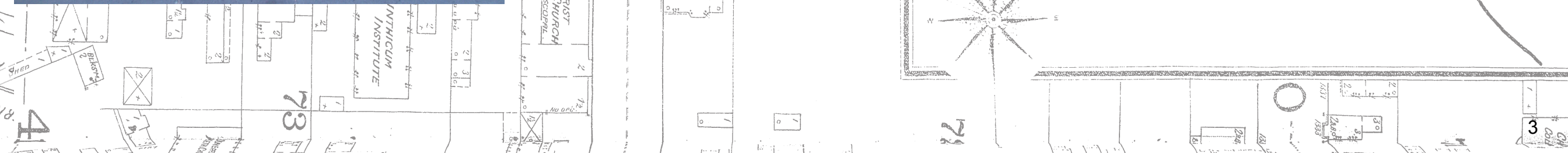
THE BOUNDARY IS A COMPLEX ELEMENT FOR WHICH THERE IS NO DEFINITE ARCHITECTURAL SOLUTION. ITS UNIQUE ABILITY TO DIVIDE BOTH GEOGRAPHIC SPACE AND SOCIAL VALUES HAS MADE IT A TOPIC OF MUCH INTEREST FOR ARCHITECTS AND PLANNERS, BOTH ANCIENT AND MODERN, LOOKING TO CREATE AN IMAGE FOR A CITY. THE BOUNDARY BETWEEN PUBLIC AND PRIVATE DWELLING PRESENTS ARCHITECTS WITH A COMPLEX ARCHITECTURAL PROBLEM IN THAT IT MUST PROVIDE SEPARATION AND TRANSITION, EXPOSURE AND ENCLOSURE, PRIVACY AND INTERACTION, AND EMBODIMENT AND ORIENTATION. ATTEMPTING TO RESOLVE THESE CONTRADICTIONARY CHARACTERISTICS, THE BOUNDARY HAS BEEN INTERPRETED BY ARCHITECTS AND PLANNERS THROUGHOUT THE CENTURIES IN MANY DIFFERENT WAYS INCLUDING WALL, THRESHOLD OR 'IN-BETWEEN' SPACE, AND ALSO AS PRESENCE.

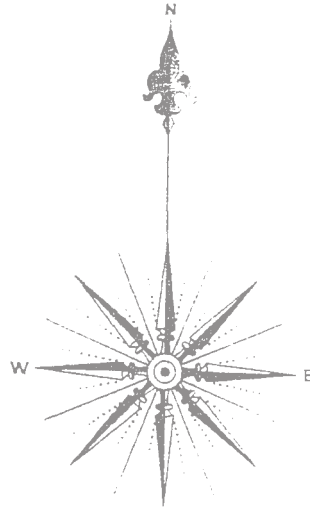
THIS PROJECT STUDIES THE BOUNDARY BETWEEN PUBLIC AND PRIVATE AS AN OCCUPIABLE IN-BETWEEN SPACE. MATERIALS ARE ASSIGNED TO EACH REALM AND THEN BLENDED BY FORM IN THE IN-BETWEEN SPACE. THE IDEA IS TO MAINTAIN THE PUBLIC AND PRIVATE REALMS AS SEPARATE ENTITIES WHILE PROVIDING A PROPER TRANSITION BETWEEN THEM THAT EMBODIES MAN'S DUAL NATURE (PRIVATE AND PUBLIC SELF) AND CONNECTS THE INDIVIDUAL TO THE COMMUNITY.



CADY'S ALLEY GEORGETOWN, WASHINGTON D.C.

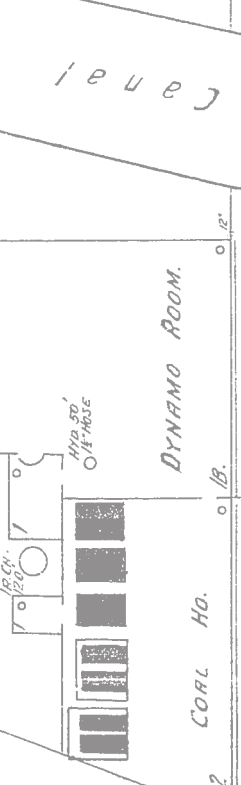
project site



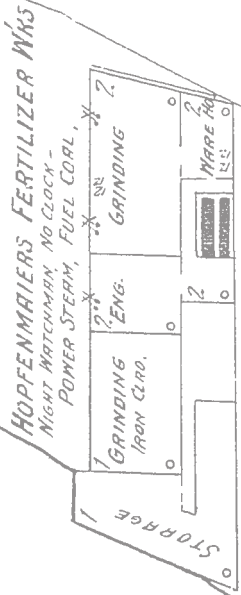


34TH ST

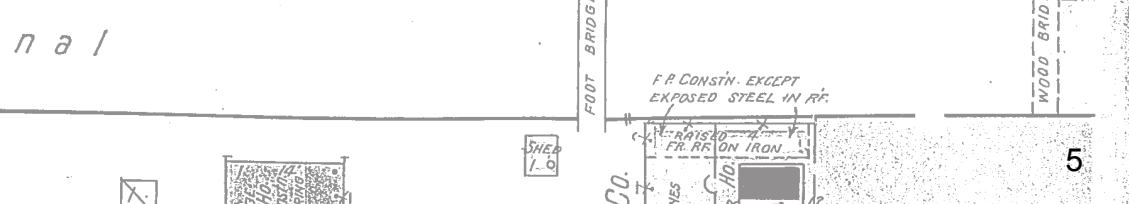
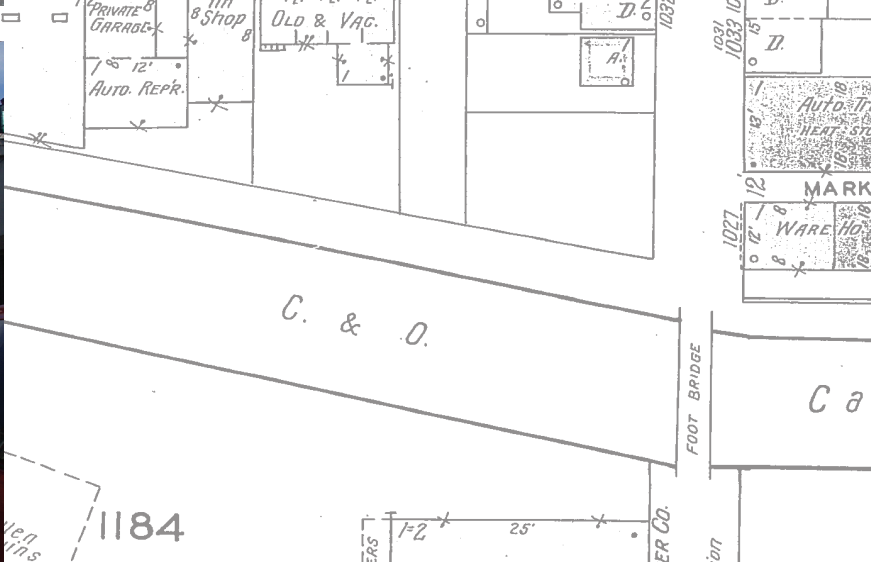
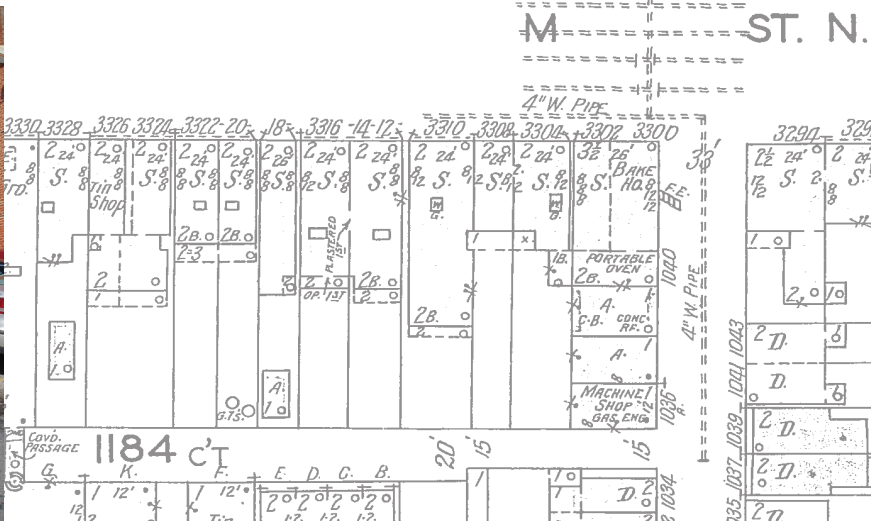
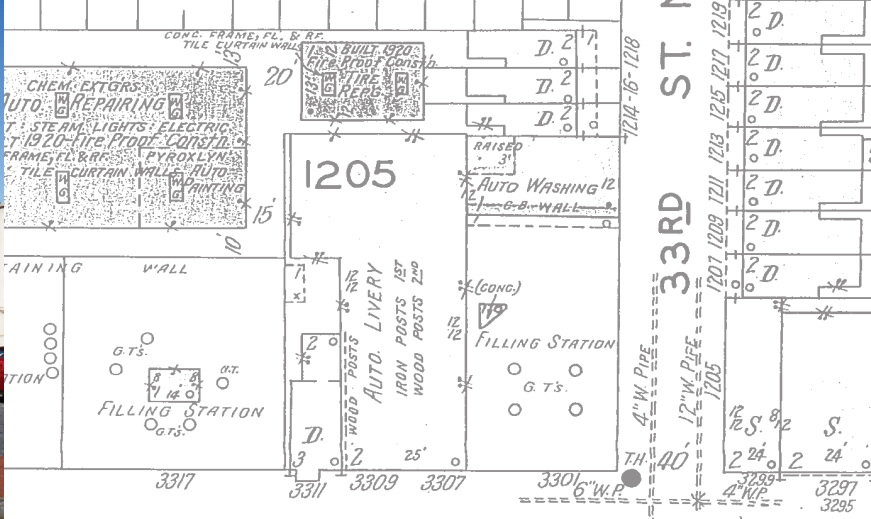
184



1177



BEATTY'S ALLEY



PROGRAM

PUBLIC GALLERY

OUTDOOR PUBLIC SPACE

COMMUNITY STUDIOS

PRIVATE STUDIOS

PRIVATE RESIDENCES

M STREET

EXISTING TUNNEL/
ENTRANCE TO SITE

ART GALLERY

ARTIST LIVE/WORK
STUDIOS + COMMUNITY
STUDIOS, UNITS 1-3

ARTIST LIVE/WORK
STUDIOS + COMMUNITY
STUDIOS, UNITS 4-9

OUTDOOR COMMUNITY
SPACE

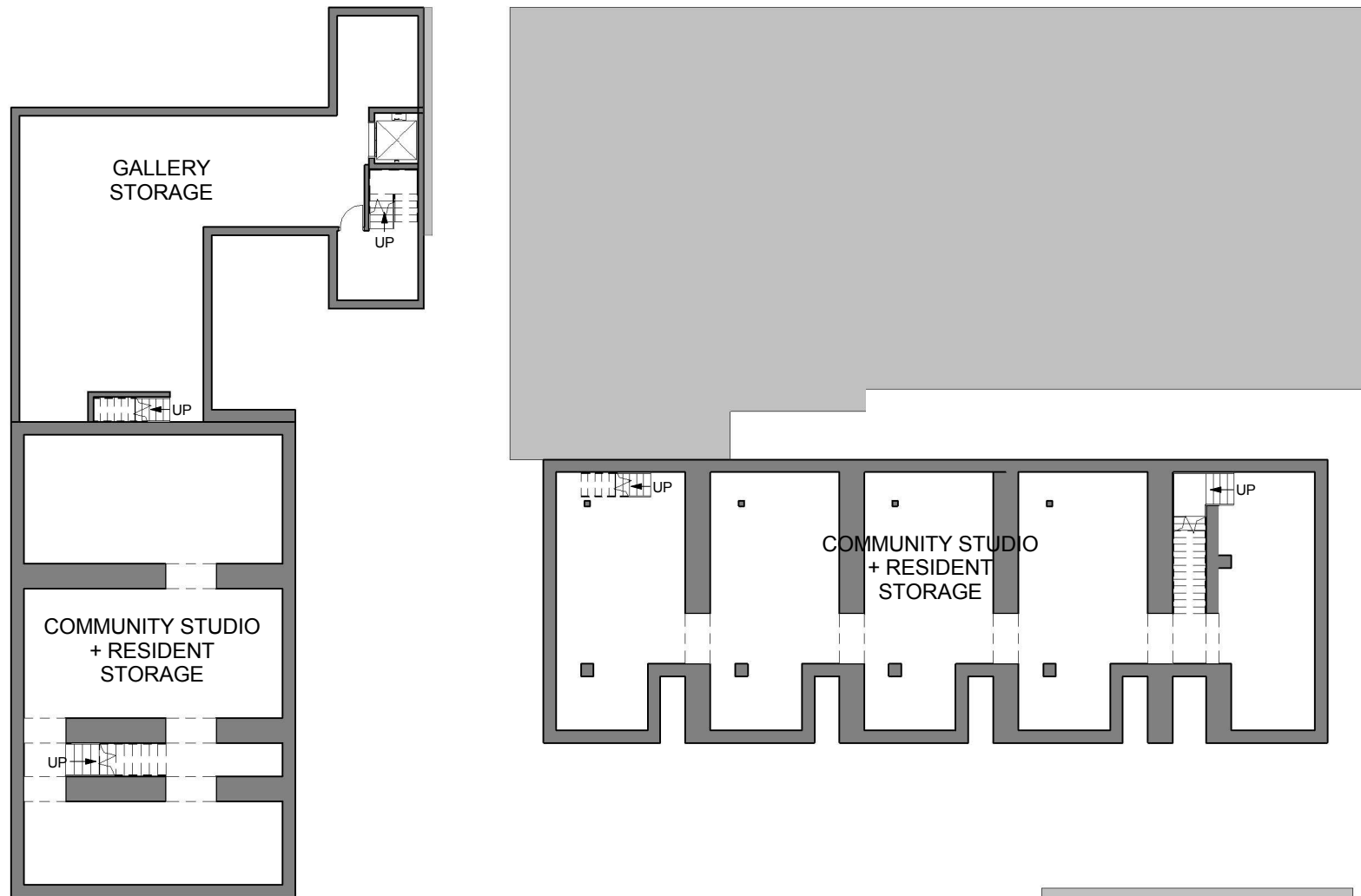
CADY'S ALLEY

SITE PLAN

THE MOST PUBLIC SPACE, THE ART GALLERY, FACES THE HUSTLE AND BUSTLE OF M STREET. BESIDE IT, AN EXISTING TUNNEL FRAMES A VIEW OF THE OUTDOOR COMMUNITY SPACE AS YOU TRANSITION FROM PUBLIC SPACE TO THE SEMI-PUBLIC REALM OF INDIVIDUAL LIVE/WORK STUDIOS AND COMMUNITY STUDIOS. THE OTHER ACCESS POINT TO THE SITE IS THE CONTINUATION OF CADY'S ALLEY. THE COMMUNITY OUTDOOR SPACE SITS AT THE AXIS OF THE TWO MAIN ENTRANCES TO THE SITE AND IS VISIBLE FROM BOTH.

0 5' 10' 20' 40'





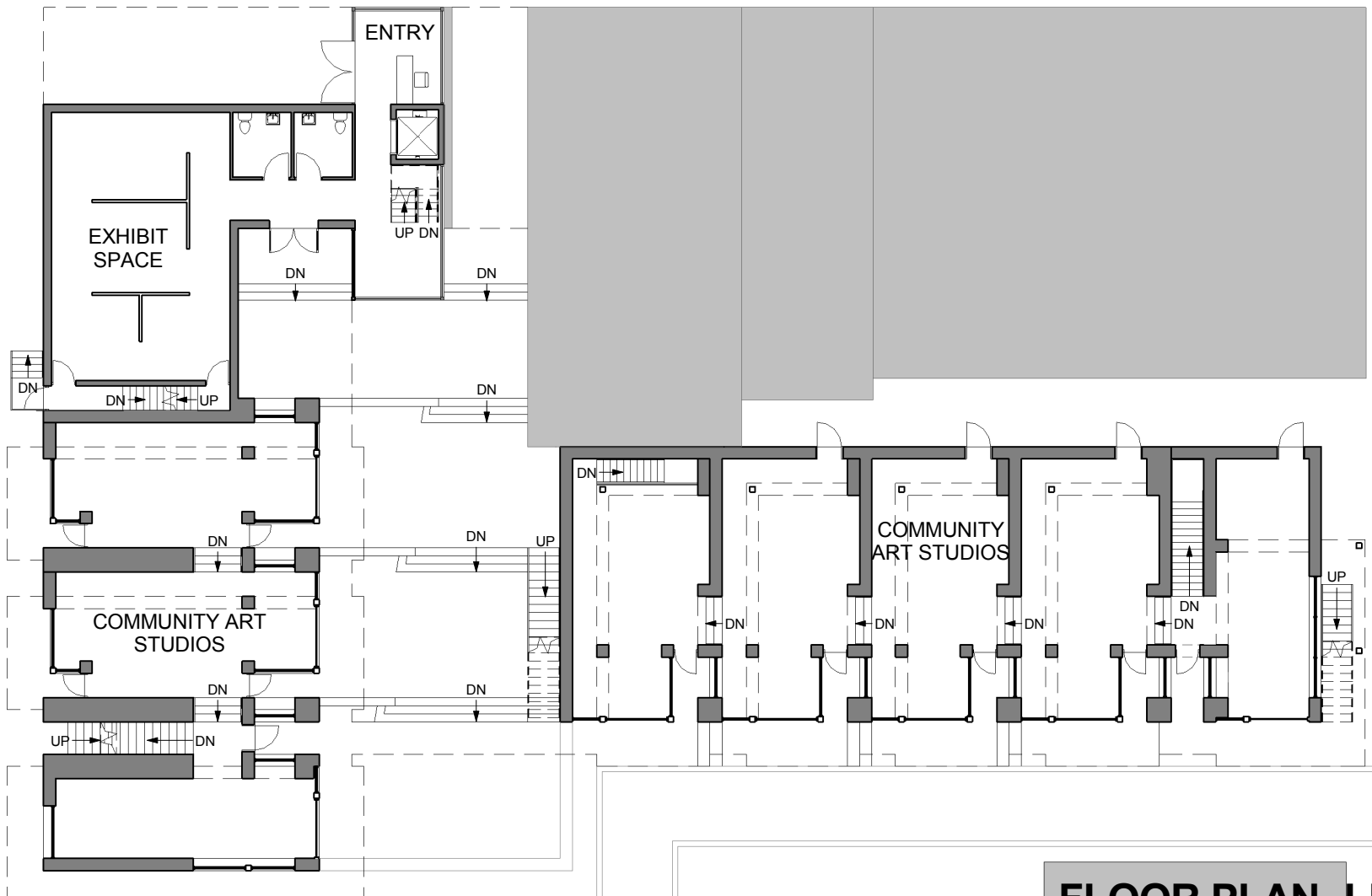
FLOOR PLAN- BASEMENT

STORAGE FOR: COMMUNITY ART STUDIOS
RESIDENTS
ART GALLERY

0 5' 10' 20' 40'

N

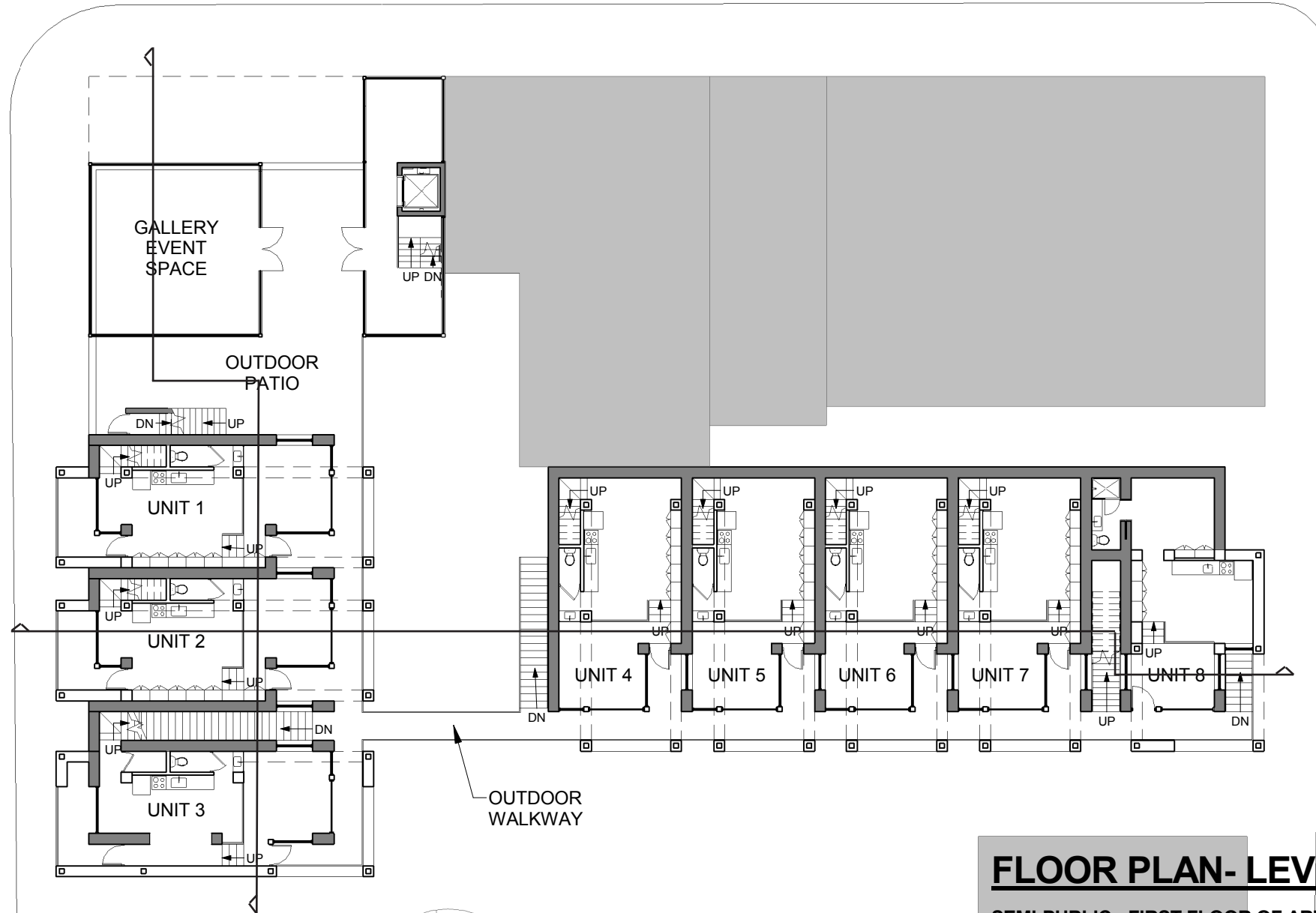
A scale bar at the bottom left of the text block shows increments of 5 feet up to 40 feet. A north arrow is located to the right of the scale bar.



FLOOR PLAN- LEVEL ONE

**PUBLIC: COMMUNITY ART STUDIOS
OUTDOOR COMMUNITY SPACE**





FLOOR PLAN- LEVEL TWO

**SEMI-PUBLIC: FIRST FLOOR OF ARTIST LIVE/WORK
STUDIOS (STUDIO SPACE VISIBLE ALONG
PUBLIC WALKWAY + KITCHEN/DINING AREA)**

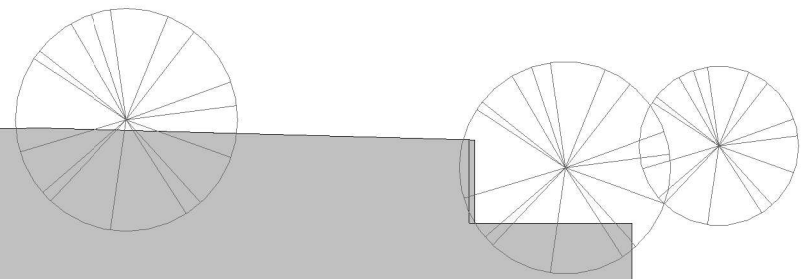
GALLERY EVENT SPACE + OUTDOOR PATIO

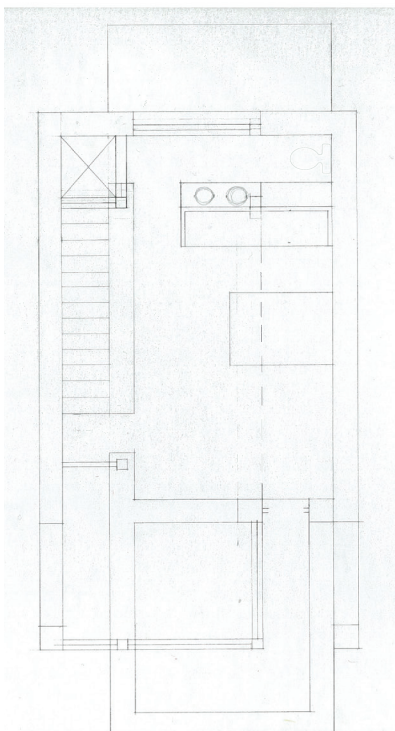




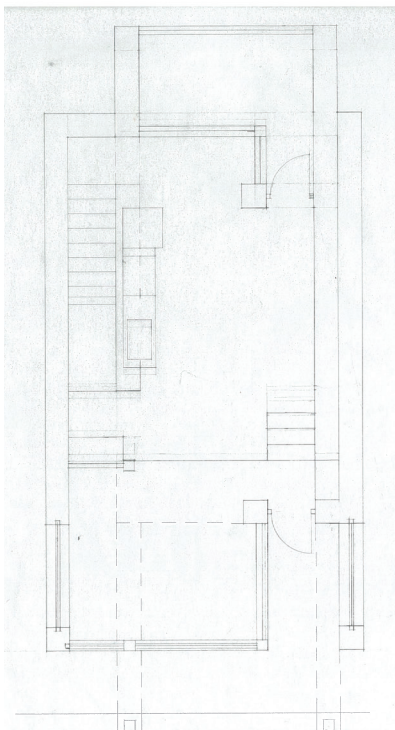
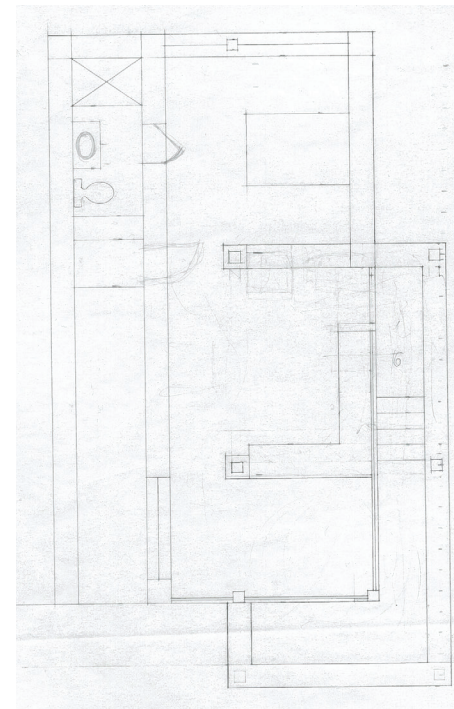
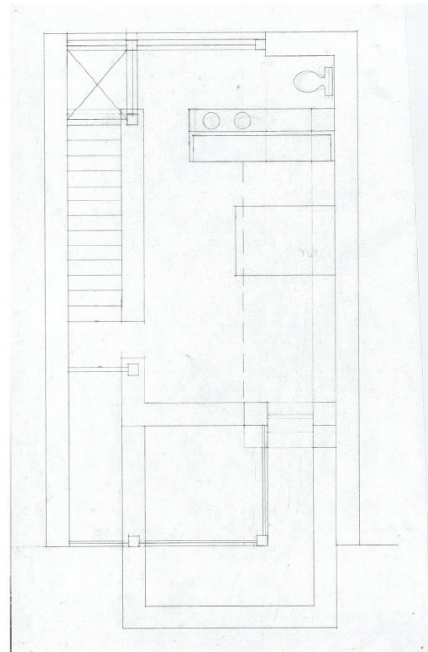
FLOOR PLAN- LEVEL THREE

PRIVATE: SECOND FLOOR OF ARTIST LIVE/WORK STUDIOS
(BEDROOM + BATHROOM + PRIVATE BALCONY)

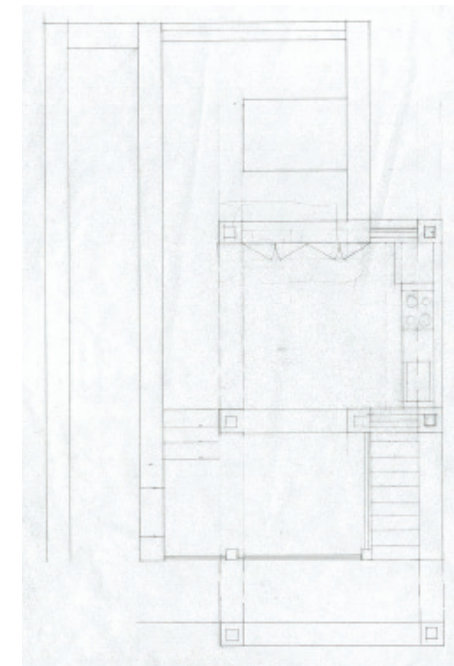
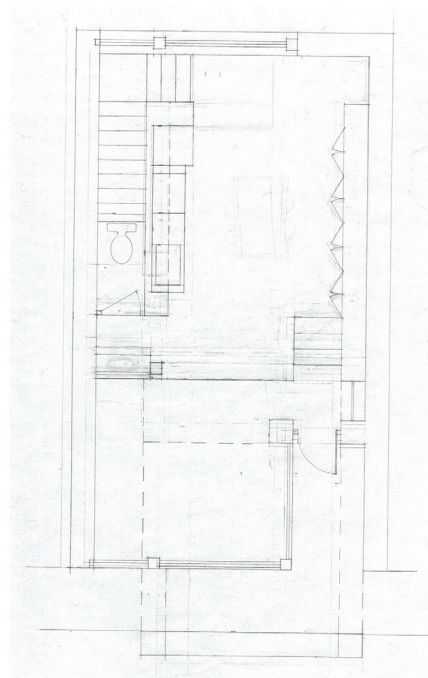




LEVEL THREE



LEVEL TWO



UNIT PLAN STUDIES



ELEVATION - SOUTH



ELEVATION - NORTH
(VIEW FROM M STREET)



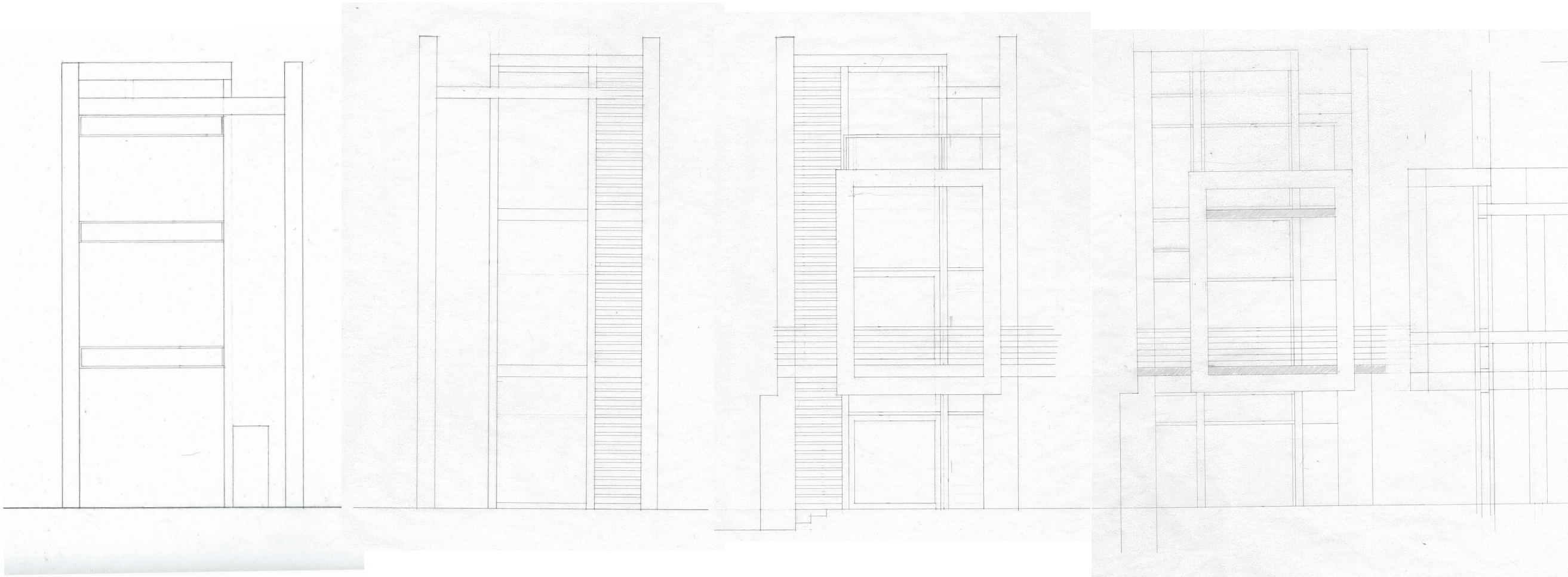
ELEVATION - EAST
(CUT THROUGH EXISTING TUNNEL)



ELEVATION - WEST
(VIEW FROM CADY'S ALLEY)



ELEVATION - EAST



ELEVATION STUDIES

- RESIDENCE ROOF
42' - 6"
- RESIDENCE LEVEL 2
31' - 6"
- RESIDENCE LEVEL 1
20' - 6"
- BOTTOM OF SITE
0' - 0"
- BASEMENT
-8' - 0"



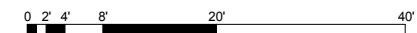
- GALLERY LEVEL 3
30' - 0"
- WALKWAY/GALLERY
LEVEL 2
18' - 0"
- M STREET/GALLERY
LEVEL 1
9' - 0"

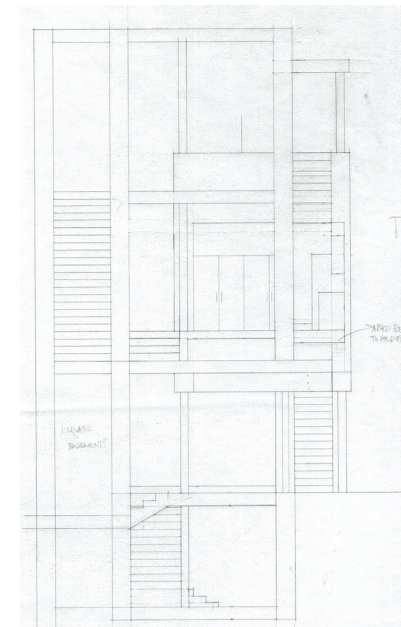
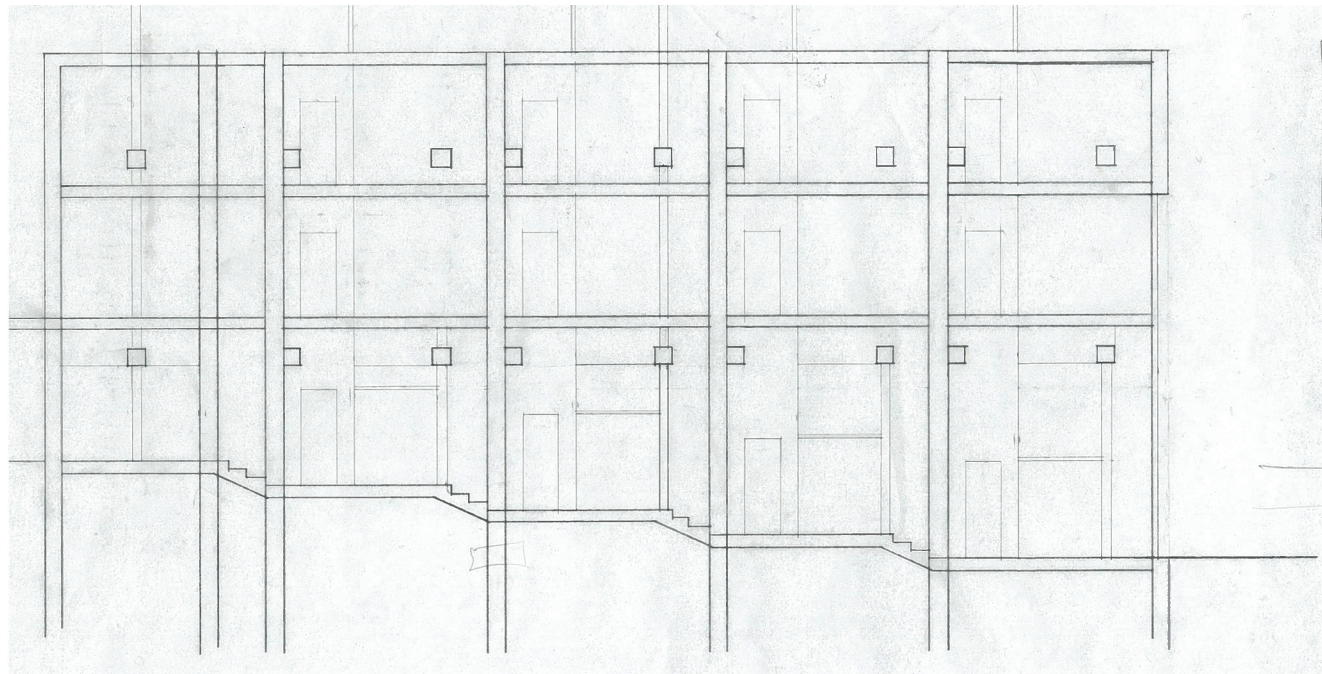
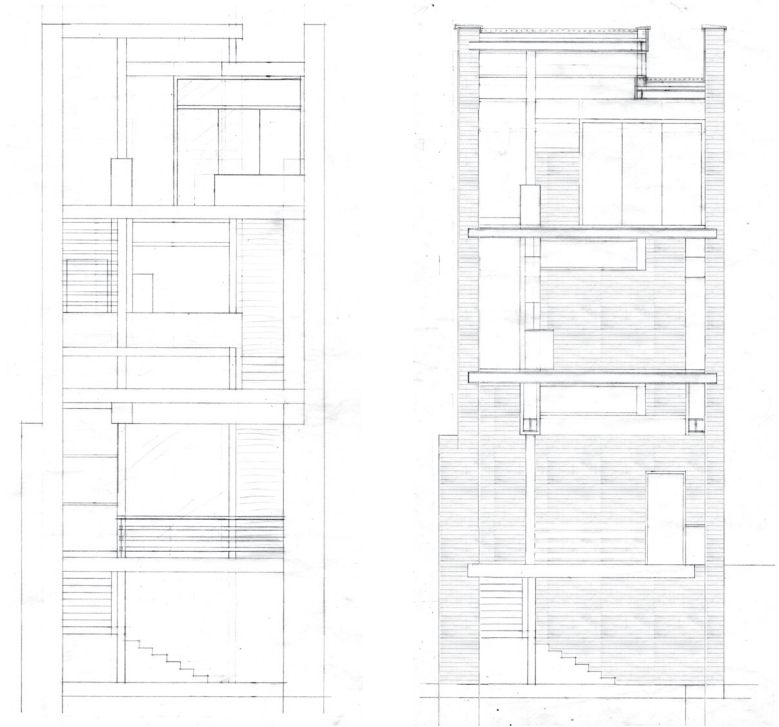
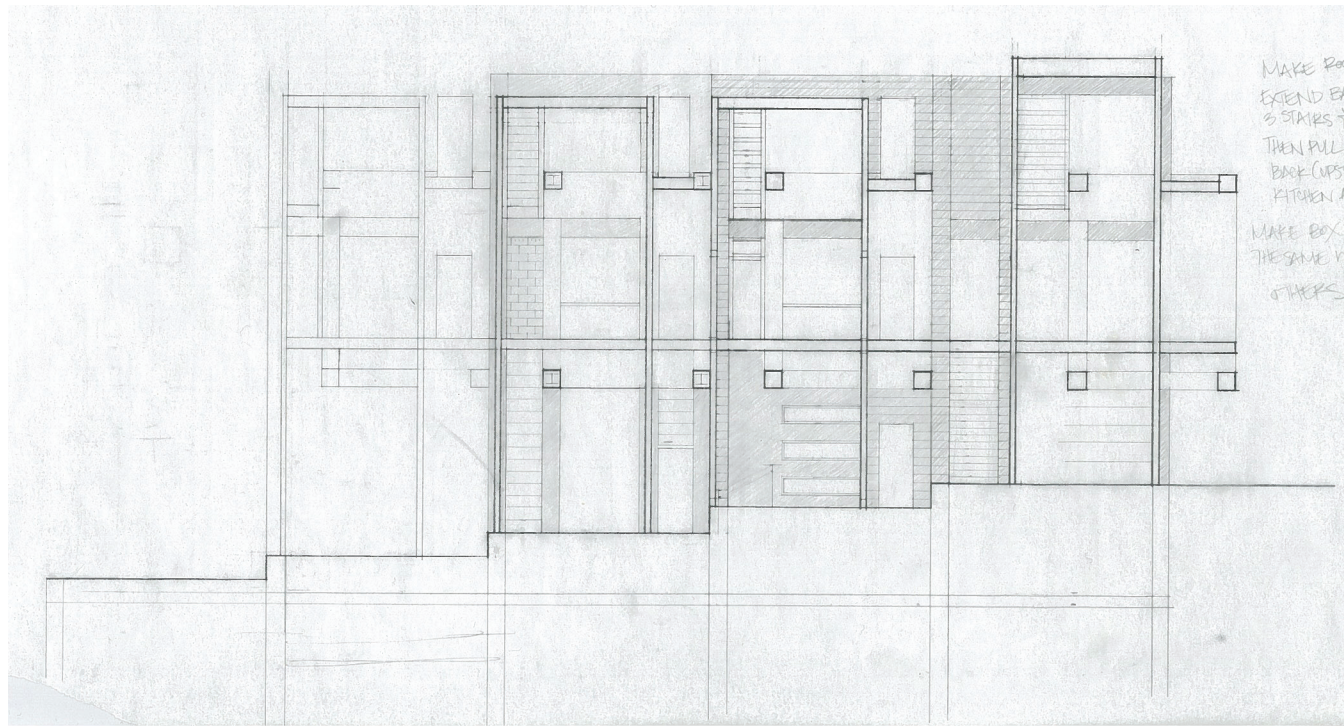
SECTION AT GALLERY, UNITS 1-3



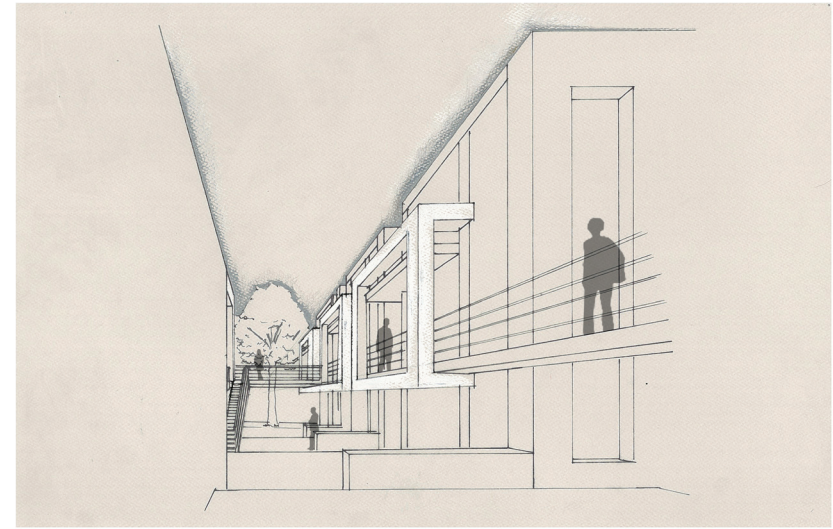
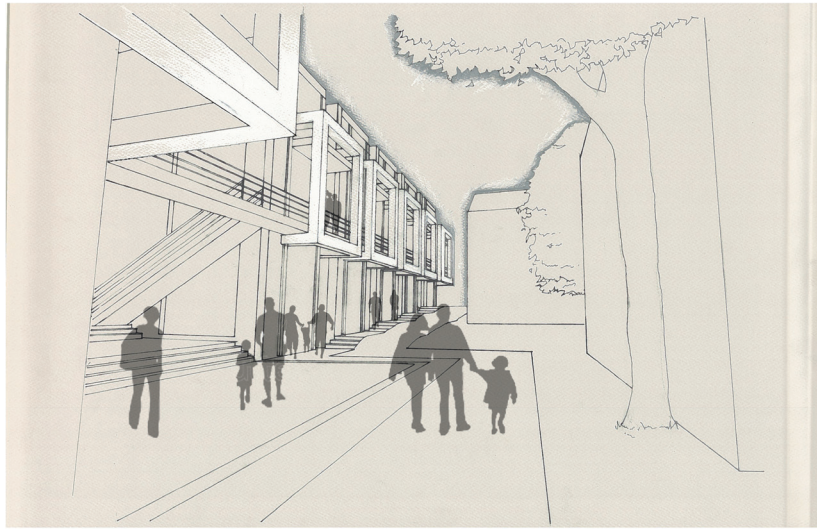
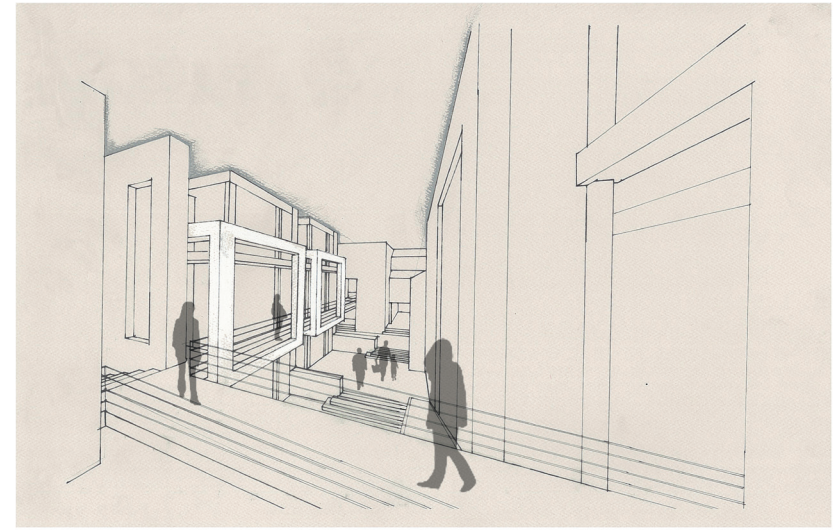
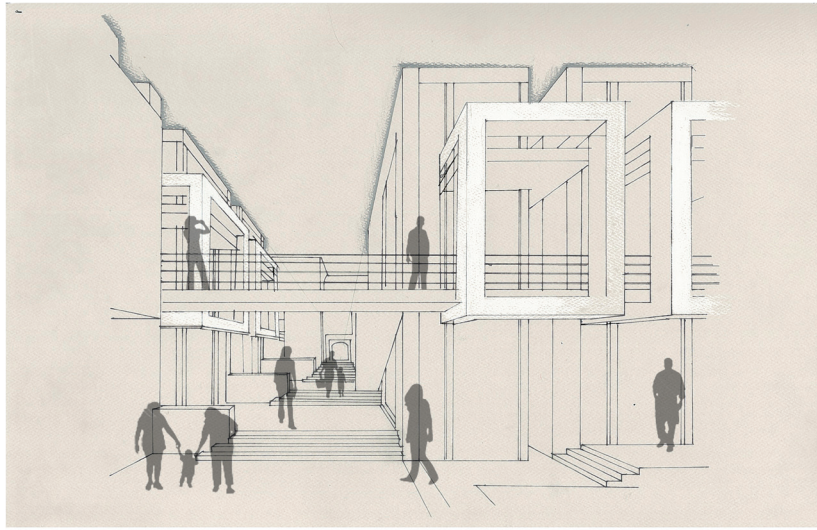
- RESIDENCE ROOF
42' - 6"
- RESIDENCE LEVEL 2
31' - 6"
- WALKWAY/GALLERY
LEVEL 2
18' - 0"
- M STREET/GALLERY
LEVEL 1
9' - 0"
- BOTTOM OF SITE
0' - 0"
- BASEMENT
-8' - 0"

SECTION AT UNITS 2, 4-8

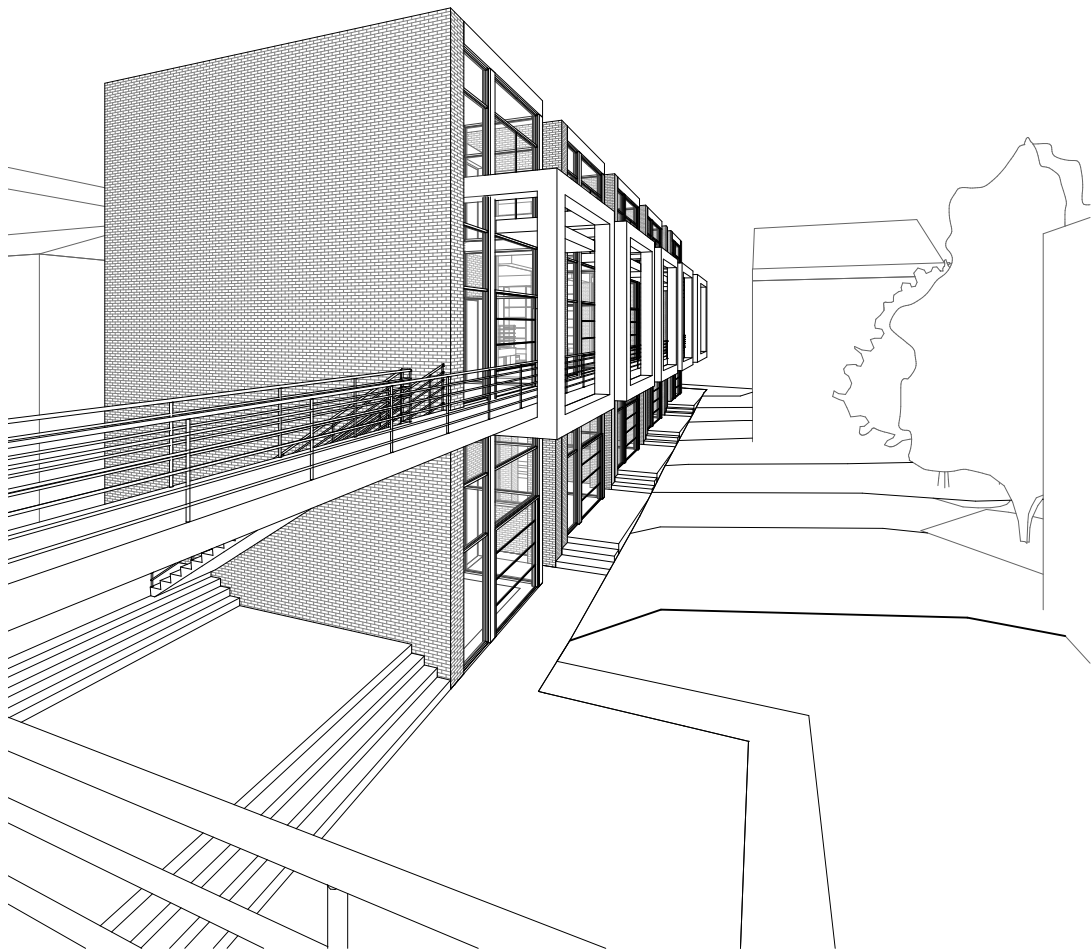




UNIT SECTION STUDIES



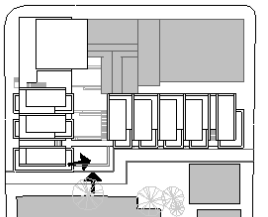
PERSPECTIVES



VIEW FROM LEVEL 2 BALCONY

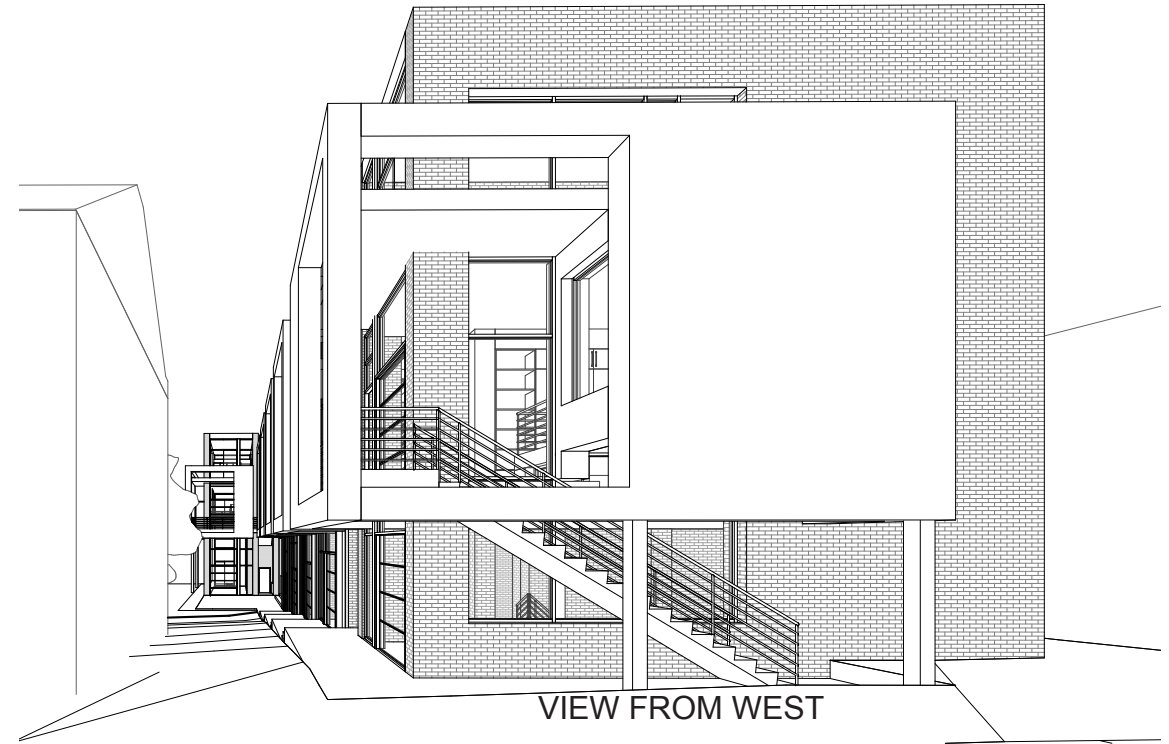
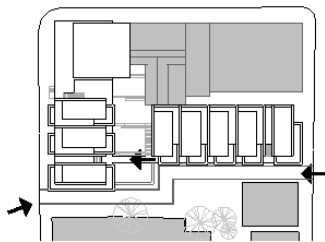


VIEW FROM OUTDOOR SPACE

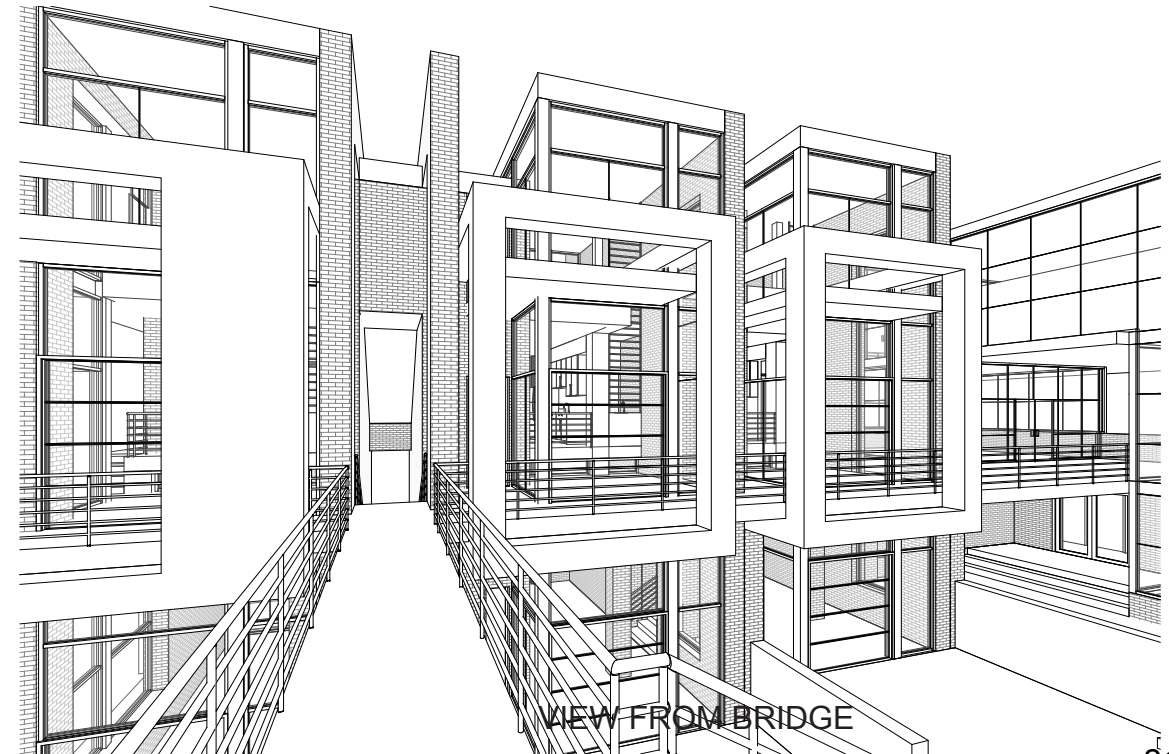




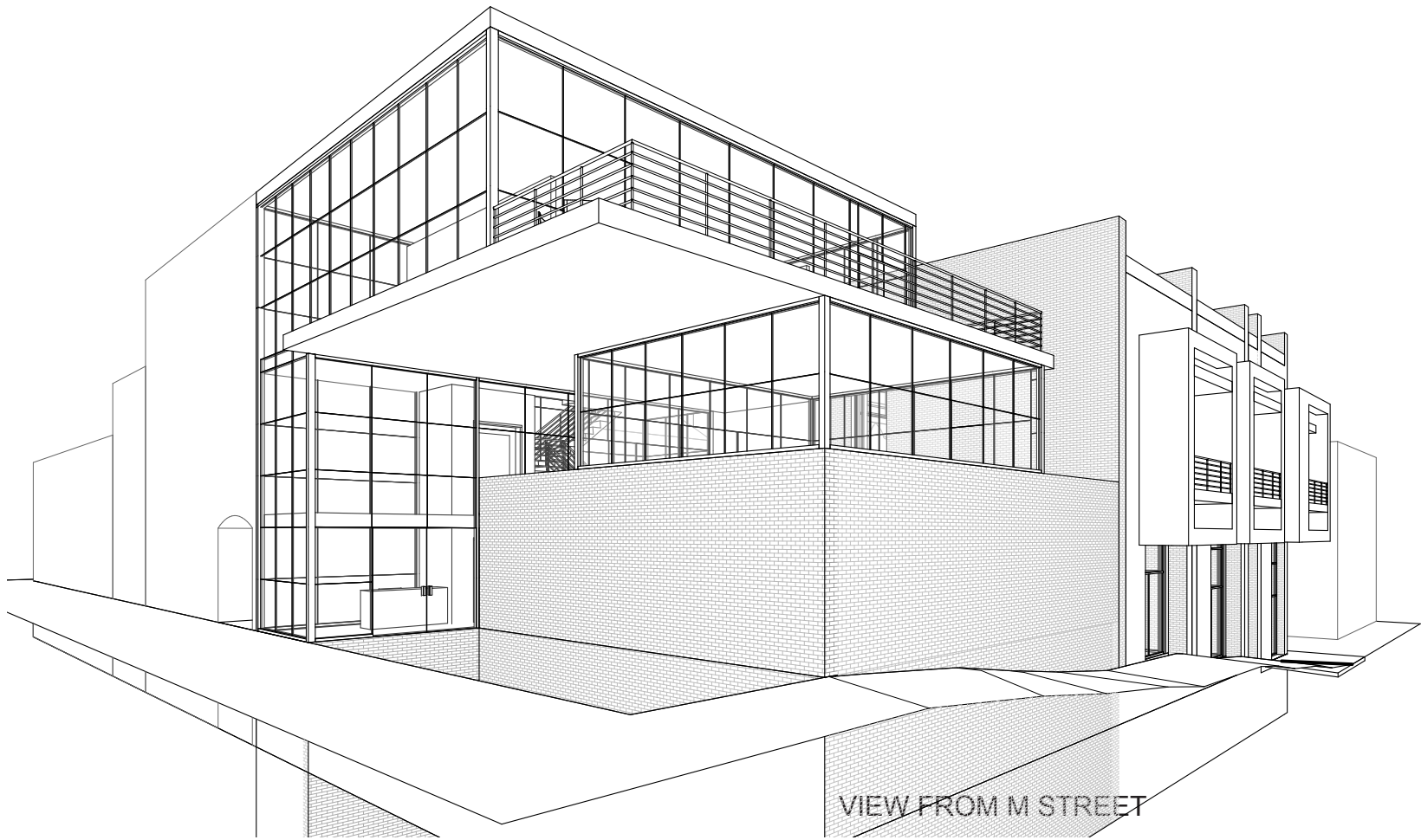
VIEW FROM CADY'S ALLEY



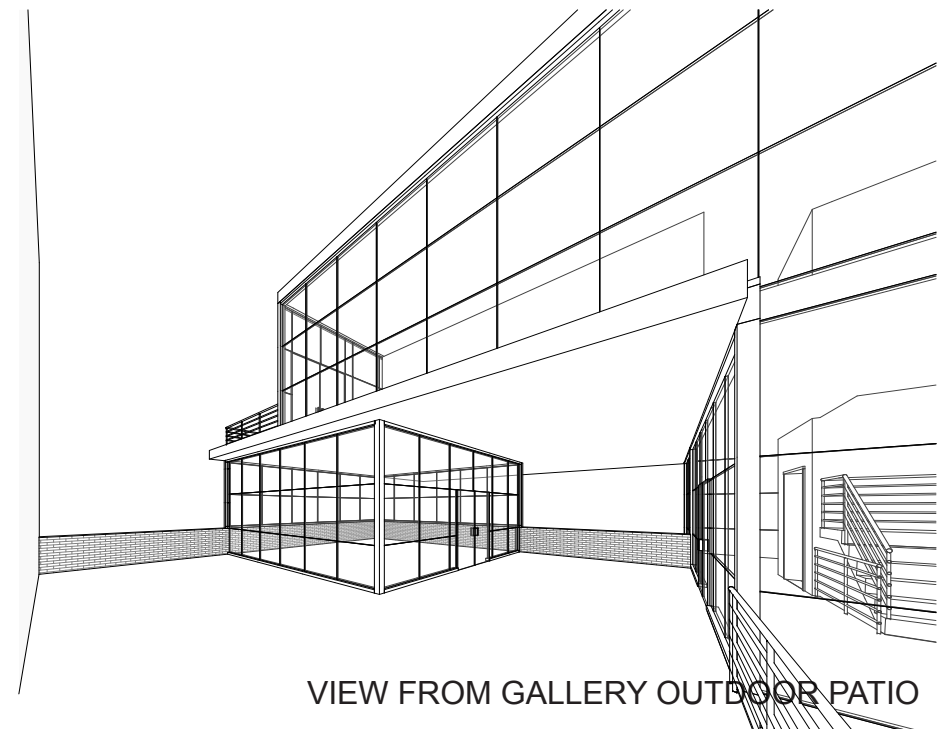
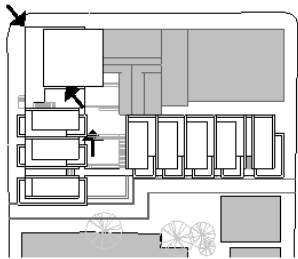
VIEW FROM WEST



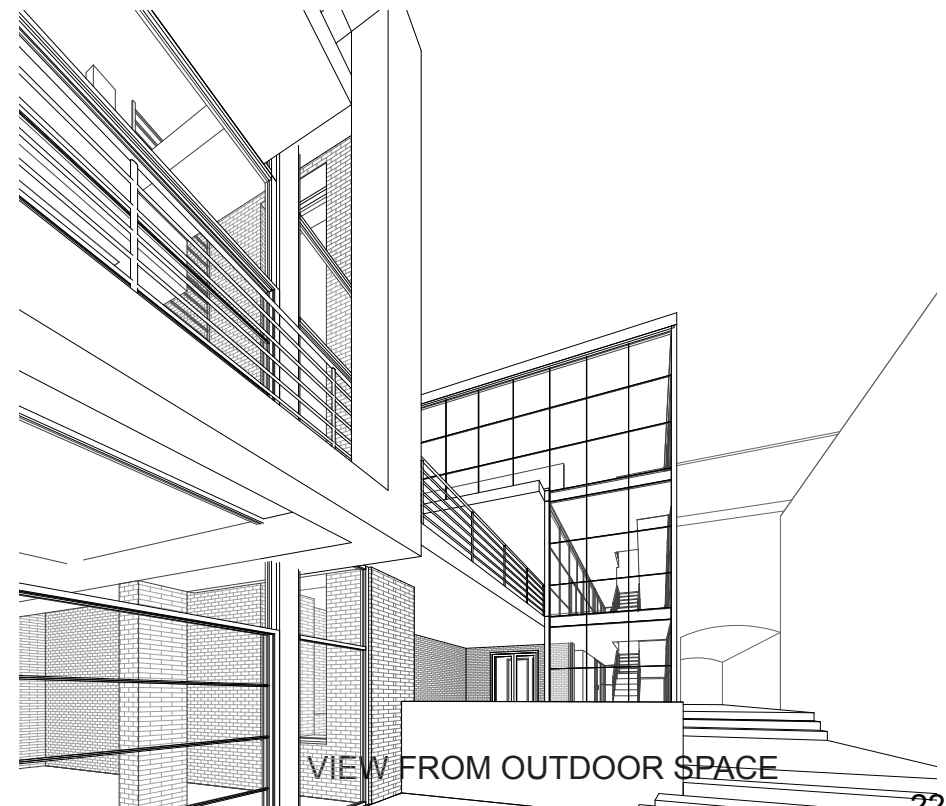
VIEW FROM BRIDGE



VIEW FROM M STREET



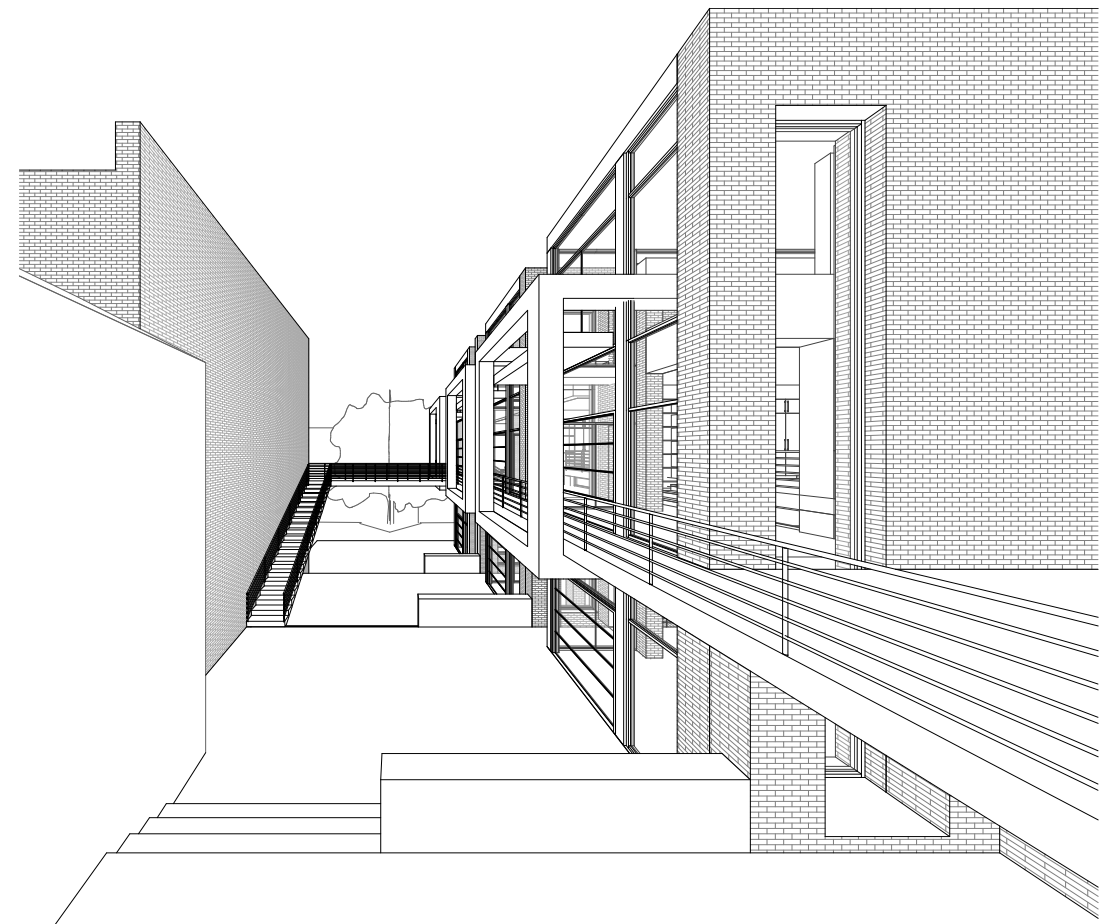
VIEW FROM GALLERY OUTDOOR PATIO



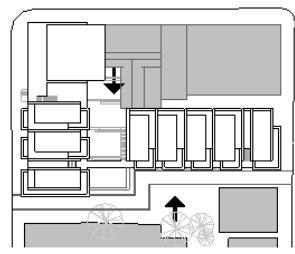
VIEW FROM OUTDOOR SPACE



VIEW FROM TREES

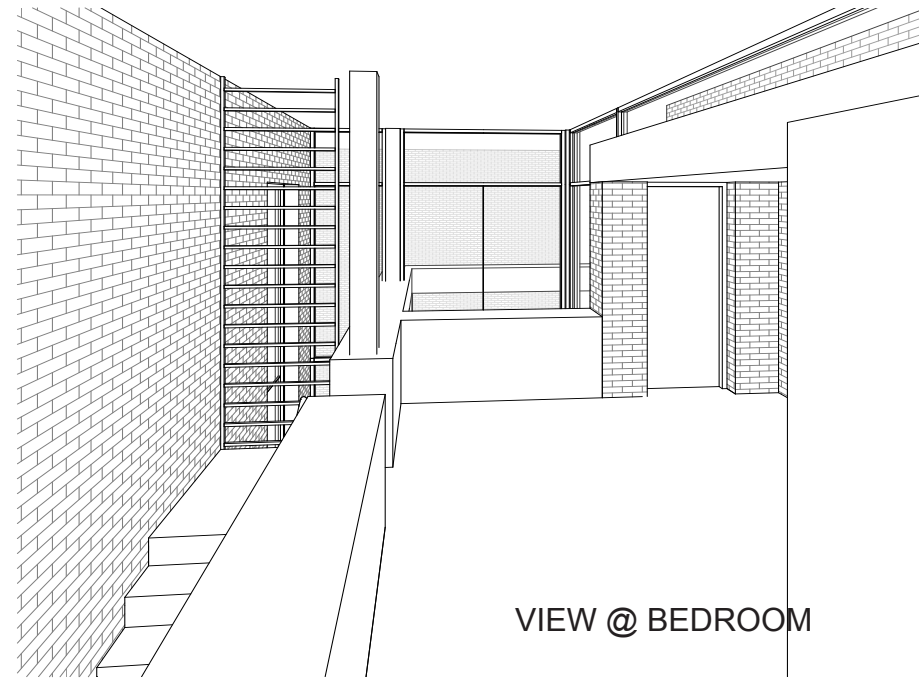


VIEW FROM TUNNEL

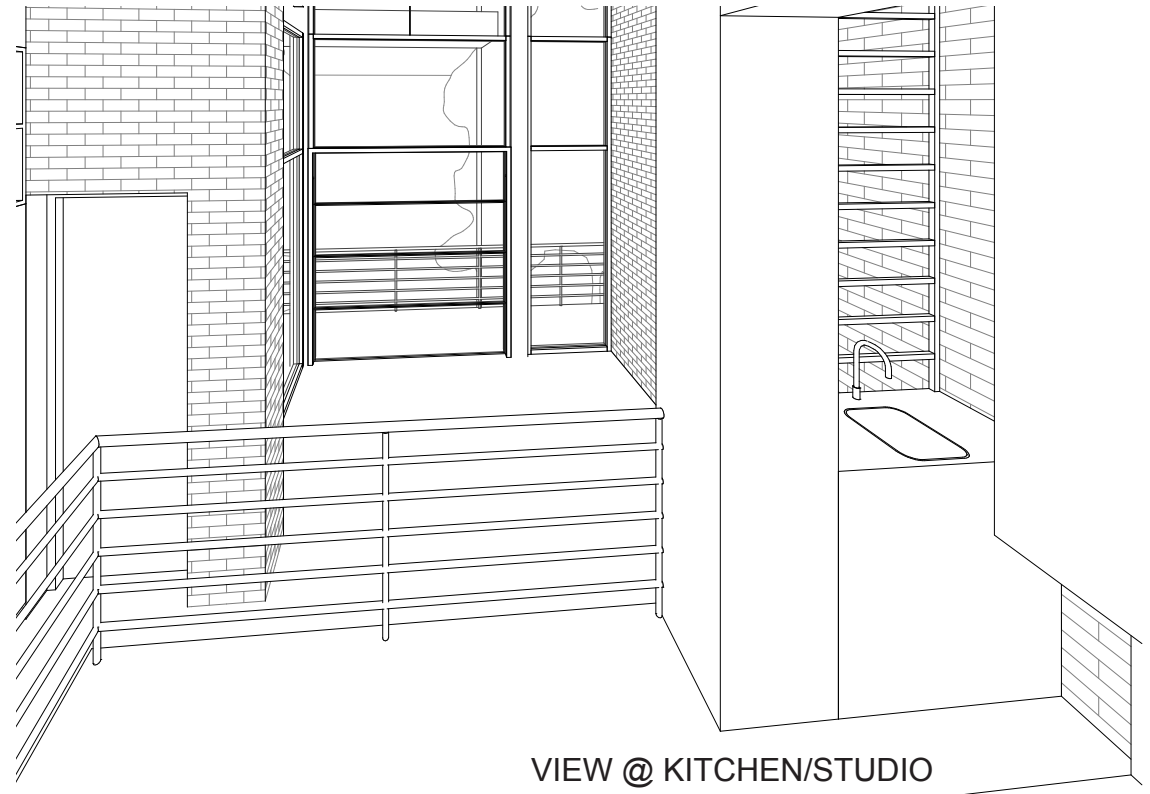




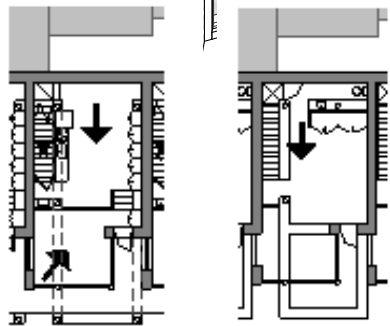
VIEW @ STUDIO

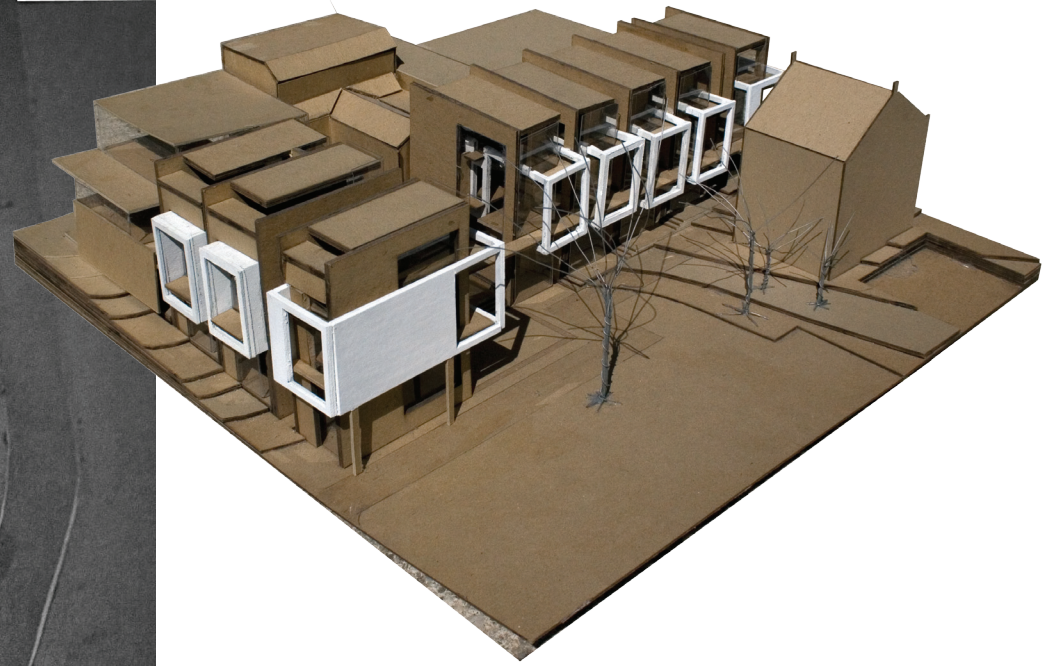
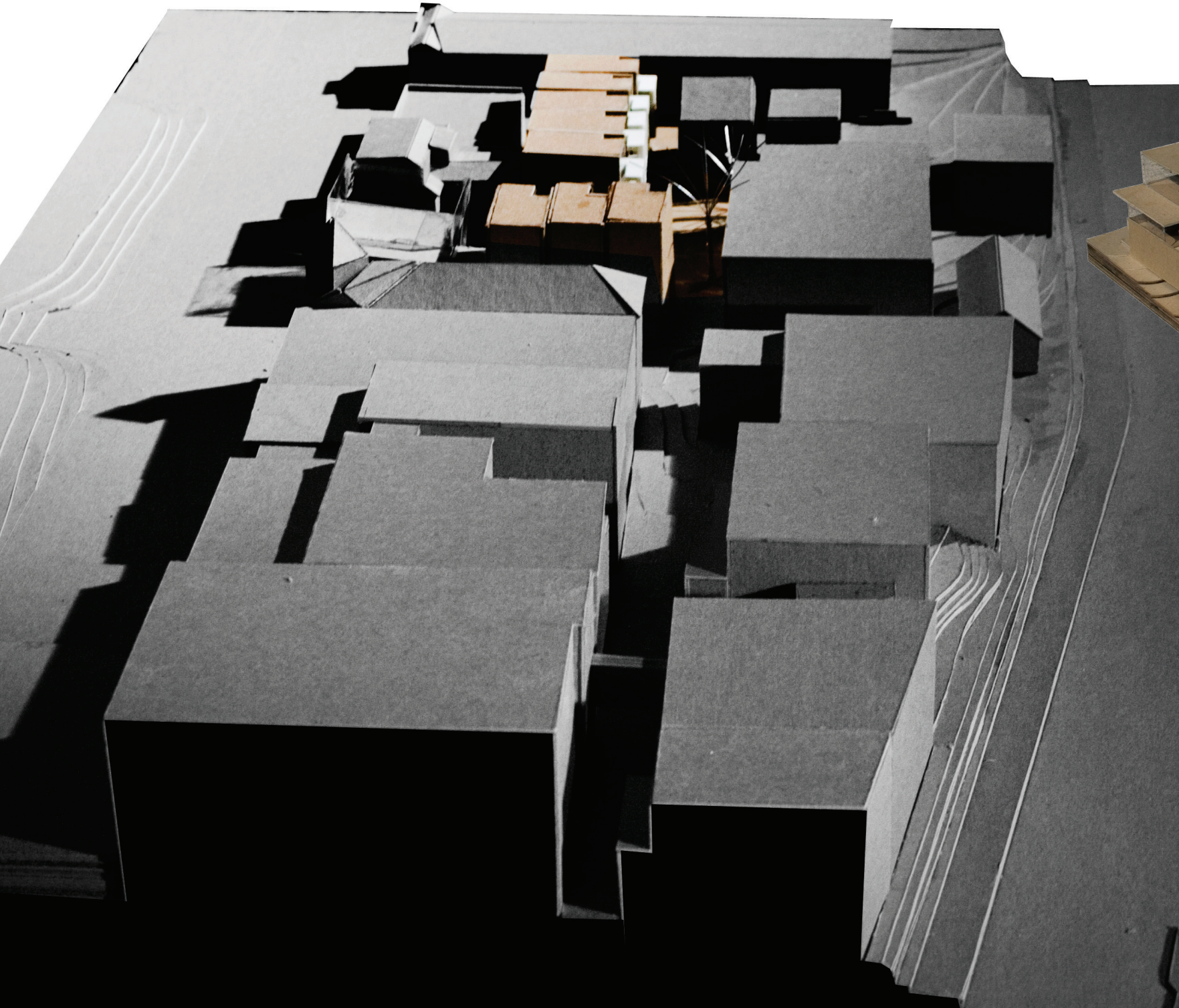


VIEW @ BEDROOM



VIEW @ KITCHEN/STUDIO





MODELS



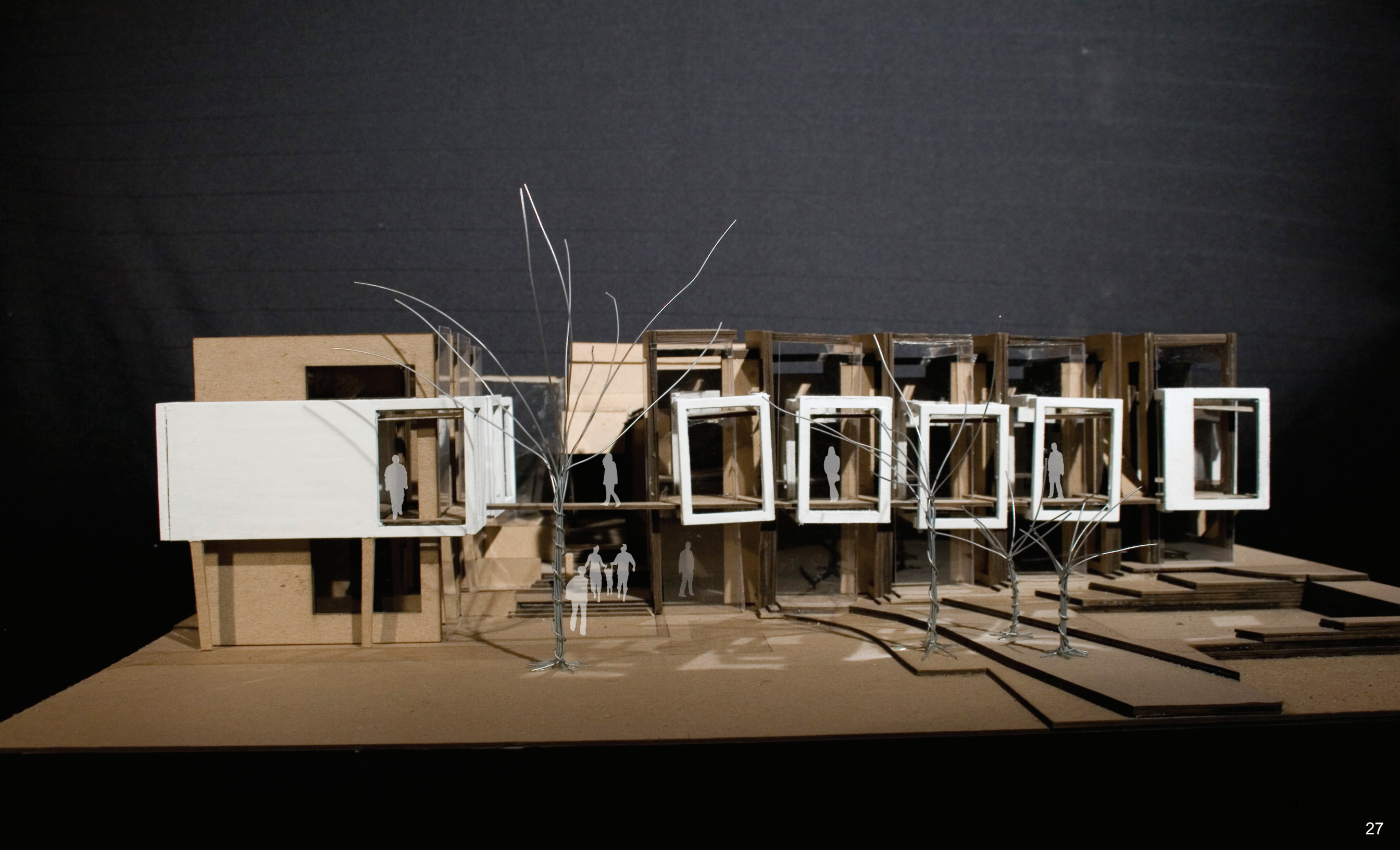




IMAGE CREDITS

ALL IMAGES BY THE AUTHOR