



OUT OF THE THEORY & INTO THE FIELD

# *One Health: Animal health, human health and social empowerment*

**Beth A. Miller, DVM**

Instructor of Biology, University of Arkansas – PTC

President of the International Goat Association

Agricultural consultant

[bmiller@uaptc.edu](mailto:bmiller@uaptc.edu)

@wgdconf #outofthetheory #intofield

# One Health

- the interconnections between people, animals, plants and their shared environment
- **collaborative, multisectoral, and trans-disciplinary approach**
- working at local, regional, national, and global levels
- to achieve optimal health and well-being outcomes



[https://www.onehealthcommission.org/en/why\\_one\\_health/what\\_is\\_one\\_health/](https://www.onehealthcommission.org/en/why_one_health/what_is_one_health/)

# Nutrition Sensitive Agriculture



**Collaborative, multisectoral, and trans-disciplinary**

**Gender is central**

**Livestock impact nutritional outcomes in small scale mixed farming systems**

# But why is it so hard to be trans-disciplinary?



# Silos in Development

- Human health
- Human nutrition
- Agriculture
- Livestock
- Sociology/anthropology
- Development
- Markets
- Policy



What is  $r^2$ ?

Goals?

Indicators?

Tools?

Budgets?

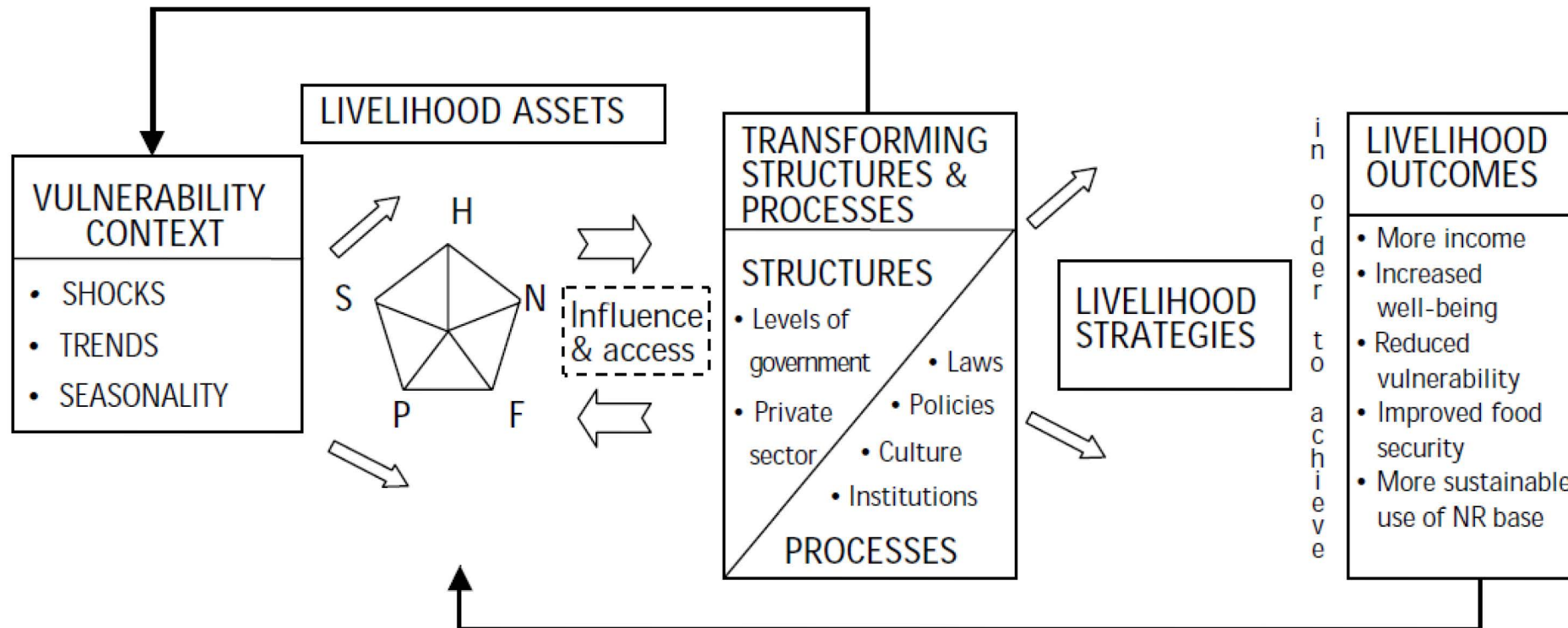
Partners?

Rewards?

- **Wildlife, humans and domestic animals share infectious diseases**
- **Rabies, Ebola, AMR (anti-microbial resistant bacteria)**
- **How can we prevent future infections and pandemics?**



# One Health Requires a Systems Approach



# One Health requires systems thinking and awareness of social context

- **Few transdisciplinary projects are successful because researchers have not been required to learn about each others' fields**
- **Especially gender!**
- **Maybe agricultural researchers go into their fields because they like the narrow focus?**
- **Historically, donors have emphasized quantitative and monetary data rather than contextual interpretations, even if they have gender policies committing them to “transformative gender relations.”**



# Women, livestock and nutrition

Does improved livestock production lead to improved nutritional outcomes for household members, especially children?

- **Excellent academic documentation that gender is a key variable.**
- **Also excellent academic documentation that commercialized dairy and poultry production shifts income from women to men unless intentionally addressed.**

# Making the Case for Livestock:

## GENDER



Compared to other wealth and income opportunities, livestock are **inflation-proof**, self-perpetuating assets that **women** can own and benefit from. In addition to wealth accumulation, they provide **income** and **nutritious food** for their families.

While women assume much of the responsibility for raising livestock in many developing countries, they often face **financial and cultural barriers** to maximising this potential. By **investing in women farmers**, women, their families and communities can benefit.

### WOMEN'S ROLE IN LIVESTOCK ENTERPRISES

<https://whylivestockmatter.org/>

# Sociologists at work

**Oboler, 1986**: Commercialized dairy projects among the Nandi in Kenya transferred income from women to men, and increased women's workload with income going to men only.

**Waters-Bayer, 1987**: Commercialized dairy projects among the Fulani in Nigeria transferred income from women to men, and increased child malnutrition.



# Heifer International

**International livestock NGO based in USA**

**Links technical and social development**

**1990s: Case studies and self assessments finds that commercialized dairy projects in Africa increase women's workload and transfers cash income to men.**

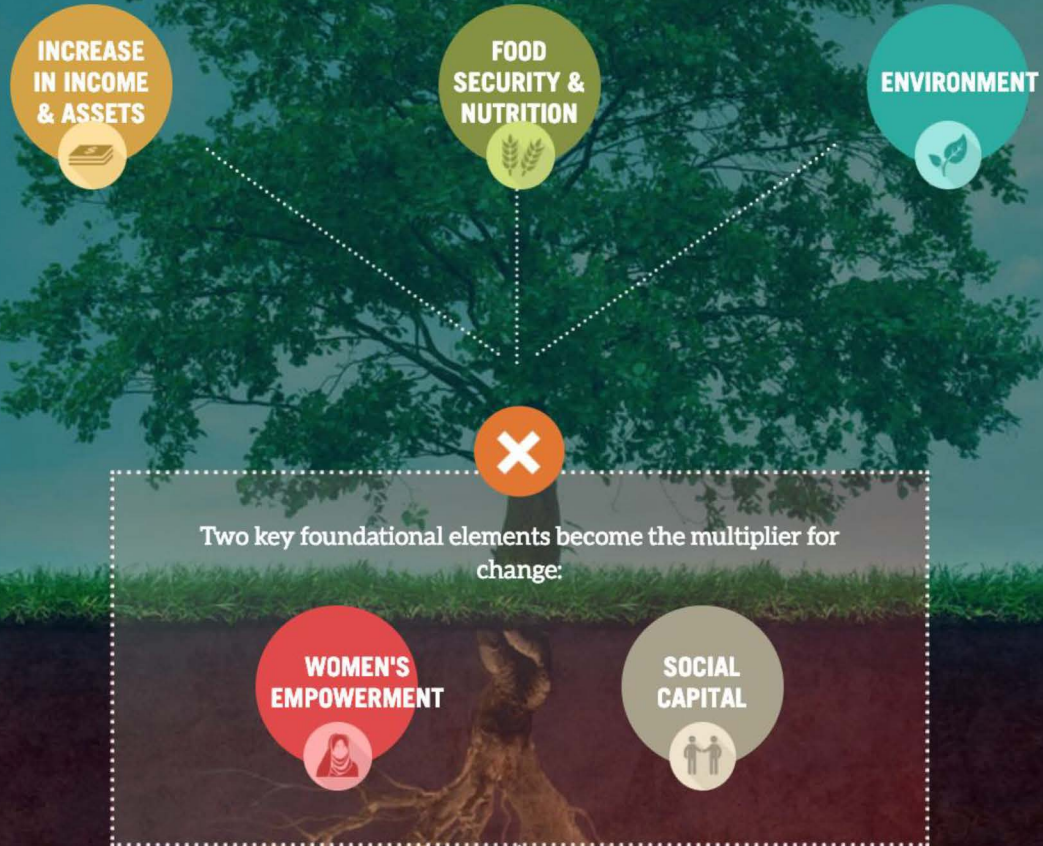
**Gender Equity Program (1994-2008)**

**Gender Vision is men and women, boys and girls sharing the workload and benefits from livestock projects, through workshops for staff, partners, project participants, and including gender equity in annual self-assessments.**

# OUR APPROACH

## Transformation Begins at the Foundation

Heifer International works with communities to strengthen local economies. Our values-based, holistic and community development approach focuses on:



# East Africa Dairy Development (EADD); 2008-2018

**Mutinda, 2011**: commercialization of dairy production transferred income from women to men.

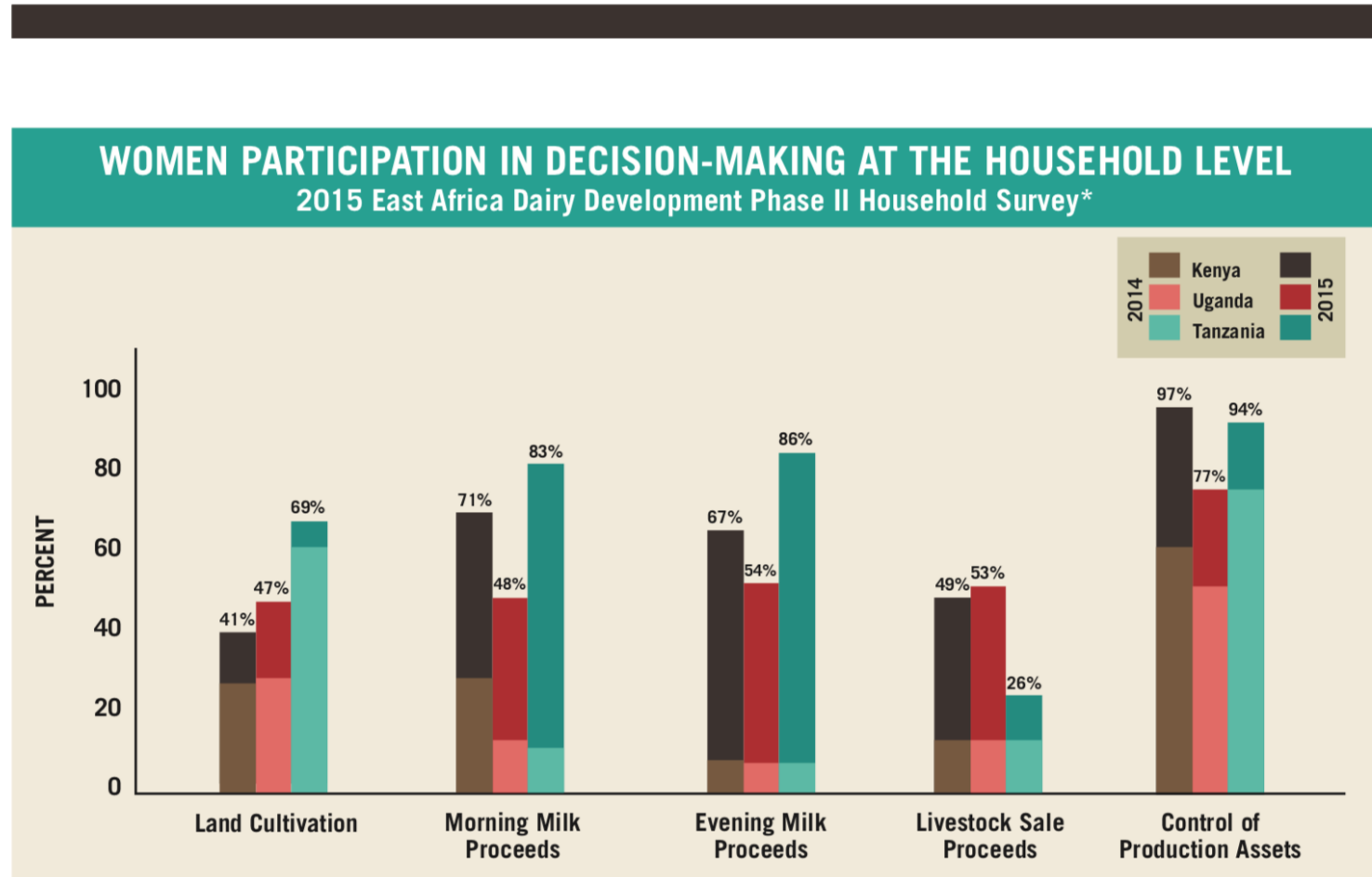
Women were withholding milk to sell informally, and using the cash for family purchases.

EADD assumed that new staff would promote “gender equality” but no one tasked and not in monitoring!



- **Improvements in women's decision-making power at the household level**
- **the results were deemed unusual since behavioral changes - especially in aspects on gender - are more likely to gradually increase over time.**
- **improve collaborative efforts with our project partners**
- **undertake further qualitative assessments to ensure accurate evidence on gender equity at the household level.**

# 2015 HH Survey



# Gender is mainstreamed into a “check-off” for agricultural surveys

In Bangladesh, men and women agreed that household decisions should be made jointly by husbands and wives together.

When asked if they would respect their wives’ opinions if they were different from theirs, however, most husbands **said no.**

**Decision-making was called “joint” but in reality the wife was expected to agree with her husband’s decision.**

Hillenbrand, Emily. 2012. "Baseline Gender Disparities Relevant to a Nutrition Education." *International Conference on Nutrition and Food Sciences*. Singapore: IACSIT Press. <http://www.ipcbee.com/vol39/011-ICNFS2012-N019.pdf>.

HKI. 2011. *NOBO JIBON GENDER BASELINE: attitudes and practices survey*. Survey results, Dhaka: Helen Keller International/CARE Bangladesh.



# Mainstreaming of Gender Equality?

- **It is on the agenda! But is that enough?**
- **It is often superficial rather than transformative**
- **Will One Health be any different?**

# One Health and Livestock Vaccines

**The Livestock Vaccine Innovation Fund (LVIF) - IDRC, Canada**

## **Gender Inclusive Vaccine Distribution and Delivery Systems Project**

- The Cummings School of Veterinary Medicine at Tufts University (TUCSVM)
- One Health Central and East African network (OHCEA)
- International Goat Association (PPR Global Eradication Programme)

# Project strategies

- **Cross training**: Senior managers are all veterinarians with advanced training and experience with gender and social science
- All participating **scientists and students must participate in gender training**
- **Graduate student funding** : agricultural and veterinary graduates to get masters in gender
- Transformative vs extractive gender research requires committed and experienced partners. Livestock specialized NGOs or CBOs rarely have capacity in social development, and social NGO or CBOs rarely have technical capacity. **It is easier to build up technical capacity than social.**

# Project Goals

- **Improved livestock survival and productivity**

- **Social empowerment as defined by**

**Farmers**

**Students**

**Women vaccinators**

**WEIA/WELI**

# Graduate student funding

Janetrix Hellen Amuguni DVM, MA, PhD

Assistant Professor

Department of infectious Disease and Global Health

USAID/One Health Workforce Senior Technical Lead-Africa

Senior Faculty Advisor Tufts- UGHE-UR One Health Collaborative

Tufts Cummings School of Veterinary Medicine

200 Westboro Road, North Grafton, MA 01536

[Janetrix.Amuguni@tufts.edu](mailto:Janetrix.Amuguni@tufts.edu)

# One Health Central and East African network (OHCEA)

- Joint human and veterinary services for pastoral communities
- Joint investigations of antibiotic use and AMR bacteria
- Joint commitment to gender equality

## Challenges

Budgets  
Prestige  
Cultures

OHCEA: <http://www.ohcea.org/>

@wgdconf #outofthetheory #intofield



# Conclusions

**Agricultural technology is important but not adequate to achieve gender justice.**

**Transformation of gender relations requires money, commitment and well-planned interventions.**

**Research alone will not change policies; we must become advocates.**

**Investment in activist graduate students who will make a difference.**

**Thank you!**  
**And be sure that all your goats are healthy!**

