

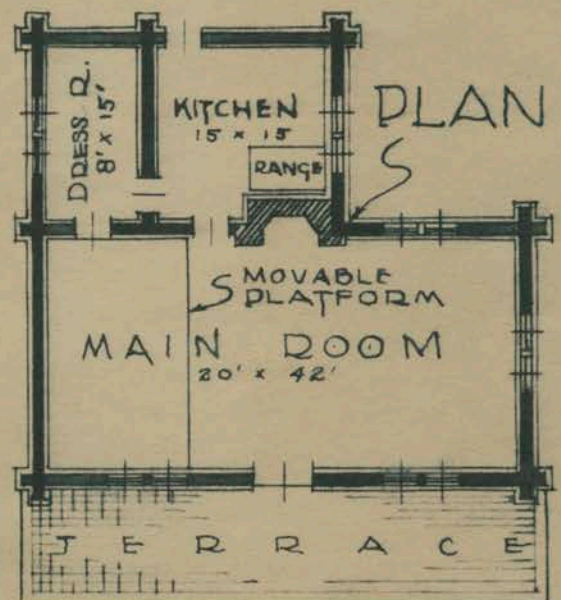
# A DURAL COMMUNITY CENTER ...

Capacity 85 People

THIS ATTRACTIVE LOG COMMUNITY BUILDING HAS A MAIN ASSEMBLY HALL 20'-0" x 42'-0" INSIDE DIMENSIONS.

SECTIONAL PLATFORM IN ONE END FOR DRAM-

ATICS MAY BE FOLDED AGAINST WALL WHEN NOT IN USE. THERE IS A KITCHEN ON BACK AND STORAGE OR DRESSING ROOMS CONNECTING WITH STAGE. FRAME ROOF MEMBERS ARE SHOWN, BUT RUSTIC POLE CONSTRUCTION MAY BE USED.



AGRICULTURAL ENGINEERING DEPT.  
EXTENSION DIVISION V. P. I.

PLAN NUMBER **M 3.11**