

The Nature of a Wooden Boat
Boat. House. Analogy.

Kyle Hunter Harris

Thesis submitted to the faculty of the Virginia Polytechnic Institute and State
University in partial fulfillment of the requirements for the degree of

Master of Architecture

Hans C. Rott, Committee Chair

Frank H. Weiner

Patrick A. Doan

May 13, 2019
Blacksburg, Virginia

Contents

i
Title Page

ii
Contents

iii
List of Images

iv
Boat. House. Analogy.

v
Abstract

1
Possum Trot Reservoir

2
Line Drawings

9
Models

13
Frames

16
Appendix

List of Images

The Dream	iv	11" x 14"	Graphite Pencil and Ink Pen Strathmore Drawing Paper
Boat. House. Analogy	v	11" x 14"	Graphite Pencil Strathmore Drawing Paper
Site Photographs	1	Berry College, Possum Trot Reservoir	iPhone 7 Plus, Nikon D3100

Lines Drawings

Plans, Sections, Elevation, House	2	36" x 48"	Graphite Pencil Clearprint Vellum
Lines Drawings Drawn from Richard Lepastrier's Boat, Dorothy	2	18" x 24"	Graphite Pencil Clearprint Vellum
Ground Plan, Floor Plan, Loft Plan, House	3	36" x 48"	Graphite Pencil Clearprint Vellum
Longitudinal Section, House	4	36" x 48"	Graphite Pencil Clearprint Vellum
Front Elevation and Sections, House and Shelter	5	36" x 48"	Graphite Pencil Clearprint Vellum
Plan, Section, Elevation, Boat Shelter	6	36" x 48"	Graphite Pencil Clearprint Vellum
Constructed Perspective, House	7	36" x 48"	Graphite Pencil Clearprint Vellum
Site Elevation, House	8	36" x 72"	Graphite Pencil, Adobe Photoshop Clearprint Vellum

Models

Chipboard Model, House and Shelter	9	1/4" = 1'	Photography Nikon D3100
Chipboard Site Model, House and Shelter	10	1/16" = 5'	Photography Nikon D3100
Boardwalk Structure Sketches	11	11" x 14"	Graphite Pencil Strathmore Drawing Paper
Boardwalk Post Model	11	Pine	Photography Nikon D3100
Chipboard Massing, Structure, and Entrance Evolution	12	1/8" = 1'	Photography Nikon D3100

Frames

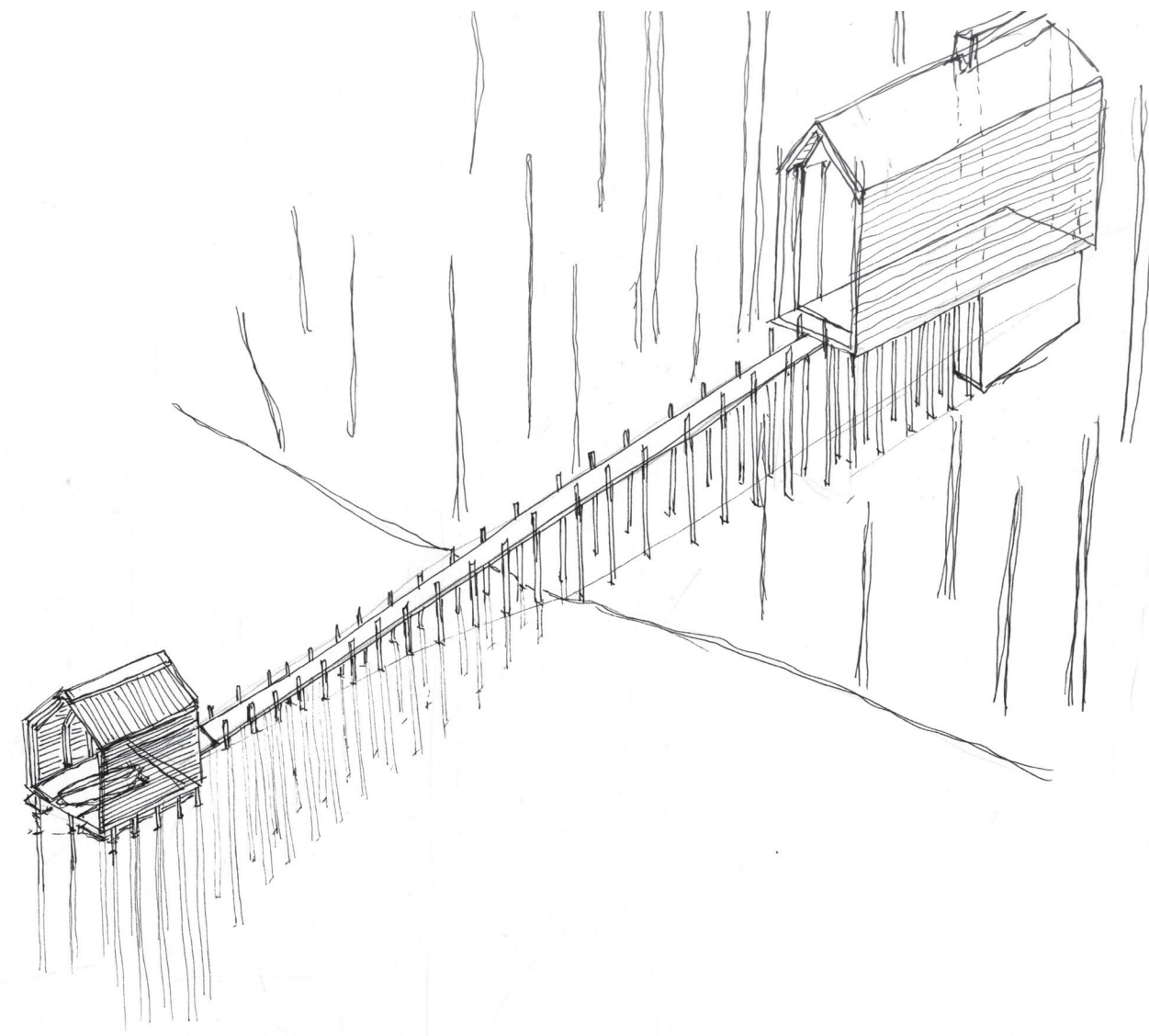
Frames, Isometric, House and Shelter	13	24" x 36"	Graphite Pencil Clearprint Vellum
Frames with Stair Tower, Axonometric, House	14	24" x 36"	Graphite Pencil Clearprint Vellum
Frames Plans, Section, and Elevation, House and Shelter	15	24" x 36"	Graphite Pencil Clearprint Vellum

Appendix

Site Plan and Elevation, House and Shelter	16	24" x 36"	Graphite Pencil Clearprint Vellum
Drawings 1 and 2, House	17	18' x 24"	Graphite Pencil Strathmore Drawing Paper
Drawings 3, 4, 5, and 6, House and Shelter	18	18" x 24"	Graphite Pencil Strathmore Drawing Paper
Three Schemes	19	18" x 36"	Ink Pen Roll Sketch Paper
Detail Sketches	20	Various Sizes	Graphite Pencil Arranged in Adobe Photoshop
Boat Shelter Schemes	21	18" x 24"	Graphite Pencil Strathmore Drawing Paper
Boat Shelter Model Photos	22	1/4" = 1'	Photography Nikon D3100
Perforated Corten Western Rib Sample	22	Western States Metal Roofing	Photography Nikon D3100
Cowgill Hall	23	May 2019	

The Nature of a Wooden Boat

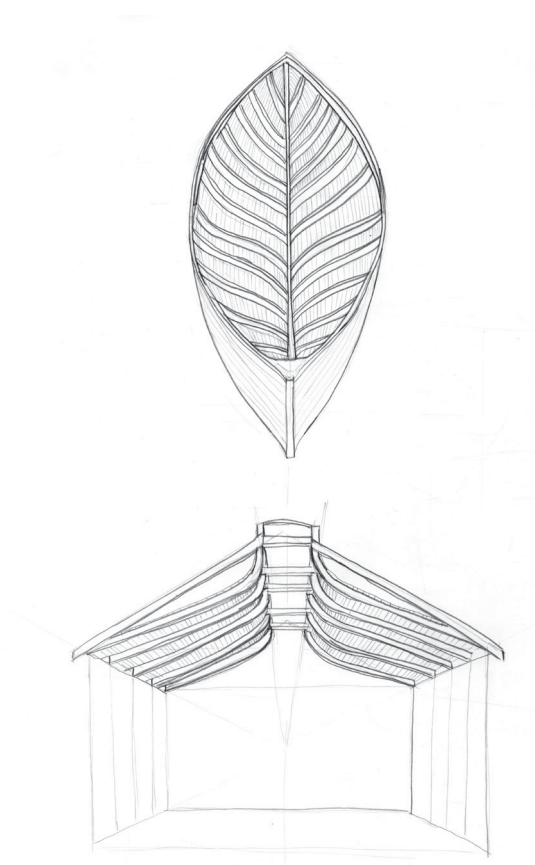
Boat. House. Analogy.



Abstract

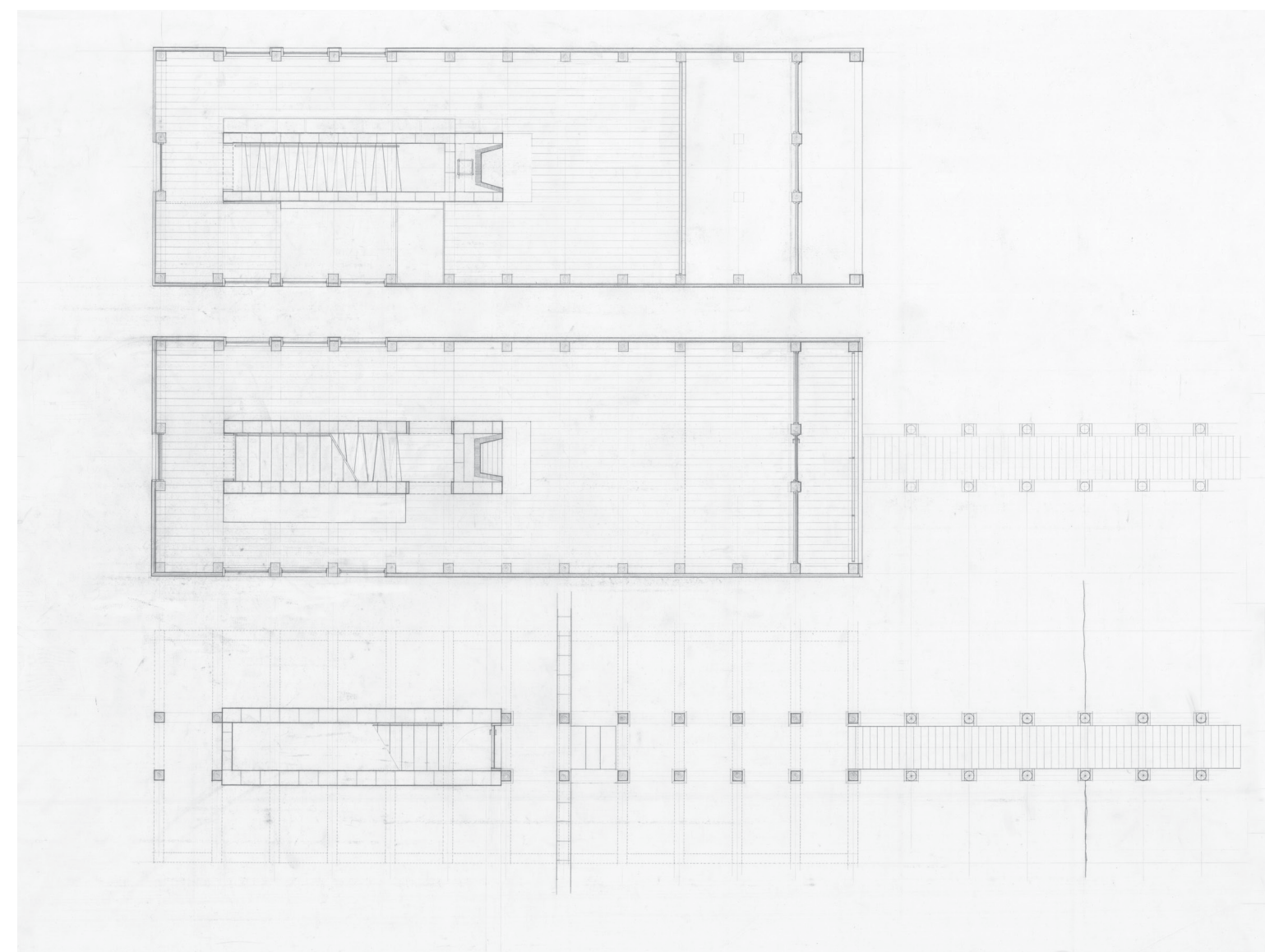
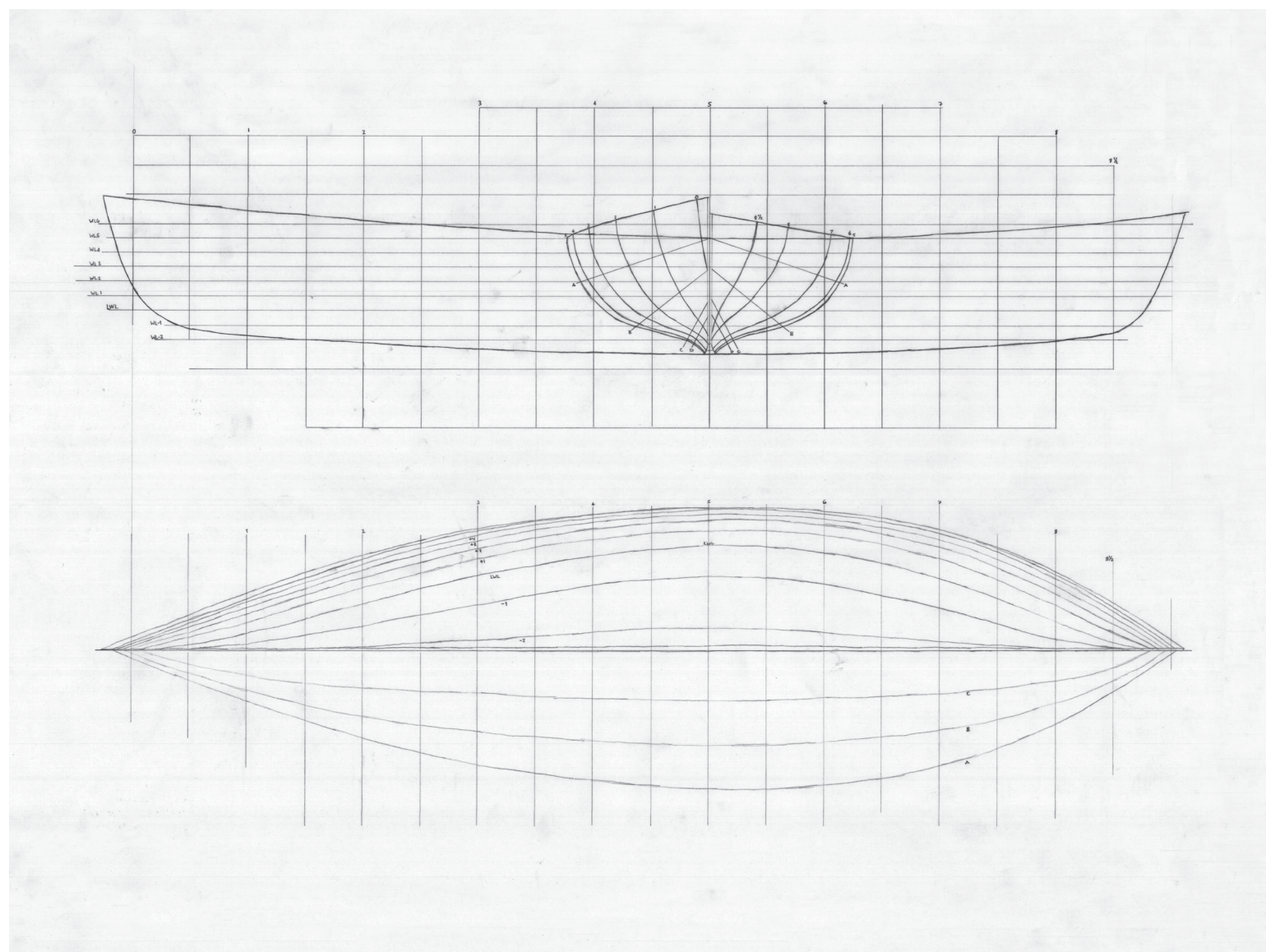
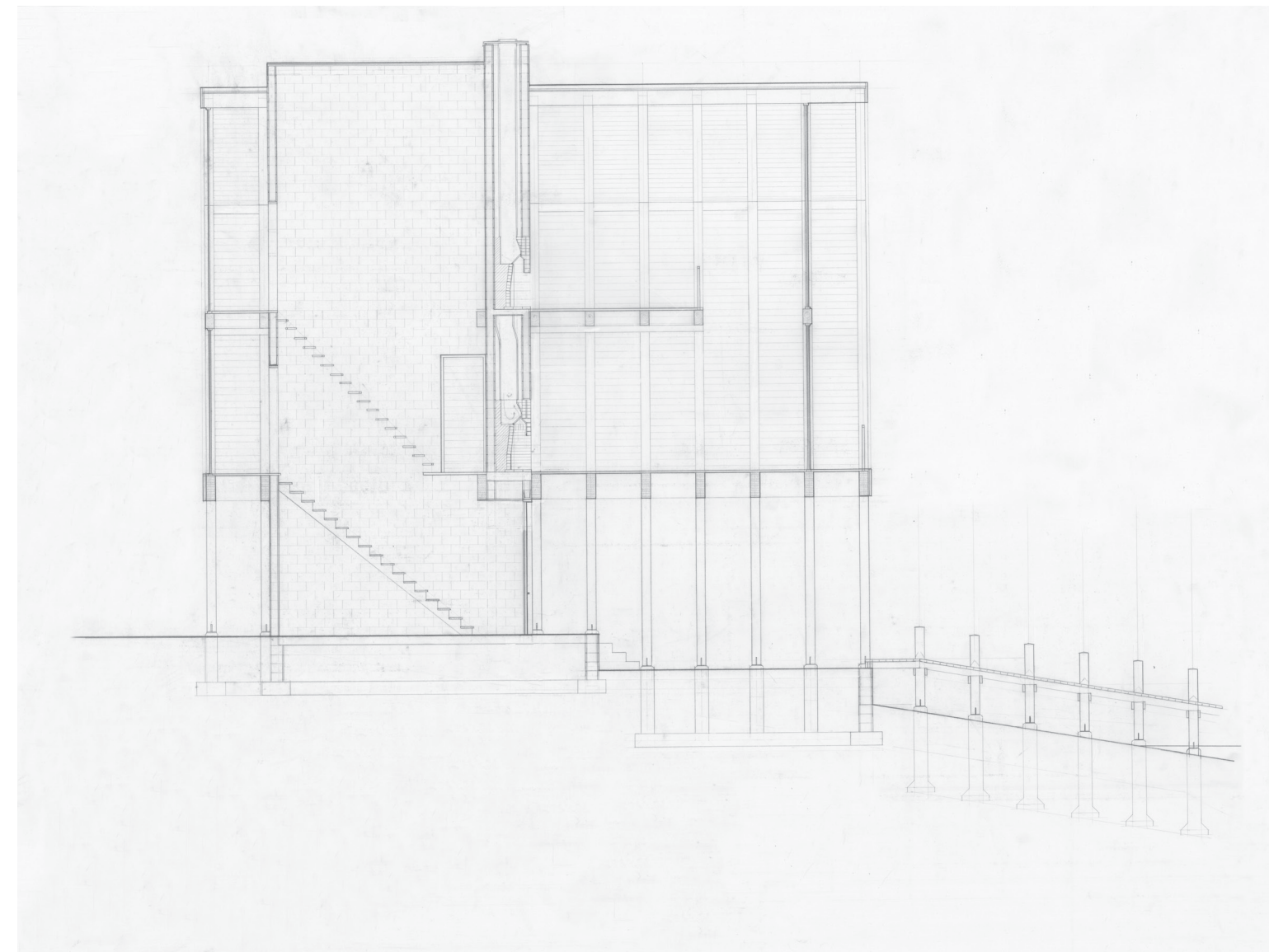
This work seeks to explore the nature of a wooden boat and how a boat's design and construction can influence the building of a house. It is a search for a structure that bears a memory of a boat and celebrates the craft and care of which boats are built.

The house is located on the north side of a secluded reservoir in the Northwest Georgia mountains. It is raised up on and supported by a structure that is reminiscent of the way a keel of a boat supports and connects the boat together. This structure extends out from the house to a small shelter for a boat over the water. On the interior, heavy frames support and give shape to the thin shell of the house. Their repetition encourages a view towards the boat and its shelter. The house itself is thought of as a vessel, a place that provides a sense of holding, of protecting and keeping safe, and of strength.

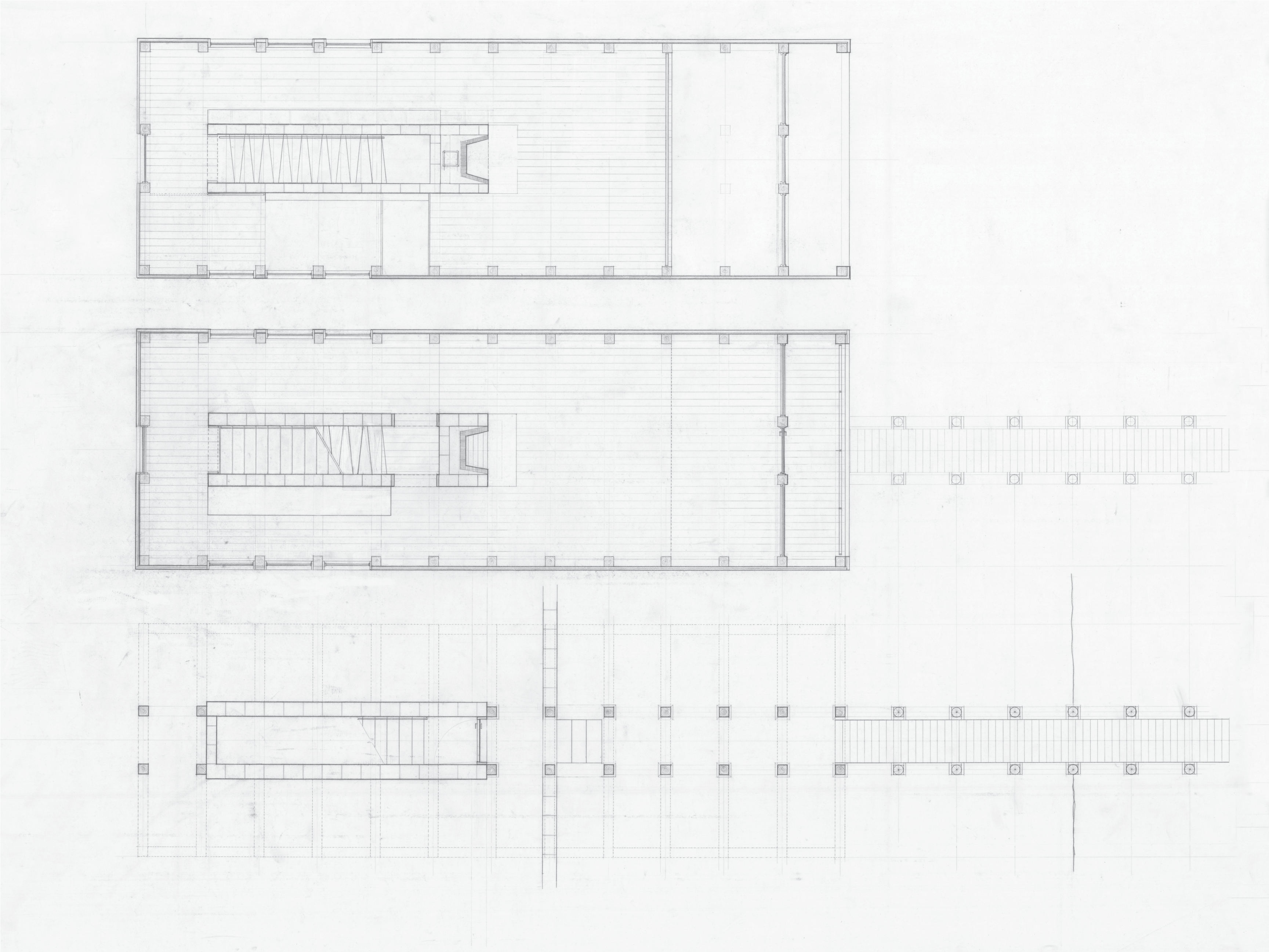


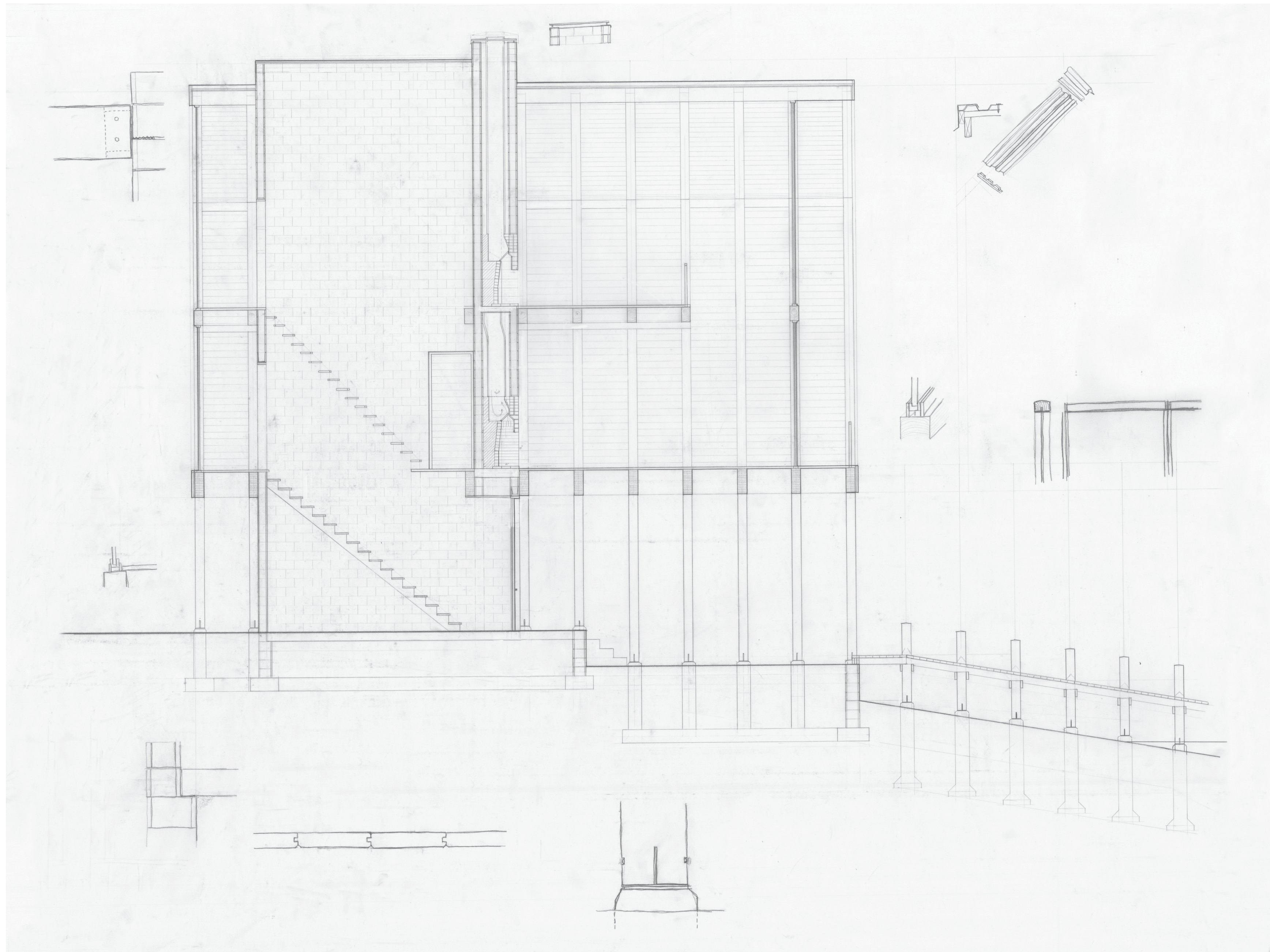


It is beautiful out today. I parked my car at the Old Mill and began to walk up the dirt road to the reservoir. I passed a few families riding bikes and after walking for a mile I made it to the water. There is a strong breeze, so the reflections of the trees are rippled and barely there. The sky is clear and it is quiet other than a couple swimming at the sandy part of the shore. I scare off a few frogs and a snake as I walk along the edge. I was told there was the remains of an old cabin on the north side of the reservoir and was able to find it, but there was no more than a pile of stones and old wood in the leaves. I stopped for a few minutes to listen to the wind blowing through the leaves and the crickets chirping, but the birds are quiet today.

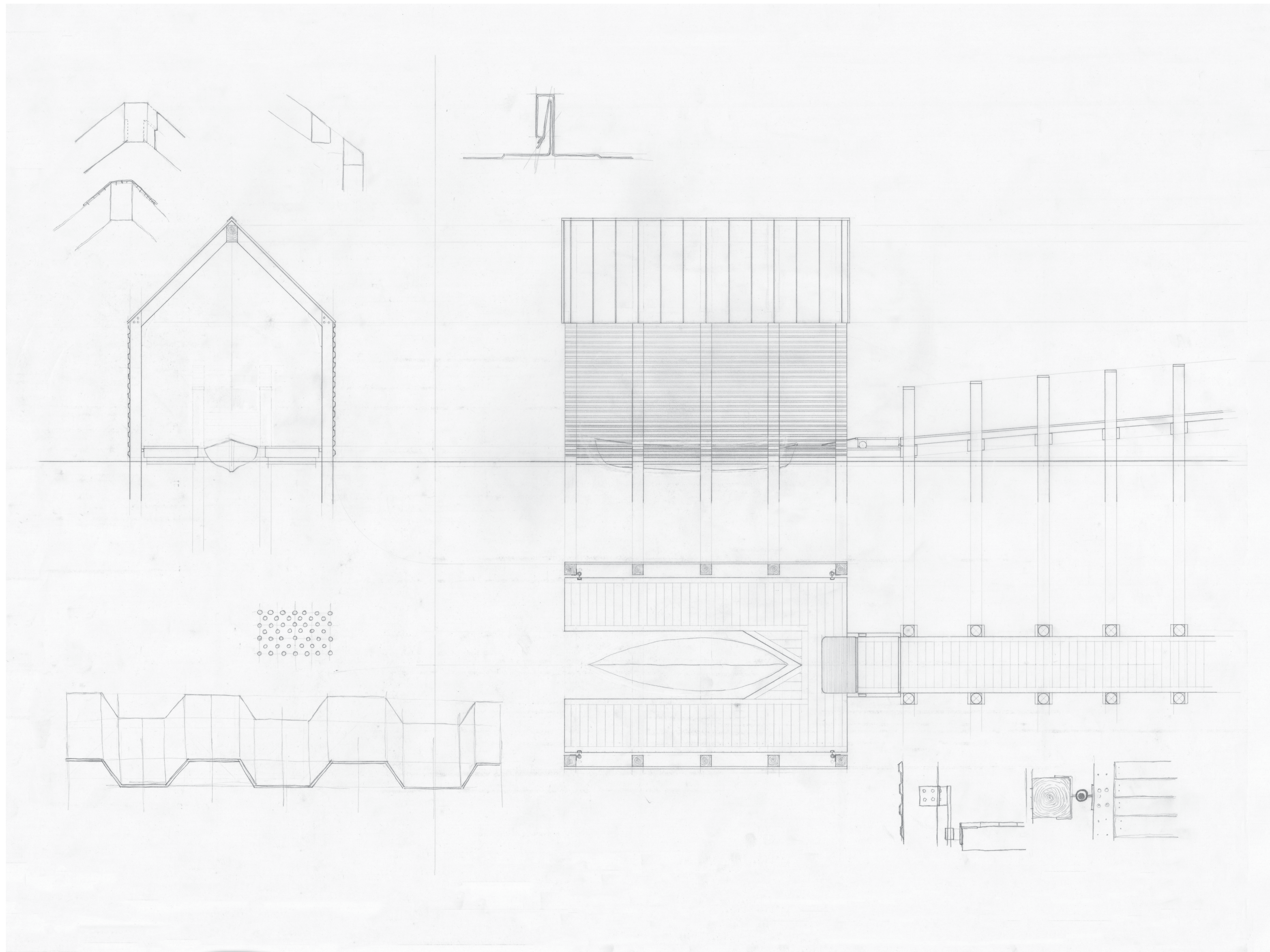


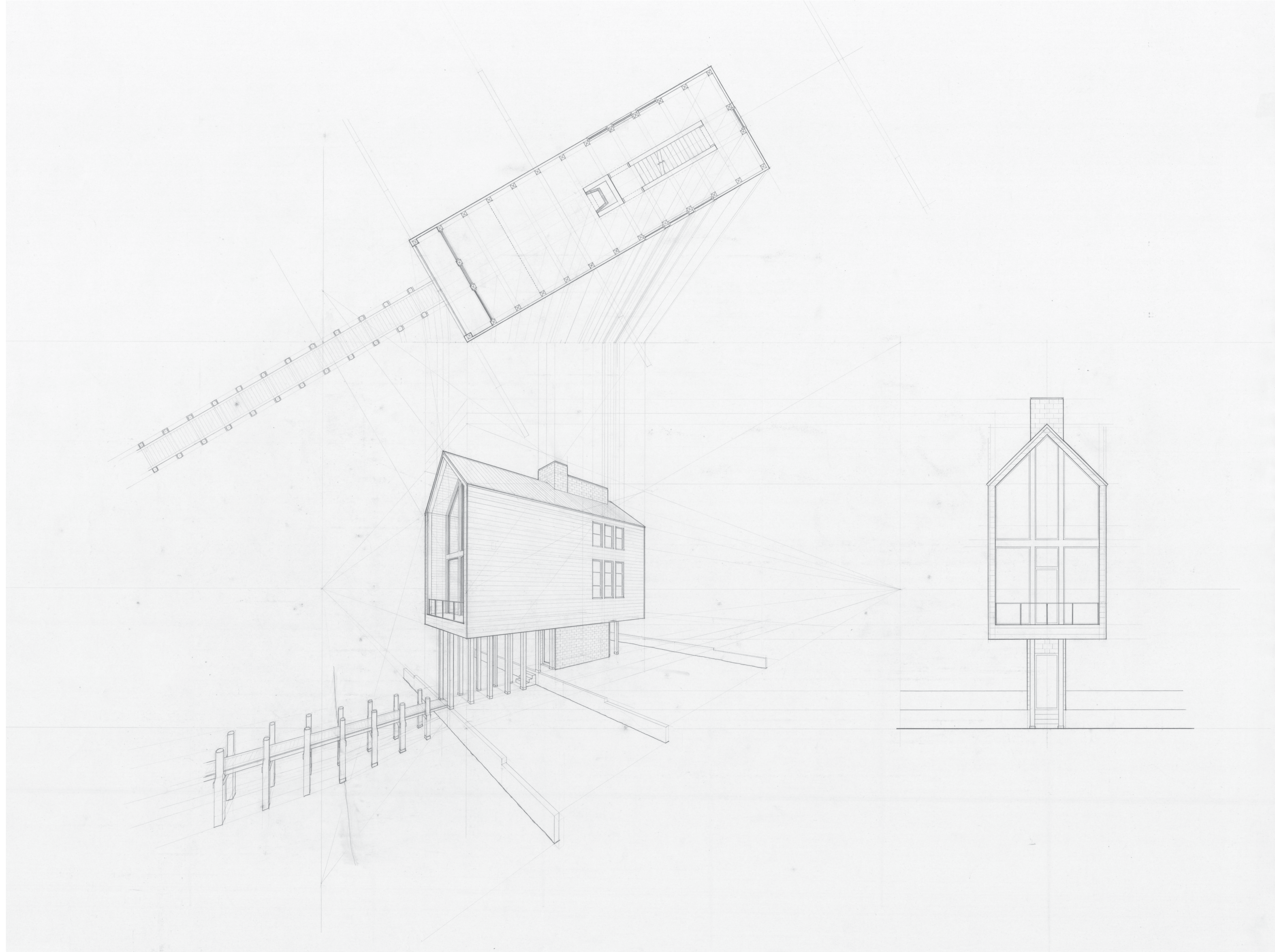
Wooden boats are often designed through drawing and developing a set of lines drawings. These drawings consist of views of the boat that include the profile, the body plan, and the half breadth plan. The profile is a drawing of the side elevation of the boat and waterlines, the body plan shows cross sections through the hull and frames, and the half breadth plan shows the shape of the hull and the waterlines from the profile drawing. These lines show the shape and contours of the boat in a way that is similar to how an architect would draw plans, sections, and elevations of a building and its site.

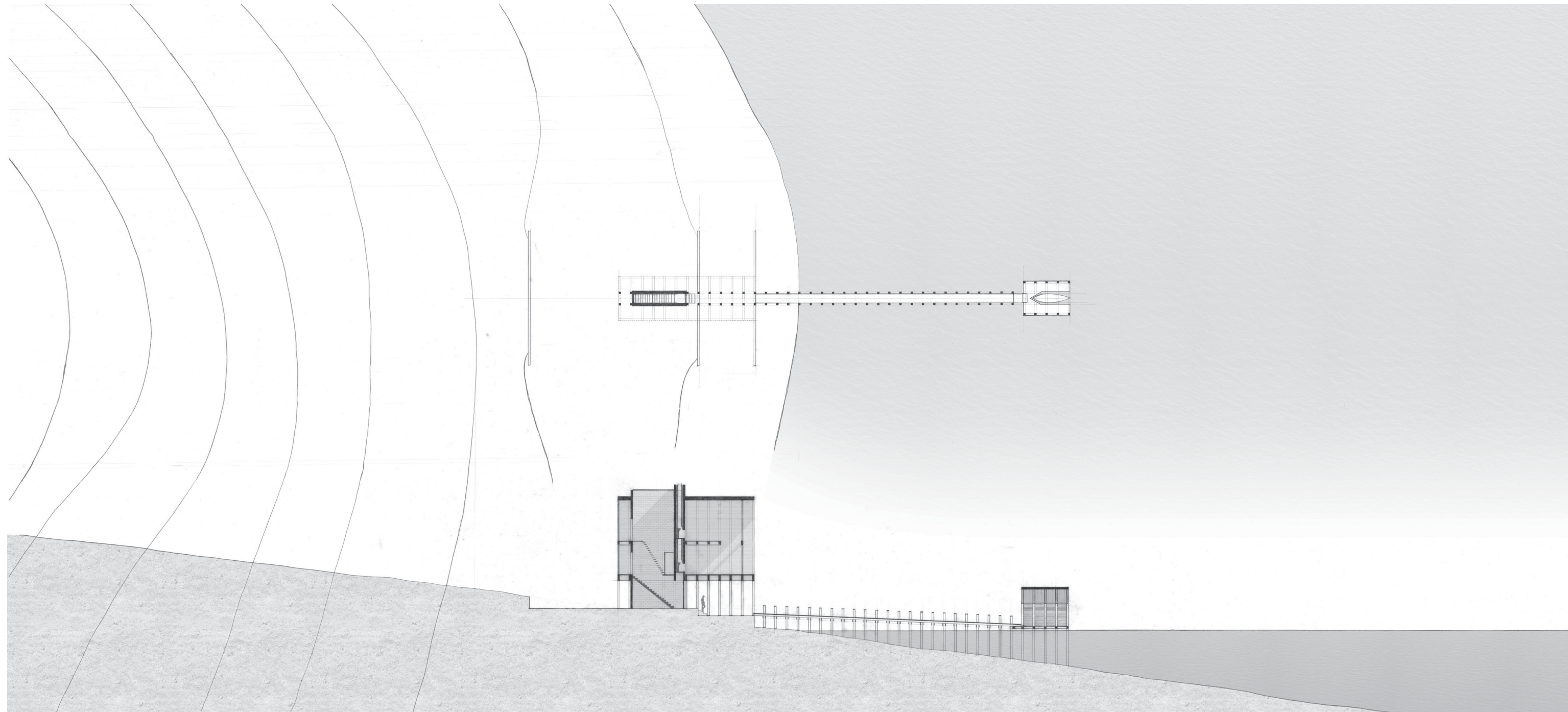




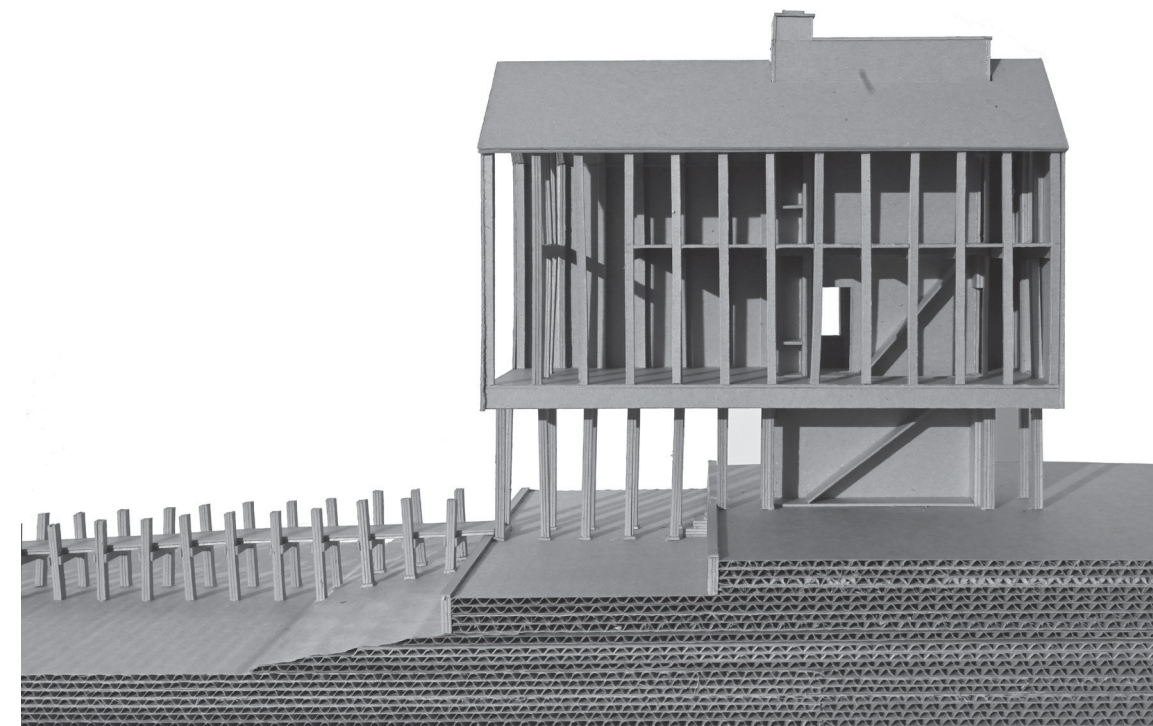
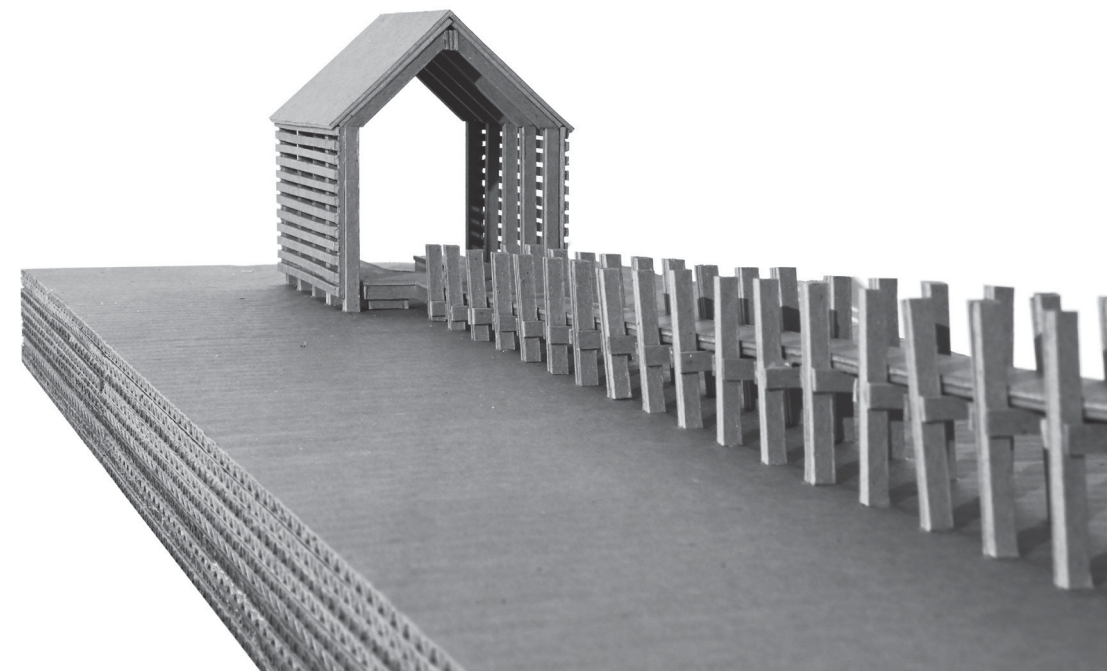
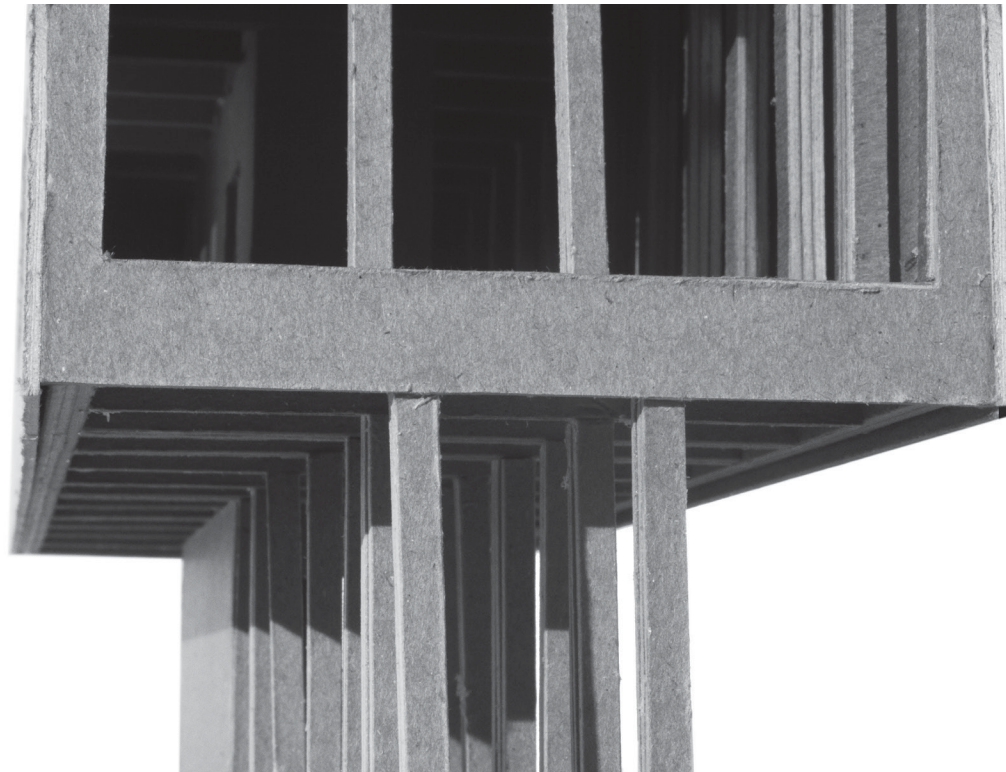
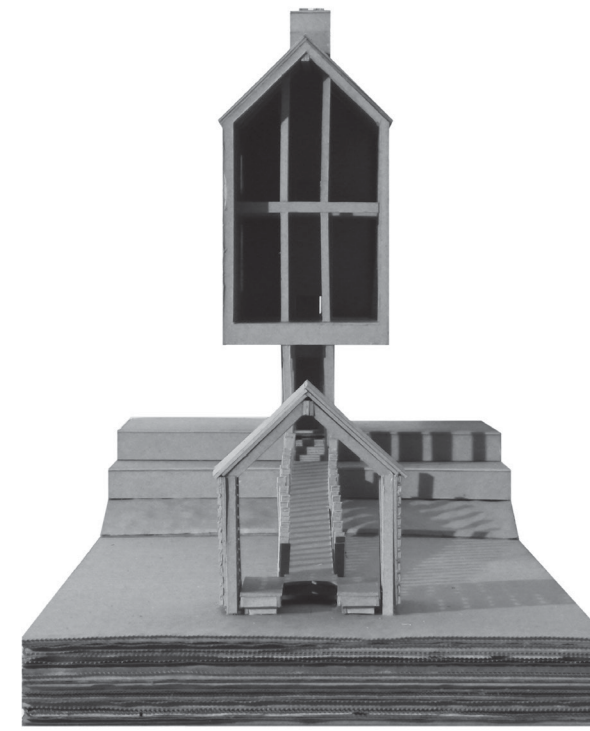
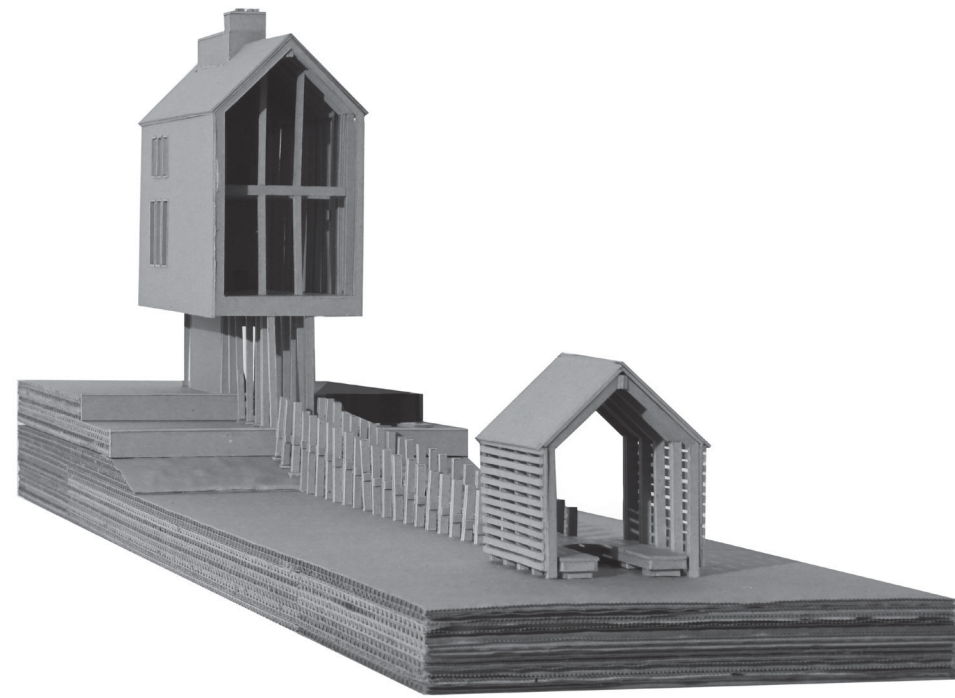


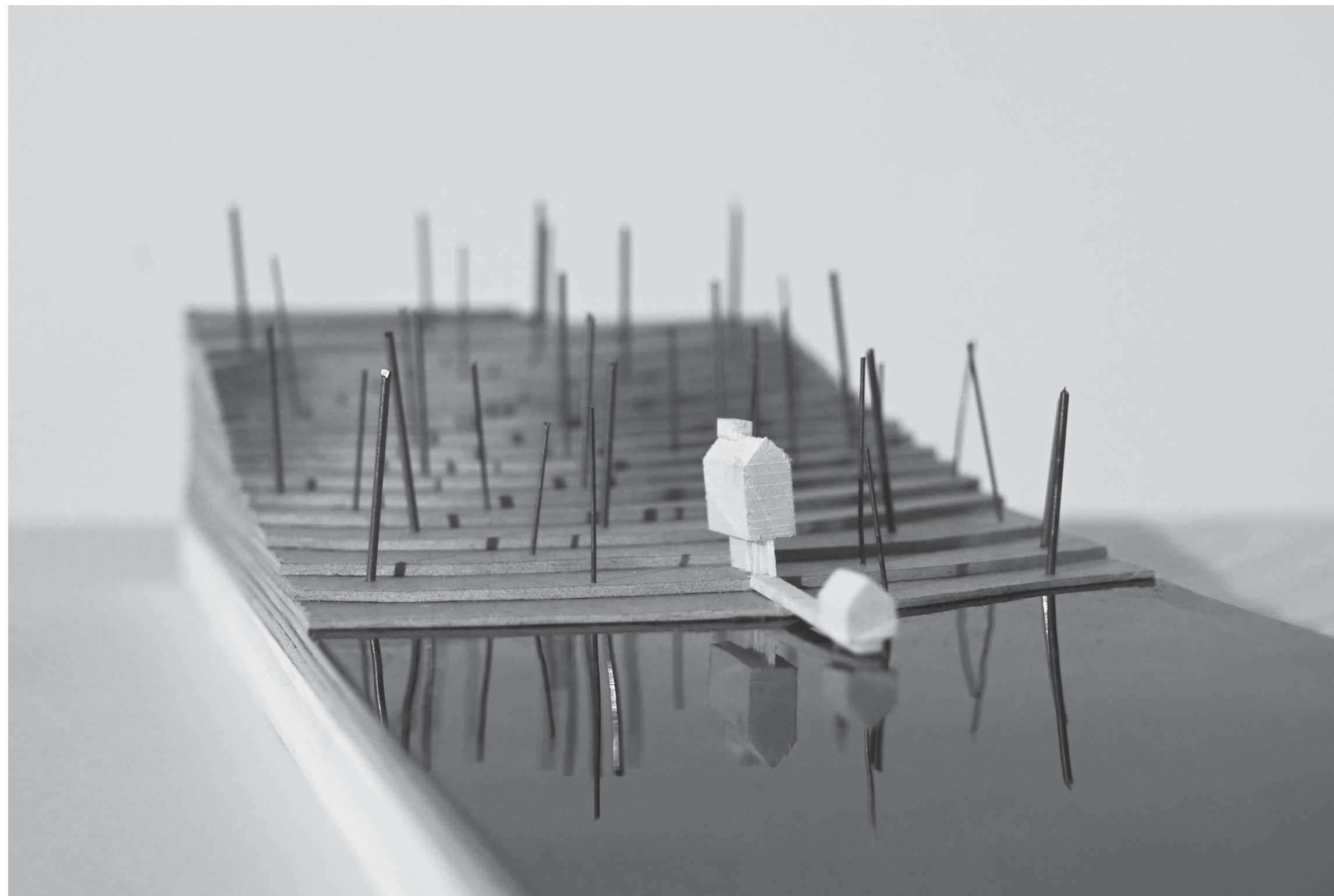






The concrete block stair tower not only gives strength and stability to the house, but offers a chance to look up to the trees and sky through the glass skylight. The tower contains the front entrance and becomes a set of repetitive wooden columns that define the walkway and path towards the boat shelter. This structure bears the memory of a keel of a boat, supporting and forming a base for the house.



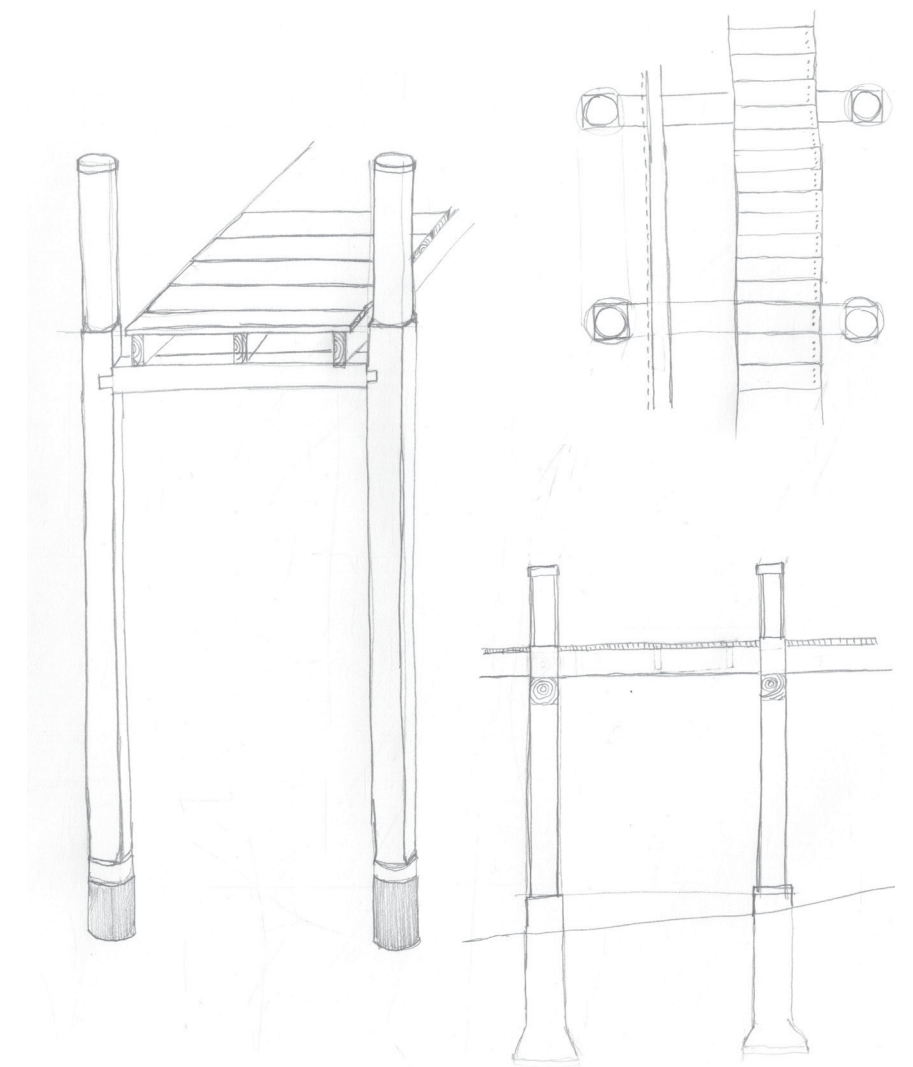
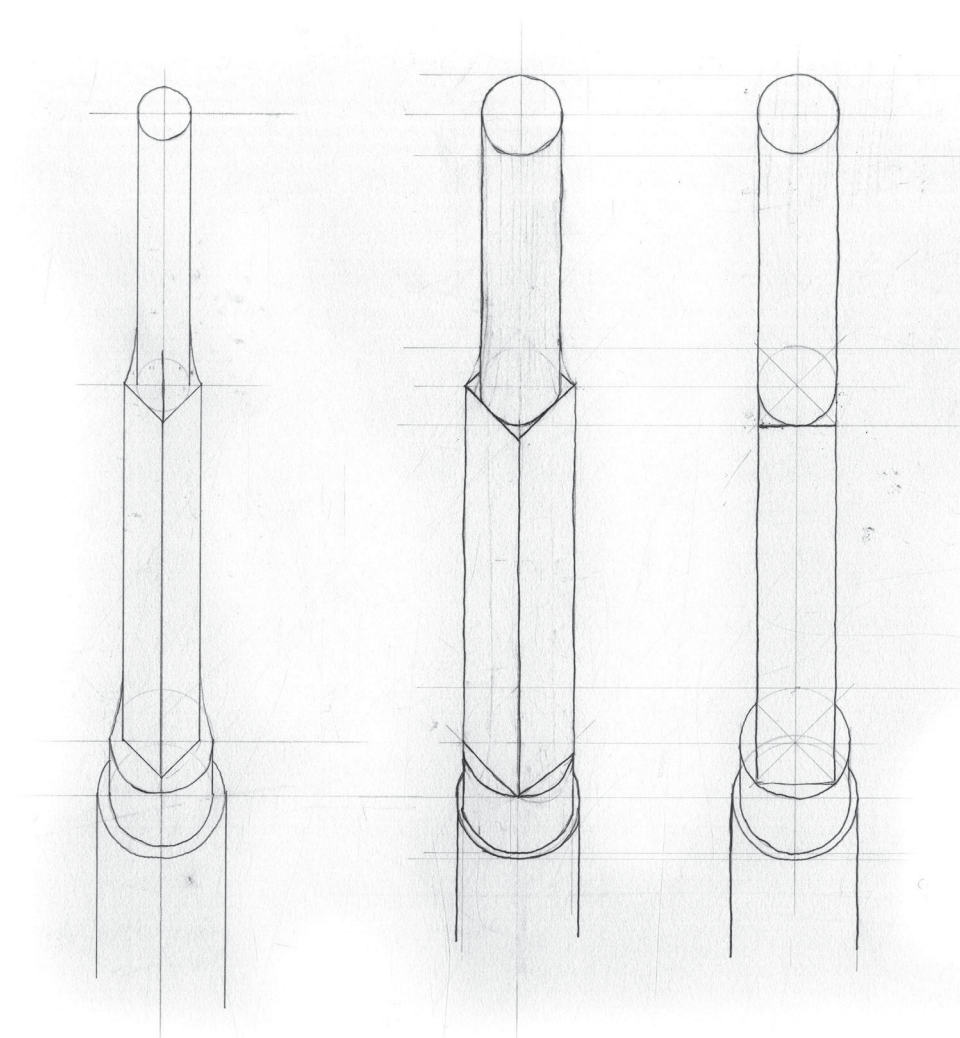


There is a sense of architecture in the words vessel, naval, and berth.

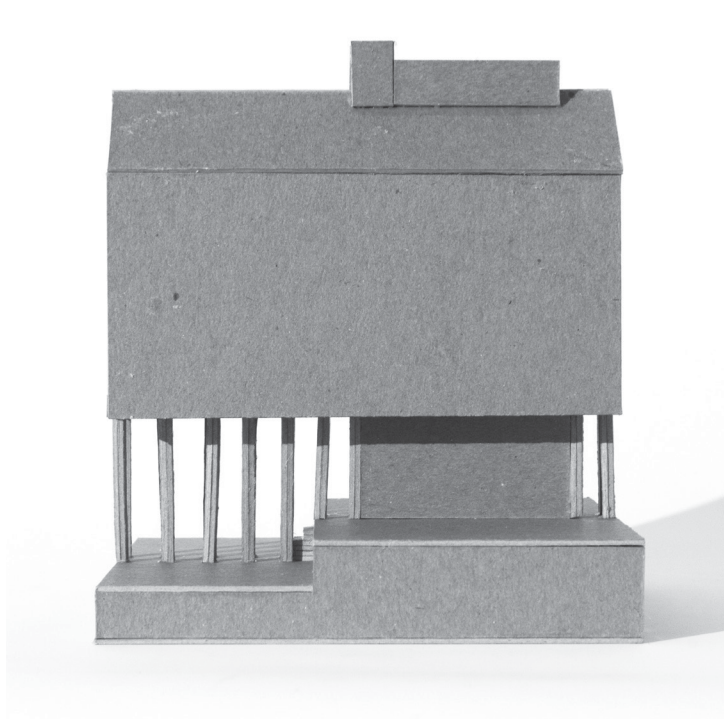
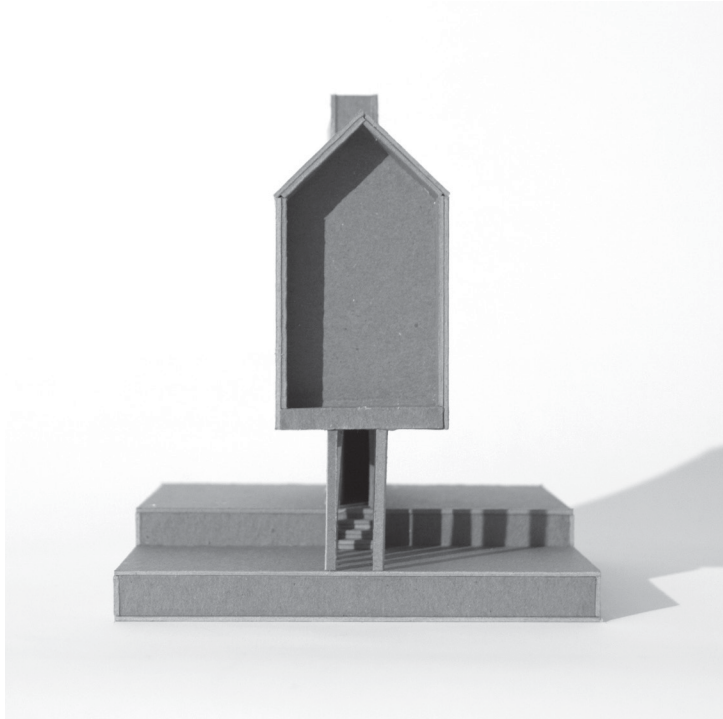
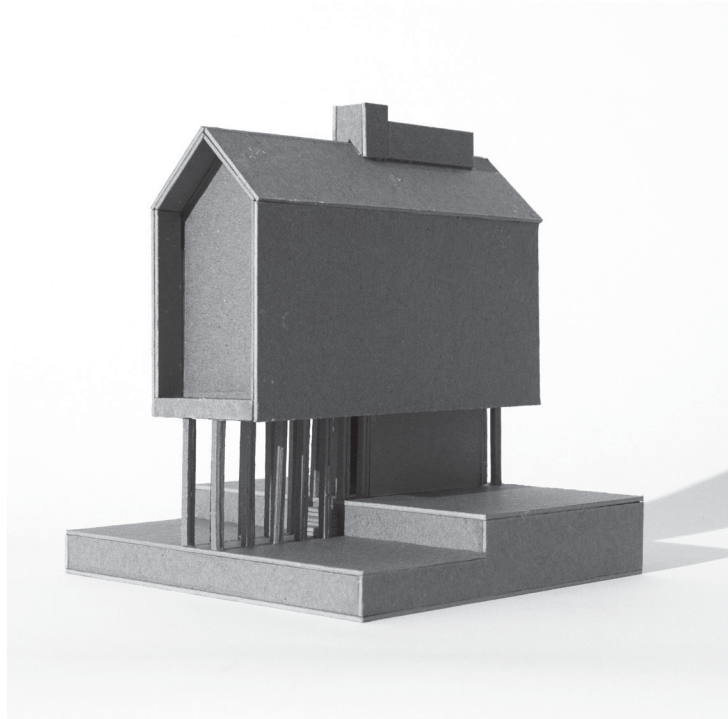
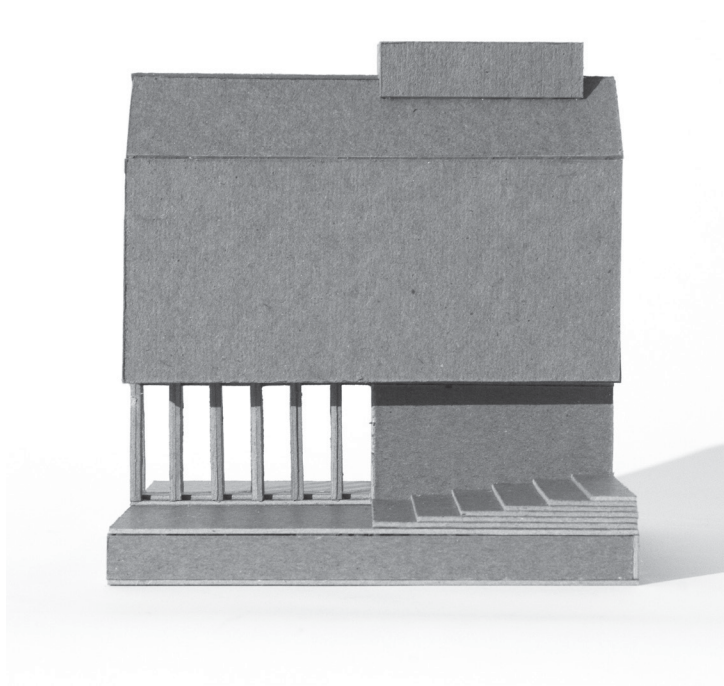
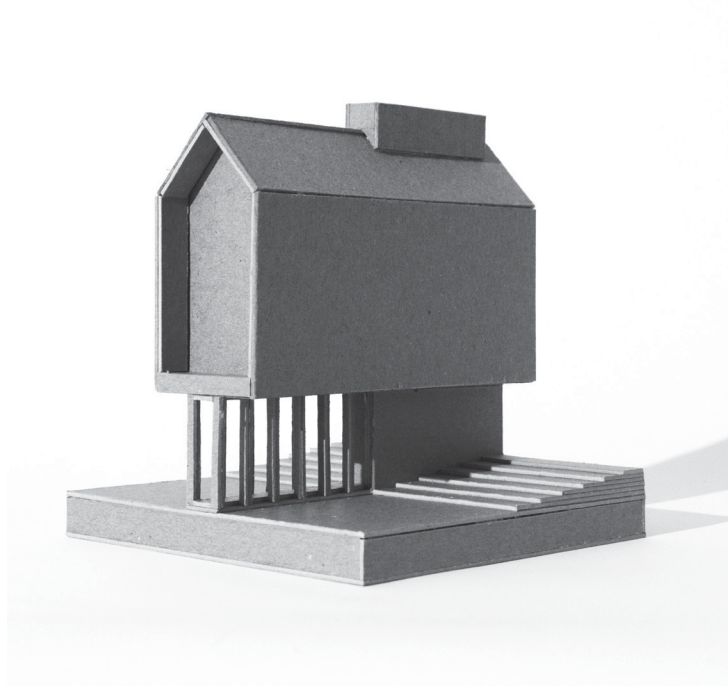
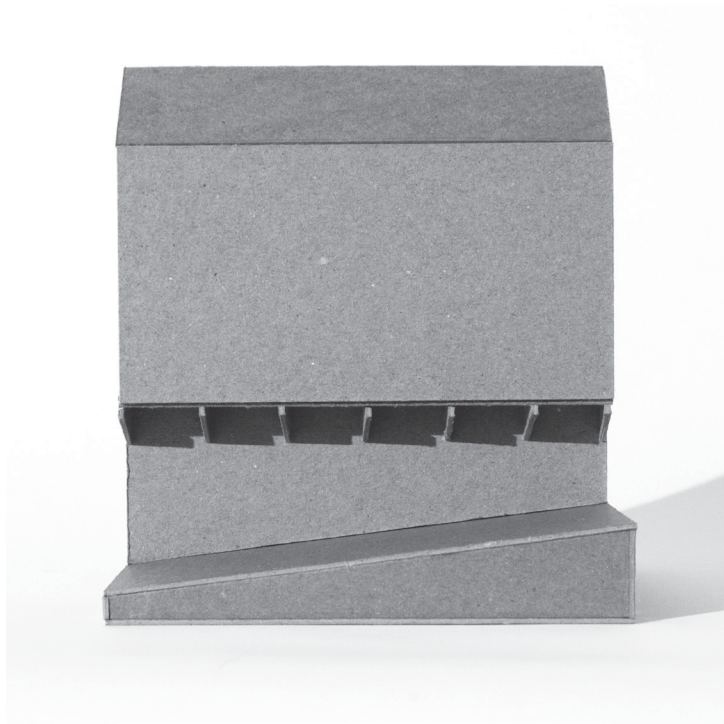
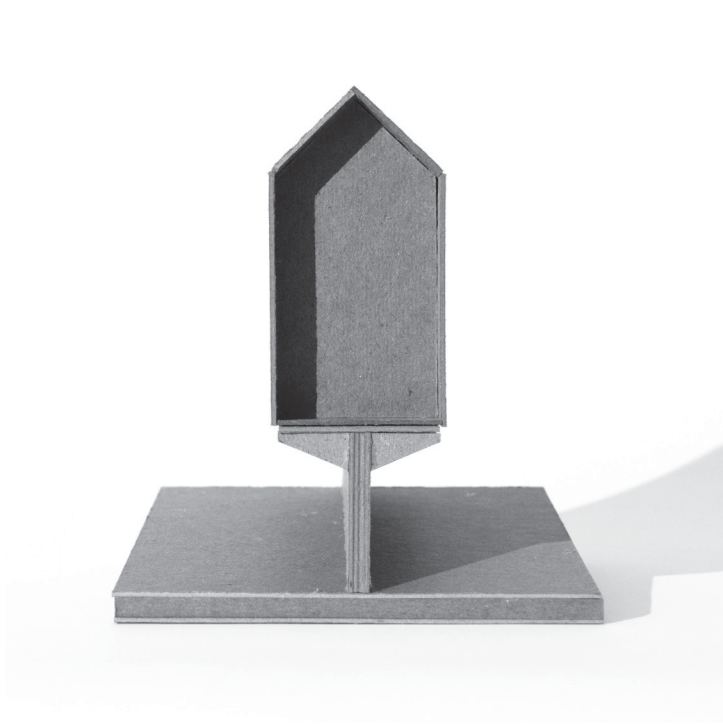
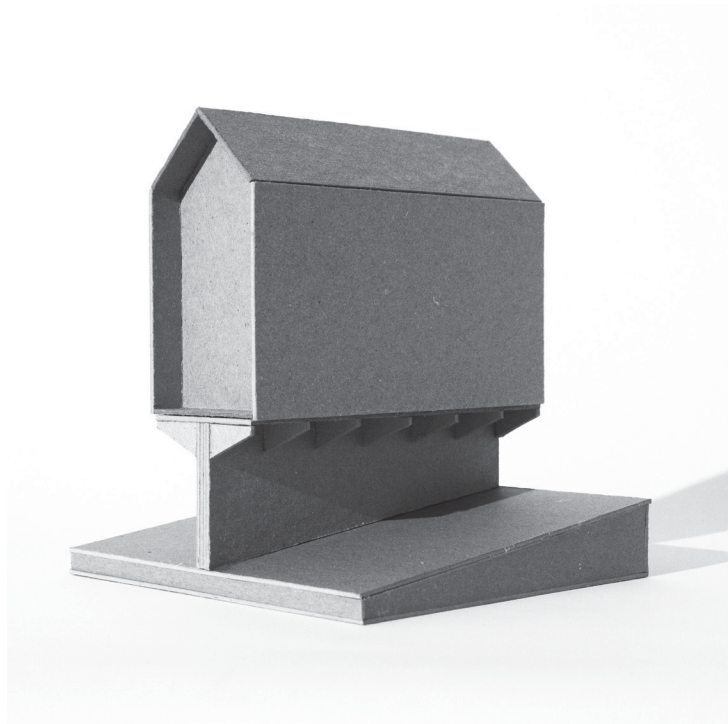
A vessel is meant to hold, to protect, and to keep safe. The word "naval" comes from the same word as "nave", as in the nave of a church. The word "berth" is most commonly used to describe the place where a boat is docked, or the safe space around a boat when it is at anchor. But it is also the place where one might sleep or reside on a boat. It can be simply used to describe a place for something.

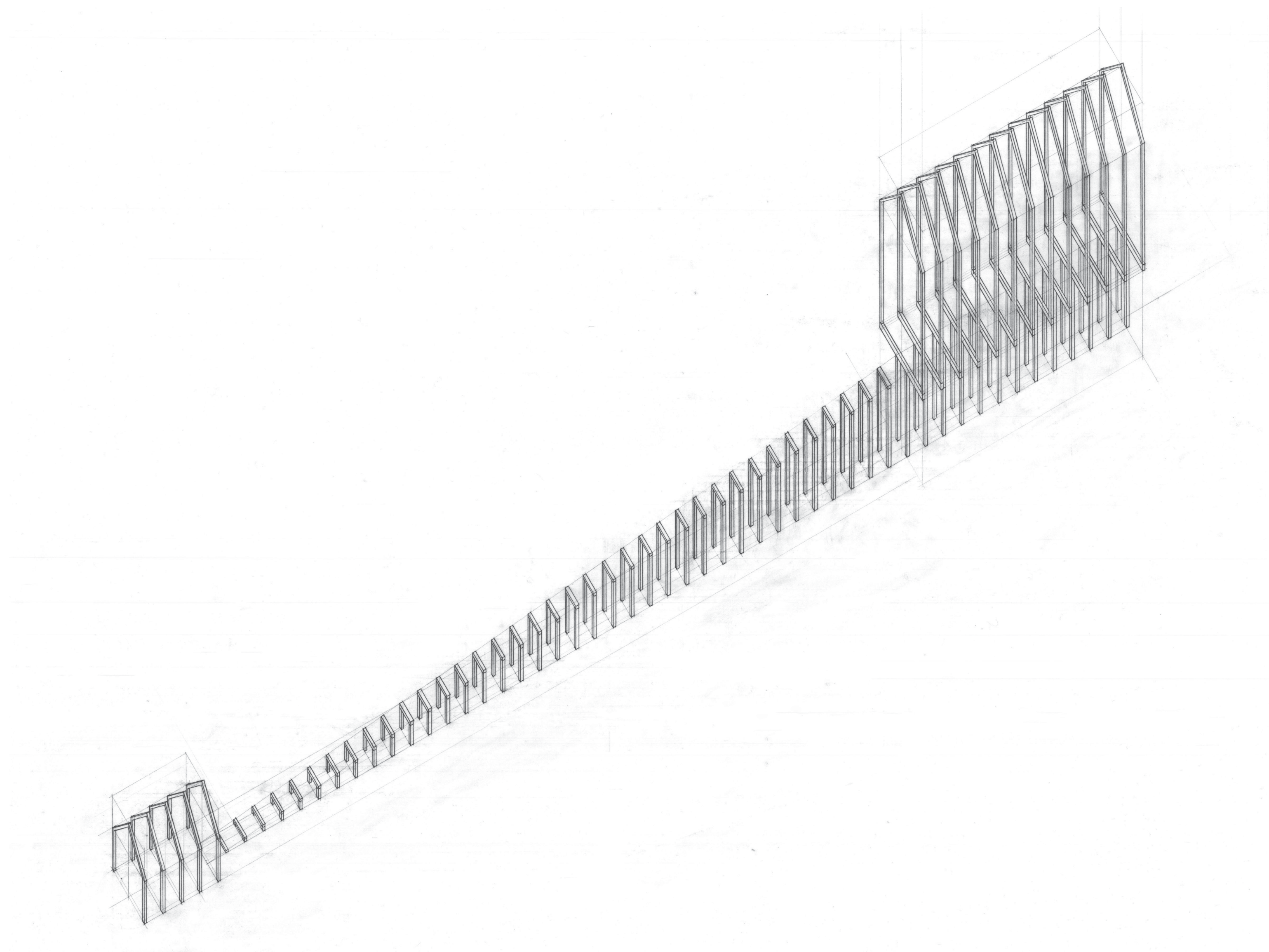
It is not surprising that both architecture and boat building carry so many similar qualities. In fact, in many places, craftsmen would often spend the summer months building boats and would build houses during the winter.

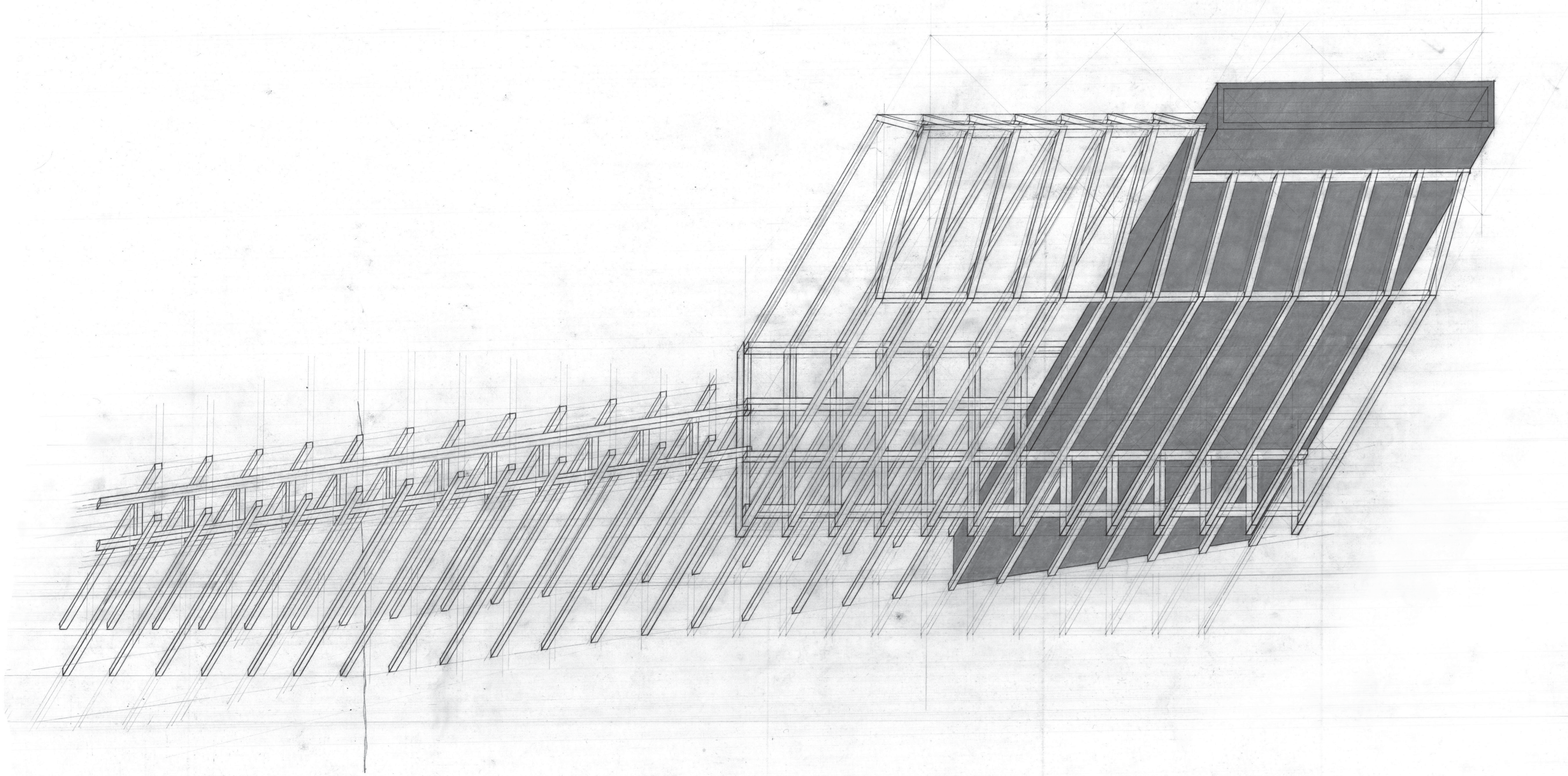


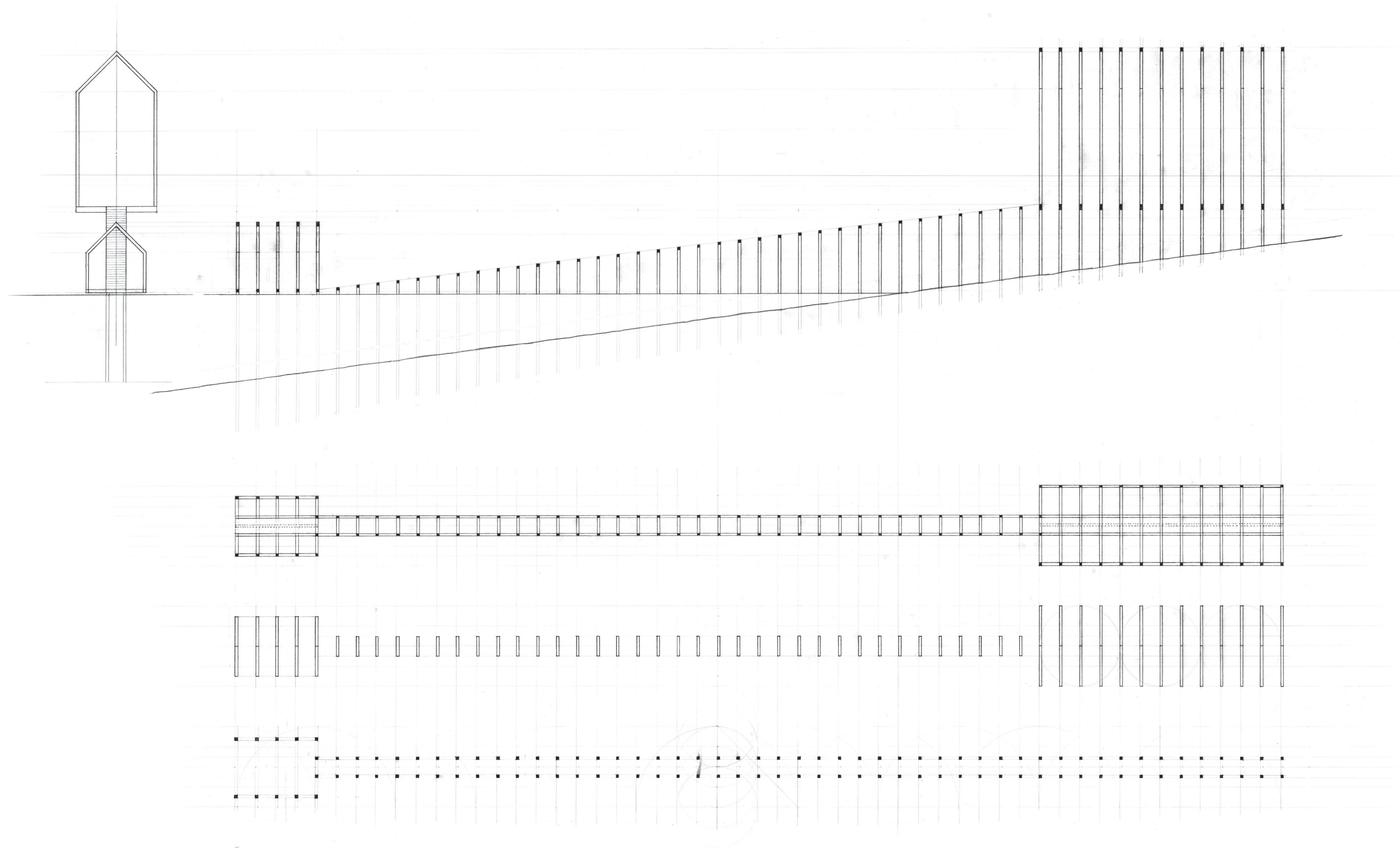


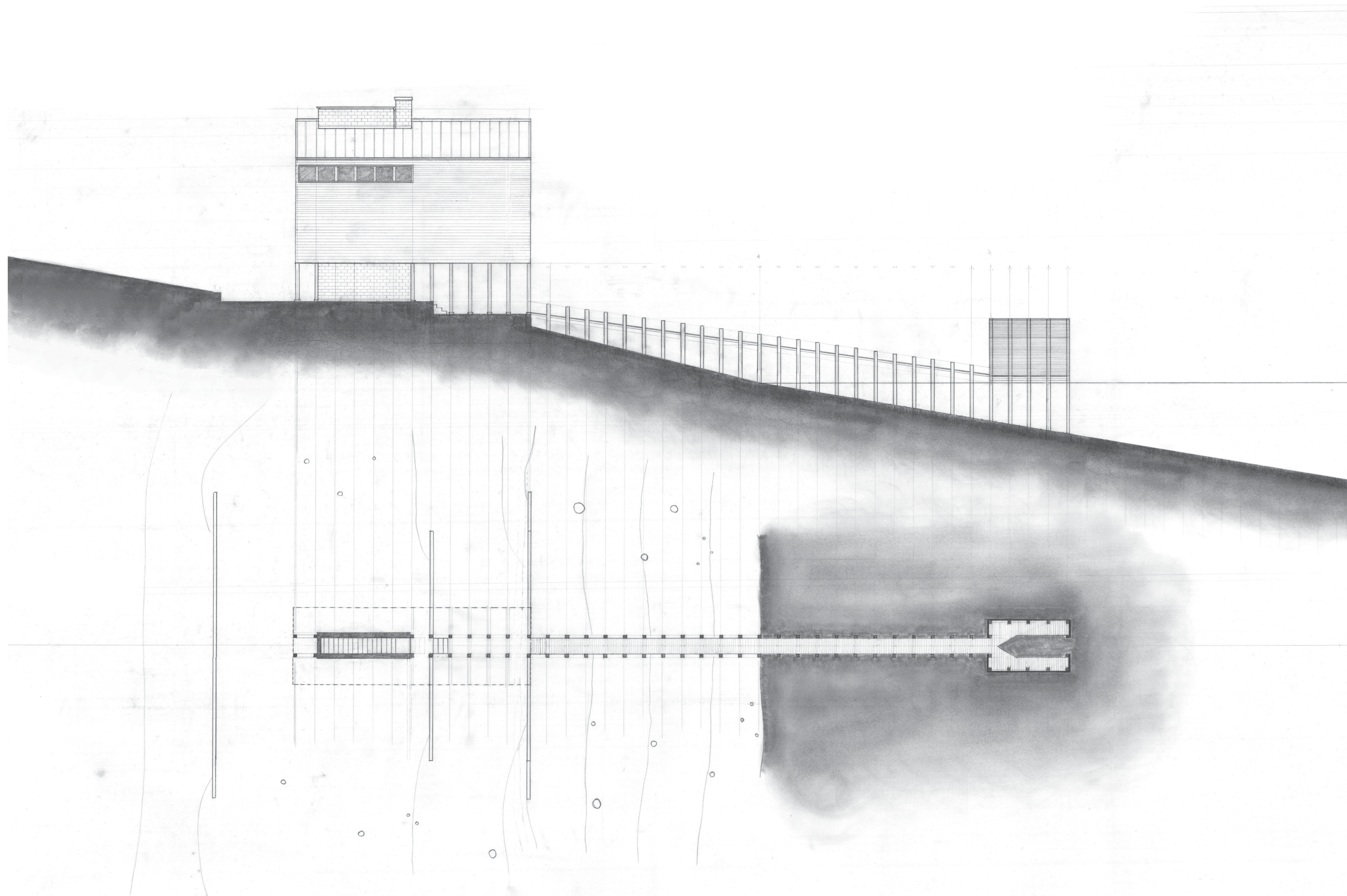
The wooden posts have flat sides below the walkway where they attach to other members, allowing a flat surface to join them together. They transition to a rounded profile to avoid the sharp edges where a person would come in contact with them along the walkway.

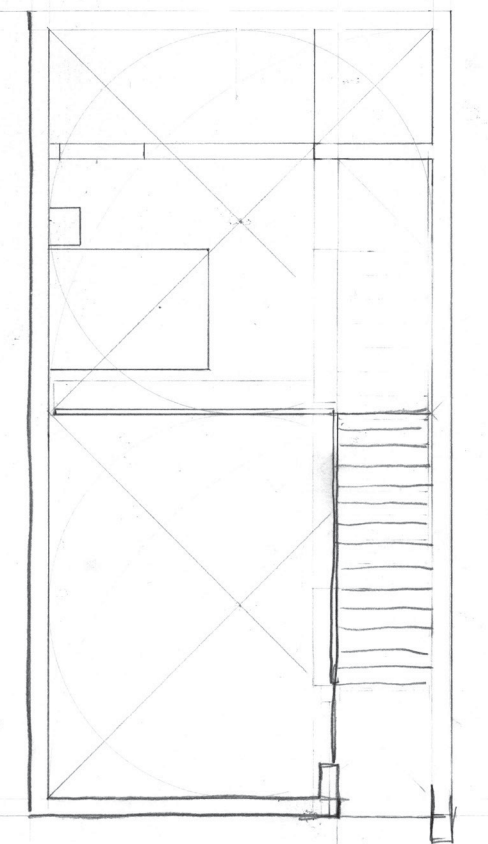
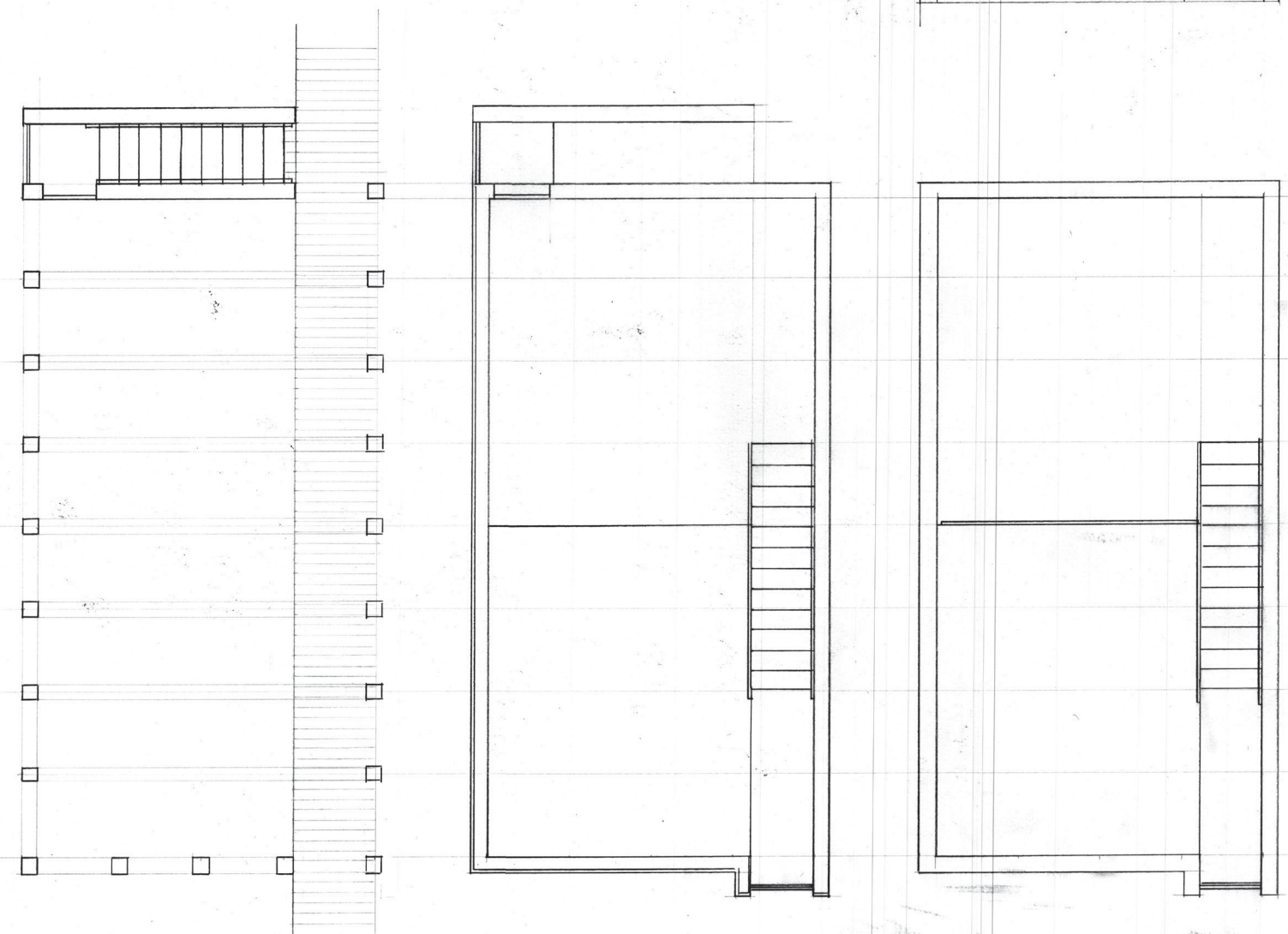
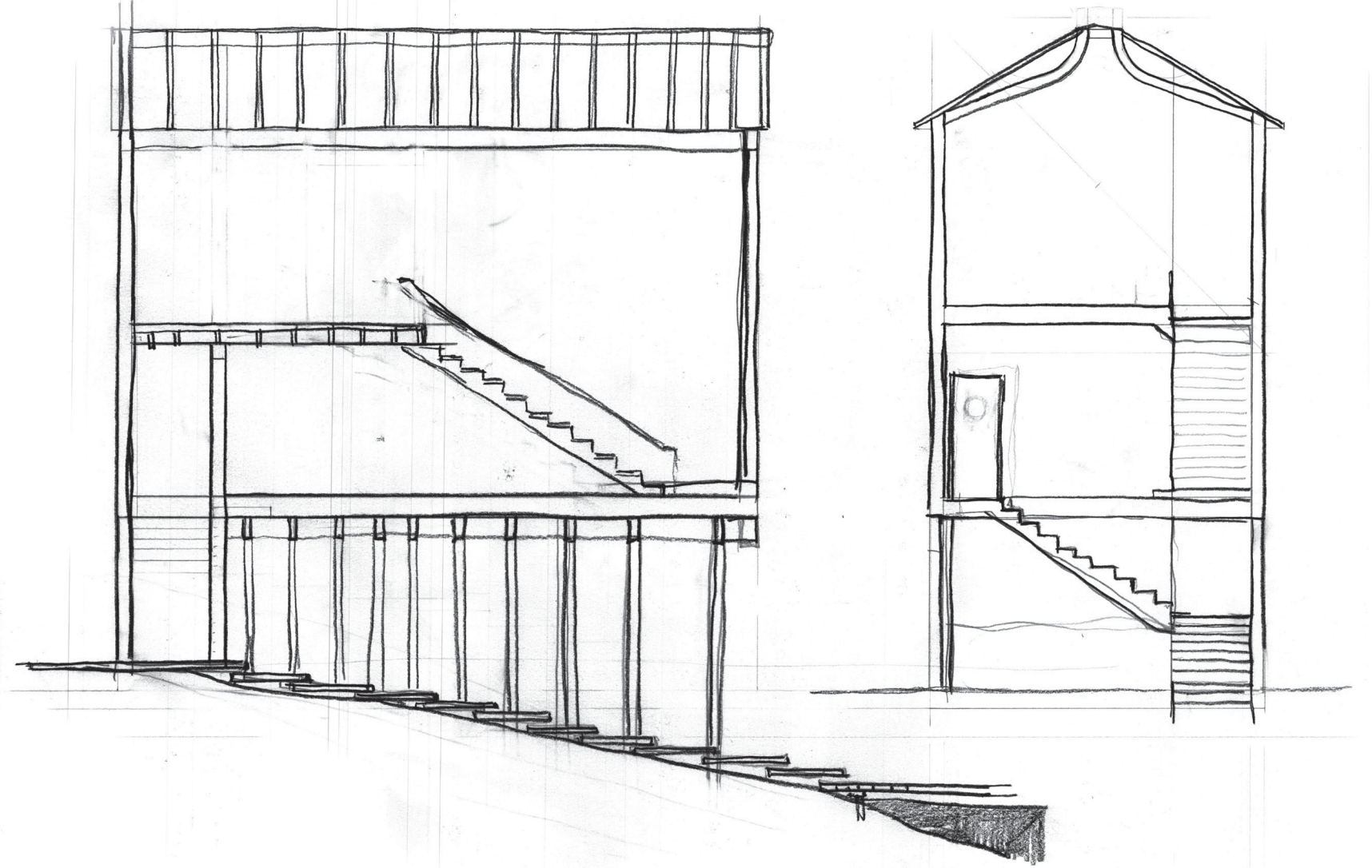
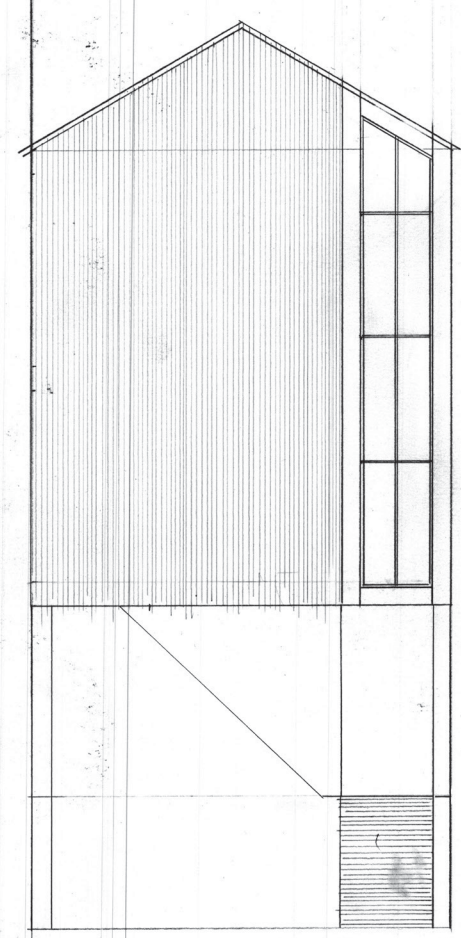
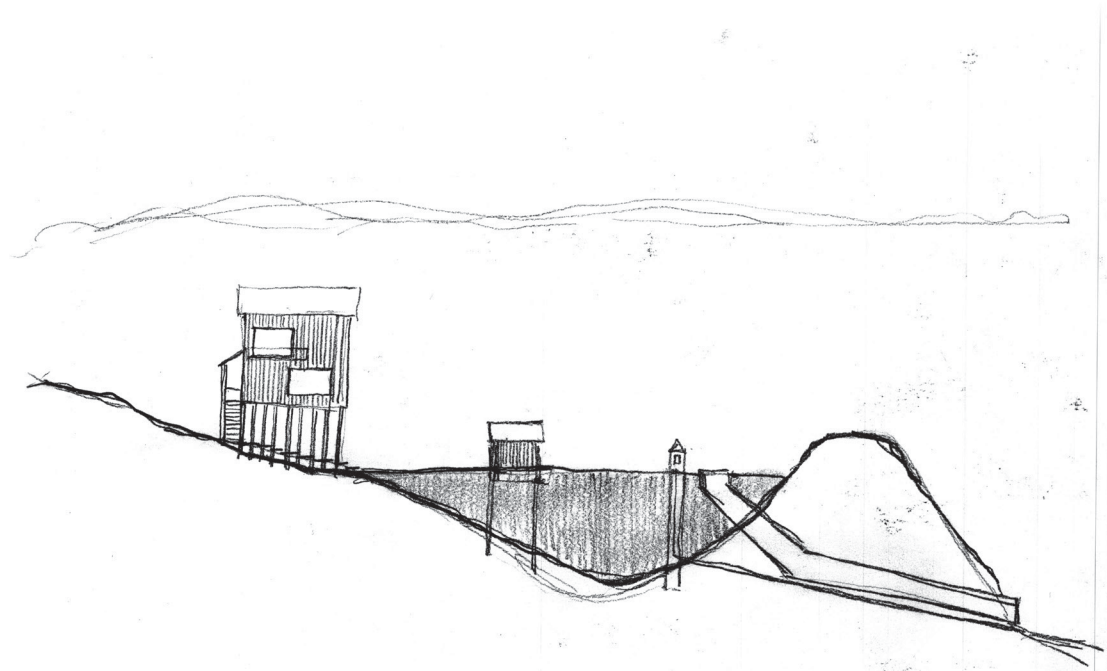


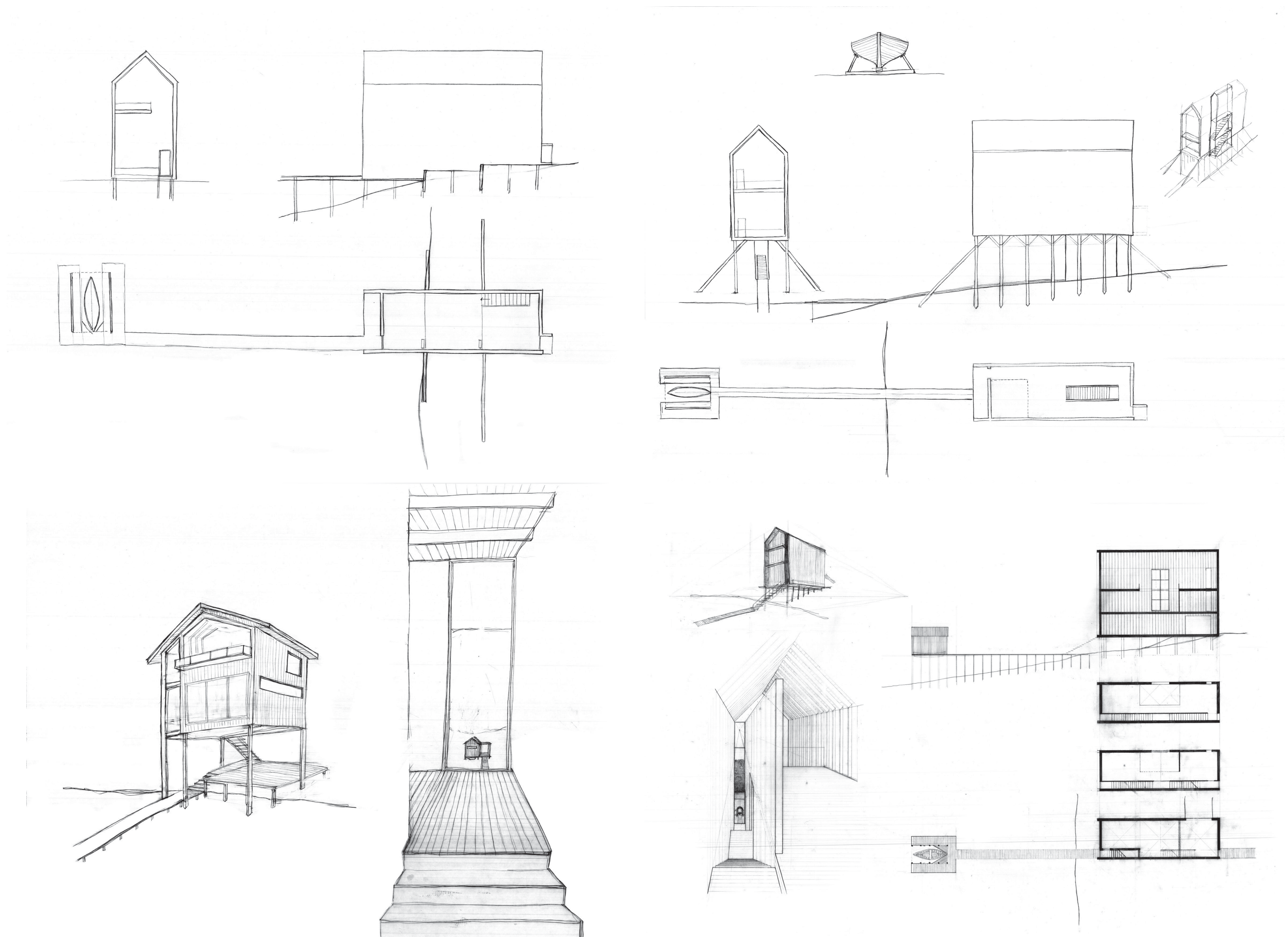




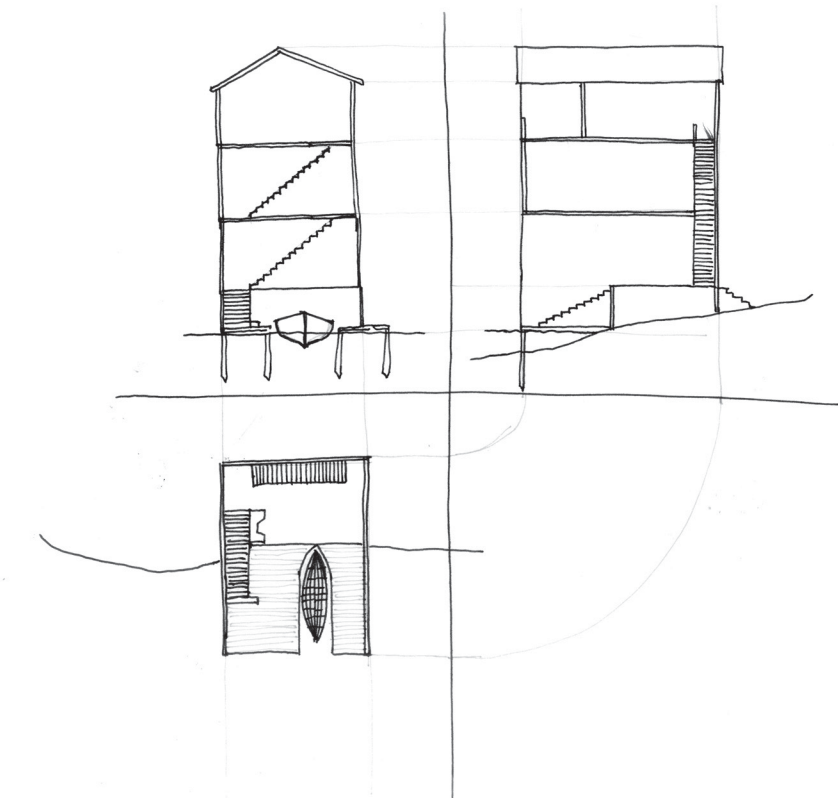
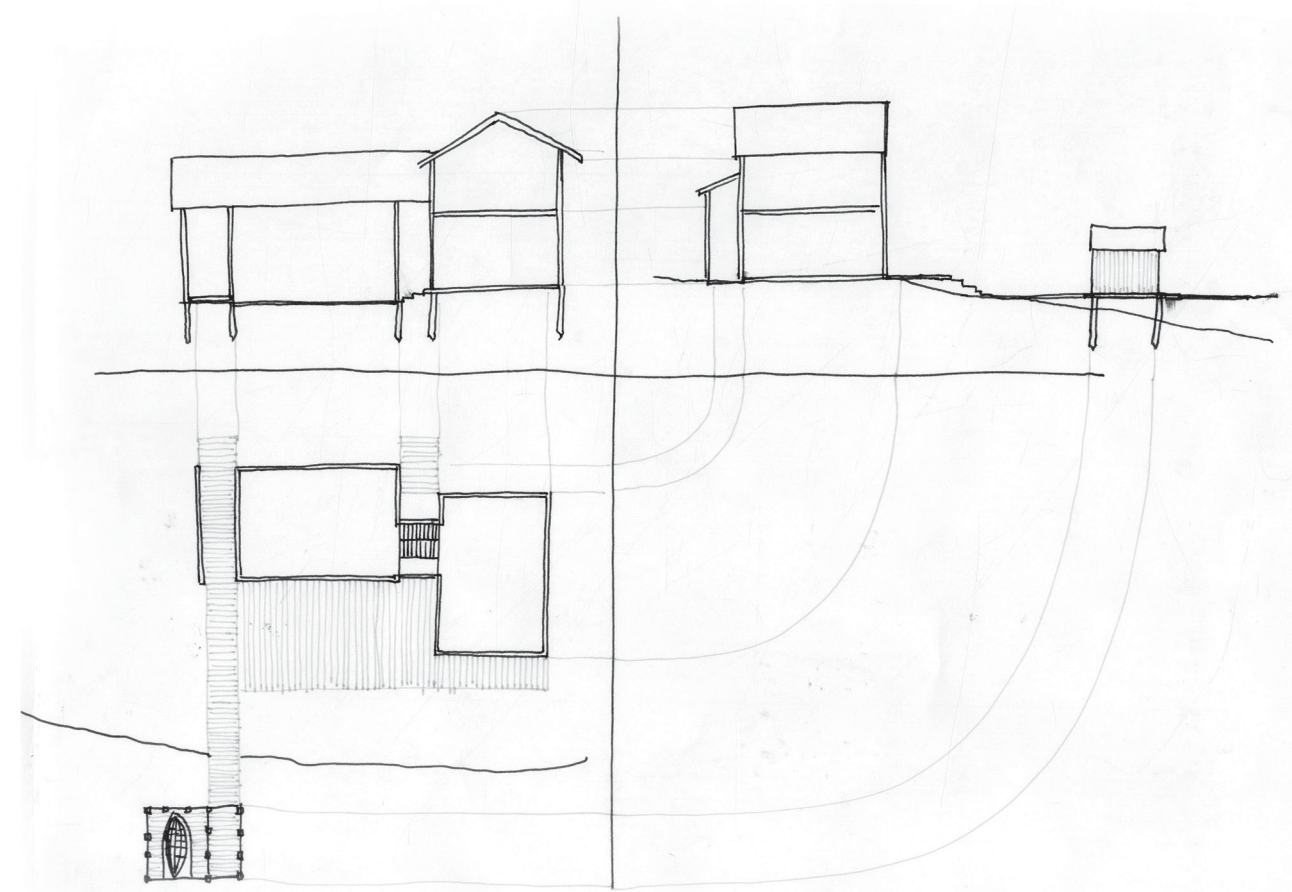
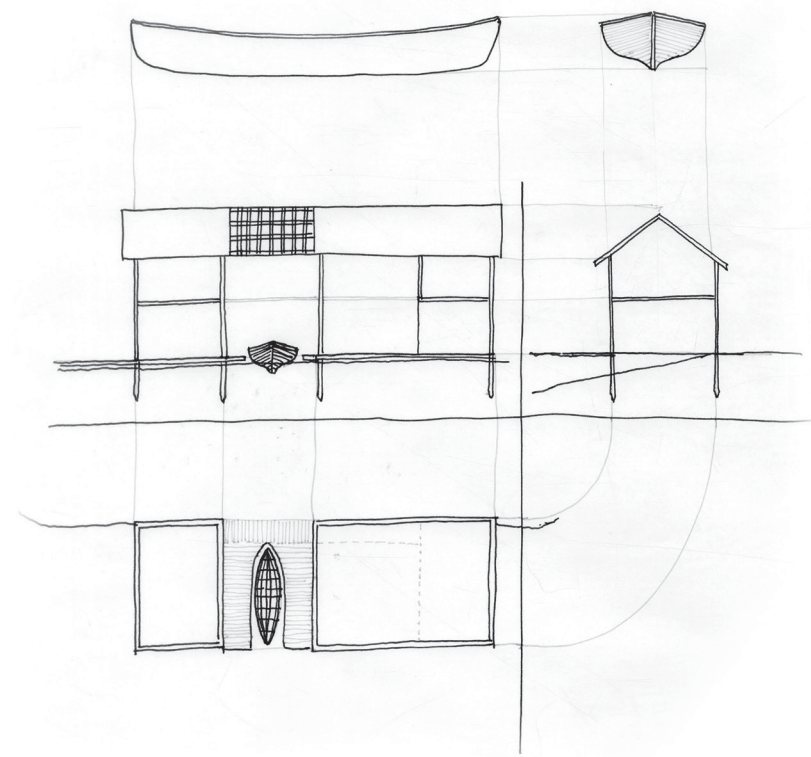








Variations of the supporting structure and how the boat and boat shelter might be seen from the house. Elevating the house provides both a place to look down and out towards the water, the boat shelter, the mountains, and the sky. Repetitive frames not only give structural strength, but encourage one's focus out.



Thoughts about the way in which the boat can become part of the house.

