

Fantasy Library

Liu, Zilu

Thesis submitted to the faculty of the Virginia Polytechnic Institute and State University
in partial fulfillment of the requirements for the degree of

Master of Architecture
In
The School of Architecture+Design

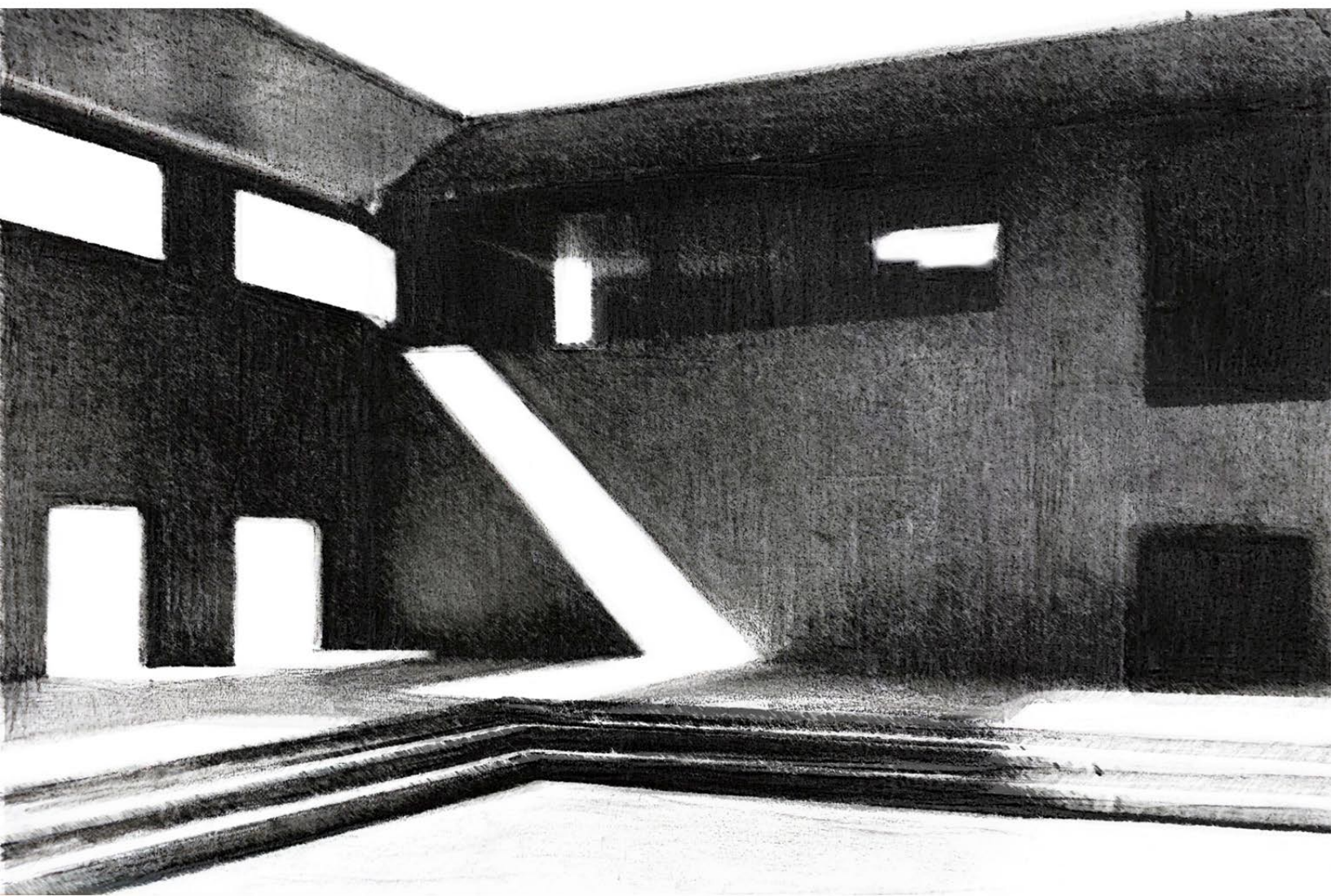
Kay Edge
David Dugas
Jim Bassett

April 9th 2019
Blacksburg, VA

Abstract

Now days, there are a lot of magnificent concrete buildings in the city, so do the library, the library in China always design as supremacy of authority, there is no funny and relax atmosphere, it's so hard to get alone with them.

I wonder if there has a library can be a garden, I am trying to combine some Chinese classical garden element to my library design, create a comfortable environment for people who reading books, and pay more attention to the people's feelings.



Content

1. Introduction 4-8

There is a memory

2. Start a dream 9-14

So many magnificent buildings around city

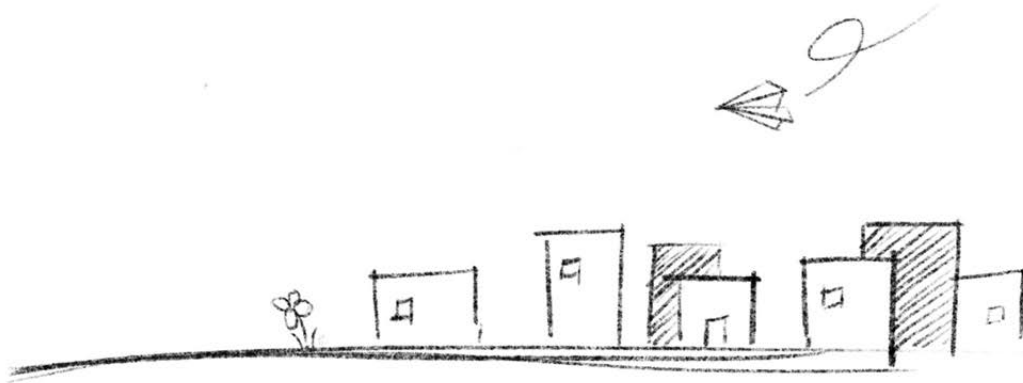
3. Preliminary work 15-28

Chinese classical garden, intention and elements

4. Project 29-56

A library journey

1. Introduction





In 2011, we finished “College entrance examination” and graduated from high school.

Finally, we can throw all books away and get rid of the heavy work, in that time, it was so hard to stay in classroom over 12 hours everyday, with no break over the weekend. We had to remember so many ancient poems and formula with math.

At that time, we hated reading books and forgot how to enjoy reading.



"Reading", it's not romantic: the book is like the task that needs to be taken, like the hill that needs to be conquered. We grew up in that environment and few people really enjoyed reading.

Reading can be exciting and happy, and we don't even know it. After graduating, for many years, I realized we missed too much enjoyment at that time!



Nanjing Library



Xian Library



From: <http://image.baidu.com> Shanghai Library

About books, it will be associated with the library, most of the libraries in China were designed to represent the sacred and authority. They were to be the symbols of national pride and knowledge. We are too small to embrace them. The joyful experience did not exist in there.



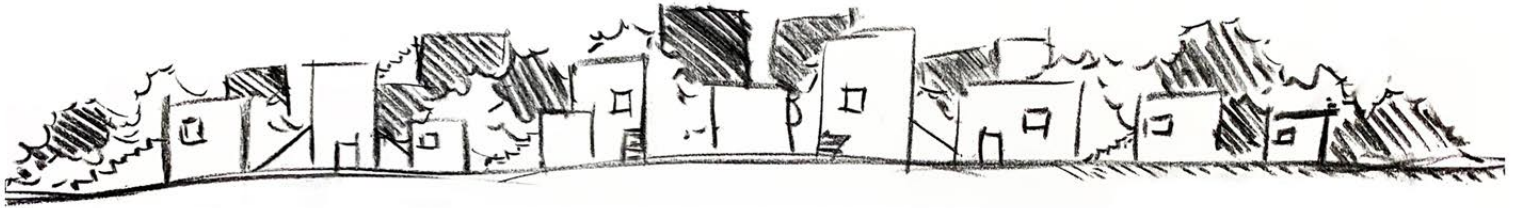
From: <https://tvyou.baidu.com/guojiatushuguan>

I went to the “National library of China”, the building is magnificent. A giant public reading area, straight regular lines, shaped like an inverted pyramid.

It symbolizes the sacredness of knowledge and the supremacy of authority. I think reading books should be a relaxing activity. But the library has a imposing atmosphere, that makes me hard to relax.

In “National Library” , a lot of people are busy with laptops, mobile phones, or napping with their heads on the table. Only a few people are reading books. The nominal library has become an office or study room.

2.Start a dream





Exeter Library

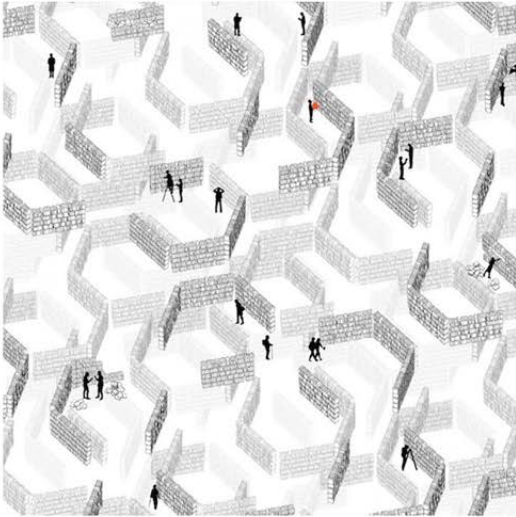


From: <https://www.reddit.com>

The large-span glass window on the west side absorbs natural light. In this 50-square-foot space, visitors can view metal shelves and readers through a large hole in the 7-story wall, and the hole opens almost to the edge of the square wall.

Kahn also uses stone and slate indoors and natural wood as interiors. Compared with stone, wood gives space a warmth, and when natural light pours into this natural material, its pleasing color welcomes readers.

I imagine being in the Exeter library of Louis Kahn, the space will change when I walk around, in contrast to the dull and boring libraries I have walked in reality.



From: https://www.thepaper.cn/newsDetail_forward_1326921

I read a short story named “Babel Library” by Jorge Luis Borges. He said “If there is heaven, it should be the look of the library”.

The library consists of a number of uncertain, perhaps infinite, hexagonal corridors. Each hexagonal wall has five bookshelves.

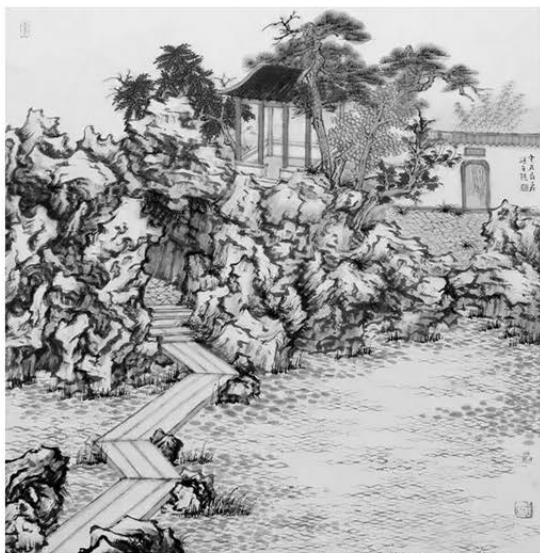


Cowgill Library

Although the library in reality makes me disappointed, I happened to find some amazing reading corners, like the Cowgill Library.

Its floor-to-ceiling windows let the natural light into the room, although sitting in the room, it is not isolated from the vitality of the outdoor.

This corner let me remember my childhood, in the break of the school time, we often go to our secret base, it's like a roof, we can overlook other buildings, trees, streets, and people moving slowly on the street. Every person has their own story.



From: <http://www.sohu.com>

居士高踪何处寻，居然城市有山林。

—清·王麋言《游狮子》

Where is the hidden trace, but the city has a forest.

Qing Dynasty, Wang Shuyan, "Stroll Lion Forest"



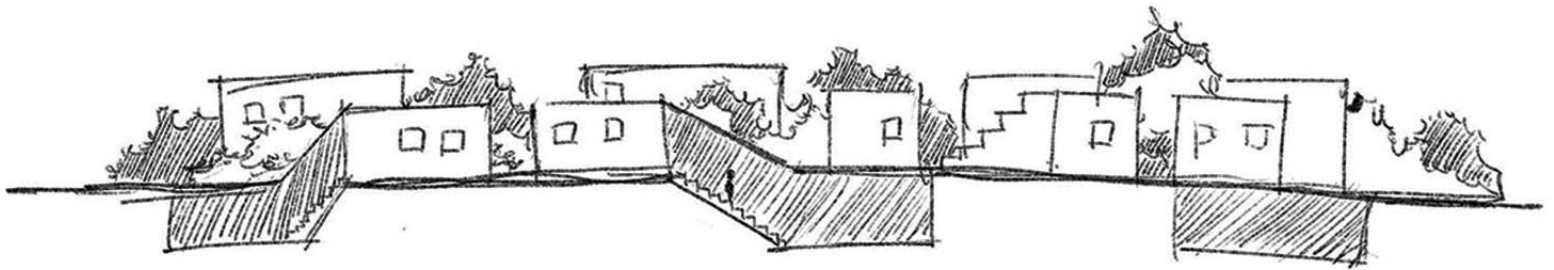
From: <http://www.sohu.com>

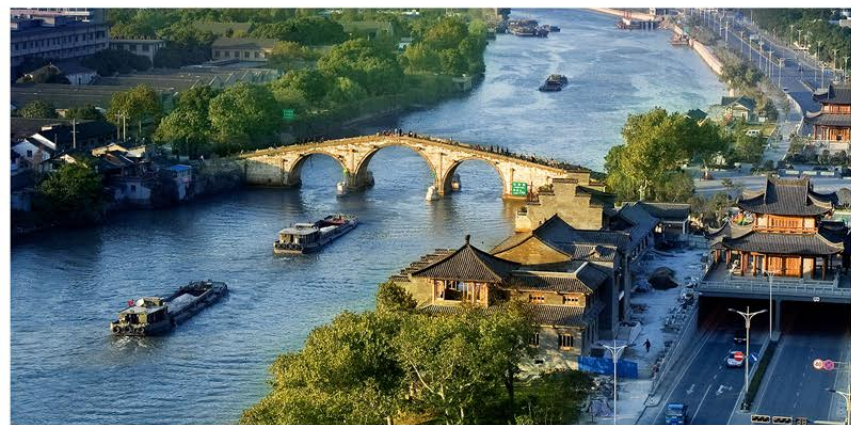
Chinese classical garden has so many interesting element; like slope, gallery, trace , cave and symbolic mountains.

when I recalled the scene, I realized that not everyone likes to stay in the house reading books. It is also pleasant to read outdoors. siiting on the soft grass, or shaded bench, and open the books.

So I think if I can design a library like a garden?

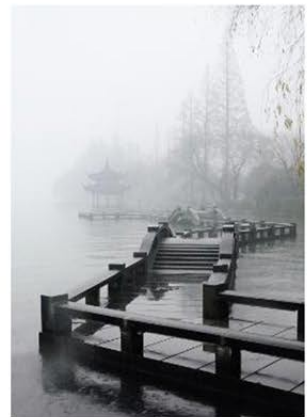
3. Preliminary work





Hangzhou is located in the south of China, Hangzhou was established in Qin Dynasty and has a long history more than 2,200 years. It is one of the birthplaces of Chinese civilization. As early as 4,700 years ago, human beings thrived here and produced a Liangzhu culture called the dawn of civilization.

Hangzhou's climate is subtropical monsoon climate. There are four seasons distinct. The temperature is mild and humid, Hangzhou also has abundant sunshine and rainfall.

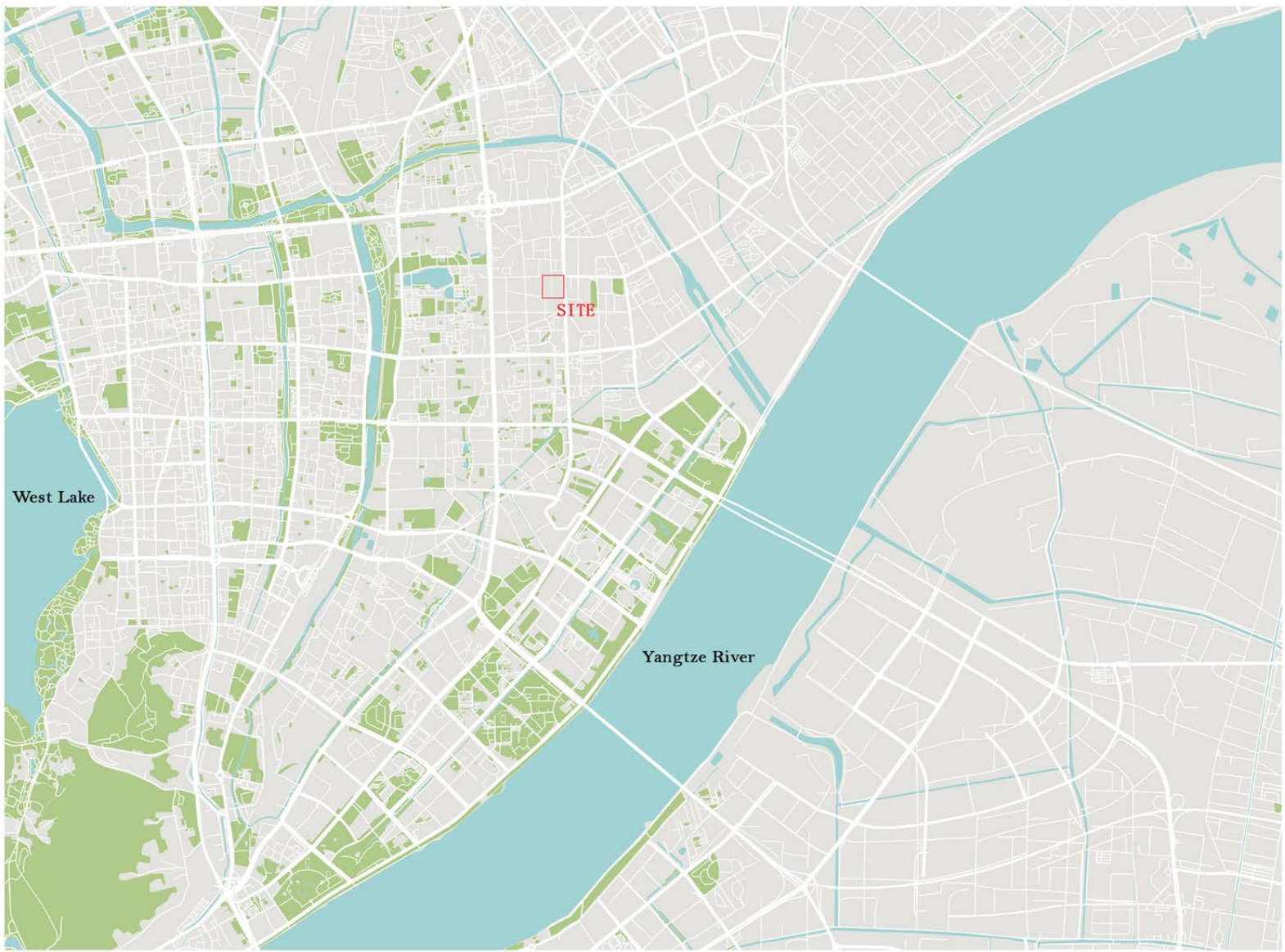


Hangzhou has a natural environment where rivers, lakes and mountains blend. There are Qiantang River, Dongpu River, Beijing-Hangzhou Grand Canal, Xiaoshao Canal and Shangtang River.

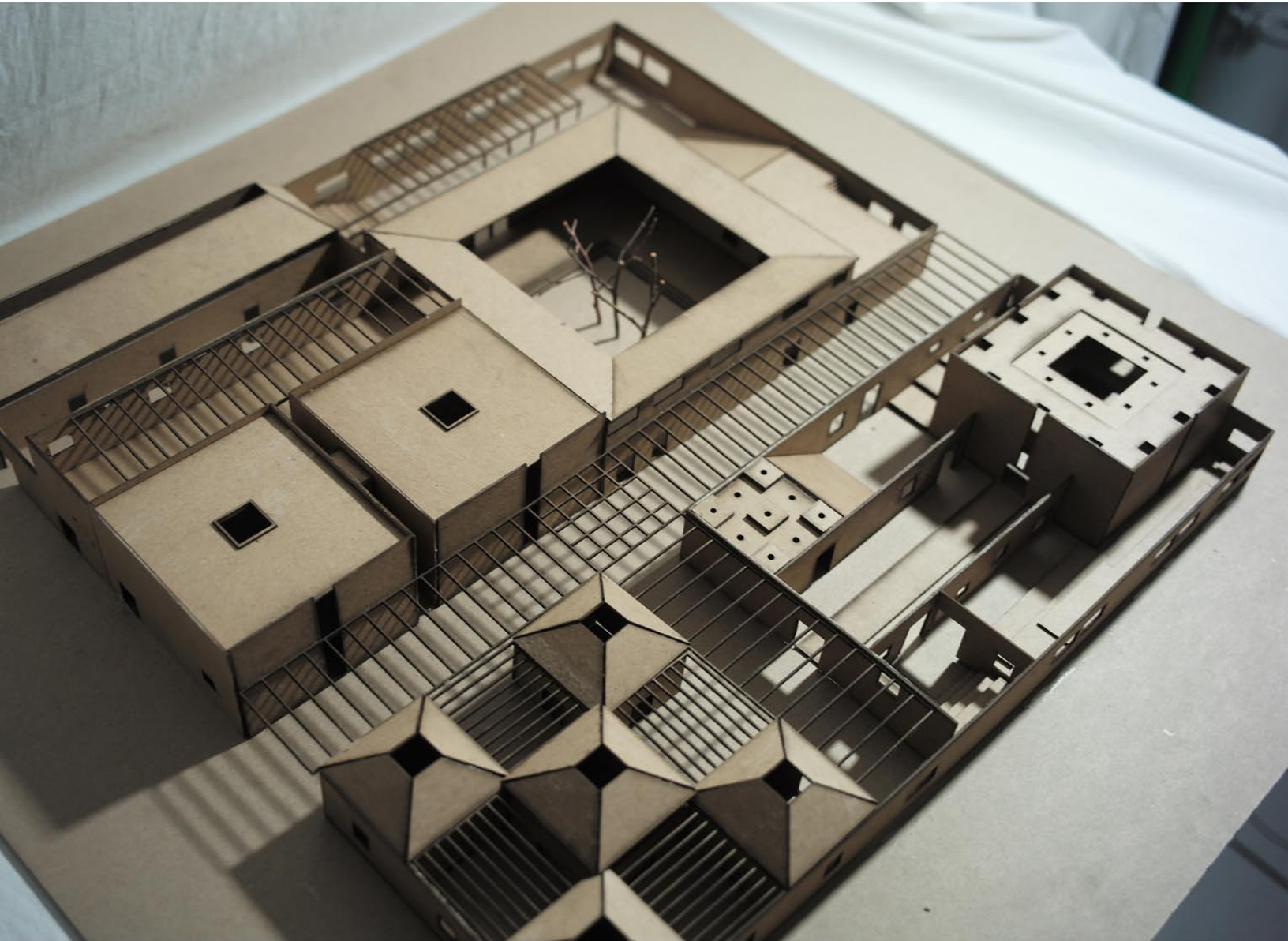
From: <https://www.travelking.com>



On the west of the site is Zhejiang University; On the north of the site is residential area; On the east of the site are commercial buildings; On the south of the site are office buildings.



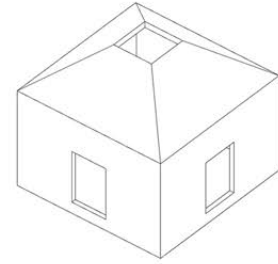
The site is in low terrain.
It is surrounded by a lot of commercial areas,
The Yangtze River is on the east of the site; Zhejiang University and West Lake are on the west of the site; Residential area IS on the north of the site.



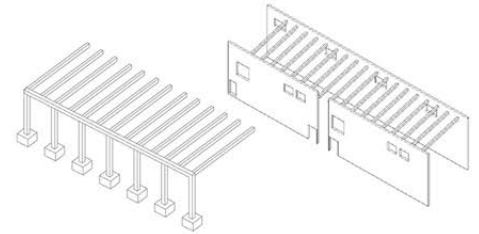
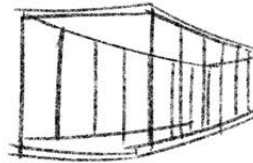
Study Model



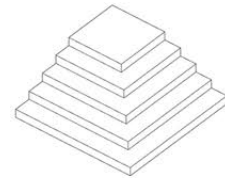
Pavilion



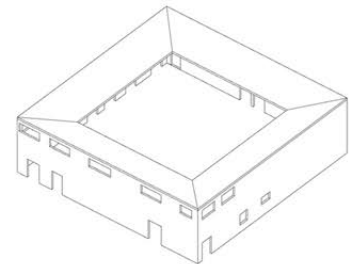
Corridor



Symbolic Mountains

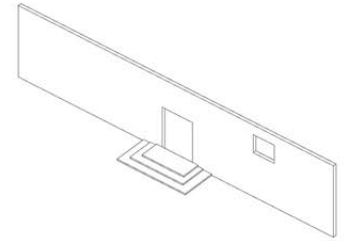
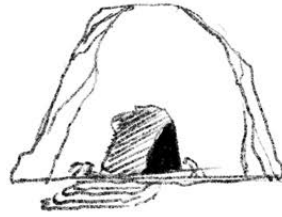


Countyard

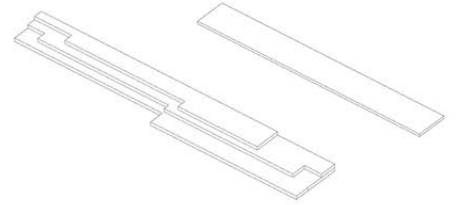
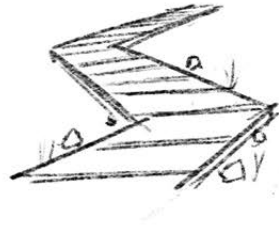




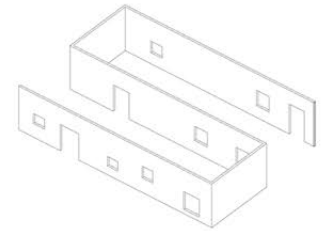
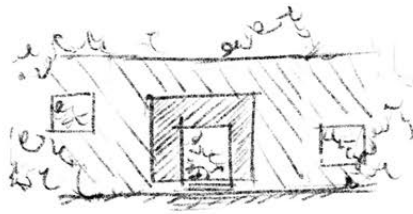
Cave



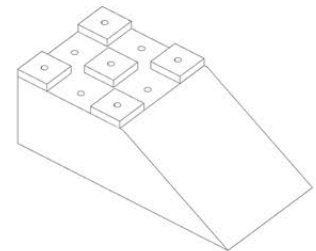
Path

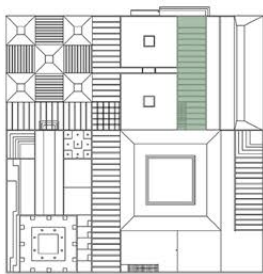


Wall

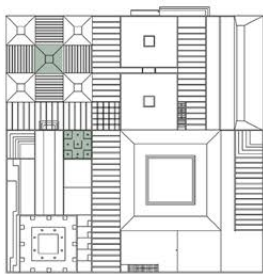
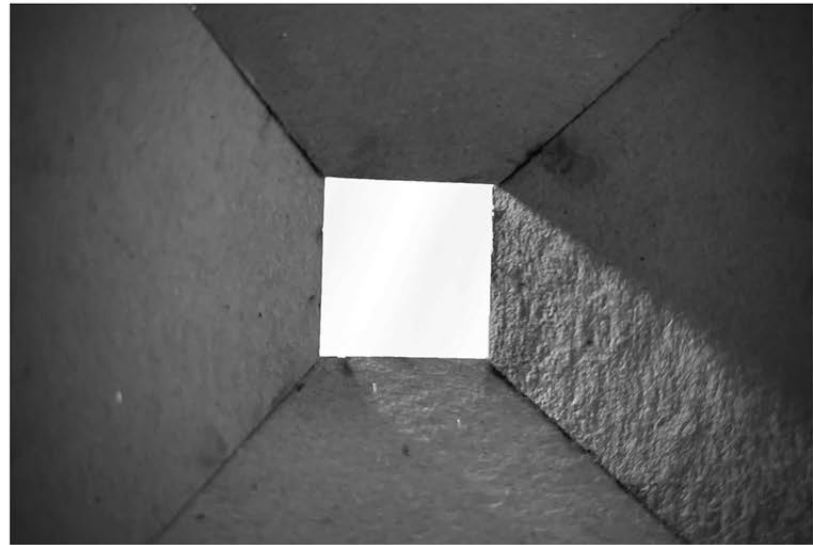
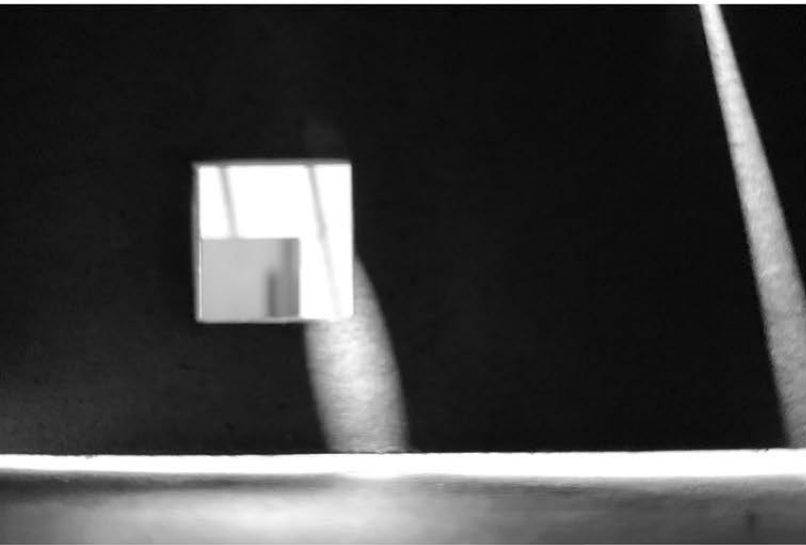


Shore

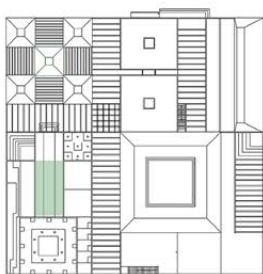
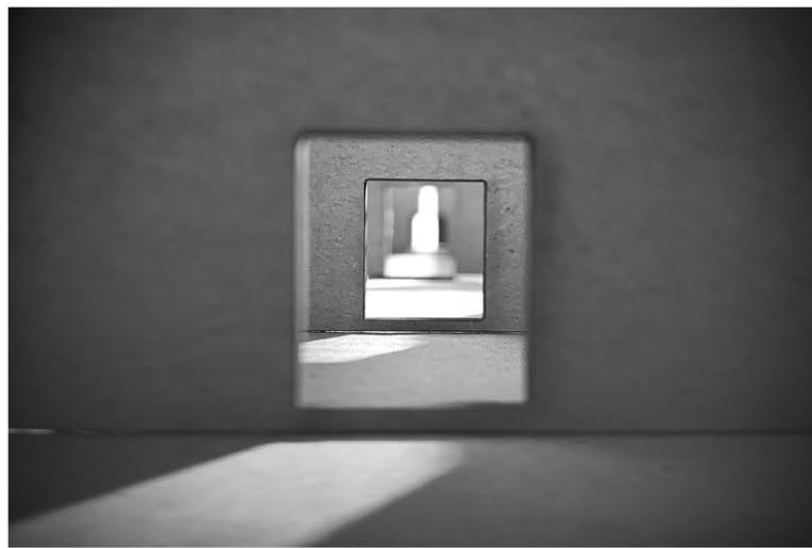
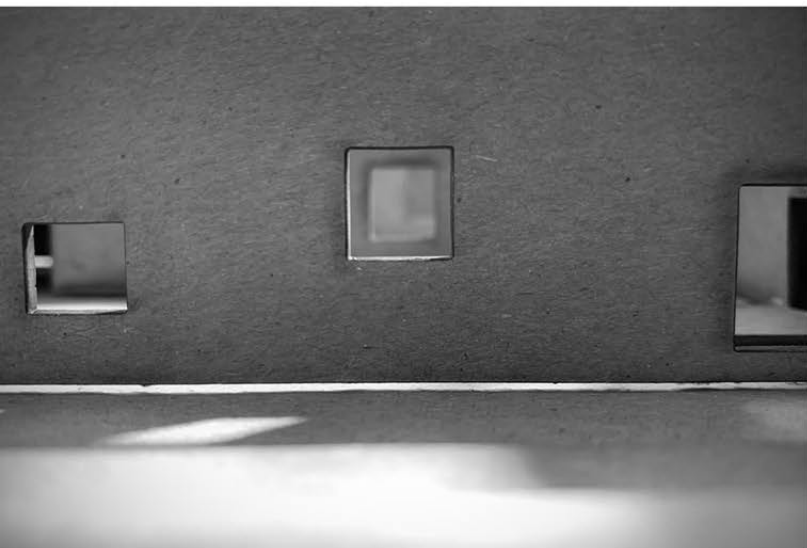




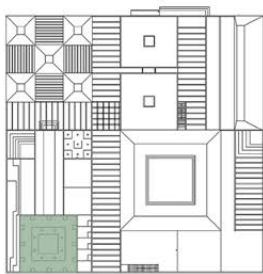
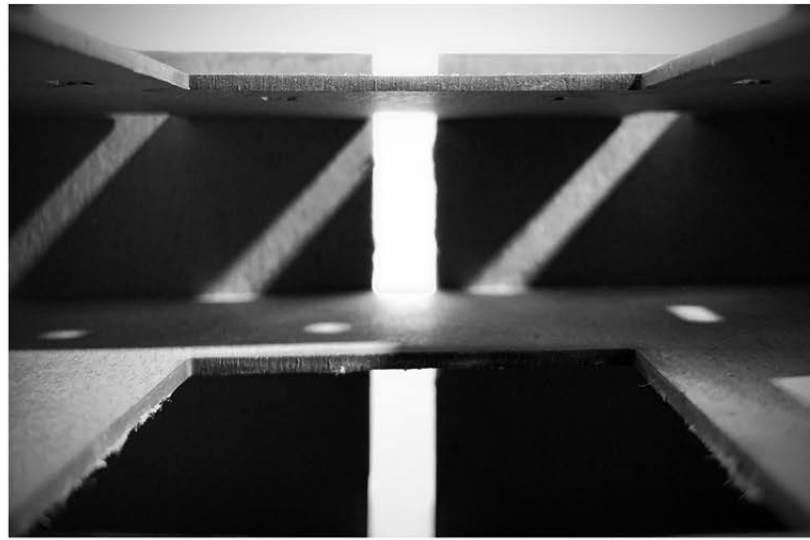
The sunshine comes in through the roof truss, and the reflected light sways slightly on the wall, quiet and charming.



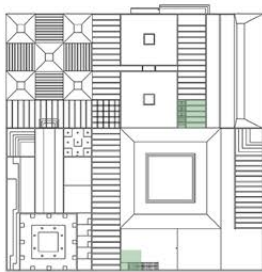
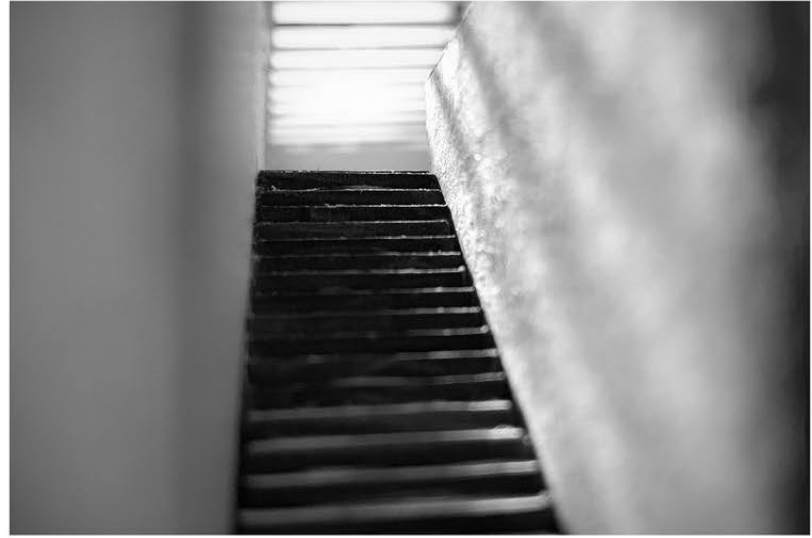
A beam of light pours through the roof, creating an meditative atmosphere.



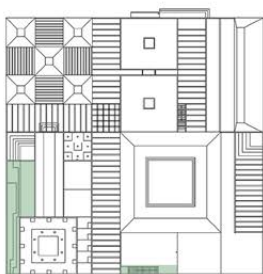
Multiple frames are nested inside each other to form a layered space.



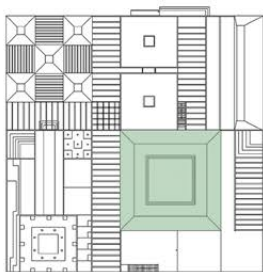
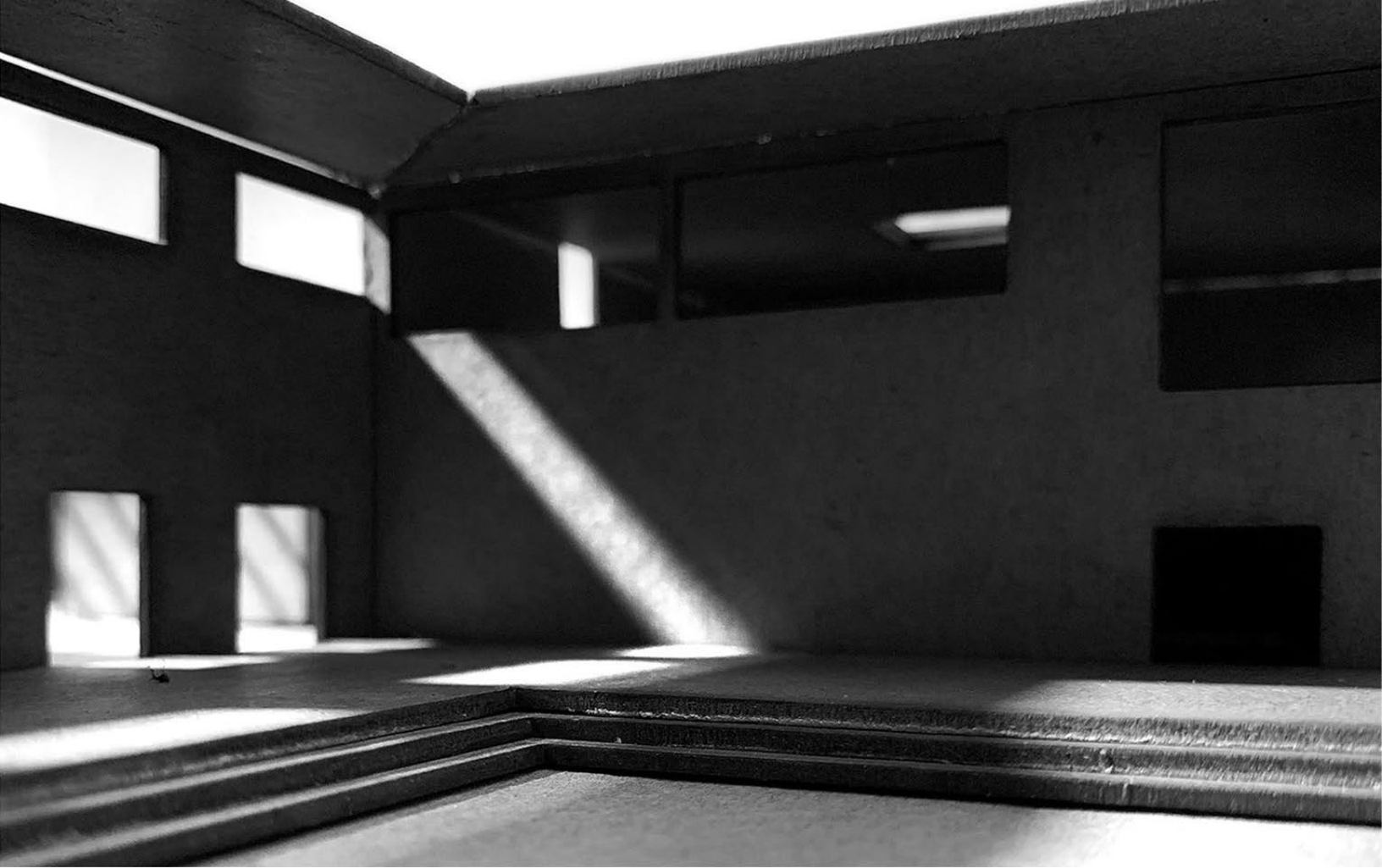
As the light changes, we can see different scenes in the same location, different atmospheres, and different stories.



The stairs will reveals a corner, but it implies a bigger speculation. What will happen behind the stairs?

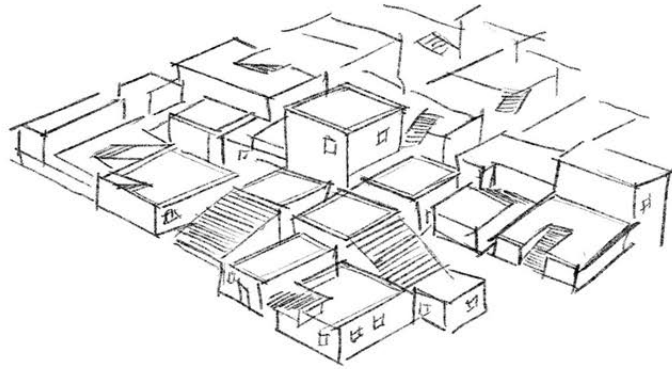


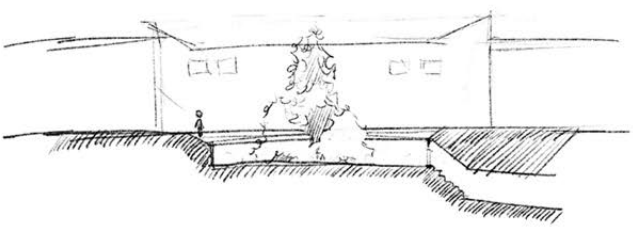
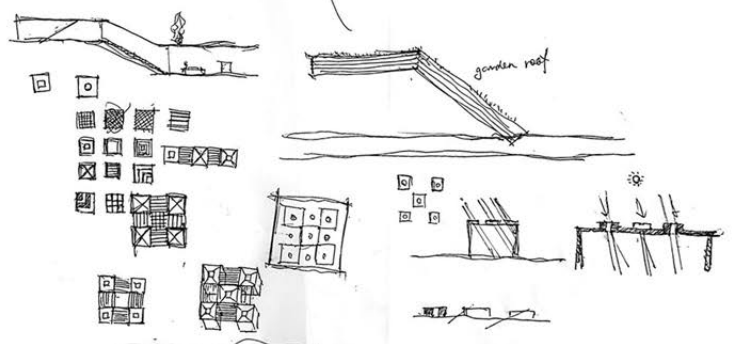
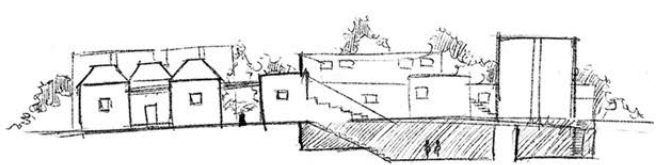
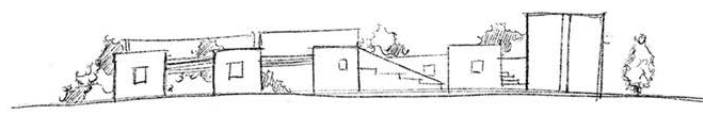
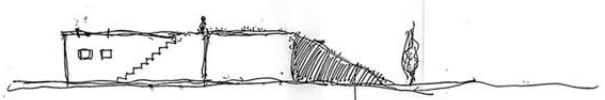
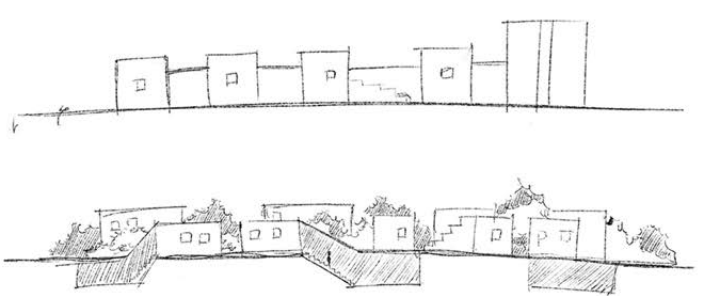
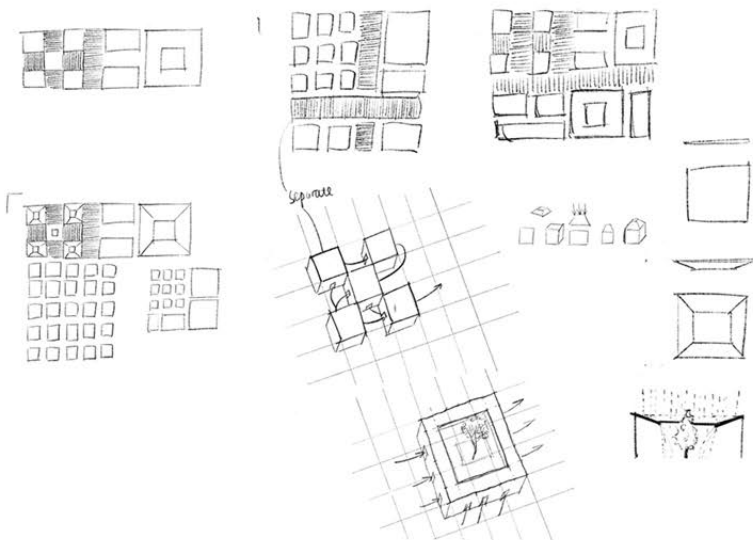
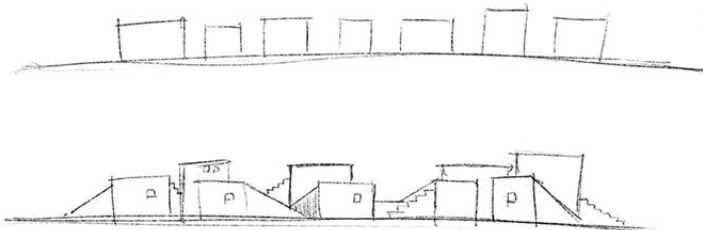
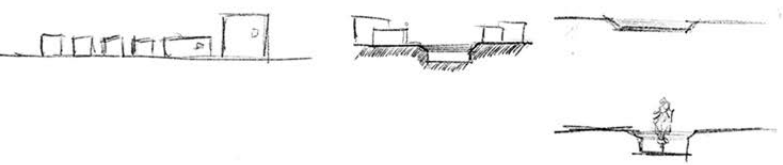
At the same place, different heights will give a different experience.



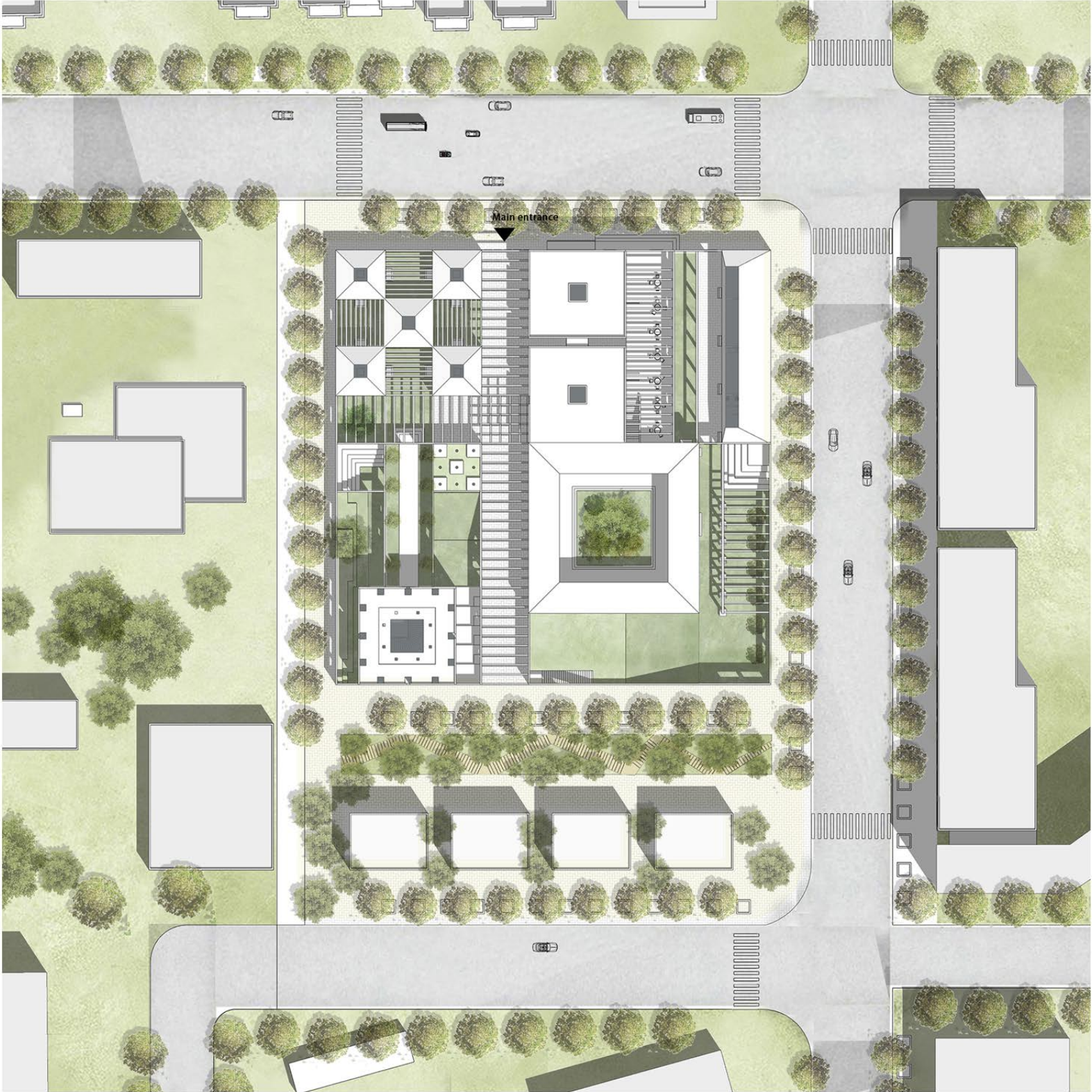
People can play or relax freely in the sinking courtyard.

4. Project

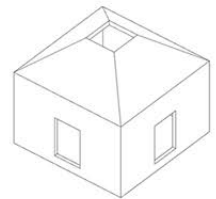
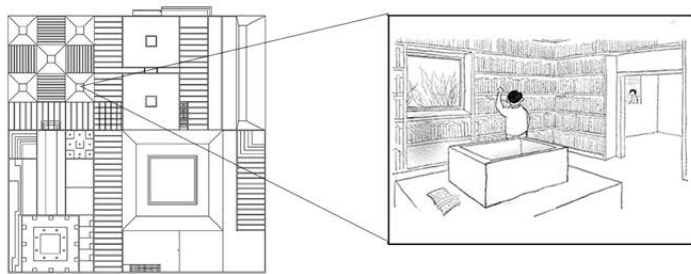
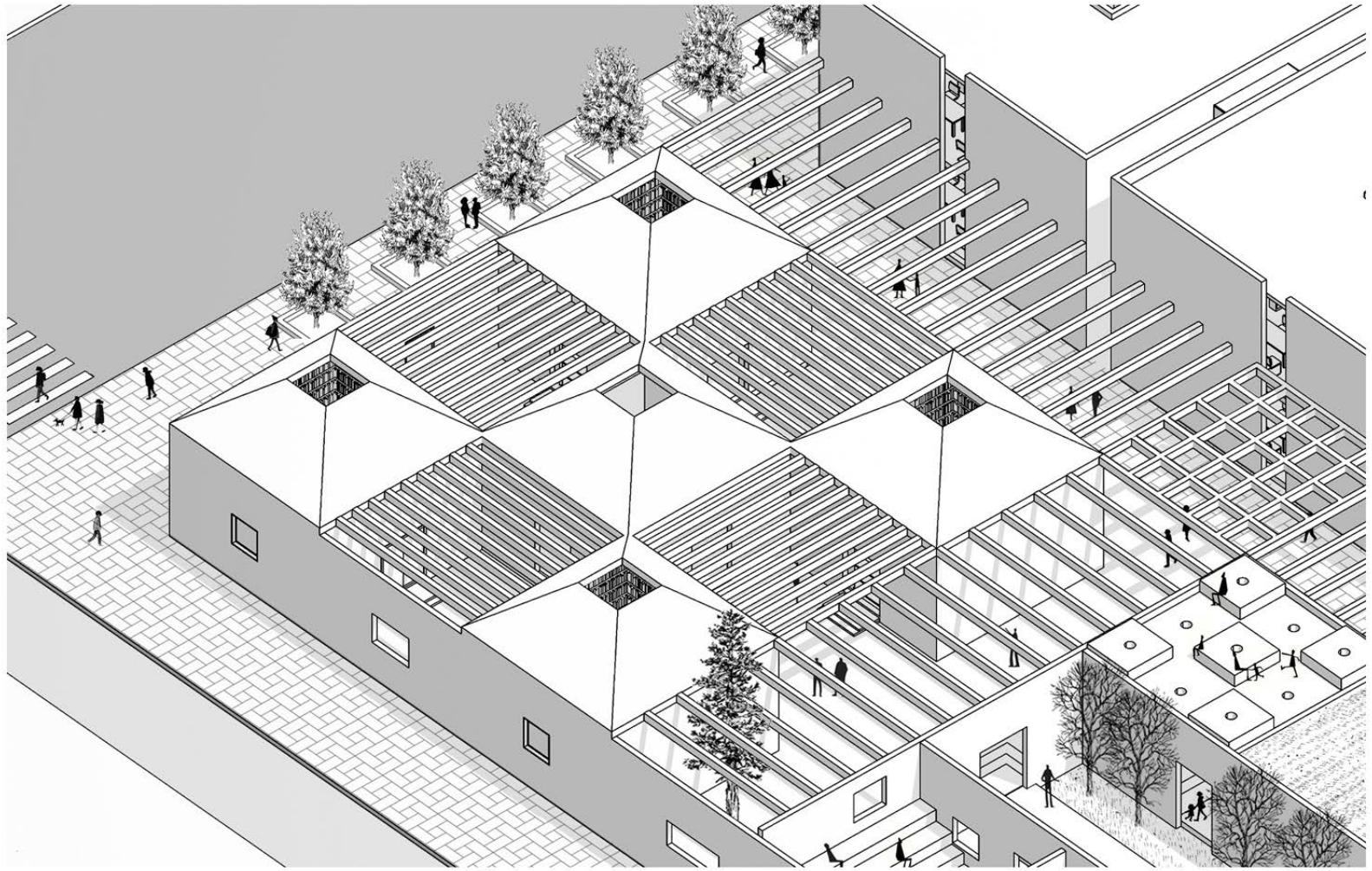


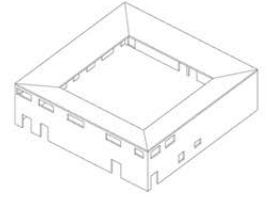
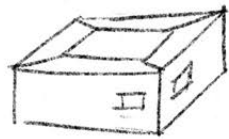
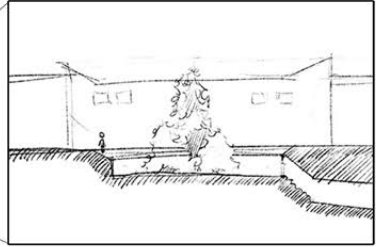
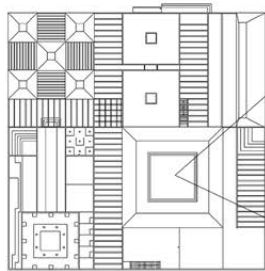
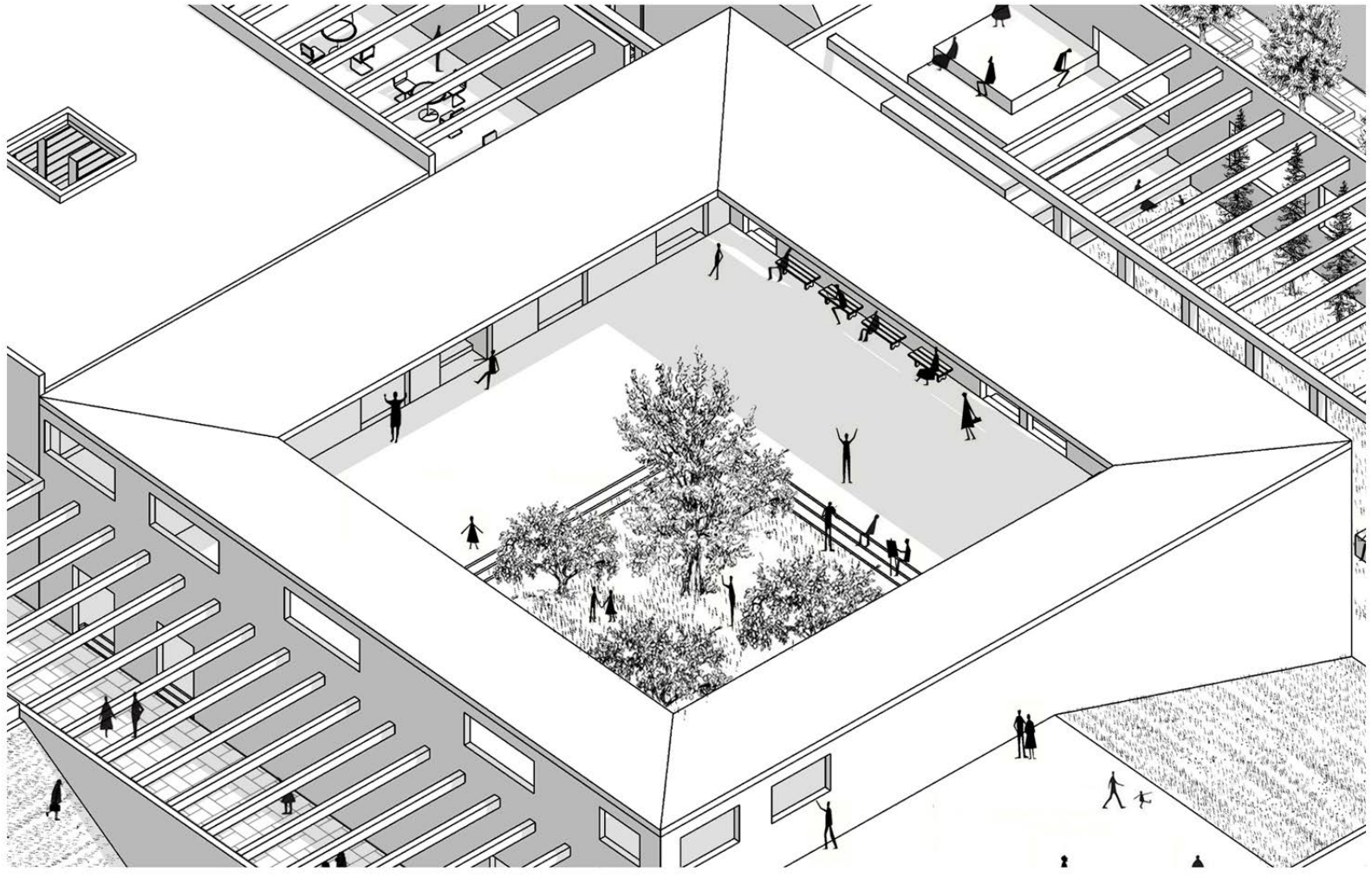


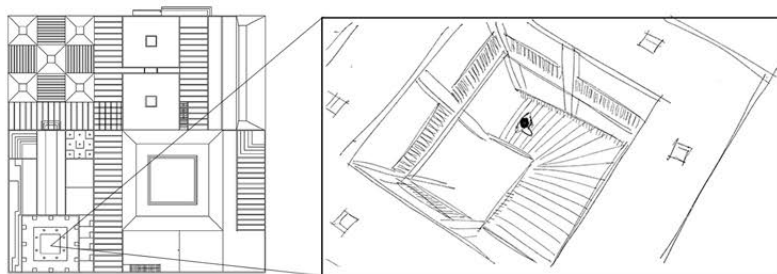
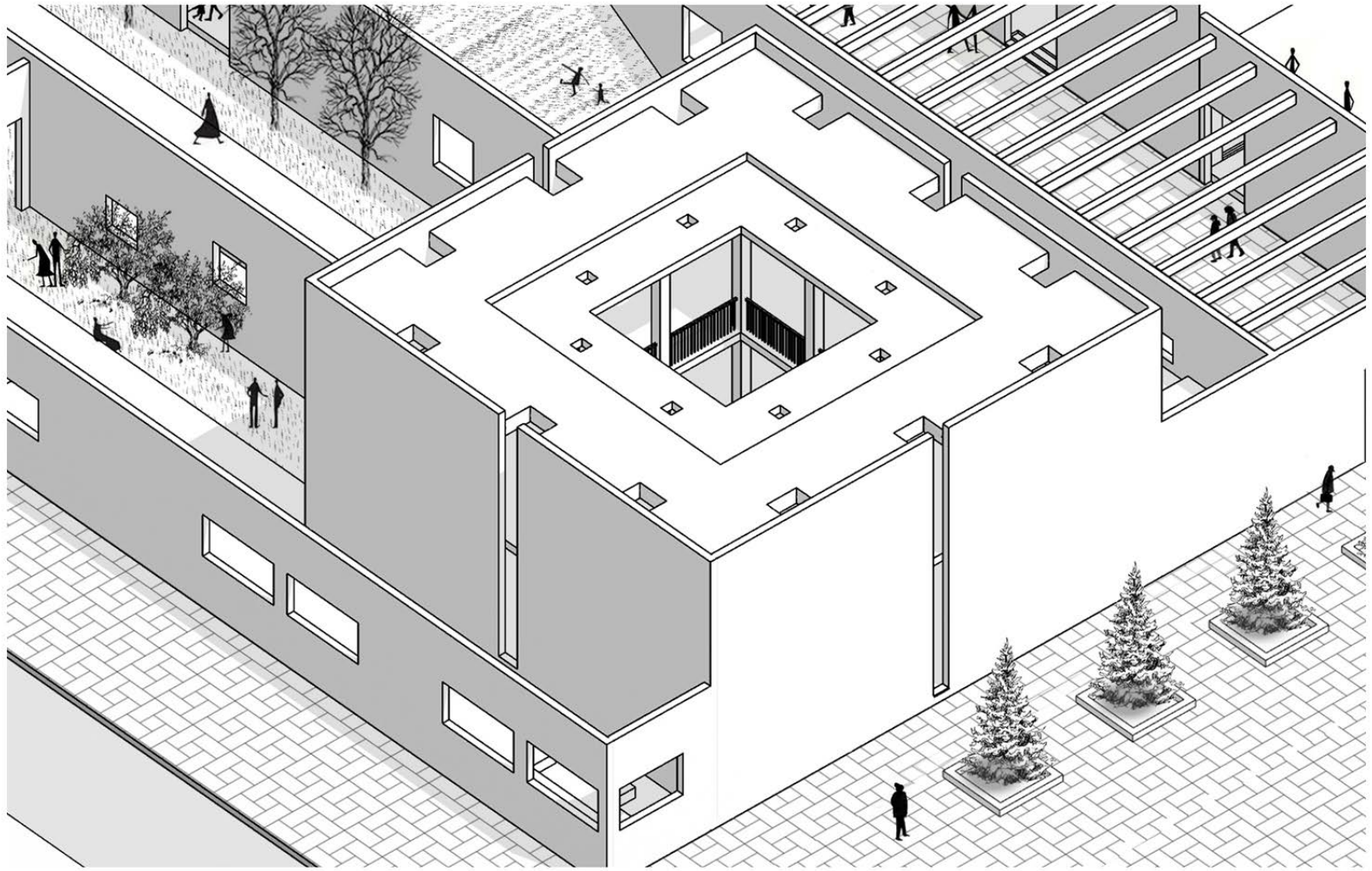


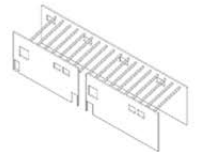
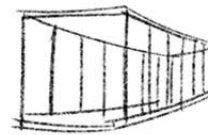
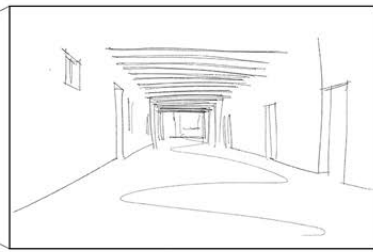
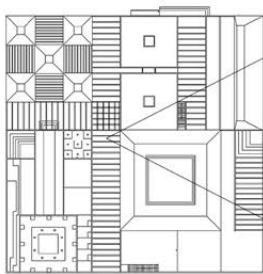
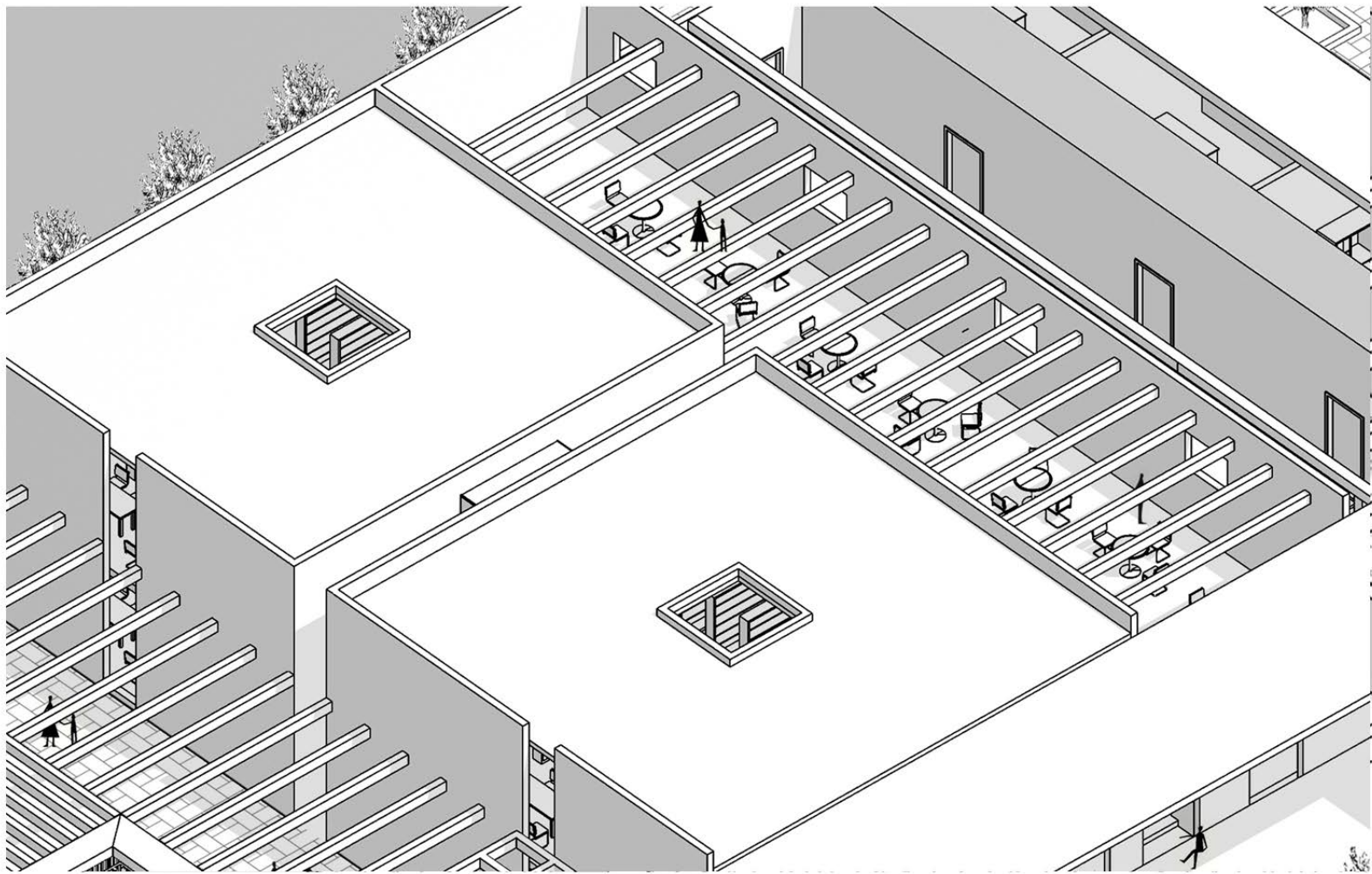


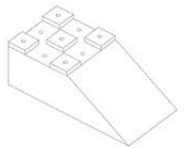
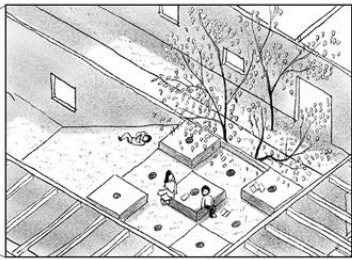
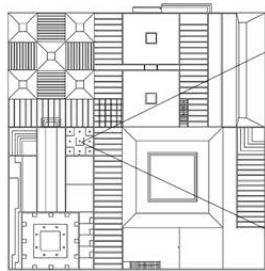
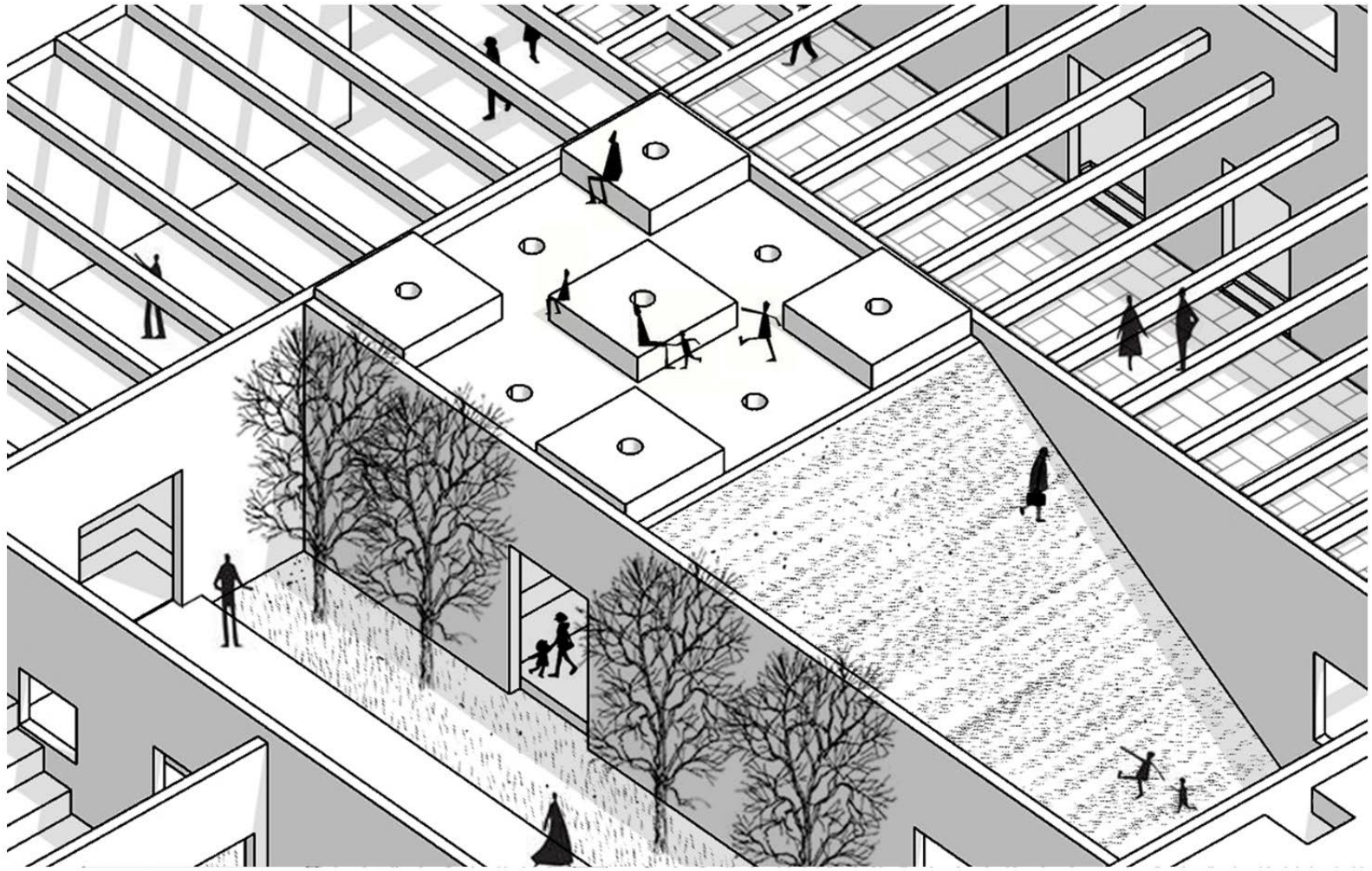
Main entrance

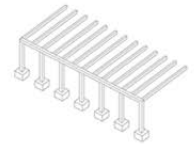
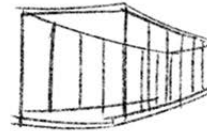
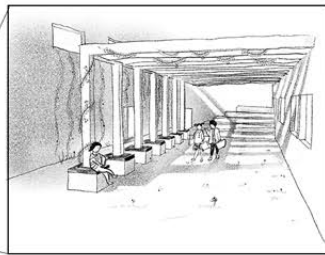
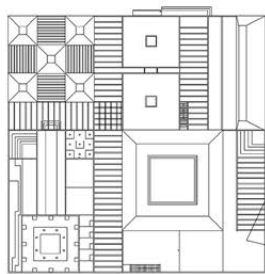
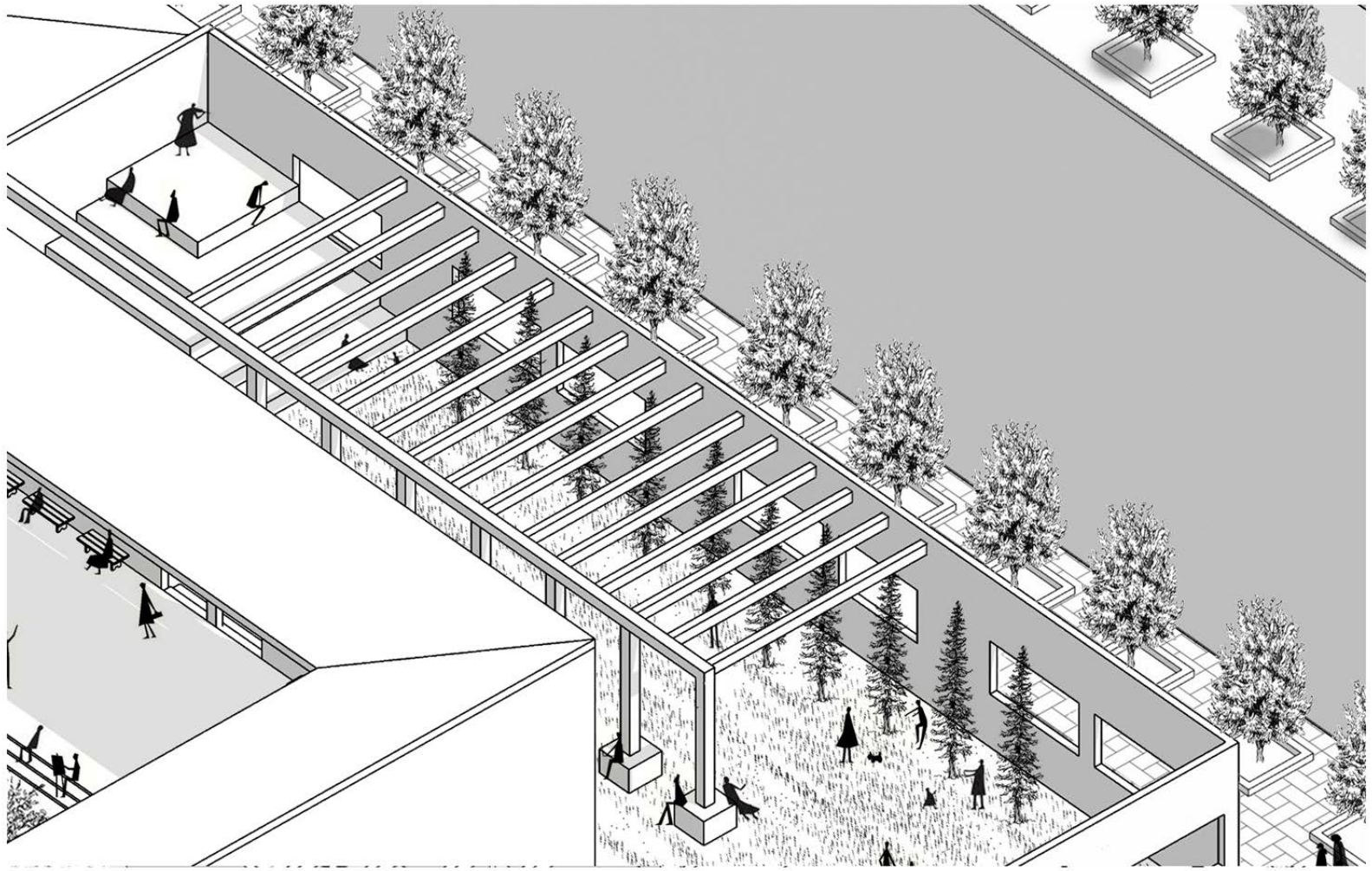


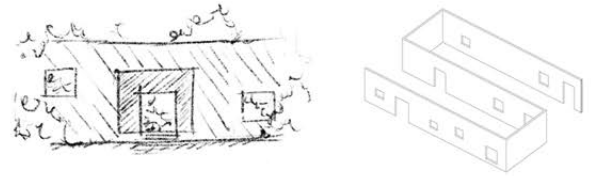
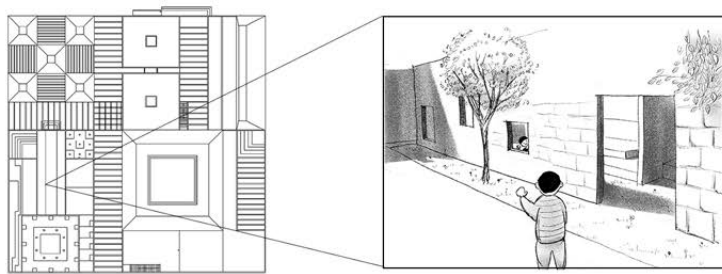
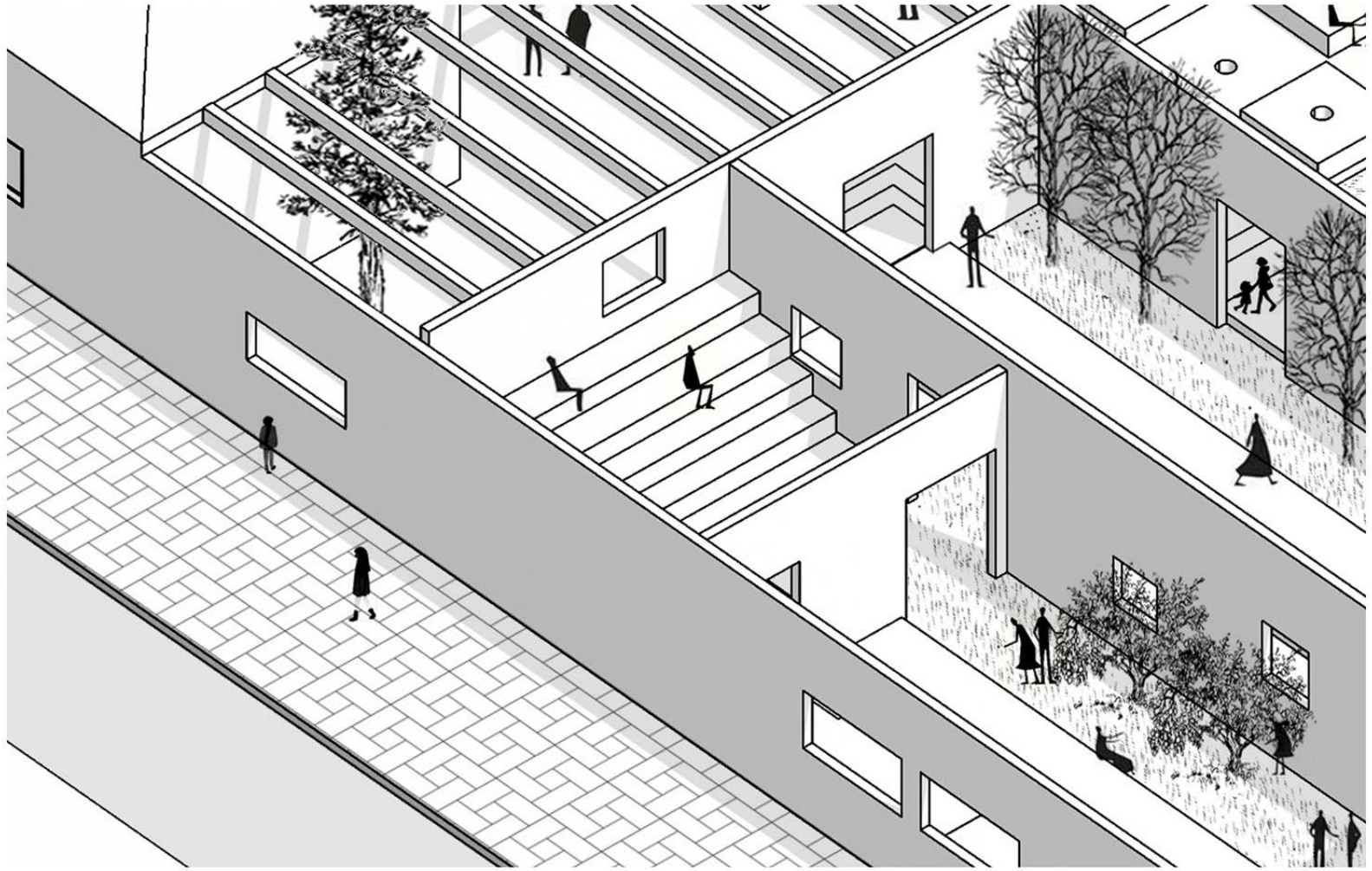


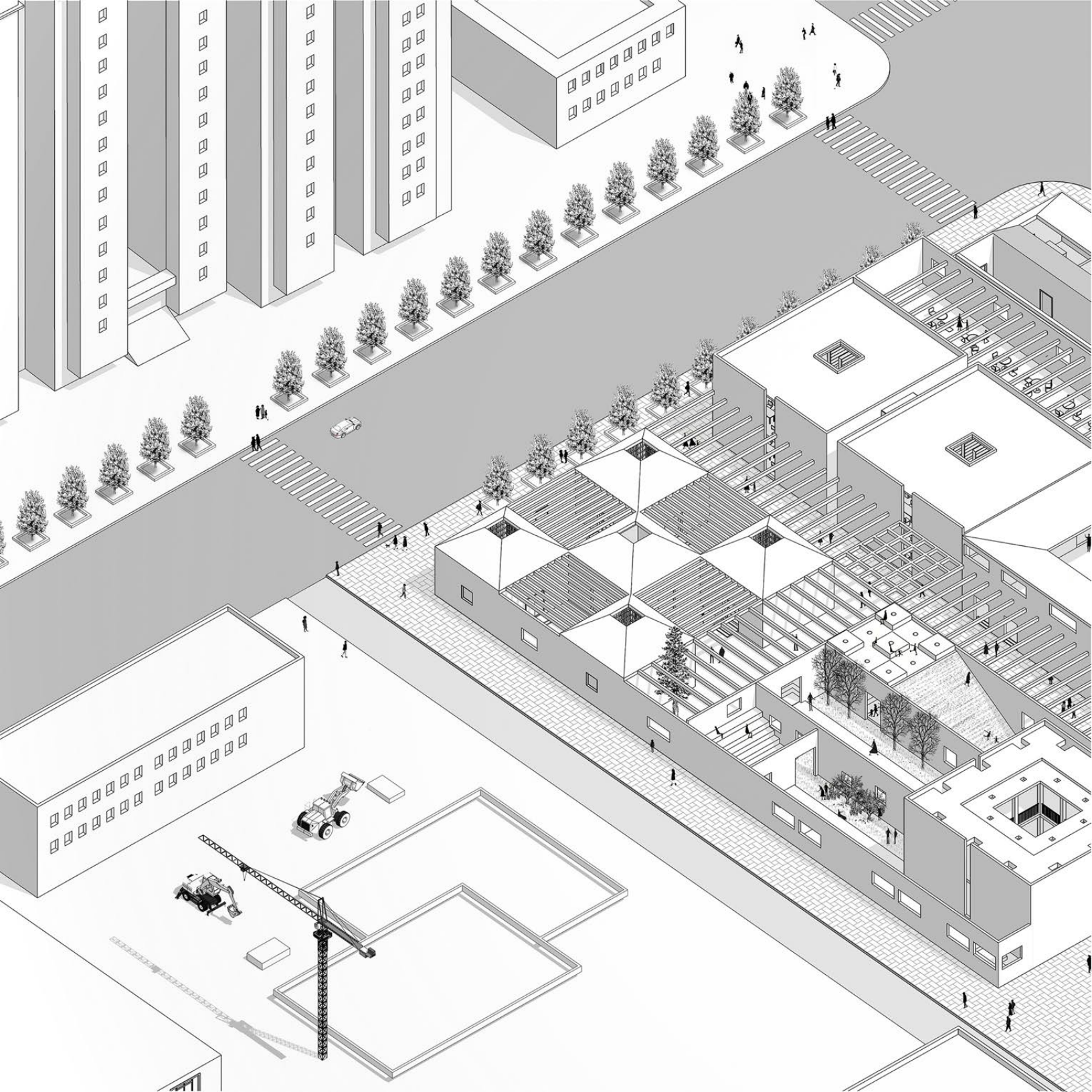


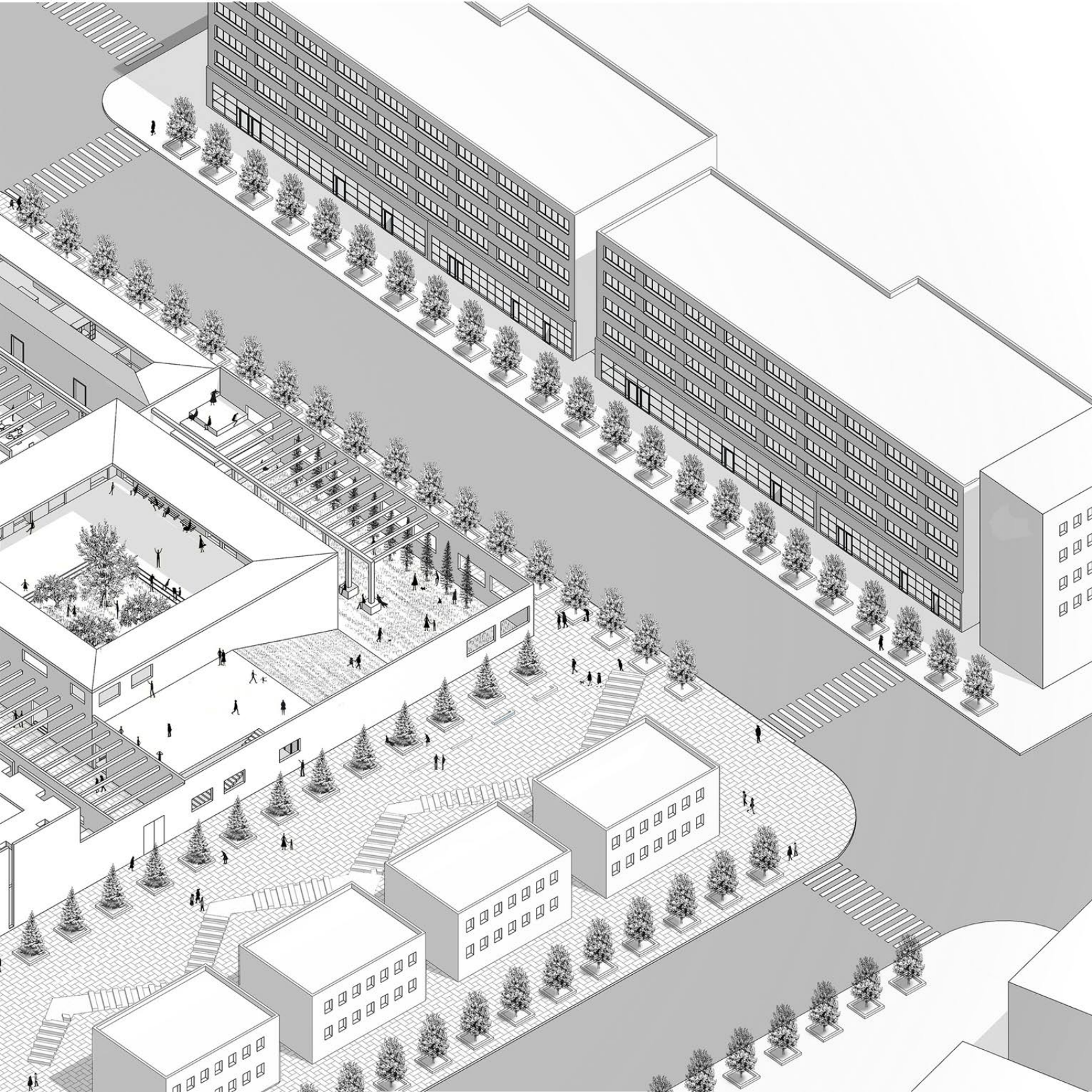


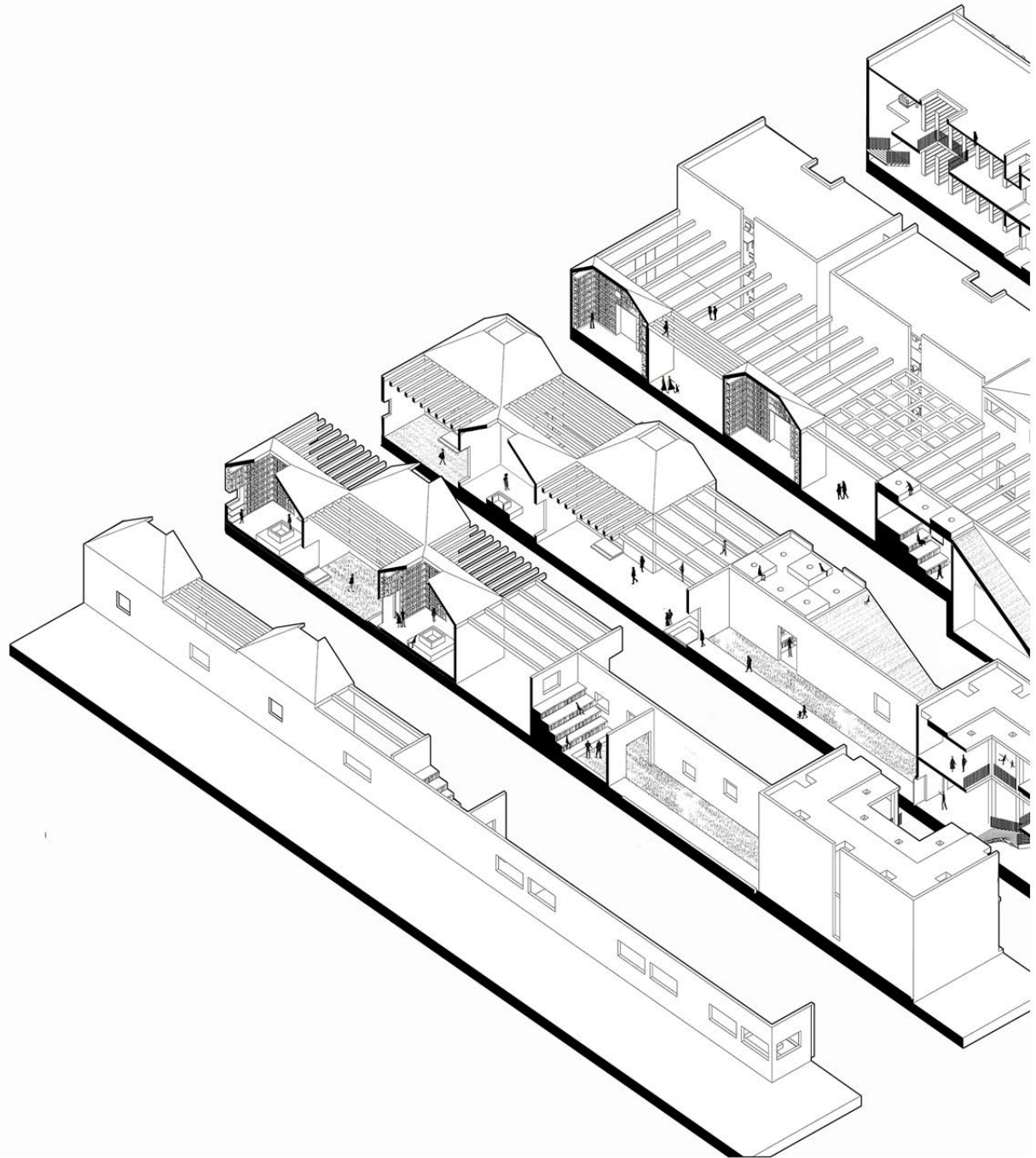


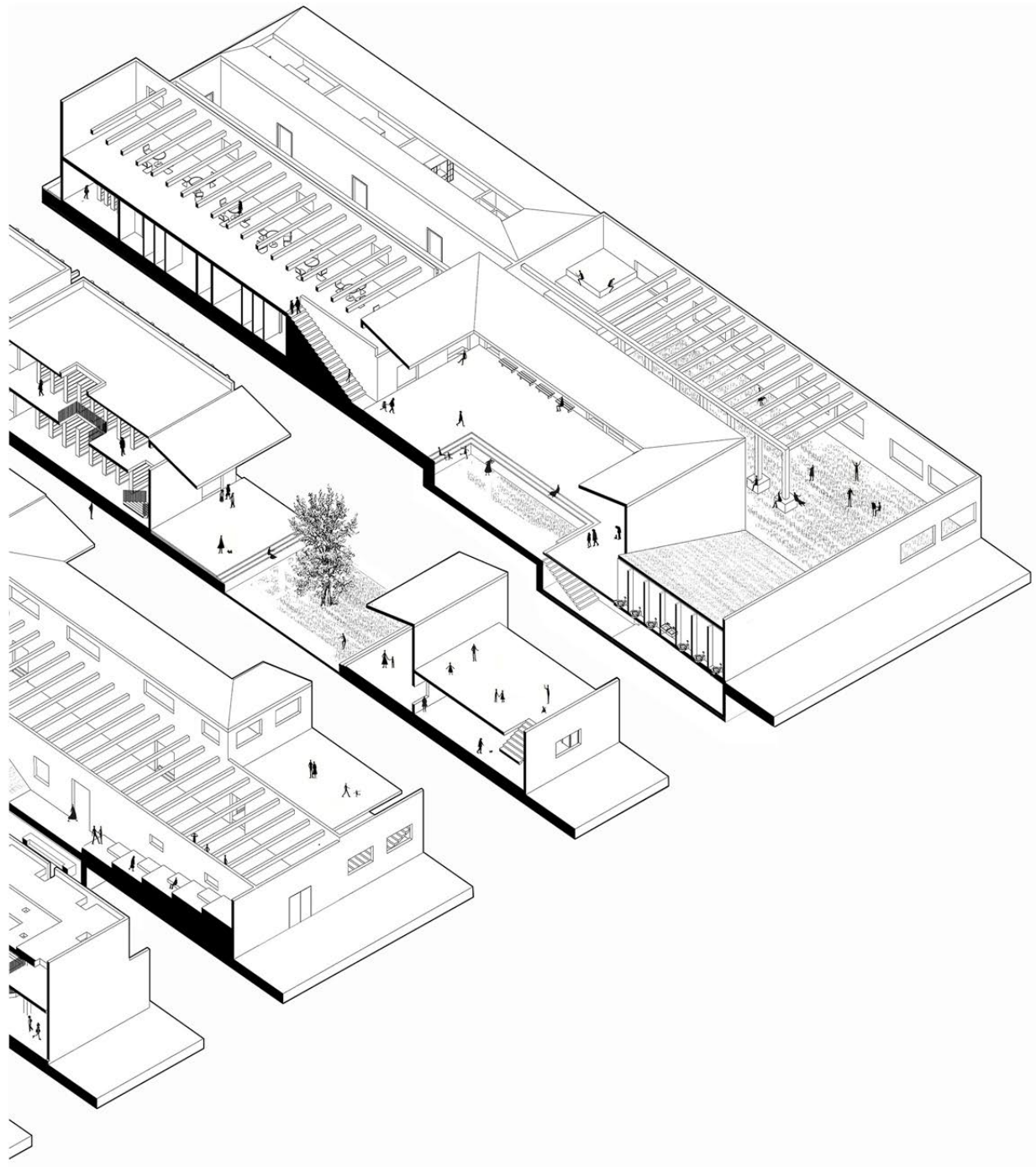


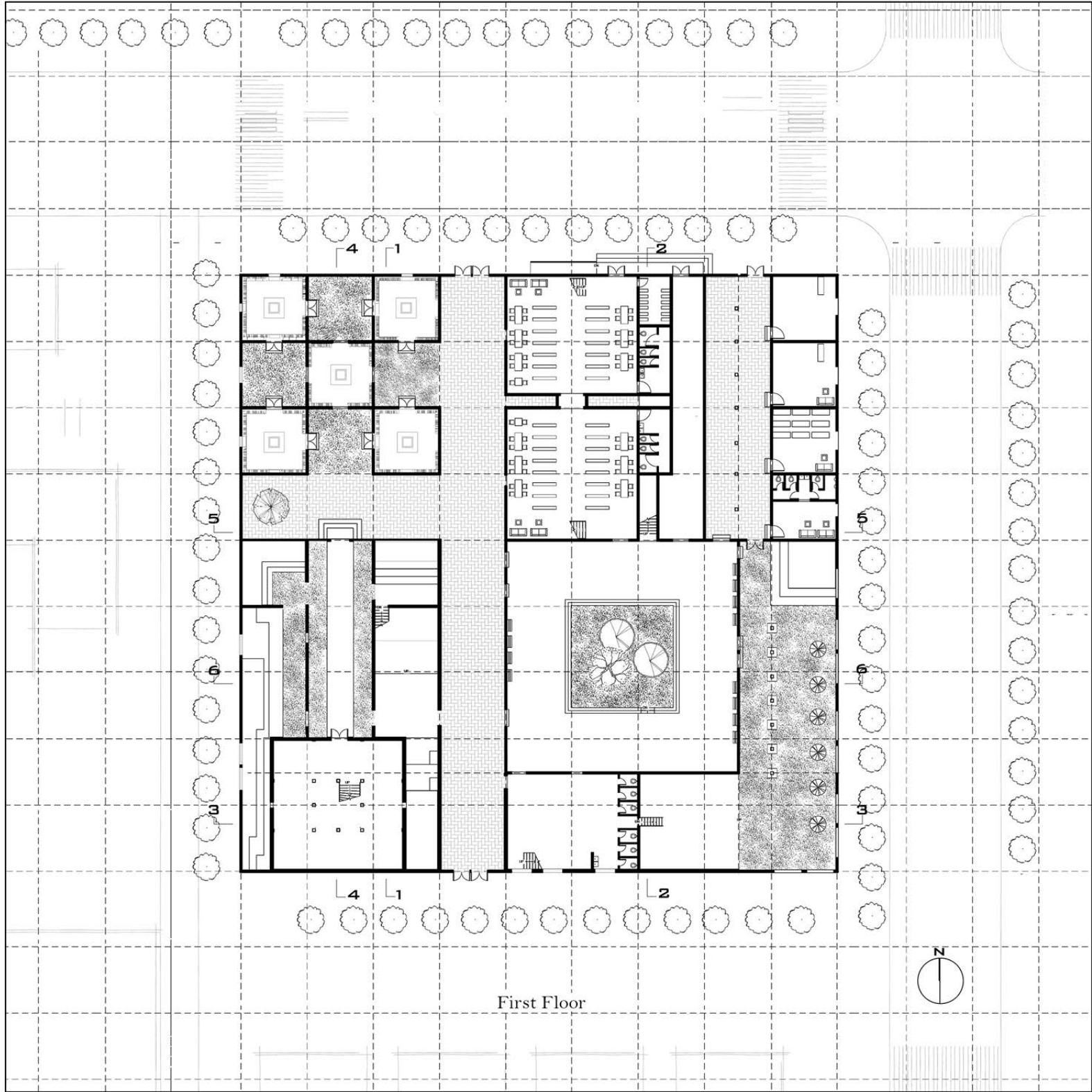






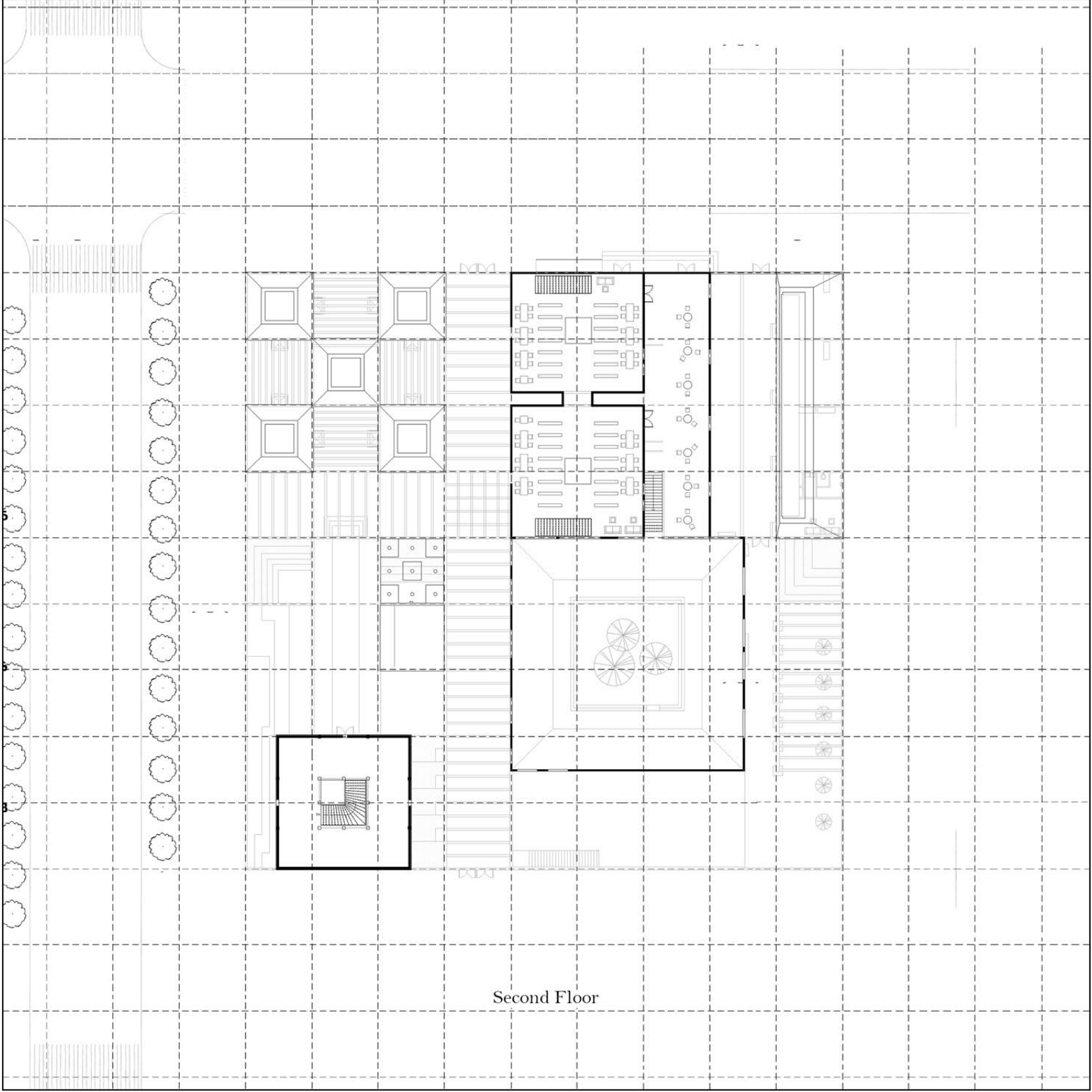




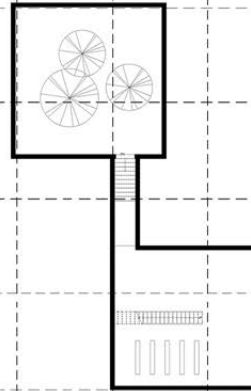
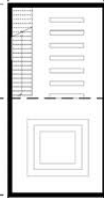


First Floor

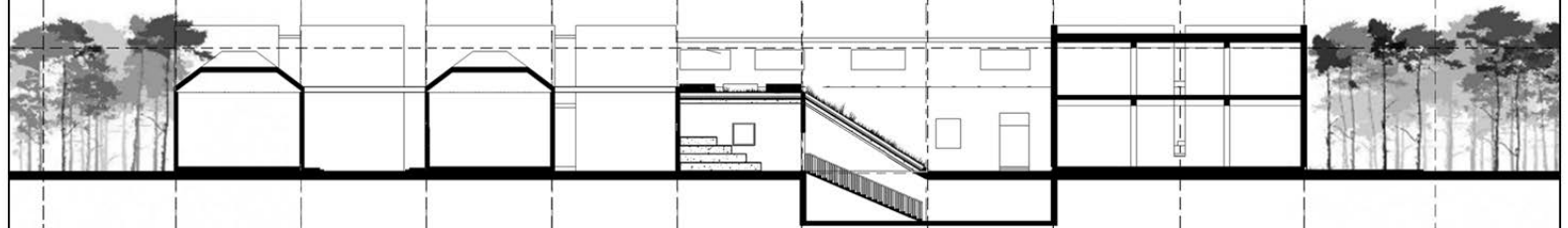
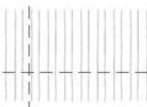
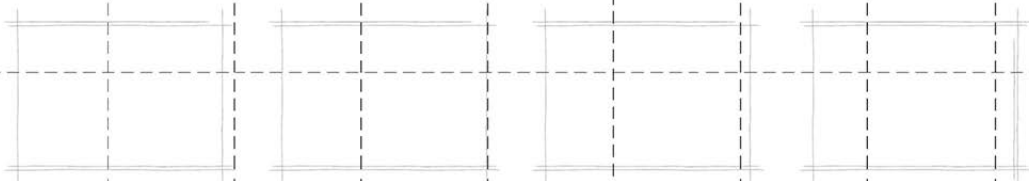




Second Floor



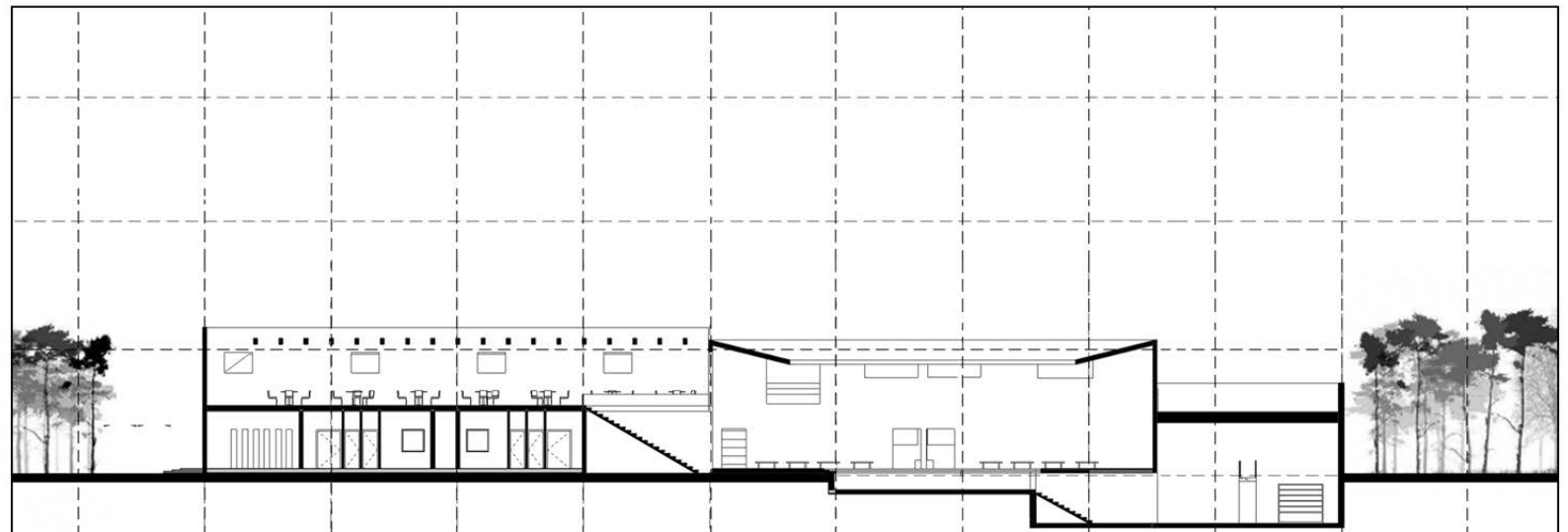
Underground Floor



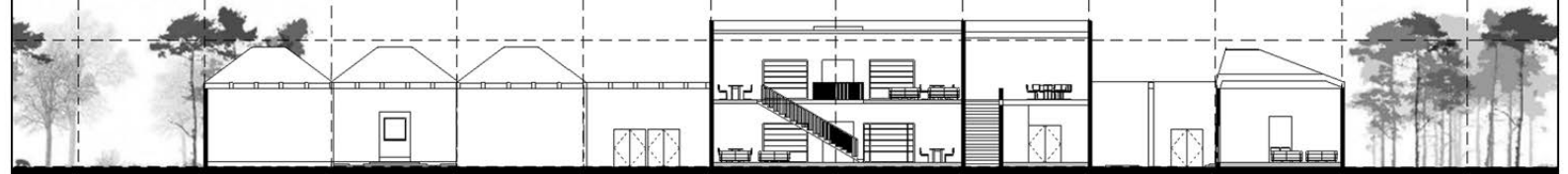
1-1 Section



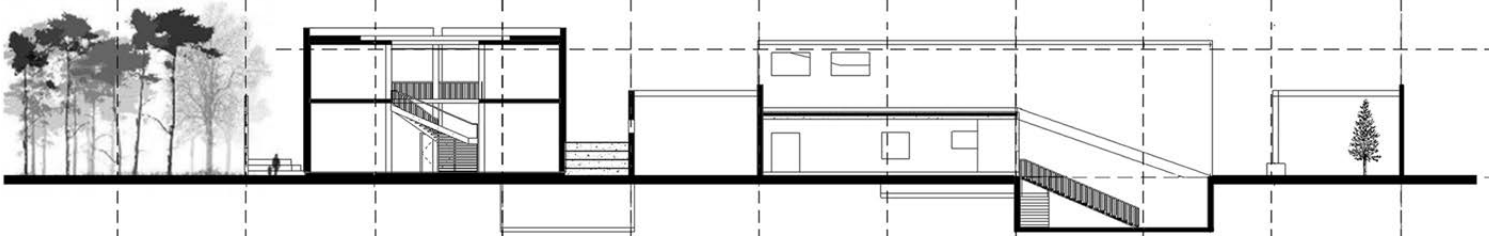
4-4 Section



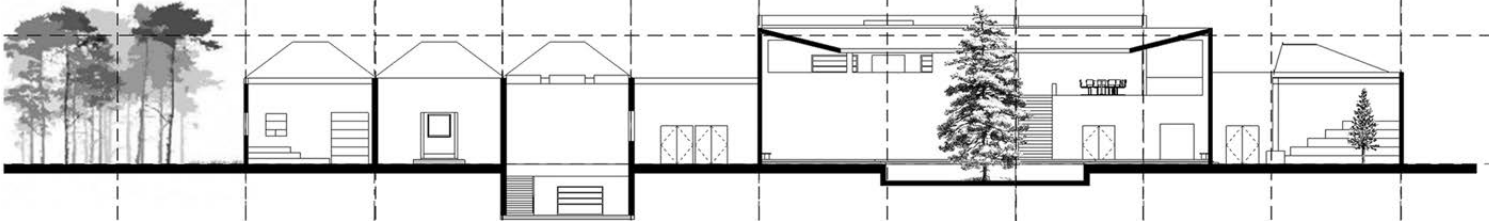
2-2 Section



5-5 Section



3-3 Section



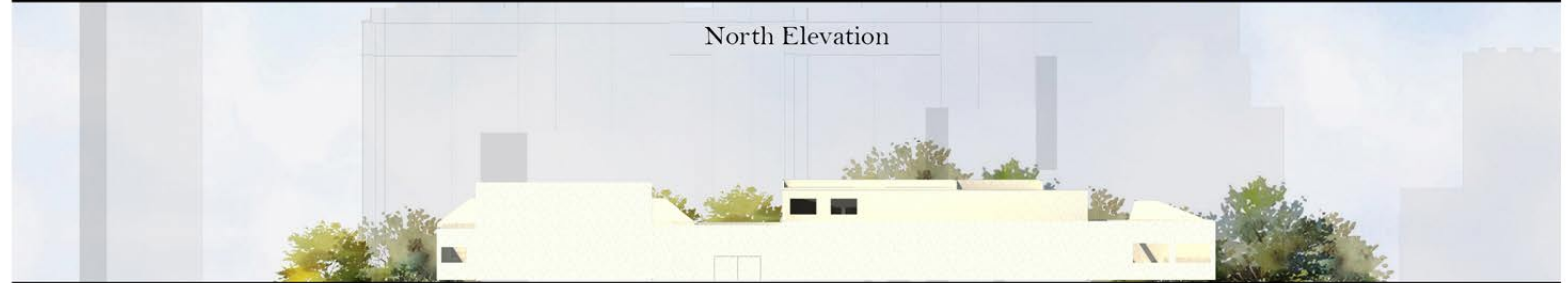
6-6 Section



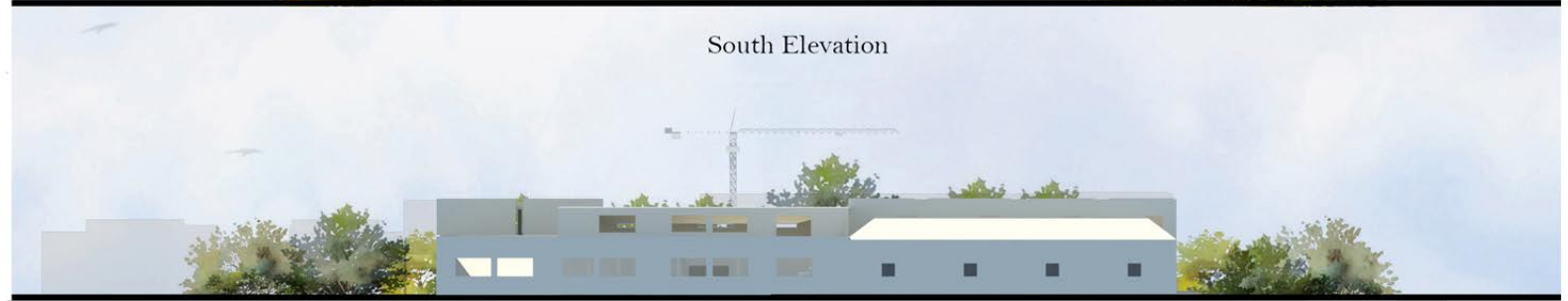
West Elevation



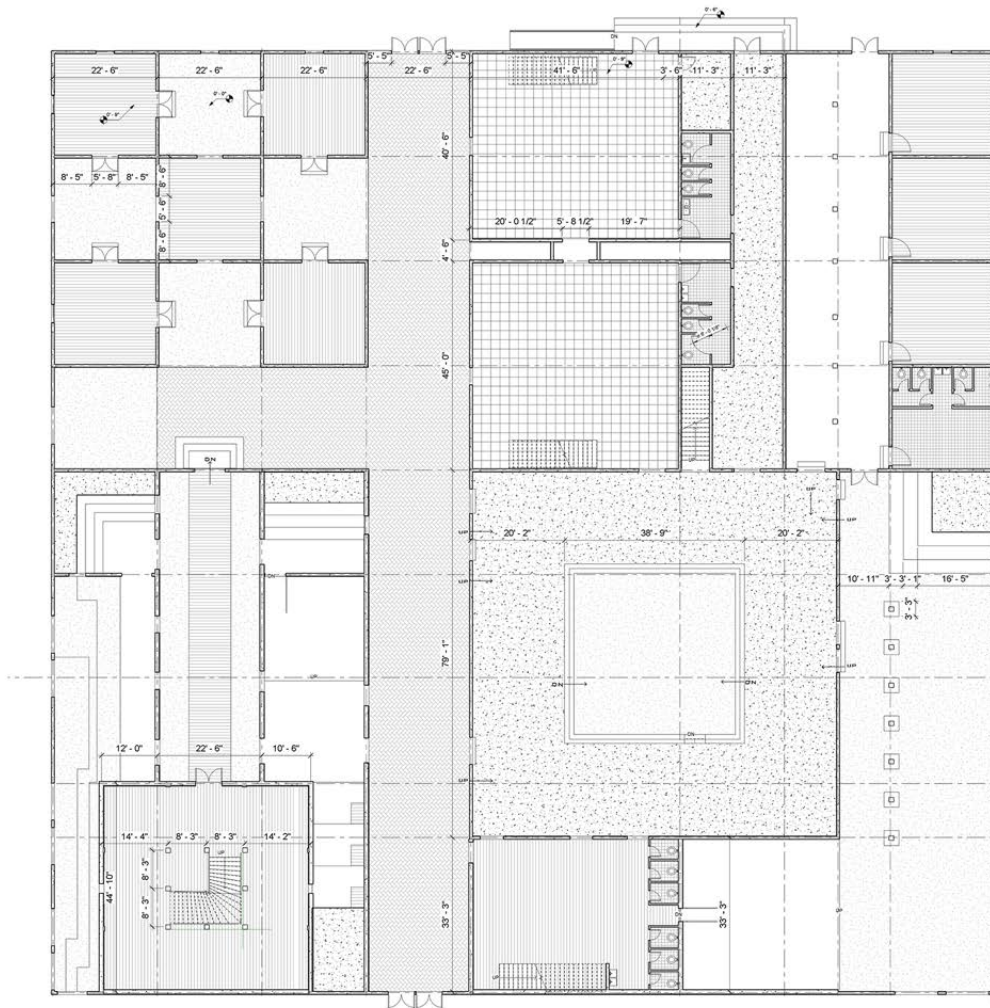
North Elevation



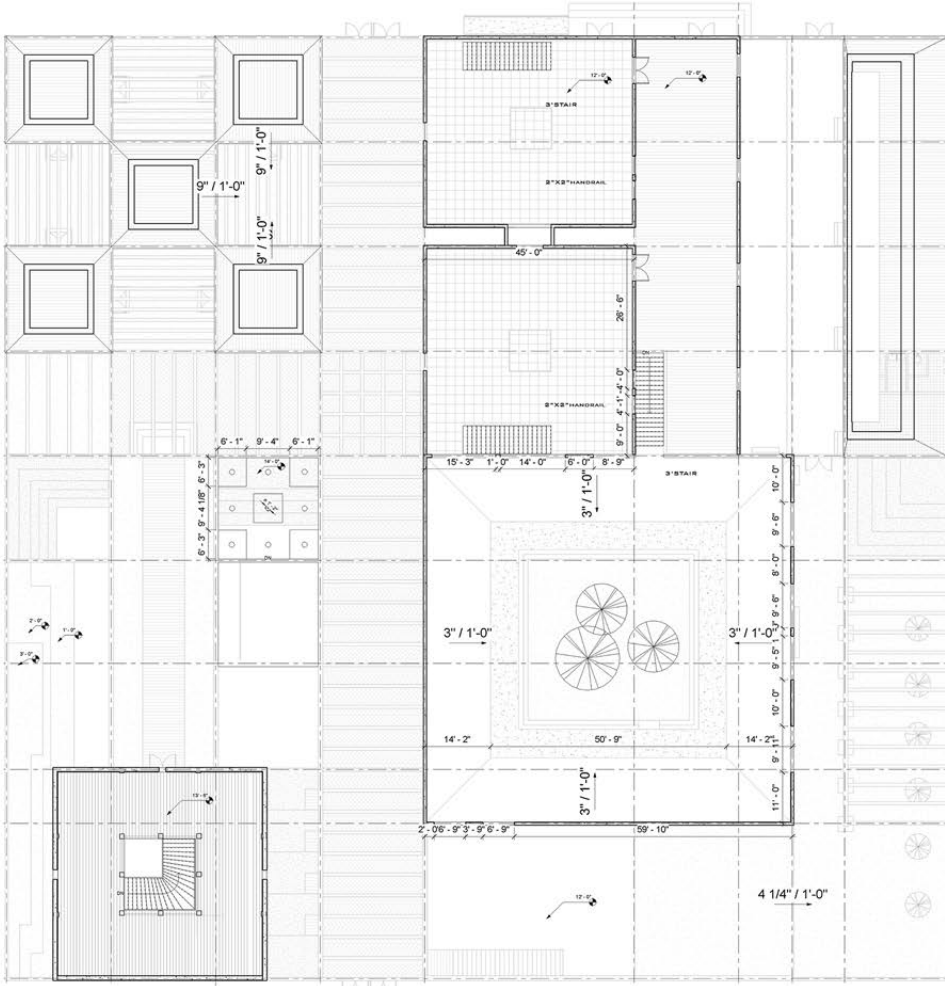
South Elevation



East Elevation

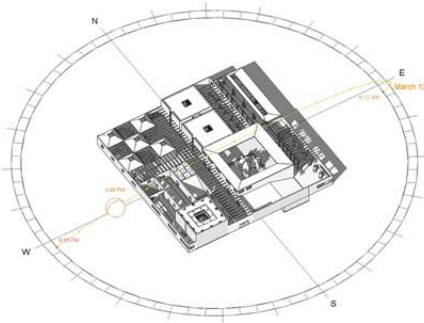


First Floor

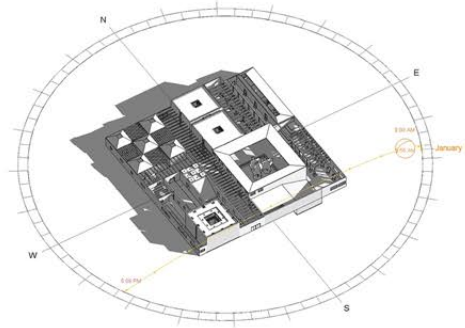


Second Floor

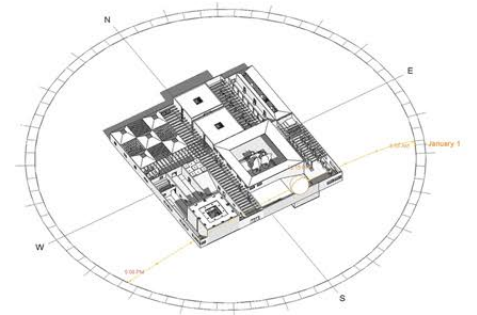
Sun Light Simulation



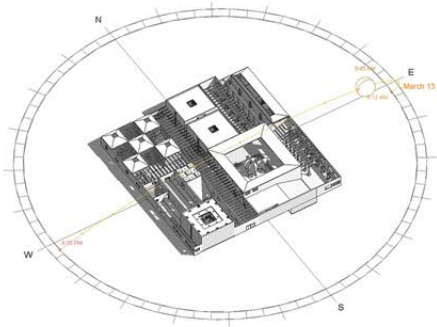
Spring Noon



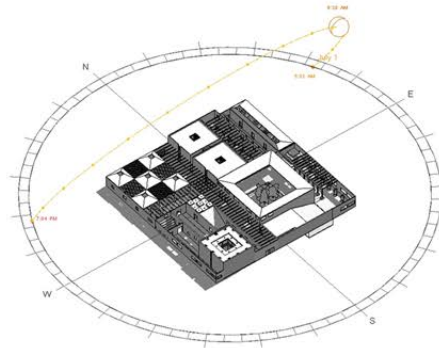
Winter Morning



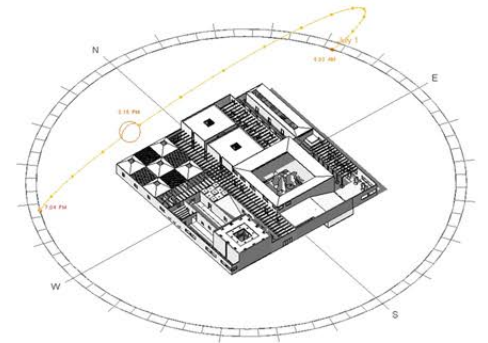
Winter Noon



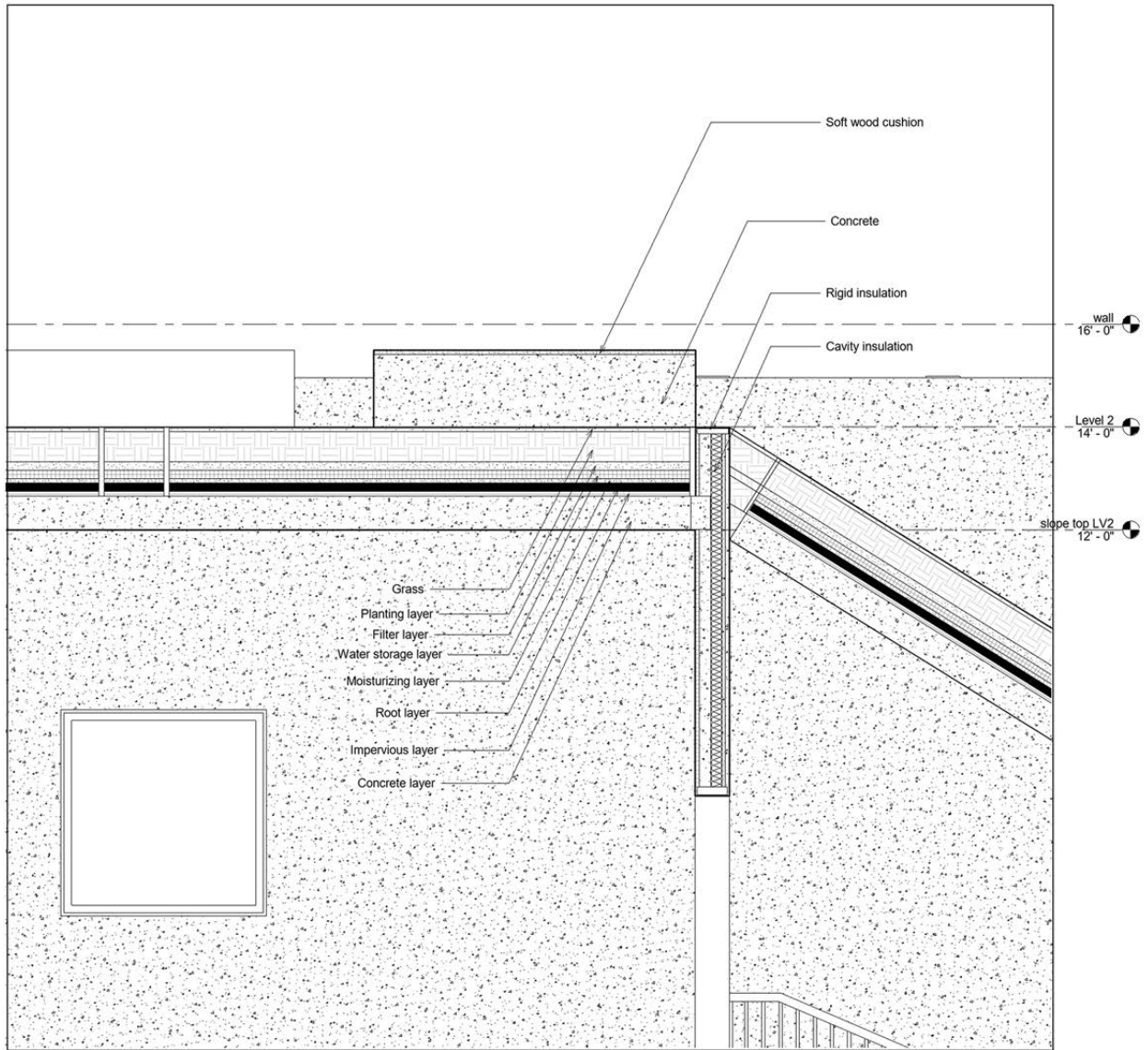
Spring Morning



Summer Morning



Summer Noon



Plant Roof



