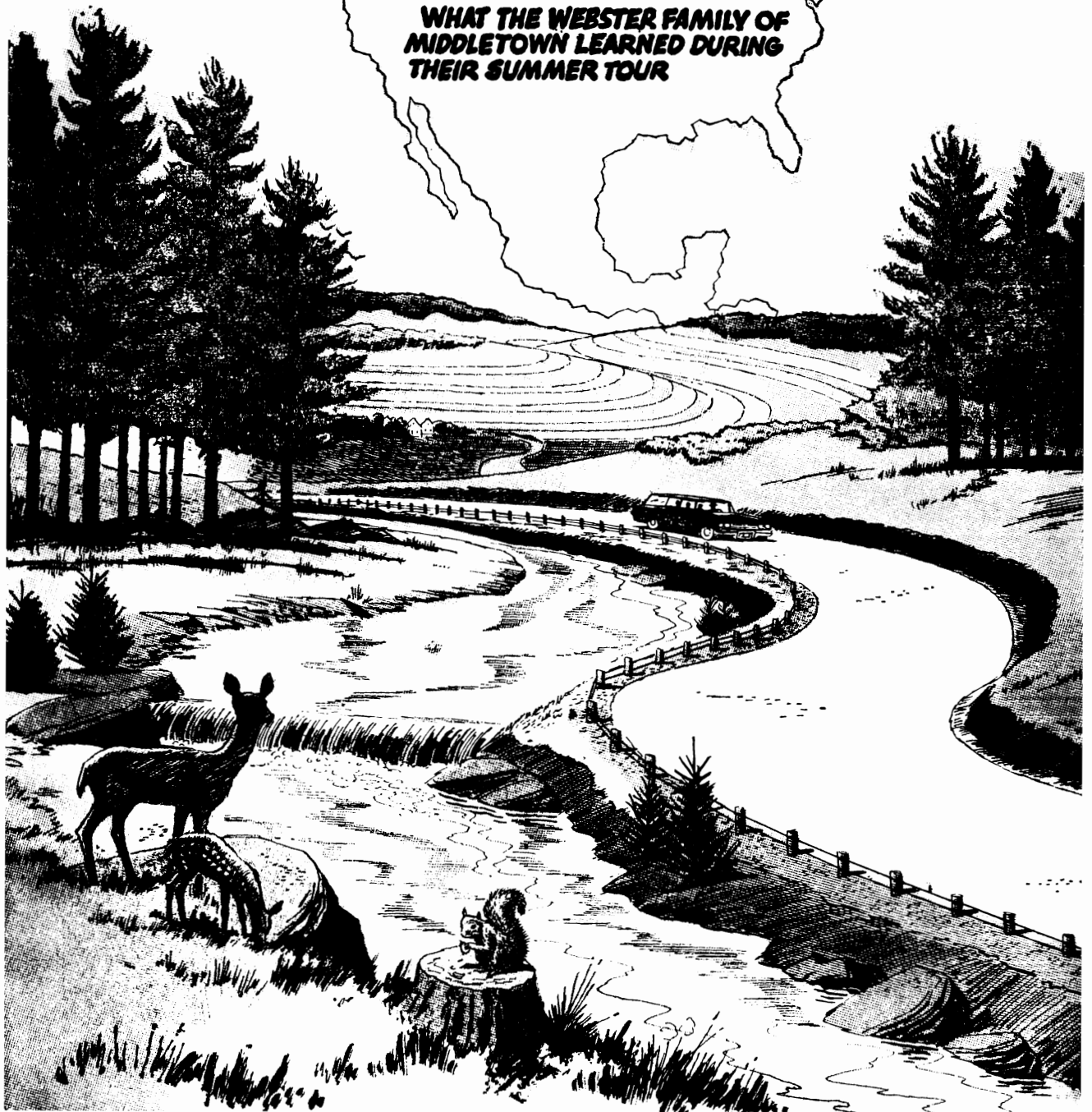
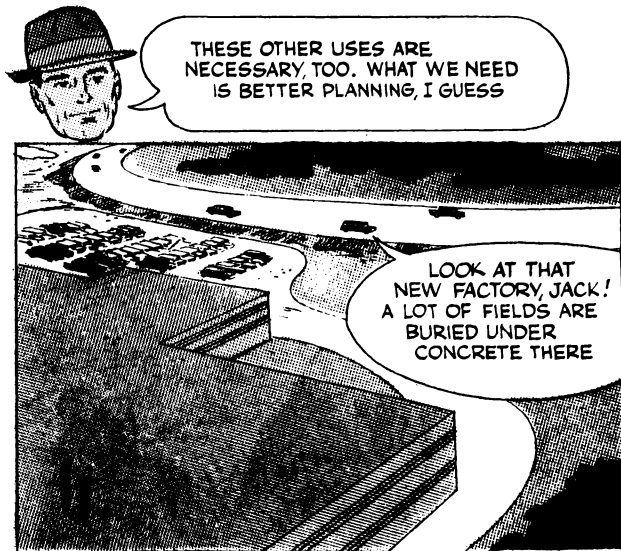
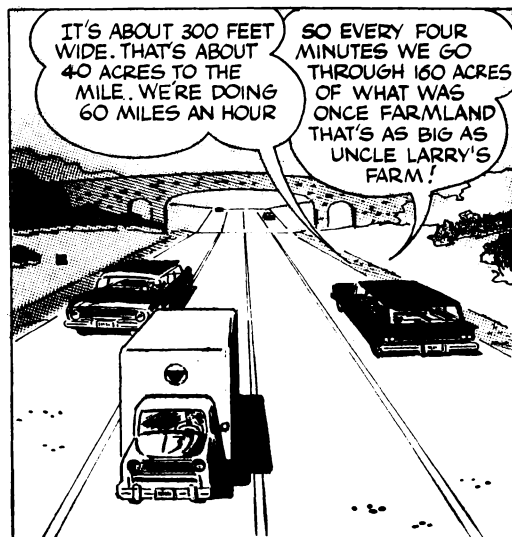
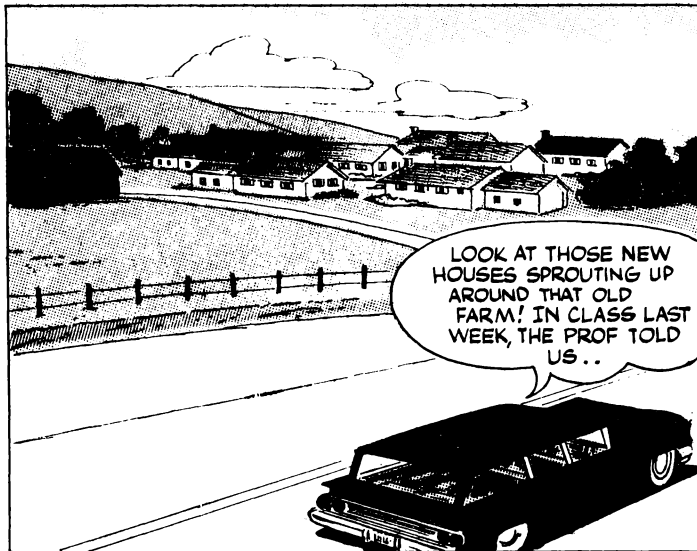


# HELP KEEP OUR LAND BEAUTIFUL

*WHAT THE WEBSTER FAMILY OF  
MIDDLETOWN LEARNED DURING  
THEIR SUMMER TOUR*





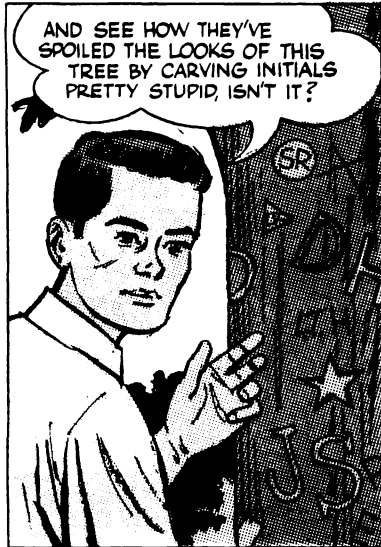


LATER THAT DAY...

NOW WE'RE WAY OUT IN THE COUNTRY AND HERE'S OUR FIRST CAMPSITE!



AND WHAT A NICE CAMPSITE IT WOULD BE IF EVERYONE PUT THEIR WASTE PAPER AND EMPTY CANS IN THE TRASH CONTAINERS



AND SEE HOW THEY'VE SPOILED THE LOOKS OF THIS TREE BY CARVING INITIALS PRETTY STUPID, ISN'T IT?



I TOOK 14 PICTURES TODAY FOR MY SCRAPBOOK, "AMERICA THE BEAUTIFUL" - ONLY SOME WEREN'T BEAUTIFUL! I'M GOING TO START TAKING **CONTRAST PICTURES**

I'M KEEPING A LIST OF UGLY PLACES THAT COULD BE BEAUTIFUL - IF PEOPLE WERE MORE CAREFUL

TIME TO TURN IN! WE'VE GOT A LOT OF AMERICA TO SEE TOMORROW



NEXT MORNING..

DAD! YOU MUST STOP AT THAT BRIDGE SO I CAN TAKE PICTURES OF THAT LOVELY STREAM!

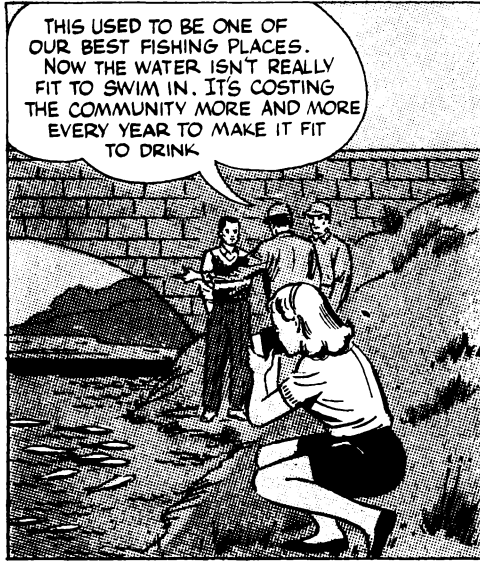
ALL RIGHT, MARY



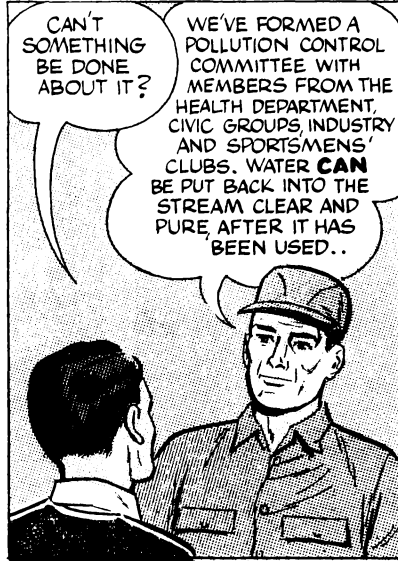
LOOK AT THOSE DEAD FISH!

ARE YOU MEN TESTING THE WATER?

YES THIS STREAM HAS BECOME BADLY POLLUTED, WITH WASTE FROM FACTORIES AND SEWAGE. WE'RE SAMPLING THE WATER NOW

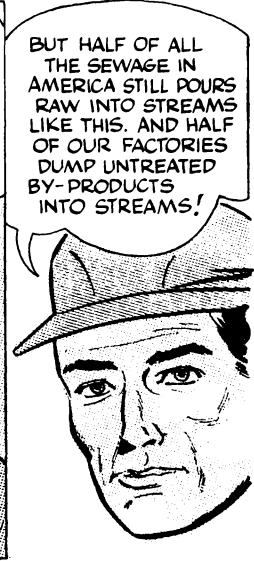


THIS USED TO BE ONE OF OUR BEST FISHING PLACES. NOW THE WATER ISN'T REALLY FIT TO SWIM IN. IT'S COSTING THE COMMUNITY MORE AND MORE EVERY YEAR TO MAKE IT FIT TO DRINK.



CAN'T SOMETHING BE DONE ABOUT IT?

WE'VE FORMED A POLLUTION CONTROL COMMITTEE WITH MEMBERS FROM THE HEALTH DEPARTMENT, CIVIC GROUPS, INDUSTRY AND SPORTSMENS' CLUBS. WATER CAN BE PUT BACK INTO THE STREAM CLEAR AND PURE, AFTER IT HAS BEEN USED..



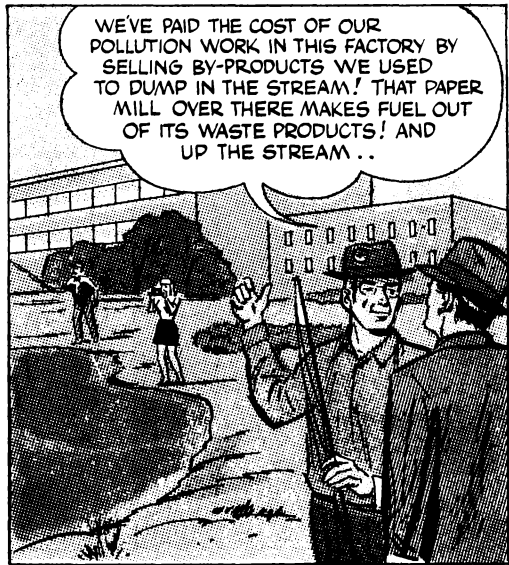
BUT HALF OF ALL THE SEWAGE IN AMERICA STILL POURS RAW INTO STREAMS LIKE THIS. AND HALF OF OUR FACTORIES DUMP UNTREATED BY-PRODUCTS INTO STREAMS!



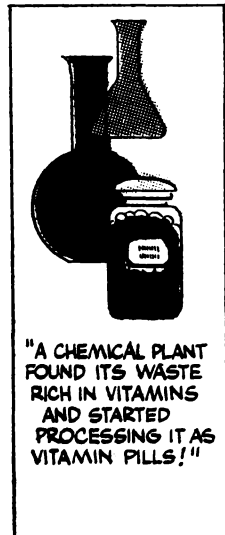
IT WAS TERRIBLE, THE WAY THAT STREAM WAS POLLUTED

BUT HERE'S ONE WHERE PEOPLE ARE FISHING... AND YET THERE'S A FACTORY THERE, TOO! I WANT A PICTURE OF THAT!

IT'S WORTH STOPPING TO ASK ABOUT!



WE'VE PAID THE COST OF OUR POLLUTION WORK IN THIS FACTORY BY SELLING BY-PRODUCTS WE USED TO DUMP IN THE STREAM! THAT PAPER MILL OVER THERE MAKES FUEL OUT OF ITS WASTE PRODUCTS! AND UP THE STREAM..



"A CHEMICAL PLANT FOUND ITS WASTE RICH IN VITAMINS AND STARTED PROCESSING IT AS VITAMIN PILLS!"



OF COURSE IT ISN'T ALWAYS THAT SIMPLE, BUT WHEN PEOPLE SEE HOW IMPORTANT IT IS TO ALL OF THEM, THEY CAN FIND A WAY TO DO IT!

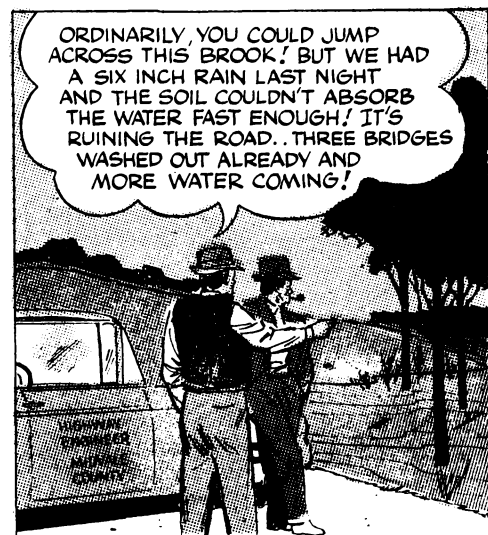
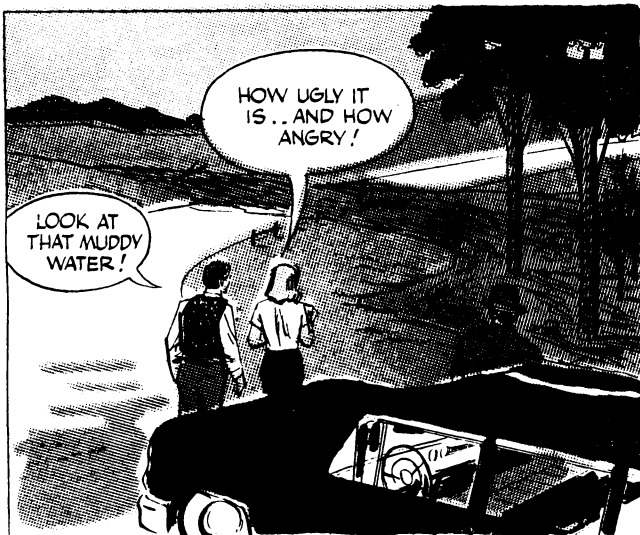
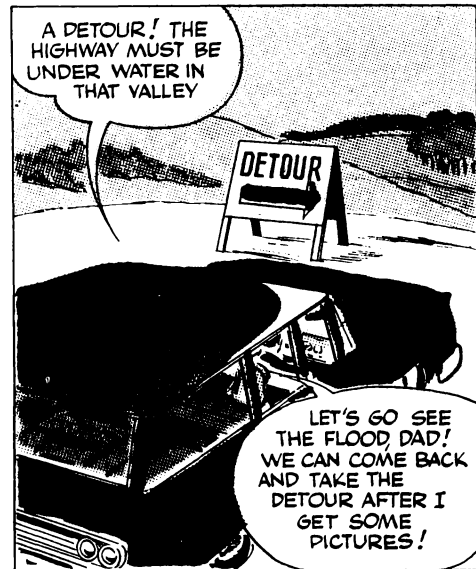
IT PROVES WE DON'T HAVE TO TURN OUR STREAMS INTO FISH-KILLING EYESORES



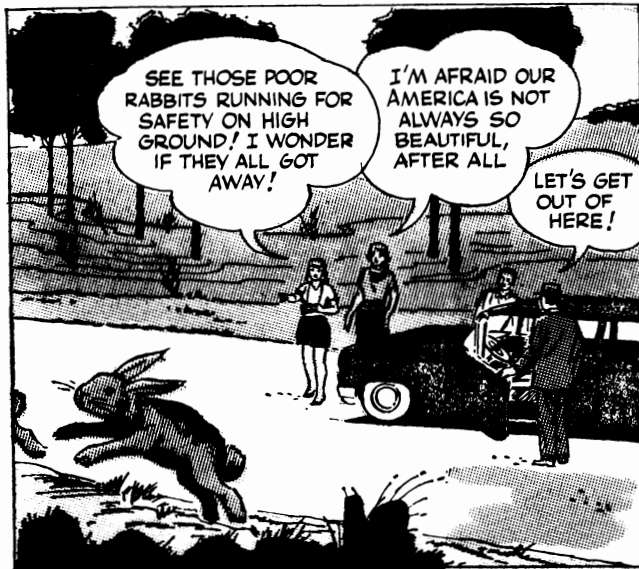
LOOK AT THOSE CLOUDS! I'LL BET WE'RE GOING TO HAVE A REAL STORM!

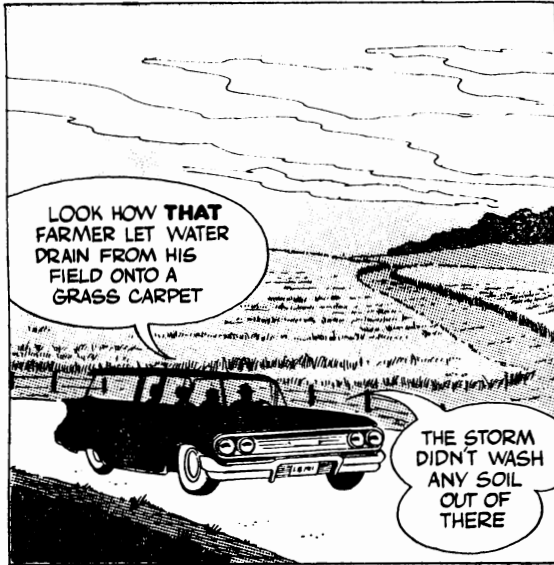
YES WE'D BETTER STOP AND MAKE CAMP FOR THE NIGHT BEFORE IT HITS US!

ALL THAT NIGHT AND ON UNTIL THE NEXT NOON.. AND MORE RAIN







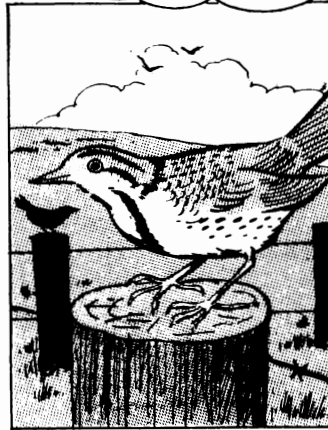


LOOK HOW **THAT** FARMER LET WATER DRAIN FROM HIS FIELD ONTO A GRASS CARPET

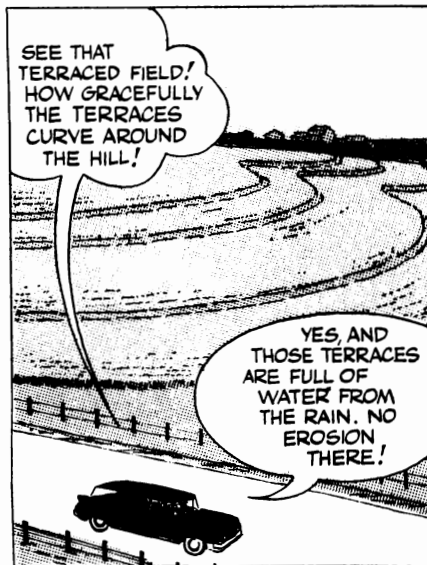
THE STORM DIDN'T WASH ANY SOIL OUT OF THERE



SEE THOSE MEADOWLARKS ON THAT FENCE. THEY MUST HAVE NESTS IN THE GRASS



WHY DON'T ALL FARMERS USE GRASSED WATERWAYS INSTEAD OF GULLIES? THEY NOT ONLY **LOOK NICER**... IT'S EASIER TO FARM ACROSS THEM!



SEE THAT TERRACED FIELD! HOW GRACEFULLY THE TERRACES CURVE AROUND THE HILL!

YES, AND THOSE TERRACES ARE FULL OF WATER FROM THE RAIN. NO EROSION THERE!



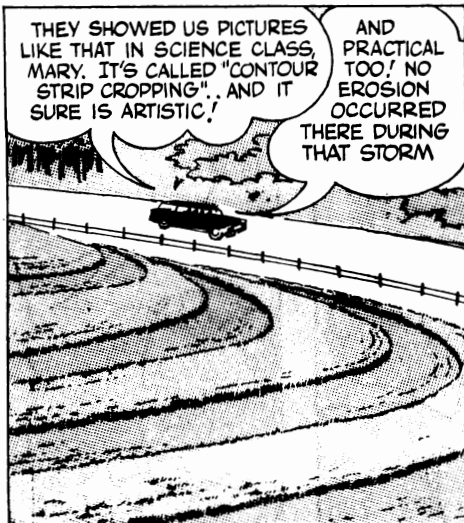
THERE'S A FIELD THAT OUGHT TO BE TERRACED EVEN THE ROOTS OF THE CORN PLANTS ARE WASHED OUT!



THE SOIL AS WELL AS THE CORN HAS BEEN WASHED OUT OF THE LOWER END OF THE FIELD



LOOK, JACK! THERE IS SOME MORE OF THAT FARMING DONE IN CURVING BANDS AROUND THE HILL

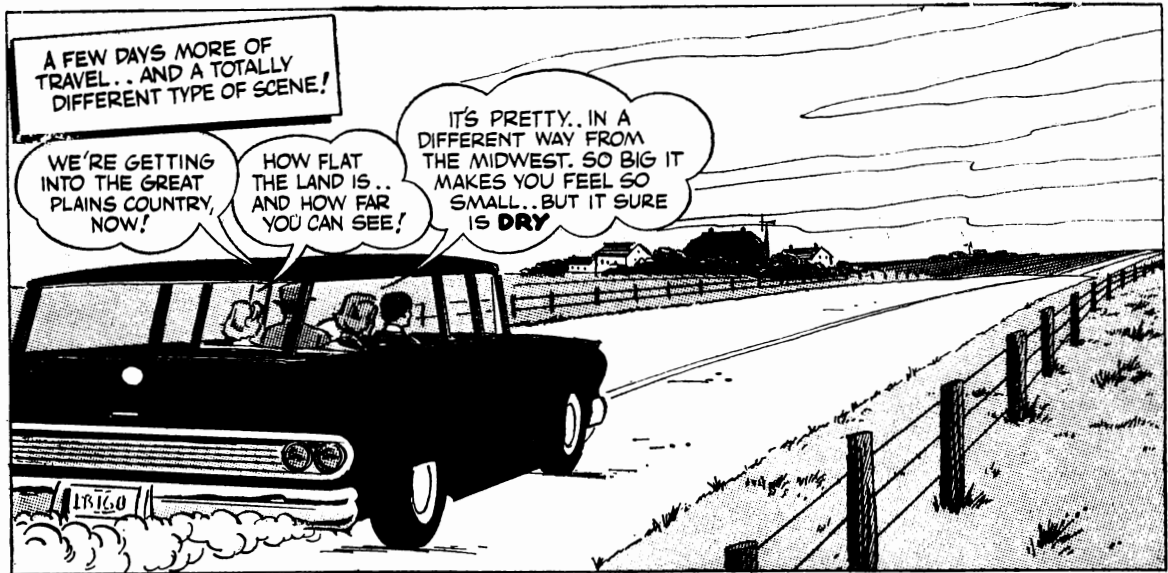


THEY SHOWED US PICTURES LIKE THAT IN SCIENCE CLASS, MARY. IT'S CALLED "CONTOUR STRIP CROPPING". AND IT SURE IS ARTISTIC!

AND PRACTICAL TOO! NO EROSION OCCURRED THERE DURING THAT STORM



WHY EACH ROW IS HOLDING WATER JUST LIKE A LITTLE DAM!

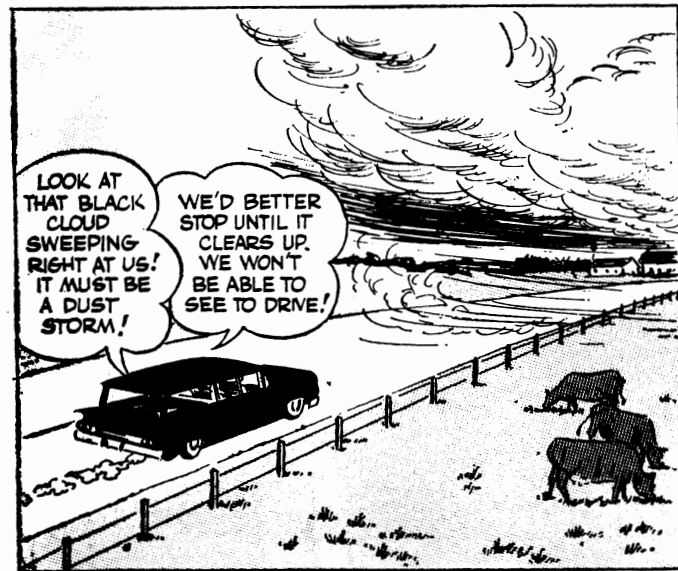


A FEW DAYS MORE OF TRAVEL... AND A TOTALLY DIFFERENT TYPE OF SCENE!

WE'RE GETTING INTO THE GREAT PLAINS COUNTRY, NOW!

HOW FLAT THE LAND IS... AND HOW FAR YOU CAN SEE!

IT'S PRETTY... IN A DIFFERENT WAY FROM THE MIDWEST. SO BIG IT MAKES YOU FEEL SO SMALL... BUT IT SURE IS DRY



LOOK AT THAT BLACK CLOUD SWEEPING RIGHT AT US! IT MUST BE A DUST STORM!

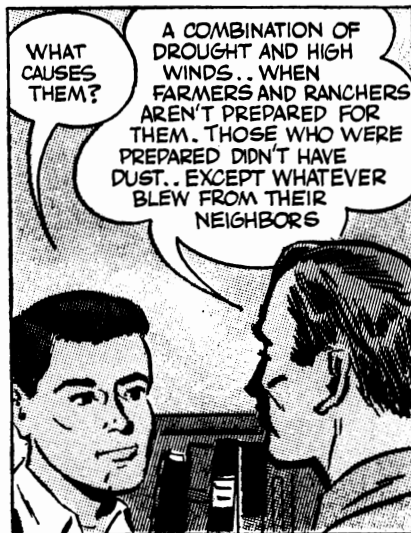
WE'D BETTER STOP UNTIL IT CLEARS UP. WE WON'T BE ABLE TO SEE TO DRIVE!



LET'S STOP AND SEE WHAT THE SOIL CONSERVATION PEOPLE HAVE TO SAY ABOUT WIND EROSION



YOU'VE JUST DRIVEN INTO THE WORST DUST STORM WE'VE HAD ALL YEAR! BUT THEY'RE COMMON IN DROUGHT YEARS LIKE THIS.



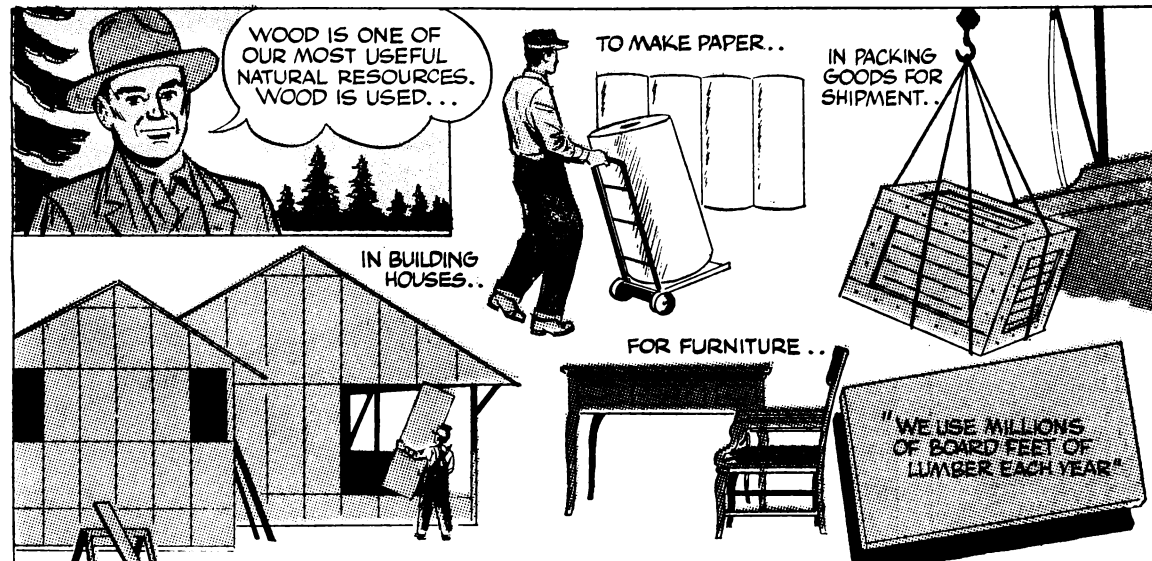
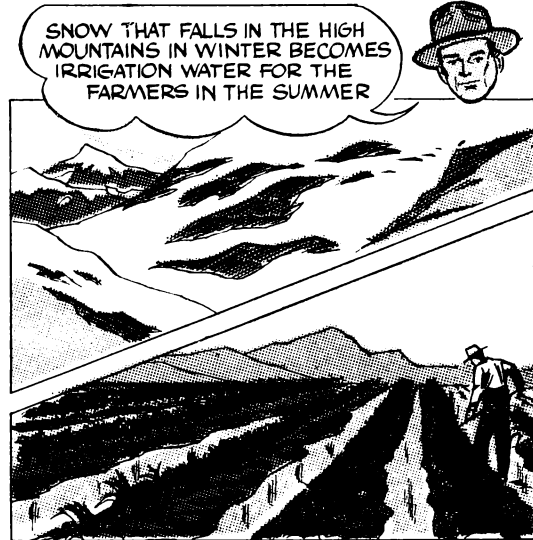
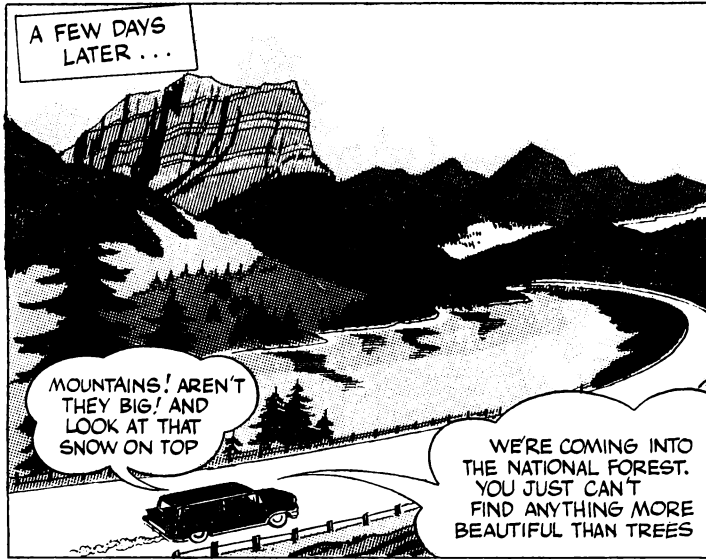
WHAT CAUSES THEM?

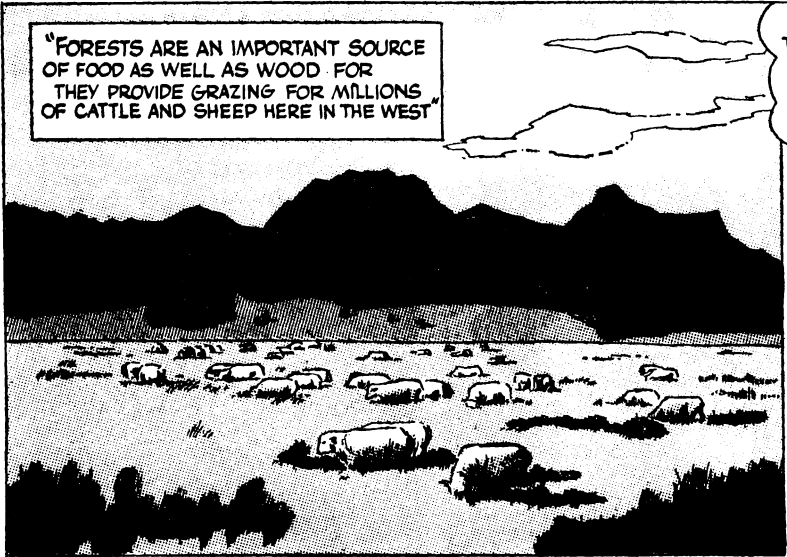
A COMBINATION OF DROUGHT AND HIGH WINDS... WHEN FARMERS AND RANCHERS AREN'T PREPARED FOR THEM. THOSE WHO WERE PREPARED DIDN'T HAVE DUST... EXCEPT WHATEVER BLEW FROM THEIR NEIGHBORS

SOME LAND SHOULD NOT BE PLOWED AT ALL. GOOD FARMERS KEEP SUCH LAND IN GRASS AND GRAZE IT CAREFULLY. THE BETTER LAND CAN BE PLANTED TO WHEAT AND OTHER FOOD CROPS









"FORESTS ARE AN IMPORTANT SOURCE OF FOOD AS WELL AS WOOD FOR THEY PROVIDE GRAZING FOR MILLIONS OF CATTLE AND SHEEP HERE IN THE WEST"



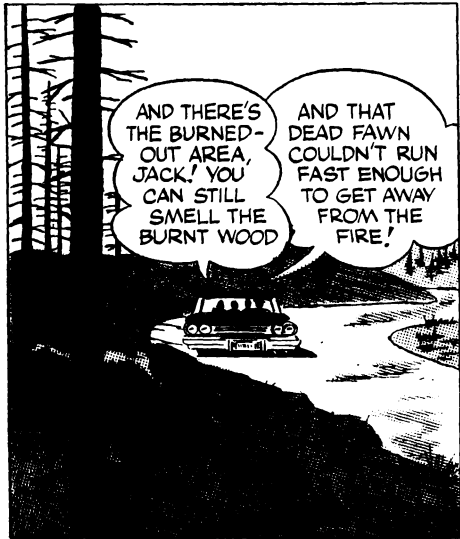
THANKS FOR TELLING JACK AND MARY SO MUCH ABOUT THE CARE OF FORESTS

YOU'RE VERY WELCOME. MOST PUBLIC AND PRIVATELY OWNED FORESTS GET GOOD CARE. BUT YOU'LL PROBABLY SEE SOME THAT DON'T



THERE'S A PIECE OF FOREST LAND LIKE THE RANGER MENTIONED, JACK

THAT'S RIGHT. HE SAID THEY SHOULD ONLY HAVE CUT THE MATURE TREES AND LET THE OTHERS GROW



AND THERE'S THE BURNED-OUT AREA, JACK. YOU CAN STILL SMELL THE BURNT WOOD

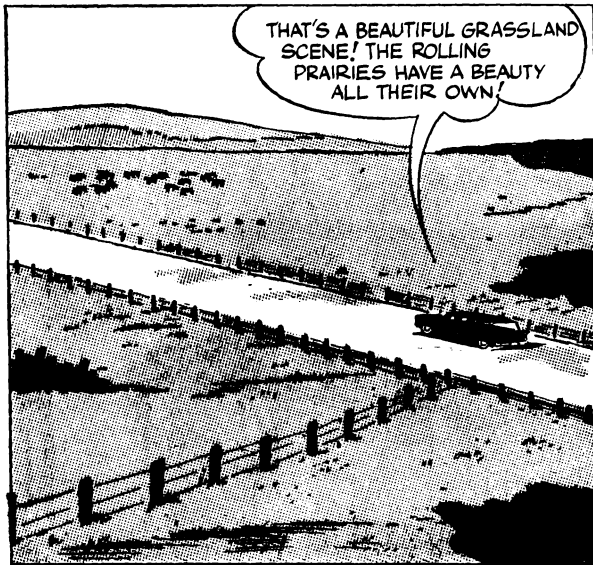
AND THAT DEAD FAWN COULDN'T RUN FAST ENOUGH TO GET AWAY FROM THE FIRE!



THAT WAS NOT A PRETTY SIGHT. I THINK IT'S NICE THAT WE ARE STARTING HOME

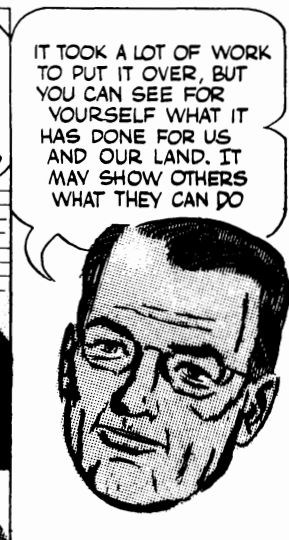


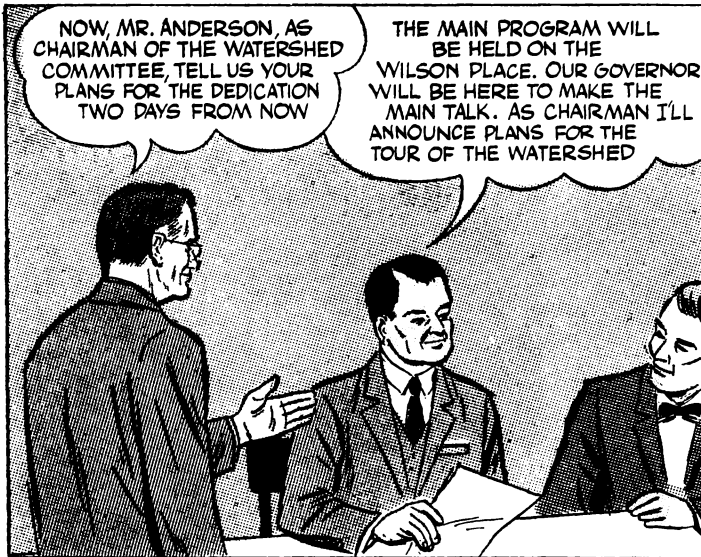
THERE'S SOMETHING YOU'LL LIKE, MOTHER...



THAT'S A BEAUTIFUL GRASSLAND SCENE! THE ROLLING PRAIRIES HAVE A BEAUTY ALL THEIR OWN!

SEVERAL DAYS LATER..





NOW, MR. ANDERSON, AS CHAIRMAN OF THE WATERSHED COMMITTEE, TELL US YOUR PLANS FOR THE DEDICATION TWO DAYS FROM NOW

THE MAIN PROGRAM WILL BE HELD ON THE WILSON PLACE. OUR GOVERNOR WILL BE HERE TO MAKE THE MAIN TALK. AS CHAIRMAN I'LL ANNOUNCE PLANS FOR THE TOUR OF THE WATERSHED



MR. WADE, OUR SOIL CONSERVATION-IST, WILL EXPLAIN THE TECHNICAL PART OF THE WORK. WHERE THE DAMS WERE BUILT, HOW THEY WILL FUNCTION AND HOW THE CONSERVATION WORK ON THE LAND ALL TIES TOGETHER



CARS WILL BE AVAILABLE FOR THE TRIP.. AND WE HAVE PLANNED AN AIR TOUR AS WELL

AN EXCELLENT PROGRAM! YOU MEN HAVE DONE A GOOD JOB!



ON THE DAY OF THE DEDICATION...

IT IS A PLEASURE TO DEDICATE THIS PROJECT TO A FINE COMMUNITY WHERE THE PEOPLE HAVE ALL WORKED TOGETHER TO PROTECT THEIR LAND FROM EROSION AND FROM FLOODS TO MAKE SURE THAT THEIR LAND WILL ALWAYS PRODUCE THE THINGS WE NEED...



AND I MIGHT ADD THAT THEY HAVE MADE IT A BEAUTY SPOT OF OUR STATE

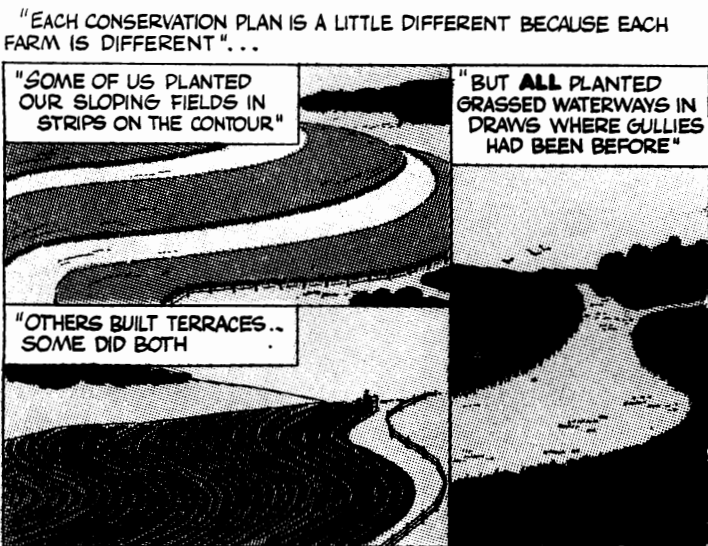
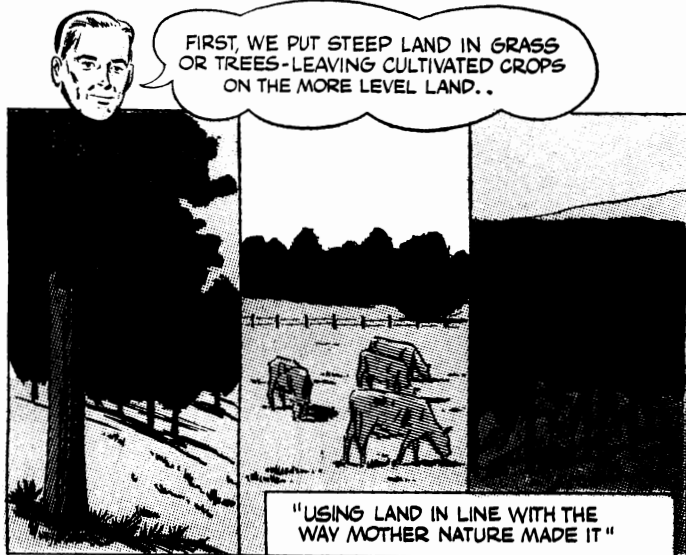
THANK YOU SIR



THE TOUR OF THE WATERSHED WILL START OVER THERE. YOU WILL SEE CONSERVATION WORK ON THE FARM LAND.. AND YOU WILL SEE THE FLOOD RETARDING DAMS THAT HAVE BEEN BUILT TO COMPLETE THE WATERSHED PROTECTION JOB



LET'S GET IN THAT FIRST CAR SO WE WON'T MISS ANYTHING



"THERE ISN'T A GULLY ANYWHERE IN CEDAR VALLEY NOW!"





PONDS LIKE THIS HAVE BEEN BUILT ALL OVER THE COUNTRY... MANY IN AREAS THAT HAD LITTLE WATER BEFORE



IN CONTRAST, THIS MARSH WAS LEFT **JUST AS IT WAS**, BECAUSE ITS GREATEST VALUE WAS FOR WILDLIFE AND WATER CONSERVATION

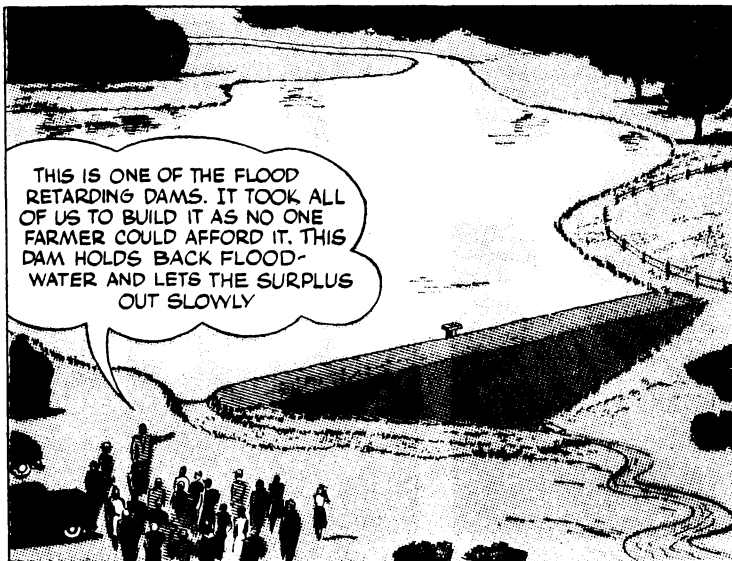


"WE PLANTED TREES AND HEDGES FOR EROSION CONTROL AND TO GIVE FOOD AND PROTECTION TO BIRDS AND SMALL ANIMALS"



"SOME LEVEL FIELDS WERE TOO WET, SO WE GOT RID OF SURPLUS WATER BY PUTTING IN TILES."

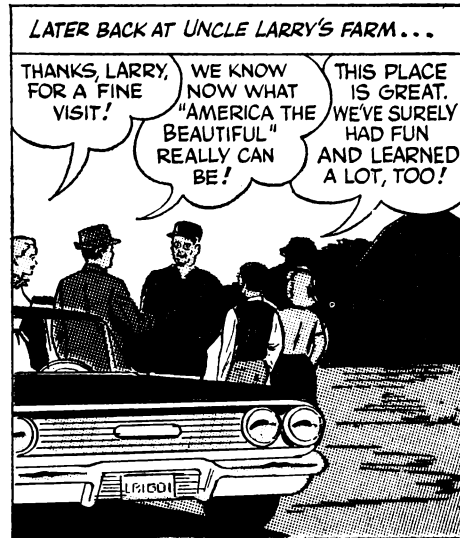
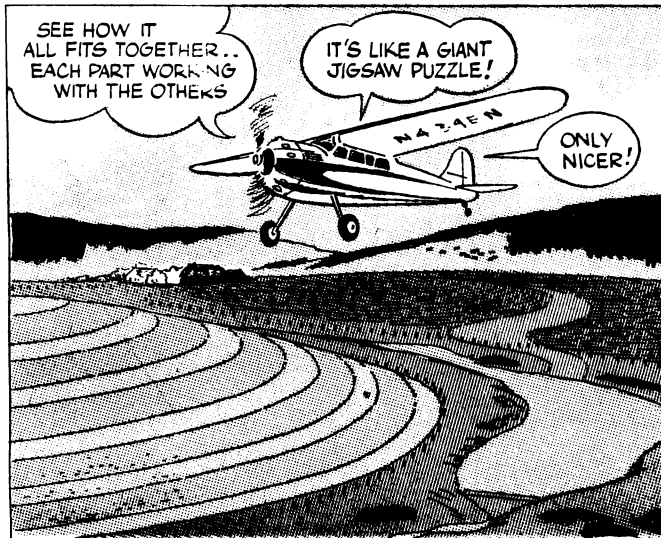
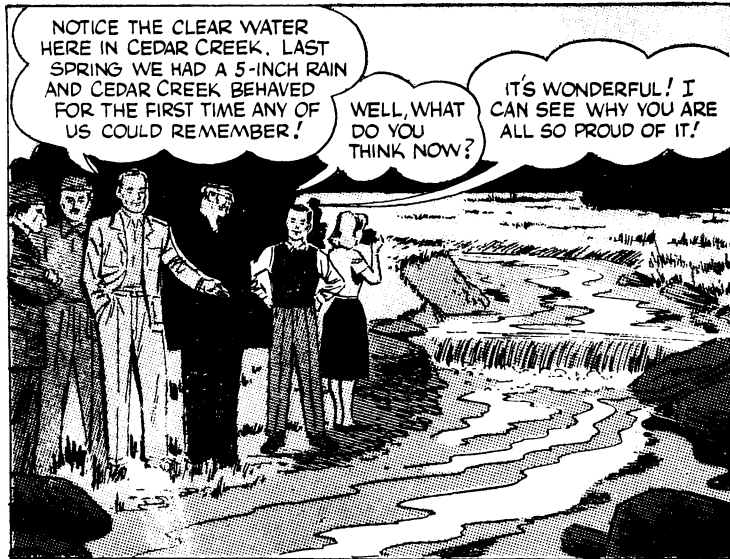
"AND IT GROWS MORE OF EVERYTHING INCLUDING FOOD AND COVER FOR PHEASANTS AND RABBITS"



THIS IS ONE OF THE FLOOD RETARDING DAMS. IT TOOK ALL OF US TO BUILD IT AS NO ONE FARMER COULD AFFORD IT. THIS DAM HOLDS BACK FLOOD-WATER AND LETS THE SURPLUS OUT SLOWLY

"A SMALL POOL IS USUALLY LEFT WHICH PROVIDES RECREATION. AND WE'VE SEEN DEER WATERING HERE"







# YOU MAY JOIN



More Than 65,000  
4-H Boys and Girls  
of Virginia for

**LEARNING--EARNING--ADVENTURE AND FUN**  
**in**  
**NATURAL RESOURCE CONSERVATION**

Reprint courtesy Soil Conservation Society of America for Cooperative Extension Service, Virginia Polytechnic Institute, Blacksburg, Virginia 24061

*Publication 2*  
Circular 988

March 1966

*Issued in furtherance of Cooperative Extension work, acts of May 8 and June 30, 1914, in cooperation with the U. S. Department of Agriculture. W. E. Skelton, Director of Extension Service, Virginia Polytechnic Institute, Blacksburg, Virginia 24061.*