

APPENDIX

SAMPLE DATA PACK

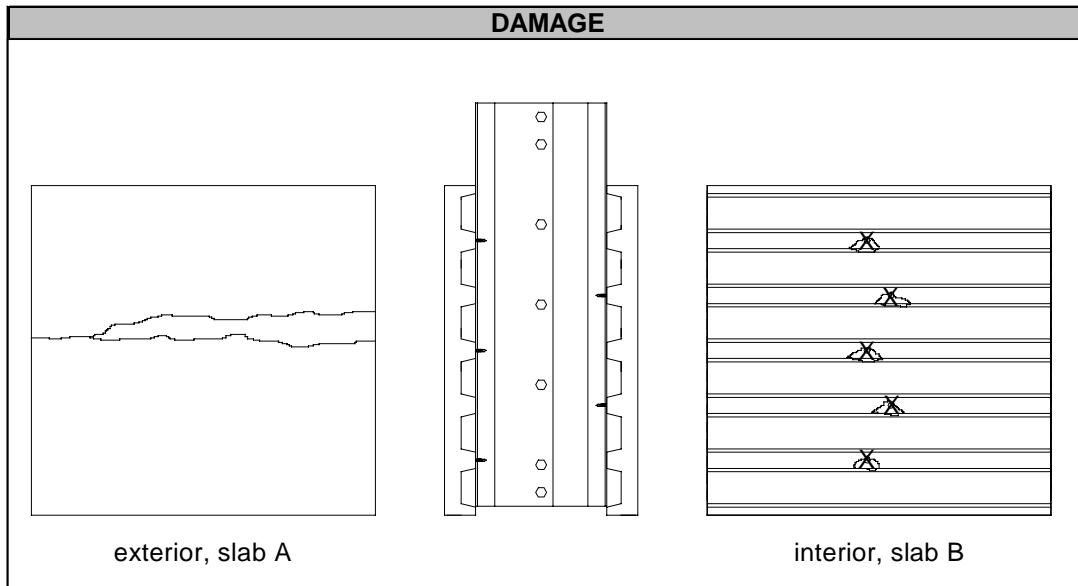
PUSHOUT TEST SUMMARY SHEET

Test: D2-1
 Test Designation: SC-8-3-0.109-1.5VL-3.25-1

Test Date: 10-Jan-98

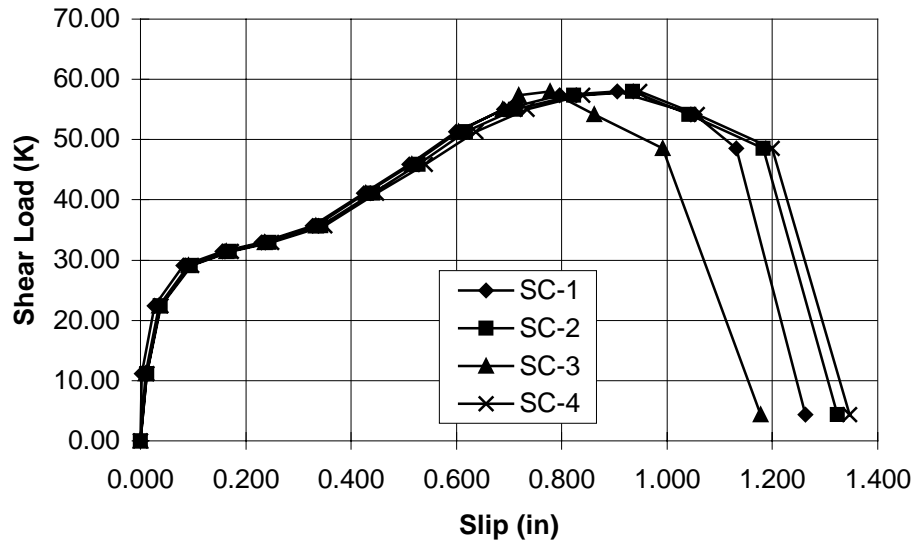
SPECIMEN DESCRIPTION			
Screw:	Height: <u>3.0 in.</u>	No. Per Specimen: <u>10</u>	
Deck:	Type: <u>1.5VL, 22 ga</u>	Width: <u>36 in.</u>	Length: <u>36 in.</u>
	F_y : <u>51.2 ksi</u>	F_u : <u>56.0 ksi</u>	
Base Member:	Section: <u>2L 2x2x0.187</u>		
	F_y : <u>60.7 ksi</u>	F_u : <u>84.8 ksi</u>	
Slab:	Thickness: <u>3.25 in.</u>	f'_c : <u>3568 psi</u>	
Rebar:	Size: <u>No. 4</u>	No. Per Specimen: <u>8</u>	
		Height Above Deck: <u>0.75 in.</u>	
Mesh:	Type: <u>6x6 W2.9xW2.9</u>		

TEST RESULTS			
Peak Shear Load: <u>40.89 kips</u>			
Peak Shear Load Per Screw: <u>4.09 kips</u>			
Slip at Peak Shear Load:		SC1: <u>0.732 in.</u>	SC5: <u>0.781 in.</u>
		SC2: <u>0.798 in.</u>	SC6: <u>0.684 in.</u>
		SC3: <u>0.804 in.</u>	SC7: <u>0.773 in.</u>
		SC4: <u>0.786 in.</u>	SC8: <u>0.717 in.</u>

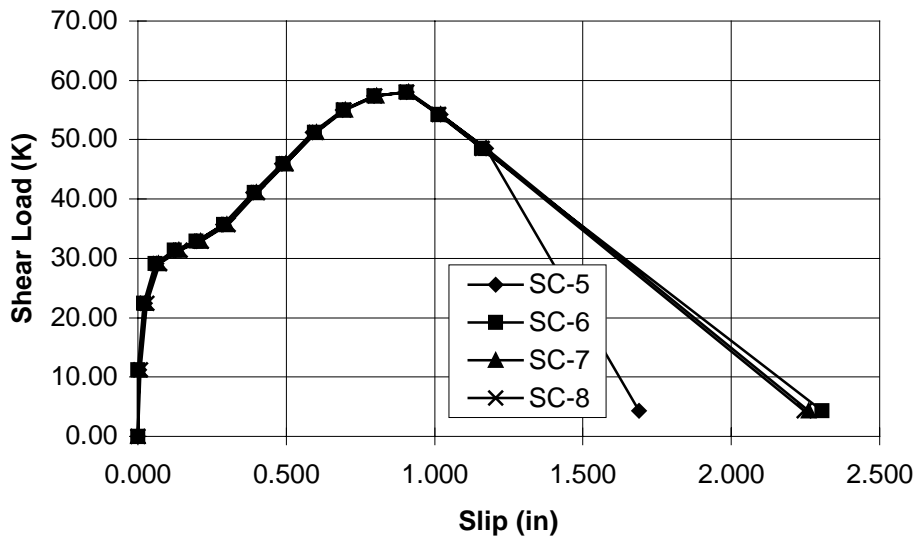


COMMENTS
Failure mode: screw shear. X=screw sheared off. Screw Rotation $\cong 45^\circ$. Deck debonded; bulges in deck below screws.

Test D2-1: Load vs. Slip (A)



Test D2-1: Load vs. Slip (B)



TEST D2-1 DATA

Shear Load (kips)	Normal Load (kips)	Slips (in)							
		SC-1	SC-2	SC-3	SC-4	SC-5	SC-6	SC-7	SC-8
0.00	0.00	0.000	0.000	0.000	0.000	0.000	0.000	0.000	0.000
11.18	1.17	0.003	0.012	0.010	0.012	0.005	0.001	0.005	0.008
22.42	2.11	0.026	0.038	0.035	0.039	0.023	0.018	0.027	0.031
29.08	2.92	0.081	0.095	0.091	0.097	0.063	0.058	0.068	0.073
31.41	3.30	0.156	0.169	0.163	0.173	0.126	0.124	0.138	0.142
32.91	3.51	0.229	0.245	0.235	0.249	0.198	0.197	0.210	0.214
35.68	3.49	0.327	0.343	0.333	0.350	0.288	0.289	0.300	0.305
41.08	4.08	0.424	0.441	0.428	0.449	0.387	0.392	0.400	0.403
45.92	4.82	0.511	0.528	0.516	0.541	0.485	0.490	0.497	0.499
51.26	5.29	0.599	0.617	0.604	0.636	0.590	0.595	0.602	0.599
55.03	5.61	0.690	0.713	0.688	0.734	0.691	0.692	0.698	0.694
57.41	6.44	0.796	0.822	0.718	0.840	0.797	0.795	0.805	0.798
58.04	6.22	0.906	0.934	0.777	0.948	0.907	0.904	0.912	0.906
54.21	6.36	1.053	1.042	0.862	1.057	1.020	1.012	1.021	1.015
48.56	6.51	1.132	1.183	0.991	1.200	1.173	1.159	1.174	1.161
4.33	5.57	1.262	1.323	1.178	1.347	1.689	2.305	2.261	2.244