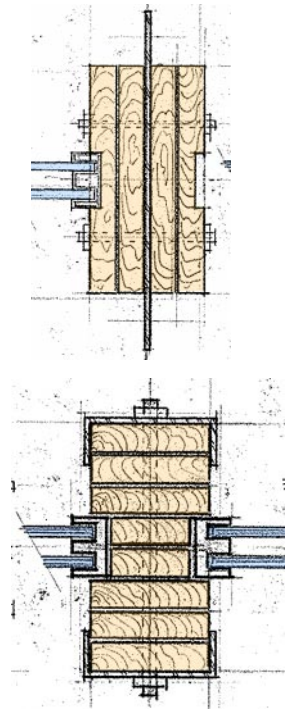
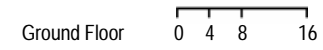
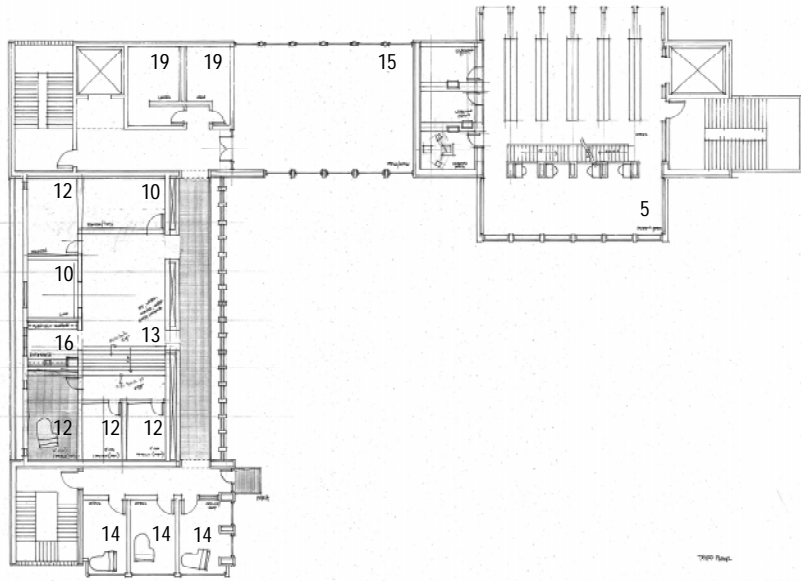


LEGEND

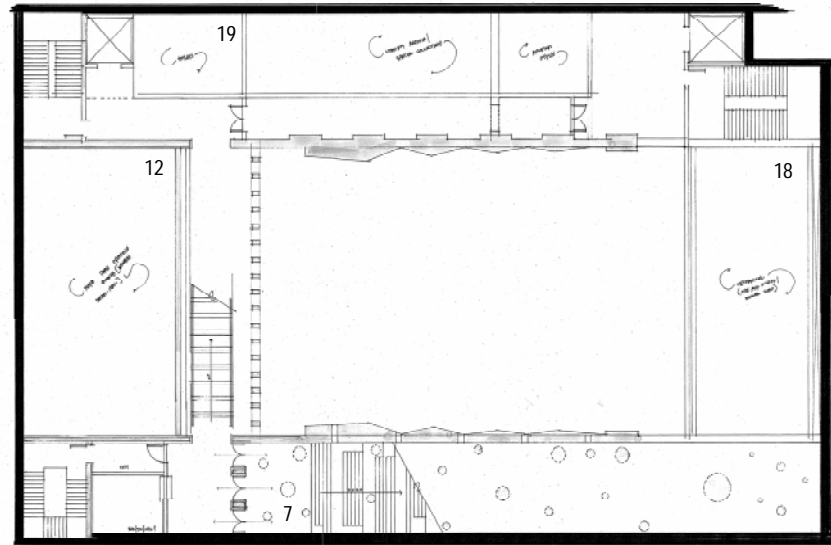
- 1. Recital Hall
- 2. Coat Check
- 3. Lobby/Breakout
- 4. Bookstore/Sales
- 5. Library
- 6. Performance Plaza
- 7. Path to Main Hall
- 8. Grassy Knoll
- 9. Main Performance Hall
- 10. Classroom/Conference
- 11. Digital Media
- 12. Practice Room
- 13. Informal Performance
- 14. Office
- 15. Administration
- 16. Kitchenette
- 17. Storage
- 18. Mechanical
- 19. Toilets



Detail Options at Facade Structure



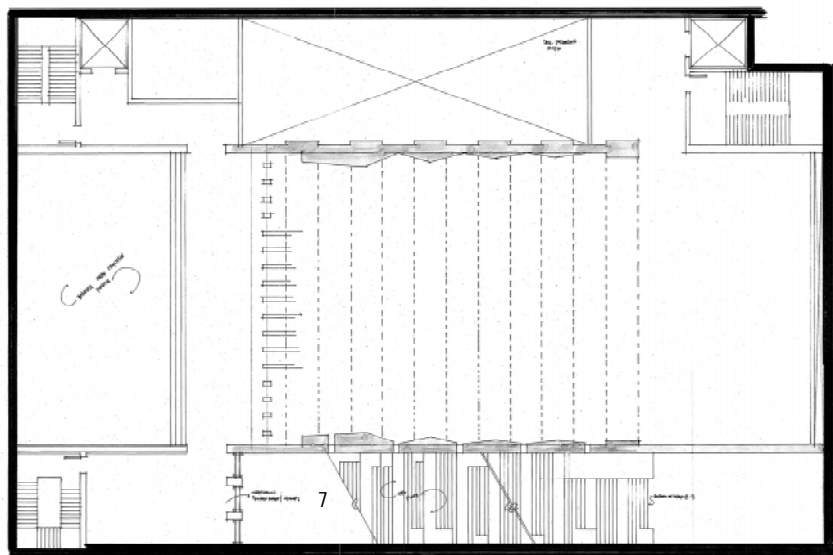
Third Floor



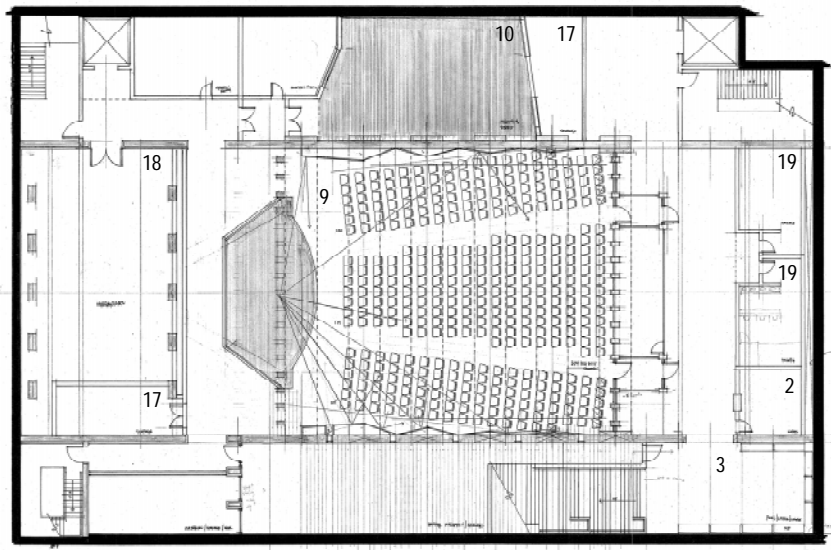
Sub-Level 1

LEGEND

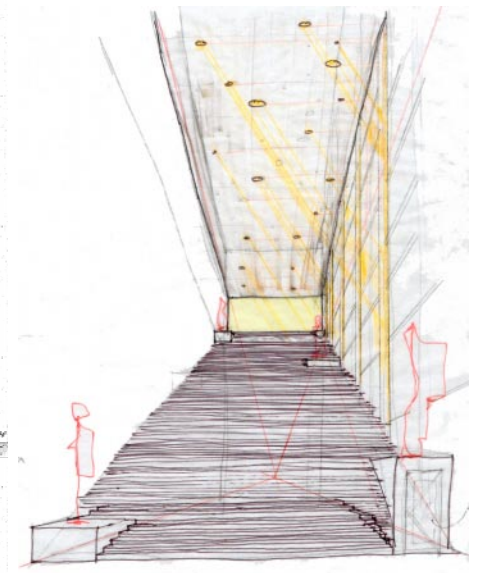
1. Recital Hall
2. Coat Check
3. Lobby/Breakout
4. Bookstore/Sales
5. Library
6. Plaza Performance
7. Path to Main Hall
8. Grassy Knoll
9. Main Performance Hall
10. Classroom/Conference
11. Digital Media
12. Practice Room
13. Informal Performance
14. Office
15. Administration
16. Kitchenette
17. Storage
18. Mechanical
19. Toilets



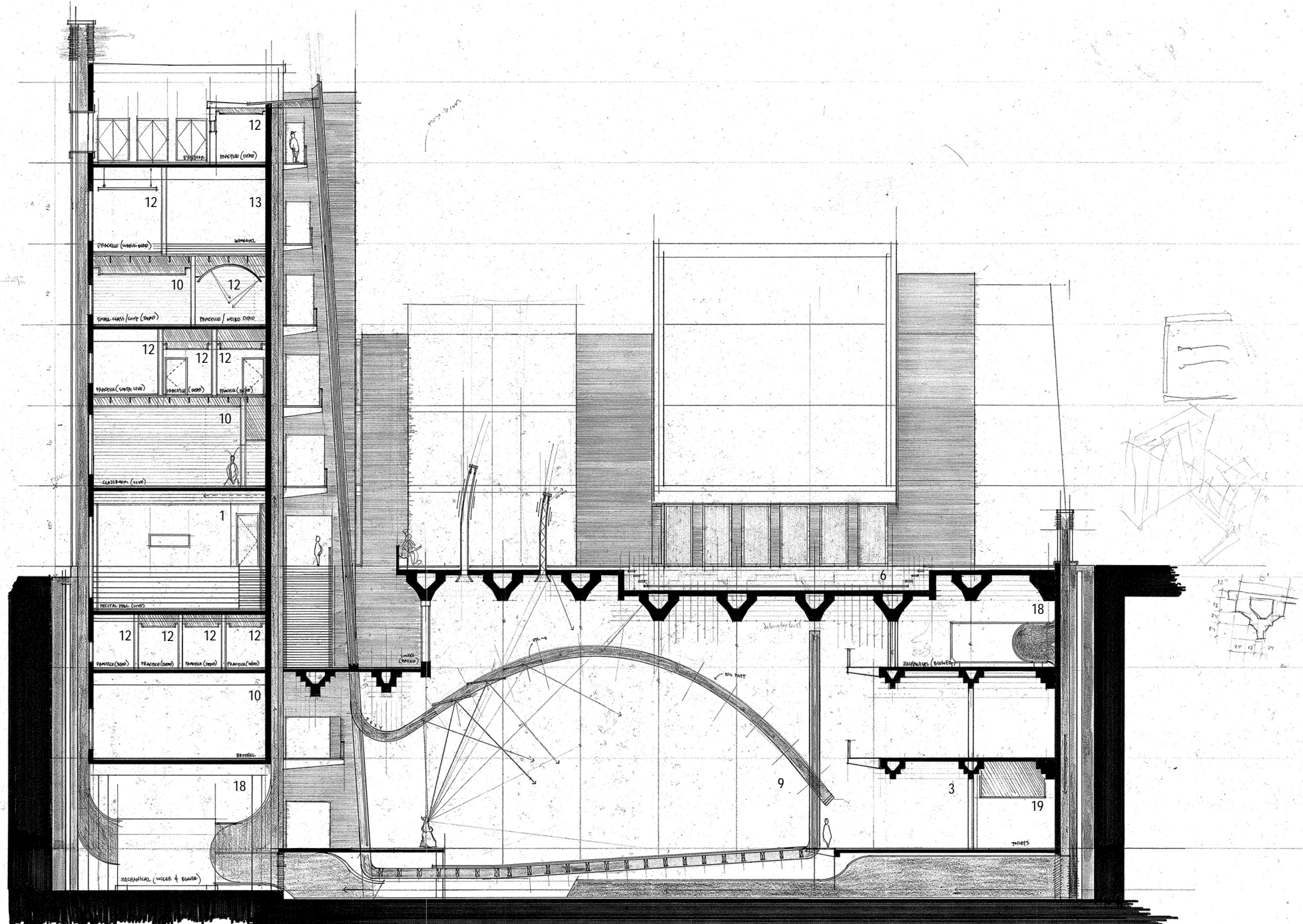
Sub-Level 2



Sub-Level 3



Sketch from sublevel 3 up entry stair

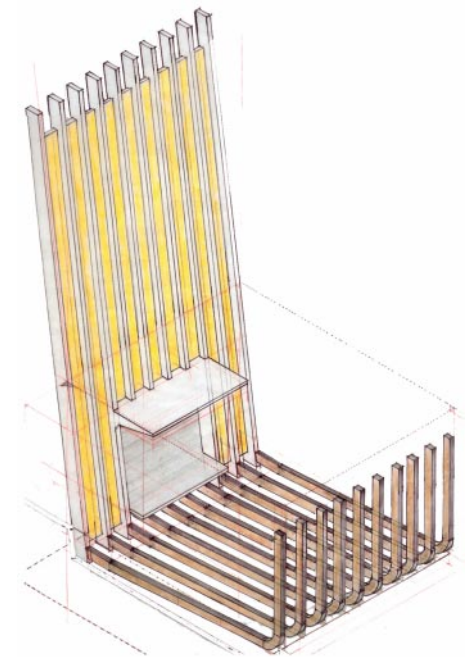


Study Section Looking North Thru Main Performance Hall and Plaza

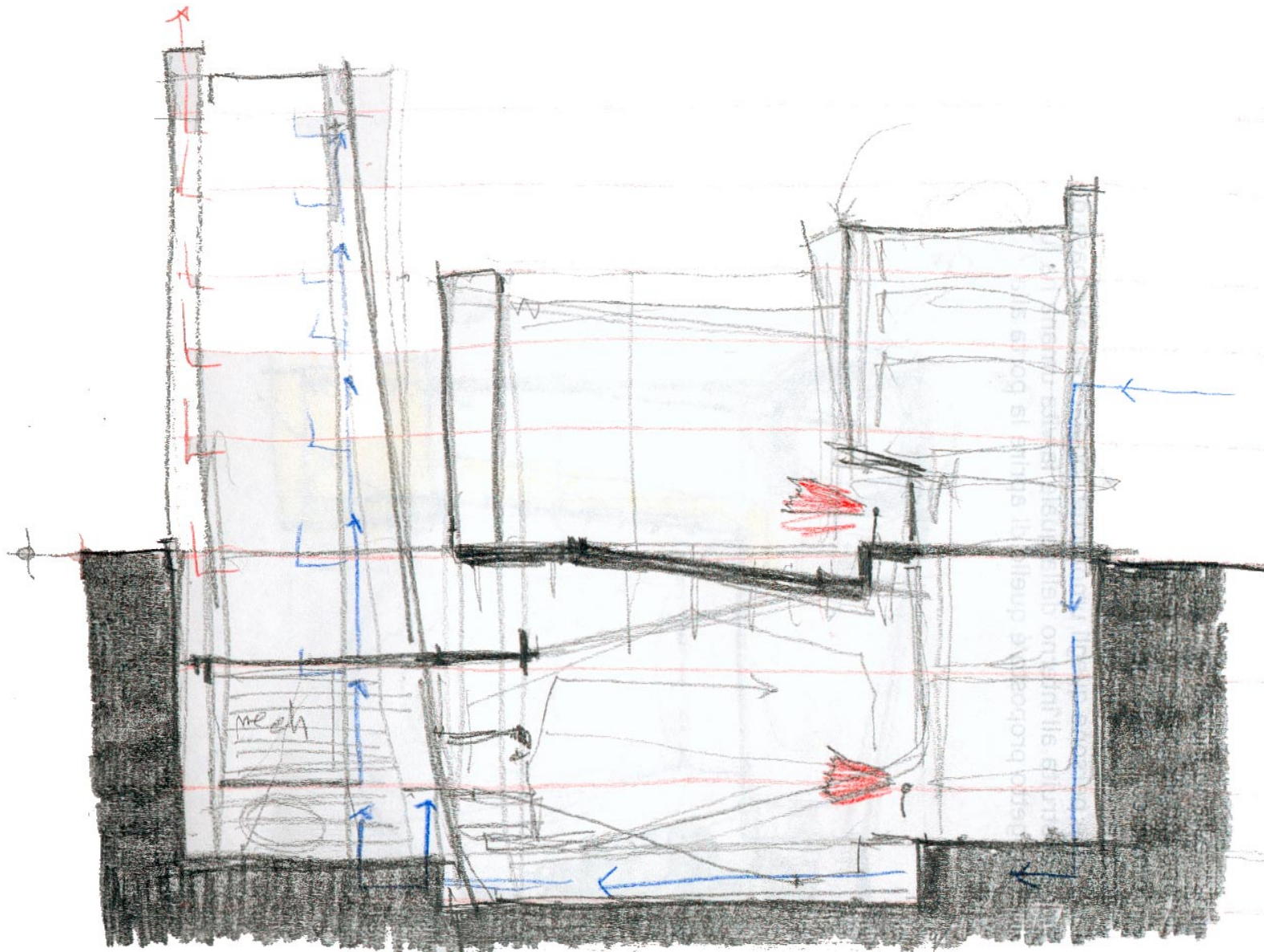
0 4 8 16

LEGEND

1. Recital Hall
2. Coat Check
3. Lobby/Breakout
4. Bookstore/Sales
5. Library
6. Performance Plaza
7. Path to Main Hall
8. Grassy Knoll
9. Main Performance Hall
10. Classroom/Conference
11. Digital Media
12. Practice Room
13. Informal Performance
14. Office
15. Administration
16. Kitchenette
17. Storage
18. Mechanical
19. Toilets

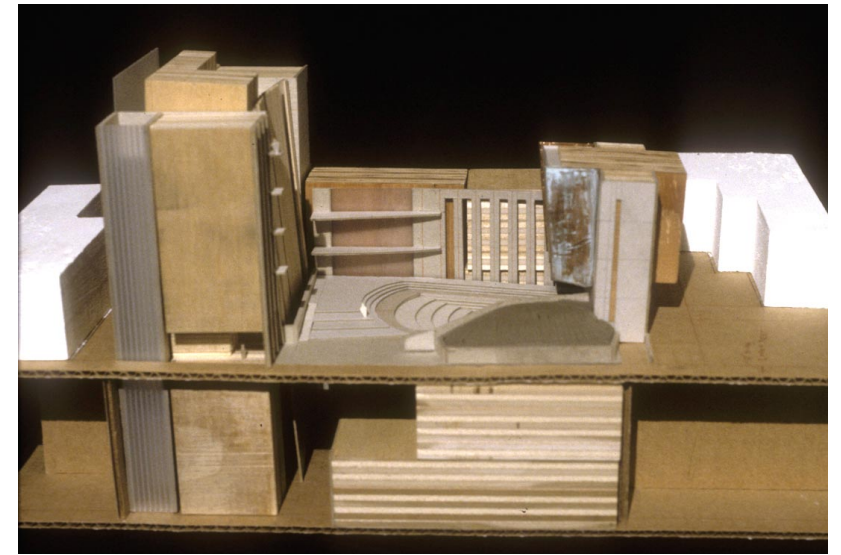


Study Axon at Classroom Tower Facade and Performance Hall support structure

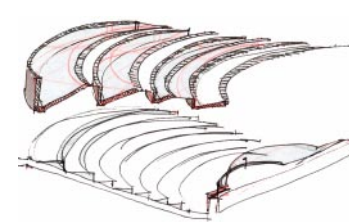


Study Section showing revised location of Library and Performance Plaza

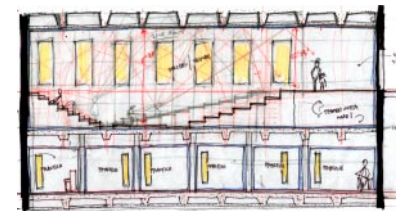
As a final step in the development of the plan, the library was rotated ninety degrees to face the classroom tower. Simultaneously, the main performance hall's orientation was rotated one hundred eighty degrees to match the orientation of the plaza. This accomplished a number of things: it blocked off the eastern edge of the plan from encroachment from any future development; it completed the arms around the empty space of the plaza; it gave a prominence to the performance plaza which prompted the development of the facade of the classroom tower (baffles to catch sound from the exterior stage beneath the library); it set up a tension between the library (place for the study of finished works) and the classroom tower (place for the learning and rehearsal of works); and it finalized the role of the connective wing between the library and the classroom tower (faculty and administrative offices).



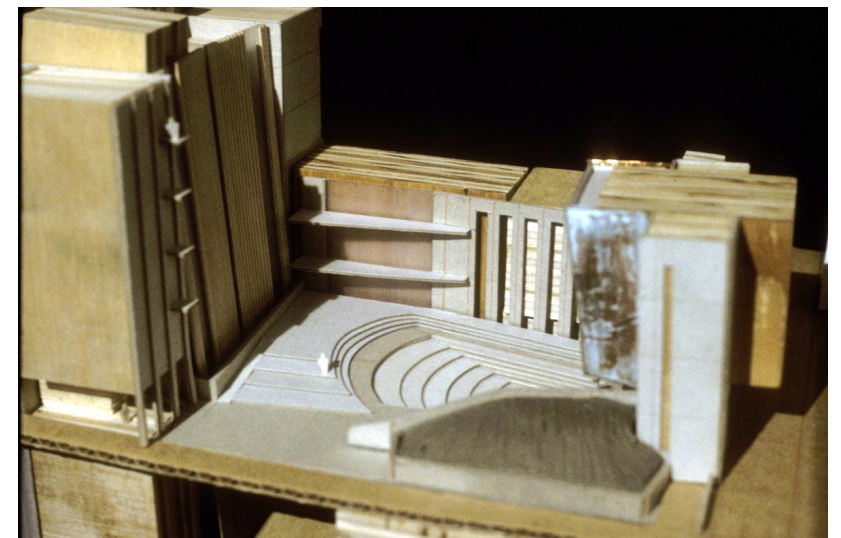
Study Model



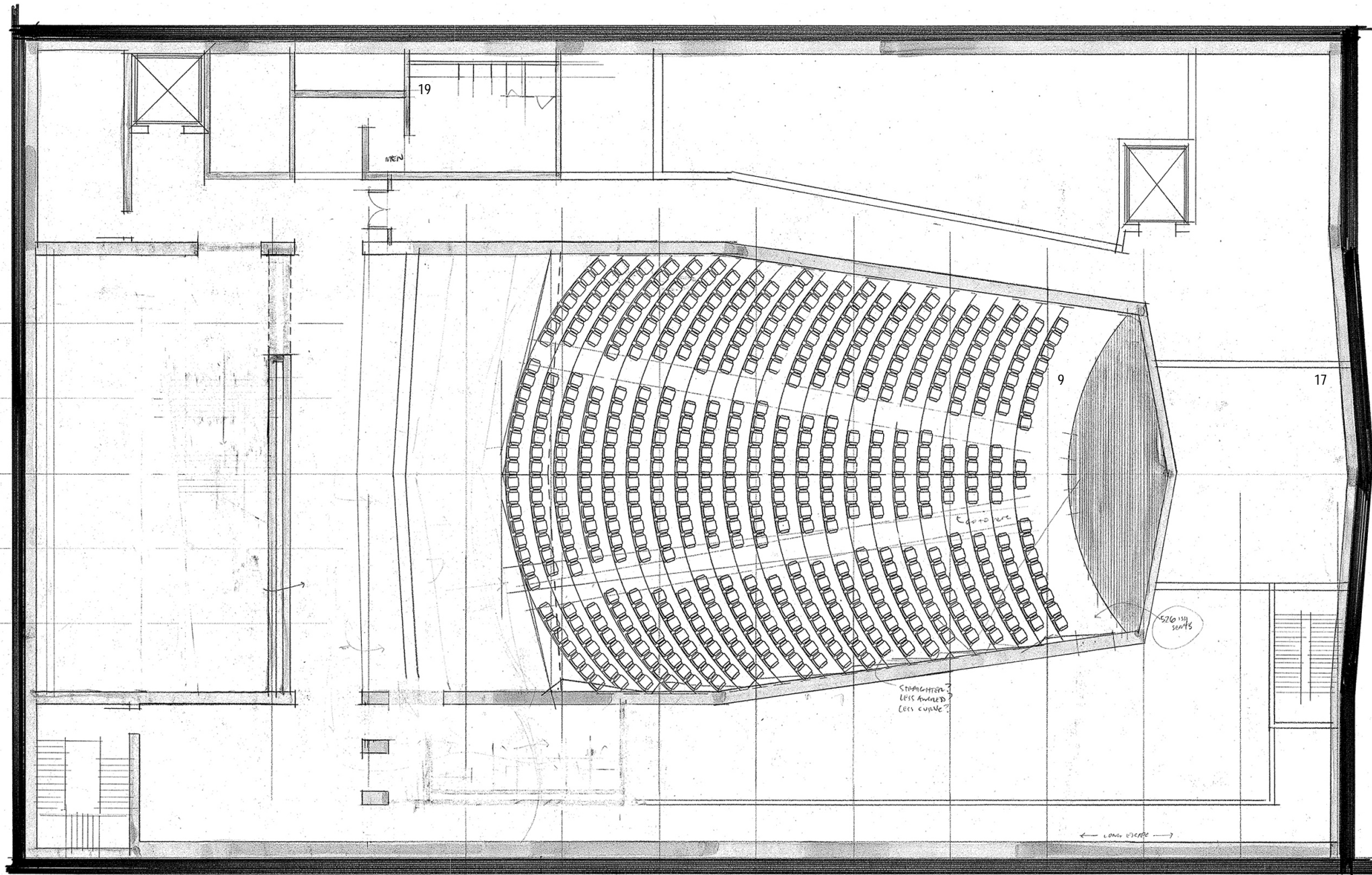
Study Axonometric at Performance Hall



Study Section at Recital Hall

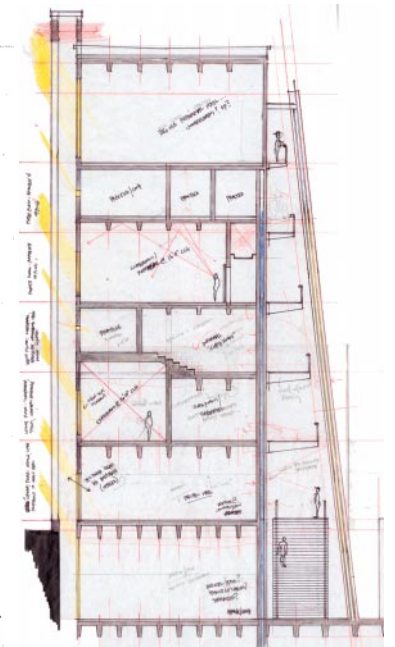


Study Model



LEGEND

- 1. Recital Hall
- 2. Coat Check
- 3. Lobby/Breakout
- 4. Bookstore/Sales
- 5. Library
- 6. Performance Plaza
- 7. Path to Main Hall
- 8. Grassy Knoll
- 9. Main Performance Hall
- 10. Classroom/Conference
- 11. Digital Media
- 12. Practice Room
- 13. Informal Performance
- 14. Office
- 15. Administration
- 16. Kitchenette
- 17. Storage
- 18. Mechanical
- 19. Toilets



Sub-Level Three Plan 0 4 8 16

Sketch Section at Classroom Tower