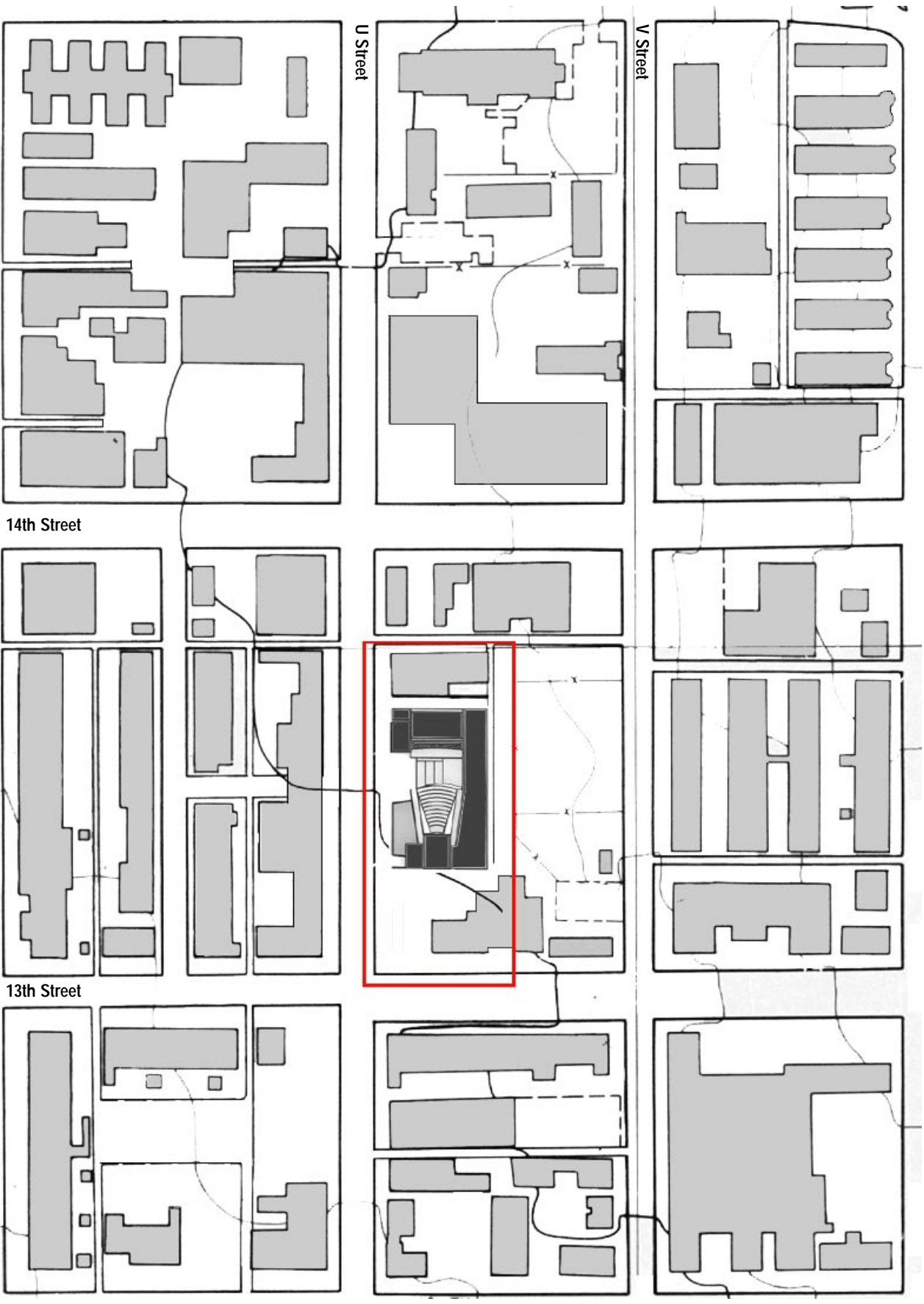
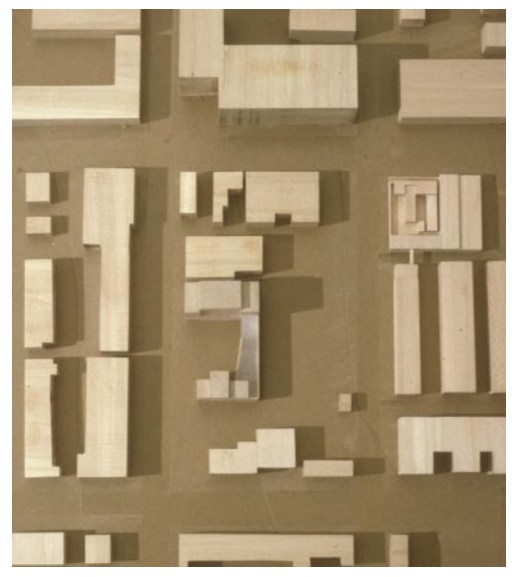
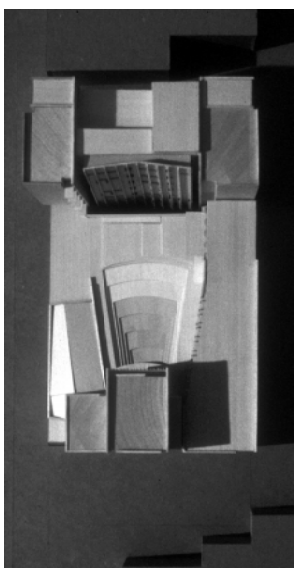


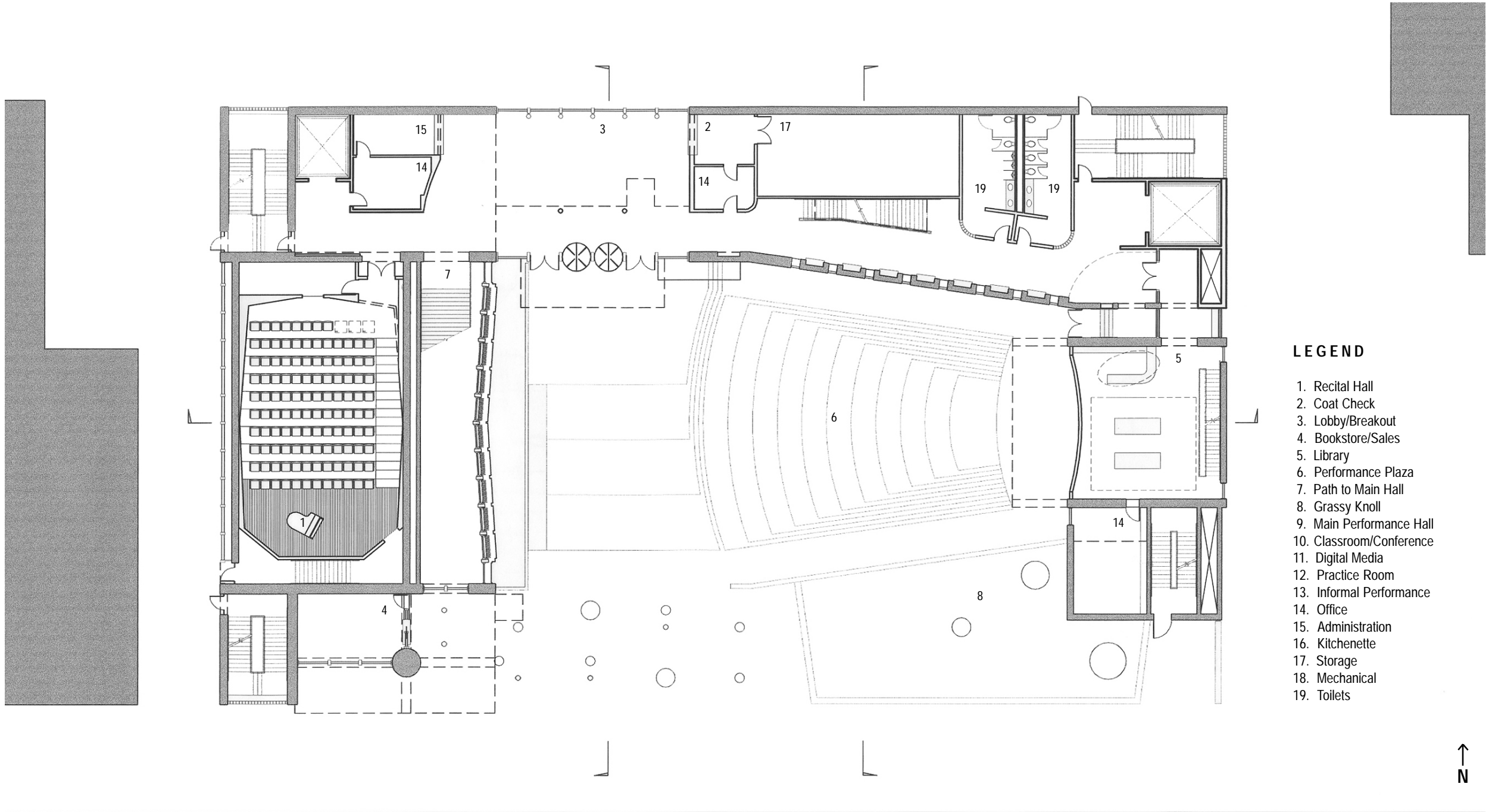
N →

Final Site Plan



Final Site Model

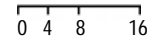


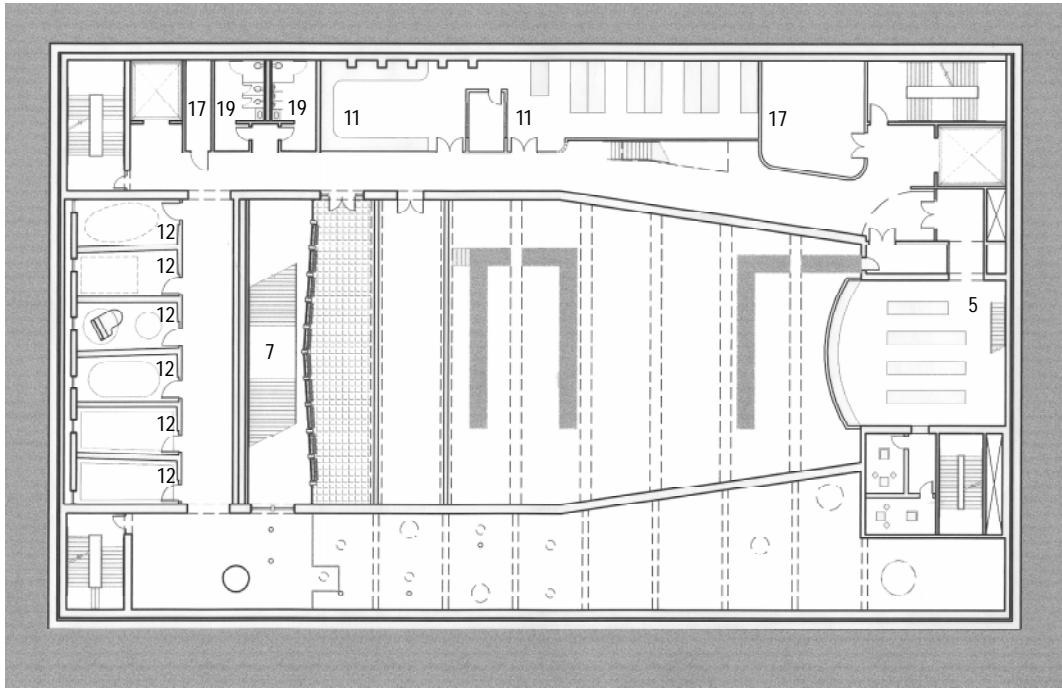


LEGEND

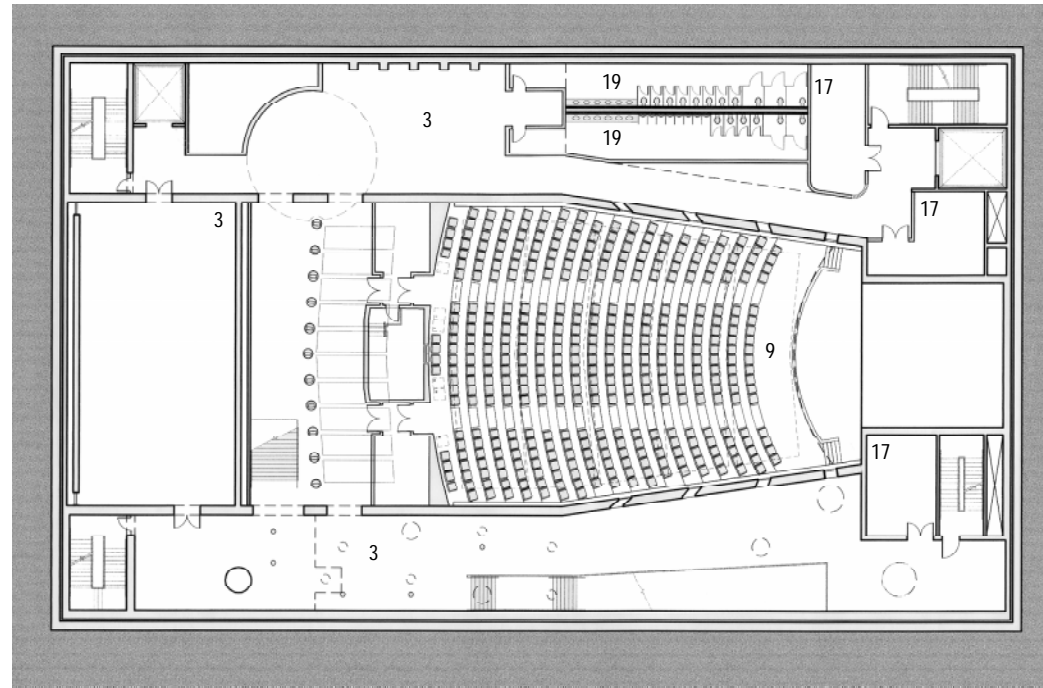
- 1. Recital Hall
- 2. Coat Check
- 3. Lobby/Breakout
- 4. Bookstore/Sales
- 5. Library
- 6. Performance Plaza
- 7. Path to Main Hall
- 8. Grassy Knoll
- 9. Main Performance Hall
- 10. Classroom/Conference
- 11. Digital Media
- 12. Practice Room
- 13. Informal Performance
- 14. Office
- 15. Administration
- 16. Kitchenette
- 17. Storage
- 18. Mechanical
- 19. Toilets

Ground Floor Plan





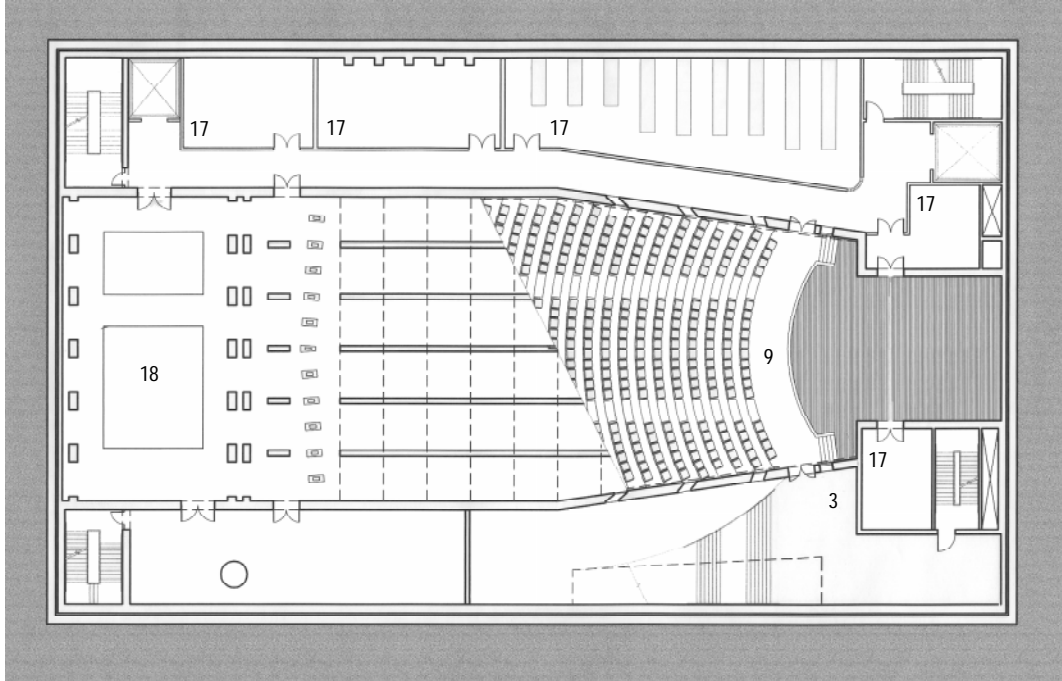
Sub-level 1



Sub-level 2 (Performance Hall main entrance)

LEGEND

1. Recital Hall
2. Coat Check
3. Lobby/Breakout
4. Bookstore/Sales
5. Library
6. Performance Plaza
7. Path to Main Hall
8. Grassy Knoll
9. Main Performance Hall
10. Classroom/Conference
11. Digital Media
12. Practice Room
13. Informal Performance
14. Office
15. Administration
16. Kitchenette
17. Storage
18. Mechanical
19. Toilets



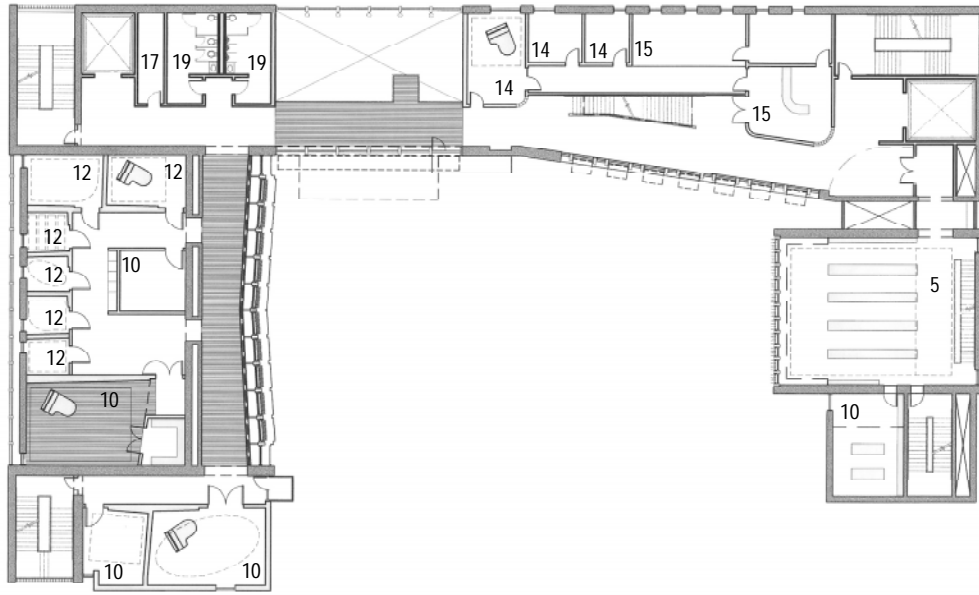
Sub-level 3



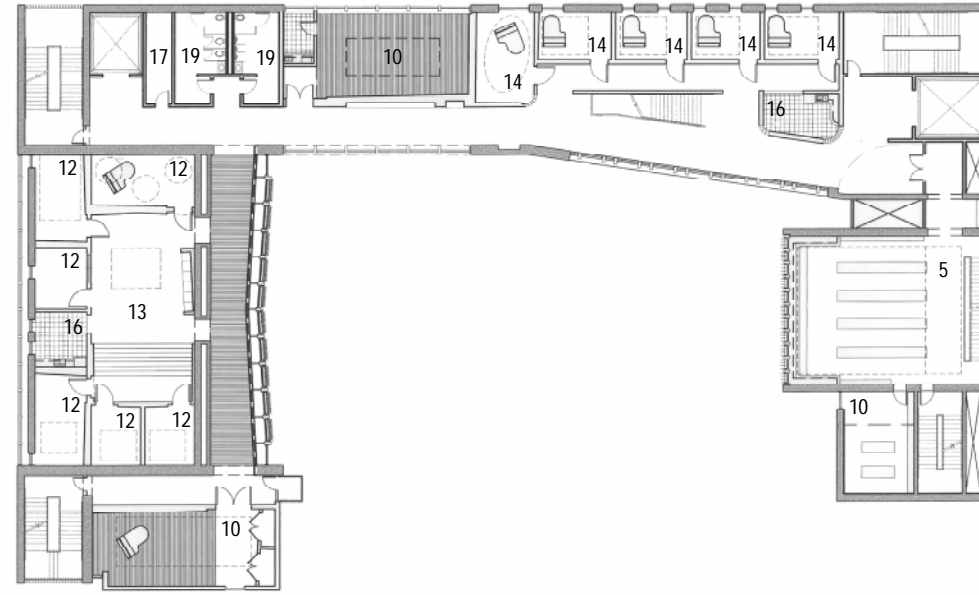
View from stage to rear of Performance Hall



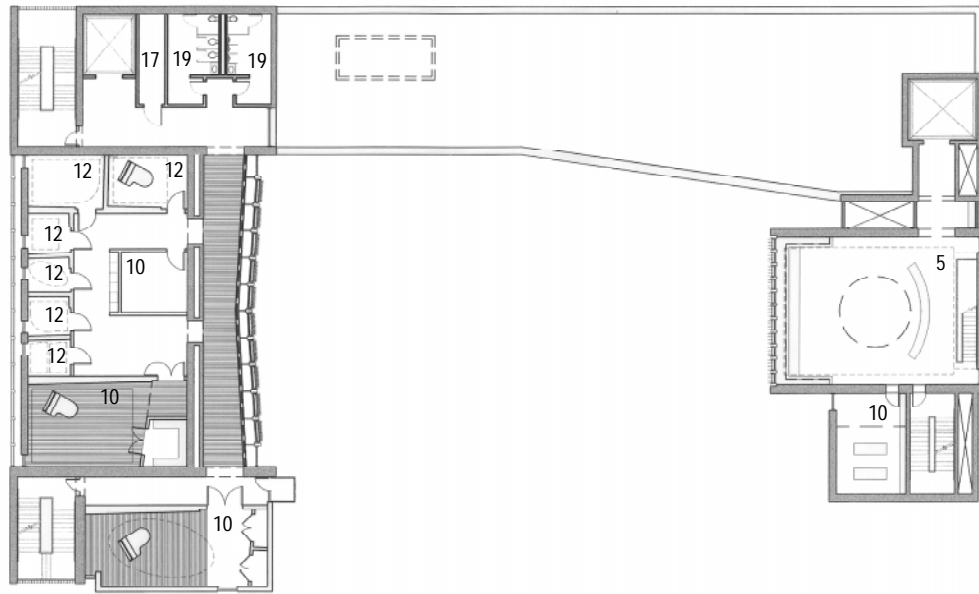
View through lobby outside of Performance Hall



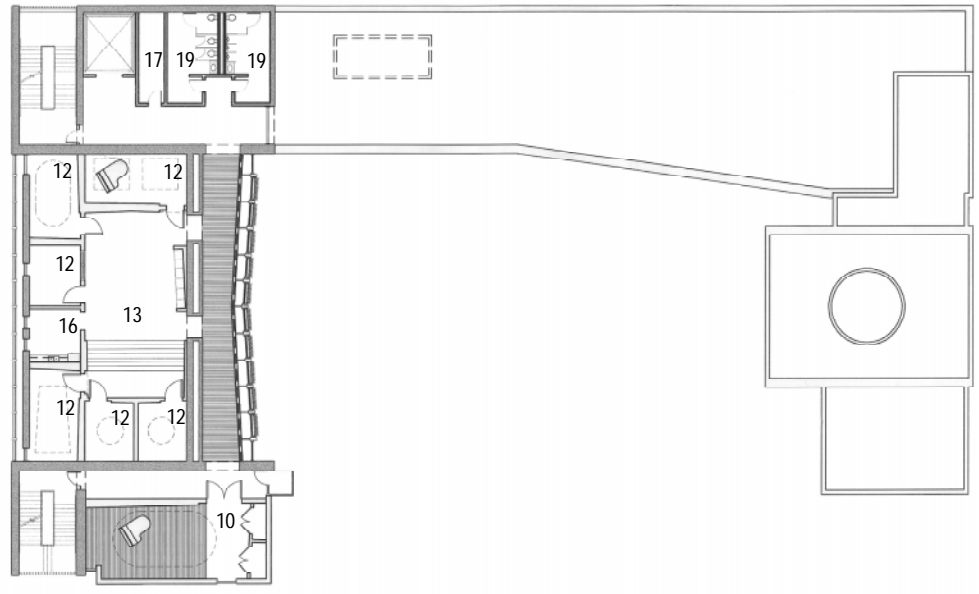
Second Floor



Third Floor



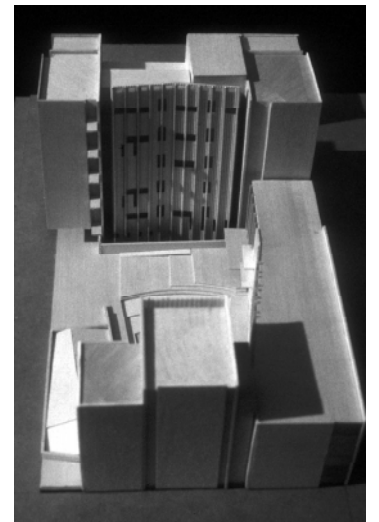
Fourth Floor

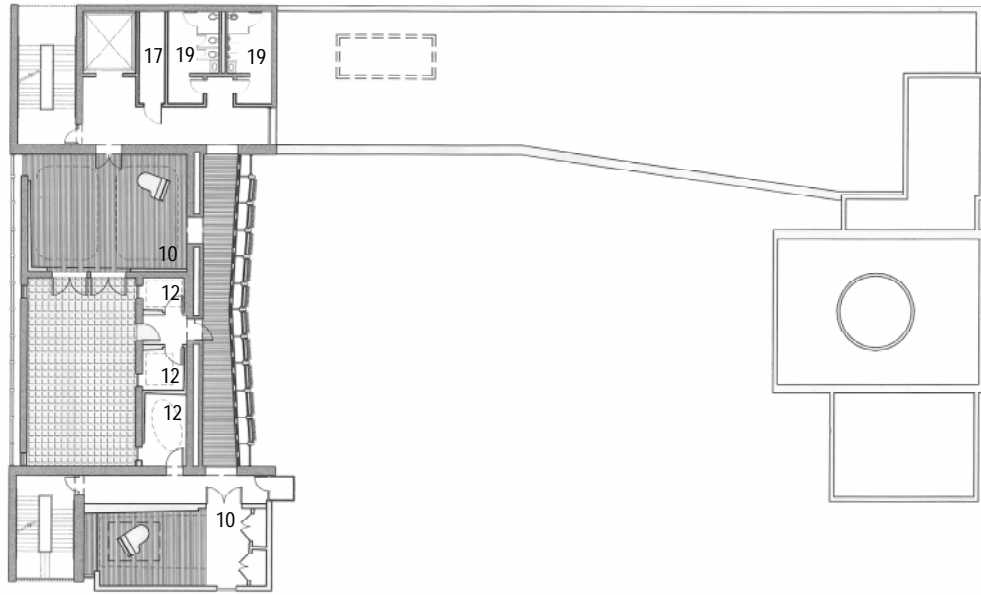


Fifth Floor

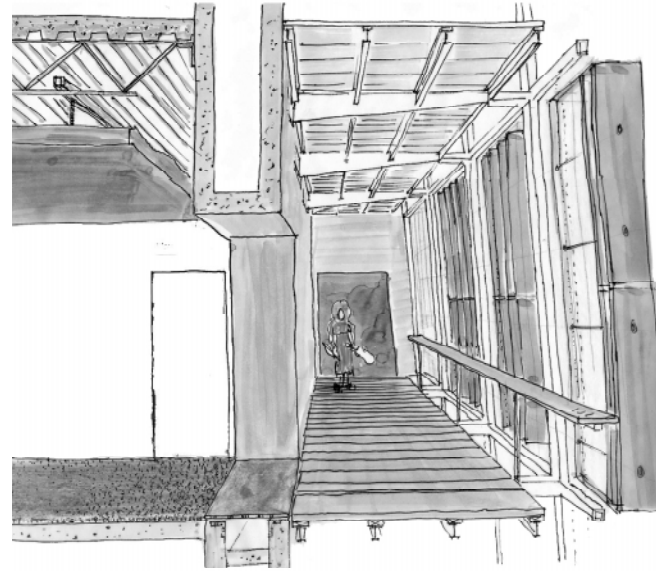
LEGEND

- 1. Recital Hall
- 2. Coat Check
- 3. Lobby/Breakout
- 4. Bookstore/Sales
- 5. Library
- 6. Performance Plaza
- 7. Path to Main Hall
- 8. Grassy Knoll
- 9. Main Performance Hall
- 10. Classroom/Conference
- 11. Digital Media
- 12. Practice Room
- 13. Informal Performance
- 14. Office
- 15. Administration
- 16. Kitchenette
- 17. Storage
- 18. Mechanical
- 19. Toilets

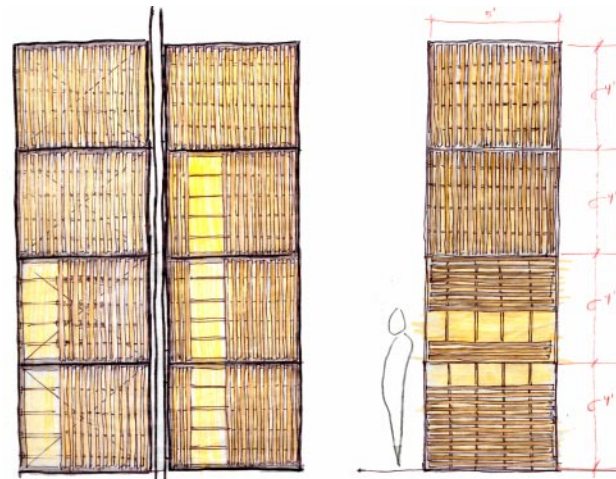




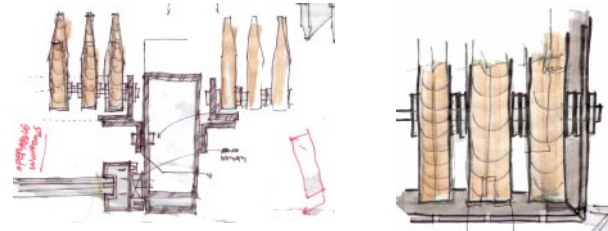
Sixth Floor



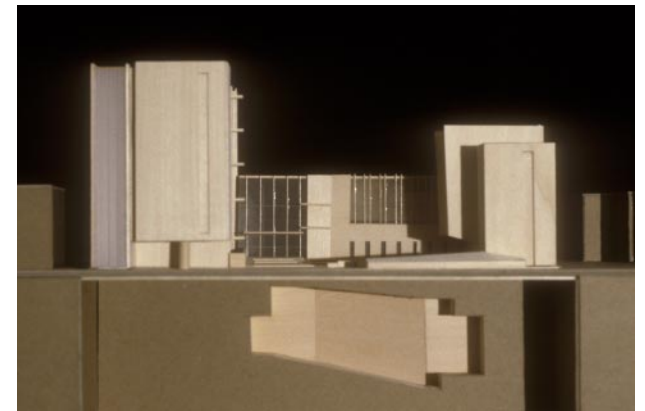
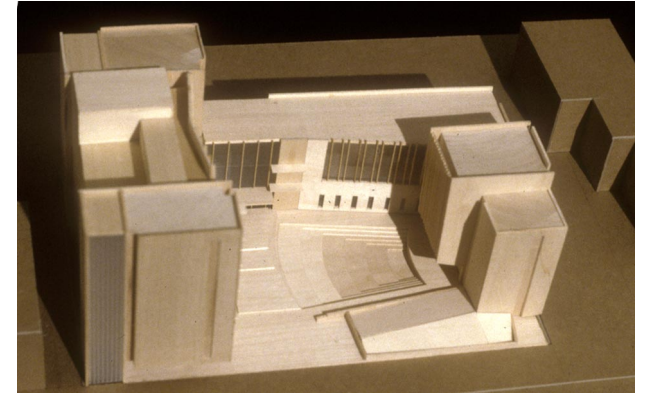
View at Classroom Tower through Main Corridor



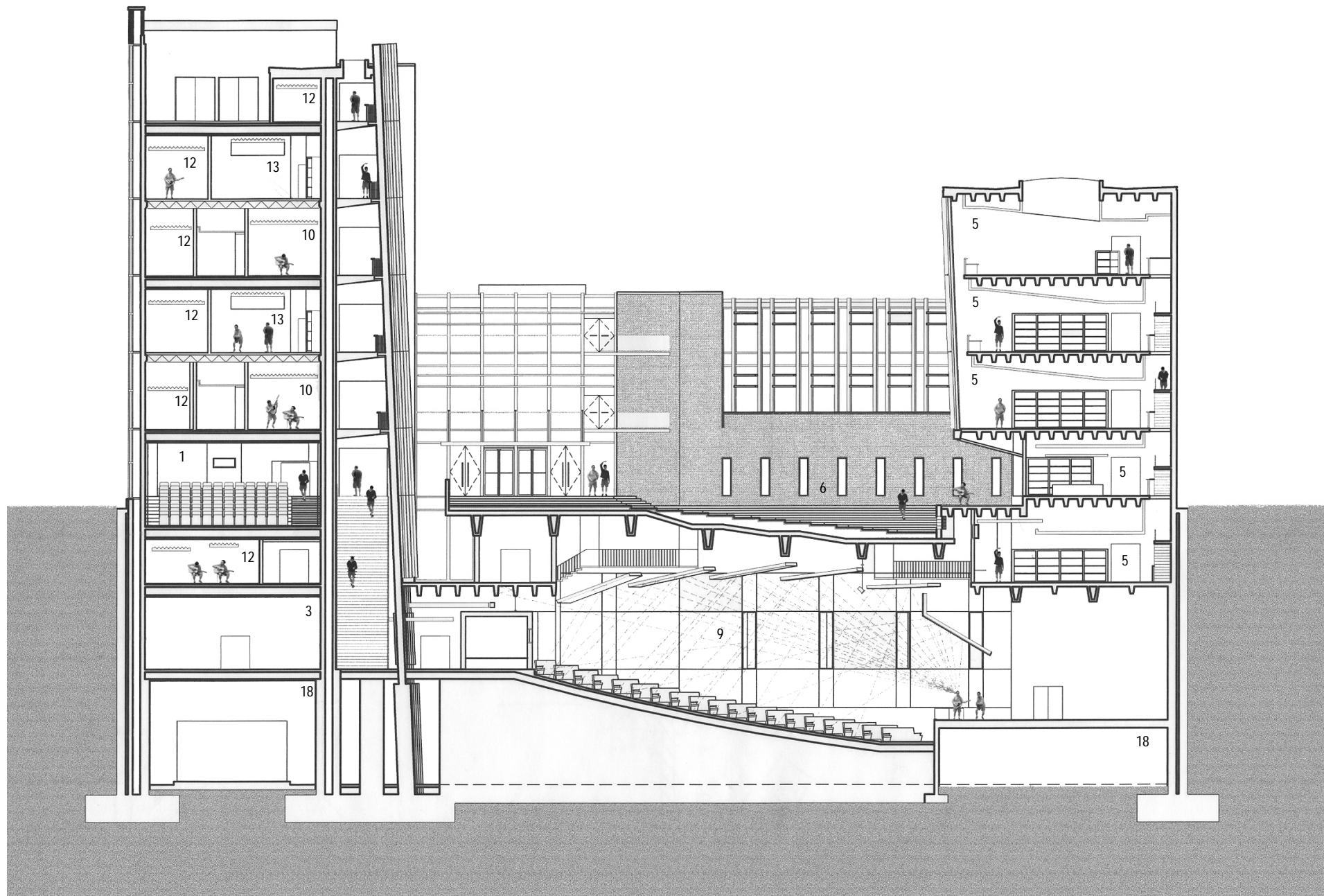
Enlarged Elevation at Classroom Tower Facade Panels



Details at Classroom Tower Facade Panels



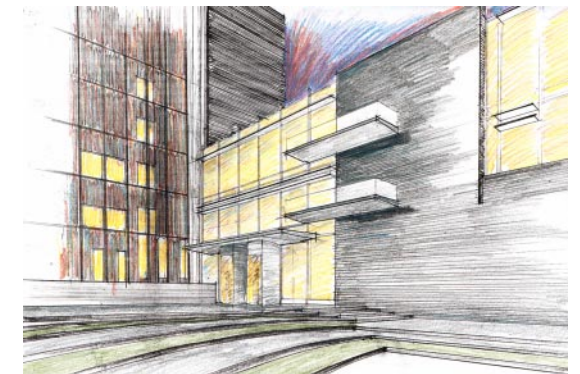
Final Model



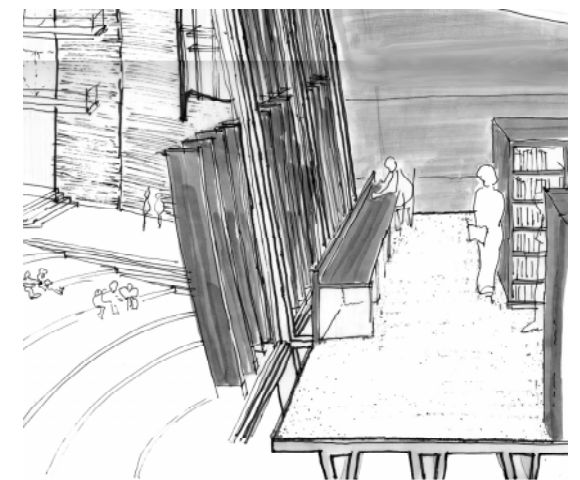
Section looking North through Performance Hall 0 4 8 16

LEGEND

- | | |
|--------------------------|--------------------------|
| 1. Recital Hall | 12. Practice Room |
| 2. Coat Check | 13. Informal Performance |
| 3. Lobby/Breakout | 14. Office |
| 4. Bookstore/Sales | 15. Administration |
| 5. Library | 16. Kitchenette |
| 6. Performance Plaza | 17. Storage |
| 7. Path to Main Hall | 18. Mechanical |
| 8. Grassy Knoll | 19. Toilets |
| 9. Main Performance Hall | |
| 10. Classroom/Conference | |
| 11. Digital Media | |



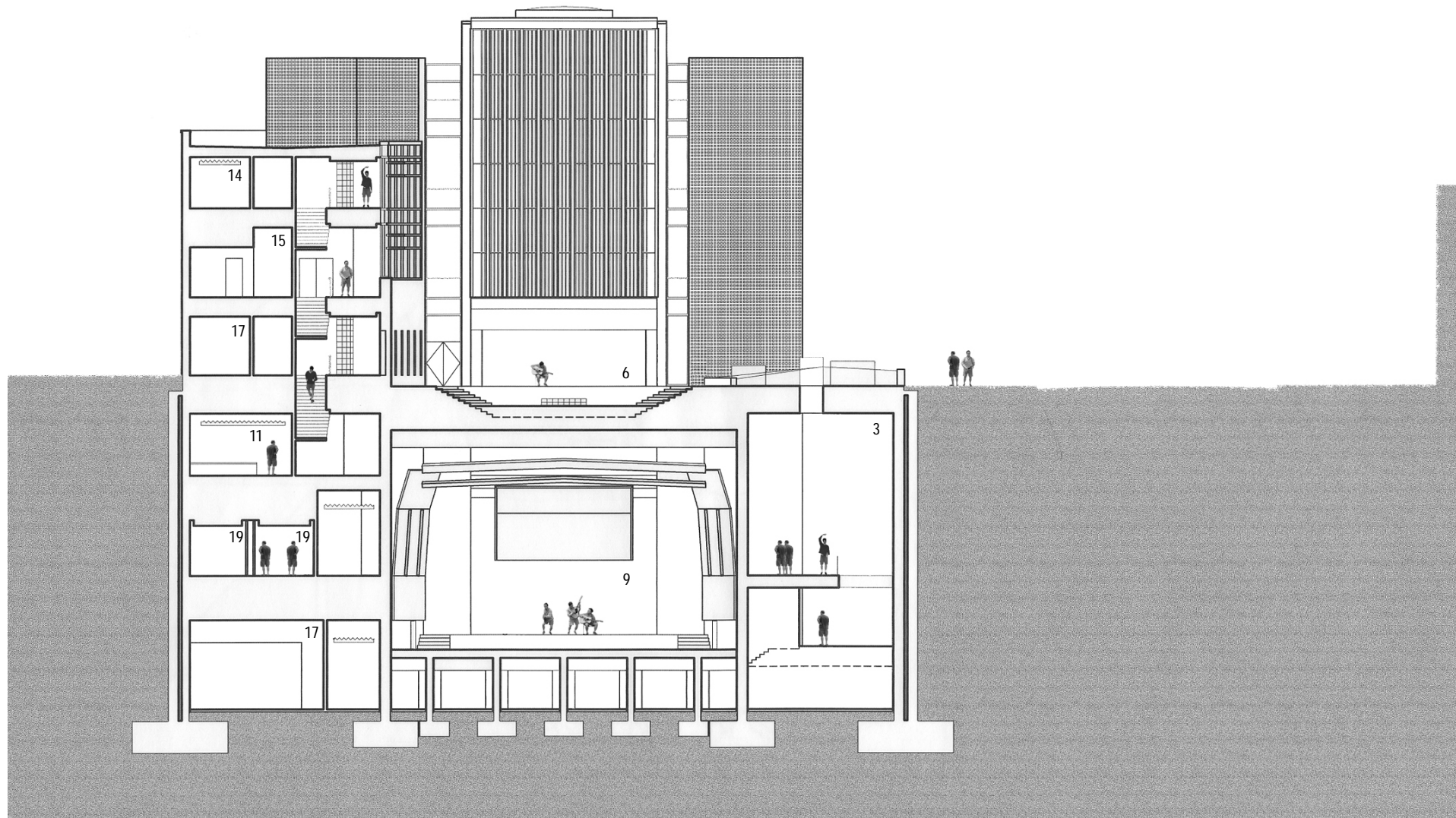
View from Performance Plaza to Building Entrance



View at Library overlooking Performance Plaza

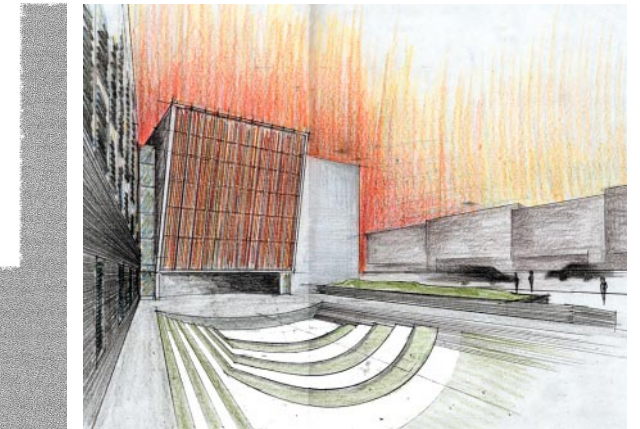
LEGEND

- | | |
|--------------------------|--------------------|
| 1. Recital Hall | 14. Office |
| 2. Coat Check | 15. Administration |
| 3. Lobby/Breakout | 16. Kitchenette |
| 4. Bookstore/Sales | 17. Storage |
| 5. Library | 18. Mechanical |
| 6. Performance Plaza | 19. Toilets |
| 7. Path to Main Hall | |
| 8. Grassy Knoll | |
| 9. Main Performance Hall | |
| 10. Classroom/Conference | |
| 11. Digital Media | |
| 12. Practice Room | |
| 13. Informal Performance | |

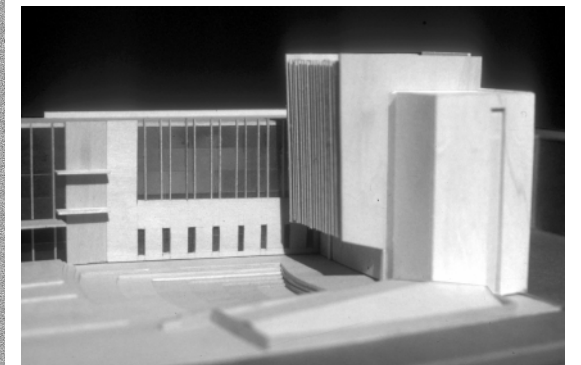


Section looking East through Performance Hall

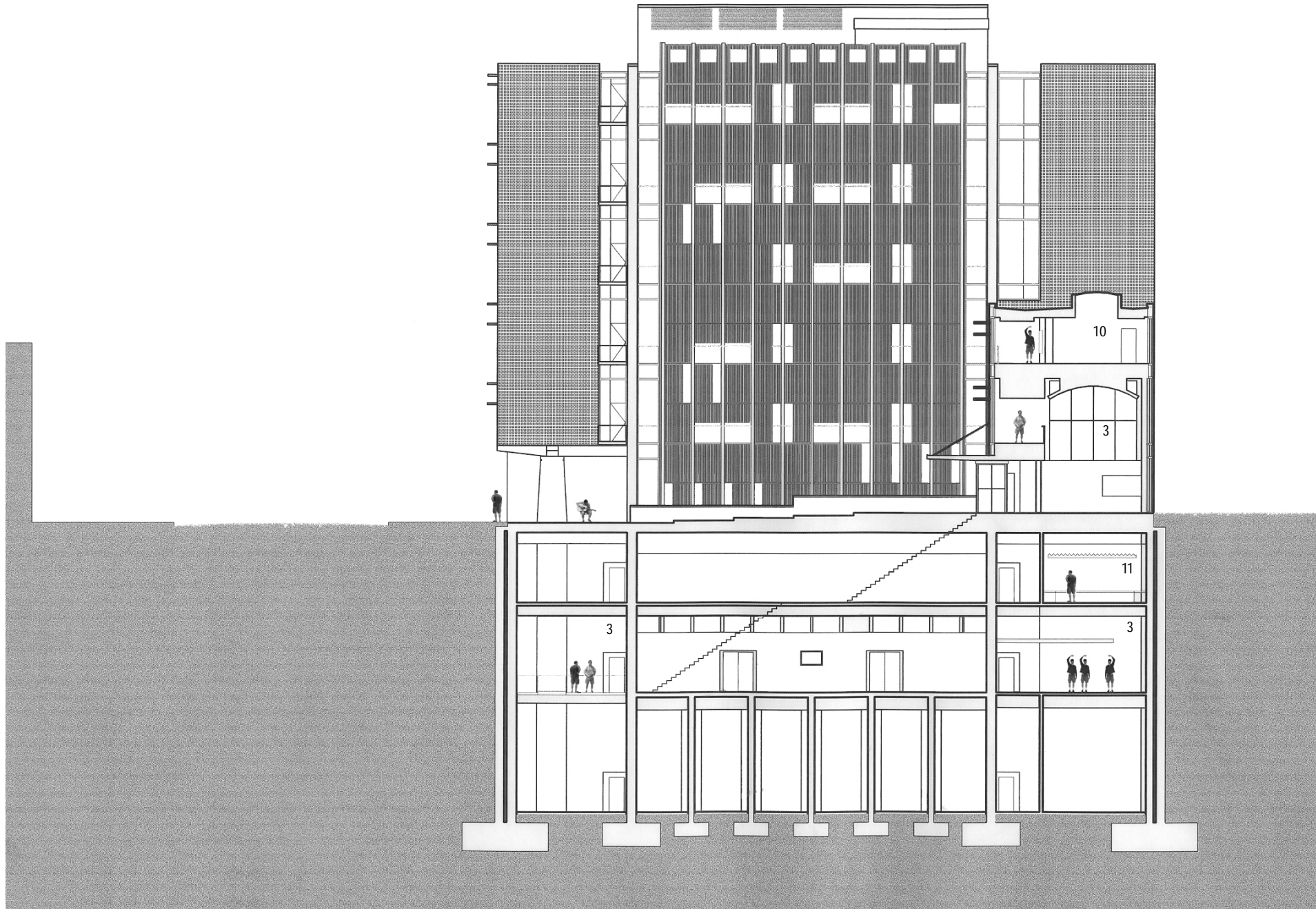
0 4 8 16



View from Main Entrance towards Library and Performance Plaza



Final Model View at Library and Performance Plaza

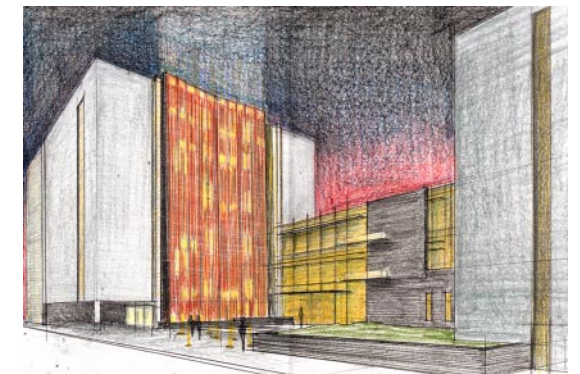


Section looking West through Performance Hall Lobby

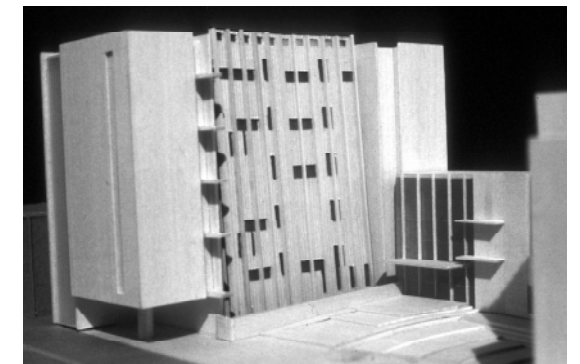
0 4 8 16

LEGEND

- | | |
|--------------------------|-----------------|
| 1. Recital Hall | 16. Kitchenette |
| 2. Coat Check | 17. Storage |
| 3. Lobby/Breakout | 18. Mechanical |
| 4. Bookstore/Sales | 19. Toilets |
| 5. Library | |
| 6. Performance Plaza | |
| 7. Path to Main Hall | |
| 8. Grassy Knoll | |
| 9. Main Performance Hall | |
| 10. Classroom/Conference | |
| 11. Digital Media | |
| 12. Practice Room | |
| 13. Informal Performance | |
| 14. Office | |
| 15. Administration | |



View from U Street Towards Classroom Tower and Front Entrance



Final Model View at Classroom Tower

Bibliography

The Complete Works of Ralph Waldo Emerson, (New York: AMS Pres, 1968)

Eileen Gray: Architect/Designer, Adam, Peter (New York: H.N. Abrams, 1987)

Le Corbusier, et son atelier rue de Sevres 35, (Switzerland: Artemis, 1965)

Louis I. Kahn, Complete Work 1935-1974, Ronnor, Heinz and Jhaveri, Sharad (Basel: Birkhauser, 1987)

Music, Acoustics, and Architecture, Beranek, Leo L. (New York: John Wiley and Sons, 1962)

Renzo Piano; Buildings and Projects 1971-1989, (New York: Rizzoli International Publications, 1989)

Williams Tsien, Works, 2G International Architecture Review No. 9, (Barcelona: Editorial Gustavo Gili, SA, 1999)

Thinking Architecture, Peter Zumthor (Basel: Birkhauser, 1999)

Credit

Final Model built by John White and James Cooke

Final Presentation color perspectives drawn by Jon Zellweger

Final Presentation black & white perspectives drawn by Vincent Whitehurst



V I T A

Evan S. Mann

Education

Bachelor of Science in Design,
Clemson University, May 1994

Masters of Architecture, Virginia Polytechnic and State University, the Washington Alexandria Architecture Consortium,
December 2003

Work

FJ Clark Inc., Anderson, SC
August 1994 - August 1999

Envision Design, PLLC, Washington, DC
May 2000 - August 2000

RTKL Associates, Inc., Washington, DC
February 2002 - June 2003

Rawk

supergroup (1994-1996)

Big Pants Ensemble (1996-1997)

The Kleptomaniacs (1997-present)

Niko vs. the PSR6 (fall 2000)

