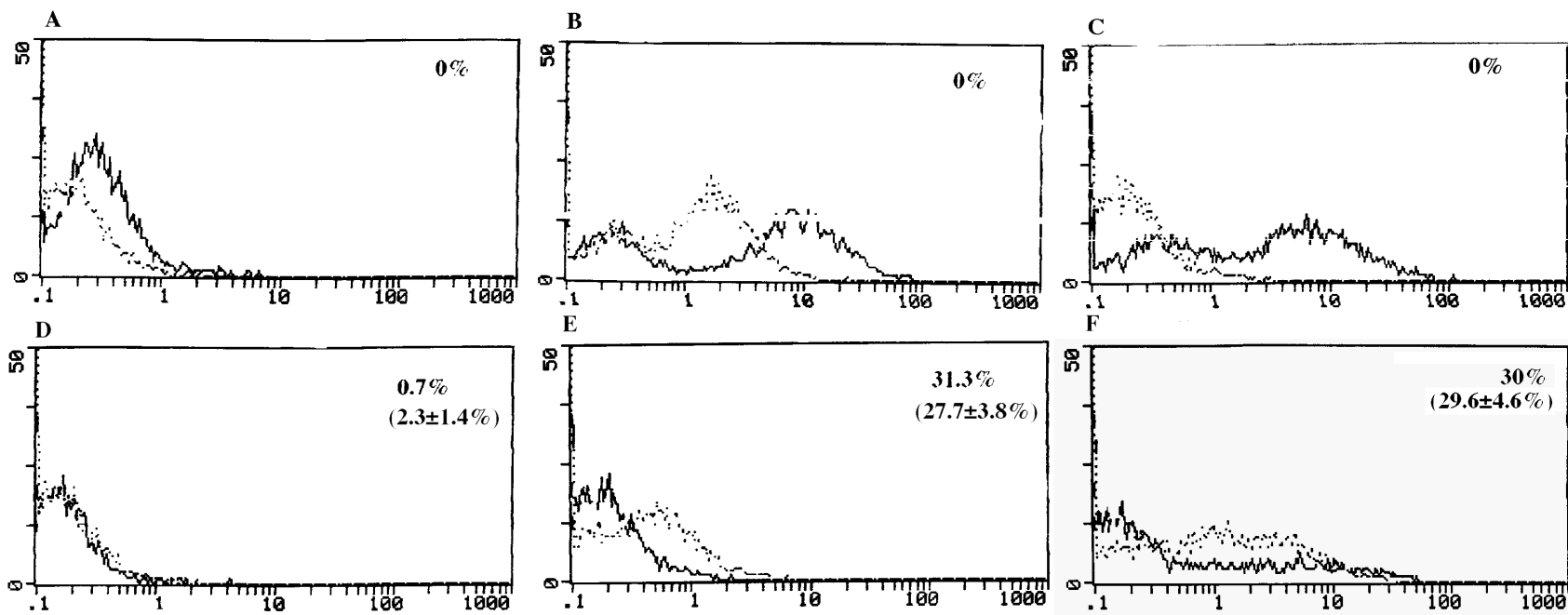


Figure 16. *Apoptosis in axillary and popliteal LN cells on day 3 after vehicle/TCDD treatment and footpad immunizations with anti-CD3 mAbs.* Three days after vehicle/TCDD treatment and immunizations with anti-CD3 mAbs, axillary (A, B, C) and popliteal (D, E, F) lymph node cells were removed. Cells were stained immediately (fresh) (A, D), or cultured for 24 hours with medium alone (B, E) or in the presence of anti-CD3 mAbs (C, F). Results for the oil-treated control are shown as bold histograms; results for the TCDD-treated cells are shown as dotted histograms. Apoptosis is indicated as a positive shift in fluorescence (curve shift towards the right) on the diagram. The percentages of increased apoptosis in the TCDD-treated cells are depicted in the upper right-hand corner of each histogram. The mean \pm SD of four experiments is shown in parentheses. The y-axis shows the number of cells, while the x-axis represents the intensity of fluorescence, expressed on a logarithmic scale.



Fluorescent Intensity

Figure 17. Apoptosis in axillary and popliteal LN cells on day 5 after vehicle/TCDD treatment and footpad immunizations with anti-CD3 mAbs. Five days after vehicle/TCDD treatment and immunizations with anti-CD3 mAbs, axillary (A, B, C) and popliteal (D, E, F) lymph node cells were removed. Cells were stained immediately (fresh) (A, D), or cultured for 24 hours with medium alone (B, E) or in the presence of anti-CD3 mAbs (C, F). Results for the oil-treated control are shown as bold histograms; results for the TCDD-treated cells are shown as dotted histograms. Apoptosis is indicated as a positive shift in fluorescence (curve shift towards the right) on the diagram. The percentages of increased apoptosis in the TCDD-treated cells are depicted in the upper right-hand corner of each histogram. The mean \pm SD of four experiments is shown in parentheses. The y-axis shows the number of cells, while the x-axis represents the intensity of fluorescence, expressed on a logarithmic scale.

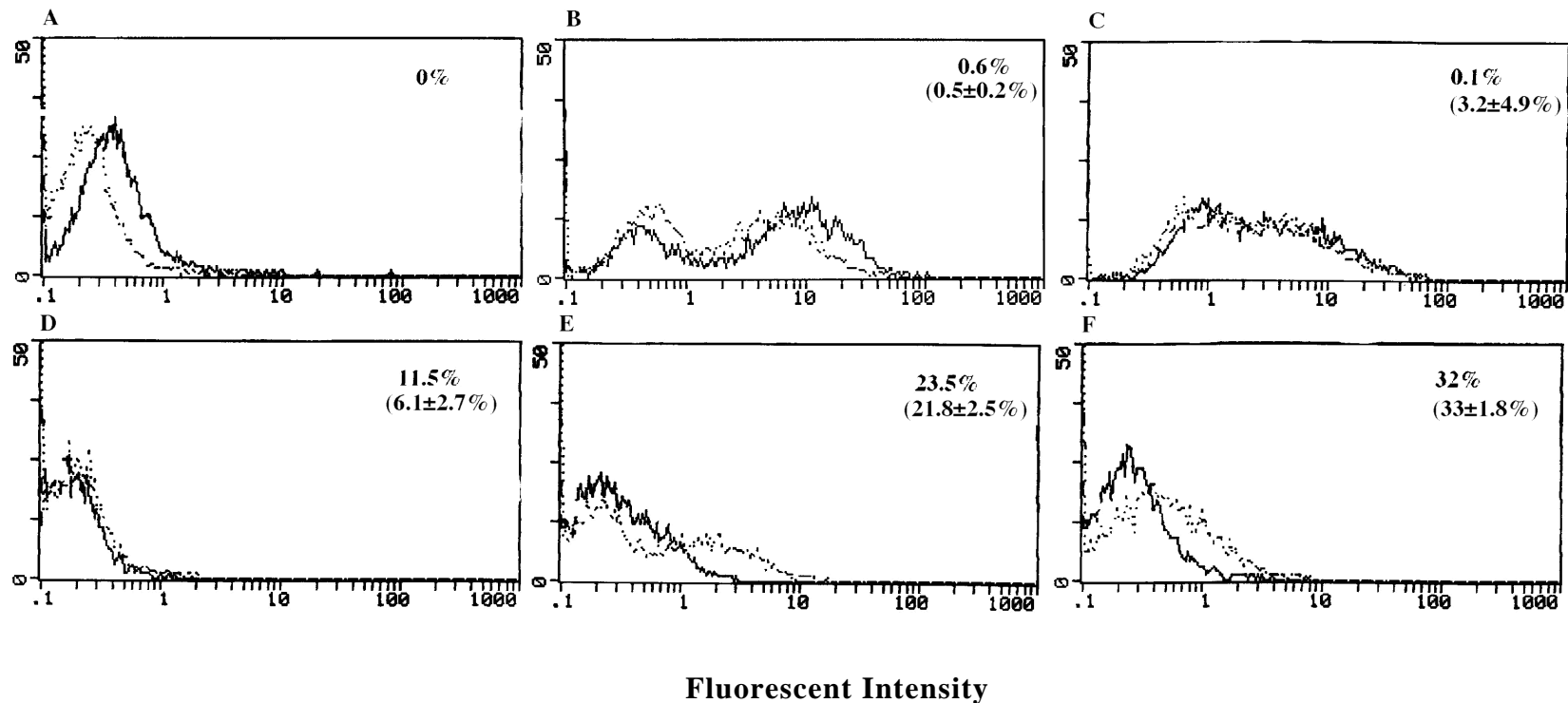


Figure 18. *Popliteal, but not axillary, LN cells harvested 7 days after TCDD-treatment exhibit increased apoptosis when cultured *in vitro*.* One week after vehicle/TCDD treatment and immunizations with anti-CD3 mAbs, axillary (A, B, C) and popliteal (D, E, F) lymph node cells were removed. Cells were stained immediately (fresh) (A, D), or cultured for 24 hours with medium alone (B, E) or in the presence of anti-CD3 mAbs (C, F). Results for the oil-treated control are shown as bold histograms; results for the TCDD-treated cells are shown as dotted histograms. Apoptosis is indicated as a positive shift in fluorescence (curve shift towards the right) on the diagram. The percentages of increased apoptosis in the TCDD-treated cells are depicted in the upper right-hand corner of each histogram. The mean \pm SD of four experiments is shown in parentheses. The y-axis shows the number of cells, while the x-axis represents the intensity of fluorescence, expressed on a logarithmic scale.

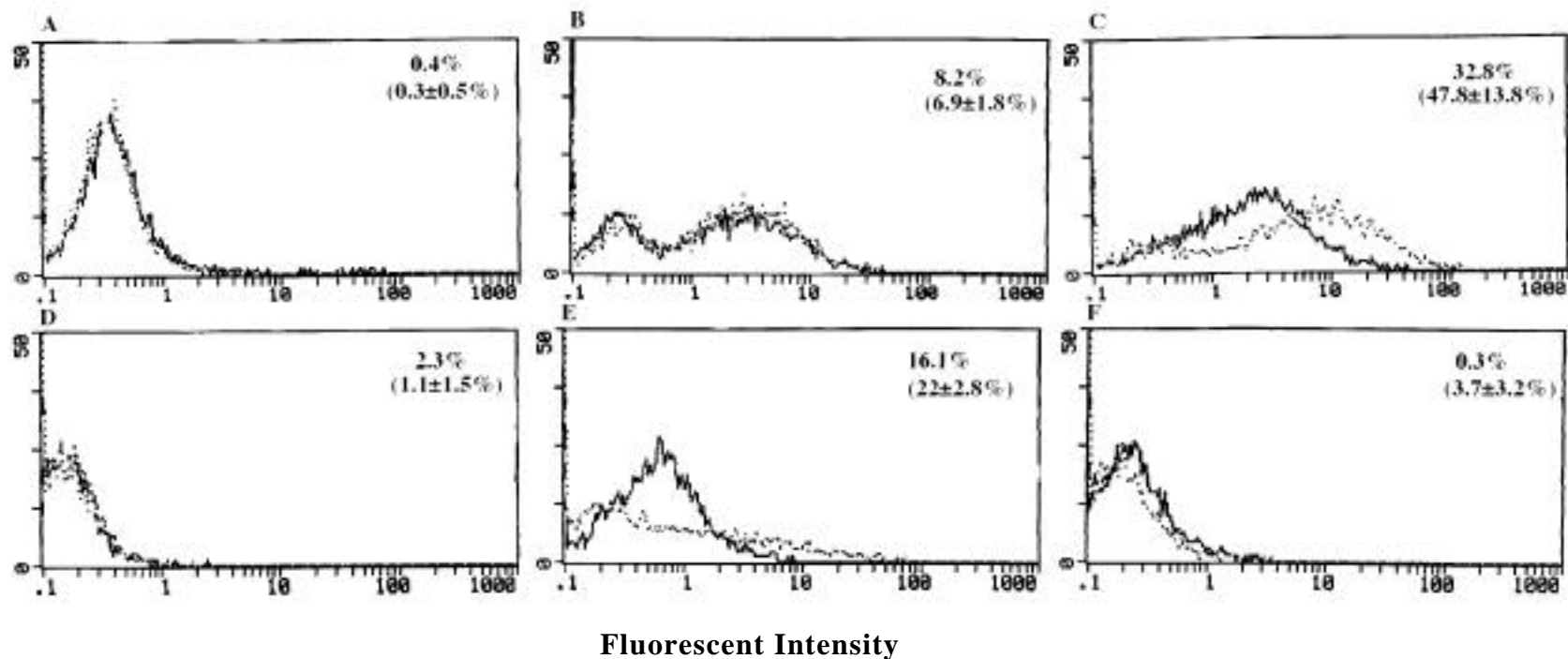


Figure 19. Apoptosis in axillary and popliteal LN cells on day 14 after vehicle/TCDD treatment and footpad immunizations with anti-CD3 mAbs. Two weeks after vehicle/TCDD treatment and immunizations with anti-CD3 mAbs, axillary (A, B, C) and popliteal (D, E, F) lymph node cells were removed. Cells were stained immediately (fresh) (A, D), or cultured for 24 hours with medium alone (B, E) or in the presence of anti-CD3 mAbs (C, F). Results for the oil-treated control are shown as bold histograms; results for the TCDD-treated cells are shown as dotted histograms. Apoptosis is indicated as a positive shift in fluorescence (curve shift towards the right) on the diagram. The percentages of increased apoptosis in the TCDD-treated cells are depicted in the upper right-hand corner of each histogram. The mean ± SD of four experiments is shown in parentheses. The y-axis shows the number of cells, while the x-axis represents the intensity of fluorescence, expressed on a logarithmic scale.