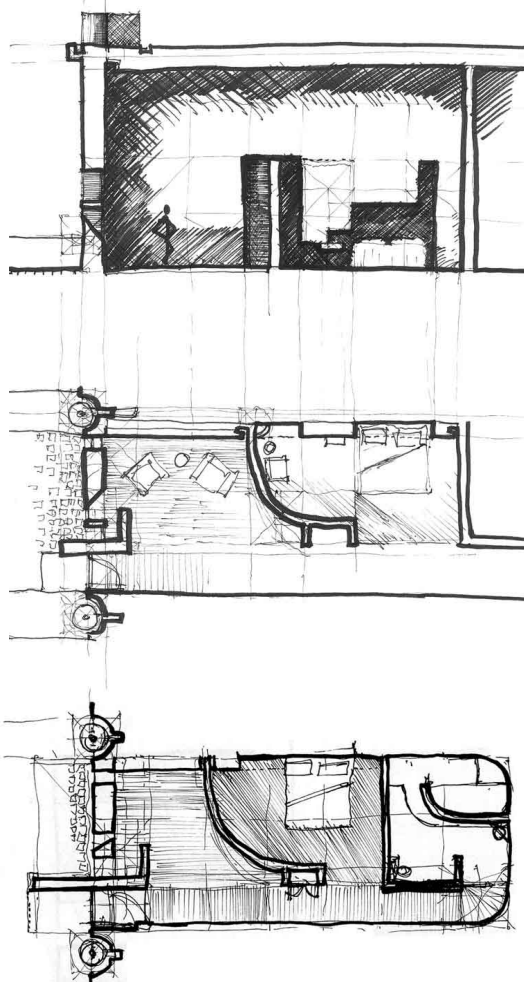
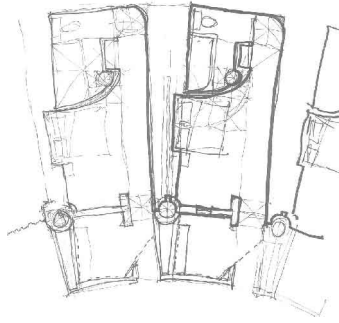


dwellings in the hill

"Carved" into the granite bedrock of the parabolic terraces are the cabins. These dwellings serve as accommodations for visitors who plan to stay at the complex for an extended period or for guests from extensive distances. They are like caves cut into the hillside. These places of rest must be more than "hotel rooms." They are linked to the pool, and they must reflect this. However, they cannot overshadow the nature of the pool--this is no resort for people to lounge comfortably in luxurious accommodations. It is a place of escape, not from life, work, or responsibilities, but from the sun.





The cabins evolved from simple box compartments to cave-like cloister cells with forms and geometry more relative to the entire complex and the cone. Curved walls and irregular voids within the walls conduct the experience.

