

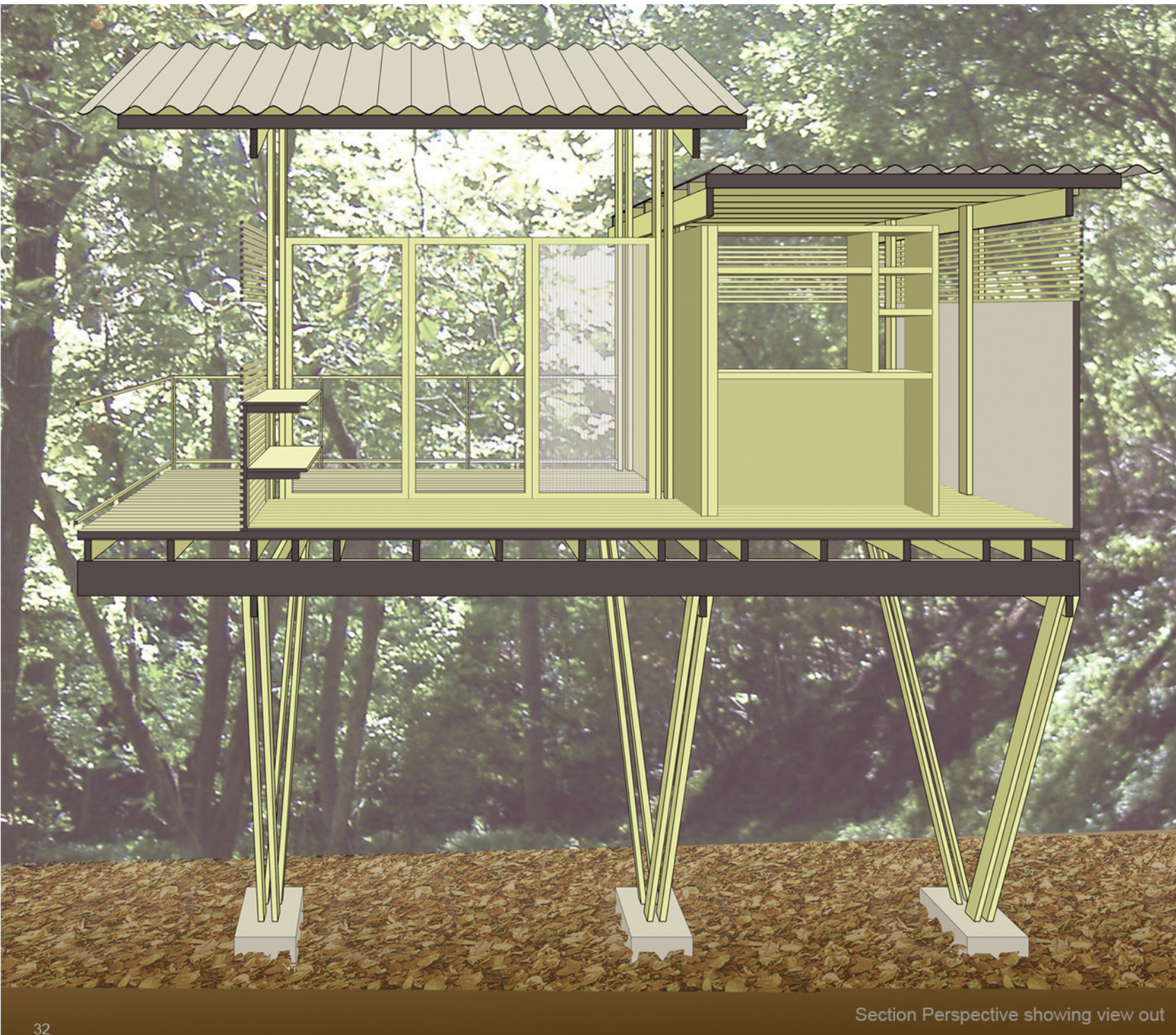


The shelters are designed with a specific controlled way for one to look at nature. Each shelter is oriented with its back to the others and its front to the trees. This gives a more private and intimate sense to the space.

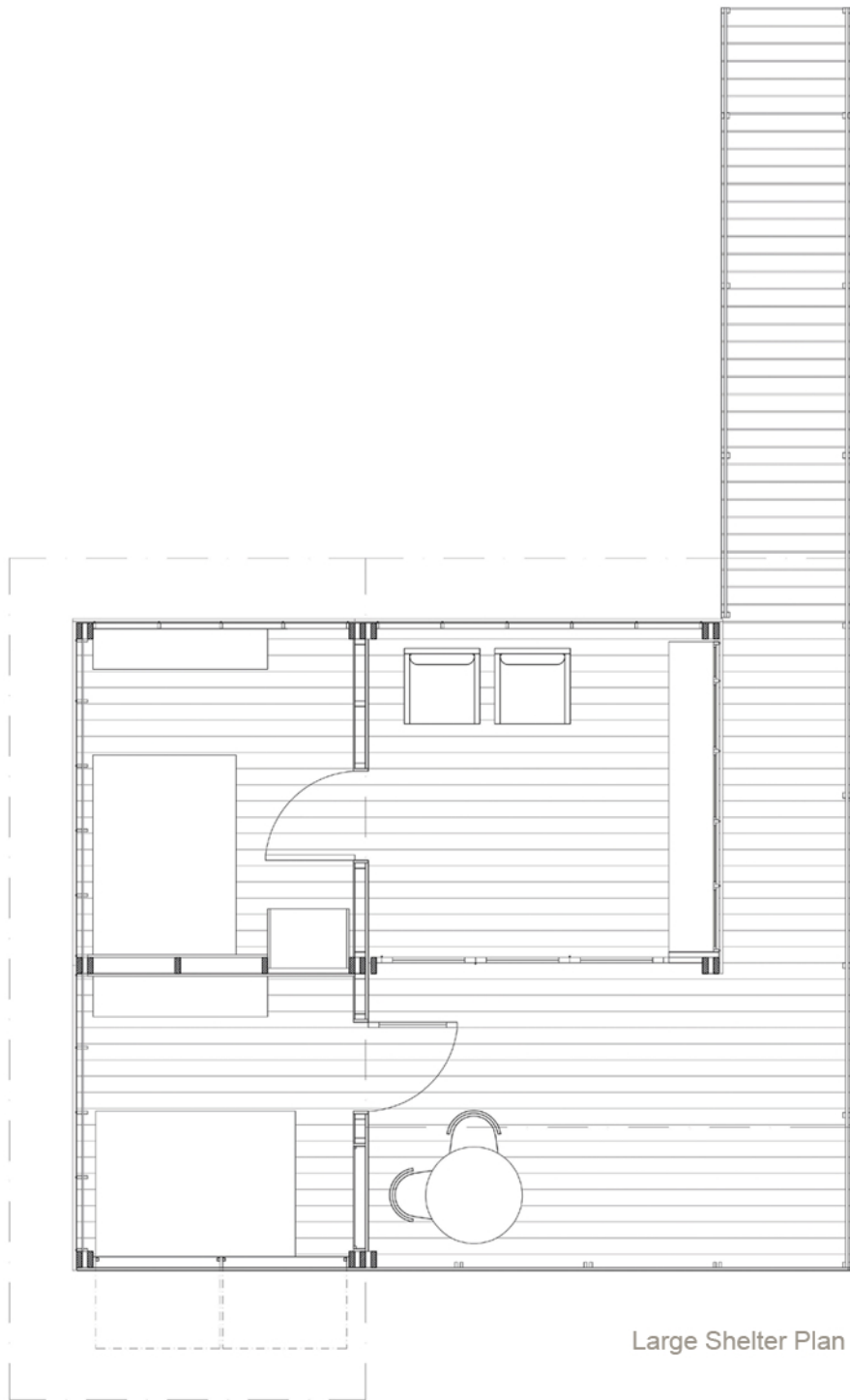
The wooden slats placed on the back side of the shelter screen the view inward to the other shelters. The horizontal emphasis of the slats complement the verticality of the trees.

Each shelter steps out the width of the porch so that this axial view forward is clear and maintained.

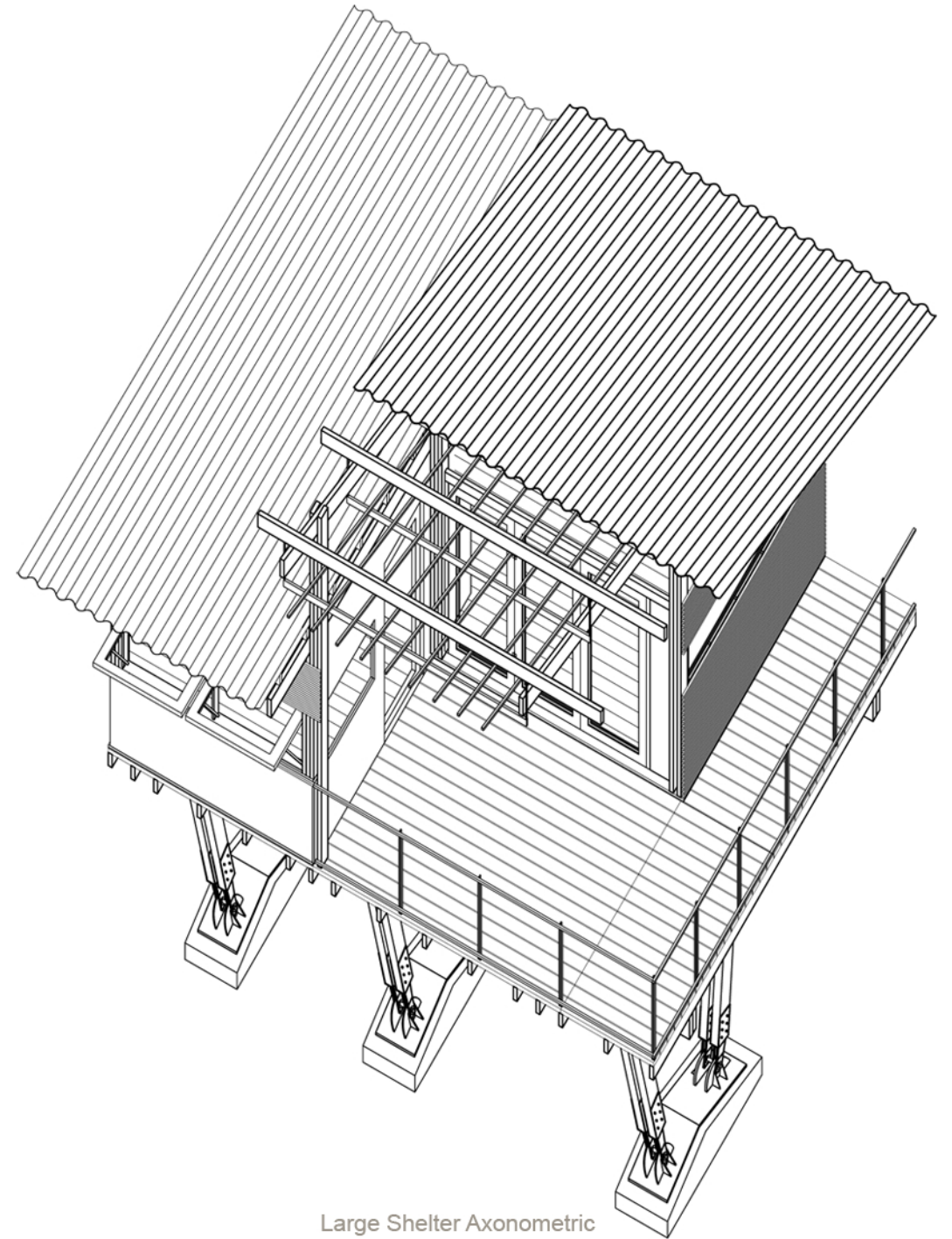
The shelters can be fully opened to nature by leaving the trifolding doors and hinging windows open, or if one wants more enclosure from the elements, they can be closed and the shelter is then fully screened.



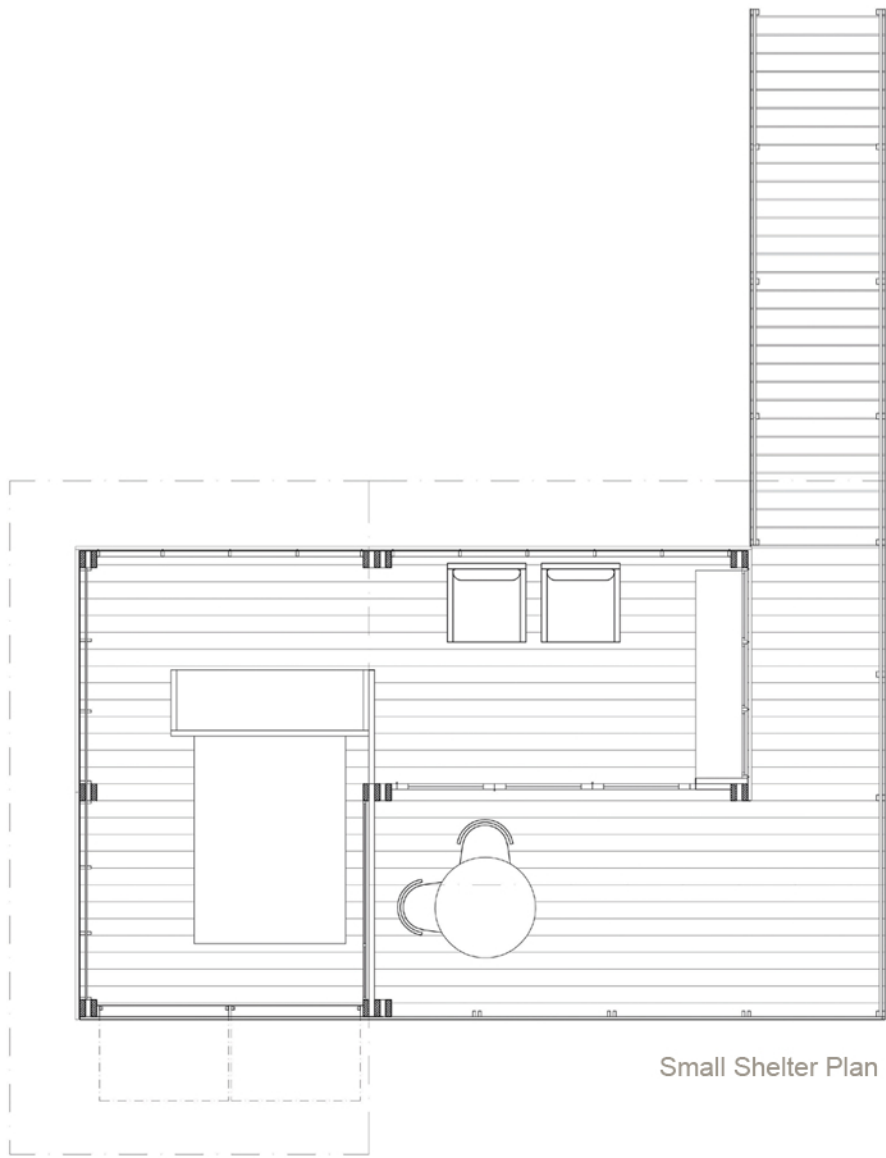
The view outward to the trees has a is enhanced by a trifolding door that completely opens up the space and a hinging window that opens in the bedroom. These elements open up toward the trees and away from the other shelters. The roof also emphasizes this outward view through the corrugation lines directing outward and the roof opening up in elevation toward the trees. The porch is located on this side of the shelter that faces the trees. The height of the shelters locates them in line with the tree canopy.



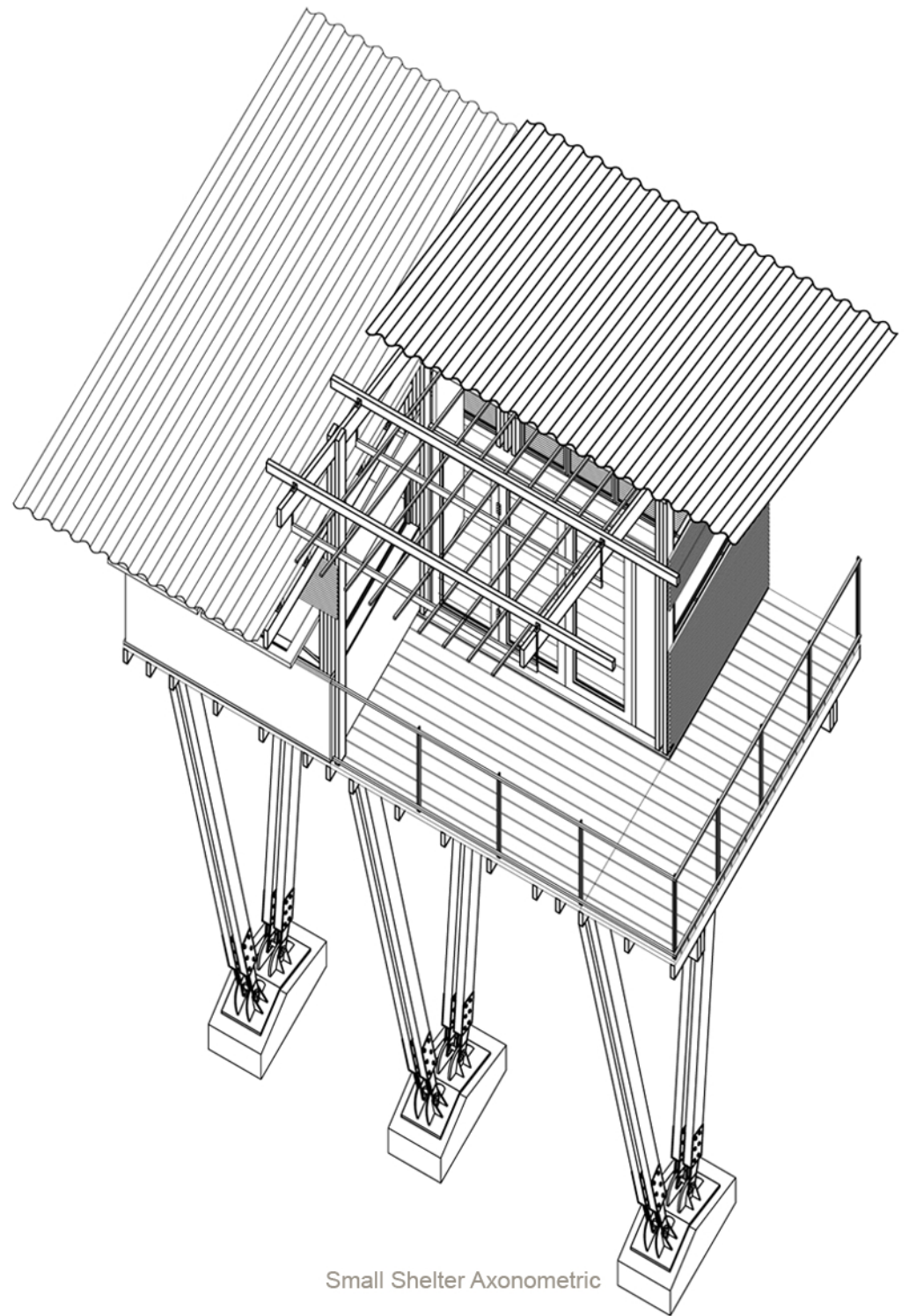
Large Shelter Plan



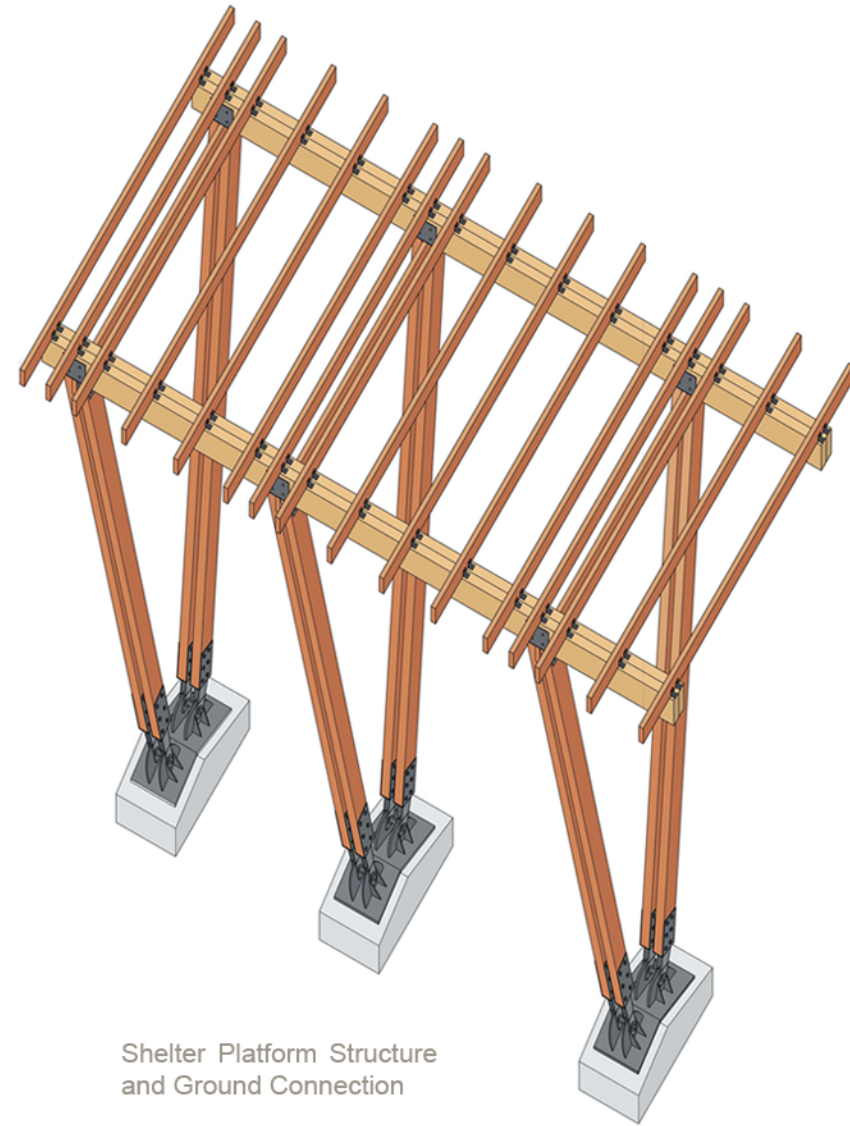
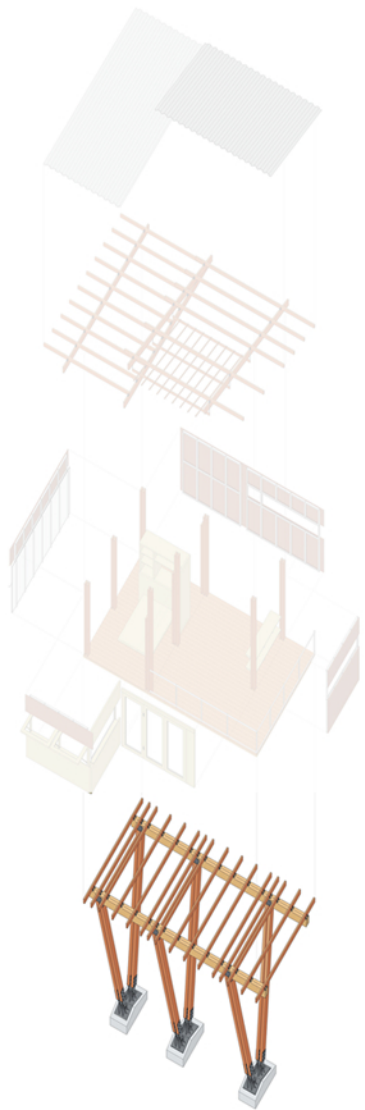
Large Shelter Axonometric



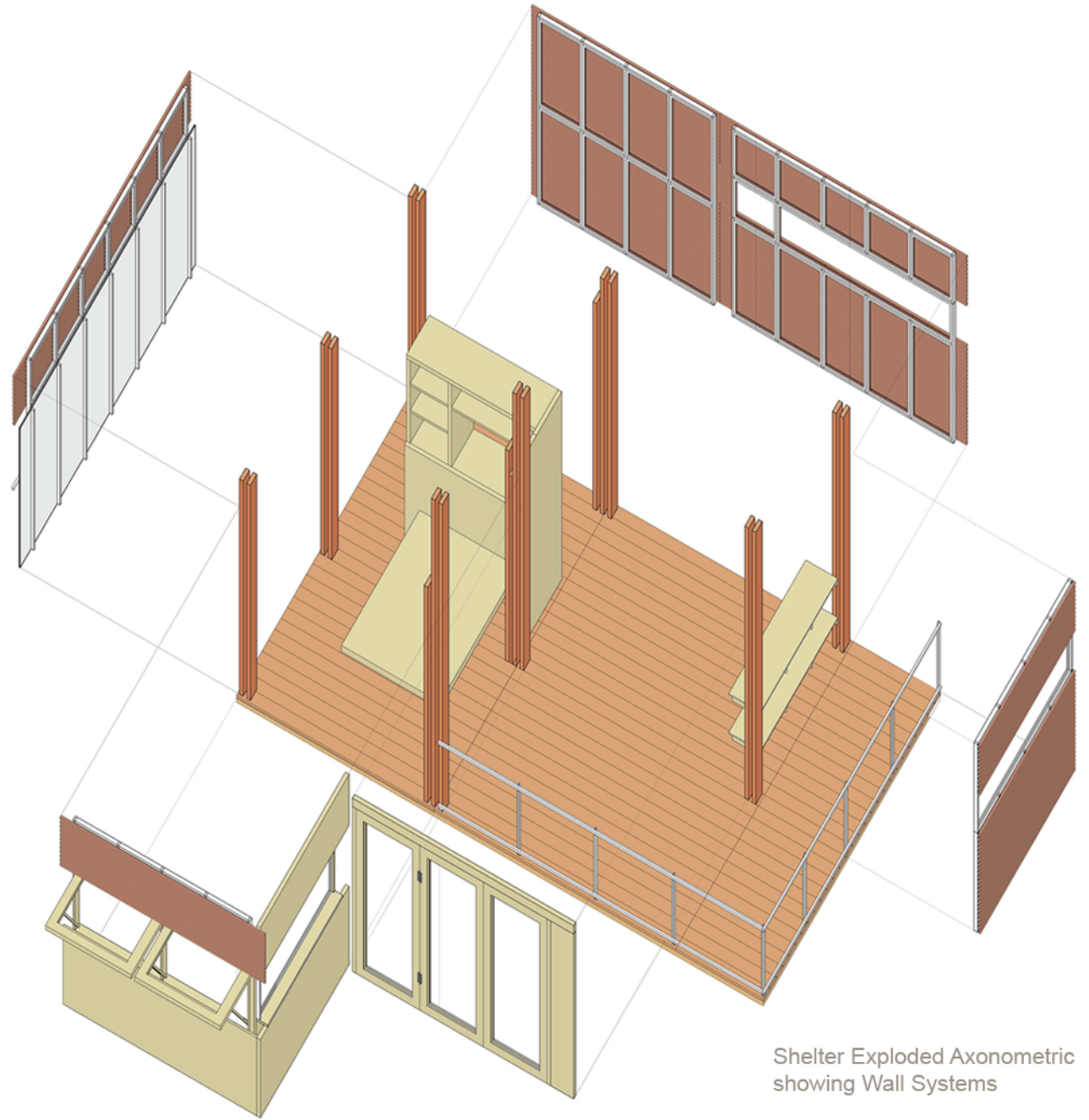
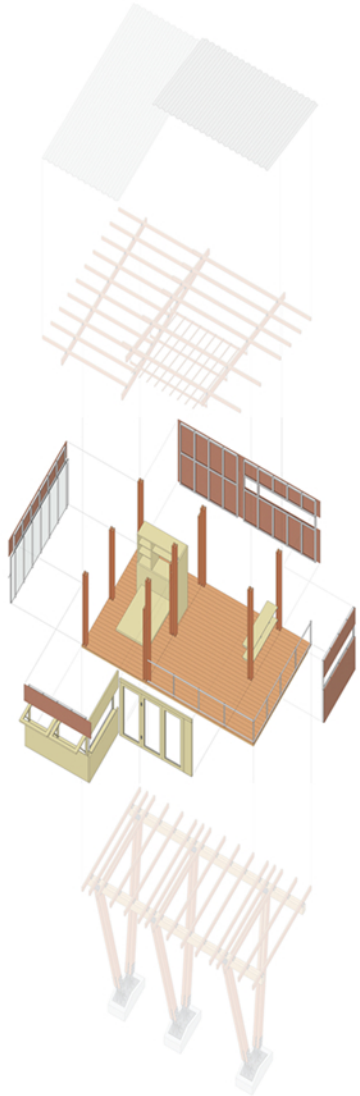
Small Shelter Plan



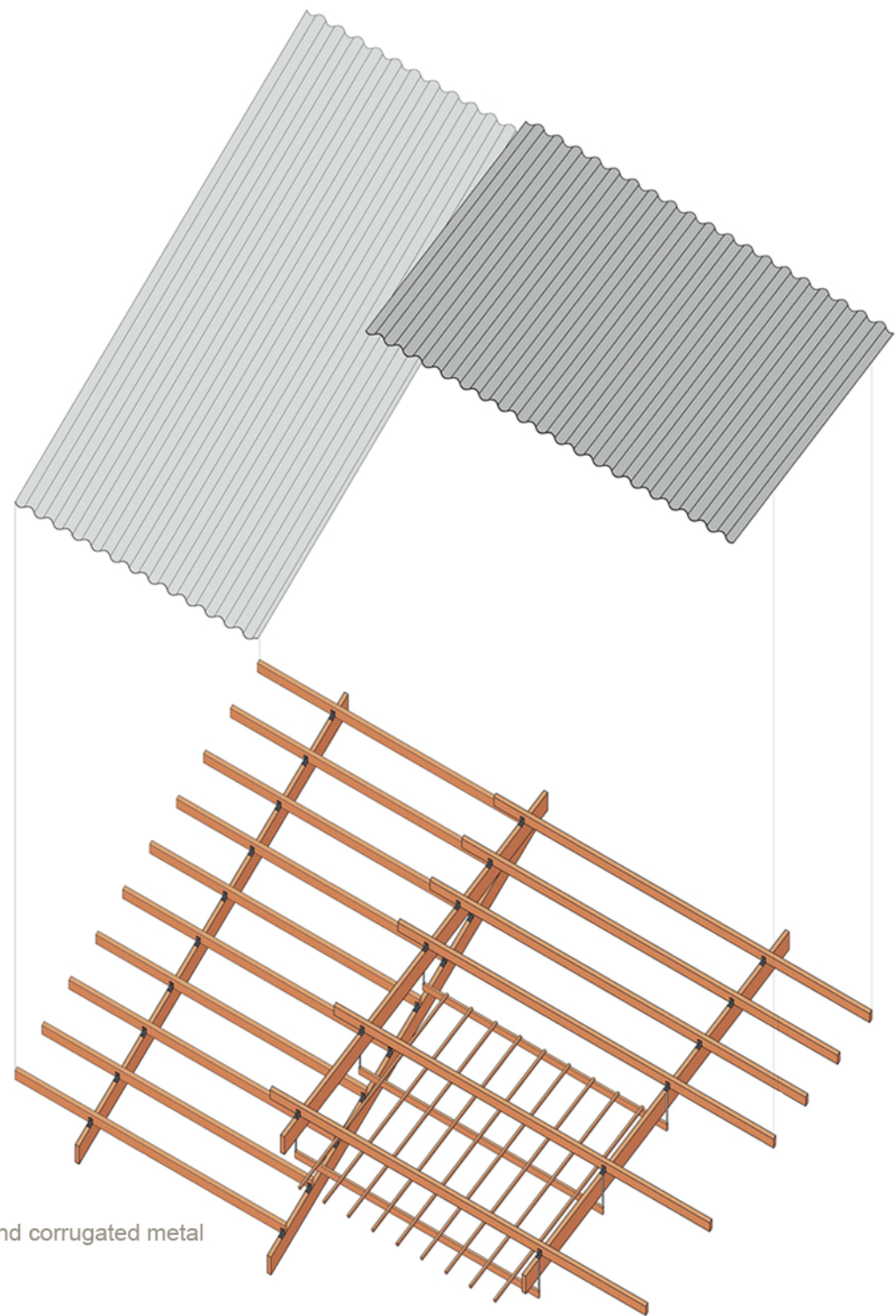
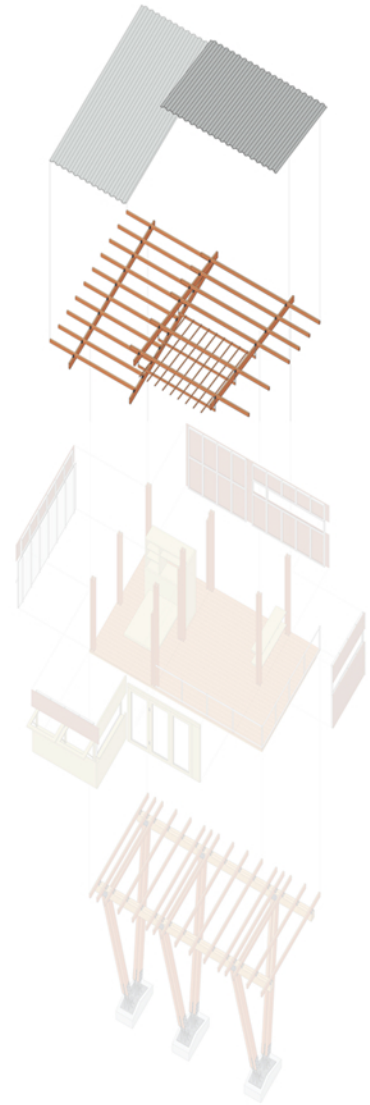
Small Shelter Axonometric



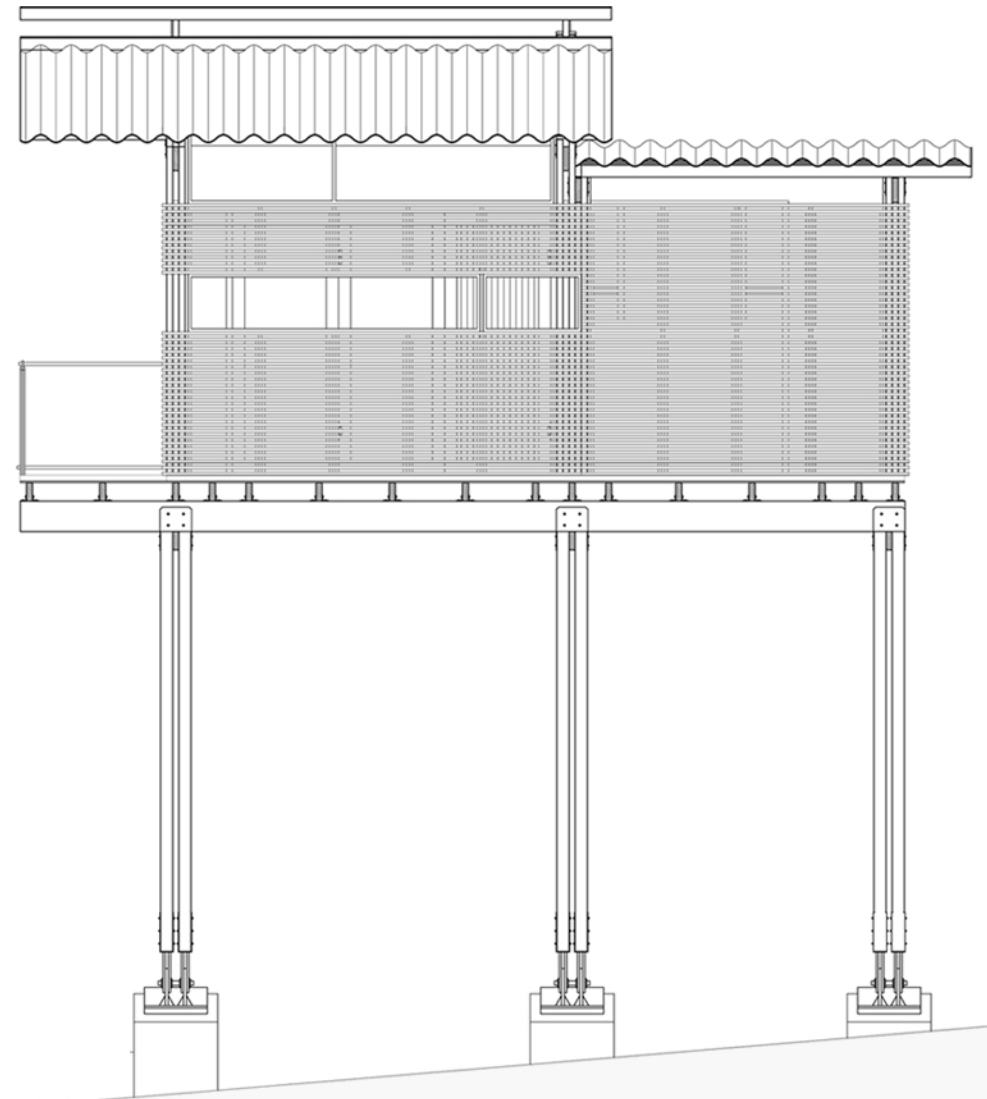
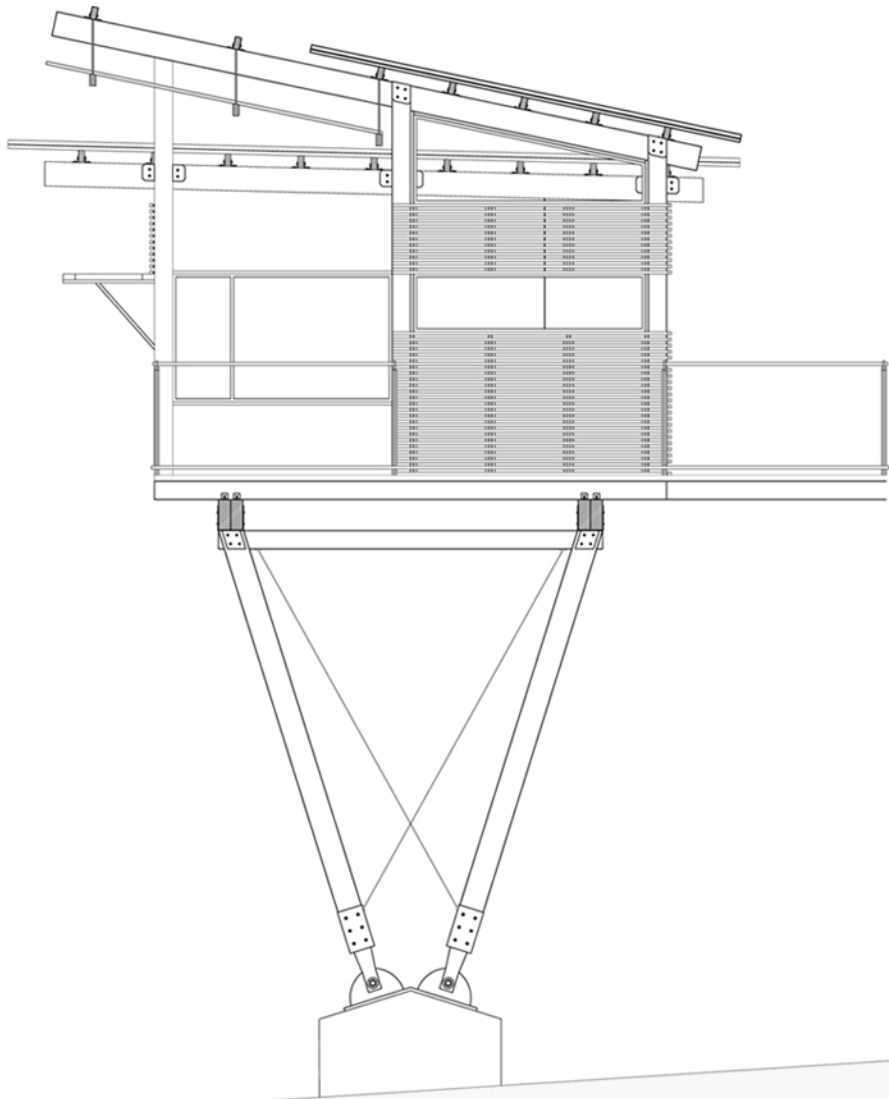
Shelter Platform Structure
and Ground Connection



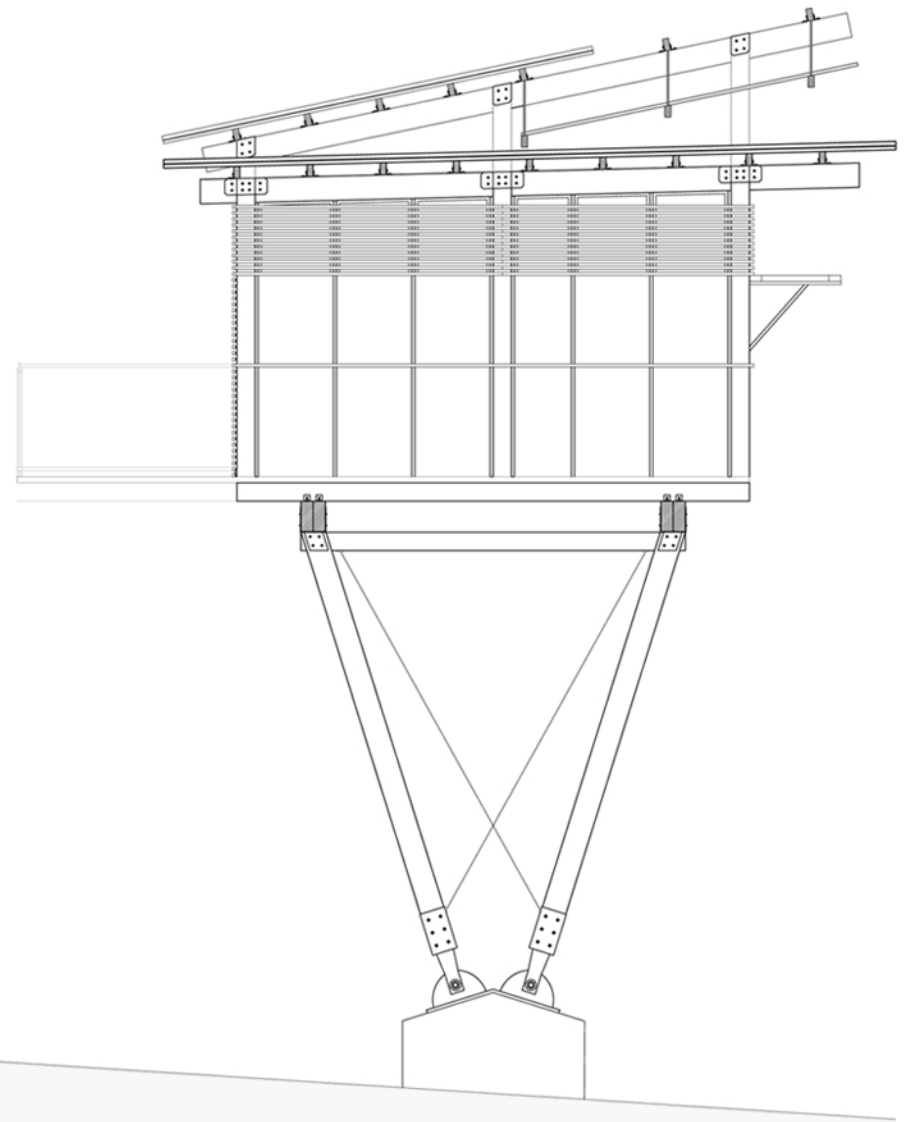
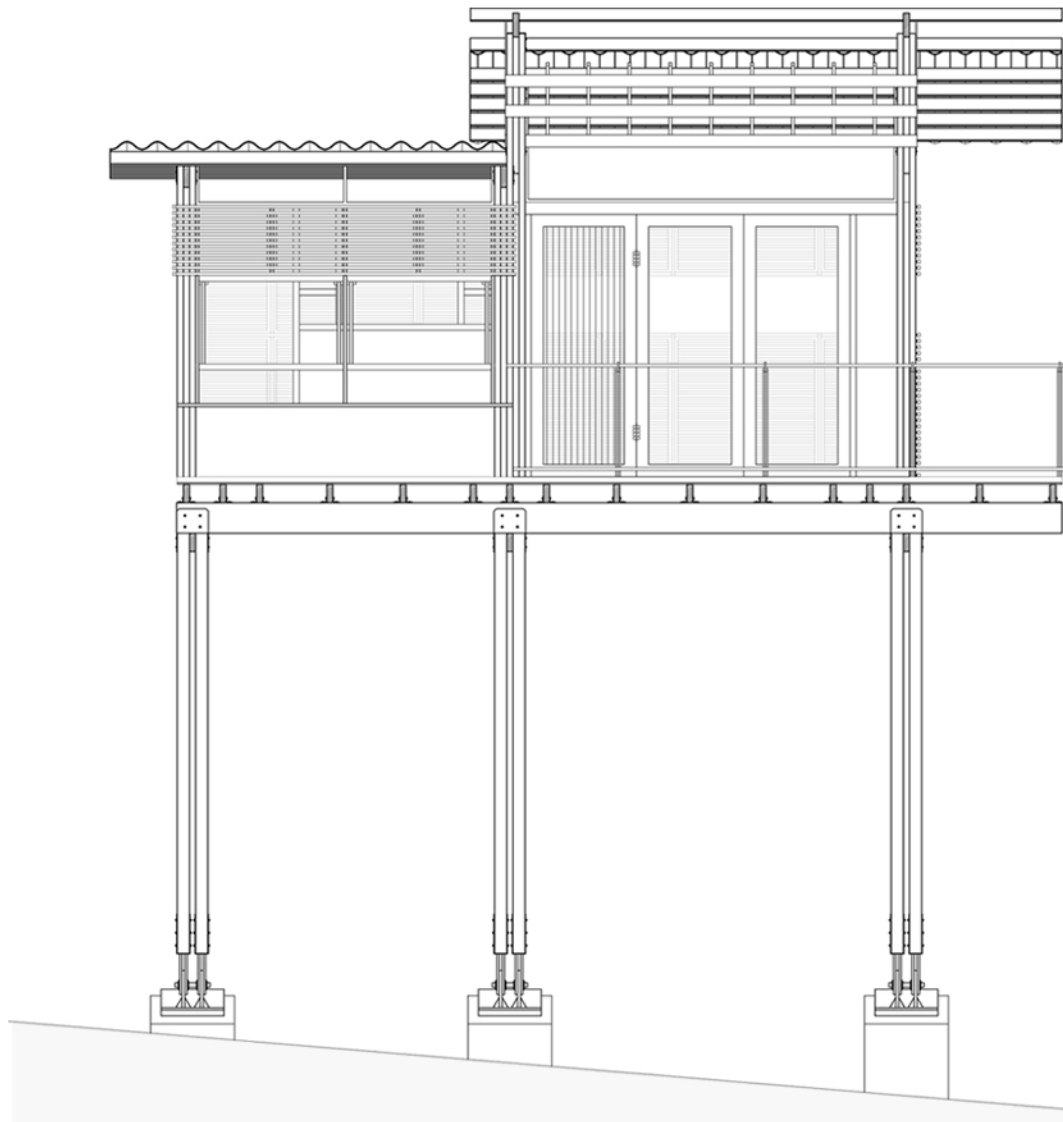
Shelter Exploded Axonometric
showing Wall Systems

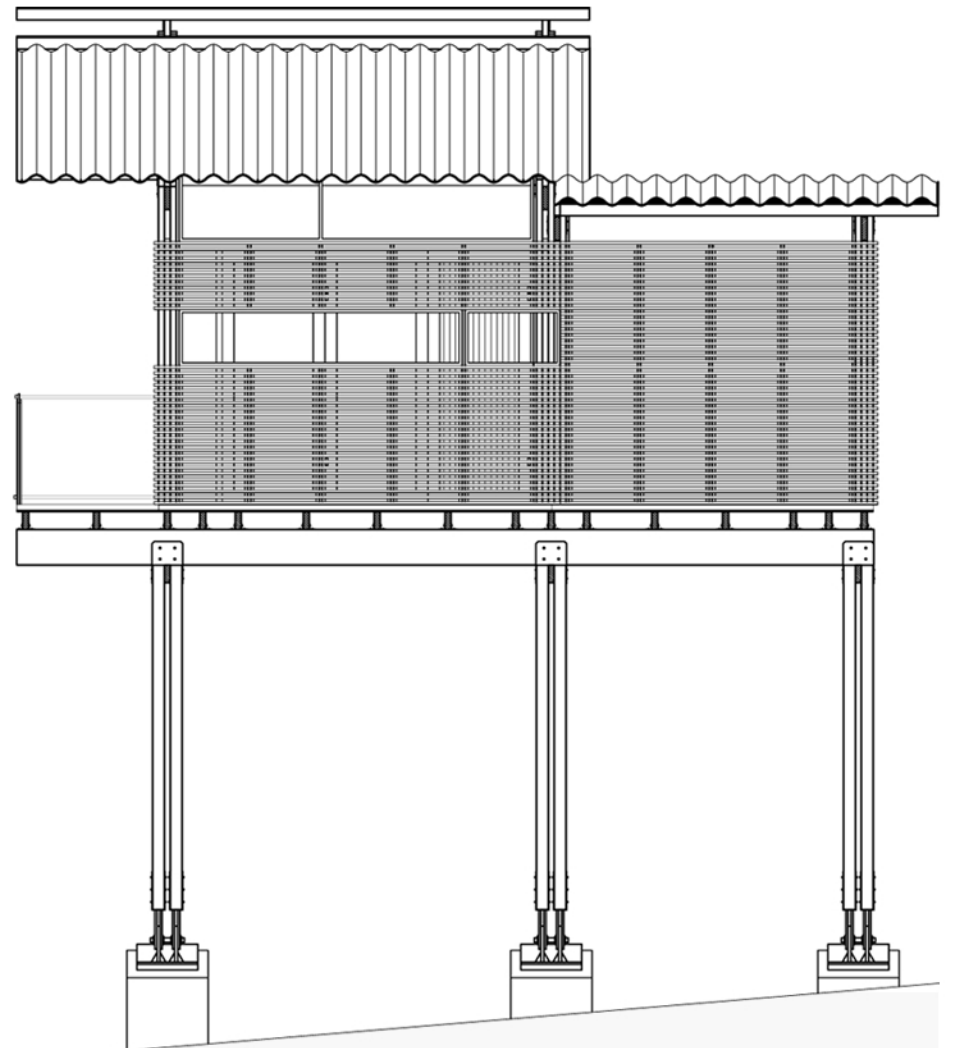
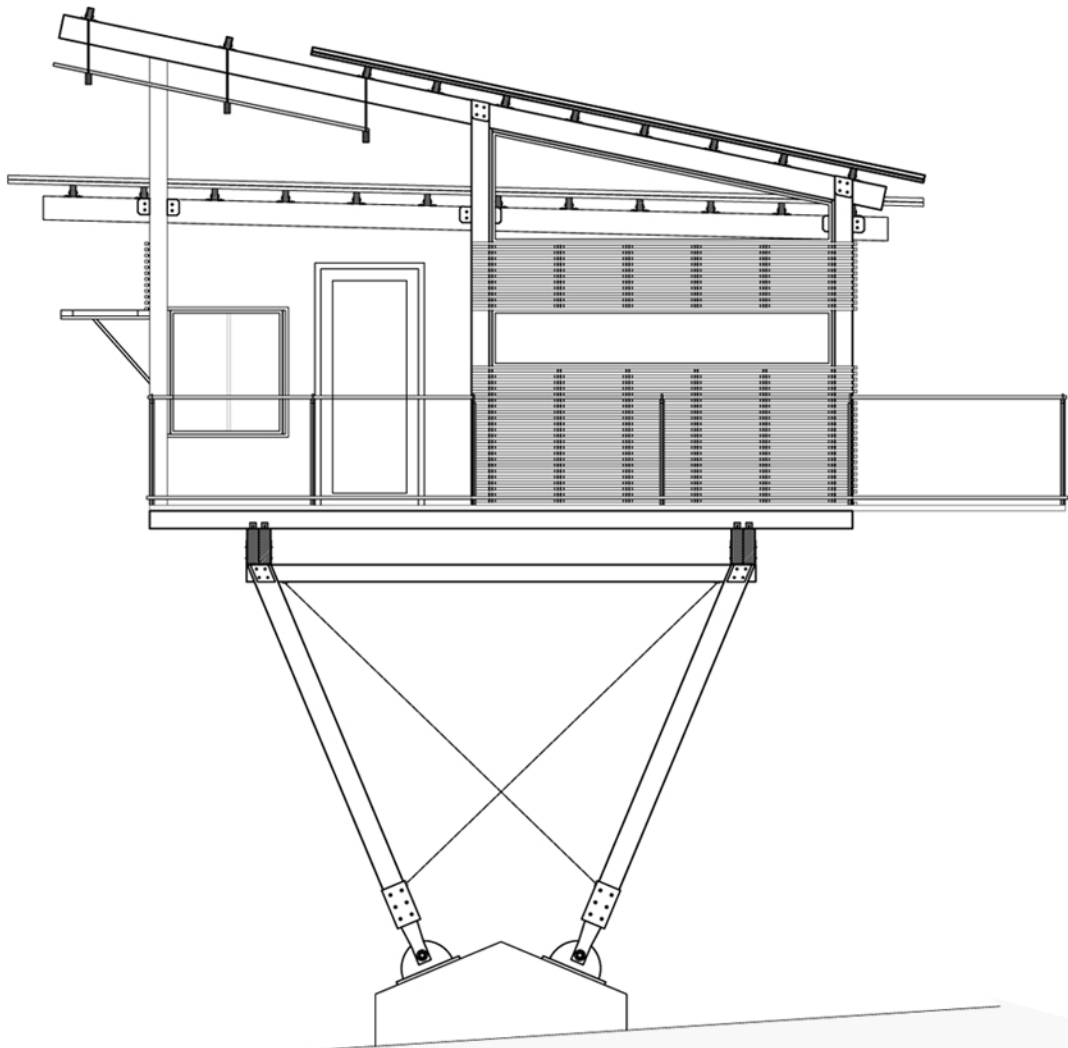


Roof structure and corrugated metal

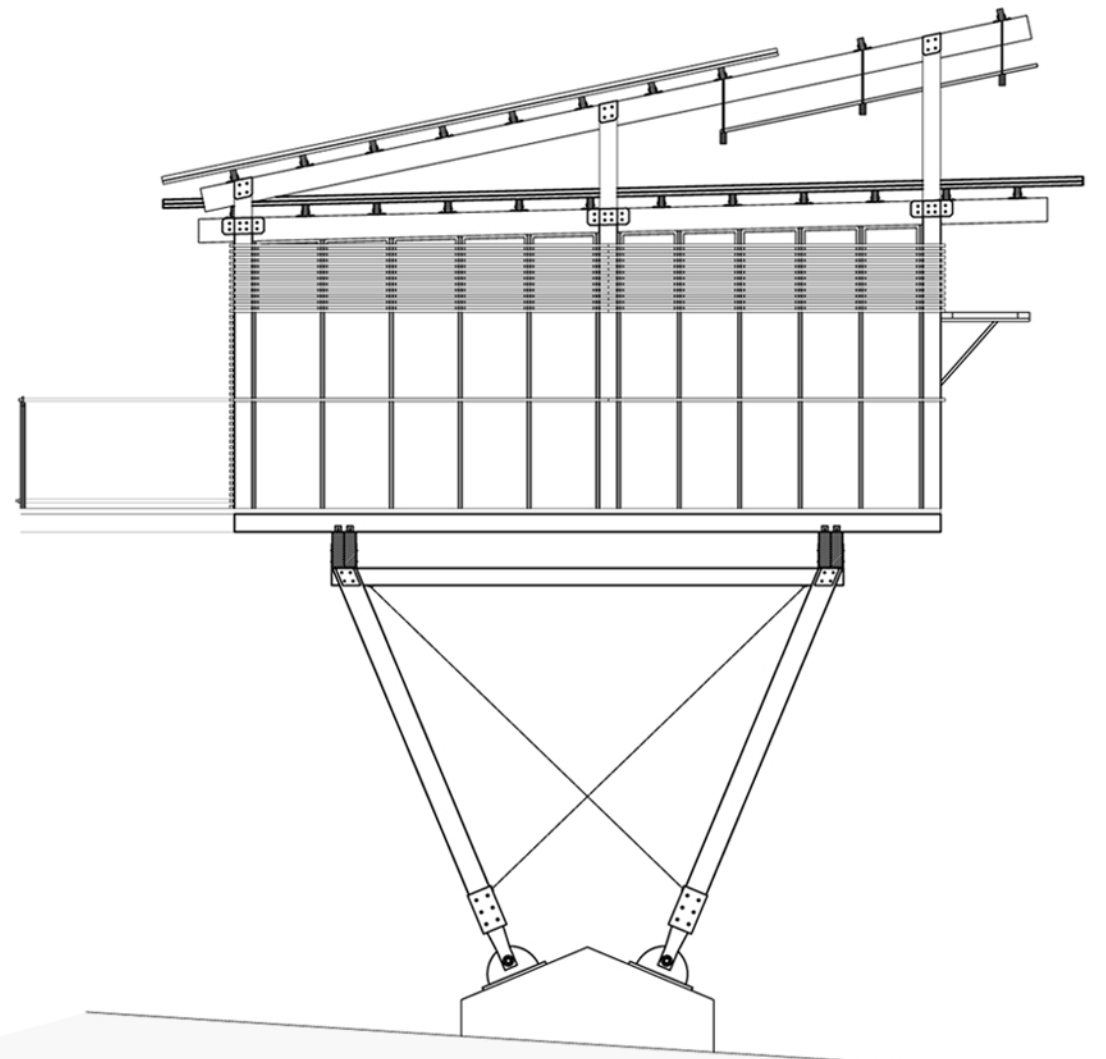
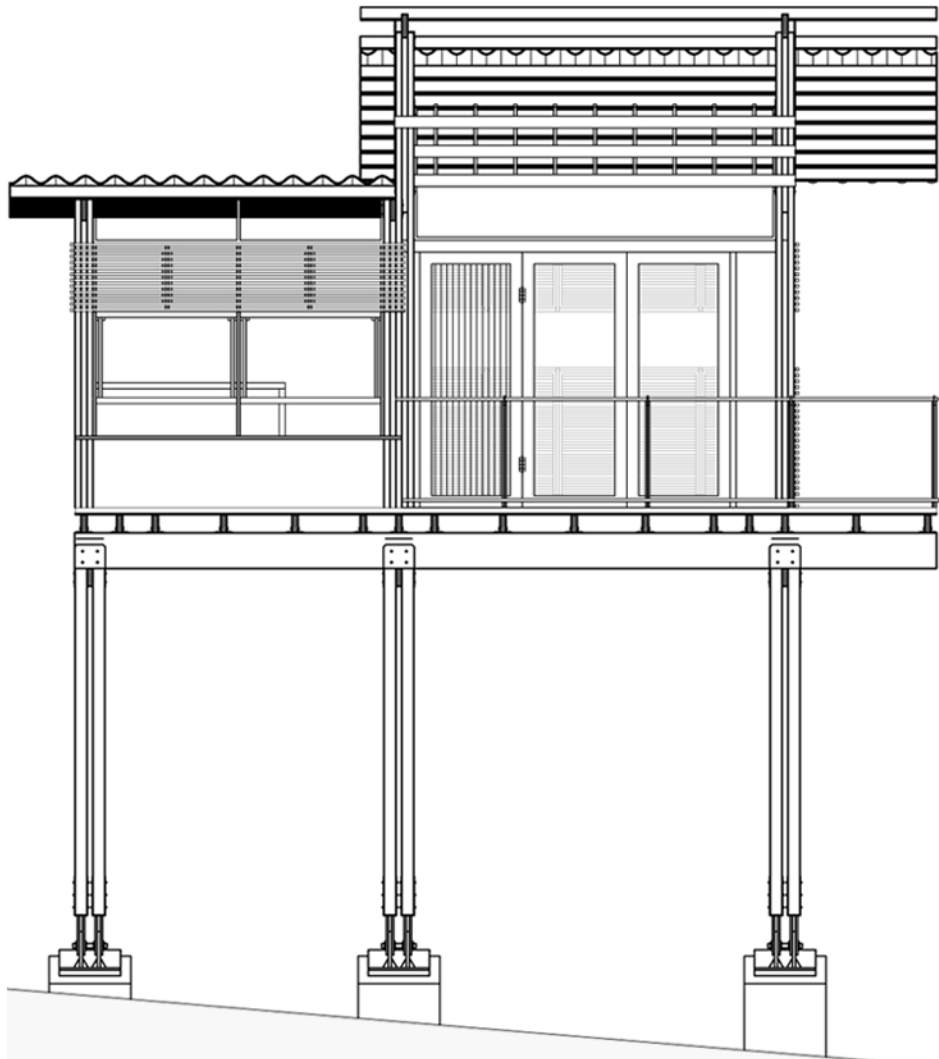


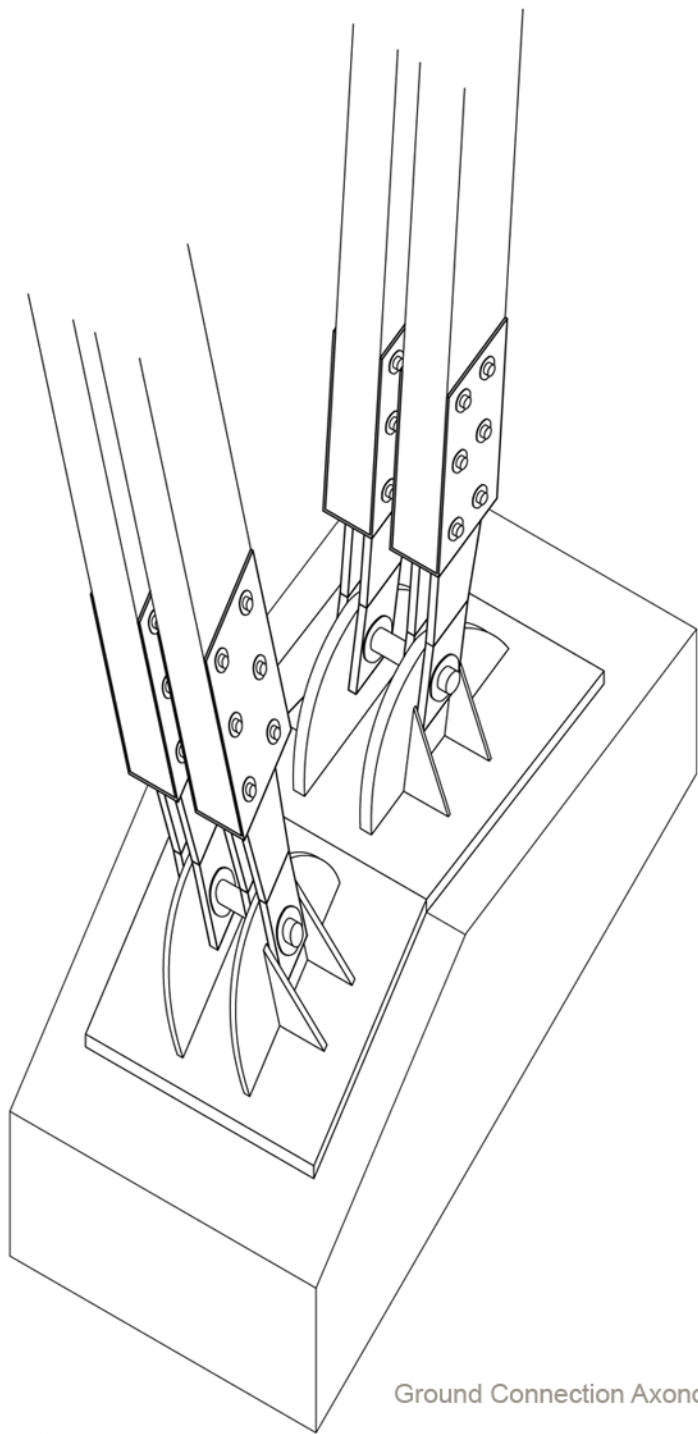
Small Shelter Elevations



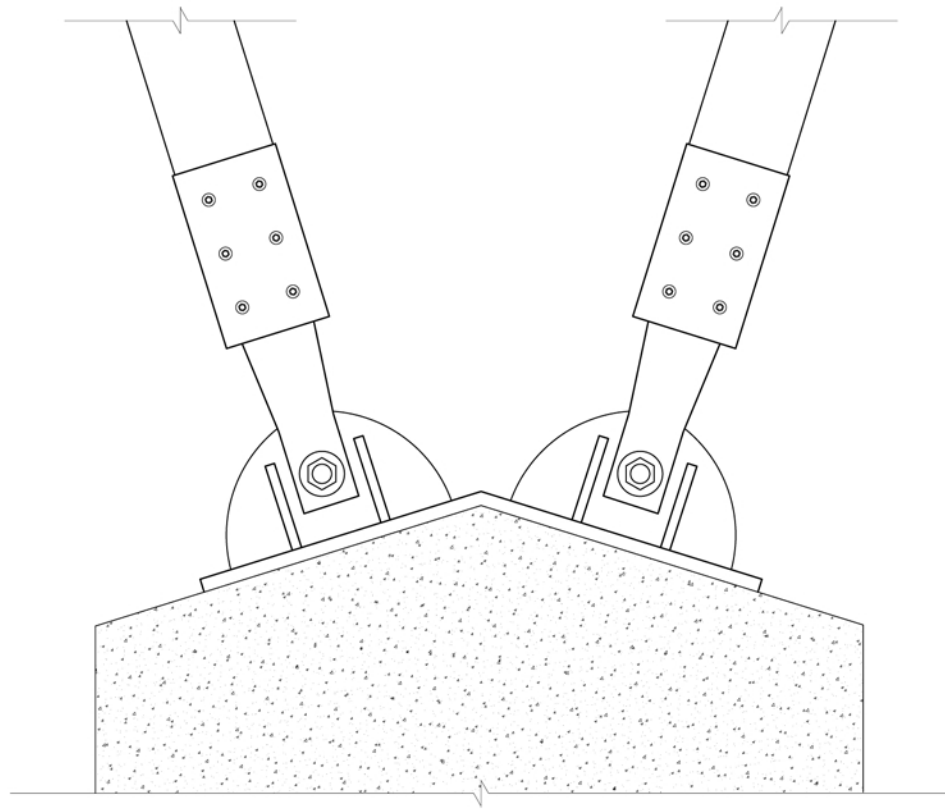


Large Shelter Elevations

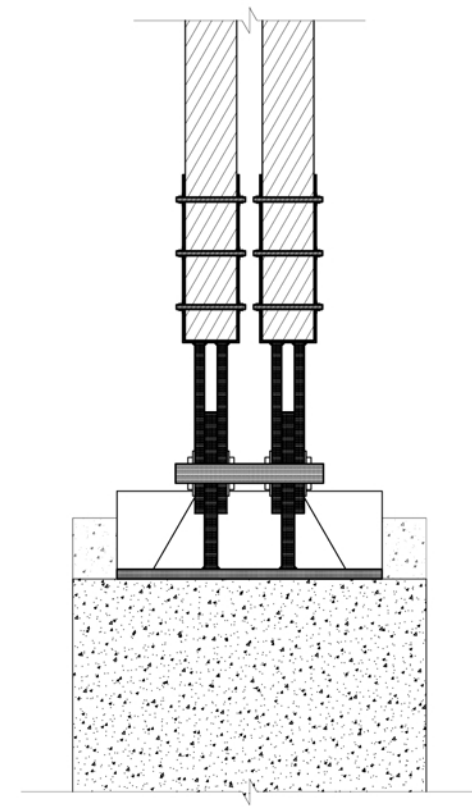




Ground Connection Axonometric



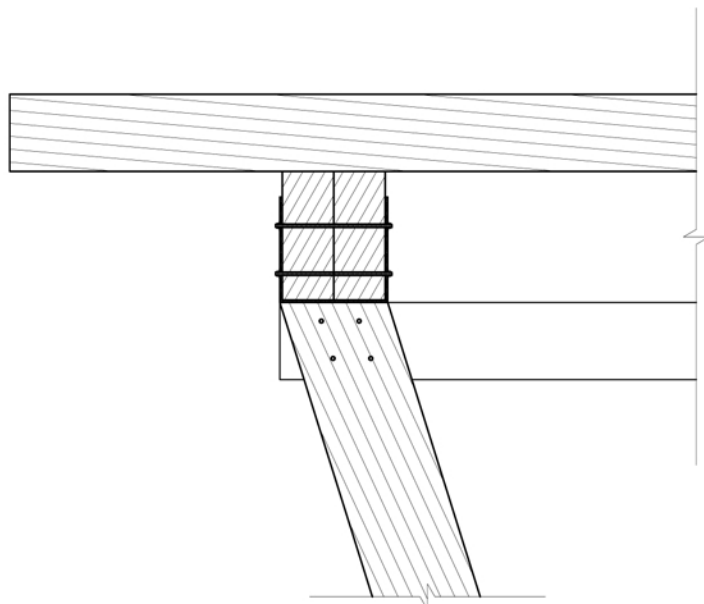
Ground Connection Elevation



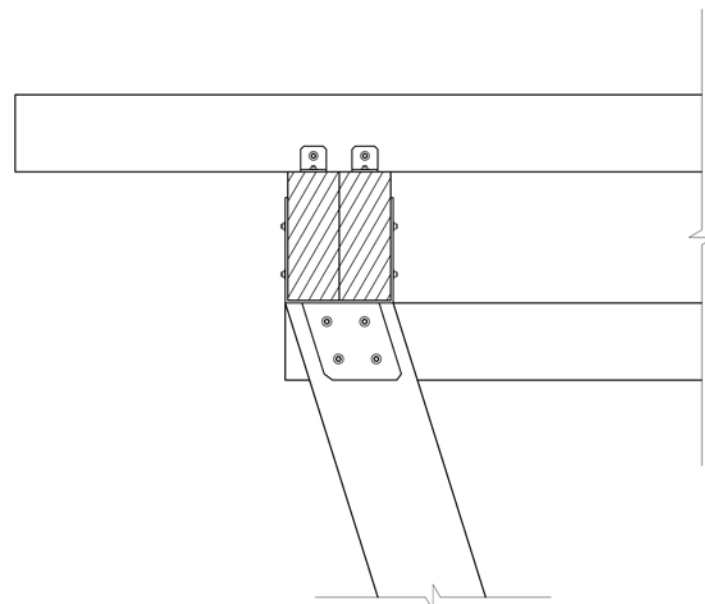
Ground Connection Section

How the shelters touch the ground and the sky play a critical role in the relationship between land and building. The shelters seem to organically grow from the ground to the platform. The concrete footing supports the steel pin connection, which holds the wood columns in place, which support the platform.

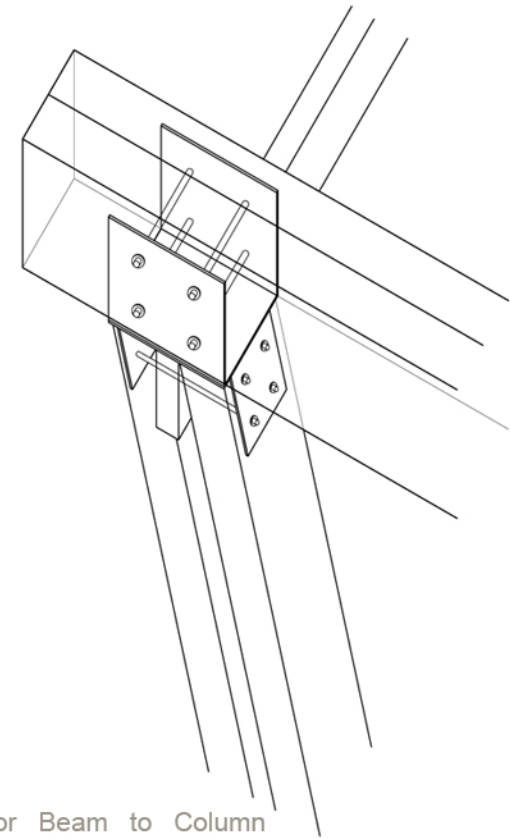
When wood connects with wood, or any other material, steel plates that have been treated with bluing acid to darken the color are used to heighten the awareness of the material and the joint.



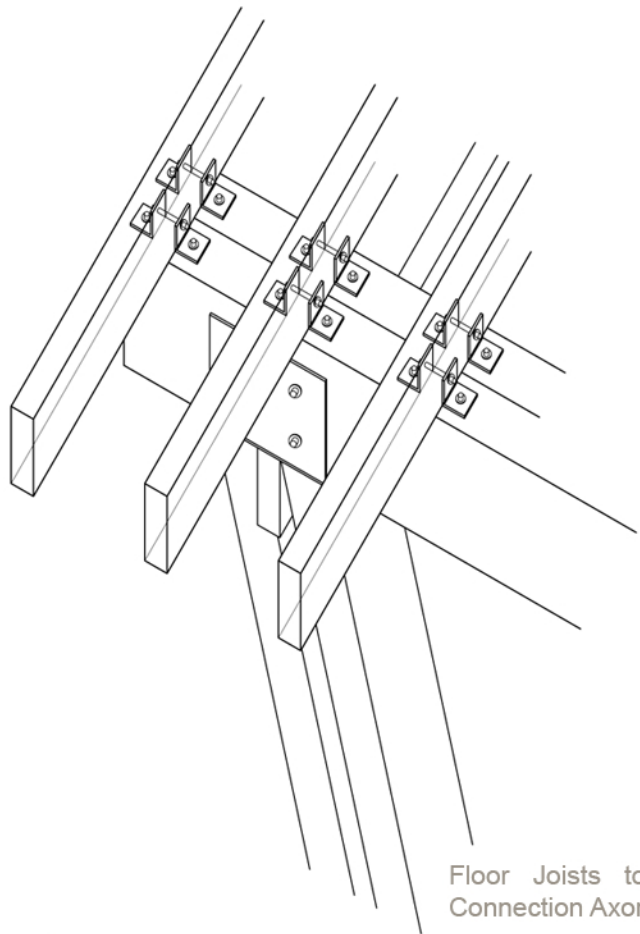
Floor Beam to Column
Connection Section



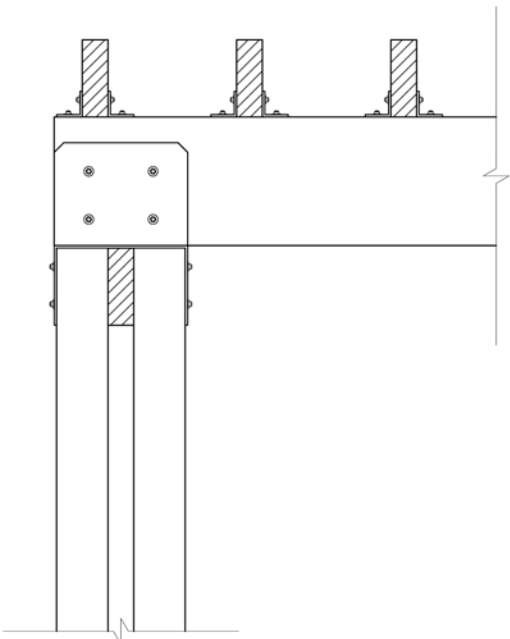
Floor Beam to Column
Connection Elevation



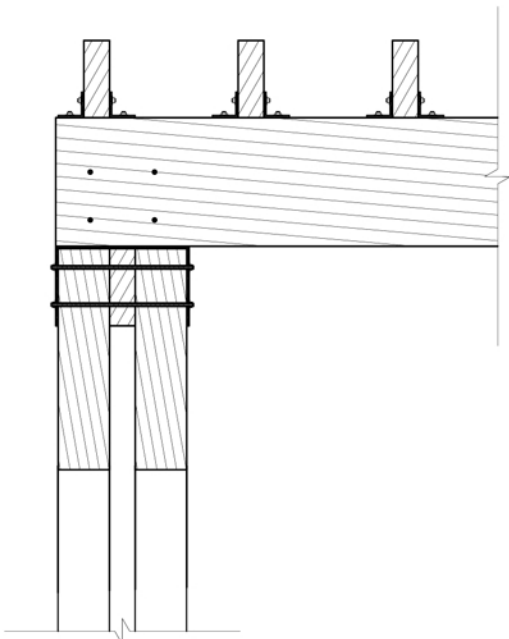
Floor Beam to Column
Connection Axonometric



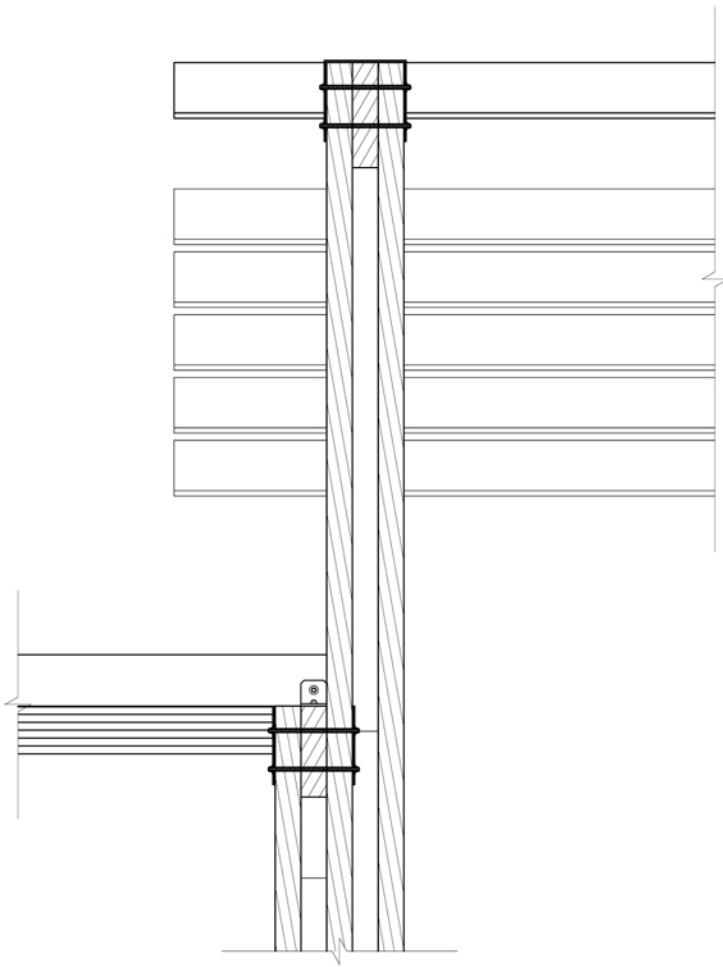
Floor Joists to Beam
Connection Axonometric



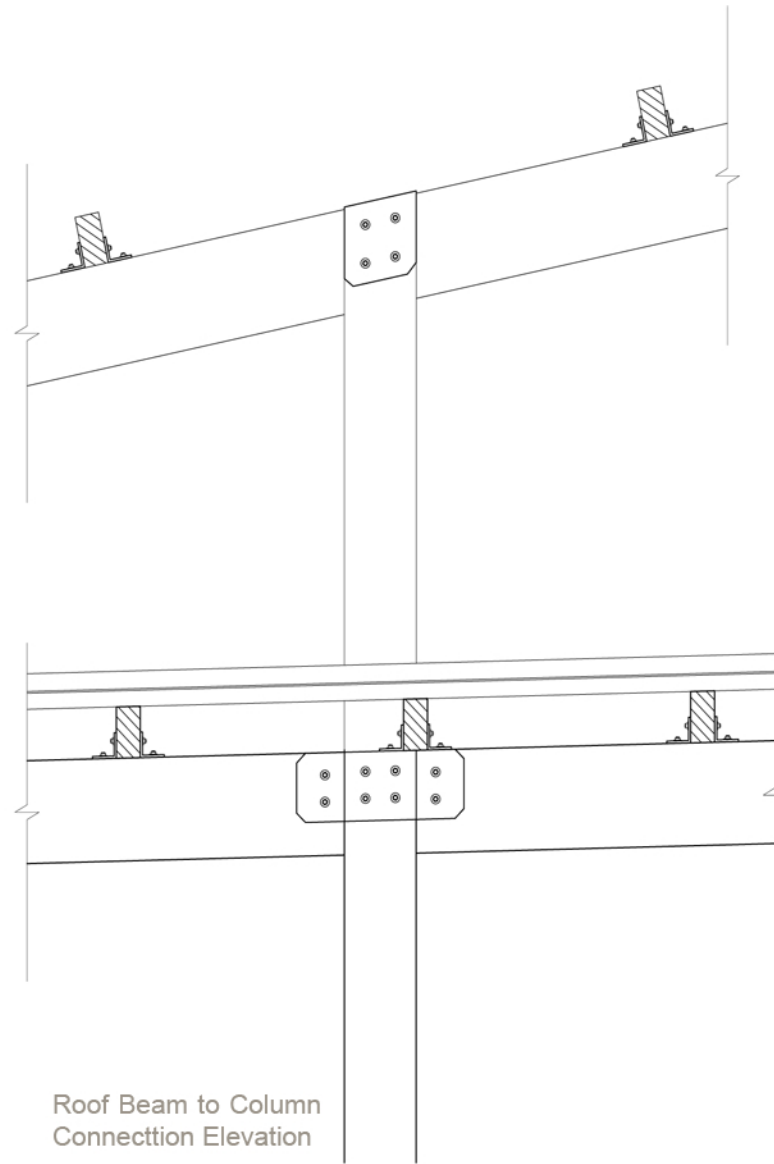
Floor Joists to Beam Connection Elevation



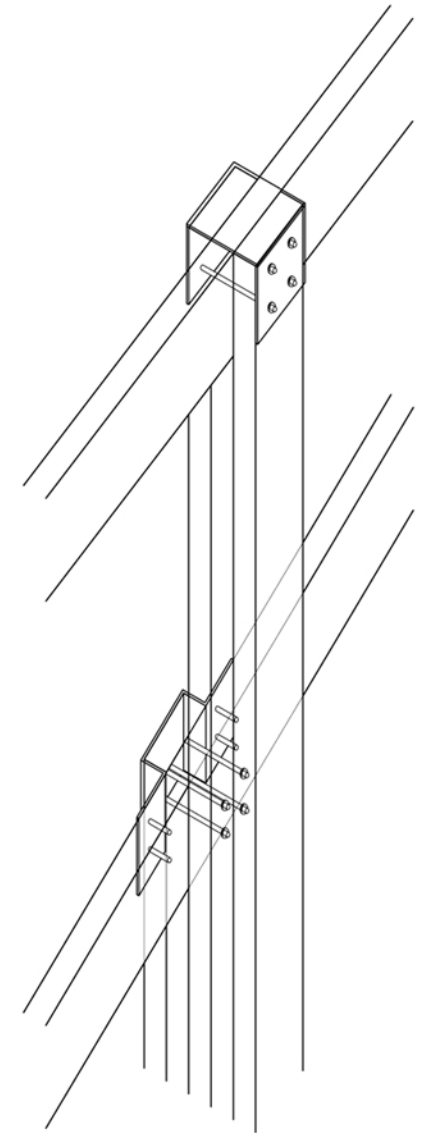
Floor Joists to Beam Connection Section



Roof Beam to Column
Connection Section

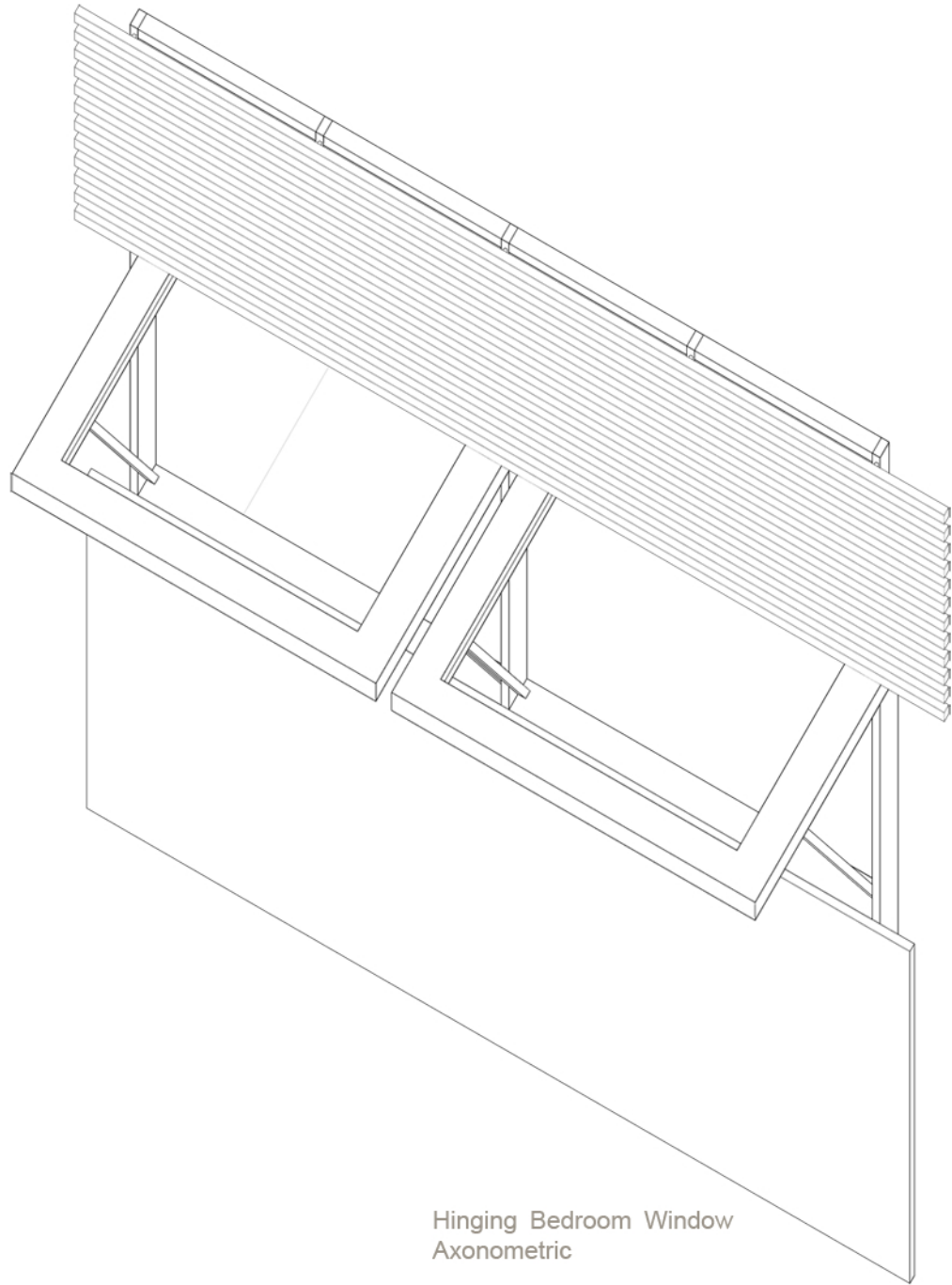


Roof Beam to Column
Connection Elevation



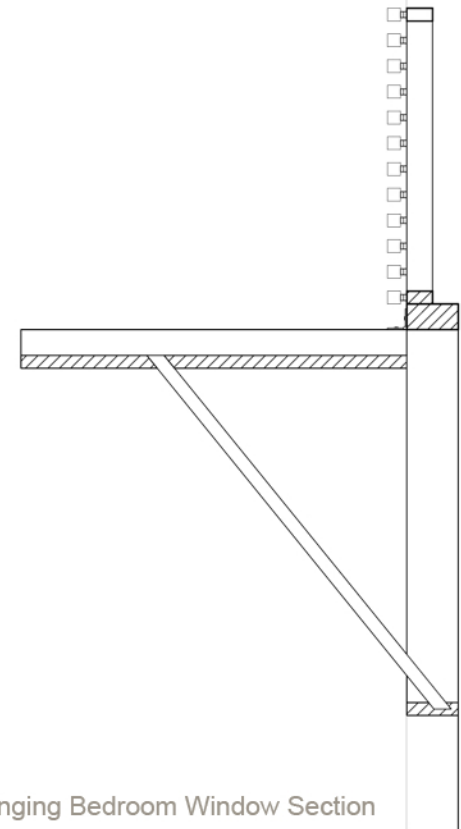
Roof Beam to Column
Connection Axonometric

The playful splitting of the roofs reach out to the horizon and to the sky. The double columns wrap the beams, which support the joists, which hold up the corrugated roof and trellis system. The layering of these systems create a dialogue of connection.

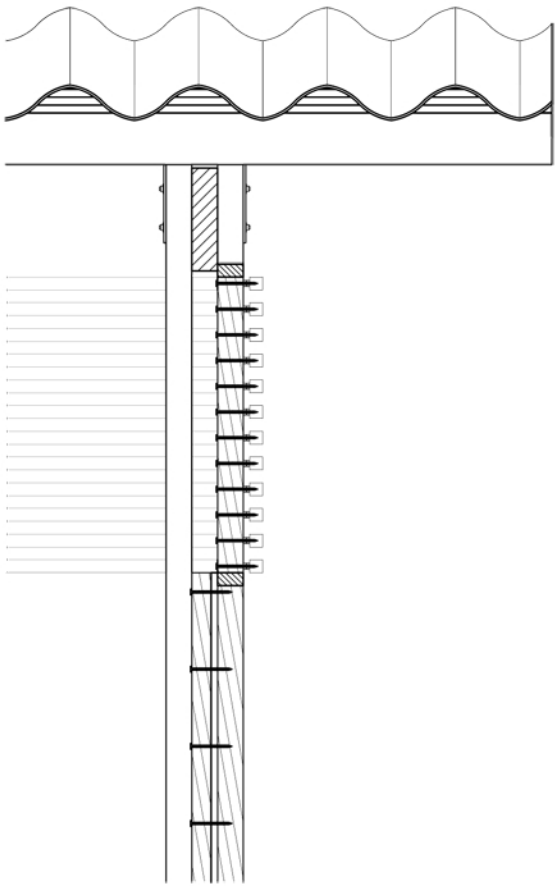


Hinging Bedroom Window
Axonometric

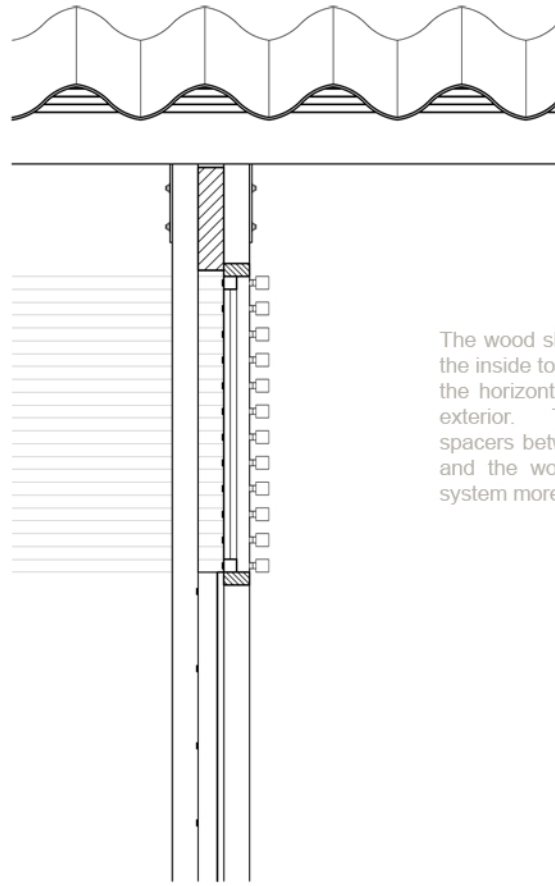
The screened bedroom windows hinge open toward the trees at a 90 degree angle for an unobstructed view to nature.



Hinging Bedroom Window Section

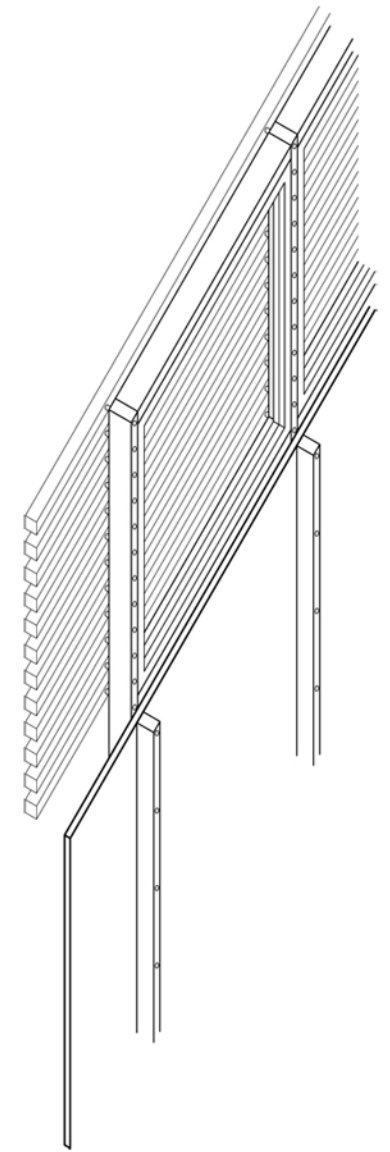


Wood Slats to Frame Section



Wood Slats to Frame Elevation

The wood slats are screwed from the inside to the frame to maintain the horizontal continuity from the exterior. There are 3/4 inch spacers between the wood frame and the wood slats to give the system more depth.



Wood Slats to Frame Axonometric



Wood Slats connected to frame

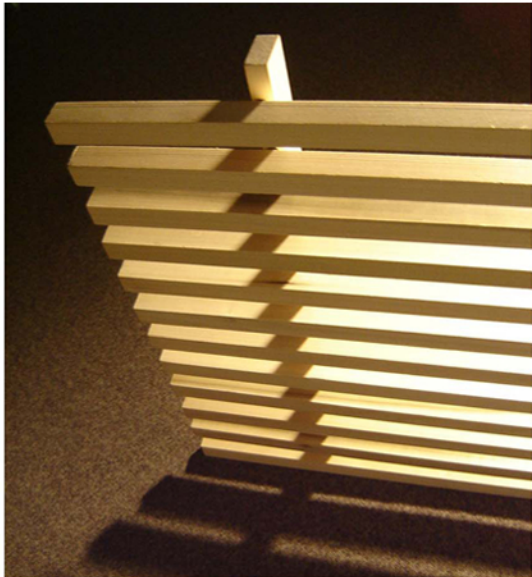
The wood slats in the shelters are constructed of 1" x 1" Jarrah wood. They are spaced vertically with 1 inch openings. They are connected to a frame by screws from the back and have a 3/4 inch spacer between the two systems. They are vertically supported every two feet to avoid warping in the weather.



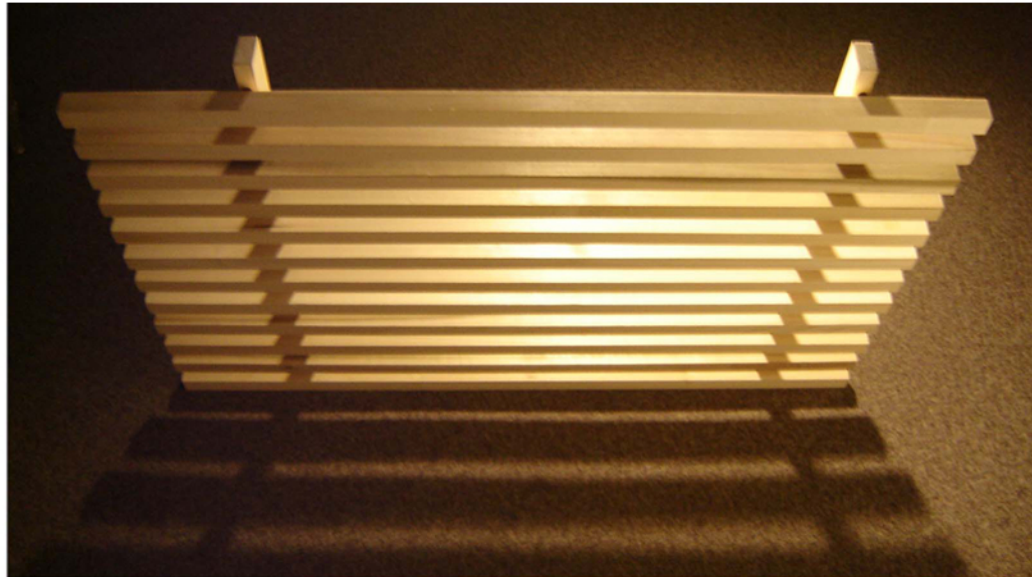
Continuous Wood Slat System



Shadow detail

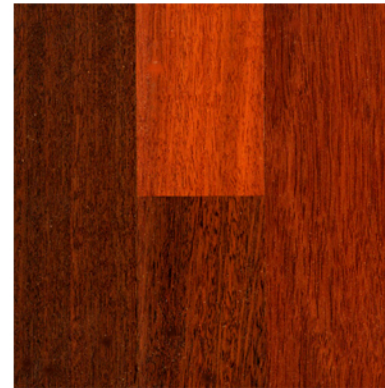


Slat view from exterior side



Exterior slat view





The slats are constructed of Jarrah wood, a wood natural to temperate Australia known for its excellent durability outdoors due to high natural resistance to decay, rot, fire, termites, marine borers and most acids. The wood has a clean smooth surface, dense, straight grain, and is a pinkish red color that darkens through outdoor exposure. The wood is left unfinished, and this rawness allows for the material to weather and let nature take back to the site.



Tower Facade Detail



Roof Terrace



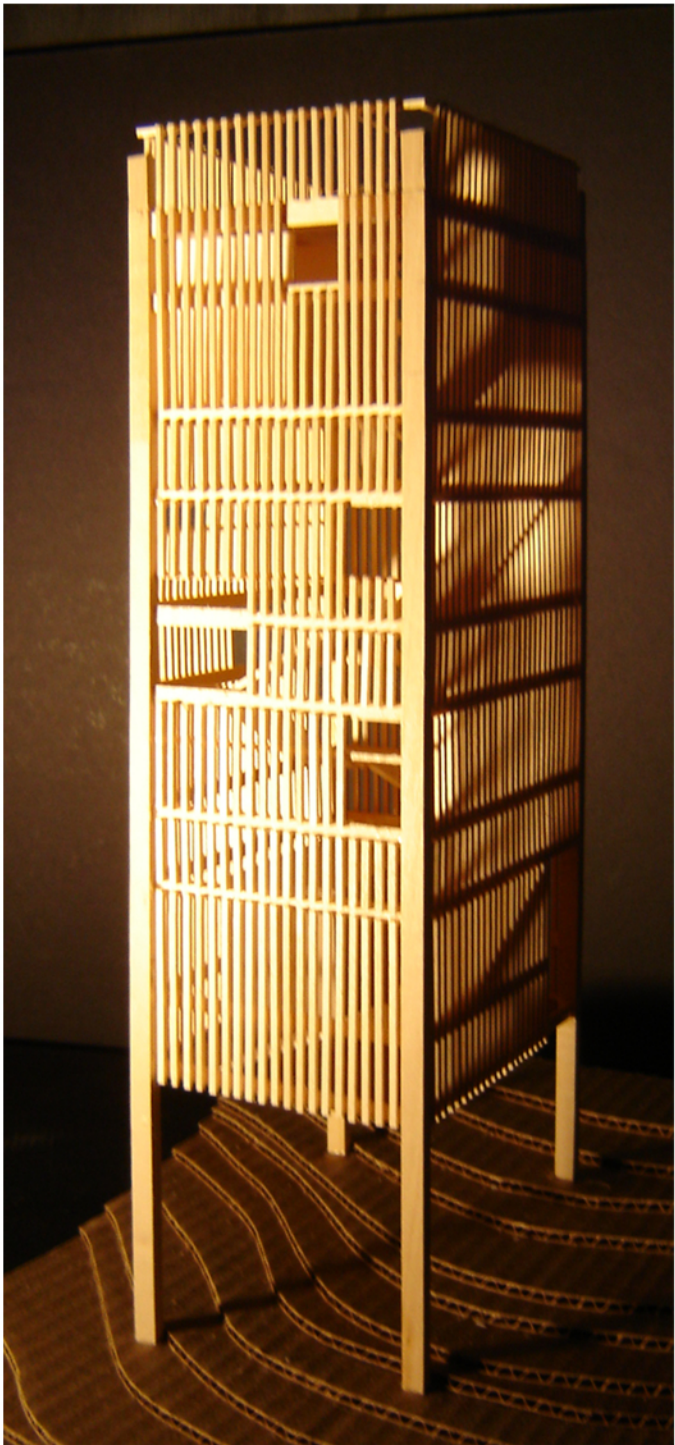
Showers



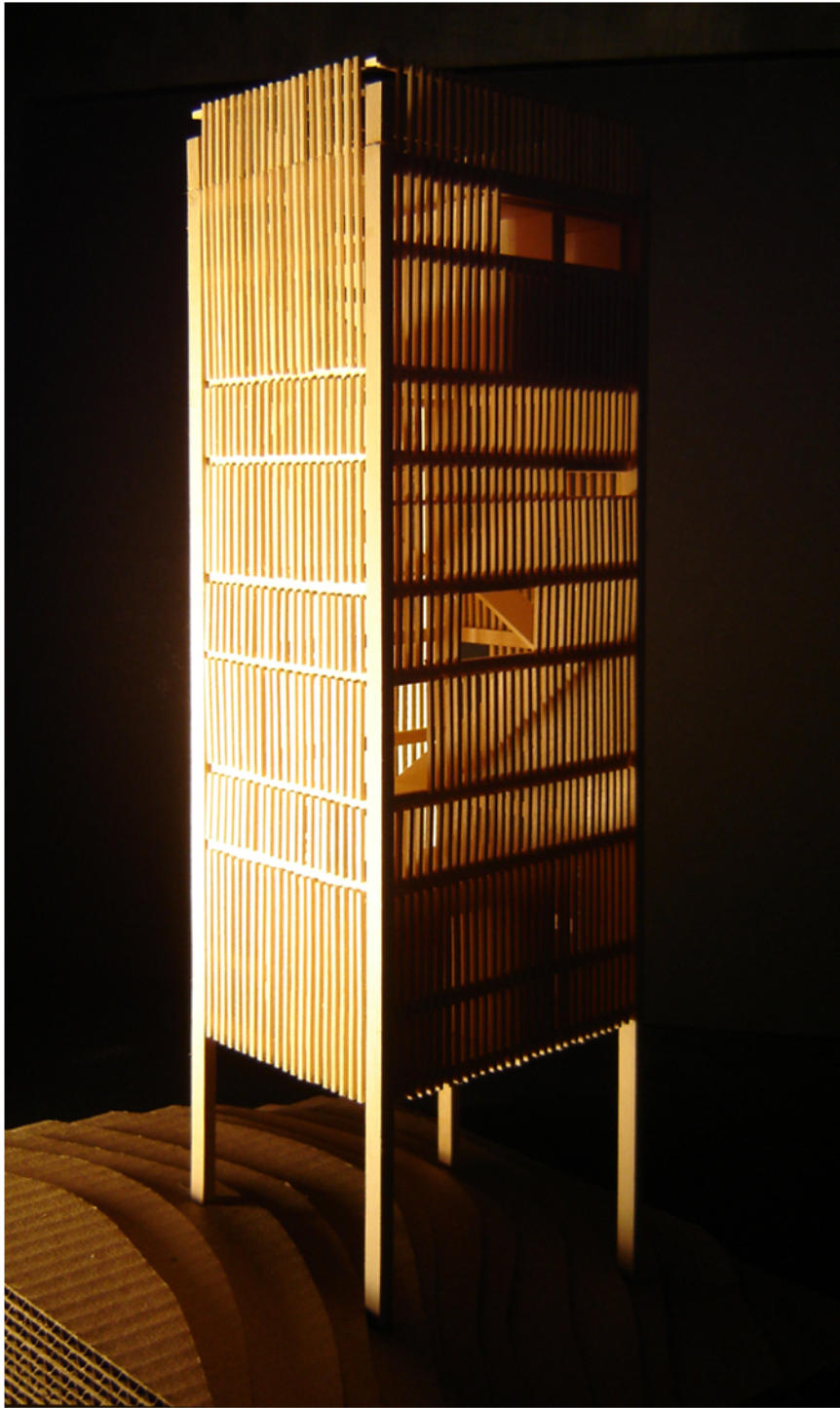
Tower Opening

The observation towers use a similar emphasis on controlled views by screening, but the wood slats are vertical and double in size. They are a broken vertically instead of maintaining the continuous lines. They connect to the beams behind them by black U-plates from the exterior. The slats are recessed back from the columns instead of extending beyond the structure. These differences in articulation arise because the towers serve a different function, and should be demarcated in a different manner.

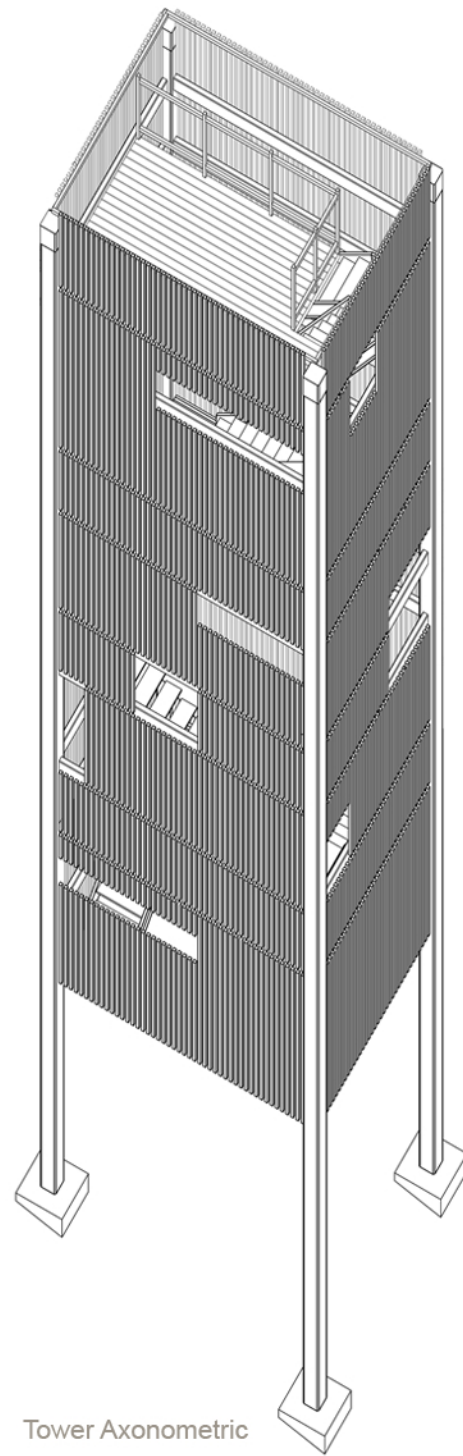
The towers contain toilets on the first level, and showers on the top level. Rising up the stairs, the strategic views along the forward axis and outward to the trees are framed in certain spots. The showers at the top give the person a reason to make this climb and experience the dramatic views.



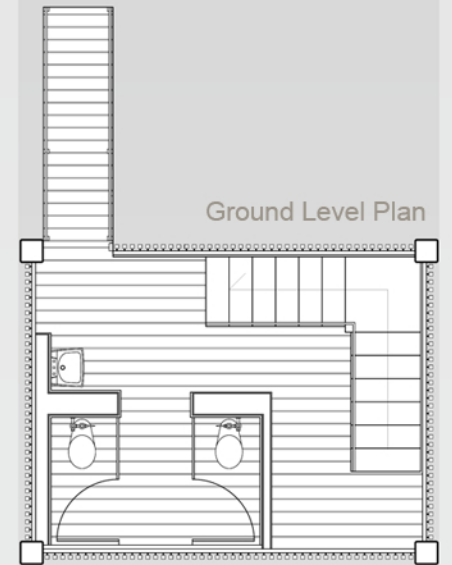
Tower Exterior



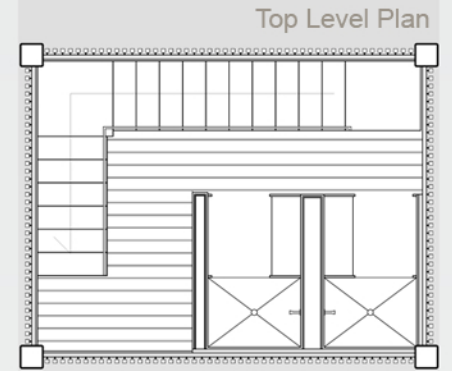
Tower Exterior



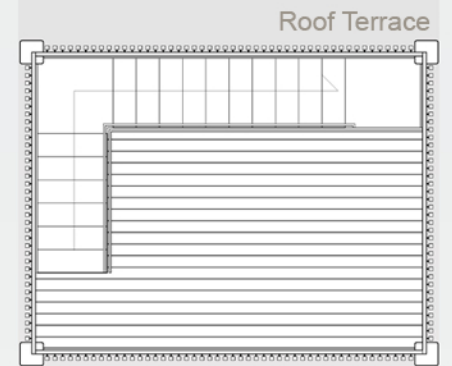
Tower Axonometric



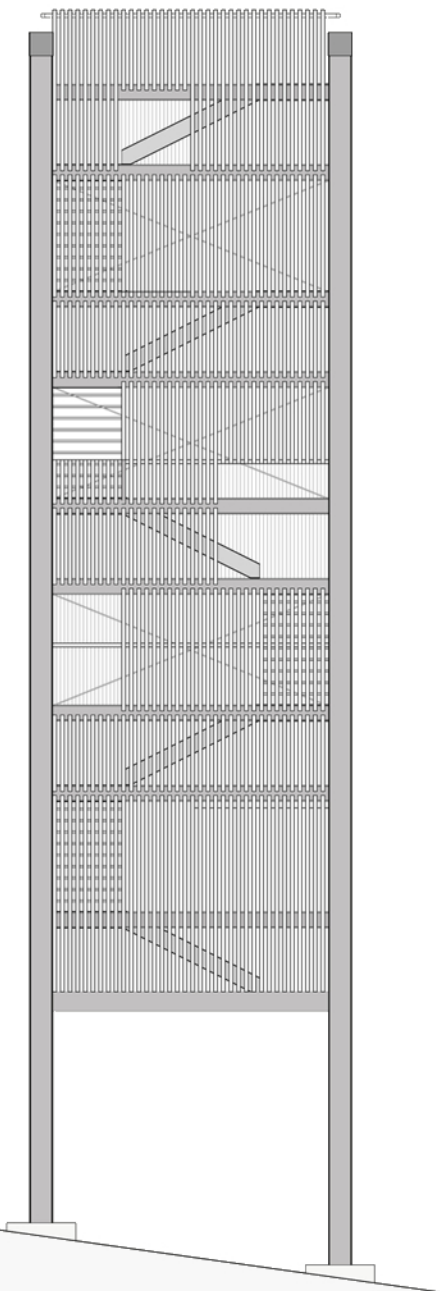
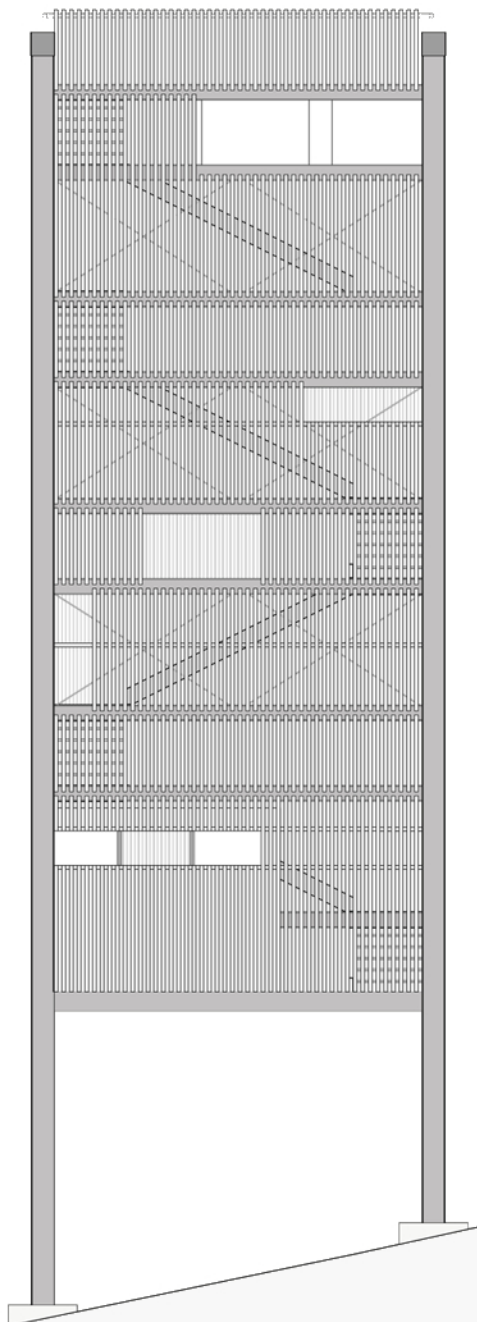
Ground Level Plan



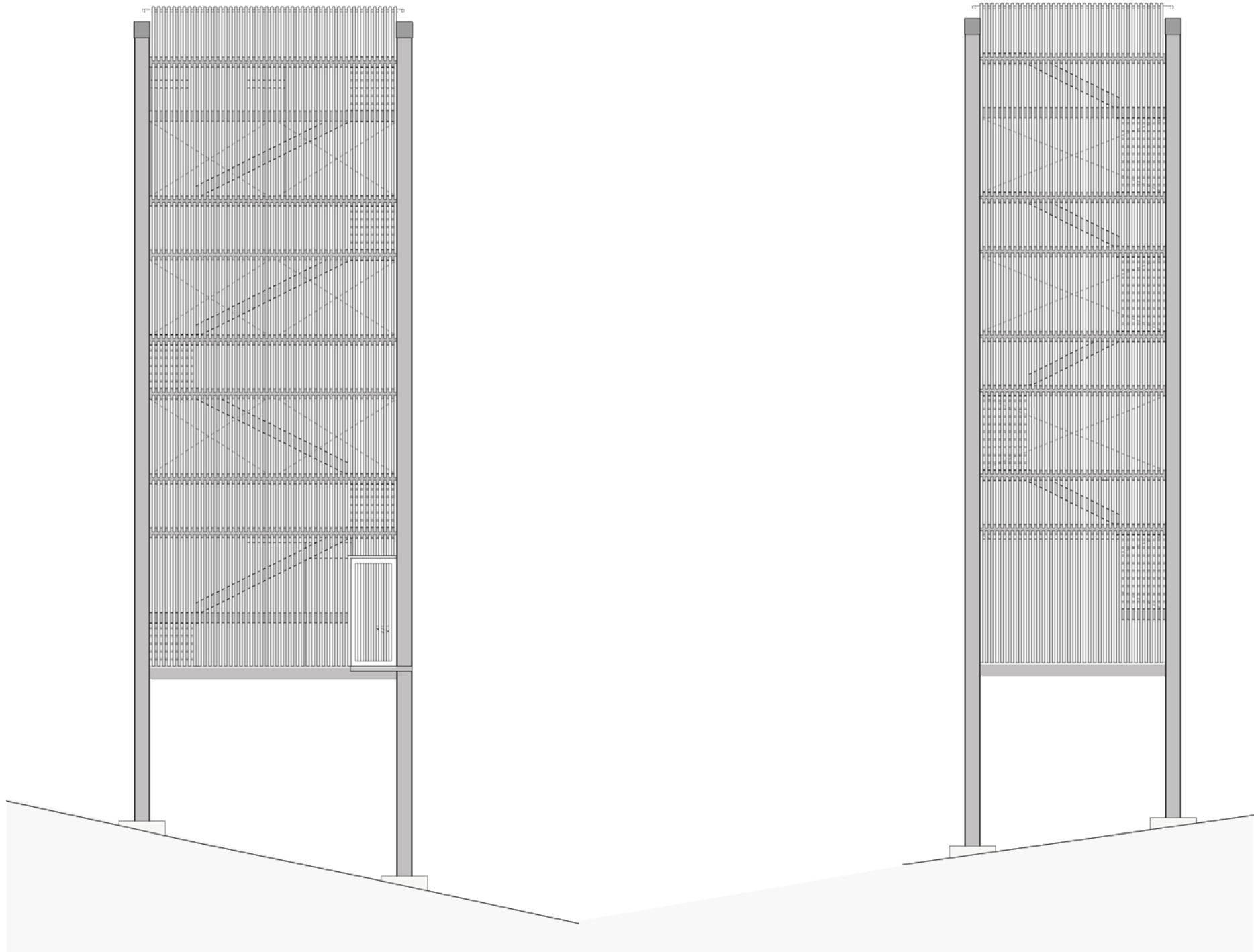
Top Level Plan

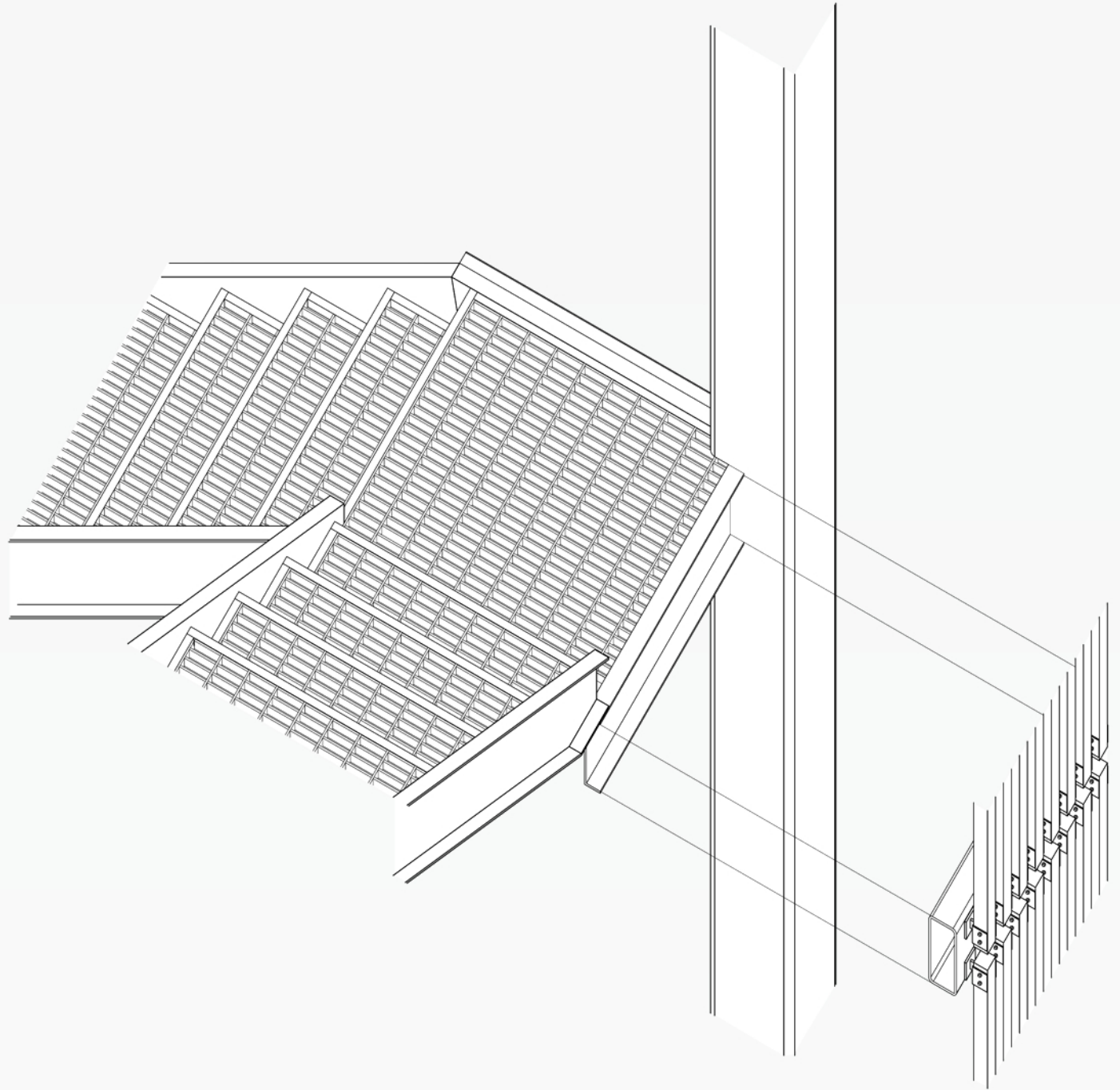
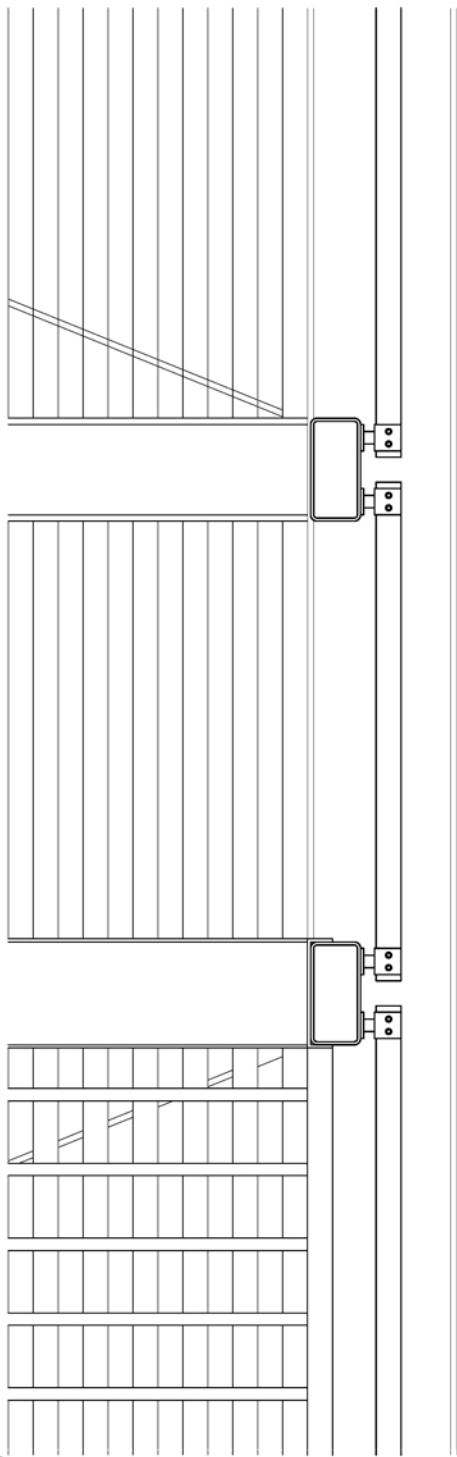


Roof Terrace

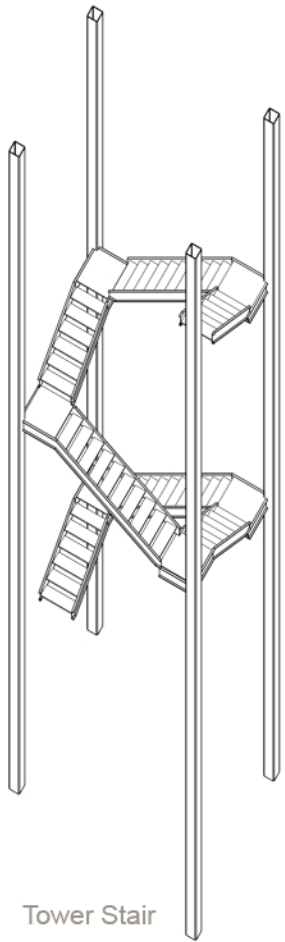


Tower Elevations

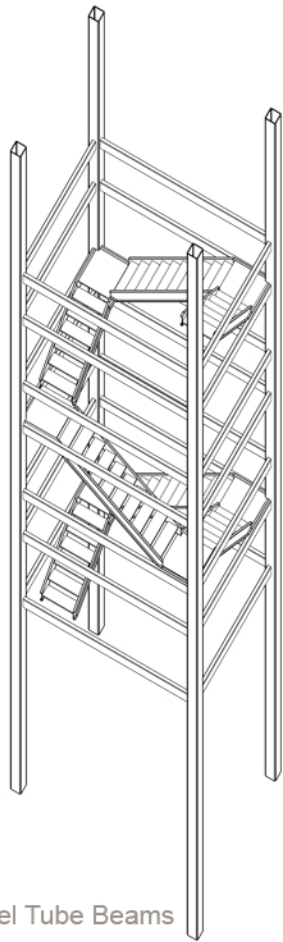




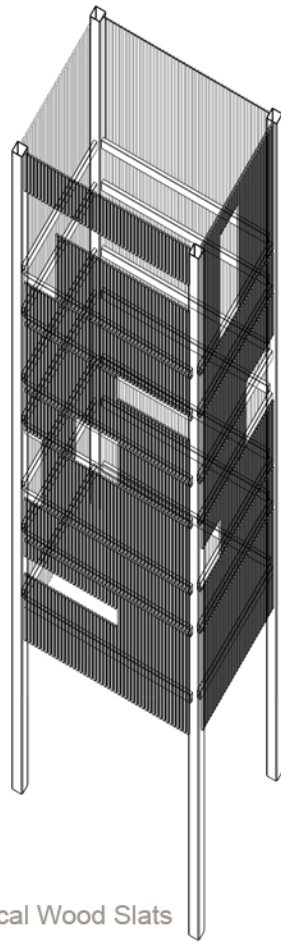
Tower Connections Detail



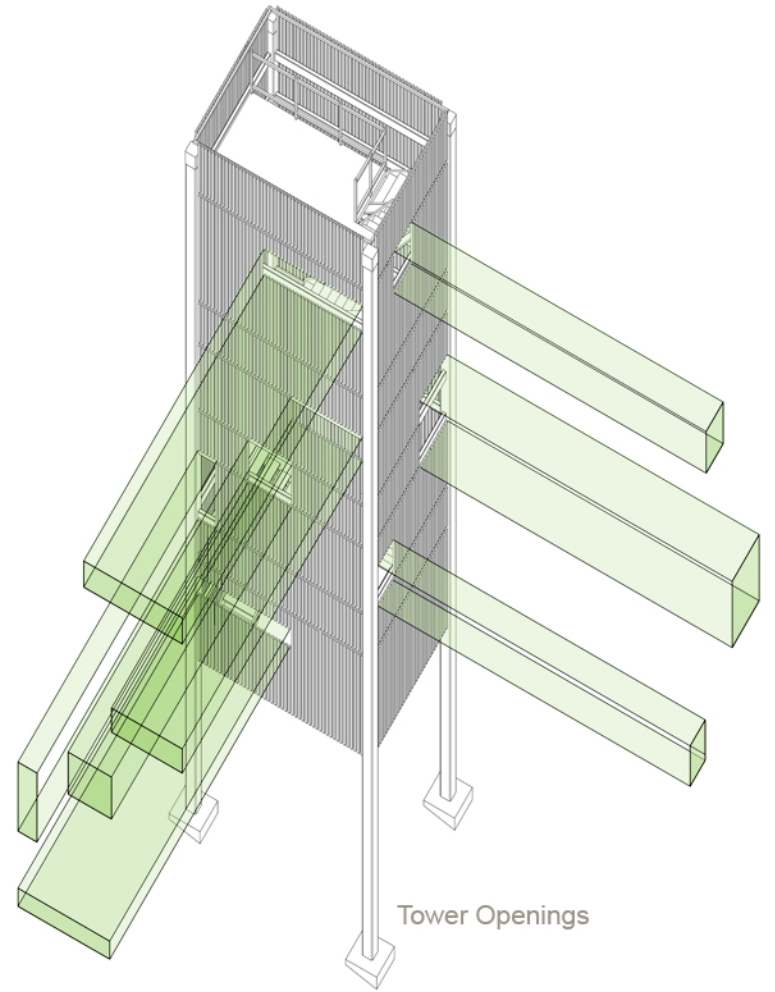
Tower Stair



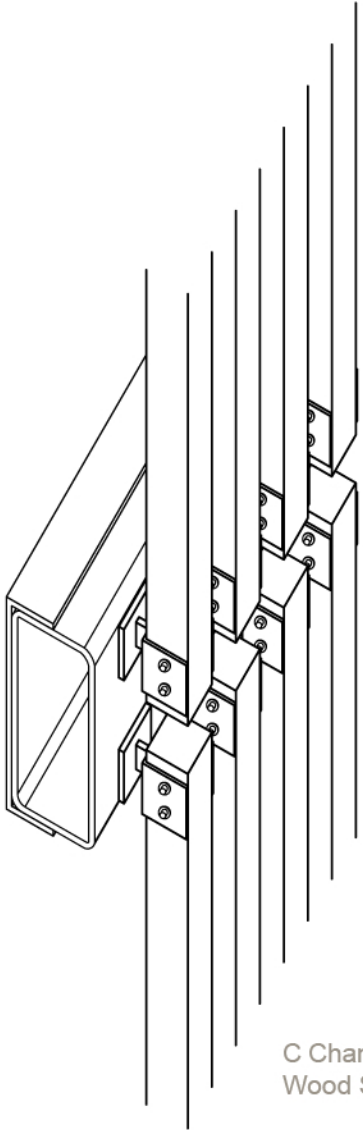
Steel Tube Beams



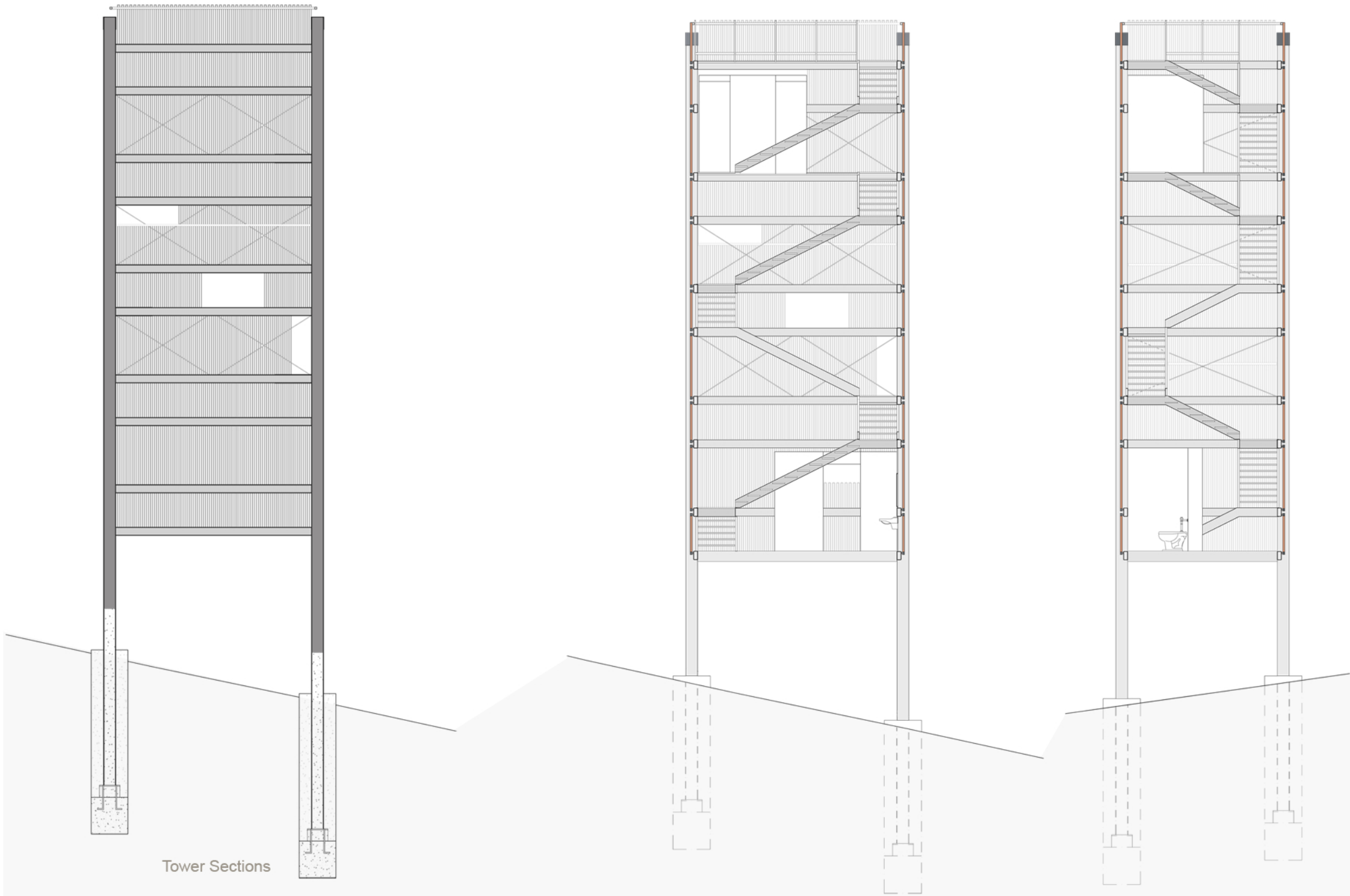
Vertical Wood Slats



Tower Openings



C Chanel to Steel Tube to
Wood Slat Connection



Tower Sections

Photo Credits

All photographs by the author.

Beck, Haig and Jackie Cooper. *Glenn Murcutt: A Singular Architectural Practice*. Mulgrave, Australia: The Images Publishing Group, 2002.

Berrizbeitia, Anita and Linda Pollak. *Inside Outside: Between Architecture and Landscape*. Gloucester: Rockport Publishers, 1999.

Bognar, Botond. *Kengo Kumo: Selected Works*. New York: Princeton Architectural Press, 2005.

Corner, James. *Recovering Landscape*. New York: Princeton Architectural Press, 1999.

Cosgrove, Denis and Stephen Daniels. *The Iconography of Landscape*. New York: Cambridge University Press, 1988.

Drew, Philip. *Touch This Earth Lightly: Glenn Murcutt in His Own Words*. Potts Point, Australia: Duffy & Snellgrove, 1999.

Farrelly, E. M. *Three Houses: Glenn Murcutt*. London: Phaidon Press, 1993.

Goud, Philip. *Tropo Architects*. Singapore: Periplus Editions, 2005.

Hoffman, Donald. *Frank Lloyd Wright: Architecture and Nature*. Toronto: General Publishing Company, 1986.

Howey, John. *The Sarasota School of Architecture 1941-1966*. Boston: MIT Press, 1997.

Morrow, Theresa. *James Cutler*. Gloucester: Rockport Publishers, 1997.

Oliver, Paul. *Dwellins: The Vernacular House World Wide*. London: Phaidon Press, 2003.

Olson, Sherri. *Cutler Anderson Architects*. Gloucester: Rockport Publishers, 2004.

Richardson, Phyllis. *XS: Big Ideas, Small Buildings*. New York: Universe Publishing, 2001

Smith, Elizabeth and Michael Darling. *The Architecture of R. M. Schindler*. New York: Harry N. Abrams Publishers, 2001.

Smith, Kathryn. *Schindler House*. New York: Harry N. Abrams Publishers, 2001.

Thoreau, Henry David. *Walden*. London: J. M. Dent & Sons, 1992.

Van Schaik, Leo. *Works and Projects: Sean Godsell*. Hong Kong: Phaidon Press, 2004.

Zevon, Susan. *Outside Architecture: Outdoor Rooms Designed by Architects*. Gloucester: Rockport Publishers, 1999.

Vita

Nerissa McCoy

August 1, 1981
Merritt Island, FL

2006

Master of Architecture

Virginia Polytechnic Institute and State
University

2004

Bachelor of Design in Architecture
Minor in Geography
Summa Cum Laude

University of Florida

