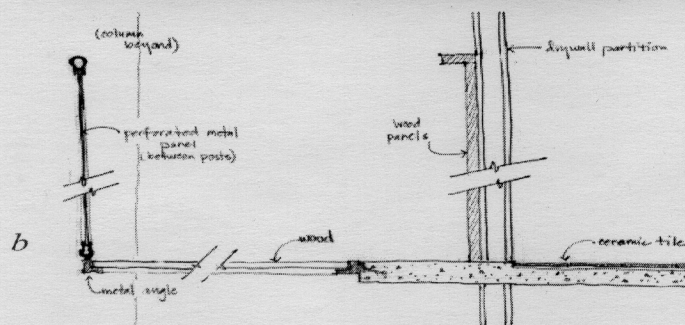
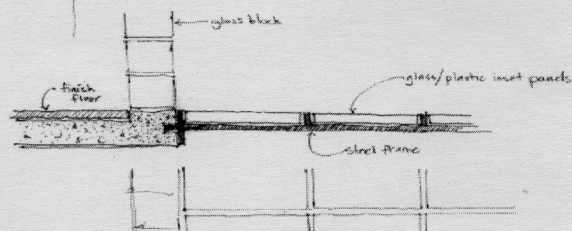


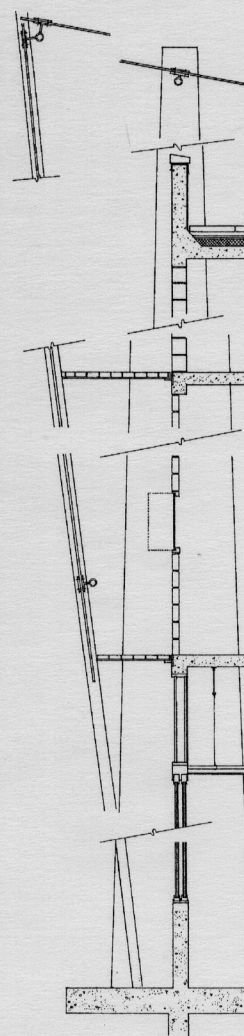
a



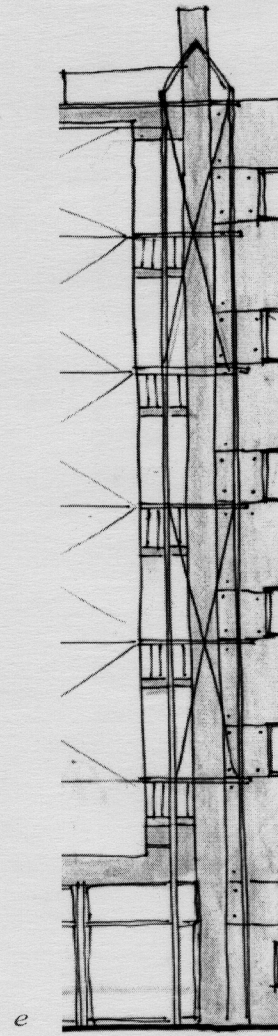
b



c



d



e

a model of guest structure mask at east exterior elevation

b section sketch of interior guest room walkways

c section / plan sketch of exterior balcony

d partial final section detail of host & guest structures at east exterior wall assembly

e preliminary sketch of exterior east elevation

STRUCTURE AS GUEST

The *guest structure* is the collection of secondary elements dependent on the host structure. The guest structure's primary feature is the *mask*, a metal screen assembly consisting of perforated metal panels supported by aluminum pipe columns on the exterior of the East and West elevations. The guest structure's pipe columns are dependent on the support of host structure's exterior tapered concrete columns. The balcony handrails span between the concrete columns of the host structure and are anchored at the base of the balcony, providing intermediate support to stabilize the guest structure's large metal panels. Steel plate fittings are bolted at rail connections.

The guest structure also includes the balconies off the guest rooms on the exterior and the walkways outside of the guest rooms on the interior (alongside the length of the atrium opening).

The exterior balconies are supported with a steel grid frame. At the inside, the frame is welded to steel plates embedded into the concrete at the slab edge. At the outside, the frame is connected to the guest structure's metal pipe columns. The frame is infilled with translucent glass panels to allow some light to filter to the balconies below.

The interior walkways similarly span between the concrete slab edge (at the guestroom's interior entry) to the support of structural trusses spanning between the interior columns of the host structure. Continuous steel angles run opposite each other along the concrete slab edge and at the bottom of the truss to carry the walkway's hardwood flooring. A stainless steel handrail runs along the top of the trusses and perforated metal panels along the sides, resembling the screen used at the exterior *mask*.

structure