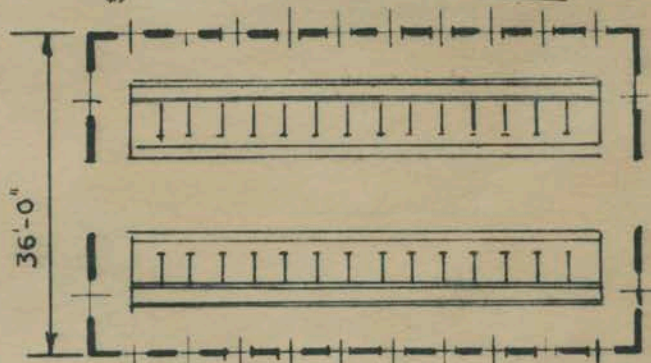


SECTION



PLAN

DAIRY BARN

THIS DAIRY BARN MEETS THE STANDARDS OF THE STATE DAIRY AND FOOD DIVISION ALSO THE WASHINGTON MARKET REQUIREMENTS. THE BARN IS THE STANDARD 36' WIDTH WITH THE COWS FACING OUT. THE PLAN SHOWN IS FOR 32 COWS, HOWEVER THE WORKING DRAWINGS GIVE TABLES FOR BARN LENGTHS FOR 8-50 COWS. THE HAY CAPACITY IS ONE TON PER FOOT OF LENGTH.



AGRICULTURAL ENGINEERING DEPT.
EXTENSION DIVISION - V.P. 1.

PLAN NO. B-1.51