

CROW

by

William T. Price

Thesis submitted to the Faculty of the
Virginia Polytechnic Institute and State University
in partial fulfillment of the requirements for the degree of

MASTER OF ARCHITECTURE

in
Architecture and Urban Studies

approved:

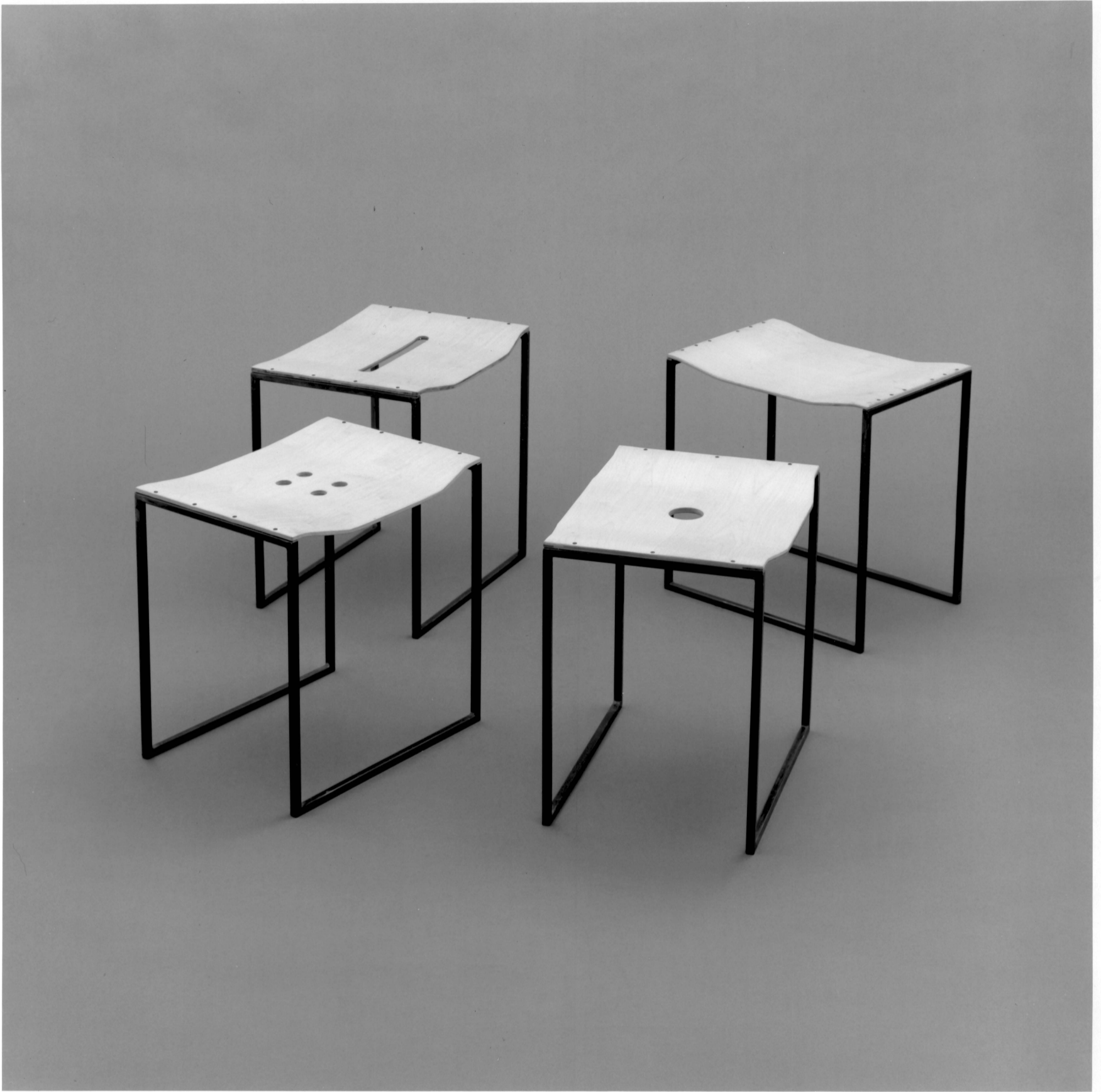
Hans C. Rott, Chairman

Dennis J. Kilper

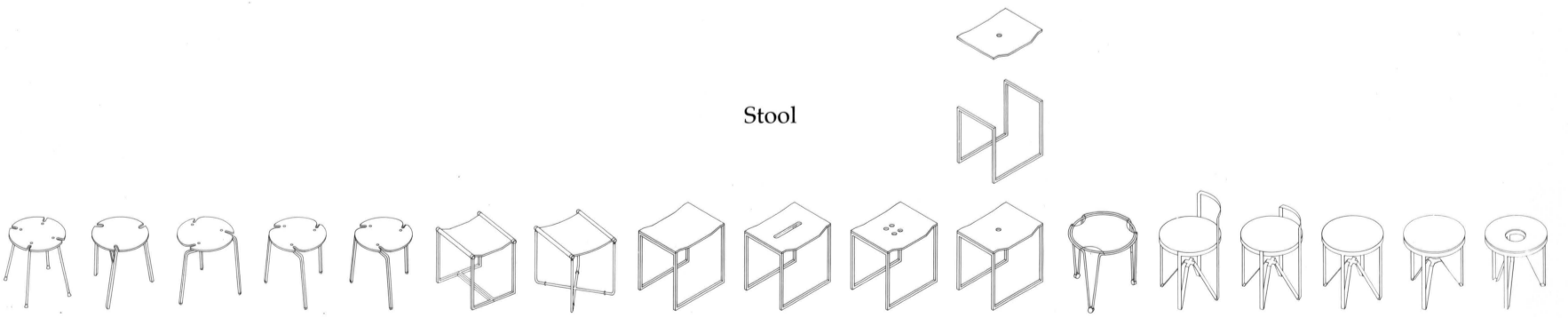
Michael O'Brien

1994
Blacksburg, Virginia

The numbers at the bottom of the pages
are not page numbers



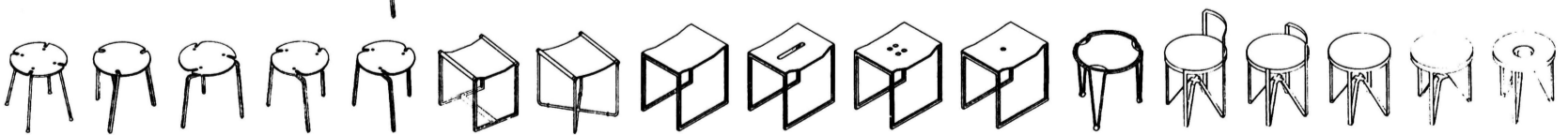
Stool

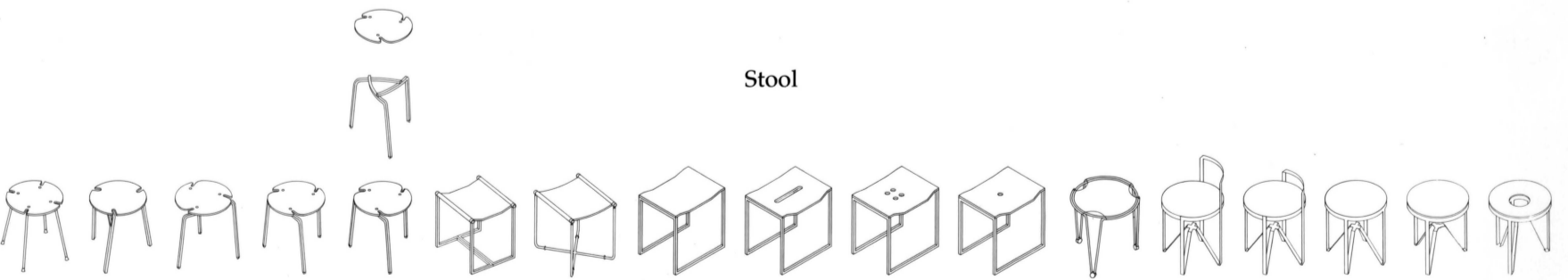
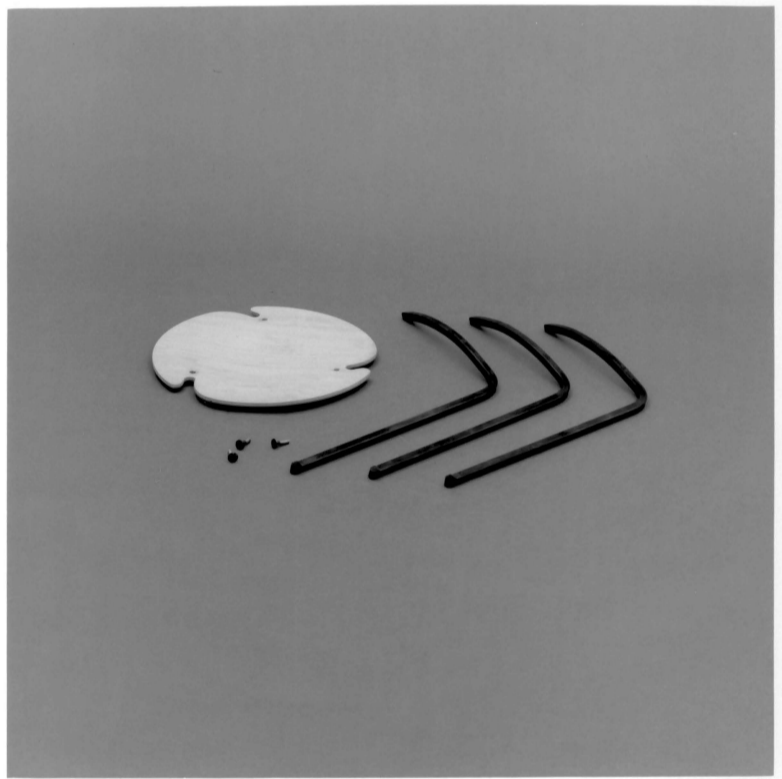
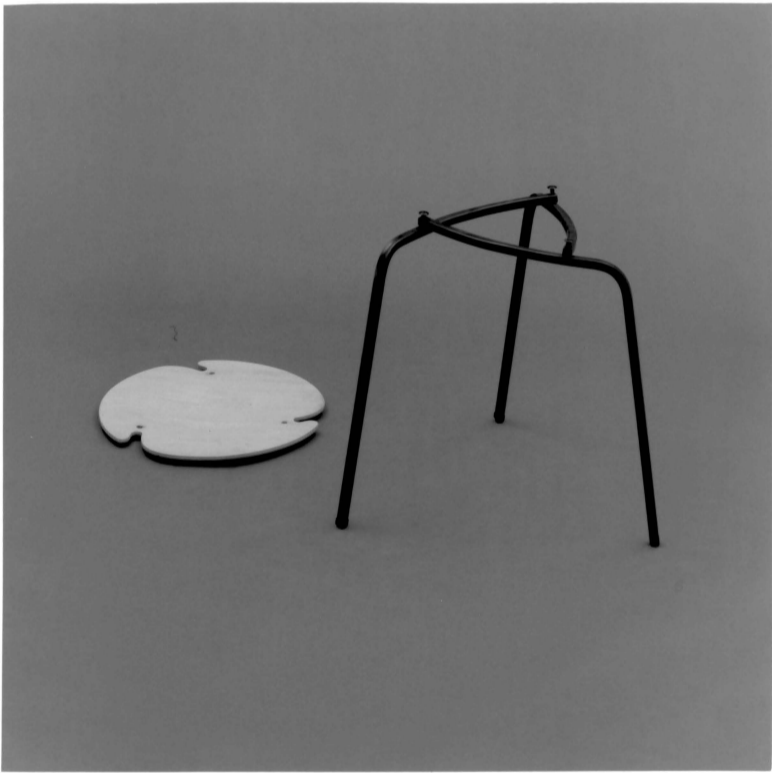


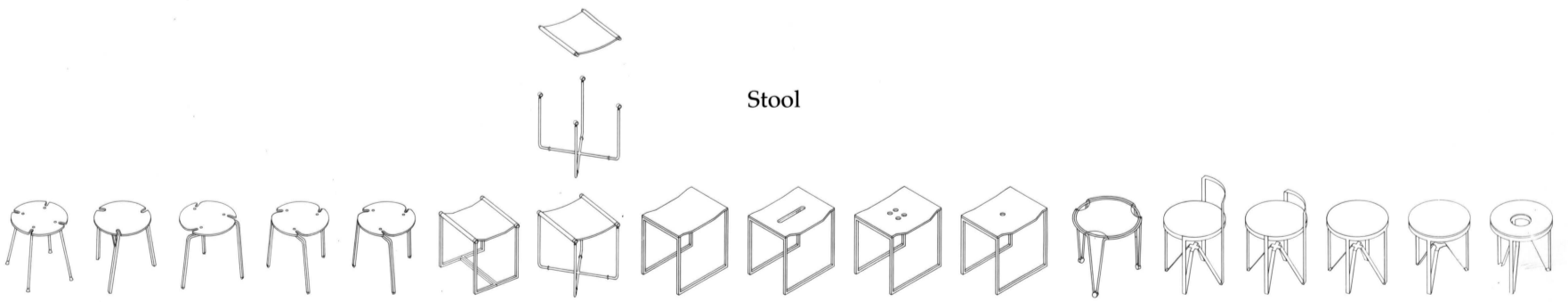
1-Delrin, 2-Laminated poplar veneer seat, 3-Steel pop rivet, 4-Laminated birch veneer seat, 5-Scooped maple seat, 6-Socket type bolt, 7-Laminated maple veneer seat slotted into ash dowel, 8-Laminated birch and ash veneer seat, 9-One-half inch diameter cold rolled steel rod, 10-One-eighth inch x two inch diameter hot rolled steel disk, 11-One-quarter inch cold rolled steel disk, 12-One-half inch x one-half inch x eighteen gauge mechanical tubing, 13-One-half inch x one-half inch cold rolled steel bar, 14-One-half inch x one-quarter inch cold rolled steel bar, 15-Nylon, 16-Round head socket type bolt, 17-Three-eighths inch diameter cold rolled steel rod, 18-One-eighth x one inch hot rolled strip, 19-Three-quarter inch diameter steel pipe (schedule 40) welded to three-eighths inch diameter steel rod, 20-Three-quarter inch diameter steel pipe (schedule 40) welded to one-half inch x one-half inch x eighteen gauge mechanical tubing, 21-Rubber o-ring



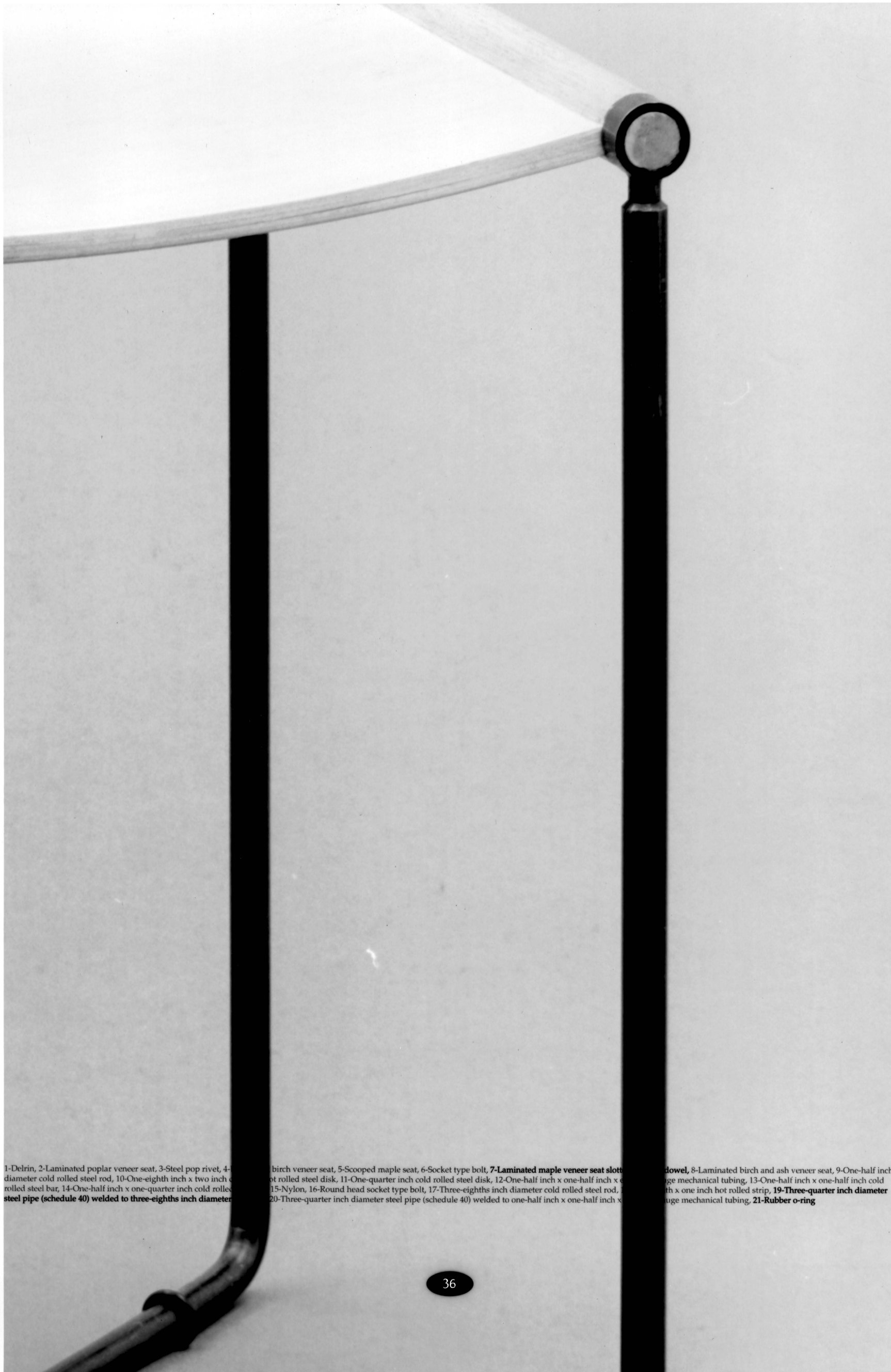
Stool







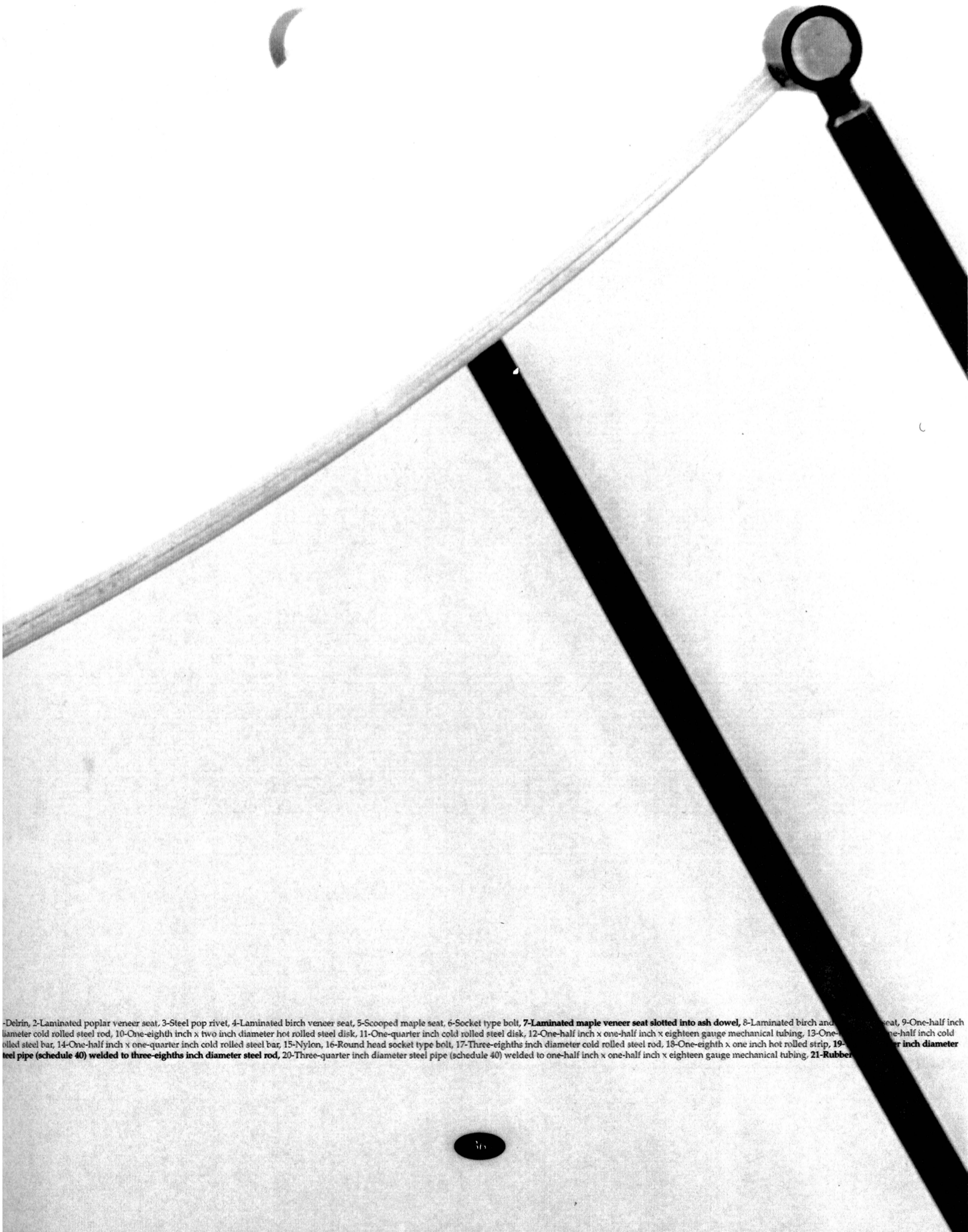
Stool



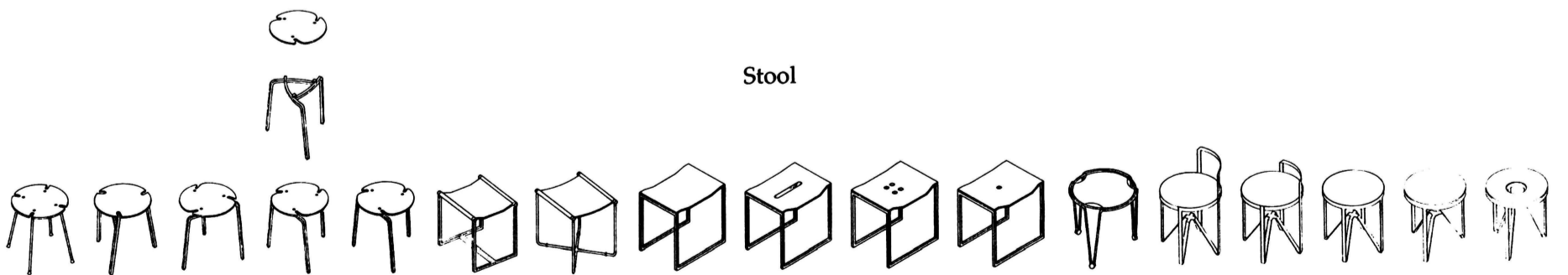
1-Delrin, 2-Laminated poplar veneer seat, 3-Steel pop rivet, 4-
diameter cold rolled steel rod, 10-One-eighth inch x two inch
rolled steel bar, 14-One-half inch x one-quarter inch cold rolled
steel pipe (schedule 40) welded to three-eighths inch diameter

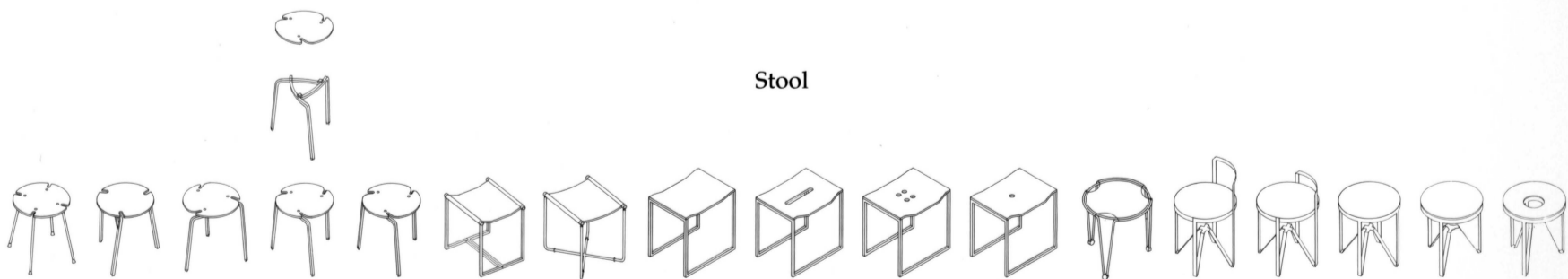
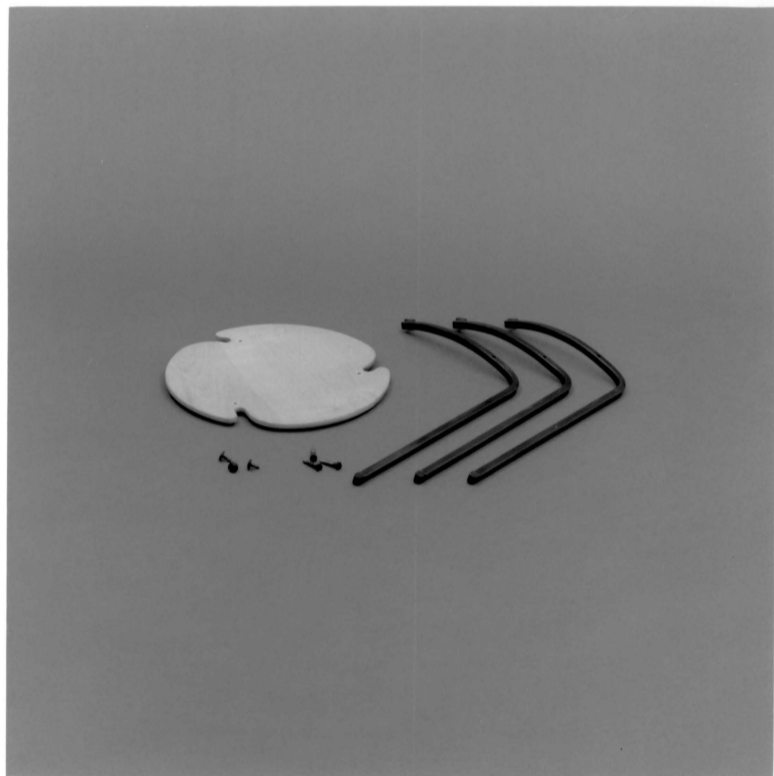
birch veneer seat, 5-Scooped maple seat, 6-Socket type bolt, 7-Laminated maple veneer seat slott
ot rolled steel disk, 11-One-quarter inch cold rolled steel disk, 12-One-half inch x one-half inch x
15-Nylon, 16-Round head socket type bolt, 17-Three-eighths inch diameter cold rolled steel rod, 1
20-Three-quarter inch diameter steel pipe (schedule 40) welded to one-half inch x one-half inch x

dowel, 8-Laminated birch and ash veneer seat, 9-One-half inch
uge mechanical tubing, 13-One-half inch x one-half inch cold
th x one inch hot rolled strip, 19-Three-quarter inch diameter
uge mechanical tubing, 21-Rubber o-ring



1-Delrin, 2-Laminated poplar veneer seat, 3-Steel pop rivet, 4-Laminated birch veneer seat, 5-Scooped maple seat, 6-Socket type bolt, 7-Laminated maple veneer seat slotted into ash dowel, 8-Laminated birch and maple veneer seat, 9-One-half inch diameter cold rolled steel rod, 10-One-eighth inch x two inch diameter hot rolled steel disk, 11-One-quarter inch cold rolled steel disk, 12-One-half inch x one-half inch x eighteen gauge mechanical tubing, 13-One-half inch cold rolled steel bar, 14-One-half inch x one-quarter inch cold rolled steel bar, 15-Nylon, 16-Round head socket type bolt, 17-Three-eighths inch diameter cold rolled steel rod, 18-One-eighth x one inch hot rolled strip, 19-One-half inch diameter steel pipe (schedule 40) welded to three-eighths inch diameter steel rod, 20-Three-quarter inch diameter steel pipe (schedule 40) welded to one-half inch x one-half inch x eighteen gauge mechanical tubing, 21-Rubber

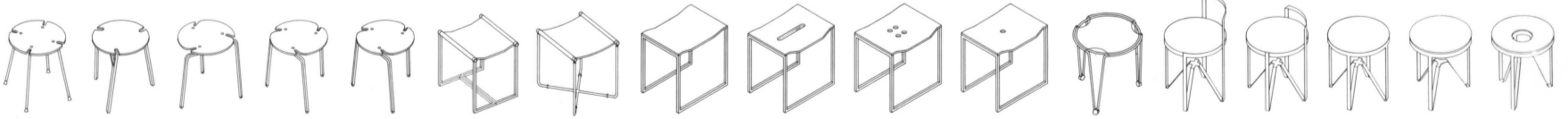




Stool

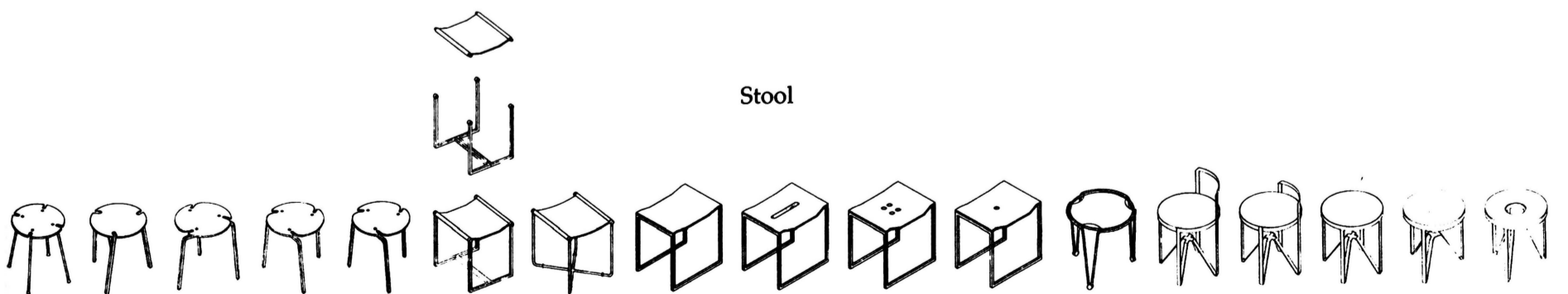
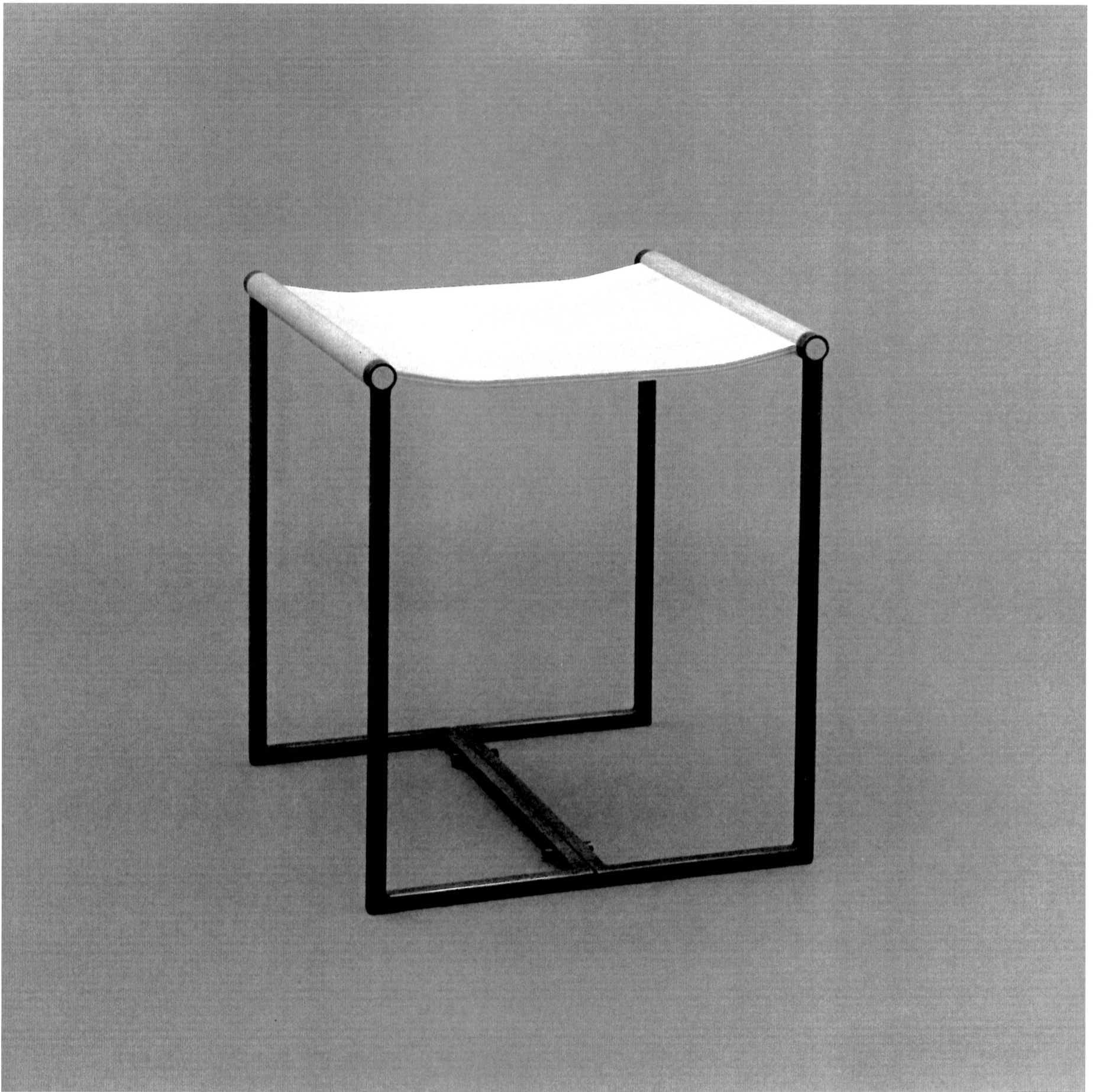


Stool

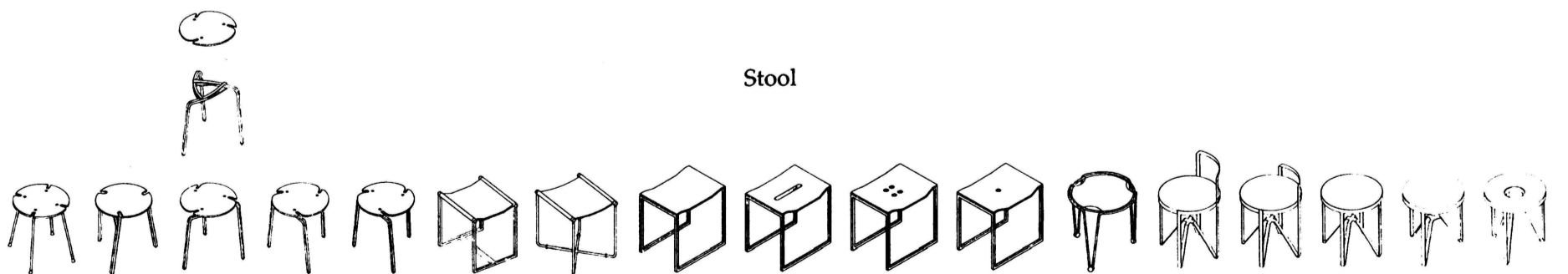




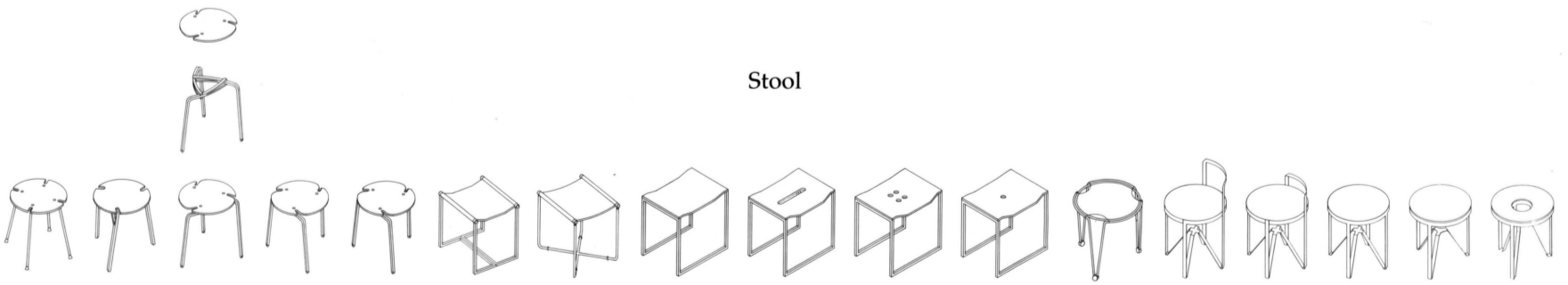
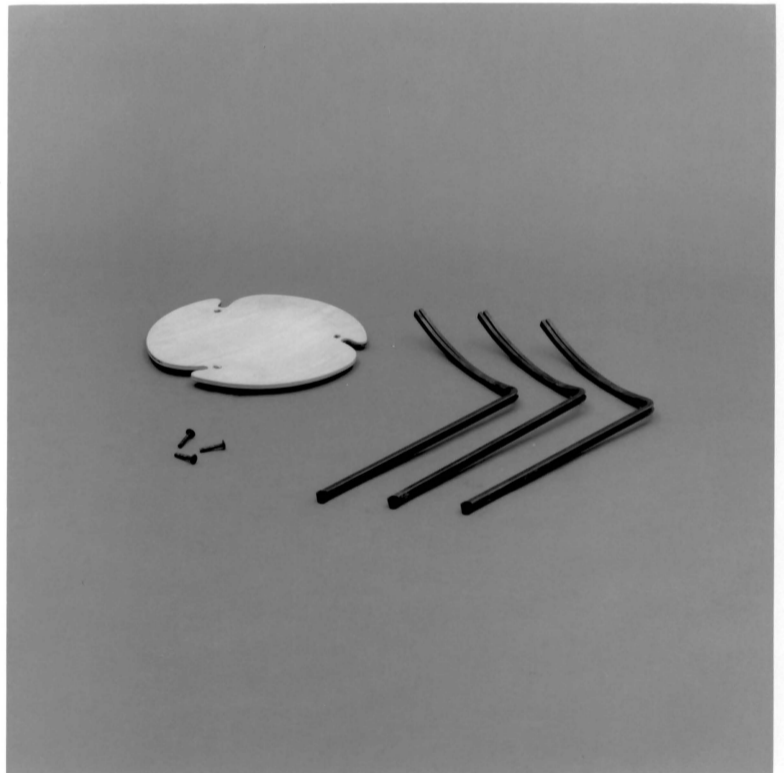
1-Delrin, 2-Laminated poplar veneer seat, 3-Steel pop rivet, 4-Laminated birch veneer seat, 5-Scooped maple seat, 6-Socket type bolt, 7-Laminated maple veneer seat slotted into ash dowel, 8-Laminated birch and ash veneer seat, 9-One-half inch diameter cold rolled steel rod, 10-One-eighth inch x two inch diameter hot rolled steel disk, 11-One-quarter inch cold rolled steel disk, 12-One-half inch x one-half inch x eighteen gauge mechanical tubing, 13-One-half inch x one-half inch cold rolled steel bar, 14-One-half inch x one-quarter inch cold rolled steel bar, 15-Nylon, 16-Round head socket type bolt, 17-Three-eighths inch diameter cold rolled steel rod, 18-One-eighth x one inch hot rolled strip, 19-Three-quarter inch diameter steel pipe (schedule 40) welded to three-eighths inch diameter steel rod, 20-Three-quarter inch diameter steel pipe (schedule 40) welded to one-half inch x one-half inch x eighteen gauge mechanical tubing, 21-Rubber o-ring



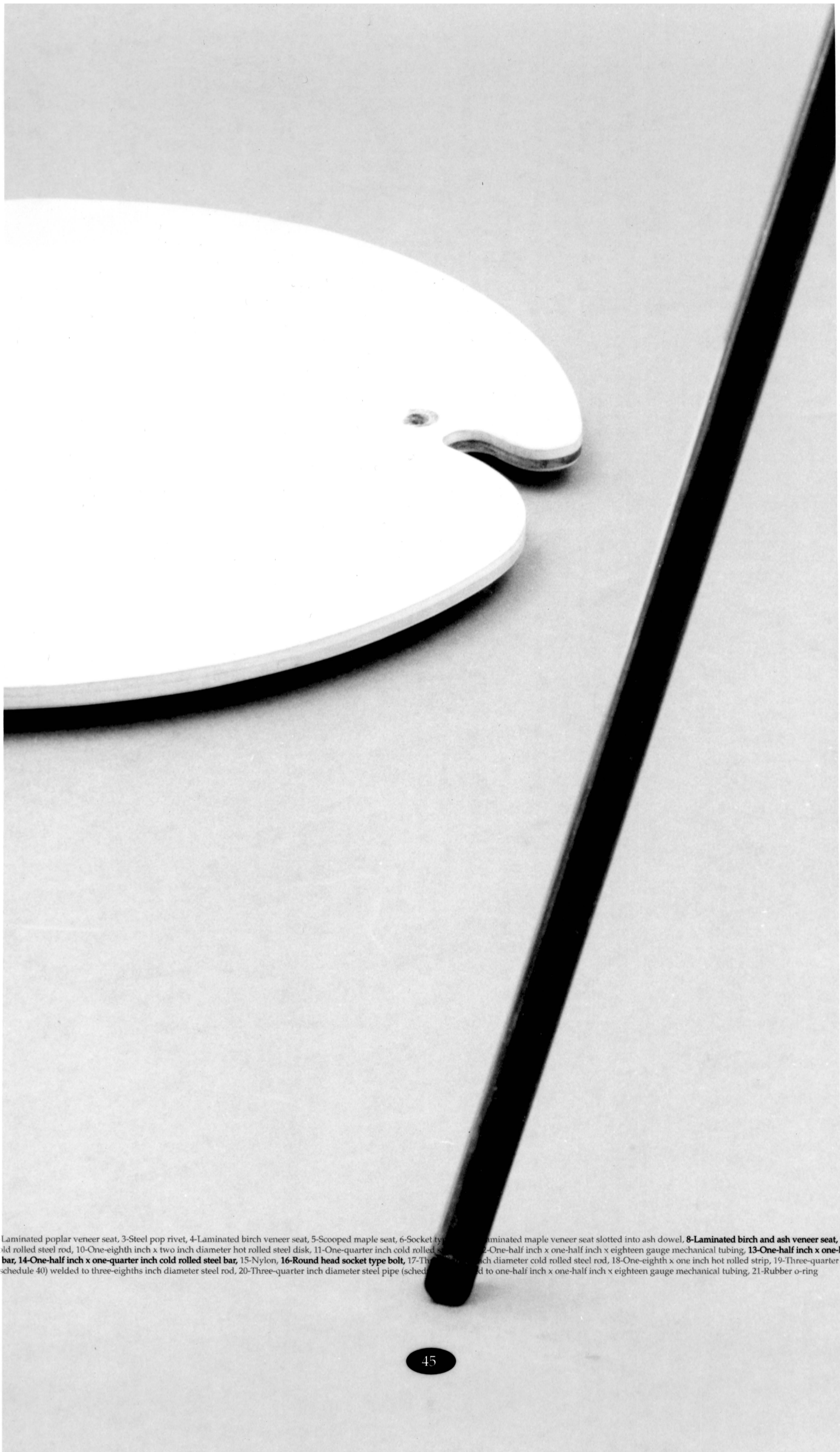
Stool



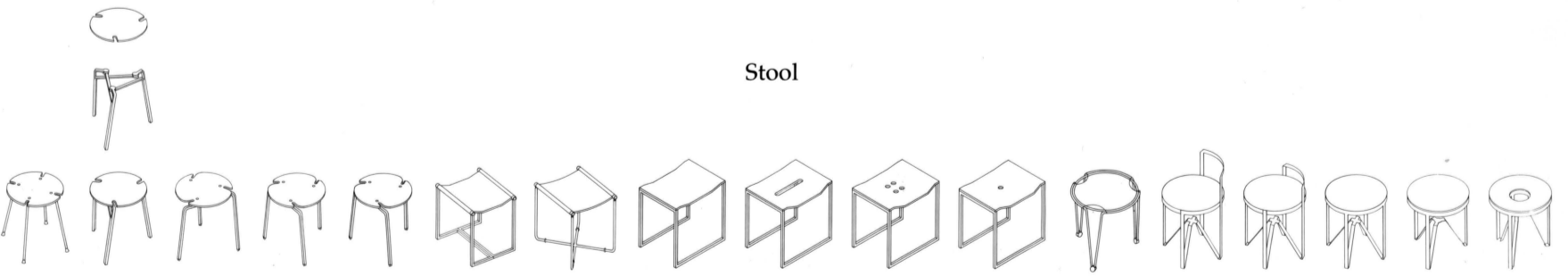
Stool



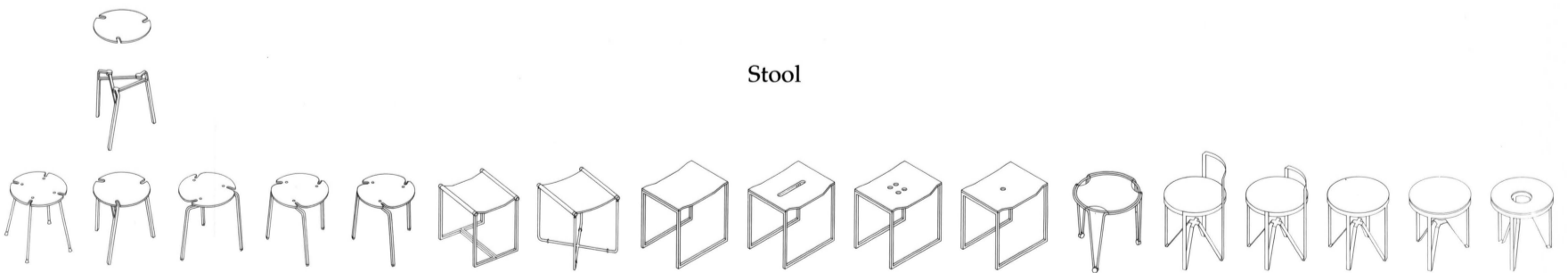
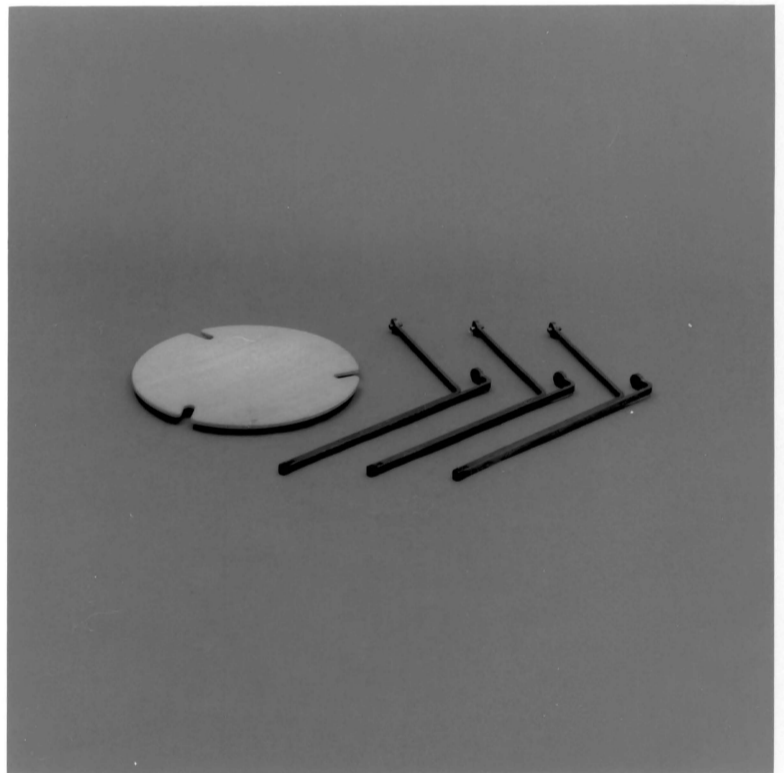
Stool



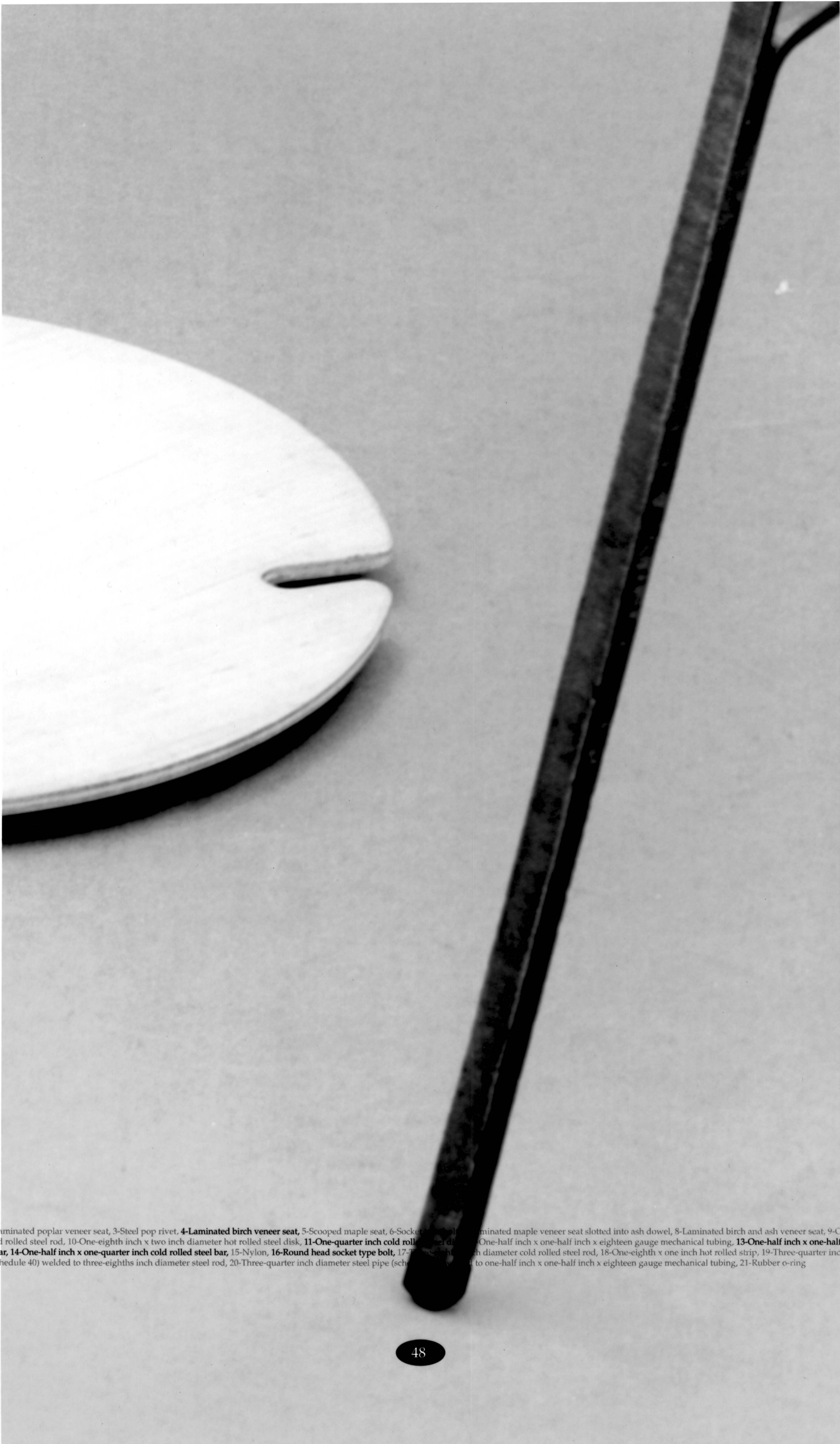
1-Delrin, 2-Laminated poplar veneer seat, 3-Steel pop rivet, 4-Laminated birch veneer seat, 5-Scooped maple seat, 6-Socket type bolt, 7-Laminated maple veneer seat slotted into ash dowel, **8-Laminated birch and ash veneer seat**, 9-One-half inch diameter cold rolled steel rod, 10-One-eighth inch x two inch diameter hot rolled steel disk, 11-One-quarter inch cold rolled steel rod, 12-One-half inch x one-half inch x eighteen gauge mechanical tubing, **13-One-half inch x one-half inch cold rolled steel bar**, **14-One-half inch x one-quarter inch cold rolled steel bar**, 15-Nylon, **16-Round head socket type bolt**, 17-Three-eighths inch diameter cold rolled steel rod, 18-One-eighth x one inch hot rolled strip, 19-Three-quarter inch diameter steel pipe (schedule 40) welded to three-eighths inch diameter steel rod, 20-Three-quarter inch diameter steel pipe (schedule 40) welded to one-half inch x one-half inch x eighteen gauge mechanical tubing, 21-Rubber o-ring



Stool



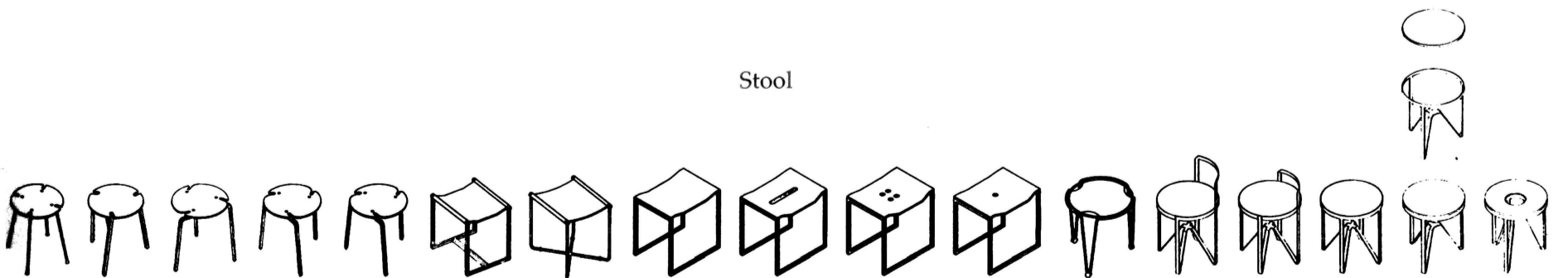
Stool



1-Delrin, 2-Laminated poplar veneer seat, 3-Steel pop rivet, 4-Laminated birch veneer seat, 5-Scooped maple seat, 6-Socket head cap screw, 7-Laminated maple veneer seat slotted into ash dowel, 8-Laminated birch and ash veneer seat, 9-One-half inch diameter cold rolled steel rod, 10-One-eighth inch x two inch diameter hot rolled steel disk, 11-One-quarter inch cold rolled steel disk, 12-One-half inch x one-half inch x eighteen gauge mechanical tubing, 13-One-half inch x one-half inch cold rolled steel bar, 14-One-half inch x one-quarter inch cold rolled steel bar, 15-Nylon, 16-Round head socket type bolt, 17-Three-eighths inch diameter cold rolled steel rod, 18-One-eighth x one inch hot rolled strip, 19-Three-quarter inch diameter steel pipe (schedule 40) welded to three-eighths inch diameter steel rod, 20-Three-quarter inch diameter steel pipe (schedule 40) welded to one-half inch x one-half inch x eighteen gauge mechanical tubing, 21-Rubber o-ring

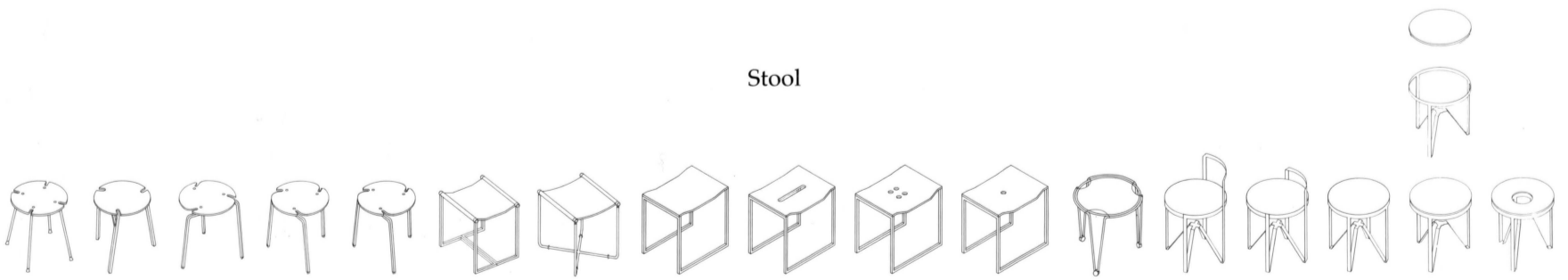


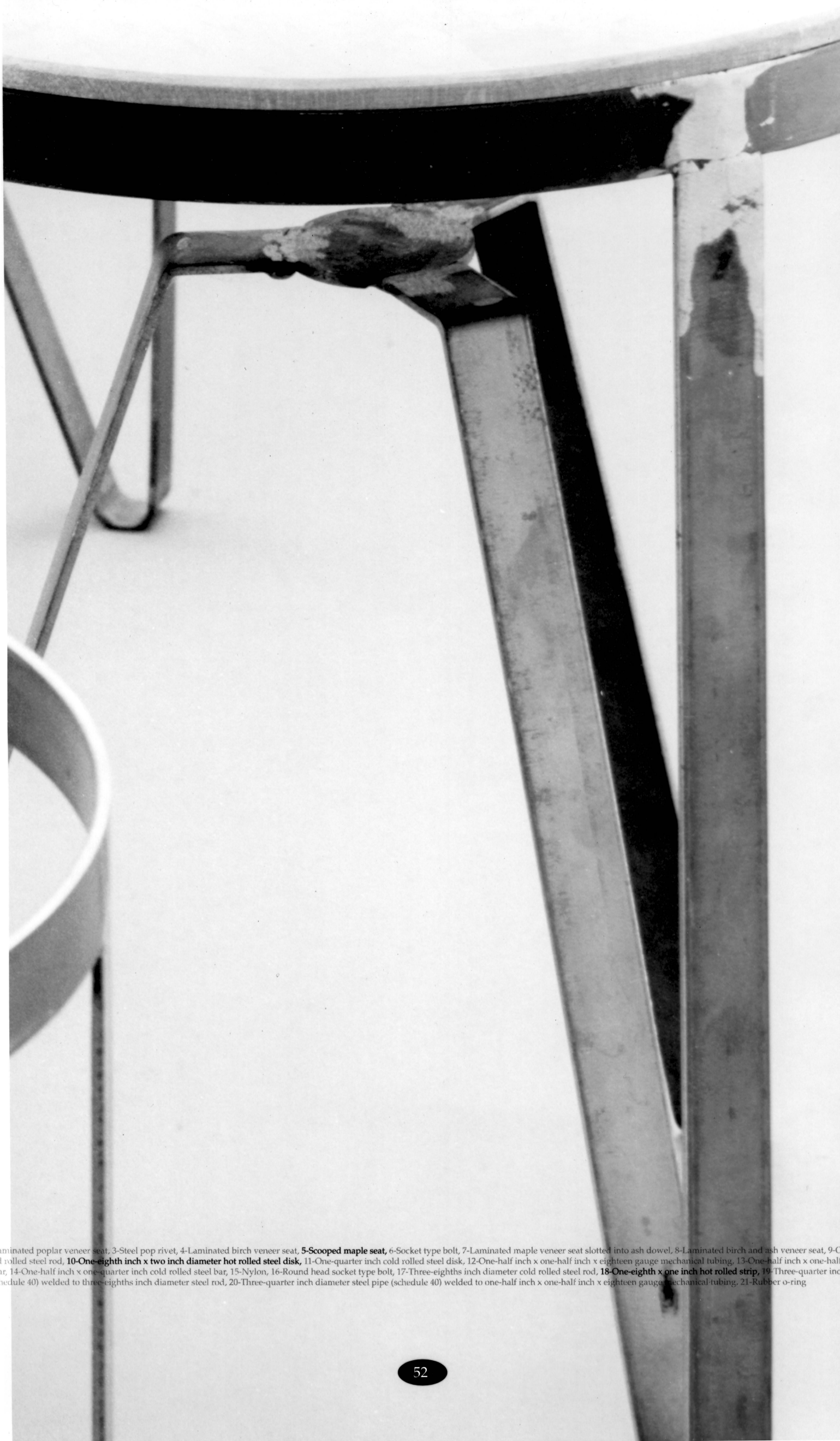
Stool





Stool

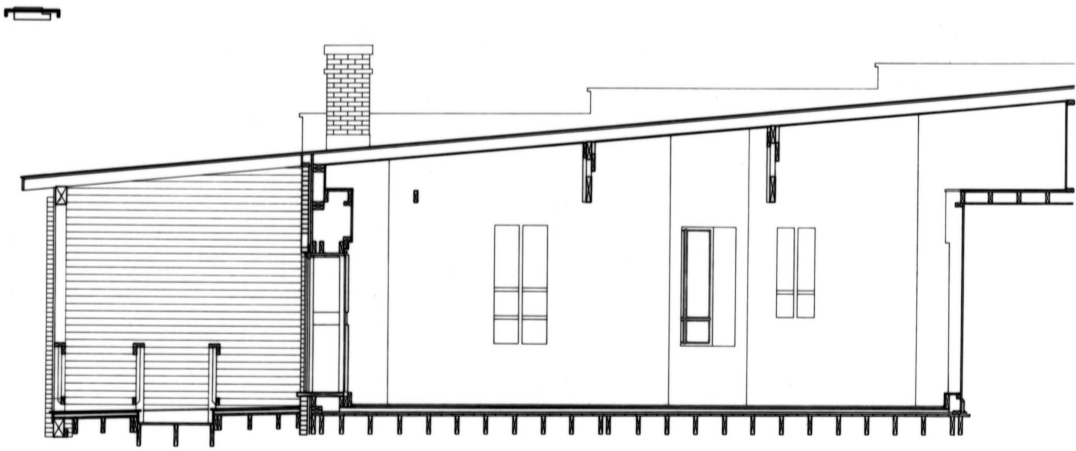
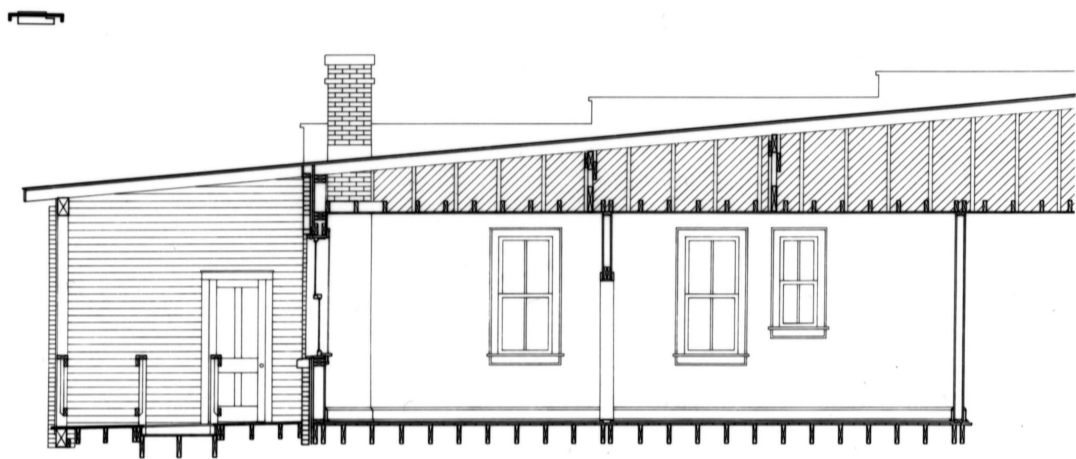




1-Delrin, 2-Laminated poplar veneer seat, 3-Steel pop rivet, 4-Laminated birch veneer seat, 5-Scooped maple seat, 6-Socket type bolt, 7-Laminated maple veneer seat slotted into ash dowel, 8-Laminated birch and ash veneer seat, 9-One-half inch diameter cold rolled steel rod, 10-One-eighth inch x two inch diameter hot rolled steel disk, 11-One-quarter inch cold rolled steel disk, 12-One-half inch x one-half inch x eighteen gauge mechanical tubing, 13-One-half inch x one-half inch cold rolled steel bar, 14-One-half inch x one-quarter inch cold rolled steel bar, 15-Nylon, 16-Round head socket type bolt, 17-Three-eighths inch diameter cold rolled steel rod, 18-One-eighth x one inch hot rolled strip, 19-Three-quarter inch diameter steel pipe (schedule 40) welded to three-eighths inch diameter steel rod, 20-Three-quarter inch diameter steel pipe (schedule 40) welded to one-half inch x one-half inch x eighteen gauge mechanical tubing, 21-Rubber o-ring



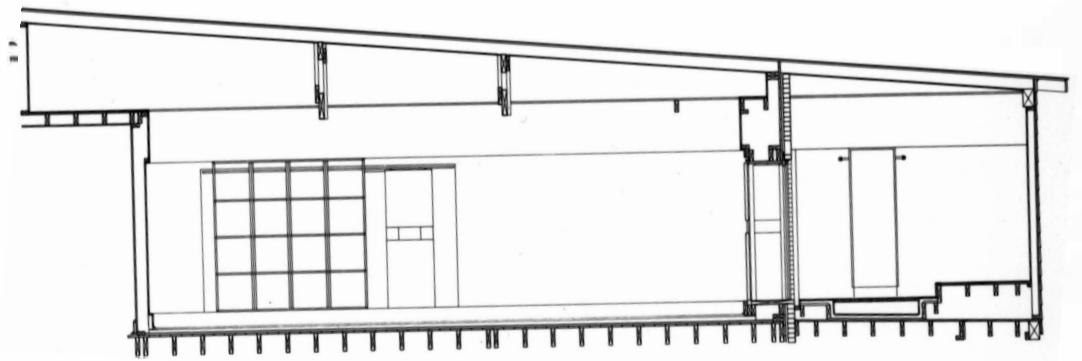
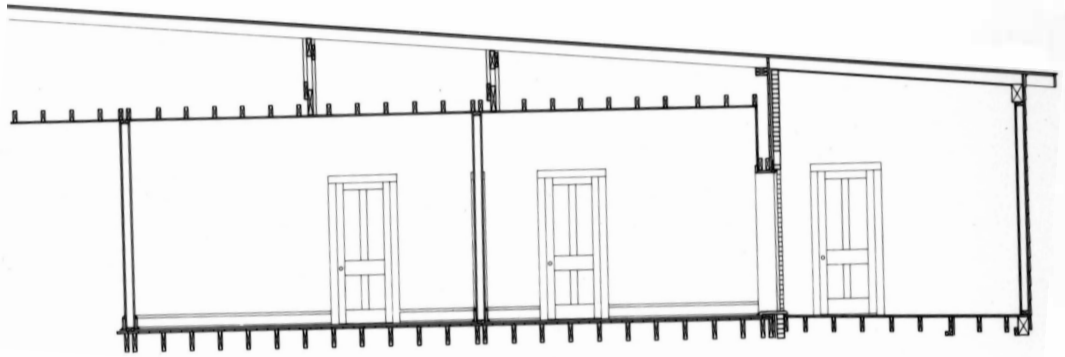
1-Deflex; 2-1/2 inch diameter cold rolled steel bar; 3-1/2 inch diameter hot rolled steel disk; 4-1/2 inch diameter cold rolled steel bar; 5-Scooped maple seat; 6-Socket type bolt; 7-Laminated maple veneer seat slotted into fish dowel; 8-Laminated birch and ash veneer seat; 9-One-half inch diameter cold rolled steel bar; 10-One-half inch x one-half inch x eighth gauge mechanical tubing; 11-One-quarter inch cold rolled steel disk; 12-One-half inch x one-half inch x eighth gauge mechanical tubing; 13-One-half inch x one-half inch cold rolled steel bar; 14-One-half inch x one-half inch x eighth gauge mechanical tubing; 15-Nylon; 16-Round head socket type bolt; 17-Three-eighths inch diameter cold rolled steel rod; 18-One-eighth x one inch hot rolled strip; 19-Three-quarter inch diameter cold rolled steel rod; 20-Three-quarter inch diameter steel pipe (schedule 40) welded to one-half inch x one-half inch x eighth gauge mechanical tubing; 21-Rubber o-ring



Before

After

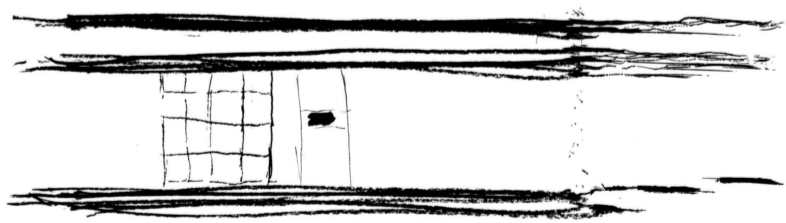
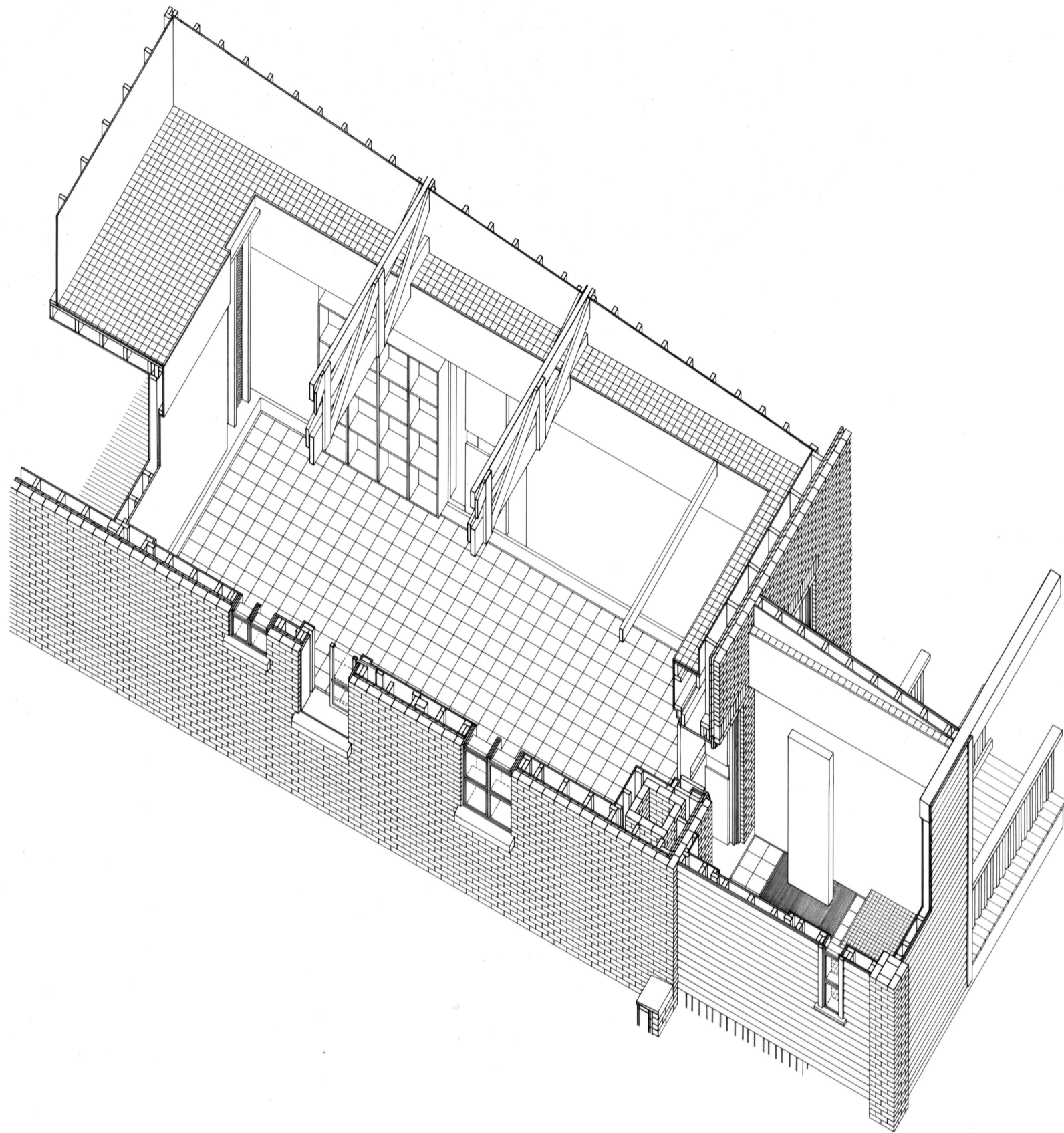
11'-0" 2'-6" 28'-0" 5'-9"

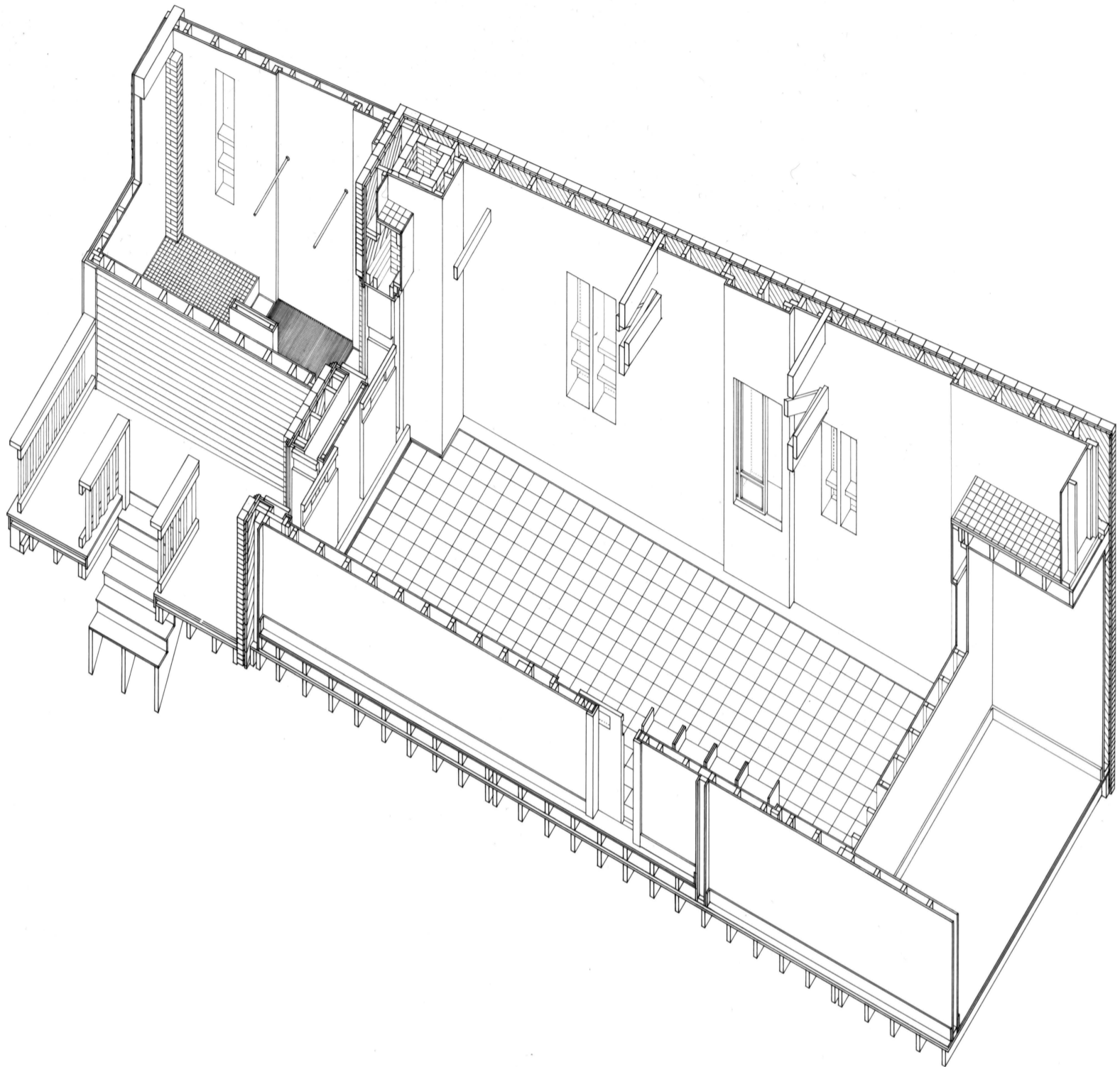


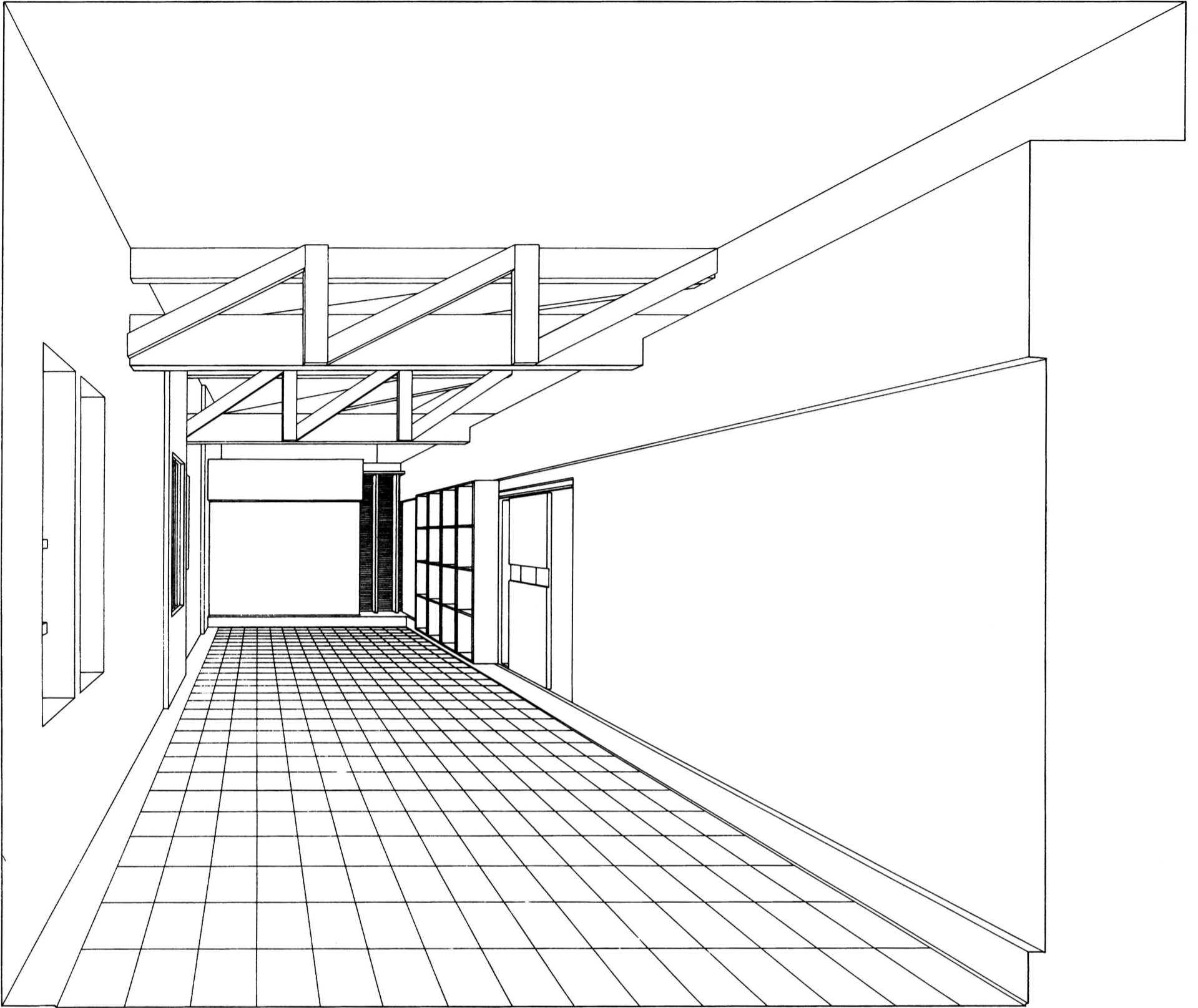
Before

After





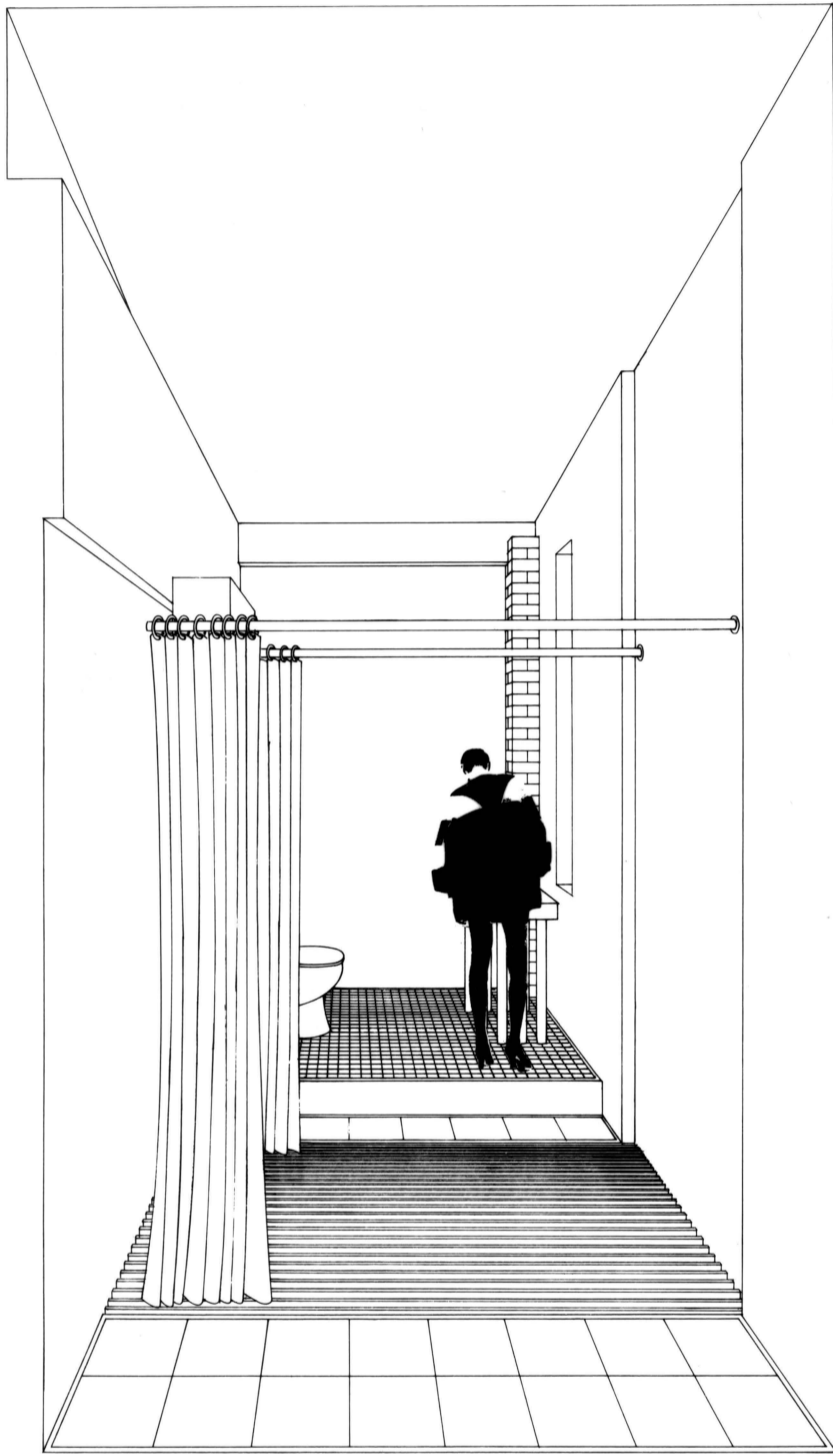




Perspective

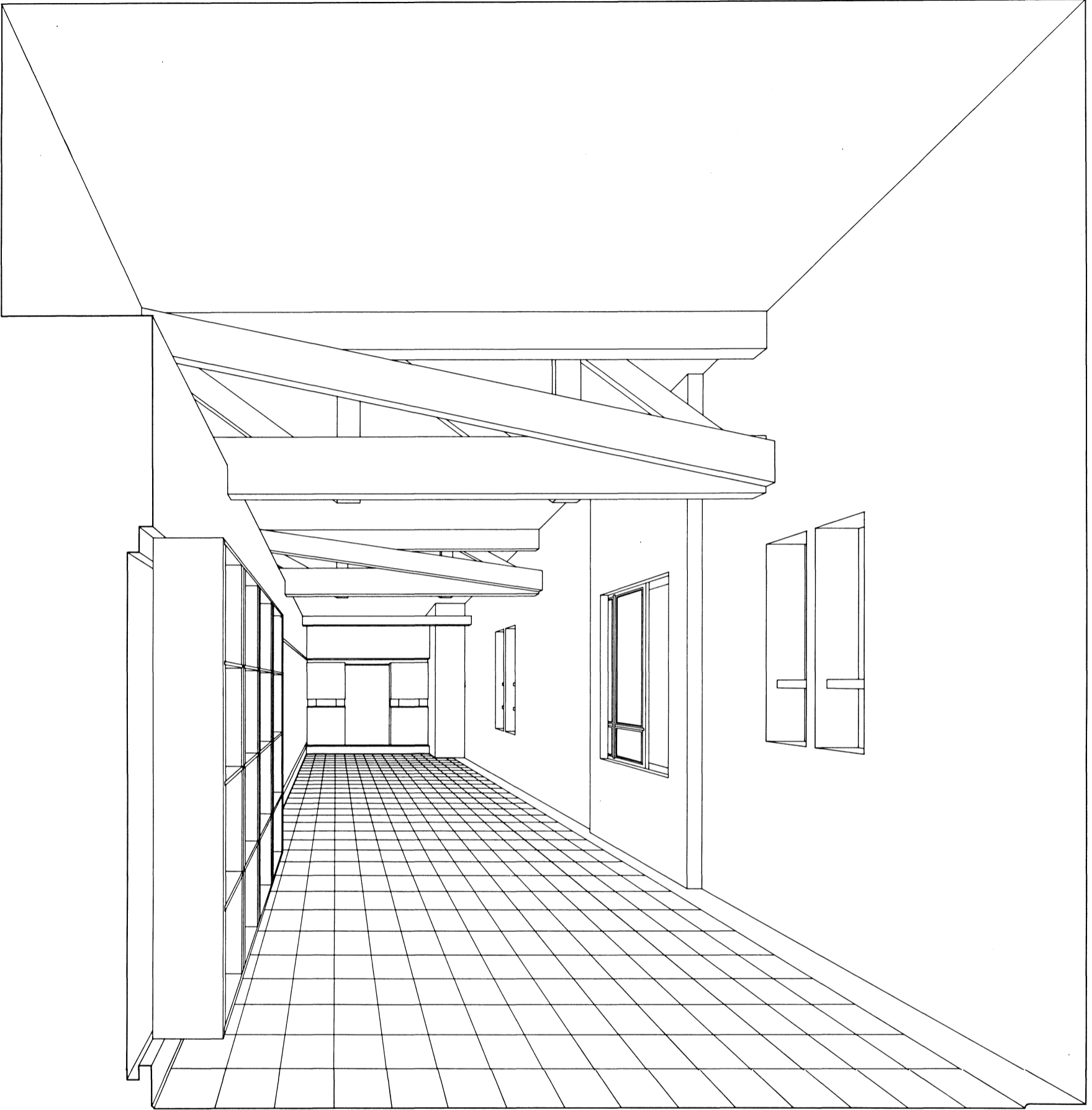
12'-3"

1'-9"



Perspective

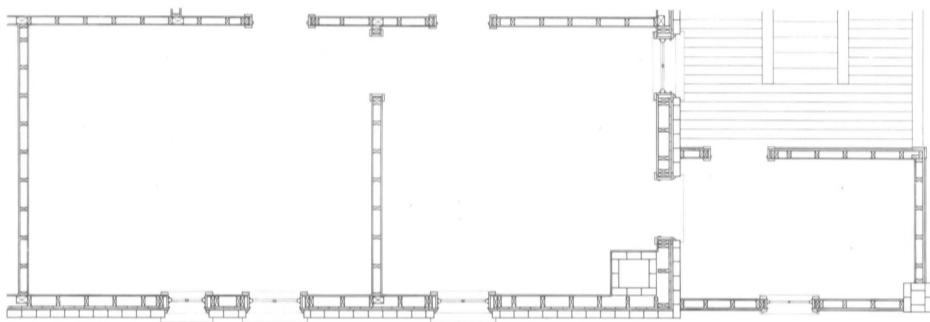
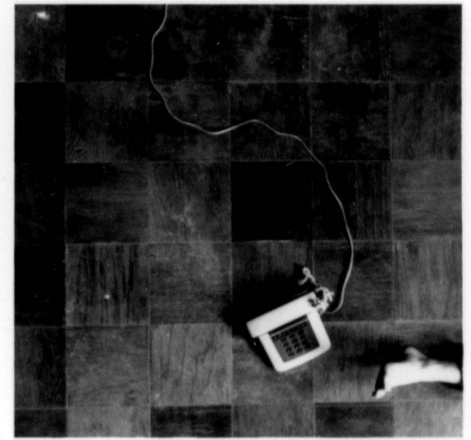
6'-2"



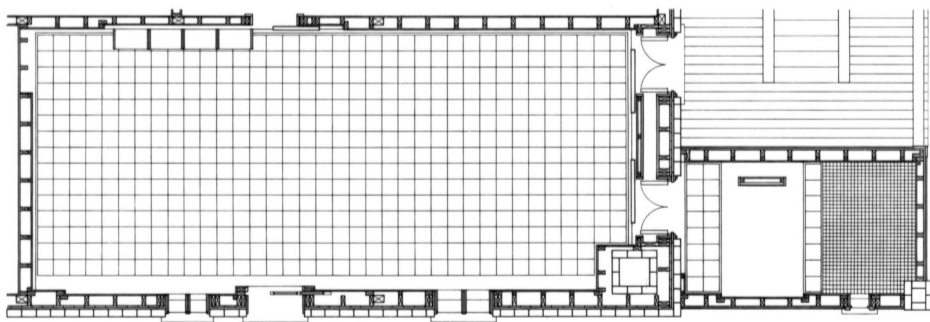
Perspective

1'-9"

12'-3"

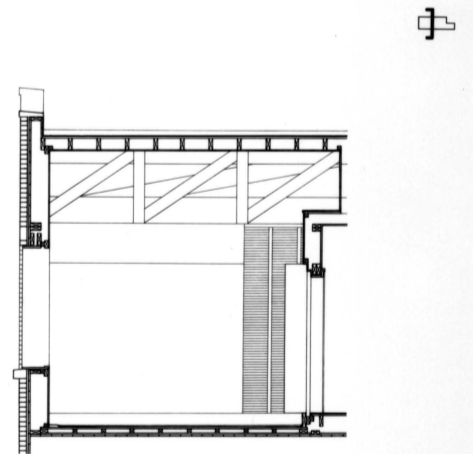
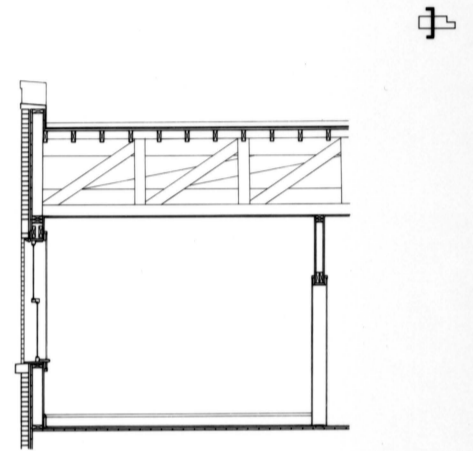
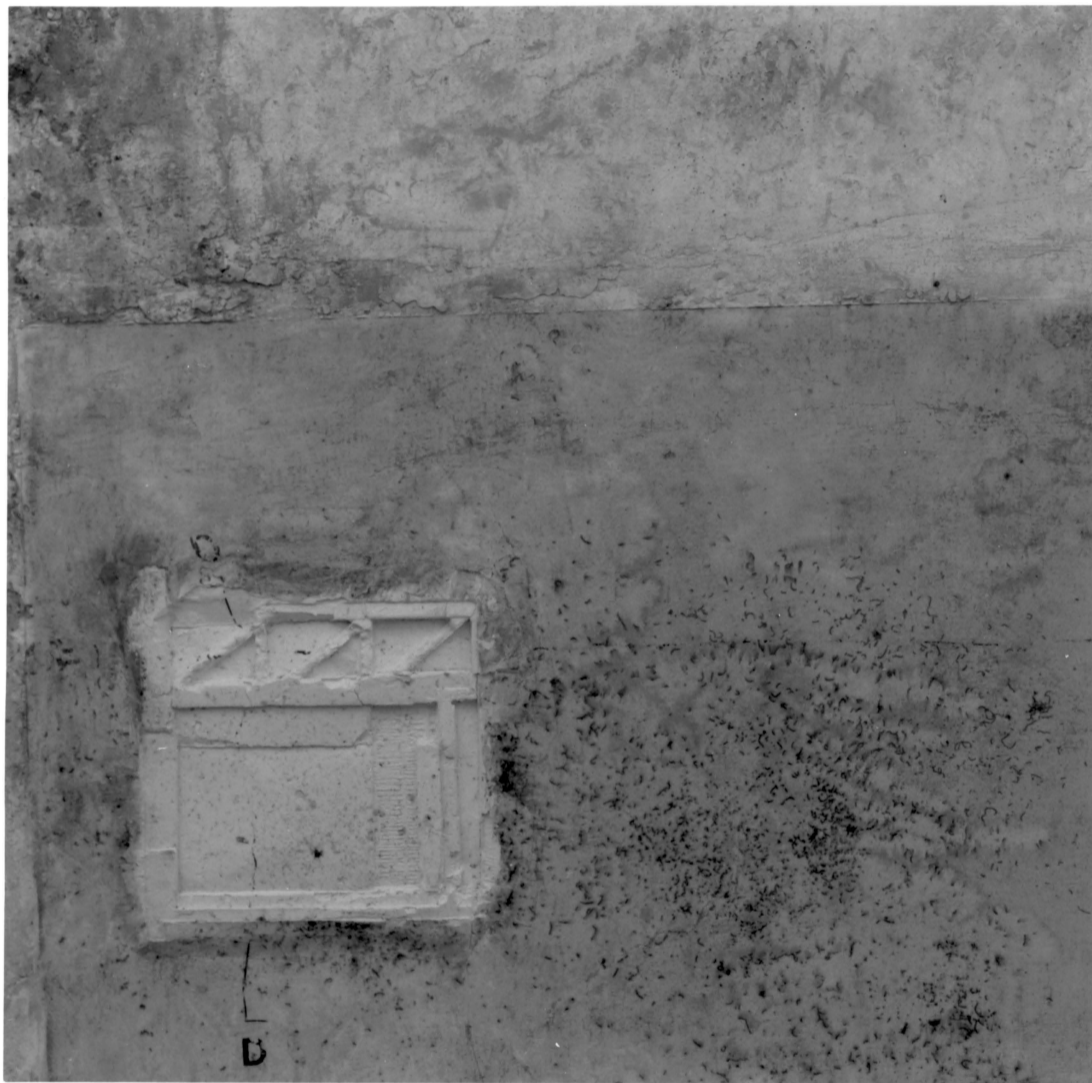


4



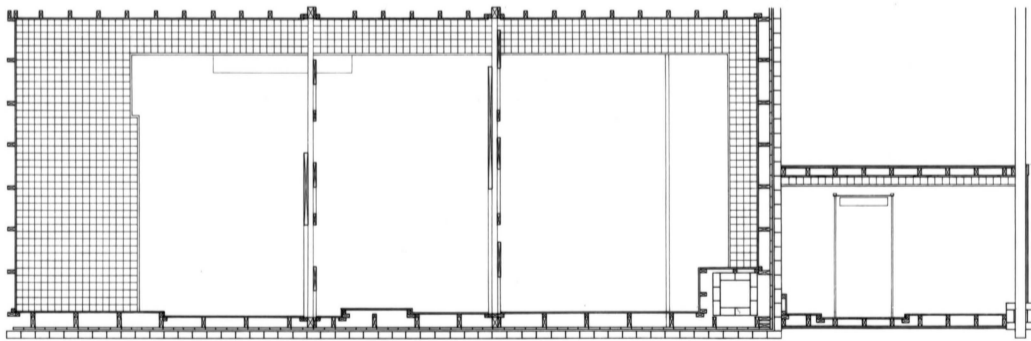
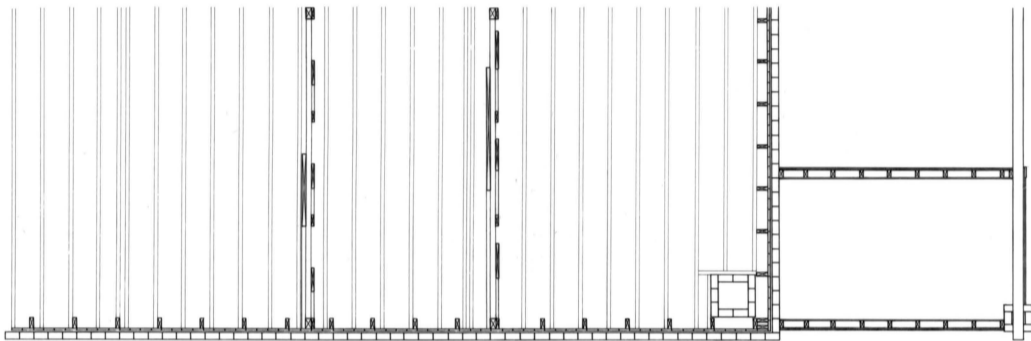
Before
After

28'-0" 2'-6" 11'-0"



Before
After

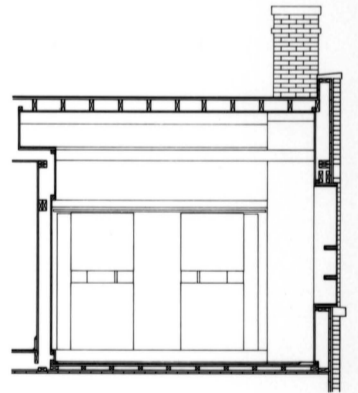
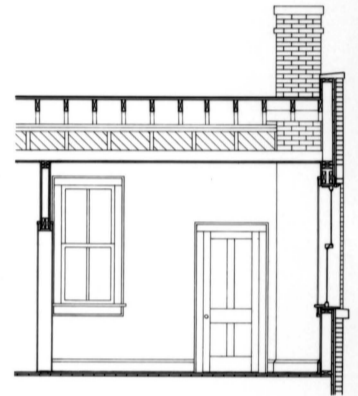
12'-3" 1'-9"



Before

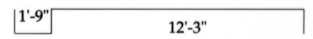
After





Before

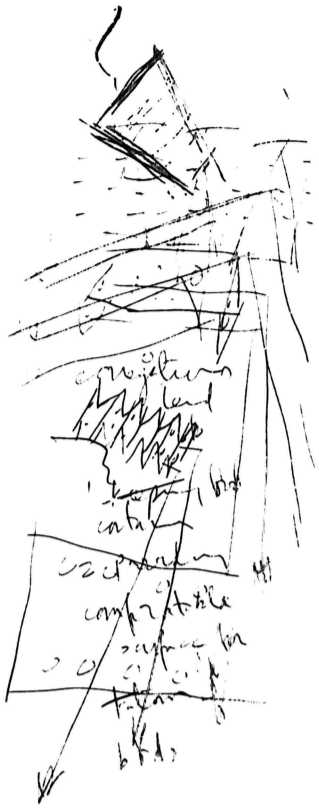
After





Warden

Painted steel, painted spruce, stained red oak (1991)



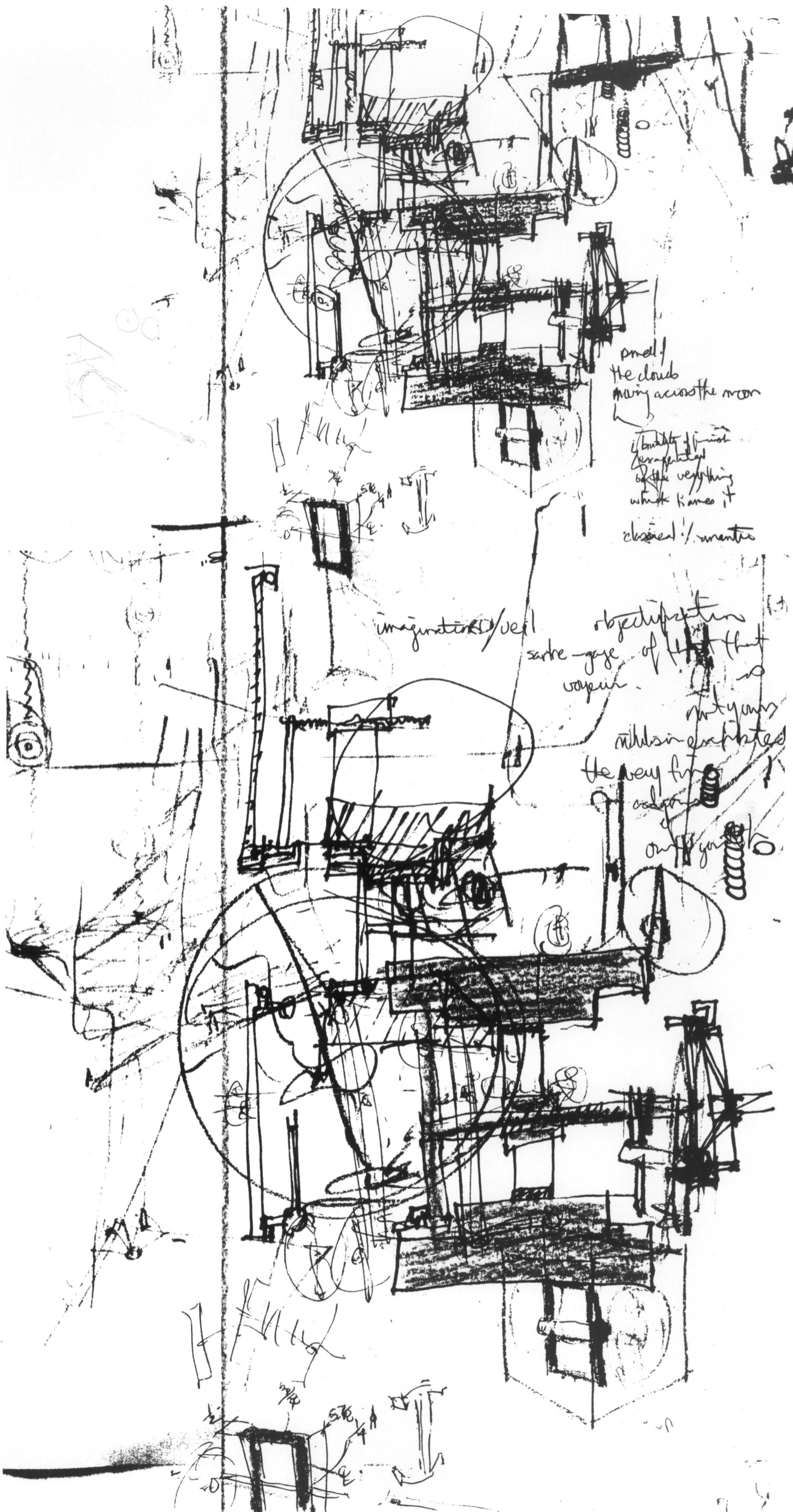
Planasthai

Elevated platform bird feeder (1994)



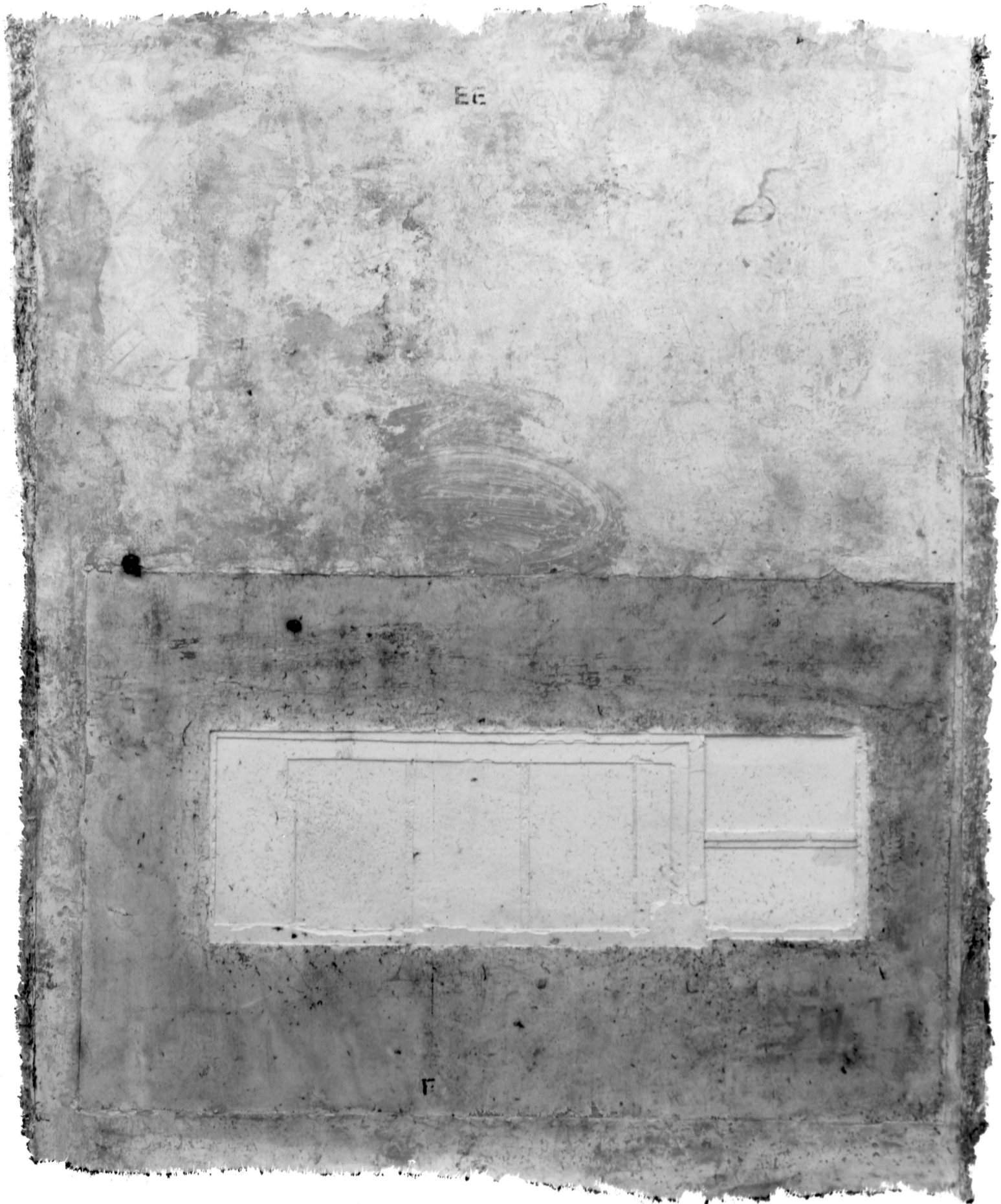
Planasthai

Elevated platform bird feeder (1994)



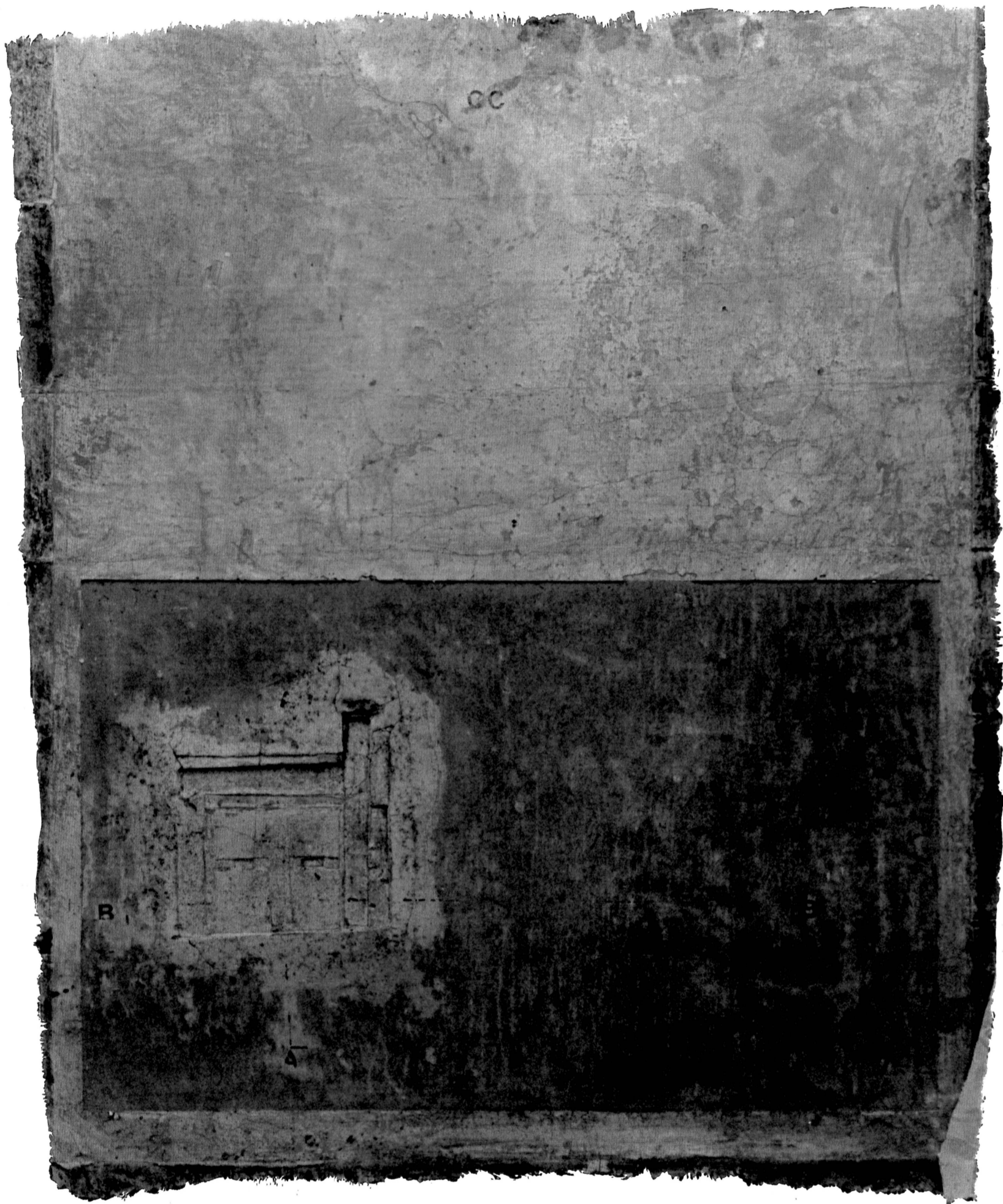
Vindauga

Concrete, steel, acrylic, steel washers, spring, socket type bolts, rubber o-ring, (1993)



Construction

Mixed media, (1993)



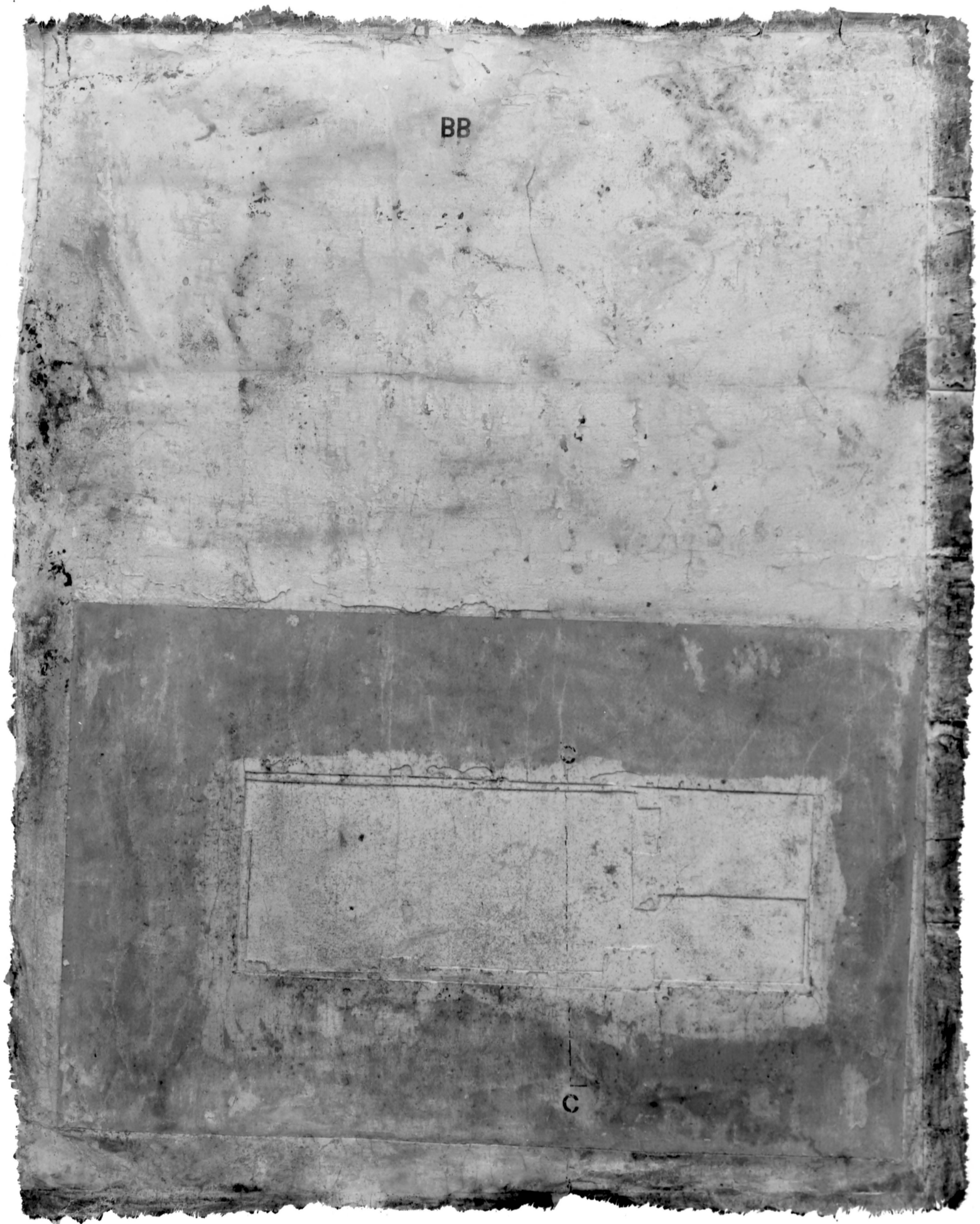
Construction

Mixed media, (1993)



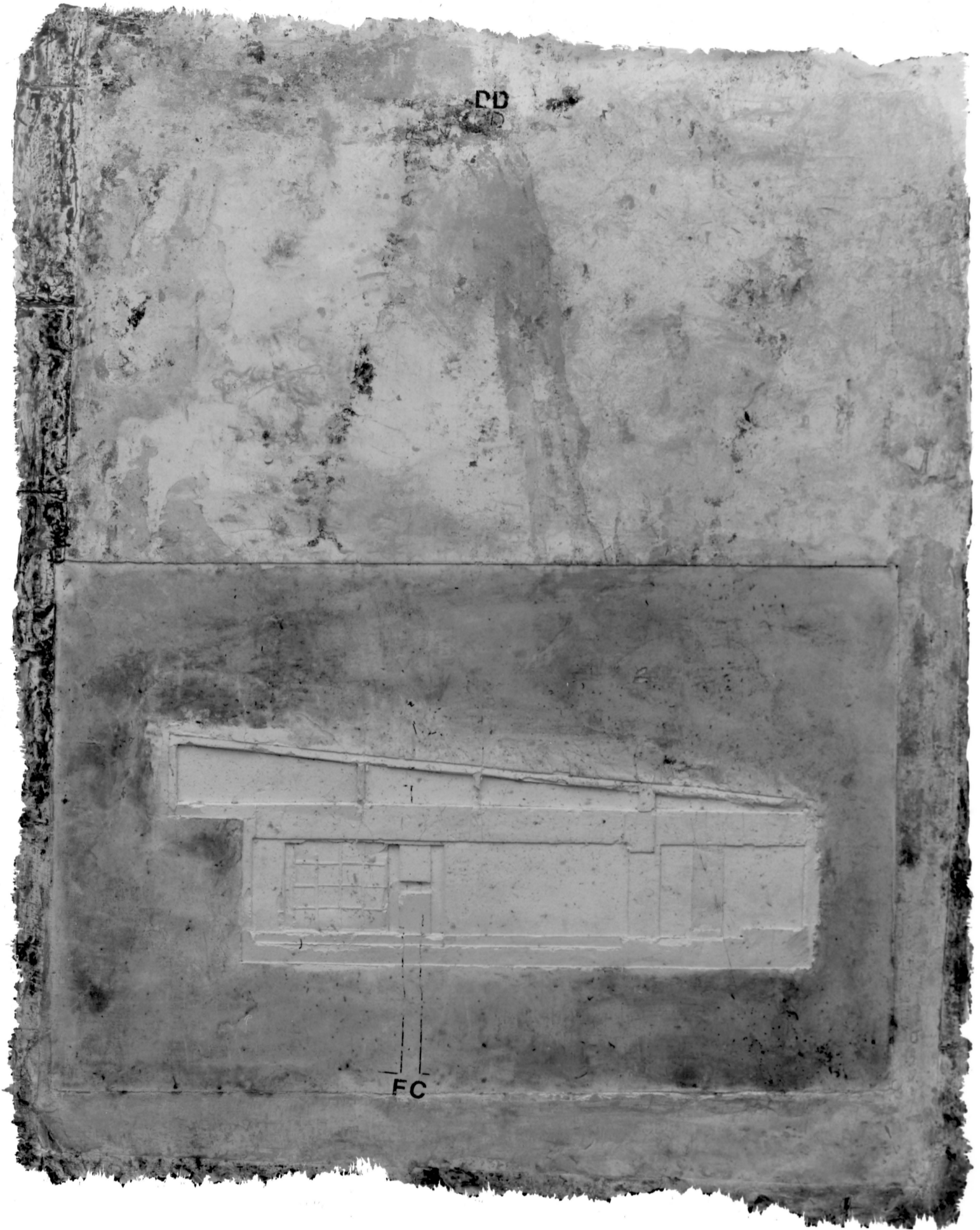
Construction

Mixed media, (1993)



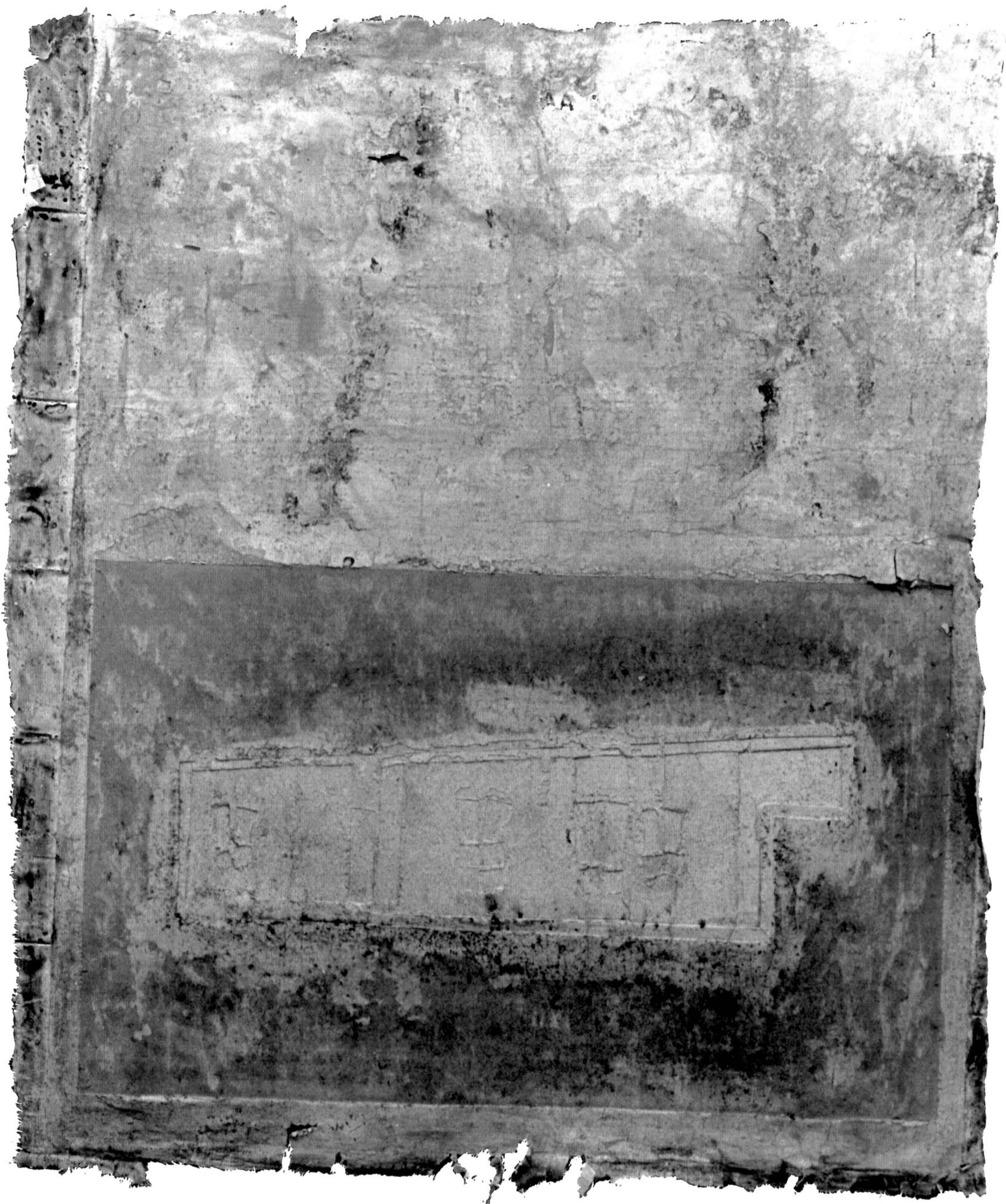
Construction

Mixed media, (1993)



Construction

Mixed media, (1993)



Construction

Mixed media, (1993)