

A
T
H
E
S
I
S

O
F

A
R
C
H
I
T
E
C
T
U
R
E

e d u a r d o d e l g a d o

c.2

LD
5655
V855
1994
D454
c.2

S
E
I
E
O
F
A
R
C
H
I
T
E
C
T
U
R
E

o b x g l e b o b r e a b o

ORDER

cosmic . chaotic

atom .

molecule

cell .

world

solar system .

galaxy

architecture .

world

absolute .

relative

as we move from one dimension to the next

there are cycles from cosmic to chaotic order

each element is part of a bigger one

it can be concluded

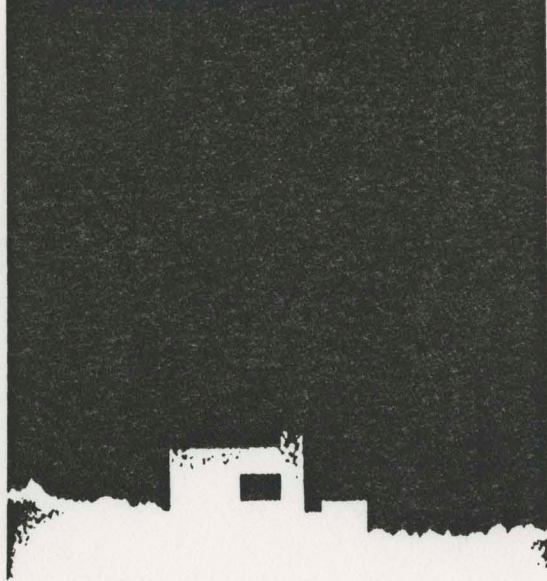
there is a whole to which all things form part

the parts can be seen as articulations of the whole

it makes sense that

the whole which contains all and is not contained

be of cosmic order



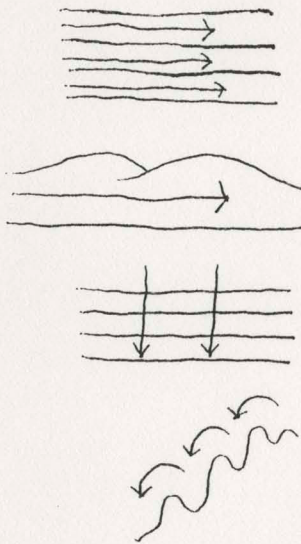
CAPTURING ITS HARMONY ARCHITECTURE

I see architecture as making one both mentally and physically architecture as the element which brings the cosmos together



finding a new interpretation of the whole a new interpretation of reality





the building

the river

how does the river flow
along the grain of the rock
flow is smooth and transitions gradual

plan

section

crossing the grain of the rock
flow is resisted and transitions abrupt

plan

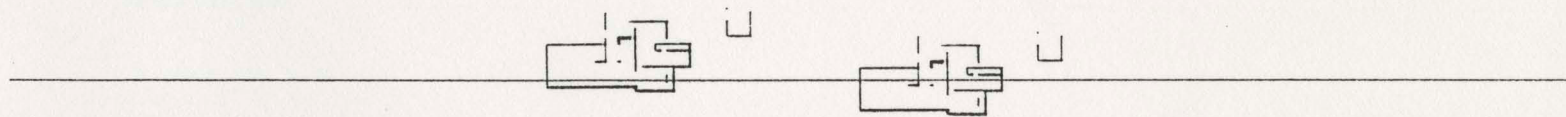
section

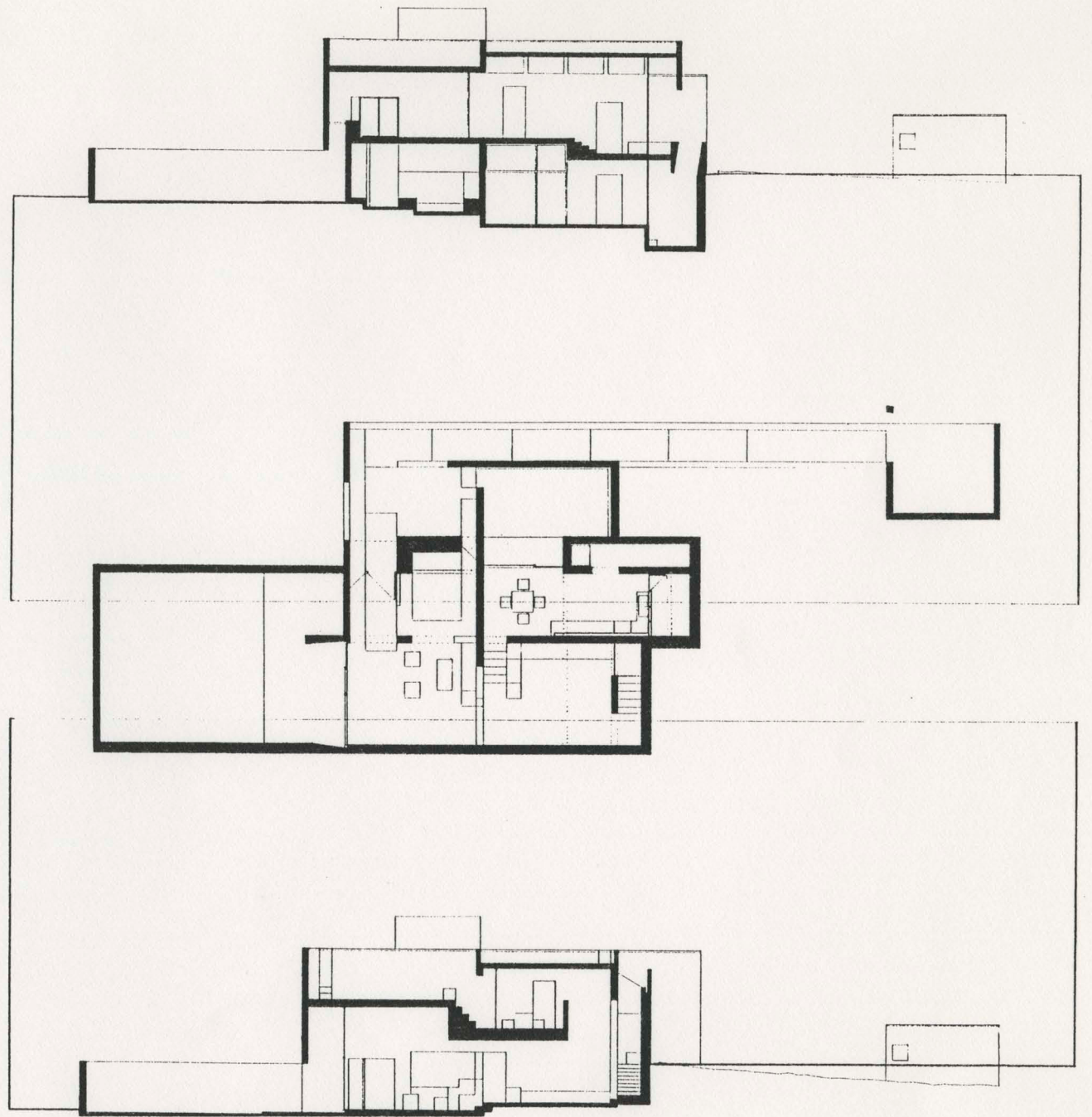
like the building
its walls
the flow

resistance

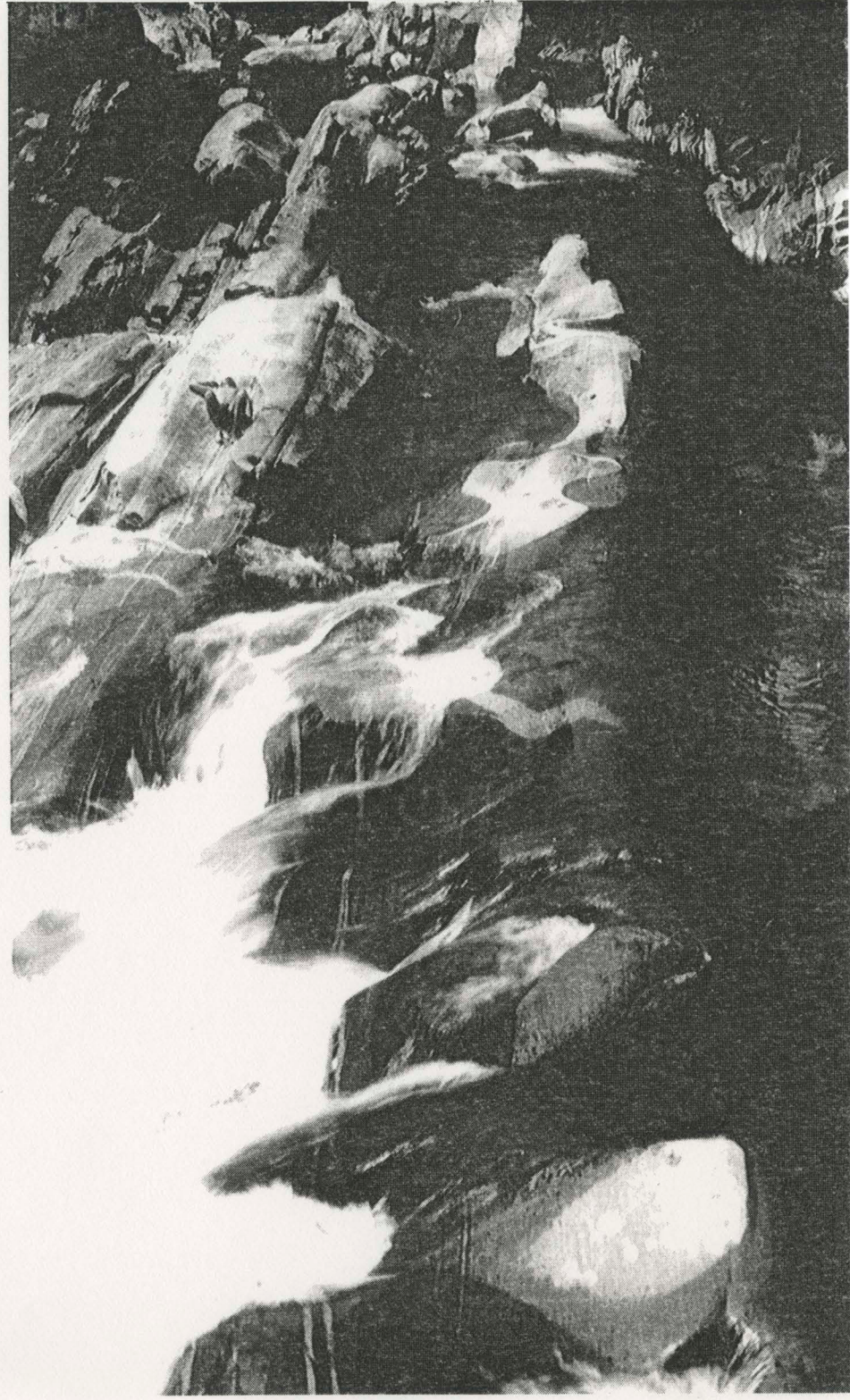


flow along layers gradual transitions

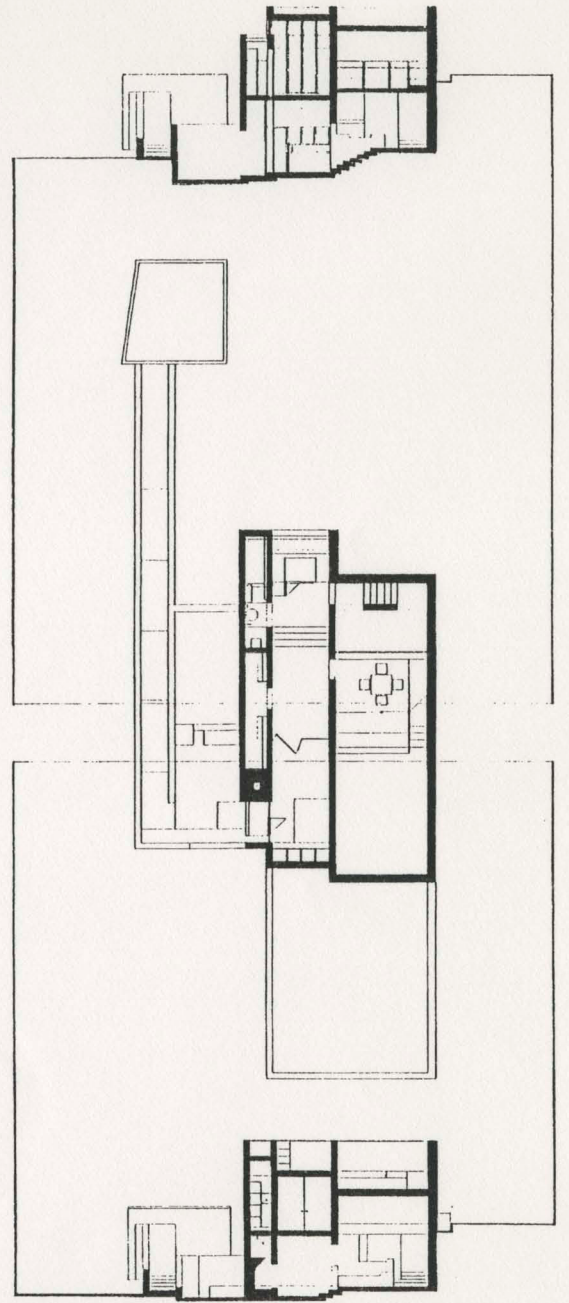


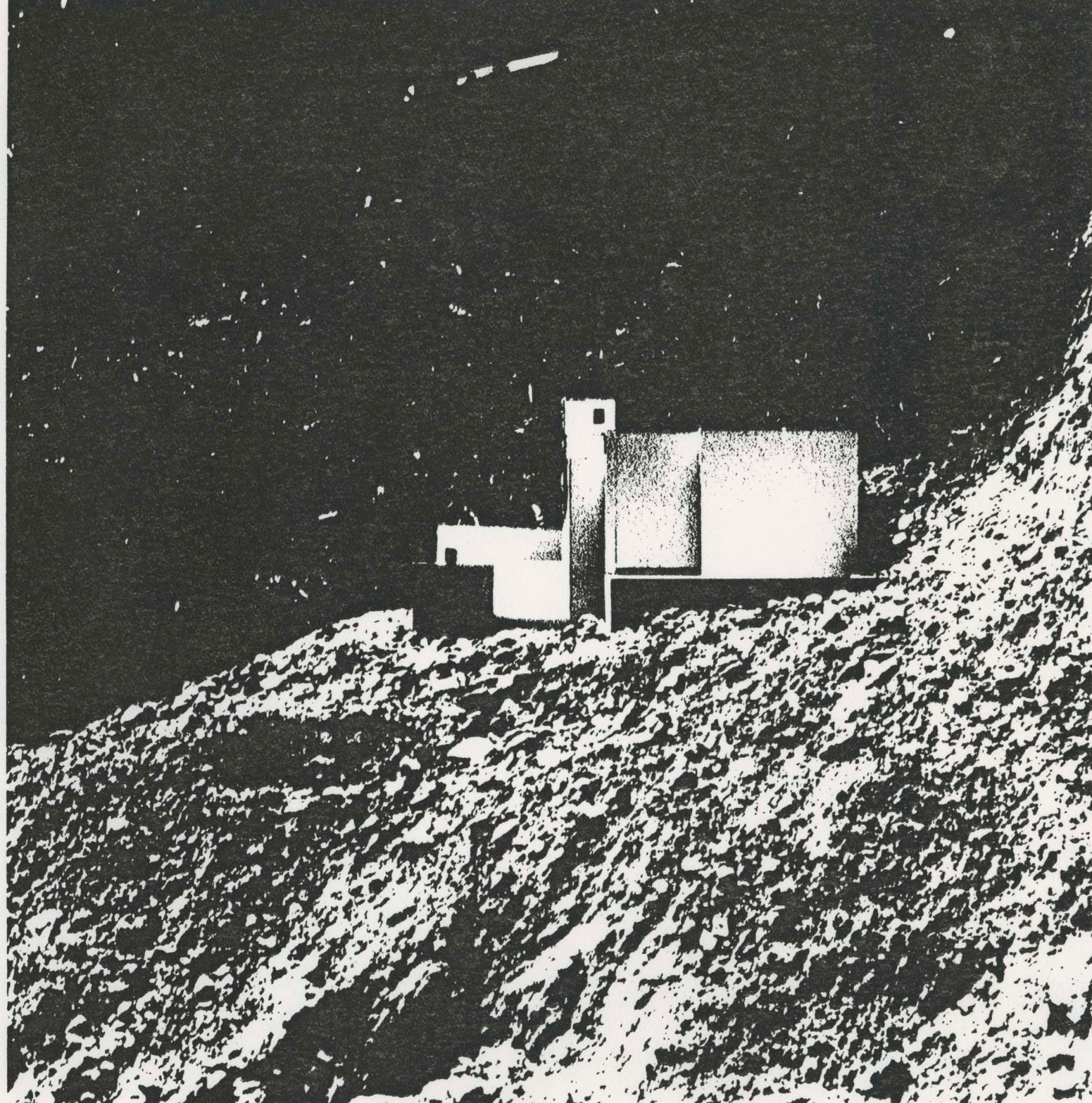


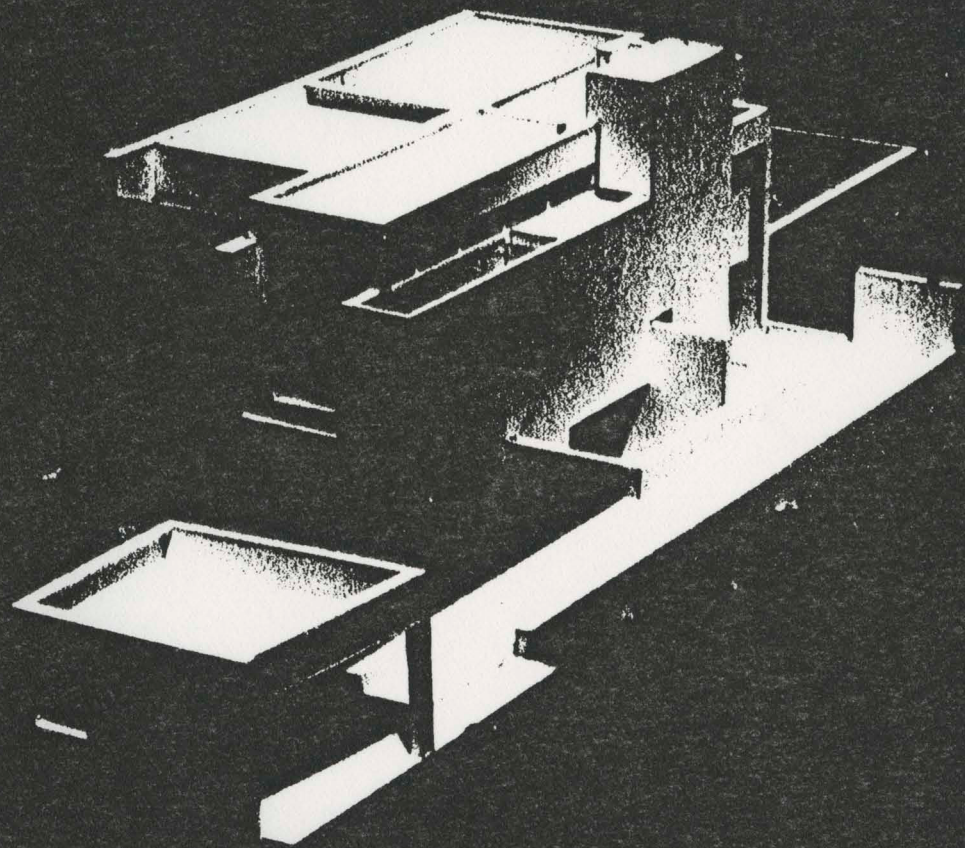
flow crossing layers transitions abrupt

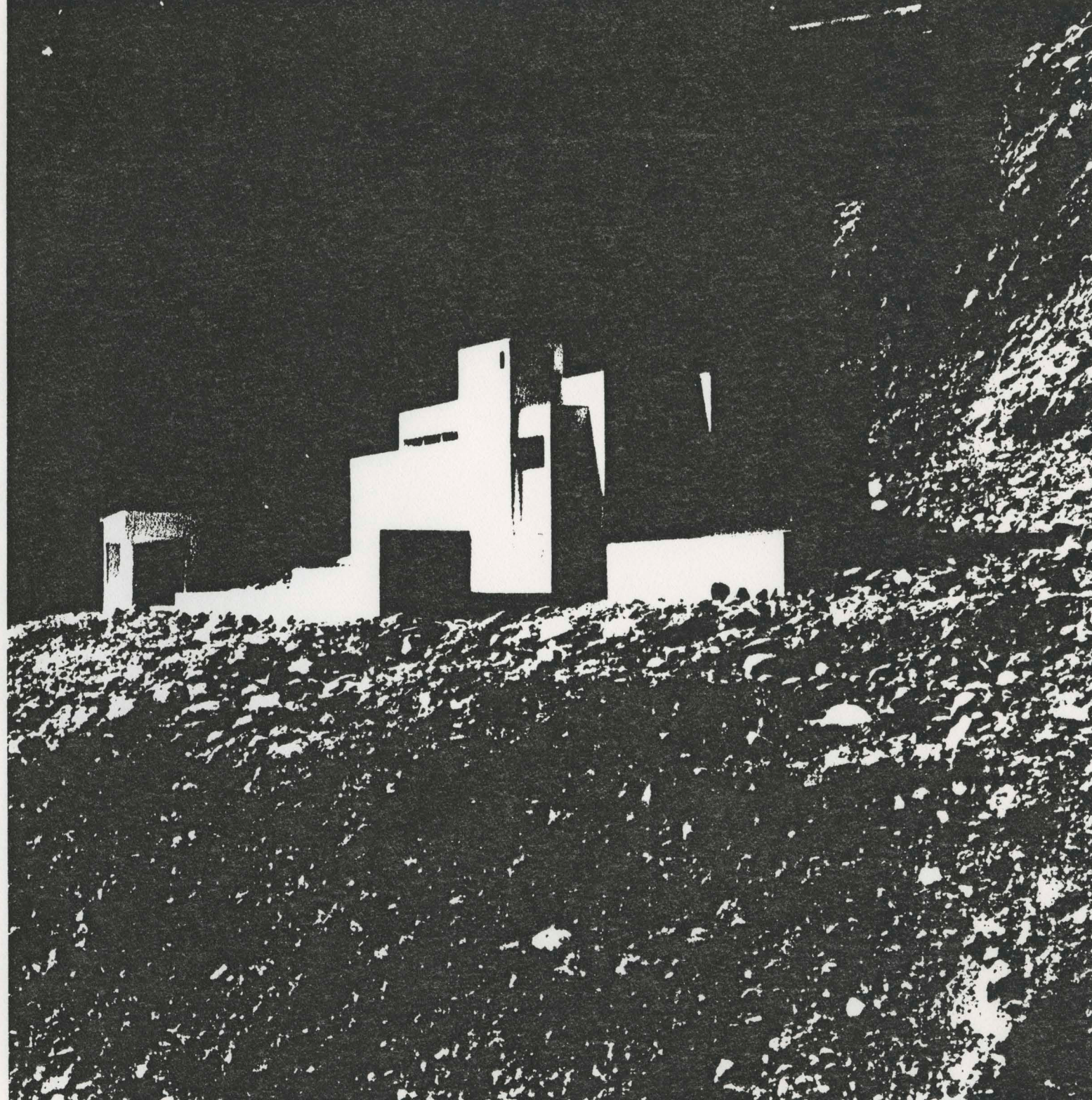








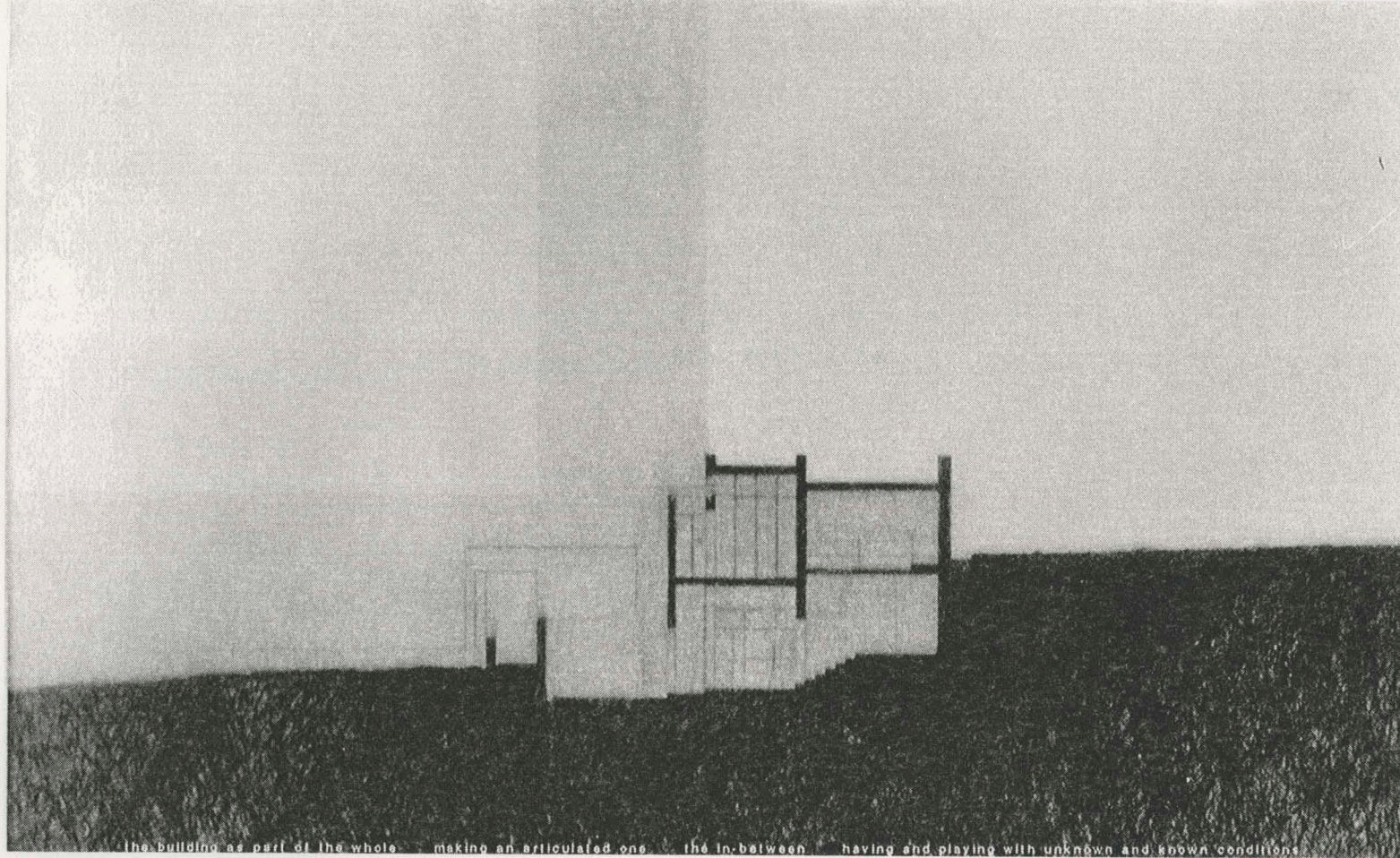




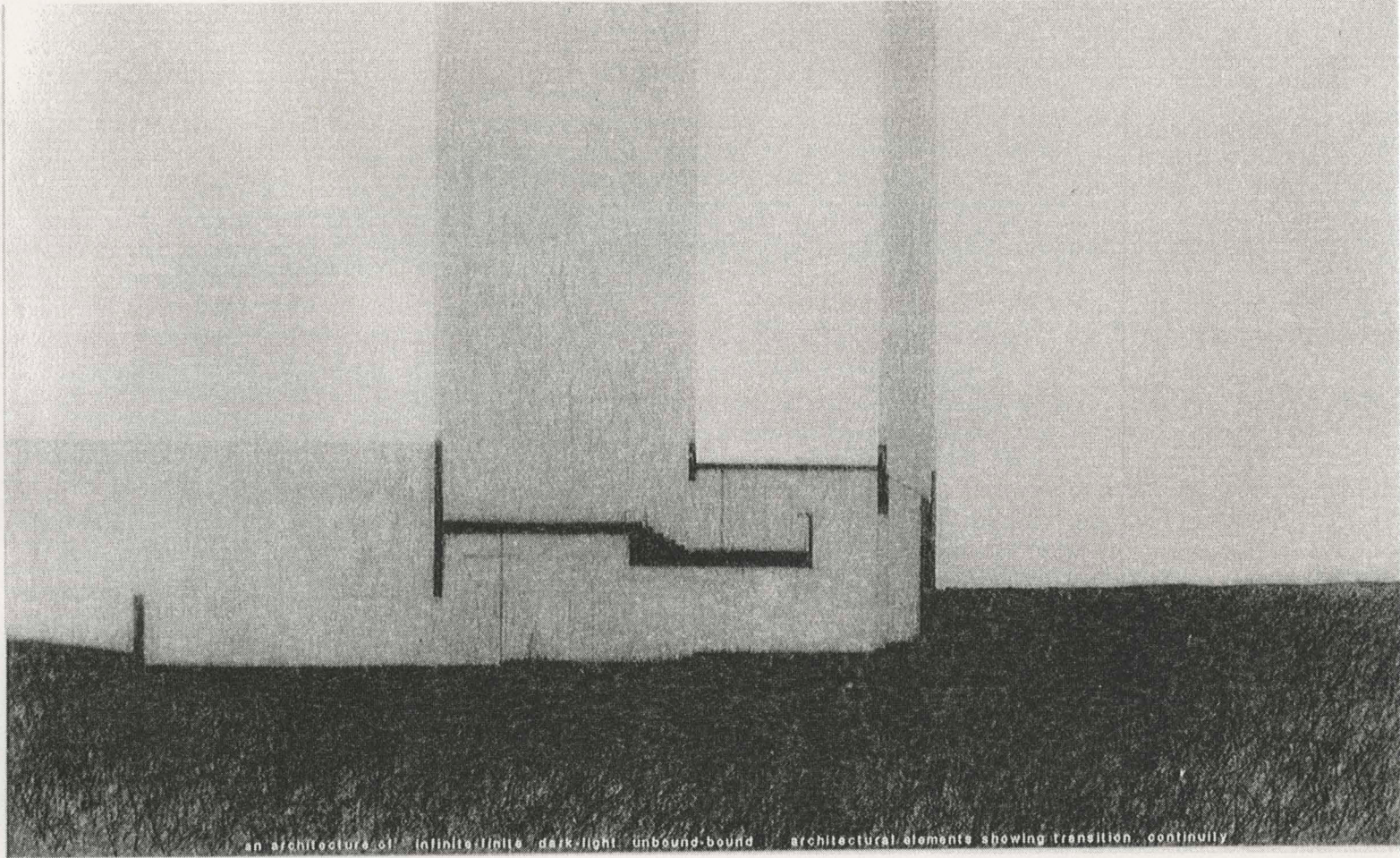
they make architecture

I understand an inner logic of the building
not in terms of tectonics
rather
an inner spirit of the building calling for tectonics
the wall the floor the ceiling having an equal and interchangeable role
interrations of masses and spaces in light
somehow
these relations become meaningful
at that moment

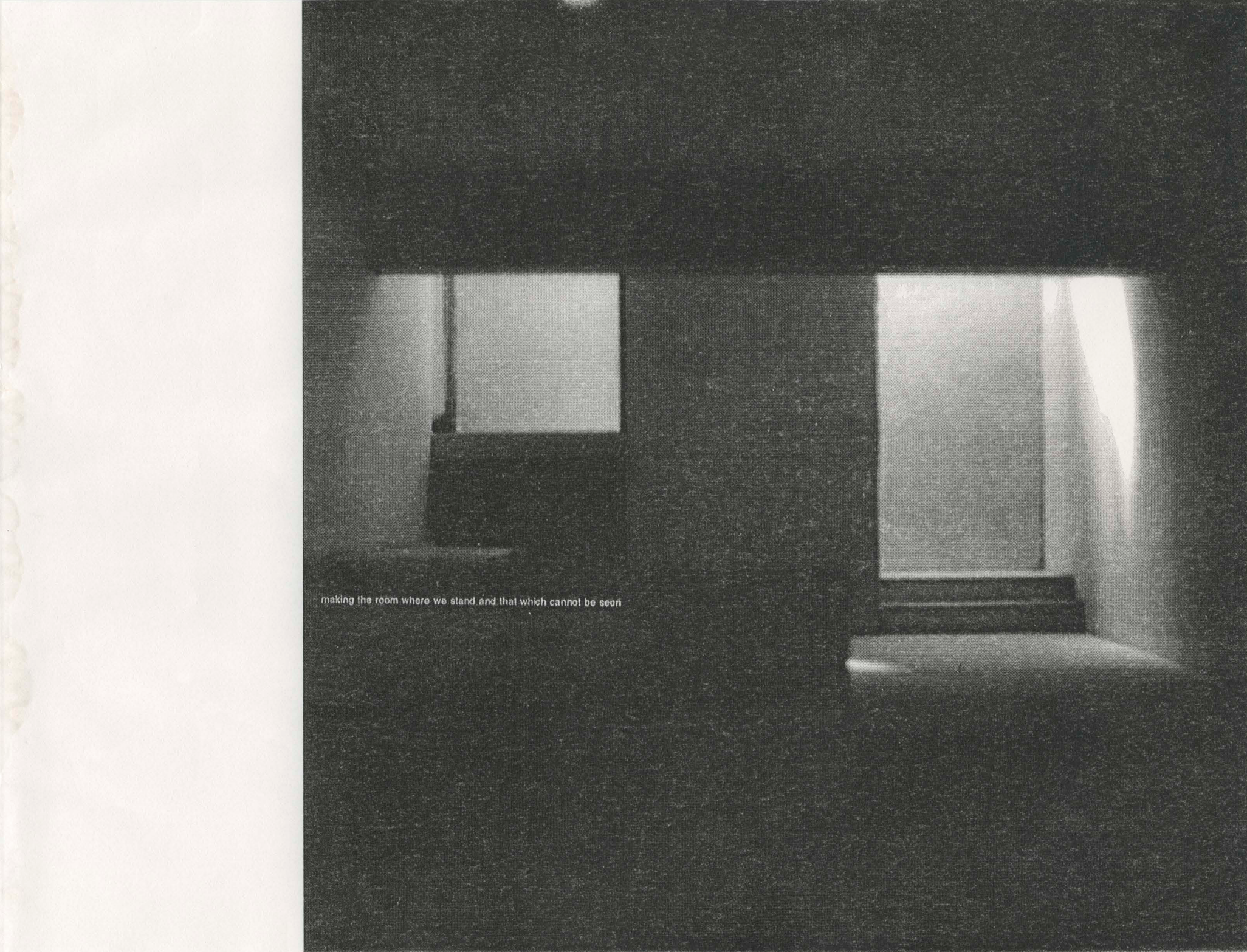




the building as part of the whole · making an articulated one · the in-between · having and playing with unknown and known conditions



an architecture of infinite/finite dark/light unbound/bound architectural elements showing transition continually



making the room where we stand and that which cannot be seen