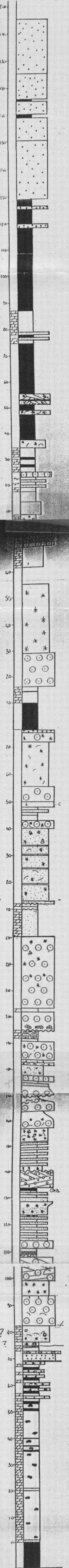


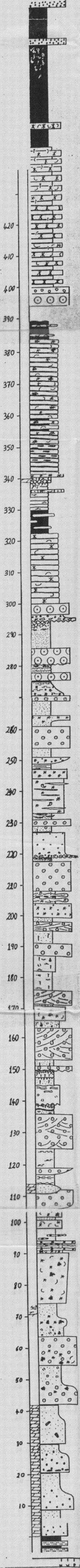
JELICO

PLATE 3:

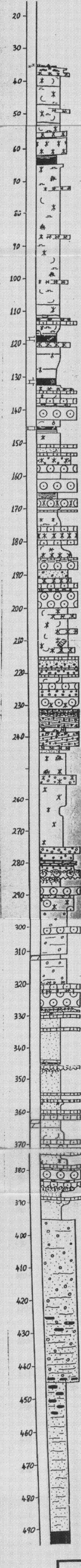
Pine Mountain Sections, Kentucky/Tennessee  
(Sections Measured In Feet, 1" = 20')



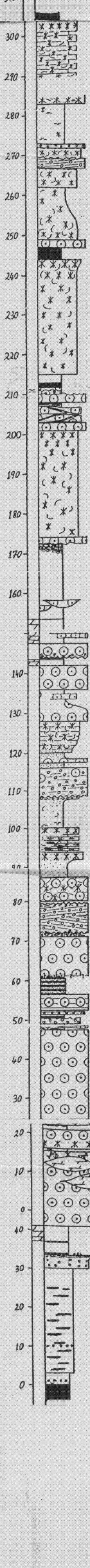
HURRICANE GAP



ELKHORN CITY CORE



HARLAN



SEE PLATE 2 FOR LEGEND

Jellico Section was measured by Nial Toomey for a senior thesis completed in the Carbonates Lab, Virginia Tech.

