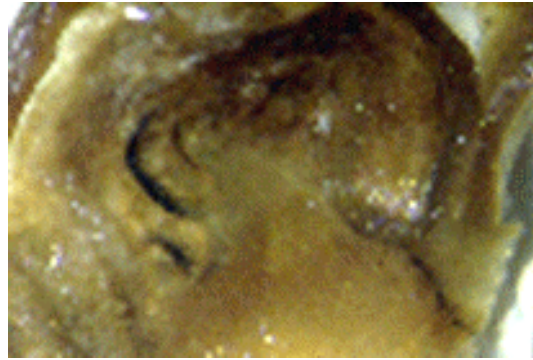
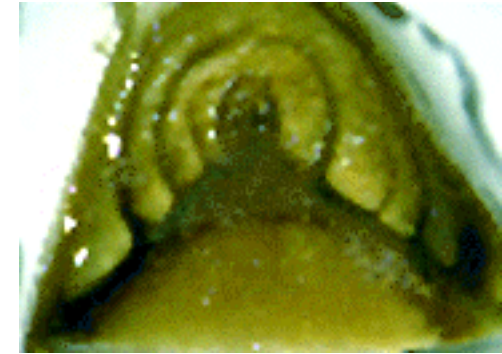




1. no stain or starch deposits observed



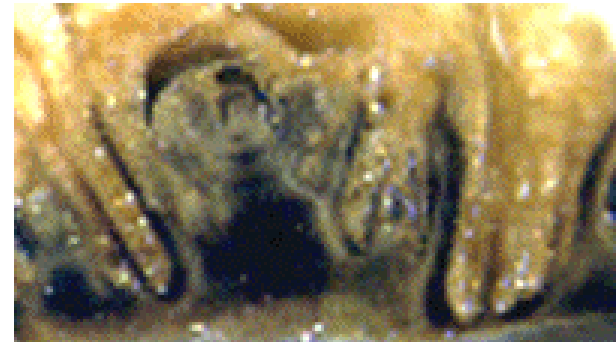
2. a thin layer of stain just below the primary axis on the nodal tissue and some stain on one or two prophylls



3. half of the nodal tissue and more prophylls stained with IKI stain



4. nodal tissue and almost all the prophylls stained with the IKI stain and very little stain on the primary axis



5. the entire nodal tissue, all prophylls, and primary axis stained bluish black

Table 4.1. Visual key for iodine-potassium iodide stain rating for starch in grape cultivars