

ANNUAL NARRATIVE REPORT

COUNTY
EXTENSION
WORK

Virginia Agricultural Extension Service

W. H. Grizzard

Name

County

Title

Agent

B. S. Stump

Assistant Agent

G. W. Nichols (Part-time)

Assistant Agent

Assistant Agent



1961

Isle of Wight

County

TABLE OF CONTENTS

| Subject | Page |
|--|------|
| I. Brief Description of County | 1 |
| II. Change in Situation | 2 |
| III. Development of the County Extension Program | 3 |
| IV. General County Problems, Needs and Opportunities | 4 |
| V. Major Activities | 5 |
| A. Livestock | |
| 1. Hogs | 6 |
| 2. Beef Cattle | 14 |
| 3. Sheep | 16 |
| 4. Dairying | 18 |
| B. Agronomy | |
| 1. Peanuts | 20 |
| 2. Corn | 26 |
| 3. Pasture | 31 |
| 4. Soybeans | 32 |
| 5. Small Grain | 34 |
| C. 4-H Club Work | 34 |
| D. Forestry | 42 |
| VI. Minor Activities | |
| A. Farm and Home Development | 46 |
| B. Watermelons | 47 |
| C. Poultry | 47 |
| D. Soil Samples | 47 |
| E. Civil Defense | 47 |
| F. 4-H Activities | 48 |
| G. Rural Areas Development | 48 |
| H. Miscellaneous | 48 |
| I. Calendar of Work | 50 |

Contents of Plan

I. Brief Description of County

Isle of Wight County is located in the Tidewater area of Virginia, a few miles down and across the James River from Jamestown, first English settlement in America. The county was settled on April 19, 1619 by an Englishman named Christopher Lawne, who brought with him 100 land hungry colonists. The Indians had called the area Warrasquoacke. Lawne changed the name to Lawne's Plantation. In 1634 the London Company gave it the title of Isle of Wight, making it one of the eight original shires of Virginia.

Still standing in Isle of Wight County, about four miles from Smithfield, is St. Luke's Episcopal Church (sometimes called "The Old Brick Church") which was erected in 1632. The Courthouse in Smithfield dates from 1752. The largest portion of the population is descended from the early English settlers and many of the county residents are lovers of tradition and cherish with pride the old buildings, records and relics. Isle of Wight County people are proud of their long history, and on the one hand hold tightly to tradition, while at the same time they are amazingly progressive.

The population of the county has been at a standstill for many years. The first U.S. Census reported 9,028 in 1790 and the total county population rose to 14,906 in 1790 and the total county population rose to 14,906 in 1950. According to the 1950 U.S. Census, only 48 percent of the population is white. Thirty-seven percent of the population is rural farm and 62 percent is rural non-farm.

There are 489 white farm operators and 197 negro farm operators. The U.S. Census for 1959 shows that the average size of farms is 155.1 acres and 41 farms have 200 to 499 acres. The county has a total area of 314 square miles.

The area income, amounting to about six to eight million dollars yearly, is derived chiefly from field crops (peanuts, corn and soybeans) and from livestock and livestock products (chiefly hogs). Isle of Wight County is an important peanut-growing county in Virginia and in the nation, and the hogs raised on her farms provide the nationally known "Smithfield Hams." There are approximately 16,206 acres of peanuts and 30,000 hogs produced in Isle of Wight County.

Next to agriculture, manufacturing employs the largest number of people. Smithfield, the principle town, is a meat-packing center where several plants produce hams, bacon, sausage, lard, and other meat products. The plants do an estimated combined volume annually of more than 25 million dollars. Isle of Wight County has 205,440 acres of land area. The 1959 census shows 51.8 percent or 106,409 acres in farms, 51,476 acres or 48 percent of the farm area is in woodland and 455,730 in harvested cropland. There are 19,637 acres less farm woodland in the 1959 census report than five years ago. There are 99,031 acres in commercial forest, towns and other non-farm uses.

With about three-fifths of the total county area forested, sawmills and wood products are important. In the southwest corner of the county is a large pulp and paper mill. There are also several plants for cleaning and grading peanuts.

Along the Pagan River and the James River men engage in fishing and oystering. Battery Park and Rescue are shipping points for the water freight and harbors for fishing boats.

According to the 1950 Census the median income for Isle of Wight County families was \$2,181; however, 45 percent of the families had incomes of less than \$2,000.

The county has access to rail and water transportation and has a good highway system. U.S. Highways 460, 258, 58, and 17 and State Highway 10 pass through the county.

During the 1959-60 school terms the county operated 11 schools, four for the whites and seven for Negroes. Elementary schools are located at Carrsville, Windsor, Isle of Wight, and Smithfield. Median school years completed is 6.9.

Communities in the county include Rushmere, Smithfield, Pagan Pines, (suburb of Smithfield), Benns Church, Rescue, Carrollton, Battery Park, Longview, Isle of Wight, Orbit, Walters, Zuni, Carrsville, Windsor, and Airport area (near Franklin). Windsor and Smithfield are the main county shopping areas, but the people do their major buying in Franklin, Suffolk, Portsmouth, Norfolk, Newport News, and Richmond.

The recreational activities are mainly under the sponsorship of the public schools, local churches, 4-H clubs and civic organizations. Fishing, hunting and boating areas are plentiful and ocean beaches are within easy driving distance. The nearby cities of Norfolk and Portsmouth afford a variety of entertainment in professional sports, concerts, theatrical productions and points of interest.

The people participate actively in church, civic, rural, homemaking and commodity groups. The County Extension Service office is located in the post office building in Smithfield. Its personnel; the county agent, assistant county agent, home demonstration agent and the office secretary, work with the county farmers, homemakers and young people. The people are reached with an educational program through home demonstration clubs, 4-H clubs, commodity groups and other organizations, and through individual contacts, and mass media, news articles, bulletins, general meetings, demonstrations and circular letters.

II. Changes in the Situation

Overall prices of farm products are lower. Farm expenses remain high, some at a more or less fixed price, others higher and profits are less.

Management and economics are becoming increasingly more important. Planning is now necessary in the farm business. Controlling insects and diseases often is the difference between a profit or loss. More than ever the importance of efficiency and good management is the principle ingredient in farm profits and success. Volume also is becoming more important. This is evident by more small farmers going out of business, or doing off the farm work, or renting additional acreage or farms. A specific evidence of this fact is that three more dairy-men have recently gone out of business, leaving only nine. There were 19 a few years ago.

Twenty years ago farmers did not grow enough corn to feed their livestock. By 1950 the situation reversed to the extent that farmers were producing more than enough corn for livestock and having corn to sell. Approximately 45 percent of the corn produced in the county is being sold at the present time. Therefore, for a number of years corn has been somewhat of a cash crop. The acreage reserve section of the soil bank program has been discontinued, and a feed grain program added. Much of the acreage going into the reserve was corn. The released acreage is going into soybeans, watermelons, and grain. Farmers are decreasing corn acreage because of lower prices and dry summers, and turning their thoughts to other crops, such as grain sorghum, small grain, soybeans, and vegetables, especially watermelons. County farmers are becoming more cautious about the use of fertilizer and the importance of using soil sample results.

Methods of marketing hogs have changed from selling on a strictly weight basis to a grade merit or meat basis.

The general situation of county farmers appears to be no better economically.

III. Development of the County Extension Program

A county program as related to agricultural extension work may be defined as a plan of procedure or a plan of action to help agents in working more effectively with the people of the county. It is a method whereby county extension employees may better accomplish the purpose of extension work "to help people help themselves." The county extension program should include all of the important phases of agriculture and home economics, both with adults and with youth.

County Extension programs to be more effective must be developed with the people.

Effective program planning with the people involves the following steps:

- A. Analyzing the situation, which is nothing more than determining where where people are.
- B. Finding out the problems and needs of the people.

34
72

- C. Setting objectives or determining where they want to go.
- D. Developing methods of attaining objectives - what, how, when, where activities will be carried out.
- E. Evaluating the program periodically.

By following through on this procedure, the interest of the people is aroused and their support is more readily obtained.

A long time program development plan has been projected for Isle of Wight County. Committees have been set up for principle commodity groups. The committees have a membership of three or multiples of three. A rotational system has been adopted where one of the old members will retire each year and one-third of the committee will be new members. This system of one-third retiring has not been strictly followed because of members retiring or resigning for reasons as health, work load and discontinued farming actively.

The groups assisting in program development are commodity groups of the County Agricultural Extension Service Board, namely; forestry, livestock, agronomy, and dairying. These committees have met and suggested activities and projects to be conducted for the year.

IV. General County Problems, Needs and Opportunities

The USDA and State Department Division of Statistics made the following summary with reference to Isle of Wight County: "Isle of Wight County is located in the southern part of the Coastal Plain. In 1959, land in farms totaled 106,409 acres, 51.8 percent of the county's land area of 205,440 acres. According to the 1959 census of agriculture, there were 686 farms which averaged 155 acres in size and \$26,672 in value of land buildings. Land in farms has been declining slowly in recent years. The number of farms has dropped rapidly from the peak of 1,779 enumerated in 1920.

The land is mostly level and is often swampy along the streams. Elevations vary from about sea level to 100 feet. The frost-free growing season averages about 190 days, extending from around April 15 to October 22. Annual precipitation averages almost 48 inches.

Isle of Wight is one of the leading agricultural counties in the State, and is especially noted for its hams, peanuts and watermelons. This county ranks second among all peanut producing counties in the State, and in 1949 was the tenth largest peanut producing county in the United States. Peanuts account for nearly 60 percent of the cash farm income. Hogs are second with about 19 percent of the total.

Other important sources of farm income are milk, grains, poultry, and cattle. Watermelons are also grown on many farms, and Isle of Wight, according to the 1954 census, is the leading county in the State in the

production of this crop. Average yields per acre of corn and peanuts are both considerably above the state averages.

Smithfield is the principle town and is an important meat packing center, where hams, bacon and sausage are processed in large quantities.

Approximately 60 percent of the county's area is wooded, and farms contain about 51,476 acres of woodland with about 71,788 acres owned by commercial lumber companies and other non-farmers.

The county seat is located at the community and post office of Isle of Wight.

The fact that only about one percent of the A.S.C. payments to encourage conservation was used in forestry improvement helps to show how little work has been done in improving farm forests in the county. Since three-fifths of the total county area is forested, there is great opportunity for work by a county extension forestry committee. Of the 205,440 acres, 106,409 acres are farm land, leaving about 63,745 acres (approximately 50 percent of the wooded land) in commercial forest or wood using industries. Approximately 30,000 acres consists of business concerns, corporations, non-farm home developments and towns. This acreage is increasing yearly.

Crop yields are high compared with other counties. Peanuts afford the highest crop yields. However, average crop yields are too far below the yields of many of our farmers in the high yielding bracket. This presents a challenge for members of the county extension agronomy committee.

Livestock producers have not by any means reached their potential. This is particularly true with such problems as raising more pigs per litter and balancing feed rations and gaining a better balance between crops and livestock, livestock markets and better type minerals.

V. Major Activities

There were meetings of the major committees to make plans for 1961. At these meetings the agent gave a report on major accomplishments during 1960 to the committee at the beginning of the meetings. Next the long time plan was reviewed, then the committee selected the important needs and problems that should be worked on this year and considered changes in situation. The committee outlined in general terms how the work should be carried out. The agent used this to develop his yearly plan of work.

The part of the report which follows is a copy of the plan of work as outlined the first of the year, with minor changes, followed by the outstanding results of major activities.

34
72

A. Livestock

1. Hogs

a) Situation and Needs

The number of hogs and pigs sold alive in Isle of Wight County in 1945 was 22,503 head, in 1950 25,433 head, and in 1955 31,759 head. The value of hogs sold increased from \$157,982 in 1940 to \$876,053 in 1950 and to \$1,241,129 in 1955. On January 1, 1959 the State Department of Agriculture estimated 47,000 head in the county. The 1960 preliminary census for Isle of Wight County showed only 525 farms reporting 26,906 head of hogs. The agricultural statistician has indicated that he feels that the enumeration in Isle of Wight was incomplete by a considerable amount and we agree. Another factor influencing the drop in hog number was the declining prices in 1959, with the lowest point in the drop being a 12½¢ market December 14.

Local packers are still buying hogs on the U.S. grade basis with a premium of about 50¢ for the U.S. No. 1 grade. The slaughter capacity of the local packers is greater than the local available hogs produced. Therefore we can expand numbers. However; the large numbers cause lower prices and the lower prices reduce numbers and the cycle continues.

Isle of Wight County is participating in the feeder pig market in a small way. In 1960 farmers consigned 2,274 pigs.

Following are needs to make the hog program a success:

1. One of the most important needs at this time is to increase hog numbers in the county
2. More sows farrowed
3. More pigs raised per litter
4. Desirable meat-type replacement stock
5. Disease control
6. Sanitation

b) Goals for 1961

1. Increase 3000 head above the 1960 census for market
2. Have 200 more bred sows to farrow
3. Have ten percent increase in number of farmers vaccinate hogs for prevention of hog cholera and erysipelas

4. Try to get ten percent more farmers to install or improve farrowing facilities, crates, pens and stalls, following recommendations as to size, use of guard rails, heat lamps, etc.
5. Get 50 farmers to use the herd boar more efficiently
6. Have 50 farmers, particularly those who have numerous visitors, to practice the use of foot baths

c) Extension Methods

1. Planning

- a) Livestock projects were discussed with extension specialists, commercial hog men, and private business representatives.
- b) A number of needs and problems were discussed at the county livestock committee meeting. The committee along with the agent selected and planned projects to be conducted this year.

2. Cooperation with Others

- a) Local veterinarians will speak at the swine school and assist with disease control and sanitation
- b) The Chamber of Commerce will act as sponsor for special events, such as school, shows and tours
- c) Representatives of other agencies will assist with projects.
- d) Purebred breeders will assist with improving quality in breeding stock.
- e) The Tidewater Sales Company will cooperate with disease control, improving both quality and quantity and assist with marketing.
- f) Swine specialists will assist with solving problems in breeding, feeding, management facilities and marketing.

3. Demonstrations

Demonstrations and Teaching Methods

- a) A livestock school will be held in March
- b) A tour will be conducted
- c) One demonstration will show a new combination farrowing feeding floor construction converted from an old barn.

- d) Disease control demonstrations
- e) Feeding demonstrations
- f) Care and management of the herd boar
- g) Demonstrate correct farrowing facilities and management of herd boar
- h) Conduct foot bath demonstrations

4. Publicity

Publicity and Teaching Methods

- a) The livestock school will be publicized by a circular letter, announcements at meetings and through leaders
- b) The tour will be announced at meetings, publicized in newspapers, and by a circular letter.
- c) Encourage farmers to farrow more pigs to finish out or sell as feeders
- d) Encourage commercial producers to use crossbred meat-type gilts and use meat-type boars with Purebred Registration and Certification records
- e) Show larger producers how multiple farrowing will utilize facilities the year round
- f) Assist purebred breeders with production and marketing problems as a means of more available production tested herd boars and replacement gilts
- g) Get more farmers to consider a feeding program with balanced rations and pasture as a source of cheap feed for sows
- h) Sanitation is of utmost importance since hogs are being more concentrated than in the past. Farmers will be asked to use foot baths, keep buildings and lots free from disease, keep facilities clean, use antibiotics and worming agents when needed, use the state disinfecting machine when practical, vaccinate to control cholera and erysipelas and use iron shots to control baby pig anemia when pigs are farrowed on concrete.
- i) Many farmers have available new facilities and equipment. Farmers will be encouraged to consider these and to take advantage of any that will make production more profitable.

- j) Good markets are available for both finished hogs and feeder pigs. Small farmers might supplement their income by producing feeders. Farmers feeding out will be encouraged to sell more than once for better feed conversion and higher prices.
- k) In addition to the livestock school, tours, circular letters, news articles, meetings, bulletins, specialist and personal contacts will be made.

d). Results

This year began with a swine problem resulting from disease outbreak in pigs bought at the November 1960 feeder pig sale. Two farmers in this county were very critical of the condition of pigs they bought in the November sale. One farmer stated he lost \$300 worth of feeder pigs plus his time and feed. This was severe criticism and publicity to the feeder pig marketing project. Prices received at the January sale were slightly lower than previous sales. It was apparent that something must be done. This resulted in a tighter set of disease control rules and regulations for pigs consigned to the sale. Farmers in Isle of Wight County consigned approximately 2000 head of pigs in the feeder pig sales this year.

A county meeting was held in February on swine production and management. The subjects discussed at this meeting were swine feed ingredients, interpreting the feed tag, and formulating rations. The speakers were John H. Carter, Jr., Assistant Extension Animal Husbandman, and J. K. Butler, Livestock Fieldman with Gwaltney, Inc. Sixty-three attended this meeting.

The business of raising hogs was the topic of discussion at a Ruritan meeting in February.

The agent assisted farmers during February in selecting breeding animals at the All-Breed hog sale. At the August All-Breed hog sale the top boar in both show and sale was bred and consigned by a county purebred breeder.

One of our county purebred breeders conducted private sales in February and August. The agent assisted this breeder in selecting 114 animals for the February sale, and 105 for the August sale, and also in the planning and managing of both these sales. Assistance was given to purebred breeders and with these sales in an effort to place more meat-type breeding animals in the area.

A livestock production school was conducted at the Windsor community building on March 15. A local feed company provided lunch for 89 persons. Representatives of six different segments of the livestock industry participated in the school. The agent feels that this school was very successful; there were many

favorable comments. The program was as follows: Problems with Hog Cholera and Erysipelas, Dr. A. C. Rogers, Local Veterinarian; Disease, Prevention and Control, Dr. W. R. VanDresser, Extension Veterinarian; Care, Management and Selection of the Breeding Herd, John H. Carter, Jr., Assistant Extension Animal Husbandman; Increasing Hog Numbers, James K. Butler, Livestock Fieldman; and Finishing Out Litters, John H. Carter. C. T. Barnes, Livestock Grading Supervisor, State Department of Agriculture, discussed economics of livestock grading. A foot bath demonstration was also conducted.

Eight farrowing houses and pig feeding facilities were constructed in the county this year. The disease and sanitation prevention demonstrations with the use of foot baths went over quite well.

One poultry farmer is in the process of converting a 1200 layer house, 20 X 150 feed, into a hog farrowing and feeding facility. The agent has assisted this farmer in selecting two replacement boars and 13 gilts, three for replacement, ten for expansion. The assistant agent and assistant swine specialist have been asked to help plan the conversion of the poultry house to a hog house. This farmer plans to convert one poultry house. If the project is successful he will convert more at a later date.

Three farmers have converted dairy barns into hog farrowing houses. One of these farmers, with a 40 sow operation, has a foot bath at the door so that no one can enter without wading through it.

In May two new swine projects were introduced. One being a project to determine the production cost study of swine. Dr. Kline, Agricultural Economics Department, visited the agents in the heavily populated counties with Barry Carr, a graduate student, to make plans for developing a research study on hog production cost. The agent furnished them with a list of 41 hog producers, categorized into groups as he requested. The names were arranged on the list so that they could be conveniently visited one after the other. The other new program, Swine Herd Health, began in May with a meeting of the district agent, swine specialists, Dr. William VanDresser, extension veterinarian, and the agents. At this meeting the agents were asked to make a survey of disease losses that had occurred in the county other than from hog cholera. Following this meeting the agent talked with three veterinarians to obtain a list of farmers who had encountered heavy losses due to swine diseases. Detailed descriptions of disease losses from five farms were sent to the extension veterinarian. Four days were spent standing beside meat inspectors at a packing plant in Smithfield, tabulating condemnations of animals due to diseases and parasites, chiefly condemnations of livers due to parasites. Condemnations of livers of Isle of Wight County hogs ranged from 16 to 20

percent inedible. Condemnations from Southeastern hogs ran as high as 37 percent inedible. Western hogs ran as low as seven percent inedible. An 18 month record of inedible livers from the total hog kill from one of the plants was obtained. Also a 30 day list of all condemnations from a Smithfield plant was obtained from the inspector in charge. All of the information resulting from this survey was sent to the extension veterinarian who summarized this data, a copy of which is attached.

The county livestock committee met in the extension office on September 14 to discuss county hog problems. Prior to this meeting the agent had advised committee members that this meeting would be held in connection with the herd health program. The subject was discussed in detail with the livestock committee chairman before the meeting. After the meeting was planned and before it was held, the agents participated in a district workshop on Group Dynamics and Rural Areas Development at Virginia Beach. As a result the county meeting was conducted in the manner prescribed at the workshop. At the beginning of the meeting the district agent made a few remarks with reference to the county people identifying their own problems. Others attending the meeting to observe were Dr. VanDresser, Roie Godsey, extension swine specialist, M. P. Lacy, program development leader, and the agent and assistant agent. The chairman asked each of the seven members of the livestock committee present to discuss county problems as he saw them. The committee asked the agent to make a survey to determine problems and needs of county farmers and those who desired assistance with their problems. Those attending this meeting stated it was very successful. It was decided to have community meetings about the county with the local member of the livestock committee acting as chairman. Three of these community meetings have been held with an average attendance of eight. The purpose of these meetings is for those attending to identify swine problems in their community and in the county. The agent feels that these meetings are accomplishing the purpose for which they were planned, as people are discussing their swine problems.

In January the following was mailed to farmers under Outlook for 1961: "It has been predicted that hog prices will be high for several months. The 1960 pig crop decreased eleven percent. The 1961 spring crop could be six percent increase above 1960, as indicated by farmers' reports of sows to farrow. As the supply increases, prices will decline. The record supply of beef and lambs will also tend to lower the prices of pork. As retailed prices of beef and lambs decline consumers will tend to eat more beef and less pork. It pays to practice sanitation with livestock to prevent outbreaks of diseases and parasite infestation. Pigs should be vaccinated for control of cholera and parasites controlled with chemicals. Lambs should be docked and castrated for higher prices and faster gains."

34
72

In April the following was sent to county farmers on feeding hogs: "it is more economical to feed hogs a balanced ration using correct amount of protein according to weights of the feeders. Sanitation is of the utmost importance since hogs are being more concentrated than in the past. Keep buildings and lots clean. Use a foot bath disinfectant to prevent spread of disease by visitors or from lot to lot on your farm. Vaccinate to control diseases. Give iron shots to control baby pig anemia when pigs are farrowed on concrete. In managing the herd boar keep the boar in a lot to himself and bring the sow to the boar. If you would like to go on a hog tour visiting hog farms in surrounding counties, let me know."

Assistance was given specifically in selecting hogs for the second annual market hog show. A county purebred breeder received the following honors at the second annual market hog show: First place in the truck load pen of ten, reserve champion individual in the single class, grand champion pen of three, and third place in the carcass division.

Assistance was given the Hampshire Swine Breeders Association in planning for their summer sale which was held in this county.

A planning meeting has been held in connection with a commercial gilt and spotlight sale for this area.

Arden N. Huff, assistant extension animal husbandman, was in the county to assist with a livestock judging school and again to assist with planning the Junior Market Hog Show.

The District Junior Market Hog Show, held in this county for several years, was without a sponsor. It appeared that the show might be discontinued. The agent believes the show is still beneficial as a feeding and management demonstration, and of good meat-type animals. The chairman of the livestock committee of the Smithfield Chamber of Commerce thought enough of the idea to encourage the Chamber to sponsor the show to the tune of \$125 prize money. Two adjoining counties expressed the desire to participate in our show. The local Chamber agreed to this. Arden Huff was in the county December 2, 1959, to meet with the agriculture teachers and agents from the three counties, and a representative from the Smithfield Chamber of Commerce. The show was quite successful. There were 201 animals exhibited by 32 exhibitors from the three counties.

Some farmers still maintain there is not any profit in hogs even with the high market that is being experienced at this time. There is quite a bit of controversy about profits derived from finishing swine. A number of swine feeding demonstrations have been conducted. Following is a demonstration showing the results of two lots of hogs on the same farm:

34
72

Pen No. I

43 hogs bought @ 66 lbs. each - 26¼¢ per lb.

| | |
|--------------------|---------------|
| Total cost of hogs | 752.07 |
| Total Feed cost | <u>645.10</u> |
| Total Cost | \$1,397.17 |

| | |
|--------------|-----------------|
| 43 hogs sold | 1,467.16 |
| Cost | <u>1,397.17</u> |
| Total Profit | \$ 69.99 |

Profit per head - \$1.62

Feed Included - 302 bushels corn
2700 lbs. hog balancer
50 lbs. molasses
(cost for vaccinating not included)
Corn figured at \$1.40 per bushel
These hogs were fed for three months.

Pen No. II

42 hogs bought @ 45 lbs. each - 26¼¢ per lb.

| | |
|--------------------|---------------|
| Total cost of hogs | 500.85 |
| Treat Pigs | 28.00 |
| Total Feed | <u>771.45</u> |
| Total Cost | \$1,250.30 |

| | |
|-----------------------|-----------------|
| 41 hogs sold (lost 1) | 1,492.22 |
| Cost | <u>1,250.30</u> |
| Total Profit | \$ 241.92 |

Profit per head - \$5.90

These hogs were fed for four months.

This demonstration shows a number of things. Very little profit is made from hogs if all the feed and animals are bought, particularly if the animals are heavy. The only difference in the two lots was size of feeders. The No. I pigs were bought for \$11.93 per head. The No. II or heavy feeders were bought for \$17.49 per head.

A purebred breeder in the county attended the National Hampshire Meat-Hog Conference at Springfield, Ohio, and purchased a boar from the top ten for a herd boar. The boar, named The Falcon, was bred by A. Reubin Edwards of Middletown, Missouri, farrowed February 2, 1961. His sire was Magnifier PR-449 - 797125 CM CMS. His dam was Miss Desire PR 4518 - 1932958.

The agent assisted farmers in selecting quite a number of boars and gilts for breeding stock for private sales, extension

Agricultural Extension Service
of the
Virginia Polytechnic Institute
Smithfield, Virginia
March 1, 1961

Gentlemen:

We have made plans to have the Isle of Wight County Livestock Production school March 15. The school will be held in the Windsor Community Building and will begin at 10:00 a.m. Free lunch will be served.

Return the enclosed card by Tuesday, March 7, if you will be able to attend.

The program for the meeting is as follows:

- | | |
|---|---|
| Problems with Hog Cholera & Erysipelas | Dr. A. C. Rogers Local Veterinarian |
| Disease, Prevention & Control | Dr. William VanDresser Extension Veterinarian |
| Discussion | |
| Lunch | |
| Care, Management & Selection of the Breeding Herd | John Henry Carter, Assistant Extension Animal Husbandman |
| Increasing Hog Numbers | James K. Butler Livestock Fieldman |
| Packers Viewpoint | |
| Finishing Out Litters | John Henry Carter |

Sincerely,

Walter Grizzard

Walter Grizzard
County Agent

rhr

37
72

Agricultural Extension Service

of the

Virginia Polytechnic Institute

Smithfield, Virginia

June 5, 1961

Dear Farmer:

WHY GROW MORE HOGS? TO BOOST YOUR INCOME!

Have you thought about the possibility of growing more hogs to increase your income? Other reasons for growing hogs are:

1. The market price is high.
2. Good local markets are available.
3. The demand is great.
4. Large numbers of market hogs are brought in from other states to supply our market demands.
5. Corn is more profitable sold through hogs on today's market.

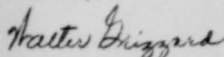
Those of you who attended the 100 bushel corn club banquet will remember J. H. Carter, Assistant Swine Specialist and Kenneth Loope, Extension Economist, giving figures on the value of corn fed through hogs. (See Enclosure).

If you were one of those present at the livestock school in Windsor in March, you will remember the information on swine sanitation, problems with cholera and erysipelas. You will remember also that we discussed methods of increasing hog numbers, care and management of both the breeding herd and animals for market. If you did not attend, you missed a very good schooling on swine management.

On today's hog market with the price of grain as it is there is profit in growing hogs even if you buy the grain. You can increase hog numbers to provide the desired income. This may be done by farrowing more sows, using management practices that will result in raising more pigs per litter, providing strict sanitation for disease and parasite control. (See Encl.)

Selection and type improvement are still important. However, the larger number you have the more from which you have to select. Select your best gilts for replacement sows and then go all out for the right kind of boar.

Sincerely,



Walter Grizzard
County Agent

rhr
Enclosure

An Educational Service of the Virginia Polytechnic Institute in Cooperation with the U. S.
Department of Agriculture and County Governments

The following table illustrates 4 different levels of production with the 2-litter system. Others can be added.

| | Number of Sows | Number of Sows Farrowing Per Group | Month | | | | | | | | | | | | | |
|----|--------------------------------|--|-------|---|---|---|---|---|---|---|---|---|---|---|---|---|
| | | | J | F | M | A | M | J | J | A | S | O | N | D | | |
| 1. | 24 sows - 1 group - 2 litter | 24 | X | | | | | | | | | X | | | | |
| 2. | 48 sows - 2 groups - 2 litter | 24 | X | X | | | | X | X | | | | X | | | |
| 3. | 72 sows - 3 groups - 2 litter | 24 | X | X | X | | | X | X | X | | | X | X | | |
| 4. | 144 sows - 6 groups - 2 litter | 24 | X | X | X | X | X | X | X | X | X | X | X | X | X | X |

Farrowing

1. Dry pigs and dip navel cord in iodine.
2. Clip needle teeth and ear-notch.
3. At three days of age give iron shots if confined.
4. Start creep feeding pigs at 10 days of age.
5. Castrate at 2 weeks.
6. Vaccinate against cholera at 6 weeks.
7. Wean at 6 to 8 weeks.
8. Worm at 10 weeks.
9. Keep the farrowing pen clean and dry at all times to prevent scours and many other diseases.

WALTER GRIZZARD
COUNTY AGENT

34
72

Agricultural Extension Service

of the

Virginia Polytechnic Institute

Smithfield, Virginia

June 26, 1961

Dear Swine Grower:

Your State Agricultural Experiment Station has begun a study of pork production. The purpose of this study is to help individual producers lower the cost of feeding out hogs. The study will be conducted on farms in this county and four other counties in the Southeastern Virginia area.

Because of your experience in hog production and your cooperation in the past with the County Extension Service, you have been selected as a cooperator, and your name has been submitted. You will be visited this summer by Barry Carr, a staff member of the Virginia Agricultural Experiment Station, who will explain further the study and will have certain questions about your hog feeding operation. It is hoped that you will put forth an honest effort to cooperate in every reasonable way. The information gathered will be of great benefit to you as an individual producer, and to the county and state producers who were not selected and very definitely need this type of information.

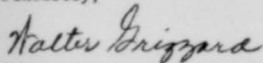
All information you might provide will be held in strictest confidence. All information which is published will be in the form of totals and averages and will be unidentified as to source.

In the past year the extensive slaughter facilities in our area found it necessary to bring in from outside nearly three-fourths of the hogs they processed. We can and must meet this outside competition by continually working for lower costs. If we fail it may cost us our local markets. We believe that the results of this study will help producers here in our county to reduce costs and increase profits.

Mr. Carr will visit you soon. He will explain the methods of this study to you. At that time, tell him if you will cooperate with the study.

Thanking you very much for your sincere cooperation, and with best regards, I am,

Sincerely,



Walter Grizzard
County Agent

rhr

Agricultural Extension Service
of the
Virginia Polytechnic Institute

Smithfield, Virginia
September 28, 1961

Dear Isle of Wight County Farmers:

A few years ago we made a survey in the county of farm needs and problems, after which committees were appointed and a detailed program set up. This program was approved and adopted.

We are now in the process of re-surveying to determine needs and problems today, in order to revise, as needed, the program we now have.

Please let us know what you think are the greatest problems in agriculture in our county. We need suggestions of projects we might conduct and assistance we might give in meeting these needs and solving these problems.

Suppose we begin our thinking with this fact: We have a local market for hogs which can purchase all of the hogs we can produce, and more. Because of this, farmers should consider very seriously expanding hog production. For this reason we will begin the survey with swine. The state extension has added an assistant swine specialist, John Henry Carter, Jr., stationed in Suffolk, primarily to assist with swine projects in this area. Mr. Carter is available for assistance with problems in production, management, and sanitation.

Let me know if you have problems and wish assistance.

Enclosed you will find a card for your convenience in answering.

Sincerely,

Walter Grizzard

Walter Grizzard
County Agent

rhr

Enclosure - 1

COOPERATIVE EXTENSION WORK IN AGRICULTURE AND HOME ECONOMICS

U. S. DEPARTMENT OF AGRICULTURE AND STATE LAND-GRANT COLLEGES COOPERATING
Smithfield, Virginia

September 28, 1961

1. I would like to receive assistance with the following swine problems on my farm. Name _____
- a) feeding 1) breeding herd ___ 2) weaning to market ___
- b) selection of breeding stock replacements ___
- c) facilities 1) farrowing ___ 2) feeding ___
- d) general management ___
- e) Why are not more hogs produced in this area? _____
- _____
2. What is the greatest county farm problem and need? _____
- _____
3. Other farm needs and problems that need attention. _____
- _____

Sincerely, *Walter Grizzard* Walter Grizzard, County Agent

34
72

sponsored shows and sales, breed sponsored sales and for individual farmers to use as herd expansion or replacements. The number of purebred meat-type animals placed by extension workers, purebred breeders, livestock committee members, was 86 boars, 27 bred gilts, and 68 open gilts.

Attached are some of the letters and mimeographs used in teaching the hog program and meeting the goals set forth.

(See Page 30, paragraph 1, "Feeding Corn to Hogs")

2. Beef Cattle

a) Situation and Needs

In 1940 there were 302 head of beef cattle, in 1945 there were 597 head, in 1950 there were 565 head and in 1955 there were 1,648 head. The 1960 census indicated that 140 farmers had 1,176 head of cattle with 730 being steers and bulls.

The county is better equiped to produce steers than to attempt to maintain large numbers of cow herds. We have grain and peanut hay in abundance which is a natural for producing steers.

The present needs of beef cattle growers in the county are:

1. Wiser use of farm feeds
2. Improved management practices
3. A better system for marketing

b) Goals for 1961

1. Increase steer numbers by ten percent above the 1960 census
2. Feed more steers for market if prices are favorable
3. Improve beef cattle management
4. Increase beef cow herds

c) Extension Methods

1. Advise farmers of the locations and dates of feeder calf sales
2. Promote the use of cover crops, using roughage in the field after harvest, peanut hay and silage for wintering cattle
3. Suggest finishing cattle where there is an abundance of corn
4. Encourage the use of stilbestrol in the ration of fattening cattle
5. Promote the wintering of lightweight calves for yearling feeder steers

- 54
72
6. Encourage farmers to adjust cattle numbers to carry through the summer to available pasture and not to over-graze
 7. Most of the time it is right to cull unproductive heifers on the first calf
 8. Let farmers know that the grading service is available. Encourage farmers to have cattle graded before selling
 9. Contact all producers who have beef cattle on feed to assist them with management problems

d) Results

An all day livestock school was held in the spring with 89 persons attending. At this school John H. Carter, assistant extension animal husbandman, gave a talk on cattle production, and C. T. Barnes, livestock grading supervisor, discussed the economics of livestock grading. Slides were shown on beef cattle production.

The agent assisted Dr. Farley, Veterinarian at the Diagnostic Laboratory, in revising the list of cattle growers in Isle of Wight County who had tested for Bangs and had received Bangs free certificates.

Much of the beef cattle work was done with individuals, assisting them with problems in marketing, feeding and management, including pasture management.

Several county farmers contacted the agent with reference to marketing cattle through organized individual or community sales. The district agent, beef cattle specialist, and assistant livestock specialist were contacted to find out exactly what the agent might do about this. Letters were mailed to all beef cattle growers advising them of the sale. Also letters were mailed to all county cattle farmers with a handbill enclosed. The agent discussed with a number of farmers the possibility of marketing their cattle through the sale and assisted them with selecting animals for the sale. The sale, which was the first in this county, was held on Saturday, October 7 at the Smithfield Livestock Market. The sale brought out 35 owners who offered 672 head. Farmers brought from one to 73 head. The animals were purchased by 37 buyers. The range of purchase ran from one to 80 head. Prices bid for steers ranged from \$21.50 to \$27.25 per hundred. Prices for heifers were from \$20.00 to \$22.50. One-half of the animals purchased were shipped out of the area while the other half exchanged owners within the locality. The total amount of the sale was \$70,002.27. This was the largest number of cattle we have had assembled at one time in the county. The manager stated he was more than pleased with the outcome of the sale. A local buyer stated the animals compared very favorably with any he had seen in Virginia. Those conducting the sale said the quality had improved tremendously in the last few years. The agent believes the sale can be improved upon and

Agricultural Extension Service
of the
Virginia Polytechnic Institute

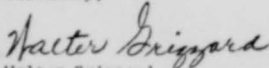
Smithfield, Virginia
September 18, 1961

Dear Beef Cattle Grower:

Plans have been made for a special feeder cattle sale for our locality. We may make mistakes in this first sale but it seems to me it is an excellent opportunity for feeder producers to market their product.

All types of feeders will be accepted. This will afford a market for low-grade as well as better grade feeders. For buyers or local farmers in the market for feeders, the advantage will be groups of uniform lots with reference to weight and quality. Buyers can obtain the number they wish to purchase in uniform groups.

Sincerely,



Walter Grizzard
County Agent

rhr

Enclosure

SPECIAL SALE

Of

FEEDER CATTLE

At The

SMITHFIELD LIVESTOCK MARKET, INC.

SMITHFIELD, VA.

Saturday, Oct. 7, 1961

SALE TIME - 2 P. M.

All types of Feeder Cattle Accepted - To Be Weighed Day of Sale between 5 a. m. and 1 p. m.

Cattle will be sold in uniform lots.

PRINTED BY THE SMITHFIELD TIMES, SMITHFIELD, VA.

34
72

hopes that it will eventually come to be a state graded offering. However, he is pleased that local farmers have an organized market for their cattle.

Beef cattle numbers have been increasing gradually over a number of years. Beef production is not a major enterprise, however it is a good sideline to a limited extent, for our farmers who have pasture roughage and grain. Some farmers who have gone into the beef production quite heavily have gone out of business saying that they were unable to make money or did not have sufficient land or source of cheap feed.

It is believed that the 1961 goals have been met. The Junior Baby Beef Show is another evidence of this fact, because five of the 20 calves graded prime or prime minus. (Beef Cattle Enclosure Attached)

3. Sheep

a) Situation and Needs

There were 277 sheep and lambs in the county in 1945, 522 in 1950, and 707 in 1954. In 1958 there were approximately 910 head. The 1960 census gives a total of 922 head of sheep. Sheep numbers are increasing.

The percentage of profit per head of sheep is very high. However; we feel that sheep numbers are limited. Only 460 lambs were sold from 659 ewes, which is about three-fourths per ewe.

Sheep production needs of the county farmers are as follows:

1. Improve quality as well as quantity
2. Better management of lambs
3. Parasite control
4. Shearing

b) Goals for this year are:

1. Increase the number of sheep by 50 head
2. Have choice and prime grade lambs increased by 15 percent
3. Increase number of lambs per ewe to one lamb per ewe
4. Have 80 percent of the sheep sheared

c) Extension Methods

1. Encourage farmers to handle ewes so that they will breed early

2. Advise sheep growers to creep feed lambs
3. Stress the importance of being on hand at lambing time
4. Advise farmers to use only selected native or good quality western ewes for flock replacements and cull ewe flocks on a production basis
5. Encourage the feeding of ewes before lambing to prevent lambing paralysis and to stimulate the milk flow
6. Inform farmers that parasites can and must be controlled
7. Encourage all producers to market wool through the county wool pool
8. Send circular letters to all sheep growers and publish news articles
9. Conduct lamb castrating and docking demonstrations
10. Send letter to all sheep growers with reference to management, including castrating and docking and feeding recommendations
11. Send letter to sheep growers advising change in system of marketing
12. Make plans for and conduct the lamb pool sales
13. Get a custom sheep shearer in the county to shear sheep

d) Results

The first in a series of three fat lamb sales was held May 10 at the Smithfield Livestock Market. A total of 315 lambs was sold. One hundred twenty-one lambs which averaged 97 pounds, graded prime and brought \$20.15 per hundred weight. Sixty-seven choice lambs, average of 84 pounds, brought \$19.30. Thirty-two good grade lambs, average of 70 pounds, were sold for \$16.00. The total number of lambs, ewes, and rams going through the sale was 373. The quality of the lambs as a whole was excellent. The percentage of prime lambs was about 40 percent.

The second lamb pool sale was held June 7. A total of 716 lambs were sold. One hundred eighty-nine prime lambs, average of 97 pounds, brought \$19.55. One hundred ninety-one choice lambs, average of 87 pounds, brought \$18.75. One hundred thirty-five good grade lambs, average of 76 pounds, were sold for \$16.10. The total of lambs, ewes, and rams was 771.

The last lamb pool was held July 5. A total of 539 lambs were sold. This total was lower than some of the previous final sales. We think this was due primarily to the fact that lambs were

34
72

selling reasonably good all along outside the pool. This particular day was a good work day for farmers during a period when rain had caused them to be behind in their work. There were 49 prime lambs, average of 89 pounds, and brought \$21.75. There were 159 choice lambs, average of 87 pounds, and brought \$20.60. One hundred forty-six good lambs, average of 90 pounds, brought \$20.00.

Letters were mailed to sheep growers giving details of the Tidewater - Virginia wool pool which was held in Franklin on June 9. The wool was sold to Nicholas and Company of Boston, Mass. with the price for top prime clear wool \$55.45 per pound. The Peanut Growers Cooperative charged one cent per pound for handling. Thirty farmers from Isle of Wight sold 3,878 pounds of wool through the pool.

The agent arranged to have 800 head of sheep sheared on 38 farms in the county.

4. Dairying

a) Situation and Needs

We have about 6,000 acres of improved pasture and 500 acres of summer pasture. There are too many cows leaving the dairy herd because of low production. According to the 1954 census the number of dairy cows in the county two years old was 1,512. The average size of the herd in the county is about 50 cows according to a dairy survey. Twenty-four percent of heifers were vaccinated for brucellosis according to the 1955 records. The 1960 census shows 944 milk cows in the county.

The brucellosis test program was completed in 1958. The county received a certificate for having been declared Modified Certified Brucellosis-Free.

More than ever the importance of efficiency and good management is the principle ingredient in farm profits and success. Volume also is becoming more important. This is evident by more small farmers going out of business or doing off the farm work and renting additional land and the like. A specific evidence of this county is that we have only nine out of sixteen dairymen left.

Following are needs of the dairy program:

1. Disease control
2. Adequate summer pasture
3. Elimination of low producers
4. More calfhood vaccinations

b) Goals for 1961

1. Reduce the number of mastitis cows on dairy farms by 20 percent
2. Increase summer supplemental pasture to 350 acres
3. Have 25 percent of heifers vaccinated
4. Increase average production per cow from 625 pounds per month to 650

c) Extension Methods

1. Send monthly circular letter in connection with the mastitis control program
2. Advise farmers that even though the state discontinued paying for calfhood vaccination it is still a good practice
3. Send letter and write news articles on summer pasture
4. Work with DHIA and encourage non-members to keep records
5. Send letters to farmers giving information on vaccination of heifer calves
6. Advise and encourage farmers to breed cows to freshen during base period and cull low producers
7. Much of the dairy work will be done by individual contacts, dairy meetings and dairy committees

d) Results

The number of dairies in Isle of Wight County has remained the same for this year which is somewhat unusual. As for the past two years, three have gone out of business each year. Some dairy farmers say that they are on the verge of going out of business mainly because of labor.

We have continued to send the monthly mastitis control leaflets in cooperation with the Virginia Mastitis Prevention and Control program. We believe this monthly circular to dairymen has been valuable in controlling mastitis.

The number of heifer calves under one year old vaccinated for Brucellosis through July was 178 or 25 percent.

Some of the pasture work was for dairy farmers.

D.H.I.A. members have been visited to assist them in correcting mistakes in the herd record books and improve the effectiveness of these demonstrations.

Agricultural Extension Service
of the
Virginia Polytechnic Institute

Smithfield, Virginia
May 22, 1961

TO: ISLE OF WIGHT COUNTY DAIRYMEN

Dairymen often ask this question: What effect does breed, season of calving, gestation, dry period, and body weight have upon milk and fat production in dairy cattle?

W. S. Griffith, dairy specialist at VPI, says this question is of practical interest to every dairymen, and research at the University of Georgia has given some practical answers.

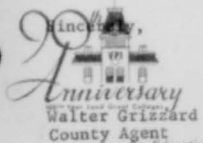
Generally, the report indicates that dairymen should breed for cows of larger than average size to get higher than average production within a breed. If nutrition is a problem, then cows calving in the winter will produce more milk than cows calving in any of the other three seasons. Management seems to have more effect on production than does breeding. Whatever breed you own, production can be increased by improved feeding and management. Switching breeds is seldom the answer to the problem of low production.

Specifically, in the Georgia tests, breed was found to account for 11 percent of the difference in milk production but only 3.7 percent of the difference in fat production. Differences in body weight accounted for 8.5 percent in fat production. Heavier cows were better producers.

The number of days pregnant during the lactation accounted for 7.8 percent of the difference in fat production. Cows that were not pregnant as long as others tended to produce more milk.

The season of calving accounted for 4.8 percent of the difference in fat production. Cows calving in the winter had the highest records followed by those freshening in spring, fall, and summer. It was assumed that this seasonal effect was partly nutritional.

The scientists were unable to find any difference in milk production that could be traced to differences in the preceding dry period. This is contrary to previous reports. The explanation for this may be that nearly all the cows had at least a 42 day dry period, and scarcely any had more than a 60 day dry period, so there wasn't enough difference to be reflected in production. Griffith says it is still believed that short dry periods are generally associated with lower milk yields.



COPY

An Educational Service of the Virginia Polytechnic Institute in Cooperation with the U. S. Department of Agriculture and County Governments

34
72

On July 10 the State Jersey Breeders Association Field Day was held at a Jersey dairy farm in the county. Tours were conducted over the farm. The agent served as a guide and explained the various phases of the farming operation to about 100 guests.

It is believed that production per cow has increased this year. A circular letter sent to dairymen is attached.

B. Agronomy

1. Peanuts

a) Situation and Needs

Peanut acreage in Isle of Wight County in 1940 was 20,604 acres with a yield of 1,297 pounds per acre. The yields have increased continuously; in 1955 the acreage had decreased because of quotas to 15,378 and the yield had increased to 1,827 pounds per acre.

Because peanut acreage is controlled by quotas and farmers are permitted to plant only their acreage allotment, improvements, practices and goals will have to come from changes other than increased acreages. The 1959 county acreage allotment was 16,215 acres. The 1960 allotment is 16,207. National support price is \$201.24 per ton.

The 1958 harvest season was one of the best we have experienced with highest ever harvested yields. Weather during the harvest season was just about perfect for harvesting.

Many farmers have experienced considerable damage due to stem rot for a number of years. Now that a control has been found we hope to continue to work in controlling this fungus.

Nematode infestation seems to be on the increase.

We have a new peanut variety, Virginia 56-R, released to growers in 1957, which has shown promise of being used quite extensively by farmers in that it produces a high percent of extra large and also a high yield. In 1960 the certified bunch variety, Georgia 119-20, was released to farmers.

There is very much interest and desire for information with reference to mechanical harvesting and drying of peanuts.

It became necessary to use five percent DDT dust in 1958 in order to control peanut leafhoppers. The use of five percent DDT on peanut vines made them unsuitable for livestock feed. In this county where peanut vines are used extensively for cattle and cow feed, the law prohibiting the use of hay treated with five percent DDT was economically important as we have over 5,000 head of cattle, most of which are fed some peanut vine hay.

34
72

Following are needs of peanut farmers in the county:

1. Available competent laborers at harvest time
2. Mechanization to replace labor in economic reach of farmers
3. Improvement in economics of heaving peanuts
4. Improve methods of harvesting
5. More economical production and harvesting methods
6. More know how and care in mechanical harvesting
7. Use soil sample analysis to determine fertilizer and lime needs in order to use only fertilizer and lime materials at the rate needed
8. Control diseases, insects and weeds

b) Goals for 1961

1. Assist 20 additional farmers in constructing mechanical harvesting and drying units
2. Assist 40 farmers to correct methods and procedures in drying peanuts mechanically
3. Get 500 acres treated with chemical weed control to aid in the control of stem rot
4. Have 25 farmers to demonstrate correct plowing and cultivation for stem rot control
5. Expand the use of Virginia 56-R and Georgia 119-20 varieties
6. Continue using aldrin for southern corn rootworm control. Set up demonstrations using new material, Diazinon, when released
7. Increase the average yield 30 pounds per acre

c) Extension Methods

1. Planning
 - a) Eight members of the agronomy committee met and revised last year's accomplishments, suggested projects and demonstrations for 1961 and discussed methods of carrying out the program.
 - b) Projects were also discussed with other key people

- 34
72
- c) Specialists were contacted for planning and conducting demonstrations

2. Cooperation with Others

- a) The four equipment dealers in the county will cooperate by providing a meeting place and lunch for the mechanical harvesting and drying meeting and tour
- b) Work with the Virginia Crop Improvement Association in certifying seed
- c) Have peanut millers and buyers handle certified seed including Virginia 56-R and Georgia 119-20
- d) Cooperate with the Association of Virginia Peanut and Hog Growers Association, Inc.
- e) Extension specialists, A. J. Lambert and Easley S. Smith, Associate Extension Agricultural Engineers, will assist with mechanical peanut harvesting projects
- f) Cooperate with research workers at the Tidewater Field Station
- g) The Virginia State Department of Agriculture will furnish shipping bags and make germination tests
- h) The soil conservationists will endeavor to tile peanut land before planting time

3. Demonstrations and Teaching Methods

- a) Demonstrations will be planned to include the following:
 - 1. Mechanical harvesting and drying. A meeting will be held on February 23 followed by lunch and tour
 - 2. Sting nematodes
 - 3. Control of stem rot
 - 4. Peanut varieties of Virginia 56-R and Georgia 119-20
 - 5. Correct application of fertilizer and lime
 - 6. Correct methods of applying plaster
 - 7. Use of chemicals in weed control
 - 8. Use of aldrin or material to replace aldrin for control of southern corn rootworm

4. Publicity

- a) Circular letters, news articles, bulletins, meetings, and visits will be used to publicize the mechanical peanut harvesting and drying program
- b) Guides on mechanical peanut and harvesting will be distributed to farmers
- c) The revised peanut weed control folder will be mailed to growers in a circular letter
- d) If a material replacing aldrin is approved, farmers will be advised by circular letters and news articles at once
- e) Every effort will be made to advise farmers the value of soil sample analysis and that shipping boxes and cartons are available and that recommendations will be given, based on the soil sample results
- f) Other projects which will receive publicity are:

Stem rot control

Nematode control

The correct fertilizer materials and methods of applying

The value of using certified seed

Recommended seed varieties

Importance of seed germination tests

Advantage of examining tags before buying seed

d) Results

Peanut mechanical harvesting and curing was a major project this year. The year began with two organized groups and two business concerns who were interested in information and facts relating to building commercial driers. The agent and A. J. Lambert, associate extension engineer, met with these groups to discuss possibilities. Neither of these constructed a commercial drier or went into the artificial drying in a big way. However, two of the leaders did construct individual drying systems.

Later during the year assistance was given to three farmers who each constructed commercial driers. The largest of the three driers cured approximately 1,500,000 pounds or 750 tons of peanuts.

A large commercial drier which has been in operation for a number of years was expanded again this year by the addition of eight new bins. In constructing these new bins the builder followed extension revised plans which was an improvement over his first construction.

There was quite a bit of activity with reference to plans for peanut mechanical harvesting and drying all through the year. The agent discussed this subject with many farmers and implement dealers.

34
72

A. J. Lambert, associate extension agricultural engineer assigned to peanut drying, was in the county nearly every month and twice in January and February. In January he assisted ten farmers with construction plans for driers and the agent assisted five others.

The agent and 16 farmers attended a peanut drying demonstration on February 2; and on February 10 A. J. Lambert was in the county to assist farmers in planning mechanical peanut drying units. However; the biggest event in February was a mechanical peanut harvesting and drying meeting, followed by a tour in the afternoon to four different type farm installations. A. J. Lambert and Easley Smith, associate extension agricultural engineer, participated in the meeting. There were 98 people present for the meeting and tour. Lunch was provided by four implement dealers in the county. A program of this event is attached.

Interest in mechanical harvesting and drying of peanuts remained high on through the year. Almost every day someone would ask questions about some phase of artificial curing of peanuts.

Equipment dealers in the area brought together an array of peanut equipment , including a two-row peanut digger and windrow shaker, peanut combine, drying bin, moisture tester, peanut wagon drier, peanut sampling and grading machine, and an assortment of elevators and augers for a demonstration in July. The agent and more than 50 farmers attended this demonstration.

September was also an exceptionally active month. The agent visited and distributed printed guides to all farmers with peanut drying installations. The guides, printed on cardboard, were posted at each curing installation. The guides have eleven pertinent facts and steps to follow for the correct artificial curing process. (Copy attached) There was quite a bit of scepticism about peanuts being cured correctly. These visits were made and guides distributed in an effort to have all artificially cured peanuts done in a highly satisfactory manner. A. J. Lambert was in the county in October with instruments to check the efficiency in operations. All reports from farmers and buyers indicate peanuts were cured properly.

A demonstration was held in September at one of the newly constructed installations. Artificial curing equipment was distributed right up to the time of use. Combines were sold in some cases to farmers who had already stack-poled their peanuts. One dealer sold 20 combines; another sold 14. One dealer sold nine farm drying units and one commercial unit.

Assistance was given this year with the construction of 24 driers, making a total of 35 in the county. Thirty new combines in the county for farm or commercial drying. Fourteen combines were sold to farmers for combining stack pole peanuts, making a total of 60 combines in the county.

MECHANIZED PEANUT HARVESTING MEETING

February 23, 1961

Trends in Mechanized Peanut Harvesting in this County - County Agent,
Walter Grizzard

Factors to Consider in Maintaining Quality in Field Operations -
E. S. Smith, Associate Extension Agricultural Engineer

Field Equipment for Mechanized Peanut Harvesting - E. S. Smith

Factors to Consider in Maintaining Quality in Artificial Drying -
A. J. Lambert, Associate Extension Agricultural Engineer

Types of Drying Facilities for Peanuts and Management Considerations -
A. J. Lambert

The Economics of Mechanized Peanut Harvesting - E. S. Smith and
A. J. Lambert

Correct Wiring - George Upchurch, Virginia Electric & Power Co. Rep.

Peanut Grading and Storage Loans - T. G. Massey, Price Support Specialist,
A.S.C.S.

Discussion

Lunch

Business Meeting Peanut & Hog Growers Association

Farms Visited on Tour:

Wilbur Nelms
M. H. Holland
S. Lane Gwaltney
John T. Butler

GUIDES FOR PEANUT CURING

1. Give Peanuts Time to Ripen After Digging Remove as much soil as possible from the peanuts. Shake at time of digging and leave in windrow again from one to two days after digging or when soil is dry. Peanuts should be given time to ripen and dry to less than 35% moisture content before combining. With favorable weather, peanuts can be combined from 5 to 7 days after digging. If peanuts in windrow have not dried to 35% in 8 days and unfavorable weather continues, it is advisable to combine as soon as possible regardless of moisture content.
2. Fill Bins Uniformly Manage the harvesting operation to eliminate as much soil and trash as possible before placing peanuts in curing bins. Place peanuts in curing bins immediately after combining. Distribute peanuts evenly when filling the bin and do not allow soil and trash to accumulate in one place. Start ventilation immediately even though bin may be only partly filled.
3. Keep Curing Air Temperatures Below 95° F. The number of peanuts which split or lose their skin coat (shelling damage) increases with higher temperatures. Continued high temperatures contribute to poor flavor. Set thermostat to prevent temperature from exceeding 95° F.
4. Keep Temperature Rise Below 15° F. If outside air temperature is 70° F., the temperature of the heated air should be less than 85° F. Use unheated air when outside air temperature is above 80°F. Moisture removal from peanuts should not exceed $\frac{1}{2}$ of 1% per hour.
5. Control the Relative Humidity of the Drying Air as Much as Possible. Set the humidistat at 70-80% relative humidity if natural air passes over it. Set the humidistat at 55-60% relative humidity if heated air passes over it.
6. Use an Air Flow of 10 Cubic Feet per minute per cubic foot of Peanuts. The fan should be rated to operate against a minimum of $\frac{1}{2}$ inch static pressure.
7. Maintain a Uniform Depth of not more than 5 feet of Peanuts. This is the maximum depth for peanuts at 30% moisture. The depth should be reduced for higher moisture peanuts. Roughly, the depth should be less than 4 feet for peanuts of 35% or more moisture content.
8. Maintain a Uniform Moisture Content throughout the Bin. With recommended depths, temperatures, and air flow, a moisture difference between top and bottom of bin of less than 2% can be expected.
9. Don't Overdry Peanuts. When average kernel moisture content is approximately 10-11%, some of the kernels will be down to approximately 9% moisture content. Split kernels increase as moisture content decreases below 8% moisture.
10. Adjust Gates to Equalize Air Flow in Bins. When all bins do not contain the same depth of peanuts, the air control gates must be adjusted to regulate air flow. As an example, if a bin is only $\frac{1}{2}$ full, air control gate should be one-quarter open.
11. Try to Maintain Quality. Don't walk on peanuts. Use clean bins. Use recommended handling equipment. Use controlled temperatures and adequate air flow.

Four Types of Drying Installations
From the Simple to Complex



Metal Bin



Trailers under a Shed



6 Bin Unit - Farm Built



Buying Station in Conjunction
with 6 bin Curing Unit

34
72



20 BIN COMMERCIAL UNIT IN CONJUNCTION WITH
BUYING STATION



ANOTHER VIEW OF 20 BIN UNIT

3/1/61

Control Insects

Among the three most destructive insect pests of peanuts are thrips, potato leafhoppers, and the southern corn rootworm. Thrips attack the developing leaves soon after the young plants emerge and cause a condition known as "pouts." Leafhoppers cause "tip burn" of the leaves during July and early August. The southern corn rootworm feeds on the developing pegs and pods and is usually more severe on dark heavy soils.

One application of 2 pounds of aldrin per acre, correctly applied, in most areas will control both the southern corn rootworm and thrips.

The insecticide can be applied in granular form in concentrations ranging from 2 to 10 percent. Use the granular formulation best adapted to the application machinery available. Treatments also may be made using a 5 percent dust at 40 pounds per acre. The insecticide should be applied evenly over soil surface before first cultivation and cultivated into soil immediately.

These recommendations failed to control the southern corn rootworm in certain areas in recent years. Where such failures have occurred, or are anticipated, consult your county agent or the Extension entomologist, V.P.I., for further information.

Leafhoppers can be controlled by the use of 3/5 percent DDT dust, a 4 percent malathion dust, or either insecticide in combination with sulfur. Where DDT is used the peanut hay cannot be fed to livestock.

See V.P.I. Extension Circular MS-127 (current revision), "Control the Potato Leafhopper on Peanuts."

A letter was mailed to farmers and a news article published giving recommended practices to aid in controlling stem rot. Included in these recommendations were uses of chemicals to control weeds. Farmers were mailed a copy of circular 413, Larger and Better Quality Peanuts, with the revised supplement on chemical weed and insect control. (Revised supplement attached) This circular contains all recommended peanut production practices.

Allan Kates, associate extension weed specialist, was in the county June 1 to assist with two weed control demonstrations. The demonstrations compared three treatments for controlling weeds in peanuts and soybeans. The treatments were alanap, 3 lbs; plus dinitro (DNBP), 1½ lbs. acre; Falone, 2 lbs. plus DNBP, 1½ lbs.; DNBP, 6 lbs. per acre.

There was quite an expansion in the use of chemicals for controlling weeds. One dealer sold enough dinitro for 1000 acres of peanuts, twice as many acres as has been treated before, and enough alanap for 100 acres. Another dealer who sold alanap for 100 acres last year distributed enough for 500 acres this year. There was some alanap used, but expanded use of this chemical has been much slower than dinitro.

Stem rot was not a severe problem this year. We do not know if it is due mainly to the season; we would like to think it was due to farmers doing a better job of cultivating.

Some farmers are experiencing yield reduction because of nematodes. Nematode control demonstrations have been conducted on seven farms. Robert Pristou, associate extension plant pathologist, assisted with these demonstrations.

Worm infestation and low yields seemed to follow not particular pattern. Extremes were spotty and in many cases where low yields were expected they were higher than normal.

Incorporated in the program to expand the use of recommended peanut varieties, Virginia 56-R, runner, and Georgia 119-20, bunch, was the program to encourage the use of better seed in general. Assistance was given to farmers growing certified seed of these varieties. A circular letter was mailed to farmers promoting the use of better seed, along with other important peanut production practices. (Copy attached) Farmers were encouraged to pay close attention to seed tags or know the germination test on seed. There is a fair number of farmers in the county using Georgia 119-20, and many more are using the Virginia 56-R peanut seed.

Aldrin was used quite extensively by farmers for the control of southern corn rootworm in peanuts. About 80 percent of the peanut farmers used aldrin with very unsatisfactory results.

34
72

Agricultural Extension Service

of the

Virginia Polytechnic Institute

Smithfield, Virginia

May 5, 1961

TO: Isle of Wight County Farmers

Re: Peanut Production

Gentlemen:

Peanut Seed We go to a lot of trouble and expense to plant a crop. Then we often plant seed that we know nothing about. They have possibly gone through a heat, some of them have gotten wet, maybe they are weather damaged in picking or many other things that are too numerous to mention.

Have you had your seed tested for germination this year? Peanut seed should germinate not less than 85%. Purity should be better than 95% and no foreign seed in the sample.

If you are buying or selling seed, each bag should have a germination and variety tag attached to it. If one plants poor seed, a poor stand will result; consequently, a bad crop.

Seed is one of the most important factors in whether or not we will make a good crop. By all means take every precaution to plant nothing but the best, then give the crop a chance. With normal weather, a good crop will generally be made.

Treat your seed before planting.

If your variety of peanuts does not yield satisfactorily, you may try Virginia 56R. It is adapted to most of our light and medium-heavy soils; or Georgia 119-20, a bush peanut which is adapted to good light peanut soils.

Disease and Insect Control Endeavor to plant on a ridge rather than in a furrow. Then work soil up under the plant rather than on top of the stems. This may not control stem rot, but it should help.

Treat your peanuts not less than three times, four times is better, with Sulphur to control leafspot, DDT or Malathion, with sulphur at the first application, may be used to control leafhoppers. Where DDT is used the hay should not be used in finishing cattle or for dairy cattle.

(OVER)

Diazinon was released this year by the Food and Drug Administration. A county-wide meeting was held in March to explain this new chemical. Approximately 60 farmers attended. It was pointed out that the experimental data of diazinon was based on one year's results. A circular letter was sent to farmers suggesting they use diazinon where aldrin was not doing a satisfactory control job. A sheet giving time and rates of application was enclosed. A copy is attached.

A number of farmers and the agent attended a demonstration held at the Experiment Station, Holland, Saturday, June 17. This demonstration showed the procedure for applying diazinon, granular form, for the control of the southern corn rootworm.

Six diazinon demonstrations were conducted. The results of these demonstrations were somewhat astounding, except for one where the farmer applied the material at planting time, which was earlier than recommended. One demonstrator with a 38 acre peanut allotment last year received \$1,650 for his peanuts, about \$43 per acre. His peanut crop was considered a failure because of the rootworm injury. With the use of diazinon he increased his yields this year to 2300 pounds per acre, and 2600 pounds per acre, approximately \$260 per acre. The plot yielding 2300 lbs per acre was treated exactly as the 2600 pound plot except that cover crop was turned under where the 2600 pounds yield was obtained. The four row check plot, not treated with diazinon, was not worth harvesting.

A circular letter was mailed to farmers giving fertilizer recommendations. Fertilizer and lime recommendations for peanuts were made on 577 soil samples.

In spite of all the efforts we do not believe peanut yields were increased over last year. This is due primarily to the heavy infestation of rootworm, and also some damage from pod rot and growth cracks caused by changing growing conditions or an unfavorable season.

2. Corn

a) Situation and Needs

Corn acreage in Isle of Wight County in 1930 was 16,548 acres with a yield of 25.1 bushels per acre. In 1940 the acreage was 20,305 with a yield of 29.4 bushels per acre. There were 21,561 acres with a yield of 43.0 bushels per acre in 1950. In 1955 the acreage had increased to 24,708 and the yield per acre had increased to 47.5. Corn acreage harvested for grain according to the 1960 census, was 17,129 with an acre yield of approximately 45 bushels.

Needs of the corn farmer for 1961 are:

1. Cheaper corn production
2. Proper rates and methods of applying fertilizer materials

DIAZINON FOR CONTROL OF SOUTHERN CORN ROOTWORMS ON PEANUTS*

Peanut growers who have experienced difficulty in controlling the southern corn rootworm on peanuts with aldrin, may now use diazinon. This insecticide is available presently only in a 10% granular formulation. Excerpt from new label acceptance directions (February 16, 1961) for the use of diazinon for this purpose is quoted as follows: "--- Apply 4 lbs. actual diazinon per acre broadcast or equivalent as a band treatment over the fruiting zone. Make the application just prior to pegging. Work the material into the top few inches of soil immediately."

Directions for Application

| | | | | |
|---------------|-----------------|-----------|---|-----------------|
| Diazinon 10 G | Amount per Acre | 25 Pounds | Amount per Acre | -- 20-Inch Band |
| 10% Granular | Broadcast | 40 Pounds | (Approx. 10-Inch Band Each Side of Row)** | |

** SPECIAL NOTE: The band treatment will only be a satisfactory method of application when care is taken to be sure that the full amount stated is uniformly delivered within the 20-inch band.

Application equipment should be calibrated accurately to deliver the desired quantity of granules to the acre in the broadcast or band treatments.

Southern corn rootworm control recommendations in Extension Circular 586 (Revised April, 1960), CONTROL THE SOUTHERN CORN ROOTWORM, are still applicable where peanut growers have not experienced failures in using aldrin to control this pest of peanuts. Circular 586 is available at your county agent's office or at your local farm agent's office.

Other materials gave promising results in 1960 research tests on the control of the southern corn rootworm. However, these chemicals have not been legally cleared for use on peanuts up to the present time. Peanut growers are urged to use only approved insecticides on peanuts, and they are further cautioned to follow closely label instructions.

The acceptance, and suggested use, of diazinon for control of the southern corn rootworm on peanuts are based on only one season's results. No objectionable residues resulted when diazinon was used in accordance with the above directions.

* Supplement to the Extension Circular 586 (Revised April, 1960), CONTROL THE SOUTHERN CORN ROOTWORM ON PEANUTS.

3. High yields
4. Use of soil sample analysis
5. Use of best cultural practices

b) Goals for 1961

1. Have a 65 bushel corn yield on 80 percent of the farms
2. Have 100 farmers use correct fertilizer analysis and rates
3. Have 75 farmers follow complete production practices to reduce cost
4. Maintain the same acreage

c) Extension Methods

1. Planning

The agronomy committee met to plan programs for 1961. After reviewing 1960 accomplishments it was decided to continue the same program as last year with a few changes.

2. Cooperation with Others

- a) The extension agronomists at VPI will furnish hybrid corn performance results
- b) Seed dealers will handle recommended varieties
- c) Other agencies will cooperate in getting soil samples
- d) A fertilizer company will sponsor the 100 bushel corn program, giving a banquet for contestants and furnish prizes.

3. Demonstrations

- a) Stress weed control chemicals as a means of lower production cost and higher yields
- b) Inform farmers of the two new weed control chemicals, Atrazine and Simazine, in addition to 2,4D
- c) Show the effect of stand injury from applying too much fertilizer in the row with corn kernels
- d) Stress broadcasting of fertilizer and sidedress with nitrogen and that a part of the fertilizer be put in the row where there is low fertility level
- e) Emphasize all best production practices

- 34
72
- f) Stress high yield production
 - g) Assist 100 bushel corn club members
 - h) Show the correct use of fertilizer analysis and rates based on soil sample results for lower cost production

4. Publicity

- a) A circular letter will be sent to farmers giving names of the new weed control chemicals and advantage of controlling weeds
- b) Dealers will be advised of the new weed control chemicals
- c) Advise farmers that stand injury results from applying too much nitrogen and potash in the row with corn kernels
- d) Publicize the 100 bushel corn program
- e) The following publications will be used in the corn project: Circular 541, 100 Bushel Corn per Acre; Leaflet 99, Placement of Fertilizer on Corn at Planting, Leaflet 97, Wheel-Track Method to Plant Corn; Bulletin 183, Fertilizer Recommendations for Virginia, and Corn for Silage.
- f) Mail circular letter to farmers and seed dealers with results of corn performance test
- g) General fertilizer recommendations will be mailed to farmers
- h) Encourage farmers to use soil samples as a basis of correct fertilizer applications

d) Results

The feed grain program was introduced giving farmers an opportunity to participate in a program provided by the government to reduce corn and grain surplus. The agent attended the first meeting concerning the feed grain program in February at Courtland. This was a district meeting and was attended by county A.S.C.S. committeemen and office personnel and agents. The feed grain program activity was somewhat dormant from this meeting until April. In April the agent attended another district feed grain meeting in Courtland with county agents, A.S.C.S. committeemen and office personnel. The county Farmer's Union president who is also acting state president, visited the agent three times and discussed at some length the feed grain program. Considerable time was spent in the office reading material with reference to the feed grain program. The agent discussed the feed grain program with around 100 farmers.

1331
34
72

On April 7 the agent met in the county with A.S.C.S. community committeemen and leaders. That night the county committee met and made plans for conducting the program in the county. Three county-wide meetings were held for farmers at which the agent presided, and also discussed the conservation uses of diverted acres, a part of the program. About 135 farmers attended. The agent prepared three news articles, two circular letters with a mimeograph enclosed in each, giving pertinent facts of the feed grain program, plus a mimeograph giving crops for diverted acreage. (These are attached). By the end of April 227 farmers had signed up 2,455 acres of corn - 72.4 sorghum, \$42,757.43. Progress in the feed grain program continued with a total of 298 farmers participating in the program. The 298 farmers diverted 3,048 acres from corn and 96 acres from sorghum. There were 1,172 farmers eligible. The base acreage on the 298 farms was 6,126 acres of corn and 110 acres of sorghum.

The Grain Equipment Handling Show was held on July 18 and 19. The agent distributed 20 posters about the county, advertising this show. A list of implement dealers was furnished to a member of the show committee. The agent visited farm machinery dealers in the county and discussed the program with them. Copies of the program were distributed to professional workers, machinery dealers and other interested persons. A news article was published. More than 50 Isle of Wight farmers and the agent attended.

The agronomy committee and many of the 69 farmers participating in the corn achievement program this year made favorable comments concerning the program. The highest producing seventeen farmers in the contest were: S. Aubrey Spivey, 136.03 bushels; M. M. Pulley, 131.24; Carr H. Munford, 130.48; Harry Carr, 130.26; C. J. Underwood, 130.05; Mrs. Katie S. Gray, 129.31; John Butler, 129.20; M. Archer Edwards, 129.18; James P. Wells, 123.52; Marion Howell, 121.80; B. S. Griffin, Jr., 120.35; Herbert O'Berry, 118.55; Davie Haverty, 110.40; Shelton Thacker, 106.68; Thomas Barlow, 104.52; J. Edwin Turner, 103.68; and Forrest Cobb 101. This project was sponsored by Charles W. Priddy Company, Inc., a fertilizer company. The sponsor gave a banquet and furnished an engraved trophy and prizes of fertilizer for the three top winners. Forty-two attended the banquet. The Young Farmers' Club participated in this project this year for the first time. Five of their contestants were in the 100 bushel per acre group. Three newspapers publicized the achievement results of this project. The reporters spoke highly of the project. One reporter stated it was one of the best meetings he had ever attended. (Program attached)

The corn demonstration served as a good means of getting across best production practices. There were eight new growers included in the 17 who produced 100 bushels and over. At the corn achievement banquet the agent used charts in presenting a program on corn production statistics and facts, including cost of corn as grain and silage and comparing corn silage with other forage crops.

54
72

A GENERAL EXPLANATION OF THE 1961 FEED GRAIN PROGRAM

The 1961 feed grain program recently authorized by Congress is a voluntary program designed to stop the buildup of the feed grain supply that is now at an all-time record high level.

The program offers all producers of corn and grain sorghum an opportunity to work together and in cooperation with their Government in the task of improving the feed grain situation. Carryover stocks and production of feed grains are so high at this time that to continue our present trend is dangerous to the whole livestock-grain producing portion of agriculture.

The program provides for the voluntary reduction of corn and grain sorghum acreage from the 1959-1960 base for these crops on individual farms. Farmers who make the reductions will receive payments for diverting the former corn or sorghum acreage to conservation uses.

The Secretary of Agriculture gives the following objectives for the feed grain program:

1. To increase farm income.
2. To reduce the risk of serious overproduction of meat, poultry, and dairy products.
3. To stop the buildup of feed grain supplies and reduce it if possible.
4. To reduce Government costs of farm programs.
5. To assure consumers fair and stable prices for meat, poultry and dairy products.

The County Agricultural Stabilization Conservation office has on file for each farm the base feed grain acreage, rate of payment for diverted acres, and the normal grain yield.

To participate in this program a farmer must divert a minimum of 20 percent of his base acreage. If the base acreage is less than 25 a farmer may divert the entire base.

The diverted acreage cannot be used for soybeans or similar crops, but must be devoted to conservation use and have weeds controlled as directed by the A.S.C. committee. Vegetated cover or crops grown on diverted acreage must not be grazed or harvested until 1962.

Some possibilities for these retired acres are:

1. Permanent-type rotation cover of grasses and legumes. (Ladino Clover and/or orchard grass)
2. Temporary cover of grasses, legumes, or small grains. (Lespedeza, sudan grass, millet)
3. Water storage. (Farm Ponds)
4. Wildlife food or habitat plantings.
5. Trees or shrubs
6. Cropland in volunteer natural cover or in protected summer fallow if county committee determines it is not practicable to establish cover.

For information with reference to your individual farm you may visit the A.S.C. office.

Walter Grizzard
County Agent

EM

Permanent-Type Cover

| <u>Crop</u> | <u>Rate Per Acre</u> | |
|---------------|----------------------|------------------------|
| Fescue | 30 lbs. | 12 lbs. in mixture |
| Orchard Grass | 8 - 15 lbs. | 3 - 10 lbs. in mixture |
| Ladino Clover | 2 lbs. | 1 - 2 lbs |

Temporary-Type Cover

| <u>Crop</u> | <u>Rate Per Acre</u> |
|----------------|---|
| Lupedeze | 20 - 30 lbs. |
| Sudan Grass | 20 - 35 lbs. |
| Millet | 40 lbs. |
| Grimson Clover | 20 - 25 lbs. |
| Cowpeas | $\frac{1}{2}$ bushel in row ($1\frac{1}{2}$ - 2 broadcast) |
| Barley | $1\frac{1}{2}$ - 2 bushels |
| Oats | 2 - $2\frac{1}{2}$ bushels |
| Rye | 1 - $1\frac{1}{2}$ bushels |

**Grizzard Heads
ASCC Meeting**

SMITHFIELD — Walter H. Grizzard, county agent and member of the County Agricultural Stabilization Conservation Committee, will be in charge of a meeting tonight, at Darden's Store at Ballard's crossroads, beginning at 7:30 p. m.

The object of the meeting will be to explain the feed grain program.

The program will include a general explanation of this program, to be given by Thurman Winslow, Vice-chairman of the A.S.C. Committee. Jack D. Gwalney, County A. S. C. office manager, will give illustrations on how to calculate farm payment for diverted acreage, and answer other questions. Walter Grizzard will discuss conservation use of diverted acreage.

A similar meeting is also scheduled for Monday, April 17th, at the Isle of Wight Court House at 8 o'clock.

CORN ACHIEVEMENT PROGRAM

November 15, 1961

Presiding - M. Archer Edwards, Chairman of Agronomy Committee

Call to Order -

Invocation - M. M. Pulley

Dinner -

Introduction of Guests - M. Archer Edwards

Young Farmer's Club - G. S. Williams, Vocational Agriculture Teacher

Corn Guessing Contest - G. S. Williams

Program -

Corn Production for Grain and Forage - Walter Grizzard, County Agent

Feeding Corn to Livestock, Advantages and Possibilities of

Marketing Corn through Hogs - John H. Carter, Jr., Assistant Swine Spec.

Presentation of Certificates - B. S. Stump, Assistant County Agent

Presentation of Trophy & Prizes - Dow M. Keeling, Representative of Charles
W. Priddy Company, Inc.

34
72

(See news article, last paragraph, feeding corn to hogs). John Henry Carter, associate extension animal husbandman, discussed feeding corn to hogs as a means of marketing corn. He showed the advantages and possibilities of using corn grown in the county for three types of production. 1) for feeder pig, 2) for growing market hogs, 3) for a combination of growing feeder pigs and market hogs.

An agronomy school was held in January at which timely tips on corn production and keeping soil records was discussed by W. W. Lewis, extension agronomist. Information with reference to the use of atrazine for controlling weeds in corn was given by A. H. Kates, associate extension weed specialist. Very little atrazine was used because of its expense. About 3000 acres of corn was treated with 2,4D for weed control.

Corn fertilizer and variety recommendations were mailed to farmers in February. (copy attached) A local farm supply dealer furnished a dinner for 59 farmers at a meeting to receive corn fertilizer and variety recommendations and other corn production facts.

Carl Stoddard, Chilean Nitrate representative, cooperated by furnishing nitrogen for a corn fertility demonstration.

A demonstration of minimum tillage with wheel track planting was conducted on a farm in Isle of Wight County this year. The wheel track demonstration allowed the farmers to save hours in both labor and equipment. Other advantages were controlling erosion, grazing cover crop until planting time, conserving moisture and wear and tear of equipment. In this demonstration two diskings, two harrowings, two trips over the field with a rotary hoe and one cultivation were eliminated. Time was also saved in applying a part of the fertilizer at planting and again at the first cultivation. The yield was about 100 bushels average, better than their usual average and about 10 bushels above their previous high yield. Approximately 75 farmers have asked questions with interest in this demonstration.

Fertilizer and lime recommendations were given on 123 soil sample results.

A circular letter and news article was used suggesting to farmers that they consider marketing corn through hogs as a means of increasing the price for corn.

Assistance has been given to farmers in constructing silos and making silage as a means of cheap feed for livestock.

Corn goals have been met except for total acreage which may be reduced to the extent of that going into the feed grain program.

34
72

THE SMITHFIELD TIMES

Phone 357-6201

ISLE OF WIGHT COUNTY, VA.

Phone 357-62



Photo by Jesse J. Scott

CORN CLUB AWARDS—Dow Keeling, left, on behalf of Charles W. Priddy & Co., is shown presenting S. Aubrey Spivey of Carrsville with a trophy for being the top winner in the Isle of Wight 100-Bushel Corn Club this year. Spivey raised 136 bushels per acre. He also received a certificate for a ton of fertilizer. Runnerup M. M. Pulley, at left, raised 131 bushels per acre. He received half a ton of fertilizer.

S. Aubrey Spivey Top Winner In Corn Club Contest

Eleven persons who entered the corn raising contest in Isle of Wight County this year, made over one hundred bushels per acre. One of the winners for the second time, was a woman.

Forty-four members and guests of the 1961 100-bushel corn Club sponsored by Charles W. Priddy & Company of Norfolk, and Dow Keeling, local Priddy representative, were guests of the Club's sponsor at a delicious dinner served in the Isle of Wight School Lunchroom at 6:30 P. M. Wednesday night, November 16.

The 1961 Winners, their addresses and the quantity of corn they raise per acre follows:

S. Aubrey Spivey, Carrsville, 136 bushels; M. M. Pulley, Rt. 3, Windsor, 131; Carr H. Munford, RFD, Windsor, 130.48; Harry Carr, Rt. 3, Windsor 130.26; C. J. Underwood, Rt. 3, Windsor, 130.05; Mrs. Katie S. Gray, RFD, Windsor, 129.31; John Butler RFD, Windsor, 128.96; S. Arthur Edwards,

Agricultural Extension Service
of the
Virginia Polytechnic Institute

Smithfield, Virginia
February 7, 1961

TO: FARM OPERATORS

On the opposite side of this sheet you will find a three-year average of corn variety performances of the Holland Experiment Station. Other crop recommendations have not changed since last year.

Sincerely,

Walter Grizzard

Walter Grizzard
County Agent

GENERAL FERTILIZER RECOMMENDATIONS

Corn

600-1000 pounds of 3-9-18, 5-10-10 or 10-10-10. Apply additional nitrogen to make a total of about 80 units.

Note: Where fertilizer for both the corn and peanut crop is applied to the corn, use a minimum of 1200 pounds.

Peanuts

400-600 pounds of 0-10-20 or 0-9-27 with 500-600 pounds of plaster in 12 inch bands in June, and additional lime as needed. A new chemical is recommended for peanuts, alanap #3 at $\frac{1}{2}$ to $\frac{2}{3}$ gallons per acre immediately after planting in 14 inch bands or 2 gallons for over-all spray.

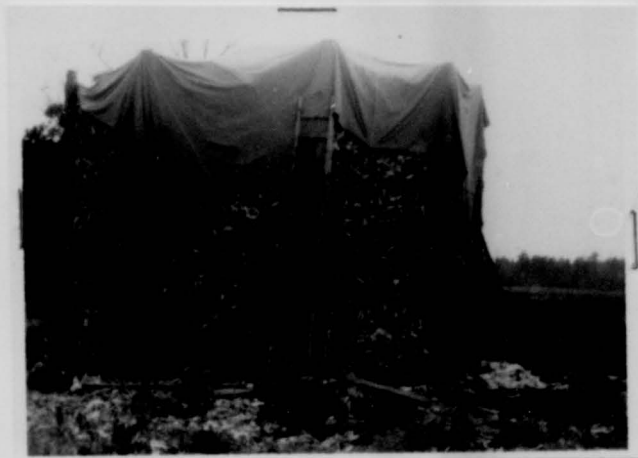
Soybeans

300-400 pounds of 0-10-20 or 0-14-14.

Small Grain

400-600 pounds of 5-10-10 or 3-9-18 or 10-10-10. Topdress with additional nitrogen if lodging is not expected.

On a specific recommendation for a certain field have your soil analyzed. We will have soil analyzed and make individual lime and fertilizer recommendations. Soil sample boxes are available at our office.



High Yield of Corn often exceeds storage space.
Above is a cheap and easy method of corn storage.
Bin-type storage of wire fence on tall posts.

34
72

3. Pasture

a) Situation and Needs

Improved pasture acreage in Isle of Wight County in 1947 was 600 acres. In 1949 the pasture acreage was 5,169. The acreage has increased continuously to 1953. In 1953 the acreage of improved pasture was 8,500. Pasture acreage has declined each year. In 1955 it was about 7,000. At the present, pasture acreage is approximately 6,000.

The problems in pasture seem to stem around the fact that pasture forage was lacking during the summer and that pastures were grazed too close because of lack of rotation in the pasture system. This is particularly true during dry spells or dry summers.

Pasture needs in the county are:

1. Better management
2. Adequate supplementary pasture

b) Goals for 1961

1. Maintain present permanent pasture
2. Provide supplemental pasture. Plan to have 350 acres. Have 7,000 acres of winter pasture.
3. Better management on 50 farms

c) Extension Methods

1. Use of soil samples
2. Give pasture lime and fertilizer recommendations based on soil sample results
3. Send out circular letter on pasture management
4. Send out a circular letter on seed and fertilizer recommendations
5. Have several demonstrations

d) Results

Five news articles were prepared with reference to the 12-month forage or on some phase of the pasture program. Dealers were visited and supplementary pasture recommendations were discussed with them.

A letter was written to all cattle and sheep growers outlining a year round pasture management system. They were furnished a list of all leaflets and bulletins available in the office with reference to pasture. (See attached copy)

Recommendations were made on 84 soil sample results for pasture management. Thirty-two farmers were assisted in establishing or re-establishing pasture.

Meetings were held and a mimeograph prepared to advise farmers of crops, rates per acre and time of seeding for both temporary and permanent pasture. One hundred seventy-five farmers attended meetings at which pasture and forage crops were discussed.

In connection with the feed grain program the agent held two meetings to discuss conservation uses of diverted acreage. A mimeograph was prepared and mailed to farmers giving forage crops that might be used on diverted acreage. (Copy attached) (See corn)

The agent assisted one farmer in building a new silo and repairing old silos. Visits were made to dairymen and farmers with silos to assist them in making quality silage for livestock.

Seed and fertilizer dealers were supplied with new bulletins and seed and fertilizer recommendations.

During the year 30 acres of alfalfa were seeded and 69 acres topdressed. There is a total of 5711 acres of pasture in the county. Two hundred eighty-seven acres of pasture were seeded and about 4000 acres topdressed. Approximately 400 acres of sudan grass and pearl millet were seeded during the year and 18,195 acres of winter pasture were seeded.

4. Soybeans

a) Situation and Needs

Soybean acreage in Isle of Wight County in 1940 was 367 acres with a yield of 21 bushels per acre. The acreage has increased about ten times in 15 years. In 1954 the acreage had increased to 3,012 and the yield per acre decreased to 16.0.

The soybean yield had not increased a great deal until 1956. Because of the use of new varieties, some farmers have yields up to 30 bushels per acre. In 1958 some yields exceeded 30 bushels. Soybean acreage has more than doubled in five years. The 1960 census gives 8,270 acres harvested by 448 farmers, with an average yield of 25 bushels.

Soybean needs in the county are:

1. Higher yield varieties should be used by more farmers

A TWELVE-MONTH FORAGE PLAN
By Walter Grizzard, County Agent

Why a Pasture Plan or System?

Most pasture and hay mixtures make half of their season's growth in the first two months of the growing season. Pasture shortages in summer are common.

What Does a Forage System Do?

A well-planned forage system furnishes quality feed for the entire year. Farmers should plan to have more fields and mixtures grazed in summer than in spring. With this system some mixtures may be used only for grazing. Other fields or mixtures should be used for silage or hay in the spring and early summer. They can then be used for temporary grazing during the drier summer season.

Such a forage plan furnishes plenty of grazing for a long season and at the same time provides for hay and silage for winter feed. It is also a drought insurance plan. With temporary fences, it is easy to graze mixtures that are normally used for hay.

When to Seed Pastures

Pastures may be seeded up to October 15. Take a soil sample to determine lime needs for permanent pasture.

What to Seed

For hogs only, seed ladino clover. For cattle, ladino clover and orchard grass or ladino clover and fescue. Use supplementary pasture of sudan grass or pearl millet for summer grazing. For winter and spring use cover crops of small grain or crimson clover, or crimson clover mixed with rye grass or a small grain. Use crimson clover alone if for hogs only.

It usually takes about 800 pounds of fertilizer to afford sufficient grazing for either permanent pasture or cover crops to be heavily grazed.

Bulletins available at the county agent's office on pasture and forage crops are:

- Bulletin 194, Good Pastures
- Leaflet 9, Increasing Your Feed Supply
- Circular 533, For Top Pastures - Topdress
- Circular 585, Managed Grazing Pays
- Leaflet 40, Here's How to Seed That Pasture
- Leaflet 135, Winter Pastures with Cover Crops
- Leaflet 1, Sudan Grass and Pearl Millet for Summer Pasture

- 2. Need to plant at correct time
- 3. Plant seed quantities for proper spacing

b) Goals for 1961

- 1. We still believe that more land should be planted in soybeans. Have 800 additional acres of soybeans planted in the county this year.
- 2. Increase soybean yields three bushels per acre

c) Extension Methods

- 1. Have eight demonstrations of the new variety, Hood and Hill
- 2. Send circular letters to growers on varieties
- 3. Encourage farmers to plant as soon after May 20 as practical, inoculate seed if needed and space properly and to not plant seed too thick, through circular letters and news articles.
- 4. Harvest before beans shatter
- 5. Publish a news article and distribute bulletins on soybean culture

d) Results

The soybean cyst nematode has been in Isle of Wight county for three years. In 1959 one farm was quarantined. Last year there were 13 and this year the number has increased by nine, making a total of 22 quarantined farms in the county. Farmers have not experienced any apparent decrease in yields or other problems resulting from the cyst nematode, except for that brought about as a result of the quarantine. Farmers think of the quarantine as a joke. Those quarantined must have all crops cleaned of soil particles and inspected by federal inspectors before being allowed to leave the farm for market. All equipment being moved from the quarantined area must likewise be washed and inspected.

A soybean cyst nematode meeting was held at Holland for the agents in the three counties within the quarantined area. Another meeting was held for the farmers who were quarantined to explain to them the whys and hows of the quarantine.

Farmers added to the quarantine in 1961 were:

| <u>Owner</u> | <u>Operator</u> |
|-----------------------|-----------------|
| Rufus Jenkins | Irvin Jenkins |
| Carr H. Munford | Same |
| Mrs. Virgic C. Rhodes | D. R. Carr |

34
72

Walter Grizzard
County Agent
Smithfield, Virginia

OUTLOOK FOR 1961

The general stability that we have seen in farm prices, cost rates and income for the past two years is expected to continue in 1961, according to the economists.

LIVESTOCK They predict hog prices will be high for several months. The 1960 pig crop decreased 11 percent. The 1961 spring crop could be six percent increase above 1960, as indicated by farmers reports of sows to farrow. As the supply increases, prices will decline. The record supply of beef and lambs will also tend to lower the prices of pork. As retail prices of beef and lambs decline consumers will tend to eat more beef and less pork.

It pays to practice sanitation with livestock to prevent outbreaks of diseases and parasite infestation. Pigs should be vaccinated for control of cholera and parasites controlled with chemicals. Lambs should be docked and castrated for higher prices and faster gains.

PEANUTS It has been said that the greatest expansion among peanut farmers will be in the field of mechanized harvesting and drying. (See attached letter). It will be important to continue practices to control stem rot, that is deep plowing to cover the organic matter, not throwing dirt on the vines and cultivating. Chemical weed control also is helpful in controlling stem rot. A number of farmers have nematodes in spots in their farms. Nematodes are usually found in deep, sandy soil. If you think you have nematodes and would like your soil tested or treated or if you would like to have a demonstration on the control of nematodes, let us know.

If you do not have a good variety of seed you might try Virginia 56-R, a runner, or Georgia 119-20, a bunch. It is suggested that you have your soil tested every two or three years to determine the lime and fertilizer needs. Aldrin is recommended until we can find something better for the control of the southern corn rootworm.

Peanut and hog farmers are invited to a meeting at 1:30 p.m. on February 23. Details of this meeting will be published in the newspapers and in farm publications.

CORN We plan to continue the 100 Bushel Corn contest with a sponsor furnishing prizes and a banquet at the close of the contest. If you are interested, let us know. The use of chemical weed control is a good practice in corn production. Many farmers do not use sufficient amounts of nitrogen. Handling and marketing of early wet corn is still a problem. Corn varieties will be about the same as recommended last year.

SOYBEANS Soybean varieties are Lee, Hood, Hill and Ogden. Farmers have told us that Lee soybeans were quite satisfactory in 1960 as they made good yields and the beans did not shatter when harvesting was delayed.

Any Assistance we may give you with any of your problems, we will be glad to do so.

If you have suggestions for programs, projects or demonstrations for this year, let us know.

| <u>Owner</u> | <u>Operator</u> |
|-------------------------|----------------------|
| Joseph H. Holland, Est. | Otis Holland |
| % Otis Holland | |
| Jacob E. Eley, Est. | Russell Carr |
| % Mrs. Kenneth Eley | |
| L. H. Alphin | John & Robert Alphin |
| A. W. Ballard, Est. | Linwood Brock |
| James H. Vaughan | B. F. Vaughan |
| A. L. Duck, Sr. | Lloyd Duck |

A circular letter on soybean outlook was mailed to farmers in January, giving recommended varieties. At the agronomy meeting in January, H. M. Camper, assistant agronomist, gave the latest research on soybean production. This meeting was well attended by farmers and seed and fertilizer dealers. Farmers were encouraged to increase their acreage of soybeans because of the greater demand for export.

Approximately 145 farmers have been reached through meetings and 85 through soil sample results for soybean production. Also an additional circular letter was mailed to farmers, giving general fertilizer recommendations for soybeans.

The soybean acreage in the county has been relatively small compared to corn. However, it 's not third in the county, about half that of the corn crop and more than half as large as the peanut crop. According to the last census corn was reduced more than 7,000 acres. Soybean acreage increased during the same period slightly above 5,000 acres. Most of the corn reduction went into soybeans. Soybean acreage at the present time is approximately 9,000 acres. According to reports from farmers, yields are as good or better than 25 bushels per acre. (Attached is program of agronomy meeting).

5. Small Grain

a) Situation and Needs

Small grain acreage in Isle of Wight County in 1930 was seven acres with a yield of 16.5 bushels per acre, oats and rye. The acreage and yield has increased mostly in oats and barley. In 1955 the acreage had increased to 1,796 acres and the average yield had increased to 26.3 bushels per acre. Oats and barley make up the largest number of acres in small grain crops. The 1960 census shows a total small grain acreage of 2,568 divided as follows: Wheat; 36 farms, 526 acres, 14,268 bushels and average yield of 27 bushels. Oats; 40 farms, 738 acres, 32,132 bushels and average yield of 43 bushels. Barley; 45 farms, 905 acres, 34,279 bushels and average yield of 38 bushels. Rye; 35 farms, 359 acres, 7,296 bushels and average yield of 20 bushels.

Following are small grain needs in the county:

1. Proper varieties

AGRONOMY MEETING

FRANKLIN TOWN HALL - FRANKLIN

WEDNESDAY, JANUARY 18, 1961

Chairman: D. T. Rogers, Jr., District Agent

| | | | | |
|-------|---|-------|------|---|
| 10:00 | - | 10:45 | A.M. | Latest Research on Soybean Production H. M. Camper, Assistant Agronomist, Eastern Virginia Research Station |
| 10:45 | - | 10:55 | | Discussion |
| 10:55 | - | 11:40 | | Weed Control in This Area A. H. Kates - Associate Extension Weed Specialist V. P. I. |
| 11:40 | - | 11:50 | | Discussion |
| 11:50 | - | 1:30 | P.M. | Lunch |
| 1:30 | - | 2:00 | | Insects and Diseases on Peanuts H. M. Clark, Superintendent, Tidewater Research Station |
| 2:00 | - | 2:10 | | Discussion |
| 2:10 | - | 2:50 | | Keeping Soil Test Records and Timely Tips on Corn Production - W. W. Lewis - Extension Agronomist V. P. I. |
| 2:50 | - | 3:00 | | Discussion |
| 3:00 | - | 3:40 | | Using the Right Fertilizer H. L. Dunton - Head, Agronomy Department, V. P. I. |
| 3:40 | - | 3:50 | | Discussion |
| 3:50 | | | | Adjourn |

2. Use of correct fertilizer analysis and rate of application

b) Goals for 1961

1. No increase in acreage is recommended. The 2,568 acres seem to be adequate at this time.
2. Maintain average yields of about 43 bushels for oats and about 35 bushels for barley

c) Extension Methods

1. Use soil sample results for individual fertilizer and topdress recommendations
2. Send a circular letter giving recommended varieties
3. Publish news articles on proper methods of fertilization
4. Send information on proper fertilizer recommendations for grains to dealers

d) Results

The feed grain program was expanded during the year to take in wheat and barley. Forty-eight farmers have signed up to put 360 acres of wheat in the grain program. At the time of this writing, 15 farmers have signed up saying they intend to divert 228 acres of barley.

A circular letter was mailed to farmers encouraging them to be more aware of the importance of reading the label on seed tags.

Two news articles were published giving fertilizer recommendations and time and rate of planting.

Leaflet 123, Fertilizer Recommendations for Small Grain in the Coastal Plain Area, was mailed to seed and fertilizer dealers and to small grain operators. (Copy attached)

Grain farmers were assisted through the use of soil samples.

Robert Pristou, associate extension plant pathologist, visited the county in April to assist with problems with small grain, particularly barley.

Total sales of small grains and grasses have decreased approximately ten percent, except for rye which has increased about 20 percent.

C. 4-H Club Work

1. Program in General

a) Situation and Needs

FERTILIZER RECOMMENDATIONS

FOR GRAIN

Apply 20 to 30 pounds of nitrogen, 40 pounds of phosphate and 30 to 60 pounds of potash per acre at seeding. This amount may be obtained in 400 pounds of 5-10-10, 5-10-5, 5-20-10 or equivalent fertilizer. On soils of very high fertility, nitrogen may be eliminated at seeding. Top-dress with 16 pounds of nitrogen per acre between February 1 and March 1. Seeding in late fall seems unlikely.

FOR PASTURE, SILAGE OR HAY

Apply 60 to 80 pounds (each) of nitrogen and 40 pounds of potash per acre at seeding. Top-dress in February with 60 pounds of nitrogen per acre. Reduce nitrogen application where fall grazing is not planned.

FERTILIZER GRADE TABLE

| | POUNDS NITROGEN PHOSPHATE |
|------------------------|------------------------------|
| 500 POUNDS OF 5-20-10 | 25 |
| 600 POUNDS OF 5-10-10 | 30 |
| 300 POUNDS OF 10-20-20 | 30 |
| 600 POUNDS OF 5-10-5 | 30 |

LIME

Soils having a pH between 5.5 and 7.0 are most satisfactory for wheat, oats and rye. Barley shows best results on soils having a pH of 6.0 to 7.0.

HAVE YOUR SOIL TESTED TO HELP
DETERMINE YOUR LIME AND FERTILIZER

WHEN TO PLANT

| CROP | DATES |
|---------------------|-------------------------|
| OATS | |
| Fall | September 25-October 15 |
| Midwinter | February 1-March 1 |
| BARLEY | October 10-November 1 |
| WHEAT | October 25-November 15 |
| RYE | October 25-November 25 |
| SEEDINGS FOR WINTER | |
| PASTURE | August 20-October 1 |

RATE TO PLANT

| CROP | BUSHELS PER ACRE |
|----------------------|------------------|
| OATS | 2 to 2 1/2 |
| BARLEY | 1 1/2 to 2 |
| WHEAT | 1 to 1 1/2 |
| RYE | 1 to 1 1/2 |
| SEEDINGS FOR PASTURE | |
| SILAGE OR HAY | 2 to 4 |

2. Observe National 4-H Club Week
3. Conduct project workshops

4. Select and coach a county livestock judging team
5. Have 4-H Achievement Day Program
6. Provide a county-wide recreational program which will include a 4-H dance, 4-H picnic, and individual club parties
7. Have committees and specialists help in carrying out the over-all 4-H program
8. Hold special project shows and sales
9. Use mass media to acquaint the public with the 4-H program

d) Results

To strengthen the over-all county 4-H Club program, the following activities were conducted in 1961:

1. National 4-H Week - 4-H Club members in several of the clubs set up exhibits and displays telling what they were doing in 4-H Club work. The highlight of the week's celebration was a county-wide social for all 4-H Club members. This event provided an opportunity for boys and girls in different areas of the county to get better acquainted. They also were taught new games and folk dances to enable them to have a more varied program at their local 4-H club meetings. Approximately 200 boys and girls attended this social event.
2. District Contest - Two junior teams and one senior team from the county participated in the District Livestock Judging Contest. The junior team won first and second place. The senior team, composed of Bobby Darden, Paul Rogers, and Johnny Dillon, placed second in the District Contest and were seventh in the State Contest. Paul Rogers was the sixth highest scoring individual in the State Contest.

The judging team received their training in several county livestock judging practice sessions. They also attended the Southeast District livestock judging school which was conducted by the 4-H livestock specialist.

One boy, George Pulley, represented the county on the Tractor Driving Contest.

3. 4-H Camp - In June sixteen boys from the county attended Junior 4-H Camp at Camp Farrar, Virginia Beach.

In August, six boys and the assistant county agent from Isle of Wight County attended the Southeast District Senior 4-H Camp at Camp Farrar. The 4-H'ers had an opportunity to attend special

34
72

interest classes on senior 4-H project, Highway Safety and 4-H Achievement record workshop. They also toured one of the Military Installations in Norfolk. Their camp theme for the week was "Your Chance to Advance."

4. Short Course - Five boys attended the annual State 4-H Short Course at V.P.I. in June. Three of the boys participated in the livestock judging contest.
5. All-Star Weekend - Paul Rogers, who was inducted into the Virginia Chapter of 4-H All-Stars at 4-H Short Course, received his All-Star key and certificate at Virginia Beach in July. Six other All-Stars attended and participated in the weekend conference.
6. County Picnic - In August the annual county 4-H picnic was held at Morgarts Beach. The meal was prepared by the 4-H members enrolled in the Outdoor Cookery project. The guest speaker for the program was W. A. Turner, associate state 4-H club agent from V.P.I. As special guest, Miss Cecilia Velez from Ecuador was present. Over 225 4-H members, parents, friends and guests attended this event.
7. Achievement Program - The annual 4-H Achievement Program was held at the Isle of Wight School. Thirty-eight boys received ribbons and medals for their accomplishments in their project work. During the program the "Share the Fun" talent contest was held. The contest was sponsored by the 4-H Honor Club. They provided the winner in the junior division with a scholarship to 4-H camp.

New members were also taken into the 4-H Honor Club. Approximately 175 4-H'ers, parents and friends attended this event.

The organization that was most instrumental in carrying out the above activities was the 4-H County Council. The entire Council met three times during the year to plan the county 4-H activities. Several sub-committees of the Council met also to plan special events.

The 4-H Honor Club met twice during the year. This is a newly formed organization in the county. The Honor Club took the "Share the Fun" talent contest as their major project. They planned and conducted the contest in conjunction with the Achievement Program.

All of the previously mentioned activities aided in carrying out the overall 4-H program. These activities have stimulated the interest of the 4-H club members as a whole. Several of the senior members have aided the club program by serving as junior leaders.

Through the encouragement and help of the adult and junior leaders, 76% of the boys in the county completed all projects.

By the use of the special activities and mass media the public in

34
2

general seems to have a better understanding what the purposes and objectives of 4-H club work are. Increasing interest has been given by the parents. More parents are assisting with 4-H club functions. By the increased interest, it is hoped that more 4-H club leaders may be secured.

2. Agricultural 4-H Projects

Market Hogs and Breeding Gilts

a) Situation and Needs

There are fifteen 4-H members feeding a total of 58 hogs for the Junior Market Hog Show and Sale.

Five boys in the Windsor area own gilts which they received from the Purebred Gilt Chain. All of the gilts are due to farrow in March and April.

The needs for the swine project are:

1. More pigs farrowed and raised per litter
2. To improve feed rations for both market and breeding hogs
3. Better management practices at farrowing time
4. More efficient use of good pasture for gilts

b) Goals for 1961

1. Have at least four members to build and use approved farrowing facilities such as a crate, pen or stall
2. Have all five boys with gilts provide pasture for their gilts

c) Extension Methods

1. Provide printed feeding and management suggestions to all members
2. Conduct fitting and showing demonstrations for market hog members
3. Assist members with pig selection

d) Results

The Market Hog project was a very popular project among the club members this year. Fifteen boys in the county showed a total of 58 hogs in the Junior Market Hog Show and Sale. This was the largest show ever to be held during the thirteen years that the show has been at Smithfield. Twenty-nine of the 35 top placings were from Isle of Wight County.

The Purebred Gilt Chain project was not as successful as it might have been. Three of the five gilts in the chain were given to boys in the Mill Swamp section of the county. The other two gilts' litters did not develop well enough to be put back into the chain. Two of the gilts farrowed ten pigs and saved nine pigs per litter.

Baby Beef

a) Situation and Needs

The baby beef project is now being conducted for the fourteenth year in Isle of Wight County. Interest in this project runs quite high each year.

There are 13 boys and two girls feeding steers for the county show. One of the boys is also feeding a steer for the Richmond baby beef show.

Needs for a successful baby beef program in the county are:

1. More buyers attending and supporting the sale
2. Better control of external parasites
3. Better feeding and management practices

b) Goals for 1961

1. Keep the show at the present size
2. Have all calves to grade choice or above

c) Extension Methods

1. Have adult advisory committee to contact potential buyers personally
2. Furnish members with management suggestions
3. Hold a county baby beef show and sale
4. Conduct a fitting and showing clinic
5. Have the 4-H livestock specialist to score all baby beef projects on the farm

d) Results

The baby beef project was quite successful in 1961.

Fifteen club members showed as many steers in the Smithfield Junior Baby Beef Show and Sale. A total of 20 steers were entered in the show. The grand champion was shown by Paul Rogers. This steer

sold for 45 cents per pound. The total sale average was \$29.75 per hundred weight. This was an average of about four to five cents above market price. The 20 steers graded as follows: six prime, 11 choice, and three good.

A new feature was added to the baby beef project for the first time. Each member's project was scored twice on the farm during the feeding period. T. A. Powell was winner of this (management) award. He received a trophy for his accomplishment.

Ten fitting and showing demonstrations were given by junior leaders in the baby beef project.

Automotive

a) Situation and Needs

One senior boys club is taking the automotive project as a club project. Other boys and girls are also interested in taking this project.

Needs are as follows:

1. More general knowledge of the safe operation of the automobile
2. Knowledge of simple car maintenance

b) Goals for 1961

1. To have at least 20 boys and girls enroll and complete Unit I of the automotive project

c) Extension Methods

1. Conduct at least eight project meetings
2. Conduct a highway hazard hunt
3. Have adult advisory group to assist with project instruction
4. Write news articles to inform the public of the project

d) Results

The automotive project was initiated for the first time in 1961. Twenty-one boys and 14 girls were enrolled in this project. Seven project sessions were conducted by the county sheriff, state trooper, two automobile dealers and one insurance agent. Two project leaders assisted with the project.

A tour of an automobile assembling plant was conducted during National Safety Week. The local automobile dealers arranged the

34
72.

tour. Eighteen club members went on the tour.

Farm and Electric Project

a) Situation and Needs

Eighty-five boys and girls are now enrolled in the Farm and Home Electric project. These 4-H members are from two school clubs and three community clubs. The Rural Engineer and Home Economist from Virginia Electric and Power Company and a representative from the R.E.A. are assisting with the project meetings.

Needs for this project are:

1. To use correct size fuses and wiring in the home
2. A better knowledge of care for electrical equipment
3. More and better quality light for studying

b) Goals for 1961

1. To have at least 75 members completing this project
2. To have at least ten members to improve their study center

c) Extension Methods

1. To hold project meetings at least once a month
2. Conduct a lamp-making workshop
3. Conduct a tour to an electric power plant

d) Results

The electric project was quite successful this year. The 85 boys and girls enrolled received definite training in fuse sizes, cord repair, wiring, care of electrical farm and home appliances and proper home lighting. These members made or repaired a total of 340 extension cords, cared for 170 electrical appliances and improved lighting in 56 different rooms.

Assisting in teaching the electric project were three representatives of the area power suppliers. In addition to the regular monthly project meetings, a tour was conducted of a Hydro-electric power plant. Fifty-six members made this tour.

Other projects receiving special emphasis in 1961 were: Entomology, tractor maintenance, crops and forestry. Forty-five boys were enrolled in the entomology project. These boys received definite training in making insect collections, learning the harmful and beneficial insects, and proper insecticides for controlling insects.

34
72

ANNUAL
ISLE OF WIGHT COUNTY
4-H CLUB

PICNIC



MORGART'S
BEACH

MORGART'S BEACH
TUESDAY, AUG. 29, 1961

...

...

34
79

D. Forestry

a) Situation and Needs

Isle of Wight County has 79,796 acres of woodland. There are 54,299 acres in cropland. The total farm land is 139,327 acres.

Present stands consist of pine and hardwood mixtures, pure pine and scrubby hardwood mixture with merchantable and non-merchantable hardwoods. The wetter sites consist of merchantable gum and cypress. There is no economical practice for wet bottom land but to harvest timber as it matures.

There is a surplus of scrubby hardwood with no market outlet. A certain amount of hardwood is used in paper making. The wood using industries have ample supply for their own mills at present. The private landowner has no market outlet for the scrubby hardwood. There is a definite need for converting this scrubby growth to a desirable species such as loblolly pine.

We have a reasonable amount of share croppers and tenant farmers that are not interested in forestry conservation because of non-ownership. Forestry practices on the home farm among tenant farmers and ownership has made very little progress.

Forestry is a long time program and can be costly to the private landowner. This discourages the private landowner because of his investment and the time involved.

Following are forestry needs in Isle of Wight County:

1. An educational program for the youth under 20 years of age, and the private landowner
2. Plant a desirable species such as loblolly pine in eroded fields and cut over woodland, and other open areas in woodland
3. Convert scrubby hardwoods with no economical value to a desirable species
4. Encourage and motivate the private landowner to become interested in forestry
5. A better understanding of the basic forestry management practices for private landowners
6. Closer cooperation with VPI and Virginia Division of Forestry technicians
7. Control forest fires
8. More tree planters are needed for contestants in tree planting contests

- 34
72
9. An informative public relations program
 10. Improvement of communications
 11. A demonstration of direct seeding on well prepared seed beds
 12. A more active forestry club
- b) Goals for 1961
1. Have 475,000 trees planted in the county this year
 2. Have 35 contestants in the youth forestry contest
 3. Have 22 individuals plant open area or spot plant, and seed bed preparation
 4. Have 35 acres of non-merchantable scrubby hardwood deadened
 5. Find new ways to increase interest among private landowners to apply good forestry management
- c) Extension Methods
1. Planning
 - a) Have a forestry club for program planning
 - b) Select key men in different communities that are forestry minded and have them in at a dinner program planning meeting
 - c) A meeting will be held in March for program planning
 - d) Have 25 percent for the planning meeting
 - e) Contact individuals for program planning by letter and personal visits
 - f) Have officers of the club plan the meeting with extension personnel
 2. Work with Civic Clubs
 - a) Have Ruritan clubs sponsor a youth and adult forestry contest
 - b) Plan a forestry program with each of the seven Ruritan clubs
 - c) Have the presidents or forestry conservation chairmen from the different Ruritan clubs and members of the Forestry Club plan a program for 1961
 - d) Conduct individual demonstrations on recommended practices

- e) Survey different communities for contestants in the contest. Contact key people and schools in the county
- f) Assign contestants to clubs in their respective communities
- g) Provide teaching material for youth and adults, on selecting areas, poisoning and thinning
- h) Have each club invite contestants to a dinner meeting for some type of recognition
- i) Have forestry included in the county and district Ruritan program

3. Work with Industry

- a) Cooperate and offer assistance in any reasonable way to industry and private landowners in promoting public relations and educational programs
- b) Include conservation forester in forestry program and make use of him in judging contests
- c) Ask industry to furnish and provide educational material, such as poison and seedlings for contest and demonstration

d) Results

There were 254,000 trees planted in Isle of Wight county this year; enough to plant approximately 500 acres. Two hundred forty-one thousand of these trees were planted by industry. Pines were planted mostly on cut over woodland.

A forestry club planning meeting was held in the beginning of the year for the purpose of planning a forestry program for the private landowners and youth in our forestry program. Representatives from industry, private landowners, and the extension service assisted in planning this meeting.

Local communities and schools were surveyed to locate prospective contestants. Fifty-two contestants completed a small forest in their communities. The contestants were sponsored by local Ruritan clubs and invited to clubs as guests for their achievements in forestry. They received ribbons and prizes as awards for satisfactorily completed forestry work. The boy with the best quality of work on his project received a forestry plaque at the county-wide Ruritan meeting. The winning contestant from this county will compete against Southampton for a \$50 war bond and \$25 runner-up.

Twenty-four individual demonstrations were conducted on planting seedlings.

34
72

Fire control was preached on radio programs and group meetings. Cooperation was given to newspapers by supplying them with news articles.

Fifteen radio programs were conducted on forest improvement and forest establishment.

An educational program was conducted for adults on timber cruising for standing and log scaling, followed by a picnic. Fifty-one landowners were present.

Cooperation in both planning and conducting the educational program was done by Virginia Division of Forestry, private landowners, industry and the extension service.

Thirty-three acres of scrubby hardwood was deadened to make room for releasing a desirable species and planting.

Twenty-one private landowners received an explanation of the Agricultural Conservation Program to encourage forestry practices.

Two hundred fifty bulletins were distributed among private landowners showing some of the cultural methods of forestry work.

The agent offered his assistance to private landowners and civic clubs to help promote forestry.

VI. Minor Activities

A. Farm and Home Development

Mr. and Mrs. A. R. Butler had been in the dairy business for many years, along with their crop farming operations. Because of a number of problems including labor, breeding stock and management, they abandoned the dairy business. At this point the Butlers asked for assistance as to what they might do to develop their farm operations along other lines and enterprises in order to make it into a paying business. Kenneth Loope, Associate Extension Agricultural Economist, was called in for help. Since they had been in the dairy business they had dairy barns and established pasture, therefore livestock enterprises seemed to be a natural thing for them to consider. Their resources were reviewed and alternatives discussed which they might follow in developing their program. They bought beef cattle feeders, both steers and heifers, with the thought of possibly selecting the beef heifers for breeders. They also bought 100 feeder pigs to finish for market.

The agent has continued to work with farm development families. Families are continuing to make progress on their goals as time and finances permit.

In addition to farm and home development families, 62 farmers have been assisted in identifying, analyzing and solving complex interrelated problems. Included in these were peanut drying installations, conversion of dairy and poultry enterprises to hog operations and construction of new hog operations.

84
72

B. Watermelons

There appeared to be a need for some development in watermelon marketing. A Ruritan club formed a committee for this purpose. The agent and a marketing agent from the State Department of Agriculture assisted this committee in determining the needs for a market and problems in getting it established. The Ruritan committee and agents met with a number of farmers to discuss these problems and consider methods for meeting them. One market was set up on a committee basis in cooperation with a Ruritan club. Another was set up on a private auction market basis. Two markets were already in existence. The old established market in the county had been curtailed drastically because of the death of the owner and operator. A son and a partner separated and each continued operation on a small basis. Because of a very depressed market and low price for melons none of the markets operated very long. (Attached is a letter with reference to the market and a mimeograph on watermelon production practices which was mailed to watermelon growers.)

C. Poultry

The agent met with poultry committee members in January as set forth in a letter from Denver Bragg, Associate Extension Poultry Husbandman. After a lengthy discussion the opinion was that the previous poultry schools had not been meeting the needs. Some doubt was expressed as to the worthwhileness of such a school. However the group decided to plan for a school in the near future with a somewhat different type program. A sub-committee was selected to plan the program and secure speakers.

A poultry school was held in Nansemond County in March for several counties, but with very little interest from producers in this county.

Frank M. Cofer, one of our poultry producers, is in the NEPPCO Poultry Business System's Production Record.

D. Soil Samples

Soil sample recommendations required quite a bit of the agent's time. A total of 1052 soil samples were mailed in to the extension soil testing laboratory at Blacksburg during the year.

The agent attended a farmer's meeting in Carrsville in February at which the topic was The Value of Taking Soil Samples. (News article attached)

Demonstrations have been given as to correct methods of sampling soil to determine if nematodes were present. Some fields have been found to have nematodes, resulting in treatment or demonstrations.

E. Civil Defense

The agent participated in a Civil Defense emergency planning committee meeting. Requests for Civil Defense and fall-shelter information have been answered with bulletins, and cooperation with woman's clubs where

34
72
Agricultural Extension Service

of the

Virginia Polytechnic Institute

Smithfield, Virginia

April 19, 1961

TO: ISLE OF WIGHT COUNTY WATERMELON GROWERS

The State Department of Agriculture Marketing Agent and the Extension Service are assisting in establishing a watermelon market near Windsor for this year's crop.

We think that plans for a very satisfactory market have been made. We believe that watermelon growers would like to know about these plans early in order to make adjustments. Therefore, this letter is being sent to you.

Sincerely,

Walter Grizzard

Walter Grizzard
County Agent

rhr

cc: Mr. L. F. Zimmerman, Jr.
Marketing Agent, USDA

Enclosure - Watermelon Production Practices
Thumb Rules for Evaluating the 1961 Feed Grain Program

WATERMELON PRODUCTION PRACTICES

SOIL Sandy and sandy loam, well-drained and fertile.

VARIETIES:

Charleston Grey (82 days) - A long watermelon, resistant to sunburn and Fusarium wilt, and relatively high in resistance to anthracnose.

Congo (90 days) - Resistant to anthracnose, and not resistant to downy mildew or Fusarium wilt.

Dixie Queen (wilt-resistant) (85 days) - Fruits are nearly round, light green with darker mottled stripes and weigh 35 to 40 pounds. The flesh is bright red and crisp. The rind is medium thin, tough and will stand shipping, although it may be best for local markets and for home use.

FERTILIZING With manure 400 pounds of 5-10-10; without manure 600 pounds of 5-10-10. When runners start, sidedress with 300 pounds of 10-10-10.

LIME 5.5 appears best. Range 5.0 - 6.0.

PLANTING TIME When all damaging frost has passed and the soil is warm. (April 15 - May 15)

SPACING About 10 X 10 feet is a popular space to fit equipment.

WEED CONTROL Cultivation. Chemicals; 3 pounds of Alanap-1 in 50 gallons of water per acre immediately after seeding.

DISEASE CONTROL Rotate crop. Plant disease resistant varieties.

INSECT CONTROL Insects should be controlled from the time the plants begin coming up until they mature. The most common insects attacking watermelons are the striped and spotted cucumber beetle and the melon aphid. Dusting or spraying with Malathion will give satisfactory control.

To dust, use 35 to 40 pounds per acre of 4% Malathion or 1% Parathion.

To spray, use 2 pounds of 25% Malathion wettable powder, or 2 pounds of 15% Parathion wettable powder in 70 to 100 gallons of water per acre.

Also these three may be used: Methoxychlor, Dieldrin, and Diazinon.

For Pickleworm and Squash Vine Borer, use Lindane.

APRIL 1961

Walter Grizzard
County Agent

The Virginian-Pilot

The Portsmouth Star

SUFFOLK

SECTION H

Women's News Page 2
Innocence on Highway Page 3
Smoke Eaters Get Protection ... Page 3
Farm News Page 4

Farmers Meet City Fol

Cracker-Barrel Talk



L. E. Pettyjohn answering a farmer's question. He speaks their language.

By CHARLES C. RODEFFER
Virginian-Pilot Staff Writer

COLASSE — Raymond Dar-

him at all. He's just trying to be of public service.

The farmers enjoy the cozy, informal tone of things. They

tax re-
since l-
they re-
ropes.



Farmers listen in Raymond Darden's store to lecture on the farm outlook. Owner is seated in counter recess near scale at right behind man in steel garden chair.

Virginian-Pilot Photos by Rodeffer



g demonstrates a den, who has just ASC board mem-

speakers were arranged through Civil Defense offices.

The senior woman's club conducted a public meeting on Civil Defense for any and all citizens, with special invitations to all county officials and professional workers.

F. 4-H Activities

The agent accompanied 4-H club delegates to Blacksburg for the State Short Course in June, and assisted the Extension staff in conducting this program. The county livestock judging team brought back a good record. They placed seventh or about half-way in the group of teams. One individual placed sixth. The boys had an off day as they blew up some of the classes. They usually do better.

Other 4-H events in which the agent participated or attended were: 4-H Achievement Program, annual 4-H Camp Farrar meeting, 4-H Automotive project meeting in Portsmouth, county-wide annual 4-H recreational party, 4-H District Contest in Petersburg, annual county-wide 4-H picnic, and an Outdoor Cookery project meeting of the Bartlett and Bethany 4-H Clubs.

G. Rural Areas Development

The agents participated in a workshop at Virginia Beach on Rural Areas Development in September and a meeting in Petersburg in November. Dr. Donald R. Fessler, Extension Sociologist, was in the county November 23 to assist the agents in a plan to begin the Rural Areas Development program in the county.

The office staff has met to make plans and have asked the technical panel for a suitable date to meet.

H. Miscellaneous

An office staff meeting was held in September to select people in the county to be invited to attend the meeting in Norfolk on Virginia's Changing Agriculture. Persons who were invited to this area meeting were visited and they responded very favorably. Three women and ten men from Isle of Wight attended.

During the month of December the agent worked with the Farmers Home Administration in planning and financing a farm operation for 1961.

All A.S.C.S. monthly meetings were attended by the agent and many of the call meetings, especially those in which the agent could contribute to the meeting as a resource person.

Kenneth Loope, Associate Extension Agricultural Economist, was in the county two days to assist in farm cost account analysis records. Three farmers were assisted.

34
72

The agent assisted a manufacturer of lime from oyster shells for agriculture purposes in preparing a formula for adding magnesium. W. W. Lewis, Extension Agronomist, and Maurice R. Rowe, Supervisor of Fertilizer, State Department of Agriculture, also aided in this project.

A farmer in the county is a member of the advisory committee of the VPI School of Agriculture by virtue of the fact that he is president of the State Farmer's Union. He has discussed several times with the agent the program of the school of agriculture.

A survey was made with reference to a cannery being established in the county and the possibility of using the Niki-Site if and when it was abandoned. This project did not materialize because of lack of interest and size of capital outlay.

The county directors of the Virginia Peanut and Hog Growers Association were visited and plans were made for their business meeting to reorganize for 1961.

Paul L. Smeal, Associate Extension Horticulturist, assisted the agent with landscaping problems in March.

The state disinfectant machine has been scheduled for use in the county a number of times this year.

I. Calendar of Work (Some Special Events)

The following organizations meet monthly and are not listed: A.S.C.S., S.C.S., Ruritan and eleven 4-H Clubs.

Dec. 3 - 4-H Television Broadcast - Smithfield
Dec. 10 - 4-H Achievement Program - Isle of Wight
Dec. 27 - Feeder Pig Sale Problems - Courtland
Jan. 12 - Annual 4-H Camp Farrar Meeting - Courtland
Jan. 16 - Peanut & Hog Growers' Directors - Courtland
Jan. 18 - Agronomy School - Franklin
Jan. 19 - Hampshire Sale - Courtland
Jan. 26 - Farm Meeting at Darden's Store - Carrsville
Feb. 1 - Registered Hog Sale - Courtland
Feb. 6 - Feeder Pig Meeting - Franklin
Feb. 9 - Automotive Project Meeting - Portsmouth
Feb. 14 - Purebred Hampshire Sale - Courtland
Feb. 23 - Mechanized Peanut Harvesting - Isle of Wight
Mar. 6 - Royster Fertilizer Meeting - Smithfield
Mar. 11 - County 4-H Dance - Windsor
Mar. 14 - Ruritan Meeting (Special) - Benns Church
Mar. 15 - Livestock School - Windsor
Mar. 17 - 4-H Camp Meeting - Windsor
Mar. 18 - Jr. Market Hog Show & Sale - Smithfield
Mar. 21 - Baby Beef Meeting - Smithfield (office)
Apr. 6 - Feed Grain Program - Courtland
Apr. 7 - Feed Grain Meeting - Isle of Wight
Apr. 13 - Feed Grain Meeting - Carrsville
Apr. 15 - 4-H District Contest
Apr. 17 - Feed Grain Meeting - Isle of Wight
Apr. 19 - Farm Bureau Meeting - Carrsville
Apr. 25 - Baby Beef Show - Smithfield
Apr. 28 - County Emergency Planning Meeting - Isle of Wight
May 1 - Peanut Seed Tag Importance - Courtland
May 10 - Lamb Pool Sale - Smithfield
May 24 - Swine Planning Meeting - Suffolk
May 26 - Hog Production - Holland
June 9 - Wool Pool Sale - Franklin
June 12 - Farm Bureau Meeting - Suffolk
June 13 - Special Ruritan Meeting - Carrsville
June 15 - Demonstration - Holland Experiment Station
June 17 - Southern Corn Rootworm Control - Holland Experiment Station
June 23 - 4-H All-Star Conference Weekend - Virginia Beach
June 26 - State 4-H Short Course Week - Blacksburg
July 5 - Lamb Pool Sale - Smithfield
July 10 - State Jersey Field Day - Smithfield
July 15 - All-Star Weekend - Virginia Beach
July 18 - 19 - Grain Handling Show - Suffolk
July 21 - Peanut Grading Equipment - Suffolk
July 24 - Hampshire Sale - Courtland
July 29 - Forestry Field Day - Carrsville
Aug. 1 - 4 - Institute of Rural Affairs - Blacksburg
Aug. 2 - All-Breed Hog Sale - Courtland

34
72

Aug. 7 - 11 - Senior 4-H Camp - Virginia Beach
Aug. 9 - 10 - Annual Market Hog Show - Courtland
Aug.16 - County-wide Ruritan Meeting - Windsor
Aug.18 - Special Purebred Swine Sale - Courtland
Aug.21 - 25 - Annual Extension Conference - Blacksburg
Aug.23 - Farm Bureau Annual Meeting - Smithfield
Aug.29 - Annual 4-H County Picnic - Smithfield
Aug.29 - Wheat Program - Courtland
Aug.30 - Planning for Commercial Gilt & Spotlight Sale - Franklin
Aug.31 - Peanut Harvesting and Drying Demonstration - Suffolk
Sept. 6 - Feed Grain Program - Isle of Wight
Sept. 7 - Feed Grain Program - Isle of Wight
Sept. 9 - Peanut & Hog Growers Annual Meeting - Courtland
Sept. 12 - 15 - Group Dynamics Workshop - Virginia Beach
Sept. 14 - Livestock Committee Meeting - Smithfield (office)
Sept. 19 - 4-H Baby Beef Meeting - Smithfield
Oct. 3 - Livestock Community Meeting - Carrollton
Oct. 4 - Livestock Community Meeting - Smithfield
Oct. 5 - Livestock Community Meeting - Longview
Oct. 7 - Feeder Cattle Sale - Smithfield
Oct. 19 - Forage Crop Meeting - Suffolk
Oct. 20 - 4-H Club Organization - Suffolk
Oct. 30 - Virginia's Changing Agriculture - Norfolk
Oct. 31 - Minimum Tillage Demonstration - Holland
Nov. 10 - Rural Areas Development - Petersburg
Nov. 15 - Corn Achievement Program - Isle of Wight
Nov. 22 - Planning Rural Areas Development - Smithfield (office)