

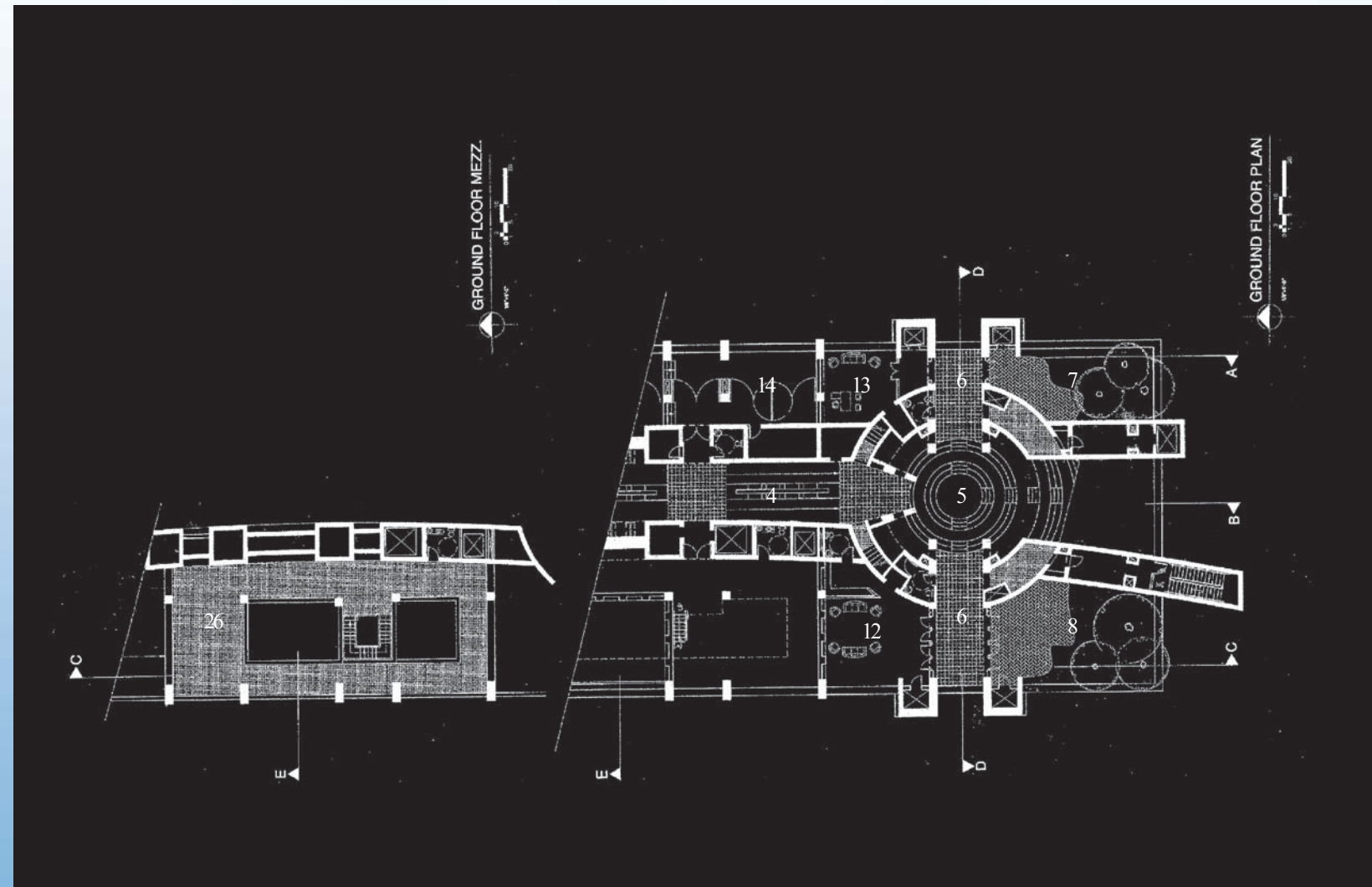
Ground Floor Plan  
Key

- 4 Gallery Hall "Main Street"
- 5 Meditation Chapel
- 6 Garden Promenade
- 7 Meditation Garden
- 8 Memorial Garden
- 12 Funerary Family Lounge
- 13 Spiritual Counseling Office
- 14 Art Gallery
- 26 Running Track

There are two parking garage levels below the ground floor

*Since the inside is different from the outside, the wall – the point of change becomes an architectural event. Architecture occurs at the meeting of interior and exterior forces of use and space. Architecture as the wall between the inside and outside becomes the spatial record of this resolution and its drama.*

*Robert Venturi*



*Process Model: View of Sacred Wing at South of site*

### Body- Research Wing

The Holistic Center is not a shelter where people go to die. Residents of the Center celebrate life each and every day. Programs and activities center on improving the resident's emotional, physical, and spiritual well-being. The entire East wing of the Holistic Center is dedicated to physical and mental well-being. The research wing of the Center houses doctor's offices, research facilities, social service offices, hospital liaison centers and a large pharmacy. This wing also houses the offices of alternative medicine practitioners and a full service day spa featuring a hair salon, barber shop and massage center. The entire research wing including the Library Hall is open to in-house residents, out-patient residents and neighborhood citizens.

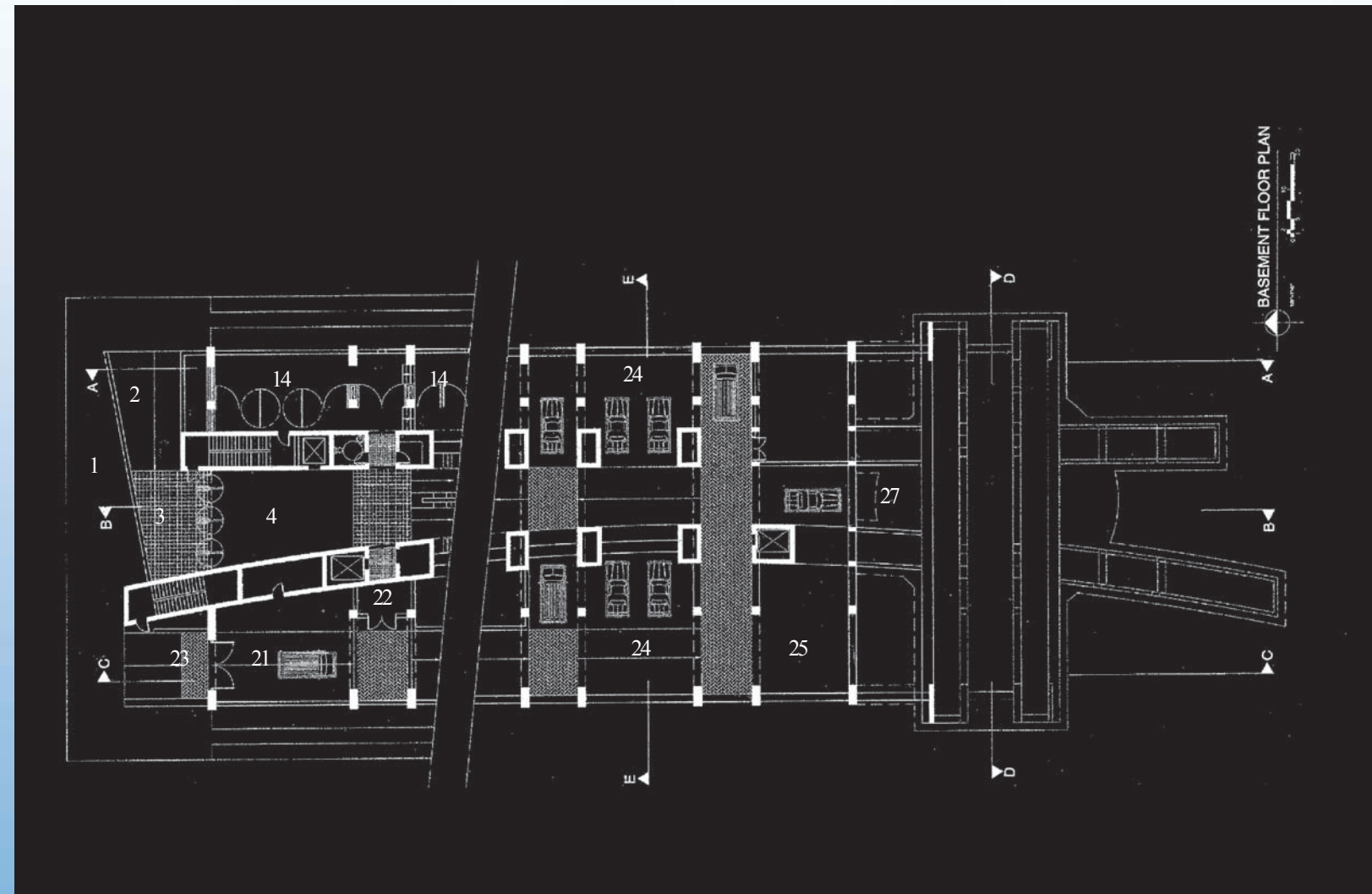
Health care professionals should place more importance on how hospital and health care environments affect wellness. Most of us are familiar with the atmosphere of our city's hospitals. Many have not been renovated in at least 20 years. The interior finishes and architectural elements are easy to disinfect but are cold and hard. The floors are often terrazzo or vinyl tile; the walls are antiseptic white; fabrics are drab; plants are non-existent; lights are fluorescent, windows are too high and views out are un-inspiring. All these things make a hospital, in general, and the waiting areas and the patient rooms, in particular, seem unfriendly, dreary, unclean, and uncomfortable.

Basement Floor Plan  
Key

- 1 North Plaza
- 2 North Ramp
- 3 North Vestibule
- 4 Great Hall "Main Street"
- 14 Art Gallery
- 21 Garage Ramp
- 22 Resident Drop-Off
- 23 Garage Entrance
- 24 Parking
- 25 Loading
- 27 Mechanical and Electrical rooms

*The plan of a building should be read like a harmony of spaces in light. Even a space intended to be dark should have just enough light from some mysterious opening to tell us how dark it really is. Each space must be defined by its structure and the character of its natural light.*

*Louis Kahn*



*Process Model: View of Meditation Chapel*

The Research Wing is slightly smaller than the Residence Wing although it shares similar design characteristics. Each office suite has a group gathering or waiting space offering views of the city. Each suite has a separate entrance directly off the Library Hall. Treatment rooms within the Research Wing are designed to make the residents feel as if they are in a private doctor's office and not in a hospital room. Antiseptic white walls are replaced with calm, soothing pastel colors. Rather than drab flat white ceilings, the treatment rooms have coffered dropped ceilings. Carpeting covers the floors of the Research Wing. Laminated natural cork covers the floor of the treatment rooms. The carpeting and cork flooring gives the rooms a warm and inviting feeling, yet remains easy to clean.

Typical fluorescent lighting is replaced by incandescent and natural lighting. Natural day lighting filters into each treatment room through a brise soleil and a series of French doors. The doctor's office and treatment room have access to a private balcony featuring a wood slat brise soleil for privacy. Each apartment balcony serves as a visual transition space or threshold connecting the building to the energy of the city. Sweeping views of the community of Dupont Circle are energizing and provide nourishment for the mind and body.

A well-designed, attractive facility can actually aid a patient's recovery. Patients are comforted by a soothing, warm and well-lit facility. Patients who feel at ease can focus on healing themselves mentally, spiritually and physically. I have designed public, semi-private and private spaces in the Holistic Center that promote social, mental and physical activity.