

FOR ME AND MY FRIENDS

BY

EDWARD DE LA TORRE

THESIS SUBMITTED TO THE FACULTY OF THE  
VIRGINIA POLYTECHNIC INSTITUTE AND STATE UNIVERSITY  
IN PARTIAL FULFILLMENT OF THE REQUIREMENTS FOR THE DEGREE OF  
MASTER OF ARCHITECTURE

APPROVED:

---

OLIVIO C. FERRARI,

CHAIRMAN

---

ROBERT J. DUNAY

---

DONNA W. DUNAY

JUNE, 1985

BLACKSBURG, VIRGINIA

FOR ME AND MY FRIENDS

BY

EDWARD DE LA TORRE

(ABSTRACT)

WHEN ONE THINKS OF AN ARCHITECT, ONE USUALLY VISUALIZES  
A BUILDING; ITS FACADES, MATERIALS AND SPACES WITHIN.  
ARCHITECTS, HOWEVER, HAVE SHOWN AN INTEREST IN INTERIOR  
AND ACCESSORY DESIGN FOR DECADES. FURNITURE, LAMPS,  
RUGS, CERAMICS, FLATWEAR, AND MORE ARE COMPONENTS THAT  
ALLOW AN ARCHITECT TO MAKE A MORE COHESIVE STATEMENT  
ABOUT HIS OR HER ARCHITECTURE.

FOR , MY WIFE.

WITHOUT HER LOVE, PRAYERS, AND SACRIFICE,

THIS WOULD NOT HAVE BEEN POSSIBLE.

|                       |    |
|-----------------------|----|
| FOR JOHN AND DEBBIE   | 1  |
| FOR SEAN              | 15 |
| FOR MEGHAN AND ELI    | 20 |
| FOR MARY              | 24 |
| FOR MANUEL AND NELLIE | 27 |
| FOR BUDDY             | 31 |
| FOR DAYSPRING         | 34 |
| VITA                  | 37 |

# TABLE OF CONTENTS

LOCATED DUE SOUTH OF DOWNTOWN BLACKSBURG, DRAPER-PRESTON IS A RESIDENTIAL COMMUNITY TANGENTIAL TO THE VIRGINIA TECH CAMPUS AT ITS SOUTHEAST CORNER. DATING BACK TO THE TURN OF THE TWENTIETH CENTURY, THE HOMES IN DRAPER-PRESTON ARE LARGE AND STATELY, EVOKING A PAST THAT WAS ELEGANT AND RICH. IT IS HERE, AT THE CORNER OF DRAPER ROAD AND EAKIN STREET, WHERE THIS PROJECT IS LOCATED.

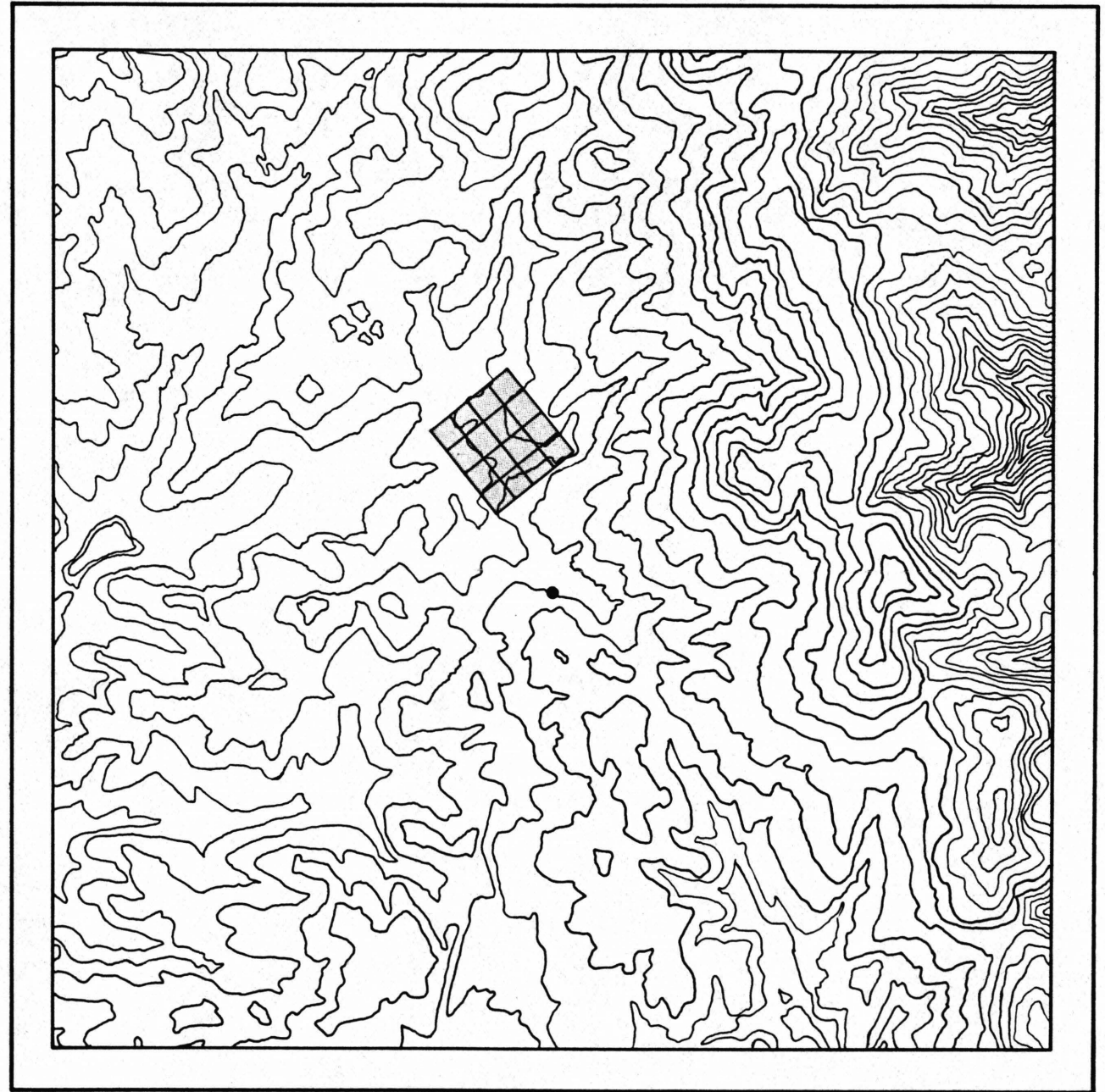
WHEN THE AUTOMOBILE WAS INTRODUCED TO BLACKSBURG IN THE EARLY 1920'S, DRAPER-PRESTON WAS ONE OF THE FIRST LOCAL AREAS TO DEAL WITH THE PROBLEMS OF OWNING AN AUTOMOBILE. DELICATE MACHINES THAT THEY WERE, THE EARLIEST AUTOMOBILES REQUIRED SHELTER; HENCE, SMALL GARAGES, EITHER ATTACHED OR LOCATED CLOSE TO THE VARIOUS HOMES WERE BUILT. THE PLAN OF DRAPER-PRESTON SHOWS THAT THE MAJORITY OF HOMES THERE INCLUDE THIS SMALL SHELTER.

THE FAMILY THAT ORIGINALLY LIVED AT THE CORNER OF DRAPER AND EAKIN WERE APPARENTLY WEALTHY ENOUGH TO OWN TWO AUTOMOBILES. THEIR TWO-CAR GARAGE IS A SIMPLE SQUARE STRUCTURE DETACHED FROM THE MAIN HOUSE. TAKING ADVANTAGE OF THEIR CLOSE PROXIMITY TO THE VIRGINIA TECH CAMPUS, THE CURRENT OWNERS DECIDED TO CONVERT IT INTO AN APARTMENT FOR THE USE OF A UNIVERSITY STUDENT.

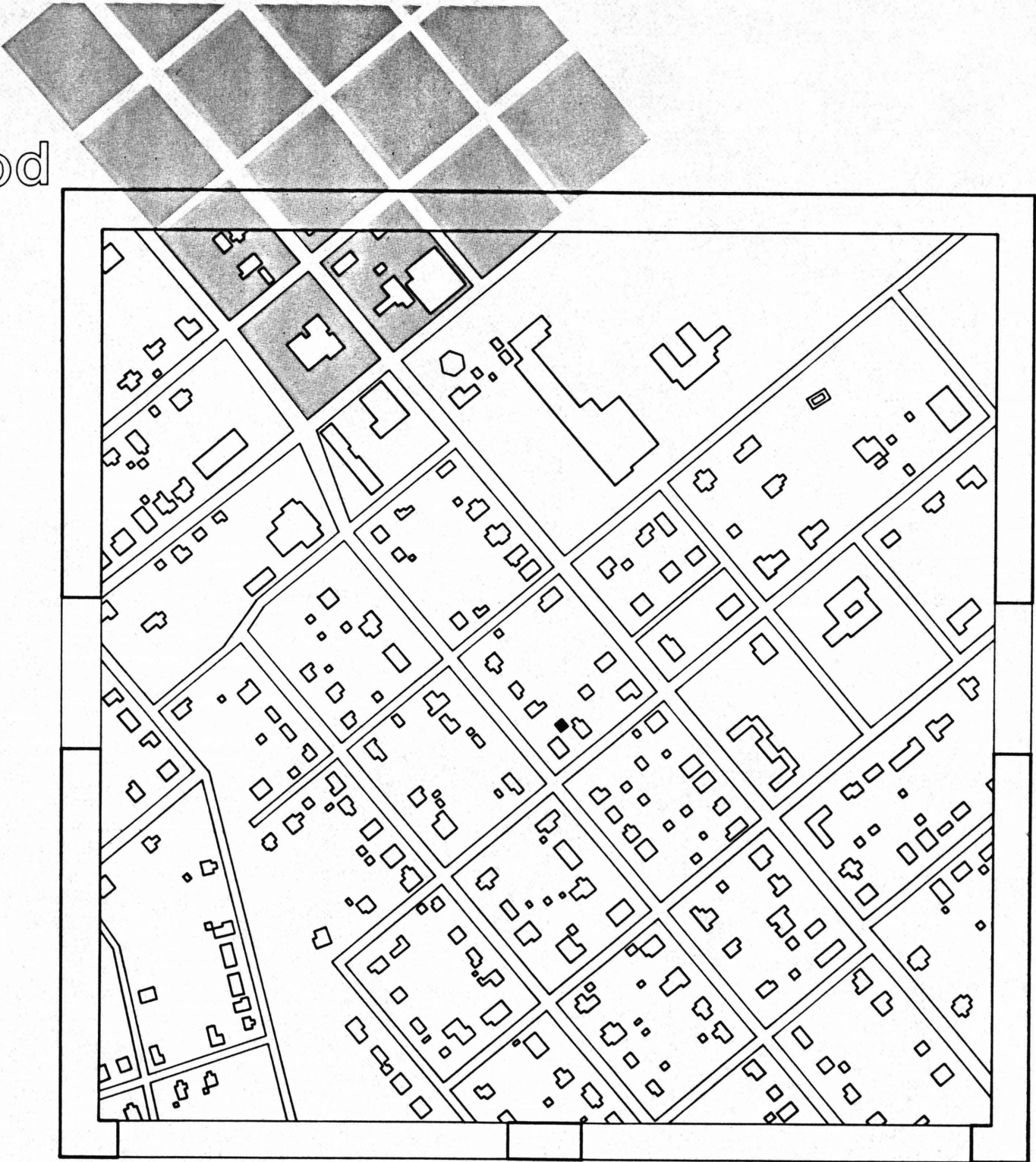
FOR JOHN AND DEBBIE



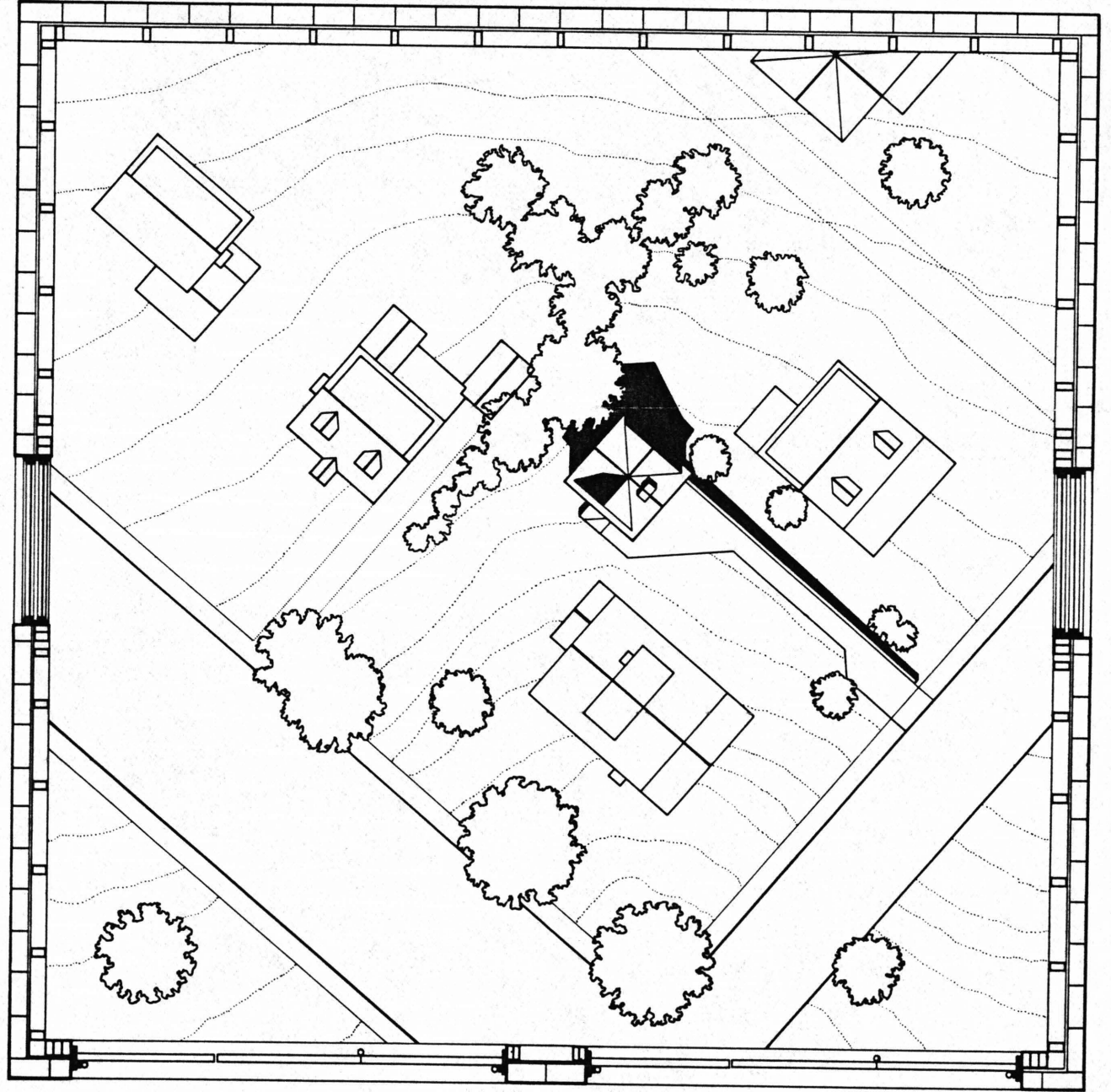
region



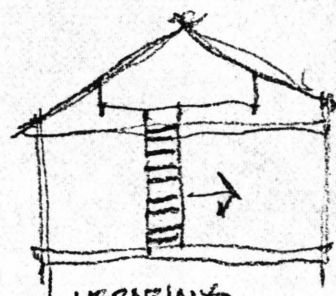
neighborhood



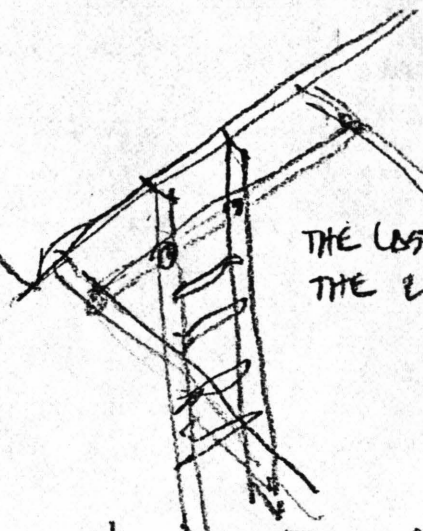
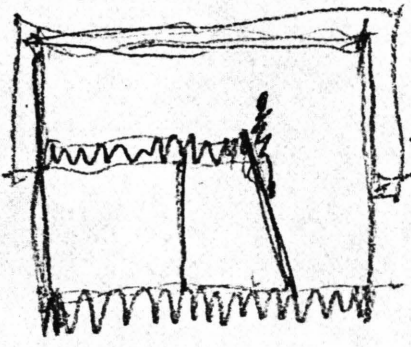
site



HOW DO YOU GET UP TO THE LOFT?

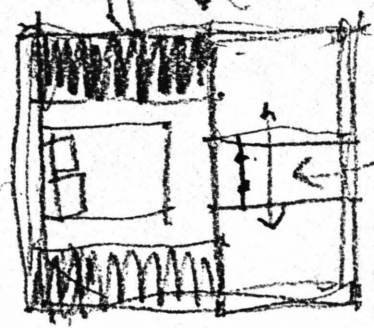
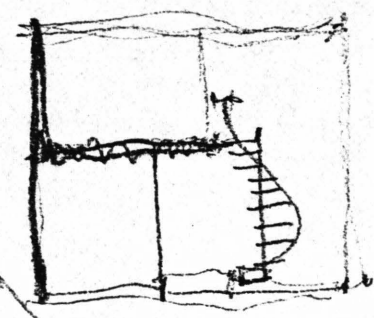
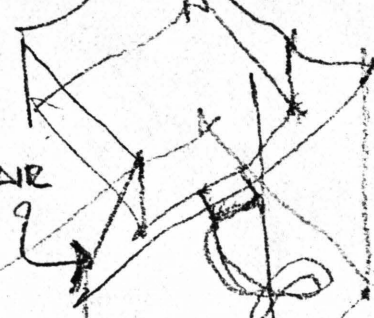


LIBRARIAN'S LADDER.

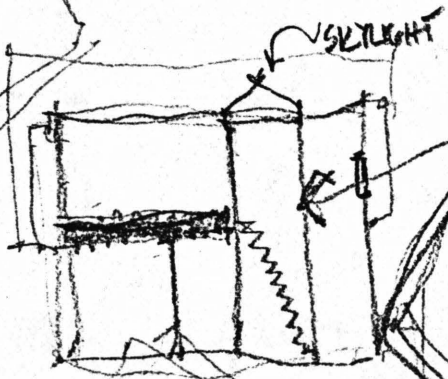
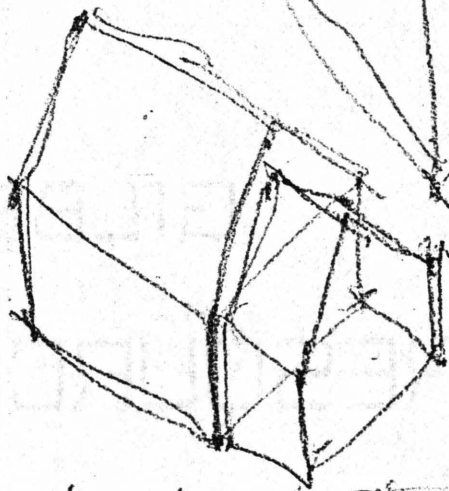


THE LAST BEAM IS THE LATERAL BRIDGE

SPIRAL STAIR



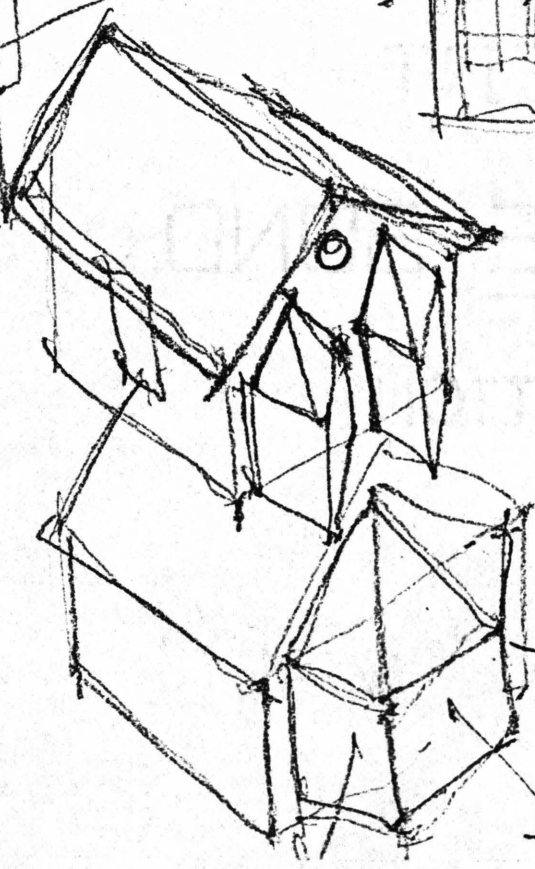
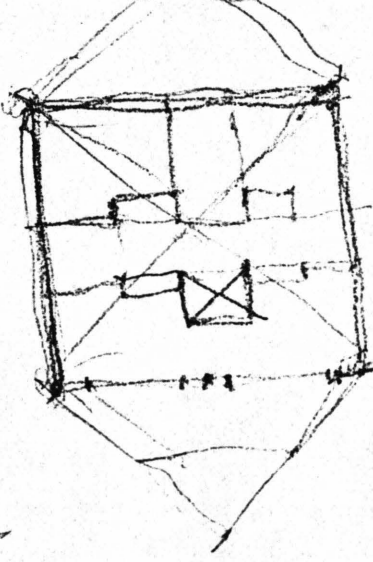
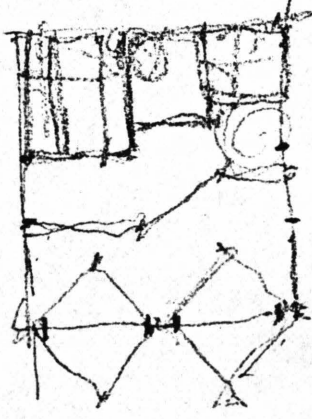
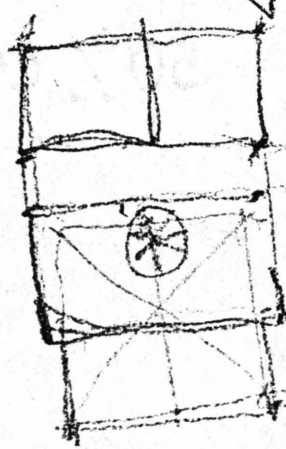
LADDER



SKYLIGHT



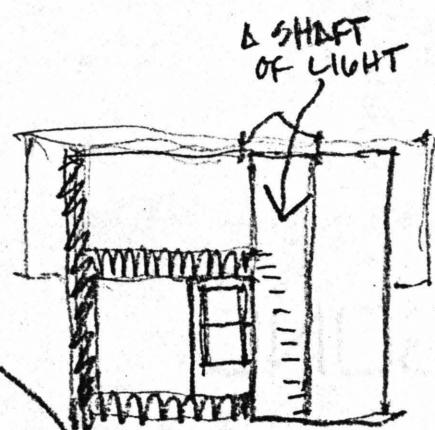
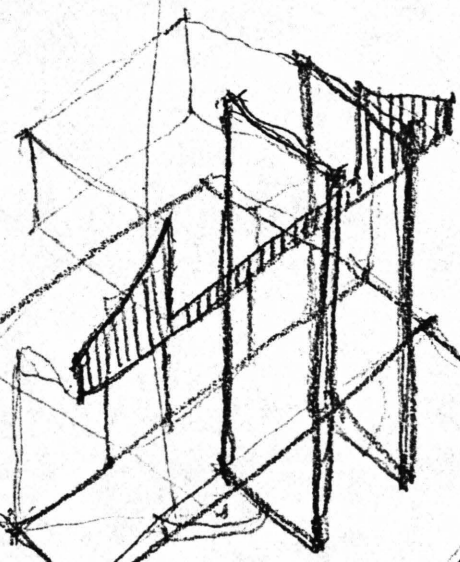
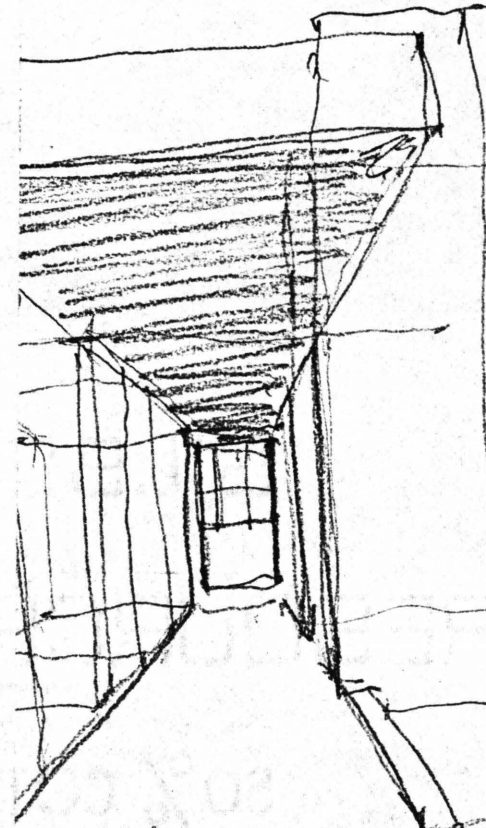
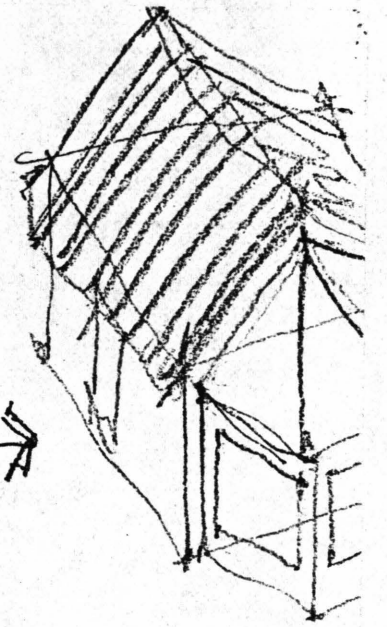
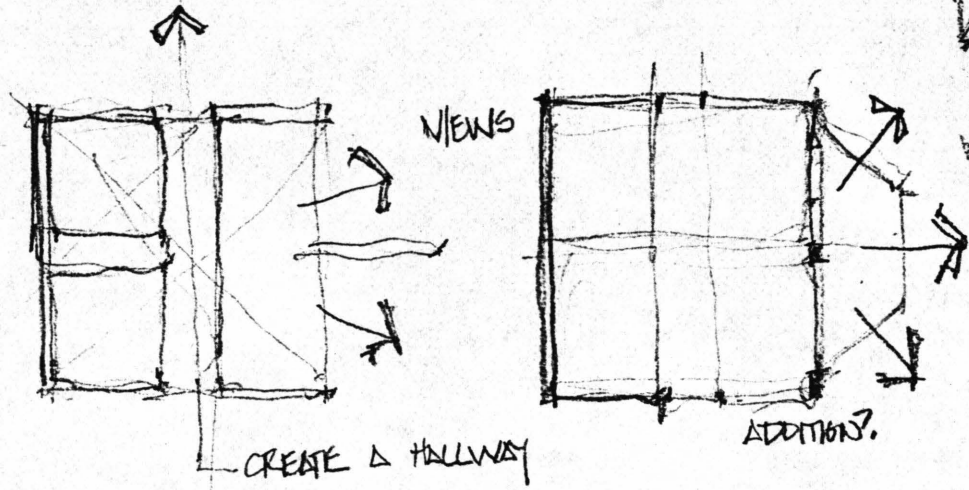
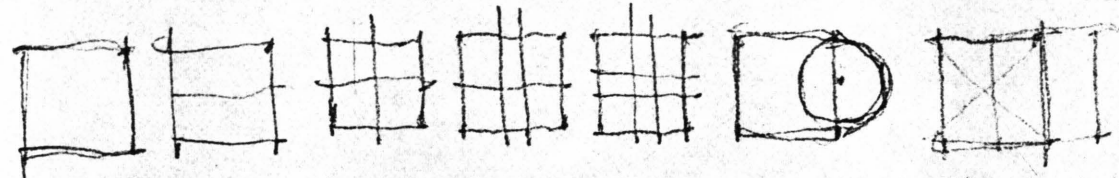
HOUSE!



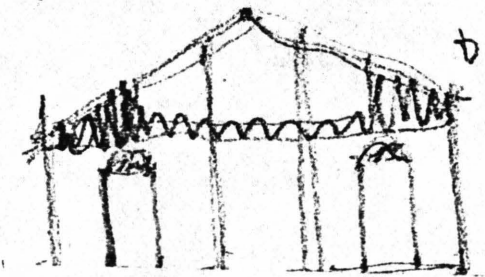
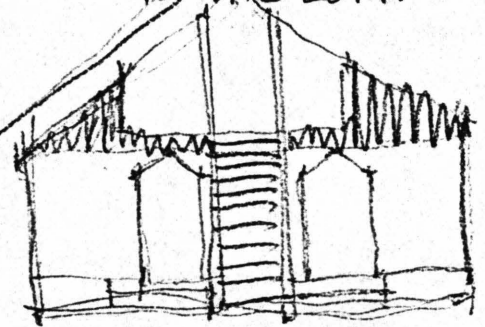
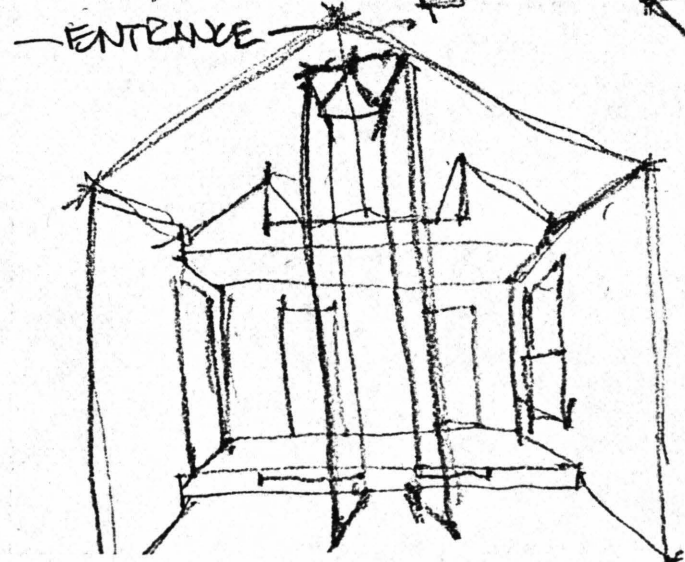
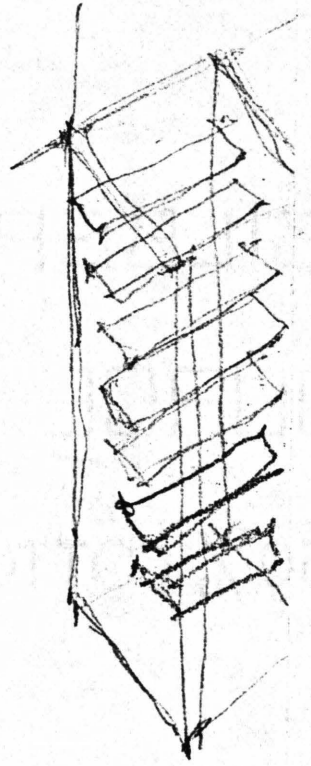
NO VIEW

ADDITIONS

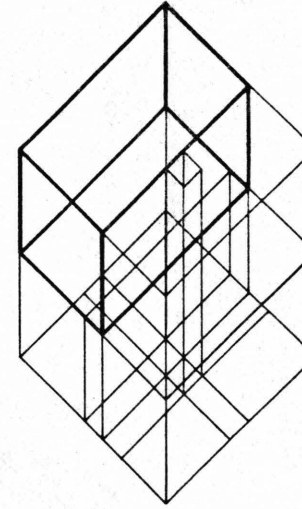
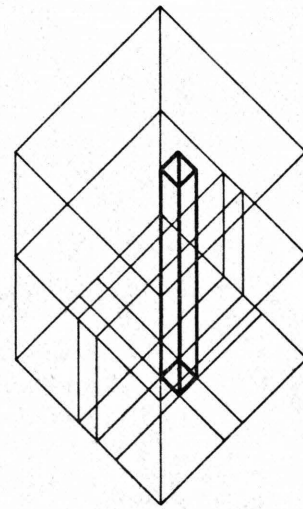
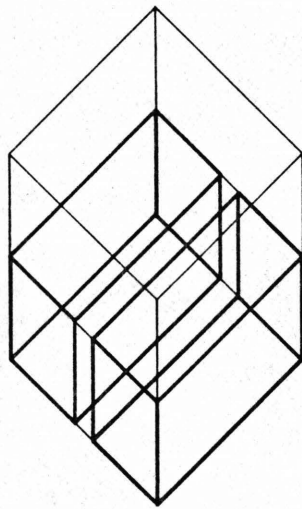
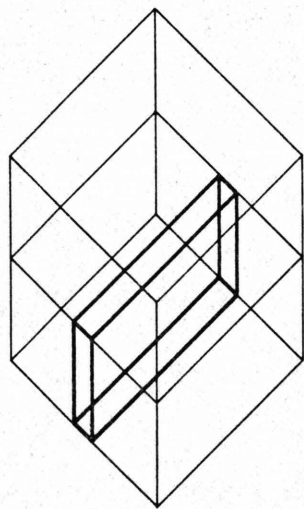
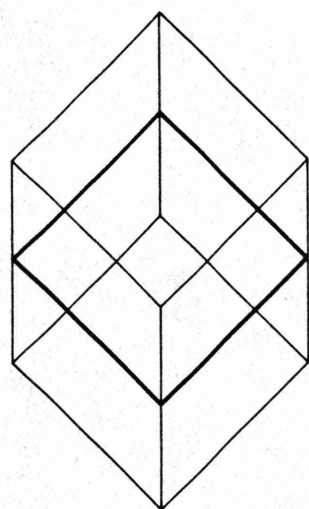
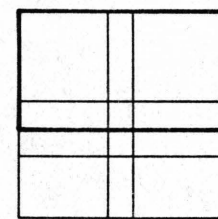
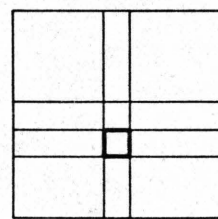
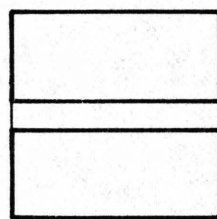
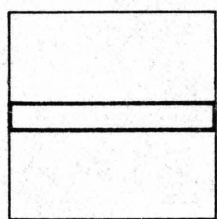
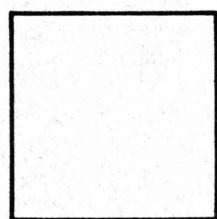
- LIVING
- DINING
- SLEEPING
- KITCHEN
- BATH
- STORAGE

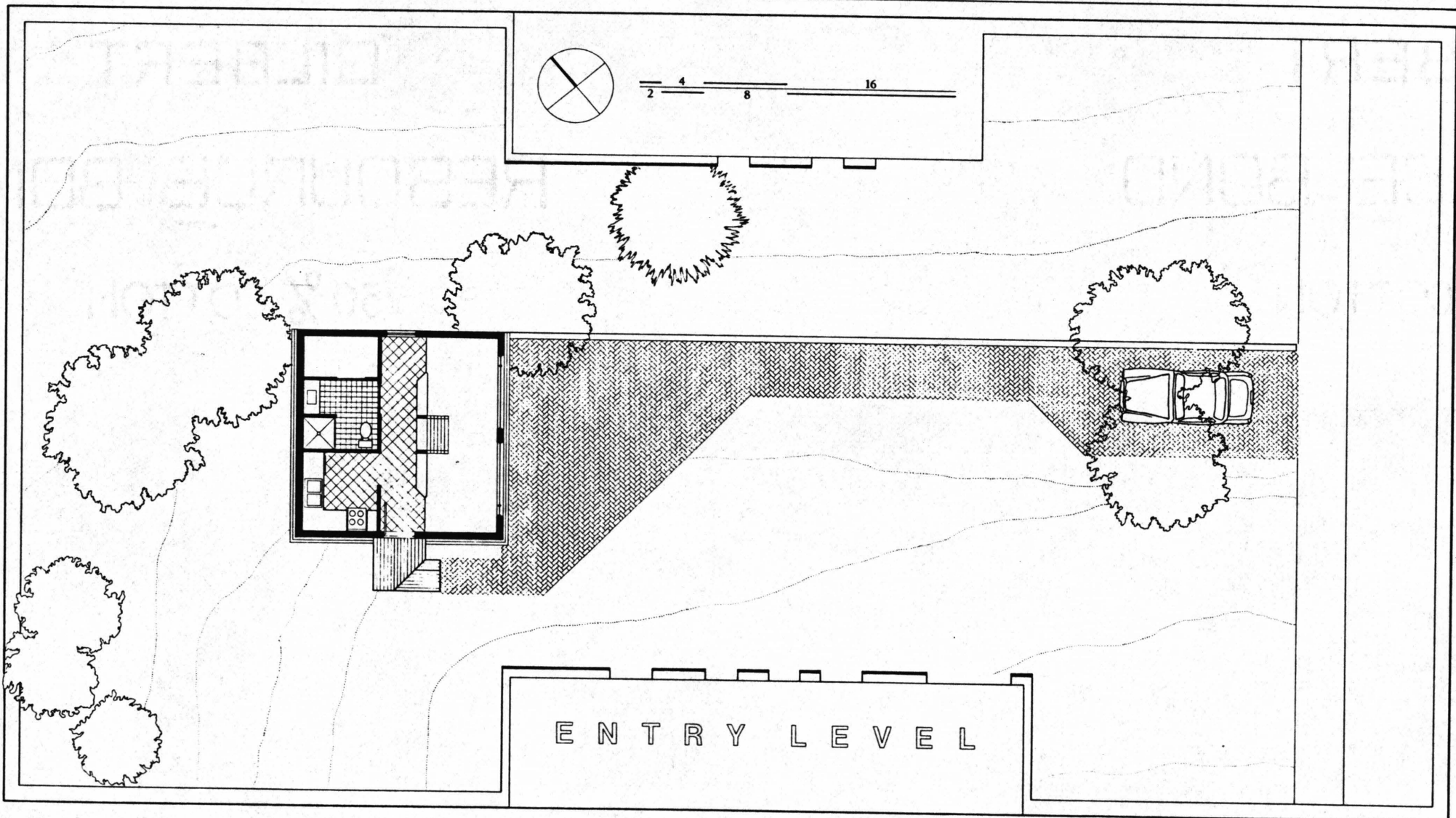
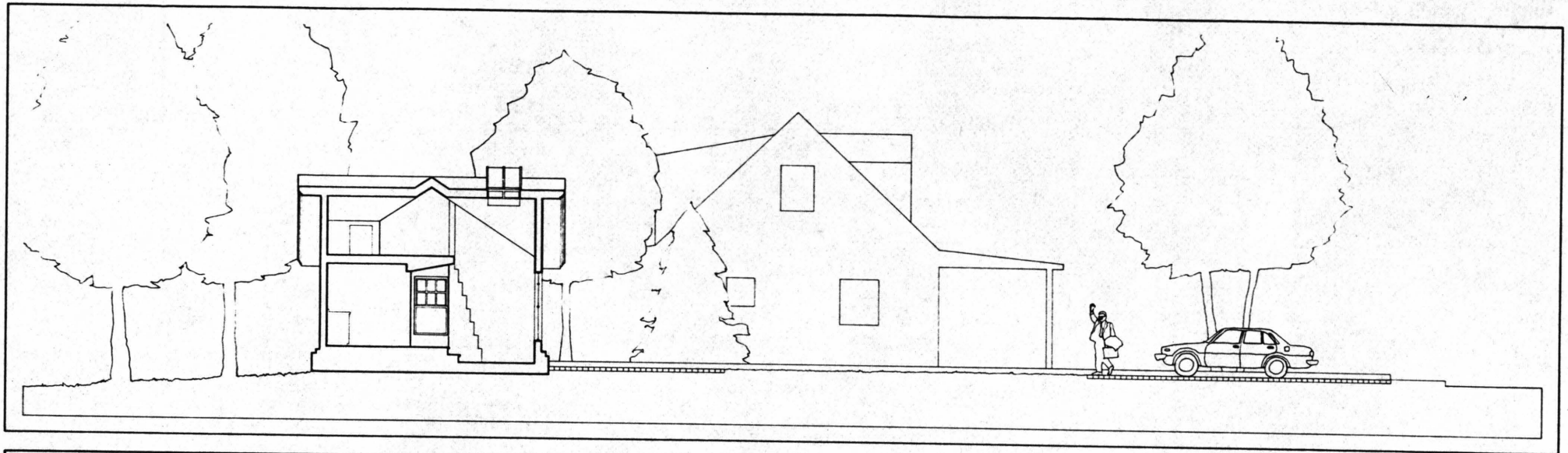


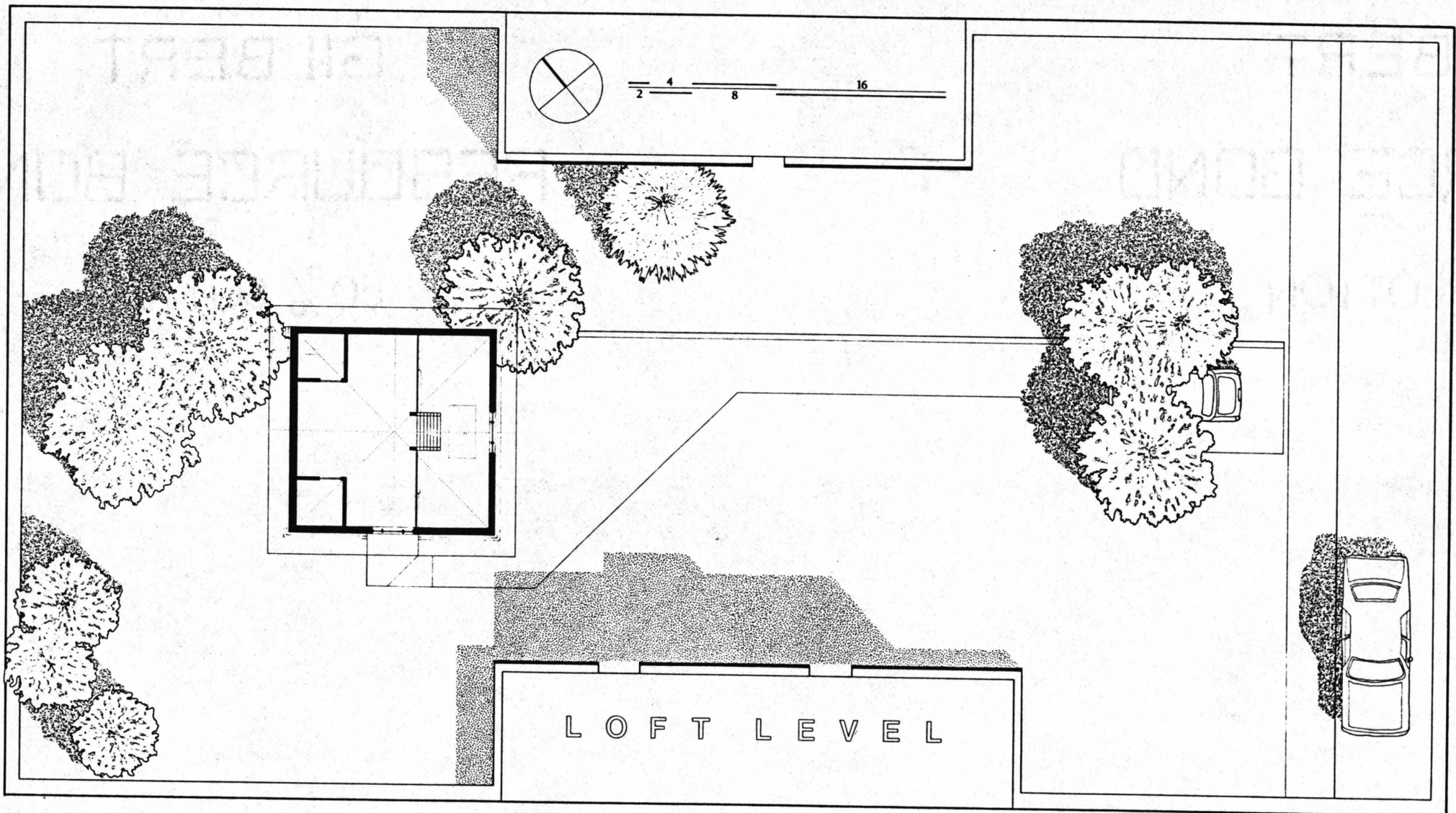
A LADDER STAIR UP TO THE LOFT.

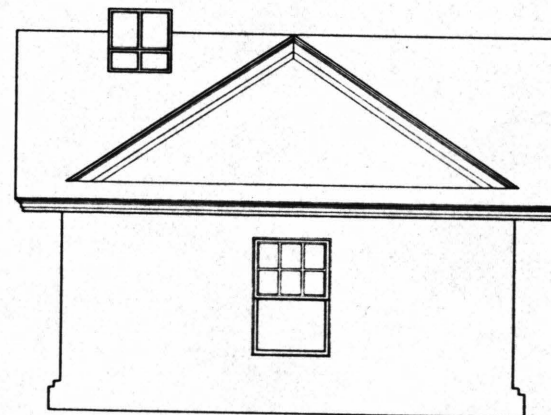
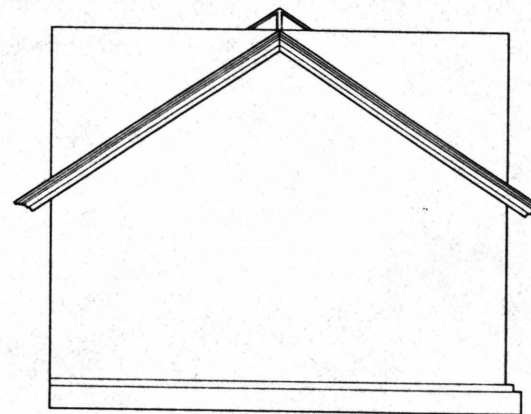
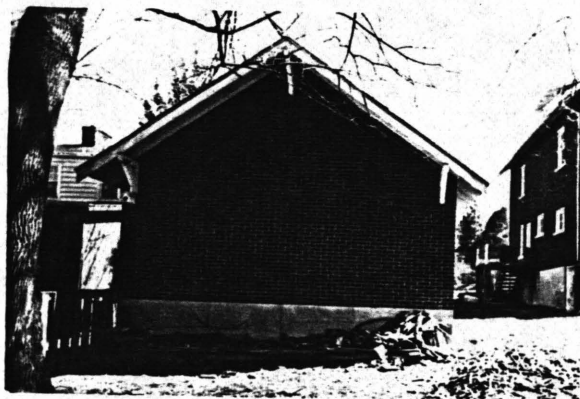
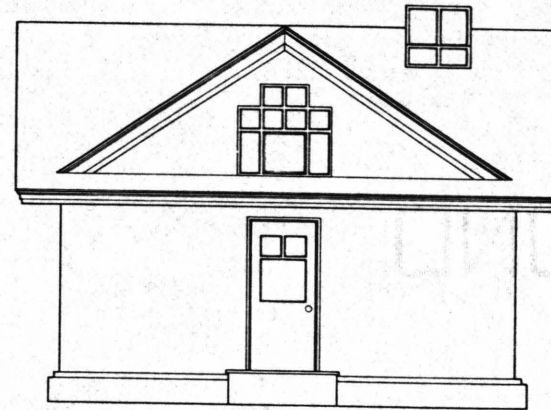
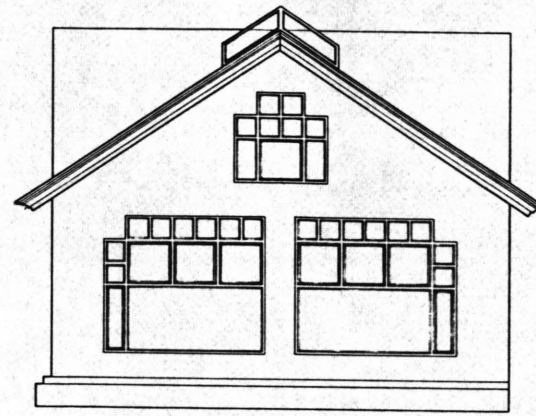
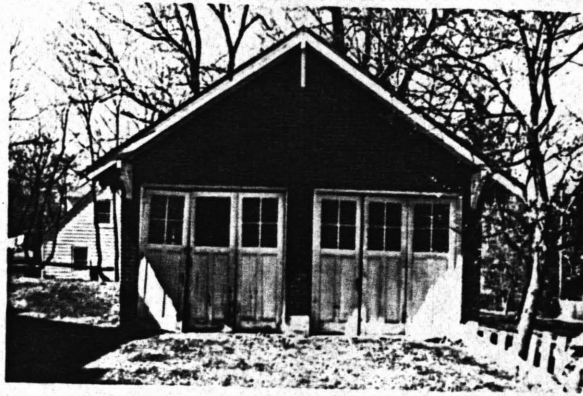


doorway



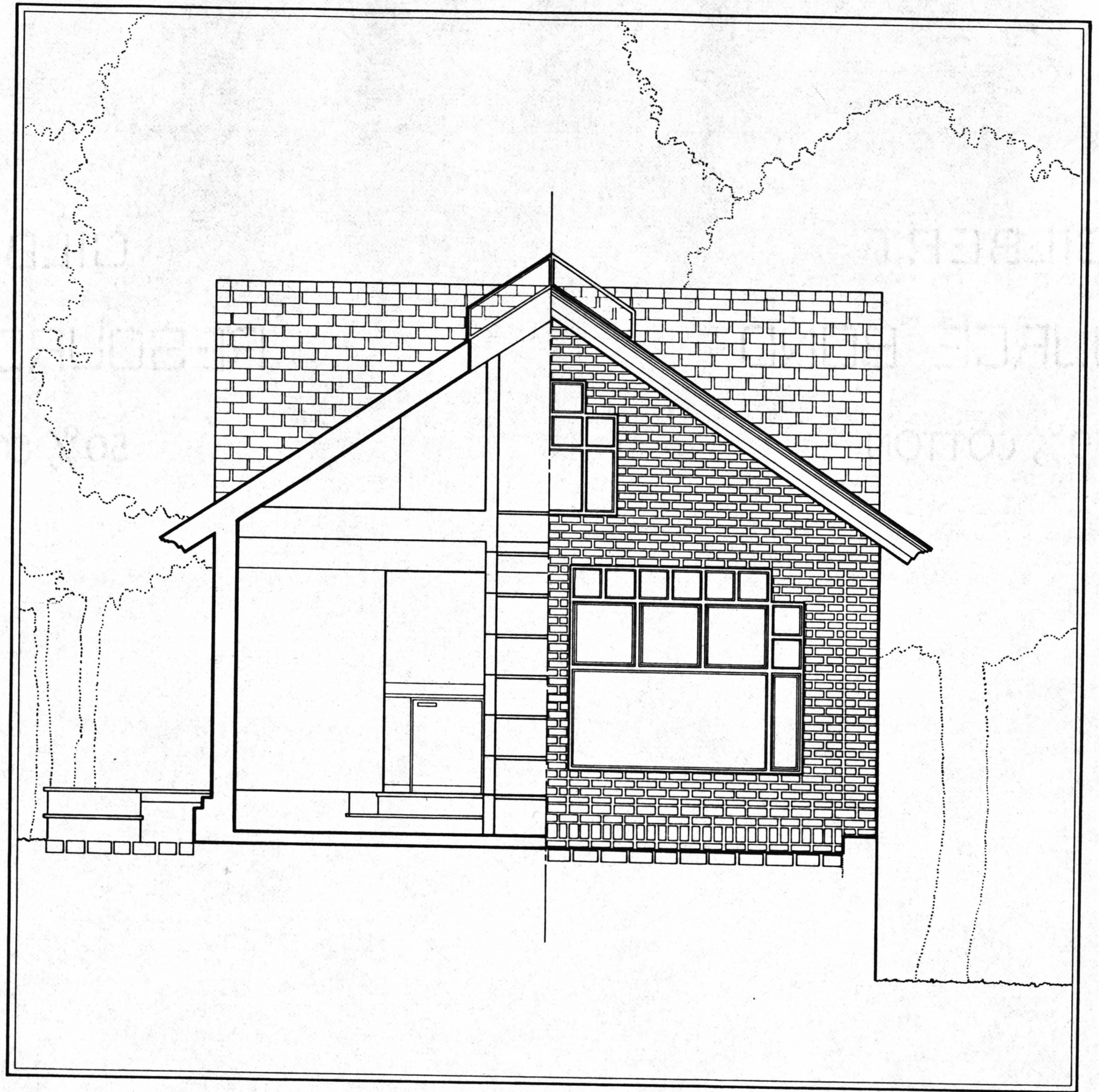


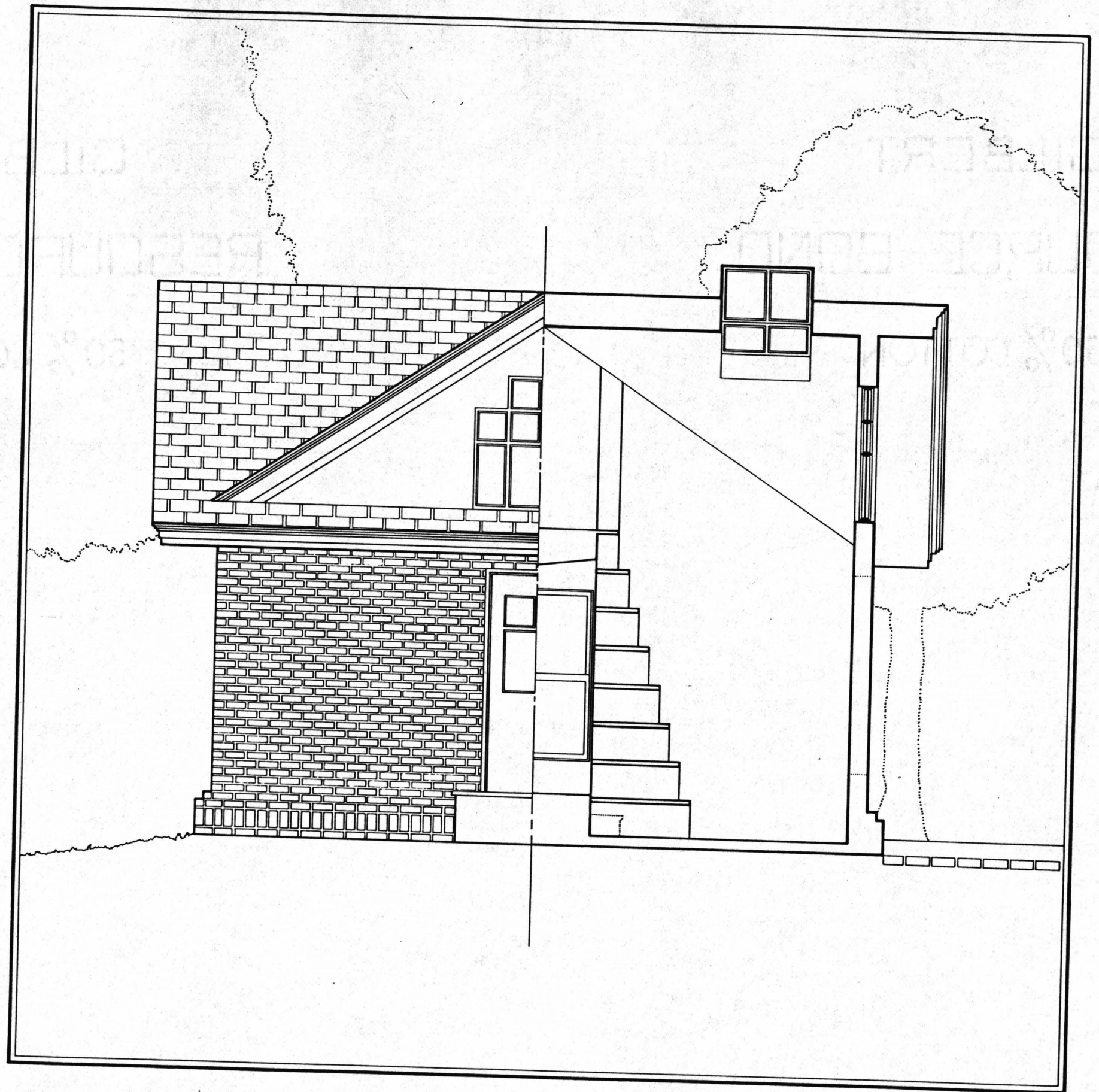


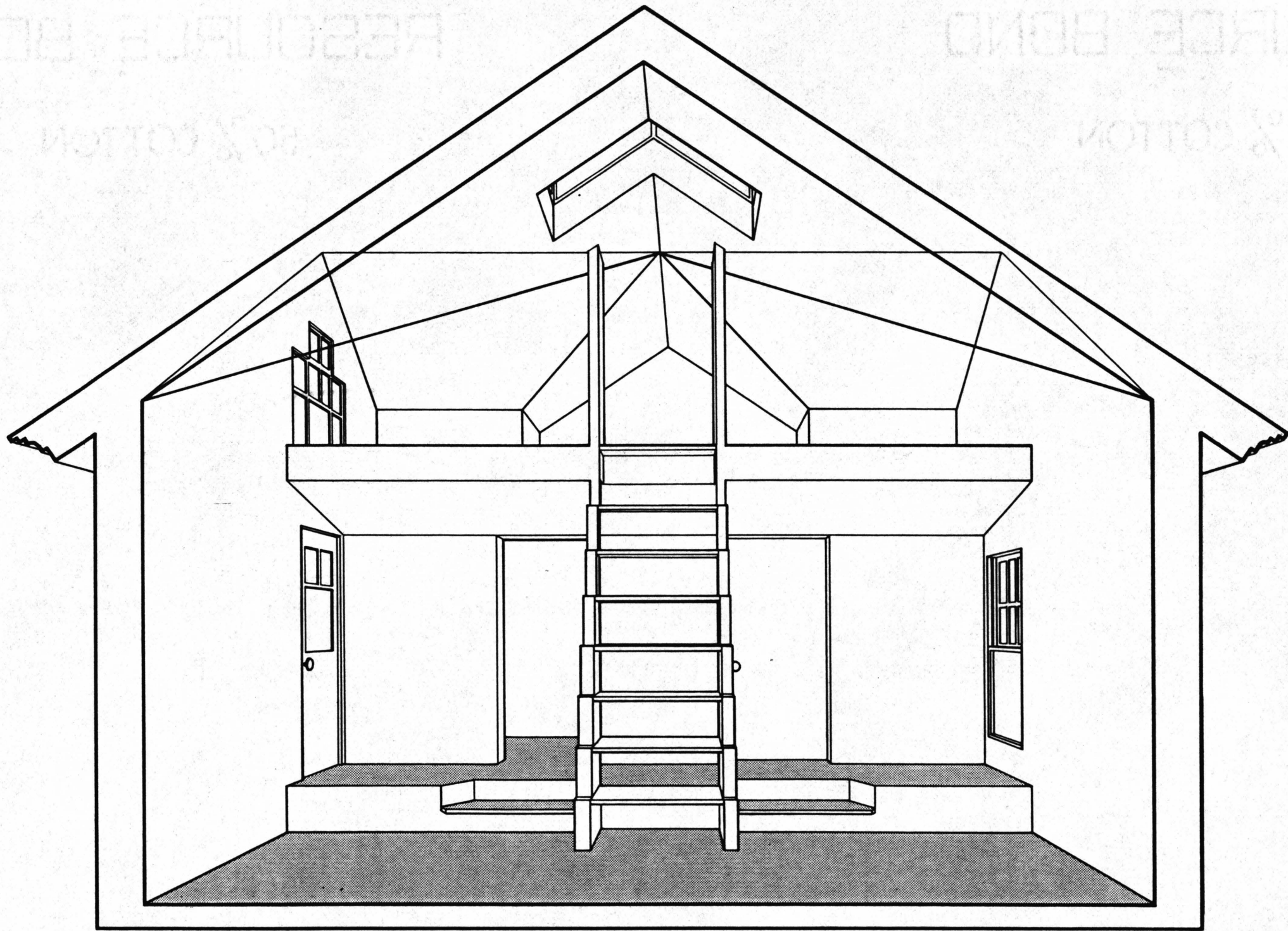


before

after

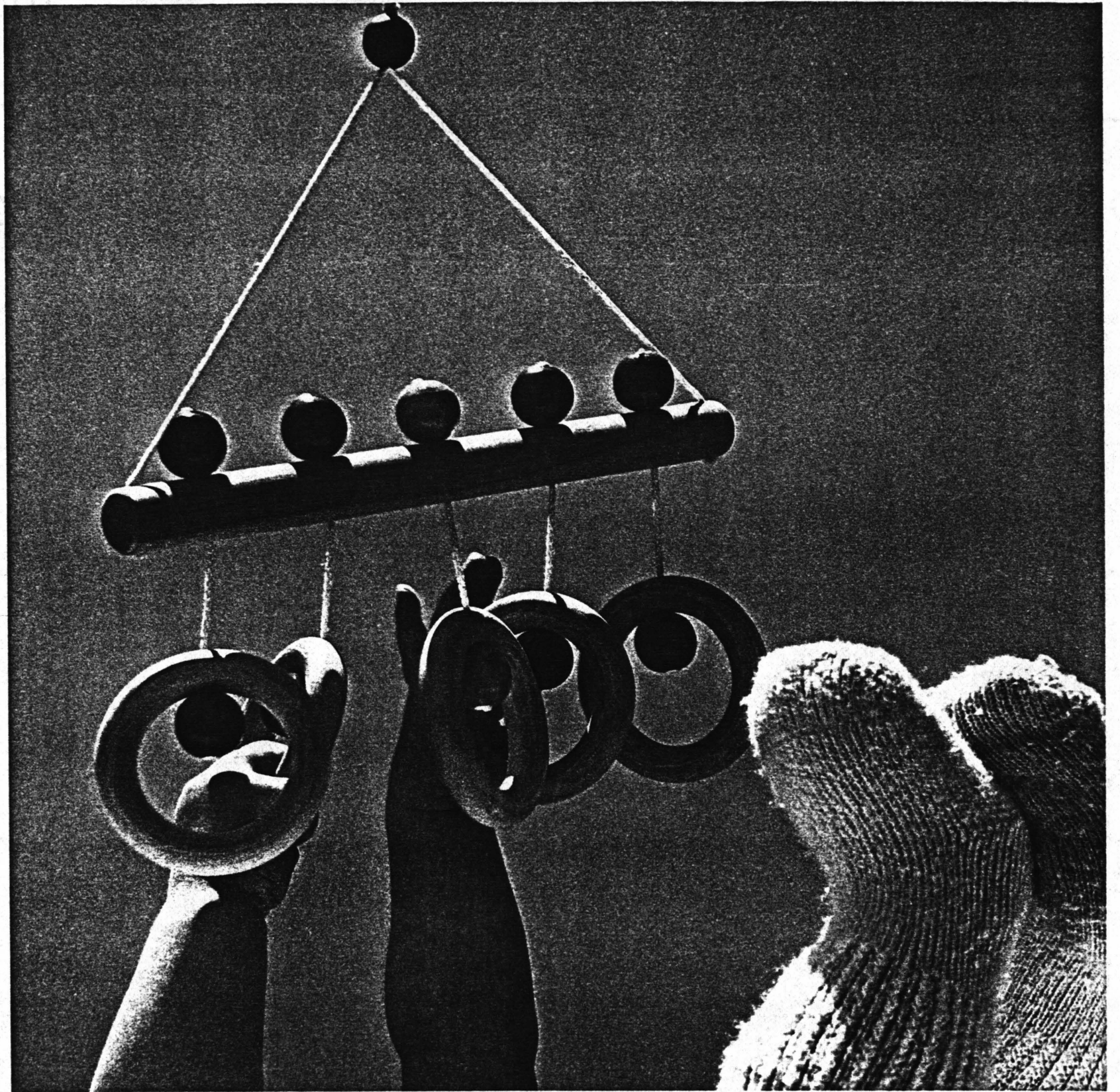






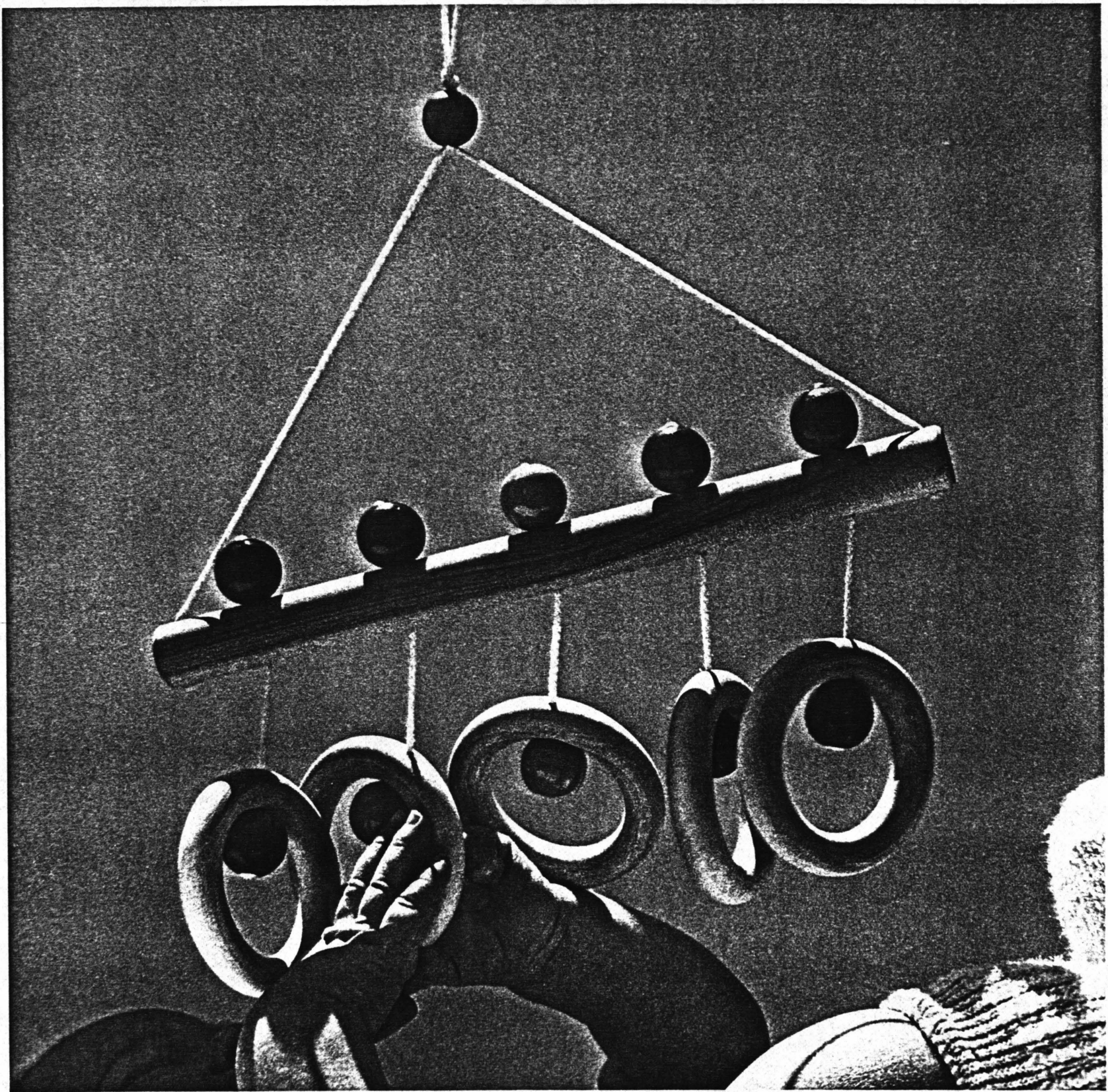
THESE WOODEN MOBILES ALLOW A VERY YOUNG CHILD TO EXPERIENCE  
THE JOYS OF COLOR AND SOUND, AS WELL AS DEVELOP THEIR EYE-  
HAND COORDINATION. A RING TO GRAB, A BALL TO SPIN; WITH  
EACH TOUCH, THE MOBILE RESPONDS WITH AUDIBLE AND VISUAL PLAY.

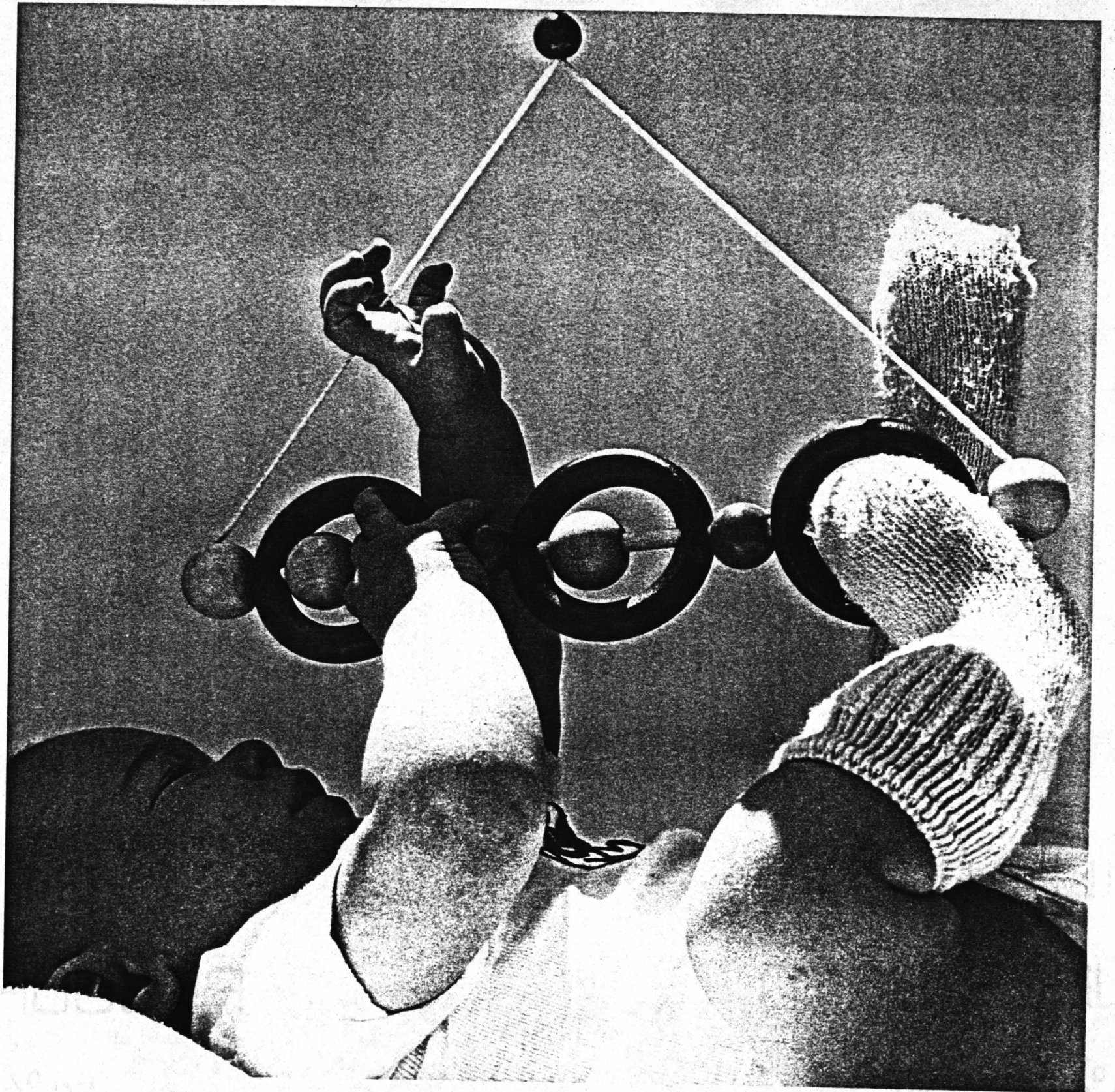
FOR SEAN

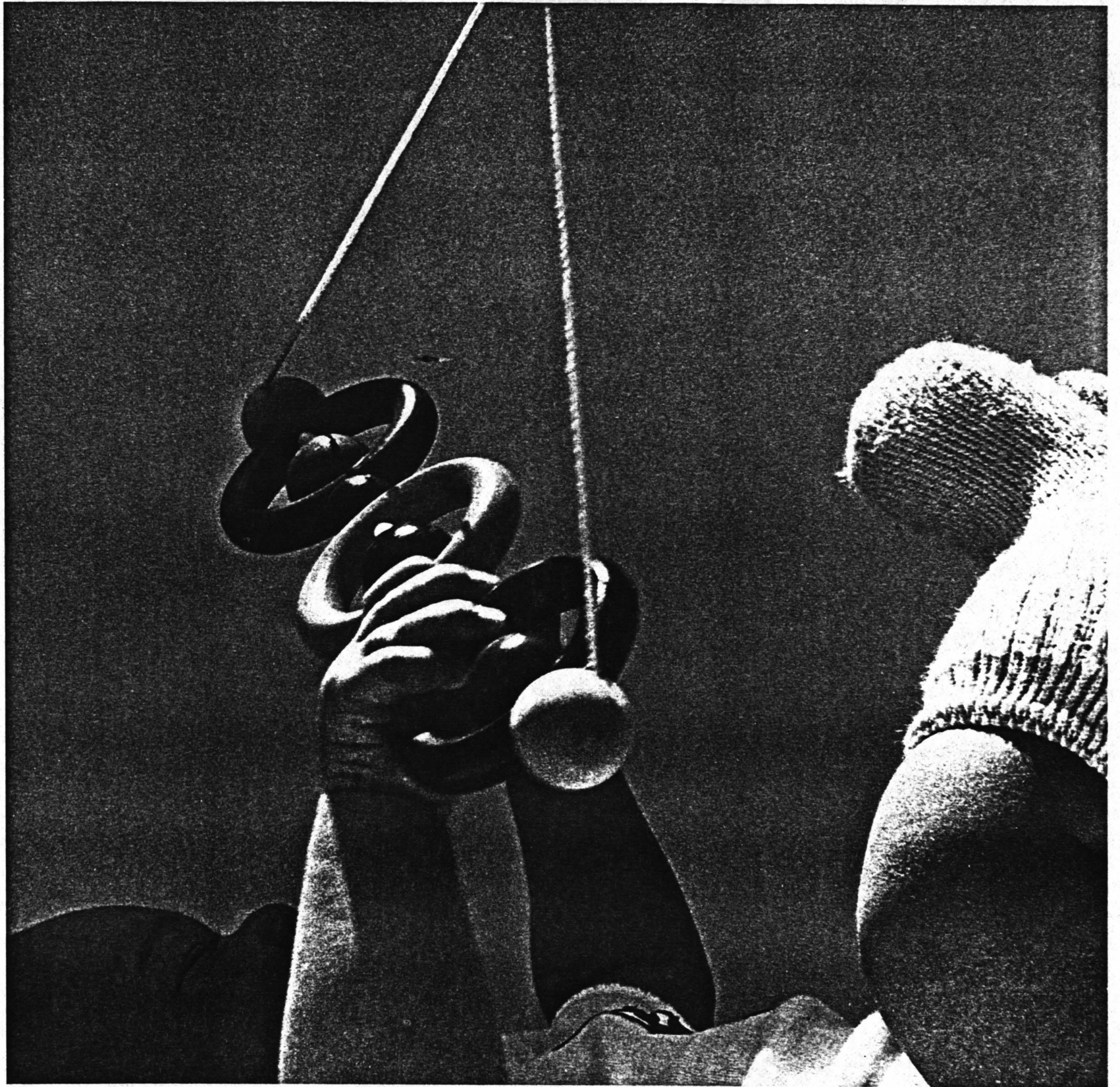


20% COTTON

20% COTTON





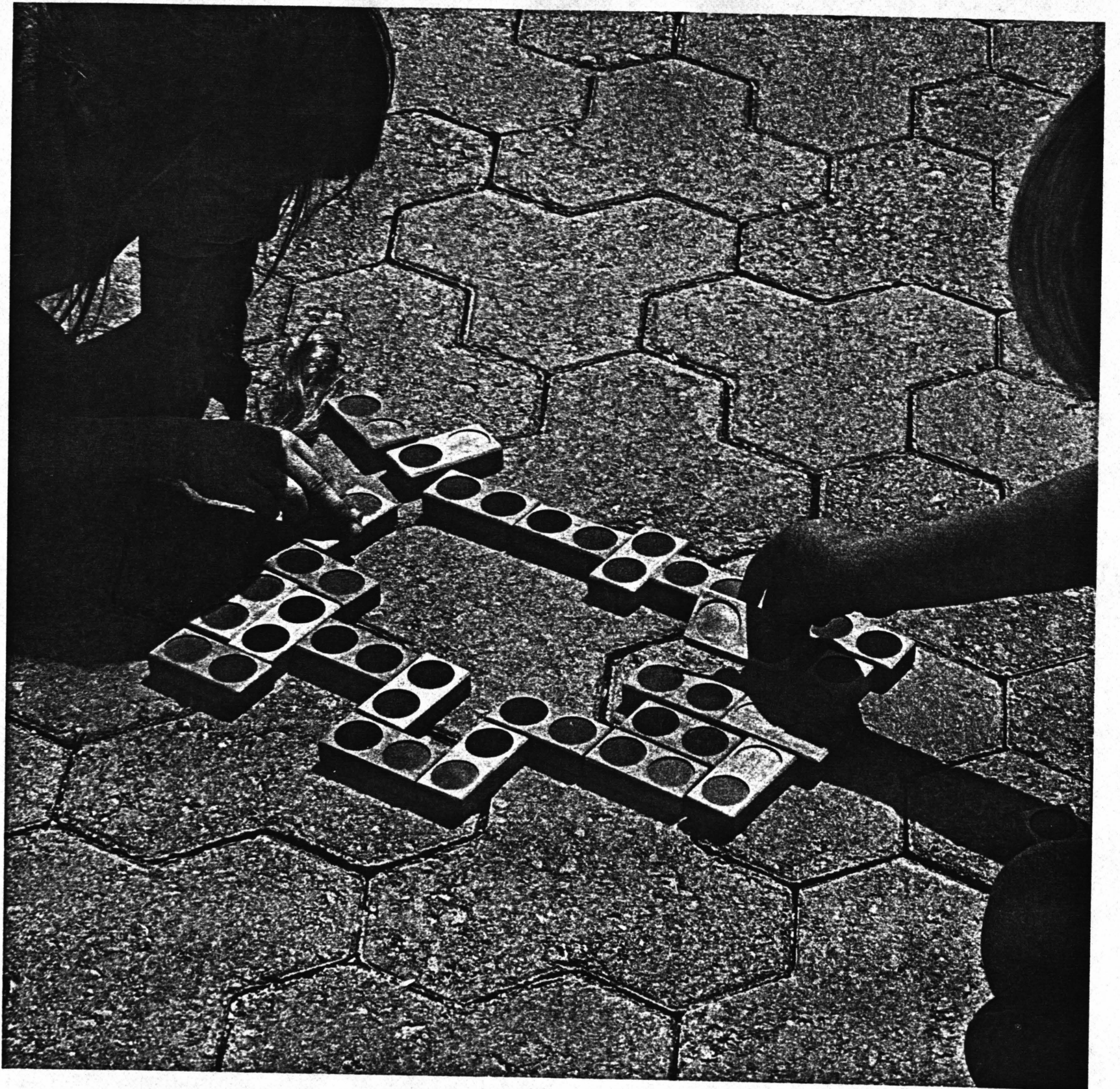


THIS TOY FOR OLDER CHILDREN IS A SIMPLIFIED VERSION OF THE FAMILIAR GAME OF DOMINOES. MATCHING OR ASSEMBLING BRIGHTLY COLORED WOODEN BLOCKS, CHILDREN CAN CREATE UNIQUE GRAPHIC PATTERNS WITH EACH GAME THEY PLAY. THIS TOY ENCOURAGES A CHILD TO BE CREATIVE WHILE IT HELPS TO DEVELOP HIS OR HER VISUAL AND MANUAL DEXTERITY.

FOR MEGHAN AND ELI

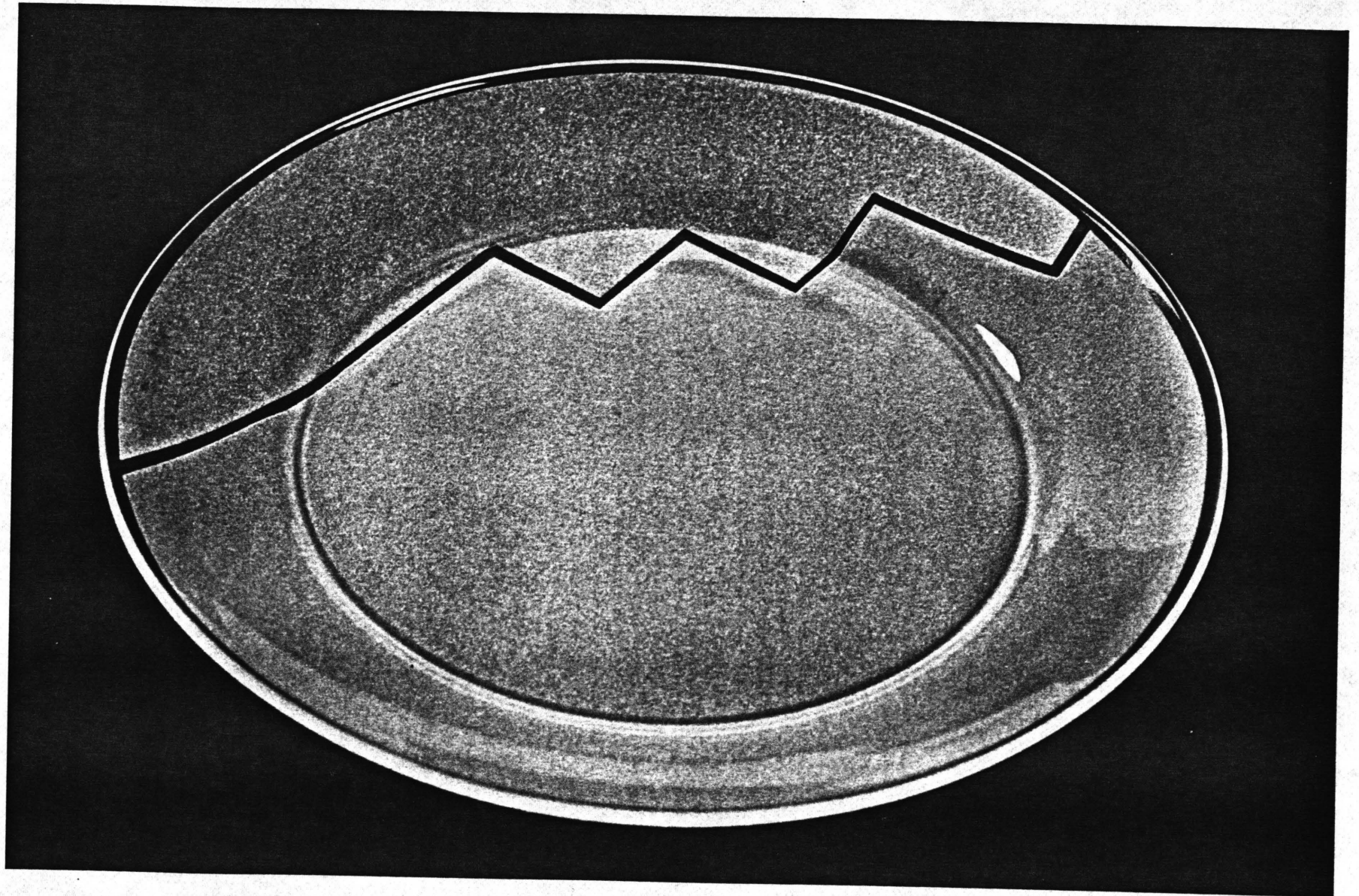






APPLIED BY USING A SANDBLASTER, THE PATTERNS ON THESE GLASS PLATES  
ALLOW THE USER TO VISUALLY EXPERIENCE THE TWO SURFACES AND THICK-  
NESS OF THE MATERIAL AT ONE TIME.

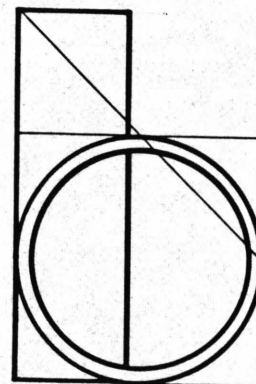
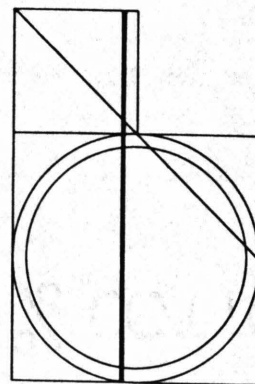
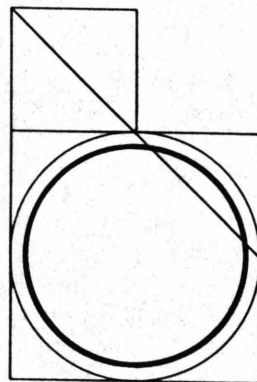
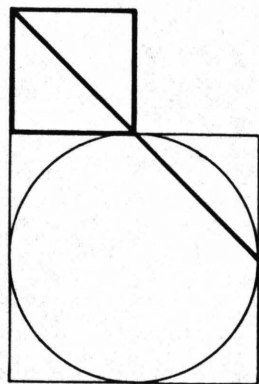
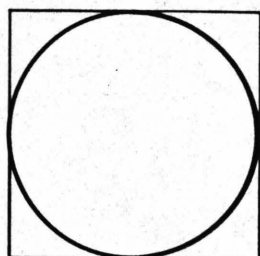
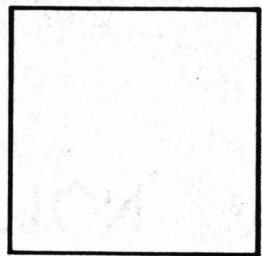
FOR MARY

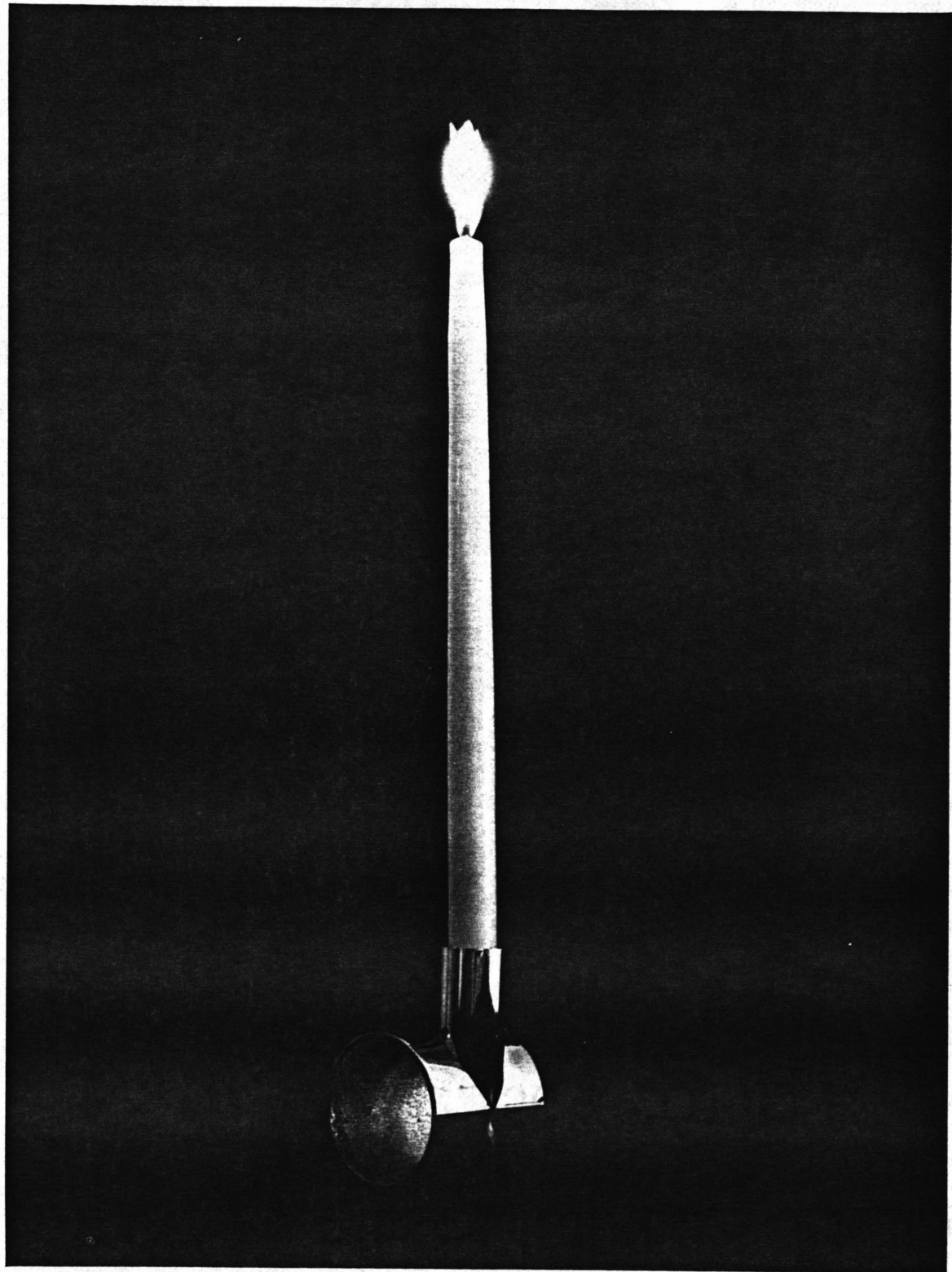




THE TANGENTIAL INTERSECTION OF TWO CYLINDERS, ONE FUNCTIONING AS  
SUPPORT, THE OTHER AS WEIGHT, FORM THESE CANDLESTICK HOLDERS.

FOR MANUEL AND NELLIE

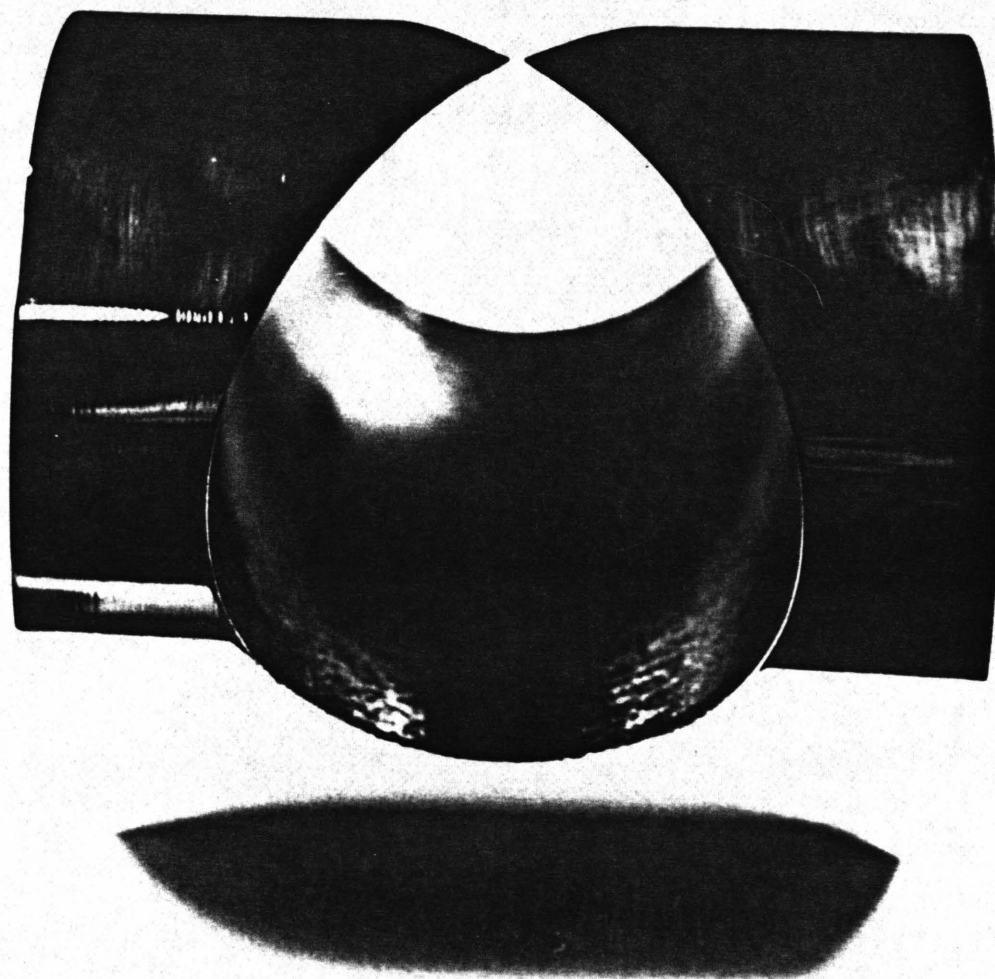






THE SINGULAR ACT OF TANGENTIALLY MILLING A THREE AND ONE HALF  
INCH 'CYLINDER' INTO A SIX INCH CYLINDER RESULTS IN A BEAUTIFUL  
LINE AND A 'POINT' IN SPACE.

FOR BUDDY

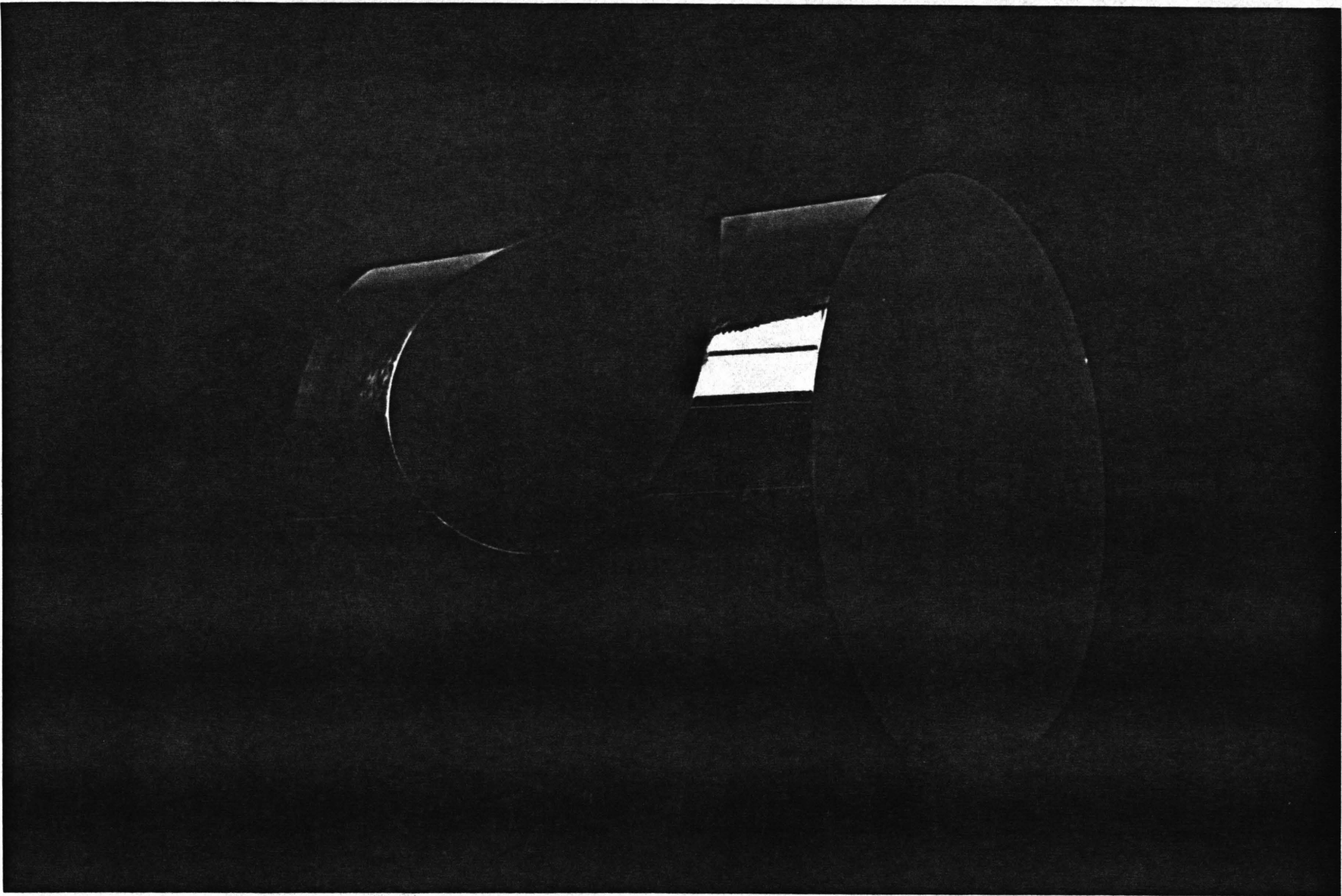


РО. X КОЛОН

ОПБЕ. БОИД

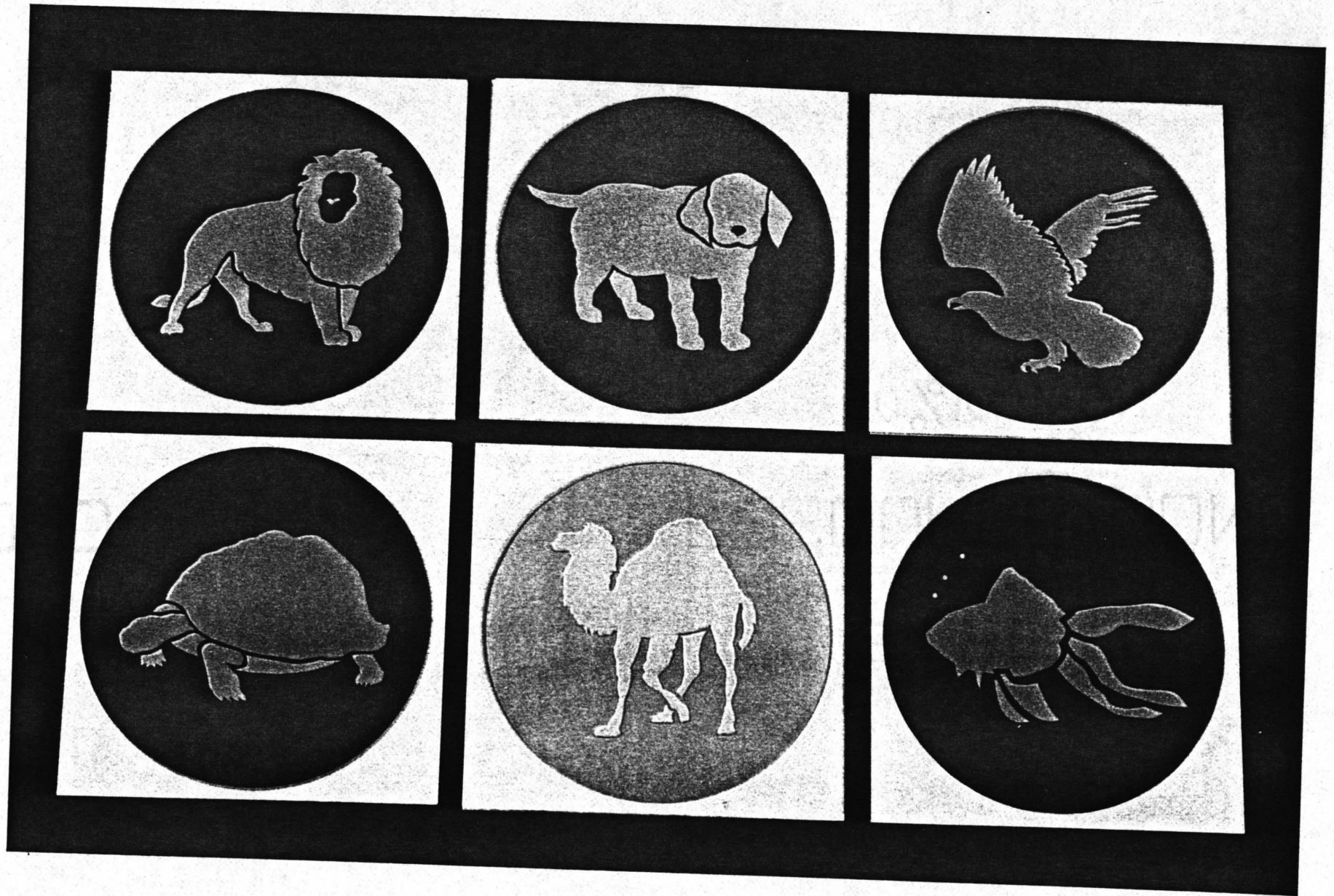
РО. X КОЛОН

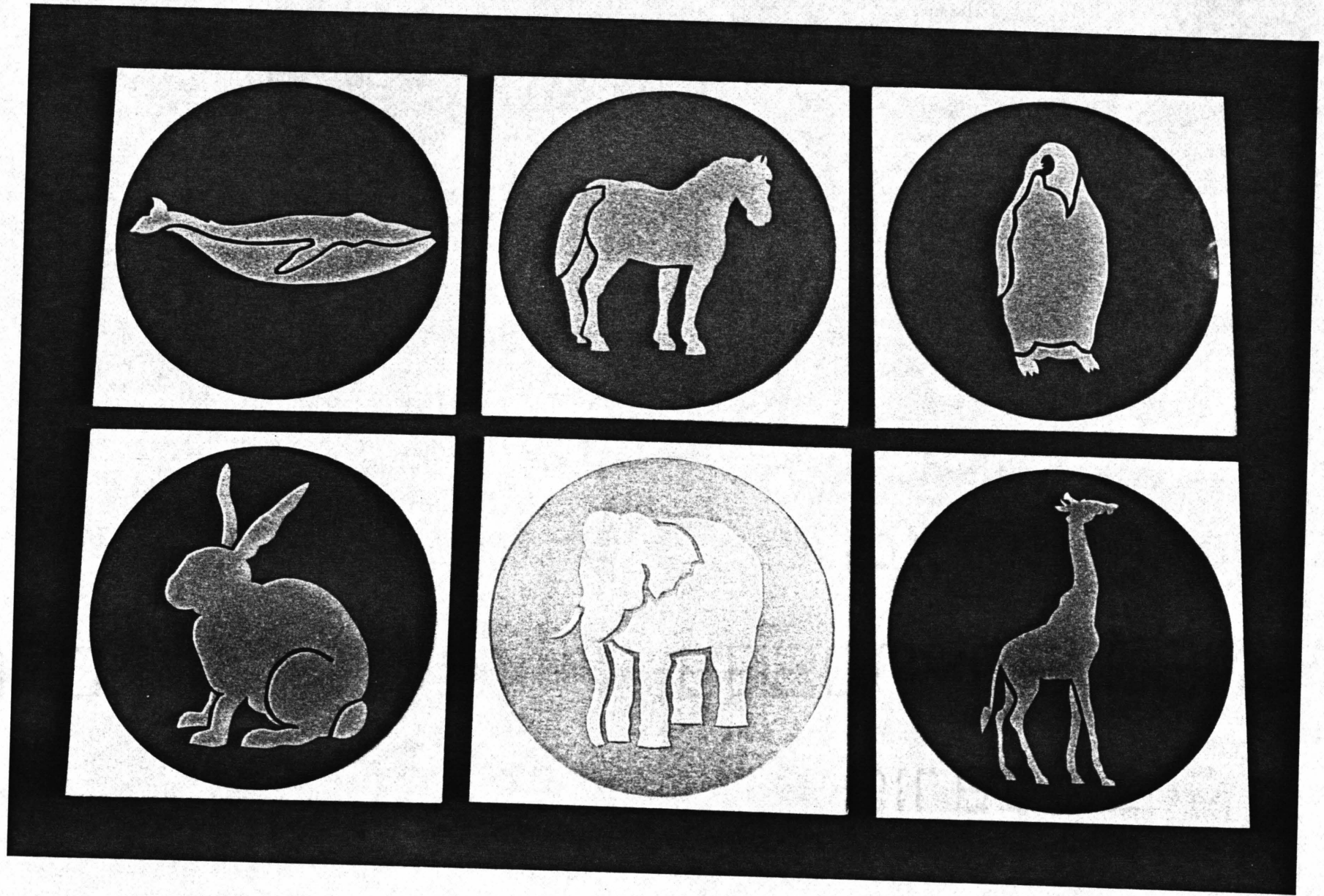
БЕРОПЧЕ БОИД



SANDBLASTED ONTO THE WINDOW OF A CLASSROOM DOOR, THESE GRAPHICS  
REPLACE THE STERILE 'ROOM NUMBER' OF THE TYPICAL ELEMENTARY  
SCHOOL WITH A FAMILIAR ANIMAL.

FOR DAYS PRING





**The vita has been removed from  
the scanned document**