

VIRGINIA

LEE
County Agricultural Agent Annual Report 1959

Index		Page
X 1 d 3.3	Marketing strawberries	9,14
1 d 3.59	Wool pool.	2, 7
2 e 4	Electric lines	11
X 4 j 1.1	Sheep;purebred	8,18
X 4 j 5	Sheep introduction	8,17
6 e 5.14	Tennessee Valley Authority . . .	1,6
X 8 f 2	Better seed.	9,15

AM 7

REPORT FILES
EXTENSION WORK

NARRATIVE REPORT FOR 1939
AGRICULTURAL EXTENSION DIVISION
LEE COUNTY, VIRGINIA

H. B. ELLER ---- COUNTY AGENT
F. M. HALSEY ---- ASST. AGENT

COUNTY AGENT ANNUAL REPORT

T A B L E O F C O N T E N T S

I. S U M M A R Y O F N A R R A T I V E

II. F I N A N C I A L S U M M A R Y

III. N A R R A T I V E R E P O R T

IV. P I C T U R E S U P P L E M E N T

SUMMARY OF NARRATIVE

I. PROGRAM PLANNING:

Program-planning meetings were held in four districts with four discussion group leaders taking part. A basis for coordinated county plan of work was laid.

II. AGRICULTURAL ADJUSTMENT PROGRAM:

Forty meetings were held in the county to explain A.A.A. A total of 1,388 farms were signed up in 1939. Eight hundred tons of lime and 516.3 tons of 48% Triple Super-phosphate were secured as grants of aid. An additional four thousand tons of lime and 602.5 tons of phosphate were used in earning soil-building payments. Fifty-four hundred acres of Lespedeza, five hundred acres of Red Clover, eighty acres of Alfalfa, one hundred fifty acres of winter legumes, and other grasses were seeded to earn benefit payments. Cash payments of around \$35,000 will be received by 1,100 farmers of Lee County.

III. COOPERATIVE T. V. A. PROGRAM:

Twenty-two of the old unit farms have remained active, and ten new unit farms have been added. Farm plans for each farm has been worked out by the agent and operator. Eight projects have been completed by the C.C.C.'s in cooperation with the T.V.A.-Extension Program. Unit farms, Special Area farms, and C.C.C. Projects have received 195.61 tons of phosphate during 1939.

IV. CATTLE:

Stocker calf sale planned for 1940 to be based on quality. Nine Purebred Registered Herford Bulls have been placed in the county. Approximately 4,600 calves vaccinated in the county by 360 owners.

V. SHEEP:

Eight thousand pounds of wool, eighty-eight per cent of wool in county, was sold cooperatively at \$29.25 to the farmer. Eight hundred twenty-two sheep were sold cooperatively by grade at prices three-quarter of a cent a pound higher than could have been obtained otherwise. Sheep production on an upgrade in Lee County. Eight purebred rams were placed in same number of flocks. One stud ram placed in purebred flock; high-quality rams for county will result.

VI. HORSES:

Sixty horses and mules treated for Bots in two communities.

VII. HOGS:

Several Purebred boars placed with high-grade gilts. Three hundred hogs have been vaccinated for Cholera. Feeding of Mineral and Protein supplements encouraged.

VIII. 4-H CLUB:

Four clubs of fifty-five members organized. A profit of \$583.70 was shown by 4-H Club members on their projects. Livestock judging team placed third at State Fair. Majority of meetings have been result meetings.

IX. AGRONOMY:

Use of certified seed stressed. Boone County White Seed Corn, Red Clover Seed, and Rootrot Resistant No. 16 Tobacco Seed to be certified in county for 1940. High-quality Barley seed was secured and treated for Smut for eighteen farmers.

X. HORTICULTURE:

Thirty-one hundred crates of strawberries sold cooperatively for thirty-two growers brought in approximately \$4,800. Introduction of vegetables and small fruits as cash crop planned.

XI. POULTRY:

Several flocks culled, few caponized, information on diseases distributed to several producers.

FINANCIAL SUMMARY

The financial returns of the Extension Program to the farmers of Lee County are as follows:

Agricultural Adjustment Program:	
Grants of Aid:	
Triple Superphosphate	27,880.00
Ground Limestone	<u>1,350.00</u>
	29,230.00
Cash	<u>36,000.00</u>
TOTAL	65,230.00
Value of T. V. A. Phosphate	12,340.61
Saving to Beef Cattle Producers	5,800.00
Saving to Sheep Growers:	
Wool Pool	360.00
Lambs	<u>500.00</u>
TOTAL	860.00
Saving to Strawberry Growers	1,550.00
Profit made by 4-H Club Members	<u>583.70</u>
TOTAL SAVING TO FARMERS OF LEE COUNTY FOR 1939	<u>\$86,364.31</u>

4

NAARRATIVE REPORT FOR 1939

AGRICULTURAL EXTENSION DIVISION

LEE COUNTY, VIRGINIA

H. B. ELLER ---- COUNTY AGENT

F. M. HALSEY ---- ASST. AGENT

MAJOR PROJECTS:

I. PROGRAM PLANNING:

A series of program-planning meetings were held in four districts with four discussion group leaders taking part. These meetings were attended by approximately sixty people. The average attendance was very low, however. The object of these meetings was to have the farmers in their respective communities come together to discuss some of their present problems and to work together in formulating a long-time plan of work for their communities and to have these plans coordinated into a county plan of work.

II. AGRICULTURAL ADJUSTMENT PROGRAM:

Under this program during 1939 we had 1,388 farms signed up. Of this number approximately 1,100 farmers will receive \$35,000 in benefit payments, plus 800 tons of ground limestone and 516.3 tons of 48% triple superphosphate which were taken in lieu of part of their payments.

In addition to the above, there was approximately 4,000 tons of ground limestone spread and 602.5 tons of 16 and 20 per cent phosphate used toward carrying out the soil-building practices required through the program.

In addition to the above practices carried out, approximately fifty-four hundred acres of Lespedeza, five hundred acres of Red Clover, eighty acres of Alfalfa, and one hundred fifty acres of winter legumes have been seeded in the county in connection with the A.A.A.

In connection with the A.A.A. Program approximately forty meetings have been hold throughout the several communities in the county for the purpose of explaining the details of this program and in urging greater participation among the farmers. It is believed that through these series of meetings this year more small farmers were contacted to whom the program was explained, thereby making it possible for them to receive, as a grant of aid, phosphate or lime which has been lost to them in previous years.

5

A referendum has been conducted for Burley tobacco for 1940, which called for a series of educational meetings for the explanation of details relative to same, by me and the County Committee which administers this program.

I have done everything possible to keep the cost of carrying out the program to a minimum, and I feel that with the amount of work turned out that the cost in this county compares more than favorably with the cost of similar sized counties throughout Southwest Virginia.

III. COOPERATIVE T. V. A. PROGRAM:

During the past year twenty-two of the old unit farms have remained active. They have received phosphate, kept their farm records, and operated their farms according to good farm management plans. The size of these farms range from 40 acres to 651 acres. The farmers operating these farms have been assisted by the County Agents in purchasing and selling farm products, in establishing new businesses on the farms, and in the general operation of their farms.

During 1939 ten new unit farms were selected. Their respective operators joined the county organization and received phosphate through the T.V.A.-Extension Program. Farm practices and farm plans were discussed with each farmer regarding his farm. Each farm was thoroughly gone over by the farmer and the County Agents to work out a plan of operation.

The T.V.A.-Extension organization cooperated with the C.C.C.'s in working scalds and gulches in the county. Eight projects were completed jointly, and ten other projects will be completed in the near future.

In carrying on the T.V.A. program this year 102.66 tons of 48% phosphate and 92.95 tons of 65% phosphate, valued at \$12,340.61, was applied to the twenty-two old unit farms containing a total of 5,150.5 acres, to the ten new unit farms containing a total of 1,215.3 acres, to the twenty-two special area farms containing a total of 3,326.4 acres, and to the eight C.C.C. erosion projects containing approximately fifteen hundred acres.

IV. CATTLE:

A county-wide meeting was held in the spring for all cattle producers in the county. At which time, Professor R. E. Hunt, Head of Animal Husbandman Department, discussed the value of fertilization of pasture and the result of an experiment of beef cattle carried on and finished on grass as compared with cattle finished on grain.

Also, at this time a discussion was held as to the value of establishing a feeder and stocker calf sale to be held in the fall. However, very little interest was shown in this type of sale. The plans at present are, however, as a result of two other meetings with calf producers, to spend considerable time in working up a stocker calf sale for 1940, to be based on quality.

It is felt that considerable service can be rendered the calf producers in the county by assisting them to pool their groups of calves and selling them at auction at some central point in the county. At which time a greater number of buyers could be secured; and by having it on a quality basis, I feel that a better price could be secured for the producers.

Considerable time has been spent in assisting farmers in locating heifers, cows, and calves for cow herds throughout the county. The number has increased in the last two or three years considerably. Since this is one point of the program laid out by the Agricultural Advisory Board, I have stressed it throughout the county and have assisted and encouraged, wherever possible, this type of livestock production. Nine Purebred Registered Herford Bulls have been placed in the county this year.

Approximately 4,600 calves in the county were vaccinated by 360 owners for prevention of Blackleg. I personally have vaccinated about 700 calves for prevention of Blackleg and about 250 calves for Hemorrhagic Septicemia. Visits have been made to see cattle that were sick, a type of work that takes considerable time yet accomplishes very little.

V. SHEEP:

Approximately eighty-eight per cent of the wool in the county was sold through the County Wool Pool at \$29.25 net to the farmer. Eight thousand pounds were sold in this manner.

Eight hundred twenty-two lambs and old sheep were sold cooperatively by grade at prices three-quarter of a cent per pound more than could have been obtained locally. This includes approximately ninety per cent of the lambs produced in the county.

Due to this shipping and selling by grade, it is believed that the quality of the lambs has been increased materially in the past two years. I also consider that this is a service rendered the small sheep producer that is very worthwhile, since he receives as much per head for his five lambs through this method as does the man who has fifty lambs. By having this system of marketing it encourages the small farmer to keep a few sheep, a program which will pay him well and bring in cash during the early spring and summer when there is no other source of money.

-2-

The County Advisory Board has also recommended that an effort be made to increase the number of flocks in the county, and I have spent several days in assisting farmers locate stecker ewes and in talking up this project. It is felt that the number of sheep in Lee County could be increased to about three times the present population, which would result in an increased income for the farmers and provide a means of marketing more efficiently the grass on the steep slopes of the county.

Eight purebred rams have been placed in the same number of flocks. Assistance was rendered our two Hampshire breeders in selling the rams which they had on hand this year in this and adjoining counties. I also assisted one purebred breeder in locating and selecting a stud ram to head his purebred flock. This should result in a production of rams of high quality to eventually head the grade flocks in our county.

VI. HORSES:

It was planned to have several horses and mules in several communities of the county treated for Bots early in the spring. This project was carried out in two communities where sixty horses and mules were treated. The concentration of horses and mules at a central point was arranged by me, and Veterinarians were secured to treat these animals.

VII. HOGS:

About three hundred hogs located in the various communities of the county have been vaccinated for Cholera. The number of hogs that have gone down in their backs have been treated for this trouble with considerable success. In connection with this treatment, information has been given out as to the value of feeding mineral and protein supplements to the fattening hogs.

Wherever possible, a purebred boar and high-grade gilts have been placed with interested parties.

VIII. 4-H CLUB:

Four clubs of fifty-five members have been organized in the county. A Livestock Judging Team was trained and entered in the State Judging Contest held in connection with the State Fair, and this team placed third in the contest.

One motion picture was held for two of the clubs early in the spring.

A majority of the club meetings have been on Demonstration Farms in the county, at which time crop rotations, types of soil, and breeds of animals were discussed with the members.

8

-7-

A group of approximately fifteen girls and eight boys were taken to the 4-H Short Course held at Blacksburg, Virginia, for a period of one week during the summer.

The club members have made a total profit of \$583.70 this year.

It is felt that more intensive work should be carried out with the boys and girls throughout the county in this type of work, and I plan to do so if it is at all possible to work it into the program during 1940.

IX. AGRONOMY:

The use of certified seeds was stressed this spring, especially the use of Certified Clover, Corn, and Tobacco Seed. As a result of this campaign for better seed, more than one hundred farmers planted Boone County White Certified Seed Corn, three farmers sowed Certified Red Clover Seed, and approximately thirty-five farmers planted Certified Rootrot Resistant Tobacco Seed. It is our plan to have all three certified this year, so as to have certified seed available for other farmers for 1940.

Of the three producers of Certified Rootrot Resistant No. 16 Tobacco Seed in Virginia, two of them are located in Lee County. This will provide an adequate supply of high-quality seed for Lee County farmers for the first time.

Approximately eight days have been spent in assisting farmers in working out farm-management systems for individual farms.

One meeting was held for fertilizer dealers, at which time the value of selling fertilizers of high analysis was discussed thoroughly, and also the recommendation of different analyses was discussed as to use for different crops.

Assistance was rendered eighteen farmers in securing high-quality Barley seed and the treating of this seed for smut.

Four Tobacco Grading Demonstrations were conducted in connection with a U. S. Grader. These meetings were well attended and proved to be of great interest and value to the farmers.

X. HORTICULTURE:

Assistance has been rendered the strawberry growers of this county for the past three years in marketing their berries. Thirty-one hundred crates of berries were sold this year, mostly on the Cincinnati market, which brought in approximately \$4,800. This service was rendered thirty-two growers.

Due to the fact that this volume of berries was placed on the Cincinnati market, it enabled the growers in the upper part of the county to place their berries on the local markets at a good price, since there was no flooding of the home markets.

9

Notices of proper time and kinds of spray have been mailed out to the apple and peach growers in the county.

Specialists have been in the county on two different occasions to assist several farmers in getting started and in producing several different vegetables and small fruits on a cash-crop basis. Assistance will be given these farmers in marketing these crops in 1940.

One meeting has been held for the purpose of getting the farmers interested in producing fall and winter gardens, so as to have an adequate supply of food and to reduce the grocery bills throughout the winter.

A monthly garden letter has been sent out to approximately one hundred farmers who have requested this information.

XI. POULTRY:

Several flocks have been caulked, information on diseases has been distributed to several poultry producers, and a few flocks have been caponized.

MINOR PROJECTS:

I. BUILDINGS:

Several plans for farm buildings, especially tobacco barns, poultry houses, and lime kilns have been distributed. Information as to the kinds of paint to be used in painting barns and other outbuildings has been secured for several farmers.

II. COUNTY FAIR:

Approximately one week's time was spent in assisting the Lee County Fair Association in working up exhibits for the 1939 Fair. There was more competition in the livestock and a larger number of exhibits at this fair than in any of the previous fairs held since the revival of the County Fair in Lee County.

III. FARM CREDIT:

Advice as to the proper place to secure proper credit for the different types of loans desired has been given to several farmers who have inquired at the office. Assistance has also been rendered the Emergency Crop Loan Office by taking crop loans for approximately seventy people.

10

IV. R. E. A.

As a result of a series of meetings held during 1938 for the promotion of rural electrification lines in Lee County, one hundred forty miles of line have been completed this year. Assistance was rendered the officers of this cooperative in putting on the energization ceremonies held at Jonesville, at which time approximately seven hundred rural people took part.

140 miles

I feel that this is the greatest improvement or advancement that Lee County has made in the past decade. It is planned to take to the rural people who are using this electricity the latest information as to the best and most economical use of electricity on the farm and in the home. A series of meetings for this purpose will be held during February, 1940.

V. STATISTICS:

In carrying out all of the above programs, both the Assistant Agent and I have traveled 16,400 miles, 694 farm visits have been made, twenty-four news articles have been published, 564 individual letters have been written, 115 circular letters have been sent out, 283 bulletins have been distributed, and 160 group meetings have been held.

IV. PICTURE SUPPLEMENT

12



Certified Rootrot Resistant Tobacco Seed
being produced for first time in Lee County

13

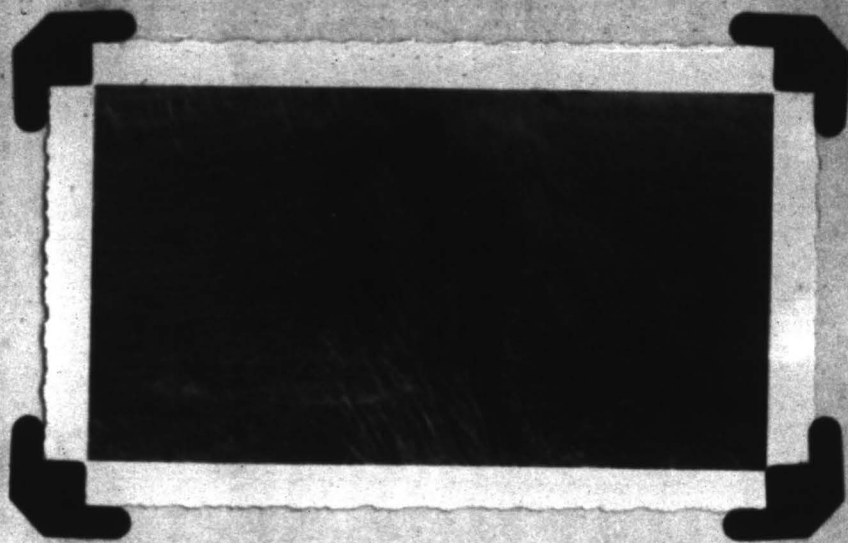
\$4,800 was received for 3,100 crates
of strawberries sold cooperatively



Strawberry acreage trebled during 1939 as a cash
crop due to cooperative selling of berries



Sample of berries shipped to Cincinnati



↑
Phosphated
and
Limed

↑
No
Phosphate



Check pens on phosphated and
unphosphated plots

15



4-H Club Boys studying types of soil
during a series of Field Meetings



E. F. Henry, Soil Surveyor,
explaining management of
different types of soil

Lee County needs more sheep



A campaign for more sheep in Lee County has resulted in an increase of several small flocks

One of several purebred rams
placed in the county



Yearling stud ram secured to head one
of the purebred flocks in the county

18

COOPERATIVE EXTENSION WORK IN AGRICULTURE AND HOME ECONOMICS

U.S. Department of Agriculture
and State Agricultural Colleges
Cooperating

Extension Service
Washington, D. C.

COMBINED ANNUAL REPORT OF COUNTY EXTENSION WORKERS

This report form is for use by county extension agents in making a combined statistical report on all extension work done in the county during the year. Agents resigning during the year should make out this report before quitting the service.

State Virginia County Lee

REPORT OF

W. E. Lake
(Name) Home Demonstration Agent.

From Dec. 1, 1938 to Nov. 30, 1939

Assistant Home Demonstration Agent.

From _____ to _____, 193

4-H Club Agent.

From _____ to _____, 193

Assistant County Agent in charge of Club Work.

From _____ to _____, 193

E. E. Miller
Agricultural Agent.

From Dec. 1, 1938 to Nov. 30, 1939

F. M. Halsey
Assistant Agricultural Agent.

From Dec. 1, 1938 to Nov. 30, 1939



READ SUGGESTIONS, PAGES 2 AND 3

Approved:

Date _____ State Extension Director.

SUGGESTIONS RELATIVE TO THE PREPARATION OF THE COUNTY EXTENSION AGENT'S ANNUAL REPORT

The annual report should be a summary, with analysis and interpretations, for presentation to the people of the county, the State, and the Nation of the extension activities in each county for the year, and the results obtained by the county extension agents assisted by the subject-matter specialists. The making of such a report is of great value to the county extension agents and the people of the county in showing the progress made during the year as a basis for future plans. It is of vital concern also to the State and Nation as a measure of rural progress and a basis for intelligent legislation and financial support of extension work.

At least four copies of the annual report should be made: One copy for the county officials, one copy for the agent's files, one copy for the State extension office, and one copy for the Extension Service, United States Department of Agriculture. *The report to the Washington office should be sent through the State extension office.*

STATISTICAL SUMMARY

Where two or more agents are employed in a county they should submit a single statistical report showing the combined activities and accomplishments of all county extension agents employed in the county during the year. Results obtained through assistance rendered agents by specialists should also be included. This report shows, insofar as possible, the part each agent has taken in forwarding the extension program. The county totals should be the sum of the activities and accomplishments of individual agents minus duplications due to two or more agents participating in the same activity or accomplishment. The county totals, when properly recorded, show the progress made in the county during the year in forwarding the entire extension program. Negro men and women agents should prepare a combined statistical report separate from that of the white agents.

The statistical summary should be a report of this year's activities and results that can be verified by records on file in the county office. Where records are not available careful estimates are desired. Such estimates should be marked "Est."

NARRATIVE SUMMARY

A separate narrative report is desired from the leader of each line of work, such as county agricultural agent, home demonstration agent, boys' and girls' club agent, and Negro agent. Where an assistant agent has been employed during a part or all of the year, the report of his or her work should be included with the report of the leader of that line of work. Where an agent in charge of a line of work has quit the service during the year, the information contained in his or her report should be incorporated in the annual report of the agent on duty at the close of the report year, and the latter report so marked.

The narrative report should summarize and interpret, under appropriate subheadings, the outstanding results accomplished and the extension methods used for each project. Every statement should be clear-cut, concise, forceful, and, where possible, reinforced with necessary data from the statistical summary. Use a descriptive style of writing, giving major accomplishments first under each project. Give extension methods fully relating to outstanding results only, and where practicable illustrate with photographs, maps, diagrams, blueprints, or copies of charts and other forms used. Full credit should be given to all cooperating agencies. The lines should be single-spaced, with double space between the paragraphs and reasonably good margins. The pages should be single-numbered, with double space between the paragraphs.

The following outline is merely suggestive of how the narrative report may be clearly and systematically presented. Each agent should prepare an outline to fit the situation and the work to be reported.

SUGGESTIVE OUTLINE OF ANNUAL NARRATIVE REPORT

- I. Cover and title page.
- II. Table of contents.
- III. Summary of activities and accomplishments, preferably of one or two typewritten pages only, placed at the beginning of the narrative report.
- IV. Changes in county extension organization.
 - (1) Form.
 - (2) General policies.
 - (3) Procedure.
- V. County program of work.
 - (1) Factors considered and results.
 - (2) Project activities and results.

Under appropriate headings and subheadings present in some detail for each major project or line of work the goals set up, the methods used, the results achieved, and the significance of those results in terms of improved farms and homes and of better community life.
- VI. Outlook and recommendations, including suggestive program of work for next year.

TERMINOLOGY

To insure reports which convey the intended meaning to others and to facilitate the compilation of satisfactory national statistics on extension, it is extremely important that terms be used in accordance with accepted definitions. The following definitions of extension terms have been approved by the United States Department of Agriculture and the Association of Land Grant Colleges and Universities. Agents should read these definitions before starting to write the annual reports.

DEFINITIONS OF EXTENSION TERMS

1. A program of work is a statement of the specific projects to be undertaken by the extension agents during a year or a period of years.
2. A plan of work is a definite outline of procedure for carrying out the different phases of the program of work. Such a plan provides specifically for the means to be used and the methods of using them. It also shows what, how, when, and where the work is to be done.
3. A community is a more or less well-defined group of rural people with common interests and problems. Such a group may include those within a township, trade area, or similar limits. For the purpose of this report a community is one of the several units into which a county is divided for conducting organized extension work.
4. A project leader, local leader, or committeeman is a person who, because of special interest and fitness, is selected to serve as a leader in advancing some phase of the local extension program. A project leader may be either an organization or a subject-master leader.
5. Demonstrations as contemplated in this report are of two kinds—method demonstrations and result demonstrations. A method demonstration is a demonstration given by an extension worker or other trained leader for the purpose of showing how to carry out a practice. Example: Demonstrations of how to can fruits and vegetables, mix spray materials, and cull poultry.
A result demonstration is a demonstration conducted by a farmer, home maker, boy, or girl under the direct supervision of the extension worker, to show locally the value of a recommended practice. Such a demonstration involves a substantial period of time and records of results and comparisons, and is designed to teach others in addition to the person conducting the demonstration. Example: Demonstrating that the application of fertilizer to cotton will result in more profitable yields, that underweight of certain children can be corrected through proper diet, that the use of certified seed in growing potatoes is a good investment, or that a large farm business results in a more efficient use of labor.
The adoption of a farm or home practice resulting from a demonstration or other teaching activity employed by the extension worker as a means of teaching is not in itself a demonstration.
6. A result demonstrator is an adult, a boy, or a girl who conducts a result demonstration as defined above.
7. A cooperator is a farmer or home maker who agrees to adopt certain recommended practices upon the solicitation of an extension worker. The work is not directly supervised by the extension agent and records are not required, but reports on the success of the practices may be obtained.
8. A 4-H Club is an organized group of boys and/or girls with the objectives of demonstrating improved practices in agriculture or home economics, and of providing desirable training for the members.
9. 4-H Club members enrolled are those boys and girls who actually start the work outlined for the year.
10. 4-H Club members completing are those boys and girls who satisfactorily finish the work outlined for the year.
11. A demonstration meeting is a meeting held to give a method demonstration or to start, improve, or further a result demonstration.
12. A leader-training meeting is a meeting at which project leaders, local leaders, or committeemen are trained to carry on extension activities in their respective communities.
13. An office call is a call in person by an individual or a group seeking agricultural or home-economics information, as a result of which some definite assistance or information is given. A telephone call differs from an office call in that the assistance or information is given or received by means of the telephone. Telephone calls may be either incoming or outgoing.
14. A farm or home visit is a call by the agent at a farm or home at which some definite information relating to extension work is given or obtained.
15. Days in office should include those spent by the county extension agent in the office, at annual and other extension conferences, and on any other work directly related to office administration.
16. Days in field should include all days spent on official duty other than "days in office."
17. Letters written should include all original letters on official business. (Duplicated letters should not be included.)
18. An extension school is a school usually of 2 to 6 days' duration, arranged by the Extension Service, where practical instruction is given to persons not resident at the college. An extension short course differs from an extension school in that it is usually held at the college or another educational institution and usually for a longer period of time.
19. Records consist of definite information on file in the county office that will enable the agent to verify the data on extension work included in this report.
20. The county extension association or committee is that county organization, whether a membership or a delegate body, which is recognized officially in the conduct of extension work in the county.

GENERAL ACTIVITIES

Report Only This Year's Extension Activities and Results That Can Be Verified.

1. List below the names, titles, and periods of service of the county extension agents whose work is included in this report. Include time of assistants with that of regular agent.

AGENT	Total months of service this year (a)	Days devoted to agr'l conservation and adjustment programs (b)	Days devoted to relief work (c)	Total days in office (d)	Total days in field (e)
<u>Ruth L. Lark</u> (Name) Home demonstration agent	12			53	239
Asst. home demonstration agent					
4-H Club agent Assistant county agent in charge of club work	24	89½	0	180½	372½
Agricultural agent					
Assistant agricultural agent					

2. County extension association or committee:
- (a) Agricultural extension:
 - (1) Name W. Leggett, Ad. Secy, Board
 - (2) Number of members 11
 - (b) Home demonstration:
 - (1) Name W. Leggett, Ad. Secy, Board
 - (2) Number of members 48
 - (c) 4-H Club:
 - (1) Name _____
 - (2) Number of members _____
3. Number of communities in county where extension work should be conducted. 20
4. Number of above communities in which the extension program has been planned cooperatively by extension agents and local committees. 13
5. Number of different voluntary county or community project leaders or committeemen actively engaged in forwarding the extension program:
- (a) Adult work:
 - (1) Men 40
 - (2) Women 65
 - (b) 4-H Club work:
 - (1) Men _____
 - (2) Women 6
 - (3) Older club boys _____
 - (4) Older club girls 1
6. Number of different paid local leaders engaged in agricultural-conservation and adjustment programs:
 - (a) Men 27
 - (b) Women _____
7. Number of clubs or other groups organized to carry on adult home demonstration work. 12
8. Number of members in such clubs or groups. 331

ITEM	Home demonstration agents (a)	4-H Club agents (b)	Agricultural agents (c)	County total (d)
9. Number of 4-H Clubs	10		4	14
10. Number of different 4-H Club members enrolled	(1) Boys: _____		5	5
	(2) Girls: <u>240</u>			240
11. Number of different 4-H Club members completing	(1) Boys: _____		15	15
	(2) Girls: <u>119</u>			119

12. Number of different members enrolled in 4-H Club work for:

MEMBERS	1st year	2d year	3d year	4th year	5th year	6th year and over
(a) Boys	48	0	7			
(b) Girls	84	83	40	19	14	0

¹ County total should equal sum of preceding three columns minus duplications due to two or more agents participating in the same activity or accomplishment.

² Report the total number of different boys or girls enrolled in club work. This total should equal the sum of the project enrollments reported on pages 7 to 20, minus duplications due to the same boy or girl carrying on two or more subject-matter lines of work. Do not include boys and girls enrolled late in the year in connection with the succeeding year's program.

³ Same as footnote 2 but refers to completions instead of enrollments.

⁴ The total for this question should agree with county total, question 10.

GENERAL ACTIVITIES—Continued

Report Only This Year's Extension Activities and Results That Can Be Verified

ITEM	Age	10 and under	11	12	13	14	15	16	17	18	19	20 and over	
13. Number of different 4-H Club members enrolled according to age ¹	(a) Boys		7	10	7	12	15	2	1	1			
	(b) Girls	4	24	27	51	47	26	22	21	13	2	3	
14. Number of 4-H Club members: ¹	(a) In school	287										(b) Out of school	8

ITEM	Home demonstration agents (a)	4-H Club agents (b)	Agricultural agents (c)	County total ² (d)	
15. Number of 4-H Club teams trained.....			1	1	
16. Number of groups other than 4-H Clubs organized for extension work with rural young people 16 years of age and older.....	0			0	
17. Members in groups reported in question 16.....	0			0	
18. Total number of farm or home visits ³ made in conducting extension work.....	376		694	1070	
19. Number of different farms or homes visited.....	61		500	561	
20. Number of calls relating to extension work.....	142		6594	6736	
21. Number of news articles or stories published ⁴	30		24	54	
22. Number of individual letters written.....	380		564	944	
23. Number of different circular letters issued (not total copies mailed).....	49		115	164	
24. Number of bulletins distributed.....	298		283	581	
25. Number of radio talks broadcast or prepared for broadcasting.....			1	2	
26. Number of events at which extension exhibits were shown.....	1			2	
27. Training meetings held for local leaders or committeemen.....	(1) Adult work	(a) Number.....	6	11	17
		Total attendance of:			
		(b) Men leaders.....		147	147
	(c) Women leaders.....	54		54	
(2) 4-H Club	(a) Number.....	2		2	
	Total attendance of:		21	21	
28. Method demonstration meetings held (include all method demonstrations in both adult and 4-H Club work given by agents and specialists not reported under question 27).....	(1) Number.....	192	16	208	
	(2) Total attendance.....	1612	210	1822	
29. Meetings held at result demonstrations.....	(1) Number.....	2	2	4	
	(2) Total attendance.....	49	40	89	

¹ The total for this question should agree with county total, question 14.² County total should equal sum of preceding three columns minus duplications due to two or more agents participating in the same activity or assignment.³ Do not count a single visit to both the farm and home as two visits.⁴ Do not count letters relating to notices of meetings only.

NOTE.—Questions 15-24 refer to the total number of different activities conducted this year. The totals should equal the sums of the corresponding information reported on following pages minus duplications where the same activity relates to two or more lines of work.

GENERAL ACTIVITIES—Continued

Report Only This Year's Extension Activities and Results That Can Be Verified

ITEM		Home demonstration agents (a)	4-H Club agents (b)	Agricultural agents (c)	County total ¹ (d)
30. Tours conducted	(1) Adult work	(a) Number			
		(b) Total attendance			
	(2) 4-H Club	(a) Number		11	11
		(b) Total attendance		103	103
31. Achievement days held	(1) Adult work	(a) Number	1		1
		(b) Total attendance	285		285
	(2) 4-H Club	(a) Number	1	1	1
		(b) Total attendance	129	55	184
32. Encampments held (Do not include picnics, rallies, or short courses, as these should be reported under other meetings.)	(1) Farm women	(a) Number			
		(b) Total members attending			
		(c) Total others attending			
	(2) 4-H Club	(a) Number			
(b) Total boys attending					
(c) Total girls attending					
(d) Total others attending					
33. Other meetings of an extension nature participated in by agents or specialists and not previously reported	(1) Number	39		50	89
	(2) Total attendance	4007		2792	6799
34. Meetings held by local leaders or committeemen not participated in by agents or specialists and not reported elsewhere	(1) Adult work	(a) Number	1	30	31
		(b) Total attendance	4	554	558
	(2) 4-H Club	(a) Number	19		19
		(b) Total attendance	264		264
34j. Number of above meetings (questions 27-34) at which discussion group method of presentation was followed				12	12

SUMMARY OF EXTENSION INFLUENCE FOR YEAR

It is highly desirable for extension workers to consider the proportion of farms and farm homes in the county which have been definitely influenced to make some substantial change in farm or home operations as a result of the extension program for men, women, boys, and girls. It is recognized that this information is very difficult for agents to report accurately, so a conservative estimate based upon such records, surveys, and other sources of information as are available will be satisfactory. Such estimates should be marked "Est."

Include results of emergency activities as well as the regular extension program.

35. Number of farms in county	3683	35
36. Number of farms on which changes in practices have definitely resulted from the agricultural extension program	100	36
37. Number of farm homes in which changes in practices have definitely resulted from the home demonstration program	331	37
38. Number of other homes in which changes in practices have definitely resulted from the home demonstration program	869 est.	38
39. Number of farm homes with 4-H Club members enrolled	195	39
40. Number of other homes with 4-H Club members enrolled	75	40
41. Total number of different farm families influenced by some phase of the extension program (Include questions 36, 37, and 39, minus duplications.)	1300 est.	41
42. Total number of different other families influenced by some phase of extension program (Include questions 38 and 40, minus duplications.)	904 est.	42

¹ County total should equal sum of preceding three columns minus duplications due to two or more agents participating in the same activity or accomplishment.

NOTE.—Questions 19-34 refer to the total number of different activities conducted this year. The totals should equal the sums of the corresponding information reported on following pages minus duplications where the same activity relates to two or more lines of work.

CEREALS¹

Report Only This Year's Extension Activities and Results That Can Be Verified

ITEM	Corn (a)	Wheat (b)	Oats (c)	Rye (d)	Burley (e)	Cereal sorghums, rice, and other cereals (f)	
43. Days devoted to line of work by:							
(1) Home demonstration agents							43
(2) 4-H Club agents							
(3) Agricultural agents	28	6	1	1	4		
(4) Specialists	2						
44. Number of communities in which work was conducted	10	3	1	3	5		44
45. Number of voluntary local leaders or committeemen assisting							45
46. Days of assistance rendered by voluntary leaders or committeemen							46
47. Number of adult result demonstrations conducted	40						47
48. Number of meetings at result demonstrations							48
49. Number of method-demonstration meetings held							49
50. Number of other meetings held							50
51. Number of news stories published	1				1		51
52. Number of different circular letters issued					2		52
53. Number of farm or home visits made	60				10		53
54. Number of office calls received	50	20	2	3	20		54
55. Number of 4-H Club members enrolled	20						55
(1) Boys							
(2) Girls							
56. Number of 4-H Club members completing	7						56
(1) Boys							
(2) Girls							
57. Number of acres in projects conducted by 4-H Club members completing	6 ³ / ₄						57
58. Total yields of crops grown by 4-H Club members completing	375 bu.	bu.	bu.	bu.	bu.	bu.	58
59. Number of farmers following fertilizer recommendations	60	40			25		59
60. Number of farmers following insect-control recommendations		50					60
61. Number of farmers following disease-control recommendations		30			20		61
62. Number of farmers following marketing recommendations							62
63. Number of farmers assisted in using timely economic information as a basis for readjusting enterprise							63
66. Number of farmers following other specific practice recommendations: ⁴							66
(1)							
(2)							
(3)							
(4)							
(5)							

¹ Report fall-sown crops the year they are harvested.² Indicate crop by name.⁴ For the sake of uniformity it is suggested that each State prepare a list of the more important practices to be reported upon by all agents in that State.

LEGUMES AND FORAGE CROPS

Report Only This Year's Extension Activities and Results That Can Be Verified

ITEM	Alfalfa	Swart-clover	Red, bur, and other clovers	Vetch	Lupulus	Festuca	
	(a)	(b)	(c)	(d)	(e)	(f)	
67. Days devoted to line of work by:							
(1) Home demonstration agents							} 67
(2) 4-H Club agents							
(3) Agricultural agents	3		65		10	90	
(4) Specialists	1					1	
68. Number of communities in which work was conducted	3		13		10	20	68
69. Number of voluntary local leaders or committeemen assisting							69
70. Days of assistance rendered by voluntary leaders or committeemen							70
71. Number of adult result demonstrations conducted						400	71
72. Number of meetings at result demonstrations						2	72
73. Number of method-demonstration meetings held							73
74. Number of other meetings held				1		2	74
75. Number of news stories published							75
76. Number of different circular letters issued			5			15	76
77. Number of farm or home visits made	3		25			75	77
78. Number of office calls received	4		70		39	350	78
79. Number of 4-H Club members enrolled							} 79
(1) Boys							
(2) Girls							
80. Number of 4-H Club members completing							} 80
(1) Boys							
(2) Girls							
81. Number of acres in projects conducted by 4-H Club members completing							81
82. Total yields of crops grown by 4-H Club members completing							} 82
(1) Seed	bu.	bu.	bu.	bu.	bu.	xxxx	
(2) Forage	tons	tons	tons	tons	tons	xxxx	
83. Number of farmers following fertilizer recommendations	6		125		35	400	83
84. Number of farmers following insect-control recommendations							84
85. Number of farmers following disease-control recommendations							85
86. Number of farmers following marketing recommendations							86
87. Number of farmers assisted in using timely economic information as a basis for readjusting enterprise							87
88. Number of farmers following other specific practice recommendations: ¹							} 90
(1)							
(2)							
(3)							
(4)							
(5)							

¹ For the sake of uniformity it is suggested that each State prepare a list of the more important practices to be reported upon by all agents in that State.

LEGUMES AND FORAGE CROPS—CONTINUED

Report Only This Year's Extension Activities and Results That Can Be Verified

ITEM	Soybeans	Cowpeas and field peas	Velvet- beans	Field beans	Peanuts	All other legumes and forage crops ¹	
	(a)	(b)	(c)	(d)	(e)	(f)	
67. Days devoted to line of work by:							
(1) Home demonstration agents.....							67
(2) 4-H Club agents.....							
(3) Agricultural agents.....							
(4) Specialists.....							
68. Number of communities in which work was conducted.....							68
69. Number of voluntary local leaders or committeemen assisting.....							69
70. Days of assistance rendered by voluntary leaders or committeemen.....							70
71. Number of adult result demonstrations conducted.....							71
72. Number of meetings at result demonstrations.....							72
73. Number of method-demonstration meetings held.....							73
74. Number of other meetings held.....							74
75. Number of news stories published.....							75
76. Number of different circular letters issued.....							76
77. Number of farm or home visits made.....							77
78. Number of office calls received.....							78
79. Number of 4-H Club members enrolled.....							79
(1) Boys.....							
(2) Girls.....							
80. Number of 4-H Club members completing.....							80
(1) Boys.....							
(2) Girls.....							
81. Number of acres in projects conducted by 4-H Club members completing.....							81
82. Total yields of crops grown by 4-H Club members completing.....							82
(1) Seed.....	bu.	bu.	bu.	bu.	lb.	bu.	
(2) Forage.....	tons	tons	tons	tons	tons	tons	
83. Number of farmers following fertilizer recommendations.....							83
84. Number of farmers following insect-control recommendations.....							84
85. Number of farmers following disease-control recommendations.....							85
86. Number of farmers following marketing recommendations.....							86
87. Number of farmers assisted in using timely economic information as a basis for readjusting enterprise.....							87
90. Number of farmers following other specific practice recommendations: ²							90
(1).....							
(2).....							
(3).....							
(4).....							
(5).....							

¹ Includes crop by name.² For the sake of uniformity it is suggested that each State prepare a list of the more important practices to be reported upon by all agents in that State.

POTATOES, COTTON, TOBACCO, AND OTHER SPECIAL CROPS

Report Only This Year's Extension Activities and Results That Can Be Verified

ITEM	Irish pota- toes (a)	Sweetpota- toes (b)	Cotton (c)	Tobacco (d)	Sugar beets and all other spe- cial crops ¹ (e)	
91. Days devoted to line of work by:						
(1) Home demonstration agents						} 91
(2) 4-H Club agents						
(3) Agricultural agents	2			50	20	
(4) Specialists				2	2	
92. Number of communities in which work was conducted				20	3	92
93. Number of voluntary local leaders or committeemen assisting						93
94. Days of assistance rendered by voluntary leaders or commit- teemen						94
95. Number of adult result demonstrations conducted						95
96. Number of meetings at result demonstrations						96
97. Number of method-demonstration meetings held						97
98. Number of other meetings held				50	3	98
99. Number of news stories published				3	2	99
100. Number of different circular letters issued				10	10	100
101. Number of farm or home visits made	1			70	55	101
102. Number of office calls received	20			4140	75	102
103. Number of 4-H Club members enrolled				4		} 103
(1) Boys						
(2) Girls						
104. Number of 4-H Club members completing				3		} 104
(1) Boys						
(2) Girls						
105. Number of acres in projects conducted by 4-H Club members completing				2		105
106. Total yields of crops grown by 4-H Club members completing	bu.	bu.	lb. ²	1850lb.		106
107. Number of farmers following fertilizer recommendations				300	20	107
108. Number of farmers following insect-control recommendations				1000		108
109. Number of farmers following disease-control recommendations				150		109
110. Number of farmers following marketing recommendations					32	110
111. Number of farmers assisted in using timely economic informa- tion as a basis for readjusting enterprise						111
114. Number of farmers following other specific practice recom- mendations: ³						} 114
(1) _____						
(2) _____						
(3) _____						
(4) _____						
(5) _____						

¹ Indicate crop by name.

² Report yield of cotton in pounds of seed cotton.

³ For the sake of uniformity it is suggested that each State prepare a list of the more important practices to be reported upon by all agents in that State.

FRUITS, VEGETABLES, AND BEAUTIFICATION OF HOME GROUNDS

Report Only This Year's Extension Activities and Results That Can Be Verified

ITEM	Home	Market	Improve-	Tree	Bush and	Grapes	
	gardens	gardening, truck, and ornamental crops	ment of home grounds	fruit	small fruits		
	(a)	(b)	(c)	(d)	(e)	(f)	
115. Days devoted to line of work by:							
(1) Home demonstration agents			24				115
(2) 4-H Club agents							
(3) Agricultural agents	1			2	1		
(4) Specialists	1				1		
116. Number of communities in which work was conducted	1		13	6	3		116
117. Number of voluntary local leaders or committeemen assisting			15				117
118. Days of assistance rendered by voluntary leaders or committeemen			17				118
119. Number of adult result demonstrations conducted							119
120. Number of meetings at result demonstrations							120
121. Number of method-demonstration meetings held			15				121
122. Number of other meetings held	1				1		122
123. Number of news stories published			5				123
124. Number of different circular letters issued	9		7	10			124
125. Number of farm or home visits made	3		38	4	10		125
126. Number of office calls received	20		48	15	25		126
127. Number of 4-H Club members enrolled:							127
(1) Boys							
(2) Girls			78				
128. Number of 4-H Club members completing:							128
(1) Boys							
(2) Girls			40				
129. Number of acres in projects conducted by 4-H Club members completing			XXXX				129
130. Total yields of crops grown by 4-H club members completing	bu.	bu.	XXXX	bu.	bu.	bu.	130
131. Number of farms or homes where fertilizer recommendations were followed	20			10	15		131
132. Number of farms or homes where insect-control recommendations were followed	300			15			132
133. Number of farms or homes where disease-control recommendations were followed	20						133
134. Number of farms or homes where marketing recommendations were followed			XXXX				134
135. Number of farms or homes where assistance was given in using timely economic information as a basis for readjusting enterprise			XXXX				135
136. Number of homes where recommendations were followed as to establishment or care of lawn	XXXX	XXXX	30	XXXX	XXXX	XXXX	136
137. Number of homes where recommendations were followed regarding planting of shrubbery and trees	XXXX	XXXX	75	XXXX	XXXX	XXXX	137
138. Number of homes where recommendations were followed as to treatment of walks, drives, or fences	XXXX	XXXX	31	XXXX	XXXX	XXXX	138
139. Number of homes where recommendations were followed as to improving appearance of exterior of house and outbuildings	XXXX	XXXX	6	XXXX	XXXX	XXXX	139
140. Number of homes where other specific practice recommendations were followed:							140
(1) <i>Flower borders</i>			45				
(2) <i>Outdoor living interest</i>			44				
(3)							
(4)							

* For the sake of uniformity it is suggested that each State prepare a list of the more important practices to be reported upon by all agents in that State.

FORESTRY, WILDLIFE CONSERVATION, AND AGRICULTURAL ENGINEERING

Report Only This Year's Extension Activities and Results That Can Be Verified

ITEM	Forestry (a)	Wildlife conservation, fur and game farming (b)	Agricultural engineering ¹ (farm and home) (c)	
141. Days devoted to line of work by:				
(1) Home demonstration agents.....			5	141
(2) 4-H Club agents.....				
(3) Agricultural agents.....	2		1	
(4) Specialists.....	1			
142. Number of communities in which work was conducted.....	1		11	142
143. Number of voluntary local leaders or com- mitteemen assisting.....			9	143
144. Days of assistance rendered by voluntary leaders or committeemen.....			26	144
145. Number of adult result demonstrations con- ducted.....				145
146. Number of meetings at result demonstrations.....				146
147. Number of method-demonstration meetings held.....				147
148. Number of other meetings held.....			8	148
149. Number of news stories published.....	1		1	149
150. Number of different circular letters issued.....			3	150
151. Number of farm or home visits made.....	2		41	151
152. Number of office calls received.....	1		88	152
153. Number of 4-H Club mem- bers enrolled.....				153
(1) Boys.....				
(2) Girls.....				
154. Number of 4-H Club mem- bers completing.....				154
(1) Boys.....				
(2) Girls.....				
154j. Number of 4-H Club mem- bers not in special project clubs who participated in forestry or wildlife conser- vation activities.....			XXXXXXXXXX	154j
(1) Boys.....			XXXXXXXXXX	
(2) Girls.....				
	(1) Transplant beds	Coverts ² improved or built	Acres terraced.....	155
	(2) Acres planted to forest trees	Nest boxes, feed trays for song birds.....	Machines or equip- ment repaired.....	
155. Number of units handled by 4-H Club mem- bers completing. (This refers to questions 154 and 154j).....	(3) Acres improved	Feeding stations operated.....	Articles made.....	
	(4) Acres of wood- land protect- ed from fire	Animals or birds produced.....	Equipment installed.....	

FORESTRY—Continued

156. Number of farms on which new areas were reforested by planting with small trees.....	6	156
157. Acres involved in preceding question.....	12	157
158. Number of farmers planting windbreaks or shelterbelts.....		158
159. Number of farmers planting trees for erosion control.....	6	159
160. Number of farmers making improved thinnings and weedings.....		160
161. Number of farmers practicing selection cutting.....		161
162. Number of farmers pruning forest trees.....		162
163. Number of farmers cooperating in prevention of forest fire.....		163
164. Number of farmers adopting improved practices in production of naval stores.....		164
165. Number of farmers adopting improved practices in production of maple sugar and sirup.....		165

¹ 4-H farm shop clubs should be reported under this heading.² Include food patches planted or left standing for wildlife.

FORESTRY—Continued

Report Only This Year's Extension Activities and Results That Can Be Verified

166. Number of farmers assisted in timber estimating and appraisal.....	166
167. Number of farmers following wood-preservation recommendations.....	167
168. Number of farmers following recommendations in the marketing of forest products.....	168

WILDLIFE CONSERVATION—Continued

169. Number of farms on which specific improvements for wildlife have been made.....	169
--	-----

ITEM	RABBITS		FOXES AND OTHER FUR ANIMALS		GAME BIRDS		CONSERVATION CAMPS		
	4-H members (e)	Adults (b)	4-H members (c)	Adults (d)	4-H members (f)	Adults (g)	4-H members (h)	Adults (i)	
169j. Number of individuals engaged or assisted in activity.....									169j
169k. Number of animals or birds produced by such individuals.....							X X X X	X X X X	169k

AGRICULTURAL ENGINEERING—Continued

Engineering activities	Number of farms (a)	Number of units (b)	Total value of services or savings (c)	
170. Terracing complete with outlets and contour cultivation.....		acres.	\$.....	170
170j. Growing crops on contour.....		acres.		170j
170k. Gully control.....		acres.		170k
171. Drainage practices.....		acres.		171
172. Irrigation practices.....		acres.		172
173. Land-clearing practices.....		acres.		173
174. Better types of machines.....		machines.		174
175. Maintenance and repair of machines.....		machines.		175
176. Efficient use of machinery.....		X X X X X X X X X		176
176j. Better ginning of cotton.....		gin stands		176j
177. All buildings constructed (include silos).....	10	10 buildings.	\$ 30.00	177
178. Buildings remodeled, repaired, painted.....	80	91 buildings.	200.00	178
179. Farm electrification.....		farms. ¹		179
180. Home equipment (include sewing machines).....	25	25	15.00	180
181. Total of columns (a) and (c).....	farms.	X X X X X X X X X	\$.....	181

182. Number of machines repaired as reported in questions 175 and 180, by types: (a) Tractors.....									
(b) Tillage implements.....		(c) Harvesters and threshers.....		(d) Plows.....					182
(e) Mowers.....		(f) Planters.....		(g) Sewing machines.....		(h) Other.....			

183. Number of buildings and equipment improved as reported in questions 177, 178, 179, 180, by types:									
(a) Dwellings constructed according to plans furnished.....		(A) Dairy buildings.....							
(b) Dwellings remodeled according to plans furnished.....	2	(i) Silos.....	(1) Regular.....						
(c) Sewage systems installed.....	3	(2) Trench or pit.....							
(d) Water systems installed.....	4	(j) Hog houses.....							183
(e) Heating systems installed.....	7	(k) Poultry houses.....							
(f) Lighting systems installed.....	420	(l) Storage structures.....							
(g) Home appliances and machines.....	28	(m) Other walls, etc.....							6

¹ Report the number of farms using electricity in farm enterprises for income-producing purposes such as electric milking, milk cooling, incubating, brooding, heated heating, etc.

POULTRY AND BEES

Report Only This Year's Extension Activities and Results That Can Be Verified

ITEM	Poultry (including turkeys) (a)	Bees (b)	
184. Days devoted to line of work by:			
(1) Home demonstration agents	3		184
(2) 4-H Club agents			
(3) Agricultural agents	15	2	
(4) Specialists		2	
185. Number of communities in which work was conducted	15		185
186. Number of voluntary local leaders or committeemen assisting			186
187. Days of assistance rendered by voluntary leaders or committeemen			187
188. Number of adult result demonstrations conducted			188
189. Number of meetings at result demonstrations			189
190. Number of method-demonstration meetings held	3		190
191. Number of other meetings held	3		191
192. Number of news stories published	1		192
193. Number of different circular letters issued	4		193
194. Number of farm or home visits made	39	20	194
195. Number of office calls received	10	10	195
196. Number of 4-H Club members enrolled	(1) Boys 2 (2) Girls 10		196
197. Number of 4-H Club members completing	(1) Boys 7 (2) Girls		
198. Number of units in projects conducted by 4-H Club members completing	518 chickens	colonies	198

POULTRY—Continued

199. Number of families following an organized improved breeding plan as recommended		2	199
200. Number of families following recommendations in purchasing baby chicks		45	200
201. Number of families following recommendations in chick rearing		66	201
202. Number of families following production-feeding recommendations		33	202
203. Number of families following sanitation recommendations in disease and parasite control		76	203
204. Number of families improving poultry-house equipment according to recommendations		15	204
205. Number of families following marketing recommendations		3	205
206. Number of families assisted in using timely economic information as a basis for readjusting enterprise			206
207. Number of families following other specific practice recommendations: ¹			207
(a) _____			
(b) _____			

BEES—CONTINUED

208. Number of farmers following recommendations in transferring colonies to modern hives			208
209. Number of colonies involved in question 208			209
210. Number of farmers following disease-control recommendations			210
211. Number of farmers following queenrearing recommendations			211
212. Number of farmers following marketing recommendations			212
213. Number of farmers following other specific practice recommendations: ¹			213
(a) _____		25	
(b) _____			

¹ For the sake of uniformity it is suggested that each State prepare a list of the more important practices to be reported upon by all agents in that State.

DAIRY CATTLE, BEEF CATTLE, SHEEP, SWINE, AND HORSES

Report Only This Year's Extension Activities and Results That Can Be Verified

ITEM	Dairy cattle (a)	Beef cattle (b)	Sheep (c)	Swine (d)	Horses and mules (e)	Other livestock ¹ (f)	
214. Days devoted to line of work by:							
(1) Home demonstration agents							214
(2) 4-H Club agents							
(3) Agricultural agents	10	85	38	18	25		
(4) Specialists	2	1	2				
215. Number of communities in which work was conducted		20	20	10	10		215
216. Number of voluntary local leaders or committeemen assisting							216
217. Days of assistance rendered by voluntary leaders or committeemen							217
218. Number of adult result demonstrations conducted					3		218
219. Number of meetings at result demonstrations							219
220. Number of method-demonstration meetings held							220
221. Number of other meetings held	2	3					221
222. Number of news stories published		1	2		1		222
223. Number of different circular letters issued	2	3	4		2		223
224. Number of farm or home visits made	5	90	120	30	40		224
225. Number of office calls received	35	380	250	25	20		225
226. Number of 4-H Club members enrolled		7	5	14			226
(1) Boys							
(2) Girls							
227. Number of 4-H Club members completing		2	1	4			227
(1) Boys							
(2) Girls							
228. Number of animals in projects conducted by 4-H Club members completing							228
229. Number of farmers assisted in obtaining purebred sires		10	10	27			229
230. Number of farmers assisted in obtaining high-grade or purebred females		8	8	1			230
231. Number of bull, boar, ram, or stallion circles or clubs organized or assisted		5	5				231
232. Number of members in preceding circles or clubs							232
233. Number of herd or flock-improvement associations organized or assisted							233
234. Number of members in these associations							234
235. Number of farmers not in associations keeping performance records of animals							235
236. Number of families assisted in home butchering, meat cutting, and curing	XXXX				XXXX		236
237. Number of families assisted in butter and cheese making		XXXX	XXXX	XXXX	XXXX	XXXX	237
238. Number of farmers following parasite-control recommendations		50	65	25	50		238
239. Number of farmers following disease-control recommendations		350		60			239
240. Number of farmers following marketing recommendations		25	78				240
241. Number of farmers assisted in using timely economic information as a basis for readjusting enterprise							241

¹Do not include rabbits, guinea, and fer animals, which should be reported under Wildlife Conservation.

AGRICULTURAL ECONOMICS

Report Only This Year's Extension Activities and Results That Can Be Verified

ITEM	Public problems and economic planning on county or community basis ¹	FARM MANAGEMENT			Outlook	Marketing, buying, selling, and financing	
		Farm records (inventories, accounts, etc.)	Individual farm planning	Farm and home planning (short and long time)			
	(a)	(b)	(c)	(d)	(e)	(f)	
244. Days devoted to line of work by:							
(1) Home demonstration agents					2		
(2) 4-H Club agents							244
(3) Agricultural agents	3	20	5				
(4) Specialists							
245. Number of communities in which work was conducted					12		
246. Number of voluntary local leaders or committeemen assisting					12		246
247. Days of assistance rendered by voluntary leaders or committeemen					2		247
248. Number of adult result demonstrations conducted							248
249. Number of meetings at result demonstrations							249
250. Number of method-demonstration meetings held					12		250
251. Number of other meetings held					1		251
252. Number of news stories published					1		252
253. Number of different circular letters issued							253
254. Number of farm or home visits made		40	10		12		254
255. Number of office calls received		35	20		5		255
256. Number of 4-H Club members enrolled	(1) Boys	XXXX		XXXX	XXXX	XXXX	256
	(2) Girls	XXXX		XXXX	XXXX	XXXX	
257. Number of 4-H Club members completing	(1) Boys	XXXX		XXXX	XXXX	XXXX	257
	(2) Girls	XXXX		XXXX	XXXX	XXXX	
258. Number of farmers keeping farm accounts throughout the year under supervision of agent					30		258
259. Number of farmers keeping cost-of-production records under supervision of agent							259
260. Number of farmers assisted in summarizing and interpreting their accounts					30		260
261. Number of farmers assisted in making inventory or credit statements							261
262. Number of farmers assisted in obtaining credit					78		262
262½. Number of 4-H Club members receiving instruction in credit							262½
263. Number of farmers assisted in making mortgage or other debt adjustments							263
264. Number of farm credit associations assisted in organizing during the year							264
265. Number of farm business or enterprise-survey records taken during year							265
266. Number of farmers making recommended changes in their business as result of keeping accounts or survey records							266
267. Number of other farmers adopting cropping, livestock, or complete farming systems according to recommendations							267
268. Number of farmers advised relative to leases							268
269. Number of farmers assisted in developing supplemental sources of income							269
270. Number of families assisted in reducing cash expenditure:							270
(a) By exchange of labor or machinery							
(b) By bartering farm or home products for other commodities or services					72		
(c) By producing larger part of food on farm					162		
(d) By making own repairs of buildings and machinery							

¹ Include county agricultural planning, taxation, land utilization, and economic basis of extension programs.

AGRICULTURAL ECONOMICS—Continued

Report Only This Year's Extension Activities and Results That Can Be Verified

271. Number of urban families moving to farms who have been assisted in getting established.....	271
272. Number of farm families on relief assisted to become self-supporting.....	272
273. Number of marketing associations or groups ¹ assisted in organizing during the year.....	273
274. Number of marketing associations or groups ¹ previously organized assisted by extension agents this year.....	274
275. Membership in associations and groups organized or assisted (273 and 274).....	275
276. Number of individuals (not in associations) assisted with marketing problems.....	276
276½. Number of 4-H Club members receiving instruction in marketing.....	276½
277. Number of families following other specific practice recommendations.....	277

ITEM	Standard- izing, packaging, or grading	Processing or manu- facturing	Leasing markets and transportation	Use of current market informa- tion	Financing	Organiza- tion	Accounting	Keeping member- ship interest	
	(a)	(b)	(c)	(d)	(e)	(f)	(g)	(h)	
278. Number of organizations assisted with problems of.....	2		2					2	278
279. Number of individuals (not in organizations) assisted with problems of.....					XXXX	XXXX	XXXX	XXXX	279

ITEM	Hay and grain	Cotton	Tobacco	Dairy products	Livestock	Wool	
	(a)	(b)	(c)	(d)	(e)	(f)	
280. Value of products sold by all associations or groups organized or assisted.....	\$.....	\$.....	\$.....	\$.....	\$49.00	\$234.00	280
281. Value of products sold by individuals (not in organizations) assisted.....	\$.....	\$.....	\$.....	\$.....	\$.....	\$.....	281

ITEM	Fruits and vegetables	Poultry and eggs	Home products				
			Food	Handicraft			
							(g)
280. Value of products sold by all associations or groups organized or assisted.....	\$48.00	\$.....	\$.....	\$.....	\$.....	\$.....	280
281. Value of products sold by individuals (not in organizations) assisted.....	\$.....	\$.....	\$.....	\$.....	\$.....	\$.....	281

ITEM	Livestock	Feed for livestock	Farm equipment	Oil and gas	Fertilizer, seed, and other farm supplies	Home equipment	Home supplies	
	(a)	(b)	(c)	(d)	(e)	(f)	(g)	
282. Value of supplies purchased by all associations or groups organized or assisted.....	\$.....	\$.....	\$.....	\$.....	\$100.00	\$.....	\$.....	282
283. Value of supplies purchased by individuals (not in organizations) assisted.....	\$.....	\$.....	\$.....	\$.....	\$.....	\$.....	\$.....	283

¹ Include independent local associations, units of federations, branches of centralized organizations, terminal sales agencies, production associations which do buying or selling, and curb and home demonstration club markets.

FOODS AND NUTRITION

Report Only This Year's Extension Activities and Results That Can Be Verified

ITEM	Food selection and preparation (a)	Food preservation (b)	
284. Days devoted to line of work by:			
(1) Home demonstration agents.....	18	3	} 284
(2) 4-H Club agents.....			
(3) Agricultural agents.....			
(4) Specialists.....			
285. Number of communities in which work was conducted.....	7	11	285
286. Number of voluntary local leaders or committeemen assisting.....	3	7	286
287. Days of assistance rendered by voluntary leaders or committeemen.....	8	12	287
288. Number of adult result demonstrations conducted.....			288
289. Number of meetings at result demonstrations.....			289
290. Number of method-demonstration meetings held.....			} 290
(1) By agents or specialists.....	21		
(2) By leaders.....	5		
291. Number of other meetings held.....			} 291
(1) By agents or specialists.....			
(2) By leaders.....			
292. Number of news stories published.....	5	3	292
293. Number of different circular letters issued.....	2	2	293
294. Number of farm or home visits made.....	18	5	294
295. Number of office calls received.....	19	59	295
296. Number of 4-H Club members enrolled.....			} 296
(1) Boys.....			
(2) Girls.....	20		
297. Number of 4-H Club members completing.....			} 297
(1) Boys.....			
(2) Girls.....	15		
298. Number of units in projects conducted by 4-H Club members completing:			
(a) Dishes of food products prepared.....		(b) Meals planned and served.....	} 298
(c) Quarts canned 1033.....		(d) Other containers of jelly, jam, and other products 147.....	
(e) Pounds of vegetables and fruits stored or dried.....			
299. Number of families budgeting food expenditure for a year.....			
300. Number of families following food-buying recommendations.....			300
301. Number of families serving better-balanced meals.....			301
302. Number of families improving home-packed lunches according to recommendations.....		43	302
303. Number of schools following recommendations for a hot dish or school lunch.....		2	303
304. Number of children involved in question 303.....		300	304
305. Number of families following recommended methods of child feeding.....			305
306. Number of individuals adopting recommendations for corrective feeding (such as weight control, anemia, pellagra, and constipation).....		1	306
307. Number of families producing and preserving home food supply according to annual food-supply budget 103.....			307
308. Number of families assisted in the canning or otherwise preserving of fruits, vegetables, and meats.....		275	308
309. Number of quarts canned by families reported under question 308. (Do not include 4-H Club members) 26221.....			309
310. Number of other containers of jam, jelly, or other products made by families reported under question 308. (Do not include 4-H Club members) 20131.....			310
311. Total estimated value of all products canned or otherwise preserved (questions 298, 309, 310) 22262.81.....			311
312. Number of families following recommendations for the storage of home food supply.....		3	312
313. Number of families assisted in using timely economic information as a basis for readjusting family food supply.....		59	313

CHILD DEVELOPMENT AND PARENT EDUCATION

Report Only This Year's Extension Activities and Results That Can Be Verified

314. Days devoted to line of work by:		
(a) Home demonstration agents.....	} 314
(b) 4-H Club agents.....	
(c) Agricultural agents.....	
(d) Specialists.....	
315. Number of communities in which work was conducted.....		315
316. Number of voluntary local leaders or committeemen assisting.....		316
317. Days of assistance rendered by voluntary leaders or committeemen.....		317
318. Number of adult result demonstrations conducted.....		318
319. Number of meetings at result demonstrations.....		319
320. Number of method-demonstration meetings held.....	{ (a) By agents or specialists..... (b) By leaders.....	} 320
321. Number of other meetings held.....	{ (a) By agents or specialists..... (b) By leaders.....	} 321
322. Number of news stories published.....		322
323. Number of different circular letters issued.....		323
324. Number of farm or home visits made.....		324
325. Number of office calls received.....		325
326. Number of 4-H Club members enrolled.....	{ (a) Boys..... (b) Girls.....	} 326
327. Number of 4-H Club members completing.....	{ (a) Boys..... (b) Girls.....	} 327
328. Number of 4-H Club members not in special child-development projects who participated in definite child-development work.....		328
329. Number of families improving habits of children.....		329
330. Number of families substituting positive methods of discipline for negative ones.....		330
331. Number of families providing recommended play equipment.....		331
332. Number of families following recommendations regarding furnishings adapted to children's needs.....		332
333. Number of different individuals participating in child-development and parent-education program.....	{ (a) Men..... (b) Women.....	} 333
334. Number of children involved in question 333.....		334
335. Number of families following other specific practice recommendations: ¹		
(a).....	} 335
(b).....	
(c).....	
(d).....	
(e).....	

¹ For the sake of uniformity it is suggested that each State prepare a list of the more important practices to be reported upon by all agents in that State.

CLOTHING

Report Only This Year's Extension Activities and Results That Can Be Verified

336. Days devoted to line of work by:			
(a) Home demonstration agents	18		} 336
(b) 4-H Club agents			
(c) Agricultural agents			
(d) Specialists			
337. Number of communities in which work was conducted	10		337
338. Number of voluntary local leaders or committeemen assisting	6		338
339. Days of assistance rendered by voluntary leaders or committeemen	15		339
340. Number of adult result demonstrations conducted			340
341. Number of meetings at result demonstrations			341
342. Number of method-demonstration meetings held	(a) By agents or specialists	3	} 342
	(b) By leaders	6	
343. Number of other meetings held	(a) By agents or specialists		} 343
	(b) By leaders		
344. Number of news stories published			344
345. Number of different circular letters issued	1		345
346. Number of farm or home visits made	10		346
347. Number of office calls received	28		347
348. Number of 4-H Club members enrolled	(a) Boys		} 348
	(b) Girls	63	
349. Number of 4-H Club members completing	(a) Boys		} 349
	(b) Girls	40	
350. Number of articles made by 4-H Club members completing	(a) Dresses	46	} 350
	(b) Other	70	

ITEM	Adults	Juniors	
	(a)	(b)	
351. Number of individuals following recommendations in construction of clothing	12	48	351
352. Number of individuals following recommendations in the selection of clothing	16	18	352
353. Number of individuals keeping clothing accounts		24	353
354. Number of individuals budgeting clothing expenditures			354
355. Number of families following clothing-buying recommendations	4	x x x x x	355
356. Number of individuals improving children's clothing according to recommendations			356
357. Number of individuals following recommendations in improving care, renovation, and remodeling of clothing	8	34	357
358. Number of families assisted in using timely economic information in determining how best to meet clothing requirements		x x x x x	358
359. Total estimated savings due to clothing program	\$ 230.00	\$ 197.00	359
360. Number of individuals following other specific practice recommendations: ¹	(a) <i>Improvement in Dressing</i>	28	} 360
	(b)		

¹ For the sake of uniformity it is suggested that each State prepare a list of the more important practices to be reported upon by all agents in that State.

HOME MANAGEMENT AND HOUSE FURNISHINGS

Report Only This Year's Extension Activities and Results That Can Be Verified

ITEM	Home management (a)	Home furnishings (b)	Handicraft (c)
361. Days devoted to line of work by:			
(1) Home demonstration agents.....	16	174	
(2) 4-H Club agents.....			
(3) Agricultural agents.....			
(4) Specialists.....			
362. Number of communities in which work was conducted.....	10	13	
363. Number of voluntary local leaders or committeemen assisting.....			
364. Days of assistance rendered by voluntary leaders or committeemen.....			
365. Number of adult result demonstrations conducted.....		2	
366. Number of meetings at result demonstrations.....		49	
367. Number of method-demonstration meetings held.....	1	114	
(1) By agents or specialists.....		28	
(2) By leaders.....			
368. Number of other meetings held.....			
(1) By agents or specialists.....			
(2) By leaders.....			
369. Number of news stories published.....	4	10	
370. Number of different circular letters issued.....	8	23	
371. Number of farm or home visits made.....	48	196	
372. Number of office calls received.....	36	142	
373. Number of 4-H Club members enrolled.....			
(1) Boys.....			
(2) Girls.....		117	
374. Number of 4-H Club members completing.....			
(1) Boys.....			
(2) Girls.....		70	
375. Number of units in projects conducted by 4-H Club members completing.....			
		{ +6 rooms 197 articles }	articles

HOME MANAGEMENT—Continued

376. Number of kitchens rearranged or improved for convenience according to recommendations.....	24	376
377. Number of families following recommendations in obtaining labor-saving equipment.....	30	377
378. Number of families adopting recommended laundering methods.....		378
379. Number of families assisted in home soap making.....		379
380. Number of families adopting recommended methods in care of house.....	10	380
381. Number of families assisted in making home-made equipment or conveniences.....	5	381
382. Number of women following a recommended schedule for home activities.....		382
383. Number of 4-H Club members keeping personal accounts.....	no marks 119 - no. 119	75
384. Number of families keeping home accounts according to a recommended plan.....	6	384
385. Number of families budgeting expenditures in relation to income according to a recommended plan.....	4	385
386. Number of families assisted in developing home industries as a means of supplementing income.....		386
387. Number of families following recommended methods in buying for the home (other than foods and clothing).....	4	387
388. Number of families assisted in using timely economic information as a basis for readjusting family living (other than reported under foods and clothing).....		388
389. Number of families assisted in making adjustments in home making to gain a more satisfactory standard of living.....		389

HOME MANAGEMENT—Continued

390. Number of families having increased time for rest and leisure activities as a result of the home-management program.....	390
391. Total estimated saving due to home-management program..... \$.....	391
392. Number of families following other specific practice recommendations: ¹	
(a)	} 392
(b)	

HOUSE FURNISHINGS—Continued

393. Number of families improving the selection of household furnishings.....	159	393
394. Number of families following recommendations in improving methods of repairing, remodeling, or refinishing furniture.....	103	394
395. Number of families following recommendations in improving treatment of windows (shades, curtains, draperies).....	60	395
396. Number of families following recommendations in improving arrangement of rooms (other than kitchens).....	95	396
397. Number of families improving treatment of walls, woodwork, and floors.....	55	397
398. Number of families applying principles of color and design in improving appearance of rooms.....	63	398
399. Total estimated savings due to house-furnishings program.....	\$1,338.85	399
400. Number of families following other specific practice recommendations: ¹		
(a) <i>Living porch, back porch, outdoor living room improved</i>	17	} 400
(b) <i>Storage space improved</i>	39	

HANDICRAFT—Continued

401. Number of families following recommendations regarding handicraft.....	70	401
402. Number of families following other specific practice recommendations: ¹		
(a)	} 402	
(b)		

HOME HEALTH AND SANITATION

¹ Report Only This Year's Extension Activities and Results That Can Be Verified

403. Days devoted to line of work by:		
(a) Home demonstration agents.....	2	} 403
(b) 4-H Club agents.....		
(c) Agricultural agents.....		
(d) Specialists.....		
404. Number of communities in which work was conducted.....	5	404
405. Number of voluntary local leaders or committeemen assisting.....	1	405
406. Days of assistance rendered by voluntary leaders or committeemen.....	3	406
407. Number of adult result demonstrations conducted.....		407
408. Number of meetings at result demonstrations.....		408
409. Number of method-demonstration meetings held. {		} 409
(a) By agents or specialists.....		
(b) By leaders.....		
410. Number of other meetings held. {		} 410
(a) By agents or specialists.....		
(b) By leaders.....	3	
411. Number of news stories published.....		411
412. Number of different circular letters issued.....		412
413. Number of farm or home visits made.....	10	413
414. Number of office calls received.....	10	414

¹ For the sake of uniformity it is suggested that each State prepare a list of the more important practices to be reported upon by all agents in that State

HOME HEALTH AND SANITATION—Continued

415. Number of 4-H Club members enrolled.....	(a) Boys.....	} 415
	(b) Girls.....	
416. Number of 4-H Club members completing.....	(a) Boys.....	} 416
	(b) Girls.....	
417. Number of 4-H Club members not in special health projects who participated in definite health-improvement work.....	(a) Boys.....	} 417
	(b) Girls..... 85	
418. Number of individuals having health examination on recommendation of extension workers or participating in health contests.....	(a) 4-H Club members.....	} 418
	(b) Others..... 73	
419. Number of individuals improving health habits according to recommendations.....	12	419
420. Number of individuals improving posture according to recommendations.....	39	420
421. Number of individuals adopting recommended positive preventive measures to improve health (immunization for typhoid, diphtheria, smallpox, etc.).....	93	421
422. Number of families adopting better home-nursing procedure according to recommendations.....	12	422
423. Number of families installing sanitary closets or outhouses according to recommended plans.....	45	423
424. Number of homes screened according to recommendations.....	24	424
425. Number of families following other recommended methods of controlling flies, mosquitoes, and other insects.....	4	425
426. Number of individuals enjoying improved health as a result of health and sanitation program.....		426
427. Number of families following other specific practice recommendations: ¹		} 427
(a) General clean-up of premises (clean-up week - Co. Campaign).....	241	
(b)		

EXTENSION ORGANIZATION AND COMMUNITY ACTIVITIES

Report Only This Year's Extension Activities and Results That Can Be Verified

ITEM	Extension organization and program making	Community or country-life activities	
	(a)	(b)	
428. Days devoted to line of work by:			
(1) Home demonstration agents.....	22	8	} 428
(2) 4-H Club agents.....			
(3) Agricultural agents.....	16		
(4) Specialists.....			
429. Number of communities in which work was conducted.....	35	12	429
430. Number of voluntary local leaders or committeemen assisting.....	48	14	430
431. Days of assistance rendered by voluntary leaders or committeemen.....	200	18	431
432. Number of meetings held.....	70	6	432
433. Number of news stories published.....	7		433
434. Number of different circular letters issued.....	46	1	434
435. Number of farm or home visits made.....	139	28	435
436. Number of office calls received.....	146	53	436

¹ For the sake of uniformity it is suggested that each State prepare a list of the more important practices to be reported upon by all agents in that State.

COMMUNITY OR COUNTRY-LIFE ACTIVITIES—Continued

437. Number of communities assisted in making social or country-life surveys, or in scoring themselves or their community organizations.....	437
438. Number of country-life conferences or training meetings conducted for community leaders.....	438
439. Number of community groups assisted with organizational problems, programs of activities, or meeting programs.....	439
440. Number of communities developing recreation according to recommendations.....	440
441. Number of families following recommendations as to home recreation.....	441
442. Number of community or county-wide pageants or plays presented.....	442
443. Number of community houses, clubhouses, permanent camps, or community rest rooms established for.....	443
(a) Adults.....	
(b) Juniors.....	
444. Number of communities assisted in establishing work centers for canning, seed treatment, meat curing, etc.....	444
445. Number of communities assisted in improving hygienic or public-welfare practices.....	445
446. Number of school or other community grounds improved in accordance with plans furnished.....	446
447. Number of communities assisted in providing library facilities.....	447
448. Number of 4-H Clubs engaging in community activities, such as improving school grounds, conducting local fairs, etc.....	448
449. Number of families aided in obtaining assistance from Red Cross or other relief agency.....	449

MISCELLANEOUS ACTIVITIES

Report Only This Year's Extension Activities and Results That Can Be Verified

ITEM	Coyotes and other predatory animals	Rodents	General Insect Infestations	Weeds	
	(a)	(b)	(c)	(d)	
450. Days devoted to line of work by:					
(1) Home demonstration agents.....					450
(2) 4-H Club agents.....					
(3) Agricultural agents.....			2	6	
(4) Specialists.....					
451. Number of communities in which work was conducted.....					451
452. Number of voluntary local leaders or committeemen assisting.....					452
453. Days of assistance rendered by voluntary leaders or committeemen.....					453
454. Number of adult result demonstrations conducted.....					454
455. Number of meetings at result demonstrations.....					455
456. Number of method-demonstration meetings held.....					456
457. Number of other meetings held.....					457
458. Number of news stories published.....					458
459. Number of different circular letters issued.....					459
460. Number of farm or home visits made.....			6	10	460
461. Number of office calls received.....			30	45	461
462. Number of farmers following recommendations.....			10	10	462
463. Pounds of poison used, or acres of weeds controlled.....				25	463
464. Total estimated saving due to control program.....	\$	\$	\$55.00	\$2000.00	464

MISCELLANEOUS 4-H CLUBS (Indicate by name)

ITEM	Leadership				
	(a)	(b)	(c)	(d)	
465. Number of 4-H Club members enrolled.....					465
(1) Boys.....					
(2) Girls.....					
466. Number of 4-H Club members completing.....					466
(1) Boys.....					
(2) Girls.....					

¹ Include grasshoppers, army worms, chinch bugs, and other insects not reported under specific crop or livestock headings.

US-4225

SOIL CONSERVATION AND OTHER WORK

ITEM	Soil conservation	All other work	
	(a)	(b)	
467. Days devoted to line of work by:			
(1) Home demonstration agents.....			} 467
(2) 4-H Club agents.....			
(3) Agricultural agents.....	10	11	
(4) Specialists.....			
468. Number of communities in which work was conducted.....	10	20	468
469. Number of voluntary local leaders or committeemen assisting.....			469
470. Days of assistance rendered by voluntary leaders or committeemen.....			470
471. Number of adult result demonstrations conducted.....			471
471½. Number of meetings at result demonstrations.....			471½
472. Number of method-demonstration meetings held.....			472
473. Number of other meetings held.....			473
474. Number of news stories published.....	4	3	474
475. Number of different circular letters issued.....			475
476. Number of farm or home visits made.....	15	40	476
477. Number of office calls received.....	50	700	477
478. Number of 4-H Club members enrolled. (Do not include work previously reported.)	(1) Boys.....	x x x x	} 478
	(2) Girls.....	x x x x	
479. Number of 4-H Club members completing. (Do not include work previously reported.)	(1) Boys.....	x x x x	} 479
	(2) Girls.....	x x x x	
479½. Number of units in projects conducted by 4-H Club members completing. (Do not include work previously reported.)		x x x x	479½

SOIL CONSERVATION—Continued

ITEM	Number of units		
	(a)	(b)	
480. Tests for soil acidity.....	50	500	acres. 480
481. Applying lime materials.....	350	7000	tons. 481
482. Tests for plant-food deficiencies.....	20	160	acres. 482
483. Applying recommended fertilizers.....	600		tons. 483
484. Proper land use—based on soil types (use of soil-survey maps).....	25	1500	acres. 484
485. Using recommended crop rotations.....	300	18,000	acres. 485
486. Plowing under green manure.....	25	75	acres. 486
487. Controlling soil blowing.....			acres. 487
488. Strip cropping.....	5	50	acres. 488
489. Using cover crops.....	300	18,000	acres. 489
490. Approved summer-fallow.....			acres. 490
491. Constructing terraces. (Reported under question 170, p. 13.).....	x x x x	x x x x	491
492. Controlling gullies. (Reported under question 170, p. 13.).....	x x x x	x x x x	492
493. Growing crops on contour. (Reported under question 170, p. 13.).....	x x x x	x x x x	493
494. Pasture and range improvement by contouring.....	6	120	acres. 494
495. Grassing waterways.....			acres. 495
496. Depth of moisture tests.....			acres. 496
497. Floodwater control for crop production.....			acres. 497
498. Farms in:			
(1) Legal soil-conservation districts.....			acres. 498
(2) Voluntary soil-conservation associations.....	70	7000	acres. 498
(3) Grazing associations.....			acres. 498
.....			
.....			
.....			
.....			
.....			

WORK IN COOPERATION WITH OTHER FEDERAL AGENCIES*

The purpose of this report on work in cooperation with other Federal agencies is to bring together in one place all the work done in relation to the programs of these agencies regardless of duplication. Include all related work reported under regular project headings on preceding pages, and in addition all other assistance rendered such agencies.

ITEM	AGRICULTURAL ADJUSTMENT ADMINISTRATION			Soil Con- servation Service	Farm Security & Insur- ance	
	Agricul- tural conser- vation program	Market agreement and order program	Surplus purchase and diversion program			
	(a)	(b)	(c)			
498. Days devoted to line of work by:						
(1) Home demonstration agents.....					2	} 499
(2) 4-H Club agents.....						
(3) Agricultural agents.....	89½			1	10½	
(4) Specialists.....						
500. Number of communities in which work was conducted.....						500
501. Number of voluntary local leaders or committeemen assisting.....						501
502. Days of assistance rendered by such leaders or committeemen.....						502
503. Number of paid local leaders or committeemen assisting.....						503
504. Days of assistance rendered by paid local leaders.....						504
505. Number of meetings held.....						505
506. Number of news stories published.....						506
507. Number of different circular letters issued.....						507
508. Number of farm or home visits made.....					5	508
509. Number of office calls received.....					18	509
510. Number of farms or homes directly assisted by extension agents to carry out the program of the agency.....					12	510
.....						
.....						
.....						
.....						
.....						

*Farm Credit Administration not included, since provision is made for reporting work on farm and home financing in col. (6), p. 18.

16-5028

