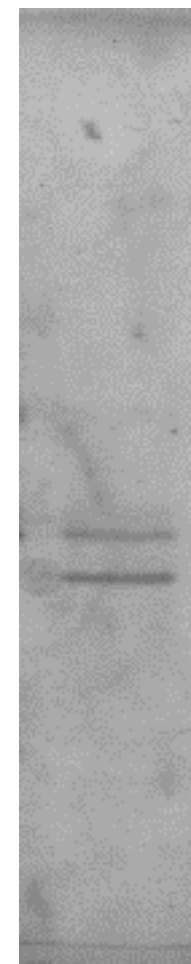


SDS PAGE



▲ 30 kDa
▲ 28 kDa

Figure 12. DNA affinity chromatography of TF2.

Active DEAE fractions in which the TF2 band could be seen in EMSA (Fig. 11), were pooled, concentrated and then subjected to 5'C-DNA affinity chromatography. Bound proteins were eluted using a linear salt gradient from 0 to 0.3 M NaCl over 2 hours. Fractions thus obtained were analyzed by EMSA using a labeled 5'C probe (the box shown below the elution profile). Binding activity is shown by the thick line. The dotted line is the elution of total protein. TF2 can be seen migrating at 0.39 R_f in the EMSA gel. The active fractions were also analyzed by SDS-PAGE (the box to the right of the elution profile, the gel was stained with Coomassie dye). TF2 corresponds to an apparent molecular weight of 28 kDa. The 30 kDa band seen in the SDS-PAGE gel is *Dicyostelium* Discoidin-2 that elutes with TF2 in earlier affinity fractions.