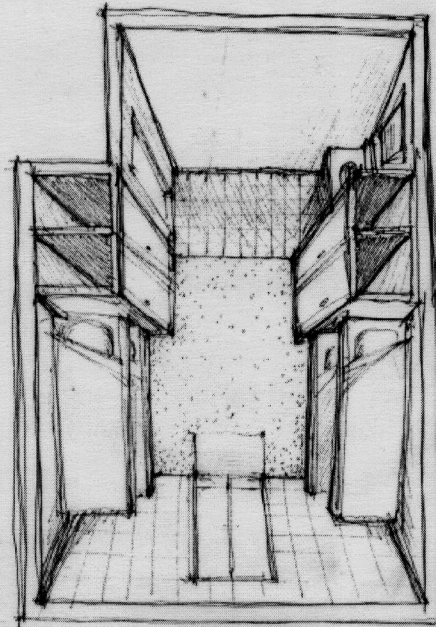
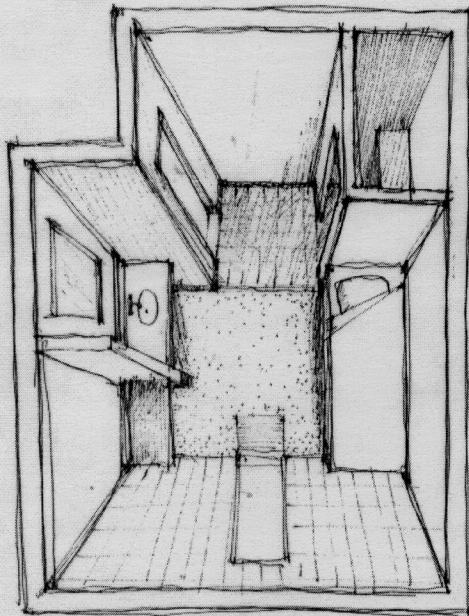


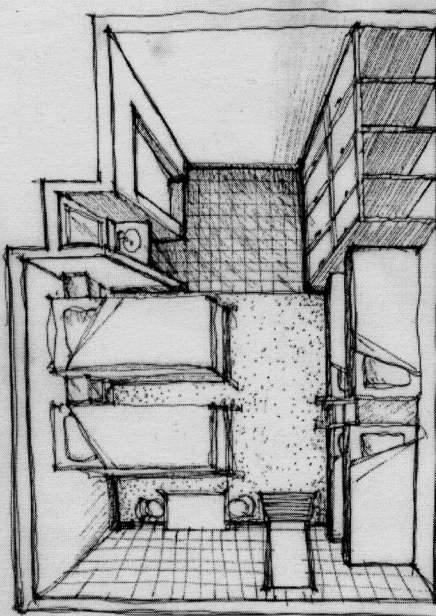
a



b



c



d

TYPICAL GUEST ROOMS

The guest rooms are intimate spaces designed to accommodate from one to eight travelers. The exterior wall is translucent glass block to maximize light without compromising privacy. Each room is equipped with a sink and mirror, storage space, and bunk beds. The entry from the interior is finished in tile; the rest of the room is carpeted. Some rooms also include a small table and chair or a bench. Every room offers access to the exterior balconies, each of which is shared by the other guest rooms along the same side of the building, either the East or West.

typical guest rooms

- a* 2-bed
- b* 4-bed
- c* 1-bed
- d* 8-bed

guest