

Figure 5: Locations in which soil cores were taken. Location marked as (x, y) coordinates for the simulated agricultural field. Coordinates are in meters from the origin.

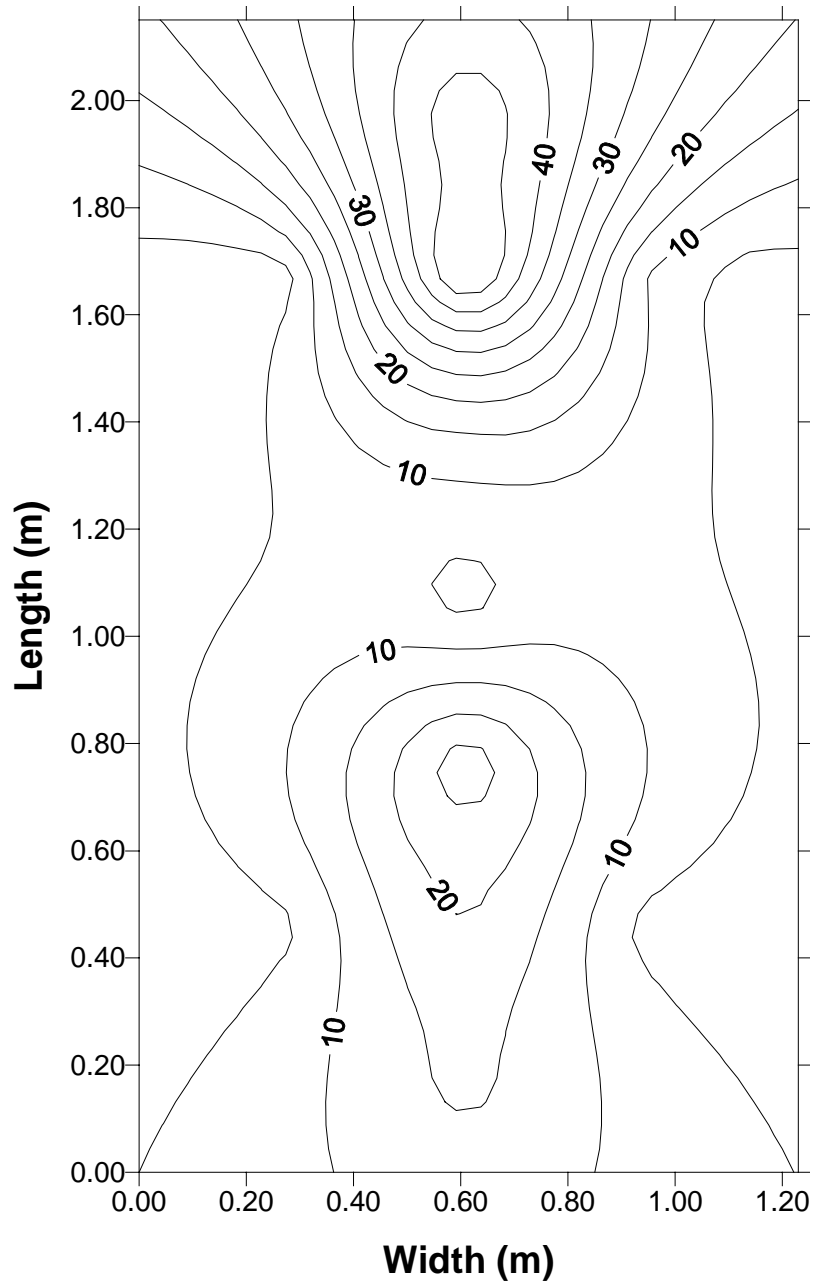


Figure 6: Copper distribution in top 2.5 cm of soil. Plan-view of the simulated plasticulture field. Copper content expressed as mg copper/kg soil.

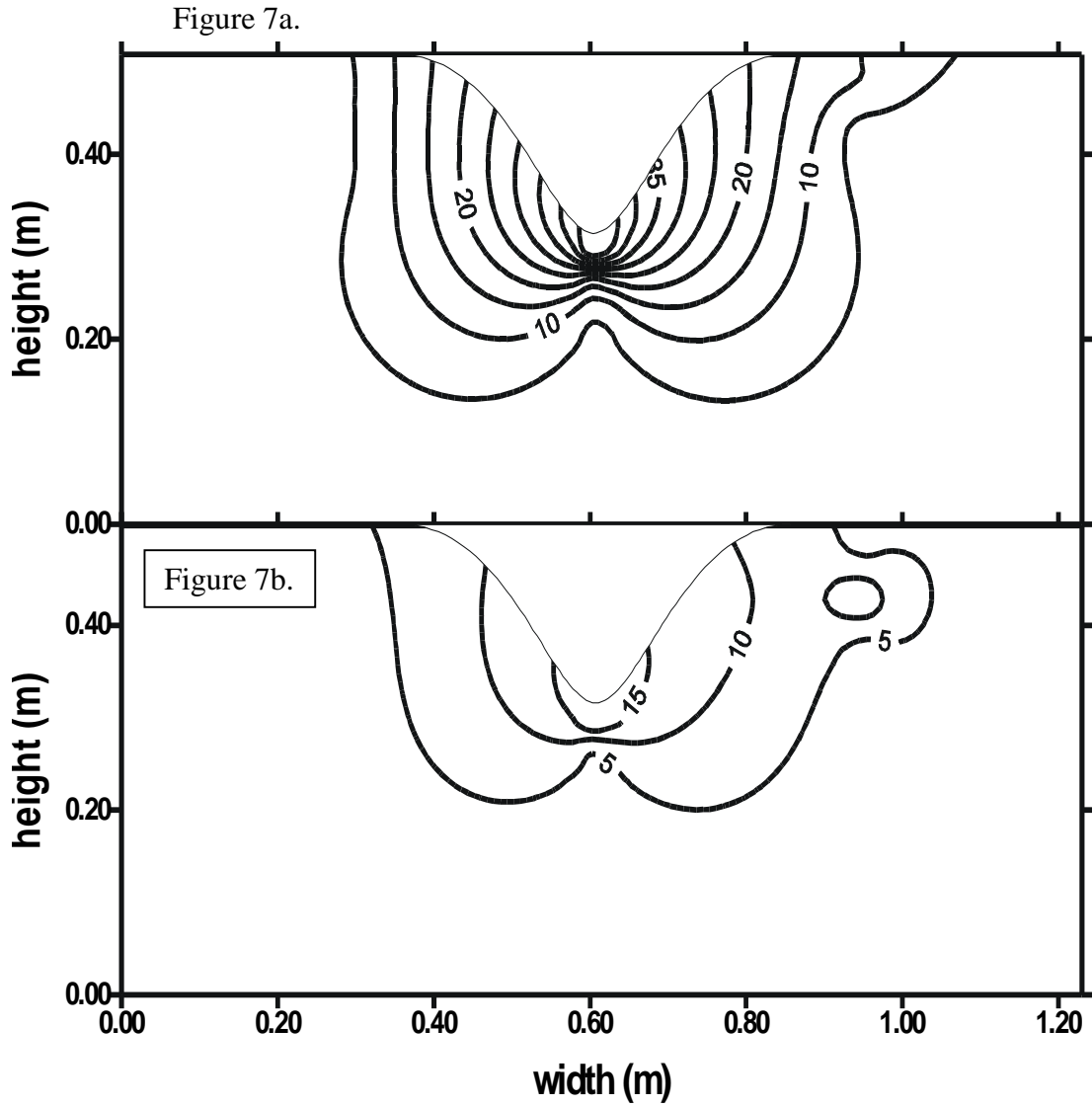


Figure 7a: (Top figure) Copper (mg Cu/kg soil) contours for samples taken across the width of the simulated plasticulture tomato field at 1.7 meters from the lower end where the runoff and groundwater drained.

Figure 7b: (Bottom figure) Copper (mg Cu/kg soil) contours for samples taken across the width of the simulated plasticulture tomato field at 0.5 meters from the lower end where runoff and groundwater drained.