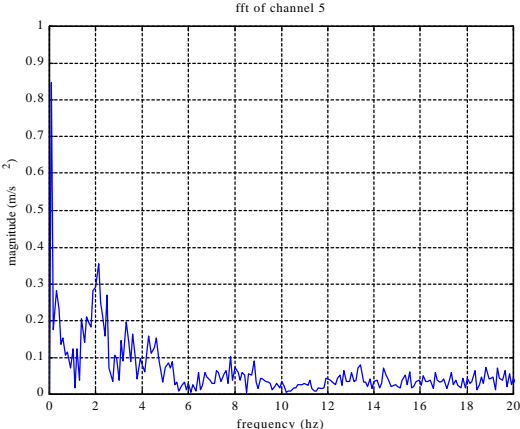
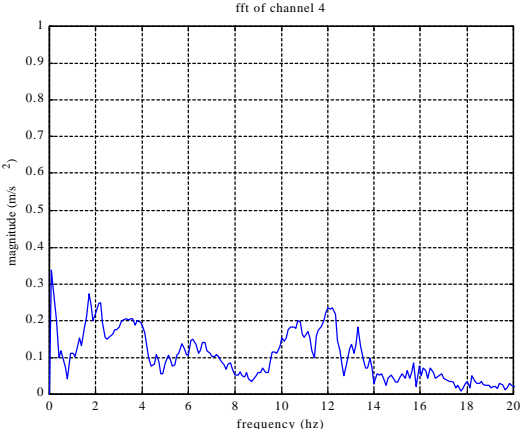
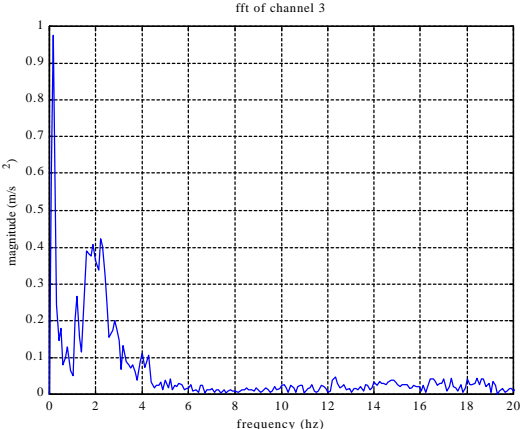
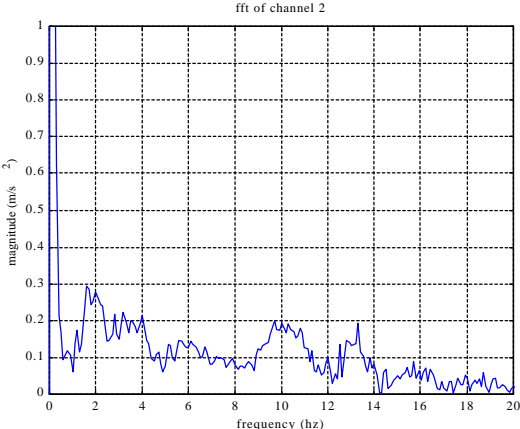
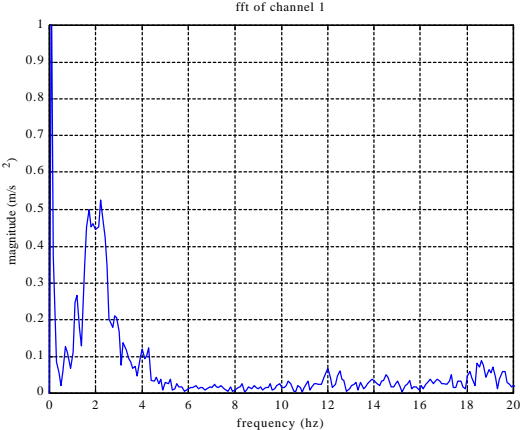


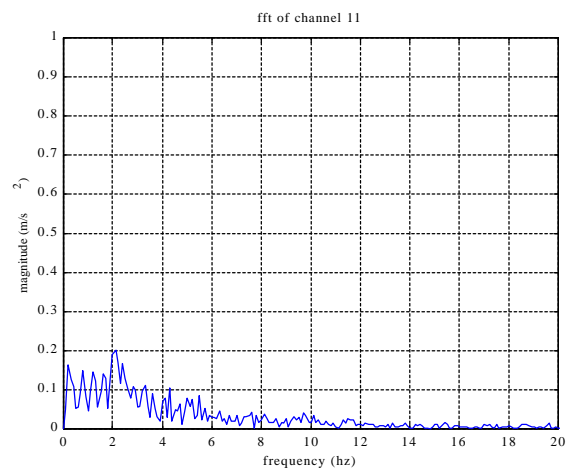
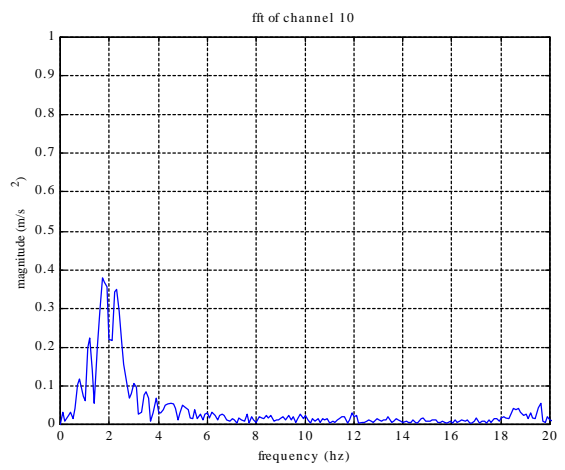
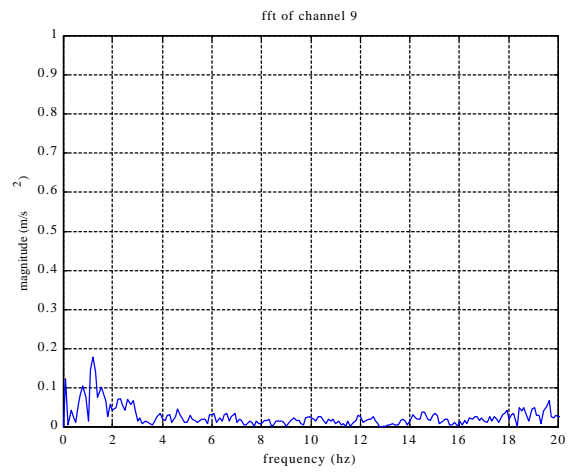
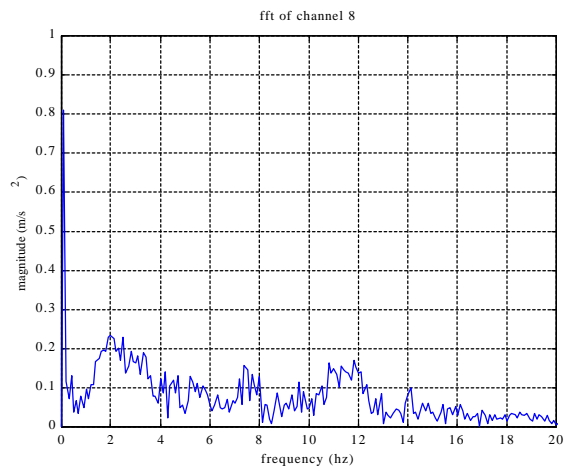
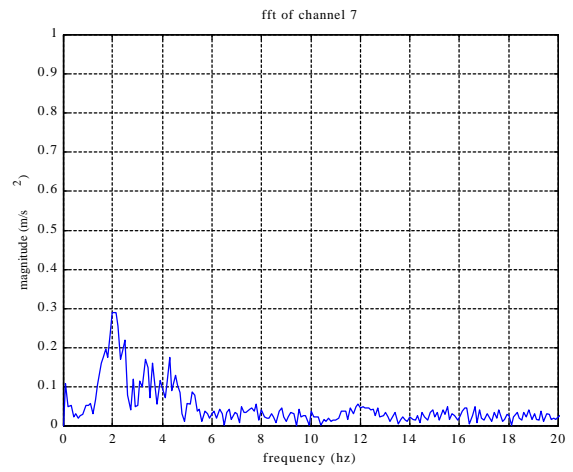
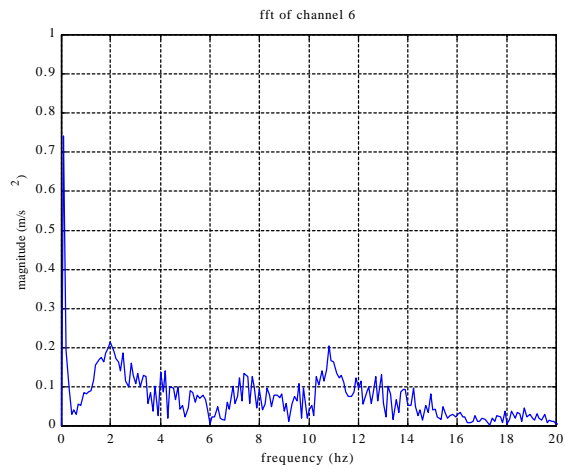
# Appendix 3

## FFT of Acceleration Data Sample Sets for Transient Tests

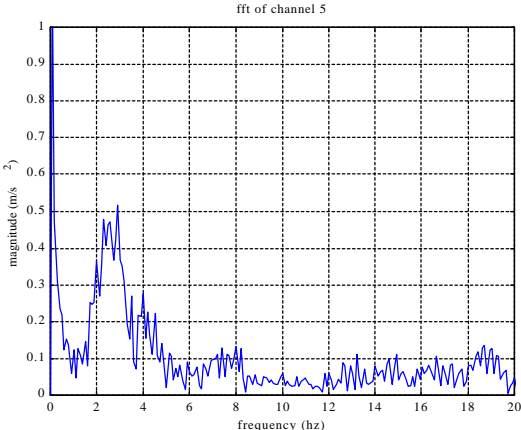
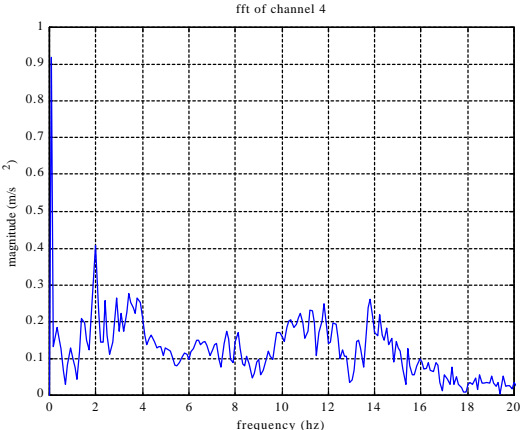
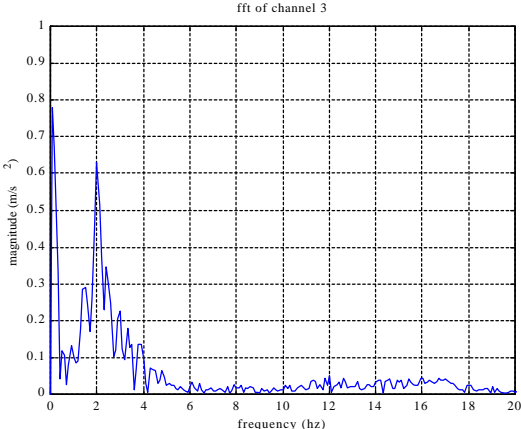
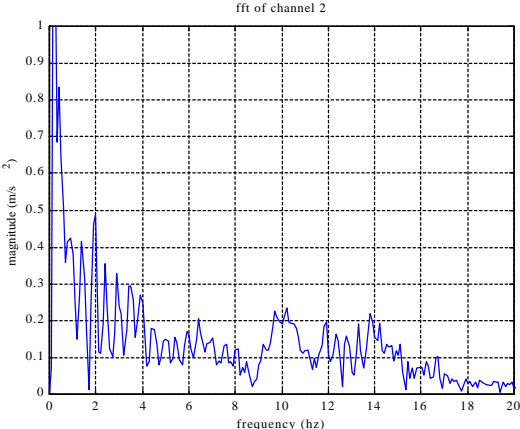
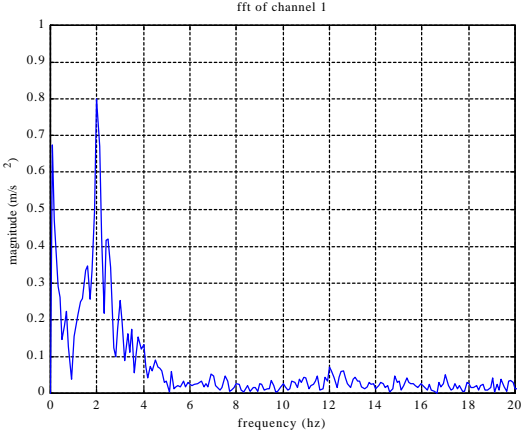
- 3a: MR Dampers w/Skyhook Control
- 3b: MR Dampers Continuously On
- 3c: MR Dampers Continuously Off
- 3d: Original Dampers

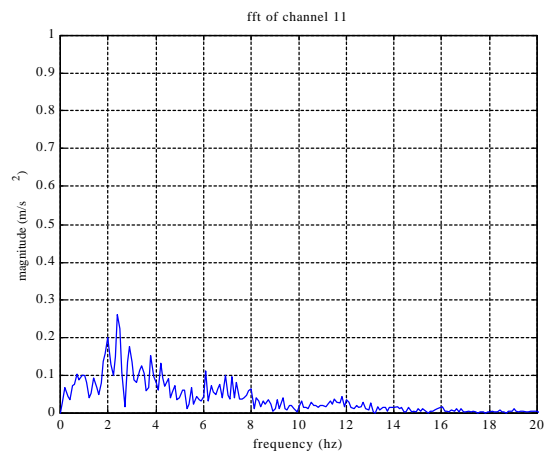
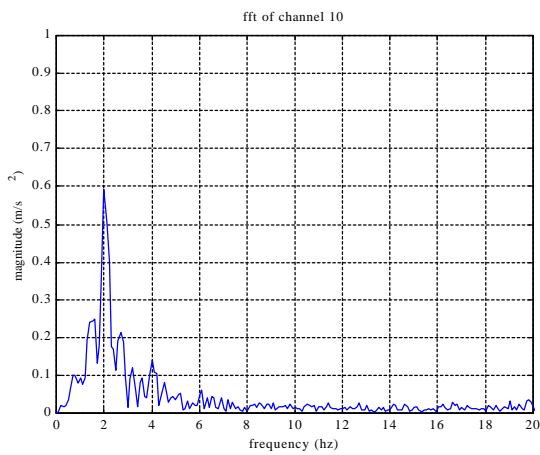
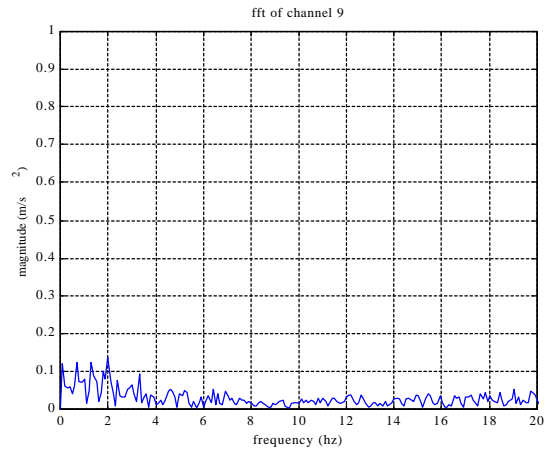
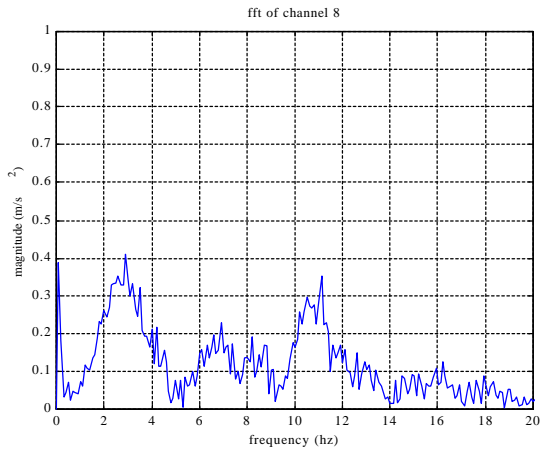
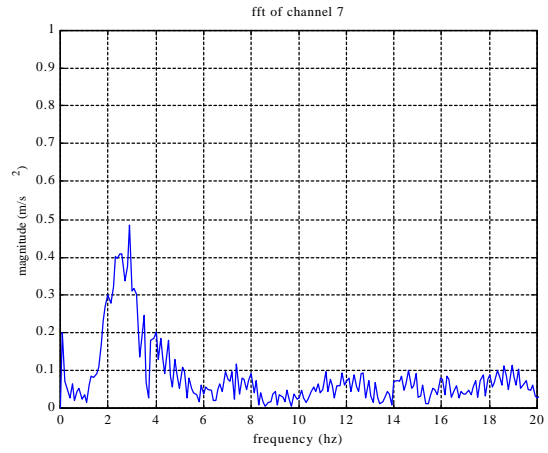
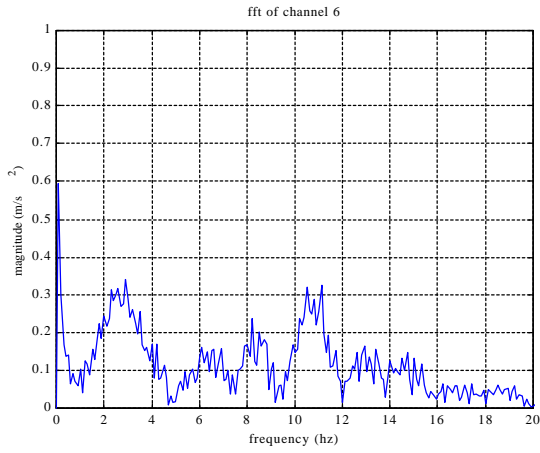
# Appendix 3a: FFT of Acceleration Data Sample Set for Test Vehicle with MR Dampers and Skyhook Control Policy -Transient Case



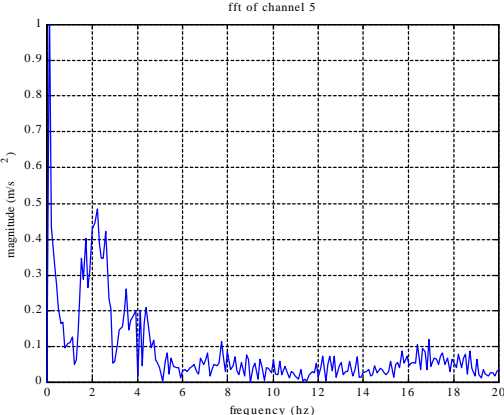
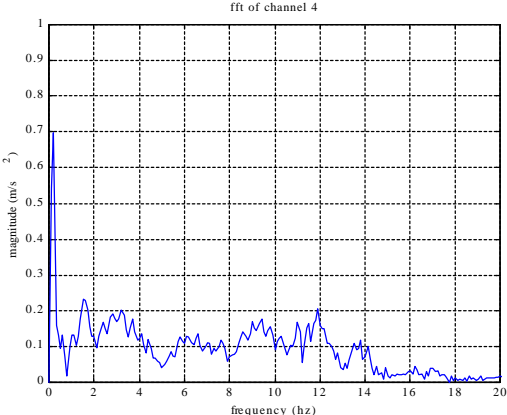
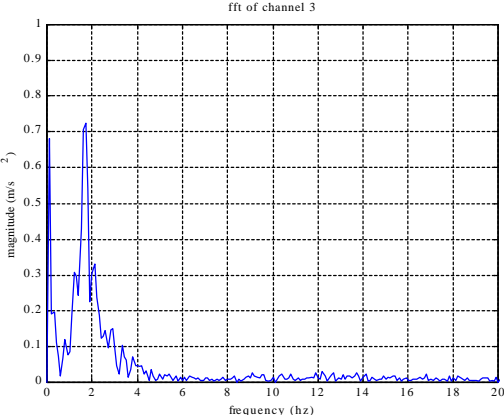
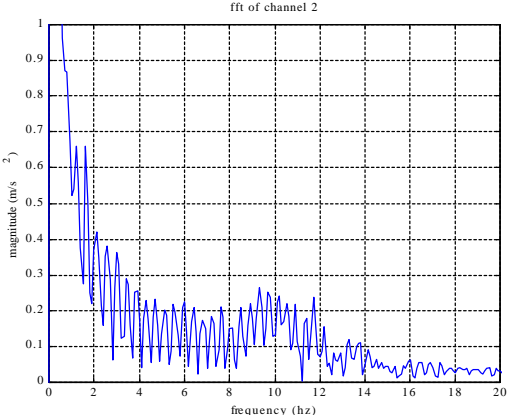
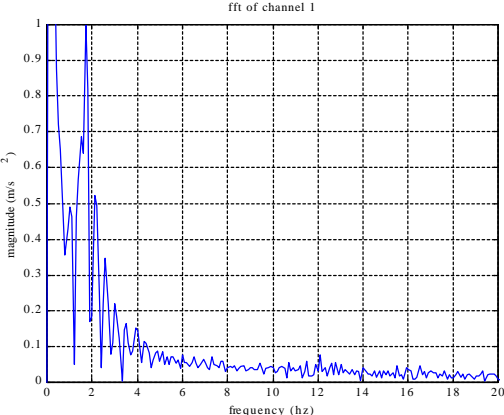


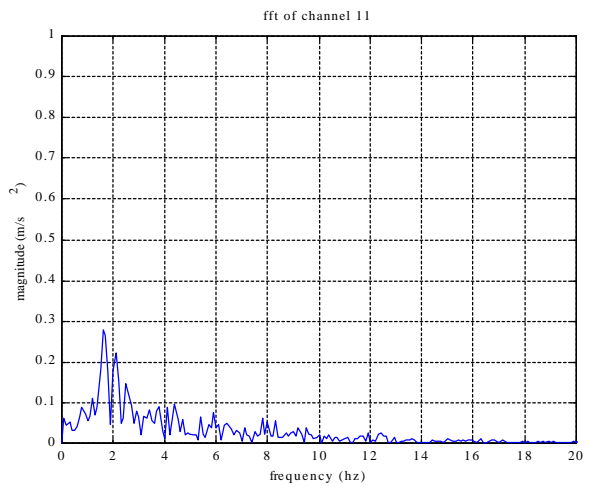
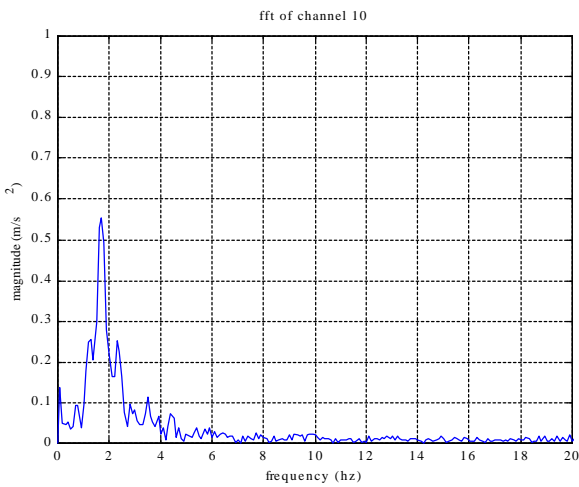
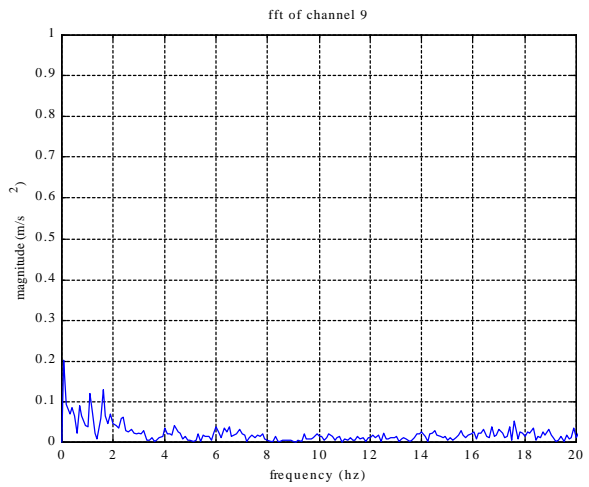
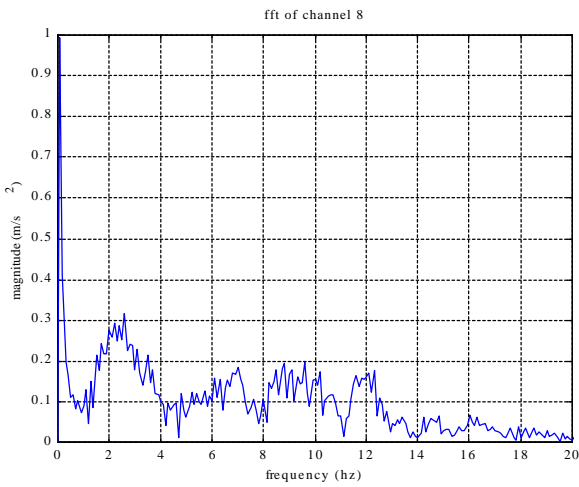
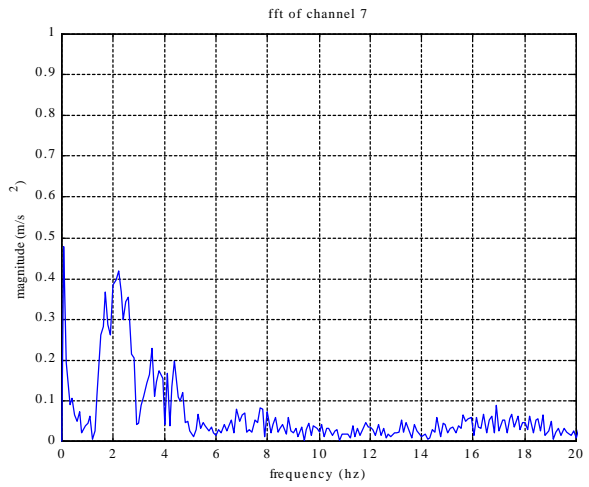
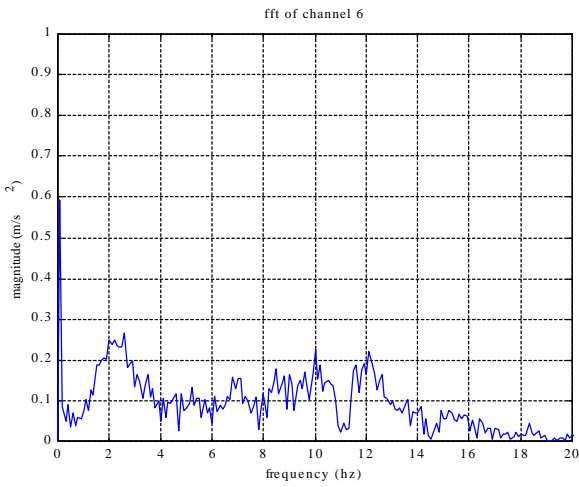
# Appendix 3b: FFT of Acceleration Data Sample Set for Test Vehicle with MR Dampers Continuously On - Transient Case





# Appendix 3c: FFT of Acceleration Data Sample Set for Test Vehicle with MR Dampers Continuously Off - Transient Case





# Appendix 3d: FFT of Acceleration Data Sample Set for Test Vehicle with Original Dampers -Transient Case

