

# Possible Spotted Lanternfly Immature Look-alikes in Virginia

Theresa Dellinger and Eric Day, Department of Entomology, Virginia Tech

Immature spotted lanternfly, *Lycorma delicatula* (White), are black with white spots when young. They turn red and black with white spots when older. A few other insects in Virginia have similar color patterns, but a close look will show that immature spotted lanternflies are easily recognizable. Sizes not to scale.



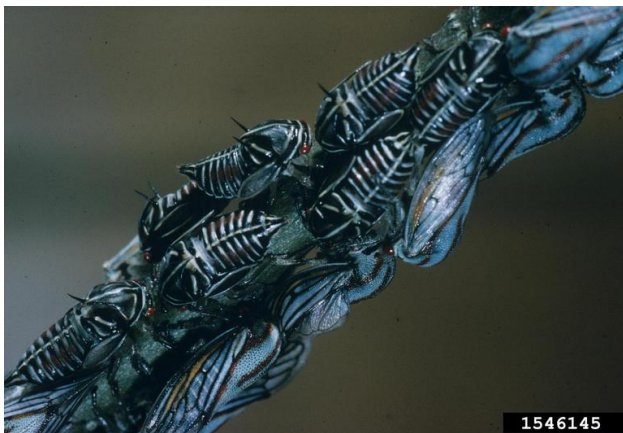
Young spotted lanternfly nymph  
*Berks Co. Conservation Dist.*



Older spotted lanternfly nymphs  
*Eric Day, Virginia Tech*



Wheel bug nymph  
*Susan Ellis, Bugwood.org*



Oak treehopper nymphs  
*Southern Forest Insect Work Conf.,  
Bugwood.org*



Assassin bug nymph  
*Susan Ellis, Bugwood.org*