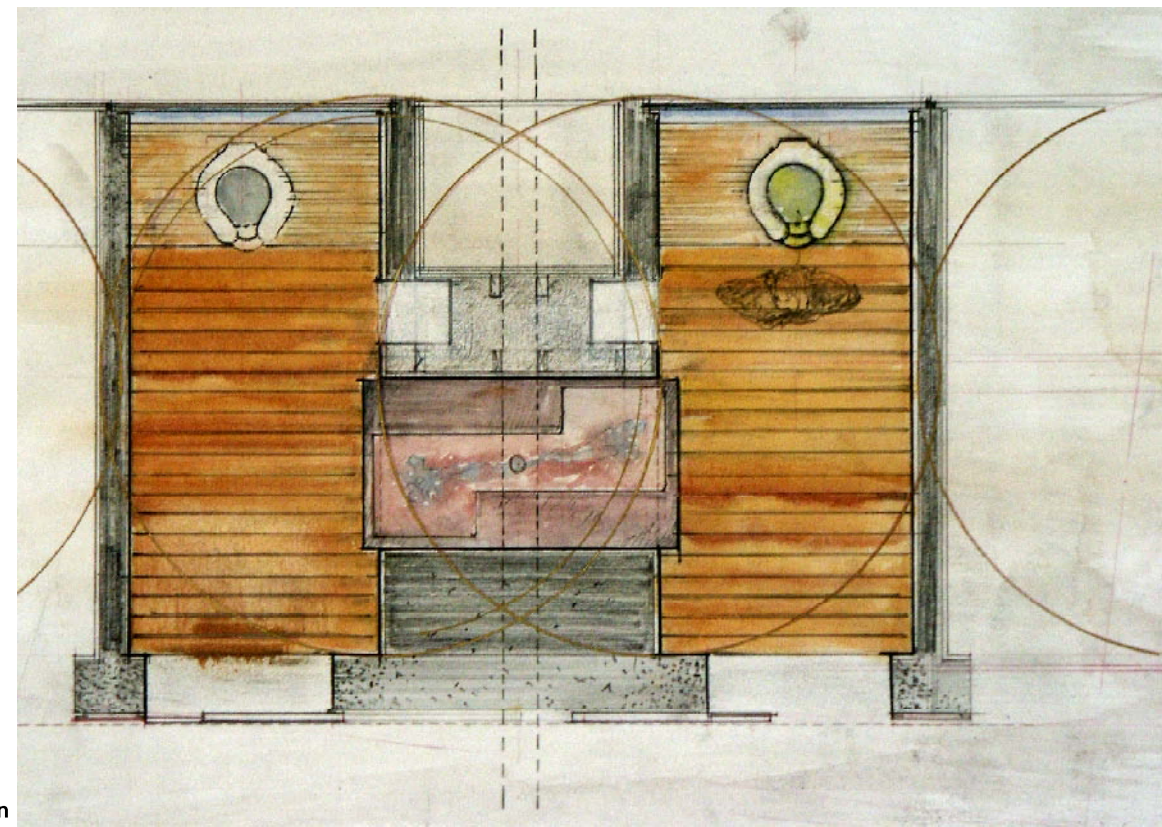
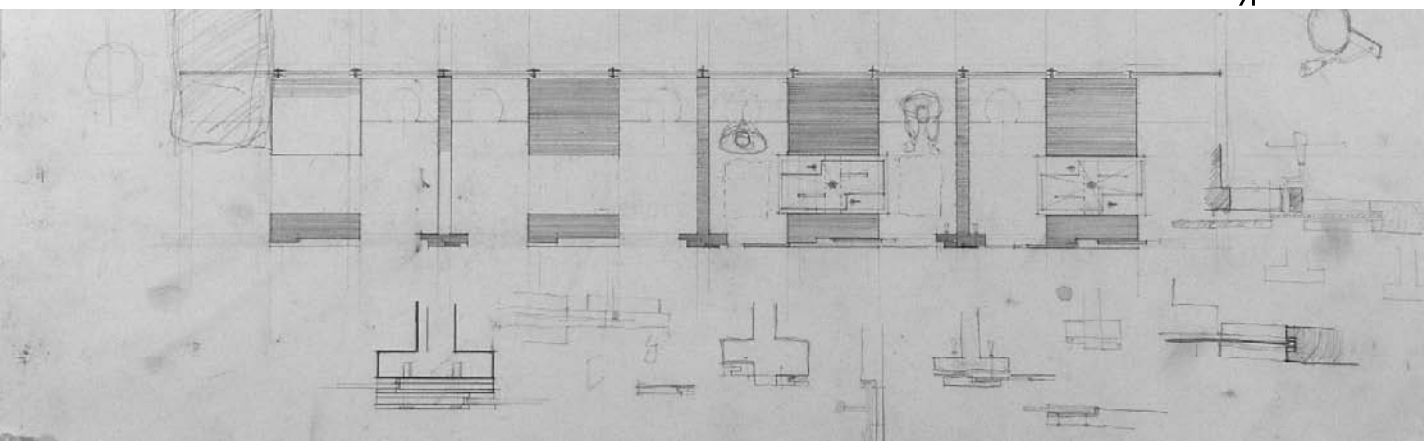
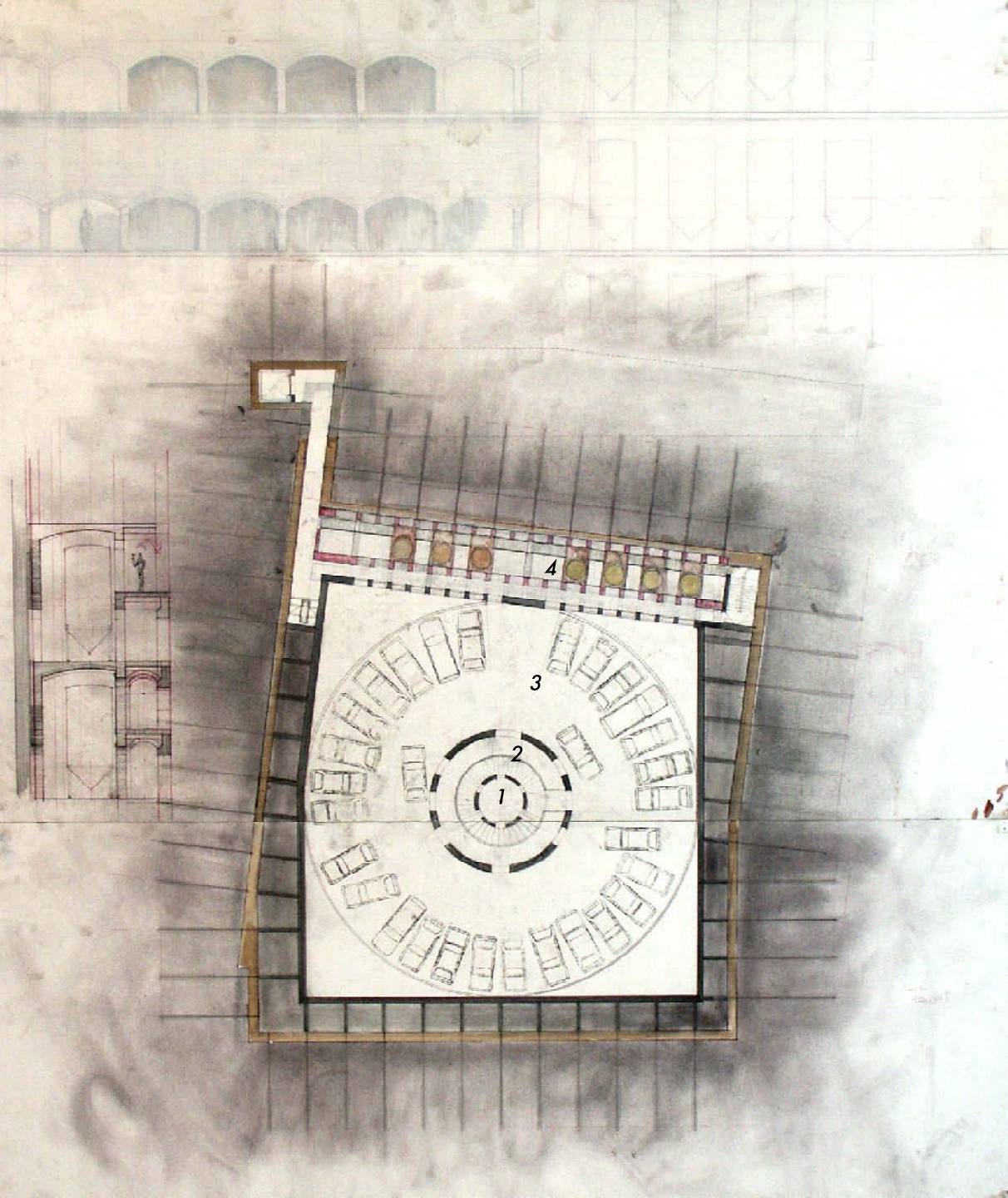


Section through Main Entry
Ramp and Typical Restroom

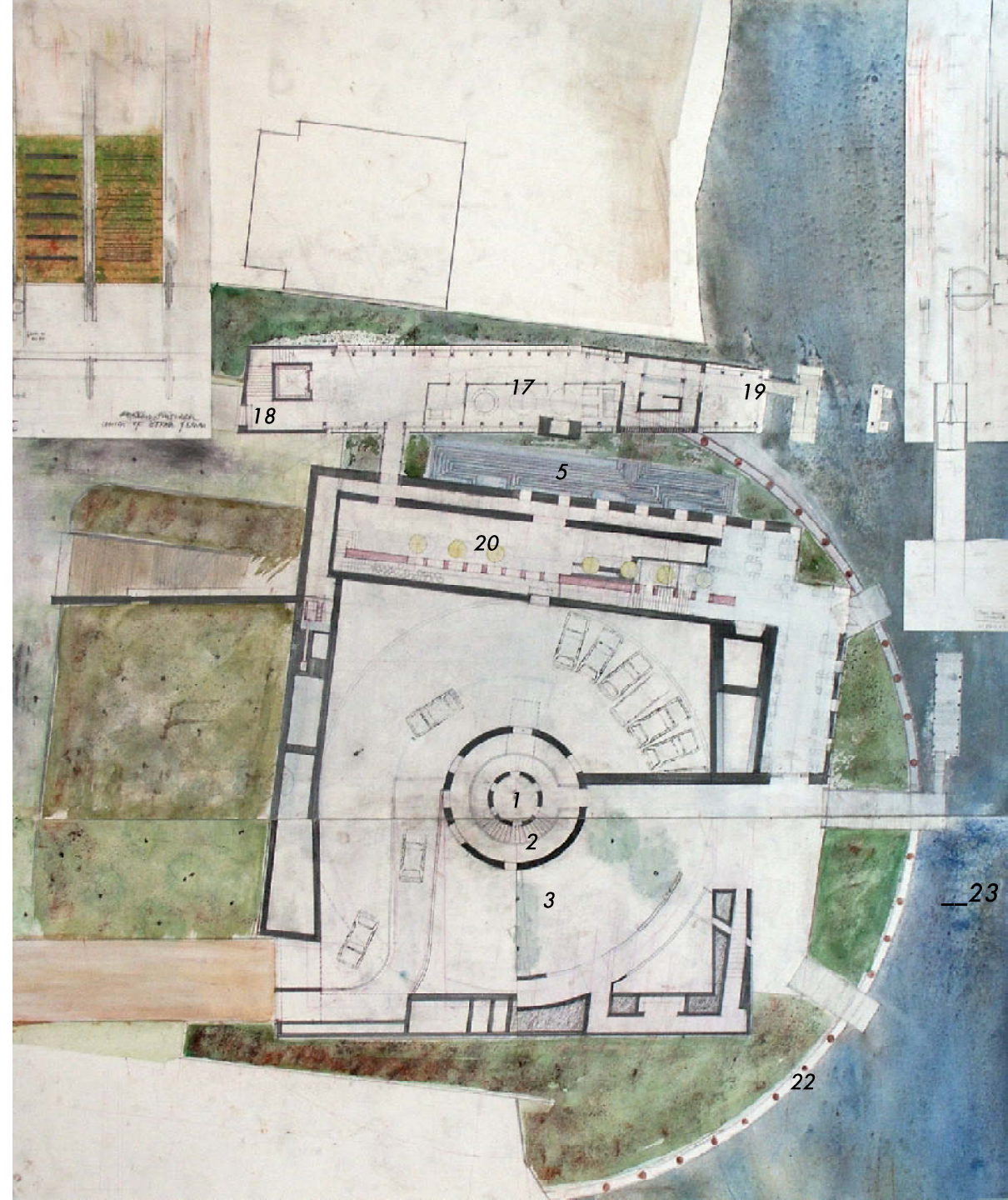


Typical Paired Restroom Plan





Typical Subterranean Plan



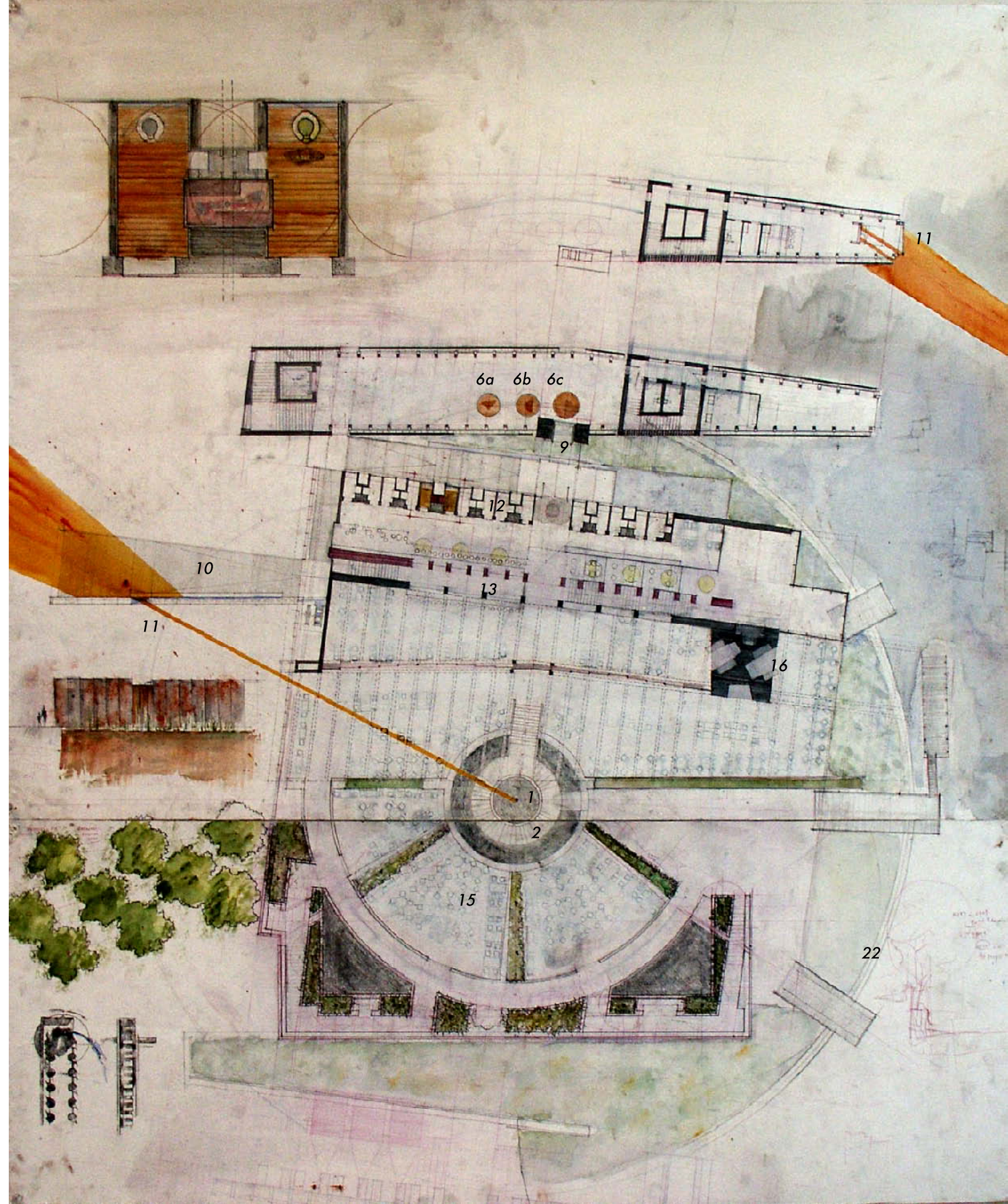
Ground Level Floor Plan

Drawing Key

- | | | |
|--------------------------------|----------------------------|--------------------------|
| 1. Light Shaft / Water Well | 7. Fireplace | 15. Terraced Seating |
| 2. Spiral Stair | 8. Tavern | 16. Inglenooks |
| 3. Double-Helix Parking Deck | 9. Fire | 17. Mechanical Room |
| 4. Fermentation Room / Tanks | 10. Entrance Ramp | 18. Loading Dock (Road) |
| 5. Labyrinthian Heat Exchanger | 11. Summer Solstice Marker | 19. Loading Dock (River) |
| 6. Brewing Floor | 12. Public Restrooms | 20. Kitchen |
| a. Mash Tun | 13. Bar | 21. Tavern Deck |
| b. Lauter Tun | 14. Hops Trellis | 22. Concrete Caisson |



Terrace Level Floor Plan





—Notes 11 April 2003

Brick - no longer used in bearing

-cost – new systems faster and lighter and open [Calvino, Six Memos: Lightness, Quickness...]

-Should be used clearer, as an indigenous material and classically associated with breweries

-Expressive of change in beer over time, refined and lighter

Weathering imparted onto brick wall is significant.

North facing, this wall will begin to acquire moss and water that will

not undermine the integrity of a typical masonry wall – rainscreen – filter.

Masonry is utilized in a inverted relation to its capacity.

Will it continue to impart thermal properties which are still desired?

Non-bearing brick is free to be stacked in any configuration you please. Must only support its own weight and be held

in such a way as to not fall over. Rainscreen –

lightscreen- filter subtle shifts in coursing expression of method transformative character.

extrude brick to 24" and thread over vertical rods for lateral support

– drystack

Materials Palette

+ Expressed steel (fire)

+ Stone (earth) [fire?]

+ Copper [fire]

+ Brick (earth)

+ Glass (fire/water)

+ Vines – trellis- panels of wood (earth/air?)

Brewery
Building Section
and
Tavern Level Plan

