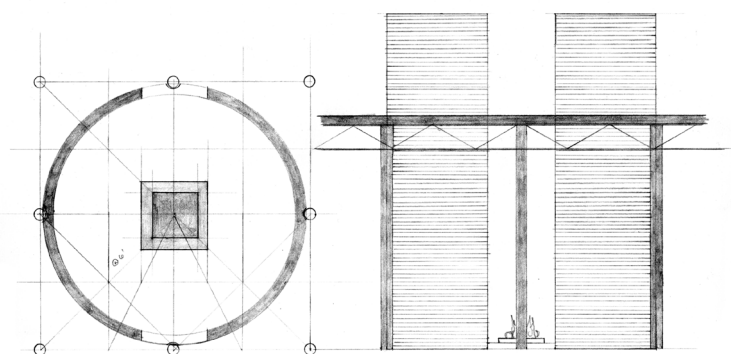
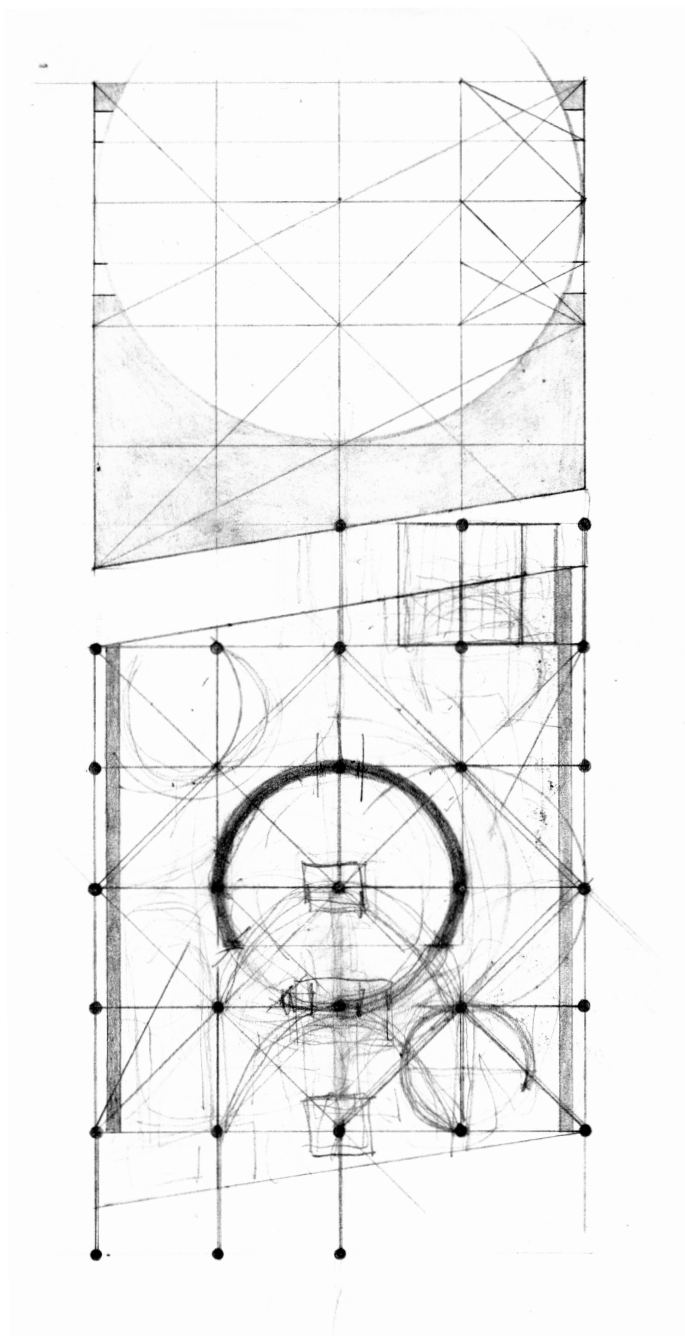
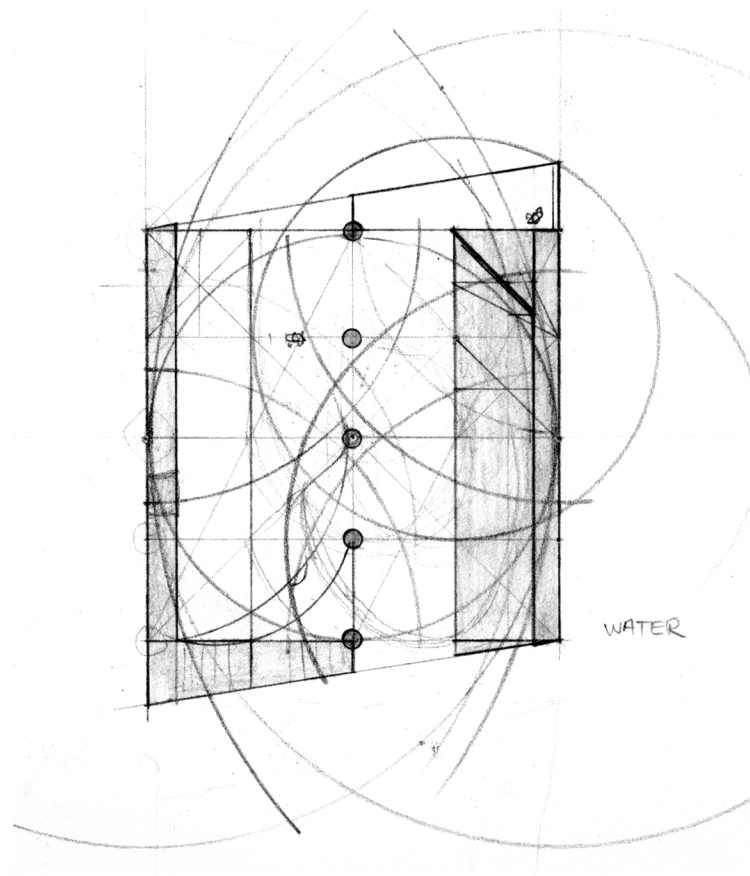


6



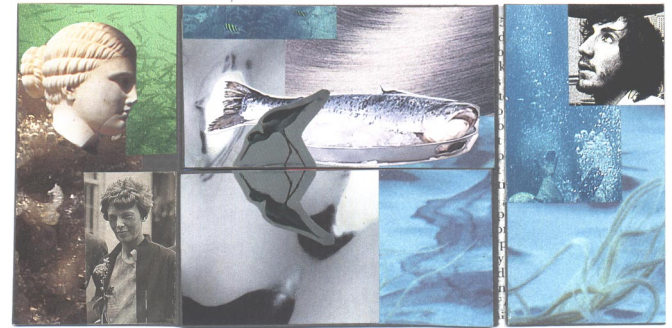
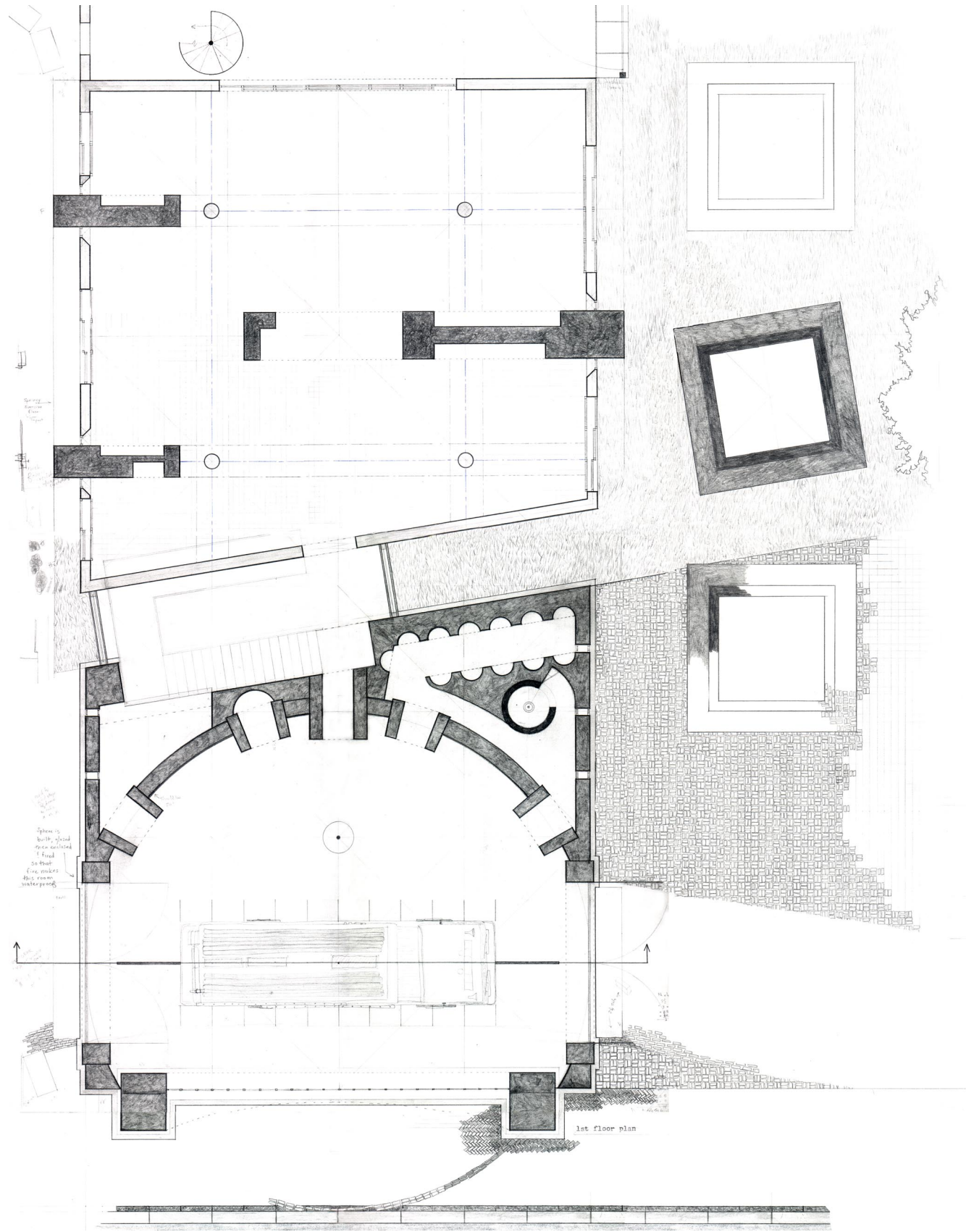
graphite





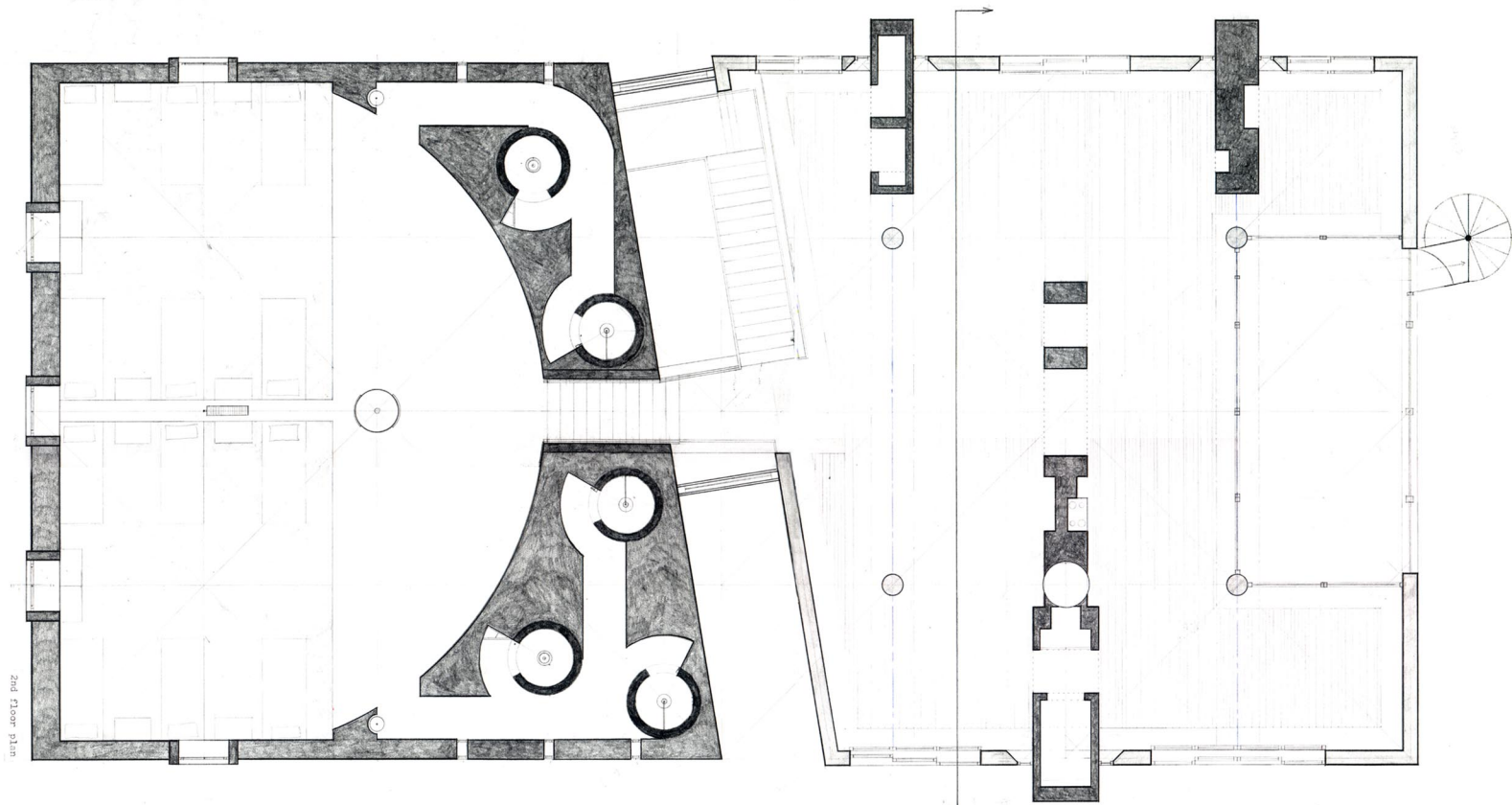
After investigating the exhilarating connections that man has to both fire and water, the challenge of representing these connections developed. Two buildings emerged from the fire station, a building of fire; where the engine is kept and the fire fighters sleep, and a building of water; where boats are stored and the fire fighters live. The fire building immediately developed, the water building struggled in its shadow. The fire building contains a half sphere that serves as a kiln during construction. This cooking of the fire building allows for a waterproof glaze to line the sphere and protect the building when the engine company is washed indoors. Above is a drawing of the water building in its attempt to develop its own personality. Eventually, the water building embraced the fertile characteristics of water.

8



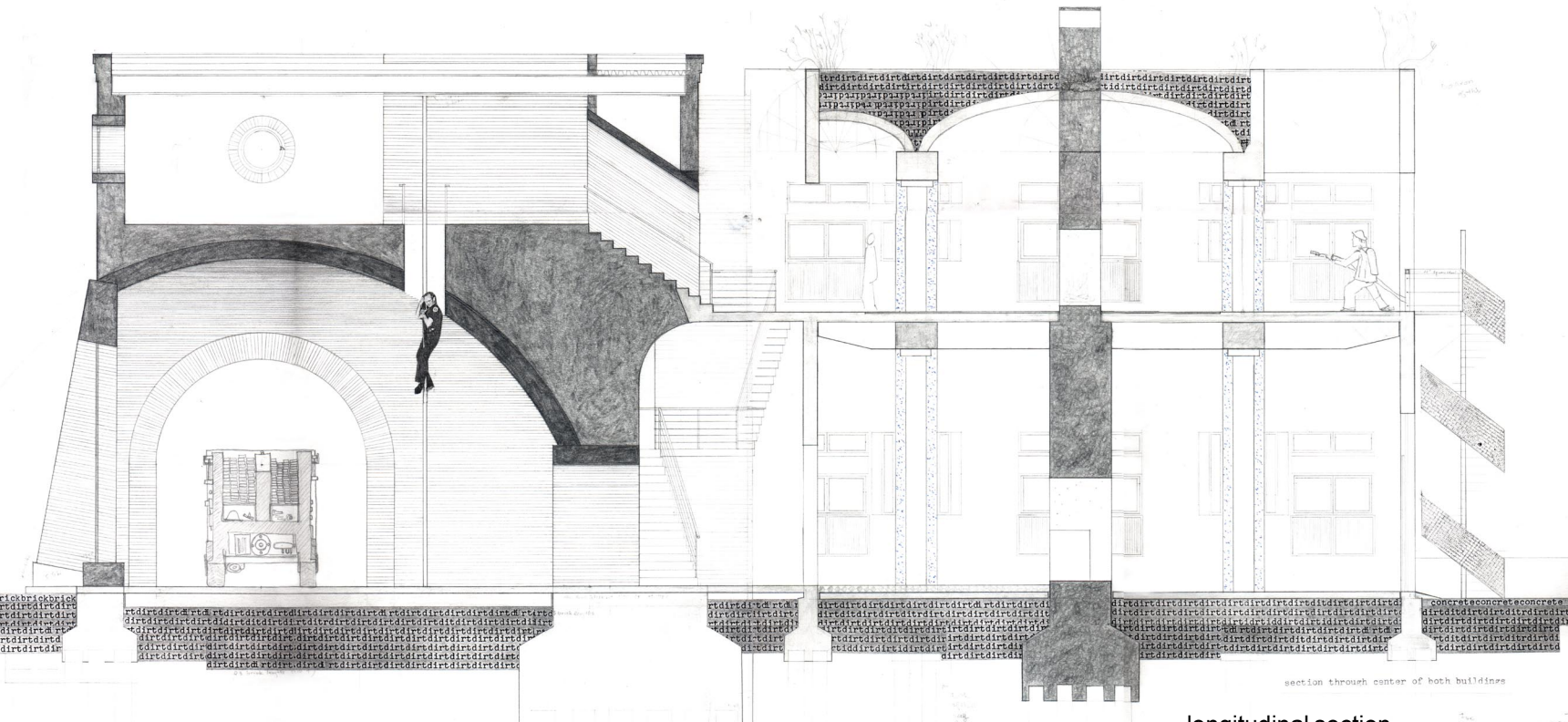
12'

plan of first floor



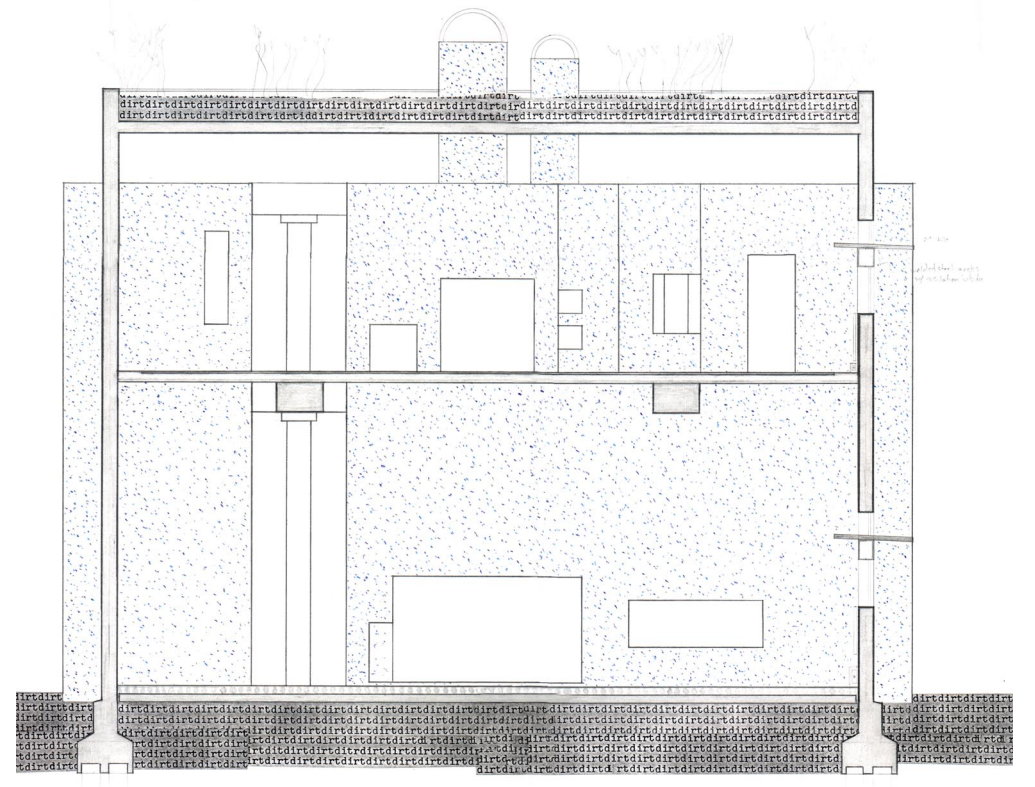
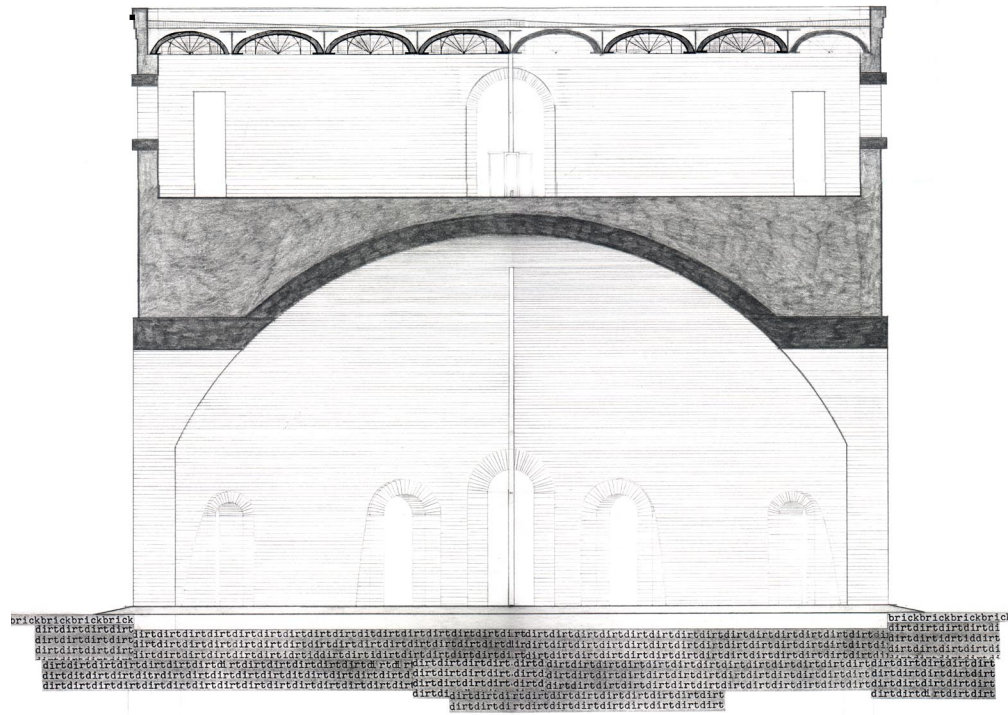
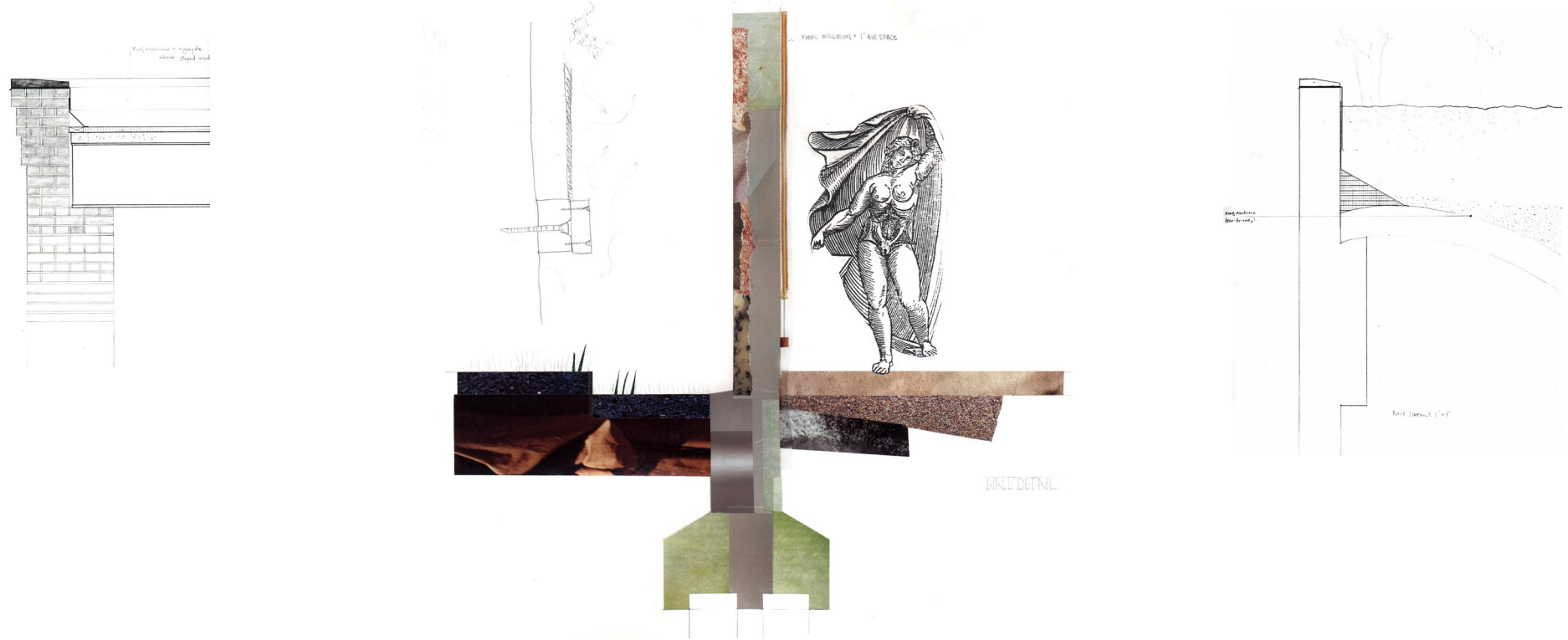
2nd floor plan

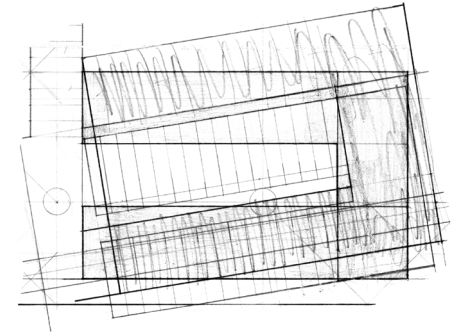
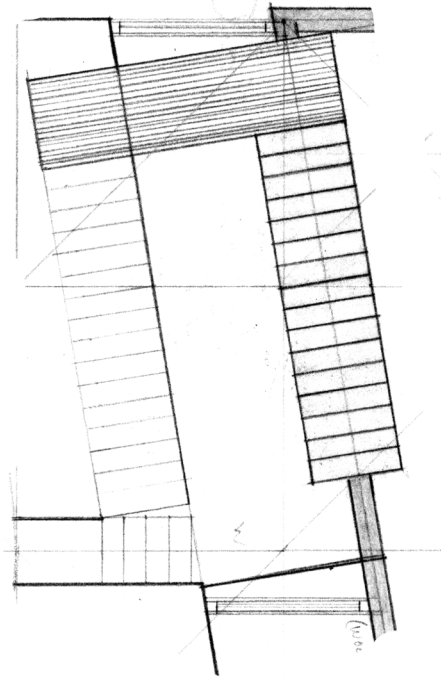
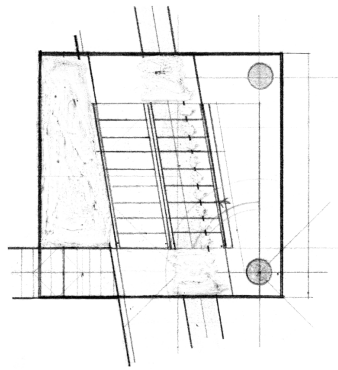
plan of second floor



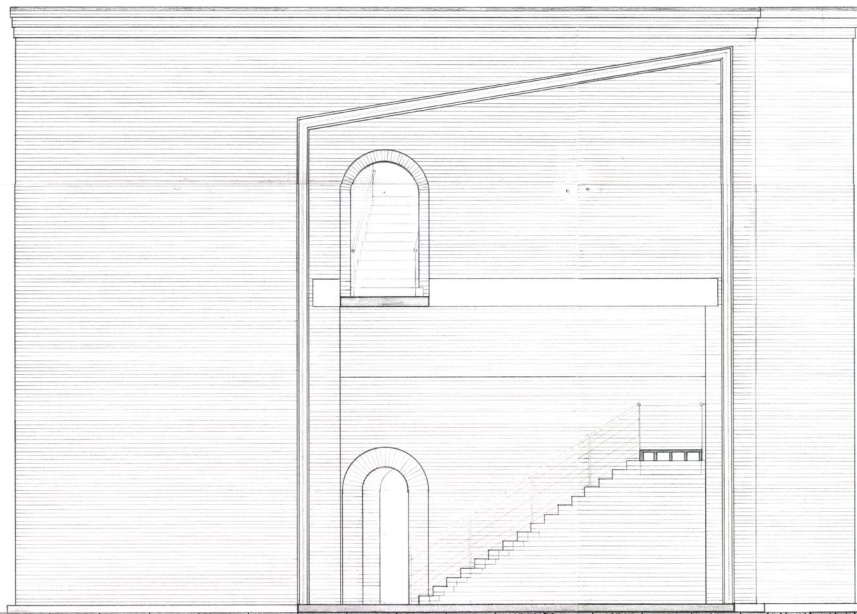
section through center of both buildings

longitudinal section

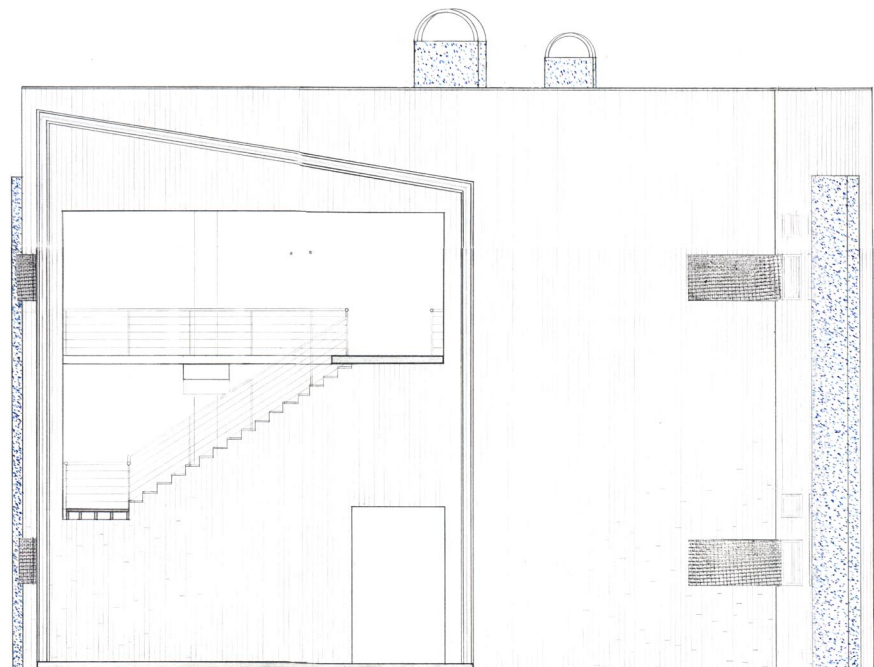




The fire and water buildings are joined by a cypress room that holds the stairs. The stairs consist of two series of risers, one of fire and one of water. The stairs of the fire building are of solid brick and are tucked within the walls of the building. The stairs of the water building are of steel and float upon the water building's thin walls.

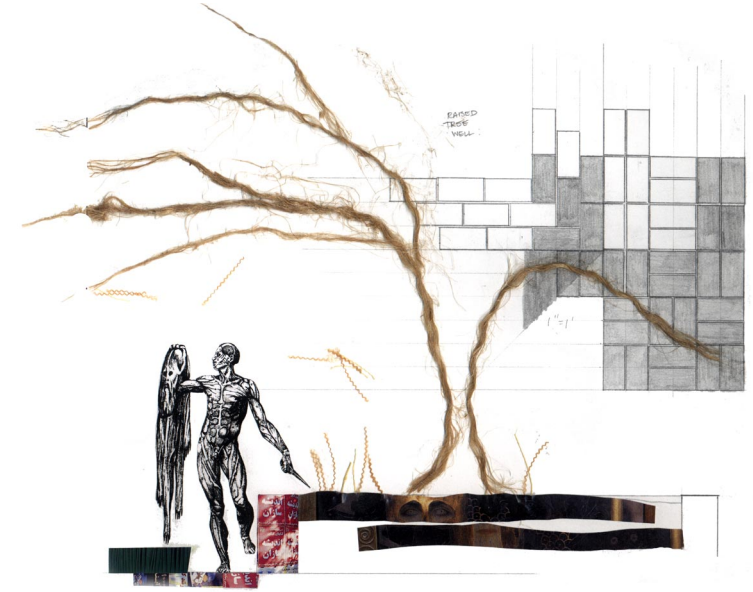
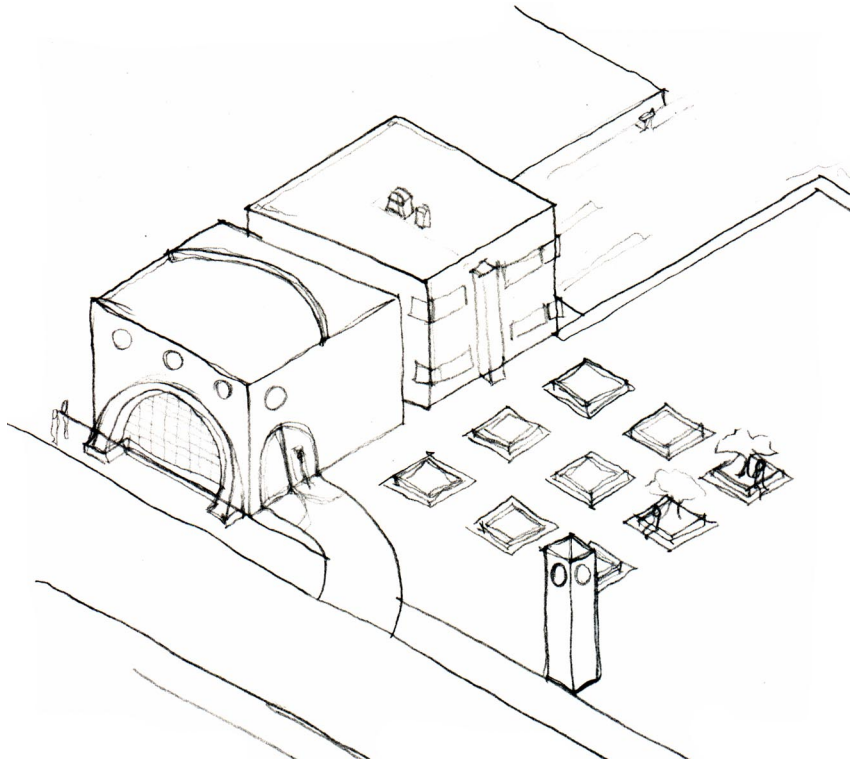


section between buildings (fire elevation)

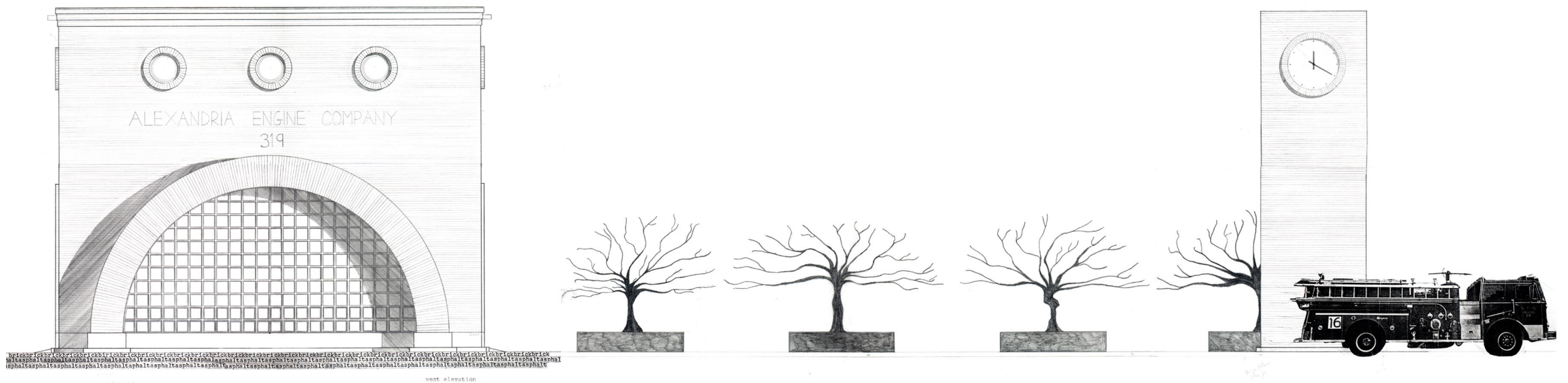


section between buildings (water elevation)

12



To the right of the front elevation there is a grid of trees in planters. The placement of the trees allow for the continuance of the lines and grids that define the building. Growing out instead of up, these trees create a shaded world that contrasts the more open areas of the park.

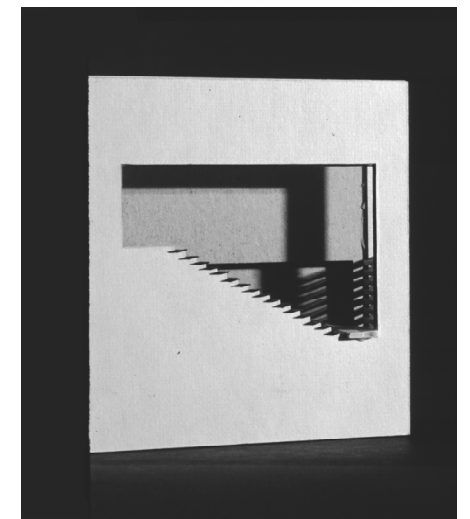
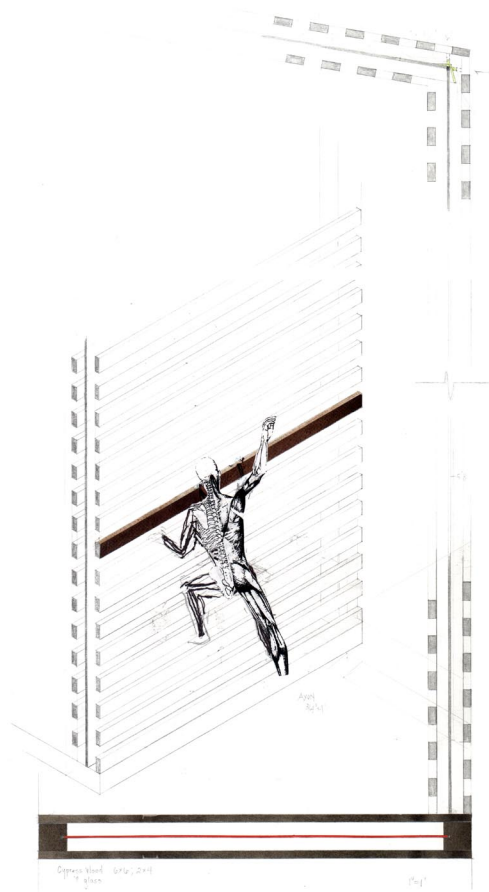


12'

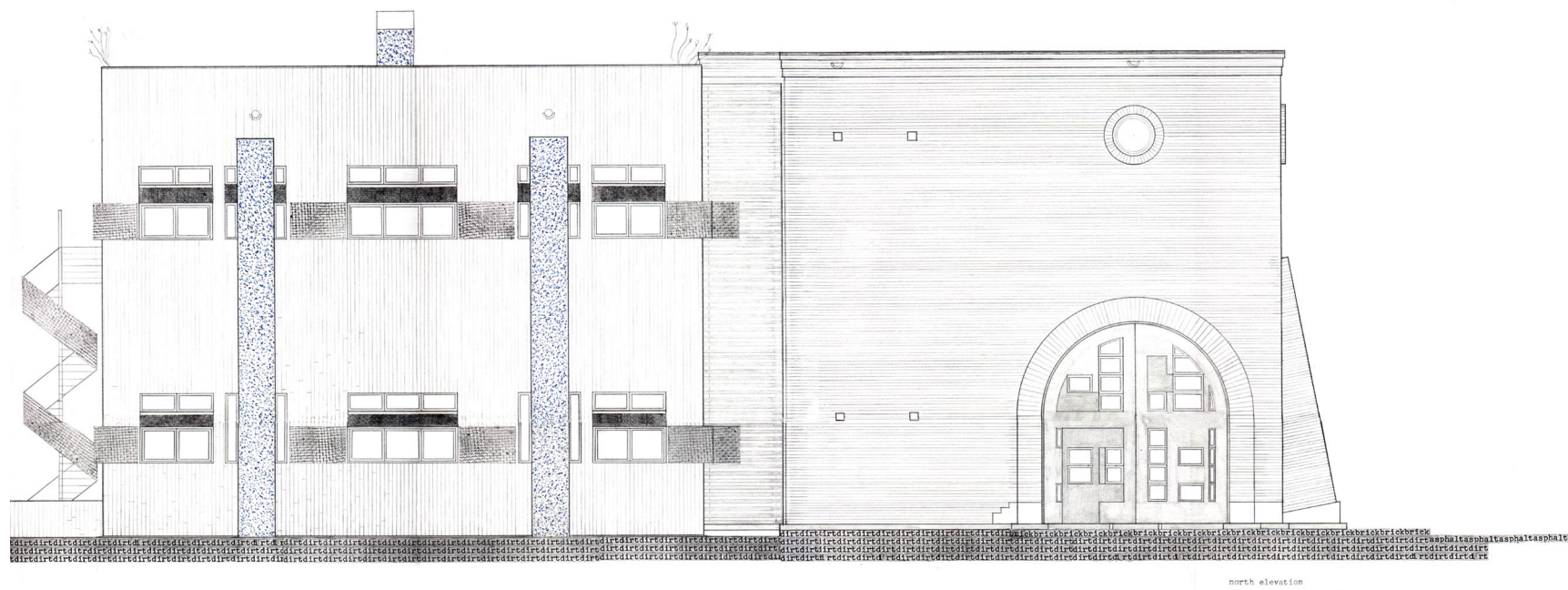
west elevation







Between the fire and water buildings, there is a room of both fire and water that holds the stairs. Made from cypress wood and glass, this structure is its own scaffolding when built and serviced. The effects of the elements on the cypress are observable by comparing the adjacent exterior and interior cypress.



north elevation

north elevation