

VIRGINIA

ROCKBRIDGE COUNTY CO. AGT. ANNUAL REPORT 1929

Index	Page
6 a 2.21      Advisory council .....	2-3
16 a 3        Line .....	7

COUNTY AGENT ANNUAL REPORT

ANNUAL NARRATIVE REPORT

COOPERATIVE EXTENSION WORK in AGRICULTURE

ROCKBRIDGE COUNTY VIRGINIA

1929

H. C. LEWIS COUNTY AGRICULTURAL AGENT

## CONTENTS

Introduction	Page 2
Plan of Work and Achievements	3
Program of Work	3
I. Four-H Club Work	3
II. Agronomy Work	5
III. Farm Management and Farm Accounts	12
IV. Animal Husbandry	12
V. Poultry Husbandry	13
VI. Dairy Husbandry	14
VII. Horticulture	14
VIII. Agricultural Engineering	15
IX. Miscellaneous Work	15
Conclusion	15

ANNUAL NARRATIVE REPORT of AGRICULTURAL EXTENSION  
WORK, ROCKBRIDGE COUNTY VIRGINIA

1929

H.G.Lewis, County Agent

INTRODUCTION

Extension Work in Rockbridge county during the fiscal year ending November 30, 1929 has been in a general way a continuation of the Five Year Program adopted by the County Agricultural Advisory Board in the early spring of 1925. The general tendency during these four years has been gradually to give more time and attention to soil improvement work, this part of the program thus gradually replacing the pure bred sire work to some extent. Therefore the soil improvement program has been the most important feature of the 1929 Extension program in the county. This general change has been made as a result of the advice of the members of the Advisory Board.

The Advisory Board recommended however, that Four-H club work be given first place in the program this year, particularly the development of general interest thruout the county and of live local club organizations.

The number of result demonstrations in both agronomy and animal husbandry work with adult farmers has been increased somewhat during the year.

Another rather outstanding achievement this year was the further development of the county wool pool. The amount of wool handled in the pool was increased from about 26,000 pounds in 1928 to over 30,000 pounds in 1929. The net saving to wool growers was not less than \$2,200 over the usual previous methods of selling.

A more detailed report of each of these achievements as well as others which were less outstanding, is given later in this report under each respective sub heading.

For several years past the County Agricultural Advisory Board has been the only county wide organization of farmers in the county. It is made up of three or four leading and influential farmers from each magisterial district, including each special organization or group which exists in the county, as well as each civic and business organization in the towns. The members of the county Board of Supervisors are ex-officio members.

2

Meetings are held twice or more times a year depending on apparent needs. The group composing this organization along with the District Agent determine the program and activities of the county agent. The members of the Board are consulted on any question arising in connection with the work.

#### PROGRAM OF WORK

The introductory statement in the 1929 Plan of Work adopted by the Advisory Council at the meeting held in January reads as follows: "The following program for Agricultural extension and organization work in Rockbridge county has been prepared by the several committees of the Rockbridge Agricultural Advisory Board and is based on the county Five Year Program for the Improvement of Rockbridge Agriculture. It is of course, useless unless carried out, and the several committees and the county agent need the support of every farmer and every organization in the county to fully carry it out. The several civic organizations, banks and other business institutions will also contribute valuable assistance in carrying it out.

"The general Advisory council agreed that Four-H Club work should receive first attention by the county agent in his activities during 1929, as has been the case the past three years. Next in importance they considered agronomy work, particularly soil improvement, and perhaps of equal importance, farm organizations and farm accounts followed in importance by the pure bred sires campaign and livestock improvement work. The work accomplished along each respective line however, will rest to a considerable extent with the members of the committees."

#### Plan of Work and Achievements

##### I. Four-H Club Work

Goal	Result
1. Prefect 15 local Four-H clubs each with an efficient local leader and with efficient project leaders where enrollment warrants.	Fourteen such local clubs have been established and were continued thru the year, 15 of which have efficient leaders and several with project leaders.
2. Limit membership so far as possible to boys and girls who are genuinely interested	This was done.
3. Develop two demonstration teams in each local club.	This was not entirely accomplished, the in two clubs more than one team each was trained.

4. Hold one county rally and one county short course.

The county rally was held in June and was attended by nearly 500 club members, leaders and visitors. All plans and arrangements were made for holding the county short course but had to be canceled a few days before the time by order of the County Board of Health because of a quarantine to prevent further spread of infantile paralysis.

5. Attendance at State Short Course not less than twenty five club members and five leaders, with at least one member from each local club

Eighteen club members and two leaders attended.

6. Special training to be given live stock judging and other judging contests at the county fair.

This was done. A more detailed statement of work is given further on in this report.

1. One new local Four-H Club was organized a year ago, which has functioned quite satisfactorily during the year, making a total of fourteen local clubs in the county. There is still a need for more local leaders and several project leaders in the larger clubs. Special effort will be made to get such leaders to function as soon as possible.

Club work has made considerable progress during the year and is attracting the attention of more people and gaining in prestige generally as indicated by comments and complimentary remarks from some of the most prominent citizens of the county. A prominent lawyer and former commonwealth's attorney recently stated that "it is doing more for Rockbridge county than anything which has ever been done in the county".

2. Members are not permanently enrolled and reported to the State Club Agent until they have actually started their project and given reasonable assurance that they are going to carry it thru the year. This eliminates enrolling a number of boys and girls each year who have not yet come to realize the real value and importance of the work.

3. The progress of demonstration team work has been a little discouraging. The county agent believes that this has been due to lack of sufficient time on his part to properly follow up the starts which have been made. The number of teams which have made a good start and lost interest before they had fully developed the ability to put on a good demonstration is very large, as compared with the number of good teams in the county. It is hoped to correct this with better local leadership during the coming year.

4. The county Four-H Rally held in June was very successful and did much to stimulate interest in Club work. A very successful

4

program was carried out which included a demonstration by two small girls from a rather remote section of the county. This made a great impression on a number of those present.

All indications were for a very successful county club short course to be held in camp the third week in August. As stated above this work had to be abandoned at the last moment (the Saturday before the short course would have started on Monday) because of the prevalence of infantile paralysis in this section of the State at that time.

5. No doubt the attendance at the State Short Course would have been much larger had it not been that many members planned to attend the County Short Course which was held two weeks later, and could not attend both.

6. Two special all day meetings were held for the purpose of training interested club members in general livestock judging. One of these (the first) was held in the county and conducted by the county agent. Fourteen boys attended. Four farms were visited on which good livestock of several kinds was available for use in giving instruction and practice work.

A little later nine of these boys met with similar groups from two nearby counties for further training by the Extension Animal Husbandman. The entire day was devoted to the work and six farms were visited.

After the county contest which was held at the county fair, the team of three boys selected for the county team were given considerable time for special training before the State Contest held at the State Fair on October 7th.

Two special meetings of club members interested in judging dairy cattle were held for the purpose of training and practice. The first of these meetings was conducted by the county agent and three of the best dairy herds in the county were visited. At the next meeting the Extension Dairy Husbandman had charge and selected the team to represent the county at the State Contest. Unfortunately however, circumstances prevented the dairy judging team from entering the State Contest.

This work has aroused much interest in livestock judging, not only with club members but with their parents as well.

## II. Agromony Work

Goal	Results
1. Hold at least one county line and soil improvement tour	One tour held
2. Hold local meetings on demonstration farms throught the county.	Five such meetings were held.
3. Conduct 30 alfalfa demonstrations.	Forty-seven being conducted.

- |  |  |
|--|--|
| 4. Fifty sweet clover demonstrations.  | Fifty-nine conducted.  |
| 5. Fifty other clover demonstrations.  | Forty-four conducted.  |
| 6. Twelve pasture improvement demonstrations.  | Eighteen being conducted.  |
| 7. Sixty lime or marl demonstrations in connection with crops.                                 | Eighty-two demonstrations conducted.   |
| 8. Better seed of varieties best adapted to the county to be used in all above demonstrations. | Improved adapted seed was used in nearly all of the above demonstrations. Only two exceptions are known. |

1. The lime and soil improvement tour was held the first week in June. The time sets usually a time when farmers can find time for such events, coming between the first cultivation of the corn crop, and before grain harvest starts. Unfortunately however, very wet weather during the last half of May prevent cultivation of corn and the exact dates of the tour were the first days on which the ground was dry enough to work. There being no time to loose in checking weed growth in the corn fields, many farmers who would otherwise have attended the tour or at least a part of it could not do so. However it is believed that the tour was well worth while even for the rather small number of farmers who attended and also for the publicity it gave to soil improvement work in the county.

2. Lack of sufficient time prevented holding as many meetings at demonstrations as would have been most desirable.

3 to 5. The 160 clover and alfalfa demonstrations which are being conducted in the county are exerting a great influence to increase the acreage of such crops in the county and correspondingly reduce the acreage of wheat. Under present conditions wheat is not a profitable crop on the large majority of farms. Due to rather depleted soils on most farms yields are not large enough to meet the cost of production in many instances.

The many clover and alfalfa failures in past years had caused many farmers to abandon hope of successfully growing these crops. These demonstrations in which lime, adapted seed and the best methods are used are rapidly proving to the majority that clovers and alfalfa can successfully be raised on any Rockbridge farm. This increased acreage of legume crops is not only helping to improve soil fertility but the crops raised prove more profitable than the small yields of wheat.

Many very outstanding demonstrations of the value and importance of lime in growing successful crops of alfalfa and clovers have been conducted in connection with the growing of these crops. A number of farmers have left a part of a field seeded to one of these crops without lime, while the other part of the field was limed according to recommendations. A few farmers have limed only a strip thru the middle of a field. Almost invariably the result has been a very successful crop of clover or alfalfa when other conditions were favorable, on the limed area and a near or complete failure on the unlimed area. In a number of cases such fields have attracted much attention, and have convinced many farmers who were very skeptical of the value of lime.



Unlimed

Limed

Figure 1.

The above picture taken on the farm of J. M. Laird near Kerrs Creek, shows the effect of lime applied during the winter before seeding red and alsike clover in the spring. The child is standing at the division of the limed and the unlimed area.

Figures 2 and 3 were taken in the same field. Fig. 2 is a close up taken on the unlimed side of the field and is typical of that part of the field, - a rather sparse growth of narrow-leaved plantain, sorrel and other weeds with practically no clover. Figure 3 is quite typical of the limed part of the field. There was apparently a small amount of sweet clover seed applied as a few scattering plants are to be found one of which is shown.

News articles calling the attention of the public to demonstrations of this kind have aroused much interest.

6. In pasture improvement work, top dressings of lime and superphosphate have been given chief consideration, and most of the demonstrations being conducted along this line are devoted to such applications combined with mowing weeds at least twice a year. In several instances

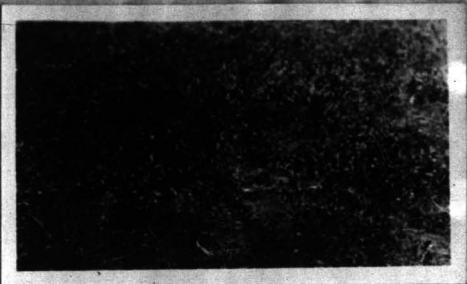


Figure 2

however, farmers have been induced to cover badly depleted pasture lands with straw or corn stalks. A few farmers in the county have followed the practice of feeding whole corn stover to cattle during the winter on the poorer places in their pasture lands for a number of years. Yet on many farms throught the county large quantities of straw and corn stalks are allowed to rot and wash away without being utilised in any way whatever. Figure 4 shows the use of straw on a run down pasture field.

Pasture demonstrations have not shown quite such conspicuous results as some of the demonstrations of lime on legume crops, but on several farms very noticeable improvement has been obtained. Thru news paper publicity calling attention to such demonstrations and a few field meetings many people in the county have seen the results obtained.

7. In a number of instances lime and marl have shown quite noticeable results on crops other than clovers and alfalfa. On several farms wheat has shown noticeable improvement as a result of applying lime at the time of or a short time before seeding. The most outstanding results, however are shown on the legume crop, which in turn benefits other crops following.

8



Fig. 3 lined. (See Fig. 2)



Figure 4.

**G. Better seed and its importance in growing profitable crops of all kinds has been given a great deal of publicity for several years past. The county agent and the Advisory Board have cooperated with the seed houses which give proper recognition to the importance of good seed, and with the Crop Improvement Association to the fullest possible extent. The most outstanding results have been obtained in the use of adapted strains of clovers and alfalfa.**

**Fertilizers were not included in the program this year but considerable attention has been given to the subject, particularly encouraging the use of higher analysis fertilizers. In personal contacts many misconceptions of farmers with respect to the use of fertilizers have been corrected, and a number of farmers have been induced to use more fertilizers to advantage. On several farms very outstanding results have**

been obtained with heavier than usual applications of high analysis fertilizers on corn and wheat. The use of nitrate of soda for top dressing wheat has increased very rapidly during the past two years as a result of very good results obtained on demonstrations. Until the past three years only one farmer in the county had used nitrate on wheat as far as the county agent or the Advisory Board could determine. This year not less than 35 tons of nitrate of soda were used in the county.

One may readily draw the conclusion from the report given above of agency work that the most outstanding feature of the work has been soil improvement. In this connection in particular the Figures 5 and 6 are of special interest. Figure 5 was taken in a corn field which has been farmed by



Figure 5

tenants for a number of years and no attention given to soil fertility. If any attempt was ever made in the past ten years to get a stand of any legume crop on the land it doubtless resulted in failure. It has been cropped entirely in corn and wheat. Each successive crop of wheat straw for many years past has been added to the pile at one side of the field where it rots as nature may demand. Figure 7 shows where a good deal of the fertility of the soil from this field has gone and is lying idle.

The crop shown in Figure 6 grew in an adjoining field which is on a farm where a consistent soil improvement program of lime, legume crops, livestock feeding and

10

correct fertilization have been practiced for several years. The two pictures were taken within thirty yards of the same spot. The soil type is the same in each, the difference being due entirely to the method of farming.



Figure 6



Figure 7

Mr. G.F. Moore, on whose farm Figure 6 was taken is making very good profits from the sale of alfalfa, and beef cattle.

He has also sold a considerable amount of certified seed barley during the past few years. His operations, which have been directed largely by advice of the county agent, have attracted quite widespread attention throught the county.

III. Farm Management and Farm Accounts

Goal

Results

1. Supervise 15 farm account and farm management demonstrations in cooperation with Agr. Economics Department and Rockbridge National Bank. Eleven such demonstrations were conducted.

2. Develop two or more community organizations in the county One organization developed

1. For some reason which I am hardly able to determine farm accounts have not gained in popularity in the county to any extent since the work was started about four years ago. The only reason given by farmers themselves is that a detailed account is not worth the trouble it takes to keep it. Several rather half hearted reasons have been given none of which seem to be basially sound. The Cashier of the Rockbridge National Bank who has taken a great deal of interest in promoting this work believes that it is largely due to the fact that many farmers resent affording any possibility of anyone else knowing just what their cash transactions are, how much they are making or what the actual value of their property and crops is.

Realizing the importance of practical farm accounts a continued effort will be made to interest more farmers in keeping accounts the coming year.

2. A very successful community association was established this year at Brownsburg, with the invaluable help of Mr. B.L.Hummel, Community Organization Specialist. The organization is now functioning very satisfactorily, and accomplishing much for the improvement of the community.

IV. Animal Husbandry

Animal husbandry work in 1929 was conducted along two major lines, viz. Market Lamb improvement, and pure bred sires. In addition many farmers were advised on feeding problems as a result of numerous requests along this line.

Numerous requests are also received each year from farmers having sick animals for advice in curing such ailments. Such requests are usually referred to the local

veterinarianless it is very evident that the trouble is due to some common ailment for which a definite remedy is well known.

1. Market lamb improvement work was conducted by several local demonstration flocks, which were treated according to recommendations. In nearly every case farmers who agreed at the beginning of the year to make thiers a demonstration flock, followed recommendations fully. Local meetings were held at these places once during the year. It is believed however that the general publicity brot more definite results than the meetings as the latter were not well attended. Local leaders in several communities did much to interest other sheep men in the use of pure bred rams, trimming lambs and treating their flocks for stomach worms. Much improvement has also been made in recent years in methods of feeding ewes and lambs. The manager of the Cooperative Livestock Marketing Association states that the quality of lambs sold throught the county has improved very noticeably over those sold seven or eight years ago.

2. Eighteen sheep owners were assisted in locating good type pure bred rams and twelve men in securing good pure bred beef bulls. Eleven farmers were assisted in securing good type registered boars and several days time was devoted to work in cooperation with a registered stallion association.

Maps of each district of the county were prepared on which small cuts of pure bred and scrub bulls were pasted indicating the location of the respective bulls of the area mapped. This required much time and work before the maps were ready to be placed in a prominent public place in each district. However they attracted much attention and favorable comment on the work, and I feel sure had considerable influence in interesting a number of farmers in getting their scrub bull off of the map.

#### V. Poultry Husbandry

Goals	Results
1. Induce at least ten farmers now raising standard bred birds to adopt one of the leading breeds.	This was not pushed very forcefully as it was later decided by the Advisory Board to be of less importance than certain other work.
2. Induce ten additional farmers to hatch early or buy early hatched chicks.	Not less than ten made this change.
3. Induce at least 20 farmers to remodel poultry houses or build improved houses.	Not less than 21 houses so constructed.

- |   |   |
|---|---|
| <p>4. Twenty farmers to feed better balanced rations as recommended by the Poultry Department, V.P.I.</p>   | <p>Not less than 35 fed better balanced rations for the first time as a result of advice given.</p> |
| <p>5. Twenty additional farmers to cull their flocks.</p>   | <p>Not less than 30 culled for the first time.</p>  |
| <p>6. In cooperation with the two poultry plants at Harrisonburg which handle most of the poultry produced in Rockbridge county, a number of local dealers were induced to buy eggs by grade, paying for them according to grade. Several difficulties in this connection yet remain to be corrected, but it is believed that considerable progress has been made in the right direction.</p> |   |

VI. Dairy Husbandry

Goal	Result
<p>1. Induce ten farmers to improve their dairy rations, using home-grown feeds more largely.</p>	<p>At least thirty-four farmers made such changes as recommended in feeding better rations.</p>
<p>2. Induce 3 additional farmers in dairy producing sections to purchase high producing bulls.</p>	<p>Seven farmers were assisted in securing pure bred dairy bulls.</p>
<p>3. Cooperate with creameries in cream improvement.</p>	<p>A general publicity campaign was conducted to interest more farmers in cream improvement.</p>
<p>Special attention was given to better cooling methods and more attention to sanitary measures in handling and marketing cream. This work was done by circular letters and personal visits made to places recommended by the creamery as needing most attention in this connection.</p>	

VII. Horticulture

Comparatively little attention has been given to horticulture work due to the fact that it is of rather minor importance in the county as a whole. Work along horticultural lines has been confined to about six commercial apple growers who were especially interested. The services of specialists from the Horticulture Department at V.P.I. have been obtained in this connection. Such specialists helped two days.

Spray service information was sent to all farmers and orchardists during the spraying season.

who are in the least interested in making use of the service. Three demonstrations of rodent control in orchards were given, and poisoned bait obtained for five orchardists.

### VIII. Agricultural Engineering

Goal	Results
1. At least 5 farmers in the county be induced to install running water and sewage disposal systems.	Six running water systems installed and two sewage disposal systems installed.
2. Other agricultural engineering work consisted largely of furnishing plans and advice in the construction of farm buildings. Two farmers were advised in connection with land drainage projects.	
3. Three news paper articles were prepared and published calling attention to the building plans available by the Agricultural Engineering Department and the importance of care in planning and properly constructing farm buildings.	

### IX. Miscellaneous Work

Many special requests for information and advice of a miscellaneous nature are received during the year which are of course filled as fully as possible. Under this heading should probably be included time devoted to getting farmers and others interested in attending important meetings, conventions and sales of pure bred livestock held outside the county. During the year several days time were used in this way.

The preparation and showing of a county agricultural exhibit at the Virginia State Fair required nearly ten days time. The preparation of an educational exhibit shown at the county fair took about two days time, and other work in connection with the fair several days, all of which was very important work.

### X. Conclusion

All achievements during the year have been quite satisfactory. Results obtained were sufficiently satisfactory to the county Board of Supervisors that they appropriated funds for the employment of an office assistant during the summer months.

Probably the three most outstanding achievements during the year are (1) progress made in the soil improvement campaign, (2) the establishment of two successful community organizations, and (3) further development and improvement of Four-H Club work.

The district agent, State and Assistant State Club agents and several specialists have contributed help in carrying out the program which was invaluable. In fact it would of course have been impossible to make the accomplishments reported in this report without their help. This is especially true of the organization work which was done entirely with the advice of Mr. B.L.Hummel, the dairy and creamery work in which Mr.F.A. Buchanan and Mr. C.W.Negron contributed valuable assistance and the soil improvement work in which Mr. W.L.Byrne and Mr. Sam D. Preston cooperated. The farm accounting and other agricultural economics work was promoted largely by Mr. W.J. Bushelle and Dr.C.C.Taylor. Mr. K.A.Keithly of the State Division of markets is due most of the credit for the success of the county wool pool.

THE END

16

COOPERATIVE EXTENSION WORK IN AGRICULTURE AND HOME ECONOMICS

U. S. Department of Agriculture  
and State Agricultural Colleges  
Cooperating

Extension Service,  
Office of Cooperative Extension Work,  
Washington, D. C.

ANNUAL REPORT OF COUNTY EXTENSION WORKERS

This report form is to be used by county extension agents, such as county agricultural agent, home demonstration agent, club agent, and negro agent, reporting on their respective lines of work.

State VIRGINIA County ROCKBRIDGE  
Report of M. G. Lewis County \_\_\_\_\_ Agent \_\_\_\_\_  
(Name) (Title)  
From December 1, 1928 to November 30, 1929.

If agent has not been employed entire year, indicate exact period. Agents resigning during the year should make out this report before quitting the service.

READ DEFINITIONS, PAGES 3 AND 4.

COUNTY AGENT ANNUAL REPORT.



Approved: \_\_\_\_\_

Date \_\_\_\_\_ State or District Supervisor.

Date \_\_\_\_\_ State Extension Director.

## SUGGESTIONS RELATIVE TO THE PREPARATION OF THE COUNTY EXTENSION AGENT'S ANNUAL REPORT.

The annual report should be a review, analysis, interpretation, and presentation to the people of the county, the State, and the Nation of the sum total of the extension activities in each county for the year and the results obtained by the county extension agent assisted by the subject-matter specialists. The making of such a report is of great value to the county extension agent and the people of the county in showing the progress made during the year as a basis for future plans. It is of vital concern also to the State and Nation as a measure of rural progress and a basis for intelligent legislation and financial support.

Separate statistical and narrative reports are desired from each county extension agent in charge of a line of work, such as county agent, home demonstration agent, boys' and girls' club agent, and negro agent. Where an assistant agent has been employed a part or all of the year, a report on his or her work should be included with the report of the leader in charge of that line of work. Where an agent in charge of a line of work has quit the service during the year, the information contained in his or her report should be incorporated in the annual report of the agent on duty at the close of the report year, and the latter report so marked. Where two or more extension agents are employed in a county, each in charge of a line of work, care should be exercised to avoid including the same data in the statistical report of more than one agent.

At least four copies of the annual report should be made: One copy for the county officials, one copy for the agent's files, one copy for the State extension office, and one copy for the Extension Service, United States Department of Agriculture. The report to the Washington office should be sent through the State extension office.

### NARRATIVE SUMMARY.

The narrative report should be a statement in orderly fashion and arranged under appropriate subheadings of the work done, methods used, and results obtained under each project, as well as of the general work accomplished. Every statement should be clear-cut, concise, forceful, and, where possible, reinforced with ample data from the statistical summary. In the preparation of the part of the report relative to each project, the results reported in the statistical summary for the project should be analyzed, conclusions drawn, and recommendations made. The report may well be illustrated with photographs, maps, diagrams, blue prints, or copies of charts and other forms used in demonstration work. Full credit should be given to all cooperating agencies. The lines should be single-spaced, with double space between the paragraphs, and reasonably good margins left. The pages should be numbered in consecutive order.

The following outline is suggestive of how the narrative report may be clearly and systematically presented:

### SUGGESTIVE OUTLINE OF ANNUAL NARRATIVE REPORT.

- I. Cover and title page.
- II. Table of contents.
- III. Status of county extension organization.
  - (1) Form of organization—changes and development.
  - (2) Function of local people, committees, or project leaders in developing the program of work.
  - (3) General policies, including relationships to other organizations.
- IV. Program of work, goals established, methods employed, and results achieved.
  - (1) Factors considered and methods used in determining program of work.
  - (2) Project activities and results.
 

<ol style="list-style-type: none"> <li>(a) Soils</li> <li>(b) Farm crops (Horticulture)</li> <li>(c) Home gardens (Sanitification of home grounds)</li> <li>(d) Forestry</li> <li>(e) Rodents, predatory animals, and birds.</li> <li>(f) Animal husbandry</li> <li>(g) Dairy husbandry (Home dairy)</li> <li>(h) Poultry husbandry (Home poultry)</li> </ol>	}	(including diseases and insects).
---	---	-----------------------------------

3

**SUGGESTIVE OUTLINE OF ANNUAL NARRATIVE REPORT—Continued.**

**IV. Program of work, etc.—Continued.**

**(2) Project activities and results—Continued.**

- (a) Agricultural engineering.
- (b) Agricultural engineering—home.
- (c) Agricultural economics, including farm management and marketing.
- (d) Home marketing.
- (e) Foods.
- (f) Nutrition.
- (g) Clothing.
- (h) Home management.
- (i) Home furnishings.
- (j) Home health and sanitation.
- (k) Community activities.
- (l) Miscellaneous.

**V. Outlook and recommendations, including suggestive program of work for next year.**

**VI. Summary of activities and accomplishments, preferably of one or two typewritten pages only, placed at the beginning or end of the narrative report.**

**STATISTICAL SUMMARY.**

To supplement the narrative part of the report, and in order that comparable State and National summaries may be made, it is necessary to include a statistical summary of the work in each county. The following form has been prepared to insure uniformity of reporting. In addition to the questions asked under each subdivision of the report, space is provided to add further data if desired. The statistical summary will grow naturally out of the field and office records.

**DEFINITIONS OF TERMS USED IN THIS REPORT.**

1. A PROGRAM OF WORK is a definitely outlined plan for extension work.
2. A PROJECT is a definite, systematic, organized plan for carrying out some phase of the extension program of work, providing for what is to be done, how much, when, where, how, and by whom.
3. MISCELLANEOUS WORK includes work which has not yet become a regular part of the program of work—work other than project work.
4. A COMMITTEE, for the purposes of this report, may be any one of the several units into which the county is divided for purposes of conducting organized extension work.
5. A PROJECT LEADER OR LOCAL LEADER is a person, selected because of his or her special interest and fitness, who functions as a leader in advancing some phase of the local program of extension work?
6. A DEMONSTRATION is an example designed to show the practical application of an established fact. Demonstrations as contemplated in this report are of two kinds, method demonstrations and result demonstrations.
  - A method demonstration is a demonstration given by an extension worker or other trained leader to a group for the purpose of showing them how to carry out a practice. Synonym: Lecture demonstration. Examples: Demonstrations of castrating, mixing of spray materials, and culling of poultry.
  - A result demonstration is a demonstration carried on by a farmer, farm woman, boy, or girl, under the direct supervision of the extension worker, to point out locally the value of a recommended practice. Such a demonstration involves a substantial period of time, records of results, and comparisons, and is designed to teach others in addition to the person conducting the demonstration. It should not be confused with the adoption of a farm or home practice resulting from a demonstration or other teaching activity, but which is not employed by the extension worker as a means of teaching. Examples: Demonstrating that the application of fertilizer on cotton will result in more profitable yields; that underweight of certain children can be corrected through proper diet; or that the use of certified seed in growing potatoes is a good investment.
7. A DEMONSTRATOR is a farmer, farm woman, boy, or girl who, under the direction of the extension service, conducts a result demonstration.
8. MEMBERS COMPLETING should include those who have satisfactorily finished the work outlined for the current year.
9. A DEMONSTRATION MEETING is a meeting held to give a method demonstration or to start, inspect, or further a result demonstration.
10. A TRAINING MEETING is a meeting at which project leaders or local leaders are trained to carry on extension activities in their respective communities.
11. AN OFFICE CALL OR TELEPHONE CALL is a visit or call by a farmer or other person seeking agricultural or home economics information, as a result of which some definite assistance or information is given.
12. A FARM VISIT is a call at a farm by the agent at which some definite information is given or concrete plan of work outlined, or some valuable information obtained from the farmer regarding his work, or the better practice prevailing in his neighborhood.
13. A HOME VISIT is a call at a home by the agent at which some definite information is given or concrete plan of work outlined, or some valuable information obtained from the farm woman regarding her work, or the better practice prevailing in her neighborhood.
14. DAYS IN OFFICE should include time spent by the county agent in his office, at county agent conferences, and any other work directly related to office administration.
15. DAYS IN FIELD should include all days spent on official duty other than those spent in office.
16. LETTERS WRITTEN should include all single letters on official business.

**DEFINITIONS OF TERMS USED IN THIS REPORT—Continued.**

17. A **FARMERS' INSTITUTE** is one of a series of meetings of one to two days' duration, arranged by a central State farmers' institute agency, at which agricultural and home-economics problems are discussed, usually by outside speakers employed for the purpose.
18. An **EXCURSION ON MOVABLE SCHOOLS** is an itinerant school usually of two to six days' duration where practical but systematic instruction is given to persons not resident at the college. An **EXCURSION SMOKE COURSE** differs from an extension school in that it is usually held at the college or other educational institution and usually for a longer period of time, but not exceeding two weeks.
19. **RECORDS** consist of definite information filed in the county office that will enable the agent to verify the data on extension work included in this report.
20. **FARM OR HOME PRACTICE ADOPTED** is a new or improved practice adopted on a farm or in a home during the year as a result of extension teaching. Examples: Spraying of potatoes for disease, canning of fruits and vegetables, use of balanced rations, and hat making.

**GENERAL ACTIVITIES.**

Report only this year's extension activities and results that are supported by records.

If an assistant agent has been employed during the year, include his or her work with that of the agent.

1. List below the names, titles, and periods of service of the county extension agents whose work is included in this report. 1

<i>M. G. Lewis</i> <small>(Name)</small>	<i>County Agent</i> <small>(Title)</small>	<i>12</i> <small>(Months of service this year)</small>
---	---	---
  
2. County association, if any, fostering extension work. 11

(a) Name <i>Rockledge County Agricultural Advisory Board</i>	<i>1</i>
(b) Number of members	<i>25</i>
2. Number of communities in county where extension work should be conducted. 2

	<i>21</i>
--	-----------
3. Number of above communities in which the extension program has been cooperatively worked out by extension agents and people concerned. 3

	<i>20</i>
--	-----------
4. Number of voluntary county, community, or local leaders actively engaged in forwarding the extension program with— 4

(a) Juniors	<i>12</i>
(b) Adults	<i>36</i>
5. Number of clubs carrying on extension work: 5

(a) Junior	<i>15</i>
(b) Adult	<i>6</i>
6. Membership in above clubs: 6

(a) Boys <sup>1</sup>	<i>142</i>	(c) Men	<i>225</i>
(b) Girls <sup>2</sup>	<i>144</i>	(d) Women	<i>23</i>
7. Number of club members completing: 7

(a) Boys <sup>1</sup>	<i>122</i>	(c) Men	<i>200</i>
(b) Girls <sup>2</sup>	<i>112</i>	(d) Women	<i>20</i>
8. Number of members in junior club work for four or more years: 8

(a) Boys	<i>34</i>
(b) Girls	<i>41</i>

<sup>1</sup> Report the total number of different boys or girls enrolled in club work. This total should equal the sum of the present enrollments reported on page 8 of B, less any duplications due to the same boy or girl carrying on two or more subject-matter lines of work.

<sup>2</sup> Include those boys and girls enrolled in club work as reported under 6(a) and 6(b) who have finished the work undertaken on each portion of B as it was planned to finish during the report year.

## GENERAL ACTIVITIES—Continued.

8. Number of junior teams trained	(a) Judging	3	9
	(b) Demonstration	5	
9. Number entering colings this year who may have been club members		9	10
11. Total number of farm visits <sup>1</sup> made in conducting extension work		867	11
12. Number of different farms visited		480	12
13. Total number of home <sup>2</sup> visits made in conducting extension work		0	13
14. Number of different homes visited			14
15. Number of calls <sup>3</sup> relating to extension work	(a) Office	1041	15
	(b) Telephone	1212	
16. Number of days agent spent in office		117	16
17. Number of days agent spent in field		180	17
17½. Number of news articles prepared for press <sup>4</sup>		42	17½
18. Number of individual letters written		1341	18
19½. Number of bulletins distributed		2478	19½
19. Number of fairs at which extension exhibits were made	(a) Community, <i>etc.</i>	0	19
	(b) County	1	
20. Training meetings held for local leaders	(a) Junior work	(1) Number	4
		(2) Leaders in attendance	82
	(b) Adult work	(1) Number	13
		(2) Leaders in attendance	129
21. Method and result demonstration meetings <sup>5</sup> held (do not include meetings reported in number 20)	(a) Number	24	21
	(b) Attendance	1249	
22. Farmers' institutes held	(a) Number	0	22
	(b) Number of sessions		
	(c) Attendance		
23. Extension schools <sup>6</sup> and short courses held	(a) Number	0	23
	(b) Attendance		
	(c) Number	0	
24. Encampments held	(a) Junior	(1) Number	0
		(2) Attendance by club (a) Boys members (b) Girls	
	(b) Farm women	(1) Number	0
		(2) Attendance by club members	
	(3) Total attendance		
25. Other extension meetings attended and not previously reported	(a) Number	27	25
	(b) Attendance	9814	
26. Number of meetings at which were shown	(a) Lantern slides		26
	(b) Motion pictures	14	
	(c) Charts	10	

<sup>1</sup> Do not count the same visit as both a farm visit and a home visit.

<sup>2</sup> See definition on page 5.

<sup>3</sup> Includes county and State press, agricultural journals, and home magazines. Do not count those relating to notices of meetings only.

PROGRAM SUMMARY.

List below information on each project of the program of work for the year. If an assistant agent has been employed during the year, include his or her time with that of the agent. This page should not be filled out until the questions on the following pages have been answered.

Title of project.	Number of non- resident partici- pating. <sup>1</sup>	Number of local residents assisting. <sup>2</sup>	Days specialists employed.	Days spent directed to projects.	
	00	00	00	00	
Illustrative entry, Poultry husbandry	0	7	2	14	
27. Soils (page 7)	21	18	4	46	27
28. Farm crops (pages 8, 9, 10, 11)	21	19	5	44	28
29. [Horticulture (page 12)—home gardens (page 27) [Sanitification of home grounds (page 26)]	6	5	2	9	29
30. Forestry (page 13)	3	3	2	7	30
31. Rodents, predatory animals, and birds (page 13)	6	3	1	3	31
32. Animal husbandry (pages 14, 15, columns b, c, d, f)	19	17	3	26	32
33. Dairy husbandry (pages 14, 15, column a)—home dairy (page 29)	13	12	8	41	33
34. Poultry husbandry (pages 14, 15, column a)—home poultry (page 28)	20	20	8	45	34
35. [Rural engineering (page 16)] [Rural engineering—home (page 26)]	5	2	1	5	35
36. Agricultural economics (pages 17, 18)—home marketing (page 30)	15	20	5	21	36
37. Foods (pages 19, 20)			1		37
38. Nutrition (page 21)					38
39. Clothing (page 22)					39
40. Home management (page 23)					40
41. Home furnishings (page 24)			1		41
42. Home health and sanitation (page 25)					42
43. Community activities (pages 18, 31)	16	25	8	40	43
44. Miscellaneous (pages 18, 31) <sup>3</sup>					44
<i>Under #3 is included both time devoted to establishing a community organization (6-18) and that used in connection with 15 local committees from H. Clubs.</i>					
TOTAL	x x x	x x x	49	297	

<sup>1</sup> The individual entries in this column should not exceed entry for question 2, page 4.

<sup>2</sup> The individual entries in this column should not exceed entry for question 4, page 4.

<sup>3</sup> Boys' and girls' club work should be distributed among the proper subject-matter headings and not entered as a separate project.

## FARM-DEMONSTRATION WORK.

### SOILS.<sup>1</sup>

Report only this year's extension activities and results that are supported by records.

46. Number of method demonstrations given. (See definition 6, page 3.)	42	46
46. Number of result demonstrations started or under way. (See definition 7, page 3.)	67	46
47. Number of result demonstrations completed or carried through the year.	69	47
48. Number of acres involved in these completed demonstrations.	700	48
49. Number of farms adopting improved practices in the use of commercial fertilizer this year.	45	49
50. Tons involved in preceding question.	122	50
51. Number of farms taking better care of farm manures this year.	20	51
52. Number of farms using lime or limestone for the first time.	82	52
53. Tons of lime or limestone so used.	750	53
54. Number of farms plowing under cover or other green manure crops for the first time.	450	54
55. Acres of cover and green manure crops so plowed under.	2000	55
55j. Number of farms adopting other improved soils practices this year. (Specify below.)		55j
56. Total number of different farms adopting improved practices, relative to the soils work reported on this page. (Include questions 47, 49, 51, 52, 54, and 55j less duplications.)	450	56

*Soil improvement work has been given much more time and attention this year than in previous years a fuller account of the program activities & results is given in the Narrative Report.*

<sup>1</sup> For drainage, irrigation, land clearing, and treading see "Agricultural Engineering," page 18.

**CEREALS\***

Report only this year's extension activities and results that are supported by records.

Item	60 Cereals	61 Wheat	62 Oats	63 Rye	64 Barley	(7) Other	
57. Number of method demonstrations given	12	7	5	0	3	0	57
58. Number of adult result demonstrations started or under way	26	24	11	5	24		58
59. Number of adult result demonstrations completed or carried through the year	26	23	8	4	22		59
60. Acres involved in these completed demonstrations	130	106	65	170	160		60
61. Increased yield per acre on demonstrations	8 bu.	4 bu.	6 bu.	4 1/2 bu.	6 bu.	bu.	61
62. Number of junior clubs <sup>1</sup>	0	0	0	0	0		62
63. Number of members enrolled	(1) Boys	23	0	0	0	0	63
	(2) Girls	0	0	0	0	0	
64. Number of members completing <sup>2</sup>	(1) Boys	23					64
	(2) Girls	0					
65. Number of acres grown by junior club members completing	93 3/4						65
66. Total yield of cereals grown by junior club members	45 7/8 bu.	bu.	bu.	bu.	bu.	bu.	66
67. Number of farms planting improved seed for the first time	125	85	75	36	120		67
68. Number of farms practicing seed selection for the first time	90	76	11	4	30		68
69. Number of farms treating seed grain for smut for the first time	0	65	70	6	145		69
69a. Number of farms adopting other improved practices for the first time. (Specify below.)	12	3	0	0	0		69a
70. Total number of different farms adopting improved practices relative to the cereal work reported on this page. (Exclude questions 58, 64, 67, 68, 69, and 69a less duplications.)	175	85	75	40	180		70

*Reason this year there has been a very noticeable decrease in the number of farmers who treated seed wheat to prevent obtaining smut as a result of their being no injury to the wheat crop for three years past.*

\* Report fall-acre crops for year they are harvested.

<sup>1</sup> Includes crop by name.

<sup>2</sup> Items which do not require clubs as a project basis should not report on this question but should report on enrollment and completion.

<sup>3</sup> Include those who have finished the work undertaken, or each portion of it as it was planned to finish during the report year.

**LEGUMES AND FORAGE CROPS.**

Report only this year's extension activities and results that are supported by records.

Item	60	61	62	63	64	65	71
	Adults	Boys/tons	Swat show	Columbus show	Three Jack, white, white	Cowpeas	
71. Number of method demonstrations given	7	0	6	0	0	0	71
72. Number of adult result demonstrations started or under way	47	33	59	0	44	0	72
73. Number of adult result demonstrations completed or carried through the year	45	30	56	0	44	0	73
74. Acres involved in these completed demonstrations	185	120	210	0	200		74
75. Increased yield <sup>1</sup> per acre on demonstrations	1 ton	<del>12</del> bu/tons	14 tons	tons	1/2 tons	bu/tons	75
76. Number of junior clubs <sup>2</sup>	0	0	0	0	0	0	76
77. Number of members enrolled	(1) Boys	0	0	0	0	0	77
	(2) Girls	0	0	0	0	0	
78. Number of members completing	(1) Boys						78
	(2) Girls						
79. Number of acres grown by junior club members completing							79
80. Total yield <sup>1</sup> of crops grown by junior club members	tons	bu/tons	tons	tons	tons	bu/tons	80
81. Number of farms planting improved seed for the first time	48	35	60	0	65	0	81
82. Number of farms practicing seed selection for the first time	0	10	5	0	90	0	82
83. Number of farms inoculating for these crops for the first time	40	40	50	0	0	0	83
83a. Number of farms adopting other improved practices for the first time. (Specify below.)	0	0	0	0	0	0	83a
84. Total number of different farms adopting improved practices relative to the legumes and forage crops reported on this page. (Include questions 73, 75, 81, 82, 83, and 83) less duplications.)	50	40	75	0	90 <del>80</del>	0	84

*Legume crop work the past year has been very similar to that conducted in previous years stressing mainly increased acreage to replace small grains and other less profitable crops. Better seed lime and inoculation have been given more attention. More time has been given to legume crops the past year than in previous years.*

<sup>1</sup> Estimate whether yield in bushels of seed or tons of crop.

<sup>2</sup> Teams which do not organize clubs on a project basis should not report on this question but should report on enrollment and completion.

## LEGUMES AND FORAGE CROPS—Continued.

Report only this year's extension activities and results that are supported by records.

Item	(1)	(2)	(3)	(4)	(5)	Total Other <sup>1</sup>
	Velvet beans, bu. tons	Field beans, bu. tons	Fava beans, bu. tons	Legumes, bu. tons	Pastures, acres	
71. Number of method demonstrations given	0	0	0	0	0	71
72. Number of adult result demonstrations started or under way	0	1	0	3	18	72
73. Number of adult result demonstrations completed or carried through the year	0	1	0	3	16	73
74. Acres involved in these completed demonstrations	0	52	0	12	290	74
75. Increased yield <sup>2</sup> per acre on demonstrations	bu. tons	more or less bu. tons	bu. tons	more or less bu. tons	X X X	bu. tons
76. Number of junior clubs <sup>3</sup>	0	0	0	0	0	76
77. Number of members enrolled	(1) Boys	0	0	0	0	77
	(2) Girls	0	0	0	0	
78. Number of members completing	(1) Boys					78
	(2) Girls					
79. Number of acres grown by junior club members completing						79
80. Total yield <sup>2</sup> of crops grown by junior club members	bu. tons	bu. tons	bu. tons	bu. tons	X X X	bu. tons
81. Number of farms planting improved seed for the first time	0	1	0	2	6	81
82. Number of farms practicing seed selection for the first time	0	0	0	2	0	82
83. Number of farms inoculating for these crops for the first time	0	1	0	2	0	83
83 <sup>1</sup> . Number of farms adopting other improved practices for the first time. (Specify below.)	0	0	0	0	36	83 <sup>1</sup>
84. Total number of different farms adopting improved practices relative to the legumes and forage crops reported on this page. (Include questions 73, 78, 81, 82, 83, and 83 <sup>1</sup> less duplications.)	0	1	0	3	36	84

83<sup>1</sup> under pastures refers to farms on which pastures are mowed three or more times per year to keep them close of weeds, but not carrying out the entire pasture improvement program.

A very profitable crop of Korean lespedeza seed was harvested on one farm this year.

<sup>1</sup> Includes crop by name.<sup>2</sup> Indicates whether yield is bushels of seed or tons of cured forage.<sup>3</sup> Clubs which do not organize clubs on a project basis should not report on this question but should report on enrollment and completion.

## POTATOES, COTTON, TOBACCO, AND OTHER SPECIAL CROPS.

Report only this year's extension activities and results that are supported by records.

Item	(4)	(5)	(6)	(7)	(8)
	Irish potatoes	Sweet potatoes	Cotton	Tobacco	(in bushels)
84. Number of method demonstrations given	2	0	0	7	
85. Number of adult result demonstrations started or under way	18	0	0	0	
86. Number of adult result demonstrations completed or carried through the year	18	0	0	0	
87. Acres involved in these completed demonstrations	67	0	0	0	
88. Increased yield per acre on demonstrations	25 bu.	0 bu.	lbs.*	lbs.	
89. Number of junior clubs <sup>1</sup>	0	0	0	0	
90. Number of members enrolled	(1) Boys	20	0	0	
	(2) Girls	1	0	0	
91. Number of members completing work	(1) Boys	20			
	(2) Girls	1			
92. Number of acres grown by junior club members completing	4½				
93. Total yield of crops grown by junior club members	764½ bu.	bu.	lbs.*	lbs.	
94. Number of farms planting improved seed for the first time	36				
95. Number of farms practicing seed selection for the first time	7				
96. Number of farms treating seed for disease for the first time	35				
97. Number of farms spraying or dusting for diseases and insects for the first time	41				
98. Number of farms adopting other improved practices for the first time. (Specify below.)	0				
99. Total number of different farms adopting improved practices relative to potatoes, cotton, tobacco, and other special crops reported on this page. (Include questions 87, 88, 95, 96, 97, 98, and 99; less duplications.)	41				

Extension work in potato production is confined largely to improved seed, disease control and proper fertilization. No sweet potatoes, or cotton and very little tobacco grown.

\* Indicate crop by name.

\* Sweet yield of cotton in pounds of seed cotton.

\* Farms which do not organize clubs or groups on a project need not report on this question but should report on enrollment and completion.

## HORTICULTURE.

Report only this year's extension activities and results that are supported by records.

Item	(6)	(6)	(6)	(6)	(6)	(7)	100
	Tree fruits	Bush and small fruits	Ornamentals	Market garden crops	Vegetables	Specialties of home	
100. Number of method demonstrations given	5	2	1	0	0	4	100
101. Number of adult result demonstrations started or under way	3	3	3	0	4	0	101
102. Number of adult result demonstrations completed or carried through the year	3	3	3	0	4	0	102
103. Acres involved in these completed demonstrations	70	3/4	2 1/4	0	X X X	X X X	103
104. Increased yield per acre on demonstrations	40 bu.	qts.	lbs.	bu.	X X X	X X X	104
105. Number of junior clubs <sup>1</sup>	0	0	0	0	0	0	105
106. Number of members enrolled	(1) Boys	0	0	0	0	0	106
	(2) Girls	0	0	0	0	0	
107. Number of members completing	(1) Boys						107
	(2) Girls						
108. Number of acres grown by junior club members completing						X X X	108
109. Total yield of crops grown by junior club members	bu.	qts.	lbs.	bu.	bu.	X X X	109
110. Number of farms planting improved stock or seed for the first time	70						110
111. Number of farms pruning for the first time	65	25	35				111
112. Number of units involved in preceding question	25000 tons	3 acres	2 1/2 acres	X X X	X X X	X X X	112
113. Number of farms spraying or otherwise treating for diseases and insect pests for the first time	50	40	50	7	350	10	113
114. Number of units involved in preceding question	300 acres	5 acres	9 acres	6 acres	X X X	X X X	114
114. Number of farms adopting other improved practices for the first time. (Specify below.)	8	0	0	0	0	0	114
115. Number of farms adopting improved practices relative to the horticultural work reported on this page. (Include questions 102, 107, 110, 111, 113, and 114) less duplications.)	70	50	50	7	350	10	115
<i>114 1/2 includes grading and packing apples also rodent control in orchards.</i>							

<sup>1</sup> Clubs which do not organize clubs or groups on a project basis should not report on this question but should report on enrollment and completion.

## FORESTRY.

Report only this year's extension activities and results that are supported by records.

118. Number of method demonstrations given		4	117
119. Number of adult result demonstrations completed or carried through the year		4	118
120. Number of acres included in these completed demonstrations		760	119
121. Number of junior clubs <sup>1</sup>		0	120
121. Number of members enrolled	(a) Boys	0	121
	(b) Girls	0	
122. Number of members completing	(a) Boys	0	122
	(b) Girls	0	
123. Number of acres handled by junior club members			123
124. Number of forest or wood-land plantations established this year		0	124
125. Acres involved in preceding question			125
126. Number of farms assisted in forest management this year		6	126
127. Acres involved in preceding question		800	127
128. Number of farms planting windbreaks this year		0	128
129. Number of farms attempting to control white-pine blister rust for first time		0	129
130. Number of acres involved in preceding question			130
130a. Number of farms adopting other improved practices for the first time. (Specify below.)		15	130a
131. Total number of farms adopting improved practices relative to the forestry work reported on this page. (Include questions 118, 122, 124, 126, 128, 129; and 130) less duplications.		20	131

*126 refers to all farms on which systematic cutting and thinning was practiced.*

RODENTS AND MISCELLANEOUS<sup>1</sup> INSECT AND ANIMAL PESTS.

Report only this year's extension activities and results that are supported by records.

Item	90 Rabbits	91 Other animal pests <sup>2</sup>	92 Grass-hoppers	93 Other insects <sup>3</sup>	
132. Number of method demonstrations given	4	0	0	0	132
133. Number of result demonstrations started or under way	8	0	0	0	133
134. Number of such demonstrations completed or carried through the year	8				134
135. Number of acres in these completed demonstrations	280				135
136. Total number of farms cooperating in control measures this year	20				136
137. Number of acres involved in preceding question	900				137

<sup>1</sup> States which do not organize clubs on a project basis should not report on this question but should report on enrollment and completion. 8-224

<sup>2</sup> Do not include work reported under "Cats" and "Lizards" headings.

<sup>3</sup> Indicate by name.

## LIVESTOCK.

Report only this year's extension activities and results that are recorded by county.

Item	(4)	(5)	(6)	(7)	(8)	(9) Colles. <sup>1</sup>	
	Dairy cattle	Beef cattle	Swine	Horses	Poultry		
133. Number of method demonstrations given	3	7	5	16	20	133	
139. Number of adult result demonstrations started or under way	8	10	5	27	24	139	
140. Number of adult result demonstrations completed or carried through the year	8	10	5	25	21	140	
141. Number of animals involved in these completed demonstrations	96	195	38	1100	1350	141	
142. Total profit or saving on demonstrations	\$3,000	\$5,000	\$250	\$700	\$1,000	142	
143. Number of junior clubs <sup>2</sup>	0	0	0	0	0	143	
144. Number of members enrolled	(1) Boys	19	0	25	8	47	144
	(2) Girls	7	0	5	0	131	
145. Number of members completing	(1) Boys	12		24	6	37	145
	(2) Girls	6		4		101	
146. Number of animals involved in junior club work completed	19		38	86	4638	146	
147. Number of farms assisted in obtaining purebred sires this year	6	8	4	12	18	147	
148. Number of farms assisted in obtaining high-grade or purebred females this year	7	1	0	5	16	148	
149. Number of farms culling herds or flocks for the first time	7	2	3	11	220	149	
150. Number of animals in such herds or flocks	84	30	20	460	7880	150	
151. Number of animals discarded	14	7	8	49	2940	151	
152. Number of bull, boar, ram, or stallion circles, clubs, or associations organized during the year	0	0	0	0	X X X	152	
153. Number of members in preceding circles, clubs, etc					X X X	153	
154. Number of breed associations or clubs organized during the year	0	0	0	0	0	154	
155. Number of members in these associations or clubs						155	

<sup>1</sup>Indicates by name.<sup>2</sup>States which do not organize clubs on a proper basis should not report on this question but should report on enrollment and completion.

8-5128

## LIVESTOCK—Continued.

Report only this year's extension activities and results that are supported by records.

Item.	(a) Dairy cattle.	(b) Beef cattle.	(c) Swine.	(d) Sheep.	(e) Poultry.	(f) Other. <sup>1</sup>	
156. Number of cow-testing associations organized or reorganized during the year.....	0	X X X	X X X	X X X	X X X	X X X	156
157. Number of members in these associations.....		X X X	X X X	X X X	X X X	X X X	157
158. Number of farms not in associations testing cows for production.....	4	X X X	X X X	X X X	X X X	X X X	158
159. Number of cows under test by such associations and individual farms.....	31	X X X	X X X	X X X	X X X	X X X	159
160. Number of farms adopting improved practices in the secondary production and care of milk this year.....	17	X X X	X X X	X X X	X X X	X X X	160
161. Number of farmers feeding better-balanced rations for the first time.....	34	45	50	86	220		161
162. Number of farmers controlling external and internal parasites for the first time.....	15	25	45	120	350		162
163. Number of farmers directly influenced to test animals for tuberculosis this year.....	3	0	0	X X X	0	X X X	163
164. Number of farmers directly influenced to vaccinate animals for blackleg this year.....	5	25	X X X	X X X	X X X	X X X	164
165. Number of farmers directly influenced to vaccinate swine for cholera this year.....	X X X	X X X	2	X X X	X X X	X X X	165
165a. Number of farms adopting other improved livestock practices this year. (Specify below.).....	0	0	0	30	0		165a
166. Total number of different farms adopting improved practices relative to the livestock work reported on pages 14 and 15. (Include questions 140, 145, 147, 148, 149, 153, 155, 157, 158, 160, 161, 162, 163, 164, 165, and 165a less duplications.).....	35	45	60	125	350		166
<p>165a under sheep refers to market lamb improvement work especially holding further feeding and care of under sized inferior type lambs until they are properly developed.</p>							

<sup>1</sup> Includes by name.

8-5284

## AGRICULTURAL ENGINEERING.

Report only this year's extension activities and results that are supported by records.

167. Number of method demonstrations given		2	167
168. Number of result demonstrations started or under way		4	168
169. Number of result demonstrations completed or carried through the year		4	169
170. Number of farms installing drainage systems this year	(a) Open ditches	1	170
	(b) Under drains	2	
171. Acres drained by	(a) Open ditches	65	171
	(b) Under drains	65	
172. Number of farms installing irrigation systems this year		0	172
173. Acres irrigated			173
174. Number of farms controlling erosion this year by	(a) Terraces	0	174
	(b) Soil-saving dams	8	
175. Acres on which soil erosion was so prevented by	(a) Terraces	45	175
	(b) Soil-saving dams		
176. Number of dwellings constructed this year according to plans furnished		1	176
177. Number of dwellings remodeled this year according to plans furnished		3	177
178. Number of sewage-disposal systems installed this year according to plans furnished		0	178
179. Number of water systems installed this year according to plans furnished		4	179
180. Number of heating systems installed this year according to plans furnished		0	180
181. Number of lighting systems installed this year according to plans furnished		0	181
181j. Number of farms following suggestions on maintenance and repair of machinery		12	181j
181k. Number of farms employing better types of machinery recommended by extension agent		24	181k
	(a) Cultivators	8	
181l. Number of machines involved in question 181j	(b) Plows	1	181l
	(c) Tractors and gas engines	4	
	(d) Sprayers	5	
	(e) Harvesters and threshers	0	
	(f) Other	6	
182. Number of farms on which buildings other than dwellings were constructed or remodeled this year according to plans furnished		52	182
	(a) Barns	3	
183. Number of buildings involved in preceding question	(b) Hog houses	2	183
	(c) Poultry houses	21	
	(d) Silos	2	
	(e) Other	5	
184. Number of farms clearing land of stumps or boulders this year		3	184
185. Acres of land so cleared		30	185
185j. Number of farms adopting other improved practices for the first time. (Specify below.)		0	185j
186. Total number of different farms adopting improved practices relative to the agricultural engineering work reported on this page. (Include questions 160, 170, 172, 174, 176, 177, 178, 179, 180, 181, 181j, 181k, 182, 184, and 185j less duplications.)		40	186

171 acres given are duplicated, i.e. both open and under drainage were used in the same area  
 178 Any questions of this nature are referred to the County Board of Health.

## AGRICULTURAL ECONOMICS

Report only this year's extension activities and results that are supported by records.

## FARM MANAGEMENT

187. Number of method demonstrations given.....		0	187
188. Number of farm-account books distributed this year.....		21	188
189. Number of farmers keeping records in such account books throughout the year.....		12	189
190. Number of farmers assisted in summarizing and interpreting their accounts.....		7	190
191. Number of farmers making changes in their business as result of keeping accounts.....		5	191
192. Number of other farmers adopting cropping, livestock, or complete farming systems this year according to recommendations.....		7	192
193. Number of junior farm-management clubs:		0	193
194. Number of members enrolled.....	(a) Boys.....	0	194
	(b) Girls.....	0	
195. Number of members completing.....	(a) Boys.....		195
	(b) Girls.....		
196. Number of farmers advised relative to leases this year.....		3	196
197. Number of farm-management and farm-account schools held this year.....		1	197
198. Number of farmers assisted in keeping cost-of-production records this year.....		6	198
199. Number of farms adopting other improved farm-management practices this year.....		16	199
200. Total number of different farms adopting improved practices relative to the farm-management work reported on this page. (Include questions 189, 190, 191, 192, 195, 196, 198, and 199; less duplications.).....		45	200

## CREDIT

200. Number of farm-loan or other credit associations organized this year with assistance of extension service.....		0	200
201. Membership in above associations.....			201
202. Number of other farmers assisted in obtaining credit.....		1	202

## MARKETING

203. Number of method demonstrations given.....			203
204. List below the cooperative-marketing associations organized during this year upon suggestion or with counsel of the extension service.....			204

(6) Name of association or group.	(9) Number of members.	Supplies and products handled.	Supplies purchased.		Products sold.	
			(7) Value.	(8) Bearing.	(1) Value.	(2) Profit.
<i>None</i>			\$	\$	\$	\$
<b>TOTAL</b>						

\* States which do not organize clubs on a project basis should not report on this question but should report on enrollment and completion. 2-5128

## AGRICULTURAL ECONOMICS—Continued.

Report only this year's extension activities and results that are supported by records.

205. List below this year's results in connection with the cooperative-marketing associations in the county previously organized and with which the extension service counseled or advised.

(a) Name of association or group.	(b) Number of members.	Supplies and products handled.	Supplies purchased.		Products sold.	
			(1) Value.	(2) Savings.	(3) Value.	(4) Profits.
Linsalack Market Association	183	Not listed	0		112,920	500
Sheep Wool Assn	176	Wool			21,607	2,300
TOTAL					134,527	10,800

205. Total number of different farms adopting improved marketing practices (include entries for questions 204 (a) and 205 (b) less duplications plus other farms not in cooperative associations) 260

## COMMUNITY ACTIVITIES AND MISCELLANEOUS

Report only this year's extension activities and results that are supported by records.

Use this space to include work on any other agricultural project not included in the preceding pages, such as bee-keeping, and similar work, i. e., ANY other information that can be reported statistically and that will help to give a complete account of the year's work.

Item.	50 Bookings.	50 Handled.	50 <sup>1</sup>
206. Number of method demonstrations given	0	0	206
207. Number of adult result demonstrations started or under way	0	0	207
208. Number of result demonstrations completed or carried through the year			208
209. Number of units in these completed demonstrations			209
210. Number of junior clubs <sup>2</sup>	0	0	210
211. Number of members enrolled	(1) Boys	0	211
	(2) Girls	0	
212. Number of members completing	(1) Boys		212
	(2) Girls		
213. Number of units involved in junior club work completed			213
214. Total number of different farms adopting improved practices relative to the miscellaneous work reported on this page			214

[Use space below to include other important data relating to miscellaneous work.]

Considerable advice was given in personal conference with the directors of the Farmers Exchange the no meetings of the directors were attended

<sup>1</sup> Includes some over column.<sup>2</sup> Units which do not organize clubs or groups on a project basis should not report on this question, but should report on enrollment and completion.

## HOME-DEMONSTRATION WORK.

## FOODS.

Report only this year's extension activities and results that are supported by records.

## FOOD PREPARATION.

213. Number of project clubs or groups <sup>1</sup> .....	(a) Women.....	216
	(b) Juniors.....	
214. Number of members enrolled in food preparation.....	(a) Women.....	216
	(b) Girls.....	
	(c) Boys.....	
217. Number of members completing <sup>2</sup> .....	(a) Women.....	217
	(b) Girls.....	
	(c) Boys.....	
218. Number of method demonstrations given. (See definition 6, page 2.).....		218
219. Number of result demonstrations started or under way. (See definition 6, page 3.).....	(a) Women.....	219
	(b) Girls.....	
	(c) Boys.....	
220. Number of result demonstrations completed or carried through the year.....	(a) Women.....	220
	(b) Girls.....	
	(c) Boys.....	
221. Number of individuals adopting improved practices in bread making this year.....	(a) Women.....	221
	(b) Girls.....	
	(c) Boys.....	
222. Number of individuals adopting improved practices in meat cookery this year.....	(a) Women.....	222
	(b) Girls.....	
	(c) Boys.....	
223. Number of individuals adopting improved practices in vegetable cookery this year.....	(a) Women.....	223
	(b) Girls.....	
	(c) Boys.....	
224. Number of individuals adopting improved practices in preparation of dairy-product dishes this year.....	(a) Women.....	224
	(b) Girls.....	
	(c) Boys.....	
225. Number of individuals adopting improved practices in meal preparation and service this year.....	(a) Women.....	225
	(b) Girls.....	
	(c) Boys.....	
226. Number of homes budgetting the family food supply for the first time.....		226
227. Total number of different homes adopting improved practices relative to the food-preparation work reported on this page. (Include entries for questions 220, 221, 222, 223, 224, 225, and 226 less duplications.).....		227

[Use space below to include other important data relating to food preparation.]

<sup>1</sup> Clubs which do not organize clubs or groups on a project basis should not report on this question but should report on enrollment and completion.<sup>2</sup> Exclude those who have finished the work undertaken, or each portion of it as it was planned to finish during the report year.

## FOODS—Continued.

Report only this year's extension activities and results that are supported by records.

## FOOD PRESERVATION.

226. Number of project clubs or groups <sup>1</sup> .....	(a) Women.....	} 226
	(b) Juniors.....	
228. Number of members enrolled in food preservation.....	(a) Women.....	} 228
	(b) Girls.....	
	(c) Boys.....	
230. Number of members completing.....	(a) Women.....	} 230
	(b) Girls.....	
	(c) Boys.....	
231. Number of method demonstrations given.....		231
232. Number of result demonstrations started or under way.....	(a) Women.....	} 232
	(b) Girls.....	
	(c) Boys.....	
233. Number of result demonstrations completed or carried through the year.....	(a) Women.....	} 233
	(b) Girls.....	
	(c) Boys.....	
234. Number of individuals adopting improved practices in preserving fruits and vegetables this year.....	(a) Women.....	} 234
	(b) Girls.....	
	(c) Boys.....	
235. Number of individuals adopting improved practices in preserving meats and fish this year.....	(a) Women.....	} 235
	(b) Girls.....	
	(c) Boys.....	
236. Number of homes providing better food storage for the first time.....		236
237. Total number of different homes adopting improved practices relative to the food-preservation work reported on this page.....		237
238. List below amount of food preserved by club members completing:.....		238

Kind of food.	(1) Women.	(2) Girls.	(3) Boys.
(a) Fruits and vegetables canned.....	quarts.....		
(b) Meats and fish canned.....	quarts.....		
(c) Jelly and preserves made.....	quarts.....		
(d) Fruit juices made.....	quarts.....		
(e) Pickles made.....	quarts.....		
(f) Fruits and vegetables dried.....	pounds <sup>2</sup> .....		
(g) Meats cured.....	pounds <sup>2</sup> .....		

[Use space below to include other important data relating to food preservation.]

---



---



---

<sup>1</sup> Clubs which do not organize clubs or groups on a project basis should not report on this question but should report on enrollment and completion.<sup>2</sup> Finished product.

## NUTRITION.

Report only this year's extension activities and results that are supported by records.

239. Number of project clubs or groups <sup>1</sup> .....	(a) Women.....	} 239
	(b) Juniors.....	
240. Number of members enrolled in nutrition.....	(a) Women.....	} 240
	(b) Girls.....	
	(c) Boys.....	
241. Number of members completing.....	(a) Women.....	} 241
	(b) Girls.....	
	(c) Boys.....	
242. Number of method demonstrations given.....		242
243. Number of result demonstrations started or under way.....	(a) Women.....	} 243
	(b) Girls.....	
	(c) Boys.....	
244. Number of result demonstrations completed or carried through the year.....	(a) Women.....	} 244
	(b) Girls.....	
	(c) Boys.....	
245. Number of individuals balancing family meals according to approved methods for the first time.....	(a) Women.....	} 245
	(b) Girls.....	
	(c) Boys.....	
246. Number of individuals preparing better school lunches for the first time.....	(a) Women.....	} 246
	(b) Girls.....	
	(c) Boys.....	
247. Number of schools induced to serve a hot dish or school lunch for the first time.....		247
248. Number of children involved in preceding question.....		248
249. Number of homes carrying out improved practices in child feeding for the first time.....		249
250. Number of children involved in preceding question.....		250
251. Total number of different homes adopting improved practices relative to the nutrition work reported on this page.....		251

[Use space below to include other important data relating to nutrition.]

---



---



---



---



---



---



---



---



---



---

<sup>1</sup> Clubs which do not organize clubs or groups on a project basis should not report on this question but should report on enrollment and activities.

## CLOTHING

Report only this year's extension activities and results that are supported by records.

252. Number of project clubs or groups <sup>1</sup> .....	(a) Women.....	} 252
	(b) Juniors.....	
253. Number of members enrolled in clothing work.....	(a) Women.....	} 253
	(b) Girls.....	
	(c) Boys.....	
254. Number of members completing.....	(a) Women.....	} 254
	(b) Girls.....	
	(c) Boys.....	
255. Number of method demonstrations given.....		255
256. Number of result demonstrations started or under way.....	(a) Women.....	} 256
	(b) Girls.....	
	(c) Boys.....	
257. Number of result demonstrations completed or carried through the year.....	(a) Women.....	} 257
	(b) Girls.....	
	(c) Boys.....	
258. Number of individuals adopting improved practices in selection and construction.....	(a) Women.....	} 258
	(b) Girls.....	
	(c) Boys.....	
259. Number of individuals adopting improved practices in renovation and remodeling.....	(a) Women.....	} 259
	(b) Girls.....	
	(c) Boys.....	
260. Number of individuals adopting improved practices in millinery.....	(a) Women.....	} 260
	(b) Girls.....	
	(c) Boys.....	
261. Number of individuals adopting improved practices in costume designing.....	(a) Women.....	} 261
	(b) Girls.....	
	(c) Boys.....	
262. Number of individuals adopting improved practices in infant wardrobe planning.....	(a) Women.....	} 262
	(b) Girls.....	
	(c) Boys.....	
263. Number of individuals adopting improved practices in children's wardrobe planning.....	(a) Women.....	} 263
	(b) Girls.....	
	(c) Boys.....	
264. Number of individuals adopting improved practices in adult wardrobe planning.....	(a) Women.....	} 264
	(b) Girls.....	
	(c) Boys.....	
265. Total number of different homes adopting improved practices relative to the clothing work reported on this page.....		265
266. Number of dress forms made this year by.....	(a) Women.....	} 266
	(b) Girls.....	
267. Number of dresses and coats made this year by.....	(a) Women.....	} 267
	(b) Girls.....	
	(c) Boys.....	
268. Number of undergarments made this year by.....	(a) Women.....	} 268
	(b) Girls.....	
	(c) Boys.....	
269. Number of hats made this year by.....	(a) Women.....	} 269
	(b) Girls.....	

[Use space below to include other important data relating to clothing.]

<sup>1</sup> Clubs which do not organize clubs or groups on a project basis should not report on this question, but should report on enrollment and completion.

## HOME MANAGEMENT.

Report only this year's extension activities and results that are supported by records.

270. Number of project clubs or groups <sup>1</sup> .....	(a) Women.....	270
	(b) Juniors.....	
271. Number of members enrolled in home management.....	(a) Women.....	271
	(b) Girls.....	
	(c) Boys.....	
272. Number of members completing.....	(a) Women.....	272
	(b) Girls.....	
	(c) Boys.....	
273. Number of method demonstrations given.....		273
274. Number of result demonstrations started or under way.....	(a) Women.....	274
	(b) Girls.....	
275. Number of result demonstrations completed or carried through the year.....	(a) Women.....	275
	(b) Girls.....	
276. Number of individuals following a systematized plan of household work for the first time.....	(a) Women.....	276
	(b) Girls.....	
277. Number of homes obtaining additional labor-saving equipment this year.....		277
278. Number of kitchens planned and rearranged for convenience this year.....		278
279. Number of individuals following improved laundry practices for the first time.....	(a) Women.....	279
	(b) Girls.....	
280. Number of individuals making budgets and keeping accounts for the first time.....	(a) Women.....	280
	(b) Girls.....	
281. Total number of different homes adopting improved practices relative to the home-management work reported on this page.....		281
282. List below the number of labor-saving appliances involved in question 277:		282
(a) Hand washing machines.....	(j) Kitchen cabinets.....	
(b) Power washing machines.....	(k) Electric or gasoline irons.....	
(c) Fireless cookers.....	(l) Pressure cookers.....	
(d) Kitchen sinks.....	(m) Iceless refrigerators.....	
(e) Power vacuum cleaners.....	(n) Other.....	

[Use space below to include other important data relating to home management.]

<sup>1</sup> States which do not organize clubs or groups on a project basis should not report on this question but should report on enrollment and completion.

## HOUSE FURNISHINGS.

Report only this year's extension activities and results that are supported by records.

283. Number of project clubs or groups	(a) Women	283
	(b) Juniors	
	(c) Boys	
284. Number of members enrolled in house furnishings	(a) Women	284
	(b) Girls	
	(c) Boys	
285. Number of members completing	(a) Women	285
	(b) Girls	
	(c) Boys	
286. Number of method demonstrations given		286
	(a) Women	
	(b) Girls	
	(c) Boys	
287. Number of result demonstrations started or under way	(a) Women	287
	(b) Girls	
	(c) Boys	
288. Number of result demonstrations completed or carried through the year	(a) Women	288
	(b) Girls	
	(c) Boys	
289. Number of individuals adopting improved practices in selection and arrangement of furnishings this year	(a) Women	289
	(b) Girls	
	(c) Boys	
290. Number of individuals adopting improved practices in the repairing and remodeling of furnishings this year	(a) Women	290
	(b) Girls	
	(c) Boys	
291. Number of individuals adopting improved practices in wall, woodwork, and floor treatment this year	(a) Women	291
	(b) Girls	
	(c) Boys	
292. Number of rooms involved in questions 289, 290, and 291	(a) Bedrooms	292
	(b) Living rooms	
	(c) Dining rooms	
	(d) Other rooms	
293. Total number of different homes adopting improved practices relative to the house-furnishing work reported on this page		293

[Use space below to include other important data relating to house furnishings.]

---



---



---



---



---

\* Items which do not organize clubs or groups on a project basis should not report on this question but should report on enrollment and completion.

## HOME HEALTH-SANITATION.

Report only this year's activities and results that are supported by records.

284. Number of project clubs or groups	(a) Women	} 284
	(b) Juniors	
285. Number of members enrolled in home health and sanitation	(a) Women	} 285
	(b) Girls	
	(c) Boys	
286. Number of members completing	(a) Women	} 286
	(b) Girls	
	(c) Boys	
287. Number of method demonstrations given		287
288. Number of result demonstrations started or under way	(a) Women	} 288
	(b) Girls	
	(c) Boys	
289. Number of result demonstrations completed or carried through the year	(a) Women	} 289
	(b) Girls	
	(c) Boys	

## HEALTH.\*

290. Number of homes adopting recommended health practices this year		300
291. Number of individuals adopting recommended practices in--		301
(a) Use of health score card	(f) Care of skin and hair	
(b) Good posture	(g) Home nursing	
(c) Prevention of colds	(h) First-aid	
(d) Good elimination	(i)	
(e) Care of teeth	(j)	

292. Is your health program coordinated with the work of State and county health authorities?	(a) Yes	} 302
	(b) No	

## SANITATION.

293. Number of homes installing sanitary closets or outhouses this year according to plans furnished		303
294. Number of homes screened for the first time		304
295. Number of homes following other methods of controlling flies, mosquitoes, and other insects for the first time		305
296. Total number of different homes adopting improved practices relative to the sanitation work reported on this page		306

[Use space below to include other important data relating to home health and sanitation.]

---



---



---



---



---



---



---



---

\* States which do not organize clubs or groups on a project basis should not report on this question but should report on enrollment and completion.  
 \* It is assumed that this work is conducted in cooperation with State and county health authorities.

**AGRICULTURAL ENGINEERING—HOME**

Report only this year's extension activities and results that are supported by records.

Do not list information which has been previously reported on page 25.

307. Number of method demonstrations given.....	307
308. Number of result demonstrations started or under way.....	308
309. Number of result demonstrations completed or carried through the year.....	309
310. Number of dwellings constructed this year according to plans furnished.....	310
311. Number of dwellings remodeled this year according to plans furnished.....	311
312. Number of sewage-disposal systems installed this year according to plans furnished.....	312
313. Number of water systems installed this year according to plans furnished.....	313
314. Number of heating systems installed this year according to plans furnished.....	314
315. Number of lighting systems installed this year according to plans furnished.....	315
316. Number of poultry houses constructed this year according to plans furnished.....	316
317. Total number of different homes adopting improved practices relative to the agricultural engineering work reported on this page.....	317

[Use space below to include other important data relating to agricultural engineering.]

**BEAUTIFICATION OF HOME GROUNDS**

Report only this year's extension activities and results that are supported by records.

Do not list information which has been previously reported on page 12.

318. Number of project clubs or groups.....	(a) Women.....	} 318
	(b) Juniors.....	
319. Number of numbers enrolled in beautification of home grounds.....	(a) Women.....	} 319
	(b) Girls.....	
	(c) Boys.....	
320. Number of members completing.....	(a) Women.....	} 320
	(b) Girls.....	
	(c) Boys.....	
321. Number of method demonstrations given.....		321
322. Number of result demonstrations started or under way.....	(a) Women.....	} 322
	(b) Girls.....	
	(c) Boys.....	
323. Number of result demonstrations completed or carried through the year.....	(a) Women.....	} 323
	(b) Girls.....	
	(c) Boys.....	
324. Number of home grounds planted this year according to a landscape plan.....		324
325. Number of school and community grounds planted this year according to a landscape plan.....		325
326. Number of homes painted or whitewashed this year as a result of instruction in beautification.....		326
327. Total number of different homes beautifying home grounds this year.....		327

[Use space below to include other important data relating to beautification of home grounds.]

\* Clubs which do not organize clubs or groups on a project basis should not report on this question but should report on enrollment and completion.

## HOME GARDENS.

Report only this year's extension activities and results that are supported by records.  
Do not list information which has been previously reported on page 12.

328. Number of project clubs or groups <sup>1</sup> .....	(a) Women.....	328
	(b) Juniors.....	
329. Number of members enrolled in home gardens.....	(a) Women.....	329
	(b) Girls.....	
	(c) Boys.....	
330. Number of members completing.....	(a) Women.....	330
	(b) Girls.....	
	(c) Boys.....	
331. Number of method demonstrations given.....		331
332. Number of result demonstrations started or under way.....	(a) Women.....	332
	(b) Girls.....	
	(c) Boys.....	
333. Number of result demonstrations completed or carried through the year.....	(a) Women.....	333
	(b) Girls.....	
	(c) Boys.....	
334. Number of gardens involved in result demonstrations.....	(a) Women.....	334
	(b) Girls.....	
	(c) Boys.....	
335. Number of individuals adopting improved practices in growing fruit trees this year.....	(a) Women.....	335
	(b) Girls.....	
	(c) Boys.....	
336. Number of individuals adopting improved practices in growing bush and small fruits this year.....	(a) Women.....	336
	(b) Girls.....	
	(c) Boys.....	
337. Number of individuals adopting improved practices in growing grapes this year.....	(a) Women.....	337
	(b) Girls.....	
	(c) Boys.....	
338. Number of individuals adopting improved practices in growing vegetables this year.....	(a) Women.....	338
	(b) Girls.....	
	(c) Boys.....	
339. Number of individuals saving improved stock or seed for the first time.....	(a) Women.....	339
	(b) Girls.....	
	(c) Boys.....	
340. Number of homes spraying or otherwise treating garden crops for diseases and insect pests for the first time.....		340
341. Number of individuals growing winter gardens for the first time.....	(a) Women.....	341
	(b) Girls.....	
	(c) Boys.....	
342. Total number of different homes adopting improved practices relative to the home-garden work reported on this page.....		342

[Use space below to include other important data relating to home gardens.]

<sup>1</sup> Clubs which do not organize clubs or groups on a project basis should not report on this question but should report on enrollment and completion.

## HOME POULTRY.

Report only this year's extension activities and results that are supported by records.

Do not list information which has been previously reported on pages 14 and 15.

343. Number of project clubs or groups	(a) Women	343
	(b) Juniors	
344* Number of members enrolled in home poultry	(a) Women	344
	(b) Girls	
	(c) Boys	
345. Number of members completing	(a) Women	345
	(b) Girls	
	(c) Boys	
346. Number of method demonstrations given		346
347. Number of result demonstrations started or under way	(a) Women	347
	(b) Girls	
	(c) Boys	
348. Number of result demonstrations completed or carried through the year	(a) Women	348
	(b) Girls	
	(c) Boys	
349. Number of birds in result demonstrations raised or managed by	(a) Women	349
	(b) Girls	
	(c) Boys	
350. Total profit on result demonstrations conducted by	(a) Women	350
	(b) Girls	
	(c) Boys	
351. Number of individuals culling flocks for the first time	(a) Women	351
	(b) Girls	
	(c) Boys	
352. Number of homes culling flocks for the first time		352
353. Number of birds in these flocks		353
354. Number of birds discarded		354
355. Number of homes feeding better-balanced poultry rations for the first time		355
356. Number of individuals assisted in obtaining standard-bred eggs for hatching this year	(a) Women	356
	(b) Girls	
	(c) Boys	
357. Number of homes assisted in obtaining standard-bred cockerels this year		357
358. Number of individuals adopting improved practices in early hatching and chick rearing this year	(a) Women	358
	(b) Girls	
	(c) Boys	
359. Number of homes directly assisted in increasing the family income this year through poultry		359
360. Number of homes controlling poultry insects for the first time		360
361. Total number of different homes adopting improved practices relative to the home-poultry work reported on this page		361

[Use space below to include other important data relating to home poultry.]

\* Clubs which do not organize clubs or groups on a project basis should not report on this question, but should report on enrollment and membership.

## HOME DAIRY.

Report only this year's extension activities and results that are supported by records.  
Do not list information which has been previously reported on pages 14 and 15.

362. Number of project clubs or groups <sup>1</sup> .....	(a) Women .....	362
	(b) Juniors .....	
363. Number of members enrolled in home-dairy work .....	(a) Women .....	363
	(b) Girls .....	
	(c) Boys .....	
364. Number of members completing .....	(a) Women .....	364
	(b) Girls .....	
	(c) Boys .....	
365. Number of method demonstrations given .....		365
366. Number of result demonstrations started or under way .....	(a) Women .....	366
	(b) Girls .....	
	(c) Boys .....	
367. Number of result demonstrations completed or carried through the year .....	(a) Women .....	367
	(b) Girls .....	
	(c) Boys .....	
368. Number of cows or calves in result demonstrations raised or managed by .....	(a) Women .....	368
	(b) Girls .....	
	(c) Boys .....	
369. Number of homes feeding better dairy rations for the first time .....		369
370. Number of homes adopting better practices in the sanitary production and care of milk this year .....		370
371. Number of homes adopting better practices in butter or cheese making this year .....		371
372. Number of pounds of butter made .....		372
373. Number of pounds of cheese made .....		373
374. Total number of different homes adopting improved practices relative to the home-dairy work reported on this page .....		374

[Use space below to list other important data relative to home dairying.]

---



---



---



---



---



---



---



---

<sup>1</sup> States which do not organize clubs or groups on a project basis should not report on this question but should report on enrollment and completion.

## HOME MARKETING.

Report only this year's extension activities and results that are supported by records.

Do not list information which has been previously reported on pages 17 and 18.

375. Number of method demonstrations given \_\_\_\_\_ 375

376. List below the cooperative-marketing associations organized during this year upon suggestion and counsel of the Extension Service. \_\_\_\_\_ 376

(a) Name of association or group.	(b) Number of members.	Products sold.		Supplies purchased.	
		(c) Value.	(d) Profit.	(e) Value.	(f) Savings.
Curb or bazaar markets.		\$	\$	\$	\$
Egg circles.					
TOTAL.					

377. List below this year's results in connection with the cooperative-marketing associations in the county previously organized and with which the Extension Service contacted or advised. \_\_\_\_\_ 377

(a) Name of association or group.	(b) Number of members.	Products sold.		Supplies purchased.	
		(c) Value.	(d) Profit.	(e) Value.	(f) Savings.
Curb or bazaar markets.		\$	\$	\$	\$
Egg circles.					
TOTAL.					

378. Number of homes standardizing and grading products for markets: \_\_\_\_\_ 378

(a) Poultry and poultry products. \_\_\_\_\_ (d) Fruits and vegetables \_\_\_\_\_

(b) Canned goods. \_\_\_\_\_ (e) \_\_\_\_\_

(c) Dairy products. \_\_\_\_\_ (f) \_\_\_\_\_

379. Total number of different homes adopting improved marketing practices (include entries for questions 376 (b) and 377 (b) less duplications plus other homes not in cooperative associations) \_\_\_\_\_ 379

[Use space below to list the principal products handled in cooperative marketing associations reported above.]

---



---



---



---



---



---

## COMMUNITY ACTIVITIES AND MISCELLANEOUS—HOME.

Report only this year's extension activities and results that are supported by records.

Do not list information which has been previously reported on page 18.

Use this page to include work on any other home-economics project not included in the preceding pages, such as rug making, basket making, other handicraft, and similar work, i. e., any other information that can be reported statistically and that will help to give a complete account of the year's work.

Item	(1) <sup>1</sup>	(2) <sup>2</sup>	(3) <sup>2</sup>
379. Number of project clubs or groups <sup>1</sup>	(a) Women		379
	(b) Juniors		
380. Number of members enrolled	(a) Women		380
	(b) Girls		
	(c) Boys		
381. Number of members completing	(a) Women		381
	(b) Girls		
	(c) Boys		
382. Number of method demonstrations given			382
383. Number of result demonstrations started or under way	(a) Women		383
	(b) Girls		
	(c) Boys		
384. Number of result demonstrations completed or carried through the year	(a) Women		384
	(b) Girls		
	(c) Boys		
385. Number of units involved in such result demonstrations	(a) Women		385
	(b) Girls		
	(c) Boys		
386. Total number of different homes adopting improved practices relative to the miscellaneous work reported on this page			386
[Use space below to include other important data relating to miscellaneous work.]			

<sup>1</sup> Indicate name over column.<sup>2</sup> State which do not organize clubs or groups on a project basis should not report on this question but should report on enrollment and completion.