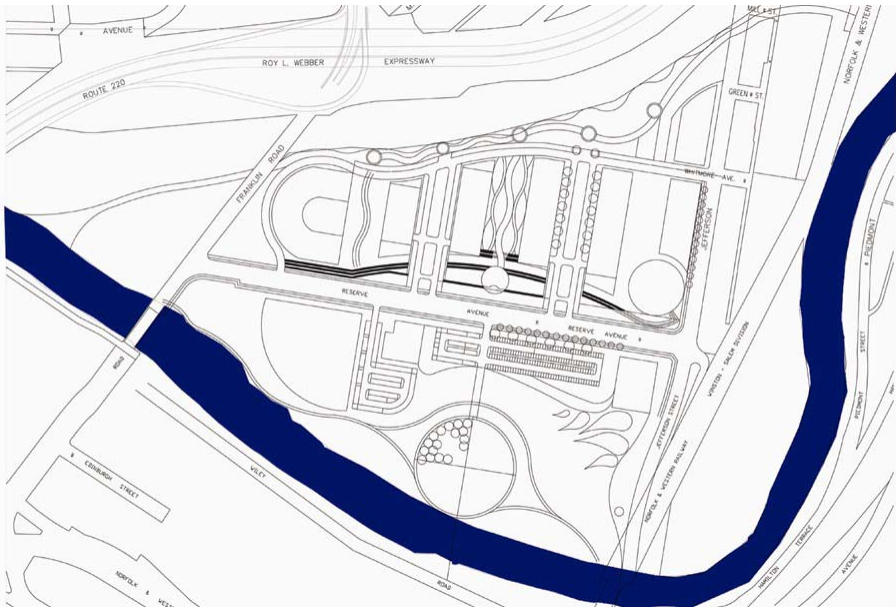
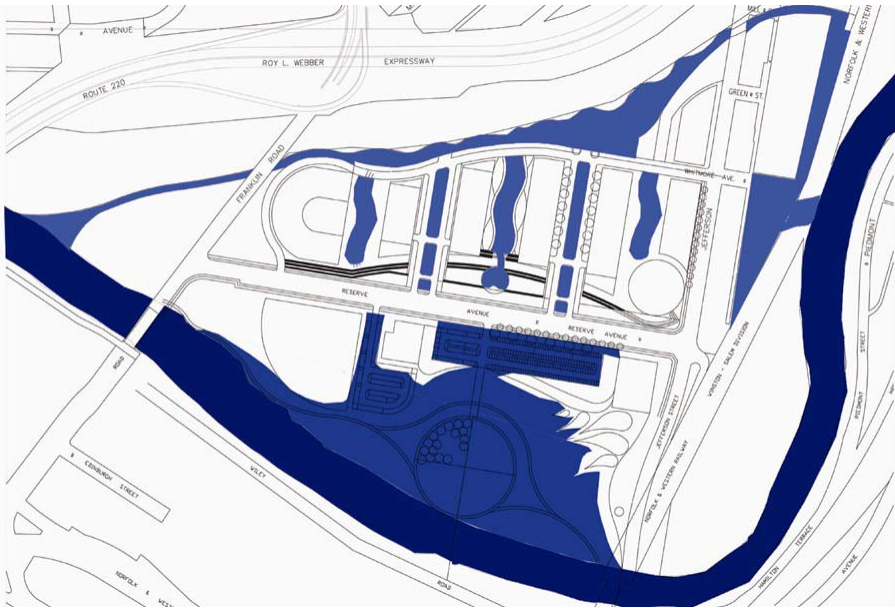


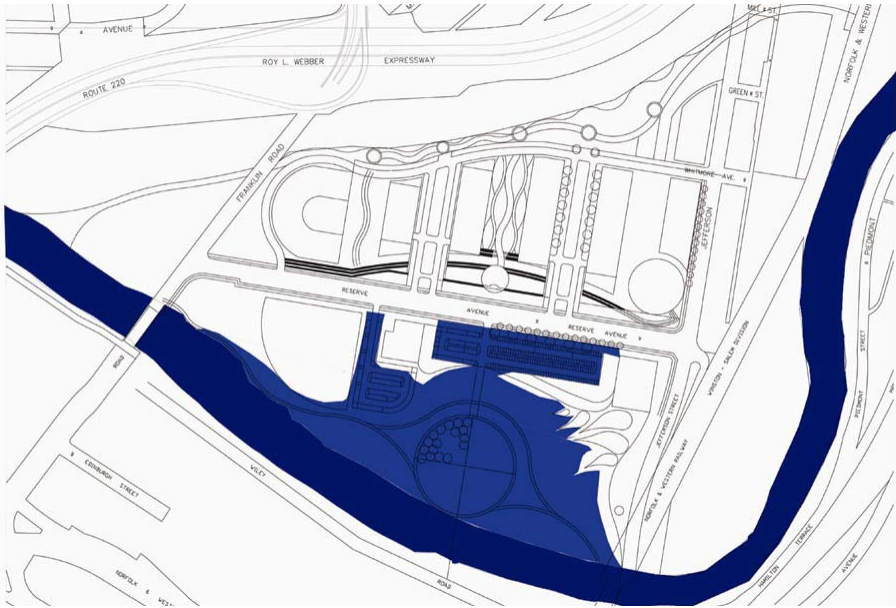
Fig 8.36: Change model, Option I, during flood event



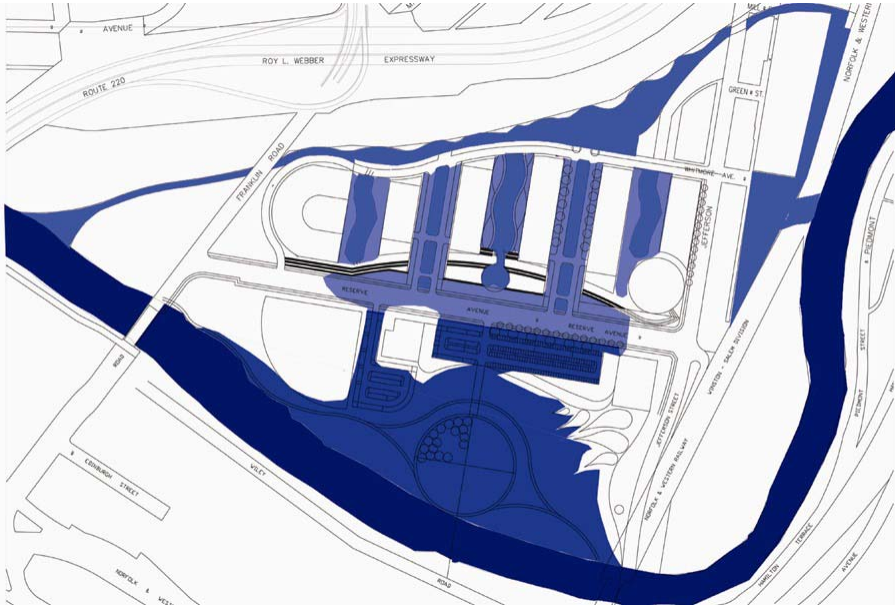
Condition I: Full bank situation:



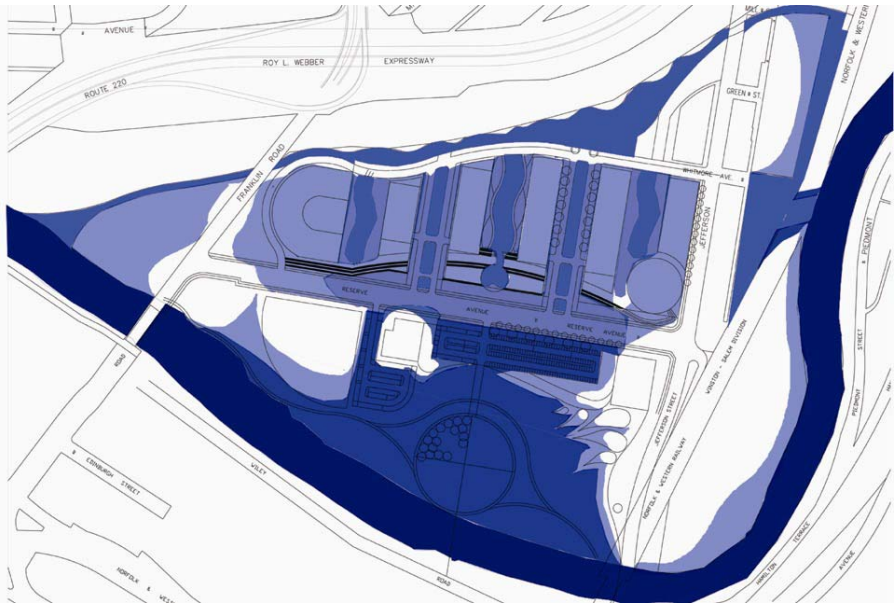
Condition II: 5' above full bank situation:



Condition IV: Less than 8' above full bank situation



Condition V: Less than 10' above full bank situation



Condition VI: 10' above full bank situation

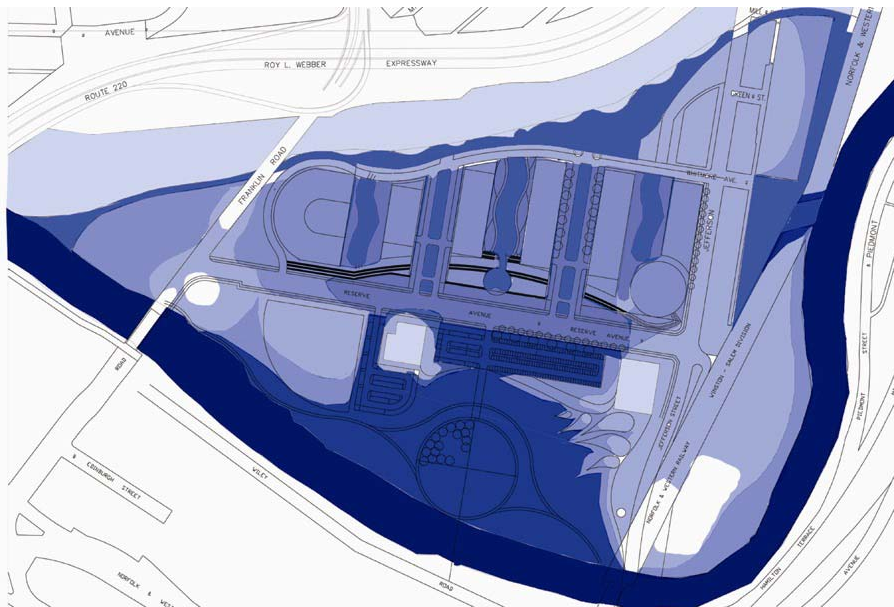
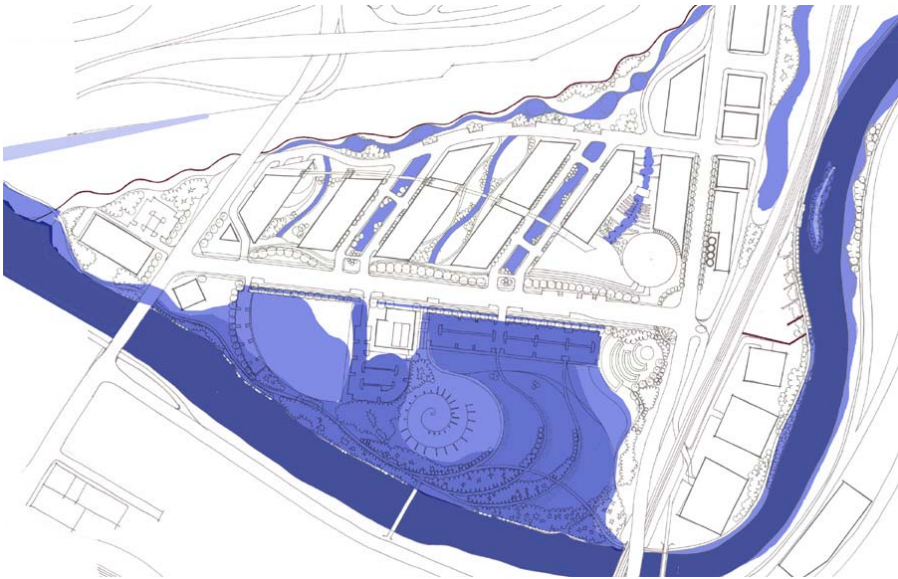




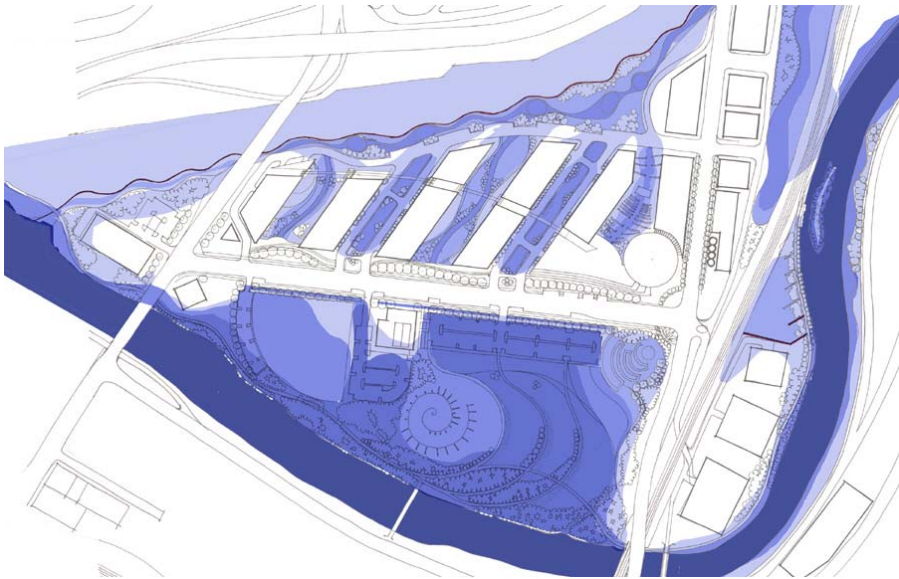
Fig 8.37: Change model, Option II, during flood event



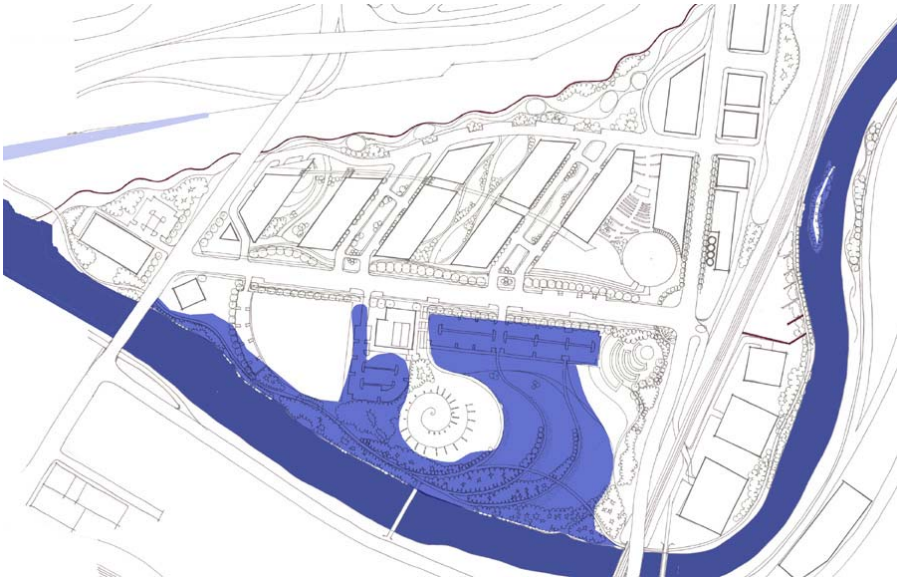
Condition I: Full bank situation:



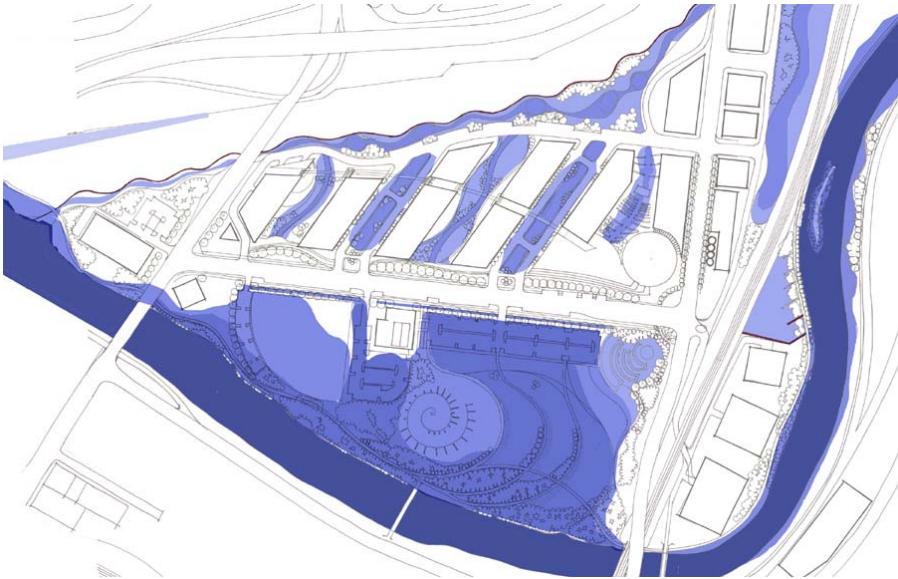
Condition III: Less than 6' above full bank situation



Condition VI: 10' above full bank situation



Condition II: 5' above full bank situation:



Condition IV: Less than 8' above full bank situation