

# VIRGINIA

PRINCE EDWARD COUNTY

HOME DEMONSTRATION ANNUAL REPORT

1932

Index	Page
1 e 3,1042	Curb and other markets ..... 15, 18
1 d 1,7	Community rest room ..... 3
1 d 2	Community clubs ..... 9-19, 19-20
1 d 7	Relief work ..... 18-19
6 h 1,352	Junior short course ..... 29-30
6 h 2,8114	Horticulture feature story (home garden) .. 13-14
6 h 2,8212	Home improvement feature story (girl's room) 23-24
9 a	Contests (baking) ..... 3-5

2

ANNUAL NARRATIVE REPORT  
HOME DEMONSTRATION WORK  
PRINCE EDWARD COUNTY  
VIRGINIA

1932

Courtney Farrar

Home Demonstration Agent

December 1, 1931 - November 30, 1932

HOME DEMONSTRATION AGENT ANNUAL REPORT

## TABLE OF CONTENTS

I.	Cover and Title Page	
II.	Table of Contents.	
III.	Personal Report Summary .....	1
IV.	Status of County Extension Organization .....	2
	1-a- Board of Supervisors.....	2
	b- County School Board.....	2
	2-(1)-a- County Advisory Board.....	2
	b- County Federation.....	2
	(2)-a- Community Rest Room.....	3
	b- Baking Contest.....	3-4- 5
	b- 4-H Club Council.....	5
	(1)- Function of Council.....	5
	(2)- Program of work.....	6
	(3)- Narrative of Council.....	7
	3. Relations with other organizations.....	7
V.	1. Program of Work.....	7
	(a) Map of County.....	8
	(b) Home Demonstration Clubs.....	9-10
	(c) 4-H Community Clubs.....	10

2.-Women's Work.....	10
(a) Work of Advisory Board.....	10-11
(b) Program of Work 1932.....	11
(c) Formation of Program.....	11
(d) Homemakers in County.....	11
(e) Enrollment for past two years.....	12
(f)-(a)-Foods.....	12-13
(b)-Child Training & Care.....	13
(c)-Clothing.....	13
(d)-Home Management.....	13
(e)-House Furnishings.....	13
(f)-Home Health & Sanitation.....	13
(g)-Home Gardens.....	13-14
(h)-Beautification of Grounds.....	14
(i)-Home Poultry.....	14
(j)-Home Marketing.....	14-15
(k)-Community Activities.....	15-16
(g)-Leader Training Story.....	16
(i)-State Homemakers Association.....	17

(j)-(1)-Fairs.....	17
(2)-Achievement Day.....	17-18
(3)-Tour.....	18
(k)-Market Work.....	18
(l)-Relief Work.....	18-19
(m)-County-wide work.....	19
(n)-Program of Best Club.....	19-20
(o)-Special Canning Contest.....	20-21
(p)-Recreation.....	21

2.-Girls Work

(a)-Girls of Club Age in County.....	21
(b)-Enrollment for last five years.....	21
(c)-Years in Club work and age of members.....	22
(d)-Project Activities	
(a)-Project groups and enrollment.....	22
(b)-Activities of Worsham Club.....	22
Activities of Prospect Club.....	23
(c)-Story of Work.....	23-24
(e)-Work for older girls.....	24
(f)-Leader Training.....	25

(a)-Story of Leader's Work.....	25
(g)-4-H Club Activities.....	25
(a)-Club Meetings.....	25-26
(b)-Prospect 4-H Community Club.....	26-27
(h)-Special Events	
(a)-(1)-County Rally.....	27-28
(2)-Achievement Day.....	28
(3)-Community Clubs Achievement Days	28
(b)-Contest.....	29
(i)-Hamden Sydney District Short Course..	29-30
(j)-All Star Chapter.....	30
(k)-Leaders Organization.....	30
(l)-Recreation.....	30
VI.-Financial Statement of Value of Work.....	30-31
VII.-Evidence of Progress.....	31
VIII.-Summary of year's work.....	32-33
Plans and Goals for 1933.....	33-34
Appendix - Picture.....	35

## III. PERSONAL REPORT SUMMARY

Days in field .....	184
Days in office .....	97
Days annual leave .....	11
Days sick leave .....	9
Days leave without pay .....	0
Legal holidays taken .....	5
Number farm or home visits made (adult) .....	401
Number 4-H club demonstrations visited .....	53
Total number different farms or homes visited .....	369
Office calls .....	475
Telephone calls .....	369
Number news articles or stories prepared for press ..	299
Number individual letters written .....	626
Number different circular letters prepared .....	20
Number of miles traveled .....	10,181

#### IV. STATUS OF COUNTY ORGANIZATIONS.

##### 1 -a- Board of Supervisors.

Two County Organizations not organized by the Agent and supporting Home Demonstration work are the County Board of Supervisors and the County School Board. The County Board of Supervisors is composed of six men representing the six magisterial districts. The Board of Supervisors support the work by making a yearly appropriation for the Home Demonstration Agent's salary.

##### b- County School Board.

The County School Board supports Home Demonstration work by making an appropriation for the Agent's salary and by giving Club work time to be carried on in School.

##### 2- a- County Advisory Board.

- (1) -a- The County Home Demonstration Advisory Board is an organization composed of twelve representative women from the six districts. The Advisory Board is an organization that meets twice a year, March and November, for the purpose of working in co-operation with the Extension Division and the Home Demonstration Agent in planning and putting into effect a County Home Demonstration program. The members are: The presidents of all Home Demonstration Clubs, officers of County Federation and one woman from each district appointed by her Supervisor.

##### County Federation

-b- The County Federation of Home Demonstration Clubs meets semi-annually. The women were very anxious to vary their spring meeting this year, so a committee was appointed to decide what, when and where, and work out the details. This committee decided to visit Historic Brems on Wednesday during Better Homes Week.

On April 27th, twenty six men and women from Prince Edward County made a tour to upper Brems. Miss Sally Guy Davis, District Agent, accompanied the party. We saw three historic homes, Brems, Lower Brems and Recess. These three homes were originally owned by the Copke

W

Family. The 15,000 acres on the James River being an original grant from the king.

(2) a- Community Rest Room

The Home Demonstration Advisory Board for Prince Edward County fostered a Community Rest Room.

This Rest Room was made possible in 1926 through the support of the Town Council, Board of Supervisors and the American Legion. The number of people using the Rest Room has grown steadily until this year there were 10,000 registered. People have stopped there from every State in the Union but three, also Canada and Honolulu. Mothers coming into Farmville shopping leave their babies with the matron and know that they will be well cared for. The matron has left in her charge from twelve to fifteen babies each week.

The Rest Room is indispensable to the comfort of the people of the surrounding counties as well as Prince Edward. It is known and discussed through out the state. A woman from Petersburg and one from Philadelphia came this summer to see how we got ours started and how it was run.

b- Baking Contest

The County Advisory Council at their spring meeting decided to sponsor a Baking Contest for the County this year. The rules and regulations were to be made by Miss Janet Cameron, State Food Specialist, Miss Sally Guy Davis, District Agent and Miss Courtney Farrar, County Home Demonstration Agent.

The following was decided upon.

Object

To raise the standards of home baking.

3

Regulations

1- Each Contestant must be a member of a Home Demonstration Club, or connected with the co-organization.

2- Each Contestant must participate in a judging contest prior to Achievement Day.

Contestants may enter

a- One loaf of yeast bread.

b- Plain cake with either chocolate or caramel icing.

3- Prizes will be awarded the several best in each class, to be judged by the following score-

SCORE CARD

CAKES

General Appearance color & shape	-----	15
Crust	-----	05
Flavor odor, taste	-----	30
Texture lightness - holes	-----	50

YEAST BREAD

General Appearance color, shape, size.	-----	10
Crust soft, even brown	-----	10
Crumb lightness, color, even texture	-----	30
Flavor odor, taste	-----	50

Prior to Achievement Day each Club had a

4

judging contest. Each woman present was given a score sheet and they did the judging. When they had finished, I judged and they compared their score with mine. Several ladies told me that they learned more about cakes and yeast breads from these meetings, than from seeing a demonstration. The contest closed with Achievement Day. Fifteen cakes and six loaves of bread were exhibited. Miss Cameron did the judging, and was very complimentary of the products exhibited. The prizes were somewhat equally distributed throughout the County.

b.- 4-H Club Council

- (1) - 4-H Club Council was organized in the Spring of last year. The membership of the Council is composed of the officers of the five 4-H Clubs of the County. This organization meets twice a year. It's purpose is to work in co-operation with the Farm and Home Agents in planning and putting into effect a County 4-H Club program.
- 5

PROGRAM

Work to be done	Work Accomplished
1-Each club to have 12 meet- in gs. a definite program made in advance.	1- Most of the Clubs had 12 meetings, with programs made in advance.
2-Each club to resume responsi- bility of collecting and de- livering to County Farm and Home Agents it's record books.	2- 85% of record books collected and turned in.
3-Each club to set as their goal a definite demonstra- tion for each member and 100% complete records.	3- Each member had a demonstration, 85% completed records.
4-Each club to have a local picnic.	4- Picnic held.
5-Hold County Rally	5- County Rally at Hampden Sydney in August.
6-Each club have at least two representatives at District Short Course to be held at Hampden Sydney and one repre- sentative at State Short Course to be in Blacksburg. This representative to be a club member for the following year.	6- 4 Clubs had representatives at Dis- trict Short Course - one Club had representative at State Short.
7-A County wide competition for best club. This to be deter- mined at Achievement Day.	7- Competition held - Prospect Club given banner at Achievement Day.
8-Hold County wide Achievement Day.	8- Achievement Day held.

6

(3) At the meeting of the 4-H Club Council in May several members were present, also Mr. G. A. Elcan, State Boys Club Agent, E. F. Striplin, County Agent and Courtney Farrar, Home Demonstration Agent. Mr. Elcan talked to the members about goals and told them of several that some of the other counties had adopted. The Club members then adopted the goals given above. The goals were printed and each Club given a copy. They were read at several of the Club meetings in an effort to keep them before the Clubs so that they each would help to carry them out.

The Council held three meetings this year. At their meeting in October the County Agent and I gave them a party. The business meeting was held first, at which time they made plans for their Achievement Day. We next played games and had several contests, after which we served them refreshments. The Leaders were all present. On their individual cakes we had lighted candles for the number of years they had been Leader. We had the best attendance for this meeting of any held during the year.

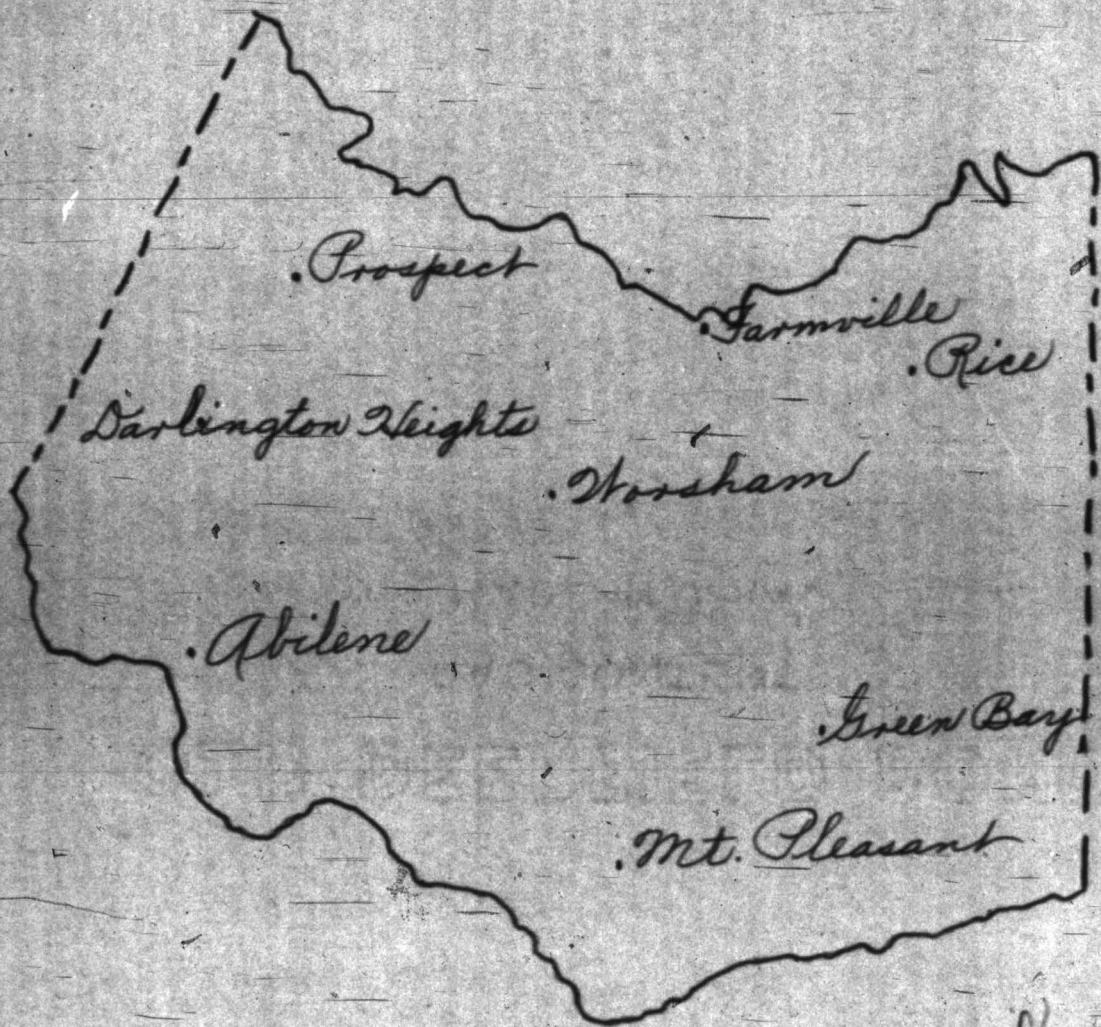
3.-

In the work by the Community Rest Room, we are associated with Board of Supervisors, Town Council, American Legion and Lion's Club. We are in contact with the County School Board, through the Club meetings in the various schools of the County.

#### V. PROGRAM OF WORK

1. a- Map of County





8

b- Home Demonstration Clubs:

Prince Edward County has six Home Demonstration Clubs, namely: Sunshine Club, the oldest club in the County, organized ten years ago with five members, and today it has a membership of eleven. This Club has held twelve meetings for the year. This Club built a Community House three years ago and has made several improvements this year. Last year they added a kitchen with equipment and lights. This year they painted it inside and out. This house is the meeting place for the Sunshine Club, the Grange and takes care of the overflow in the Sunday School. It is meeting the need in a community that did not have a meeting place.

Thrift Club has eighteen members, three of which have joined the Club this year. They have had twelve very interesting and well attended meetings for the year. This Club has been outstanding in its work with the poor and needy. They are giving them food and clothing and helping to make what they get from the Red Cross.

The Social Hour Club has a membership of fourteen, two members coming into the Club this year for the first time. They have held twelve meetings during the year. This is a congenial group of women that get a great deal of pleasure out of meeting and working together.

The Darlington Heights Woman's Club is composed of eleven members. Twelve meetings were held during the year. This Club has been working with the Community League in helping to beautify their School grounds. Club work means a lot to this Community but this year several ladies were unable to attend for various reasons. This Club is also helping the poor and needy.

The Green Bay Home Demonstration Club was organized last year in November with a membership of ten. They now have thirteen members on roll, and had twelve very interesting meetings for the year. This community is getting more help from the Red Cross than any other section in the County. The Club is helping to cut and

9

make garments for the needy.

A new Home Demonstration Club was organized last month at Prospect, making six in the County. This Club has a membership of ten, but am sure it will grow rapidly as so many women around the community are so interested.

(c)- 4-H Community Clubs:

There are five 4-H Community Clubs in the County with an enrollment of 237. of this number 135 are girls.

The Darlington Heights 4-H Club has fifty-nine members on roll and has held ten meetings for the year. Two other meetings were planned but were not held.

The Green Bay 4-H Community Club has forty-nine members on roll. Nine meetings have been held for the year. This Club planned a picnic and held same at Willis Mountain.

Prospect 4-H Community Club has thirty-four on roll and have held twelve meetings for the year. An All Star Club Girl, Mildred Wilkerson, is a very enthusiastic leader for this Club. This Club won the banner offered for the best Club in the County.

Rice 4-H Community Club has thirty-six members and has held eight meetings for the year. This Club made \$2.00 and gave a George Washington picture to their school.

Worsham 4-H Community Club has a membership of forty-two. They have held twelve meetings for the year. Gaynell Walthall, an All Star Club Girl, is leader for this Club. This Club came second in the contest for the banner.

2. Women's Work:

a. Work of Advisory Board.

The County Advisory Council met the second Wednesday in November of 1931 to plan the program of work for the County for 1932. Every member being present but two. A report

10

of the work accomplished during 1931 was given by the Home Demonstration Agent, as some what of a back ground for the coming year. Miss Sally Guy Davis, District Agent was present and outlined the different projects available to the Clubs for 1932. These projects were discussed fully along with the conditions of the County. Mrs. W. E. Chappell, County Garden Demonstrator told of the many things she had learned through her garden work and of the need for better gardens through out the County. This led to a discussion of better foods so that when the vote came it was unanimous for foods.

b- Program of Work for 1932

December - Election of offices and planning work for individual Clubs.  
January - Foods - "More Fruits in the Diet".  
February - Foods - "Meats and meat substitutes".  
March - Foods - "Salads"  
April - Foods - "New ways to serve vegetables".  
May - Labor Saving Devices.  
June - Foods - "Desserts, New Healthful & Simple".  
July - Foods - "Cakes and social Dishes".  
August - Club Picnics  
September- Judging Cakes & Yeast breads.  
October - Achievement Programs.  
November - Social Programs.

The Clubs of the County were also to take part in the Baking Contest: State Canning Contest: Rally Day and Achievement Day.

c- Prince Edward County has been rather hard hit for the past three years, by terrible droughts. All over the County people are talking "Better and Larger Gardens", the raising of more foods, and living more economically. This being the prevailing conditions, lead to the formation of such a program.

d- There are nine hundred white Farm Homemakers in Prince Edward County. Five hundred of these have been reached directly and about two hundred and fifty others indirectly.

11

Year:	Members		Increase		Clubs		Increase	
	Total Number:	No.:	Percent:	Total No.:	No.:	Percent		
1931:	75	21	28	5	1	20		
1932:	77	2	2 2/3	6	1	162/3		

f- (a)- Foods

Prince Edward County took Foods for its major project for this year. The women are feeling the depression and felt that they could not afford to buy furnishings for their home, then too the conditions were such that they wanted to know more about preparing and serving home grown foods.

The five Home Demonstration Clubs of the County have had seven of their twelve meetings of the year devoted to some phase of food.

At the January meeting each Club took "More Fruits in the Diet".

The February meeting was "Meats and Meat substitutes".

The March meeting was "Salads".

The April meeting was "New ways of serving vegetables".

The June meeting was "Desserts, new healthful and simple".

The July meeting was "Cakes and Social Dishes".

The September meeting was "Judging cakes & yeast breads".

In the food work the women reported --

- 61 members planning well balanced meals
- 65 homes having gardens
- 47 homes enlarging the gardens for 1932

In the Food preservation work the women canned 3077 quarts of fruits, 1838 quarts of vegetables, 749 quarts of meats and 1278 quarts of other products. This added together is 6,942 quarts - for

W

the drought conditions in Prince Edward this is remarkable. This at very conservative figures means a saving of \$1932.20 to the women of Prince Edward County.

Four pressure cookers were bought this year.

- (b) - No work.
- (c) - Clothing was not taken by any Clubs in the County, still the Agent has given numerous suggestions in making over garments.
- (d) - Home management was taken as a minor by the women: They report the following -- seventy-three rearranged their kitchens for convenience - forty-three homes obtained labor saving equipment - while five homes kept account of their expenditure.
- (e) - The work started last year in house furnishings and not completed has been given individual help by the Agent from time to time.
- (f) - No Work.
- (g) - Mrs. J. A. LeSueur had the best garden in Prince Edward County for this year, this is her story --

#### GARDEN RECORD

Tillage: In February we plowed our garden, then worked the soil until it was well pulverized. After planting we continued with frequent and shallow cultivation.

Fertilization: We used Baugh's Truck Guano 4-12-4 and Chilean Nitrate of Soda.

Aim in Planting: Our aim in planting is to have enough vegetables to supply our table in season and out of season and to have a small supply for sale.

Planting: In February we sowed seeds in hot beds. In

March we planted English Peas, Lettuce, Onions, Potatoes, Beets, Rape; and under canvass sowed tomato, cabbage, pepper, and radish seeds. In April we planted corn, cucumbers, okra, snap beans, lima beans, English peas, black-eyed peas, beets, carrots, parsnips, radish and squash. In May we begin to set our plants into the garden, such as peppers, sweet potatoes, tomatoes, etc. In June we make a second planting for later vegetables, and sow our seeds for late tomatoes. We start our fall garden in August by planting carrots, six-weeks snaps, beets, turnips, radish, rape and lettuce.

Preservation: Canning and Storage: My method in canning is to use a pressure cooker, Virginia Canning Bulletin No. 128, 1932, method, and can vegetables immediately after gathering. I can enough for my budget, then some extra for I give some at Christmas and carry some when I visit the sick.

Profit: After supplying our table and canning enough for our family for out of season vegetables, we have sold from our one-half acre garden \$40.00 worth of vegetables on our club market.

Interest: Our garden has created much interest at the Club market, and among our neighbors. On one occasion we had 13 neighbors visiting it, and at other times, 26. In a sense it has been a demonstration garden."

(h)- Individual help given with the planting of native shrubs.

(i)- Poultry is one of the best sources of income in Prince Edward County. Altho poultry products have been low this year I have heard several women say, that their flock has fed the family. Four new poultry houses have been built this year.

(j)- Home Marketing-  
Several ladies of the County sold on the Club Market at different times throughout the summer, five selling regularly. The Market has

14

had a very keen competition this year with people selling on the Streets that never sold before. Regardless of this, the sales for the year amounted to \$831.28. One lady that sold on the Club Market has built herself up quite a reputation with her cakes here in Farmville. She sells as many as ten some weeks.

The country woman's thought in going to market, is just the opposite of that of her town or city sister. The town woman goes to market with the interest to find food (usually) for her household and to find it at the lowest cost possible for a good article, suited to her needs. The country woman goes to market to find sale for such articles as she can produce in her home, garden or farm and to get in return the most she can to repay her for her work.

So, we find a Club Market a most interesting place and such was the market that was held through the summer and early fall in Farmville, Virginia. It opened the first of May and continued through October with two market days each week, Tuesday and Saturday, from 9:00 A.M. to 1:00 P.M.

The offerings were many and varied and kept up to a high standard of quality. Beginning with the early Spring vegetables and fruits, young flower plants, broilers, eggs, cottage cheese and butter, with a regular supply of cakes, pies, bread and cookies. Throughout the season there were canned fruits, vegetables and pickles on sale. As the season advanced, fryers of 2 to 2½ lbs. weight were in demand, instead of broilers, and always found ready sale.

(k)- One Home Demonstration Club had an all day picnic in their community. They had no address

15

or program, saying that they simply wanted to talk to each other.

The Agent could not go but she has heard that they had a most enjoyable day.

Three School grounds of the County have been much improved by the ladies helping. They have been graded and seeded and a few shrubs put out.

8.- Mrs. C. M. Redd of the Sunshine Club has done some excellent work as a leader in her community. She attended every leader training meeting held in the county, gaining much information, that she took back to her Club. She never once missed a meeting of her Club or failed to have all the supplies she needed to give a most interesting demonstration. She gave all the food demonstrations to her Club assisted by the other leaders. Mrs. Redd lives two miles from the highway and the roads into her home in winter or wet weather are almost impassible, still she always gets to her meetings. Mrs. Redd is always helping her neighbors with their canning or food problems. She seems to never tire and is a person that everybody goes to with their troubles.

Year:	No. Clubs:	No. Leaders:	No. Dem. without Agent:	No. Dem. with Agent:	No. Dem. in which leaders assisted agent:	No. Training meetings held:	Total Attendance:
1931	4	8	7	11	6	3	18
1932	5	10	7	20	3	4	40
Projects							

76

1- In former years Prince Edward has been well represented at the State Homemakers Association meeting. This year the interest was just as keen, several women told the Agent how badly they wanted to go, but due to their financial condition, they were just not able. The drought was at it's worse too about this time.

J- (1)- Prince Edward County has no Fair of it's own but the County was fortunate in being one of the twelve in the State that had a booth in the V. P. I. Extension Building at the State Fair. All booths in this building had to represent the major project of their County.

For 1932 Prince Edward has majored in foods and has also had a small market, therefore the booth for this County was a road side market, with caudling of eggs for an activity. The booths were judged and Prince Edward given a white ribbon.

See picture - Appendix No. I.

(2) Approximately 250 were in attendance for the county Achievement Day exercises held October 29th, in the auditorium of the Farmville high school. The program opened with invocation by Rev. H. B. Lipscomb, Jr.

After lunch the 4-H club members were entertained with the home demonstration club members by Mrs. Mary Jackson Gould, Mrs. S. W. Putney and Mrs. E. F. Striplin, with humorous readings and music. The children then went to S. T. C. auditorium to see a movie and the women had the business part of the program. Mrs. H. N. Gordon, vice-president, presided over the meeting. After the roll call and minutes, reports were given by the home demonstration clubs of the county. A report of the year's work was given by Miss Courtney Farrar, home demonstration agent. Miss Janet Cameron, State food specialist, talked on "The Homemaker and Her Job", after which she awarded prizes to the following winners in the baking contest:

17

Cakes: 1st, Mrs. R. M. Anderson; 2nd, Mrs. E. C. Nunnally; 3rd, Miss Jennie Venable; 4th, Mrs. T. D. Dillon; 5th, Mrs. J. A. LeSueur; 6th, Mrs. L. T. Morris; 7th, Mrs. Mahan.

Yeast bread: 1st, Miss Annie McGehee; 2nd, Mrs. Alma Verelle; 3rd, Mrs. J. W. McFarland.

In the canning exhibits judged for the Dixie canning contest, Mrs. J. A. LeSueur won first.

Officers elected for the coming year are: President, Mrs. H. N. Gordon; vice-president, Mrs. W. E. Chappell; secretary, Mrs. R. B. Wilson.

The Thrift Club of Abilene won the banner for best attendance.

(3) -

The only tour in the County was made during Better Homes Week to the Brems Estate.

#### k- Market

Four years ago a little Club Market was started here in Farnville in a very small way. Last year the market had a right hard time to keep going, due to the abundance of vegetables and so many people selling on the streets. This year the market was run differently, the eight women asking that they be allowed to try selling without a manager. The Agent gave them all the help and supervision she had time for, and if things did not work smoothly no one heard of it.

The market was open twice a week, Tuesday and Saturday, from 9:00 A.M. to 1:00 P.M. The sales amounted to \$831.28 for the time opened, May 1st to November 1st. The money made on the market has been used in different ways. One woman painted her house with her money. A thing she has been wanting to do for a long time, and could not, due to the lack of funds.. Some others have lived and clothed themselves on their sales. One woman said that she had a note in a Federal Land Bank and that it would have been impossible to meet it, if she had not sold on the market.

1 -

There has been much relief work done here in the past year. The Red Cross fed five hundred families in

Prince Edward County last winter. The Agent was asked from time to time to make a cheap but nutritious food supply for a week. This fall when the Red Cross gave clothing materials to the County, the Agent made out the order, and went to the various communities to get a person there to handle the work. When the person in need cannot sew the Home Demonstration Clubs are making the garments for them.

- m- The best County wide piece of work done by the women was the Baking Contest as reported on page 3.

n- Social Hour Club

The report of the Social Hour Club at Achievement Day showed that a very successful club year had been completed but there were many things that the report didn't tell. It told of the results, but not of the thought and planning and endeavor that had produced the results. It didn't tell of the good times, the meeting of friends, the exchanging of ideas and the co-operation of members through out the year.

At the first meeting of the year Officers were elected, leaders chosen and hostesses named. Sometimes through out the year a hostess found that she could not entertain, then she was to exchange with another. Foods were selected for the major project and Labor Saving Devices the minor study. This being the December meeting a Christmas program was the feature of the social hour.

In January the leaders gave a demonstration on "Fruits in the diet"; at this meeting it was decided not to serve refreshments during the winter months. In February we had "Meats and Meat Substitutes", they seemed to hit the spot for all seemed very much interested. The "Salads" in March brought more interest to salads in the diet, one thing I think we all lack. In April the demonstration on "Vegetables" given

19

by the Home Agent added variety to our menus at a time when they had begun to pall.

May was devoted to a study of our minor project, Labor saving devices, and later several members reported improvements in their kitchens following the suggestions which had been given. June and July were "Desserts" and "Cakes and cake fillings". As a result of the cake demonstration some of our members added better cakes to their club market with gratifying results. In August we joined with the other clubs of the county and accepted an invitation of the county 4-H clubs for a county picnic. September came and we were given score cards and told to judge one another's cakes and bread. This we enjoyed very much, especially the eating of them with punch served by the hostess. October was report day, and this is a summary of our Club. Active members, 14., number completing the projects, 12., Food meetings 6. Total attendance 87. Number homes in the community, 27. Number reached by club 25. Total containers of food canned, 1,569. Number of pressure cookers purchased 1. Number homes following a garden live at home plan, 14.

We won the county canning contest, the district and state also gave a member of our club first place. In the county Achievement Day cake and bread contest, we won first on cake, and six lower places on both cakes and bread.

For our Community work we gave to the Community Hospital a tree for the Bi-centennial. We gave five dollars to the Advisory Council and sponsored a gift of \$35.00 to the Rest Room which was given by the Lions Club. Our November program will be a Thanksgiving program."

o- Ball Brothers Contest

The Ball Brothers Company has had a canning contest on in the State all the year that ended with the judging of the exhibits at the state fair. The exhibit had to consist of eight jars - two fruits, two meats, two vegetables and two other products. Only

20

the winning exhibit from the counties could compete in the final judging at the state fair.

Mrs. J. A. LeSueur of Farmville was the winner for Prince Edward County in competition with seven others that entered last April. This exhibit was taken to the state fair and when judged with the other winning exhibits from different counties, was placed first. The first prize was \$12.50.

In the Dixie Canning Contest Mrs. LeSueur also won first in her district, getting the Steam Pressure Cooker.

p- Miss Ella Gardner was in the County last year for an all day Recreational Conference. The women were delighted with what she taught them and as a result they are playing more and getting more fun into their meetings. The 4-H Club members always play for an hour or more at their summer meetings.

3. a- There are 760 girls of Club age in Prince Edward County.

b-

Year:	Members			Clubs		
	total no.:	Increase:	Percent:	Total:	Increase:	Percent
	No.	No.		No.	No.	
1928:	101	:	:	10	:	:
1929:	97	4	:	4	decrease:	no percent
1930:	103	6	5+	5	1	20
1931:	135	32	24	5	not any	not any
1932:	125	not any	not any	5	not any	not any

21

Years in Club Work											Age of Members												
Year:	:1	:2	:3	:4	:5	:6	:7	:8	:9	:10	Year:	:10	:11	:12	:13	:14	:15	:16	:17	:18	:19	:20	
	:Girls:	67	29	18	13	7	1	:	:	:		:Girls:	19	19	20	18	20	12	16	6	5	:	:
1931:	Boys	:	:	:	:	:	:	:	:	:		1931:	Boys	:	:	:	:	:	:	:	:	:	:
	:Girls:	51	34	23	13	14	:	:	:	:		:Girls:	17	30	18	20	16	11	12	8	3	:	:
1932:	Boys	:	:	:	:	:	:	:	:	:		1932:	Boys	:	:	:	:	:	:	:	:	:	:

**d-Project Activities**

- (a)- There are five project groups doing Room improvement with an enrollment of 135.  
There are three project groups doing canning as a minor with an enrollment of 50.
- (b)- The Worsham Club members have done good work this year in Room Improvement. They were all interested, so accomplished the following:

Work Done	Number	Actual cost	Amount Saved
Chairs or stools seated .....	20	5.00	7.50
Articles slip-covered or upholstered...			
Furniture repaired, remodeled or re-finished.....	11	2.50	2.10
Window treatments improved .....	9	2.70	1.80
Rooms in which walls, woodwork or floor finish were improved .....	6	18.00	6.00
Articles or sets of linens made .....	43	6.50	4.30
Rugs, mats, or chair seats made .....	3	1.50	.75
Other articles made or made over .....	4		.50
Ready-made articles secured .....	28	3.60	
<b>TOTALS</b> .....	<b>124</b>	<b>38.80</b>	<b>22.95</b>

*Handwritten initials*

The Prospect Club has done some good canning when the awful drought of the year is taken into consideration. This Club had 23 members to enroll for canning work and 23 members completed canning the following - 427 quarts of fruits, 323 quarts of vegetables and 158 quarts of other products.

(c)- Story of Room Improvement Work by Jewel Daniel - Club Member.

My Sunshine Room.

My room is a north west one and was very dark and cold looking before I joined the 4-H Club, but after I joined the Club and remodeled it, I can now call it my sunshine room because it is so bright and warm looking.

First I made my room plan, then I went to work on my room. The first problem was a closet. My room did not have a closet or any place to hang my clothes. I asked Papa if he would build me one. He said he would. So he built it in the chimney corner, put four nice shelves in it and a nice door to it and it only cost \$3.50.

My next big problem was the walls. They had been papered, but the paper had cracked as well as faded. So I got the paper catalogue and picked out a paper with little yellow and pink roses in it. Papa ordered it for me and it only cost 75¢. When it came I went to work and tacked old cloth and sheets over the cracks and the old paper that was loose I pulled off, then Papa helped to put the new paper on.

I had a bed, table, trunk and a straight chair in my room that was not needed, so I took them out. I then put my bed straight with the lines of the room. I also put my dresser and washstand with the lines of the room, then I had plenty of space for more furniture. So I went up in the attic and found a small rocking chair and a small writing desk, I brought them down, washed them off nice and took all of the old paint off, then I painted them ivory. My dresser was an oak color and my bed had been white but the enamel had been broken off, so I painted all of my furniture over with ivory paint, which cost 60¢.

I took the table which I didn't need and made a dressing table out of it. My mirror cost 25¢.

43

After I had finished my furniture I thought of my floor. The floor was old and didn't look good, so I didn't know what to do, but I finally decided to oil it. So I bought one-half gallon of floor oil for 15¢ and oiled my floor. A pair of cream curtains were given me. I bought a pair of yellow candles for the mantle, which cost 10¢ and a pink bed spread on sale for 50¢. I made me a pink and yellow boudoir pillow for my bed, which added a lot of color.

So now I have a nice room which only cost me \$5.25."

Story of Canning Work by Caroline Alsop.

"I had watched my Mother can for several years, helping her to gather and prepare the vegetables and fruits. One day I asked her why I could not join the Canning Club and do the work myself. Mother was delighted with the idea and we both began to make plans. I joined the Canning Club for 1932 and began early to prepare me a garden. This I planted and worked with the help of my father and it being on a rich spot I had a good supply of vegetables. My Club leader taught me several things about canning, and with what my Mother already knew I canned this:

56 quarts of tomatoes  
24 quarts of soup mixture  
12 quarts of snaps  
8 quarts of beets  
10 quarts of squash  
24 quarts of pears  
36 quarts of peaches"

150 quarts for the year and she didn't have to work hard either, for it was more like play.

e- No work is being done with the older girls in groups. Individual help has been given in Room Improvement and food work. There are 391 girls in Prince Edward County between fifteen and twenty-one years old.

f- Leader Training.

54

Year:	No. Clubs:	No. Leaders:	No. Dem. without agent:	No. Dem. with agent:	No. Dem. Leader assisted agent:	No. Leader training meetings held:	Total Attendance:
1931:	5	6	12	8	25	6	21
1932:	5	6	15	11	25	6	27

(a)- Mildred W. Young's story as Leader

Prospect 4-H Leader's Report

"At the beginning of 1932 - 34 members were enrolled in 4-H work. 9 boys and 25 girls. The girls had Room Improvement as their major project and Canning as their minor project.

As leader of the Prospect 4-H Club I have attended the 12 4-H Club meetings, 6 Leader training meetings, 2 Club Councils, the Club Rally, 3 Club socials, 1 Club picnic, the District Short Course and the State Short Course, chaperoning a girl from my Club.

The Club had an hour for the monthly meetings at which time 20 minutes was given to the program and business part, the remaining 40 minutes was left for checking records, demonstrations and general discussions.

A program committee with my help planned in advance a most interesting and instructive program for each month. At each meeting I gave demonstrations on the improvement of a Club Girls Room so that each girl could have an attractive, comfortable room of her own, one that fills her needs and becomes an expression of her growing personality.

I also visited most of the girls rooms and gave them individual help.

g- 4-H Club Activities

(a)- Prince Edward County has it's schools more highly consolidated than most counties. There are only five white schools in the entire County. The children are brought in on

25

trucks from two to twenty-two miles, some leave home by eight most and do not get back until most dark. For this reason our Club meetings have to be during school hours and in schools. The five Clubs of the County meet for one hour each month.

During the summer months the Clubs hold their meetings in some member's home, usually in the afternoon. After the business meeting and demonstration the children get out of doors and play for an hour or more. The attendance at the summer meetings is not as good as the others, for the reason that the children live so far apart they are unable to come together.

The County Agent and I split one Club, where we could do so and met as many as could get to each point. This worked beautifully.

(b)- Prospect 4-H Community Club

Goals-

Accomplishments.

Goals-	Accomplishments.
To have 12 meetings	12 meetings held.
To have 100% attendance at all meetings	85% attendance at meetings.
To have 100% completion of projects	100% completion of projects
To have all members attend Rally	15 members attended.
To send delegates to District Short Course.	7 members attended
To send delegates to State Short Course:	1 member attended.
To have demonstration team	10 demonstrations given
To have Community project.	Gave picture to school auditorium.
To have program at every meeting	Program given at every meeting
To have Club picnic	Picnic held in July
To have all officers attend County Council Meeting.	Not all attended due to illness in family
To take part in all County wide activities,	Part taken in all County-wide activities.

26

These goals were discussed and drawn up by the members assisted by their Leaders and the County Extension Agents. These were the things they hoped to accomplish in addition to their project work. The Leaders helped to keep these goals before the Club members, discussing them at meetings and individually too. These Club members, too, were most interested in making their Club the banner Club of the County, so they helped each other to carry out the goals or program.

#### h.-Special Events

##### (a)-(1)-County Rally

The 4-H club children, members of the home demonstration clubs, and the Grange members of Prince Edward county held their annual rally on the campus at Hampden-Sydney College August 17.

There were more than one hundred present for the program in the forenoon which consisted of songs, a talk by G. A. Elcan, assistant state boys club agent, and also a very inspiring talk by John R. Horsley, master of the State Grange. Mr. Horsley expressed the opinion that the hope of rural America to a large extent depended upon organization, and especially community organization.

The forenoon program was concluded with demonstrations and stunts by several clubs. The demonstration team represented the Worsham club and gave a very interesting demonstration on arrangement of furniture in the home.

The program being concluded Mrs. Kyle Young, leader of the Prospect club announced that lunch would be spread in the grove nearby. A most bountiful lunch was spread and

27

enjoyed fully after which several games and contests were held. The ladies entered heartily in to a rolling pin throwing contest with the results very much confused as to the winner. Probably the event enjoyed most by those looking on was the pie eating contest, which ended with all the pie being eaten. Then followed the shoe scramble among the boys and girls, also a marshmallow contest, and horse pitching for the men and boys.

Everyone seemed to enjoy the whole program and it ended by many going to the lake for a swim.

(2)- Achievement Day

Annual achievement day brought over 250 representatives from Prince Edward home demonstration and 4-H clubs into the high school auditorium here October 29th, for a program which featured talks by Miss Janet Cameron, State food specialist, and F. S. Farrar, district agent of the V. P. I extension division.

Caroline Alsop, President of the County Council presided. She called on the Presidents of the five 4-H Community Clubs for a report of the accomplishments for the year. After the report each club gave a very amusing and interesting stunt. The banner was awarded to the Prospect Club again for being the best Club in the County.

After peppy songs the meeting adjourned for lunch, after which the children were given a movie free.

- (3)- Each of the five Community 4-H Clubs held Achievement programs. Their records were discussed as to final completions.

28

b-Contest

The growth work contest was held during the Hampden Sydney Short Course. Dr. Whelldon of Richmond was scheduled to come but was unable to do so at the last, so he sent his nurse. She examined each child, boy and girl, for defects and determined the two best, boy and girl. The Hampden-Sydney Short Course sent these two to the State Short Course.

1-Hampden Sydney District Short Course

	No. clubs Represented	:	No. Members Attending	:	No. Leaders Attending
District	4	:	31	:	2
State	1	:	1	:	1

The old historic institution of Hampden Sydney threw open its doors on June 27 for the seventh annual session of the Hampden Sydney District 4-H Club Short Course. 218 Children, Leaders and Agents from the seven counties in Southside Virginia gathered together. The Camp began Monday with registration of members; H. E. McSwain of Charlotte was Camp Manager, Courtney Farrar of Prince Edward had charge of the girls, their registration etc. Mr. Copley of Charlotte registered the boys. Mr. Oliver had charge of the boys dormitory, Mr. Ellis was in charge of class rooms; Mr. Hudgins did class work; Mr. Grubbs taught the boys hand work while Miss Miller had a substitute for the girls hand work; Mr. Striplin was in charge of the kitchen while Misses Pitts and Quizenberry were hostesses for the dining room. The food demonstrations were in charge of Courtney Farrar but were given by Mrs. Rich of the Corn Products Co., and they were very instructive and interesting.

When Saturday morning brought to a close the Short Course all seemed to be in excellent spirits showing that they had enjoyed the week of work and

29

recreation to the fullest extent. They were high in their praise of Hampden Sydney as an ideal place to meet, they all seemed to have made new friends and were full of the spirit of fellowship and pep. The Agents as well as the Authorities at Hampden Sydney are well pleased with the results of the week.

j- All Star Chapter

No all star chapter has been organized in the county as yet.

k - Leaders Organisation

The County leaders have been untiring in their efforts and have done some very fine work for the County, however they have not organized.

l- Recreation

As stated before, the Club members do most of their playing during the summer months, their time being so limited during school hours. It has been discussed getting the different communities out to a center for one night during the month, at which time they would have recreation mostly.

VI - Financial Statement of Value of Work

30

WOMEN

Project	Members Enrolled:	Cost	Value	Amt. Produced
Clothing	:	:	:	:
Food and Nutrition	67	1041.30	1932.20	:
Home Management	67	12.00	25.00	:
Garden	7	75.00	150.00	:
Poultry	:	225.00	500.00	:

GIRLS

Project	Members Enrolled:	Cost	Value	Amt. Produced
Clothing	:	:	:	:
Food and Nutrition	50	130.60	312.20	:
Home Impr.	135	202.20	300.00	:
Garden	:	:	:	:
Poultry	:	:	:	:

VII- Evidence of Progress:

Women's Work: Girls Work:

1	: not any	: More clubs organized
20	: 51	: More members enrolled ( New members)
10	: 2	: More members completed their project
3	: Not any	: More club meetings held
10	: 1	: More leaders
4	: 6	: More leaders training meetings
5	: 5	: More club achievement days
1	:	: More judging contests held
20%	: 10%	: More demonstrations by members
	: Percent	: More girls enrolled
150	: 100	: More people reached

31

VIII-Summary of Year's Work

This report covers work from December 1st 1931 to November 30th, 1932 in 8 communities with 6 Home Demonstration Clubs enrolling 77 women and 5 girls Clubs with 135 members enrolled. Of this number 55 women and 115 girls attended meetings regular and completed their projects.

500 of the 900 white farm homes have been reached directly and about 250 others indirectly.

These 5 women groups (one group was just organized in October) held 63 meetings with an attendance of 2,340. 5 girls Clubs held 51 meetings with an attendance of 5,100. The women studied Foods as a major and Home Management as a minor. The girls took Room Improvement as a major and Canning as a Minor.

The women reported in their Food work -

61 members planning well balanced meals

65 members having gardens

47 members enlarging their gardens in 1932

4 Pressure Cookers purchased

3077 quarts of fruit canned

1836 quarts of vegetables canned

749 quarts of meats

1276 quarts of other things

In the Home Management for women -

23 kitchens were rearranged for convenience

43 homes obtained labor saving equipment

5 homes kept accounts of their expenditures

In the girls work-

100 girls practiced better methods of caring for their rooms

80 girls improved their selection of furnishings

67 girls followed recommendations in repairing, remodeling furniture

70 girls improved their windows

92 girls made improvements in arranging furniture

57 girls improved their walls, wood work or floors

82 girls improved their pictures & accessories

34

215 articles were made or made over  
42 new articles were purchased  
89 stools or chairs were seated  
131 pieces of old furniture were repaired and made usable.  
51 Improved or made new clothes closets

In the girls Canning work -  
492 quarts of vegetables, 608 quarts of fruits and 206 quarts of other things were canned.

8 women sold on the Club Market a total of \$831.28 worth of produce.

13 girls and 2 leaders attended the District Short Course. 1 girl and 1 leader attended the State Short Course.

During the past 12 months the Agent spent 184 days in the field with a mileage of 10,181 miles. 97 days were spent in the office with 475 office calls and 369 telephone calls, being made on the Agent. 626 individual letters and 20 circular letters have been written by the Agent. 401 farm homes visits have been made and 369 different homes visited. 299 news articles have been prepared for press.

7 women entered the State Canning Contest. One woman won first prize in State and District.

The work from the Agent's view point has been very satisfactory, and I think the women and girls deserve much credit for what they have done.

#### Plans and Goals for 1935

For 1935, I shall recommend the continuance of the Club Market. I shall urge the observation of Better Homes Week.

I shall try to organize one new Home Demonstration

1  
33

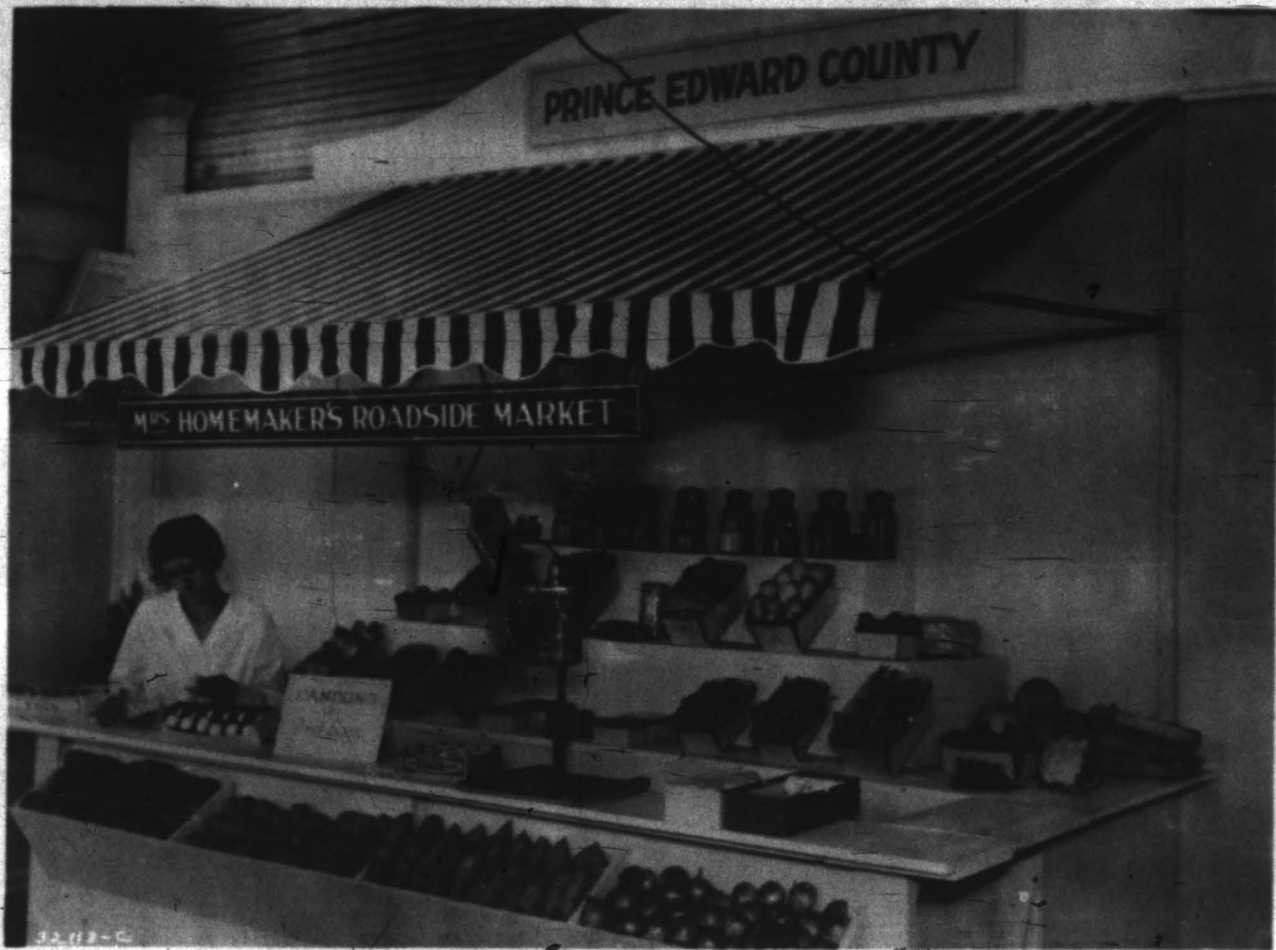
Club, and urge the Clubs already organized to expand and take in more members; hold a minimum of 6 meetings in their major project. I shall further recommend that each Club train leaders in their major projects, that these leaders collect illustrative material and present their subjects to the Clubs. That the Federation of Women's Clubs provide a more varied and interesting program of their meetings.

The plans for 1933 as started and underway is to have a 4-H Community Club at the five schools in the County with an enrollment of not less than 150. These Clubs to meet all requirements in the food and canning projects they have undertaken.

All Home Demonstration Clubs to study, and take Foods as their major piece of work with Clothing as a minor.

The County as a whole is to major on Foods. The Advisory Council will sponsor a Clothing Contest. The Community Rest Room and the Club Market for 1933.

34



PROGRAM OF WORK

1933

Prince Edward County

Courtney Ferrar, County Home Demonstration Agent

GOALS	ACCOMPLISHMENTS
1. COUNTY WIDE ACTIVITIES	
1. County wide Baking Contest	Contest held.
2. Observance of Better Homes week. Tour to Historical Home & Garden.	26 people made tour.
3. Help with Marketing.	\$831.28 sold
4. Advisory Board to foster financing The Community Rest Room.	Rest Room financed
5. County wide Canning School	Canning School held.
6. Hold County Leader Conferences	10 Conferences held
7. Work with Egg-Grading Station and improve the family poultry flocks.	Egg-grading station did excellent work. Flocks improved.
8. County Achievement Day for Women and Girls.	250 attended
9. Hold Rally Day	Rally Day held
10. District Short Course, 15 girls.	13 girls attended
11. State Short Course, 2 girls.	1 girl attended
12. Two meetings of Club Council	3 meetings held
13. More and better Fall Gardens	50% more.
14. Completions in all project work	86% completions.

COOPERATIVE EXTENSION WORK IN AGRICULTURE AND HOME ECONOMICS

U. S. Department of Agriculture  
and State Agricultural Colleges  
Cooperating

Extension Service,  
Office of Cooperative Extension Work  
Washington, D. C.

ANNUAL REPORT OF COUNTY EXTENSION WORKERS

This report form is to be used by county extension agents, such as county agricultural agent, home demonstration agent, club agent, and negro agent, reporting on their respective lines of work.

State Virginia County Prince Edward  
Report of Paulette Taylor County Home Demonstration Agent  
(Name) (Title)  
From December 1, 1931 to November 30, 1932

If agent has not been employed entire year, indicate exact period. Agents resigning during the year should make out this report before quitting the service.

READ DEFINITIONS, PAGE 3



HOME DEMONSTRATION AGENT ANNUAL REPORT

Approved:

Date Dec 7-1932 Maudie E. Wallace  
State or District Supervisor.

Date \_\_\_\_\_ State Extension Director.

## SUGGESTIONS RELATIVE TO THE PREPARATION OF THE COUNTY EXTENSION AGENT'S ANNUAL REPORT

The annual report should be a summary, with analysis and interpretations, for presentation to the people of the county, the State, and the Nation of the extension activities in each county for the year and the results obtained by the county extension agent, assisted by the subject-matter specialists. The making of such a report is of great value to the county extension agent and the people of the county in showing the progress made during the year as a basis for future plans. It is of vital concern also to the State and Nation as a measure of rural progress and a basis for intelligent legislation and financial support of extension work.

Separate statistical and narrative reports are desired from each leader of a line of work, such as county agricultural agent, home demonstration agent, boys' and girls' club agent, and negro agent, regardless of title. Where an assistant agent has been employed a part or all of the year, a report on his or her work should be included with the report of the leader of that line of work. Where an agent in charge of a line of work has quit the service during the year, the information contained in his or her report should be incorporated in the annual report of the agent on duty at the close of the report year, and the latter report so marked. Where two or more agents are employed in a county, each a leader of a line of work, statistics should not be duplicated.

At least four copies of the annual report should be made: One copy for the county officials, one copy for the agent's files, one copy for the State extension office, and one copy for the Extension Service, United States Department of Agriculture. The report to the Washington office should be sent through the State extension office.

### NARRATIVE SUMMARY

The narrative report should summarize and interpret the outstanding results accomplished and the extension methods used, under appropriate subheadings, for each project. Every statement should be clear-cut, concise, forceful, and, where possible, prefaced with necessary data from the statistical summary. Use an interesting style of writing, giving major accomplishments first under each project. Give extension methods fully relating to outstanding results only, and where practicable illustrate with photographs, maps, diagrams, blue prints, or copies of charts and other forms used. Full credit should be given to all cooperating agencies. The lines should be single-spaced, with double space between the paragraphs, and reasonably good margins. The pages should be numbered in consecutive order.

The following outline is suggestive of how the narrative report may be clearly and systematically presented. Each agent should adapt the outline to the situation and the work to be reported.

#### SUGGESTIVE OUTLINE OF ANNUAL NARRATIVE REPORT

- I. Cover and title page.
- II. Table of contents.
- III. Status of county extension organization.
  - (1) Form of organization—changes and development.
  - (2) Position of local people, committees, or project leaders in developing the program of work.
  - (3) General policies, including relationships to other organizations.
- IV. Program of work; listing goals set up, methods employed, and results achieved.
  - (1) Factors considered and methods used in determining program of work.
 

<ol style="list-style-type: none"> <li>(a) Cornsilk.</li> <li>(b) Legumes and forage crops.</li> <li>(c) Potatoes, Irish.</li> <li>(d) Cotton.</li> <li>(e) Tobacco and other special crops.</li> <li>(f) Home gardens and home beautification.</li> <li>(g) Market gardens and truck crops.</li> <li>(h) Fruits.</li> <li>(i) Forestry.</li> <li>(j) Rodents and insectivorous insects.</li> <li>(k) Agricultural engineering and home engineering.</li> <li>(l) Poultry.</li> </ol>	<ol style="list-style-type: none"> <li>(m) Dairy.</li> <li>(n) Other livestock.</li> <li>(o) Farm management.</li> <li>(p) Marketing, farm and home.</li> <li>(q) Foods and nutrition.</li> <li>(r) Child rearing and care.</li> <li>(s) Clothing.</li> <li>(t) Home management.</li> <li>(u) Home furnishings.</li> <li>(v) Home health and sanitation.</li> <li>(w) Community activities.</li> <li>(x) Miscellaneous.</li> </ol>
---	--
  - (2) Project activities and results.
- V. Outlook and recommendations, including suggestive program of work for next year.
- VI. Summary of activities and accomplishments, preferably of one or two typewritten pages only, placed at the beginning or end of the narrative report.

## STATISTICAL SUMMARY

To supplement the narrative part of the report, and in order that comparable State and National summaries may be made, it is necessary to include a statistical summary of the work in each county. The following form has been prepared to insure uniformity of reporting:

### DEFINITIONS OF TERMS USED IN THIS REPORT

1. A program of work is a statement of the specific lines of extension work to be undertaken by the extension agent during a year or a period of years.
2. A plan of work is a definite outline of procedure for carrying out the different phases of the program of work. Such a plan provides specifically for the means to be used and the methods of using them. It also shows what, how, when, and where the work is to be done.
3. A community is a more or less well-defined group of rural people with common interests and problems. Such a group may include those within a township, trade area, or similar limits. For the purpose of this report a community is one of the several units into which a county is divided for conducting organized extension work.
4. A project leader, local leader, or committeeman is a person who, because of special interest and fitness, is selected to serve as a leader in advancing some phase of the local extension program. A project leader may be either an organization or a subject-matter leader.
5. Demonstrations as contemplated in this report are of two kinds—method demonstrations and result demonstrations. A method demonstration is a demonstration given by an extension worker or other trained leader for the purpose of showing how to carry out a practice. Examples: Demonstrations of how to can fruits and vegetables, mix spray materials, and cull poultry. A result demonstration is a demonstration conducted by a farmer, home maker, boy, or girl under the direct supervision of the extension worker, to show locally the value of a recommended practice. Such a demonstration involves a substantial period of time and records of results and comparisons, and is designed to teach others in addition to the persons conducting the demonstration. Examples: Demonstrating that the application of fertilizer to cotton will result in more profitable yields, that underweight of certain children can be corrected through proper diet, or that the use of certified seed in growing potatoes is a good investment. The adoption of a farm or home practice resulting from a demonstration or other teaching activity employed by the extension worker as a means of teaching is not in itself a demonstration.
6. A result demonstrator is an adult, boy, or girl who conducts a result demonstration as defined above.
7. A cooperator is a farmer or home maker who agrees to adopt certain recommended practices upon the satisfaction of an extension worker. The work is not directly supervised by the extension agent and records are not required, but reports on the success of the practices may be obtained.
8. A 4-H Club is an organized group of boys and/or girls with the objectives of demonstrating improved practices in agriculture or home economics, and of providing desirable training for the members.
9. 4-H Club members enrolled are those boys and girls who actually start the work outlined for the year.
10. 4-H Club members completing are those boys and girls who satisfactorily finish the work outlined for the year.
11. A demonstration meeting is a meeting held to give a method demonstration or to start, inspect, or further a result demonstration.
12. A training meeting is a meeting at which project leaders, local leaders, or committeemen are trained to carry on extension activities in their respective communities.
13. An office call is a call in person by an individual or group seeking agricultural or home-economics information, as a result of which some definite assistance or information is given. A telephone call differs from an office call in that the assistance or information is given or received by means of the telephone. Telephone calls may be either incoming or outgoing.
14. A farm or home visit is a call by the agent at a farm or home at which some definite information relating to extension work is given or obtained.
15. Days in office should include time spent by the county extension agent in his office, extension conferences, and any other work directly related to office administration.
16. Days in field should include all days spent on official duty other than those spent in office.
17. Letters written should include all original letters on official business. (Duplicate letters should not be included.)
18. An extension school is a school usually of two to six days' duration, arranged by the extension service, where practical instruction is given to persons not resident at the college. An extension short course differs from an extension school in that it is usually held at the college or other educational institution and usually for a longer period of time.
19. Records consist of definite information on file in the county office that will enable the agent to verify the data on extension work included in this report.

## GENERAL ACTIVITIES

*Report Only This Year's Activities and Results that can be Verified*

1. List below the names, titles, and periods of service of the county extension agents whose work is included in this report.

Louise Taylor Home Dem. Agent 12  
(Name) (Title) (Months of service this year)

2. County extension organization or association.

(a) Name County Advisory Council

(b) Number of members (1) Men \_\_\_\_\_  
(2) Women 12

3. Number of communities in county where extension work should be conducted. 8

4. Number of above communities in which the extension program has been cooperatively worked out by extension agents and local committees. 8

5. Number of different voluntary county or community local leaders or committeemen actively engaged in forwarding the extension program.

(a) Adult work (1) Men \_\_\_\_\_  
(2) Women 22

(b) 4-H Club work (1) Men \_\_\_\_\_  
(2) Women 6  
(3) Older club boys 2  
(4) Older club girls \_\_\_\_\_

6. Number of clubs or other groups organized to carry on adult home demonstration work. 6

7. Members in above clubs or groups. 77

8. Number of 4-H Clubs. 5

9. Number of different 4-H Club members enrolled (a) Boys \_\_\_\_\_  
(b) Girls 135

10. Number of different 4-H Club members completing (a) Boys \_\_\_\_\_  
(b) Girls 115

11. Number of members enrolled in 4-H Club work for:

	1st Year	2d Year	3d Year	4th Year	5th Year	6th Year and Over
(a) Boys						
(b) Girls	<u>51</u>	<u>34</u>	<u>23</u>	<u>13</u>	<u>14</u>	

12. Number of 4-H Club members according to age.

Age	10	11	12	13	14	15	16	17	18	19	20
Boys											
Girls	<u>17</u>	<u>30</u>	<u>18</u>	<u>20</u>	<u>16</u>	<u>11</u>	<u>12</u>	<u>8</u>	<u>3</u>		

\* Report the total number of different boys or girls enrolled in club work. This total should equal the sum of the project enrollments reported on pages 8 to 11, less any duplications due to the same boy or girl carrying on two or more subject-matter lines of work.

## GENERAL ACTIVITIES—Continued

Report Only This Year's Extension Activities and Results that can be Verified

13. Number of 4-H Club members in school	135	Out of school		13
14. Number of 4-H Club teams trained		(a) Judging		14
		(b) Demonstration	3	
15. Number of groups organized for extension work with rural young people above the 4-H Club age				15
16. Members in above groups		(a) Young men		16
		(b) Young women		
17. Total number of farm visits <sup>1</sup> made in conducting extension work				17
18. Number of different farms visited				18
19. Total number of home visits <sup>2</sup> made in conducting extension work			401	19
20. Number of different homes visited			369	20
21. Number of calls relating to extension work		(a) Office	475	21
		(b) Telephone	369	
22. Number of days agent spent in office			97	22
23. Number of days agent spent in field			184	23
24. Number of news articles or stories published <sup>3</sup>			299	24
25. Number of individual letters written			626	25
26. Number of different circular letters prepared (not total copies mailed)			20	26
27. Number of bulletins distributed			1240	27
28. Number of radio talks made				28
29. Number of events at which extension exhibits were shown			2	29
			4	
30. Training meetings held for local leaders or committeemen	(a) Adult work	(1) Number		30
		(2) Total men leaders attending		
		(3) Total women leaders attending	40	
	(b) 4-H Club	(1) Number	6	
		(2) Total leaders attending	27	
31. Method demonstration meetings held (do not include meetings reported under No. 30)	(a) Number	97		31
	(b) Total attendance	2928		
32. Meetings held at result demonstrations	(a) Number	7		32
	(b) Total attendance	235		
33. Tours conducted	(a) Number	1		33
	(b) Total attendance	26		
34. Achievement days held	(a) Adult work	(1) Number	1	34
		(2) Total attendance	102	
	(b) 4-H Club	(1) Number	1	
		(2) Total attendance	450	

<sup>1</sup> List as farm or home visit according to principal purpose of visit.<sup>2</sup> Include county and State press, agricultural journals, and home magazines. Do not count items relating to notices of meetings only.

## GENERAL ACTIVITIES—Continued

Report Only This Year's Extension Activities and Results that can be Verified

		(1) Number.....	
	(a) Farm women	(2) Total members attending.....	
		(3) Total others attending.....	
35. Encampments held.....		(1) Number.....	35
		(2) Total boys attending.....	
	(b) 4-H Club.....	(3) Total girls attending.....	13
		(4) Total others attending.....	187
36. Other meetings of an extension nature participated in and not previously reported.....		(a) Number.....	79
		(b) Total attendance.....	5175
		(1) Number.....	
37. Meetings held by local leaders or committeemen not participated in by agent and not reported elsewhere.....	(a) Adult work	(2) Total attendance.....	
		(1) Number.....	37
	(b) 4-H Club.....	(2) Total attendance.....	

## PROGRAM SUMMARY

List below information on each subdivision of the program of work. Include under each heading all of the work done with men, women, boys, and girls. If an assistant agent has been employed include his or her time with that of the agent. This page should not be filled out until the questions on the following pages have been answered. Estimate where records are not available.

Line of work	Number of committees or other units participating	Number of leaders or committeemen assisting	Days specialists helped with line of work	Days agent devoted to line of work	Number of meetings held in relation to line of work	Number of news stories published	Number of different circular letters issued	Number of farm or home visits made	Number of letters calls received	
	(a)	(b)	(c)	(d)	(e)	(f)	(g)	(h)	(i)	
38. Cereals (page 8)										38
39. Legumes and forage crops (pages 9, 10)										39
40. Potatoes, Irish (page 11)										40
41. Cotton (page 11)										41
42. Tobacco and other special crops (page 11)										42
43. Home gardens and home beautification (page 12)	8	16		27		22	2	55	67	43
44. Market garden and truck crops (page 12)	5			30		16	2	40	72	44
45. Fruits (page 12)										45
46. Forestry (page 13)										46
47. Rodents and miscellaneous insects (page 13)										47
48. Agricultural engineering (page 14)										48
49. Poultry (page 15)	8	1	1	18		10	2	35	121	49
50. Dairy (page 15)										50
51. Other livestock (page 15)										51
52. Farm management (page 16)										52
53. Marketing—farm and home (page 17)										53
54. Foods and nutrition (page 18)	8	15	5	82	41	69	3	103	162	54
55. Child training and care (page 19)										55
56. Clothing (page 20)	3			5				15	38	56
57. Home management (page 21)	8	10		10	15	35	2	34	94	57
58. House furnishings (page 22)	9	6	5	74	41	48	2	87	109	58
59. Home health and sanitation (page 23)										59
60. Community activities (page 24)	3	16		5		5		6	88	60
61. Miscellaneous (page 24)										61
62. Building extension program of work <sup>1</sup>	8	16		17	47	56	2			62
63. Organization—extension association and committee <sup>2</sup>	8	12		13	42	38	5	26	93	63
<b>Total</b>				11	281	196	299	20	401	844

<sup>1</sup>The totals for these columns do not necessarily check with the information given on pages 4, 5, and 6, since one meeting, farm visit, circular letter, etc., may relate to two or more lines of subject matter.

<sup>2</sup>Under "building the extension program" include all work incident to the collection of economic and social data as a basis for determining programs, the conducting of program surveys, and the outlining of county, district, and community programs. Do not include work related to the execution of programs, as this should be reported under the projects above.

<sup>3</sup>Under "organization" include all work incident to maintaining extension associations, agricultural councils, home demonstration councils, advisory committees, project committees, community committees, and the like not reported under building the extension program.









## FRUITS, VEGETABLES, AND BEAUTIFICATION OF HOME GROUNDS

Report Only This Year's Extension Activities that are Supported by Records

Item	(a)	(b)	(c)	(d)	(e)	(f)
	Home gardens	Market gardening, truck, and canning crops	Beautification of home grounds	Tree fruits	Bush and small fruits	Grapes
88. Number of method demonstration meetings held.....						88
89. Number of adult result demonstrations completed or carried into the next year.....						89
90. Total number of acres included in adult result demonstrations.....	XXXXX		XXXXX			90
91. Average increased yield per acre on adult result demonstrations due to recommended practices.....	XXXXX	bu.	XXXXX	bu.	qts.	lbs. 91
92. Number of 4-H Club members enrolled.....	(1) Boys					92
	(2) Girls					
93. Number of 4-H Club members completing.....	(1) Boys					93
	(2) Girls					
94. Number of acres grown by club members completing.....			XXXXX			94
NOTE.—Work relating to soils and fertilizers, insects, and plant diseases should be reported in connection with the crops concerned.						
(Use space below for State questions not listed above)						

## VEGETABLE GARDENING

Estimated value of vegetables in 4-H club gardens \_\_\_\_\_ adult gardens \_\_\_\_\_  
 No. 4-H club members with own garden \_\_\_\_\_ No. using parents garden \_\_\_\_\_  
 Percentage of 4-H club members having good fall gardens \_\_\_\_\_  
 No. adult garden club members 7 No. adult leaders trained \_\_\_\_\_  
 No. food club members minoring in gardens \_\_\_\_\_  
 No. members raising new vegetables \_\_\_\_\_  
 No. members selling vegetables from garden 3  
 Amount of sales from specific gardens 60.00  
 No. county leader training meetings held \_\_\_\_\_  
 Total attendance at county leader training meetings \_\_\_\_\_  
 No demonstrations given by leaders with agent present \_\_\_\_\_ Without agent \_\_\_\_\_  
 No. demonstrations given where leaders assisted agent \_\_\_\_\_

## LANDSCAPE GARDENING

No. demonstrations in yards to homemakers \_\_\_\_\_  
 No. demonstrations on school grounds to women's groups \_\_\_\_\_  
 No. demonstrations on civic grounds to women's groups \_\_\_\_\_  
 No. result demonstrations: (a) yards \_\_\_\_\_ (b) schools \_\_\_\_\_ (c) civic centers \_\_\_\_\_  
 No. persons using advice for improving home grounds \_\_\_\_\_ other grounds \_\_\_\_\_  
 No. persons receiving information on: plant study \_\_\_\_\_ flower growing \_\_\_\_\_  
 landscape needs \_\_\_\_\_ standards and objectives \_\_\_\_\_

## FORESTRY

Report Only This Year's Extension Activities that are Supported by Records

95. Number of method demonstration meetings held	95
96. Number of adult result demonstrations completed or carried into the next year	96
97. Number of 4-H Club members enrolled	(a) Boys ..... (b) Girls ..... 97
98. Number of 4-H Club members completing	(a) Boys ..... (b) Girls ..... 98
99. Number of transplant beds cared for by club members completing	99
100. Number of acres farm wood lot managed by club members completing	100
101. Number of new forest or farm woodland areas planted according to recommendations	101
102. Acres involved in preceding question	102
103. Number of farms assisted in forest or wood-lot management	103
104. Acres involved in preceding question	104
105. Number of farms planting windbreaks according to recommendations	105
106. Number of farms following recommendations as to control of white-pine blister rust	106
107. Number of farms assisted in other ways relative to forestry (specify below)	107

(Use space below for State questions not listed above)

## RODENTS, OTHER ANIMAL PESTS, AND MISCELLANEOUS INSECTS

Report Only This Year's Extension Activities that are Supported by Records

(Do not include work reported under "Crop" and "Livestock" headings)

Item	(a)	(b)	(c)	
	Rodents	Other animal pests	Insects	
108. Number of method demonstration meetings held				108
109. Number of result demonstrations completed or carried into the next year				109
110. Pounds of poison used				110

## AGRICULTURAL ENGINEERING

(Farm and Home)

Report Only This Year's Extension Activities that are Supported by Records

111. Number of method demonstration meetings held.....		111
112. Number of adult result demonstrations completed or carried into the next year.....		112
113. Number of 4-H Club members enrolled.....	{ (a) Boys..... (b) Girls..... }	113
114. Number of 4-H Club members completing.....	{ (a) Boys..... (b) Girls..... }	114
115. Number of farms following recommendations in installing drainage systems.....		115
116. Acres drained by such systems.....		116
117. Number of farms following recommendations in installing irrigation systems.....		117
118. Acres irrigated by such systems.....		118
119. Number of farms building terraces and soil-saving dams to control erosion according to recommendations.....		119
120. Acres on which soil erosion was so prevented.....		120
121. Number of farms clearing land of stumps or boulders according to recommended methods.....		121
122. Number of families assisted with house-planning problems.....		122
123. Number of dwellings constructed according to plans furnished.....		123
124. Number of dwellings remodeled according to plans furnished.....		124
125. Number of sewage-disposal systems installed according to recommendations.....		125
126. Number of water systems installed according to recommendations.....		126
127. Number of heating systems installed according to recommendations.....		127
128. Number of lighting systems installed according to recommendations.....		128
129. Number of farms on which buildings other than dwellings were constructed or remodeled this year according to plans furnished.....		129
130. Number of buildings involved in preceding question.....	{ (a) Dairy barns..... (b) Hog houses..... (c) Poultry houses..... (d) Silos..... (e) Other..... }	130
130½. Number of farms or homes following recommendations on maintenance and repair of machinery.....		130½
130½. Number of machines involved in preceding question.....	{ (a) Tractors..... (b) Tillage implements..... (c) Harvesters and threshers..... (d) Other..... }	130½
130¾. Number of farms employing better types of machinery or equipment recommended by extension agent.....		130¾

## POULTRY, DAIRY CATTLE, BEEF CATTLE, SHEEP, SWINE, AND HORSES

Report Only This Year's Extensive Activities that are Supported by Records

Item	(a) Poultry	(b) Dairy cattle	(c) Beef cattle	(d) Sheep	(e) Swine	(f) Horses and mules
131. Number of method demonstration meetings held						131
132. Number of adult result demonstrations completed or carried into the next year	5			B		132
133. Number of animals involved in these completed adult result demonstrations						133
134. Total profit or saving on adult result demonstrations completed						134
135. Number of 4-H Club members enrolled						135
136. Number of 4-H Club members completing						136
137. Number of animals involved in 4-H Club work completed						137
138. Number of farms assisted in obtaining purebred sires	2					138
139. Number of farms assisted in obtaining high-grade or purebred females						139
140. Number of bull, boar, ram, or stallion circles or clubs organized						140
141. Number of members in preceding circles or clubs						141
142. Number of herd or flock improvement associations organized or reorganized						142
143. Number of members in these associations						143
144. Number of farms not in associations keeping performance records of animals						144
(Use space below for State questions not listed above)						

## POULTRY

No. leaders trained: adult \_\_\_\_\_ 4-H club \_\_\_\_\_ Total profit on 4-H club \_\_\_\_\_  
 Total profit on adult club \_\_\_\_\_ Result demonstrations completed \_\_\_\_\_  
 No. birds culled \_\_\_\_\_ Increase in egg production from better feeding \_\_\_\_\_  
 Profit made by farm flock improvement contestants \_\_\_\_\_  
 Profit made from other poultry cooperators \_\_\_\_\_  
 Value of 4-H club poultry \_\_\_\_\_ Profit from 4-H club poultry \_\_\_\_\_

## FARM MANAGEMENT, CREDIT, INSURANCE, AND TAXATION

Report Only This Year's Extension Activities that are Supported by Records

145. Number of method demonstration meetings held.....	145	
146. Number of adult result demonstrations completed or carried into the next year.....	146	
147. Number of 4-H Club members enrolled in account work.....	147	
(a) Boys.....		
(b) Girls.....		
148. Number of 4-H Club members completing.....	148	
(a) Boys.....		
(b) Girls.....		
149. Number of farms keeping farm accounts throughout the year under supervision of agent.....	149	
150. Number of farms keeping cost-of-production records under supervision of agent.....	150	
151. Number of farms assisted in summarizing and interpreting their accounts.....	151	
152. Number of farms assisted in making inventory or credit statements.....	152	
153. Number of farm business or enterprise survey records taken during year.....	153	
154. Number of farms making recommended changes in their business as result of keeping accounts or survey records.....	154	
155. Number of other farms adopting cropping, livestock, or complete farming systems according to recommendations.....	155	
156. Number of farms advised relative to leases.....	156	
157. Number of farms assisted in obtaining credit.....	157	
158. Number of different farms assisted in using outlook or other timely economic information as a basis for readjusting farm operations.....	158	
159. Number of farms in preceding question making readjustments in—.....	159	
(a) Wheat.....	(g) Dairy cattle.....	(m).....
(b) Corn.....	(h) Beef cattle.....	(n).....
(c) Cotton.....	(i) Hogs.....	(o).....
(d) Potatoes.....	(j) Sheep.....	(p).....
(e) Tobacco.....	(k) Poultry.....	(q).....
(f) Truck crops.....	(l).....	(r).....

(Use space below for State questions not listed above)

---



---



---



---



---



---



---



---



---



---

## MARKETING (FARM AND HOME)

Report Only This Year's Extension Activities that are Supported by Records

Item	(a) Grain and feed	(b) Cotton	(c) Dairy products	(d) Livestock	(e) Fruits and vegetables	(f) Poultry and eggs	(g) Home products	(h) Other
160. Number of cooperative-marketing associations or groups organized during the year.....								160
161. Number of cooperative-marketing associations or groups previously organized assisted by extension agent this year.....							1	161
162. Membership in associations organized and assisted (161 and 162).....							8	162
163. Value of products marketed by all associations worked with.....	\$.....	\$.....	\$.....	\$.....	\$.....	\$.....	\$831.25	163
164. Value of supplies purchased by all associations worked with.....	\$.....	\$.....	\$.....	\$.....	\$.....	\$.....	\$.....	164
Number of cooperative-marketing associations or groups assisted with problems of—								
165. Preliminary analysis.....								165
166. Organization.....								166
167. Accounting and auditing.....								167
168. Financing.....								168
169. Business policies.....								169
170. Production to meet market demand.....								170
171. Reduction of market losses.....								171
172. Use of current market information.....								172
173. Standardizing.....								173
174. Processing or manufacturing.....								174
175. Packaging and grading.....								175
176. Loading.....								176
177. Transporting.....								177
178. Warehousing.....								178
179. Keeping membership informed.....								179
180. Merging into larger units.....								180
Number of farms or homes not in cooperative associations or groups assisted with problems of—								
181. Standardizing.....								181
182. Packaging and grading.....								182
183. Use of current market information.....								183

(Use space below for State questions not listed above)

## FOODS AND NUTRITION

Report Only This Year's Extension Activities that are Supported by Records

184. Number of method demonstration meetings held ..... 41 184
185. Number of adult result demonstrations completed or carried into the next year ..... 55 185
- |  | Food selection and preparation | Food preservation |
|--|--------------------------------|-------------------|
|  | (a)                            | (b)               |
| 186. Number of 4-H Club members enrolled   | (1) Girls                      | 50                |
|  | (2) Boys                       |                   |
| 187. Number of 4-H Club members completing | (1) Girls                      | 50                |
|  | (2) Boys                       |                   |
188. Number of homes assisted in planning family food budget for a year ..... 188
189. Number of homes budgeting food expenditures for a year ..... 189
190. Number of homes balancing family meals for a year ..... 61 190
191. Number of homes improving home-packed lunches according to recommendations ..... 191
192. Number of schools following recommendations for a hot dish or school lunch ..... 192
193. Number of children involved in preceding question ..... 193
194. Number of homes using improved methods in child feeding ..... 194
195. Number of individuals adopting recommendations for corrective feeding (such as weight control, anemia, pellagra, and constipation) ..... 195
196. Number of jars of canned products preserved by 4-H Club members ..... 1306 196

(Use space below for State questions not listed above) p. 942

Women Girls

- a. No. members ~~10%~~ normal weight ..... *no. 300 canned products preserved*
- b. How many members practically live at home by producing all possible food at home? ..... 77
- c. No. pressure cookers purchased during the past year ..... 4
- d. No. members planning canning budget ..... 7
- e. No. homes where vegetable gardens were planted ..... 65
- f. No. homes planting gardens for first time or greatly enlarged this yr. ..... 47
- g. No. dems. given by leaders with agent present ..... 20
- h. No. dems. given by leaders with agent absent ..... 7 6
- i. No. dems. where leaders assisted agent ..... 8
- j. No. dems. given by club members ..... 5
- k. No. food groups; W 5 0 3; F. No. leaders trained ..... 10 5
- m. No. county leader training meetings held ..... 4 1
- n. Total attendance at county leader training meetings ..... 40 5
- o. No. food groups in small rural schools \_\_\_\_\_; number members \_\_\_\_\_;  
No. others below club age \_\_\_\_\_
- p. No. members improving weight \_\_\_\_\_; health \_\_\_\_\_; posture \_\_\_\_\_

## CHILD TRAINING AND CARE

Report Only This Year's Extension Activities that are Supported by Grants

197. Number of method demonstration meetings held..... 197
198. Number of adult result demonstrations completed or carried into the next year..... 198
199. Number of groups devoting major part of program to child training and care..... 199
200. Membership in these groups..... 200
201. Number of 4-H Club members enrolled..... 201
- (a) Girls.....
- (b) Boys.....
202. Number of 4-H Club members completing..... 202
- (a) Girls.....
- (b) Boys.....
203. Number of homes improving habits of school children (other than reported under "Foods and Nutrition" and "Home Health and Sanitation")..... 203
204. Number of homes substituting positive methods of discipline for negative ones..... 204
205. Number of homes providing recommended play equipment..... 205
206. Number of homes making recommended physical adjustments to better meet children's needs..... 206
207. Number of homes adopting better adult habits with respect to development of children..... 207

(Use space below for State questions not listed above)

## CLOTHING

Report Only This Year's Extension Activities that are Supported by Records

208. Number of method demonstration meetings held		208
209. Number of adult result demonstrations completed or carried into the past year		209
210. Number of 4-H Club members enrolled	(a) Girls (b) Boys	210
211. Number of 4-H Club members completing	(a) Girls (b) Boys	211
212. Number of individuals following recommendations in improving construction of clothing	(a) Women (b) Girls	212
213. Number of individuals using a clothing budget	(a) Women (b) Girls (c) Boys	213
214. Number of individuals making garments for themselves	(a) Women (b) Girls	214
215. Number of individuals improving children's clothing according to recommendations	(a) Women (b) Girls	215
216. Number of individuals following recommendations in improving care, renovation, and remodeling of clothing	(a) Women (b) Girls	216

- |  | WOMEN | GIRLS |
|--|-------|-------|
| a. Number members who kept a clothing account                                  | _____ | _____ |
| b. Number members who learned to shop more wisely                              | _____ | _____ |
| c. Number members who improved selection of dress as to color, line and design | _____ | _____ |
| d. Number members who learned to wear sensible walking shoes                   | _____ | _____ |
| e. Number members who adopted better posture                                   | _____ | _____ |
| f. Number members who do their own mending: <del>all</del>                     | _____ | _____ |
| Part W _____ G _____ Family Mending  |       |       |
| g. Number demonstrations given by leader with agent present                    | _____ | _____ |
| Number demonstrations given by leader without agent present                    | _____ | _____ |
| h. Number demonstrations where leader assisted the agent                       | _____ | _____ |
| i. Number demonstrations given by club members                                 | _____ | _____ |
| j. Number people (other than club members) influenced to adopt new practices   | _____ | _____ |
| k. Number clothing groups  | _____ | _____ |
| l. Number leaders trained  | _____ | _____ |
| m. Number county leader training meetings held                                 | _____ | _____ |
| n. Total attendance at county leader training meetings                         | _____ | _____ |
| o. Work done - garments made W _____ G _____ Garments remodeled                | _____ | _____ |
| Garments dry cleaned W _____ G _____ Hats or caps made                         | _____ | _____ |

HOME MANAGEMENT

Report Only This Year's Extension Activities that are Supported by Branch

217. Number of method demonstration meetings held	15	217
218. Number of adult result demonstrations completed or carried into the next year	55	218
219. Number of 4-H Club members enrolled	(a) Girls _____ (b) Boys _____	219
220. Number of 4-H Club members completing	(a) Girls _____ (b) Boys _____	220
221. Number of homes keeping home accounts according to a recommended plan		221
222. Number of homes budgeting expenditures in relation to income according to a recommended plan	5	222
223. Number of homes following recommended methods in buying for the home		223
224. Number of women following a recommended schedule for home activities		224
225. Number of kitchens rearranged for convenience according to recommendations	23	225
226. Number of homes following recommendations in obtaining labor-saving equipment		226
227. Number of homes adopting recommended laundering methods	43	227
228. Number of homes adopting recommended methods in care of house		228
229. Number of homes assisted in an analysis of their home conditions with reference to a standard of living		229
230. Number of homes assisted in making adjustments in home making to gain a more satisfactory standard of living		230

(Use space below for State questions not listed above)

	Women	Girls
5-a Number homes improving storage spaces.....	_____	_____
5-b Number articles labor-saving equipment home-made.....	_____	_____
Ready-made.....	_____	_____
5-c Number homes adjusting heights of working surfaces.....	_____	_____
5-d Number kitchens improved in appearance.....	20	_____
5-e Total number kitchens improved.....	23	_____
5-f Estimated number other people influenced.....	23	_____
5-g Number demonstrations by leaders, agent present.....	48	_____
5-h Number demonstrations by leaders, agent absent.....	_____	_____
5-i Number demonstrations with which leaders assisted agent.....	5	_____
5-j Number home management groups in county.....	5	_____
5-k Number leaders trained.....	_____	_____
5-l Number county leader-training meetings held.....	_____	_____
5-m Total attendance of loaders.....	_____	_____

## HOME FURNISHINGS

Report Only This Year's Extension Activities that are Supported by Donors

231. Number of method demonstration meetings held.....	41	231
232. Number of adult result demonstrations completed or carried into the next year.....	115	232
233. Number of 4-H Club members enrolled.....	(a) Girls 135 (b) Boys	233
234. Number of 4-H Club members completing.....	(a) Girls 115 (b) Boys	234
235. Number of individuals improving the selection of household furnishings.....	(a) Women (b) Girls 80	235
236. Number of individuals following recommendations in improving methods of repairing, remodeling, or refinishing of furniture.....	(a) Women (b) Girls 67	236
237. Number of individuals following recommendations in improving treatment of windows (shades, curtains, draperies).....	(a) Women (b) Girls 70	237
238. Number of individuals following recommendations in improving arrangement of rooms (other than kitchens).....	(a) Women (b) Girls 92	238
239. Number of individuals improving treatment of walls, woodwork, and floors.....	(a) Women (b) Girls 57	239

(Use space below for State questions not listed above)

		Women	Girls	
6-a	No. improving selection, arrangement of pictures, accessories.....		82	
6-b	How many used dyes in making over old materials?.....		45	
6-c	No. improving home storage spaces.....		51	
6-d	<b>WORK DONE</b>	: Number : Actual Cost : Amount Saved		
		Women; Girls; Women; Girls; Women; Girls		
	Chairs and stools seated.....	99	22.75	22.75
	Articles slip-covered or upholstered.....	16	6.00	3.50
	Furniture repaired, remodeled, refinished. ....	131	28.90	28.40
	Window treatments improved.....	54	13.40	14.80
	Walls, woodwork, floors.....	52	99.00	35.00
	Articles or sets of linens made.....	91	31.10	19.30
	Rugs, mats, chair seats made.....	79	12.90	8.95
	Other articles made or made over.....	215	12.75	14.00
	Ready-made articles secured.....	42	6.10	
6-e	Total no. dif. rooms imp: W <u>G 100</u> ; 6-f Est. no. other people influenced.....			250
6-g	No. dem. by leaders, agent present: W <u>G 11</u> ; 6-h agent absent.....			15
6-i	No. dem. with which leaders assisted agent.....			25
6-j	No. dem. given by club members.....			5
6-k	No. house furn. groups in county: W <u>G 5</u> ; 6-l leaders trained.....			6
6-m	No. co. leader training meetings: W <u>G 5</u> ; 6-n Total attend. leaders..			22

## HOME HEALTH AND SANITATION

Report Only This Year's Extension Activities that are Supported by Records

240. Number of method demonstration meetings held .....	240
241. Number of adult result demonstrations completed or carried into the next year .....	241
242. Number of 4-H Club members enrolled .....	{ (a) Girls ..... } 242 { (b) Boys ..... }
243. Number of 4-H Club members completing .....	{ (a) Girls ..... } 243 { (b) Boys ..... }
244. Number of 4-H Club members not in special health clubs who participated in definite health-improvement work .....	{ (a) Girls ..... } 244 { (b) Boys ..... }
245. Number of individuals following recommendations as to complete health examination .....	245
246. Number of individuals improving health habits according to recommendations .....	246
247. Number of individuals improving posture according to recommendations .....	247
248. Number of individuals adopting recommended positive preventive measures to improve health (immunization for typhoid, diphtheria, smallpox, etc.) .....	248
249. Number of homes adopting better home-nursing procedure according to recommendations .....	249
250. Number of homes installing sanitary closets or outhouses according to recommended plans .....	250
251. Number of homes screened according to recommendations .....	251
252. Number of homes following other recommended methods of controlling flies, mosquitoes, and other insects .....	252

(Use space below for State questions not listed above.)

7-a How many water systems have been installed according to recommendations? \_\_\_\_\_

## COMMUNITY OR COUNTRY-LIFE ACTIVITIES

Report Only This Year's Extension Activities that are Supported by Records

253. Number of communities assisted in making social or country-life surveys, or in scoring themselves or their community organizations.....	253
254. Number of country-life conferences or training meetings conducted for community leaders.....	254
255. Number of community groups assisted with organizational problems, programs of activities, or meeting programs.....	255
256. Number of communities developing recreation according to recommendations.....	256
257. Number of community or county-wide pageants or plays presented.....	257
258. Number of community houses, clubhouses, or community rest rooms established.....	258
259. Number of communities assisted in improving hygienic or public-welfare practices.....	259
260. Number of school or other community grounds improved in accordance with plans furnished.....	260
261. Number of 4-H Clubs engaging in community activities, such as improving school grounds, conducting local fairs, etc.....	3 261
261½. Total number of different communities assisted in connection with the community or country-life work reported on this page.....	3 261½

(Use space below for State questions not listed above)

## BEES, WEEDS, HANDICRAFT, RABBITS, AND MISCELLANEOUS

Under This Heading Report Other Lines of Work not Included in the Preceding Pages, Such as Bees, Weeds, Handicraft, and Similar Work, I. e., any Other Information that can be Reported Statistically and that Will Help to Give a Complete Account of the Year's Work

Item	(a) Bees	(b) Weeds	(c) Handicraft	(d) Rabbits	(e) <sup>1</sup>
262. Number of method demonstration meetings held.....					262
263. Number of adult result demonstrations completed or carried into next year.....					263
264. Number of 4-H Club members enrolled.....	(1) Boys				264
	(2) Girls				
265. Number of 4-H Club members completing.....	(1) Boys				265
	(2) Girls				

<sup>1</sup>Indicate project by name.