

VIRGINIA

LANCASTER COUNTY

COUNTY AGENT

ANNUAL REPORT - 1935

Index		Page
6 H 1.3632	General meetings, community . . . . .	8
13 e 13	Tomatoes . . . . .	7-8
17 a 1	Cooperative work with veterinarians .	12

WIV--3

**REPORT FILES**  
OFFICE COOPERATIVE  
EXTENSION WORK

ANNUAL NARRATIVE REPORT

OF

C. CARTER CHASE, COUNTY AGENT

LANCASTER COUNTY

VIRGINIA

1935

COUNTY AGENT ANNUAL REPORT

TABLE OF CONTENTS

Cover -----	1
Table of Contents -----	2
Status of Extension Work in Lancaster County -----	3
Summary of Activities and Accomplishments -----	4
4-H Clubs -----	8
Tomatoes -----	8
Cucumbers -----	10
Poultry -----	10
Home Gardens and Subsistence Farming -----	11
A.A.A. -----	12
Farm Credit -----	12
Livestock and General Farming Activities -----	13
Corrotoman Farmers Cooperative, Inc. -----	14
Miscellaneous Activities -----	15
Outlook And Recommendations for 1936 -----	15

STATUS OF EXTENSION WORK IN LANCASTER COUNTY

The Agricultural Program in Lancaster is planned by the Lancaster County Agricultural Advisory Board, which consists of twenty-five members, five from each of the five agricultural communities of the county. In addition to this the County Agent has the assistance of five 4-H Club leaders, committeemen of the control association, the editor of the local paper and business men in the county.

The sympathetic interest of all of the people of the county towards the agricultural program and Extension work has been very gratifying to the Agent, though somewhat compelling in the amount of work required. Sometimes one is led to question the usefulness of some of the things required and if we would seek a financial answer, an unfavorable one would often be in order, but if we seek an answer in terms of the value of human relationships, we are compelled to answer favorably and to ask for guidance to carry on to the best of our ability. As a case in point, Jim Smith in an outlying portion of the county, is an honest upright citizen, who finds himself without finances to carry on a one horse farming operation with which to supplement his income as a waterman and so eke out a meager living for his family. He is recommended to the Rehabilitation Committee and is passed. The Rural Supervisor calls on Jim Smith and explains the Rehabilitation Program and finds that Jim Smith abhors debt and is unwilling to commit himself until he can talk with the County Agent confidentially. This probably means a forty mile drive for the Agent over the worst county roads, as Jim Smith has no way of coming to the County Agent's office. The fact that Extension work has so captured the imagination and confidence of people of Jim Smith's type makes this an important piece of work and one that we cannot neglect if we are eventually to reach the masses of the people with our educational program.

The 804 farm and home visits, and 1386 office calls represent the seeking of advice by farmers as to whether or not to request an AAA Contract, how to obtain credit, help from the Rehabilitation Corporation, Relief Gardens and many other problems in addition to those relating to strictly agricultural problems.

SUMMARY OF ACTIVITIES AND ACCOMPLISHMENTS

- I. Organize and conduct four 4-H Clubs.
  - I. Four 4-H Clubs organized. Total of 146 members. Twenty-eight meetings held. Eighty-two members completed. Total cash income of \$1854.40. Profit \$1027.79.
  - A. 4-H Club Council organized. Two meetings held.
  - B. Send delegations of 4-H Club members to Jamestown and Blackburg Camps.
    - B. Fifteen members attended Jamestown 4-H Camp. Fifteen members signed up to attend State Short Course (cancelled by epidemic). Forty-three club members taken on trip to State Fair. Seven members exhibited at Northern Neck Fair.
- II. Further the economical production of tomatoes.
  - A. By holding meetings.
    - A. County-wide meeting held at which outlook for tomatoes and information gained from cost account records were discussed. Cooperated with negro farm leaders and representatives of Hampton Institute in agricultural conference at three meetings, at which County Agent discussed the outlook for tomatoes.
  - B. Supervising the keeping of cost accounts.
    - B. Supervised the keeping of sixty cost account records with assistance of Extension Division Specialists.
  - C. Seed source tests.
    - C. Seed source tests conducted with the assistance of Virginia Truck Experiment Station and the Extension Specialists. Field meeting held attended by fifty-three seedmen and farmers.
  - D. By plant bed, seed and fertilizer demonstrations.
    - D. Recommended methods of plant bed sowing and dusting, use of seed from proven sources and fertilizer of approved analyzes becoming a general practice in the county.
- III. Not planned.
  - II. Two 4-H Club members enrolled. Through the entrance of a large pickle company into the county asking for pickle contracts at a late date, assistance was rendered to growers by meeting addressed by specialist in cucumber production, two circular letters to all contract signers giving information on cucumber production and by method demonstration and circular letter on proper harvesting of the crop.

- |  |  |
|--|--|
| <p>IV. Encourage the continuance of commercial and farm flocks of poultry raising.</p> <p>A. By holding meetings.</p> <p>B. Encourage the marketing of quality products.</p> <p>C. By the elimination of disease and parasites.</p> <p>D. By use of improved methods of breeding and production.</p> | <p>IV. Thirty-six 4-H Club members enrolled.</p> <p>A. One-day Poultry Institute held.</p> <p>B. Marketing of quality eggs encouraged by three circular letters and distribution of thermometers to those who requested them, with which to check temperature of egg storage.</p> <p>C. Thirty poultrymen followed recommendations for the elimination of disease and parasites. Three flocks in county tested for pullorum diseases, two for first time. One large flock supervised by specialist under R.O.P.</p> <p>D. Number of poultrymen advised and instructed in better methods of breeding and production through culling and selection. County Agent and two poultrymen attended Northeastern State Poultry Federation and County Agent and five poultrymen attended State Poultry Federation.</p> |
| <p>V. Encourage the growing of home gardens and subsistence farming.</p> <p>A. Send out monthly garden letters.</p> <p>B. In meetings.</p> <p>C. By cooperation with the Rural Rehabilitation Corporation.</p>   | <p>V. Thirty-three 4-H Club members enrolled.</p> <p>A. Forty copies of monthly garden letters sent out for six months.</p> <p>B. Relief Garden Director assisted in three meetings on storage of winter vegetables. Assisted negro leaders in agricultural conference which featured Live-At-Home program.</p>  |
| <p>1. In selection of cases.</p>   | <p>1. Cooperated with the Rural Rehabilitation Corporation in selection of cases in committee meetings and through conference with workers.</p>  |

2. In establishment of sweet potato storage house.

2. Cooperated in establishing a sweet potato house by assisting in plans for purchasing and remodeling of building. Purchase of 125 bushels of certified seed. Furnished plans for two flue heated beds. Supervised the production of potatoes on twelve farms of sweet potatoes for storage for the first time, which resulted in the production of 1790 bushels of sweet potatoes properly stored and cured.

3. In establishing a lime grinding plant.

3. Not accomplished.

VI. Conduct Corn-Hog Campaign and supervise the County Corn-Hog Control Association.

VI. Corn-Hog campaign conducted in county, which resulted in sign-up of forty members for reduction of 226 acres of corn and 61 hogs, with benefit payments of \$2789.80. Corn-Hog Referendum conducted with 29 votes by contract signers and 17 votes by non-signers.

Bring all AAA programs, that may affect the county to the attention of the people and conduct campaigns when needed.

Assisted Wheat Control Association with 20 old contracts and resign up of Wheat Campaign conducted with a total of 26 applications received. Wheat Referendum discussed in meetings and through circular letters, resulting in a vote of 20 contract signers and 38 non-signers.

VII. Advise farmers relative to Government Financial Agencies and aid in the filing of applications for farm and crop loans.

VII. Large number of farmers advised relative to the Farm Credit Administration, which resulted in 90 applications for Emergency Crop loans being received through the office, which resulted in a total of \$3110.00 being loaned. Attended meetings of Board of Directors of local F.L.A. Association. Advised a number of farmers relative to credit through this agency.

VIII. Not planned.

VIII. Organized Corrotoman Farmers Cooperative, Inc. Assisted them in securing membership and keeping same informed and securing credit for financing storage operation.

Livestock and general farming activities may be summarized as follows; Nineteen 4-H club members enrolled in Livestock projects. Cooperated with State Veterinarian in collecting information and checking the presence of encephalomyelitis in the county. Assisted in securing owners of horses to use experimental vaccine for prevention of this disease. Secured the service of veterinarian to demonstrate treatment of horses for internal parasites. Assisted two club members in placing purebred bull calves, which they had won, in county herds. Vaccinated hogs for 139 owners against cholera. Diagnosed cases suspected of having cholera. Only two cases reported in county for year, both of which were stopped on premises where found by vaccination. Circularized sheep owners in county, with monthly notices of treatment for internal parasites.

Advised farmers relative to general rotation practices, uses of fertilizer and lime, proper varieties of seed and other general information. Encouraged the production of lespedeza through demonstrations of both the annuals and sericea.

Served as chairman of Advisory Committee on Relief Activities. Wrote 875 individual letters and distributed 7163 copies of 54 different circular letters. Received 830 telephone calls and 1386 office calls. Traveled 14163 miles in discharge of official duty and made 804 farm and home visits.

Cooperated with Agents in three other counties in organization and conduct of Northern Neck Fair, as a purely educational fair, sponsoring agricultural exhibits of adults, homemakers, 4-H Club members and students in vocational agriculture.

#### 4-H CLUBS

Four-H Club work is conducted through the medium of four organized clubs and a County Council. One hundred and forty-six members were enrolled in various projects, principally, poultry, crops and gardens. Twenty-eight club meetings were held by the Agent with the assistance of Mr. W. A. Turner, Assistant County Agent of Essex County, who spent fourteen days on 4-H Club work in Lancaster County. Most of the meetings were held at schools and on school time, though three picnics, an oyster roast, a weenie-roast and a truck ride to a nearby beach were also enjoyed. Fifteen members and one leader attended the Jamestown 4-H Camp and fifteen others planned to attend the State Short Course, which was called off because of the epidemic of infantile paralysis in the state. Forty-three club members and two leaders chartered a school bus and attended the State Fair. Seven 4-H Club members made exhibits at the Northern Neck Fair, four of which were purebred Guernsey calves. Eighty-two members completed their project work and submitted reports showing an income of \$1854.40, with a net profit of \$1027.79.

The importance of club work becomes more evident each year as those who have been club members grow into adults and take their places in the economic and social life of the community. It gives to the Extension program that background of confidence and stability so necessary in an educational program. The opportunity for self expression and the development of leadership ability are not equalled by any other department of our educational system. The inspiration and wholehearted cooperation of the voluntary leadership in club work by both adults and juniors are essential to the development of these opportunities. This leadership has been more valuable during the past year than ever before and indicates a fuller development of the club program during the coming year.

#### TOMATOES

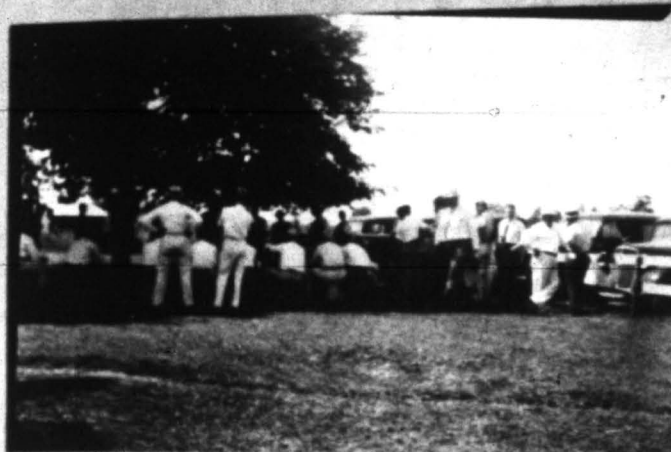
Work on improved methods of producing tomatoes for canning has consistently been a major project of the Extension program in Lancaster County for the past nine years. This work has centered around the use of disease resistant varieties suitable for canning, better methods of growing plants, use of larger quantities of the proper analysis of fertilizer, better cultural methods and a better system of marketing. To these have been added in the past three years supervised cost account records on from fifty to sixty crops each year. An analysis of these records have furnished the basis for educational meetings each winter dealing with the tomato outlook and production problems.

As a result of method and result demonstrations conducted throughout the county, the following may be listed as becoming the general practice:

1. Seed of the Marglobe variety, obtained largely from sources shown to be desirable in seed source tests, are used by the majority of growers.
2. Better spacing of plants, more care with the selection of the plant bed, the use of a mulch, and disease and insect control by dusting is generally practiced.
3. The value of early planting and frequent shallow cultivations are being more and more recognized.
4. Practically all of the fertilizer bought for tomatoes is of an approved analysis, though insufficient quantities are still used.
5. Attempts to interest growers in marketing the crop on a basis of grade has not met with as much success as other practices advocated up until this year. Abandonment of the contract system of selling and a very low open market price this season made a very favorable showing for those farmers, who did sell on grade, and makes it seem a fair prediction that there will be more interest next year in marketing the crop on a graded basis.

The keeping of sixty cost account records by farmers this year in addition to its value to the individual farmers is valuable in analyzing the tomato problems of the county and as a basis for next year's program. This work is made possible through the assistance of the Farm Management Demonstrator and the Vegetable Specialist of the Extension Division.

The conduct of a seed source test in cooperation with the Virginia Truck Experiment Station and the Vegetable Specialist of the Extension Division furnished an excellent opportunity for a field meeting, which was attended by fifty-three growers and seedmen. These tests have not only served to inform the farmers as to the value of securing seed from a good source, but have served to interest the seedmen in the necessity of furnishing a better product if they hope to maintain their patronage in this territory.



At field meeting.

#### CUCUMBERS

In January a letter was written to a large pickle company relative to contracting for pickles in the county. As very little interest was shown by the company, the project was dropped. However, late in May an agent of the company arrived and secured contracts for sufficient storage to justify opening a receiving station. The County Agent cooperated by having the Specialist in Vegetable Gardening address the growers and others interested in the project and by sending growers three circular letters during the season containing information on the proper handling of the crop. In addition to this the agent gave several method demonstrations and contacted a number of growers relative to proper grading of the crop. Without this information and encouragement, a number of growers would have become discouraged and abandoned the crop. At the end of the harvesting season a questionnaire was sent to all growers from which information was obtained as a guide to growers next year if the crop is continued. A majority of the growers received sufficient encouragement to want to continue the crop, provided a market can be provided. At this date the pickle company has not announced its decision for next year.

#### POULTRY

While poultry has represented one of the major projects of the Extension Program for the past nine years, it has not received as much organized effort this year as in past years. It still ranks high in the number of telephone and office calls and in home visits made. The principal accomplishments during this year are as follows: (1) Thirty poultrymen followed recommendations as to control of diseases and parasites through use of sanitation and fresh ground for rearing young stock. (2) Two new flocks were tested for pullorum disease under the Division of Markets. (3) One outstanding breeder and hatchery was given supervision under the R.O.P. Program by the Extension Division Specialist. (4) Representation by two poultrymen at the Northeastern States Poultry Council meeting, and by five poultrymen in addition to the County Agent at the State Poultry Federation indicates an active interest in poultry problems. (5) The egg grading station, a product of the Extension Program of past years continued to function successfully and with increased volume. (6) Circular letters were sent to all poultrymen urging greater care in the production of quality eggs and thermometers were distributed to those who desired them with which to check the temperature of egg storage.

The Extension Program is recognized as the sponsor of the poultry development in this section and most of the poultry problems are laid at the County Agent's door for solution. The solution of these problems often leads to the following of recommendations which in turn result in a demonstration that is passed on from neighbor to neighbor. Thus the spread of the influence of the poultry program is greater than can be measured through reported and recorded demonstrations.

#### HOME GARDENS AND SUBSISTENCE FARMING

Work on this project was largely that of acting in an advisory capacity and cooperating in the program of the Relief Garden Director under the V.E.R.A. and the farm supervisor under the Rural Rehabilitation Corporation. The Relief Garden Director had 216 subsistence gardeners under her supervision. Application cards for 46 of these gardens were signed in the County Agent's office. Arrangements were made by the County Agent for three canning demonstration meetings, which were attended by sixty-eight people. The County Agent addressed three meetings held by the Relief Garden Director on the Winter Storage of Vegetables. Thirty-three club members were enrolled in the garden project and forty copies of monthly garden letters prepared by the Extension Division Specialist were sent out for six months. Negro leaders in the county were assisted with an agricultural conference addressed by members of the faculty of Hampton Institute and the County Agent, which featured the growing of home supplies.

The program of Rural Rehabilitation has been an important one in Lancaster, first because a large number of small farmers had lost their work stock in an epidemic and were without finances to replace them and second because this was one of the first counties in which this program was initiated. The County Agent has cooperated by serving as a member of the Rehabilitation Committee in the selection of numerous cases, from which fifty have been accepted upon investigation; through numerous conferences with workers in this division; and through interviews and visits with applicants and clients. In addition to this the agent has cooperated with members of the Rehabilitation staff in the purchase and remodeling of a sweet potato storage house and furthered the project by the formation of a cooperative growers organization to purchase the storage house from the Rehabilitation Corporation.

A.A.A.

The Corn-Hog Campaign was conducted in the county by the County Agent, who acted as Secretary of the Control Association. This campaign resulted in a sign up of forty members, the reduction of 226 acres of corn and 61 hogs, with benefit payments of \$2789.80. County Agent acted in a supervisory capacity for the twenty wheat contracts in the county by keeping contract signers informed as to the program, by conferences with the Supervisor and by delivering checks. A campaign for the resign up was conducted, which resulted in twenty-six applications being received and duly submitted to the Control Association.

The educational campaign and referendum on both corn-hog and wheat programs were conducted in the county. The Corn-Hog Referendum resulted in twenty-nine votes being cast by signers and seventeen by nonsigners. The Wheat Referendum resulted in all the contract signers casting a vote and thirty-eight nonsigners voting.

While these programs have not benefited the majority of the farmers directly, it has served as a good medium through which to bring information to the farmers and with which to stimulate voluntary cooperation in the conduct of leaders in these associations and a knowledge on the part of the farmers of the need of a farm program.

FARM CREDIT

More small farmers were contacted through applications for credit than any other way. Ninety applications were received for Emergency Crop loans, which resulted in \$3110.00 being loaned in the County. County Agent supervised the receiving of these applications and had them duly acted upon by the local committee and submitted to the Field Agent of the Emergency Crop Loan office. County Agent advised a number of farmers, relative to the use of local P.C.A. Association and the securing of loans through the Federal Land Bank. County Agent regularly attended the meeting of the Directors of the Local Farm Loan Association and met and advised with the Farm Debt Adjustment Representative of the Resettlement Administration.

11

## LIVESTOCK AND GENERAL FARMING ACTIVITIES

Nineteen 4-H Club members were enrolled in livestock projects. Five purebred Guernsey calves were included in these projects, two of which were purebred bulls, which have since been placed at the head of local herds. Following the epidemic of encephlomyelitis, which occurred in this county in 1933 and reoccurred in 1934, the County Agent has cooperated in every way with the State Veterinarian to determine the manner and method of the spread of this disease. This work has consisted in reporting suspicious cases and locating on maps the premises where the disease occurred, as an aid to further knowledge of this disease and as the best known method of preventing it. The County Agent cooperated with the State Veterinarian in encouraging farmers in the infested area to use an experimental vaccine developed by the U. S. Bureau of Animal Industry. This resulted in over three hundred doses of this vaccine being used in this section. Fortunately for the owners but unfortunately as to the opportunity of checking the value of this vaccine, the disease did not reoccur in this area this year. The services of a private veterinarian was secured to demonstrate the treatment of horses for internal parasites by the use of carbon disulphide capsules. Farmers using this treatment were well pleased with the results. The anticipated renewal of this work was prevented by an automobile accident of the County Agent in November. Hogs were vaccinated by the serum virus method for 139 owners. Many cases suspected of being cholera were diagnosed. Only two cases proved to be cholera and in both of these cases the disease was stopped on the premises by vaccination. Cards prepared by the Extension Division Specialist were mailed monthly during the summer months to sheep owners, reminding them to treat their flocks against internal parasites.

One of the principal hobbies of the County Agent has always been the value of good crop rotation and the use of lime. No opportunity has been missed to advise farmers relative to good rotation practices and the proper use of lime and fertilizer in the rotation. Lespedeza has become an important crop in the county system of farming and the County Agent has furnished much information relative to this crop. Demonstrations have been conducted on the relative value of the annual varieties, Kobe and Korean, with the result that both varieties are popular in the county. Six demonstrations with sericea lespedeza are proving it to be a crop of considerable promise and it undoubtedly will find its place in the county's agriculture in the next few years.

CORROTOMAN FARMERS COOPERATIVE, INCORPORATED

One of the main problems considered yearly by the Agricultural Advisory Board of Lancaster County has been to find some truck crop that could be easily produced in the county and from which there would be a ready market to serve as a source of supplementary income to small farmers and part time farmers engaged in the sea food industry. Two projects have received attention this year which show promise of meeting this need. The cucumber project, discussed above, and the production of sweet potatoes for storage, which has been advocated in the county for the past five years. With the exception of one small storage house, privately owned, this project has made little progress in the past years. This year a favorable start can be recorded in the establishment of a sweet potato storage house at Ottoman, Virginia, through cooperation with the Rehabilitation Corporation and the formation of the Corrotoman Farmers Cooperative, Incorporated. This organization grew and stored 1790 bushels of choice potatoes. The organization has entered into a contract for the purchase of the storage house and this season's crop is nicely cured and ready for market. This project has received more careful supervision by the County Agent than any other project in the county this year. Besides the cooperation of the members of the staff of the Rural Rehabilitation Corporation, the cooperation of the Associate Economist and the Vegetable Specialist of the Extension Division has been secured. County Agent negotiated the purchase of 125 bushels of certified seed potatoes, furnished plans for the construction of two flue heated seed beds, gave demonstrations in the proper bedding of sweet potatoes, wrote and distributed four circular letters to all sweet potato growers and enabled them to master the details of handling the crop. Four demonstrations in the production of certified seed were enrolled and supervised with the result that all have passed bed and field inspection and now have a nice quantity of seed ready for the final inspection.

The formation of the cooperative (first in county) was closely supervised. The County Agent acted as secretary and assisted in securing the necessary papers for incorporation and secured credit through the Rehabilitation Corporation for the purchase and remodeling of building and secured funds locally to finance the curing and storing operations. It is believed that this project holds considerable promise for this section. The cooperation of the growers in the program has been good. The organization elected a good Board of Directors and progress is considered very satisfactory.

#### MISCELLANEOUS ACTIVITIES

County Agent served as chairman of the Advisory Committee on the Better Activities for the last six months of the year. Eight hundred and seventy-five individual letters were written and seven thousand, one hundred and sixty-three copies of fifty-four different circular letters were distributed. Sixty-three days were spent by fourteen different specialists of the Extension Division in the county during the year. One thousand, three hundred and eighty-six office calls, eight hundred and thirty telephone calls and eight hundred and four visits on three hundred and twenty-three different farms were made during the year.

County Agent cooperated with Agents in three other counties in organization and conduct of the Northern Neck Fair, as a purely educational fair, sponsoring agricultural exhibits of adults, homemakers, 4-H Club members and students in vocational agriculture.

#### OUTLOOK AND RECOMMENDATIONS FOR 1936

Lay the foundation for sound county agricultural planning through discussion groups in five agricultural communities of the county.

Continue 4-H Club work with higher standards of achievements in the county through a County Club Council and at least four organized clubs.

Hold a conference with at least one group of tomato growers, relative to the establishment of a cooperative cannery. If interest justifies, undertake to set up such a cooperative.

Continue cost account records on the tomato crop and further the economical production of tomatoes through demonstrations and the continuation of the seed source test.

Stress the program of sanitation and disease control in poultry production. Further the production of high quality eggs.

Furnish detailed information and encouragement to cucumber growers, if a market is available.

Cooperate closely with the Corrotoman Farmers Cooperative, Incorporated in its program of production, curing and marketing of sweet potatoes.

Make a detailed plan for the furtherance of a home garden project in the county.

Cooperate with the Resettlement Division in the selection and supervision of rehabilitation clients and in the establishment of community center activities in Corrotoman.

Conduct Corn-Hog and Wheat programs of the AAA in the County.

Further a sound program of general farming through sound rotation practices, use of lime and fertilizer, with special attention to livestock enterprises where adopted. Serve as a trouble shooter in livestock diseases to keep losses at a minimum.

Cooperate with agencies of the Farm Credit Administration in supplying the credit needs of farmers. Assist and cooperate with all governmental agencies dealing with agricultural problems of the county.

## COOPERATIVE EXTENSION WORK IN AGRICULTURE AND HOME ECONOMICS

U.S. Department of Agriculture  
and State Agricultural Colleges  
Cooperating

Extension Service  
Division of Cooperative Extension  
Washington, D.C.

# COMBINED ANNUAL REPORT OF COUNTY EXTENSION WORKERS

This report form is for use by county extension agents in making a combined statistical report on all extension work done in the county during the year. Agents resigning during the year should make out this report before quitting the service.

State Virginia County Lancaster

### REPORT OF

(Name) Home Demonstration Agent.

From \_\_\_\_\_ to \_\_\_\_\_, 193

4-H Club Agent.

From \_\_\_\_\_ to \_\_\_\_\_, 193

C. Carter Chase

Agricultural Agent.

From Dec. 1, 1934 to Nov. 30, 1935

**READ SUGGESTIONS, PAGES 2 AND 3**



Approved:

Date \_\_\_\_\_

9-2012

State Extension Director.

## SUGGESTIONS RELATIVE TO THE PREPARATION OF THE COUNTY EXTENSION AGENT'S ANNUAL REPORT

The annual report should be a summary, with analysis and interpretations, for presentation to the people of the county, the State, and the Nation of the extension activities in each county for the year, and the results obtained by the county extension agents assisted by the subject-matter specialists. The making of such a report is of great value to the county extension agents and the people of the county in showing the progress made during the year as a basis for future plans. It is of vital concern also to the State and Nation as a measure of rural progress and a basis for intelligent legislation and financial support of extension work.

At least four copies of the annual report should be made: One copy for the county officials, one copy for the agent's files, one copy for the State extension office, and one copy for the Extension Service, United States Department of Agriculture. *The report to the Washington office should be sent through the State extension office.*

### STATISTICAL SUMMARY

Where two or more agents are employed in a county they should submit a single statistical report showing the combined activities and accomplishments of all county extension agents employed in the county during the year. Results obtained through assistance rendered agents by specialists should also be included. This report shows, insofar as possible, the part each agent has taken in forwarding the extension program. The county totals should be the sum of the activities and accomplishments of individual agents *minus duplications due to two or more agents participating in the same activity or accomplishment.* The county totals, when properly recorded, show the progress made in the county during the year in forwarding the entire extension program. Negro men and women agents should prepare a combined statistical report separate from that of the white agents.

The statistical summary should be a report of this year's activities and results that can be verified by records on file in the county office. Where records are not available careful estimates are desired. Such estimates should be marked "Est."

### NARRATIVE SUMMARY

A separate narrative report is desired from the leader of each line of work, such as county agricultural agent, home demonstration agent, boys' and girls' club agent, and Negro agent. Where an assistant agent has been employed during a part or all of the year, the report of his or her work should be included with the report of the leader of that line of work. Where an agent in charge of a line of work has quit the service during the year, the information contained in his or her report should be incorporated in the annual report of the agent on duty at the close of the report year, and the latter report so marked.

The narrative report should summarize and interpret, under appropriate subheadings, the outstanding results accomplished and the extension methods used for each project. Every statement should be clear-cut, concise, forceful, and, where possible, reinforced with necessary data from the statistical summary. Use a descriptive style of writing, giving major accomplishments first under each project. Give extension methods fully relating to outstanding results only, and where practicable illustrate with photographs, maps, diagrams, blueprints, or copies of charts and other forms used. Full credit should be given to all cooperating agencies. The lines should be single-spaced, with double space between the paragraphs and reasonably good margins. The pages should be numbered in consecutive order.

The following outline is merely suggestive of how the narrative report may be clearly and systematically presented. Each agent should prepare an outline to fit the situation and the work to be reported.

#### SUGGESTIVE OUTLINE OF ANNUAL NARRATIVE REPORT

- I. Cover and title page.
- II. Table of contents.
- III. Summary of activities and accomplishments, preferably of one or two typewritten pages only, placed at the beginning of the narrative report.
- IV. Changes in county extension organization.
  - (1) Form.
  - (2) General policies.
  - (3) Procedure.
- V. County program of work.
  - (1) Factors considered and methods used in determining program of work.
  - (2) Project activities and results.
 

Under appropriate headings and subheadings present in some detail for each major project or line of work the goals set up, the methods used, the results achieved, and the significance of these results in terms of improved farms and homes and of better community life.
- VI. Outlook and recommendations, including suggestive program of work for next year.

## TERMINOLOGY

To insure reports which convey the intended meaning to others and to facilitate the compilation of satisfactory national statistics on extension, it is extremely important that terms be used in accordance with accepted definitions. The following definitions of extension terms have been approved by the United States Department of Agriculture and the Association of Land Grant Colleges and Universities. Agents should read these definitions before starting to write the annual report.

## DEFINITIONS OF EXTENSION TERMS

1. A program of work is a statement of the specific projects to be undertaken by the extension agents during a year or a period of years.
2. A plan of work is a definite outline of procedure for carrying out the different phases of the program of work. Such a plan provides specifically for the means to be used and the methods of using them. It also shows what, how much, when, and where the work is to be done.
3. A community is a more or less well-defined group of rural people with common interests and problems. Such a group may include those within a township, trade area, or similar limits. For the purpose of this report a community is one of the several units into which a county is divided for conducting organized extension work.
4. A project leader, local leader, or committeeman is a person who, because of special interest and fitness, is selected to serve as a leader in advancing some phase of the local extension program. A project leader may be either an organization or a subject-matter leader.
5. Demonstrations as contemplated in this report are of two kinds—method demonstrations and result demonstrations. A method demonstration is a demonstration given by an extension worker or other trained leader for the purpose of showing how to carry out a practice. Examples: Demonstrations of how to can fruits and vegetables, mix spray materials, and cull poultry. A result demonstration is a demonstration conducted by a farmer, home maker, boy, or girl under the direct supervision of the extension worker, to show locally the value of a recommended practice. Such a demonstration involves a substantial period of time and records of results and comparisons, and is designed to teach others in addition to the person conducting the demonstration. Examples: Demonstrating that the application of fertilizer to cotton will result in more profitable yields, that underweight of certain chickens can be corrected through proper diet, that the use of certified seed in growing potatoes is a good investment, or that a large farm business results in a more efficient use of labor. The adoption of a farm or home practice resulting from a demonstration, or other teaching activity employed by the extension worker as a means of teaching is not in itself a demonstration.
6. A result demonstrator is an adult, a boy, or a girl who conducts a result demonstration as defined above.
7. A cooperater is a farmer or home maker who agrees to adopt certain recommended practices upon the solicitation of an extension worker. The work is not directly supervised by the extension agent and records are not required, but reports on the success of the practices may be obtained.
8. A 4-H Club is an organized group of boys and/or girls with the objectives of demonstrating improved practices in agriculture or home economics, and of providing desirable training for the members.
9. 4-H Club members enrolled are those boys and girls who actually start the work outlined for the year.
10. 4-H Club members completing are those boys and girls who satisfactorily finish the work outlined for the year.
11. A demonstration meeting is a meeting held to give a method demonstration or to start, inspect, or further a result demonstration.
12. A leader-training meeting is a meeting at which project leaders, local leaders, or committeemen are trained to carry on extension activities in their respective communities.
13. An office call is a call in person by an individual or a group seeking agricultural or home-economics information, as a result of which some definite assistance or information is given. A telephone call differs from an office call in that the assistance or information is given or received by means of the telephone. Telephone calls may be either incoming or outgoing.
14. A farm or home visit is a call by the agent at a farm or home at which some definite information relating to extension work is given or obtained.
15. Days in office should include time spent by the county extension agent in the office, at annual and other extension conferences, and on any other work directly related to office administration.
16. Days in field should include all days spent on official duty other than "days in office."
17. Letters written should include all original letters on official business. (Duplicated letters should not be included.)
18. An extension school is a school usually of 2 to 6 days' duration, arranged by the Extension Service, where practical instruction is given to persons not resident at the college. An extension short course differs from an extension school in that it is usually held at the college or another educational institution and usually for a longer period of time.
19. Records consist of definite information on file in the county office that will enable the agent to verify the data on extension work included in this report.
20. The county extension association or committee is that county organization, whether a membership or a delegate body, which is recognized officially in the conduct of extension work in the county.

## GENERAL ACTIVITIES

Report Only This Year's Extension Activities and Events That Can Be Verified

1. List below the names, titles, and periods of service of the county extension agents whose work is included in this report. Include time of assistants with that of regular agent.

AGENT	Total months of service this year	Days devoted to A.A.A. work	Days devoted to related work	Total days in office	Total days in field
	(a)	(b)	(c)	(d)	(e)
(Name) Home demonstration agent.....	(1)				
Asst. home demonstration agent.....					
4-H Club agent.....	(2)				
Assistant 4-H Club agent.....					
<i>C. Carter Chase</i> Agricultural agent.....	(3)	12	90	10	58
<i>H. A. Turner</i> Assistant agricultural agent.....					
14 days assisted on club work					

2. County extension association or committee:

(a) Agricultural extension:

(1) Name

*Agricultural Advisory Board*

(2) Number of members

25

(b) Home demonstration:

(1) Name

(2) Number of members

2

(c) 4-H Club:

(1) Name

*Leicester Co. 4-H Club Council*

(2) Number of members

20

3. Number of communities in county where extension work should be conducted.

5

4. Number of above communities in which the extension program has been planned cooperatively by extension agents and local committees.

5

5. Number of different voluntary county or community project leaders or committeemen actively engaged in forwarding the extension program:

(a) Adult work { (1) Men 26 (2) Women

(b) 4-H Club work { (1) Men 1 (2) Women 4

(3) Older club boys 1 (4) Older club girls

6. Number of different paid local leaders engaged in A.A.A. program, or in relief work:

(a) Men 6 (b) Women

7. Number of clubs or other groups organized to carry on adult home demonstration work.

8. Number of members in such clubs or groups.

ITEM	Home demonstration agents (a)	4-H Club agents (b)	Agricultural agents (c)	County total (d)
9. Number of 4-H Clubs.....			4	4
10. Number of different 4-H Club members enrolled.....	(1) Boys		95	95
			(2) Girls	51
11. Number of different 4-H Club members completing.....	(1) Boys		48	48
			(2) Girls	31

12. Number of different members enrolled in 4-H Club work for:

MEMBERS	1st year	2d year	3d year	4th year	5th year	6th year and over
(a) Boys.....	68	15	4	4	2	2
(b) Girls.....	48	2	1			

\* County total should equal sum of preceding three columns minus duplications due to two or more agents participating in the same activity or assignment.

\* Report the total number of different boys or girls enrolled in club work. This total should equal the sum of the project enrollments reported on page 7 to 26, minus duplications due to the same boy or girl carrying on two or more subject-matter lines of work.

\* Same as footnote 2 but refers to completions instead of enrollments.

\* The total for this question should agree with county total, question 10.

## GENERAL ACTIVITIES—Continued

Report Only This Year's Extension Activities and Results That Can Be Verified

ITEM	Age	10 and under	11	12	13	14	15	16	17	18	19	20 and over
13. Number of different 4-H Club members enrolled according to age <sup>1</sup>	(a) Boys	7	10	17	7	13	13	13	5	3	3	4
	(b) Girls	6	6	9	13	6	3	2	5	1		

14. Number of 4-H Club members:<sup>1</sup> (a) In school 144 (b) Out of school 2 14

ITEM	Home demonstration agents (a)	4-H Club agents (b)	Agricultural agents (c)	County total <sup>2</sup> (a)
15. Number of 4-H Club teams trained: (1) Judging				
(2) Demonstration				
16. Number of groups other than 4-H Clubs organized for extension work with rural young people 16 years of age and older				
17. Members in groups reported in question 16: (1) Young men				
(2) Young women				
18. Total number of farm or home visits <sup>3</sup> made in conducting extension work			804	804
19. Number of different farms or homes visited			323	323
20. Number of calls relating to extension work: (1) Office			1386	1386
(2) Telephone			830	830
21. Number of news articles or stories published <sup>4</sup>			23	23
22. Number of individual letters written			875	875
23. Number of different circular letters prepared (not total copies mailed)			54	54
24. Number of bulletins distributed			211	211
25. Number of radio talks made				
26. Number of events at which extension exhibits were shown				
27. Training meetings held for local leaders or committeemen:	(1) Adult work	(a) Number	1	1
		(b) Men leaders	23	23
		(c) Women leaders		
(2) 4-H Club	(a) Number	3	3	
	(b) Leaders	37	37	
28. Method demonstration meetings held (include all method demonstrations in both adult and 4-H Club work given by agents and specialists not reported under question 27)	(1) Number		40	40
	(2) Total attendance		1135	1135
29. Meetings held at result demonstrations:	(1) Number		6	6
	(2) Total attendance		170	170

<sup>1</sup>The total for this question should agree with county total, question 14.

<sup>2</sup>County total should equal sum of preceding three columns minus duplications due to two or more agents participating in the same activity or accomplishment.

<sup>3</sup>Do not count a single visit to both the farm and home as two visits.

<sup>4</sup>Do not count items relating to notices of meetings only.

NOTE.—Questions 15-24 refer to the total number of different activities conducted this year. The totals should equal the sums of the corresponding information reported on following pages minus duplications where the same activity relates to two or more lines of work.

## GENERAL ACTIVITIES—Continued

Report Only This Year's Extension Activities and Results That Can Be Verified

ITEM		Home demonstration agents (a)	4-H Club agents (b)	Agricultural agents (c)	County total (d)	
30. Tours conducted	(1) Adult work	(a) Number		1	1	
		(b) Total attendance		53	53	
	(2) 4-H Club	(a) Number		1	1	
		(b) Total attendance		42	42	
31. Achievement days held	(1) Adult work	(a) Number				
		(b) Total attendance				
	(2) 4-H Club	(a) Number				
		(b) Total attendance				
32. Encampments held (Do not include picnics, rallies, or short courses, as these should be reported under other meetings.)	(1) Farm women	(a) Number				
		(b) Total members attending				
		(c) Total others attending				
	(2) 4-H club	(a) Number			1	1
		(b) Total boys attending			6	6
		(c) Total girls attending			9	9
	(d) Total others attending			2	2	
33. Other meetings of an extension nature participated in by agents or specialists and not previously reported	(1) Number			7	7	
	(2) Total attendance			86	86	
34. Meetings held by local leaders or committeemen not participated in by agents or specialists and not reported elsewhere	(1) Adult work	(a) Number		3	3	
		(b) Total attendance		12	12	
	(2) 4-H club	(a) Number			17	17
		(b) Total attendance			397	397

## SUMMARY OF EXTENSION INFLUENCE FOR YEAR

It is highly desirable for extension workers to consider the proportion of farms and farm homes in the county which have been definitely influenced to make some substantial change in farm or home operations as a result of the extension program for men, women, boys, and girls. It is recognized that this information is very difficult for agents to report accurately, so a conservative estimate based upon such records, surveys, and other sources of information as are available will be satisfactory. Such estimates should be marked "Est."

Include results of emergency activities as well as the regular extension program.

35. Number of farms in county	993	35
36. Number of farms on which changes in practices have definitely resulted from the agricultural extension program	70	36
37. Number of farm homes in which changes in practices have definitely resulted from the home demonstration program		37
38. Number of other homes in which changes in practices have definitely resulted from the home demonstration program		38
39. Number of farm homes with 4-H Club members enrolled	82	39
40. Number of other homes with 4-H Club members enrolled	25	40
41. Total number of different farm families influenced by some phase of the extension program (Include questions 35, 37, and 39, minus duplications.)	222	41
42. Total number of different other families influenced by some phase of extension program (Include questions 38 and 40, minus duplications.)	57	42

1 County total should equal sum of preceding three columns minus duplications due to two or more agents participating in the same activity or accomplishment.

NOTE.—Questions 35-42 refer to the total number of different activities conducted this year. The totals should equal the sums of the corresponding information reported on following pages minus duplications where the same activity relates to two or more lines of work.

CEREALS<sup>1</sup>

Report Only This Year's Extension Activities and Results That Can Be Verified

ITEM	Corn (a)	Wheat (b)	Oats (c)	Rye (d)	Buckwheat (e)	All other cereals <sup>2</sup> (f)	
43. Days devoted to line of work by:							
(1) Home demonstration agents							} 43
(2) 4-H Club agents							
(3) Agricultural agents	35	22					
(4) Specialists	2						
44. Number of communities in which work was conducted	5	4					44
45. Number of voluntary local leaders or committeemen assisting	5	2					45
46. Days of assistance rendered by voluntary leaders or committeemen	8½	3					46
47. Number of adult result demonstrations conducted		1					47
48. Number of meetings at result demonstrations							48
49. Number of method-demonstration meetings held	2	3					49
50. Number of other meetings held	1	1					50
51. Number of news stories published	3	5					51
52. Number of different circular letters issued	5	8*					52
53. Number of farm or home visits made	60	35					53
54. Number of office calls received	166	142	8	4			54
55. Number of 4-H Club members enrolled	5			1			} 55
(1) Boys							
(2) Girls							
56. Number of 4-H Club members completing	3			1			} 56
(1) Boys							
(2) Girls							
57. Number of acres in projects conducted by 4-H Club members completing	4.8			2			57
58. Total yields of crops grown by 4-H Club members completing	228 bu.	bu.	bu.	30 bu.	bu.	bu.	58
59. Number of farmers following fertilizer recommendations	10						59
60. Number of farmers following insect-control recommendations		3					60
61. Number of farmers following disease-control recommendations		10					61
62. Number of farmers following marketing recommendations							62
63. Number of farmers assisted in using timely economic information as a basis for readjusting enterprise							63
64. Number of farms for which production-reduction contracts were signed	40	20					64
65. Total acres taken out of production on such farms in accordance with contracts reported in question 64	226	34					65
66. Number of farmers following other specific practice recommendations: <sup>3</sup>							} 66
(1)							
(2)							
(3)							
(4)							
(5)							

<sup>1</sup> Report fall-corn crops the year they are harvested.<sup>2</sup> Estimate crop by name.<sup>3</sup> Include all corn and soy contracts. This total should agree with 242(6).<sup>4</sup> For the sake of uniformity it is suggested that each State prepare a list of the more important practices to be reported upon by all agents in that State.

## LEGUMES AND FORAGE CROPS

Report Only This Year's Extension Activities and Results That Can Be Verified

ITEM	Alfalfa	Sweet-clover	Clover (red, crimson, white)	Vetch	Lespedeza	Peas	Pasture
	(a)	(b)	(c)	(d)	(e)	(f)	
67. Days devoted to line of work by:							
(1) Home demonstration agents							} 67
(2) 4-H Club agents							
(3) Agricultural agents					2		
(4) Specialists							
68. Number of communities in which work was conducted					5		68
69. Number of voluntary local leaders or committeemen assisting							69
70. Days of assistance rendered by voluntary leaders or committeemen							70
71. Number of adult result demonstrations conducted					5		71
72. Number of meetings at result demonstrations							72
73. Number of method-demonstration meetings held							73
74. Number of other meetings held							74
75. Number of news stories published							75
76. Number of different circular letters issued							76
77. Number of farm or home visits made					15		77
78. Number of office calls received			3		19		78
79. Number of 4-H Club members enrolled							} 79
(1) Boys							
(2) Girls							
80. Number of 4-H Club members completing							} 80
(1) Boys							
(2) Girls							
81. Number of acres in projects conducted by 4-H Club members completing							81
82. Total yields of crops grown by 4-H Club members completing							} 82
(1) Seed	bu.	bu.	bu.	bu.	bu.	xxxx	
(2) Forage	tons	tons	tons	tons	tons	xxxx	
83. Number of farmers following fertilizer recommendations							83
84. Number of farmers following insect-control recommendations							84
85. Number of farmers following disease-control recommendations							85
86. Number of farmers following marketing recommendations							86
87. Number of farmers assisted in using timely economic information as a basis for readjusting enterprise							87
88. Number of farms for which production-reduction contracts were signed							88
89. Total acres taken out of production on such farms in accordance with contracts reported in question 88							89
90. Number of farmers following other specific practice recommendations: <sup>1</sup>							} 90
(1)							
(2)							
(3)							
(4)							
(5)							

<sup>1</sup> For the sake of uniformity it is suggested that each State prepare a list of the more important practices to be reported upon by all agents in that State.

## LEGUMES AND FORAGE CROPS—CONTINUED

Report Only This Year's Extension Activities and Results That Can Be Verified

ITEM	Soybeans	Cowpeas and field peas	Velvet- beans	Field beans	Peas	All other legumes and forage crops <sup>1</sup>	
	(a)	(b)	(c)	(d)	(e)	(f)	
67. Days devoted to line of work by:							
(1) Home demonstration agents							} 67
(2) 4-H Club agents							
(3) Agricultural agents							
(4) Specialists							
68. Number of communities in which work was conducted							68
69. Number of voluntary local leaders or committeemen assisting							69
70. Days of assistance rendered by voluntary leaders or committeemen							70
71. Number of adult result demonstrations conducted							71
72. Number of meetings at result demonstrations							72
73. Number of method-demonstration meetings held							73
74. Number of other meetings held							74
75. Number of news stories published							75
76. Number of different circular letters issued							76
77. Number of farm or home visits made							77
78. Number of office calls received	13						78
79. Number of 4-H Club members enrolled							} 79
(1) Boys							
(2) Girls							
80. Number of 4-H Club members completing							} 80
(1) Boys							
(2) Girls							
81. Number of acres in projects conducted by 4-H Club members completing							81
82. Total yields of crops grown by 4-H Club members completing							} 82
(1) Seed	bu.	bu.	bu.	bu.	lb.	bu.	
(2) Forage	tons	tons	tons	tons	tons	tons	
83. Number of farmers following fertilizer recommendations							83
84. Number of farmers following insect-control recommendations							84
85. Number of farmers following disease-control recommendations							85
86. Number of farmers following marketing recommendations							86
87. Number of farmers assisted in using timely economic information as a basis for readjusting enterprise							87
88. Number of farms for which production-reduction contracts were signed							88
89. Total acres taken out of production on such farms in accordance with contracts reported in question 88							89
90. Number of farmers following other specific practice recommendations: <sup>2</sup>							} 90
(1)							
(2)							
(3)							
(4)							
(5)							

<sup>1</sup> Indicate crop by name.<sup>2</sup> For the sake of uniformity it is suggested that each State prepare a list of the more important practices to be reported upon by all agents in that State.

## POTATOES, COTTON, TOBACCO, AND OTHER SPECIAL CROPS

Report Only This Year's Extension Activities and Results That Can Be Verified

ITEM	Irish pota-	Sweetpota-	Cotton	Cucumber	All other	
	toes (a)	toes (b)	(c)	Tobacco (d)	special crops (e)	
91. Days devoted to line of work by:						
(1) Home demonstration agents.....						} 91
(2) 4-H Club agents.....						
(3) Agricultural agents.....		12		5	25	
(4) Specialists.....		6		1	22	
92. Number of communities in which work was conducted.....		3		5	5	92
93. Number of voluntary local leaders or committeemen assisting.....						93
94. Days of assistance rendered by voluntary leaders or committeemen.....						94
95. Number of adult result demonstrations conducted.....		20				95
96. Number of meetings at result demonstrations.....		1			1	96
97. Number of method-demonstration meetings held.....		4		1	1	97
98. Number of other meetings held.....		1				98
99. Number of news stories published.....		2		1	3	99
100. Number of different circular letters issued.....		4		3	2	100
101. Number of farm or home visits made.....		45		15	98	101
102. Number of office calls received.....	9	42		29	59	102
103. Number of 4-H Club members enrolled.....		1		3	25	} 103
(1) Boys.....					2	
(2) Girls.....						
104. Number of 4-H Club members completing.....		1		3	15	} 104
(1) Boys.....					1	
(2) Girls.....						
105. Number of acres in projects conducted by 4-H Club members completing.....		.25		1.4	16	105
106. Total yields of crops grown by 4-H Club members completing.....	bu.	20 bu.	lb. <sup>2</sup>	32 <sup>1</sup>	2452	106
107. Number of farmers following fertilizer recommendations.....		15		20	125	107
108. Number of farmers following insect-control recommendations.....				15	50	108
109. Number of farmers following disease-control recommendations.....		15		10	50	109
110. Number of farmers following marketing recommendations.....		15			10	110
111. Number of farmers assisted in using timely economic information as a basis for readjusting enterprises.....						111
112. Number of farms for which production-reduction contracts were signed.....						112
113. Total acres taken out of production on such farms in accordance with contracts reported in question 112.....						113
114. Number of farmers following other specific practice recommendations: <sup>3</sup>						} 114
(1).....						
(2).....						
(3).....						
(4).....						
(5).....						

<sup>1</sup> Indicate crop by name.

<sup>2</sup> Report yield of cotton in pounds of seed cotton.

<sup>3</sup> For the sake of uniformity it is suggested that each State prepare a list of the more important practices to be reported upon by all agents in that State.

## FRUITS, VEGETABLES, AND BEAUTIFICATION OF HOME GROUNDS

Report Only This Year's Extension Activities and Results That Can Be Verified

ITEM	Home gardens	Market gardening, truck, and eating crops	Fertilization of home grounds	Tree fruits	Bush and small fruits	Grapes	
	(a)	(b)	(c)	(d)	(e)	(f)	
115. Days devoted to line of work by:							
(1) Home demonstration agents.....							115
(2) 4-H Club agents.....							
(3) Agricultural agents.....	3			2	3		
(4) Specialists.....					2		
116. Number of communities in which work was conducted.....	5			1	1		116
117. Number of voluntary local leaders or committeemen assisting.....							117
118. Days of assistance rendered by voluntary leaders or committeemen.....				2	4		118
119. Number of adult result demonstrations conducted.....							119
120. Number of meetings at result demonstrations.....	1						120
121. Number of method-demonstration meetings held.....	3						121
122. Number of other meetings held.....							122
123. Number of news stories published.....							123
124. Number of different circular letters issued.....	1						124
125. Number of farm or home visits made.....	5			8	10		125
126. Number of office calls received.....	99			6	3	4	126
127. Number of 4-H Club members enrolled.....							127
(1) Boys.....	24						
(2) Girls.....	9		14				
128. Number of 4-H Club members completing.....							128
(1) Boys.....	7						
(2) Girls.....	3		12				
129. Number of acres in projects conducted by 4-H Club members completing.....			xxxx				129
130. Total yields of crops grown by 4-H club members completing.....	bu.	bu.	xxxx	bu.	bu.	bu.	130
131. Number of farms or homes where fertilizer recommendations were followed.....				2	3		131
132. Number of farms or homes where insect-control recommendations were followed.....	25						132
133. Number of farms or homes where disease-control recommendations were followed.....							133
134. Number of farms or homes where marketing recommendations were followed.....							134
135. Number of farms or homes where assistance was given in using timely economic information as a basis for readjusting enterprise.....							135
136. Number of homes where recommendations were followed as to establishment or care of lawn.....	xxxx	xxxx		xxxx	xxxx	xxxx	136
137. Number of homes where recommendations were followed regarding planting of shrubbery and trees.....	xxxx	xxxx		xxxx	xxxx	xxxx	137
138. Number of homes where recommendations were followed as to treatment of walks, drives, or fences.....	xxxx	xxxx		xxxx	xxxx	xxxx	138
139. Number of homes where recommendations were followed as to improving appearance of exterior of house and outbuildings.....	xxxx	xxxx		xxxx	xxxx	xxxx	139
140. Number of homes where other specific practice recommendations were followed: <sup>1</sup>							140
(1).....							
(2).....							
(3).....							
(4).....							

<sup>1</sup> For the sake of uniformity it is suggested that each State prepare a list of the more important practices to be reported upon by all agents in that State.



## FORESTRY—Continued

Report Only This Year's Extension Activities and Results That Can Be Verified

166. Number of farmers assisted in timber estimating and appraisal.....	166
167. Number of farmers following wood-preservation recommendations.....	167
168. Number of farmers following recommendations in the marketing of forest products.....	168
169. Number of farmers following other specific practice recommendations: <sup>1</sup>	
(a).....	} 169
(b).....	
(c).....	
(d).....	

## AGRICULTURAL ENGINEERING—Continued

Engineering activities	Number of farms (a)	Number of units (b)	Total value of service or savings (c)	
170. Terracing and erosion control.....		acres	\$	170
171. Drainage practices.....		acres		171
172. Irrigation practices.....		acres		172
173. Land-clearing practices.....		acres		173
174. Better types of machines.....		machines		174
175. Maintenance and repair of machines.....		machines		175
176. Efficient use of machinery.....		X X X X X X X X		176
177. All buildings constructed (include silos).....		5 buildings		177
178. Buildings remodeled, repaired, painted.....		buildings		178
179. Farm electrification.....	105	Summary for R. E. A.		179
180. Home equipment (include sewing machines).....				180
181. Total of columns (a) and (c).....	farms	X X X X X X X X	\$	181

182. Number of machines repaired as reported in question 175, by type:

(a) Tractors.....	(e) Mowers.....	} 182
(b) Tillage implements.....	(f) Planters.....	
(c) Harvesters and threshers.....	(g) Other.....	
(d) Plows.....		

183. Number of buildings and equipment improved as reported in questions 177, 178, 179, 180, by type:

(a) Dwellings constructed according to plans furnished.....		} 183
(b) Dwellings remodeled according to plans furnished.....		
(c) Sewage systems installed.....	(i) Silos.....	
(d) Water systems installed.....	(j) Hog houses.....	
(e) Heating systems installed.....	(k) Poultry houses..... 5	
(f) Lighting systems installed.....	(l) Storage structures..... 1	
(g) Home appliances and machines.....	(m) Other.....	
(h) Dairy buildings.....		

<sup>1</sup> For the sake of uniformity it is suggested that each State prepare a list of the more important practices to be reported upon by all agents in that State.

## POULTRY AND BEES

Report Only This Year's Extension Activities and Results That Can Be Verified

ITEM	Poultry (a)	Bees (b)	
184. Days devoted to line of work by:			
(1) Home demonstration agents.....			} 184
(2) 4-H Club agents.....			
(3) Agricultural agents.....	20		
(4) Specialists.....	10		
185. Number of communities in which work was conducted.....	5		185
186. Number of voluntary local leaders or committeemen assisting.....			186
187. Days of assistance rendered by voluntary leaders or committeemen.....			187
188. Number of adult result demonstrations conducted.....			188
189. Number of meetings at result demonstrations.....			189
190. Number of method-demonstration meetings held.....	8		190
191. Number of other meetings held.....			191
192. Number of news stories published.....	5		192
193. Number of different circular letters issued.....	5		193
194. Number of farm or home visits made.....	122		194
195. Number of office calls received.....	59	4	195
196. Number of 4-H Club members enrolled.....	(1) Boys 23		} 196
	(2) Girls 13		
197. Number of 4-H Club members completing.....	(1) Boys 9		} 197
	(2) Girls 10		
198. Number of units in projects conducted by 4-H Club members completing.....	1626 chickens	colonies	198

## POULTRY—Continued

199. Number of families following an organized improved breeding plan as recommended.....	3	199
200. Number of families following recommendations in purchasing baby chicks.....	25	200
201. Number of families following recommendations in chick rearing.....	50	201
202. Number of families following production-feeding recommendations.....	150	202
203. Number of families following sanitation recommendations in disease and parasite control.....	30	203
204. Number of families improving poultry-house equipment according to recommendations.....	5	204
205. Number of families following marketing recommendations.....		205
206. Number of families assisted in using timely economic information as a basis for readjusting enterprise.....		206
207. Number of families following other specific practice recommendations: <sup>1</sup>		
(a).....		} 207
(b).....		

## BEES—CONTINUED

208. Number of farmers following recommendations in transferring colonies to modern hives.....		208
209. Number of colonies involved in question 208.....		209
210. Number of farmers following disease-control recommendations.....		210
211. Number of farmers following requeening recommendations.....		211
212. Number of farmers following marketing recommendations.....		212
213. Number of farmers following other specific practice recommendations: <sup>1</sup>		
(a).....		} 213
(b).....		

<sup>1</sup> For the sake of uniformity it is suggested that each State prepare a list of the more important practices to be reported upon by all agents in that State.

## DAIRY CATTLE, BEEF CATTLE, SHEEP, SWINE, AND HORSES

Report Only This Year's Extension Activities and Results That Can Be Verified

ITEM	Dairy cattle	Beef cattle	Sheep	Swine	Horses and mules	Other livestock	
	(a)	(b)	(c)	(d)	(e)	(f)	
214. Days devoted to line of work by:							
(1) Home demonstration agents.....							214
(2) 4-H Club agents.....							
(3) Agricultural agents.....	5			53	5		
(4) Specialists.....				1			
215. Number of communities in which work was conducted.....	5			5	5		215
216. Number of voluntary local leaders or committeemen assisting.....				7			216
217. Days of assistance rendered by voluntary leaders or committeemen.....							217
218. Number of adult result demonstrations conducted.....				5	8		218
219. Number of meetings at result demonstrations.....							219
220. Number of method-demonstration meetings held.....				2			220
221. Number of other meetings held.....							221
222. Number of news stories published.....							222
223. Number of different circular letters issued.....				6	1		223
224. Number of farm or home visits made.....	38			139	42		224
225. Number of office calls received.....	39			168	71		225
226. Number of 4-H Club members enrolled.....				7			226
(1) Boys.....	7						
(2) Girls.....	5						
227. Number of 4-H Club members completing.....				3			227
(1) Boys.....	5						
(2) Girls.....	1						
228. Number of animals in projects conducted by 4-H Club members completing.....	10			25			228
229. Number of farmers assisted in obtaining purebred sires.....	2		1				229
230. Number of farmers assisted in obtaining high-grade or purebred females.....							230
231. Number of bull, boar, ram, or stallion circles or clubs organized or assisted.....							231
232. Number of members in preceding circles or clubs.....							232
233. Number of herd or flock-improvement associations organized or assisted.....							233
234. Number of members in these associations.....							234
235. Number of farmers not in associations keeping performance records of animals.....							235
236. Number of families assisted in home butchering, meat cutting, and curing.....							236
237. Number of families assisted in butter and cheese making.....							237
238. Number of farmers following parasite-control recommendations.....			6		8		238
239. Number of farmers following disease-control recommendations.....				139			239
240. Number of farmers following marketing recommendations.....							240
241. Number of farmers assisted in using timely economic information as a basis for readjusting enterprise.....							241
242. Number of farms for which production-reduction contracts were signed.....				40			242
243. Total reduction in number of animals on such farms in accordance with contracts reported in question 242.....				61			243

\* Include rabbits, goats, game and fur animals.

\* Include all oren and hog contracts. This total should agree with 64(c).

## AGRICULTURAL ECONOMICS

Report Only This Year's Extension Activities and Results That Can Be Verified

ITEM	Public problems and economic planning on county or community basis <sup>1</sup>	FARM MANAGEMENT			Outlook	Marketing, buying, and financing	
		Farm records (inventories, accounts, etc.)	Individual farm planning	Farm and home financing (short and long time)			
	(a)	(b)	(c)	(d)	(e)	(f)	
244. Days devoted to line of work by:							
(1) Home demonstration agents							} 244
(2) 4-H Club agents							
(3) Agricultural agents		5	2	15	2	5	
(4) Specialists							
245. Number of communities in which work was conducted		5		5		1	245
246. Number of voluntary local leaders or committeemen assisting							246
247. Days of assistance rendered by voluntary leaders or committeemen							247
248. Number of adult result demonstrations conducted		60	2	90		1	248
249. Number of meetings at result demonstrations							249
250. Number of method-demonstration meetings held							250
251. Number of other meetings held							251
252. Number of news stories published							252
253. Number of different circular letters issued							253
254. Number of farm or home visits made		65		37	9	12	254
255. Number of office calls received		25		159	40	36	255
256. Number of 4-H Club members enrolled	(1) Boys	XXXX	1	XXXX	XXXX	XXXX	} 256
	(2) Girls	XXXX		XXXX	XXXX	XXXX	
257. Number of 4-H Club members completing	(1) Boys	XXXX		XXXX	XXXX	XXXX	} 257
	(2) Girls	XXXX		XXXX	XXXX	XXXX	
258. Number of farmers keeping farm accounts throughout the year under supervision of agent					(a) Regular (b) AAA 53		258
259. Number of farmers keeping cost-of-production records under supervision of agent					60		259
260. Number of farmers assisted in summarizing and interpreting their accounts							260
261. Number of farmers assisted in making inventory or credit statements							261
262. Number of farmers assisted in obtaining credit					90		262
263. Number of farmers assisted in making mortgage or other debt adjustments							263
264. Number of farm credit associations assisted in organizing during the year							264
265. Number of farm business or enterprise-survey records taken during year							265
266. Number of farmers making recommended changes in their business as result of keeping accounts or survey records							266
267. Number of other farmers adopting cropping, livestock, or complete farming systems according to recommendations						2	267
268. Number of farmers advised relative to leases							268
269. Number of farmers assisted in developing supplemental sources of income							269
270. Number of families assisted in reducing cash expenditure:							} 270
(a) By exchange of labor or machinery							
(b) By bartering farm or home products for other commodities or services							
(c) By producing larger part of food on farm							
(d) By making own repairs of buildings and machinery							
271. Number of urban families moving to farms who have been assisted in getting established						1	271
272. Number of farm families on relief assisted to become self-supporting						15	272

<sup>1</sup> Include taxation, land utilization, rural rehabilitation, economic basis of extension program, drought and flood relief. Insofar as possible, production adjustment activities should be reported under the crop or livestock concerned.

## AGRICULTURAL ECONOMICS—Continued

Report Only This Year's Extension Activities and Results That Can Be Verified

273. Number of marketing associations or groups <sup>1</sup> assisted in organizing during the year	1	273
274. Number of marketing associations or groups <sup>1</sup> previously organized assisted by extension agents this year		274
275. Membership in associations and groups organized or assisted (273 and 274)	20	275
276. Number of individuals (not in associations) assisted with marketing problems		276
277. Number of families following other specific practice recommendations		277

ITEM	Standardizing, packaging, or grading	Processing or manufacturing	Locating markets and transportation	Use of current market information	Financing	Organization	Accounting	Keeping membership informed	
	(a)	(b)	(c)	(d)	(e)	(f)	(g)	(h)	
278. Number of organizations assisted with problems of	1	1			1	1	1	1	278
279. Number of individuals (not in organizations) assisted with problems of	15				XXXX	XXXX	XXXX	XXXX	279

ITEM	Hay and grain	Cotton	Tobacco	Dairy products	Livestock	Wool	
	(a)	(b)	(c)	(d)	(e)	(f)	
280. Value of products sold by all associations or groups organized or assisted	\$	\$	\$	\$	\$	\$	280
281. Value of products sold by individuals (not in organizations) assisted	\$	\$	\$	\$	\$	\$	281

ITEM	Fruits and vegetables	Poultry and eggs	Home products				
			Food	Handicraft			
			(f)	(g)			
280. Value of products sold by all associations or groups organized or assisted	\$	\$	\$	\$	\$	\$	280
281. Value of products sold by individuals (not in organizations) assisted	\$	\$	\$	\$	\$	\$	281

ITEM	Livestock	Feed for livestock	Farm equipment	Oil and gas	Fertilizer, seed, and other farm supplies	Home equipment	Home supplies	
	(a)	(b)	(c)	(d)	(e)	(f)	(g)	
282. Value of supplies purchased by all associations or groups organized or assisted	\$	\$	\$	\$	\$	\$	\$	282
283. Value of supplies purchased by individuals (not in organizations) assisted	\$	\$	\$	\$	\$	\$	\$	283

<sup>1</sup> Include independent local associations, units of federations, branches of centralized organizations, terminal sales agencies, production associations which do buying or selling, and curb and home demonstration club markets.

## FOODS AND NUTRITION

Report Only This Year's Extension Activities and Results That Can Be Verified

ITEM	Food selection and preparation	Food preserva- tion	
	(a)	(b)	
284. Days devoted to line of work by:			
(1) Home demonstration agents.....			} 284
(2) 4-H Club agents.....			
(3) Agricultural agents.....			
(4) Specialists.....			
285. Number of communities in which work was conducted.....			285
286. Number of voluntary local leaders or committeemen assisting.....			286
287. Days of assistance rendered by voluntary leaders or committeemen.....			287
288. Number of adult result demonstrations conducted.....			288
289. Number of meetings at result demonstrations.....			289
290. Number of method-demonstration meetings held.....	(1) By agents or specialists		} 290
	(2) By leaders		
291. Number of other meetings held.....	(1) By agents or specialists		} 291
	(2) By leaders		
292. Number of news stories published.....			292
293. Number of different circular letters issued.....			293
294. Number of farm or home visits made.....			294
295. Number of office calls received.....			295
296. Number of 4-H Club members enrolled.....	(1) Boys		} 296
	(2) Girls		
297. Number of 4-H Club members completing.....	(1) Boys		} 297
	(2) Girls		
298. Number of units in projects conducted by 4-H Club members completing:			
(a) Dishes of food products prepared.....	(b) Meals planned and served.....		} 298
(c) Quarts canned.....	(d) Other containers of jelly, jam, and other products.....		
(e) Pounds of vegetables and fruits stored or dried.....			
299. Number of families budgeting food expenditure for a year.....			299
300. Number of families following food-buying recommendations.....			300
301. Number of families serving better-balanced meals.....			301
302. Number of families improving home-packed lunches according to recommendations.....			302
303. Number of schools following recommendations for a hot dish or school lunch.....			303
304. Number of children involved in question 303.....			304
305. Number of families following recommended methods of child feeding.....			305
306. Number of individuals adopting recommendations for corrective feeding (such as weight control, anemia, pellagra, and constipation).....			306
307. Number of families producing and preserving home food supply according to annual food-supply budget.....			307
308. Number of families assisted in the canning or otherwise preserving of fruits, vegetables, and meats.....			308
309. Number of quarts canned by families reported under question 308. (Do not include 4-H Club members).....			309
310. Number of other containers of jam, jelly, or other products made by families reported under question 308. (Do not include 4-H Club members).....			310
311. Total estimated value of all products canned or otherwise preserved (questions 298, 309, 310) \$.....			311
312. Number of families following recommendations for the storage of home food supply.....			312
313. Number of families assisted in using timely economic information as a basis for readjusting family food supply.....			313

## CHILD DEVELOPMENT AND PARENT EDUCATION

Report Only This Year's Extension Activities and Results That Can Be Verified

314. Days devoted to line of work by:		
(a) Home demonstration agents.....	.....	} 314
(b) 4-H Club agents.....	.....	
(c) Agricultural agents.....	.....	
(d) Specialists.....	.....	
315. Number of communities in which work was conducted.....		315
316. Number of voluntary local leaders or committeemen assisting.....		316
317. Days of assistance rendered by voluntary leaders or committeemen.....		317
318. Number of adult result demonstrations conducted.....		318
319. Number of meetings at result demonstrations.....		319
320. Number of method-demonstration meetings held.....	{ (a) By agents or specialists..... (b) By leaders.....	} 320
321. Number of other meetings held.....	{ (a) By agents or specialists..... (b) By leaders.....	} 321
322. Number of news stories published.....		322
323. Number of different circular letters issued.....		323
324. Number of farm or home visits made.....		324
325. Number of office calls received.....		325
326. Number of 4-H Club members enrolled.....	{ (a) Boys..... (b) Girls.....	} 326
327. Number of 4-H Club members completing.....	{ (a) Boys..... (b) Girls.....	} 327
328. Number of 4-H Club members not in special child-development projects who participated in definite child-development work.....		328
329. Number of families improving habits of children.....		329
330. Number of families substituting positive methods of discipline for negative ones.....		330
331. Number of families providing recommended play equipment.....		331
332. Number of families following recommendations regarding furnishings adapted to children's needs.....		332
333. Number of different individuals participating in child-development and parent-education program.....	{ (a) Men..... (b) Women.....	} 333
334. Number of children involved in question 333.....		334
335. Number of families following other specific practice recommendations: <sup>1</sup>		
(a).....	.....	} 335
(b).....	.....	
(c).....	.....	
(d).....	.....	
(e).....	.....	

<sup>1</sup> For the sake of uniformity it is suggested that each State prepare a list of the more important practices to be reported upon by all agents in that State.

## CLOTHING

Report Only This Year's Extension Activities and Results That Can Be Verified

336. Days devoted to line of work by:			
(a) Home demonstration agents.....			
(b) 4-H Club agents.....			
(c) Agricultural agents.....			
(d) Specialists.....			
337. Number of communities in which work was conducted.....			337
338. Number of voluntary local leaders or committeemen assisting.....			338
339. Days of assistance rendered by voluntary leaders or committeemen.....			339
340. Number of adult result demonstrations conducted.....			340
341. Number of meetings at result demonstrations.....			341
342. Number of method-demonstration meetings held.....	{ (a) By agents or specialists (b) By leaders.....		342
343. Number of other meetings held.....	{ (a) By agents or specialists (b) By leaders.....		343
344. Number of news stories published.....			344
345. Number of different circular letters issued.....			345
346. Number of farm or home visits made.....			346
347. Number of office calls received.....			347
348. Number of 4-H Club members enrolled.....	{ (a) Boys (b) Girls.....		348
349. Number of 4-H Club members completing.....	{ (a) Boys (b) Girls.....		349
350. Number of articles made by 4-H Club members completing.....	{ (a) Dresses (b) Other.....		350
ITEM			
351. Number of individuals following recommendations in construction of clothing.....	Adults	Junior	351
352. Number of individuals following recommendations in the selection of clothing.....	(a)	(b)	352
353. Number of individuals keeping clothing accounts.....			353
354. Number of individuals budgeting clothing expenditures.....		X X X X X	354
355. Number of families following clothing-buying recommendations.....		X X X X X	355
356. Number of individuals improving children's clothing according to recommendations.....			356
357. Number of individuals following recommendations in improving care, renovation, and remodeling of clothing.....		X X X X X	357
358. Number of families assisted in using timely economic information in determining how best to meet clothing requirements.....		X X X X X	358
359. Total estimated savings due to clothing program.....	\$	\$	359
360. Number of individuals following other specific practices recommendations: 1			
(a).....			360
(b).....			

1 For the sake of uniformity it is suggested that each State prepare a list of the more important practices to be reported upon by all agents in that State.

## HOME MANAGEMENT AND HOUSE FURNISHINGS

Report Only This Year's Extension Activities and Results That Can Be Verified

ITEM	Home management	House furnishings	Handicraft	
	(a)	(b)	(c)	
361. Days devoted to line of work by:				
(1) Home demonstration agents.....				} 361
(2) 4-H Club agents.....				
(3) Agricultural agents.....				
(4) Specialists.....				
362. Number of communities in which work was conducted.....				362
363. Number of voluntary local leaders or committeemen assisting.....				363
364. Days of assistance rendered by voluntary leaders or committeemen.....				364
365. Number of adult result demonstrations conducted.....				365
366. Number of meetings at result demonstrations.....				366
367. Number of method-demonstration meetings held.....	(1) By agents or specialists.....			} 367
	(2) By leaders.....			
368. Number of other meetings held.....	(1) By agents or specialists.....			} 368
	(2) By leaders.....			
369. Number of news stories published.....				369
370. Number of different circular letters issued.....				370
371. Number of farm or home visits made.....				371
372. Number of office calls received.....				372
373. Number of 4-H Club members enrolled.....	(1) Boys.....			} 373
	(2) Girls.....			
374. Number of 4-H Club members completing.....	(1) Boys.....			} 374
	(2) Girls.....			
375. Number of units in projects conducted by 4-H Club members completing.....		{ rooms articles }	articles	} 375

## HOME MANAGEMENT—Continued

376. Number of kitchens rearranged or improved for convenience according to recommendations.....	376
377. Number of families following recommendations in obtaining labor-saving equipment.....	377
378. Number of families adopting recommended laundering methods.....	378
379. Number of families assisted in home soap making.....	379
380. Number of families adopting recommended methods in care of house.....	380
381. Number of families assisted in making home-made equipment or conveniences.....	381
382. Number of women following a recommended schedule for home activities.....	382
383. Number of 4-H Club members keeping personal accounts.....	383
384. Number of families keeping home accounts according to a recommended plan.....	384
385. Number of families budgeting expenditures in relation to income according to a recommended plan.....	385
386. Number of families assisted in developing home industries as a means of supplementing income.....	386
387. Number of families following recommended methods in buying for the home (other than foods and clothing).....	387
388. Number of families assisted in using timely economic information as a basis for readjusting family living (other than reported under foods and clothing).....	388
389. Number of families assisted in making adjustments in home making to gain a more satisfactory standard of living.....	389

## HOME MANAGEMENT—Continued

390. Number of families having increased time for rest and leisure activities as a result of the home-management program.....	390
391. Total estimated saving due to home-management program..... \$.....	391
392. Number of families following other specific practice recommendations: <sup>1</sup>	
(a) .....	} 392
(b) .....	

## HOUSE FURNISHINGS—Continued

393. Number of families improving the selection of household furnishings.....	393
394. Number of families following recommendations in improving methods of repairing, remodeling, or refinishing furniture.....	394
395. Number of families following recommendations in improving treatment of windows (shades, curtains, draperies).....	395
396. Number of families following recommendations in improving arrangement of rooms (other than kitchens).....	396
397. Number of families improving treatment of walls, woodwork, and floors.....	397
398. Number of families applying principles of color and design in improving appearance of rooms.....	398
399. Total estimated savings due to house-furnishings program..... \$.....	399
400. Number of families following other specific practice recommendations: <sup>1</sup>	
(a) .....	} 400
(b) .....	

## HANDICRAFT—Continued

401. Number of families following recommendations regarding handicraft.....	401
402. Number of families following other specific practice recommendations: <sup>1</sup>	
(a) .....	} 402
(b) .....	

## HOME HEALTH AND SANITATION

Report Only This Year's Extension Activities and Results That Can Be Verified

403. Days devoted to line of work by:	
(a) Home demonstration agents.....	} 403
(b) 4-H Club agents.....	
(c) Agricultural agents.....	
(d) Specialists.....	
404. Number of communities in which work was conducted.....	404
405. Number of voluntary local leaders or committeemen assisting.....	405
406. Days of assistance rendered by voluntary leaders or committeemen.....	406
407. Number of adult result demonstrations conducted.....	407
408. Number of meetings at result demonstrations.....	408
409. Number of method-demonstration meetings held.....	} 409
(a) By agents or specialists.....	
(b) By leaders.....	
410. Number of other meetings held.....	} 410
(a) By agents or specialists.....	
(b) By leaders.....	
411. Number of news stories published.....	411
412. Number of different circular letters issued.....	412
413. Number of farm or home visits made.....	413
414. Number of office calls received.....	414

<sup>1</sup> For the sake of uniformity it is suggested that each State prepare a list of the more important practices to be reported upon by all agents in that State.

## HOME HEALTH AND SANITATION—Continued

415. Number of 4-H Club members enrolled.....	(a) Boys.....	} 415
	(b) Girls.....	
416. Number of 4-H Club members completing.....	(a) Boys.....	} 416
	(b) Girls.....	
417. Number of 4-H Club members not in special health projects who participated in definite health-improvement work.....	(a) Boys.....	} 417
	(b) Girls.....	
418. Number of individuals having health examination on recommendation of extension workers or participating in health contests.....	(a) 4-H Club members.....	} 418
	(b) Others.....	
419. Number of individuals improving health habits according to recommendations.....		419
420. Number of individuals improving posture according to recommendations.....		420
421. Number of individuals adopting recommended positive preventive measures to improve health (immunization for typhoid, diphtheria, smallpox, etc.).....		421
422. Number of families adopting better home-nursing procedure according to recommendations.....		422
423. Number of families installing sanitary closets or outhouses according to recommended plans.....		423
424. Number of homes screened according to recommendations.....		424
425. Number of families following other recommended methods of controlling flies, mosquitoes, and other insects.....		425
426. Number of individuals enjoying improved health as a result of health and sanitation program.....		426
427. Number of families following other specific practice recommendations: <sup>1</sup>		} 427
(a) .....		
(b) .....		

## EXTENSION ORGANIZATION AND COMMUNITY ACTIVITIES

Report Only This Year's Extension Activities and Results That Can Be Verified

ITEM	Extension organization and program making	Community or country-life activities	
	(a)	(b)	
428. Days devoted to line of work by:			} 428
(1) Home demonstration agents.....			
(2) 4-H Club agents.....			
(3) Agricultural agents.....	2		
(4) Specialists.....			
429. Number of communities in which work was conducted.....			429
430. Number of voluntary local leaders or committeemen assisting.....			430
431. Days of assistance rendered by voluntary leaders or committeemen.....			431
432. Number of meetings held.....			432
433. Number of news stories published.....			433
434. Number of different circular letters issued.....			434
435. Number of farm or home visits made.....	30		435
436. Number of office calls received.....	9		436

<sup>1</sup> For the sake of uniformity it is suggested that each State prepare a list of the more important practices to be reported upon by all agents in that State.

## COMMUNITY OR COUNTRY-LIFE ACTIVITIES—Continued

437. Number of communities assisted in making social or country-life surveys, or in scoring themselves or their community organizations.....	437
438. Number of country-life conferences or training meetings conducted for community leaders.....	438
439. Number of community groups assisted with organizational problems, programs of activities, or meeting programs.....	439
440. Number of communities developing recreation according to recommendations.....	440
441. Number of families following recommendations as to home recreation.....	441
442. Number of community or county-wide pageants or plays presented.....	442
443. Number of community houses, clubhouses, permanent camps, or community rest rooms established for.....	443
(a) Adults.....	}
(b) Juniors.....	
444. Number of communities assisted in establishing work centers for canning, seed treatment, meat curing, etc.....	444
445. Number of communities assisted in improving hygienic or public-welfare practices.....	445
446. Number of school or other community grounds improved in accordance with plans furnished.....	446
447. Number of communities assisted in providing library facilities.....	447
448. Number of 4-H Clubs engaging in community activities, such as improving school grounds, conducting local fairs, etc.....	448
449. Number of families aided in obtaining assistance from Red Cross or other relief agency.....	449

## OTHER ACTIVITIES

Report Only This Year's Extensive Activities and Results That Can Be Verified

ITEM	Predatory animals	Rodents	General- feeder insects	Weeds	All other work	
	(a)	(b)	(c)	(d)	(e)	
450. Days devoted to line of work by:						} 450
(1) Home demonstration agents.....						
(2) 4-H Club agents.....						
(3) Agricultural agents.....						
(4) Specialists.....						
451. Number of communities in which work was conducted.....						451
452. Number of voluntary local leaders or committeemen assisting.....						452
453. Days of assistance rendered by voluntary leaders or committeemen.....						453
454. Number of adult result demonstrations conducted.....						454
455. Number of meetings at result demonstrations.....						455
456. Number of method-demonstration meetings held.....						456
457. Number of other meetings held.....						457
458. Number of news stories published.....						458
459. Number of different circular letters issued.....						459
460. Number of farm or home visits made.....						460
461. Number of office calls received.....						461
462. Number of farmers following recommendations.....						462
463. Pounds of poison used.....						463
464. Total estimated saving due to control program.....	\$	\$	\$	\$	\$	464

## MISCELLANEOUS 4-H CLUBS (Indicate by name)

ITEM		(a)	(b)	(c)	(d)	(e)	
		<i>slowing</i>					
465. Number of 4-H Club members enrolled.....	{ (1) Boys.....						} 465
	{ (2) Girls.....	6					
466. Number of 4-H Club members completing.....	{ (1) Boys.....						} 466
	{ (2) Girls.....	6					

\* Include grasshoppers, army worms, chinch bugs, and other insects not reported under specific crop or livestock headings.