

SHARE:



Join Our Email List



April 14, 2020

GLOBAL CHANGE CENTER

AT VIRGINIA TECH



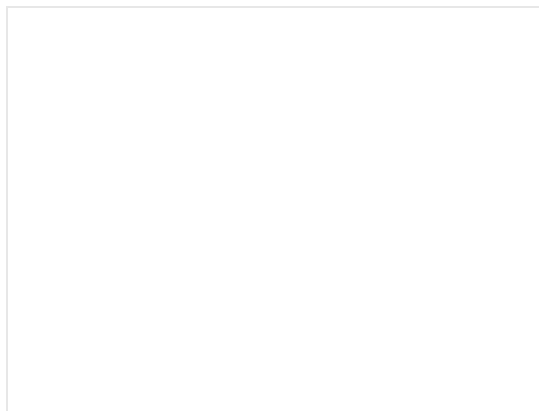
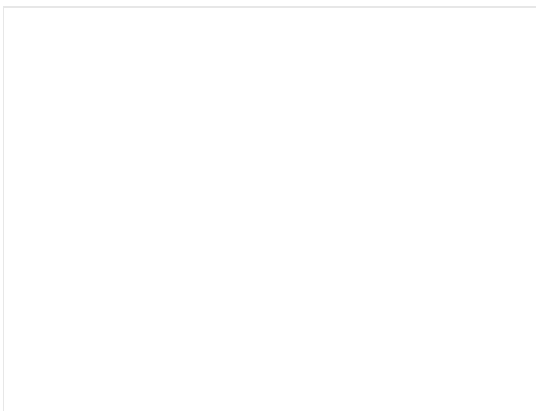
ANNOUNCEMENTS



Reminder: IGC Fellowship applications due tomorrow

Visit [our website](#) for application details. Send applications by email to Jess Zielske at jcoker@vt.edu

FACULTY & FELLOW SPOTLIGHT





Dr. Scott Salom - Entomology

Dr. Salom's research program at Virginia Tech focuses on forest entomology and biological control. In relation to global change, Dr. Salom works with non-native invasive insect and weed pests of forest ecosystems. He studies the biological systems...

[Read more](#)

www.globalchange.vt.edu



Devin Hoffman - Geosciences

Devin is interested in the macroevolutionary and diversity responses of vertebrates to rapid environmental changes, particularly those surrounding mass extinctions. To do this he studies the Triassic Period (242-201 million years ago) when many...

[Read more](#)

www.globalchange.vt.edu

COMMUNITY



These local businesses provide food & drinks for delivery/curbside pickup. Check them out!

Each week, we'll try to highlight different establishments!

- [Our Daily Bread](#) - bakery and bistro, offerings for all three meals plus desserts, pasteries, breads. Menu online, call 540-953-2815 to order.
- [Lefty's](#) - check their facebook page for updated menus, including sandwiches, salads, burgers, and craft beer/wine. Call 540-552-7000 to order.
- [Thai This](#) - food truck will be parked this weekend (Thur-Sat) at [Moon Hollow Brewing](#)!
- [Gillies](#) - thanks to enormous community support, Gillies has recently reopened! Mostly vegetarian cuisine, now also offering frozen soups.
- [Idego Coffee](#) - Roastery is still open. Free bean deliveries for all of Montgomery County or within a 15 minute drive of the shop in downtown Blacksburg.

Local needs: current ways to volunteer and donate

- Quality local news is crucial during this unusual time. This fundraiser set up by [Virginia is for](#)

[Journalists](#) is collecting money to help VA journalists covering local news who have been furloughed. Donate if you can!

- Check out the local [Mail a Hug](#) facebook group that is coordinating distributions of cards for isolated elderly residents during this time of social distancing. Especially after a holiday without family, any cards/artwork/letters are greatly appreciated.
- The North Main YMCA is providing meals for youth 7 days a week. If you'd like to make a financial donation for this program, click [here](#).
- The [Blacksburg Interfaith Food Pantry](#) is having trouble getting their grocery orders filled. They are in need of canned goods: beans, fruits, pasta meals, vegetables, meat/fish, and also peanut butter. Call 540-951-8134 or email bburgifp@gmail.com to coordinate a donation. You can also purchase a coffee donation for them through [Strange Coffee Company](#).
- If you're able, consider ongoing donations to the [SWVA Virtual Tip Jar](#) which distributes money to local service industry workers who have lost wages during this period. They've already dispersed over \$7000!



From President Sands: Consider the VA Medical Reserve Corps

In true Hokie fashion, members of our community are using their unique talents and skills to make a difference and help others. Governor Ralph Northam is calling for an additional 30,000 medical and nonmedical volunteers to support the surge in...

[Read more](#)
vtnews.vt.edu

NEWSWORTHY

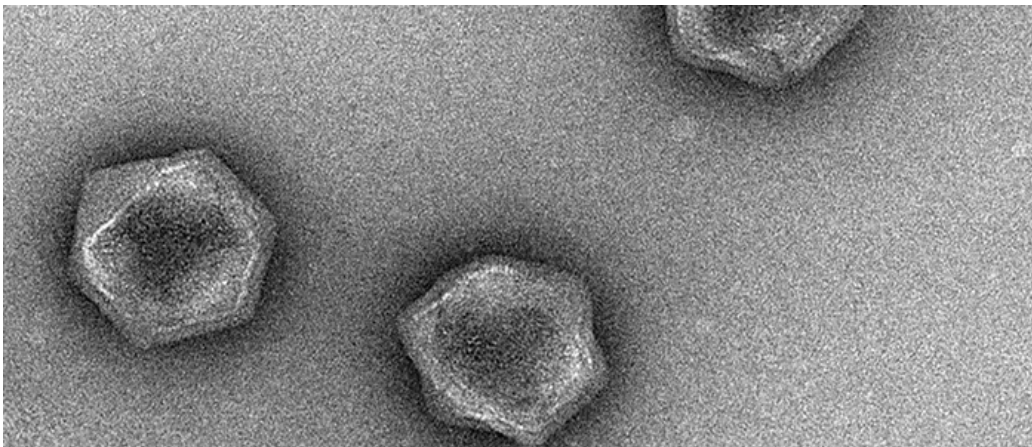


Connect with the natural world by observing the birds...

GCC affiliate Dana Hawley reminds us that "recent studies suggest that connecting with nature may directly improve our mental and physical health. Activities like birdwatching, which can be done from a window or porch, may be one of the easiest..."

[Read more](#)

www.globalchange.vt.edu



Viruses don't have a metabolism, but some have the...

In a new study published in Nature Communications, a research team including GCC affiliate Frank Aylward reported that they had found a substantial collection of genes for metabolic cycles - a defining characteristic of cellular life - in a wide...

[Read more](#)

www.globalchange.vt.edu

**Do you have an opportunity or announcement you'd like to share with the
GCC community? [Send us an email!](#)**

Global Change Center | Virginia Tech | 540-231-5400 | www.globalchange.vt.edu

CONNECT WITH THE GCC:

