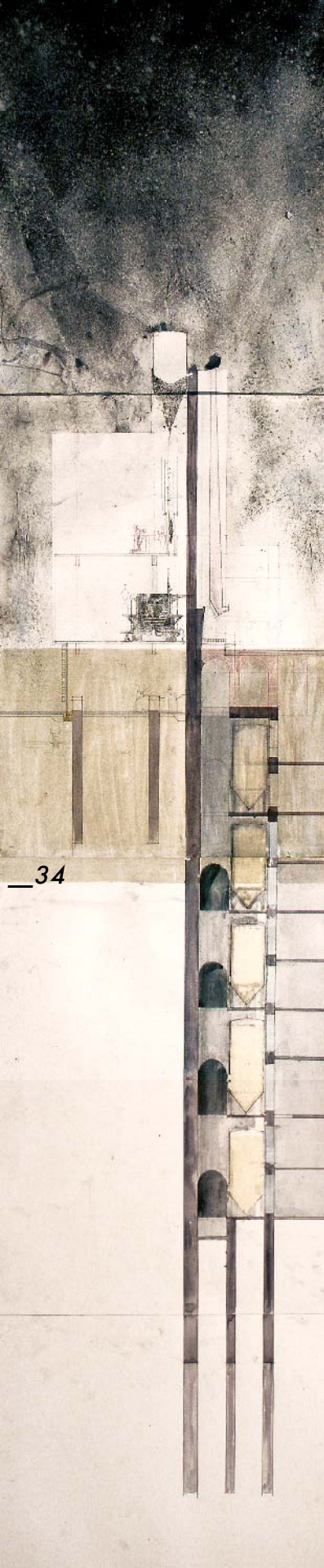


Notes 19 March 2003

Axonometric Section Study

The Wintergarden is a transitory space between indoor & outdoor.  
 A variety of thresholds slowly transition the guest from in to out and back in again.  
 A hops trellis held down from lift with cabeling forms an outdoor porch-like space.  
 The roof of the conditioned portion is partially water and partially glass.  
 The vines to creep over top and transform the interior of the space.  
 The continuous glass line is broken to further blur the interior from the exterior by enhancing the light reflections off of it.  
 Water from the reflecting pool helps collect rainwater & feed the vines. Excess water drains down into the building through the restrooms, across a wall of glass providing visual privacy for the user from the exterior.

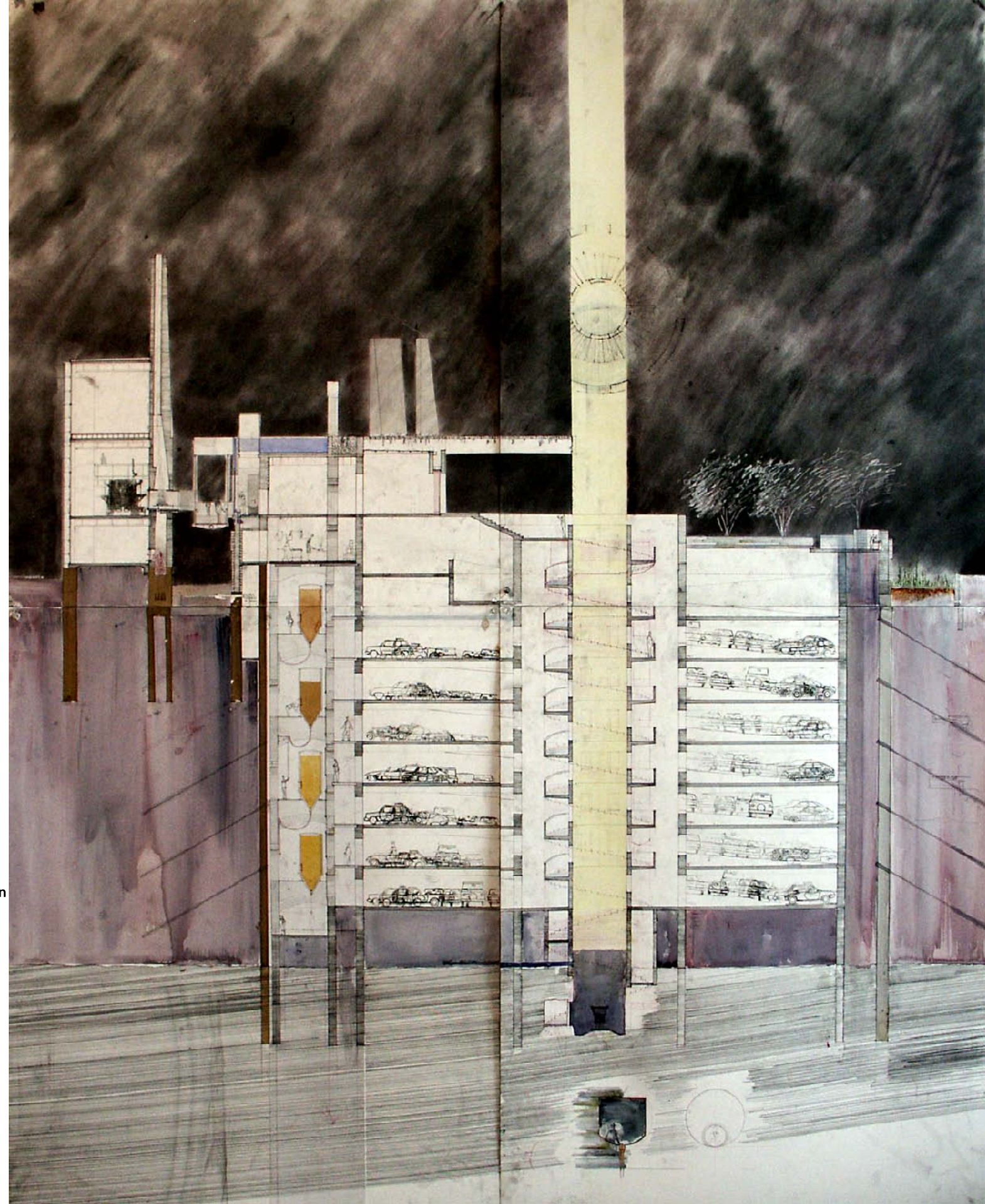




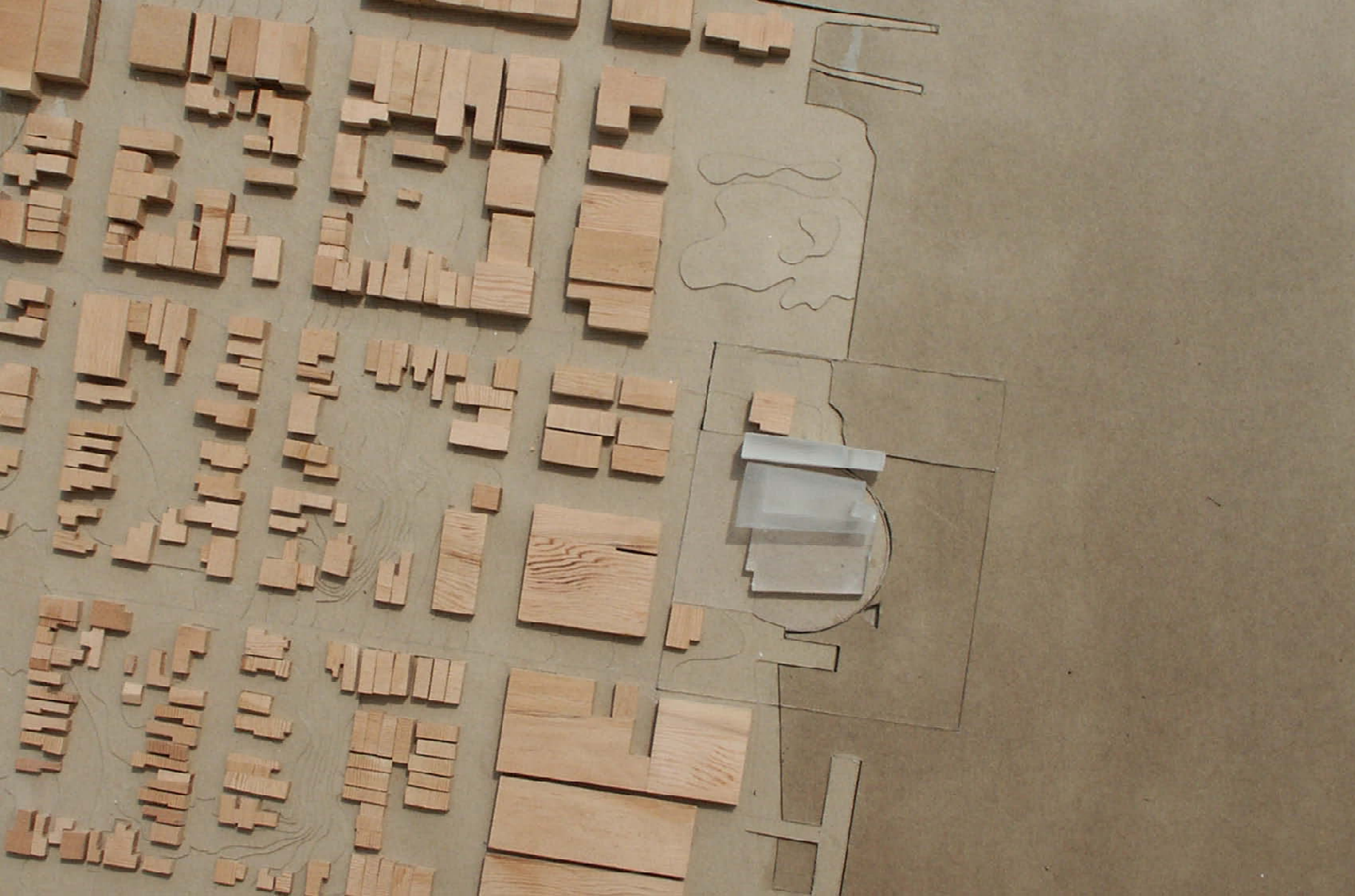
34

Brewery Building Section Study

North-South Building Section



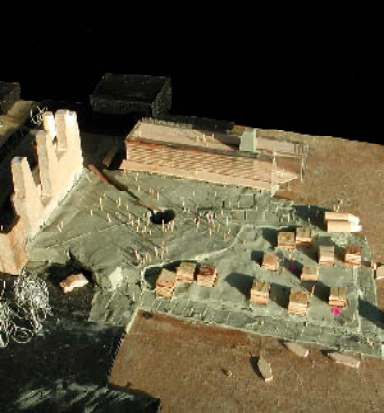




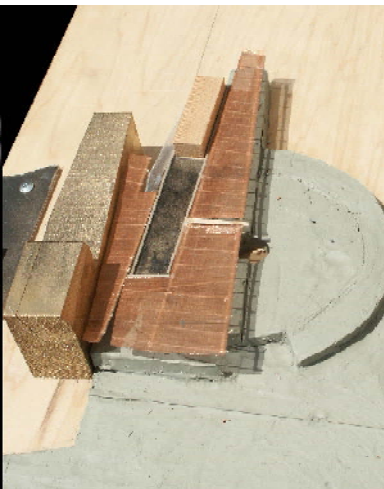
Final Site Model







Study Model, January 2003



Study Model, March 2003

\_36



Final Building Model

