

Make Hit Phlegm

James Dankovich

Thesis submitted to the faculty of the Virginia Polytechnic Institute and State University  
in partial fulfillment of the requirements for the degree of

Master of Architecture

Susan C. Piedmont-Palladino (Chair)

Paul F. Emmons

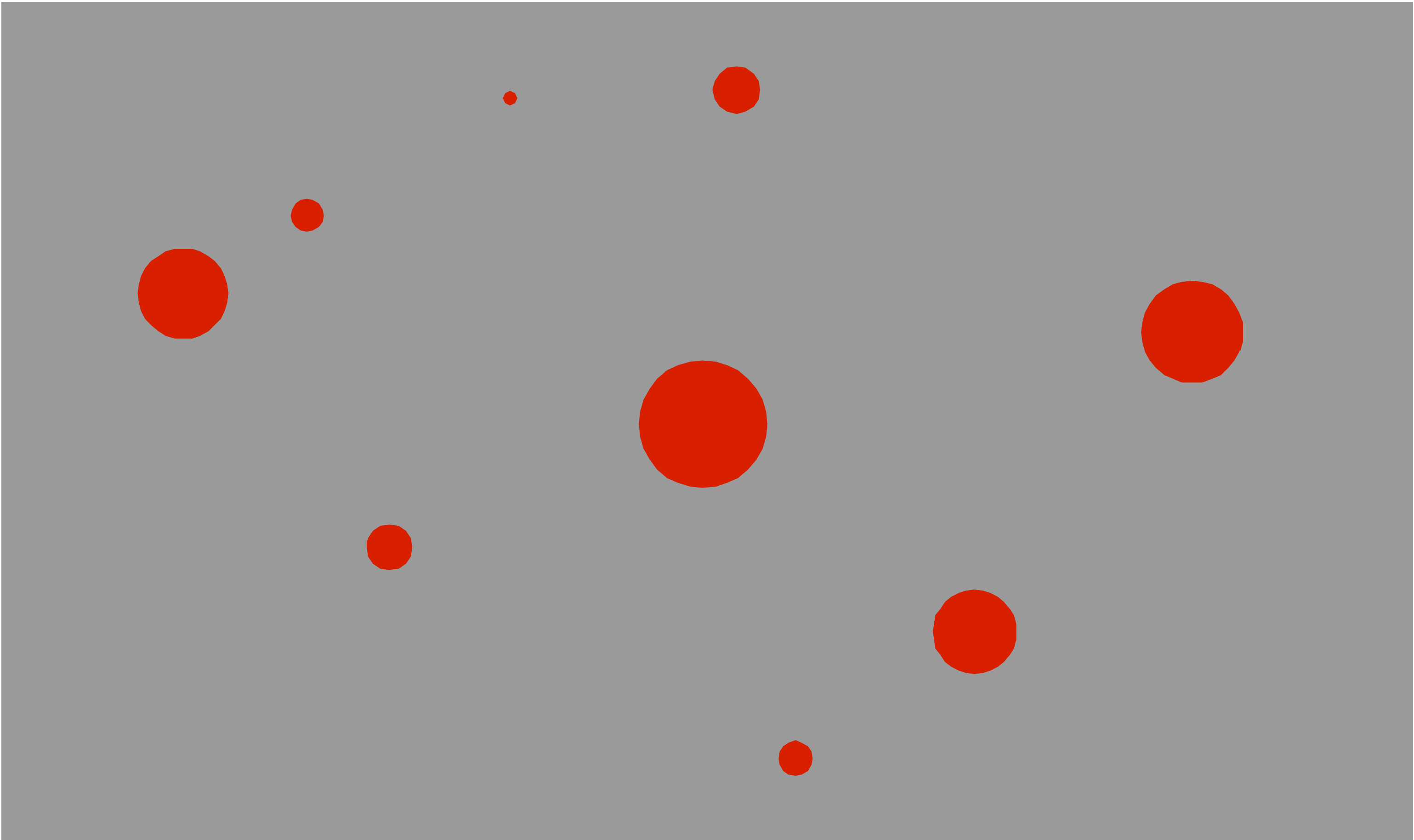
Marcia Feuerstein

9/30/09

Alexandria, VA

Keywords: Architecture,  
Surrealism, Chance

Copyright James Dankovich

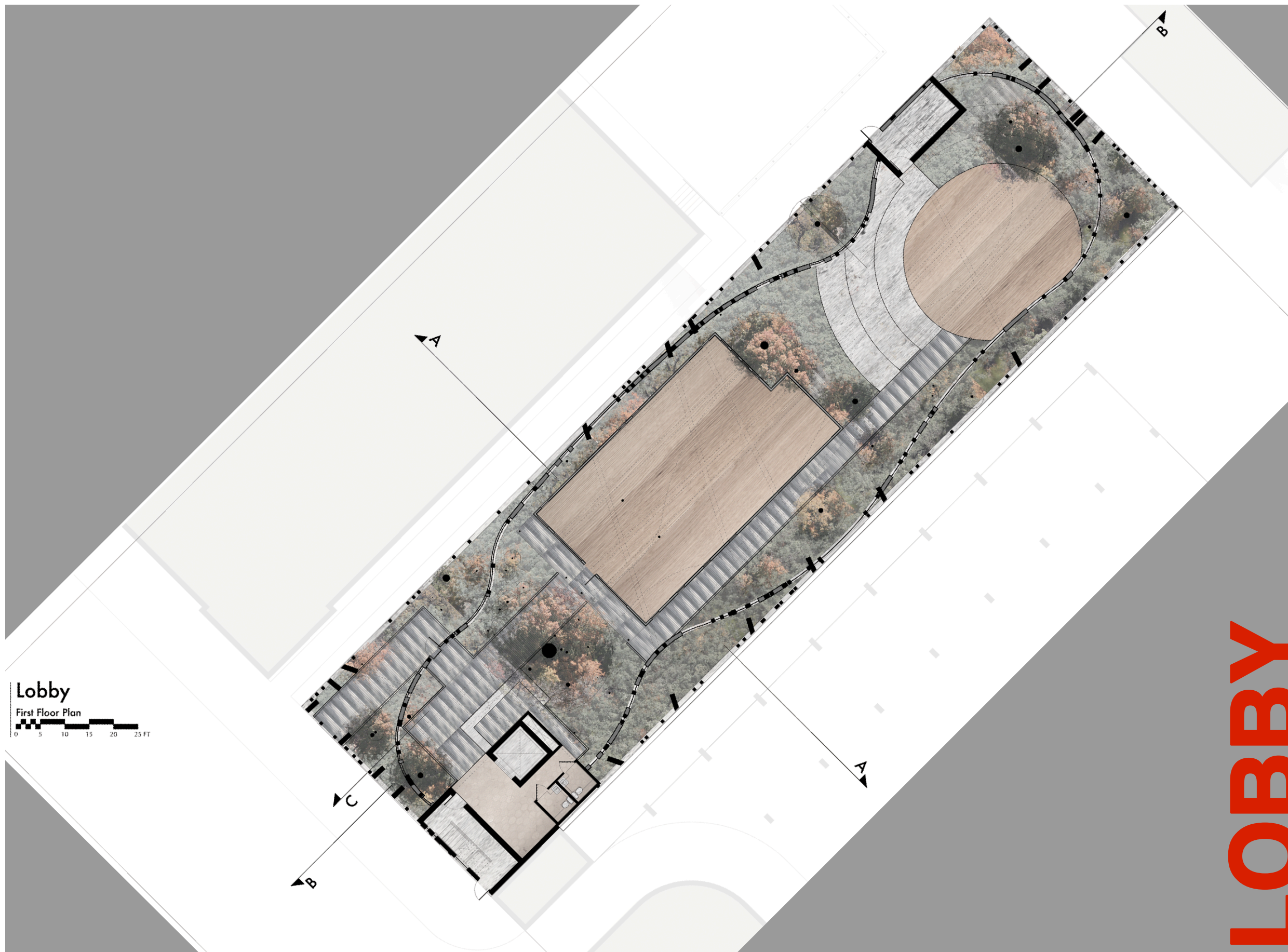




## Surreality:

"I believe in the future resolution of these two states, dream and reality, which are seemingly so contradictory, into a kind of absolute reality, a *surreality*." - Andre Breton (Manifesto of Surrealism, 1924)

This section is the resolution of the earlier studies. The surreal design is the result that straddles the line and mediates the controlled deliberate acts of waking life with the chance results of dream life.



## First Floor

Using the WikiProgram, this building was designed to house an art school. The first floor of the school is used for a lobby space and transition to the project. The outographed house is reused for a 2D art gallery and the rear space is an amphitheater. The yellow loop cast during the standard stoppage study is the exterior wall of the building.

The rainforest lobby dream serves as the theme for the first floor spaces.

# LOBBY



UNO Cards by Mattel Inc. © 2010.  
Used with permission Fig. 7

**Gallery**  
Second Floor Plan  
0 5 10 15 20 25 FT

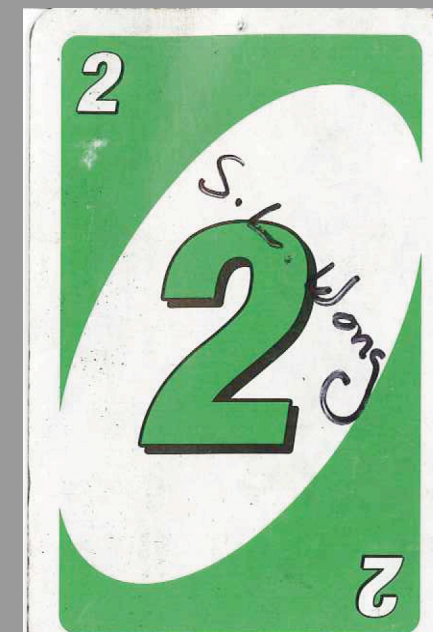


## Second Floor

The second floor is a continuation of the gallery spaces for 3D art. The red loop is used for the perimeter of the second floor plate.

These translation spaces are a connection between the surreal world of the building with the 'normal' world and a connection of the school and its students products to the outside worlds as well.

**GALLERY**



UNO Cards by Mattel Inc. © 2010.  
Used with permission Fig. 7

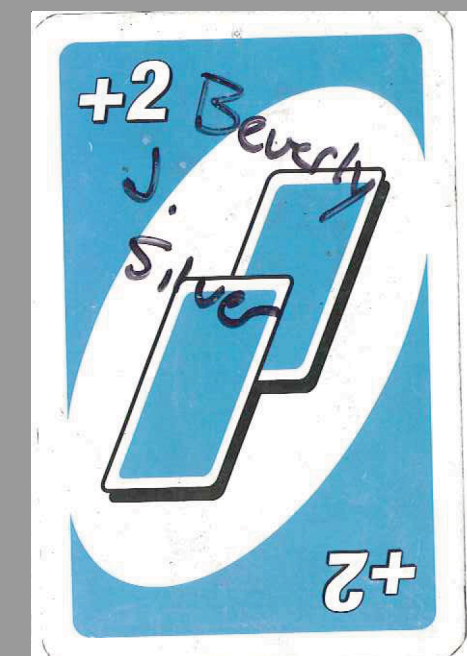


## Third Floor

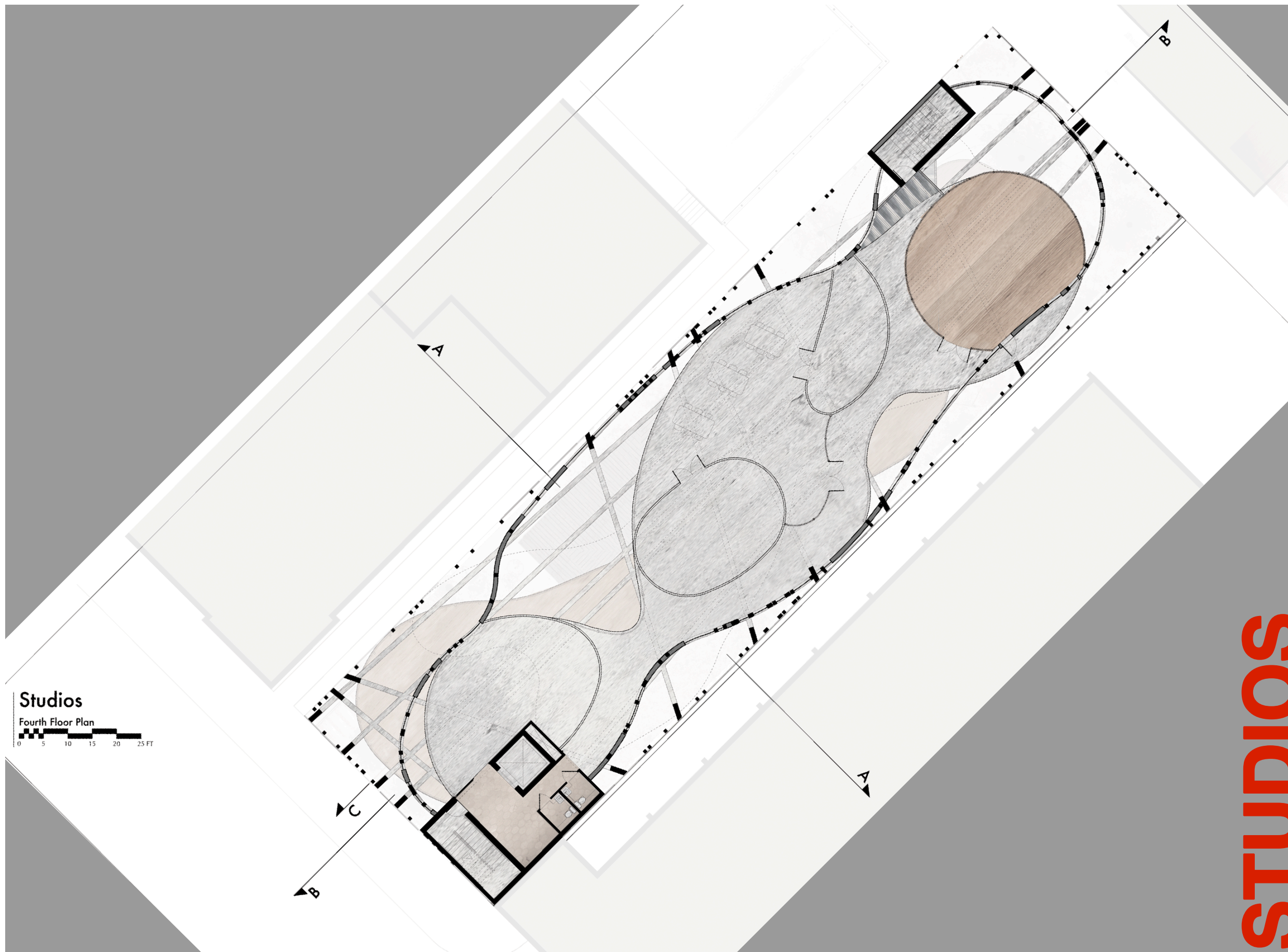
The library space and group meeting spaces are on the third floor. The bubble off the main core is used as the librarian's office. There is a large balcony on this floor above the front entry.

The core spaces are based on the earlier Graphic Standards study, using a rational component for a utilitarian need.

# LIBRARY



UNO Cards by Mattel Inc. © 2010.  
Used with permission Fig. 7



**Studios**  
Fourth Floor Plan  
0 5 10 15 20 25 FT

## Fourth Floor

This floor contains the school's studio spaces. The lower studio is the 2D art studio, the middle is for 3D art, and the top is for dance.

The spaces throughout the building have varying levels of enclosure, such as the 3D studio, where there is an enclosed shop and paint room with a work room open to the atrium.

# STUDIOS



UNO Cards by Mattel Inc. © 2010.  
Used with permission Fig. 7

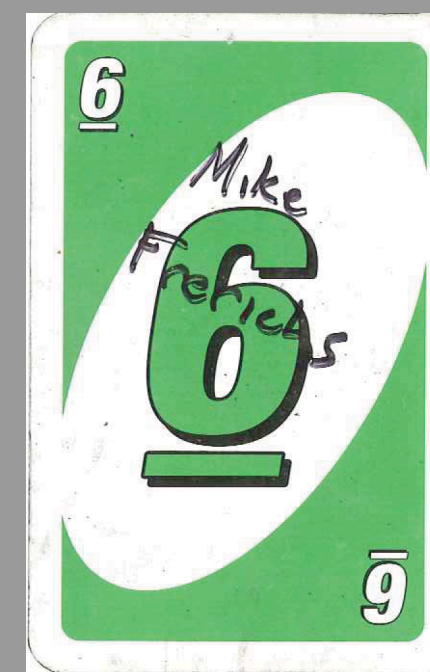


## Fifth Floor

The school's administrative offices are on the fifth floor. There is a break room with a balcony, open office spaces, a glass enclosed conference room, a reception area with spaces to display art, and enclosed offices at the rear.

Most of the enclosures are glass systems, except where partitions are needed for privacy. The majority of spaces only have a handrail separating them from the atrium

## ADMINISTRATION



UNO Cards by Mattel Inc. © 2010.

Used with permission

Fig. 7



## Sixth Floor

The school has two classrooms, a lecture hall and a large group meeting room on this floor of the building.

The group meeting room shares a wall with the conference room on the floor below, forming a two story object within the larger atrium that passes through the building.

## CLASSROOMS

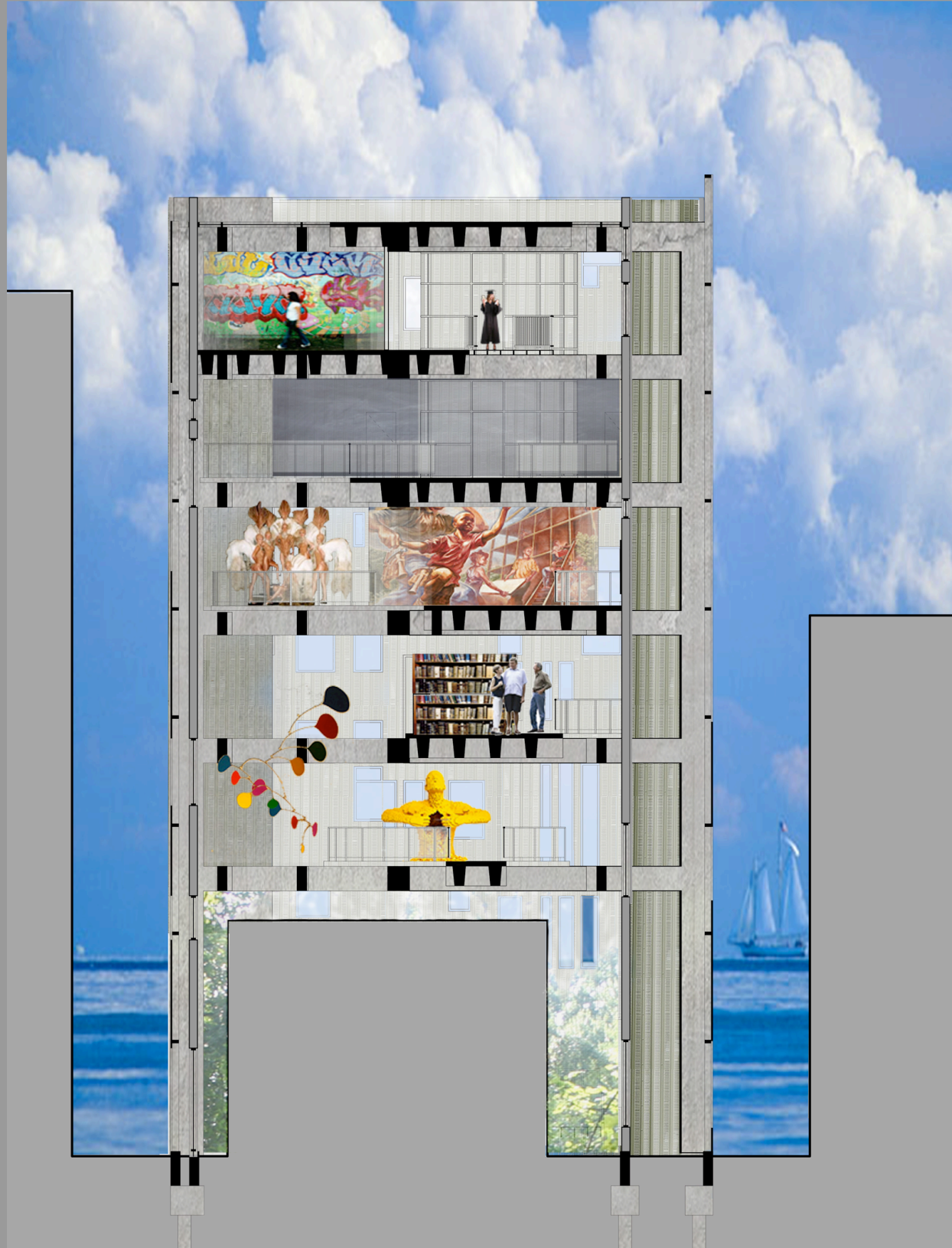


UNO Cards by Mattel Inc. © 2010.  
Used with permission Fig. 7



## The Roof

The final stoppage is the for the roof. The spaces within the last stoppage is a green roof, sometimes cantilevering over the exterior wall. The space between the stoppage and the exterior wall is a glass roof enclosure with the building's screens wrapping up over the roof.



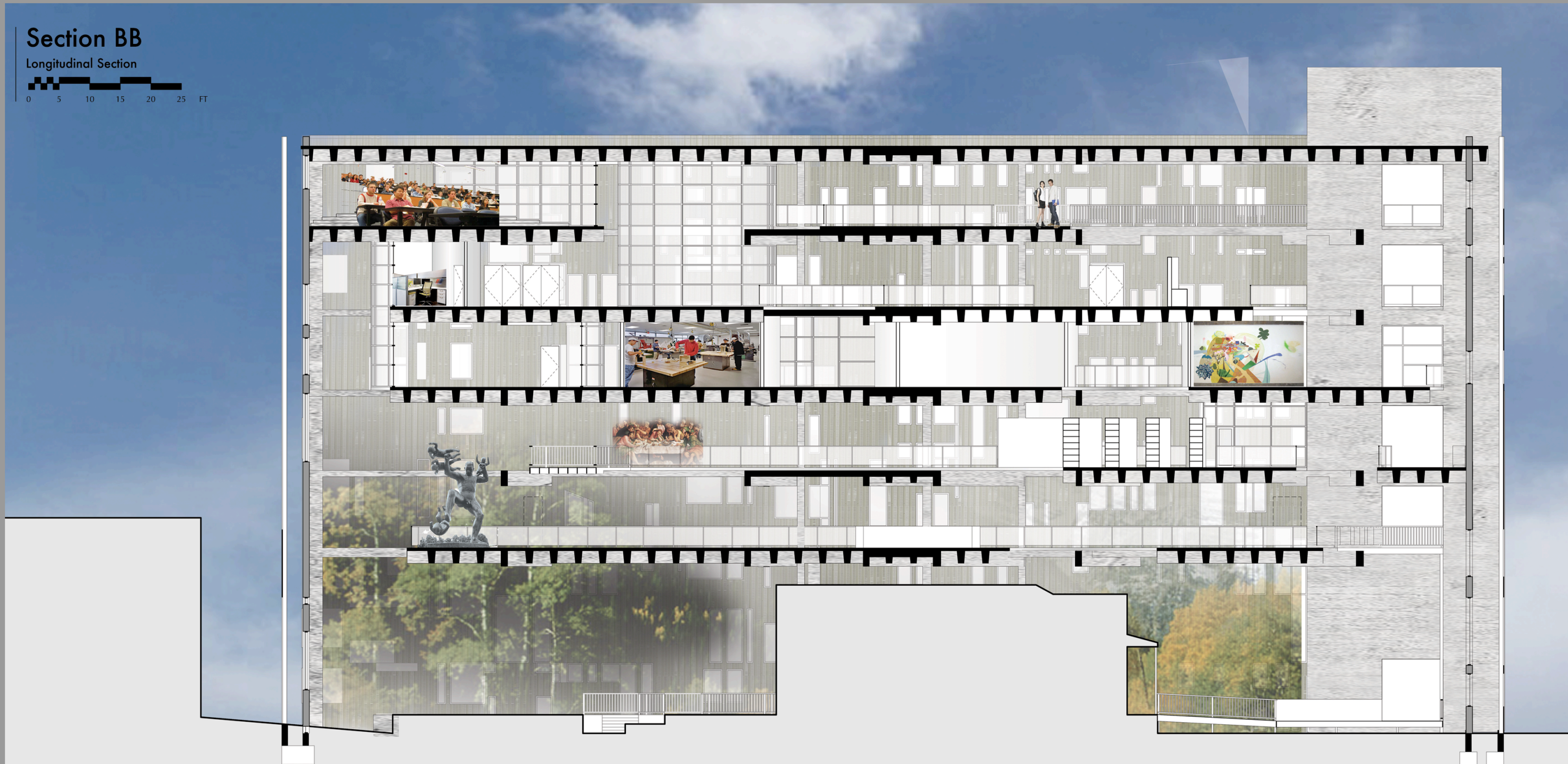
*Rainforset Dream Section*



*Atruim Dream Section*

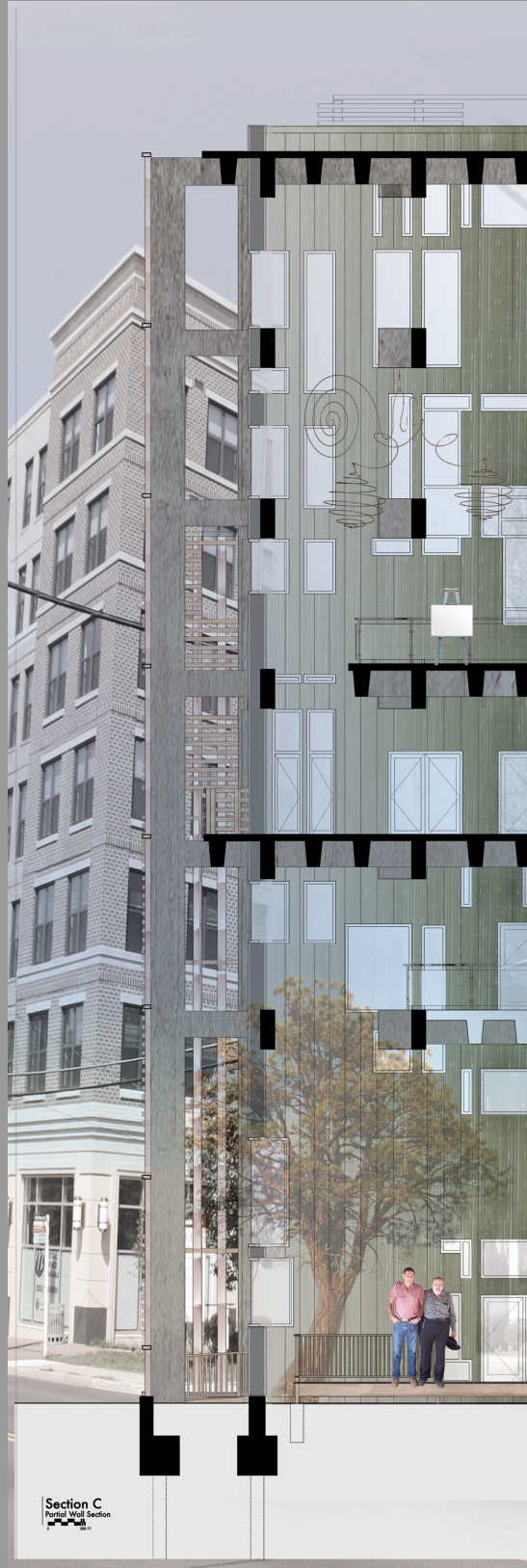
## The Cross Section

The sections are partly inspired by the development of the Dream Collages. Ideas about atriums and indoor forests were replicated in the project base on these collages. There are atriums throughout the building, in part due to the Standard Stoppages. The first floor incorporates a Rainforest into the lobby's spaces with the planting plan determined by the results of the scattergram.



## The Transverse Section

The sections, as with the Dream Collages and Plans, are illuminated using a surreal method of my own invention. The images used in these drawings were selected by searching for keywords with Google Image Search and the first resulting image would then be used for the collage.



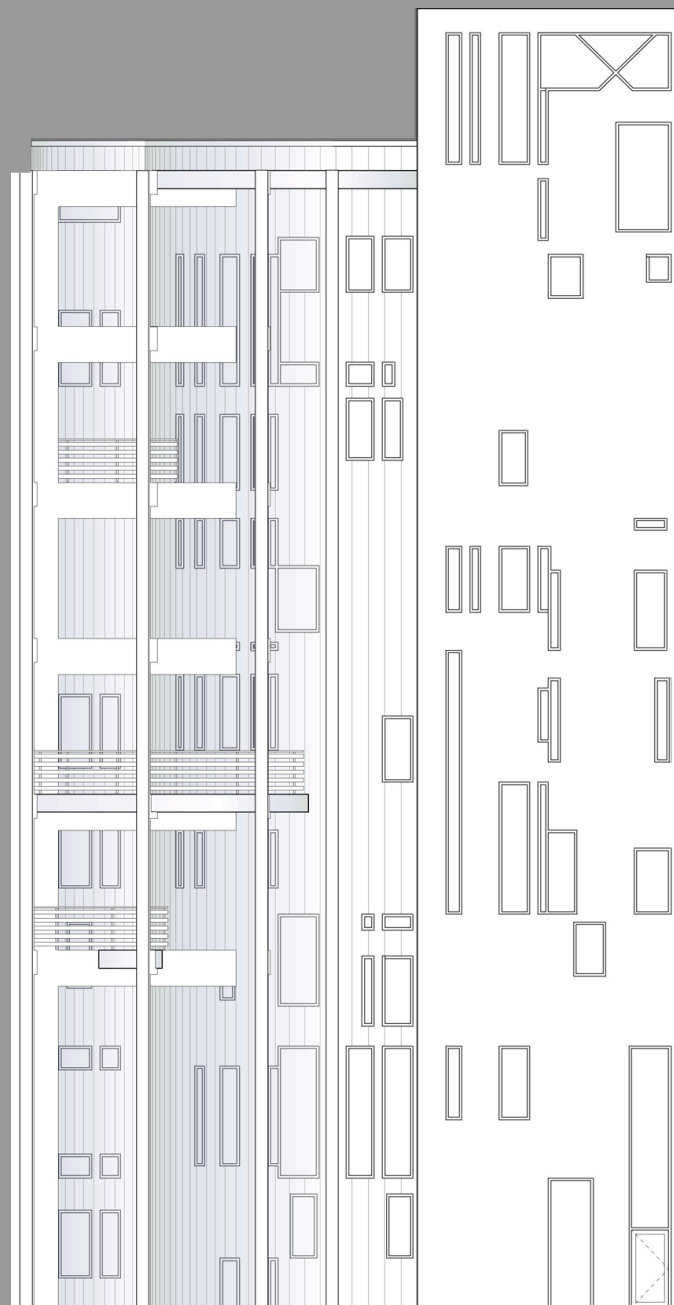
## The Wall Section

This large scale section is about 60" when printed. This was to illustrate the atrium space which is a result of the Standard Stoppage base floor plans. There are pockets of atrium space throughout the building and the shape changes from floor to floor.

This section shows portions of the exterior columns, that vary from being inside or out based on the undulating exterior wall. It also shows the deep beams that span long distances to support the unusual floor plates.



*Detail of Wall Section*



*Front Final Elevation*



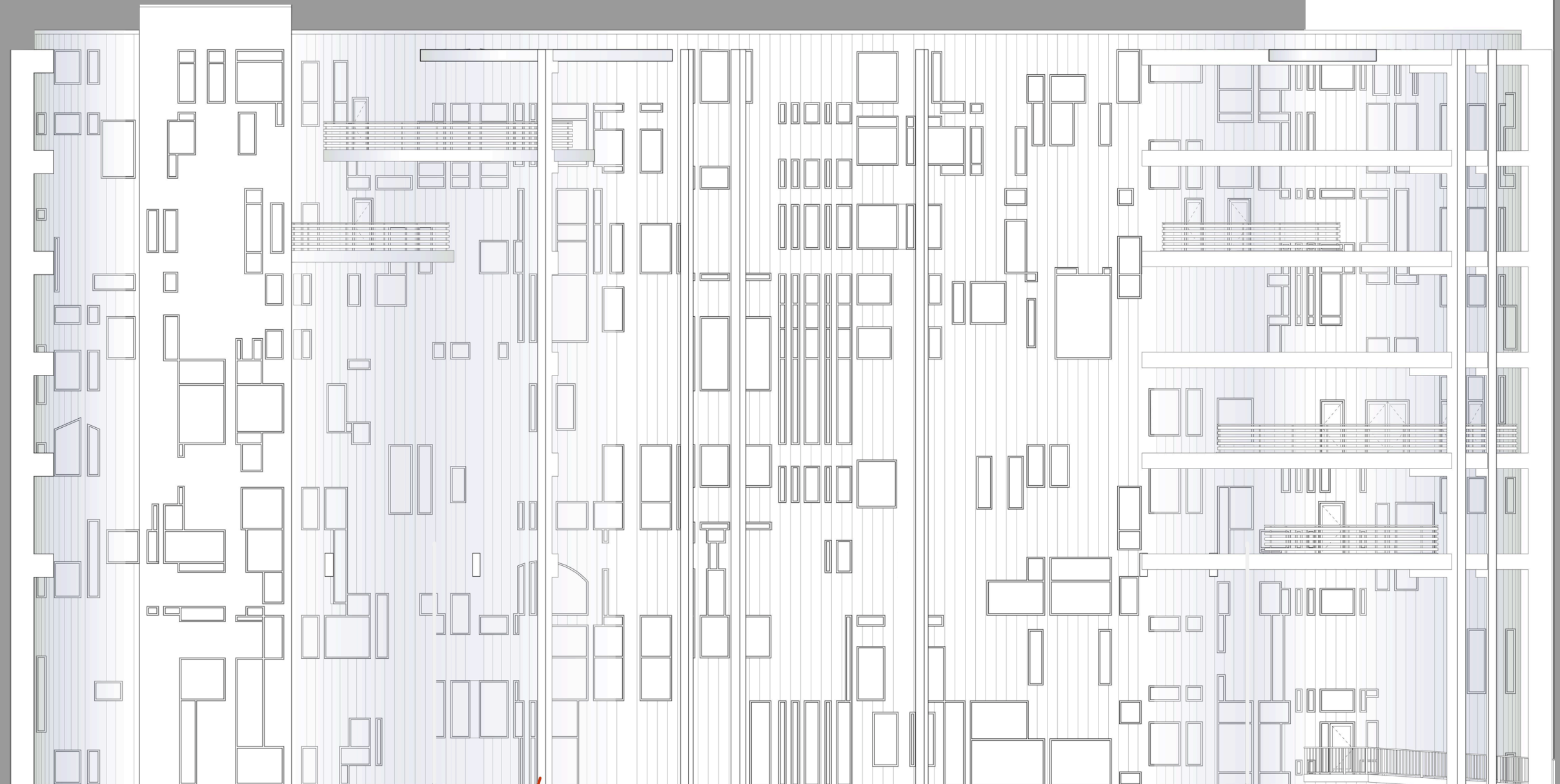
*Front Final Elevation with Screen*

## Elevations

The final elevations depict all the elements shown in the earliest sketches. The vertical elements appear as both window mullions and the structure of the building. The larger verticals were connected to the verticals on the opposite elevation to form the concrete post and beam structure that supports the building.

## Final Elevations

This elevation shows where the building's structure and floor plates extend outside of the building envelope. Where the plates are outside the envelope they are used as balconies with a railing similar to the screen wall at the property line.



*North Side Final Elevation*