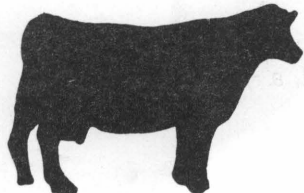


LD
5655
A762
no. 294
C.2

dairy guidelines

EXTENSION DIVISION VIRGINIA POLYTECHNIC INSTITUTE AND STATE UNIVERSITY BLACKSBURG, VIRGINIA

V.P.I. & S.U. LIBRARY



TUBE FEEDING WEAK CALVES

JUL 24 1979

By

BLACKSBURG, VIRGINIA
February, 1979

Series 294



Dr. D. A. Hartman, Extension Specialist, 4-H Dairy Youth, VPI & SU
Dr. T. L. Bibb, Associate Professor of Veterinary Science, VPI & SU
Dr. W. R. Murley, Project Leader & Extension Specialist-Nutrition, VPI & SU

Scours or diarrhea causes rapid dehydration in baby calves and is often the cause of death. Because of weakness due to diarrhea, they often refuse to drink milk and thus become dehydrated. Force feeding with an electrolyte solution by inserting a tube down the esophagus can be effective in restoring these lost body fluids and minerals. An electrolyte solution provides energy and salts for cell metabolism which are so important for calves suffering from dehydration. It is also an effective method of treating for scours or diarrhea as the source of energy, usually provided by the corn syrup, is easy to digest.

A tube feeding apparatus can be purchased at most feed and livestock supply stores. A prepared electrolyte solution may be purchased for convenience or it may be mixed with ingredients from the kitchen. Use warm water (warm to the touch on your wrist) when mixing the solutions.

Stand the calf, hold it between your knees and insert tube about 12 to 14 inches. It will pass easily down the esophagus and will stop when it reaches the stomach. Do not apply a heavy force at any time. Then merely hold the bag containing the solution above the calf's head and release the hose clamp so the liquid may drain into the calf's stomach.

Tube feed a sick calf with 2 pounds of electrolyte solution four times per day for two days. On the third day, replace one of the feedings with milk. On

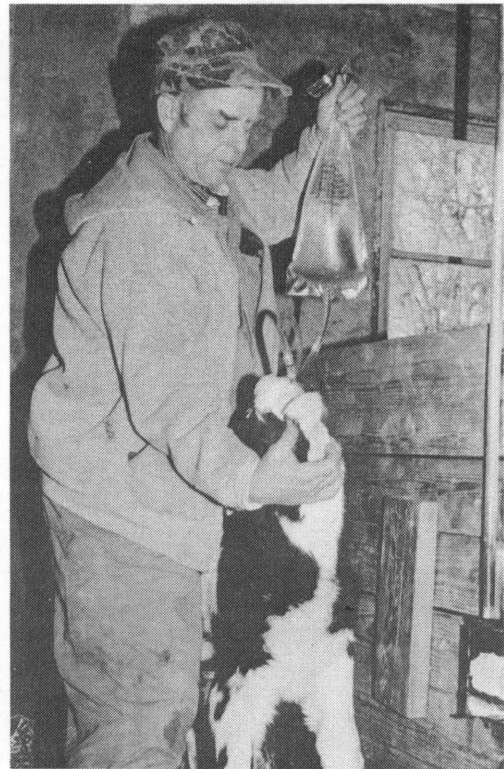
the fourth day, replace two of the feedings, continuing to add a replacement each day until the calf is back entirely on milk.

Return to whole milk on the fourth day.

Electrolyte Solution

You may chose any of the three mixtures:

1. 1 can beef consomme
2 teaspoons baking soda
1 pack Sure Jell
2 teaspoons Lite salt
make up to 2 quarts with water
2. 1 egg
2 teaspoons baking soda
1 pack Sure Jell
2 teaspoons Lite salt
make up to 2 quarts with water
3. 2 cans beef consomme
3 cans water
1 teaspoon baking soda



The Virginia Cooperative Extension Service by law and purpose is dedicated to serve all people on an equal and nondiscriminatory basis.

An Equal Opportunity/Affirmative Action Employer

Issued in furtherance of Cooperative Extension work, Acts of May 8 and June 30, 1914, and September 30, 1977, in cooperation with the U. S. Department of Agriculture. W. R. Van Dresser, Dean, Extension Division, Cooperative Extension Service, Virginia Polytechnic Institute and State University, Blacksburg, Virginia 24061; M. C. Harding, Sr., Administrator, 1890 Extension Program, Virginia State College, Petersburg, Virginia 23803.